

Form 3160-5
(June 2019)

UNITED STATES
DEPARTMENT OF THE INTERIOR
BUREAU OF LAND MANAGEMENT

FORM APPROVED
OMB No. 1004-0137
Expires: October 31, 2021

SUNDRY NOTICES AND REPORTS ON WELLS
Do not use this form for proposals to drill or to re-enter an abandoned well. Use Form 3160-3 (APD) for such proposals.

5. Lease Serial No. **N0G13111801**

6. If Indian, Allottee or Tribe Name
EASTERN NAVAJO

SUBMIT IN TRIPLICATE - Other instructions on page 2

1. Type of Well

Oil Well Gas Well Other

2. Name of Operator **ENDURING RESOURCES LLC**

7. If Unit of CA/Agreement, Name and/or No.
NMNM135218A/NMNM135218A, NMNM135218X

8. Well Name and No. **W ESCAVADA UNIT/307H**

3a. Address **200 ENERGY COURT, FARMINGTON, NM 87401** 3b. Phone No. (include area code)
(505) 497-8574

9. API Well No. **3004321325**

10. Field and Pool or Exploratory Area
CHACO/BASIN MANCOS

4. Location of Well (Footage, Sec., T.,R.,M., or Survey Description)
SEC 19/T22N/R07W/NMP

11. Country or Parish, State
SANDOVAL/NM

12. CHECK THE APPROPRIATE BOX(ES) TO INDICATE NATURE OF NOTICE, REPORT OR OTHER DATA

TYPE OF SUBMISSION	TYPE OF ACTION				
<input type="checkbox"/> Notice of Intent	<input type="checkbox"/> Acidize	<input type="checkbox"/> Deepen	<input type="checkbox"/> Production (Start/Resume)	<input type="checkbox"/> Water Shut-Off	
<input checked="" type="checkbox"/> Subsequent Report	<input type="checkbox"/> Alter Casing	<input type="checkbox"/> Hydraulic Fracturing	<input type="checkbox"/> Reclamation	<input type="checkbox"/> Well Integrity	
<input type="checkbox"/> Final Abandonment Notice	<input type="checkbox"/> Casing Repair	<input type="checkbox"/> New Construction	<input type="checkbox"/> Recomplete	<input checked="" type="checkbox"/> Other	
	<input type="checkbox"/> Change Plans	<input type="checkbox"/> Plug and Abandon	<input type="checkbox"/> Temporarily Abandon		
	<input type="checkbox"/> Convert to Injection	<input type="checkbox"/> Plug Back	<input type="checkbox"/> Water Disposal		

13. Describe Proposed or Completed Operation: Clearly state all pertinent details, including estimated starting date of any proposed work and approximate duration thereof. If the proposal is to deepen directionally or recomplete horizontally, give subsurface locations and measured and true vertical depths of all pertinent markers and zones. Attach the Bond under which the work will be performed or provide the Bond No. on file with BLM/BIA. Required subsequent reports must be filed within 30 days following completion of the involved operations. If the operation results in a multiple completion or recompletion in a new interval, a Form 3160-4 must be filed once testing has been completed. Final Abandonment Notices must be filed only after all requirements, including reclamation, have been completed and the operator has determined that the site is ready for final inspection.)

Enduring Resources performed a workover for a HIT and gas lift repair. An updated well schematic is attached.

EOT: 5,324 MD

Packer Top: NA

GLVs: NA

Orifice Valve: none

Job Start: 12/14/2023

Job End: 12/14/2023

14. I hereby certify that the foregoing is true and correct. Name (Printed/Typed)
HEATHER HUNTINGTON / Ph: (505) 636-9751

Title **Permitting Technician**

Signature (Electronic Submission)

Date **01/15/2024**

THE SPACE FOR FEDERAL OR STATE OFFICE USE

Approved by

MATTHEW H KADE / Ph: (505) 564-7736 / Accepted

Title **Petroleum Engineer**

Date **01/16/2024**

Conditions of approval, if any, are attached. Approval of this notice does not warrant or certify that the applicant holds legal or equitable title to those rights in the subject lease which would entitle the applicant to conduct operations thereon.

Office **FARMINGTON**

Title 18 U.S.C Section 1001 and Title 43 U.S.C Section 1212, make it a crime for any person knowingly and willfully to make to any department or agency of the United States any false, fictitious or fraudulent statements or representations as to any matter within its jurisdiction.

(Instructions on page 2)

Additional Information

Location of Well

0. SHL: NENW / 497 FNL / 2171 FWL / TWSP: 22N / RANGE: 07W / SECTION: 19 / LAT: 36.131067 / LONG: -107.617389 (TVD: 4720 feet, MD: 15644 feet)

PPP: SESW / 1310 FSL / 2630 FWL / TWSP: 22N / RANGE: 07W / SECTION: 18 / LAT: 36.133319 / LONG: -107.613569 (TVD: 4720 feet, MD: 15644 feet)

PPP: SWSE / 650 FSL / 1330 FWL / TWSP: 22N / RANGE: 08W / SECTION: 12 / LAT: 36.133319 / LONG: -107.613569 (TVD: 4720 feet, MD: 15644 feet)

PPP: SWSE / 330 FSL / 1971 FEL / TWSP: 22N / RANGE: 07W / SECTION: 18 / LAT: 36.133319 / LONG: -107.613569 (TVD: 4720 feet, MD: 15644 feet)

PPP: SENE / 1315 FSL / 50 FWL / TWSP: 22N / RANGE: 08W / SECTION: 13 / LAT: 36.133319 / LONG: -107.613569 (TVD: 4720 feet, MD: 15644 feet)

PPP: SENE / 1315 FSL / 50 FWL / TWSP: 22N / RANGE: 08W / SECTION: 13 / LAT: 36.133319 / LONG: -107.613569 (TVD: 4720 feet, MD: 15644 feet)

BHL: NESW / 2295 FSL / 1359 FWL / TWSP: 22N / RANGE: 08W / SECTION: 12 / LAT: 36.133319 / LONG: -107.613569 (TVD: 4720 feet, MD: 15644 feet)

CONFIDENTIAL

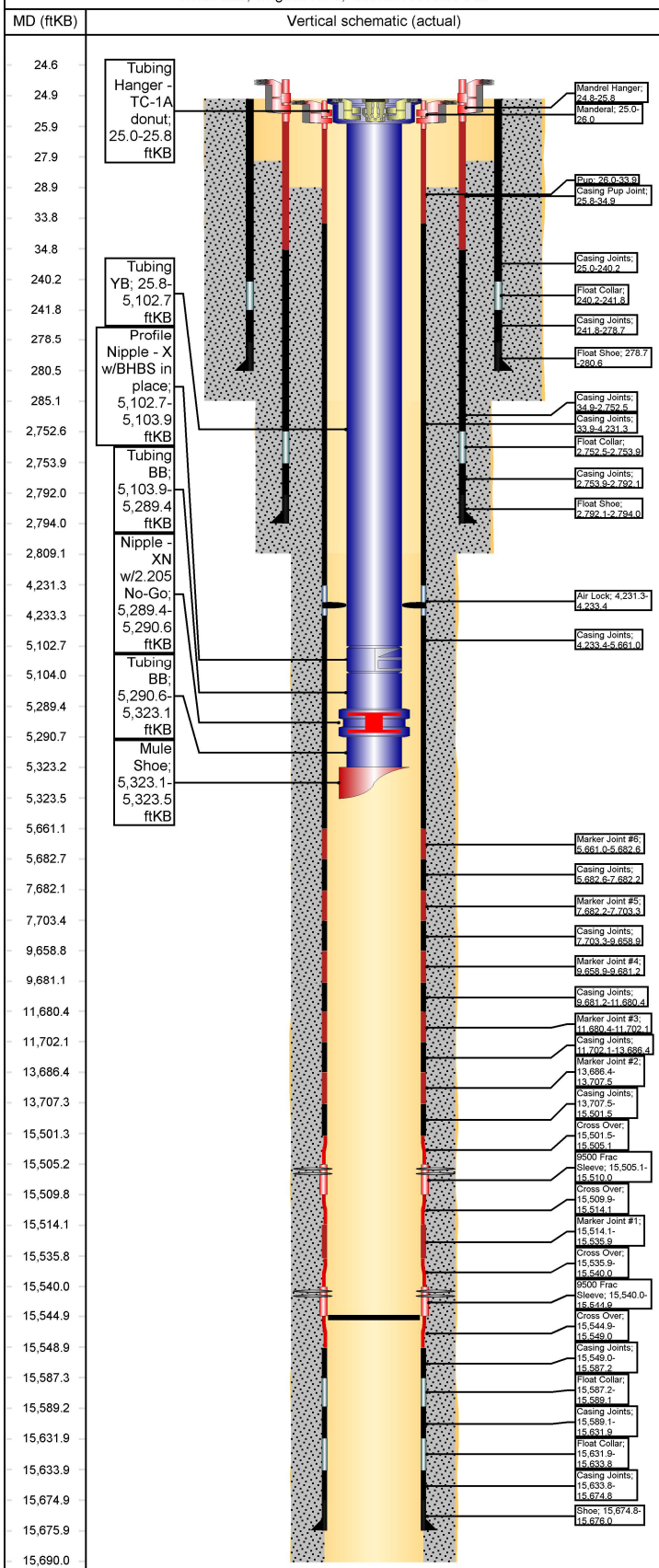


Wellbore Schematic - Components and Cement

Well Name: **W ESCAVADA UNIT 307H**

API/UWI 30-043-21325	County Sandoval	State/Province New Mexico	Surface Legal Location (Unit C) SW/4, SE/4, Section 19, Twp 22N, Rng 07W, NMPM
Spud Date 4/29/2019	On Production Date 8/23/2019	Abandon Date	Ground Elevation (ft) 6,824.00
			Original KB Elevation (ft) 6,849.00
			Total Depth (All) (ftKB) Original Hole - 15,690.0
			PBTD (All) (ftKB) Original Hole - 15,545.0

Horizontal, Original Hole, 1/3/2024 2:56:57 PM



Other Strings			
String Description	String Length (ft)	Set Depth (ftKB)	Run Date

Other In Hole				
Des	String	Top (ftKB)	Btm (ftKB)	Run Date

Rod Strings			
<des> on <dtmrun>			
Rod Description	String Length (ft)	Set Depth (ftKB)	Run Date

Jts	Item Des	OD (in)	Len (ft)	Top (ftKB)	Btm (ftKB)

Tubing Strings

Tubing - Production set at 5,323.5ftKB on 12/14/2023 19:00

Tubing Description	Len (ft)	Set Depth (ftKB)	Run Date	Cut/Pull Date	Depth C...
Tubing - Production	5,298.51	5,323.5	12/14/2023		

Jts	Item Des	OD (in)	Len (ft)	Top (ftKB)	Btm (ftKB)	Grade	Wt (lb/ft)
1	Tubing Hanger -TC-1A donut	4 7/8	0.80	25.0	25.8		
16	Tubing YB	2 7/8	5,076.9	25.8	5,102.7	L-80	6.50
5			2				
1	Profile Nipple - X w/BHBS in place	2 7/8	1.20	5,102.7	5,103.9	L-80	6.50
6	Tubing BB	2 7/8	185.52	5,103.9	5,289.4	L-80	6.50
1	Nipple - XN w/2.205 No-Go	3.668	1.20	5,289.4	5,290.6	L-80	6.50
1	Tubing BB	2 7/8	32.47	5,290.6	5,323.1	L-80	6.50
1	Mule Shoe	3.67	0.40	5,323.1	5,323.5	L-80	6.50

Casing Strings

Production, 15,676.0ftKB

Casing Description	OD (in)	Wt/Len (lb/ft)	String Grade	Top (ftKB)	Set Depth...	Depth C...	ID (in)
Production	5 1/2	17.00	P-110	25.0	15,676.0		4.89

Casing Components

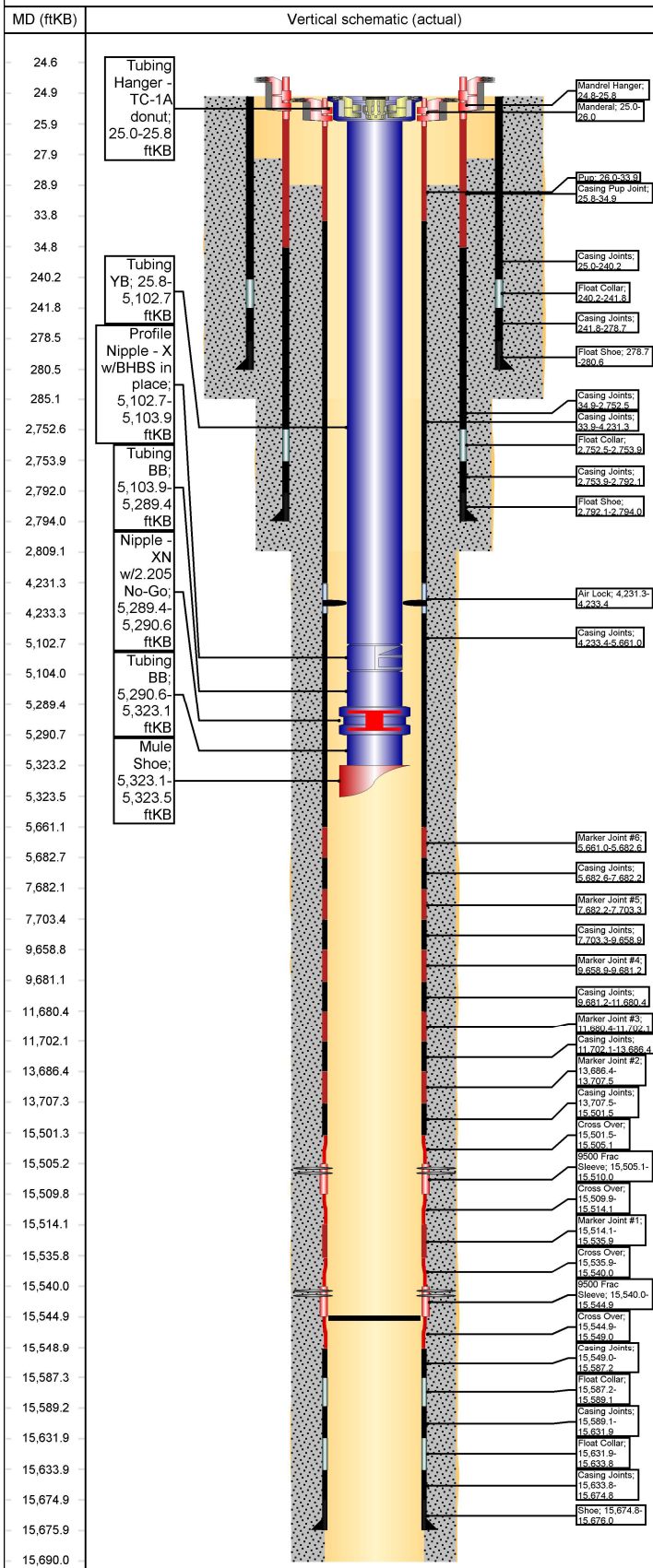
Item Des	Jts	OD (in)	ID (in)	Wt (lb/ft)	Grade	Len (ft)
Landing Joint	0	5 1/2	4.89	17.00		0.00
Mandrel	1	5 1/2	4.89	17.00		1.00
Pup	1	5 1/2	4.89	17.00	P-110	7.90
Casing Joints	103	5 1/2	4.89	17.00	P-110	4,197.42
Air Lock	1	5 1/2	4.89	17.00	P-110	2.07
Casing Joints	35	5 1/2	4.89	17.00	P-110	1,427.58
Marker Joint #6	1	5 1/2	4.89	17.00	P-110	21.60
Casing Joints	50	5 1/2	4.89	17.00	P-110	1,999.59
Marker Joint #5	1	5 1/2	4.89	17.00	P-110	21.10
Casing Joints	48	5 1/2	4.89	17.00	P-110	1,955.66
Marker Joint #4	1	5 1/2	4.89	17.00	P-110	22.26
Casing Joints	49	5 1/2	4.89	17.00	P-110	1,999.19
Marker Joint #3	1	5 1/2	4.89	17.00	P-110	21.69
Casing Joints	49	5 1/2	4.89	17.00	P-110	1,984.36
Marker Joint #2	1	5 1/2	4.89	17.00	P-110	21.03
Casing Joints	44	5 1/2	4.89	17.00	P-110	1,793.98
Cross Over	1	5 1/2	4.89	17.00	P-110	3.65
9500 Frac Sleeve	1	5 3/4	4.89	17.00	P-110	4.85
Cross Over	1	5 1/2	4.89	17.00	P-110	4.11
Marker Joint #1	1	5 1/2	4.89	17.00	P-110	21.86
Cross Over	1	5 1/2	4.89	17.00	P-110	4.12
9500 Frac Sleeve	1	5 3/4	4.89	17.00	P-110	4.85
Cross Over	1	5 1/2	4.89	17.00	P-110	4.08
Casing Joints	1	5 1/2	4.89	17.00	P-110	38.25
Float Collar	1	5 1/2	4.89	17.00	P-110	1.92
Casing Joints	1	5 1/2	4.89	17.00	P-110	42.73
Float Collar	1	5 1/2	4.89	17.00	P-110	1.92

WellView®

Wellbore Schematic - Components and Cement

Well Name: W ESCAVADA UNIT 307H

Horizontal, Original Hole, 1/3/2024 2:56:59 PM



Casing Components							
Item Des	Jts	OD (in)	ID (in)	Wt (lb/ft)	Grade	Len (ft)	
Casing Joints	1	5 1/2	4.89	17.00	P-110	41.01	
Shoe	1	5 1/2	4.89	17.00	P-110	1.20	

Intermediate Casing, 2,794.0ftKB							
Casing Description	OD (in)	Wt/Len (lb/ft)	String Grade	Top (ftKB)	Set Depth...	Depth C...	ID (in)
Intermediate Casing	9 5/8	36.00	J-55	24.8	2,794.0		8.92

Casing Components							
Item Des	Jts	OD (in)	ID (in)	Wt (lb/ft)	Grade	Len (ft)	
Landing Joint	0	9 5/8	8.92	36.00	J-55	0.00	
Mandrel Hanger	1	9 5/8	8.92	36.00	J-55	1.00	
Casing Pup Joint	1	9 5/8	8.92	36.00	J-55	9.10	
Casing Joints	63	9 5/8	8.92	36.00	J-55	2,717.64	
Float Collar	1	9 5/8	8.92	36.00	J-55	1.40	
Casing Joints	1	9 5/8	8.92	36.00	J-55	38.20	
Float Shoe	1	9 5/8	8.92	36.00	J-55	1.90	

Surface Casing, 280.6ftKB							
Casing Description	OD (in)	Wt/Len (lb/ft)	String Grade	Top (ftKB)	Set Depth...	Depth C...	ID (in)
Surface Casing	13 3/8	54.50	J-55	25.0	280.6		12.62

Casing Components							
Item Des	Jts	OD (in)	ID (in)	Wt (lb/ft)	Grade	Len (ft)	
Casing Joints	5	13 3/8	12.62	54.50	J-55	215.25	
Float Collar		13 3/8	12.62			1.55	
Casing Joints	1	13 3/8	12.62	54.50	J-55	36.90	
Float Shoe		13 3/8	12.62			1.90	

Cement			
Surface Cement, Casing, 4/29/2019 17:30			
Description	String	Cementing Start Date	Cementing End Date
Surface Cement	Surface Casing, 280.6ftKB	4/29/2019 17:30	4/29/2019 18:45

Cement Stages			
Stg #	Top (ftKB)	Btm (ftKB)	Com
1	25.0	280.6	315 sx (66.2 bbl) Type G Cement

Intermediate Cement, Casing, 6/2/2019 04:00			
Description	String	Cementing Start Date	Cementing End Date
Intermediate Cement	Intermediate Casing, 2,794.0ftKB	6/2/2019 04:00	6/2/2019 07:00

Cement Stages			
Stg #	Top (ftKB)	Btm (ftKB)	Com
1	28.0	2,794.0	Lead: 595 sx (201.3 bbl) Type G Tail: 180 sx (36.9 bbl) Type G

Production Casing Cement, Casing, 6/15/2019 11:30			
Description	String	Cementing Start Date	Cementing End Date
Production Casing Cement	Production, 15,676.0ftKB	6/15/2019 11:30	6/15/2019 16:30

Cement Stages			
Stg #	Top (ftKB)	Btm (ftKB)	Com
1	29.0	15,690.0	199 bbls (585sx) Lead cement at 12.4 ppg, 526 bbls (2175 sx) of Tail cement at 13.3 ppg.

Wellbores	
Original Hole	
Wellbore Name	Parent Wellbore
Original Hole	Original Hole

Wellbore Sections			
Section Des	Size (in)	Act Top (ftKB)	Act Btm (ftKB)
Surface Hole	17 1/2	25.0	285.0
Intermediate Hole	12 1/4	285.0	2,809.0
Production Hole	8 1/2	2,809.0	15,690.0

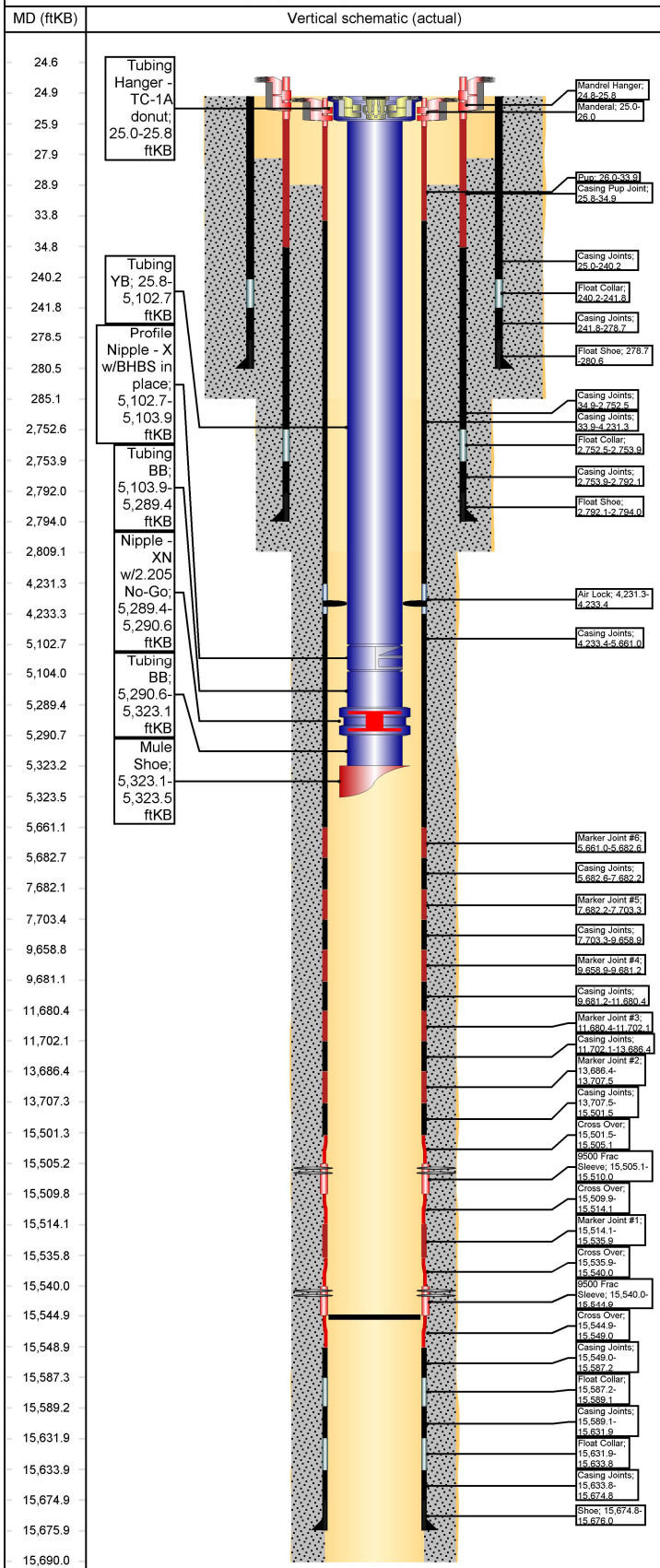
WellView

Wellbore Schematic - Components and Cement

Well Name: **W ESCAVADA UNIT 307H**

API/UWI 30-043-21325	County Sandoval	State/Province New Mexico	Surface Legal Location (Unit C) SW/4, SE/4, Section 19, Twp 22N, Rng 07W, NMPM
Spud Date 4/29/2019	On Production Date 8/23/2019	Abandon Date	Ground Elevation (ft) 6,824.00
			Original KB Elevation (ft) 6,849.00
			Total Depth (All) (ftKB) Original Hole - 15,690.0
			PBTD (All) (ftKB) Original Hole - 15,545.0

Horizontal, Original Hole, 1/3/2024 2:56:57 PM



Other Strings			
String Description	String Length (ft)	Set Depth (ftKB)	Run Date

Other In Hole				
Des	String	Top (ftKB)	Btm (ftKB)	Run Date

Rod Strings			
<des> on <dtmrun>			
Rod Description	String Length (ft)	Set Depth (ftKB)	Run Date

Jts	Item Des	OD (in)	Len (ft)	Top (ftKB)	Btm (ftKB)

Tubing Strings					
Tubing - Production set at 5,323.5ftKB on 12/14/2023 19:00					
Tubing Description	Len (ft)	Set Depth (ftKB)	Run Date	Cut/Pull Date	Depth C...
Tubing - Production	5,298.51	5,323.5	12/14/2023		

Jts	Item Des	OD (in)	Len (ft)	Top (ftKB)	Btm (ftKB)	Grade	Wt (lb/ft)
1	Tubing Hanger -TC-1A donut	4 7/8	0.80	25.0	25.8		
16	Tubing YB	2 7/8	5,076.9	25.8	5,102.7	L-80	6.50
5			2				
1	Profile Nipple - X w/BHBS in place	2 7/8	1.20	5,102.7	5,103.9	L-80	6.50
6	Tubing BB	2 7/8	185.52	5,103.9	5,289.4	L-80	6.50
1	Nipple - XN w/2.205 No-Go	3.668	1.20	5,289.4	5,290.6	L-80	6.50
1	Tubing BB	2 7/8	32.47	5,290.6	5,323.1	L-80	6.50
1	Mule Shoe	3.67	0.40	5,323.1	5,323.5	L-80	6.50

Casing Strings							
Production, 15,676.0ftKB							
Casing Description	OD (in)	Wt/Len (lb/ft)	String Grade	Top (ftKB)	Set Depth...	Depth C...	ID (in)
Production	5 1/2	17.00	P-110	25.0	15,676.0		4.89

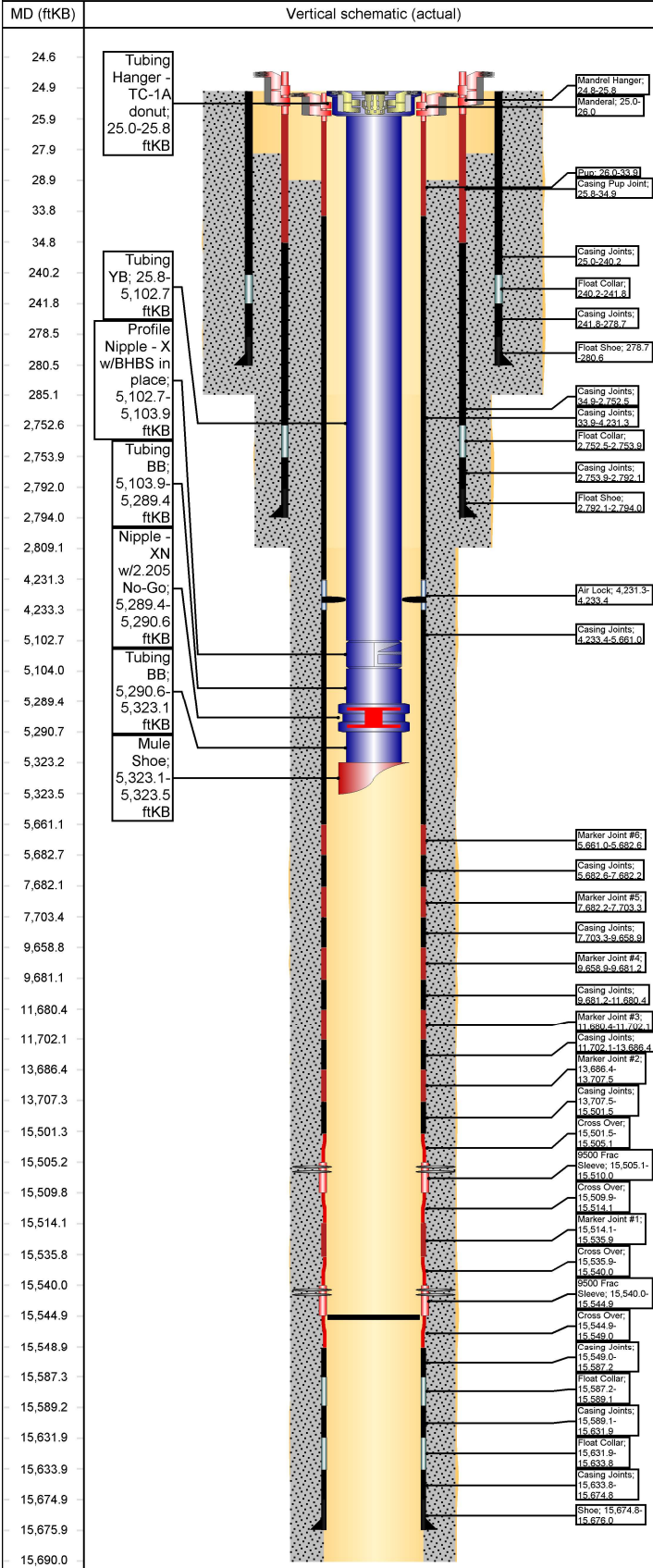
Casing Components							
Item Des	Jts	OD (in)	ID (in)	Wt (lb/ft)	Grade	Len (ft)	
Landing Joint	0	5 1/2	4.89	17.00		0.00	
Mandrel	1	5 1/2	4.89	17.00		1.00	
Pup	1	5 1/2	4.89	17.00	P-110	7.90	
Casing Joints	103	5 1/2	4.89	17.00	P-110	4,197.42	
Air Lock	1	5 1/2	4.89	17.00	P-110	2.07	
Casing Joints	35	5 1/2	4.89	17.00	P-110	1,427.58	
Marker Joint #6	1	5 1/2	4.89	17.00	P-110	21.60	
Casing Joints	50	5 1/2	4.89	17.00	P-110	1,999.59	
Marker Joint #5	1	5 1/2	4.89	17.00	P-110	21.10	
Casing Joints	48	5 1/2	4.89	17.00	P-110	1,955.66	
Marker Joint #4	1	5 1/2	4.89	17.00	P-110	22.26	
Casing Joints	49	5 1/2	4.89	17.00	P-110	1,999.19	
Marker Joint #3	1	5 1/2	4.89	17.00	P-110	21.69	
Casing Joints	49	5 1/2	4.89	17.00	P-110	1,984.36	
Marker Joint #2	1	5 1/2	4.89	17.00	P-110	21.03	
Casing Joints	44	5 1/2	4.89	17.00	P-110	1,793.98	
Cross Over	1	5 1/2	4.89	17.00	P-110	3.65	
9500 Frac Sleeve	1	5 3/4	4.89	17.00	P-110	4.85	
Cross Over	1	5 1/2	4.89	17.00	P-110	4.11	
Marker Joint #1	1	5 1/2	4.89	17.00	P-110	21.86	
Cross Over	1	5 1/2	4.89	17.00	P-110	4.12	
9500 Frac Sleeve	1	5 3/4	4.89	17.00	P-110	4.85	
Cross Over	1	5 1/2	4.89	17.00	P-110	4.08	
Casing Joints	1	5 1/2	4.89	17.00	P-110	38.25	
Float Collar	1	5 1/2	4.89	17.00	P-110	1.92	
Casing Joints	1	5 1/2	4.89	17.00	P-110	42.73	
Float Collar	1	5 1/2	4.89	17.00	P-110	1.92	



Wellbore Schematic - Components and Cement

Well Name: W ESCAVADA UNIT 307H

Horizontal, Original Hole, 1/3/2024 2:56:59 PM



Casing Components

Item Des	Jts	OD (in)	ID (in)	Wt (lb/ft)	Grade	Len (ft)
Casing Joints	1	5 1/2	4.89	17.00	P-110	41.01
Shoe	1	5 1/2	4.89	17.00	P-110	1.20

Intermediate Casing, 2,794.0ftKB

Casing Description	OD (in)	Wt/Len (lb/ft)	String Grade	Top (ftKB)	Set Depth...	Depth C...	ID (in)
Intermediate Casing	9 5/8	36.00	J-55	24.8	2,794.0		8.92

Casing Components

Item Des	Jts	OD (in)	ID (in)	Wt (lb/ft)	Grade	Len (ft)
Landing Joint	0	9 5/8	8.92	36.00	J-55	0.00
Mandrel Hanger	1	9 5/8	8.92	36.00	J-55	1.00
Casing Pup Joint	1	9 5/8	8.92	36.00	J-55	9.10
Casing Joints	63	9 5/8	8.92	36.00	J-55	2,717.64
Float Collar	1	9 5/8	8.92	36.00	J-55	1.40
Casing Joints	1	9 5/8	8.92	36.00	J-55	38.20
Float Shoe	1	9 5/8	8.92	36.00	J-55	1.90

Surface Casing, 280.6ftKB

Casing Description	OD (in)	Wt/Len (lb/ft)	String Grade	Top (ftKB)	Set Depth...	Depth C...	ID (in)
Surface Casing	13 3/8	54.50	J-55	25.0	280.6		12.62

Casing Components

Item Des	Jts	OD (in)	ID (in)	Wt (lb/ft)	Grade	Len (ft)
Casing Joints	5	13 3/8	12.62	54.50	J-55	215.25
Float Collar		13 3/8	12.62			1.55
Casing Joints	1	13 3/8	12.62	54.50	J-55	36.90
Float Shoe		13 3/8	12.62			1.90

Cement

Surface Cement, Casing, 4/29/2019 17:30

Description	String	Cementing Start Date	Cementing End Date
Surface Cement	Surface Casing, 280.6ftKB	4/29/2019 17:30	4/29/2019 18:45

Cement Stages

Stg #	Top (ftKB)	Btm (ftKB)	Com
1	25.0	280.6	315 sx (66.2 bbl) Type G Cement

Intermediate Cement, Casing, 6/2/2019 04:00

Description	String	Cementing Start Date	Cementing End Date
Intermediate Cement	Intermediate Casing, 2,794.0ftKB	6/2/2019 04:00	6/2/2019 07:00

Cement Stages

Stg #	Top (ftKB)	Btm (ftKB)	Com
1	28.0	2,794.0	Lead: 595 sx (201.3 bbl) Type G Tail: 180 sx (36.9 bbl) Type G

Production Casing Cement, Casing, 6/15/2019 11:30

Description	String	Cementing Start Date	Cementing End Date
Production Casing Cement	Production, 15,676.0ftKB	6/15/2019 11:30	6/15/2019 16:30

Cement Stages

Stg #	Top (ftKB)	Btm (ftKB)	Com
1	29.0	15,690.0	199 bbls (585sx) Lead cement at 12.4 ppg, 526 bbls (2175 sx) of Tail cement at 13.3 ppg.

Wellbores

Original Hole

Wellbore Name	Parent Wellbore
Original Hole	Original Hole

Wellbore Sections

Section Des	Size (in)	Act Top (ftKB)	Act Btm (ftKB)
Surface Hole	17 1/2	25.0	285.0
Intermediate Hole	12 1/4	285.0	2,809.0
Production Hole	8 1/2	2,809.0	15,690.0

Sante Fe Main Office
Phone: (505) 476-3441

General Information
Phone: (505) 629-6116

Online Phone Directory
<https://www.emnrd.nm.gov/oecd/contact-us>

State of New Mexico
Energy, Minerals and Natural Resources
Oil Conservation Division
1220 S. St Francis Dr.
Santa Fe, NM 87505

CONDITIONS

Action 308285

CONDITIONS

Operator: ENDURING RESOURCES, LLC 6300 S Syracuse Way Centennial, CO 80111	OGRID: 372286
	Action Number: 308285
	Action Type: [C-103] Sub. Workover (C-103R)

CONDITIONS

Created By	Condition	Condition Date
andrew.fordyce	Accepted for record.	12/5/2025