

Well Name: BIG EDDY	Well Location: T21S / R28E / SEC 33 / SESW / 32.4312251 / -104.0938859	County or Parish/State: EDDY / NM
Well Number: 64	Type of Well: CONVENTIONAL GAS WELL	Allottee or Tribe Name:
Lease Number: NMLC070061	Unit or CA Name: BIG EDDY UNIT - MORROW M	Unit or CA Number: NMNM68294S
US Well Number: 3001523131	Operator: XTO PERMIAN OPERATING LLC	

Subsequent Report

Sundry ID: 2867727

Type of Submission: Subsequent Report	Type of Action: Plug and Abandonment
Date Sundry Submitted: 09/30/2025	Time Sundry Submitted: 11:50
Date Operation Actually Began: 05/10/2025	

Actual Procedure: XTO Permian Operating LLC, has P&A'd the above mentioned well per the attached P&A Summary Report and WBD. CBL has also been submitted.

Sbsq P&A Sundry submitted on 8/11/25 but due to AFMSS attachment issues, I had to resubmit today per BLM.

SR Attachments

- Actual Procedure
- Big_Eddy_064_CBL_6_6_25_20250930114810.pdf
 - Big_Eddy_064_P_A_Sbsq_Summary_Rpt_wWBD_20250930114420.pdf

Well Name: BIG EDDY	Well Location: T21S / R28E / SEC 33 / SESW / 32.4312251 / -104.0938859	County or Parish/State: EDDY / NM
Well Number: 64	Type of Well: CONVENTIONAL GAS WELL	Allottee or Tribe Name:
Lease Number: NMLC070061	Unit or CA Name: BIG EDDY UNIT - MORROW M	Unit or CA Number: NMNM68294S
US Well Number: 3001523131	Operator: XTO PERMIAN OPERATING LLC	

Operator

I certify that the foregoing is true and correct. Title 18 U.S.C. Section 1001 and Title 43 U.S.C. Section 1212, make it a crime for any person knowingly and willfully to make to any department or agency of the United States any false, fictitious or fraudulent statements or representations as to any matter within its jurisdiction. Electronic submission of Sundry Notices through this system satisfies regulations requiring a

Operator Electronic Signature: SHERRY MORROW

Signed on: SEP 30, 2025 11:48 AM

Name: XTO PERMIAN OPERATING LLC

Title: Regulatory Analyst

Street Address: 6401 HOLIDAY HILL ROAD BLDG 5

City: MIDLANDState: TX

Phone: (432) 218-3671

Email address: SHERRY.MORROW@EXXONMOBIL.COM

Field

Representative Name:

Street Address:

City:State:Zip:

Phone:

Email address:

BLM Point of Contact

BLM POC Name: JAMES A AMOS

BLM POC Title: Acting Assistant Field Manager

BLM POC Phone: 5752345927

BLM POC Email Address: JAMOS@BLM.GOV

Disposition: AcceptedDisposition Date: 09/30/2025

Signature: James A Amos

Big Eddy 064
API Number 30-015-23131
P&A Summary Report

5/10/25: MIRU.

5/11/25: ND WH, NU BOP.

5/12/25: Attempt to release packer, unsuccessful. RIH w/CCL-GR 1.80' inside tubing to tag packer location, lost tension at 12,065. Packer depth recorded on tubing details shows 12,035. CCL from wireline read collars from 12,037- 12,041' (4'). Packer details shows 7'.81" measurement. POOH w/wireline. Engineering department contact BLM for tubing cut approval above packer. Approved to cut at 12,035. RIH w/wireline and jet cutter to cut at 12,035' with 12k over string weight on tubing. POOH w/WL attempt to free cut pipe, string weight 79k, pulling 10 over working pipe to free, pulling 20 over working pipe, unsuccessful. RU power swivel and attempt to free pipe from cut point, 79k string weight pulling 110 pulling pipe up & down.

5/13/25: MIRU WL. RIH w-10.62' BHA tools. RIH calibrate tools @ 3596' free point.

-12,051' tag WLM 200lbs loss tension 1690#'s original tension at depth
-12,005' start free point access 80k pull- 95k pull. 9 attempts = 100% stuck
-11,005' free point test 80k-95k pull. 9 attempts= 100% free
-10,516' free point test 80k-95k pull. 3 attempts= 100% stuck
-11,260' free point test 80k-95k-100k pull. 9 attempts= 30% free
-11,160' free point test 80k-95k pull. 5 attempts=100% free
-11,196' free point test 80k-95k pull. 5 attempts= 100% free
-11,235' free point test 80k-95k pull. 5 attempts= POOH LD free point tools pump 145 bbls to break circulation clearing debris from casing to possibly free stuck pipe. Cut pipe at 100% free point. RIH to 11,200', pulling 20k over jet cut 2 7/8 pipe, leaving 835' fish from previous jet cut at 12,035', POOH w/WL and rig down WL tools and equipment. Commence LD ops pull string 76k, LD wrap around hanger, 2x2' pup joints 1x10' pup joint, 1x6' pup joint, 4x 27/8 singles. SDFN.

5/14/25: Encounter issues testing BOP, replacing ring gaskets, setting test hangers, was able to successfully test BOP, both pipe rams and blind rams for 250 low - 2000 high for 5 mins. Test Good. RU work floor, LD 130 singles of 2 7/8 L80 production string. secure well & SDFN.

5/15/25: Start laying down 2 7/8 L80 tubing from cut point made at 11,200, removing pipe from racks and placing production string on side of location for future cement ops, checking for pin holes. no pin holes observed lay down 352 singles in total. Finish LD all production string. a total of #344 joints of 2 7/8 L70 8rnd and 10' cut were layed down. RIH w/ BHA (4 3/4 x 4 1/2 WP rotary shoe, 15x4.5 washover pipe, 4.5 pin x 2 7/8 box top bushin PH6, 3 3/4 x 2 7/8 ph6 LBS, 3 3/4 x 2 7/8 ph6 jar, 4x 2 7/8 ph6 pup joint for guide & 30 x 2/78 ph6 tubing workstring. EOT 1,375; for kill string to secure well. Secure well for the night, close rams, lock rams, install FOSV.

5/16/25: Continue picking up 2 7/8 PH6 work string to 10,893.78 #334 BHA included. Install FOSV, close and lock rams, secure well valves. SDFN.

5/17/25: 3rd party welders conducting inspection on draw works, concluded that the Lebus groove needed to be replaced alongside tubing line.

5/19/25: Install night caps on tubing and casing valves, ensure pipe rams are locked with accumulator system charged (ON). Rig repairs being made.

5/23/25: TIH pu 8 jnts of 2 7/8 p-110 ph6, tagged w jnt #342 2' out @11,142', tagged tof and rotated to get over it, repeated this step 3 times making sure in fact it was the tof @ 11,142', picked up 6' above tof, SW. SDFN.

5/24/25: Finished rigging up set up, got over the fish going down and tagged fill @11,162', washed down to 11,177', circulated 230 bbls 10# brine to condition and balance the hole, cont going down washing over down to 11,556 and circ bottoms up, cont washing over down to 11,616' & tagged with TB @11,201', Circulated two bottoms up to clean hole, rigged down swivel and removed rubber. Laid down 1 jnt and stood back 60 jnts. SW & SDFN.

5/25/25: POOH with total of 357 jnts, laid down BHA. Picked up new fishing BHA, TIH with 332 jnts leaving EOT@10,423'. SW. SDFN.

5/26/25: Tih w 45 jnts and tagged tof @11,208', rigged up swivel, dressed off fish neck, latched on and pulled 30 k over, worked with it trying to pull free jaring out not being able to get tbg unstuck. SW & SDFN.

5/27/25: RU WL, RIH & cut tbg @11,600' with 1.875 cutter, WL pooh & rigged down, pulled in to tbg making jars go off several times until tbg separated. Pulled oth with 98 stands, SW. SDFN.

5/28/25: Pooh standing back 150 jnts and laid down 7 jnts, LD BHA, LD fish (11 full jnts, top and bottom cut pieces. Picked up new BHA (SHOE - 16 jnts 4.5 WP. TB. BS. Oil jars. TIH w 350 jnts from derrick, rigged up swivel with jnt #351 EOT 11,525'. SW. SDFN.

5/29/25: Washed over going down making connections, tagged pkr @12,050'. Circulated two bottoms up to clean hole, rigged down swivel, rigged up work floor getting ready to pooh. SDFN.

5/30/25: POOH 184 stands, laid down. WP BHA. PU fishing BHA. Tih with 346 jnts from the derrick leaving shoe @10,872'. SW. SDFN.

6/2/25: . Rih w 24 jnts from derrick. Picked up 2 jnts tagging top of fish with jnts #370 6' in @11,897', Laid down 1 jnt and spaced out adding 8' & 10' subs. Rigged up swivel, dressed off fish neck. latch on, pulled to 110k making sure we had a good latch, jarred on fish attempting to separate tbg from old cut. Rigged up wire line, rih & tagged @12,045' (cutter), 12,036 (CCL), and cut @12,045', WLM, WL pooh. Attempted to separate tbg jaring on it, we were unable to break tbg free, went through the release motions not having any luck, rigged up swivel, again tried to unset pkr not having any luck, attempted to get off the on & off, got off of it, went back down to make sure we could latch and verify it was the on and off tool but we couldn't latch back on. Rigged down WL. Pooh with 49 stands leaving overshot @10,552'. SW, SDFN.

6/3/25: Pooh with total of 370 jnts and BHA, laid down fish (11 jnts & on & off tool). RU WL & rih with CIBP, tagged pkr @12,054', set CIBP @12,045', tagged CIBP to confirm depth, WL pooh & rigged down, laid down WL lubricator & flange adaptor. SW. SDFN.

6/4/25: TIH w HD pkr & 192 jnts leaving EOT @6,010', set pkr with 15k of compression. Pressure tested csg and CIBP below pkr to 700 psi holding solid for 30 mins, unset pkr, SW, SDFN.

6/5/25: Pooh w tbg starting @6,010' pulling 1,000' at a time testing csg looking for a hole in csg w last test being @2,191'. Laid down remaining 70 jnts and pkr. TIH with tbg laying down tbg at the same time laying down a total of 278 jnts and leaving 92 jnts still in the derrick to lay down. SW. SDFN.

6/6/25: TIH w 92 jnts from derrick. Laid down 92 jnts. Racked 100 2 7/8 jnts, cleaned threads, numbered and tallied tbg. RU WL. RIH and CBL from CIBP up to surface, prep tbg while WL ops, RD WL. tih with 4' ps, 64 jnts of 2 7/8 8rnd leaving eot @2,037', SW & SDFN.

6/7/25: Cont tih numbering & tallying tbg, 290 jnts of 2 7/8 8rnd leaving eot @9,221'. Cont tih picking up tbg, tagged CIBP @12,045' jnt #379 all in. Circulated the hole with 261 bbls of 10# salt gel, SW, SDFN.

6/8/25: Cmt ops 205 sxs class H cmt 1.06 yield, 1,664.5 fof, 38.6 slurry bbls. Laid down 53 jnts & stood back 32 jnts leaving eot @9,348' 1,000' above ctoc. WOC total of 6 hrs for class H cmt. tih to tag toc found tbg stuck, dropping and catching tbg attempting to break free. SW. SDFN.

6/9/25: Circulated the hole while pulling 30k over the weigh attempting to break free. Spotted and rigged up wire line, rih and got outside the tbg tagging inside the csg @9,410', WL pooh and rigged down. Circulated the hole with dye and 230 bbls of brine, getting light dye back after 80 bbls, went ahead and pumped the rest making sure it was not the remainings of other circulations. SW. SDFN.

6/11/25: Rih with free point, Cut tbg @9,010'.

6/12/25: PT csg to 500 psi holding solid for 30 mins. Pooh laying down tbg. Cont pooh laying down a total of 283 jnts and the cut piece while numbering and tallying tbg. PT csg to 645 psi loading the hole with 23 bbls 10#, lost 25 psi 3.8% after 30 mins, bled off pressure, sw, SDFN.

6/13/25: TIH picking up work string and prep tbg, rih with total of 117 jnts with shoe @7,140', SW, SDFW.

6/16/25: TIH picking up tbg and tagged with jnt #277 @9,019'. Rigged up the swivel, went down milling cement down to 9,174' making connections. Circulated the hole with 80 bbls 10# to clean the hole. RD swivel, Pooh laying down 11 jnts leaving 272 jnts ith leaving shoe @8,888', SW. SDFN.

6/17/25: LD WP & Tih w fishing BHA & WS. Tagged tof @9,019'. SW. SDFN.

6/18/25: Rigged up swivel, added 6'-8'-10' subs spacing out to dress fish neck and latch on, dressed fish neck, reversed out 70 bbls, latched on and pulled 25k over to confirm good latch, jarred on fish twice not seeing good results, rigged down swivel. Rigged up wire line, rih with 1.9 GR down to 9,200', pooh and changed tools, rih with free point tools, free pointed tbg, pooh and laid down tools, rih with 1.9 cutter and cut tbg @9,164', pooh and RD WL. Pooh with 69 jnts, SW. SDFN.

6/19/25: Pooh with a total of 287 jnts, laid down BHA and fish (138.66 ft of tbg). Put BHA together to go dress the fish neck, tih w 94 jnts from derrick. Cont tih from derick for a total of 286 jnts, picked up 6 jnts to tag fish @9,157 w jnt #293 2' in, LD 1 jnt. Rigged up swivel adding a 10' sub, dressed tof, RD swivel. Pooh LD 12 jnts, standing back 62 jnts, SW, SDFN.

6/20/25: Cont pooh with 213 jnts, laid down BHA & shoe. Picked up WP BHA tools. Tih w total of 281jnts and tagged 15' out @9,157' tof. Rigged up swivel. SW. SDFN.

6/21/25: Rigged up swivel, washed over starting @9,157' and got stuck @9,266'. Freed up the tbg with jars and circulation. Circulated the hole 2 bottoms up 120 bbls to clean hole. Continue washing over the fish circulating bottoms up every 5 jnts getting passed the cmt @9,330' and fish fell down. SW, left tbg @9,766', SDFN.

6/22/25: Continued going down cleaning cmt, tagged toc @10,485'. Circulated two bottoms up 150 bbls. Pressure tested csg to 500 psi for 30 mins, tst good. Rigged down swivel and got work floor ready to pooh laying down tbg. Pooh laying down 96 jnts, SW, SDFN.

6/23/25: Pooh LD WS. LD BHA & fish.

6/24/25: Tih picking up tbg hydrotesting. SW, SDFN.

6/25/24: TIH testing tbg every 1000' to 1000 psi, found bad tbg at 6,500' and decided to lay down all tbg string. SW, SDFN.

6/26/25: Prep tbg, rigged up hydrotesters, tih with 93 jnts leaving eot @3,032', SW, SDFN.

6/27/25: Cont tih picking up tbg and hydrotesting 196 jnts. TIH testing tbg and prep along the way for a total of 294 jnts and 10' sub ith leaving eot @9,577'. Rigged up cmt pump and circulated the hole to condition with 210 bbls of saltgel, SW, SDFWE.

6/30/25: Cmt ops, pumped 85 sxs class H 1.06 yield from 9,577' - 8,878', pulled up 1,000' above ctoc, reversed out with two tbg capacities, pulled up 1,000' leaving eot @6,772'. WOC. Tih & tagged toc @8,878'. Reversed circulate to clean hole with 1.5 tbg capacities, sw, SDFN.

7/1/25: Pooh laying down 91 jnts and stood back 184 jnts. Rih ad-1/ 144 jts tbg, eot @ 4690', set pkr. MIRU WL, ru lube, rih/ perf @ 6000', pooh WL. Establish rate of 2.4 bpm @ 700 psi. SDFN.

7/2/25: Cmt ops, sqz 72 sxs class C 1.32 yield, displaced w/ 50.5 bbls, CTOC @ 5700', pumped @ 2 bpm/ 400 psi, shut well in, WOC. RIH, Tag cmt @ 5635'. Pooh/ LD 72 jts tbg, stand back 44 in derrick, eot @ 2221', set pkr. MIRU WL, ru lube, rih/ perf @ 4465', pooh WL. SDFN.

7/3/25: Cmt ops, sqz 272 sxs class C 1.32 yield, displaced w/ 37.5 bbls, CTOC @ 3300', WOC. RIH, Tag cmt @ 3200'. Pooh/ LD 39 jts tbg, stand back 30 in derrick, eot @ 1,404' (43 jts in hole), set pkr. SDFN.

7/4/25: Perf @2,632'. Sqzed 65 sxs class C 1.32 yield. SW. SDFN.

7/5/25: TIH & tagged toc @2,378'. Pooh laying down all tbg. Rigged up wire line, pressure tested lub to 1,000 psi, Wire line ops, perf @500', pooh and rigged down. Nipple down BOP. Flanged up B1 adapter. Pumped surface plug 125 sxs of class C 1.32 yield cement down the 5 1/2 out the 8 5/8 leaving 300 psi on them, switched to surface csg and filled it up leaving 300 psi on it also. RDMO.

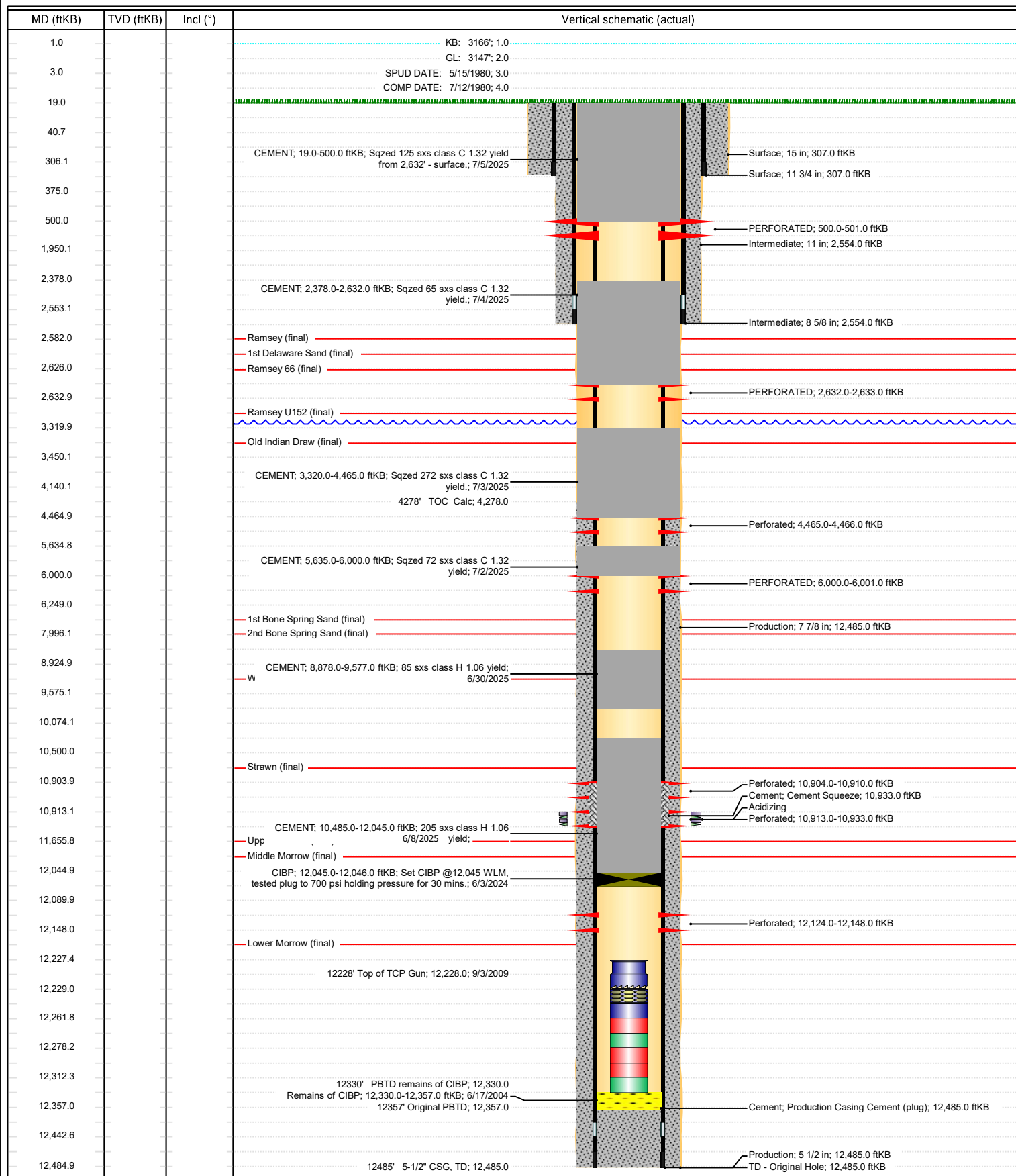
7/29/25: WH cutoff and DHM set.



Schematic - Vertical with Perfs

Well Name: Big Eddy 064

API/UWI 3001523131	SAP Cost Center ID 1135842001	Permit Number	State/Province New Mexico	County Eddy
Surface Location T21S-R28E-S33	Spud Date 5/15/1980 22:00	Original KB Elevation (ft) 3,166.00	Ground Elevation (ft) 3,147.00	KB-Ground Distance (ft) 19.00



Sante Fe Main Office
Phone: (505) 476-3441

General Information
Phone: (505) 629-6116

Online Phone Directory
<https://www.emnrd.nm.gov/oed/contact-us>

State of New Mexico
Energy, Minerals and Natural Resources
Oil Conservation Division
1220 S. St Francis Dr.
Santa Fe, NM 87505

CONDITIONS

Action 520548

CONDITIONS

Operator: XTO PERMIAN OPERATING LLC. 6401 HOLIDAY HILL ROAD MIDLAND, TX 79707	OGRID: 373075
	Action Number: 520548
	Action Type: [C-103] Sub. Plugging (C-103P)

CONDITIONS

Created By	Condition	Condition Date
gcordero	None	12/16/2025