

Santa Fe Main Office Phone: (505) 476-3441 Fax: (55) 476-3462 General Information Phone: (505) 629-6116 Online Phone Directory Visit: https://www.emnrd.nm.gov/ocd/contact-us/	State of New Mexico Energy, Minerals & Natural Resources Department OIL CONSERVATION DIVISION	C-104 Revised July 9, 2024 Submit Electronically Via OCD Permitting
--	--	---

REQUEST FOR ALLOWABLE AND AUTHORIZATION TO TRANSPORT

Section 1 - Operator and Well Information

Submittal Type: <input type="checkbox"/> Test Allowable (C-104RT) <input checked="" type="checkbox"/> New Well (C-104NW) <input type="checkbox"/> Recomplete (C-104RC) <input type="checkbox"/> Pay Add (C-104RC) <input type="checkbox"/> Amended	
Operator Name: BTA OIL PRODUCERS, LLC	OGRID: 260297
Property Name and Well Number: MESA B 8115 FEDERAL COM 14H	Property Code:326144
Mineral Owner: <input checked="" type="checkbox"/> State <input type="checkbox"/> Fee <input type="checkbox"/> Tribal <input checked="" type="checkbox"/> Federal	API Number: 30-025-46739
Pool Name: WC-025 G-08 S253235G; LWR BONE SPRING	Pool Code: 97903

Section 2 – Surface Location

UL	Section	Township	Range	Lot	Ft. from N/S	Ft. from E/W	Latitude	Longitude	County
A	7	26S	33E		400 N	800 E	32.064198	103.605431	LEA

Section 3 – Completion Information

Producing Method FLOW	Ready Date 5/11/2022	Perforations MD 12000 - 16820	Perforations TVD 11795 - 11957
--------------------------	-------------------------	----------------------------------	-----------------------------------

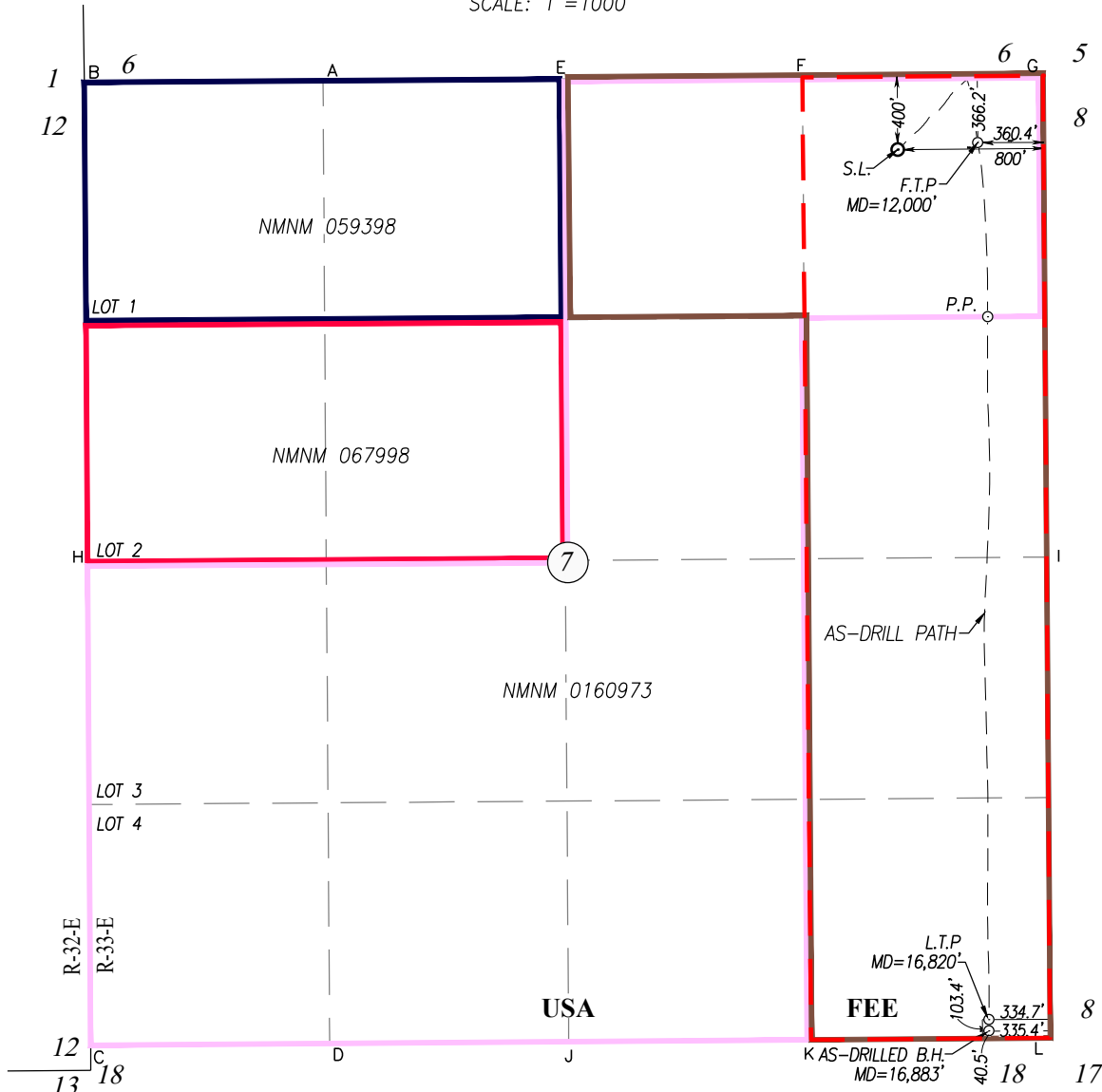
Section 4 – Action IDs for Submissions and Order Numbers

List Action IDs for Drilling Sundries	Was an Order required / needed (Y/N), if yes list Order number:
C-104 RT Action ID (if C-104NW):	Communitization Agreement <input checked="" type="checkbox"/> Yes <input type="checkbox"/> No, Order No. NMNM082045
Surface Casing Action ID: 400085	Unit: <input type="checkbox"/> Yes <input checked="" type="checkbox"/> No, Order No.
Intermediate 1 Casing Action ID: 400085	Compulsory Pooling: <input type="checkbox"/> Yes <input checked="" type="checkbox"/> No, Order No.
Intermediate 2 Casing Action ID: 400085	Down Hole Commingling: <input type="checkbox"/> Yes <input checked="" type="checkbox"/> No, Order No.
Production Casing Action ID: 400085	Surface Commingling: <input type="checkbox"/> Yes <input checked="" type="checkbox"/> No, Order No.
All casing was pressure tested in accordance with NMAC XXYes <input type="checkbox"/> No	Non-standard Location: <input type="checkbox"/> Yes <input checked="" type="checkbox"/> No <input type="checkbox"/> Common ownership Order No.
Liner 1 Action ID:	Non-standard Proration: <input type="checkbox"/> Yes <input checked="" type="checkbox"/> No, Order No.
Casing was installed prior to OCD’s Action ID system (Y/N):	Simultaneous Dedication: <input type="checkbox"/> Yes <input checked="" type="checkbox"/> No, Order No.

Section 5 - Operator Signature and Certification

XI hereby certify that the required Water Use Report has been, or will be, submitted for this well’s completion.	
XI hereby certify that the required Fracfocus disclosure has been, or will be, submitted for this well’s completion.	
XI hereby certify that the rules of the Oil Conservation Division have been complied with and that the information given above is true and complete to the best of my knowledge and belief.	
Name KATY REDDELL	
Title REGULATORY ANALYST	Date 3/13/2025

SCALE: 1"=1000'



CORNER COORDINATES TABLE

NAD 27 NME

A	-	Y= 388173.2 N, X= 722487.8 E
B	-	Y= 388164.6 N, X= 721179.7 E
C	-	Y= 382884.1 N, X= 721214.3 E
D	-	Y= 382894.4 N, X= 722524.0 E
E	-	Y= 388181.7 N, X= 723796.0 E
F	-	Y= 388191.7 N, X= 725114.9 E
G	-	Y= 388201.6 N, X= 726433.9 E
H	-	Y= 385524.3 N, X= 721197.0 E
I	-	Y= 385561.3 N, X= 726453.8 E
J	-	Y= 382904.7 N, X= 723833.8 E
K	-	Y= 382914.1 N, X= 725153.5 E
L	-	Y= 382923.6 N, X= 726473.2 E

CORNER COORDINATES TABLE

NAD 83 NME

A	-	Y= 388230.6 N, X= 763674.7 E
B	-	Y= 388222.0 N, X= 762366.5 E
C	-	Y= 382941.4 N, X= 762401.4 E
D	-	Y= 382951.7 N, X= 763711.1 E
E	-	Y= 388239.1 N, X= 764982.9 E
F	-	Y= 388249.1 N, X= 766301.8 E
G	-	Y= 388259.0 N, X= 767620.8 E
H	-	Y= 385581.7 N, X= 762384.0 E
I	-	Y= 385618.6 N, X= 767640.8 E
J	-	Y= 382961.9 N, X= 765021.0 E
K	-	Y= 382971.4 N, X= 766340.6 E
L	-	Y= 382980.8 N, X= 767660.3 E

GEODETTIC COORDINATES

NAD 27 NME

SURFACE LOCATION	
Y= 387795.7 N	400' FNL & 800' FEL
X= 725637.1 E	
LAT.=32.064073° N	
LONG.=103.604961° W	
FIRST TAKE POINT	
NAD 27 NME	
Y= 387832.8 N	366.2' FNL & 360.4' FEL
X= 726076.3 E	
LAT.=32.064166° N	
LONG.=103.603542° W	
PENETRATION POINT	
NAD 27 NME	
Y= 386879.3 N	1320.3' FNL & 313.7' FEL
X= 726130.2 E	
LAT.=32.061544° N	
LONG.=103.603389° W	
LAST TAKE POINT	
NAD 27 NME	
Y= 383024.6 N	103.4' FSL & 334.7' FEL
X= 726137.8 E	
LAT.=32.050948° N	
LONG.=103.603449° W	
AS-DRILLED BOTTOM HOLE LOCATION	
NAD 27 NME	
Y= 382961.7 N	40.5' FSL & 335.4' FEL
X= 726137.6 E	
LAT.=32.050775° N	
LONG.=103.603451° W	

GEODETTIC COORDINATES

NAD 83 NME

SURFACE LOCATION	
Y= 387853.1 N	
X= 766824.0 E	
LAT.=32.064198° N	
LONG.=103.605431° W	
FIRST TAKE POINT	
NAD 83 NME	
Y= 387890.1 N	366.2' FNL & 360.4' FEL
X= 767263.3 E	
LAT.=32.064291° N	
LONG.=103.604012° W	
PENETRATION POINT	
NAD 83 NME	
Y= 386936.6 N	1320.3' FNL & 313.7' FEL
X= 767317.1 E	
LAT.=32.061669° N	
LONG.=103.603859° W	
LAST TAKE POINT	
NAD 83 NME	
Y= 383081.8 N	103.4' FSL & 334.7' FEL
X= 767324.9 E	
LAT.=32.051073° N	
LONG.=103.603918° W	
AS-DRILLED BOTTOM HOLE LOCATION	
NAD 83 NME	
Y= 383018.9 N	40.5' FSL & 335.4' FEL
X= 767324.7 E	
LAT.=32.050900° N	
LONG.=103.603920° W	

NOTE: AS-DRILLED BOTTOM HOLE, LAST TAKE POINT AND FIRST TAKE POINT PLOTTED FROM DATA FURNISHED BY KLX DIRECTIONAL DRILLING ON FEBRUARY 06, 2022.



BTA Oil Producers, LLC

Lea County, NM (NAD 83)

Sec 7, T26-S, R33-E

Mesa B 8115 Fed Com #14H

Wellbore #1

Design: Wellbore #1

Survey Report - Geographic

06 February, 2022





Survey Report - Geographic



Company:	BTA Oil Producers, LLC	Local Co-ordinate Reference:	Well Mesa B 8115 Fed Com #14H
Project:	Lea County, NM (NAD 83)	TVD Reference:	WELL @ 3327.0usft (Patterson #566)
Site:	Sec 7, T26-S, R33-E	MD Reference:	WELL @ 3327.0usft (Patterson #566)
Well:	Mesa B 8115 Fed Com #14H	North Reference:	Grid
Wellbore:	Wellbore #1	Survey Calculation Method:	Minimum Curvature
Design:	Wellbore #1	Database:	EDM 5000.1 Single User Db

Project	Lea County, NM (NAD 83)		
Map System:	US State Plane 1983	System Datum:	Mean Sea Level
Geo Datum:	North American Datum 1983		
Map Zone:	New Mexico Eastern Zone		

Site	Sec 7, T26-S, R33-E				
Site Position:		Northing:	387,854.60 usft	Latitude:	32° 3' 51.113 N
From:	Map	Easting:	767,023.90 usft	Longitude:	103° 36' 17.227 W
Position Uncertainty:	0.0 usft	Slot Radius:	13-3/16 "	Grid Convergence:	0.39 °

Well	Mesa B 8115 Fed Com #14H					
Well Position	+N/-S	0.0 usft	Northing:	387,853.10 usft	Latitude:	32° 3' 51.111 N
	+E/-W	0.0 usft	Easting:	766,824.00 usft	Longitude:	103° 36' 19.550 W
Position Uncertainty		0.0 usft	Wellhead Elevation:	usft	Ground Level:	3,302.0 usft

Wellbore	Wellbore #1				
Magnetics	Model Name	Sample Date	Declination (°)	Dip Angle (°)	Field Strength (nT)
	HDGM2021	12/28/2021	6.38	59.63	47,478.90000000

Design	Wellbore #1				
Audit Notes:					
Version:	1.0	Phase:	ACTUAL	Tie On Depth:	0.0
Vertical Section:	Depth From (TVD) (usft)	+N/-S (usft)	+E/-W (usft)	Direction (°)	
	0.0	0.0	0.0	174.01	

Survey Program	Date	2/6/2022			
From (usft)	To (usft)	Survey (Wellbore)	Tool Name	Description	
122.0	16,883.0	KLX MWD (Wellbore #1)	MWD	OWSG MWD - Standard	

Survey										
Measured Depth (usft)	Inclination (°)	Azimuth (°)	Vertical Depth (usft)	+N/-S (usft)	+E/-W (usft)	Map Northing (usft)	Map Easting (usft)	Latitude	Longitude	
0.0	0.00	0.00	0.0	0.0	0.0	387,853.10	766,824.00	32° 3' 51.111 N	103° 36' 19.550 W	
122.0	0.50	350.10	122.0	0.5	-0.1	387,853.62	766,823.91	32° 3' 51.117 N	103° 36' 19.551 W	
First MWD Survey @ 122.0' MD / 122.0' TVD										
245.0	0.30	8.00	245.0	1.4	-0.1	387,854.47	766,823.86	32° 3' 51.125 N	103° 36' 19.551 W	
364.0	0.30	23.70	364.0	2.0	0.0	387,855.06	766,824.03	32° 3' 51.131 N	103° 36' 19.549 W	
421.0	0.30	24.00	421.0	2.2	0.2	387,855.34	766,824.15	32° 3' 51.134 N	103° 36' 19.548 W	
607.0	0.30	42.20	607.0	3.0	0.7	387,856.14	766,824.67	32° 3' 51.142 N	103° 36' 19.542 W	
700.0	0.50	62.10	700.0	3.4	1.2	387,856.51	766,825.19	32° 3' 51.145 N	103° 36' 19.536 W	
793.0	0.70	66.70	793.0	3.8	2.1	387,856.93	766,826.08	32° 3' 51.149 N	103° 36' 19.525 W	
886.0	0.70	56.20	886.0	4.4	3.1	387,857.47	766,827.07	32° 3' 51.155 N	103° 36' 19.514 W	
928.0	0.70	34.30	928.0	4.7	3.4	387,857.82	766,827.43	32° 3' 51.158 N	103° 36' 19.510 W	
1,053.0	0.80	51.90	1,053.0	5.9	4.5	387,858.99	766,828.54	32° 3' 51.169 N	103° 36' 19.496 W	



Survey Report - Geographic



Company:	BTA Oil Producers, LLC	Local Co-ordinate Reference:	Well Mesa B 8115 Fed Com #14H
Project:	Lea County, NM (NAD 83)	TVD Reference:	WELL @ 3327.0usft (Patterson #566)
Site:	Sec 7, T26-S, R33-E	MD Reference:	WELL @ 3327.0usft (Patterson #566)
Well:	Mesa B 8115 Fed Com #14H	North Reference:	Grid
Wellbore:	Wellbore #1	Survey Calculation Method:	Minimum Curvature
Design:	Wellbore #1	Database:	EDM 5000.1 Single User Db

Survey										
Measured Depth (usft)	Inclination (°)	Azimuth (°)	Vertical Depth (usft)	+N/-S (usft)	+E/-W (usft)	Map Northing (usft)	Map Easting (usft)	Latitude	Longitude	
1,146.0	3.50	53.00	1,145.9	8.0	7.3	387,861.10	766,831.32	32° 3' 51.190 N	103° 36' 19.464 W	
1,239.0	4.00	57.60	1,238.7	11.4	12.3	387,864.55	766,836.33	32° 3' 51.224 N	103° 36' 19.406 W	
1,332.0	3.60	55.70	1,331.5	14.8	17.5	387,867.93	766,841.48	32° 3' 51.257 N	103° 36' 19.345 W	
1,426.0	4.10	41.50	1,425.3	19.0	22.1	387,872.11	766,846.14	32° 3' 51.298 N	103° 36' 19.291 W	
1,519.0	4.60	42.60	1,518.0	24.2	26.9	387,877.35	766,850.87	32° 3' 51.350 N	103° 36' 19.236 W	
1,612.0	4.70	43.20	1,610.7	29.8	32.0	387,882.87	766,856.00	32° 3' 51.404 N	103° 36' 19.176 W	
1,705.0	4.80	44.60	1,703.4	35.3	37.3	387,888.42	766,861.34	32° 3' 51.458 N	103° 36' 19.113 W	
1,798.0	4.50	46.30	1,796.1	40.6	42.7	387,893.71	766,866.71	32° 3' 51.510 N	103° 36' 19.050 W	
1,891.0	4.40	47.30	1,888.8	45.5	48.0	387,898.65	766,871.97	32° 3' 51.559 N	103° 36' 18.989 W	
1,984.0	4.30	47.30	1,981.5	50.3	53.2	387,903.43	766,877.16	32° 3' 51.606 N	103° 36' 18.928 W	
2,077.0	4.70	46.10	2,074.2	55.3	58.5	387,908.44	766,882.46	32° 3' 51.655 N	103° 36' 18.866 W	
2,170.0	4.80	45.20	2,166.9	60.7	64.0	387,913.82	766,887.97	32° 3' 51.708 N	103° 36' 18.802 W	
2,264.0	4.30	42.80	2,260.6	66.1	69.2	387,919.18	766,893.16	32° 3' 51.761 N	103° 36' 18.741 W	
2,357.0	4.40	40.60	2,353.4	71.3	73.8	387,924.45	766,897.85	32° 3' 51.813 N	103° 36' 18.686 W	
2,450.0	4.60	38.50	2,446.1	77.0	78.5	387,930.07	766,902.49	32° 3' 51.868 N	103° 36' 18.632 W	
2,543.0	4.20	51.40	2,538.8	82.0	83.5	387,935.12	766,907.47	32° 3' 51.918 N	103° 36' 18.573 W	
2,636.0	4.20	53.50	2,631.5	86.2	88.9	387,939.27	766,912.87	32° 3' 51.958 N	103° 36' 18.510 W	
2,729.0	4.10	53.70	2,724.3	90.2	94.3	387,943.26	766,918.29	32° 3' 51.997 N	103° 36' 18.447 W	
2,822.0	4.40	50.10	2,817.0	94.4	99.7	387,947.52	766,923.71	32° 3' 52.039 N	103° 36' 18.384 W	
2,915.0	4.40	51.30	2,909.8	98.9	105.2	387,952.04	766,929.23	32° 3' 52.083 N	103° 36' 18.319 W	
3,008.0	4.40	50.60	3,002.5	103.4	110.8	387,956.53	766,934.77	32° 3' 52.128 N	103° 36' 18.254 W	
3,101.0	4.40	47.30	3,095.2	108.1	116.1	387,961.21	766,940.15	32° 3' 52.174 N	103° 36' 18.192 W	
3,194.0	4.00	44.90	3,188.0	112.8	121.1	387,965.93	766,945.06	32° 3' 52.220 N	103° 36' 18.134 W	
3,288.0	4.30	43.80	3,281.7	117.7	125.8	387,970.80	766,949.81	32° 3' 52.268 N	103° 36' 18.079 W	
3,381.0	3.80	41.50	3,374.5	122.5	130.3	387,975.62	766,954.27	32° 3' 52.315 N	103° 36' 18.026 W	
3,474.0	4.60	41.90	3,467.2	127.6	134.8	387,980.71	766,958.80	32° 3' 52.365 N	103° 36' 17.973 W	
3,567.0	5.30	41.90	3,559.9	133.6	140.2	387,986.68	766,964.16	32° 3' 52.424 N	103° 36' 17.911 W	
3,661.0	6.20	42.20	3,653.4	140.6	146.5	387,993.67	766,970.47	32° 3' 52.493 N	103° 36' 17.837 W	
3,754.0	5.40	42.90	3,745.9	147.5	152.8	388,000.60	766,976.82	32° 3' 52.561 N	103° 36' 17.762 W	
3,847.0	5.30	36.70	3,838.5	154.1	158.4	388,007.25	766,982.36	32° 3' 52.626 N	103° 36' 17.697 W	
3,940.0	5.20	28.00	3,931.2	161.3	162.9	388,014.41	766,986.91	32° 3' 52.697 N	103° 36' 17.644 W	
4,033.0	5.30	27.60	4,023.8	168.8	166.9	388,021.94	766,990.88	32° 3' 52.771 N	103° 36' 17.597 W	
4,126.0	5.90	38.90	4,116.3	176.4	171.9	388,029.47	766,995.87	32° 3' 52.845 N	103° 36' 17.539 W	
4,219.0	6.50	47.50	4,208.8	183.6	178.8	388,036.74	767,002.75	32° 3' 52.917 N	103° 36' 17.458 W	
4,313.0	6.40	49.40	4,302.2	190.6	186.7	388,043.75	767,010.65	32° 3' 52.986 N	103° 36' 17.366 W	
4,406.0	6.70	52.80	4,394.6	197.3	194.9	388,050.40	767,018.91	32° 3' 53.051 N	103° 36' 17.269 W	
4,499.0	5.80	66.20	4,487.0	202.5	203.5	388,055.58	767,027.53	32° 3' 53.101 N	103° 36' 17.169 W	
4,592.0	5.80	70.90	4,579.6	205.9	212.3	388,059.01	767,036.27	32° 3' 53.135 N	103° 36' 17.067 W	
4,685.0	5.80	51.10	4,672.1	210.4	220.4	388,063.50	767,044.37	32° 3' 53.179 N	103° 36' 16.972 W	
4,778.0	5.90	40.40	4,764.6	217.0	227.1	388,070.09	767,051.13	32° 3' 53.244 N	103° 36' 16.893 W	
4,872.0	5.30	39.50	4,858.2	224.0	233.0	388,077.12	767,057.02	32° 3' 53.313 N	103° 36' 16.824 W	
4,965.0	5.50	40.90	4,950.7	230.7	238.7	388,083.80	767,062.67	32° 3' 53.378 N	103° 36' 16.758 W	
5,058.0	5.50	39.00	5,043.3	237.5	244.4	388,090.63	767,068.39	32° 3' 53.446 N	103° 36' 16.691 W	
5,151.0	5.70	40.40	5,135.9	244.5	250.2	388,097.61	767,074.19	32° 3' 53.514 N	103° 36' 16.623 W	
5,245.0	6.00	39.90	5,229.4	251.8	256.4	388,104.94	767,080.37	32° 3' 53.586 N	103° 36' 16.551 W	
5,338.0	4.20	34.10	5,322.0	258.4	261.4	388,111.49	767,085.39	32° 3' 53.651 N	103° 36' 16.492 W	
5,431.0	3.30	32.50	5,414.8	263.5	264.7	388,116.57	767,088.74	32° 3' 53.701 N	103° 36' 16.453 W	
5,524.0	3.10	34.80	5,507.7	267.8	267.6	388,120.89	767,091.61	32° 3' 53.744 N	103° 36' 16.419 W	
5,617.0	4.30	36.50	5,600.5	272.7	271.1	388,125.76	767,095.12	32° 3' 53.791 N	103° 36' 16.378 W	
5,711.0	4.80	36.60	5,694.2	278.6	275.6	388,131.75	767,099.56	32° 3' 53.850 N	103° 36' 16.326 W	
5,804.0	5.00	35.70	5,786.8	285.1	280.3	388,138.16	767,104.25	32° 3' 53.914 N	103° 36' 16.271 W	
5,897.0	4.50	32.30	5,879.5	291.4	284.6	388,144.54	767,108.56	32° 3' 53.976 N	103° 36' 16.220 W	
5,990.0	4.70	37.20	5,972.2	297.6	288.8	388,150.65	767,112.82	32° 3' 54.037 N	103° 36' 16.170 W	
6,059.6	4.77	39.83	6,041.6	302.1	292.4	388,155.15	767,116.40	32° 3' 54.081 N	103° 36' 16.128 W	

100' HL Crossed @ 6059.6'MD / 6041.6' TVD



Survey Report - Geographic



Company:	BTA Oil Producers, LLC	Local Co-ordinate Reference:	Well Mesa B 8115 Fed Com #14H
Project:	Lea County, NM (NAD 83)	TVD Reference:	WELL @ 3327.0usft (Patterson #566)
Site:	Mesa 7, T26-S, R33-E	MD Reference:	WELL @ 3327.0usft (Patterson #566)
Well:	Mesa B 8115 Fed Com #14H	North Reference:	Grid
Wellbore:	Wellbore #1	Survey Calculation Method:	Minimum Curvature
Design:	Wellbore #1	Database:	EDM 5000.1 Single User Db

Survey										
Measured Depth (usft)	Inclination (°)	Azimuth (°)	Vertical Depth (usft)	+N/-S (usft)	+E/-W (usft)	Map Northing (usft)	Map Easting (usft)	Latitude	Longitude	
6,083.0	4.80	40.70	6,064.9	303.5	293.7	388,156.64	767,117.66	32° 3' 54.096 N	103° 36' 16.113 W	
6,177.0	4.70	40.20	6,158.6	309.5	298.7	388,162.56	767,122.71	32° 3' 54.154 N	103° 36' 16.054 W	
6,270.0	4.60	38.60	6,251.3	315.3	303.5	388,168.39	767,127.49	32° 3' 54.211 N	103° 36' 15.998 W	
6,363.0	5.70	48.20	6,343.9	321.3	309.3	388,174.38	767,133.26	32° 3' 54.270 N	103° 36' 15.931 W	
6,456.0	6.30	53.10	6,436.4	327.4	316.8	388,180.52	767,140.79	32° 3' 54.330 N	103° 36' 15.843 W	
6,549.0	6.70	50.50	6,528.8	333.9	325.1	388,187.04	767,149.05	32° 3' 54.394 N	103° 36' 15.746 W	
6,643.0	5.00	45.40	6,622.3	340.3	332.2	388,193.40	767,156.20	32° 3' 54.457 N	103° 36' 15.663 W	
6,736.0	4.40	44.40	6,715.0	345.7	337.6	388,198.80	767,161.58	32° 3' 54.510 N	103° 36' 15.600 W	
6,829.0	4.30	47.00	6,807.7	350.6	342.6	388,203.72	767,166.63	32° 3' 54.558 N	103° 36' 15.541 W	
6,922.0	4.00	47.10	6,900.5	355.2	347.6	388,208.31	767,171.56	32° 3' 54.603 N	103° 36' 15.483 W	
7,015.0	4.10	45.70	6,993.2	359.7	352.3	388,212.84	767,176.31	32° 3' 54.648 N	103° 36' 15.427 W	
7,108.0	3.90	45.50	7,086.0	364.3	357.0	388,217.38	767,180.95	32° 3' 54.692 N	103° 36' 15.373 W	
7,201.0	3.80	48.30	7,178.8	368.5	361.5	388,221.64	767,185.50	32° 3' 54.734 N	103° 36' 15.320 W	
7,294.0	2.80	46.90	7,271.6	372.1	365.5	388,225.25	767,189.46	32° 3' 54.770 N	103° 36' 15.274 W	
7,387.0	2.30	38.60	7,364.6	375.2	368.3	388,228.26	767,192.29	32° 3' 54.799 N	103° 36' 15.241 W	
7,481.0	1.00	27.60	7,458.5	377.4	369.8	388,230.46	767,193.84	32° 3' 54.821 N	103° 36' 15.222 W	
7,574.0	0.50	346.00	7,551.5	378.5	370.1	388,231.57	767,194.12	32° 3' 54.832 N	103° 36' 15.219 W	
7,667.0	0.70	318.10	7,644.5	379.3	369.6	388,232.39	767,193.64	32° 3' 54.840 N	103° 36' 15.225 W	
7,760.0	0.70	320.70	7,737.5	380.2	368.9	388,233.25	767,192.90	32° 3' 54.849 N	103° 36' 15.233 W	
7,854.0	0.70	307.50	7,831.5	380.9	368.1	388,234.04	767,192.09	32° 3' 54.857 N	103° 36' 15.243 W	
7,944.0	0.60	302.10	7,921.5	381.5	367.3	388,234.63	767,191.25	32° 3' 54.862 N	103° 36' 15.252 W	
8,037.0	0.30	287.10	8,014.5	381.9	366.6	388,234.96	767,190.60	32° 3' 54.866 N	103° 36' 15.260 W	
8,130.0	0.20	12.10	8,107.5	382.1	366.4	388,235.19	767,190.41	32° 3' 54.868 N	103° 36' 15.262 W	
8,223.0	0.20	292.90	8,200.5	382.3	366.3	388,235.41	767,190.29	32° 3' 54.870 N	103° 36' 15.263 W	
8,316.0	0.30	78.30	8,293.5	382.4	366.4	388,235.52	767,190.38	32° 3' 54.871 N	103° 36' 15.262 W	
8,409.0	0.10	150.60	8,386.5	382.4	366.7	388,235.50	767,190.66	32° 3' 54.871 N	103° 36' 15.259 W	
8,503.0	0.50	146.80	8,480.5	382.0	366.9	388,235.09	767,190.92	32° 3' 54.867 N	103° 36' 15.256 W	
8,596.0	0.60	157.90	8,573.5	381.2	367.3	388,234.30	767,191.33	32° 3' 54.859 N	103° 36' 15.251 W	
8,689.0	0.70	163.20	8,666.5	380.2	367.7	388,233.30	767,191.68	32° 3' 54.849 N	103° 36' 15.247 W	
8,782.0	0.50	129.00	8,759.5	379.4	368.2	388,232.50	767,192.15	32° 3' 54.841 N	103° 36' 15.242 W	
8,875.0	0.60	156.80	8,852.5	378.7	368.7	388,231.80	767,192.66	32° 3' 54.834 N	103° 36' 15.236 W	
8,969.0	0.70	152.00	8,946.4	377.7	369.1	388,230.84	767,193.13	32° 3' 54.825 N	103° 36' 15.231 W	
9,062.0	0.70	100.30	9,039.4	377.1	370.0	388,230.24	767,193.95	32° 3' 54.819 N	103° 36' 15.221 W	
9,155.0	1.00	91.00	9,132.4	377.0	371.3	388,230.12	767,195.32	32° 3' 54.818 N	103° 36' 15.205 W	
9,248.0	1.00	53.20	9,225.4	377.5	372.8	388,230.59	767,196.78	32° 3' 54.822 N	103° 36' 15.188 W	
9,341.0	1.40	63.40	9,318.4	378.5	374.5	388,231.59	767,198.45	32° 3' 54.832 N	103° 36' 15.169 W	
9,435.0	1.90	60.40	9,412.4	379.8	376.8	388,232.87	767,200.83	32° 3' 54.844 N	103° 36' 15.141 W	
9,527.0	1.90	64.10	9,504.3	381.2	379.5	388,234.29	767,203.53	32° 3' 54.858 N	103° 36' 15.110 W	
9,620.0	0.50	246.80	9,597.3	381.7	380.5	388,234.81	767,204.54	32° 3' 54.863 N	103° 36' 15.098 W	
9,713.0	0.80	304.80	9,690.3	381.9	379.6	388,235.02	767,203.64	32° 3' 54.865 N	103° 36' 15.108 W	
9,806.0	1.10	41.00	9,783.3	383.0	379.7	388,236.06	767,203.69	32° 3' 54.876 N	103° 36' 15.108 W	
9,900.0	0.50	21.60	9,877.3	384.0	380.4	388,237.12	767,204.43	32° 3' 54.886 N	103° 36' 15.099 W	
9,993.0	0.60	42.70	9,970.3	384.8	380.9	388,237.86	767,204.91	32° 3' 54.893 N	103° 36' 15.093 W	
10,086.0	1.10	33.70	10,063.3	385.9	381.7	388,238.96	767,205.74	32° 3' 54.904 N	103° 36' 15.083 W	
10,179.0	1.20	29.60	10,156.2	387.4	382.7	388,240.55	767,206.71	32° 3' 54.920 N	103° 36' 15.072 W	
10,272.0	0.90	52.30	10,249.2	388.7	383.8	388,241.84	767,207.77	32° 3' 54.933 N	103° 36' 15.060 W	
10,365.0	1.80	212.40	10,342.2	388.0	383.6	388,241.06	767,207.57	32° 3' 54.925 N	103° 36' 15.062 W	
10,458.0	2.20	227.30	10,435.2	385.5	381.5	388,238.61	767,205.47	32° 3' 54.901 N	103° 36' 15.087 W	
10,551.0	0.70	218.00	10,528.1	383.9	379.8	388,236.95	767,203.81	32° 3' 54.885 N	103° 36' 15.106 W	
10,644.0	1.40	113.80	10,621.1	382.9	380.5	388,236.05	767,204.50	32° 3' 54.876 N	103° 36' 15.098 W	
10,737.0	0.30	250.40	10,714.1	382.4	381.3	388,235.51	767,205.31	32° 3' 54.870 N	103° 36' 15.089 W	
10,831.0	1.20	270.90	10,808.1	382.3	380.1	388,235.44	767,204.09	32° 3' 54.870 N	103° 36' 15.103 W	
10,924.0	1.40	218.30	10,901.1	381.5	378.4	388,234.56	767,202.42	32° 3' 54.861 N	103° 36' 15.122 W	
11,016.0	0.50	192.90	10,993.1	380.2	377.6	388,233.29	767,201.63	32° 3' 54.848 N	103° 36' 15.132 W	
11,109.0	0.90	80.40	11,086.1	379.9	378.3	388,233.02	767,202.26	32° 3' 54.846 N	103° 36' 15.124 W	



Survey Report - Geographic



Company:	BTA Oil Producers, LLC	Local Co-ordinate Reference:	Well Mesa B 8115 Fed Com #14H
Project:	Lea County, NM (NAD 83)	TVD Reference:	WELL @ 3327.0usft (Patterson #566)
Site:	Sec 7, T26-S, R33-E	MD Reference:	WELL @ 3327.0usft (Patterson #566)
Well:	Mesa B 8115 Fed Com #14H	North Reference:	Grid
Wellbore:	Wellbore #1	Survey Calculation Method:	Minimum Curvature
Design:	Wellbore #1	Database:	EDM 5000.1 Single User Db

Survey										
Measured Depth (usft)	Inclination (°)	Azimuth (°)	Vertical Depth (usft)	+N/-S (usft)	+E/-W (usft)	Map Northing (usft)	Map Easting (usft)	Latitude	Longitude	
11,202.0	1.20	33.70	11,179.0	380.8	379.5	388,233.95	767,203.52	32° 3' 54.855 N	103° 36' 15.110 W	
11,273.0	1.80	4.20	11,250.0	382.6	380.0	388,235.68	767,204.01	32° 3' 54.872 N	103° 36' 15.104 W	
11,401.0	1.20	351.80	11,378.0	385.9	380.0	388,239.01	767,203.97	32° 3' 54.905 N	103° 36' 15.104 W	
11,496.0	12.20	163.40	11,472.3	377.2	382.7	388,230.34	767,206.71	32° 3' 54.819 N	103° 36' 15.073 W	
11,591.0	24.60	164.60	11,562.3	348.4	390.9	388,201.54	767,214.86	32° 3' 54.533 N	103° 36' 14.980 W	
11,680.1	38.66	169.87	11,638.0	302.9	400.7	388,156.03	767,224.73	32° 3' 54.082 N	103° 36' 14.869 W	
100' HL Crossed @ 11680.1'MD / 11638.0' TVD										
11,686.0	39.60	170.10	11,642.6	299.3	401.4	388,152.36	767,225.38	32° 3' 54.046 N	103° 36' 14.862 W	
11,780.0	56.50	173.20	11,705.2	230.3	411.2	388,083.42	767,235.24	32° 3' 53.363 N	103° 36' 14.753 W	
11,874.0	61.50	173.20	11,753.6	150.3	420.8	388,003.44	767,244.78	32° 3' 52.571 N	103° 36' 14.648 W	
11,970.0	66.60	168.70	11,795.6	65.2	434.4	387,918.26	767,258.42	32° 3' 51.727 N	103° 36' 14.496 W	
12,064.0	77.50	171.30	11,824.5	-22.8	449.9	387,830.33	767,273.86	32° 3' 50.856 N	103° 36' 14.324 W	
12,158.0	81.40	175.20	11,841.7	-114.5	460.7	387,738.59	767,284.70	32° 3' 49.948 N	103° 36' 14.205 W	
12,252.0	86.70	174.80	11,851.5	-207.6	468.9	387,645.49	767,292.85	32° 3' 49.026 N	103° 36' 14.118 W	
12,373.0	86.80	176.30	11,858.3	-328.1	478.2	387,525.05	767,302.22	32° 3' 47.833 N	103° 36' 14.018 W	
12,467.0	90.20	178.50	11,860.8	-421.9	482.5	387,431.20	767,306.48	32° 3' 46.904 N	103° 36' 13.976 W	
12,561.0	87.40	177.60	11,862.8	-515.8	485.7	387,337.28	767,309.68	32° 3' 45.975 N	103° 36' 13.946 W	
12,655.0	89.20	177.60	11,865.5	-609.7	489.6	387,243.41	767,313.61	32° 3' 45.046 N	103° 36' 13.908 W	
12,749.0	90.60	179.50	11,865.7	-703.7	492.0	387,149.45	767,315.99	32° 3' 44.116 N	103° 36' 13.888 W	
12,843.0	88.90	179.30	11,866.1	-797.6	493.0	387,055.46	767,316.98	32° 3' 43.185 N	103° 36' 13.884 W	
12,938.0	89.60	180.30	11,867.4	-892.6	493.3	386,960.47	767,317.31	32° 3' 42.245 N	103° 36' 13.887 W	
13,032.0	88.20	180.00	11,869.2	-986.6	493.1	386,866.49	767,317.06	32° 3' 41.315 N	103° 36' 13.898 W	
13,127.0	90.90	180.10	11,869.9	-1,081.6	493.0	386,771.50	767,316.98	32° 3' 40.376 N	103° 36' 13.906 W	
13,221.0	89.60	180.20	11,869.5	-1,175.6	492.7	386,677.50	767,316.73	32° 3' 39.445 N	103° 36' 13.916 W	
13,315.0	89.10	179.80	11,870.6	-1,269.6	492.7	386,583.51	767,316.73	32° 3' 38.515 N	103° 36' 13.924 W	
13,409.0	89.40	179.10	11,871.8	-1,363.6	493.6	386,489.52	767,317.63	32° 3' 37.585 N	103° 36' 13.921 W	
13,504.0	89.30	177.00	11,872.9	-1,458.5	496.9	386,394.59	767,320.87	32° 3' 36.646 N	103° 36' 13.890 W	
13,598.0	89.30	178.80	11,874.0	-1,552.4	500.3	386,300.66	767,324.31	32° 3' 35.716 N	103° 36' 13.858 W	
13,692.0	89.20	178.10	11,875.3	-1,646.4	502.9	386,206.70	767,326.85	32° 3' 34.786 N	103° 36' 13.836 W	
13,786.0	89.00	179.60	11,876.7	-1,740.4	504.7	386,112.74	767,328.74	32° 3' 33.856 N	103° 36' 13.821 W	
13,880.0	89.30	181.50	11,878.1	-1,834.3	503.8	386,018.76	767,327.84	32° 3' 32.926 N	103° 36' 13.839 W	
13,975.0	88.10	181.30	11,880.3	-1,929.3	501.5	385,923.81	767,325.52	32° 3' 31.987 N	103° 36' 13.873 W	
14,069.0	89.20	181.90	11,882.5	-2,023.2	498.9	385,829.88	767,322.89	32° 3' 31.057 N	103° 36' 13.911 W	
14,164.0	88.60	182.10	11,884.3	-2,118.1	495.6	385,734.95	767,319.58	32° 3' 30.118 N	103° 36' 13.957 W	
14,258.0	89.00	182.70	11,886.3	-2,212.0	491.6	385,641.06	767,315.64	32° 3' 29.189 N	103° 36' 14.010 W	
14,352.0	88.30	182.50	11,888.5	-2,305.9	487.4	385,547.18	767,311.38	32° 3' 28.261 N	103° 36' 14.067 W	
14,447.0	88.00	182.80	11,891.6	-2,400.8	483.0	385,452.33	767,306.99	32° 3' 27.322 N	103° 36' 14.126 W	
14,542.0	88.80	183.30	11,894.2	-2,495.6	477.9	385,357.50	767,301.94	32° 3' 26.384 N	103° 36' 14.192 W	
14,636.0	88.60	180.60	11,896.4	-2,589.5	474.7	385,263.59	767,298.74	32° 3' 25.455 N	103° 36' 14.236 W	
14,731.0	88.50	179.60	11,898.8	-2,684.5	474.6	385,168.62	767,298.57	32° 3' 24.515 N	103° 36' 14.246 W	
14,825.0	88.40	178.50	11,901.3	-2,778.4	476.1	385,074.67	767,300.13	32° 3' 23.586 N	103° 36' 14.235 W	
14,920.0	89.40	178.40	11,903.1	-2,873.4	478.7	384,979.72	767,302.70	32° 3' 22.646 N	103° 36' 14.213 W	
15,014.0	87.90	178.20	11,905.3	-2,967.3	481.5	384,885.79	767,305.49	32° 3' 21.716 N	103° 36' 14.188 W	
15,109.0	88.80	178.60	11,908.1	-3,062.2	484.1	384,790.87	767,308.14	32° 3' 20.777 N	103° 36' 14.164 W	
15,204.0	89.20	179.10	11,909.7	-3,157.2	486.0	384,695.91	767,310.05	32° 3' 19.837 N	103° 36' 14.150 W	
15,299.0	89.20	179.20	11,911.1	-3,252.2	487.5	384,600.93	767,311.45	32° 3' 18.897 N	103° 36' 14.141 W	
15,393.0	89.50	178.50	11,912.1	-3,346.1	489.3	384,506.95	767,313.34	32° 3' 17.967 N	103° 36' 14.126 W	
15,488.0	88.60	178.70	11,913.7	-3,441.1	491.7	384,411.99	767,315.66	32° 3' 17.027 N	103° 36' 14.107 W	
15,582.0	88.40	178.60	11,916.2	-3,535.0	493.9	384,318.05	767,317.88	32° 3' 16.097 N	103° 36' 14.088 W	
15,676.0	88.20	180.00	11,919.0	-3,629.0	495.0	384,224.10	767,319.02	32° 3' 15.168 N	103° 36' 14.082 W	
15,771.0	87.20	180.40	11,922.8	-3,723.9	494.7	384,129.18	767,318.69	32° 3' 14.228 N	103° 36' 14.094 W	
15,865.0	88.70	179.50	11,926.1	-3,817.9	494.8	384,035.25	767,318.77	32° 3' 13.299 N	103° 36' 14.100 W	
15,959.0	85.70	180.80	11,930.7	-3,911.7	494.5	383,941.37	767,318.53	32° 3' 12.370 N	103° 36' 14.110 W	
16,054.0	90.40	180.90	11,933.9	-4,006.6	493.1	383,846.46	767,317.12	32° 3' 11.431 N	103° 36' 14.134 W	
16,148.0	86.20	179.60	11,936.7	-4,100.6	492.7	383,752.53	767,316.71	32° 3' 10.501 N	103° 36' 14.146 W	



Survey Report - Geographic



Company:	BTA Oil Producers, LLC	Local Co-ordinate Reference:	Well Mesa B 8115 Fed Com #14H
Project:	Lea County, NM (NAD 83)	TVD Reference:	WELL @ 3327.0usft (Patterson #566)
Site:	Sec 7, T26-S, R33-E	MD Reference:	WELL @ 3327.0usft (Patterson #566)
Well:	Mesa B 8115 Fed Com #14H	North Reference:	Grid
Wellbore:	Wellbore #1	Survey Calculation Method:	Minimum Curvature
Design:	Wellbore #1	Database:	EDM 5000.1 Single User Db

Measured Depth (usft)	Inclination (°)	Azimuth (°)	Vertical Depth (usft)	+N/-S (usft)	+E/-W (usft)	Map Northing (usft)	Map Easting (usft)	Latitude	Longitude
16,242.0	89.70	179.80	11,940.1	-4,194.5	493.2	383,658.60	767,317.20	32° 3' 9.572 N	103° 36' 14.148 W
16,337.0	87.20	179.30	11,942.7	-4,289.4	494.0	383,563.65	767,317.95	32° 3' 8.632 N	103° 36' 14.147 W
16,432.0	88.30	178.70	11,946.4	-4,384.4	495.6	383,468.74	767,319.61	32° 3' 7.693 N	103° 36' 14.135 W
16,526.0	88.00	177.70	11,949.4	-4,478.3	498.6	383,374.84	767,322.56	32° 3' 6.763 N	103° 36' 14.108 W
16,621.0	88.20	179.00	11,952.6	-4,573.2	501.3	383,279.93	767,325.29	32° 3' 5.824 N	103° 36' 14.084 W
16,715.0	89.20	180.50	11,954.7	-4,667.1	501.7	383,185.96	767,325.70	32° 3' 4.894 N	103° 36' 14.086 W
16,822.6	87.81	180.20	11,957.5	-4,774.7	501.0	383,078.40	767,325.04	32° 3' 3.830 N	103° 36' 14.102 W
100' HL Crossed @ 16822.6'MD / 11957.5' TVD									
16,823.0	87.80	180.20	11,957.5	-4,775.1	501.0	383,078.00	767,325.04	32° 3' 3.826 N	103° 36' 14.102 W
16,883.0	87.80	180.20	11,959.8	-4,835.1	500.8	383,018.05	767,324.83	32° 3' 3.233 N	103° 36' 14.110 W
TD @ 16883.0' MD / 11959.8' TVD									

Measured Depth (usft)	Vertical Depth (usft)	Local Coordinates		Comment
		+N/-S (usft)	+E/-W (usft)	
122.0	122.0	0.5	-0.1	First MWD Survey @ 122.0' MD / 122.0' TVD
6,059.6	6,041.6	302.1	292.4	100' HL Crossed @ 6059.6'MD / 6041.6' TVD
11,680.1	11,638.0	302.9	400.7	100' HL Crossed @ 11680.1'MD / 11638.0' TVD
16,822.6	11,957.5	-4,774.7	501.0	100' HL Crossed @ 16822.6'MD / 11957.5' TVD
16,883.0	11,959.8	-4,835.1	500.8	TD @ 16883.0' MD / 11959.8' TVD

Checked By: _____ Approved By: _____ Date: _____

C-105 Submit Electronically Via OCD Permitting	State of New Mexico Energy, Minerals & Natural Resources Department OIL CONSERVATION DIVISION	Revised July 9, 2024
---	--	----------------------

WELL COMPLETION OR RECOMPLETION REPORT AND LOG

Section 1 - Operator and Well Information

Submittal Type: <input checked="" type="checkbox"/> New Well <input type="checkbox"/> Workover <input type="checkbox"/> Deepening <input type="checkbox"/> Plugback <input type="checkbox"/> Different Reservoir <input type="checkbox"/> C-144 Closure Attachment <input type="checkbox"/> Other	
Operator Name: BTA OIL PRODUCERS, LLC	OGRID: 260297
Property Name and Well Number:	Property Code: 326144
Mineral Owner: <input type="checkbox"/> State <input type="checkbox"/> Fee <input type="checkbox"/> Tribal <input type="checkbox"/> Federal	API Number: 30-025-46739
Pool Name: WC-025 G-08 S253235G	Pool Code: 97903

Section 2 – Well Location

	Ul or lot no.	Section	Township	Range	Lot Id	Feet from	N/S Line	Feet from	E/W Line	County
SHL:	A	7	26S	33E		400	N	800	E	LEA
BHL	P	7	26S	33E		40.5	S	335.4	E	LEA

Section 3 – Completion Information

Date T.D. Reached 2/7/2022	Total Measured Depth of Well 16870	Acid Volume (bbls)	<input checked="" type="checkbox"/> Directional Survey Submitted <input type="checkbox"/> Deviation Survey Submitted
Date Rig Released 2/8/2022	Plug-Back Measured Depth 16868	Completion Fluid Used (bbls) 223419	Were Logs Ran (Y/N) Y
Completion Date 5/11/2022	Perforations (MD and TVD) 12000 – 16820MD / 11795-11957TVD	Completion Proppant Used (lbs) 11.24MM	List Type of Logs Ran if applicable: MWD

Section 4 – Action IDs for Submissions and Order Numbers

Surface Casing Action ID: 400085	UIC Permit/Order (UIC wells only) <input type="checkbox"/> Yes <input type="checkbox"/> No, Order No.
Intermediate 1 Casing Action ID: 400085	NOI Recomplete Action ID (if applicable):
Intermediate 2 Casing Action ID: 400085	NOI Plugback Action ID (if applicable):
Production Casing Action ID: 40085	Cement Squeeze Action ID (if applicable):
Tubing Action ID:	All casing was pressure tested in accordance with NMAC <input checked="" type="checkbox"/> Yes <input type="checkbox"/> No
Liner 1 Action ID:	Casing was installed prior to Action ID system (Y/N): Y

Section 5 – Test Data

Date First Production 5/11/2022	Production Method FLOW	Well Status PRODUCTING	Gas – Oil Ratio
Date of Test 5/19/2022	Choke Size 38/64	Flowing Tubing Pressure 1200	Casing Pressure
24 hr Oil (bbls) 498	24 hr Gas (MCF) 1017	24 hr Water (bbls) 5000	Oil Gravity – API 48
Disposition of Gas: SOLD			

Section 6 – Pits

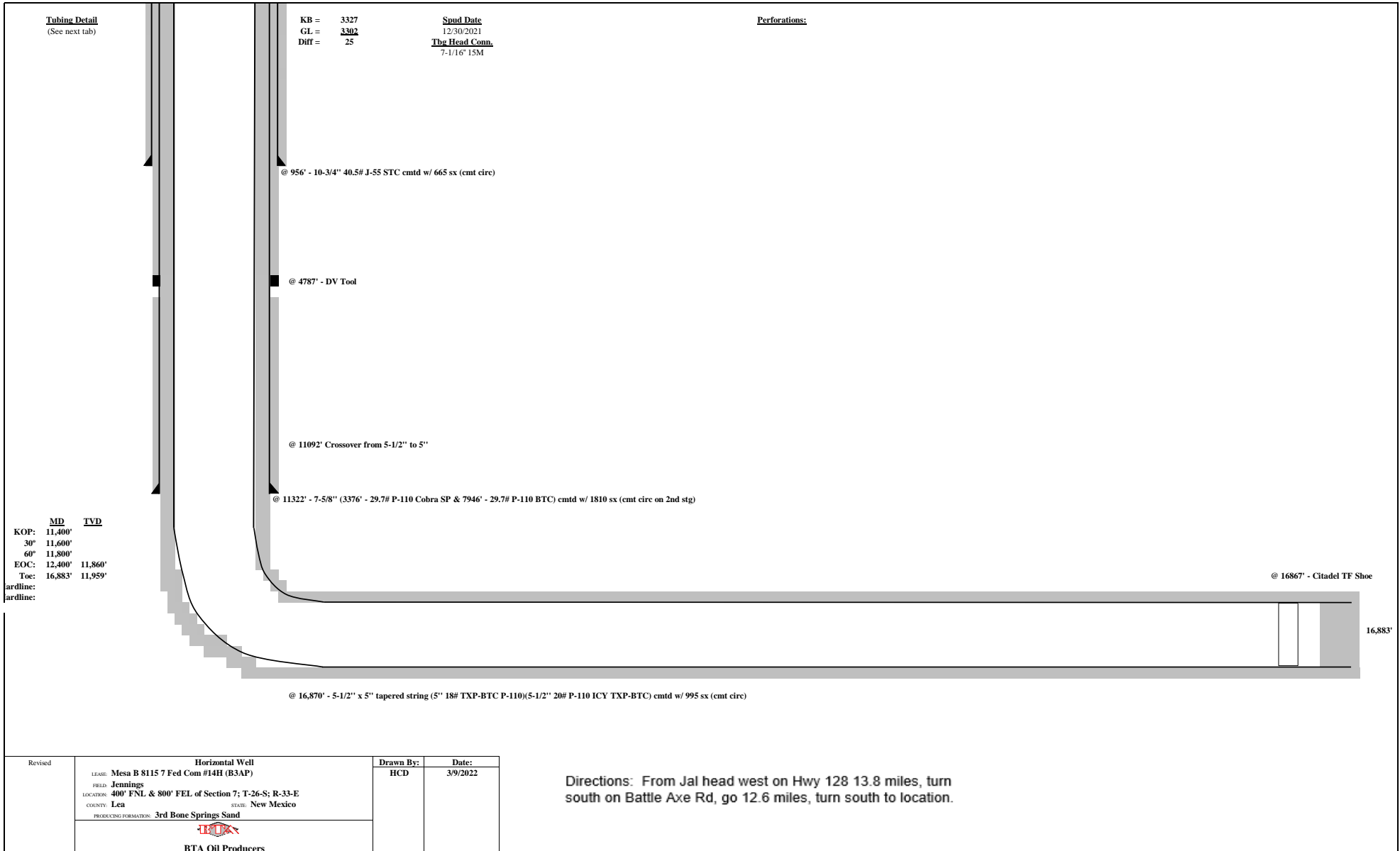
A temporary pit was used at the well. If so, attach a plat with the location of the temporary pit.
 A Closed Loop System was used.
 If an on-site burial was used at the well, report the exact location of the on-site burial:
 LAT: _____ LONG: _____

Section 7 - Operator Signature and Certification

I hereby certify that the required Water Use Report has been, or will be, submitted for this well's completion.
 I hereby certify that the required Fracfocus disclosure has been, or will be, submitted for this well's completion.
 I hereby certify that the rules of the Oil Conservation Division have been complied with and that the information given above is true and complete to the best of my knowledge and belief.

Name KATY REDDELL	
Title REGULATORY ANALYST	Date 3/13/2025

South Formations				North Formations			
Formation/Zone	MD	TVD	W/O/G	Formation/Zone	MD	TVD	W/O/G
T. Anhy				T. San Jose			
T. Salt	1239	1233		T. Nacimiento			
B. Salt	4592	4561		T. Ojo Alamo			
T. Yates				T. Kirtland			
T. 7 Rivers				T. Fruitland			
T. Queen				T. Pictured Cliffs			
T. Grayburg				T. Lewis Shale			
T. San Andres				T. Chacra			
T. Glorieta				T. Cliff House			
T. Yeso				T. Menefee			
T. Paddock				T. Point Lookout			
T. Blinebry				T. Mancos			
T. Tubb				T. Gallup			
T. Drinkard				T. Greenhorn			
T. Abo				T. Graneros			
T. Wolfcamp				T. Dakota			
T. Penn				T. Morrison			
T. Cisco				T. Bluff			
T. Canyon	4965	4987		T. Todilto			
T. Strawn				T. Entrada			
T. Atoka				T. Wingate			
T. Morrow				T. Chinle			
T. Barnett Shale				T. Permian			
T. Miss				T. Penn A"			
T. Woodford Shale				T. Penn. "B"			
T. Devonian				T. Penn. "C"			
T. Silurian				T. Penn. "D"			
T. Fusselman				T. Leadville			
T. Montoya				T. Madison			
T. Simpson				T. Elbert			
T. McKee				T. McCracken			
T. Waddell				T. Ignacio Otzte			
T. Connel				T. Granite			
T. Ellenburger				T. Hermosa			
T. Gr. Wash				T. De Chelly			
T. Delaware Sand	4778	4801		T. Pinkerton			
T. Lamar Lime							
T. Bell Canyon							
T. Cherry Canyon							
T. Brushy Canyon							
T. Bone Springs	8969	8970					
T. 1st BS Sand							
T. 2nd BS Carbonate							
T. 2nd BS Sand							
T. 3rd BS Carbonate							
T. 3rd BS Sand							



U.S. Department of the Interior
BUREAU OF LAND MANAGEMENT

Well Name: MESA B 8115 FED COM	Well Location: T26S / R33E / SEC 7 / NENE / 32.064198 / -103.605431	County or Parish/State: LEA / NM
Well Number: 14H	Type of Well: OIL WELL	Allottee or Tribe Name:
Lease Number: NMNM0160973	Unit or CA Name: MESA B 8105 JV-P COM	Unit or CA Number: NMNM82045
US Well Number: 3002546739	Well Status: Approved Application for Permit to Drill	Operator: BTA OIL PRODUCERS LLC

Subsequent Report

Sundry ID: 2672572

Type of Submission: Subsequent Report

Type of Action: Hydraulic Fracturing

Date Sundry Submitted: 05/19/2022

Time Sundry Submitted: 12:49

Date Operation Actually Began: 03/16/2022

Actual Procedure: TD OF 16,883' REACHED: 02/07/2022 13/16/2022 - 04/15/2022: PERFORATE AND FRAC Bone Spring. Completed Interval: 12,000' - 16,820'. Frac Totals: 223,419 bbls slickwater, 11.24 MM #s of 100 mesh native sand. 05/11/2022: START FLOWING BACK AND TESTING.

Well Name: MESA B 8115 FED COM

Well Location: T26S / R33E / SEC 7 / NENE / 32.064198 / -103.605431

County or Parish/State: LEA / NM

Well Number: 14H

Type of Well: OIL WELL

Allottee or Tribe Name:

Lease Number: NMNM0160973

Unit or CA Name: MESA B 8105 JV-P COM

Unit or CA Number: NMNM82045

US Well Number: 3002546739

Well Status: Approved Application for Permit to Drill

Operator: BTA OIL PRODUCERS LLC

Operator

I certify that the foregoing is true and correct. Title 18 U.S.C. Section 1001 and Title 43 U.S.C. Section 1212, make it a crime for any person knowingly and willfully to make to any department or agency of the United States any false, fictitious or fraudulent statements or representations as to any matter within its jurisdiction. Electronic submission of Sundry Notices through this system satisfies regulations requiring a

Operator Electronic Signature: KATY REDDELL

Signed on: MAY 19, 2022 12:49 PM

Name: BTA OIL PRODUCERS LLC

Title: Regulatory Analyst

Street Address: 104 S Pecos

City: Midland

State: TX

Phone: (432) 682-3753

Email address: Kredell@btaoil.com

Field

Representative Name:

Street Address:

City:

State:

Zip:

Phone:

Email address:

Sante Fe Main Office
Phone: (505) 476-3441

General Information
Phone: (505) 629-6116

Online Phone Directory
<https://www.emnrd.nm.gov/ocd/contact-us>

State of New Mexico
Energy, Minerals and Natural Resources
Oil Conservation Division
1220 S. St Francis Dr.
Santa Fe, NM 87505

ACKNOWLEDGMENTS

Action 442163

ACKNOWLEDGMENTS

Operator: BTA OIL PRODUCERS, LLC 104 S Pecos Midland, TX 79701	OGRID: 260297
	Action Number: 442163
	Action Type: [C-104] Completion Packet - New Well (C-104NW)

ACKNOWLEDGMENTS

<input checked="" type="checkbox"/>	I hereby certify that the required Water Use Report has been, or will be, submitted for this wells completion.
<input checked="" type="checkbox"/>	I hereby certify that the required FracFocus disclosure has been, or will be, submitted for this wells completion.
<input checked="" type="checkbox"/>	I hereby certify that the rules of the Oil Conservation Division have been complied with and that the information given above is true and complete to the best of my knowledge and belief.

Sante Fe Main Office
Phone: (505) 476-3441

General Information
Phone: (505) 629-6116

Online Phone Directory
<https://www.emnrd.nm.gov/ocd/contact-us>

State of New Mexico
Energy, Minerals and Natural Resources
Oil Conservation Division
1220 S. St Francis Dr.
Santa Fe, NM 87505

CONDITIONS

Action 442163

CONDITIONS

Operator: BTA OIL PRODUCERS, LLC 104 S Pecos Midland, TX 79701	OGRID: 260297
	Action Number: 442163
	Action Type: [C-104] Completion Packet - New Well (C-104NW)

CONDITIONS

Created By	Condition	Condition Date
plmartinez	File 3160-4 Completion Report and 3160-5 Completion Sundry within 10 days of BLM approval.	2/6/2026