

Submit 1 Copy To Appropriate District Office
District I - (575) 393-6161
District II - (575) 748-1283
District III - (505) 334-6178
District IV - (505) 476-3460

State of New Mexico
Energy, Minerals and Natural Resources

Form C-103
Revised July 18, 2013

OIL CONSERVATION DIVISION
1220 South St. Francis Dr.
Santa Fe, NM 87505

WELL API NO. 30-025-20419
5. Indicate Type of Lease STATE [X] FEE []
6. State Oil & Gas Lease No. EB06989-0002
7. Lease Name or Unit Agreement Name State #0001
8. Well Number 001
9. OGRID Number 14096
10. Pool name or Wildcat High Plains: Permo Upper Penn

SUNDRY NOTICES AND REPORTS ON WELLS
(DO NOT USE THIS FORM FOR PROPOSALS TO DRILL OR TO DEEPEN OR PLUG BACK TO A DIFFERENT RESERVOIR. USE "APPLICATION FOR PERMIT" (FORM C-101) FOR SUCH PROPOSALS.)
1. Type of Well: Oil Well [X] Gas Well [] Other []
2. Name of Operator Mark L Shidler Inc
3. Address of Operator 1313 Campbell Road Ste D Houston Texas 77055
4. Well Location Unit Letter M : 660' feet from the SOUTH line and 660' feet from the WEST line
Section 23 Township 14s Range 34E NMPM County LEA
11. Elevation (Show whether DR, RKB, RT, GR, etc.) 12'

12. Check Appropriate Box to Indicate Nature of Notice, Report or Other Data

NOTICE OF INTENTION TO:
PERFORM REMEDIAL WORK [] PLUG AND ABANDON []
TEMPORARILY ABANDON [] CHANGE PLANS []
PULL OR ALTER CASING [] MULTIPLE COMPL []
DOWNHOLE COMMINGLE []
CLOSED-LOOP SYSTEM []
OTHER: []
SUBSEQUENT REPORT OF:
REMEDIAL WORK [] ALTERING CASING []
COMMENCE DRILLING OPNS. [] P AND A [X]
CASING/CEMENT JOB []
OTHER: []

13. Describe proposed or completed operations. (Clearly state all pertinent details, and give pertinent dates, including estimated date of starting any proposed work). SEE RULE 19.15.7.14 NMAC. For Multiple Completions: Attach wellbore diagram of proposed completion or recompletion.

SEE ATTACHED PDF UPLOAD OF PLUGGING PROCEDURE & FINAL INPLACE WBD

Spud Date: [] Rig Release Date: 9/28/2025

I hereby certify that the information above is true and complete to the best of my knowledge and belief.

SIGNATURE [Signature] TITLE VP DATE 10/29/2025
Type or print name Andrew Shidler E-mail address: ashidler@marklshidlerinc.com PHONE: 713-481-6484
For State Use Only

APPROVED BY: [] TITLE [] DATE []
Conditions of Approval (if any):

MARK L SHIDLER, Inc. Downhole Schematic

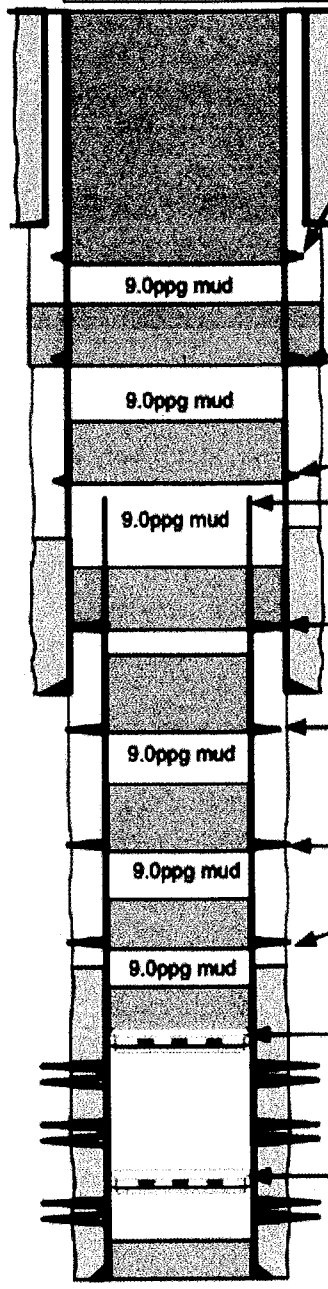
WELL NAME: State #23-1	FIELD: High Plains (Baugh A & C)	API: 30-025-20419
LOCATION: 660' FSL & 660' FWL of Sec 23, T14S, R34E, Lea County, NM		
WP ID#	DATE: 07 OCT 25	SPUD: 28 FEB 1963

Prepared by: N. P. Mares

FINAL WELLBORE

GL Elev: 4095'
KB Elev: 4107'
DF Elev: 4106'

NOTE: All depths are RKB otherwise noted RKB: 12'



Perf @ 378'-379' @ 4spf No surface csg valve. Rec'd permission from State of NM, Robert Trucillo to spot balanced cmt plug from 379' to surface. Spot/balanced cmt plug w/ 90sxs 14.8ppg Class C cmt from 379' to surface.

TOC @ 475' calculated
13-3/8" 48# H-40 ST&C csg @ 329' w/ 17" hole, cmt'd w/ 350sxs reg cmt circ to surface

Perf @ 2399'-2400' @ 4spf cmt sqz/spot 173sxs 14.8ppg Class C cmt w/ sqz 62sxs outside 8-5/8" csg & spot balanced plug inside 8-5/8" csg w/ 111sxs from 2400'-2000'. WOC & tag w/ tbg @ 2018'

Sqz perms @ 3099-3100 @ 4spf, unable to cmt sqz. Spot bal cmt plug 90sxs Class C cmt 14.8ppg from 3197' to 2800'. Bubble test confirmed good. WOC. Tagged w/ tbg @ 2830'

Cut 5-1/2" csg @ 3150'
TOC @ 3800' determined by temperature survey

Sqz perms @ 3901'-3905' @ 4spf; unable to cmt sqz. Spot bal cmt plug 26sxs Class C cmt 14.8ppg from 3946' to 3706'. Bubble test confirmed good. WOC. Tagged w/ e-line @ 3670'

8-5/8" 32# J-55 ST&C csg @ 4550' w/ 11" hole, cmt'd w/ 200sxs Poz & 100sxs Neat cmt
Sqz perms @ 4621'-4625' @ 4spf; unable to cmt sqz. Spot bal cmt plug 26sxs Class C cmt 14.8ppg from 4665' to 4425'. Bubble test confirmed good. WOC. Tagged w/ tbg @ 4365'

Sqz perms @ 6396'-6400' @ 4spf; unable to cmt sqz. Spot bal cmt plug 26sxs Class C cmt 14.8ppg from 6452' to 6212'. Bubble test confirmed good. WOC. Tagged w/ tbg @ 6166'

Sqz perms @ 7376'-7380' @ 4spf; unable to cmt sqz. Spot bal cmt plug 26sxs Class C cmt 14.8ppg from 7450' to 7210'. Bubble test confirmed good. WOC. Tagged w/ tbg @ 7185'
TOC @ 8400' Determined by Temperature Survey

CIBP set @ 8650' & spot 25sxs of Class H cmt 16.4ppg on top w/ TOC @ 9450'. WOC. Tagged w/ tbg @ 9445'.
perfs: 9662'-9674'

perfs: 10344'-10412'

CIBP set @ 10450' 12/1973

perfs: 10483'-10498'
OPBTD @ 10498'

5-1/2" 17# & 20# LT&C csg @ 10543' w/ 7-7/8" hole, cmt'd w/ 400sxs 50/50 Incorr/Poz

TD @ 10543'

Plugging Report - MARK L SHIDLER 23-1 (STATE #001)

9/11/2025

TOOK FORKLIFT FROM KERMIT YARD TO LOCATION MOVED HORSE AND JTS THAT WERE IN THE WAY R/D FLOWLINE AND MOVED OUT OF WAY WENT TO GET BASE BEAM SPOT ON LOCATION

9/12/2025

LOADED 14 BAGS OF CEMENT ON TRAILER TOOK TO LOCATION UNLOADED ALL 14 BAGS ON LOCATION WENT TO GET RIG PUMP AND BROUGHT TO LOCATION WENT TO KERMIT YARD HOOKED 90 BBL TANK AND TOOK TO LOCATION WENT TO KERMIT YARD FOR RIG AND TOOK TO HOBBS YARD WILL TAKE TO LOCATION IN THE MORNING. FILL CWS TEST TRUCK WITH FRESH WATER GOT IT READY TO MOVE IN THE MORNING TO LOCATION.

9/13/25

MOVED RIG FROM HOBBS YARD TO LOCATION SPOT AND R/U RIG L/D POLISH ROD WITH STUFFING BOX DID NOT SEE PUMP UNSEAT POOH WITH 87 1" RODS 164 7/8" RODS 147 3/4" RODS 16 7/8" RODS L/D ALL RODS NO PUMP BOX ON LAST ROD LOOKED GOOD. MOVED ALL RODS OUT OF THE WAY SHUT WELL IN SDFTN

9/15/25

CHECKED PRESSURE 0 PSI TBG/CSG OPEN WELL R/D ALL ROD EQUIPMENT R/U ALL TBG EQUIPMENT R/D 7-1/16" 3M FLANGE R/U BOPS FLOOR TONGS TRY TO RELEASE T/A HAD TO WORK IT FOR ABOUT 30 MINUTES TILL WE GOT IT RELEASED. R/U CWS TEST TRUCK CAME OUT THE HOLE TESTING TBG TO 5000 PSI PULLED 12 STANDS AND TBG WAS FULL R/U SWAB LINE SWAB TO 1500' CONTINUE POOH GOT 20 STANDS OUT TESTED. STARTED PULLING TBG WITHOUT TESTING WELL KEPT FLOWING BACK HAD VACUUM TRUCK PICKING UP FLOW BACK WATER POOH STANDING BACK 304 JTS SWI SDFTN

9/16/25

CHECKED PRESSURE 0 PSI TBG/CSG OPEN WELL L/D 1 JT T/A 26 JTS CROSSOVER WITH S/N 1 4' PERF PUP R/U E- LINE RIH WITH GAUGE RING TAGGED 7950' WOULD NOT GO PASS THAT POOH R/D E- LINE STAND BY FOR SCRAPER AND BID TO GO CLEAN OUT WELL. R/U BID OD 4-5/8" WITH SCRAPER AND CROSSOVER RIH TESTING TBG TO 5000 PSI RAN TOTAL OF 251 JTS 7900' R/U PUMP PUMPED DOWN THE BACK SIDE CIRCULARE WELL FOR 45-50 MINUTES TILL WE GOT CLEAN WATER BACK SHUT PUMP DOWN SWI SDFTN

9/17/25

CHECKED PRESSURE 0 PSI TBG/CSG OPEN WELL R/U PUMP CIRCULATE WELL FOR 30 MINUTES HAD CLEAN WATER RIH WITH 3 JTS TAGGED AT 7950' R/U PUMP CIRCULATE WELL WHILE WORKING SCRAPER AND BID WOULD 2K GOING DOWN WOULD GAIN 2K GOING UP WE STARTED GETTING FORMATION MATERIAL R/D PUMP POOH WITH 300' OF TBG CIRCULATE WELL CLEAN POOH WITH ALL TBG L/D CROSSOVER SCRAPER AND BIT R/D CWS TEST TRUCK RIH WITH MULE SHOE AND TBG TO 8300' DID NOT TAG ANYTHING CIRCULATE WELL CLEAN COUNTINUE TO RIH TO 9655' RKB CIRCULATE WELL CLEAN POOH PASS TIGHT SPOT TO 7800' SWI SDFTN

9/18/25

CHECKED PRESSURE 0 PSI TBG/CSG OPEN WELL COUNTINUE TO POOH WITH ALL TBG L/D MULE SHOE R/U E-LINE RIH WITH GAGE RING TO 9650' POOH R/U CIBP RIH SET AT 9650' FILL CSG PRESSURE TEST TO 500 PSI SWI SDFTN

9/20/25

CHECKED PRESSURE 0 PSI TBG/CSG OPEN WELL RIH WITH TBG TO 9648' R/U PUMP BREAK CIRCULATION MIX 25 SXS OF CEMENT WITH DISPLACEMENT R/D PUMP POOH L/D 6 JTS STAND BACK 24 STANDS R/U PUMP REVERSE OUT SWI CLEANED CEMENT UNIT AND PUMP CHANGED 2 VALVES ON CEMENT UNIT. HAD VACUUM TRUCK BRING 100 BBLs OF FRESH WATER THEN CLEAN OUT CEMENT UNITS BACK TANK

9/21/25

CHECKED PRESSURE 0 PSI TBG/CSG OPEN WELL RIH WITH TBG TAGGED CEMENT AT 9445' L/D 1 JT R/U PUMP SPOT EMPTY VACUUM TRUCKS STANBY FOR MUD. STARTED DIGGING AROUND WELL TO CSG FLANGE AND SURFACE VALVE. SPOT VACUUM TRUCKS WITH MUD START PUMPING DOWN THE TBG CATCHING RETURNS STRAIGHT INTO EMPTY VACUUM TRUCKS CIRCULATE MUD ALL THE WAY AROUND. R/D PUMP POOH WITH 68 JTS TO PUT EOT AT 7325.55' R/U E-LINE RIH WITH 4' PERF GUN PERF FROM 7376' TO 7380' POOH L/D PERF GUN R/D E-LINE P/U 2 JTS TO PUT EOT AT 7382' R/U PUMP TRY TO GET INJECTION RATE PRESSURE UP TO 500 PSI COULD NOT GET INJECTION RATE BLEAD PRESSURE OFF RIH WITH TBG TO LEAVE EOT AT 7450' MIX 26 SXS OF CEMENT SPOT AND SET BALANCED PLUG R/D PUMP POOH WITH TBG TO 7014' R/U PUMP REVERSE OUT R/U HOSE TO TBG AND THE OTHER END TO A BUCKET OF WATER TO PERFORM BUCKET TEST FOR 30 MINUTES TEST WAS GOOD NO BUBBLES NO FLOW SWI. CLEANED CEMENT UNIT SDFTN

9/22/25

CHECKED PRESSURE 0 PSI TBG/CSG OPEN WELL RIH WITH TBG TAGGED CEMENT AT 7185' POOH TO 6140' R/U E-LINE RIH WITH 4' PERF GUN PERF AT 6396'-6400' POOH L/D PERF GUN R/D E-LINE RIH WITH TBG TO 6390' R/U PUMP TRY TO GET INJECTION RATE PRESSURE UP TO 500 PSI COULD NOT GET INJECTION RATE R/D PUMP RIH WITH TBG TO 6452' R/U PUMP MIX AND SPOT 26 SXS OF CEMENT R/D PUMP POOH TO 5955' R/U PUMP REVERSE OUT R/D PUMP R/U HOSE ON TBG AND THE OTHER END ON A BUCKET WITH WATER TO PERFORM BUBBLE TEST FOR 30 MINUTES TEST WAS GOOD NO BUBBLES NO FLOW SWI. CLEANED CEMENT UNIT AND PUMP MOVED ALL OLD TBG OUT OF THE WAY. OPEN WELL RIH TO TAG CEMENT TAGGED AT 6166' POOH L/D TBG EOT WAS AT 4573' R/U E-LINE RIH WITH 4' PERF GUN PERF AT 4621' - 4625' POOH L/D PERF GUN R/D E-LINE RIH WITH TBG 4635' R/U PUMP TRY TO GET INJECTION RATE PRESSURE UP TO 500 PSI COULD NOT GET INJECTION RATE BLEAD PRESSURE OFF RIH TO 4665' R/U PUMP MIX AND SPOT 26 SXS OF CEMENT R/D PUMP POOH TO 4010' R/U PUMP REVERSE OUT R/D PUMP R/U HOSE TO TBG AND THE OTHER END TO A BUCKET WITH WATER TO PERFORM BUBBLE TEST FOR 30 MINUTES TEST WAS GOOD NO BUBBLES NO FLOW SWI. CLEANED CEMENT UNIT AND PUMP SDFTN

9/23/25

CHECKED PRESSURE 0 PSI TBG/CSG OPEN WELL RIH WITH TBG TAGGED CEMENT AT 4365' POOH WITH TBG TO 3820' R/U E-LINE RIH WITH 4' PERF GUN PERF AT 3901'-3905' L/D PERF GUN R/D E-LINE RIH WITH TBG TO 3884' R/U PUMP TRY TO GET INJECTION RATE PRESSURE UP TO 500 PSI COULD NOT GET INJECTION RATE BLEAD PRESSURE OFF R/D PUMP RIH WITH TBG TO 3946' R/U PUMP MIX AND SPOT 26 SXS OF CEMENT R/D PUMP POOH WITH TBG TO 3133' R/U PUMP REVERSE OUT R/D PUMP R/U HOSE TO TBG AND PUT OTHER END ON A BUCKET WITH WATER TO PERFORM BUBBLE TEST FOR 30 MINUTES. TEST WAS GOOD NO BUBBLES NO FLOW. POOH STANDING BACK ALL TBG SWI. CLEANED CEMENT UNIT AND PUMP START BREAKING BOLTS ON CSG FLANGE. R/U E-LINE RIH TAG CEMENT AT 3670' POOH RIH WITH JET CUTTER R/U PUMP ON CSG PRESSURE UP TO 500 PSI CUT 5-1/2" CSG LOST THE 500 PSI WHEN THEY CUT CSG. POOH L/D JET CUTTER R/D E-LINE R/U PUMP PUMPED DOWN THE 5-1/2" CSG OUT 8-5/8" CIRCULATE WELL SWI SDFTN

9/24/25

CHECKED PRESSURE 0 PSI ON THE 5-1/2" CSG AND 0 PSI ON THE 8-5/8" OPEN WELL R/D FLOOR BOPS AND FLANGE FOR THE 8-5/8" R/U SPEAR WITH 10' L-80 PUP P/U TO 90M HANGER DID NOT MOVE WORKED IT A COUPLE OF TIMES AND NOTHING R/U TORCH AND WARM UP ALL AROUND FLANGE AND TBG HANGER KEPT WORKING IT BUT HANGER WOULD NOT MOVE. HAD E-LINE WRAP AROUND FLANGE WE PULLED IT TO 100M THEN SHOT IT HANGER MOVED HAD THE 5-1/2" WAS RELEASED PULLED 1 JT L/D DOWN SPEAR AND PUP L/D TOTAL OF 54 5-1/2" JTS MOVED THEM OUT OF THE WAY FILL 5-1/2" R/U FLANGE AND BOPS SWI SDFTN

9/25/25

DESCRIPTION OF WORK: HELD SAFETY MEETING: FOOH W/ 5 1/2" CSG. TOTAL OF 95JTS. R.U. ROTARY WIRE LINE AND RIH PREFORMING BOND LONG FROM 3150-SFC. PU 3 1/8" GUN & RIH PERFORATING 8 5/8" CASING FROM 3100-3099. POOH AND RD WIRE LINE. RIH W/ 98JTS 2 7/8" TBG TO 3,091. ATTEMPT TO ESTABLISH INJECTION RATE. PRESSURE UP TO 800PSI W/ NO INJECTION. CONTACT NMOCD ROBERT TRUILLIO AND GOT APPROVAL TO SET PLUG FROM 3200'-2870'. SWIFN.

9/26/25

HELD SAFETY MEETING: TBG/ CSG 0PSI. R.I.H. TO 3197'. CIRCULATE AND CONDITION MUD. MIX & SPOT 90SXS 14.8# CMT FROM 3197'-2800' +/- . POOH LAYING DOWN TBG TO 2790' AND REVERSE OUT. WOC. HAVE SELECT VACUUM TRUCKS DELIVER 250BBLs OF 9# WBM. CIRCUALTE OUT 8.3# WBM FROM 2790'. RIH TAG TOC AT 2830'. POOH LAYING RACKING 2400' TBG IN DERRICK. RU WIRE LINE & RIH W/ 3 1/8" GUN PERFORATING FROM 2400-2399. POOH & RD WIRE LINE. RIH W/ TBG TO 2395'. ATTEMPT TO ESTABLISH INJECTION RATE. MIX & SPOT 173SXS 14.8# CMT PLUG SQZ 12.5BBLs CMT OUT OF 8 5/8". LEFT TOP OF CEMENT AT 2000 +/- POOH & REVERSE OUT. CLEAN UP CEMENT UNIT. SWIFN

9/27/25

HELD SAFETY MEETING. TBG/CSG SLIGHT VACUUM. RIH TAG TOC AT 2018'. POOH LAYING DOWN ALL TBG. RU WIRE LINE & RIH PERFORATING 8 5/8" CSG AT 379'-378' W/ 3 1/8" GUN. POOH & RD WIRE LINE. DUG AROUND WELL HEAD TO LOCATE SFC CSG VALVE. NO VALVE FOR THE SFC CSG. CONTACT NMOCD ROBERT TRUILLIO AND VERBALLY APPROVED SETTING BALANCE PLUG IN 8 5/8" CSG TO SFC. MIX AND PUMPED 90SXS 14.8# CMT PLUG FROM 379'-0'. WASH DOWN EQUIPMENT AND SWIFN.

9/28/25

HELD SAFETY MEETING: RDWOR & ALL EQUIPMENT. CLEAN ALL EQUIPMENT. HAUL OFF 1LD OF WBM.

10/6/25

DIG AROUND THE WELL AND CUT IT OUT. WELDED PLATE ON THE CASIN. WE WELDED LETTERS ON THE INDICATOR POST AND WELDED ON THE CASIN PLATE. WE PUR CONCRETE AROUND THE INDICATOR POST AND BACK FILL THE WELL.

Plugging Report - MARK L SHIDLER 23-1 (STATE #001)

9/11/2025

TOOK FORKLIFT FROM KERMIT YARD TO LOCATION MOVED HORSE AND JTS THAT WERE IN THE WAY R/D FLOWLINE AND MOVED OUT OF WAY WENT TO GET BASE BEAM SPOT ON LOCATION

9/12/2025

LOADED 14 BAGS OF CEMENT ON TRAILER TOOK TO LOCATION UNLOADED ALL 14 BAGS ON LOCATION WENT TO GET RIG PUMP AND BROUGHT TO LOCATION WENT TO KERMIT YARD HOOKED 90 BBL TANK AND TOOK TO LOCATION WENT TO KERMIT YARD FOR RIG AND TOOK TO HOBBS YARD WILL TAKE TO LOCATION IN THE MORNING. FILL CWS TEST TRUCK WITH FRESH WATER GOT IT READY TO MOVE IN THE MORNING TO LOCATION.

9/13/25

MOVED RIG FROM HOBBS YARD TO LOCATION SPOT AND R/U RIG L/D POLISH ROD WITH STUFFING BOX DID NOT SEE PUMP UNSEAT POOH WITH 87 1" RODS 164 7/8" RODS 147 3/4" RODS 16 7/8" RODS L/D ALL RODS NO PUMP BOX ON LAST ROD LOOKED GOOD. MOVED ALL RODS OUT OF THE WAY SHUT WELL IN SDFTN

9/15/25

CHECKED PRESSURE 0 PSI TBG/CSG OPEN WELL R/D ALL ROD EQUIPMENT R/U ALL TBG EQUIPMENT R/D 7-1/16" 3M FLANGE R/U BOPS FLOOR TONGS TRY TO RELEASE T/A HAD TO WORK IT FOR ABOUT 30 MINUTES TILL WE GOT IT RELEASED. R/U CWS TEST TRUCK CAME OUT THE HOLE TESTING TBG TO 5000 PSI PULLED 12 STANDS AND TBG WAS FULL R/U SWAB LINE SWAB TO 1500' CONTINUE POOH GOT 20 STANDS OUT TESTED. STARTED PULLING TBG WITHOUT TESTING WELL KEPT FLOWING BACK HAD VACUUM TRUCK PICKING UP FLOW BACK WATER POOH STANDING BACK 304 JTS SWI SDFTN

9/16/25

CHECKED PRESSURE 0 PSI TBG/CSG OPEN WELL L/D 1 JT T/A 26 JTS CROSSOVER WITH S/N 1 4' PERF PUP R/U E- LINE RIH WITH GAUGE RING TAGGED 7950' WOULD NOT GO PASS THAT POOH R/D E- LINE STAND BY FOR SCRAPER AND BID TO GO CLEAN OUT WELL. R/U BID OD 4-5/8" WITH SCRAPER AND CROSSOVER RIH TESTING TBG TO 5000 PSI RAN TOTAL OF 251 JTS 7900' R/U PUMP PUMPED DOWN THE BACK SIDE CIRCULARE WELL FOR 45-50 MINUTES TILL WE GOT CLEAN WATER BACK SHUT PUMP DOWN SWI SDFTN

9/17/25

CHECKED PRESSURE 0 PSI TBG/CSG OPEN WELL R/U PUMP CIRCULATE WELL FOR 30 MINUTES HAD CLEAN WATER RIH WITH 3 JTS TAGGED AT 7950' R/U PUMP CIRCULATE WELL WHILE WORKING SCRAPER AND BID WOULD 2K GOING DOWN WOULD GAIN 2K GOING UP WE STARTED GETTING FORMATION MATERIAL R/D PUMP POOH WITH 300' OF TBG CIRCULATE WELL CLEAN POOH WITH ALL TBG L/D CROSSOVER SCRAPER AND BIT R/D CWS TEST TRUCK RIH WITH MULE SHOE AND TBG TO 8300' DID NOT TAG ANYTHING CIRCULATE WELL CLEAN COUNTINUE TO RIH TO 9655' RKB CIRCULATE WELL CLEAN POOH PASS TIGHT SPOT TO 7800' SWI SDFTN

9/18/25

CHECKED PRESSURE 0 PSI TBG/CSG OPEN WELL COUNTINE TO POOH WITH ALL TBG L/D MULE SHOE R/U E-LINE RIH WITH GAGE RING TO 9650' POOH R/U CIBP RIH SET AT 9650' FILL CSG PRESSURE TEST TO 500 PSI SWI SDFTN

9/20/25

CHECKED PRESSURE 0 PSI TBG/CSG OPEN WELL RIH WITH TBG TO 9648' R/U PUMP BREAK CIRCULATION MIX 25 SXS OF CEMENT WITH DISPLACEMENT R/D PUMP POOH L/D 6 JTS STAND BACK 24 STANDS R/U PUMP REVERSE OUT SWI CLEANED CEMENT UNIT AND PUMP CHANGED 2 VALVES ON CEMENT UNIT. HAD VACUUM TRUCK BRING 100 BBLS OF FRESH WATER THEN CLEAN OUT CEMENT UNITS BACK TANK

9/21/25

CHECKED PRESSURE 0 PSI TBG/CSG OPEN WELL RIH WITH TBG TAGGED CEMENT AT 9445' L/D 1 JT R/U PUMP SPOT EMPTY VACUUM TRUCKS STANBY FOR MUD. STARTED DIGGING AROUND WELL TO CSG FLANGE AND SURFACE VALVE. SPOT VACUUM TRUCKS WITH MUD START PUMPING DOWN THE TBG CATCHING RETURNS STRAIGHT INTO EMPTY VACUUM TRUCKS CIRCULATE MUD ALL THE WAY AROUND. R/D PUMP POOH WITH 68 JTS TO PUT EOT AT 7325.55' R/U E-LINE RIH WITH 4' PERF GUN PERF FROM 7376' TO 7380' POOH L/D PERF GUN R/D E-LINE P/U 2 JTS TO PUT EOT AT 7382'R/U PUMP TRY TO GET INJECTION RATE PRESSURE UP TO 500 PSI COULD NOT GET INJECTION RATE BLEAD PRESSURE OFF RIH WITH TBG TO LEAVE EOT AT 7450' MIX 26 SXS OF CEMENT SPOT AND SET BALANCED PLUG R/D PUMP POOH WITH TBG TO 7014' R/U PUMP REVERSE OUT R/U HOSE TO TBG AND THE OTHER END TO A BUCKET OF WATER TO PERFORM BUCKET TEST FOR 30 MINUTES TEST WAS GOOD NO BUBBLES NO FLOW SWI. CLEANED CEMENT UNIT SDFTN

9/22/25

CHECKED PRESSURE 0 PSI TBG/CSG OPEN WELL RIH WITH TBG TAGGED CEMENT AT 7185' POOH TO 6140' R/U E-LINE RIH WITH 4' PERF GUN PERF AT 6396'-6400' POOH L/D PERF GUN R/D E-LINE RIH WITH TBG TO 6390' R/U PUMP TRY TO GET INJECTION RATE PRESSURE UP TO 500 PSI COULD NOT GET INJECTION RATE R/D PUMP RIH WITH TBG TO 6452' R/U PUMP MIX AND SPOT 26 SXS OF CEMENT R/D PUMP POOH TO 5955' R/U PUMP REVERSE OUT R/D PUMP R/U HOSE ON TBG AND THE OTHER END ON A BUCKET WITH WATER TO PERFORM BUBBLE TEST FOR 30 MINUTES TEST WAS GOOD NO BUBBLES NO FLOW SWI. CLEANED CEMENT UNIT AND PUMP MOVED ALL OLD TBG OUT OF THE WAY. OPEN WELL RIH TO TAG CEMENT TAGGED AT 6166' POOH L/D TBG EOT WAS AT 4573' R/U E-LINE RIH WITH 4' PERF GUN PERF AT 4621' - 4625' POOH L/D PERF GUN R/D E-LINE RIH WITH TBG 4635' R/U PUMP TRY TO GET INJECTION RATE PRESSURE UP TO 500 PSI COULD NOT GET INJECTION RATE BLEAD PRESSURE OFF RIH TO 4665' R/U PUMP MIX AND SPOT 26 SXS OF CEMENT R/D PUMP POOH TO 4010' R/U PUMP REVERSE OUT R/D PUMP R/U HOSE TO TBG AND THE OTHER END TO A BUCKET WITH WATER TO PERFORM BUBBLE TEST FOR 30 MINUTES TEST WAS GOOD NO BUBBLES NO FLOW SWI. CLEANED CEMENT UNIT AND PUMP SDFTN

9/23/25

CHECKED PRESSURE 0 PSI TBG/CSG OPEN WELL RIH WITH TBG TAGGED CEMENT AT 4365' POOH WITH TBG TO 3820' R/U E-LINE RIH WITH 4' PERF GUN PERF AT 3901'-3905' L/D PERF GUN R/D E-LINE RIH WITH TBG TO 3884' R/U PUMP TRY TO GET INJECTION RATE PRESSURE UP TO 500 PSI COULD NOT GET INJECTION RATE BLEAD PRESSURE OFF R/D PUMP RIH WITH TBG TO 3946' R/U PUMP MIX AND SPOT 26 SXS OF CEMENT R/D PUMP POOH WITH TBG TO 3133' R/U PUMP REVERSE OUT R/D PUMP R/U HOSE TO TBG AND PUT OTHER END ON A BUCKET WITH WATER TO PERFORM BUBBLE TEST FOR 30 MINUTES. TEST WAS GOOD NO BUBBLES NO FLOW. POOH STANDING BACK ALL TBG SWI. CLEANED CEMENT UNIT AND PUMP START BREAKING BOLTS ON CSG FLANGE. R/U E-LINE RIH TAG CEMENT AT 3670' POOH RIH WITH JET CUTTER R/U PUMP ON CSG PRESSURE UP TO 500 PSI CUT 5-1/2" CSG LOST THE 500 PSI WHEN THEY CUT CSG. POOH L/D JET CUTTER R/D E-LINE R/U PUMP PUMPED DOWN THE 5-1/2" CSG OUT 8-5/8" CIRCULATE WELL SWI SDFTN

9/24/25

CHECKED PRESSURE 0 PSI ON THE 5-1/2" CSG AND 0 PSI ON THE 8-5/8" OPEN WELL R/D FLOOR BOPS AND FLANGE FOR THE 8-5/8" R/U SPEAR WITH 10' L-80 PUP P/U TO 90M HANGER DID NOT MOVE WORKED IT A COUPLE OF TIMES AND NOTHING R/U TORCH AND WARM UP ALL AROUND FLANGE AND TBG HANGER KEPT WORKING IT BUT HANGER WOULD NOT MOVE. HAD E-LINE WRAP AROUND FLANGE WE PULLED IT TO 100M THEN SHOT IT HANGER MOVED HAD THE 5-1/2" WAS RELEASED PULLED 1 JT L/D DOWN SPEAR AND PUP L/D TOTAL OF 54 5-1/2" JTS MOVED THEM OUT OF THE WAY FILL 5-1/2" R/U FLANGE AND BOPS SWI SDFTN

9/25/25

DESCRIPTION OF WORK: HELD SAFETY MEETING: FOOH W/ 5 1/2" CSG. TOTAL OF 95JTS. R.U. ROTARY WIRE LINE AND RIH PREFORMING BOND LONG FROM 3150-SFC. PU 3 1/8" GUN & RIH PERFORATING 8 5/8" CASING FROM 3100-3099. POOH AND RD WIRE LINE. RIH W/ 98JTS 2 7/8" TBG TO 3,091. ATTEMPT TO ESTABLISH INJECTION RATE. PRESSURE UP TO 800PSI W/ NO INJECTION. CONTACT NMOCD ROBERT TRUILLIO AND GOT APPROVAL TO SET PLUG FROM 3200'-2870'. SWIFN.

9/26/25

HELD SAFETY MEETING: TBG/ CSG 0PSI. R.I.H. TO 3197'. CIRCULATE AND CONDITION MUD. MIX & SPOT 90SXS 14.8# CMT FROM 3197'-2800' +/- . POOH LAYING DOWN TBG TO 2790' AND REVERSE OUT. WOC. HAVE SELECT VACUUM TRUCKS DELIVER 250BBLs OF 9# WBM. CIRCUALTE OUT 8.3# WBM FROM 2790'. RIH TAG TOC AT 2830'. POOH LAYING RACKING 2400' TBG IN DERRICK. RU WIRE LINE & RIH W/ 3 1/8" GUN PERFORATING FROM 2400-2399. POOH & RD WIRE LINE. RIH W/ TBG TO 2395'. ATTEMPT TO ESTABLISH INJECTION RATE. MIX & SPOT 173SXS 14.8# CMT PLUG SQZ 12.5BBLs CMT OUT OF 8 5/8". LEFT TOP OF CEMENT AT 2000 +/- POOH & REVERSE OUT. CLEAN UP CEMENT UNIT. SWIFN

9/27/25

HELD SAFETY MEETING. TBG/CSG SLIGHT VACUUM. RIH TAG TOC AT 2018'. POOH LAYING DOWN ALL TBG. RU WIRE LINE & RIH PERFORATING 8 5/8" CSG AT 379'-378' W/ 3 1/8" GUN. POOH & RD WIRE LINE. DUG AROUND WELL HEAD TO LOCATE SFC CSG VALVE. NO VALVE FOR THE SFC CSG. CONTACT NMOCD ROBERT TRUILLIO AND VERBALLY APPROVED SETTING BALANCE PLUG IN 8 5/8" CSG TO SFC. MIX AND PUMPED 90SXS 14.8# CMT PLUG FROM 379'-0'. WASH DOWN EQUIPMENT AND SWIFN.

9/28/25

HELD SAFETY MEETING: RDWOR & ALL EQUIPMENT. CLEAN ALL EQUIPMENT. HAUL OFF 1LD OF WBM.

10/6/25

DIG AROUND THE WELL AND CUT IT OUT. WELDED PLATE ON THE CASIN. WE WELDED LETTERS ON THE INDICATOR POST AND WELDED ON THE CASIN PLATE. WE PUR CONCRETE AROUND THE INDICATOR POST AND BACK FILL THE WELL.

MARK L SHIDLER, Inc. Downhole Schematic

WELL NAME: State #23-1 **FIELD:** High Plains (Baugh A & C) **API:** 30-025-20419

LOCATION: 660' FSL & 660' FWL of Sec 23, T14S, R34E, Lea County, NM

WP ID# **DATE:** 07 OCT 25 **SPUD:** 28 FEB 1963

Prepared by: N. P. Mares

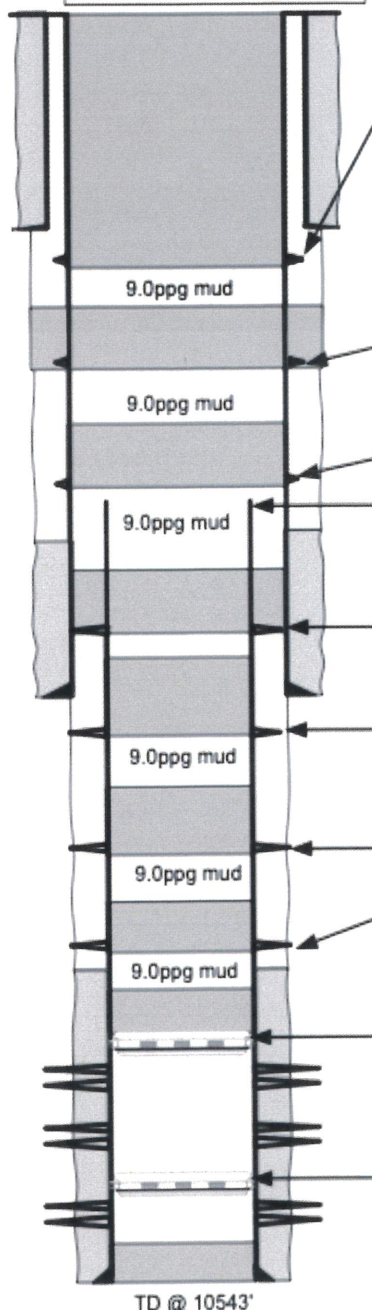
FINAL WELLBORE

GL Elev: 4095'
KB Elev: 4107'
DF Elev: 4106'
RKB: 12'

NOTE: All depths are RKB otherwise noted

Perf @ 378'-379' @ 4spf No surface csg valve. Rec'd permission from State of NM, Robert Trucillo to spot balanced cmt plug from 379' to surface. Spot/balanced cmt plug w/ 90sxs 14.8ppg Class C cmt from 379' to surface.

TOC @ 475' calculated
13-3/8" 48# H-40 ST&C csg @ 329' w/ 17" hole, cmt'd w/ 350sxs reg cmt circ to surface



Perf @ 2399'-2400' @ 4spf cmt sqz/spot 173sxs 14.8ppg Class C cmt w/ sqz 62sxs outside 8-5/8" csg & spot balanced plug inside 8-5/8" csg w/ 111sxs from 2400'-2000'. WOC & tag w/ tbg @ 2018'

Sqz perms @ 3099'-3100 @ 4spf, unable to cmt sqz. Spot bal cmt plug 90sxs Class C cmt 14.8ppg from 3197' to 2800'. Bubble test confirmed good. WOC. Tagged w/ tbg @ 2830'

Cut 5-1/2" csg @ 3150'
TOC @ 3600' determined by temperature survey

Sqz perms @ 3901'-3905' @ 4spf; unable to cmt sqz. Spot bal cmt plug 26sxs Class C cmt 14.8ppg from 3946' to 3706'. Bubble test confirmed good. WOC. Tagged w/ e-line @ 3670'

8-5/8" 32# J-55 ST&C csg @ 4550' w/ 11" hole, cmt'd w/ 200sxs Poz & 100sxs Neat cmt

Sqz perms @ 4621'-4625' @ 4spf; unable to cmt sqz. Spot bal cmt plug 26sxs Class C cmt 14.8ppg from 4665' to 4425'. Bubble test confirmed good. WOC. Tagged w/ tbg @ 4365'

Sqz perms @ 6396'-6400' @ 4spf; unable to cmt sqz. Spot bal cmt plug 26sxs Class C cmt 14.8ppg from 6452' to 6212'. Bubble test confirmed good. WOC. Tagged w/ tbg @ 6166'

Sqz perms @ 7376'-7380' @ 4spf; unable to cmt sqz. Spot bal cmt plug 26sxs Class C cmt 14.8ppg from 7450' to 7210'. Bubble test confirmed good. WOC. Tagged w/ tbg @ 7185'
TOC @ 8400' Determined by Temperature Survey

CIBP set @ 9650' & spot 25sxs of Class H cmt 16.4ppg on top w/ TOC @ 9450'. WOC. Tagged w/ tbg @ 9445'.
perms: 9662'-9674'

perms: 10344'-10412'

CIBP set @ 10450' 12/1973

perms: 10463'-10498'
OPBD @ 10498

5-1/2 17# & 20# LT&C csg @ 10543' w/ 7-7/8" hole, cmt'd w/ 400sxs 50/50 Incorr/Poz

TD @ 10543'

Sante Fe Main Office
Phone: (505) 476-3441

General Information
Phone: (505) 629-6116

Online Phone Directory
<https://www.emnrd.nm.gov/ocd/contact-us>

State of New Mexico
Energy, Minerals and Natural Resources
Oil Conservation Division
1220 S. St Francis Dr.
Santa Fe, NM 87505

CONDITIONS

Action 551932

CONDITIONS

Operator: MARK L SHIDLER INC 1313 Campbell Road Houston, TX 77055	OGRID: 14096
	Action Number: 551932
	Action Type: [C-103] Sub. Plugging (C-103P)

CONDITIONS

Created By	Condition	Condition Date
gcordero	Clean Location in accordance with 19.15.25.10 NMAC.	2/10/2026
gcordero	Submit C-103Q within one year of plugging.	2/10/2026