

Submit 1 Copy To Appropriate District Office
 District I - (575) 393-6161
 1625 N. French Dr., Hobbs, NM 88240
 District II - (575) 748-1283
 811 S. First St., Artesia, NM 88210
 District III - (505) 334-6178
 1000 Rio Brazos Rd., Aztec, NM 87410
 District IV - (505) 476-3460
 1220 S. St. Francis Dr., Santa Fe, NM 87505

State of New Mexico
 Energy, Minerals and Natural Resources

Form C-103
 Revised July 18, 2013

OIL CONSERVATION DIVISION
 1220 South St. Francis Dr.
 Santa Fe, NM 87505

WELL API NO.	30-025-55346
5. Indicate Type of Lease	STATE <input type="checkbox"/> FEE <input checked="" type="checkbox"/>
6. State Oil & Gas Lease No.	
7. Lease Name or Unit Agreement Name	WHITE RUSSIAN AGI
8. Well Number	1
9. OGRID Number	333151
10. Pool name or Wildcat	AGI, Devonian-Fusselman
11. Elevation (Show whether DR, RKB, RT, GR, etc.)	
3,843' (GR)	

SUNDRY NOTICES AND REPORTS ON WELLS
 (DO NOT USE THIS FORM FOR PROPOSALS TO DRILL OR TO DEEPEN OR PLUG BACK TO A DIFFERENT RESERVOIR. USE "APPLICATION FOR PERMIT" (FORM C-101) FOR SUCH PROPOSALS.)

1. Type of Well: Oil Well Gas Well Other ACID GAS INJECTION

2. Name of Operator: Lea Midstream, LLC

3. Address of Operator: 3500 Maple Avenue, Suite 700
 Dallas, Texas 75219

4. Well Location
 Unit Letter K : 1,593 feet from the SOUTH line and 1,989 feet from the WEST line
 Section 17 Township 19S Range 35E NMPM County LEA

12. Check Appropriate Box to Indicate Nature of Notice, Report or Other Data

NOTICE OF INTENTION TO:		SUBSEQUENT REPORT OF:	
PERFORM REMEDIAL WORK <input type="checkbox"/>	PLUG AND ABANDON <input type="checkbox"/>	REMEDIAL WORK <input type="checkbox"/>	ALTERING CASING <input type="checkbox"/>
TEMPORARILY ABANDON <input type="checkbox"/>	CHANGE PLANS <input type="checkbox"/>	COMMENCE DRILLING OPNS. <input type="checkbox"/>	P AND A <input type="checkbox"/>
PULL OR ALTER CASING <input type="checkbox"/>	MULTIPLE COMPL <input type="checkbox"/>	CASING/CEMENT JOB <input checked="" type="checkbox"/>	
DOWNHOLE COMMINGLE <input type="checkbox"/>			
CLOSED-LOOP SYSTEM <input type="checkbox"/>			
OTHER: <input type="checkbox"/>		OTHER: <input type="checkbox"/>	

13. Describe proposed or completed operations. (Clearly state all pertinent details, and give pertinent dates, including estimated date of starting any proposed work). SEE RULE 19.15.7.14 NMAC. For Multiple Completions: Attach wellbore diagram of proposed completion or recompletion.

WHITE RUSSIAN AGI #1 (API: 30-025-55346) -- THIRD INTERMEDIATE CASING AND CEMENTING REPORT

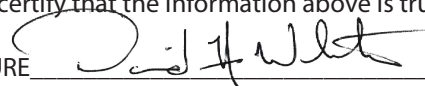
On December 16-17 2025, the 9.625-inch 3rd intermediate casing was installed in a 12.25-inch, 10,904 ft. borehole. The shoe was set at a depth of 10,903 ft. and the string was successfully cemented in two stages. Stage 1 consisted of 905 sacks of 12 lbs/gal lead cement and 335 sacks of 13.5 lbs/gal tail cement. ECP/DVT tools were set at a base depth of 6,215 feet and Stage 2 cementing was completed utilizing 1,315 sacks of 12.6 lbs/gal lead cement and 150 sacks of 14.8 lb/gal tail cement. Greater than 300 barrels of cement was circulated to the surface. The details of casing and cementing operations are summarized below.

Casing	Jts.	Size	Wt. (lb/ft)	Grade	Thread	Depth Set	Stage	Cement	Type/Class	Sacks	Yield (ft ³ /sk)
3rd. Int	260	9.625"	53.5	L80 HC	Mod. BTC	10903.5 ft.	1	Lead Tail	Class C - NeoCem	905	1.92
							2	Lead Tail	Class C - NeoCem	1315	1.72
										150	1.34

After waiting on cement for no less than 24 hours, a cement bond log was run that verified a successful bond had been achieved. Additionally, the third intermediate casing was successfully pressure tested at 2,500 psi for a period greater than 30 minutes. The results of the casing pressure test are included as an attachment to this submittal. Prior to casing and cementing activities, NMOCD District Office personnel (ocd.engineer@emnrn.nm.gov) were provided notice (on December. 15, 2025) of the intent to commence casing and cementing operations, but no personnel elected to witness the operations.

Spud Date: November 4, 2025 Rig Release Date: _____

I hereby certify that the information above is true and complete to the best of my knowledge and belief.

SIGNATURE  TITLE Consultant to Lea Midstream DATE 12/30/2025
 Type or print name David A. White, P.G. E-mail address: dwhite@geolex.com PHONE: 505-842-8000

For State Use Only

APPROVED BY: _____ TITLE _____ DATE _____

ATTACHMENT 1

HALLIBURTON CEMENTING REPORT AND JOB SUMMARY (White Russian AGI #1 -- Third Intermediate Casing)

HALLIBURTON

Cementing Job Summary

The Road to Excellence Starts with Safety

Sold To #: 385331	Ship To #: 9276580	Quote #: 0023286811	Sales Order #: 0910505725
Customer: PERMIAN OILFIELD PARTNERS LLC-EBUS		Customer Rep: MIKE THOMPSON	
Well Name: WHITE RUSSIAN		Well #: AGI 001	API/UWI #: 30-025-55346-00
Field:	City (SAP): HOBBS	County/Parish: LEA	State: NEW MEXICO
Legal Description:			
Contractor: NABORS DRLG		Rig/Platform Name/Num: NABORS X52	
Job BOM: 7523 7523			
Well Type: OIL			
Sales Person: HALAMERICA\HBAQ995		Srcv Supervisor: Gerardo Hernandez Trevizo	
Job			

Formation Name			
Formation Depth (MD)	Top		Bottom
Form Type			BHST
Job depth MD	10900ft		Job Depth TVD
Water Depth			Wk Ht Above Floor
Perforation Depth (MD)	From		To

Well Data

Description	New / Used	Size in	ID in	Weight lbm/ft	Thread	Grade	Top MD ft	Bottom MD ft	Top TVD ft	Bottom TVD ft
Well Attachment								6300		
Casing		13.625	12.375	88.2	BTC		0	6285		
Casing		9.625	8.535	53.5	BTC	HCL-80	0	10903.21		
Open Hole Section			12.25				6285	10904		

Tools and Accessories

Type	Size in	Qty	Make	Depth ft	Type	Size in	Qty	Make
Guide Shoe	9.625			10900	Top Plug	9.625		HES
Float Shoe	9.625				Bottom Plug	9.625		HES
Float Collar	9.625				SSR plug set	9.625		HES
Insert Float	9.625				Plug Container	9.625		HES
Stage Tool	9.625				Centralizers	9.625		HES

Fluid Data

Stage/Plug #: 1										
Fluid #	Stage Type	Fluid Name	Qty	Qty UoM	Mixing Density lbm/gal	Yield ft ³ /sack	Mix Fluid Gal	Rate bbl/mln	Total Mix Fluid Gal	
1	Gel Spacer w/ Red Dye	TUNED PRIME CEMENT SPACER SYS	40	bbl	8.4			4		
		2.5 lbm/bbl	WG-36, 50 LB BAG (101627238)							
		0.05 lbm/bbl	RHODAMINE RED LIQUID DYE # 2 (101201084)							
Fluid #	Stage Type	Fluid Name	Qty	Qty UoM	Mixing Density lbm/gal	Yield ft ³ /sack	Mix Fluid Gal	Rate bbl/mln	Total Mix Fluid Gal	



Cementing Job Summary

2	NeoCem™ - 1st Stg Lead Cement	NeoCem TM	905	sack	12	1.917		5	10.88
Fluid #	Stage Type	Fluid Name	Qty	Qty UoM	Mixing Density lbm/gal	Yield ft3/sack	Mix Fluid Gal	Rate bbl/mi n	Total Mix Fluid Gal
3	NeoCem™ - 1st Stg Tail Cement	NeoCem TM	335	sack	13.5	1.376		5	6.91
4	Displacement Fluid	Displacement Fluid	768	bbl	8.4			5	
5	Gel Spacer w/ Red Dye	TUNED PRIME CEMENT SPACER SYS	20	bbl	8.4			4	
0.05 lbm/bbl		RHODAMINE RED LIQUID DYE # 2 (101201084)							
2.5 lbm/bbl		WG-36, 50 LB BAG (101627238)							
Cement Left In Pipe	Amount	48.29ft			Reason			Shoe Joint	
Fluid Data									
Stage/Plug #: 2									
1	Gel Spacer w/ Red Dye	TUNED PRIME CEMENT SPACER SYS	40	bbl	8.4			4	
0.05 lbm/bbl		RHODAMINE RED LIQUID DYE # 2 (101201084)							
2.5 lbm/bbl		WG-36, 50 LB BAG (101627238)							
2	NeoCem™ - 2nd Stg Lead Cement	NeoCem TM	1315	sack	12.6	1.717		5	9.14
Fluid #	Stage Type	Fluid Name	Qty	Qty UoM	Mixing Density lbm/gal	Yield ft3/sack	Mix Fluid Gal	Rate bbl/mi n	Total Mix Fluid Gal

HALLIBURTON

Cementing Job Summary

3	HalCem™ - 2nd Stg Tail Cement	HALCEM (TM) SYSTEM	150	sack	14.8	1.337		5	6.44
6.44 Gal		FRESH WATER							
94 lbm		CLASS C / PREMIUM PLUS, BULK; CEM - (1257441)							
0.25 %		HR-800, 50 LB SACK (101619742)							
Fluid #	Stage Type	Fluid Name	Qty	Qty UoM	Mixing Density lbm/gal	Yield ft3/sack	Mix Fluid Gal	Rate bbl/min	Total Mix Fluid Gal
4	Displacement Fluid	Displacement Fluid	438	bbl	10			5	
Cement Left In Pipe	Amount	0ft	Reason				Shoe Joint		
Mix Water:pH ##	Mix Water Chloride:## ppm		Mix Water Temperature:## °F °C						
Cement Temperature:## °F °C	Plug Displaced by:## lb/gal kg/m3		Disp. Temperature:## °F °C						
	XXXX								
Plug Bumped?Yes	Bump Pressure:### psi MPa		Floats Held?Yes						
Cement Returns:COMMENT S	Returns Density:## lb/gal kg/m3		Returns Temperature:## °F °C						
Comment 130 BBLS FIRST STAGE AND 75 BBLS 2ND STAGE									

PERMIAN OILFIELD PARTNERS LLC WHITE RUSSIAN #AGI 001 MULTISTAGE 0910505725

EVENT	EVENT	VOLUME	SKS	#/GAL	FT3/SK	GAL/SK	EVENT	DISCRPTION
1	START		MAX PSI 2600				1	START JOB
9	WATER	3.0					2	END JOB
6	TEST LINES	5500.0					3	ZERO FLOW TOTALS
10	GEL SPACER	40.0		RED DYE			5	PRIME PUMPS
13	LEAD CEMENT	309.0	905	12	1.92	10.88	6	TEST LINES
15	TAIL CEMENT	82.0	335	13.5	1.38	6.91		
4	SHUT DOWN						8	BREAK FORMATION
22	DROP PLUG		9 5/8 FIRST STAGE TOP PLUG				10	PUMP SPACER TWC
23	PUMP DISPL.	768.0		WATER			11	CLEAN LINES
4	SLOW RATE	720.0					12	DROP BOTTOM PLUG
26	BUMP PLUG			500 OVER			13	PUMP LEAD CEMENT
28	SET PACKER							
4	CHECK FLOATS						14	PUMP CEMENT
33	DROP BALL						15	PUMP TAIL CEMENT
30	OPEN DV TOOL						16	PUMP CAP CEMENT
34	CIRCULATE WELL						17	PUMP FOAM CEMENT
				2ND STAGE			18	START ADDITIVES
10	GEL SPACER	40.0					19	STOP ADDITIVES
13	LEAD CEMENT	403.0	1315	12.6	1.72	9.14	20	START N2
15	TAIL CEMENT	36.0	150	14.8	1.34	6.44		
48	SHUTDOWN							
22	DROP PLUG		2ND STAGE 9 5/8 TOP PLUG					
23	PUMP DISPL.	438.0						
4	SLOW RATE	410.0						
26	BUMP PLUG			1000 PSI OVER			21	STOP N2
4	CHECK FLOATS							
2	END JOB							
			DO Not Over Displace				22	DROP TOP PLUG
							23	PUMP DISPLACEMENT
Displacement	TOTAL PIPE	SHOE JOINT	FLOAT COLLAR	BBLUFT	H2O REQ.		24	PUMP WELL FLUID
768, 438	10903.21	46.29	10856.92	.97076	600		25	DISPLMNT REACHED CMNT
		Enter Information Highlighted In Black Do Not Enter in Information in Red					26	BUMPED PLUG
		*****Use Mud Scales on Each Tier*****					27	SHUT IN WELL
LIFT PSI							28	SET PACKER
Max Rate	8.00						29	RELEASE PACKER
CALCULATED DIFFERENTIAL		1356, 1387	TOTAL FLUID PUMPED				30	OPEN MISC
Collapse	8850	Burst	7930		910505725		31	CLOSE MISC
							32	DROP PLUG
							33	DROP BALL
							34	CIRCULATE WELL
							35	REVERSE CIRCULATE WELL
							36	CLEAN HOLE
							37	PAUSE
							38	RESUME

VIDA # H174528

Permian

HALLIBURTON

iCem® Service

**PERMIAN OILFIELD PARTNERS
LLC-EBUS**

For:

Date: Wednesday, December 17, 2025

WHITE RUSSIAN #AGI 001

Case 1

Job Date: Wednesday, December 17, 2025

Sincerely,

HALLIBURTON

Customer: PERMIAN OILFIELD PARTNERS LLC-EBUS
 Job: 9 5/8 MULTISTAGE
 Case: Case 1 | SO#: 0910505725

1.0 Real-Time Job Summary

1.1 Job Event Log

Type	Seq	Activity	Graph Label	Date	Time	Source	Pump A Pressure (psi)	Dwell Density (ppg)	Cmb Pump Rate (bbl/min)	Cmb Stg Total (bbl)	Comments
Event	1	Call Out	Call Out	12/16/2025	15:00:05	USER	-0.94	8.45	0.00	16.51	CALLED OUT FOR PERMIAN OILFIELD PARTNERS LLC WHITE RUSSIAN #AGI 001 MULTISTAGE 0910505725 WITH A JOB TIME OF 2300 12-16-25. 2 PUMPS, 2 BINS, 1 JOB TIME 660, 1 PLUG CONTAINER.
Event	2	Pre-Convoy Safety Meeting	Pre-Convoy Safety Meeting	12/16/2025	15:30:03	USER	-0.94	8.45	0.00	16.51	GATHERED CREW TO GO OVER JSA AND ROUTE TO LOCATION
Event	3	Depart from Service Center or Other Site	Depart from Service Center or Other Site	12/16/2025	16:00:06	USER	-0.94	8.45	0.00	16.51	
Event	4	Arrive at Location from Service Center	Arrive at Location from Service Center	12/16/2025	17:30:03	USER	-0.94	8.45	0.00	16.51	ARRIVED ON LOCATION, RIG CREW RUNNING CASING. TD 10904' TP 10903.21'

iCem® Service
 (v. 9.0.336.0)

Created: Wednesday, December 17, 2025

HALLIBURTON

Customer: PERMIAN OILFIELD PARTNERS LLC-EBUS
 Job: 9 5/8 MULTISTAGE
 Case: Case 1 | SO#: 0910505725

ONLINE CEMENTING.

Event 5	Pre-Rig Up Safety Meeting	Pre-Rig Up Safety Meeting	12/16/2025	17:45:05	USER	-0.94	8.45	0.00	16.51	GATHERED CREW TO GO OVER JSA AND RIG UP PROCEDURES
Event 6	Rig-Up Equipment	Rig-Up Equipment	12/16/2025	18:00:05	USER	-0.94	8.45	0.00	16.51	COMPLETED RIG UP SAFELY
Event 7	Rig-Up Completed	Rig-Up Completed	12/16/2025	19:00:04	USER	-0.94	8.45	0.00	16.51	GATHERED CREW TO GO OVER JSA AND JOB PROCEDURES, VERIFIED PUMP SCHEDULE WITH COMPANY REPS.
Event 8	Pre-Job Safety Meeting	Pre-Job Safety Meeting	12/16/2025	23:30:03	USER	-0.94	8.45	0.00	16.51	CASING IS NOW ON BOTTOM AND RIG IS CIRCULATING WELL. FINISHED RIGGING UP PUMPS.
Event 9	Casing on Bottom	Casing on Bottom	12/16/2025	23:59:06	USER	-0.94	8.45	0.00	16.51	PUMP WATER SPACER TO FILL LINES
Event 10	Start Job	Start Job	12/17/2025	01:56:52	NONE	-0.02	8.49	0.00	16.51	TEST LINES TO MAKE SURE THEY ARE SAFE AND HAVE NO LEAKS.
Event 11	Prime Pumps	Prime Pumps	12/17/2025	01:57:30	USER	1.88	8.49	0.00	16.51	PUMP 40 BBL GEL SPACER WITH RED DYE
Event 12	Test Lines	Test Lines	12/17/2025	01:59:05	USER	67.76	8.52	2.94	18.69	
Event 13	Pump Spacer 2	Pump Spacer 2	12/17/2025	02:09:54	NONE	80.89	7.77	3.91	8.98	

iCem® Service
 (v. 9.0.336.0)

Created: Wednesday, December 17, 2025

HALLIBURTON

Customer: PERMIAN OILFIELD PARTNERS LLC-EBUS
Job: 9 5/8 MULTISTAGE
Case: Case 1 | SO#: 0910505725

Event 14	Pump Lead Cement	12/17/2025	02:22:37	NONE	255.29	11.91	7.10	21.11	PUMP 905 SKS/ 309 BBLs OF NEOCEM 1ST STAGE LEAD CEMENT AT 12 PPG, 1.92 YIELD, 10.88 GAL/SK
Event 15	Pump Tail Cement	12/17/2025	03:04:53	NONE	307.46	13.63	7.04	8.82	PUMP 335 SKS/ 82 BBLs OF NEOCEM 1ST STAGE TAIL CEMENT AT 13.5 PPG, 1.38 YIELD, 6.91 GAL/SK
Event 16	Shutdown	12/17/2025	03:20:26	NONE	50.78	12.85	0.00	87.04	SHUTDOWN TO DROP PLUG
Event 17	Drop Top Plug	12/17/2025	03:23:49	NONE	10.17	13.53	0.00	0.00	DROP 9 5/8 FORUM 1ST STAGE TOP PLUG
Event 18	Pump Displacement	12/17/2025	03:25:42	NONE	55.93	8.77	3.98	2.60	PUMP DISPLACEMENT WITH 320 BBLs OF MUD, 20 BBLs OF WATER ACROSS DV TOOL PER COMPANY REPS, AND 428 BBLs OF MUD FOR A TOTAL DISPLACEMENT OF 768 BBLs.
Event 19	Other	12/17/2025	05:11:47	NONE	1284.18	8.54	4.17	763.71	SPOTTED DYE ABOVE DV TOOL SLOW RATE TO BUMP PLUG 4 BPM WITH FINAL PRESSURE 1600 PSI

iCem® Service
(v. 9.0.336.0)

Created: Wednesday, December 17, 2025

HALLIBURTON

Customer: PERMIAN OILFIELD PARTNERS LLC-EBUS
 Job: 9 5/8 MULTISTAGE
 Case: Case 1 | SO#: 0910505725

Event 20	Bump Plug	Bump Plug	12/17/2025	05:23:03	NONE	1833.02	8.58	0.00	808.44	BUMP PLUG AND BROUGHT PRESSURE UP TO 1848 PSI
Event 21	Other	Other	12/17/2025	05:26:34	NONE	22.77	8.43	0.00	808.44	CHECK FLOATS AND HAD 5 BBLs BACK TO THE PUMP
Event 22	Drop Ball	Drop Ball	12/17/2025	05:30:03	NONE	-0.94	8.41	0.00	808.44	DROP DV TOOL OPENING CONE AND WAITED 30 MINUTES
Event 23	Set Packer	Set Packer	12/17/2025	06:08:30	NONE	265.51	8.47	0.00	0.78	SET PACEKR AND CONTINUED TO PRESSURE UP IN INCRMENTS TO OPEN DV TOOL.
Event 24	Open Multiple Stage Cementer	Open Multiple Stage Cementer	12/17/2025	06:24:09	NONE	1109.05	8.52	0.00	2.40	OPENED DV TOOL WITH 1109 PSI
Event 25	Circulate Well	Circulate Well	12/17/2025	06:24:50	NONE	388.84	8.45	0.00	0.00	CONTINUED TO CIRCULATE ABOVE DV TOOL. CIRCULATED 130 BBLs/ 380 SKS OF 1ST STAGE LEAD CEMENT BACK TO SURFACE
Event 26	Pump Spacer 2	Pump Spacer 2	12/17/2025	07:47:24	NONE	72.43	7.98	4.18	0.07	PER COMPANY REP GO AHEAD AND GO INTO 2ND STAGE AFTER CIRCULATING WELL.

iCem® Service
 (v. 9.0.336.0)

Created: Wednesday, December 17, 2025

PUMP 40 BBLS OF GEL SPACER WITH RED DYE										
Event 27	Pump Lead Cement	Pump Lead Cement	12/17/2025	08:00:11	NONE	256.32	12.66	7.07	14.24	PUMP 1315 SKS/ 403 BBLS OF NEOCEM 2ND STAGE LEAD CEMENT AT 12.6 PPG, 1.72 YIELD, 9.14 GAL/SK
Event 28	Pump Tail Cement	Pump Tail Cement	12/17/2025	09:04:58	NONE	184.01	14.86	4.22	8.85	PUMP 150 SKS/ 36 BBLS OF HALCEM C 2ND STAGE TAIL CEMENT AT 14.8 PPG, 1.34 YIELD, 6.44 GAL/SK
Event 29	Shutdown	Shutdown	12/17/2025	09:12:13	NONE	22.69	15.41	0.00	0.00	SHUTDOWN TO DROP 2ND STAGE PLUG
Event 30	Drop Top Plug	Drop Top Plug	12/17/2025	09:14:06	USER	10.92	15.37	0.00	0.00	DROP 2ND STAGE 9 5/8 FORUM CLOSING TOP PLUG
Event 31	Pump Displacement	Pump Displacement	12/17/2025	09:15:41	NONE	102.98	8.65	5.38	3.09	PUMP DISPLACEMENT WITH 438 BBLS OF MUD
Event 32	Other	Other	12/17/2025	10:10:27	NONE	1542.80	8.43	4.20	408.34	SLOW RATE TO BUMP PLUG 4 BPM WITH FINAL PRESSURE 1600 PSI
Event 33	Bump Plug	Bump Plug	12/17/2025	10:37:51	NONE	3138.07	8.57	0.00	448.72	DID NOT BUMP WITH CALCULATED DISPLACEMENT,

iCem® Service
(v. 9.0.336.0)

Created: Wednesday, December 17, 2025

HALLIBURTON

Customer: PERMIAN OILFIELD PARTNERS LLC-EBUS
 Job: 9 5/8 MULTISTAGE
 Case: Case 1 | SO#: 0910505725

SHUTDOWN AND
 GATHERED WITH
 COMPANY REPS AND
 WAS REQUESTED TO
 CONTINUE TO PUMP,
 VERIFIED WITH
 COMPANY REPS AND
 FORUM TOOL HAND.
 BEGAN PUMPING AND
 PLUG BUMPED RIGHT
 AWAY, PRESSURED UP
 TO 3139 PSI TO SEAT
 PLUG AND CLOSE DV
 TOOL PER FORUM
 TOOL HAND.

Event	34	Check Floats	Check Floats	12/17/2025	10:41:20	USER	79.87	8.34	0.00	448.72	CHECK FLOATS AND HAD 5 BBLS BACK TO THE PUMP.
Event	35	End Job	End Job	12/17/2025	10:41:33	NONE	21.59	8.33	0.00	448.72	JOB COMPLETE CIRCULATED 130 BBLS/ 380 SKS OF CEMENT ABOVE THE TOOL FROM FIRST STAGE. CIRCULATED 75 BBLS/ 245 SKS OF CEMENT ON 2ND STAGE.

iCem® Service
 (v. 9.0.336.0)

Created: Wednesday, December 17, 2025

HALLIBURTON

Customer: PERMIAN OILFIELD PARTNERS LLC-EBUS
Job: 9 5/8 MULTISTAGE
Case: Case 1 | SO#: 0910505725

Event 36	Pre-Rig Down Safety Meeting	Pre-Rig Down Safety Meeting	12/17/2025	10:45:05	USER	GATHERED CREW TO GO OVER JSA AND RIG DOWN PROCEDURES
Event 37	Rig-Down Equipment	Rig-Down Equipment	12/17/2025	11:00:04	USER	
Event 38	Rig-Down Completed	Rig-Down Completed	12/17/2025	13:00:03	USER	COMPLETED RIG DOWN SAFELY
Event 39	Pre-Convoy Safety Meeting	Pre-Convoy Safety Meeting	12/17/2025	13:15:05	USER	GATHERED CREW TO GO OVER JSA AND ROUTE BACK TO FACILITY
Event 40	Depart Location	Depart Location	12/17/2025	13:30:03	USER	THANK YOU

iCem® Service
(v. 9.0.336.0)

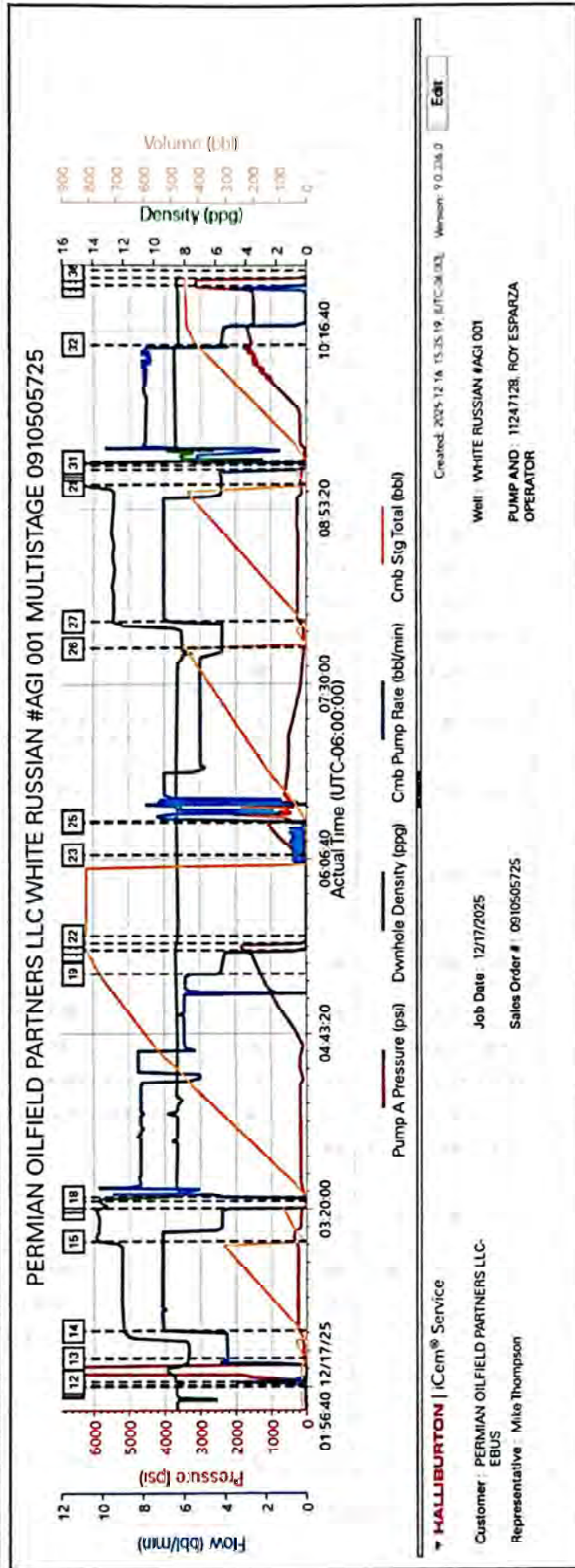
Created: Wednesday, December 17, 2025

HALLIBURTON

Customer: PERMIAN OILFIELD PARTNERS LLC-EBUS
Job: 9 5/8 MULTISTAGE
Case: Case 1 | SO#: 0910505725

2.0 Attachments

2.1 Case 1-PERMIAN OILFIELD PARTNERS LLC WHITE RUSSIAN #AGI 001 MULTISTAGE 0910505725.png



iCem® Service
(v. 9.0.336.0)

Created: Wednesday, December 17, 2025

ATTACHMENT 2

**SUMMARY REPORT – 3RD INT. CASING/CEMENTING
(White Russian AGI #1 – API: 30-025-55346)**

Yield:	1.72	cuft/sk
Weight:	12.6	ppg
TOC:	surface	ft

Tail: 150sks Class C / Neo Cem

Yield:	1.34	cuft/sk
Weight:	14.8	ppg
TOC:		ft

2nd Stage Plug Down:

Bump Plug?	Yes	
Date:	12/17/2025	
Time:	10:37 AM	
Lift Pressure		psi
Rate	3	bpm
Displ. Fluid:	8.5 Brine	
Displ. Fluid Qty	438	bbl
Cmt Circ to Surface	244	sks

Notes:

300 bbls Cmt to surface

3rd Stage Cement Slurry:

Lead:

Yield:		cuft/sk
Weight:		ppg
TOC:		ft

Tail:

Yield:		cuft/sk
Weight:		ppg
TOC:		ft

3rd Stage Plug Down:

Bump Plug?		
Date:		
Time:		
Lift Pressure		psi
Rate		bpm
Displ. Fluid:		
Displ. Fluid Qty		bbl
Cmt Circ to Surface		sks

Notes:

--

WOC Time:		hrs
Csg Test Pressure Start:		psi
Csg Test Pressure End:		psi
Csg Test Pressure Time:		min

Regulatory Field Rep Notified:

OCD Engineer (ocd.engineer@emnrd.nm.gov) 11/15/2025 via email

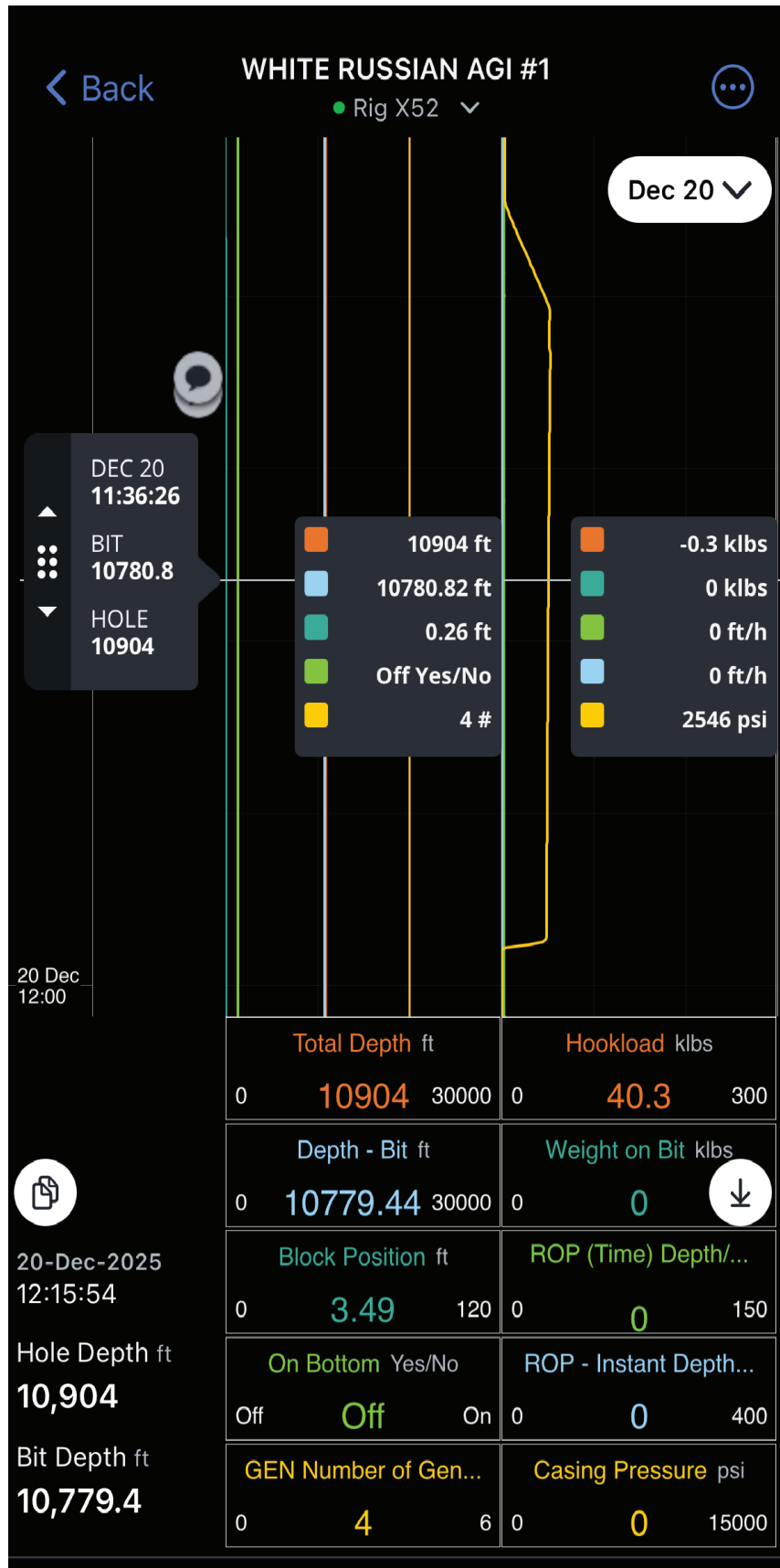
Witnessed? No

ATTACHMENT 3

**THIRD INT. CASING PRESSURE TEST
(WHITE RUSSIAN AGI #1 -- API: 30-025-55346)**

ATTACHMENT 3

White Russian AGI #1 (API: 30-025-55346)
 9.625-inch Third Intermediate Casing Pressure Test



Sante Fe Main Office
Phone: (505) 476-3441

General Information
Phone: (505) 629-6116

Online Phone Directory
<https://www.emnrd.nm.gov/ocd/contact-us>

State of New Mexico
Energy, Minerals and Natural Resources
Oil Conservation Division
1220 S. St Francis Dr.
Santa Fe, NM 87505

CONDITIONS

Action 541144

CONDITIONS

Operator: Lea Midstream, LLC 3500 Maple Ave Dallas, TX 75219	OGRID: 333151
	Action Number: 541144
	Action Type: [C-103] Sub. Drilling (C-103N)

CONDITIONS

Created By	Condition	Condition Date
anthony.harris	None	2/16/2026