

<b>Well Name:</b> POKER LAKE UNIT 13-24 PC	<b>Well Location:</b> T24S / R29E / SEC 13 / SENE / 32.218561 / -103.932815	<b>County or Parish/State:</b> EDDY / NM
<b>Well Number:</b> 707H	<b>Type of Well:</b> OIL WELL	<b>Allottee or Tribe Name:</b>
<b>Lease Number:</b> NMNM05912	<b>Unit or CA Name:</b> POKER LAKE UNIT	<b>Unit or CA Number:</b> NMNM71016X
<b>US Well Number:</b> 3001556749	<b>Operator:</b> XTO PERMIAN OPERATING LLC	

**Notice of Intent**

**Sundry ID:** 2891236

**Type of Submission:** Notice of Intent

**Type of Action:** APD Change

**Date Sundry Submitted:** 01/15/2026

**Time Sundry Submitted:** 03:25

**Date proposed operation will begin:** 01/22/2026

**Procedure Description:** \*\*\*Well record Clean-up\*\*\* XTO Permian Operating, LLC respectfully requests approval to revise the pool name as outlined in the previously approved Sundry Notice. The Pool Name for the Pool code 96473 is being updated from PEIRCE CROSSING; BONE SPRING to PIERCE CROSSING; BONE SPRING, EAST The dedicated acreage is changing for the following pools : WILDCAT S243006B; LWR BONE SPRING - From 160.00 to 80.00 PIERCE CROSSING; BONE SPRING, EAST - From 120.00 to 200.00 See attached C-102s reflecting the above changes.

**NOI Attachments**

**Procedure Description**

POKER\_LAKE\_UNIT\_13\_24\_PC\_707H\_96473\_C102\_FINAL\_01\_14\_2026\_20260115152233.pdf

POKER\_LAKE\_UNIT\_13\_24\_PC\_707H\_97753\_C102\_FINAL\_01\_14\_2026\_20260115152233.pdf

POKER\_LAKE\_UNIT\_13\_24\_PC\_707H\_11520\_C102\_FINAL\_01\_14\_2026\_20260115152233.pdf

Well Name: POKER LAKE UNIT 13-24 PC	Well Location: T24S / R29E / SEC 13 / SENE / 32.218561 / -103.932815	County or Parish/State: EDDY / NM
Well Number: 707H	Type of Well: OIL WELL	Allottee or Tribe Name:
Lease Number: NMNM05912	Unit or CA Name: POKER LAKE UNIT	Unit or CA Number: NMNM71016X
US Well Number: 3001556749	Operator: XTO PERMIAN OPERATING LLC	

**Operator**

I certify that the foregoing is true and correct. Title 18 U.S.C. Section 1001 and Title 43 U.S.C. Section 1212, make it a crime for any person knowingly and willfully to make to any department or agency of the United States any false, fictitious or fraudulent statements or representations as to any matter within its jurisdiction. Electronic submission of Sundry Notices through this system satisfies regulations requiring a

**Operator Electronic Signature:** VISHAL RAJAN **Signed on:** JAN 15, 2026 03:24 PM

**Name:** XTO PERMIAN OPERATING LLC

**Title:** Regulatory Clerk

**Street Address:** 6401 HOLIDAY HILL ROAD BLDG 5

**City:** MIDLAND **State:** TX

**Phone:** (432) 620-6704

**Email address:** VISHAL.RAJAN@EXXONMOBIL.COM

**Field**

**Representative Name:**

**Street Address:**

**City:** **State:** **Zip:**

**Phone:**

**Email address:**

**BLM Point of Contact**

**BLM POC Name:** MARIAH HUGHES **BLM POC Title:** Land Law Examiner

**BLM POC Phone:** 5752345972 **BLM POC Email Address:** MHUGHES@BLM.GOV

**Disposition:** Approved **Disposition Date:** 01/16/2026

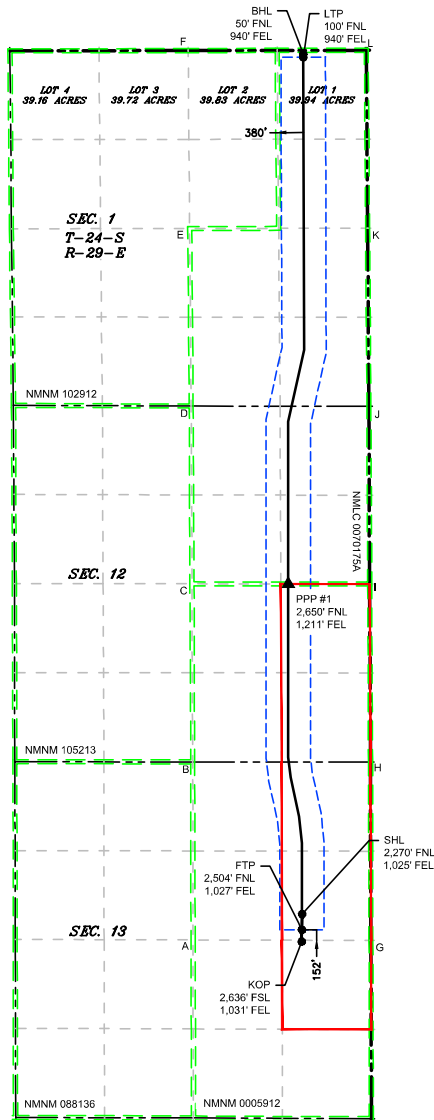
**Signature:** CODY LAYTON ASSISTANT FIELD  
MANAGER



ACREAGE DEDICATION PLATS

This grid represents a standard section. You may superimpose a non-standard section, or larger area, over this grid. Operators must outline the dedicated areage in a red box, clearly show the well surface location and bottom hole location, if it is directionally drilled, with the dimensions from the section lines in the cardinal directions. If this is a horizontal wellbore show on this plat the location of the First Take Point and Last Take Point, and the point within the completed interval (other than the First Take Point or Last Take Point) that is closest to any outer boundary of the tract.

Surveyors shall use the latest United States government survey or dependent resurvey. Well Locations will be in reference to the New Mexico Principal Meridian. If the land is not surveyed, contact the OCD Engineering Bureau. Independent subdivision surveys will not be accepted.



LEGEND

- SECTION LINE
- 330' BUFFER
- ▲ PPP
- TOWNSHIP LINE
- MINERAL LEASE
- WELL
- DEDICATED ACREAGE
- WELL BORE

WELL COORDINATE TABLE								
WELL	NAD 83 NME X	NAD 83 NME Y	NAD 83 LAT	NAD 83 LON	NAD 27 NME X	NAD 27 NME Y	NAD 27 LAT	NAD 27 LON
SHL	665,198.4	443,477.2	32.218561	-103.932815	624,014.9	443,417.9	32.218437	-103.932326
KOP	665,193.4	443,069.2	32.217440	-103.932836	624,009.9	443,009.9	32.217315	-103.932347
FTP	665,196.7	443,242.7	32.217916	-103.932823	624,013.2	443,183.3	32.217792	-103.932335
LTP	665,215.5	456,250.8	32.253673	-103.932606	624,032.4	456,191.1	32.253549	-103.932115
BHL	665,215.1	456,300.8	32.253811	-103.932606	624,032.0	456,241.1	32.253687	-103.932116
PPP #1	664,993.7	448,398.3	32.232090	-103.933418	623,810.3	448,338.8	32.231966	-103.932928

CORNER COORDINATE TABLE				
CORNER	NAD 83 NME X	NAD 83 NME Y	NAD 27 NME X	NAD 27 NME Y
A	663,576.0	443,093.9	622,392.5	443,034.6
B	663,570.2	445,748.2	622,386.8	445,688.8
C	663,559.1	448,399.9	622,375.8	448,340.4
D	663,547.9	451,051.0	622,364.7	450,991.4
E	663,524.5	453,696.5	622,341.4	453,636.9
F	663,501.0	456,347.1	622,318.0	456,287.4
G	666,224.6	443,088.1	625,041.0	443,028.8
H	666,218.3	445,746.5	625,034.9	445,687.1
I	666,205.3	448,396.9	625,022.0	448,337.4
J	666,193.9	451,046.7	625,010.6	450,987.1
K	666,174.6	453,699.9	624,991.5	453,640.3
L	666,154.8	456,352.9	624,971.7	456,293.2

V:\618.013\_XTO\_Energy - NM\003\_Poker\_Lake\_Unit\04 - 13-1,13-24\_PC - EDDY\_Wells\26 - PLU\_Pierce\_Canyon\_13-24\_707H\DWG\13-24\_PC\_707H.dwg

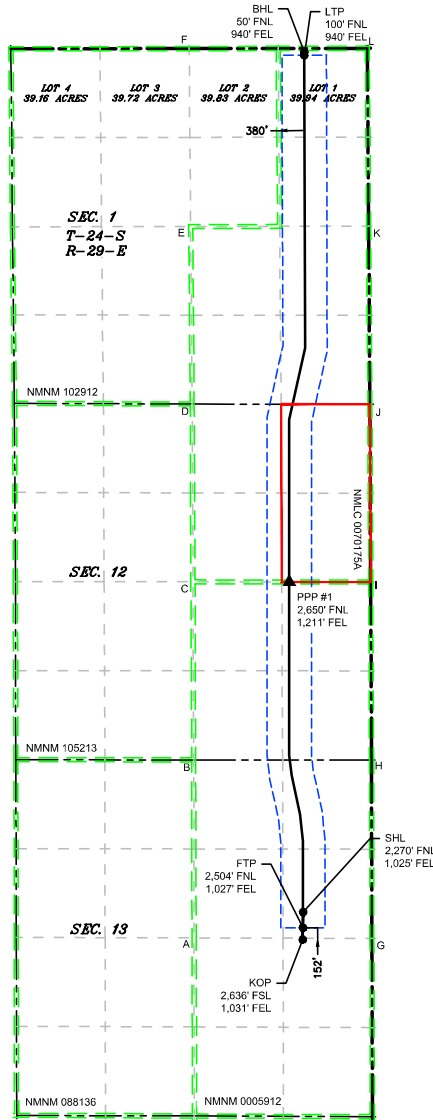


ACREAGE DEDICATION PLATS

This grid represents a standard section. You may superimpose a non-standard section, or larger area, over this grid. Operators must outline the dedicated areage in a red box, clearly show the well surface location and bottom hole location, if it is directionally drilled, with the dimensions from the section lines in the cardinal directions. If this is a horizontal wellbore show on this plat the location of the First Take Point and Last Take Point, and the point within the completed interval (other than the First Take Point or Last Take Point) that is closest to any outer boundary of the tract.

Surveyors shall use the latest United States government survey or dependent resurvey. Well Locations will be in reference to the New Mexico Principal Meridian. If the land is not surveyed, contact the OCD Engineering Bureau. Independent subdivision surveys will not be accepted.

V:\618.013\_XTO Energy - NM\003\_Poker Lake Unit\04 - 13-1,13-24 PC - EDDY Wells\26 - PLU Pierce Canyon 13-24 707H\DWG\13-24 PC 707H.dwg



LEGEND

- SECTION LINE
- TOWNSHIP LINE
- DEDICATED ACREAGE
- 330' BUFFER
- MINERAL LEASE
- WELL BORE
- ▲ PPP
- WELL

WELL COORDINATE TABLE								
WELL	NAD 83 NME X	NAD 83 NME Y	NAD 83 LAT	NAD 83 LON	NAD 27 NME X	NAD 27 NME Y	NAD 27 LAT	NAD 27 LON
SHL	665,198.4	443,477.2	32.218561	-103.932815	624,014.9	443,417.9	32.218437	-103.932326
KOP	665,193.4	443,069.2	32.217440	-103.932836	624,009.9	443,009.9	32.217315	-103.932347
FTP	665,196.7	443,242.7	32.217916	-103.932823	624,013.2	443,183.3	32.217792	-103.932335
LTP	665,215.5	456,250.8	32.253673	-103.932606	624,032.4	456,191.1	32.253549	-103.932115
BHL	665,215.1	456,300.8	32.253811	-103.932606	624,032.0	456,241.1	32.253687	-103.932116
PPP #1	664,993.7	448,398.3	32.232090	-103.933418	623,810.3	448,338.8	32.231966	-103.932928

CORNER COORDINATE TABLE				
CORNER	NAD 83 NME X	NAD 83 NME Y	NAD 27 NME X	NAD 27 NME Y
A	663,576.0	443,093.9	622,392.5	443,034.6
B	663,570.2	445,748.2	622,386.8	445,688.8
C	663,559.1	448,399.9	622,375.8	448,340.4
D	663,547.9	451,051.0	622,364.7	450,991.4
E	663,524.5	453,696.5	622,341.4	453,636.9
F	663,501.0	456,347.1	622,318.0	456,287.4
G	666,224.6	443,088.1	625,041.0	443,028.8
H	666,218.3	445,746.5	625,034.9	445,687.1
I	666,205.3	448,396.9	625,022.0	448,337.4
J	666,193.9	451,046.7	625,010.6	450,987.1
K	666,174.6	453,699.9	624,991.5	453,640.3
L	666,154.8	456,352.9	624,971.7	456,293.2

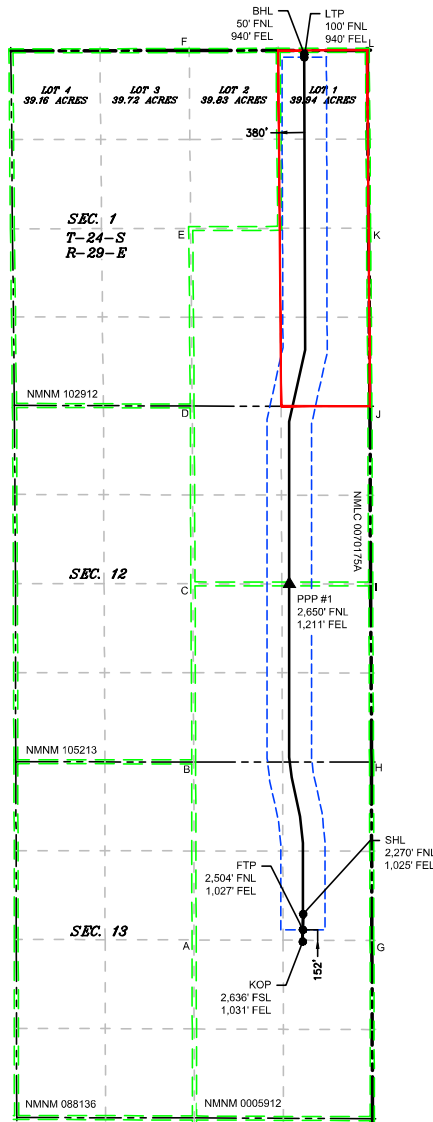


ACREAGE DEDICATION PLATS

This grid represents a standard section. You may superimpose a non-standard section, or larger area, over this grid. Operators must outline the dedicated areage in a red box, clearly show the well surface location and bottom hole location, if it is directionally drilled, with the dimensions from the section lines in the cardinal directions. If this is a horizontal wellbore show on this plat the location of the First Take Point and Last Take Point, and the point within the completed interval (other than the First Take Point or Last Take Point) that is closest to any outer boundary of the tract.

Surveyors shall use the latest United States government survey or dependent resurvey. Well Locations will be in reference to the New Mexico Principal Meridian. If the land is not surveyed, contact the OCD Engineering Bureau. Independent subdivision surveys will not be accepted.

V:\618.013\_XTO Energy - NM\003\_Poker Lake Unit\04 - 13-1,13-24 PC - EDDY Wells\26 - PLU Pierce Canyon 13-24 707H\DWG\13-24 PC 707H.dwg



LEGEND

- SECTION LINE
- TOWNSHIP LINE
- DEDICATED ACREAGE
- 330' BUFFER
- MINERAL LEASE
- WELL BORE
- ▲ PPP
- WELL

WELL COORDINATE TABLE								
WELL	NAD 83 NME X	NAD 83 NME Y	NAD 83 LAT	NAD 83 LON	NAD 27 NME X	NAD 27 NME Y	NAD 27 LAT	NAD 27 LON
SHL	665,198.4	443,477.2	32.218561	-103.932815	624,014.9	443,417.9	32.218437	-103.932326
KOP	665,193.4	443,069.2	32.217440	-103.932836	624,009.9	443,009.9	32.217315	-103.932347
FTP	665,196.7	443,242.7	32.217916	-103.932823	624,013.2	443,183.3	32.217792	-103.932335
LTP	665,215.5	456,250.8	32.253673	-103.932606	624,032.4	456,191.1	32.253549	-103.932115
BHL	665,215.1	456,300.8	32.253811	-103.932606	624,032.0	456,241.1	32.253687	-103.932116
PPP #1	664,993.7	448,398.3	32.232090	-103.933418	623,810.3	448,338.8	32.231966	-103.932928

CORNER COORDINATE TABLE				
CORNER	NAD 83 NME X	NAD 83 NME Y	NAD 27 NME X	NAD 27 NME Y
A	663,576.0	443,093.9	622,392.5	443,034.6
B	663,570.2	445,748.2	622,386.8	445,688.8
C	663,559.1	448,399.9	622,375.8	448,340.4
D	663,547.9	451,051.0	622,364.7	450,991.4
E	663,524.5	453,696.5	622,341.4	453,636.9
F	663,501.0	456,347.1	622,318.0	456,287.4
G	666,224.6	443,088.1	625,041.0	443,028.8
H	666,218.3	445,746.5	625,034.9	445,687.1
I	666,205.3	448,396.9	625,022.0	448,337.4
J	666,193.9	451,046.7	625,010.6	450,987.1
K	666,174.6	453,699.9	624,991.5	453,640.3
L	666,154.8	456,352.9	624,971.7	456,293.2

Sante Fe Main Office  
Phone: (505) 476-3441

General Information  
Phone: (505) 629-6116

Online Phone Directory  
<https://www.emnrd.nm.gov/ocd/contact-us>

**State of New Mexico**  
**Energy, Minerals and Natural Resources**  
**Oil Conservation Division**  
**1220 S. St Francis Dr.**  
**Santa Fe, NM 87505**

CONDITIONS

Action 543957

**CONDITIONS**

Operator: XTO PERMIAN OPERATING LLC. 3617 Big Spring St. MIDLAND, TX 79705	OGRID: 373075
	Action Number: 543957
	Action Type: [C-103] NOI Change of Plans (C-103A)

**CONDITIONS**

Created By	Condition	Condition Date
ward.rikala	Correct one pool. Please see C-102's.	2/17/2026