

Sante Fe Main Office  
Phone: (505) 476-3441

General Information  
Phone: (505) 629-6116

Online Phone Directory  
<https://www.emnrd.nm.gov/ocd/contact-us>

**State of New Mexico**  
**Energy, Minerals and Natural Resources**  
**Oil Conservation Division**  
**1220 S. St Francis Dr.**  
**Santa Fe, NM 87505**

Form C-101  
August 1, 2011  
Permit 409633

**APPLICATION FOR PERMIT TO DRILL, RE-ENTER, DEEPEN, PLUGBACK, OR ADD A ZONE**

1. Operator Name and Address MARATHON OIL PERMIAN LLC 600 W Illinois Ave Midland, TX 79701		2. OGRID Number 372098
4. Property Code 338864		3. API Number 30-015-57893
5. Property Name Campana State Com		6. Well No. 901H

**7. Surface Location**

UL - Lot A	Section 2	Township 24S	Range 26E	Lot Idn 1	Feet From 1302	N/S Line N	Feet From 440	E/W Line E	County Eddy
---------------	--------------	-----------------	--------------	--------------	-------------------	---------------	------------------	---------------	----------------

**8. Proposed Bottom Hole Location**

UL - Lot D	Section 2	Township 24S	Range 26E	Lot Idn 4	Feet From 380	N/S Line N	Feet From 200	E/W Line W	County Eddy
---------------	--------------	-----------------	--------------	--------------	------------------	---------------	------------------	---------------	----------------

**9. Pool Information**

PURPLE SAGE;WOLFCAMP (GAS)	98220
----------------------------	-------

**Additional Well Information**

11. Work Type New Well	12. Well Type GAS	13. Cable/Rotary	14. Lease Type State	15. Ground Level Elevation 3267
16. Multiple N	17. Proposed Depth 14051	18. Formation Wolfcamp	19. Contractor	20. Spud Date 3/2/2026
Depth to Ground water		Distance from nearest fresh water well		Distance to nearest surface water

We will be using a closed-loop system in lieu of lined pits

**21. Proposed Casing and Cement Program**

Type	Hole Size	Casing Size	Casing Weight/ft	Setting Depth	Sacks of Cement	Estimated TOC
Surf	14.75	10.75	40	300	140	0
Int1	9.875	8.625	32	9180	950	0
Prod	7.875	5.5	20	14051	1100	8680

**Casing/Cement Program: Additional Comments**

Drill 14-3/4" hole to ~300' w/ fresh water spud mud. Run 10-3/4" 40# J55 BTC casing to TD and cement to surface in one stage. Drill 9-7/8" hole to ~9,180' with cut brine WBM. Run 8-5/8" 32# P110 W441 casing to TD and cement to surface in one stage. Drill 7-7/8" vertical hole, curve & lateral to 14,051' with OBM. Run 5-1/2" 20# P110 BTC casing to TD and cement to 8,680' in one stage.

**22. Proposed Blowout Prevention Program**

Type	Working Pressure	Test Pressure	Manufacturer
Double Ram	5000	5000	StreamFlo

23. I hereby certify that the information given above is true and complete to the best of my knowledge and belief. I hereby certify that no additives containing PFAS chemicals will be added to the completion or recompletion of this well. I further certify I have complied with 19.15.14.9 (A) NMAC <input checked="" type="checkbox"/> and/or 19.15.14.9 (B) NMAC <input checked="" type="checkbox"/> if applicable.  Signature:	<b>OIL CONSERVATION DIVISION</b>	
	Printed Name: Electronically filed by Robyn M Russell	Approved By: Jeffrey Harrison
	Title: Regulatory Supervisor	Title: Petroleum Specialist III
	Email Address: Robyn.M.Russell@conocophillips.com	Approved Date: 2/25/2026      Expiration Date: 2/25/2028
Date: 2/23/2026	Phone: 432-685-4385	Conditions of Approval Attached

<b>C-102</b>  Submit Electronically Via OCD Permitting	State of New Mexico Energy, Minerals & Natural Resources Department <b>OIL CONSERVATION DIVISION</b>	Revised July 9, 2024
		Submittal Type: <input checked="" type="checkbox"/> Initial Submittal <input type="checkbox"/> Amended Report <input type="checkbox"/> As Drilled

WELL LOCATION INFORMATION

API Number <b>30-015- 57893</b>	Pool Code <b>98220</b>	Pool Name <b>Purple Sage; Wolfcamp (Gas)</b>
Property Code <b>338864</b>	Property Name <b>CAMPANA STATE COM</b>	
OGRID No. <b>372098</b>	Operator Name <b>MARATHON OIL PERMIAN LLC</b>	Well Number <b>901H</b>
Surface Owner: <input checked="" type="checkbox"/> State <input type="checkbox"/> Fee <input type="checkbox"/> Tribal <input type="checkbox"/> Federal		Mineral Owner: <input checked="" type="checkbox"/> State <input type="checkbox"/> Fee <input type="checkbox"/> Tribal <input type="checkbox"/> Federal

Surface Location

UL	Section	Township	Range	Lot	Ft. from N/S	Ft. from E/W	Latitude	Longitude	County
	<b>2</b>	<b>24S</b>	<b>26E</b>	<b>LOT 1</b>	<b>1,302' FNL</b>	<b>440' FEL</b>	<b>32.250040°</b>	<b>-104.256597°</b>	<b>EDDY</b>

Bottom Hole Location

UL	Section	Township	Range	Lot	Ft. from N/S	Ft. from E/W	Latitude	Longitude	County
	<b>2</b>	<b>24S</b>	<b>26E</b>	<b>LOT 4</b>	<b>380' FNL</b>	<b>200' FWL</b>	<b>32.252511°</b>	<b>-104.271713°</b>	<b>EDDY</b>

Dedicated Acres <b>320.32</b>	Infill or Defining Well <b>Infill</b>	Defining Well API <b>Pending 701H</b>	Overlapping Spacing Unit (Y/N) <b>N</b>	Consolidation Code <b>N/A</b>
Order Numbers.			Well setbacks are under Common Ownership: <input checked="" type="checkbox"/> Yes <input type="checkbox"/> No	

Kick Off Point (KOP)

UL	Section	Township	Range	Lot	Ft. from N/S	Ft. from E/W	Latitude	Longitude	County
	<b>2</b>	<b>24S</b>	<b>26E</b>	<b>LOT 1</b>	<b>1,302' FNL</b>	<b>440' FEL</b>	<b>32.250040°</b>	<b>-104.256597°</b>	<b>EDDY</b>


First Take Point (FTP)

UL	Section	Township	Range	Lot	Ft. from N/S	Ft. from E/W	Latitude	Longitude	County
	<b>2</b>	<b>24S</b>	<b>26E</b>	<b>LOT 1</b>	<b>380' FNL</b>	<b>330' FEL</b>	<b>32.252576°</b>	<b>-104.256213°</b>	<b>EDDY</b>

Last Take Point (LTP)

UL	Section	Township	Range	Lot	Ft. from N/S	Ft. from E/W	Latitude	Longitude	County
	<b>2</b>	<b>24S</b>	<b>26E</b>	<b>LOT 4</b>	<b>380' FNL</b>	<b>330' FWL</b>	<b>32.252513°</b>	<b>-104.271292°</b>	<b>EDDY</b>

Unitized Area or Area of Uniform Interest <b>COM</b>	Spacing Unit Type <input checked="" type="checkbox"/> Horizontal <input type="checkbox"/> Vertical	Ground Floor Elevation: <b>3,267'</b>
---	--	--

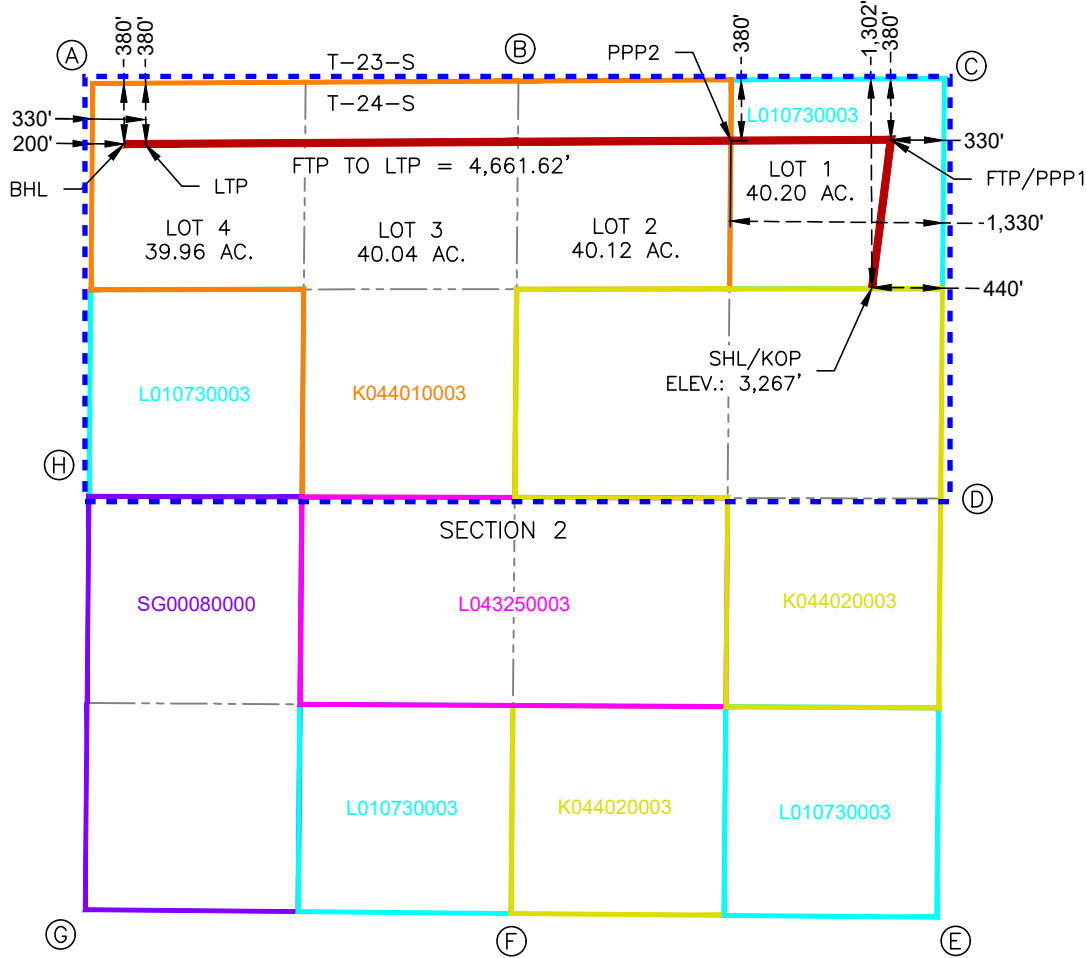
<p><b>OPERATOR CERTIFICATIONS</b></p> <p>I hereby certify that the information contained herein is true and complete to the best of my knowledge and belief, and, if the well is a vertical or directional well, that this organization either owns a working interest or unleased mineral interest in the land including the proposed bottom hole location or has a right to drill this well at this location pursuant to a contract with an owner of a working interest or unleased mineral interest, or to a voluntary pooling agreement or a compulsory pooling order heretofore entered by the division.</p> <p>If this well is a horizontal well, I further certify that this organization has received the consent of at least one lessee or owner of a working interest or unleased mineral interest in each tract (in the target pool or formation) in which any part of the well's completed interval will be located or obtained a compulsory pooling order from the division.</p>	<p><b>SURVEYOR CERTIFICATIONS</b></p> <p>I hereby certify that the well location shown on this plat was plotted from field notes of actual surveys made by me or under my supervision, and that the same is true and correct to the best of my belief.</p> <div style="text-align: center;">  </div> <p style="text-align: right; color: red;">Date: 2/10/2026</p>		
Signature <i>Mayte Reyes</i> Date <b>2/19/2026</b>	Signature and Seal of Professional Surveyor		
Printed Name <b>Mayte Reyes</b>	Certificate Number <b>12177</b>	Date of Survey <b>2/10/2026</b>	Revision Number <b>1</b>
Email Address <b>mayte.x.reyes@conocophillips.com</b>			

Note: No allowable will be assigned to this completion until all interests have been consolidated or a non-standard unit has been approved by the division.

ACREAGE DEDICATION PLATS

This grid represents a standard section. You may superimpose a non-standard section, or larger area, over this grid. Operators must outline the dedicated acreage in a red box, clearly show the well surface location and bottom hole location, if it is directionally drilled, with the dimensions from the section lines in the cardinal directions. If this is a horizontal wellbore show on this plat the location of the First Take Point and Last Take Point, and the point within the Completed interval (other than the First Take Point or Last Take Point) that is closest to any outer boundary of the tract.

Surveyors shall use the latest United States government survey or dependent resurvey. Well locations will be in reference to the New Mexico Principal Meridian. If the land is not surveyed, contact the OCD Engineering Bureau. Independent subdivision surveys will not be acceptable.



**CAMPANA STATE COM 901H**

**SURFACE HOLE LOCATION & KICK-OFF POINT**  
 1,302' FNL & 440' FEL  
 ELEV. = 3,267'  
 NAD 83 X = 565,060.01'  
 NAD 83 Y = 454,706.34'  
 NAD 83 LAT = 32.250040°  
 NAD 83 LONG = -104.256597°

**FIRST TAKE POINT & PENETRATION POINT 1**  
 380' FNL & 330' FEL  
 NAD 83 X = 565,178.22'  
 NAD 83 Y = 455,629.01'  
 NAD 83 LAT = 32.252576°  
 NAD 83 LONG = -104.256213°

**PENETRATION POINT 2**  
 380' FNL & 1,330' FEL  
 NAD 83 X = 564,177.82'  
 NAD 83 Y = 455,623.45'  
 NAD 83 LAT = 32.252563°  
 NAD 83 LONG = -104.259449°

**LAST TAKE POINT**  
 380' FNL & 330' FWL  
 NAD 83 X = 560,516.67'  
 NAD 83 Y = 455,603.13'  
 NAD 83 LAT = 32.252513°  
 NAD 83 LONG = -104.271292°

**BOTTOM HOLE LOCATION**  
 380' FNL & 200' FWL  
 NAD 83 X = 560,386.66'  
 NAD 83 Y = 455,602.40'  
 NAD 83 LAT = 32.252511°  
 NAD 83 LONG = -104.271713°

CORNER COORDINATES NEW MEXICO EAST - NAD 83	
POINT	NORTHING/EASTING
A	N:455,981.28' E:560,190.11'
B	N:455,996.05' E:562,850.83'
C	N:456,010.87' E:565,511.63'
D	N:453,387.12' E:565,488.29'
E	N:450,771.40' E:565,465.11'
F	N:450,795.03' E:562,803.62'
G	N:450,818.60' E:560,142.24'
H	N:453,401.31' E:560,166.56'

Sante Fe Main Office  
Phone: (505) 476-3441

General Information  
Phone: (505) 629-6116

Online Phone Directory  
<https://www.emnrd.nm.gov/ocd/contact-us>

**State of New Mexico**  
**Energy, Minerals and Natural Resources**  
**Oil Conservation Division**  
**1220 S. St Francis Dr.**  
**Santa Fe, NM 87505**

Form APD Comments

Permit 409633

**PERMIT COMMENTS**

Operator Name and Address: MARATHON OIL PERMIAN LLC [372098] 600 W Illinois Ave Midland, TX 79701		API Number: 30-015-57893
		Well: Campana State Com #901H
Created By	Comment	Comment Date
jeffrey.harrison	Infill to 30-015-57891 CAMPANA STATE COM #701H.	2/25/2026

Sante Fe Main Office  
Phone: (505) 476-3441

General Information  
Phone: (505) 629-6116

Online Phone Directory  
<https://www.emnrd.nm.gov/ocd/contact-us>

**State of New Mexico**  
**Energy, Minerals and Natural Resources**  
**Oil Conservation Division**  
**1220 S. St Francis Dr.**  
**Santa Fe, NM 87505**

Form APD Conditions

Permit 409633

**PERMIT CONDITIONS OF APPROVAL**

Operator Name and Address: MARATHON OIL PERMIAN LLC [372098] 600 W Illinois Ave Midland, TX 79701	API Number: 30-015-57893
	Well: Campana State Com #901H

OCD Reviewer	Condition
jeffrey.harrison	No additives containing PFAS chemicals will be added to the drilling fluids or completion fluids used during drilling, completions, or recompletions operations.
jeffrey.harrison	Surface casing shall be set a minimum of 25' into the Rustler Anhydrite, above the salt, and below usable fresh water and cemented to the surface. If salt is encountered set casing at least 25 ft. above the salt.
jeffrey.harrison	Cement is required to circulate on both surface and intermediate1 strings of casing.
jeffrey.harrison	If the method of isolation was not by circulation, a CBL must be performed; if strata isolation is not achieved, then remediation will be required before further operations.
jeffrey.harrison	File As Drilled C-102 and a directional Survey with C-104 completion packet.
jeffrey.harrison	Notify the OCD 24 hours prior to casing & cement.
jeffrey.harrison	A [C-103] Sub. Drilling (C-103N) is required within (10) days of spud.
jeffrey.harrison	Once the well is spud, to prevent ground water contamination through whole or partial conduits from the surface, the operator shall drill without interruption through the fresh water zone or zones and shall immediately set in cement the water protection string.
jeffrey.harrison	Oil base muds are not to be used until fresh water zones are cased and cemented providing isolation from the oil or diesel. This includes synthetic oils. Oil based mud, drilling fluids and solids must be contained in a steel closed loop system.

**MARATHON OIL PERMIAN LLC**  
**HYDROGEN SULFIDE DRILLING OPERATIONS PLAN**

**1. HYDROGEN SULFIDE TRAINING**

All personnel, whether regularly assigned, contracted, or employed on an unscheduled basis, will receive training from a qualified instructor in the following areas prior to commencing drilling operations on this well:

- a. The hazards and characteristics of hydrogen sulfide (H<sub>2</sub>S).
- b. The proper use and maintenance of personal protective equipment and life support systems.
- c. The proper use of H<sub>2</sub>S detectors, alarms, warning systems, briefing areas, evacuation procedures, and prevailing winds.
- d. The proper techniques for first aid and rescue procedures.

In addition, supervisory personnel will be trained in the following areas:

- a. The effects of H<sub>2</sub>S on metal components. If high tensile tubulars are to be used, personnel will be trained in their special maintenance requirements.
- b. Corrective action and shut-in procedures when drilling or reworking a well and blowout prevention and well control procedures.
- c. The contents and requirements of the H<sub>2</sub>S Drilling Operations Plan and the Public Protection Plan.

There will be an initial training session just prior to encountering a known or probable H<sub>2</sub>S zone (within 3 days or 500 feet) and weekly H<sub>2</sub>S and well control drills for all personnel in each crew. The initial training session shall include a review of the site specific H<sub>2</sub>S Drilling Operations Plan and the Public Protection Plan. This plan shall be available at the well site. All personnel will be required to carry documentation that they have received the proper training.

**2. H<sub>2</sub>S SAFETY EQUIPMENT AND SYSTEMS**

Note: All H<sub>2</sub>S safety equipment and systems will be installed, tested, and operational when drilling reaches a depth of 500 feet above, or three days prior to penetrating the first zone containing or reasonably expected to contain H<sub>2</sub>S. If H<sub>2</sub>S greater than 100 ppm is encountered in the gas stream we will shut in and install H<sub>2</sub>S equipment.

- a. Well Control Equipment:
  - Flare line.
  - Choke manifold with remotely operated choke.
  - Blind rams and pipe rams to accommodate all pipe sizes with properly sized closing unit.
  - Auxiliary equipment to include: annular preventer, mud-gas separator, rotating head.

- b. Protective equipment for essential personnel:  
Mark II Surviveair 30-minute units located in the dog house and at briefing areas.
- c. H2S detection and monitoring equipment:  
2 - portable H2S monitor positioned on location for best coverage and response. These units have warning lights and audible sirens when H2S levels of 20 ppm are reached.
- d. Visual warning systems:  
Caution/Danger signs shall be posted on roads providing direct access to location. Signs will be painted a high visibility yellow with black lettering of sufficient size to be readable at a reasonable distance from the immediate location. Bilingual signs will be used, when appropriate. See example attached.
- e. Mud Program:  
The mud program has been designed to minimize the volume of H2S circulated to the surface.
- f. Metallurgy:  
All drill strings, casings, tubing, wellhead, blowout preventers, drilling spool, kill lines, choke manifold and lines, and valves shall be suitable for H2S service.
- g. Communication:  
Company vehicles equipped with cellular telephone.

MARATHON OIL PERMIAN LLC has conducted a review to determine if an H2S contingency plan is required for the above referenced well. We were able to conclude that any potential hazardous volume would be minimal. H2S concentrations of wells in this area from surface to TD are low enough; therefore, we do not believe that an H2S contingency plan is necessary.

# **W A R N I N G**

**YOU ARE ENTERING AN H<sub>2</sub>S AREA  
AUTHORIZED PERSONNEL ONLY**

- 1. BEARDS OR CONTACT LENSES NOT ALLOWED**
- 2. HARD HATS REQUIRED**
- 3. SMOKING IN DESIGNATED AREAS ONLY**
- 4. BE WIND CONSCIOUS AT ALL TIMES**
- 5. CK WITH MARATHON OIL PERMIAN LLC FOREMAN AT MAIN OFFICE**

MARATHON OIL PERMIAN LLC

1-575-748-6940

## EMERGENCY CALL LIST

	<u>OFFICE</u>	<u>MOBILE</u>
MARATHON OIL PERMIAN LLC	575-748-6940	
CHAD GREGORY	432-683-7443	432-238-5840
KEVIN HAMMONS	432-688-6643	337-962-8823

## EMERGENCY RESPONSE NUMBERS

	<u>OFFICE</u>
STATE POLICE	575-748-9718
EDDY COUNTY SHERIFF	575-746-2701
EMERGENCY MEDICAL SERVICES (AMBULANCE)	911 or 575-746-2701
EDDY COUNTY EMERGENCY MANAGEMENT (HARRY BURGESS)	575-887-9511
STATE EMERGENCY RESPONSE CENTER (SERC)	575-476-9620
CARLSBAD POLICE DEPARTMENT	575-885-2111
CARLSBAD FIRE DEPARTMENT	575-885-3125
NEW MEXICO OIL CONSERVATION DIVISION	575-748-1283
INDIAN FIRE & SAFETY	800-530-8693
HALLIBURTON SERVICES	800-844-8451

# **DELAWARE BASIN WEST**

**EDDY COUNTY \_DBW\_NM\_E**

**CAMPANA STATE PROJECT**

**\_CAMPANA FED COM 901H - Slot EAST SLOT 1**

**OWB**

**Plan: PWP0**

## **Standard Planning Report**

**13 February, 2026**

**ConocoPhillips**  
Planning Report

<b>Database:</b>	EDT 17 Permian Prod	<b>Local Co-ordinate Reference:</b>	Well _ CAMPANA FED COM 901H - Slot EAST SLOT 1
<b>Company:</b>	DELAWARE BASIN WEST	<b>TVD Reference:</b>	GL @ 3210.00usft
<b>Project:</b>	EDDY COUNTY_DBW_NM_E	<b>MD Reference:</b>	GL @ 3210.00usft
<b>Site:</b>	CAMPANA STATE PROJECT	<b>North Reference:</b>	Grid
<b>Well:</b>	_CAMPANA FED COM 901H	<b>Survey Calculation Method:</b>	Minimum Curvature
<b>Wellbore:</b>	OWB		
<b>Design:</b>	PWP0		

<b>Project</b>	EDDY COUNTY_DBW_NM_E		
<b>Map System:</b>	US State Plane 1927 (Exact solution)	<b>System Datum:</b>	Mean Sea Level
<b>Geo Datum:</b>	NAD 1927 (NADCON CONUS)		
<b>Map Zone:</b>	New Mexico East 3001		

<b>Site</b>	CAMPANA STATE PROJECT				
<b>Site Position:</b>		<b>Northing:</b>	454,708.16 usft	<b>Latitude:</b>	32° 15' 0.324 N
<b>From:</b>	Map	<b>Easting:</b>	521,821.04 usft	<b>Longitude:</b>	104° 15' 45.898 W
<b>Position Uncertainty:</b>	0.00 usft	<b>Slot Radius:</b>	13-3/16 "		

<b>Well</b>	_CAMPANA FED COM 901H - Slot EAST SLOT 1					
<b>Well Position</b>	<b>+N/-S</b>	0.00 usft	<b>Northing:</b>	454,637.46 usft	<b>Latitude:</b>	32° 14' 59.610 N
	<b>+E/-W</b>	0.00 usft	<b>Easting:</b>	523,874.30 usft	<b>Longitude:</b>	104° 15' 21.989 W
<b>Position Uncertainty</b>	0.00 usft		<b>Wellhead Elevation:</b>	usft	<b>Ground Level:</b>	3,210.00 usft
<b>Grid Convergence:</b>	0.04 °					

<b>Wellbore</b>	OWB				
<b>Magnetics</b>	<b>Model Name</b>	<b>Sample Date</b>	<b>Declination (°)</b>	<b>Dip Angle (°)</b>	<b>Field Strength (nT)</b>
	BGGM2025	2/13/2026	6.75	59.77	47,023.37679184

<b>Design</b>	PWP0			
<b>Audit Notes:</b>				
<b>Version:</b>	<b>Phase:</b>	PLAN	<b>Tie On Depth:</b>	0.00
<b>Vertical Section:</b>	<b>Depth From (TVD) (usft)</b>	<b>+N/-S (usft)</b>	<b>+E/-W (usft)</b>	<b>Direction (°)</b>
	0.00	0.00	0.00	280.73

<b>Plan Survey Tool Program</b>	<b>Date</b>	2/13/2026		
<b>Depth From (usft)</b>	<b>Depth To (usft)</b>	<b>Survey (Wellbore)</b>	<b>Tool Name</b>	<b>Remarks</b>
1	0.00	14,050.81 PWP0 (OWB)	r.5 MWD+IFR1 OWSG MWD + IFR1 rev.5	

**ConocoPhillips**

Planning Report

<b>Database:</b>	EDT 17 Permian Prod	<b>Local Co-ordinate Reference:</b>	Well _ CAMPANA FED COM 901H - Slot EAST SLOT 1
<b>Company:</b>	DELAWARE BASIN WEST	<b>TVD Reference:</b>	GL @ 3210.00usft
<b>Project:</b>	EDDY COUNTY_DBW_NM_E	<b>MD Reference:</b>	GL @ 3210.00usft
<b>Site:</b>	CAMPANA STATE PROJECT	<b>North Reference:</b>	Grid
<b>Well:</b>	_CAMPANA FED COM 901H	<b>Survey Calculation Method:</b>	Minimum Curvature
<b>Wellbore:</b>	OWB		
<b>Design:</b>	PWP0		

Plan Sections										
Measured Depth (usft)	Inclination (°)	Azimuth (°)	Vertical Depth (usft)	+N/-S (usft)	+E/-W (usft)	Dogleg Rate (°/100usft)	Build Rate (°/100usft)	Turn Rate (°/100usft)	TFO (°)	Target
0.00	0.00	0.00	0.00	0.00	0.00	0.00	0.00	0.00	0.00	
2,000.00	0.00	0.00	2,000.00	0.00	0.00	0.00	0.00	0.00	0.00	
2,502.29	10.05	6.77	2,499.72	43.61	5.18	2.00	2.00	0.00	6.77	
7,073.21	10.05	6.77	7,000.56	835.38	99.19	0.00	0.00	0.00	0.00	
8,077.79	0.00	0.00	8,000.00	922.61	109.55	1.00	-1.00	0.00	180.00	
9,000.33	0.00	0.00	8,922.54	922.61	109.55	0.00	0.00	0.00	0.00	
9,750.33	90.00	269.54	9,400.01	918.80	-367.90	12.00	12.00	-12.06	269.54	
14,050.81	90.00	269.54	9,400.00	884.48	-4,668.25	0.00	0.00	0.00	0.00	

### ConocoPhillips

#### Planning Report

<b>Database:</b>	EDT 17 Permian Prod	<b>Local Co-ordinate Reference:</b>	Well _ CAMPANA FED COM 901H - Slot EAST SLOT 1
<b>Company:</b>	DELAWARE BASIN WEST	<b>TVD Reference:</b>	GL @ 3210.00usft
<b>Project:</b>	EDDY COUNTY _DBW_ NM_E	<b>MD Reference:</b>	GL @ 3210.00usft
<b>Site:</b>	CAMPANA STATE PROJECT	<b>North Reference:</b>	Grid
<b>Well:</b>	_CAMPANA FED COM 901H	<b>Survey Calculation Method:</b>	Minimum Curvature
<b>Wellbore:</b>	OWB		
<b>Design:</b>	PWP0		

Planned Survey										
Measured Depth (usft)	Inclination (°)	Azimuth (°)	Vertical Depth (usft)	+N/-S (usft)	+E/-W (usft)	Vertical Section (usft)	Dogleg Rate (°/100usft)	Build Rate (°/100usft)	Turn Rate (°/100usft)	
0.00	0.00	0.00	0.00	0.00	0.00	0.00	0.00	0.00	0.00	
15.00	0.00	0.00	15.00	0.00	0.00	0.00	0.00	0.00	0.00	
30.00	0.00	0.00	30.00	0.00	0.00	0.00	0.00	0.00	0.00	
45.00	0.00	0.00	45.00	0.00	0.00	0.00	0.00	0.00	0.00	
60.00	0.00	0.00	60.00	0.00	0.00	0.00	0.00	0.00	0.00	
75.00	0.00	0.00	75.00	0.00	0.00	0.00	0.00	0.00	0.00	
90.00	0.00	0.00	90.00	0.00	0.00	0.00	0.00	0.00	0.00	
105.00	0.00	0.00	105.00	0.00	0.00	0.00	0.00	0.00	0.00	
120.00	0.00	0.00	120.00	0.00	0.00	0.00	0.00	0.00	0.00	
135.00	0.00	0.00	135.00	0.00	0.00	0.00	0.00	0.00	0.00	
150.00	0.00	0.00	150.00	0.00	0.00	0.00	0.00	0.00	0.00	
165.00	0.00	0.00	165.00	0.00	0.00	0.00	0.00	0.00	0.00	
180.00	0.00	0.00	180.00	0.00	0.00	0.00	0.00	0.00	0.00	
195.00	0.00	0.00	195.00	0.00	0.00	0.00	0.00	0.00	0.00	
210.00	0.00	0.00	210.00	0.00	0.00	0.00	0.00	0.00	0.00	
225.00	0.00	0.00	225.00	0.00	0.00	0.00	0.00	0.00	0.00	
240.00	0.00	0.00	240.00	0.00	0.00	0.00	0.00	0.00	0.00	
255.00	0.00	0.00	255.00	0.00	0.00	0.00	0.00	0.00	0.00	
270.00	0.00	0.00	270.00	0.00	0.00	0.00	0.00	0.00	0.00	
285.00	0.00	0.00	285.00	0.00	0.00	0.00	0.00	0.00	0.00	
300.00	0.00	0.00	300.00	0.00	0.00	0.00	0.00	0.00	0.00	
315.00	0.00	0.00	315.00	0.00	0.00	0.00	0.00	0.00	0.00	
330.00	0.00	0.00	330.00	0.00	0.00	0.00	0.00	0.00	0.00	
345.00	0.00	0.00	345.00	0.00	0.00	0.00	0.00	0.00	0.00	
360.00	0.00	0.00	360.00	0.00	0.00	0.00	0.00	0.00	0.00	
375.00	0.00	0.00	375.00	0.00	0.00	0.00	0.00	0.00	0.00	
390.00	0.00	0.00	390.00	0.00	0.00	0.00	0.00	0.00	0.00	
405.00	0.00	0.00	405.00	0.00	0.00	0.00	0.00	0.00	0.00	
420.00	0.00	0.00	420.00	0.00	0.00	0.00	0.00	0.00	0.00	
435.00	0.00	0.00	435.00	0.00	0.00	0.00	0.00	0.00	0.00	
450.00	0.00	0.00	450.00	0.00	0.00	0.00	0.00	0.00	0.00	
465.00	0.00	0.00	465.00	0.00	0.00	0.00	0.00	0.00	0.00	
480.00	0.00	0.00	480.00	0.00	0.00	0.00	0.00	0.00	0.00	
495.00	0.00	0.00	495.00	0.00	0.00	0.00	0.00	0.00	0.00	
510.00	0.00	0.00	510.00	0.00	0.00	0.00	0.00	0.00	0.00	
525.00	0.00	0.00	525.00	0.00	0.00	0.00	0.00	0.00	0.00	
540.00	0.00	0.00	540.00	0.00	0.00	0.00	0.00	0.00	0.00	
555.00	0.00	0.00	555.00	0.00	0.00	0.00	0.00	0.00	0.00	
570.00	0.00	0.00	570.00	0.00	0.00	0.00	0.00	0.00	0.00	
585.00	0.00	0.00	585.00	0.00	0.00	0.00	0.00	0.00	0.00	
600.00	0.00	0.00	600.00	0.00	0.00	0.00	0.00	0.00	0.00	
615.00	0.00	0.00	615.00	0.00	0.00	0.00	0.00	0.00	0.00	
630.00	0.00	0.00	630.00	0.00	0.00	0.00	0.00	0.00	0.00	
645.00	0.00	0.00	645.00	0.00	0.00	0.00	0.00	0.00	0.00	
660.00	0.00	0.00	660.00	0.00	0.00	0.00	0.00	0.00	0.00	
675.00	0.00	0.00	675.00	0.00	0.00	0.00	0.00	0.00	0.00	
690.00	0.00	0.00	690.00	0.00	0.00	0.00	0.00	0.00	0.00	
705.00	0.00	0.00	705.00	0.00	0.00	0.00	0.00	0.00	0.00	
720.00	0.00	0.00	720.00	0.00	0.00	0.00	0.00	0.00	0.00	
735.00	0.00	0.00	735.00	0.00	0.00	0.00	0.00	0.00	0.00	
750.00	0.00	0.00	750.00	0.00	0.00	0.00	0.00	0.00	0.00	
765.00	0.00	0.00	765.00	0.00	0.00	0.00	0.00	0.00	0.00	
780.00	0.00	0.00	780.00	0.00	0.00	0.00	0.00	0.00	0.00	

### ConocoPhillips

#### Planning Report

<b>Database:</b>	EDT 17 Permian Prod	<b>Local Co-ordinate Reference:</b>	Well _ CAMPANA FED COM 901H - Slot EAST SLOT 1
<b>Company:</b>	DELAWARE BASIN WEST	<b>TVD Reference:</b>	GL @ 3210.00usft
<b>Project:</b>	EDDY COUNTY _DBW_ NM_E	<b>MD Reference:</b>	GL @ 3210.00usft
<b>Site:</b>	CAMPANA STATE PROJECT	<b>North Reference:</b>	Grid
<b>Well:</b>	_CAMPANA FED COM 901H	<b>Survey Calculation Method:</b>	Minimum Curvature
<b>Wellbore:</b>	OWB		
<b>Design:</b>	PWP0		

Planned Survey										
Measured Depth (usft)	Inclination (°)	Azimuth (°)	Vertical Depth (usft)	+N/-S (usft)	+E/-W (usft)	Vertical Section (usft)	Dogleg Rate (°/100usft)	Build Rate (°/100usft)	Turn Rate (°/100usft)	
795.00	0.00	0.00	795.00	0.00	0.00	0.00	0.00	0.00	0.00	
810.00	0.00	0.00	810.00	0.00	0.00	0.00	0.00	0.00	0.00	
825.00	0.00	0.00	825.00	0.00	0.00	0.00	0.00	0.00	0.00	
840.00	0.00	0.00	840.00	0.00	0.00	0.00	0.00	0.00	0.00	
855.00	0.00	0.00	855.00	0.00	0.00	0.00	0.00	0.00	0.00	
870.00	0.00	0.00	870.00	0.00	0.00	0.00	0.00	0.00	0.00	
885.00	0.00	0.00	885.00	0.00	0.00	0.00	0.00	0.00	0.00	
900.00	0.00	0.00	900.00	0.00	0.00	0.00	0.00	0.00	0.00	
915.00	0.00	0.00	915.00	0.00	0.00	0.00	0.00	0.00	0.00	
930.00	0.00	0.00	930.00	0.00	0.00	0.00	0.00	0.00	0.00	
945.00	0.00	0.00	945.00	0.00	0.00	0.00	0.00	0.00	0.00	
960.00	0.00	0.00	960.00	0.00	0.00	0.00	0.00	0.00	0.00	
975.00	0.00	0.00	975.00	0.00	0.00	0.00	0.00	0.00	0.00	
990.00	0.00	0.00	990.00	0.00	0.00	0.00	0.00	0.00	0.00	
1,005.00	0.00	0.00	1,005.00	0.00	0.00	0.00	0.00	0.00	0.00	
1,020.00	0.00	0.00	1,020.00	0.00	0.00	0.00	0.00	0.00	0.00	
1,035.00	0.00	0.00	1,035.00	0.00	0.00	0.00	0.00	0.00	0.00	
1,050.00	0.00	0.00	1,050.00	0.00	0.00	0.00	0.00	0.00	0.00	
1,065.00	0.00	0.00	1,065.00	0.00	0.00	0.00	0.00	0.00	0.00	
1,080.00	0.00	0.00	1,080.00	0.00	0.00	0.00	0.00	0.00	0.00	
1,095.00	0.00	0.00	1,095.00	0.00	0.00	0.00	0.00	0.00	0.00	
1,110.00	0.00	0.00	1,110.00	0.00	0.00	0.00	0.00	0.00	0.00	
1,125.00	0.00	0.00	1,125.00	0.00	0.00	0.00	0.00	0.00	0.00	
1,140.00	0.00	0.00	1,140.00	0.00	0.00	0.00	0.00	0.00	0.00	
1,155.00	0.00	0.00	1,155.00	0.00	0.00	0.00	0.00	0.00	0.00	
1,170.00	0.00	0.00	1,170.00	0.00	0.00	0.00	0.00	0.00	0.00	
1,185.00	0.00	0.00	1,185.00	0.00	0.00	0.00	0.00	0.00	0.00	
1,200.00	0.00	0.00	1,200.00	0.00	0.00	0.00	0.00	0.00	0.00	
1,215.00	0.00	0.00	1,215.00	0.00	0.00	0.00	0.00	0.00	0.00	
1,230.00	0.00	0.00	1,230.00	0.00	0.00	0.00	0.00	0.00	0.00	
1,245.00	0.00	0.00	1,245.00	0.00	0.00	0.00	0.00	0.00	0.00	
1,260.00	0.00	0.00	1,260.00	0.00	0.00	0.00	0.00	0.00	0.00	
1,275.00	0.00	0.00	1,275.00	0.00	0.00	0.00	0.00	0.00	0.00	
1,290.00	0.00	0.00	1,290.00	0.00	0.00	0.00	0.00	0.00	0.00	
1,305.00	0.00	0.00	1,305.00	0.00	0.00	0.00	0.00	0.00	0.00	
1,320.00	0.00	0.00	1,320.00	0.00	0.00	0.00	0.00	0.00	0.00	
1,335.00	0.00	0.00	1,335.00	0.00	0.00	0.00	0.00	0.00	0.00	
1,350.00	0.00	0.00	1,350.00	0.00	0.00	0.00	0.00	0.00	0.00	
1,365.00	0.00	0.00	1,365.00	0.00	0.00	0.00	0.00	0.00	0.00	
1,380.00	0.00	0.00	1,380.00	0.00	0.00	0.00	0.00	0.00	0.00	
1,395.00	0.00	0.00	1,395.00	0.00	0.00	0.00	0.00	0.00	0.00	
1,410.00	0.00	0.00	1,410.00	0.00	0.00	0.00	0.00	0.00	0.00	
1,425.00	0.00	0.00	1,425.00	0.00	0.00	0.00	0.00	0.00	0.00	
1,440.00	0.00	0.00	1,440.00	0.00	0.00	0.00	0.00	0.00	0.00	
1,455.00	0.00	0.00	1,455.00	0.00	0.00	0.00	0.00	0.00	0.00	
1,470.00	0.00	0.00	1,470.00	0.00	0.00	0.00	0.00	0.00	0.00	
1,485.00	0.00	0.00	1,485.00	0.00	0.00	0.00	0.00	0.00	0.00	
1,500.00	0.00	0.00	1,500.00	0.00	0.00	0.00	0.00	0.00	0.00	
1,515.00	0.00	0.00	1,515.00	0.00	0.00	0.00	0.00	0.00	0.00	
1,530.00	0.00	0.00	1,530.00	0.00	0.00	0.00	0.00	0.00	0.00	
1,545.00	0.00	0.00	1,545.00	0.00	0.00	0.00	0.00	0.00	0.00	
1,560.00	0.00	0.00	1,560.00	0.00	0.00	0.00	0.00	0.00	0.00	
1,575.00	0.00	0.00	1,575.00	0.00	0.00	0.00	0.00	0.00	0.00	

### ConocoPhillips

#### Planning Report

<b>Database:</b>	EDT 17 Permian Prod	<b>Local Co-ordinate Reference:</b>	Well _CAMPANA FED COM 901H - Slot EAST SLOT 1
<b>Company:</b>	DELAWARE BASIN WEST	<b>TVD Reference:</b>	GL @ 3210.00usft
<b>Project:</b>	EDDY COUNTY_DBW_NM_E	<b>MD Reference:</b>	GL @ 3210.00usft
<b>Site:</b>	CAMPANA STATE PROJECT	<b>North Reference:</b>	Grid
<b>Well:</b>	_CAMPANA FED COM 901H	<b>Survey Calculation Method:</b>	Minimum Curvature
<b>Wellbore:</b>	OWB		
<b>Design:</b>	PWP0		

Planned Survey										
Measured Depth (usft)	Inclination (°)	Azimuth (°)	Vertical Depth (usft)	+N/-S (usft)	+E/-W (usft)	Vertical Section (usft)	Dogleg Rate (°/100usft)	Build Rate (°/100usft)	Turn Rate (°/100usft)	
1,590.00	0.00	0.00	1,590.00	0.00	0.00	0.00	0.00	0.00	0.00	
1,605.00	0.00	0.00	1,605.00	0.00	0.00	0.00	0.00	0.00	0.00	
1,620.00	0.00	0.00	1,620.00	0.00	0.00	0.00	0.00	0.00	0.00	
1,635.00	0.00	0.00	1,635.00	0.00	0.00	0.00	0.00	0.00	0.00	
1,650.00	0.00	0.00	1,650.00	0.00	0.00	0.00	0.00	0.00	0.00	
1,665.00	0.00	0.00	1,665.00	0.00	0.00	0.00	0.00	0.00	0.00	
1,680.00	0.00	0.00	1,680.00	0.00	0.00	0.00	0.00	0.00	0.00	
1,695.00	0.00	0.00	1,695.00	0.00	0.00	0.00	0.00	0.00	0.00	
1,710.00	0.00	0.00	1,710.00	0.00	0.00	0.00	0.00	0.00	0.00	
1,725.00	0.00	0.00	1,725.00	0.00	0.00	0.00	0.00	0.00	0.00	
1,740.00	0.00	0.00	1,740.00	0.00	0.00	0.00	0.00	0.00	0.00	
1,755.00	0.00	0.00	1,755.00	0.00	0.00	0.00	0.00	0.00	0.00	
1,770.00	0.00	0.00	1,770.00	0.00	0.00	0.00	0.00	0.00	0.00	
1,785.00	0.00	0.00	1,785.00	0.00	0.00	0.00	0.00	0.00	0.00	
1,800.00	0.00	0.00	1,800.00	0.00	0.00	0.00	0.00	0.00	0.00	
1,815.00	0.00	0.00	1,815.00	0.00	0.00	0.00	0.00	0.00	0.00	
1,830.00	0.00	0.00	1,830.00	0.00	0.00	0.00	0.00	0.00	0.00	
1,845.00	0.00	0.00	1,845.00	0.00	0.00	0.00	0.00	0.00	0.00	
1,860.00	0.00	0.00	1,860.00	0.00	0.00	0.00	0.00	0.00	0.00	
1,875.00	0.00	0.00	1,875.00	0.00	0.00	0.00	0.00	0.00	0.00	
1,890.00	0.00	0.00	1,890.00	0.00	0.00	0.00	0.00	0.00	0.00	
1,905.00	0.00	0.00	1,905.00	0.00	0.00	0.00	0.00	0.00	0.00	
1,920.00	0.00	0.00	1,920.00	0.00	0.00	0.00	0.00	0.00	0.00	
1,935.00	0.00	0.00	1,935.00	0.00	0.00	0.00	0.00	0.00	0.00	
1,950.00	0.00	0.00	1,950.00	0.00	0.00	0.00	0.00	0.00	0.00	
1,965.00	0.00	0.00	1,965.00	0.00	0.00	0.00	0.00	0.00	0.00	
1,980.00	0.00	0.00	1,980.00	0.00	0.00	0.00	0.00	0.00	0.00	
1,995.00	0.00	0.00	1,995.00	0.00	0.00	0.00	0.00	0.00	0.00	
2,000.00	0.00	0.00	2,000.00	0.00	0.00	0.00	0.00	0.00	0.00	
2,010.00	0.20	6.77	2,010.00	0.02	0.00	0.00	2.00	2.00	0.00	
2,025.00	0.50	6.77	2,025.00	0.11	0.01	0.01	2.00	2.00	0.00	
2,040.00	0.80	6.77	2,040.00	0.28	0.03	0.02	2.00	2.00	0.00	
2,055.00	1.10	6.77	2,055.00	0.52	0.06	0.04	2.00	2.00	0.00	
2,070.00	1.40	6.77	2,069.99	0.85	0.10	0.06	2.00	2.00	0.00	
2,085.00	1.70	6.77	2,084.99	1.25	0.15	0.09	2.00	2.00	0.00	
2,100.00	2.00	6.77	2,099.98	1.73	0.21	0.12	2.00	2.00	0.00	
2,115.00	2.30	6.77	2,114.97	2.29	0.27	0.16	2.00	2.00	0.00	
2,130.00	2.60	6.77	2,129.96	2.93	0.35	0.20	2.00	2.00	0.00	
2,145.00	2.90	6.77	2,144.94	3.64	0.43	0.25	2.00	2.00	0.00	
2,160.00	3.20	6.77	2,159.92	4.44	0.53	0.31	2.00	2.00	0.00	
2,175.00	3.50	6.77	2,174.89	5.31	0.63	0.37	2.00	2.00	0.00	
2,190.00	3.80	6.77	2,189.86	6.25	0.74	0.43	2.00	2.00	0.00	
2,205.00	4.10	6.77	2,204.83	7.28	0.86	0.51	2.00	2.00	0.00	
2,220.00	4.40	6.77	2,219.78	8.38	1.00	0.58	2.00	2.00	0.00	
2,235.00	4.70	6.77	2,234.74	9.57	1.14	0.66	2.00	2.00	0.00	
2,250.00	5.00	6.77	2,249.68	10.83	1.29	0.75	2.00	2.00	0.00	
2,265.00	5.30	6.77	2,264.62	12.16	1.44	0.85	2.00	2.00	0.00	
2,280.00	5.60	6.77	2,279.55	13.58	1.61	0.94	2.00	2.00	0.00	
2,295.00	5.90	6.77	2,294.48	15.07	1.79	1.05	2.00	2.00	0.00	
2,310.00	6.20	6.77	2,309.40	16.64	1.98	1.16	2.00	2.00	0.00	
2,325.00	6.50	6.77	2,324.30	18.29	2.17	1.27	2.00	2.00	0.00	
2,340.00	6.80	6.77	2,339.20	20.01	2.38	1.39	2.00	2.00	0.00	
2,355.00	7.10	6.77	2,354.09	21.81	2.59	1.52	2.00	2.00	0.00	

### ConocoPhillips

#### Planning Report

<b>Database:</b>	EDT 17 Permian Prod	<b>Local Co-ordinate Reference:</b>	Well _ CAMPANA FED COM 901H - Slot EAST SLOT 1
<b>Company:</b>	DELAWARE BASIN WEST	<b>TVD Reference:</b>	GL @ 3210.00usft
<b>Project:</b>	EDDY COUNTY_DBW_NM_E	<b>MD Reference:</b>	GL @ 3210.00usft
<b>Site:</b>	CAMPANA STATE PROJECT	<b>North Reference:</b>	Grid
<b>Well:</b>	_CAMPANA FED COM 901H	<b>Survey Calculation Method:</b>	Minimum Curvature
<b>Wellbore:</b>	OWB		
<b>Design:</b>	PWP0		

Planned Survey										
Measured Depth (usft)	Inclination (°)	Azimuth (°)	Vertical Depth (usft)	+N/-S (usft)	+E/-W (usft)	Vertical Section (usft)	Dogleg Rate (°/100usft)	Build Rate (°/100usft)	Turn Rate (°/100usft)	
2,370.00	7.40	6.77	2,368.97	23.69	2.81	1.65	2.00	2.00	0.00	
2,385.00	7.70	6.77	2,383.84	25.65	3.05	1.78	2.00	2.00	0.00	
2,400.00	8.00	6.77	2,398.70	27.69	3.29	1.92	2.00	2.00	0.00	
2,415.00	8.30	6.77	2,413.55	29.80	3.54	2.07	2.00	2.00	0.00	
2,430.00	8.60	6.77	2,428.39	31.99	3.80	2.22	2.00	2.00	0.00	
2,445.00	8.90	6.77	2,443.21	34.25	4.07	2.38	2.00	2.00	0.00	
2,460.00	9.20	6.77	2,458.03	36.59	4.35	2.54	2.00	2.00	0.00	
2,475.00	9.50	6.77	2,472.83	39.01	4.63	2.71	2.00	2.00	0.00	
2,490.00	9.80	6.77	2,487.61	41.51	4.93	2.88	2.00	2.00	0.00	
2,502.29	10.05	6.77	2,499.72	43.61	5.18	3.03	2.00	2.00	0.00	
2,505.00	10.05	6.77	2,502.39	44.08	5.23	3.06	0.00	0.00	0.00	
2,520.00	10.05	6.77	2,517.16	46.68	5.54	3.24	0.00	0.00	0.00	
2,535.00	10.05	6.77	2,531.93	49.28	5.85	3.42	0.00	0.00	0.00	
2,550.00	10.05	6.77	2,546.70	51.88	6.16	3.61	0.00	0.00	0.00	
2,565.00	10.05	6.77	2,561.47	54.48	6.47	3.79	0.00	0.00	0.00	
2,580.00	10.05	6.77	2,576.24	57.08	6.78	3.97	0.00	0.00	0.00	
2,595.00	10.05	6.77	2,591.01	59.67	7.09	4.15	0.00	0.00	0.00	
2,610.00	10.05	6.77	2,605.78	62.27	7.39	4.33	0.00	0.00	0.00	
2,625.00	10.05	6.77	2,620.55	64.87	7.70	4.51	0.00	0.00	0.00	
2,640.00	10.05	6.77	2,635.32	67.47	8.01	4.69	0.00	0.00	0.00	
2,655.00	10.05	6.77	2,650.09	70.07	8.32	4.87	0.00	0.00	0.00	
2,670.00	10.05	6.77	2,664.86	72.67	8.63	5.05	0.00	0.00	0.00	
2,685.00	10.05	6.77	2,679.63	75.26	8.94	5.23	0.00	0.00	0.00	
2,700.00	10.05	6.77	2,694.40	77.86	9.25	5.41	0.00	0.00	0.00	
2,715.00	10.05	6.77	2,709.17	80.46	9.55	5.59	0.00	0.00	0.00	
2,730.00	10.05	6.77	2,723.94	83.06	9.86	5.77	0.00	0.00	0.00	
2,745.00	10.05	6.77	2,738.71	85.66	10.17	5.95	0.00	0.00	0.00	
2,760.00	10.05	6.77	2,753.48	88.25	10.48	6.13	0.00	0.00	0.00	
2,775.00	10.05	6.77	2,768.25	90.85	10.79	6.31	0.00	0.00	0.00	
2,790.00	10.05	6.77	2,783.02	93.45	11.10	6.49	0.00	0.00	0.00	
2,805.00	10.05	6.77	2,797.79	96.05	11.40	6.67	0.00	0.00	0.00	
2,820.00	10.05	6.77	2,812.56	98.65	11.71	6.86	0.00	0.00	0.00	
2,835.00	10.05	6.77	2,827.33	101.25	12.02	7.04	0.00	0.00	0.00	
2,850.00	10.05	6.77	2,842.10	103.84	12.33	7.22	0.00	0.00	0.00	
2,865.00	10.05	6.77	2,856.87	106.44	12.64	7.40	0.00	0.00	0.00	
2,880.00	10.05	6.77	2,871.64	109.04	12.95	7.58	0.00	0.00	0.00	
2,895.00	10.05	6.77	2,886.41	111.64	13.26	7.76	0.00	0.00	0.00	
2,910.00	10.05	6.77	2,901.18	114.24	13.56	7.94	0.00	0.00	0.00	
2,925.00	10.05	6.77	2,915.95	116.84	13.87	8.12	0.00	0.00	0.00	
2,940.00	10.05	6.77	2,930.72	119.43	14.18	8.30	0.00	0.00	0.00	
2,955.00	10.05	6.77	2,945.49	122.03	14.49	8.48	0.00	0.00	0.00	
2,970.00	10.05	6.77	2,960.26	124.63	14.80	8.66	0.00	0.00	0.00	
2,985.00	10.05	6.77	2,975.03	127.23	15.11	8.84	0.00	0.00	0.00	
3,000.00	10.05	6.77	2,989.80	129.83	15.42	9.02	0.00	0.00	0.00	
3,015.00	10.05	6.77	3,004.57	132.43	15.72	9.20	0.00	0.00	0.00	
3,030.00	10.05	6.77	3,019.34	135.02	16.03	9.38	0.00	0.00	0.00	
3,045.00	10.05	6.77	3,034.11	137.62	16.34	9.56	0.00	0.00	0.00	
3,060.00	10.05	6.77	3,048.88	140.22	16.65	9.74	0.00	0.00	0.00	
3,075.00	10.05	6.77	3,063.65	142.82	16.96	9.92	0.00	0.00	0.00	
3,090.00	10.05	6.77	3,078.42	145.42	17.27	10.11	0.00	0.00	0.00	
3,105.00	10.05	6.77	3,093.19	148.02	17.58	10.29	0.00	0.00	0.00	
3,120.00	10.05	6.77	3,107.96	150.61	17.88	10.47	0.00	0.00	0.00	
3,135.00	10.05	6.77	3,122.73	153.21	18.19	10.65	0.00	0.00	0.00	

### ConocoPhillips

#### Planning Report

<b>Database:</b>	EDT 17 Permian Prod	<b>Local Co-ordinate Reference:</b>	Well _ CAMPANA FED COM 901H - Slot EAST SLOT 1
<b>Company:</b>	DELAWARE BASIN WEST	<b>TVD Reference:</b>	GL @ 3210.00usft
<b>Project:</b>	EDDY COUNTY_DBW_NM_E	<b>MD Reference:</b>	GL @ 3210.00usft
<b>Site:</b>	CAMPANA STATE PROJECT	<b>North Reference:</b>	Grid
<b>Well:</b>	_CAMPANA FED COM 901H	<b>Survey Calculation Method:</b>	Minimum Curvature
<b>Wellbore:</b>	OWB		
<b>Design:</b>	PWP0		

Planned Survey										
Measured Depth (usft)	Inclination (°)	Azimuth (°)	Vertical Depth (usft)	+N/-S (usft)	+E/-W (usft)	Vertical Section (usft)	Dogleg Rate (°/100usft)	Build Rate (°/100usft)	Turn Rate (°/100usft)	
3,150.00	10.05	6.77	3,137.50	155.81	18.50	10.83	0.00	0.00	0.00	
3,165.00	10.05	6.77	3,152.27	158.41	18.81	11.01	0.00	0.00	0.00	
3,180.00	10.05	6.77	3,167.04	161.01	19.12	11.19	0.00	0.00	0.00	
3,195.00	10.05	6.77	3,181.81	163.60	19.43	11.37	0.00	0.00	0.00	
3,210.00	10.05	6.77	3,196.58	166.20	19.73	11.55	0.00	0.00	0.00	
3,225.00	10.05	6.77	3,211.35	168.80	20.04	11.73	0.00	0.00	0.00	
3,240.00	10.05	6.77	3,226.12	171.40	20.35	11.91	0.00	0.00	0.00	
3,255.00	10.05	6.77	3,240.89	174.00	20.66	12.09	0.00	0.00	0.00	
3,270.00	10.05	6.77	3,255.66	176.60	20.97	12.27	0.00	0.00	0.00	
3,285.00	10.05	6.77	3,270.43	179.19	21.28	12.45	0.00	0.00	0.00	
3,300.00	10.05	6.77	3,285.20	181.79	21.59	12.63	0.00	0.00	0.00	
3,315.00	10.05	6.77	3,299.97	184.39	21.89	12.81	0.00	0.00	0.00	
3,330.00	10.05	6.77	3,314.74	186.99	22.20	12.99	0.00	0.00	0.00	
3,345.00	10.05	6.77	3,329.51	189.59	22.51	13.17	0.00	0.00	0.00	
3,360.00	10.05	6.77	3,344.28	192.19	22.82	13.36	0.00	0.00	0.00	
3,375.00	10.05	6.77	3,359.05	194.78	23.13	13.54	0.00	0.00	0.00	
3,390.00	10.05	6.77	3,373.82	197.38	23.44	13.72	0.00	0.00	0.00	
3,405.00	10.05	6.77	3,388.59	199.98	23.75	13.90	0.00	0.00	0.00	
3,420.00	10.05	6.77	3,403.36	202.58	24.05	14.08	0.00	0.00	0.00	
3,435.00	10.05	6.77	3,418.13	205.18	24.36	14.26	0.00	0.00	0.00	
3,450.00	10.05	6.77	3,432.90	207.78	24.67	14.44	0.00	0.00	0.00	
3,465.00	10.05	6.77	3,447.67	210.37	24.98	14.62	0.00	0.00	0.00	
3,480.00	10.05	6.77	3,462.44	212.97	25.29	14.80	0.00	0.00	0.00	
3,495.00	10.05	6.77	3,477.21	215.57	25.60	14.98	0.00	0.00	0.00	
3,510.00	10.05	6.77	3,491.98	218.17	25.91	15.16	0.00	0.00	0.00	
3,525.00	10.05	6.77	3,506.75	220.77	26.21	15.34	0.00	0.00	0.00	
3,540.00	10.05	6.77	3,521.52	223.36	26.52	15.52	0.00	0.00	0.00	
3,555.00	10.05	6.77	3,536.29	225.96	26.83	15.70	0.00	0.00	0.00	
3,570.00	10.05	6.77	3,551.06	228.56	27.14	15.88	0.00	0.00	0.00	
3,585.00	10.05	6.77	3,565.83	231.16	27.45	16.06	0.00	0.00	0.00	
3,600.00	10.05	6.77	3,580.60	233.76	27.76	16.24	0.00	0.00	0.00	
3,615.00	10.05	6.77	3,595.37	236.36	28.06	16.42	0.00	0.00	0.00	
3,630.00	10.05	6.77	3,610.14	238.95	28.37	16.61	0.00	0.00	0.00	
3,645.00	10.05	6.77	3,624.91	241.55	28.68	16.79	0.00	0.00	0.00	
3,660.00	10.05	6.77	3,639.68	244.15	28.99	16.97	0.00	0.00	0.00	
3,675.00	10.05	6.77	3,654.45	246.75	29.30	17.15	0.00	0.00	0.00	
3,690.00	10.05	6.77	3,669.22	249.35	29.61	17.33	0.00	0.00	0.00	
3,705.00	10.05	6.77	3,683.99	251.95	29.92	17.51	0.00	0.00	0.00	
3,720.00	10.05	6.77	3,698.76	254.54	30.22	17.69	0.00	0.00	0.00	
3,735.00	10.05	6.77	3,713.53	257.14	30.53	17.87	0.00	0.00	0.00	
3,750.00	10.05	6.77	3,728.30	259.74	30.84	18.05	0.00	0.00	0.00	
3,765.00	10.05	6.77	3,743.07	262.34	31.15	18.23	0.00	0.00	0.00	
3,780.00	10.05	6.77	3,757.84	264.94	31.46	18.41	0.00	0.00	0.00	
3,795.00	10.05	6.77	3,772.61	267.54	31.77	18.59	0.00	0.00	0.00	
3,810.00	10.05	6.77	3,787.38	270.13	32.08	18.77	0.00	0.00	0.00	
3,825.00	10.05	6.77	3,802.15	272.73	32.38	18.95	0.00	0.00	0.00	
3,840.00	10.05	6.77	3,816.92	275.33	32.69	19.13	0.00	0.00	0.00	
3,855.00	10.05	6.77	3,831.69	277.93	33.00	19.31	0.00	0.00	0.00	
3,870.00	10.05	6.77	3,846.46	280.53	33.31	19.49	0.00	0.00	0.00	
3,885.00	10.05	6.77	3,861.23	283.13	33.62	19.67	0.00	0.00	0.00	
3,900.00	10.05	6.77	3,876.00	285.72	33.93	19.86	0.00	0.00	0.00	
3,915.00	10.05	6.77	3,890.77	288.32	34.24	20.04	0.00	0.00	0.00	
3,930.00	10.05	6.77	3,905.54	290.92	34.54	20.22	0.00	0.00	0.00	

### ConocoPhillips

#### Planning Report

<b>Database:</b>	EDT 17 Permian Prod	<b>Local Co-ordinate Reference:</b>	Well _CAMPANA FED COM 901H - Slot EAST SLOT 1
<b>Company:</b>	DELAWARE BASIN WEST	<b>TVD Reference:</b>	GL @ 3210.00usft
<b>Project:</b>	EDDY COUNTY_DBW_NM_E	<b>MD Reference:</b>	GL @ 3210.00usft
<b>Site:</b>	CAMPANA STATE PROJECT	<b>North Reference:</b>	Grid
<b>Well:</b>	_CAMPANA FED COM 901H	<b>Survey Calculation Method:</b>	Minimum Curvature
<b>Wellbore:</b>	OWB		
<b>Design:</b>	PWP0		

Planned Survey										
Measured Depth (usft)	Inclination (°)	Azimuth (°)	Vertical Depth (usft)	+N/-S (usft)	+E/-W (usft)	Vertical Section (usft)	Dogleg Rate (°/100usft)	Build Rate (°/100usft)	Turn Rate (°/100usft)	
3,945.00	10.05	6.77	3,920.31	293.52	34.85	20.40	0.00	0.00	0.00	
3,960.00	10.05	6.77	3,935.08	296.12	35.16	20.58	0.00	0.00	0.00	
3,975.00	10.05	6.77	3,949.85	298.71	35.47	20.76	0.00	0.00	0.00	
3,990.00	10.05	6.77	3,964.62	301.31	35.78	20.94	0.00	0.00	0.00	
4,005.00	10.05	6.77	3,979.39	303.91	36.09	21.12	0.00	0.00	0.00	
4,020.00	10.05	6.77	3,994.16	306.51	36.39	21.30	0.00	0.00	0.00	
4,035.00	10.05	6.77	4,008.93	309.11	36.70	21.48	0.00	0.00	0.00	
4,050.00	10.05	6.77	4,023.70	311.71	37.01	21.66	0.00	0.00	0.00	
4,065.00	10.05	6.77	4,038.47	314.30	37.32	21.84	0.00	0.00	0.00	
4,080.00	10.05	6.77	4,053.24	316.90	37.63	22.02	0.00	0.00	0.00	
4,095.00	10.05	6.77	4,068.01	319.50	37.94	22.20	0.00	0.00	0.00	
4,110.00	10.05	6.77	4,082.78	322.10	38.25	22.38	0.00	0.00	0.00	
4,125.00	10.05	6.77	4,097.55	324.70	38.55	22.56	0.00	0.00	0.00	
4,140.00	10.05	6.77	4,112.32	327.30	38.86	22.74	0.00	0.00	0.00	
4,155.00	10.05	6.77	4,127.09	329.89	39.17	22.92	0.00	0.00	0.00	
4,170.00	10.05	6.77	4,141.86	332.49	39.48	23.11	0.00	0.00	0.00	
4,185.00	10.05	6.77	4,156.63	335.09	39.79	23.29	0.00	0.00	0.00	
4,200.00	10.05	6.77	4,171.40	337.69	40.10	23.47	0.00	0.00	0.00	
4,215.00	10.05	6.77	4,186.17	340.29	40.41	23.65	0.00	0.00	0.00	
4,230.00	10.05	6.77	4,200.94	342.89	40.71	23.83	0.00	0.00	0.00	
4,245.00	10.05	6.77	4,215.71	345.48	41.02	24.01	0.00	0.00	0.00	
4,260.00	10.05	6.77	4,230.48	348.08	41.33	24.19	0.00	0.00	0.00	
4,275.00	10.05	6.77	4,245.25	350.68	41.64	24.37	0.00	0.00	0.00	
4,290.00	10.05	6.77	4,260.02	353.28	41.95	24.55	0.00	0.00	0.00	
4,305.00	10.05	6.77	4,274.79	355.88	42.26	24.73	0.00	0.00	0.00	
4,320.00	10.05	6.77	4,289.56	358.48	42.57	24.91	0.00	0.00	0.00	
4,335.00	10.05	6.77	4,304.33	361.07	42.87	25.09	0.00	0.00	0.00	
4,350.00	10.05	6.77	4,319.10	363.67	43.18	25.27	0.00	0.00	0.00	
4,365.00	10.05	6.77	4,333.87	366.27	43.49	25.45	0.00	0.00	0.00	
4,380.00	10.05	6.77	4,348.64	368.87	43.80	25.63	0.00	0.00	0.00	
4,395.00	10.05	6.77	4,363.41	371.47	44.11	25.81	0.00	0.00	0.00	
4,410.00	10.05	6.77	4,378.18	374.06	44.42	25.99	0.00	0.00	0.00	
4,425.00	10.05	6.77	4,392.95	376.66	44.72	26.17	0.00	0.00	0.00	
4,440.00	10.05	6.77	4,407.72	379.26	45.03	26.36	0.00	0.00	0.00	
4,455.00	10.05	6.77	4,422.49	381.86	45.34	26.54	0.00	0.00	0.00	
4,470.00	10.05	6.77	4,437.26	384.46	45.65	26.72	0.00	0.00	0.00	
4,485.00	10.05	6.77	4,452.03	387.06	45.96	26.90	0.00	0.00	0.00	
4,500.00	10.05	6.77	4,466.80	389.65	46.27	27.08	0.00	0.00	0.00	
4,515.00	10.05	6.77	4,481.57	392.25	46.58	27.26	0.00	0.00	0.00	
4,530.00	10.05	6.77	4,496.34	394.85	46.88	27.44	0.00	0.00	0.00	
4,545.00	10.05	6.77	4,511.11	397.45	47.19	27.62	0.00	0.00	0.00	
4,560.00	10.05	6.77	4,525.88	400.05	47.50	27.80	0.00	0.00	0.00	
4,575.00	10.05	6.77	4,540.65	402.65	47.81	27.98	0.00	0.00	0.00	
4,590.00	10.05	6.77	4,555.42	405.24	48.12	28.16	0.00	0.00	0.00	
4,605.00	10.05	6.77	4,570.19	407.84	48.43	28.34	0.00	0.00	0.00	
4,620.00	10.05	6.77	4,584.96	410.44	48.74	28.52	0.00	0.00	0.00	
4,635.00	10.05	6.77	4,599.73	413.04	49.04	28.70	0.00	0.00	0.00	
4,650.00	10.05	6.77	4,614.50	415.64	49.35	28.88	0.00	0.00	0.00	
4,665.00	10.05	6.77	4,629.27	418.24	49.66	29.06	0.00	0.00	0.00	
4,680.00	10.05	6.77	4,644.04	420.83	49.97	29.24	0.00	0.00	0.00	
4,695.00	10.05	6.77	4,658.81	423.43	50.28	29.42	0.00	0.00	0.00	
4,710.00	10.05	6.77	4,673.58	426.03	50.59	29.61	0.00	0.00	0.00	
4,725.00	10.05	6.77	4,688.35	428.63	50.90	29.79	0.00	0.00	0.00	

### ConocoPhillips

#### Planning Report

<b>Database:</b>	EDT 17 Permian Prod	<b>Local Co-ordinate Reference:</b>	Well _ CAMPANA FED COM 901H - Slot EAST SLOT 1
<b>Company:</b>	DELAWARE BASIN WEST	<b>TVD Reference:</b>	GL @ 3210.00usft
<b>Project:</b>	EDDY COUNTY _DBW_NM_E	<b>MD Reference:</b>	GL @ 3210.00usft
<b>Site:</b>	CAMPANA STATE PROJECT	<b>North Reference:</b>	Grid
<b>Well:</b>	_CAMPANA FED COM 901H	<b>Survey Calculation Method:</b>	Minimum Curvature
<b>Wellbore:</b>	OWB		
<b>Design:</b>	PWP0		

Planned Survey										
Measured Depth (usft)	Inclination (°)	Azimuth (°)	Vertical Depth (usft)	+N/-S (usft)	+E/-W (usft)	Vertical Section (usft)	Dogleg Rate (°/100usft)	Build Rate (°/100usft)	Turn Rate (°/100usft)	
4,740.00	10.05	6.77	4,703.12	431.23	51.20	29.97	0.00	0.00	0.00	
4,755.00	10.05	6.77	4,717.89	433.83	51.51	30.15	0.00	0.00	0.00	
4,770.00	10.05	6.77	4,732.66	436.42	51.82	30.33	0.00	0.00	0.00	
4,785.00	10.05	6.77	4,747.43	439.02	52.13	30.51	0.00	0.00	0.00	
4,800.00	10.05	6.77	4,762.20	441.62	52.44	30.69	0.00	0.00	0.00	
4,815.00	10.05	6.77	4,776.97	444.22	52.75	30.87	0.00	0.00	0.00	
4,830.00	10.05	6.77	4,791.74	446.82	53.05	31.05	0.00	0.00	0.00	
4,845.00	10.05	6.77	4,806.51	449.41	53.36	31.23	0.00	0.00	0.00	
4,860.00	10.05	6.77	4,821.28	452.01	53.67	31.41	0.00	0.00	0.00	
4,875.00	10.05	6.77	4,836.05	454.61	53.98	31.59	0.00	0.00	0.00	
4,890.00	10.05	6.77	4,850.82	457.21	54.29	31.77	0.00	0.00	0.00	
4,905.00	10.05	6.77	4,865.59	459.81	54.60	31.95	0.00	0.00	0.00	
4,920.00	10.05	6.77	4,880.36	462.41	54.91	32.13	0.00	0.00	0.00	
4,935.00	10.05	6.77	4,895.13	465.00	55.21	32.31	0.00	0.00	0.00	
4,950.00	10.05	6.77	4,909.90	467.60	55.52	32.49	0.00	0.00	0.00	
4,965.00	10.05	6.77	4,924.67	470.20	55.83	32.68	0.00	0.00	0.00	
4,980.00	10.05	6.77	4,939.44	472.80	56.14	32.86	0.00	0.00	0.00	
4,995.00	10.05	6.77	4,954.21	475.40	56.45	33.04	0.00	0.00	0.00	
5,010.00	10.05	6.77	4,968.98	478.00	56.76	33.22	0.00	0.00	0.00	
5,025.00	10.05	6.77	4,983.75	480.59	57.07	33.40	0.00	0.00	0.00	
5,040.00	10.05	6.77	4,998.52	483.19	57.37	33.58	0.00	0.00	0.00	
5,055.00	10.05	6.77	5,013.29	485.79	57.68	33.76	0.00	0.00	0.00	
5,070.00	10.05	6.77	5,028.06	488.39	57.99	33.94	0.00	0.00	0.00	
5,085.00	10.05	6.77	5,042.83	490.99	58.30	34.12	0.00	0.00	0.00	
5,100.00	10.05	6.77	5,057.60	493.59	58.61	34.30	0.00	0.00	0.00	
5,115.00	10.05	6.77	5,072.37	496.18	58.92	34.48	0.00	0.00	0.00	
5,130.00	10.05	6.77	5,087.14	498.78	59.22	34.66	0.00	0.00	0.00	
5,145.00	10.05	6.77	5,101.91	501.38	59.53	34.84	0.00	0.00	0.00	
5,160.00	10.05	6.77	5,116.68	503.98	59.84	35.02	0.00	0.00	0.00	
5,175.00	10.05	6.77	5,131.45	506.58	60.15	35.20	0.00	0.00	0.00	
5,190.00	10.05	6.77	5,146.22	509.17	60.46	35.38	0.00	0.00	0.00	
5,205.00	10.05	6.77	5,160.99	511.77	60.77	35.56	0.00	0.00	0.00	
5,220.00	10.05	6.77	5,175.76	514.37	61.08	35.74	0.00	0.00	0.00	
5,235.00	10.05	6.77	5,190.53	516.97	61.38	35.93	0.00	0.00	0.00	
5,250.00	10.05	6.77	5,205.30	519.57	61.69	36.11	0.00	0.00	0.00	
5,265.00	10.05	6.77	5,220.07	522.17	62.00	36.29	0.00	0.00	0.00	
5,280.00	10.05	6.77	5,234.84	524.76	62.31	36.47	0.00	0.00	0.00	
5,295.00	10.05	6.77	5,249.61	527.36	62.62	36.65	0.00	0.00	0.00	
5,310.00	10.05	6.77	5,264.38	529.96	62.93	36.83	0.00	0.00	0.00	
5,325.00	10.05	6.77	5,279.15	532.56	63.24	37.01	0.00	0.00	0.00	
5,340.00	10.05	6.77	5,293.92	535.16	63.54	37.19	0.00	0.00	0.00	
5,355.00	10.05	6.77	5,308.69	537.76	63.85	37.37	0.00	0.00	0.00	
5,370.00	10.05	6.77	5,323.46	540.35	64.16	37.55	0.00	0.00	0.00	
5,385.00	10.05	6.77	5,338.23	542.95	64.47	37.73	0.00	0.00	0.00	
5,400.00	10.05	6.77	5,353.00	545.55	64.78	37.91	0.00	0.00	0.00	
5,415.00	10.05	6.77	5,367.77	548.15	65.09	38.09	0.00	0.00	0.00	
5,430.00	10.05	6.77	5,382.54	550.75	65.40	38.27	0.00	0.00	0.00	
5,445.00	10.05	6.77	5,397.31	553.35	65.70	38.45	0.00	0.00	0.00	
5,460.00	10.05	6.77	5,412.09	555.94	66.01	38.63	0.00	0.00	0.00	
5,475.00	10.05	6.77	5,426.86	558.54	66.32	38.81	0.00	0.00	0.00	
5,490.00	10.05	6.77	5,441.63	561.14	66.63	38.99	0.00	0.00	0.00	
5,505.00	10.05	6.77	5,456.40	563.74	66.94	39.18	0.00	0.00	0.00	
5,520.00	10.05	6.77	5,471.17	566.34	67.25	39.36	0.00	0.00	0.00	

### ConocoPhillips

#### Planning Report

<b>Database:</b>	EDT 17 Permian Prod	<b>Local Co-ordinate Reference:</b>	Well _ CAMPANA FED COM 901H - Slot EAST SLOT 1
<b>Company:</b>	DELAWARE BASIN WEST	<b>TVD Reference:</b>	GL @ 3210.00usft
<b>Project:</b>	EDDY COUNTY_DBW_NM_E	<b>MD Reference:</b>	GL @ 3210.00usft
<b>Site:</b>	CAMPANA STATE PROJECT	<b>North Reference:</b>	Grid
<b>Well:</b>	_CAMPANA FED COM 901H	<b>Survey Calculation Method:</b>	Minimum Curvature
<b>Wellbore:</b>	OWB		
<b>Design:</b>	PWP0		

Planned Survey										
Measured Depth (usft)	Inclination (°)	Azimuth (°)	Vertical Depth (usft)	+N/-S (usft)	+E/-W (usft)	Vertical Section (usft)	Dogleg Rate (°/100usft)	Build Rate (°/100usft)	Turn Rate (°/100usft)	
5,535.00	10.05	6.77	5,485.94	568.94	67.55	39.54	0.00	0.00	0.00	
5,550.00	10.05	6.77	5,500.71	571.53	67.86	39.72	0.00	0.00	0.00	
5,565.00	10.05	6.77	5,515.48	574.13	68.17	39.90	0.00	0.00	0.00	
5,580.00	10.05	6.77	5,530.25	576.73	68.48	40.08	0.00	0.00	0.00	
5,595.00	10.05	6.77	5,545.02	579.33	68.79	40.26	0.00	0.00	0.00	
5,610.00	10.05	6.77	5,559.79	581.93	69.10	40.44	0.00	0.00	0.00	
5,625.00	10.05	6.77	5,574.56	584.52	69.41	40.62	0.00	0.00	0.00	
5,640.00	10.05	6.77	5,589.33	587.12	69.71	40.80	0.00	0.00	0.00	
5,655.00	10.05	6.77	5,604.10	589.72	70.02	40.98	0.00	0.00	0.00	
5,670.00	10.05	6.77	5,618.87	592.32	70.33	41.16	0.00	0.00	0.00	
5,685.00	10.05	6.77	5,633.64	594.92	70.64	41.34	0.00	0.00	0.00	
5,700.00	10.05	6.77	5,648.41	597.52	70.95	41.52	0.00	0.00	0.00	
5,715.00	10.05	6.77	5,663.18	600.11	71.26	41.70	0.00	0.00	0.00	
5,730.00	10.05	6.77	5,677.95	602.71	71.57	41.88	0.00	0.00	0.00	
5,745.00	10.05	6.77	5,692.72	605.31	71.87	42.06	0.00	0.00	0.00	
5,760.00	10.05	6.77	5,707.49	607.91	72.18	42.24	0.00	0.00	0.00	
5,775.00	10.05	6.77	5,722.26	610.51	72.49	42.43	0.00	0.00	0.00	
5,790.00	10.05	6.77	5,737.03	613.11	72.80	42.61	0.00	0.00	0.00	
5,805.00	10.05	6.77	5,751.80	615.70	73.11	42.79	0.00	0.00	0.00	
5,820.00	10.05	6.77	5,766.57	618.30	73.42	42.97	0.00	0.00	0.00	
5,835.00	10.05	6.77	5,781.34	620.90	73.73	43.15	0.00	0.00	0.00	
5,850.00	10.05	6.77	5,796.11	623.50	74.03	43.33	0.00	0.00	0.00	
5,865.00	10.05	6.77	5,810.88	626.10	74.34	43.51	0.00	0.00	0.00	
5,880.00	10.05	6.77	5,825.65	628.70	74.65	43.69	0.00	0.00	0.00	
5,895.00	10.05	6.77	5,840.42	631.29	74.96	43.87	0.00	0.00	0.00	
5,910.00	10.05	6.77	5,855.19	633.89	75.27	44.05	0.00	0.00	0.00	
5,925.00	10.05	6.77	5,869.96	636.49	75.58	44.23	0.00	0.00	0.00	
5,940.00	10.05	6.77	5,884.73	639.09	75.88	44.41	0.00	0.00	0.00	
5,955.00	10.05	6.77	5,899.50	641.69	76.19	44.59	0.00	0.00	0.00	
5,970.00	10.05	6.77	5,914.27	644.29	76.50	44.77	0.00	0.00	0.00	
5,985.00	10.05	6.77	5,929.04	646.88	76.81	44.95	0.00	0.00	0.00	
6,000.00	10.05	6.77	5,943.81	649.48	77.12	45.13	0.00	0.00	0.00	
6,015.00	10.05	6.77	5,958.58	652.08	77.43	45.31	0.00	0.00	0.00	
6,030.00	10.05	6.77	5,973.35	654.68	77.74	45.49	0.00	0.00	0.00	
6,045.00	10.05	6.77	5,988.12	657.28	78.04	45.68	0.00	0.00	0.00	
6,060.00	10.05	6.77	6,002.89	659.87	78.35	45.86	0.00	0.00	0.00	
6,075.00	10.05	6.77	6,017.66	662.47	78.66	46.04	0.00	0.00	0.00	
6,090.00	10.05	6.77	6,032.43	665.07	78.97	46.22	0.00	0.00	0.00	
6,105.00	10.05	6.77	6,047.20	667.67	79.28	46.40	0.00	0.00	0.00	
6,120.00	10.05	6.77	6,061.97	670.27	79.59	46.58	0.00	0.00	0.00	
6,135.00	10.05	6.77	6,076.74	672.87	79.90	46.76	0.00	0.00	0.00	
6,150.00	10.05	6.77	6,091.51	675.46	80.20	46.94	0.00	0.00	0.00	
6,165.00	10.05	6.77	6,106.28	678.06	80.51	47.12	0.00	0.00	0.00	
6,180.00	10.05	6.77	6,121.05	680.66	80.82	47.30	0.00	0.00	0.00	
6,195.00	10.05	6.77	6,135.82	683.26	81.13	47.48	0.00	0.00	0.00	
6,210.00	10.05	6.77	6,150.59	685.86	81.44	47.66	0.00	0.00	0.00	
6,225.00	10.05	6.77	6,165.36	688.46	81.75	47.84	0.00	0.00	0.00	
6,240.00	10.05	6.77	6,180.13	691.05	82.06	48.02	0.00	0.00	0.00	
6,255.00	10.05	6.77	6,194.90	693.65	82.36	48.20	0.00	0.00	0.00	
6,270.00	10.05	6.77	6,209.67	696.25	82.67	48.38	0.00	0.00	0.00	
6,285.00	10.05	6.77	6,224.44	698.85	82.98	48.56	0.00	0.00	0.00	
6,300.00	10.05	6.77	6,239.21	701.45	83.29	48.74	0.00	0.00	0.00	
6,315.00	10.05	6.77	6,253.98	704.05	83.60	48.93	0.00	0.00	0.00	

ConocoPhillips

Planning Report

<b>Database:</b>	EDT 17 Permian Prod	<b>Local Co-ordinate Reference:</b>	Well _ CAMPANA FED COM 901H - Slot EAST SLOT 1
<b>Company:</b>	DELAWARE BASIN WEST	<b>TVD Reference:</b>	GL @ 3210.00usft
<b>Project:</b>	EDDY COUNTY_DBW_NM_E	<b>MD Reference:</b>	GL @ 3210.00usft
<b>Site:</b>	CAMPANA STATE PROJECT	<b>North Reference:</b>	Grid
<b>Well:</b>	_CAMPANA FED COM 901H	<b>Survey Calculation Method:</b>	Minimum Curvature
<b>Wellbore:</b>	OWB		
<b>Design:</b>	PWP0		

Planned Survey										
Measured Depth (usft)	Inclination (°)	Azimuth (°)	Vertical Depth (usft)	+N/-S (usft)	+E/-W (usft)	Vertical Section (usft)	Dogleg Rate (°/100usft)	Build Rate (°/100usft)	Turn Rate (°/100usft)	
6,330.00	10.05	6.77	6,268.75	706.64	83.91	49.11	0.00	0.00	0.00	
6,345.00	10.05	6.77	6,283.52	709.24	84.21	49.29	0.00	0.00	0.00	
6,360.00	10.05	6.77	6,298.29	711.84	84.52	49.47	0.00	0.00	0.00	
6,375.00	10.05	6.77	6,313.06	714.44	84.83	49.65	0.00	0.00	0.00	
6,390.00	10.05	6.77	6,327.83	717.04	85.14	49.83	0.00	0.00	0.00	
6,405.00	10.05	6.77	6,342.60	719.63	85.45	50.01	0.00	0.00	0.00	
6,420.00	10.05	6.77	6,357.37	722.23	85.76	50.19	0.00	0.00	0.00	
6,435.00	10.05	6.77	6,372.14	724.83	86.07	50.37	0.00	0.00	0.00	
6,450.00	10.05	6.77	6,386.91	727.43	86.37	50.55	0.00	0.00	0.00	
6,465.00	10.05	6.77	6,401.68	730.03	86.68	50.73	0.00	0.00	0.00	
6,480.00	10.05	6.77	6,416.45	732.63	86.99	50.91	0.00	0.00	0.00	
6,495.00	10.05	6.77	6,431.22	735.22	87.30	51.09	0.00	0.00	0.00	
6,510.00	10.05	6.77	6,445.99	737.82	87.61	51.27	0.00	0.00	0.00	
6,525.00	10.05	6.77	6,460.76	740.42	87.92	51.45	0.00	0.00	0.00	
6,540.00	10.05	6.77	6,475.53	743.02	88.23	51.63	0.00	0.00	0.00	
6,555.00	10.05	6.77	6,490.30	745.62	88.53	51.81	0.00	0.00	0.00	
6,570.00	10.05	6.77	6,505.07	748.22	88.84	51.99	0.00	0.00	0.00	
6,585.00	10.05	6.77	6,519.84	750.81	89.15	52.18	0.00	0.00	0.00	
6,600.00	10.05	6.77	6,534.61	753.41	89.46	52.36	0.00	0.00	0.00	
6,615.00	10.05	6.77	6,549.38	756.01	89.77	52.54	0.00	0.00	0.00	
6,630.00	10.05	6.77	6,564.15	758.61	90.08	52.72	0.00	0.00	0.00	
6,645.00	10.05	6.77	6,578.92	761.21	90.39	52.90	0.00	0.00	0.00	
6,660.00	10.05	6.77	6,593.69	763.81	90.69	53.08	0.00	0.00	0.00	
6,675.00	10.05	6.77	6,608.46	766.40	91.00	53.26	0.00	0.00	0.00	
6,690.00	10.05	6.77	6,623.23	769.00	91.31	53.44	0.00	0.00	0.00	
6,705.00	10.05	6.77	6,638.00	771.60	91.62	53.62	0.00	0.00	0.00	
6,720.00	10.05	6.77	6,652.77	774.20	91.93	53.80	0.00	0.00	0.00	
6,735.00	10.05	6.77	6,667.54	776.80	92.24	53.98	0.00	0.00	0.00	
6,750.00	10.05	6.77	6,682.31	779.40	92.54	54.16	0.00	0.00	0.00	
6,765.00	10.05	6.77	6,697.08	781.99	92.85	54.34	0.00	0.00	0.00	
6,780.00	10.05	6.77	6,711.85	784.59	93.16	54.52	0.00	0.00	0.00	
6,795.00	10.05	6.77	6,726.62	787.19	93.47	54.70	0.00	0.00	0.00	
6,810.00	10.05	6.77	6,741.39	789.79	93.78	54.88	0.00	0.00	0.00	
6,825.00	10.05	6.77	6,756.16	792.39	94.09	55.06	0.00	0.00	0.00	
6,840.00	10.05	6.77	6,770.93	794.98	94.40	55.24	0.00	0.00	0.00	
6,855.00	10.05	6.77	6,785.70	797.58	94.70	55.43	0.00	0.00	0.00	
6,870.00	10.05	6.77	6,800.47	800.18	95.01	55.61	0.00	0.00	0.00	
6,885.00	10.05	6.77	6,815.24	802.78	95.32	55.79	0.00	0.00	0.00	
6,900.00	10.05	6.77	6,830.01	805.38	95.63	55.97	0.00	0.00	0.00	
6,915.00	10.05	6.77	6,844.78	807.98	95.94	56.15	0.00	0.00	0.00	
6,930.00	10.05	6.77	6,859.55	810.57	96.25	56.33	0.00	0.00	0.00	
6,945.00	10.05	6.77	6,874.32	813.17	96.56	56.51	0.00	0.00	0.00	
6,960.00	10.05	6.77	6,889.09	815.77	96.86	56.69	0.00	0.00	0.00	
6,975.00	10.05	6.77	6,903.86	818.37	97.17	56.87	0.00	0.00	0.00	
6,990.00	10.05	6.77	6,918.63	820.97	97.48	57.05	0.00	0.00	0.00	
7,005.00	10.05	6.77	6,933.40	823.57	97.79	57.23	0.00	0.00	0.00	
7,020.00	10.05	6.77	6,948.17	826.16	98.10	57.41	0.00	0.00	0.00	
7,035.00	10.05	6.77	6,962.94	828.76	98.41	57.59	0.00	0.00	0.00	
7,050.00	10.05	6.77	6,977.71	831.36	98.72	57.77	0.00	0.00	0.00	
7,065.00	10.05	6.77	6,992.48	833.96	99.02	57.95	0.00	0.00	0.00	
7,073.21	10.05	6.77	7,000.56	835.38	99.19	58.05	0.00	0.00	0.00	
7,080.00	9.98	6.77	7,007.25	836.55	99.33	58.13	1.00	-1.00	0.00	
7,095.00	9.83	6.77	7,022.03	839.11	99.64	58.31	1.00	-1.00	0.00	

### ConocoPhillips

#### Planning Report

<b>Database:</b>	EDT 17 Permian Prod	<b>Local Co-ordinate Reference:</b>	Well _CAMPANA FED COM 901H - Slot EAST SLOT 1
<b>Company:</b>	DELAWARE BASIN WEST	<b>TVD Reference:</b>	GL @ 3210.00usft
<b>Project:</b>	EDDY COUNTY_DBW_NM_E	<b>MD Reference:</b>	GL @ 3210.00usft
<b>Site:</b>	CAMPANA STATE PROJECT	<b>North Reference:</b>	Grid
<b>Well:</b>	_CAMPANA FED COM 901H	<b>Survey Calculation Method:</b>	Minimum Curvature
<b>Wellbore:</b>	OWB		
<b>Design:</b>	PWP0		

Planned Survey										
Measured Depth (usft)	Inclination (°)	Azimuth (°)	Vertical Depth (usft)	+N/-S (usft)	+E/-W (usft)	Vertical Section (usft)	Dogleg Rate (°/100usft)	Build Rate (°/100usft)	Turn Rate (°/100usft)	
7,110.00	9.68	6.77	7,036.81	841.64	99.94	58.49	1.00	-1.00	0.00	
7,125.00	9.53	6.77	7,051.60	844.12	100.23	58.66	1.00	-1.00	0.00	
7,140.00	9.38	6.77	7,066.39	846.57	100.52	58.83	1.00	-1.00	0.00	
7,155.00	9.23	6.77	7,081.20	848.98	100.81	59.00	1.00	-1.00	0.00	
7,170.00	9.08	6.77	7,096.01	851.35	101.09	59.16	1.00	-1.00	0.00	
7,185.00	8.93	6.77	7,110.82	853.68	101.37	59.32	1.00	-1.00	0.00	
7,200.00	8.78	6.77	7,125.64	855.97	101.64	59.48	1.00	-1.00	0.00	
7,215.00	8.63	6.77	7,140.47	858.22	101.90	59.64	1.00	-1.00	0.00	
7,230.00	8.48	6.77	7,155.30	860.44	102.17	59.79	1.00	-1.00	0.00	
7,245.00	8.33	6.77	7,170.14	862.62	102.43	59.94	1.00	-1.00	0.00	
7,260.00	8.18	6.77	7,184.99	864.75	102.68	60.09	1.00	-1.00	0.00	
7,275.00	8.03	6.77	7,199.84	866.85	102.93	60.24	1.00	-1.00	0.00	
7,290.00	7.88	6.77	7,214.69	868.91	103.17	60.38	1.00	-1.00	0.00	
7,305.00	7.73	6.77	7,229.55	870.94	103.41	60.52	1.00	-1.00	0.00	
7,320.00	7.58	6.77	7,244.42	872.92	103.65	60.66	1.00	-1.00	0.00	
7,335.00	7.43	6.77	7,259.29	874.87	103.88	60.80	1.00	-1.00	0.00	
7,350.00	7.28	6.77	7,274.17	876.77	104.11	60.93	1.00	-1.00	0.00	
7,365.00	7.13	6.77	7,289.05	878.64	104.33	61.06	1.00	-1.00	0.00	
7,380.00	6.98	6.77	7,303.94	880.47	104.55	61.19	1.00	-1.00	0.00	
7,395.00	6.83	6.77	7,318.83	882.26	104.76	61.31	1.00	-1.00	0.00	
7,410.00	6.68	6.77	7,333.72	884.01	104.97	61.43	1.00	-1.00	0.00	
7,425.00	6.53	6.77	7,348.62	885.72	105.17	61.55	1.00	-1.00	0.00	
7,440.00	6.38	6.77	7,363.53	887.40	105.37	61.67	1.00	-1.00	0.00	
7,455.00	6.23	6.77	7,378.44	889.03	105.56	61.78	1.00	-1.00	0.00	
7,470.00	6.08	6.77	7,393.35	890.63	105.75	61.89	1.00	-1.00	0.00	
7,485.00	5.93	6.77	7,408.27	892.19	105.94	62.00	1.00	-1.00	0.00	
7,500.00	5.78	6.77	7,423.19	893.70	106.12	62.10	1.00	-1.00	0.00	
7,515.00	5.63	6.77	7,438.12	895.19	106.29	62.21	1.00	-1.00	0.00	
7,530.00	5.48	6.77	7,453.05	896.63	106.46	62.31	1.00	-1.00	0.00	
7,545.00	5.33	6.77	7,467.98	898.03	106.63	62.41	1.00	-1.00	0.00	
7,560.00	5.18	6.77	7,482.92	899.39	106.79	62.50	1.00	-1.00	0.00	
7,575.00	5.03	6.77	7,497.86	900.72	106.95	62.59	1.00	-1.00	0.00	
7,590.00	4.88	6.77	7,512.80	902.00	107.10	62.68	1.00	-1.00	0.00	
7,605.00	4.73	6.77	7,527.75	903.25	107.25	62.77	1.00	-1.00	0.00	
7,620.00	4.58	6.77	7,542.70	904.46	107.39	62.85	1.00	-1.00	0.00	
7,635.00	4.43	6.77	7,557.65	905.63	107.53	62.93	1.00	-1.00	0.00	
7,650.00	4.28	6.77	7,572.61	906.76	107.67	63.01	1.00	-1.00	0.00	
7,665.00	4.13	6.77	7,587.57	907.85	107.80	63.09	1.00	-1.00	0.00	
7,680.00	3.98	6.77	7,602.53	908.90	107.92	63.16	1.00	-1.00	0.00	
7,695.00	3.83	6.77	7,617.50	909.92	108.04	63.23	1.00	-1.00	0.00	
7,710.00	3.68	6.77	7,632.47	910.89	108.16	63.30	1.00	-1.00	0.00	
7,725.00	3.53	6.77	7,647.44	911.83	108.27	63.36	1.00	-1.00	0.00	
7,740.00	3.38	6.77	7,662.41	912.73	108.38	63.43	1.00	-1.00	0.00	
7,755.00	3.23	6.77	7,677.38	913.58	108.48	63.49	1.00	-1.00	0.00	
7,770.00	3.08	6.77	7,692.36	914.40	108.58	63.54	1.00	-1.00	0.00	
7,785.00	2.93	6.77	7,707.34	915.18	108.67	63.60	1.00	-1.00	0.00	
7,800.00	2.78	6.77	7,722.32	915.92	108.76	63.65	1.00	-1.00	0.00	
7,815.00	2.63	6.77	7,737.31	916.63	108.84	63.70	1.00	-1.00	0.00	
7,830.00	2.48	6.77	7,752.29	917.29	108.92	63.74	1.00	-1.00	0.00	
7,845.00	2.33	6.77	7,767.28	917.91	108.99	63.79	1.00	-1.00	0.00	
7,860.00	2.18	6.77	7,782.27	918.50	109.06	63.83	1.00	-1.00	0.00	
7,875.00	2.03	6.77	7,797.26	919.05	109.13	63.87	1.00	-1.00	0.00	
7,890.00	1.88	6.77	7,812.25	919.55	109.19	63.90	1.00	-1.00	0.00	

### ConocoPhillips

#### Planning Report

<b>Database:</b>	EDT 17 Permian Prod	<b>Local Co-ordinate Reference:</b>	Well _CAMPANA FED COM 901H - Slot EAST SLOT 1
<b>Company:</b>	DELAWARE BASIN WEST	<b>TVD Reference:</b>	GL @ 3210.00usft
<b>Project:</b>	EDDY COUNTY_DBW_NM_E	<b>MD Reference:</b>	GL @ 3210.00usft
<b>Site:</b>	CAMPANA STATE PROJECT	<b>North Reference:</b>	Grid
<b>Well:</b>	_CAMPANA FED COM 901H	<b>Survey Calculation Method:</b>	Minimum Curvature
<b>Wellbore:</b>	OWB		
<b>Design:</b>	PWP0		

Planned Survey										
Measured Depth (usft)	Inclination (°)	Azimuth (°)	Vertical Depth (usft)	+N/-S (usft)	+E/-W (usft)	Vertical Section (usft)	Dogleg Rate (°/100usft)	Build Rate (°/100usft)	Turn Rate (°/100usft)	
7,905.00	1.73	6.77	7,827.24	920.02	109.24	63.93	1.00	-1.00	0.00	
7,920.00	1.58	6.77	7,842.23	920.45	109.29	63.96	1.00	-1.00	0.00	
7,935.00	1.43	6.77	7,857.23	920.84	109.34	63.99	1.00	-1.00	0.00	
7,950.00	1.28	6.77	7,872.22	921.20	109.38	64.02	1.00	-1.00	0.00	
7,965.00	1.13	6.77	7,887.22	921.51	109.42	64.04	1.00	-1.00	0.00	
7,980.00	0.98	6.77	7,902.22	921.78	109.45	64.06	1.00	-1.00	0.00	
7,995.00	0.83	6.77	7,917.22	922.02	109.48	64.07	1.00	-1.00	0.00	
8,010.00	0.68	6.77	7,932.21	922.21	109.50	64.09	1.00	-1.00	0.00	
8,025.00	0.53	6.77	7,947.21	922.37	109.52	64.10	1.00	-1.00	0.00	
8,040.00	0.38	6.77	7,962.21	922.49	109.54	64.11	1.00	-1.00	0.00	
8,055.00	0.23	6.77	7,977.21	922.57	109.54	64.11	1.00	-1.00	0.00	
8,070.00	0.08	6.77	7,992.21	922.60	109.55	64.11	1.00	-1.00	0.00	
8,077.79	0.00	0.00	8,000.00	922.61	109.55	64.11	1.00	-1.00	0.00	
8,085.00	0.00	0.00	8,007.21	922.61	109.55	64.11	0.00	0.00	0.00	
8,100.00	0.00	0.00	8,022.21	922.61	109.55	64.11	0.00	0.00	0.00	
8,115.00	0.00	0.00	8,037.21	922.61	109.55	64.11	0.00	0.00	0.00	
8,130.00	0.00	0.00	8,052.21	922.61	109.55	64.11	0.00	0.00	0.00	
8,145.00	0.00	0.00	8,067.21	922.61	109.55	64.11	0.00	0.00	0.00	
8,160.00	0.00	0.00	8,082.21	922.61	109.55	64.11	0.00	0.00	0.00	
8,175.00	0.00	0.00	8,097.21	922.61	109.55	64.11	0.00	0.00	0.00	
8,190.00	0.00	0.00	8,112.21	922.61	109.55	64.11	0.00	0.00	0.00	
8,205.00	0.00	0.00	8,127.21	922.61	109.55	64.11	0.00	0.00	0.00	
8,220.00	0.00	0.00	8,142.21	922.61	109.55	64.11	0.00	0.00	0.00	
8,235.00	0.00	0.00	8,157.21	922.61	109.55	64.11	0.00	0.00	0.00	
8,250.00	0.00	0.00	8,172.21	922.61	109.55	64.11	0.00	0.00	0.00	
8,265.00	0.00	0.00	8,187.21	922.61	109.55	64.11	0.00	0.00	0.00	
8,280.00	0.00	0.00	8,202.21	922.61	109.55	64.11	0.00	0.00	0.00	
8,295.00	0.00	0.00	8,217.21	922.61	109.55	64.11	0.00	0.00	0.00	
8,310.00	0.00	0.00	8,232.21	922.61	109.55	64.11	0.00	0.00	0.00	
8,325.00	0.00	0.00	8,247.21	922.61	109.55	64.11	0.00	0.00	0.00	
8,340.00	0.00	0.00	8,262.21	922.61	109.55	64.11	0.00	0.00	0.00	
8,355.00	0.00	0.00	8,277.21	922.61	109.55	64.11	0.00	0.00	0.00	
8,370.00	0.00	0.00	8,292.21	922.61	109.55	64.11	0.00	0.00	0.00	
8,385.00	0.00	0.00	8,307.21	922.61	109.55	64.11	0.00	0.00	0.00	
8,400.00	0.00	0.00	8,322.21	922.61	109.55	64.11	0.00	0.00	0.00	
8,415.00	0.00	0.00	8,337.21	922.61	109.55	64.11	0.00	0.00	0.00	
8,430.00	0.00	0.00	8,352.21	922.61	109.55	64.11	0.00	0.00	0.00	
8,445.00	0.00	0.00	8,367.21	922.61	109.55	64.11	0.00	0.00	0.00	
8,460.00	0.00	0.00	8,382.21	922.61	109.55	64.11	0.00	0.00	0.00	
8,475.00	0.00	0.00	8,397.21	922.61	109.55	64.11	0.00	0.00	0.00	
8,490.00	0.00	0.00	8,412.21	922.61	109.55	64.11	0.00	0.00	0.00	
8,505.00	0.00	0.00	8,427.21	922.61	109.55	64.11	0.00	0.00	0.00	
8,520.00	0.00	0.00	8,442.21	922.61	109.55	64.11	0.00	0.00	0.00	
8,535.00	0.00	0.00	8,457.21	922.61	109.55	64.11	0.00	0.00	0.00	
8,550.00	0.00	0.00	8,472.21	922.61	109.55	64.11	0.00	0.00	0.00	
8,565.00	0.00	0.00	8,487.21	922.61	109.55	64.11	0.00	0.00	0.00	
8,580.00	0.00	0.00	8,502.21	922.61	109.55	64.11	0.00	0.00	0.00	
8,595.00	0.00	0.00	8,517.21	922.61	109.55	64.11	0.00	0.00	0.00	
8,610.00	0.00	0.00	8,532.21	922.61	109.55	64.11	0.00	0.00	0.00	
8,625.00	0.00	0.00	8,547.21	922.61	109.55	64.11	0.00	0.00	0.00	
8,640.00	0.00	0.00	8,562.21	922.61	109.55	64.11	0.00	0.00	0.00	
8,655.00	0.00	0.00	8,577.21	922.61	109.55	64.11	0.00	0.00	0.00	
8,670.00	0.00	0.00	8,592.21	922.61	109.55	64.11	0.00	0.00	0.00	

### ConocoPhillips

#### Planning Report

<b>Database:</b>	EDT 17 Permian Prod	<b>Local Co-ordinate Reference:</b>	Well _CAMPANA FED COM 901H - Slot EAST SLOT 1
<b>Company:</b>	DELAWARE BASIN WEST	<b>TVD Reference:</b>	GL @ 3210.00usft
<b>Project:</b>	EDDY COUNTY_DBW_NM_E	<b>MD Reference:</b>	GL @ 3210.00usft
<b>Site:</b>	CAMPANA STATE PROJECT	<b>North Reference:</b>	Grid
<b>Well:</b>	_CAMPANA FED COM 901H	<b>Survey Calculation Method:</b>	Minimum Curvature
<b>Wellbore:</b>	OWB		
<b>Design:</b>	PWP0		

Planned Survey										
Measured Depth (usft)	Inclination (°)	Azimuth (°)	Vertical Depth (usft)	+N/-S (usft)	+E/-W (usft)	Vertical Section (usft)	Dogleg Rate (°/100usft)	Build Rate (°/100usft)	Turn Rate (°/100usft)	
8,685.00	0.00	0.00	8,607.21	922.61	109.55	64.11	0.00	0.00	0.00	
8,700.00	0.00	0.00	8,622.21	922.61	109.55	64.11	0.00	0.00	0.00	
8,715.00	0.00	0.00	8,637.21	922.61	109.55	64.11	0.00	0.00	0.00	
8,730.00	0.00	0.00	8,652.21	922.61	109.55	64.11	0.00	0.00	0.00	
8,745.00	0.00	0.00	8,667.21	922.61	109.55	64.11	0.00	0.00	0.00	
8,760.00	0.00	0.00	8,682.21	922.61	109.55	64.11	0.00	0.00	0.00	
8,775.00	0.00	0.00	8,697.21	922.61	109.55	64.11	0.00	0.00	0.00	
8,790.00	0.00	0.00	8,712.21	922.61	109.55	64.11	0.00	0.00	0.00	
8,805.00	0.00	0.00	8,727.21	922.61	109.55	64.11	0.00	0.00	0.00	
8,820.00	0.00	0.00	8,742.21	922.61	109.55	64.11	0.00	0.00	0.00	
8,835.00	0.00	0.00	8,757.21	922.61	109.55	64.11	0.00	0.00	0.00	
8,850.00	0.00	0.00	8,772.21	922.61	109.55	64.11	0.00	0.00	0.00	
8,865.00	0.00	0.00	8,787.21	922.61	109.55	64.11	0.00	0.00	0.00	
8,880.00	0.00	0.00	8,802.21	922.61	109.55	64.11	0.00	0.00	0.00	
8,895.00	0.00	0.00	8,817.21	922.61	109.55	64.11	0.00	0.00	0.00	
8,910.00	0.00	0.00	8,832.21	922.61	109.55	64.11	0.00	0.00	0.00	
8,925.00	0.00	0.00	8,847.21	922.61	109.55	64.11	0.00	0.00	0.00	
8,940.00	0.00	0.00	8,862.21	922.61	109.55	64.11	0.00	0.00	0.00	
8,955.00	0.00	0.00	8,877.21	922.61	109.55	64.11	0.00	0.00	0.00	
8,970.00	0.00	0.00	8,892.21	922.61	109.55	64.11	0.00	0.00	0.00	
8,985.00	0.00	0.00	8,907.21	922.61	109.55	64.11	0.00	0.00	0.00	
9,000.00	0.00	0.00	8,922.21	922.61	109.55	64.11	0.00	0.00	0.00	
9,000.33	0.00	0.00	8,922.54	922.61	109.55	64.11	0.00	0.00	0.00	
9,015.00	1.76	269.54	8,937.21	922.61	109.32	64.33	12.00	12.00	0.00	
9,030.00	3.56	269.54	8,952.19	922.60	108.63	65.02	12.00	12.00	0.00	
9,045.00	5.36	269.54	8,967.15	922.59	107.46	66.16	12.00	12.00	0.00	
9,060.00	7.16	269.54	8,982.06	922.58	105.83	67.77	12.00	12.00	0.00	
9,075.00	8.96	269.54	8,996.91	922.56	103.72	69.83	12.00	12.00	0.00	
9,090.00	10.76	269.54	9,011.69	922.54	101.15	72.35	12.00	12.00	0.00	
9,105.00	12.56	269.54	9,026.38	922.52	98.12	75.32	12.00	12.00	0.00	
9,120.00	14.36	269.54	9,040.96	922.49	94.63	78.75	12.00	12.00	0.00	
9,135.00	16.16	269.54	9,055.43	922.46	90.68	82.62	12.00	12.00	0.00	
9,150.00	17.96	269.54	9,069.77	922.42	86.28	86.94	12.00	12.00	0.00	
9,165.00	19.76	269.54	9,083.97	922.39	81.43	91.70	12.00	12.00	0.00	
9,180.00	21.56	269.54	9,098.00	922.34	76.14	96.89	12.00	12.00	0.00	
9,195.00	23.36	269.54	9,111.86	922.30	70.41	102.51	12.00	12.00	0.00	
9,210.00	25.16	269.54	9,125.54	922.25	64.25	108.56	12.00	12.00	0.00	
9,225.00	26.96	269.54	9,139.01	922.20	57.66	115.02	12.00	12.00	0.00	
9,240.00	28.76	269.54	9,152.27	922.14	50.65	121.90	12.00	12.00	0.00	
9,255.00	30.56	269.54	9,165.31	922.08	43.23	129.18	12.00	12.00	0.00	
9,270.00	32.36	269.54	9,178.10	922.02	35.40	136.86	12.00	12.00	0.00	
9,285.00	34.16	269.54	9,190.64	921.95	27.17	144.93	12.00	12.00	0.00	
9,300.00	35.96	269.54	9,202.92	921.88	18.56	153.38	12.00	12.00	0.00	
9,315.00	37.76	269.54	9,214.92	921.81	9.56	162.21	12.00	12.00	0.00	
9,330.00	39.56	269.54	9,226.64	921.74	0.19	171.40	12.00	12.00	0.00	
9,345.00	41.36	269.54	9,238.05	921.66	-9.54	180.95	12.00	12.00	0.00	
9,360.00	43.16	269.54	9,249.15	921.58	-19.63	190.84	12.00	12.00	0.00	
9,375.00	44.96	269.54	9,259.93	921.50	-30.06	201.08	12.00	12.00	0.00	
9,390.00	46.76	269.54	9,270.37	921.41	-40.82	211.64	12.00	12.00	0.00	
9,405.00	48.56	269.54	9,280.48	921.32	-51.91	222.51	12.00	12.00	0.00	
9,420.00	50.36	269.54	9,290.22	921.23	-63.31	233.70	12.00	12.00	0.00	
9,435.00	52.16	269.54	9,299.61	921.14	-75.01	245.17	12.00	12.00	0.00	
9,450.00	53.96	269.54	9,308.63	921.04	-87.00	256.93	12.00	12.00	0.00	

### ConocoPhillips

#### Planning Report

<b>Database:</b>	EDT 17 Permian Prod	<b>Local Co-ordinate Reference:</b>	Well _ CAMPANA FED COM 901H - Slot EAST SLOT 1
<b>Company:</b>	DELAWARE BASIN WEST	<b>TVD Reference:</b>	GL @ 3210.00usft
<b>Project:</b>	EDDY COUNTY_DBW_NM_E	<b>MD Reference:</b>	GL @ 3210.00usft
<b>Site:</b>	CAMPANA STATE PROJECT	<b>North Reference:</b>	Grid
<b>Well:</b>	_CAMPANA FED COM 901H	<b>Survey Calculation Method:</b>	Minimum Curvature
<b>Wellbore:</b>	OWB		
<b>Design:</b>	PWP0		

Planned Survey										
Measured Depth (usft)	Inclination (°)	Azimuth (°)	Vertical Depth (usft)	+N/-S (usft)	+E/-W (usft)	Vertical Section (usft)	Dogleg Rate (°/100usft)	Build Rate (°/100usft)	Turn Rate (°/100usft)	
9,465.00	55.76	269.54	9,317.26	920.94	-99.26	268.97	12.00	12.00	0.00	
9,480.00	57.56	269.54	9,325.50	920.84	-111.79	281.26	12.00	12.00	0.00	
9,495.00	59.36	269.54	9,333.35	920.74	-124.58	293.80	12.00	12.00	0.00	
9,510.00	61.16	269.54	9,340.79	920.64	-137.60	306.58	12.00	12.00	0.00	
9,525.00	62.96	269.54	9,347.82	920.53	-150.85	319.58	12.00	12.00	0.00	
9,540.00	64.76	269.54	9,354.42	920.42	-164.32	332.79	12.00	12.00	0.00	
9,555.00	66.56	269.54	9,360.61	920.32	-177.98	346.19	12.00	12.00	0.00	
9,570.00	68.36	269.54	9,366.36	920.20	-191.83	359.78	12.00	12.00	0.00	
9,585.00	70.16	269.54	9,371.67	920.09	-205.86	373.54	12.00	12.00	0.00	
9,600.00	71.96	269.54	9,376.54	919.98	-220.05	387.46	12.00	12.00	0.00	
9,615.00	73.76	269.54	9,380.96	919.87	-234.38	401.52	12.00	12.00	0.00	
9,630.00	75.56	269.54	9,384.92	919.75	-248.85	415.71	12.00	12.00	0.00	
9,645.00	77.36	269.54	9,388.43	919.63	-263.43	430.02	12.00	12.00	0.00	
9,660.00	79.16	269.54	9,391.49	919.52	-278.11	444.42	12.00	12.00	0.00	
9,675.00	80.96	269.54	9,394.08	919.40	-292.89	458.92	12.00	12.00	0.00	
9,690.00	82.76	269.54	9,396.20	919.28	-307.74	473.48	12.00	12.00	0.00	
9,705.00	84.56	269.54	9,397.86	919.16	-322.64	488.11	12.00	12.00	0.00	
9,720.00	86.36	269.54	9,399.04	919.04	-337.59	502.78	12.00	12.00	0.00	
9,735.00	88.16	269.54	9,399.76	918.92	-352.58	517.48	12.00	12.00	0.00	
9,750.00	89.96	269.54	9,400.00	918.80	-367.57	532.19	12.00	12.00	0.00	
9,750.33	90.00	269.54	9,400.01	918.80	-367.90	532.51	12.00	12.00	0.00	
9,765.00	90.00	269.54	9,400.01	918.68	-382.57	546.90	0.00	0.00	0.00	
9,780.00	90.00	269.54	9,400.01	918.56	-397.57	561.62	0.00	0.00	0.00	
9,795.00	90.00	269.54	9,400.00	918.44	-412.57	576.33	0.00	0.00	0.00	
9,810.00	90.00	269.54	9,400.00	918.32	-427.57	591.05	0.00	0.00	0.00	
9,825.00	90.00	269.54	9,400.00	918.20	-442.57	605.76	0.00	0.00	0.00	
9,840.00	90.00	269.54	9,400.00	918.08	-457.57	620.48	0.00	0.00	0.00	
9,855.00	90.00	269.54	9,400.00	917.96	-472.57	635.19	0.00	0.00	0.00	
9,870.00	90.00	269.54	9,400.00	917.84	-487.57	649.91	0.00	0.00	0.00	
9,885.00	90.00	269.54	9,400.00	917.72	-502.57	664.62	0.00	0.00	0.00	
9,900.00	90.00	269.54	9,400.00	917.61	-517.57	679.34	0.00	0.00	0.00	
9,915.00	90.00	269.54	9,400.00	917.49	-532.57	694.05	0.00	0.00	0.00	
9,930.00	90.00	269.54	9,400.00	917.37	-547.57	708.77	0.00	0.00	0.00	
9,945.00	90.00	269.54	9,400.00	917.25	-562.57	723.48	0.00	0.00	0.00	
9,960.00	90.00	269.54	9,400.00	917.13	-577.57	738.20	0.00	0.00	0.00	
9,975.00	90.00	269.54	9,400.00	917.01	-592.57	752.91	0.00	0.00	0.00	
9,990.00	90.00	269.54	9,400.00	916.89	-607.57	767.63	0.00	0.00	0.00	
10,005.00	90.00	269.54	9,400.00	916.77	-622.56	782.34	0.00	0.00	0.00	
10,020.00	90.00	269.54	9,400.00	916.65	-637.56	797.06	0.00	0.00	0.00	
10,035.00	90.00	269.54	9,400.00	916.53	-652.56	811.77	0.00	0.00	0.00	
10,050.00	90.00	269.54	9,400.00	916.41	-667.56	826.49	0.00	0.00	0.00	
10,065.00	90.00	269.54	9,400.00	916.29	-682.56	841.20	0.00	0.00	0.00	
10,080.00	90.00	269.54	9,400.00	916.17	-697.56	855.92	0.00	0.00	0.00	
10,095.00	90.00	269.54	9,400.00	916.05	-712.56	870.63	0.00	0.00	0.00	
10,110.00	90.00	269.54	9,400.00	915.93	-727.56	885.35	0.00	0.00	0.00	
10,125.00	90.00	269.54	9,400.00	915.81	-742.56	900.06	0.00	0.00	0.00	
10,140.00	90.00	269.54	9,400.00	915.69	-757.56	914.78	0.00	0.00	0.00	
10,155.00	90.00	269.54	9,400.00	915.57	-772.56	929.49	0.00	0.00	0.00	
10,170.00	90.00	269.54	9,400.00	915.45	-787.56	944.21	0.00	0.00	0.00	
10,185.00	90.00	269.54	9,400.00	915.33	-802.56	958.92	0.00	0.00	0.00	
10,200.00	90.00	269.54	9,400.00	915.21	-817.56	973.64	0.00	0.00	0.00	
10,215.00	90.00	269.54	9,400.00	915.09	-832.56	988.35	0.00	0.00	0.00	
10,230.00	90.00	269.54	9,400.00	914.97	-847.56	1,003.07	0.00	0.00	0.00	

### ConocoPhillips

#### Planning Report

<b>Database:</b>	EDT 17 Permian Prod	<b>Local Co-ordinate Reference:</b>	Well _ CAMPANA FED COM 901H - Slot EAST SLOT 1
<b>Company:</b>	DELAWARE BASIN WEST	<b>TVD Reference:</b>	GL @ 3210.00usft
<b>Project:</b>	EDDY COUNTY_DBW_NM_E	<b>MD Reference:</b>	GL @ 3210.00usft
<b>Site:</b>	CAMPANA STATE PROJECT	<b>North Reference:</b>	Grid
<b>Well:</b>	_CAMPANA FED COM 901H	<b>Survey Calculation Method:</b>	Minimum Curvature
<b>Wellbore:</b>	OWB		
<b>Design:</b>	PWP0		

Planned Survey										
Measured Depth (usft)	Inclination (°)	Azimuth (°)	Vertical Depth (usft)	+N/-S (usft)	+E/-W (usft)	Vertical Section (usft)	Dogleg Rate (°/100usft)	Build Rate (°/100usft)	Turn Rate (°/100usft)	
10,245.00	90.00	269.54	9,400.00	914.85	-862.56	1,017.78	0.00	0.00	0.00	
10,260.00	90.00	269.54	9,400.00	914.73	-877.56	1,032.50	0.00	0.00	0.00	
10,275.00	90.00	269.54	9,400.00	914.61	-892.56	1,047.21	0.00	0.00	0.00	
10,290.00	90.00	269.54	9,400.00	914.49	-907.56	1,061.93	0.00	0.00	0.00	
10,305.00	90.00	269.54	9,400.00	914.37	-922.56	1,076.64	0.00	0.00	0.00	
10,320.00	90.00	269.54	9,400.00	914.25	-937.55	1,091.36	0.00	0.00	0.00	
10,335.00	90.00	269.54	9,400.00	914.13	-952.55	1,106.07	0.00	0.00	0.00	
10,350.00	90.00	269.54	9,400.00	914.01	-967.55	1,120.79	0.00	0.00	0.00	
10,365.00	90.00	269.54	9,400.00	913.89	-982.55	1,135.50	0.00	0.00	0.00	
10,380.00	90.00	269.54	9,400.00	913.77	-997.55	1,150.22	0.00	0.00	0.00	
10,395.00	90.00	269.54	9,400.00	913.65	-1,012.55	1,164.93	0.00	0.00	0.00	
10,410.00	90.00	269.54	9,400.00	913.54	-1,027.55	1,179.65	0.00	0.00	0.00	
10,425.00	90.00	269.54	9,400.00	913.42	-1,042.55	1,194.36	0.00	0.00	0.00	
10,440.00	90.00	269.54	9,400.00	913.30	-1,057.55	1,209.08	0.00	0.00	0.00	
10,455.00	90.00	269.54	9,400.00	913.18	-1,072.55	1,223.80	0.00	0.00	0.00	
10,470.00	90.00	269.54	9,400.00	913.06	-1,087.55	1,238.51	0.00	0.00	0.00	
10,485.00	90.00	269.54	9,400.00	912.94	-1,102.55	1,253.23	0.00	0.00	0.00	
10,500.00	90.00	269.54	9,400.00	912.82	-1,117.55	1,267.94	0.00	0.00	0.00	
10,515.00	90.00	269.54	9,400.00	912.70	-1,132.55	1,282.66	0.00	0.00	0.00	
10,530.00	90.00	269.54	9,400.00	912.58	-1,147.55	1,297.37	0.00	0.00	0.00	
10,545.00	90.00	269.54	9,400.00	912.46	-1,162.55	1,312.09	0.00	0.00	0.00	
10,560.00	90.00	269.54	9,400.00	912.34	-1,177.55	1,326.80	0.00	0.00	0.00	
10,575.00	90.00	269.54	9,400.00	912.22	-1,192.55	1,341.52	0.00	0.00	0.00	
10,590.00	90.00	269.54	9,400.00	912.10	-1,207.55	1,356.23	0.00	0.00	0.00	
10,605.00	90.00	269.54	9,400.00	911.98	-1,222.55	1,370.95	0.00	0.00	0.00	
10,620.00	90.00	269.54	9,400.00	911.86	-1,237.55	1,385.66	0.00	0.00	0.00	
10,635.00	90.00	269.54	9,400.00	911.74	-1,252.54	1,400.38	0.00	0.00	0.00	
10,650.00	90.00	269.54	9,400.00	911.62	-1,267.54	1,415.09	0.00	0.00	0.00	
10,665.00	90.00	269.54	9,400.00	911.50	-1,282.54	1,429.81	0.00	0.00	0.00	
10,680.00	90.00	269.54	9,400.00	911.38	-1,297.54	1,444.52	0.00	0.00	0.00	
10,695.00	90.00	269.54	9,400.00	911.26	-1,312.54	1,459.24	0.00	0.00	0.00	
10,710.00	90.00	269.54	9,400.00	911.14	-1,327.54	1,473.95	0.00	0.00	0.00	
10,725.00	90.00	269.54	9,400.00	911.02	-1,342.54	1,488.67	0.00	0.00	0.00	
10,740.00	90.00	269.54	9,400.00	910.90	-1,357.54	1,503.38	0.00	0.00	0.00	
10,755.00	90.00	269.54	9,400.00	910.78	-1,372.54	1,518.10	0.00	0.00	0.00	
10,770.00	90.00	269.54	9,400.00	910.66	-1,387.54	1,532.81	0.00	0.00	0.00	
10,785.00	90.00	269.54	9,400.00	910.54	-1,402.54	1,547.53	0.00	0.00	0.00	
10,800.00	90.00	269.54	9,400.00	910.42	-1,417.54	1,562.24	0.00	0.00	0.00	
10,815.00	90.00	269.54	9,400.00	910.30	-1,432.54	1,576.96	0.00	0.00	0.00	
10,830.00	90.00	269.54	9,400.00	910.18	-1,447.54	1,591.67	0.00	0.00	0.00	
10,845.00	90.00	269.54	9,400.00	910.06	-1,462.54	1,606.39	0.00	0.00	0.00	
10,860.00	90.00	269.54	9,400.00	909.94	-1,477.54	1,621.10	0.00	0.00	0.00	
10,875.00	90.00	269.54	9,400.00	909.82	-1,492.54	1,635.82	0.00	0.00	0.00	
10,890.00	90.00	269.54	9,400.00	909.70	-1,507.54	1,650.53	0.00	0.00	0.00	
10,905.00	90.00	269.54	9,400.00	909.58	-1,522.54	1,665.25	0.00	0.00	0.00	
10,920.00	90.00	269.54	9,400.00	909.47	-1,537.54	1,679.96	0.00	0.00	0.00	
10,935.00	90.00	269.54	9,400.00	909.35	-1,552.54	1,694.68	0.00	0.00	0.00	
10,950.00	90.00	269.54	9,400.00	909.23	-1,567.53	1,709.39	0.00	0.00	0.00	
10,965.00	90.00	269.54	9,400.00	909.11	-1,582.53	1,724.11	0.00	0.00	0.00	
10,980.00	90.00	269.54	9,400.00	908.99	-1,597.53	1,738.82	0.00	0.00	0.00	
10,995.00	90.00	269.54	9,400.00	908.87	-1,612.53	1,753.54	0.00	0.00	0.00	
11,010.00	90.00	269.54	9,400.00	908.75	-1,627.53	1,768.25	0.00	0.00	0.00	
11,025.00	90.00	269.54	9,400.00	908.63	-1,642.53	1,782.97	0.00	0.00	0.00	

### ConocoPhillips

#### Planning Report

<b>Database:</b>	EDT 17 Permian Prod	<b>Local Co-ordinate Reference:</b>	Well _ CAMPANA FED COM 901H - Slot EAST SLOT 1
<b>Company:</b>	DELAWARE BASIN WEST	<b>TVD Reference:</b>	GL @ 3210.00usft
<b>Project:</b>	EDDY COUNTY_DBW_NM_E	<b>MD Reference:</b>	GL @ 3210.00usft
<b>Site:</b>	CAMPANA STATE PROJECT	<b>North Reference:</b>	Grid
<b>Well:</b>	_CAMPANA FED COM 901H	<b>Survey Calculation Method:</b>	Minimum Curvature
<b>Wellbore:</b>	OWB		
<b>Design:</b>	PWP0		

Planned Survey										
Measured Depth (usft)	Inclination (°)	Azimuth (°)	Vertical Depth (usft)	+N/-S (usft)	+E/-W (usft)	Vertical Section (usft)	Dogleg Rate (°/100usft)	Build Rate (°/100usft)	Turn Rate (°/100usft)	
11,040.00	90.00	269.54	9,400.00	908.51	-1,657.53	1,797.68	0.00	0.00	0.00	
11,055.00	90.00	269.54	9,400.00	908.39	-1,672.53	1,812.40	0.00	0.00	0.00	
11,070.00	90.00	269.54	9,400.00	908.27	-1,687.53	1,827.11	0.00	0.00	0.00	
11,085.00	90.00	269.54	9,400.00	908.15	-1,702.53	1,841.83	0.00	0.00	0.00	
11,100.00	90.00	269.54	9,400.00	908.03	-1,717.53	1,856.54	0.00	0.00	0.00	
11,115.00	90.00	269.54	9,400.00	907.91	-1,732.53	1,871.26	0.00	0.00	0.00	
11,130.00	90.00	269.54	9,400.00	907.79	-1,747.53	1,885.97	0.00	0.00	0.00	
11,145.00	90.00	269.54	9,400.00	907.67	-1,762.53	1,900.69	0.00	0.00	0.00	
11,160.00	90.00	269.54	9,400.00	907.55	-1,777.53	1,915.40	0.00	0.00	0.00	
11,175.00	90.00	269.54	9,400.00	907.43	-1,792.53	1,930.12	0.00	0.00	0.00	
11,190.00	90.00	269.54	9,400.00	907.31	-1,807.53	1,944.83	0.00	0.00	0.00	
11,205.00	90.00	269.54	9,400.00	907.19	-1,822.53	1,959.55	0.00	0.00	0.00	
11,220.00	90.00	269.54	9,400.00	907.07	-1,837.53	1,974.26	0.00	0.00	0.00	
11,235.00	90.00	269.54	9,400.00	906.95	-1,852.53	1,988.98	0.00	0.00	0.00	
11,250.00	90.00	269.54	9,400.00	906.83	-1,867.53	2,003.69	0.00	0.00	0.00	
11,265.00	90.00	269.54	9,400.00	906.71	-1,882.52	2,018.41	0.00	0.00	0.00	
11,280.00	90.00	269.54	9,400.00	906.59	-1,897.52	2,033.12	0.00	0.00	0.00	
11,295.00	90.00	269.54	9,400.00	906.47	-1,912.52	2,047.84	0.00	0.00	0.00	
11,310.00	90.00	269.54	9,400.00	906.35	-1,927.52	2,062.55	0.00	0.00	0.00	
11,325.00	90.00	269.54	9,400.00	906.23	-1,942.52	2,077.27	0.00	0.00	0.00	
11,340.00	90.00	269.54	9,400.00	906.11	-1,957.52	2,091.98	0.00	0.00	0.00	
11,355.00	90.00	269.54	9,400.00	905.99	-1,972.52	2,106.70	0.00	0.00	0.00	
11,370.00	90.00	269.54	9,400.00	905.87	-1,987.52	2,121.41	0.00	0.00	0.00	
11,385.00	90.00	269.54	9,400.00	905.75	-2,002.52	2,136.13	0.00	0.00	0.00	
11,400.00	90.00	269.54	9,400.00	905.63	-2,017.52	2,150.84	0.00	0.00	0.00	
11,415.00	90.00	269.54	9,400.00	905.51	-2,032.52	2,165.56	0.00	0.00	0.00	
11,430.00	90.00	269.54	9,400.00	905.40	-2,047.52	2,180.27	0.00	0.00	0.00	
11,445.00	90.00	269.54	9,400.00	905.28	-2,062.52	2,194.99	0.00	0.00	0.00	
11,460.00	90.00	269.54	9,400.00	905.16	-2,077.52	2,209.70	0.00	0.00	0.00	
11,475.00	90.00	269.54	9,400.00	905.04	-2,092.52	2,224.42	0.00	0.00	0.00	
11,490.00	90.00	269.54	9,400.00	904.92	-2,107.52	2,239.13	0.00	0.00	0.00	
11,505.00	90.00	269.54	9,400.00	904.80	-2,122.52	2,253.85	0.00	0.00	0.00	
11,520.00	90.00	269.54	9,400.00	904.68	-2,137.52	2,268.56	0.00	0.00	0.00	
11,535.00	90.00	269.54	9,400.00	904.56	-2,152.52	2,283.28	0.00	0.00	0.00	
11,550.00	90.00	269.54	9,400.00	904.44	-2,167.52	2,297.99	0.00	0.00	0.00	
11,565.00	90.00	269.54	9,400.00	904.32	-2,182.51	2,312.71	0.00	0.00	0.00	
11,580.00	90.00	269.54	9,400.00	904.20	-2,197.51	2,327.42	0.00	0.00	0.00	
11,595.00	90.00	269.54	9,400.00	904.08	-2,212.51	2,342.14	0.00	0.00	0.00	
11,610.00	90.00	269.54	9,400.00	903.96	-2,227.51	2,356.85	0.00	0.00	0.00	
11,625.00	90.00	269.54	9,400.00	903.84	-2,242.51	2,371.57	0.00	0.00	0.00	
11,640.00	90.00	269.54	9,400.00	903.72	-2,257.51	2,386.28	0.00	0.00	0.00	
11,655.00	90.00	269.54	9,400.00	903.60	-2,272.51	2,401.00	0.00	0.00	0.00	
11,670.00	90.00	269.54	9,400.00	903.48	-2,287.51	2,415.71	0.00	0.00	0.00	
11,685.00	90.00	269.54	9,400.00	903.36	-2,302.51	2,430.43	0.00	0.00	0.00	
11,700.00	90.00	269.54	9,400.00	903.24	-2,317.51	2,445.14	0.00	0.00	0.00	
11,715.00	90.00	269.54	9,400.00	903.12	-2,332.51	2,459.86	0.00	0.00	0.00	
11,730.00	90.00	269.54	9,400.00	903.00	-2,347.51	2,474.57	0.00	0.00	0.00	
11,745.00	90.00	269.54	9,400.00	902.88	-2,362.51	2,489.29	0.00	0.00	0.00	
11,760.00	90.00	269.54	9,400.00	902.76	-2,377.51	2,504.00	0.00	0.00	0.00	
11,775.00	90.00	269.54	9,400.00	902.64	-2,392.51	2,518.72	0.00	0.00	0.00	
11,790.00	90.00	269.54	9,400.00	902.52	-2,407.51	2,533.43	0.00	0.00	0.00	
11,805.00	90.00	269.54	9,400.00	902.40	-2,422.51	2,548.15	0.00	0.00	0.00	
11,820.00	90.00	269.54	9,400.00	902.28	-2,437.51	2,562.86	0.00	0.00	0.00	

### ConocoPhillips

#### Planning Report

<b>Database:</b>	EDT 17 Permian Prod	<b>Local Co-ordinate Reference:</b>	Well _ CAMPANA FED COM 901H - Slot EAST SLOT 1
<b>Company:</b>	DELAWARE BASIN WEST	<b>TVD Reference:</b>	GL @ 3210.00usft
<b>Project:</b>	EDDY COUNTY_DBW_NM_E	<b>MD Reference:</b>	GL @ 3210.00usft
<b>Site:</b>	CAMPANA STATE PROJECT	<b>North Reference:</b>	Grid
<b>Well:</b>	_CAMPANA FED COM 901H	<b>Survey Calculation Method:</b>	Minimum Curvature
<b>Wellbore:</b>	OWB		
<b>Design:</b>	PWP0		

Planned Survey										
Measured Depth (usft)	Inclination (°)	Azimuth (°)	Vertical Depth (usft)	+N/-S (usft)	+E/-W (usft)	Vertical Section (usft)	Dogleg Rate (°/100usft)	Build Rate (°/100usft)	Turn Rate (°/100usft)	
11,835.00	90.00	269.54	9,400.00	902.16	-2,452.51	2,577.58	0.00	0.00	0.00	
11,850.00	90.00	269.54	9,400.00	902.04	-2,467.51	2,592.29	0.00	0.00	0.00	
11,865.00	90.00	269.54	9,400.00	901.92	-2,482.51	2,607.01	0.00	0.00	0.00	
11,880.00	90.00	269.54	9,400.00	901.80	-2,497.50	2,621.73	0.00	0.00	0.00	
11,895.00	90.00	269.54	9,400.00	901.68	-2,512.50	2,636.44	0.00	0.00	0.00	
11,910.00	90.00	269.54	9,400.00	901.56	-2,527.50	2,651.16	0.00	0.00	0.00	
11,925.00	90.00	269.54	9,400.00	901.44	-2,542.50	2,665.87	0.00	0.00	0.00	
11,940.00	90.00	269.54	9,400.00	901.33	-2,557.50	2,680.59	0.00	0.00	0.00	
11,955.00	90.00	269.54	9,400.00	901.21	-2,572.50	2,695.30	0.00	0.00	0.00	
11,970.00	90.00	269.54	9,400.00	901.09	-2,587.50	2,710.02	0.00	0.00	0.00	
11,985.00	90.00	269.54	9,400.00	900.97	-2,602.50	2,724.73	0.00	0.00	0.00	
12,000.00	90.00	269.54	9,400.00	900.85	-2,617.50	2,739.45	0.00	0.00	0.00	
12,015.00	90.00	269.54	9,400.00	900.73	-2,632.50	2,754.16	0.00	0.00	0.00	
12,030.00	90.00	269.54	9,400.00	900.61	-2,647.50	2,768.88	0.00	0.00	0.00	
12,045.00	90.00	269.54	9,400.00	900.49	-2,662.50	2,783.59	0.00	0.00	0.00	
12,060.00	90.00	269.54	9,400.00	900.37	-2,677.50	2,798.31	0.00	0.00	0.00	
12,075.00	90.00	269.54	9,400.00	900.25	-2,692.50	2,813.02	0.00	0.00	0.00	
12,090.00	90.00	269.54	9,400.00	900.13	-2,707.50	2,827.74	0.00	0.00	0.00	
12,105.00	90.00	269.54	9,400.00	900.01	-2,722.50	2,842.45	0.00	0.00	0.00	
12,120.00	90.00	269.54	9,400.00	899.89	-2,737.50	2,857.17	0.00	0.00	0.00	
12,135.00	90.00	269.54	9,400.00	899.77	-2,752.50	2,871.88	0.00	0.00	0.00	
12,150.00	90.00	269.54	9,400.00	899.65	-2,767.50	2,886.60	0.00	0.00	0.00	
12,165.00	90.00	269.54	9,400.00	899.53	-2,782.50	2,901.31	0.00	0.00	0.00	
12,180.00	90.00	269.54	9,400.00	899.41	-2,797.50	2,916.03	0.00	0.00	0.00	
12,195.00	90.00	269.54	9,400.00	899.29	-2,812.49	2,930.74	0.00	0.00	0.00	
12,210.00	90.00	269.54	9,400.00	899.17	-2,827.49	2,945.46	0.00	0.00	0.00	
12,225.00	90.00	269.54	9,400.00	899.05	-2,842.49	2,960.17	0.00	0.00	0.00	
12,240.00	90.00	269.54	9,400.00	898.93	-2,857.49	2,974.89	0.00	0.00	0.00	
12,255.00	90.00	269.54	9,400.00	898.81	-2,872.49	2,989.60	0.00	0.00	0.00	
12,270.00	90.00	269.54	9,400.00	898.69	-2,887.49	3,004.32	0.00	0.00	0.00	
12,285.00	90.00	269.54	9,400.00	898.57	-2,902.49	3,019.03	0.00	0.00	0.00	
12,300.00	90.00	269.54	9,400.00	898.45	-2,917.49	3,033.75	0.00	0.00	0.00	
12,315.00	90.00	269.54	9,400.00	898.33	-2,932.49	3,048.46	0.00	0.00	0.00	
12,330.00	90.00	269.54	9,400.00	898.21	-2,947.49	3,063.18	0.00	0.00	0.00	
12,345.00	90.00	269.54	9,400.00	898.09	-2,962.49	3,077.89	0.00	0.00	0.00	
12,360.00	90.00	269.54	9,400.00	897.97	-2,977.49	3,092.61	0.00	0.00	0.00	
12,375.00	90.00	269.54	9,400.00	897.85	-2,992.49	3,107.32	0.00	0.00	0.00	
12,390.00	90.00	269.54	9,400.00	897.73	-3,007.49	3,122.04	0.00	0.00	0.00	
12,405.00	90.00	269.54	9,400.00	897.61	-3,022.49	3,136.75	0.00	0.00	0.00	
12,420.00	90.00	269.54	9,400.00	897.49	-3,037.49	3,151.47	0.00	0.00	0.00	
12,435.00	90.00	269.54	9,400.00	897.37	-3,052.49	3,166.18	0.00	0.00	0.00	
12,450.00	90.00	269.54	9,400.00	897.26	-3,067.49	3,180.90	0.00	0.00	0.00	
12,465.00	90.00	269.54	9,400.00	897.14	-3,082.49	3,195.61	0.00	0.00	0.00	
12,480.00	90.00	269.54	9,400.00	897.02	-3,097.49	3,210.33	0.00	0.00	0.00	
12,495.00	90.00	269.54	9,400.00	896.90	-3,112.49	3,225.04	0.00	0.00	0.00	
12,510.00	90.00	269.54	9,400.00	896.78	-3,127.48	3,239.76	0.00	0.00	0.00	
12,525.00	90.00	269.54	9,400.00	896.66	-3,142.48	3,254.47	0.00	0.00	0.00	
12,540.00	90.00	269.54	9,400.00	896.54	-3,157.48	3,269.19	0.00	0.00	0.00	
12,555.00	90.00	269.54	9,400.00	896.42	-3,172.48	3,283.90	0.00	0.00	0.00	
12,570.00	90.00	269.54	9,400.00	896.30	-3,187.48	3,298.62	0.00	0.00	0.00	
12,585.00	90.00	269.54	9,400.00	896.18	-3,202.48	3,313.33	0.00	0.00	0.00	
12,600.00	90.00	269.54	9,400.00	896.06	-3,217.48	3,328.05	0.00	0.00	0.00	
12,615.00	90.00	269.54	9,400.00	895.94	-3,232.48	3,342.76	0.00	0.00	0.00	

ConocoPhillips

Planning Report

<b>Database:</b>	EDT 17 Permian Prod	<b>Local Co-ordinate Reference:</b>	Well _ CAMPANA FED COM 901H - Slot EAST SLOT 1
<b>Company:</b>	DELAWARE BASIN WEST	<b>TVD Reference:</b>	GL @ 3210.00usft
<b>Project:</b>	EDDY COUNTY_DBW_NM_E	<b>MD Reference:</b>	GL @ 3210.00usft
<b>Site:</b>	CAMPANA STATE PROJECT	<b>North Reference:</b>	Grid
<b>Well:</b>	_CAMPANA FED COM 901H	<b>Survey Calculation Method:</b>	Minimum Curvature
<b>Wellbore:</b>	OWB		
<b>Design:</b>	PWP0		

Planned Survey										
Measured Depth (usft)	Inclination (°)	Azimuth (°)	Vertical Depth (usft)	+N/-S (usft)	+E/-W (usft)	Vertical Section (usft)	Dogleg Rate (°/100usft)	Build Rate (°/100usft)	Turn Rate (°/100usft)	
12,630.00	90.00	269.54	9,400.00	895.82	-3,247.48	3,357.48	0.00	0.00	0.00	
12,645.00	90.00	269.54	9,400.00	895.70	-3,262.48	3,372.19	0.00	0.00	0.00	
12,660.00	90.00	269.54	9,400.00	895.58	-3,277.48	3,386.91	0.00	0.00	0.00	
12,675.00	90.00	269.54	9,400.00	895.46	-3,292.48	3,401.62	0.00	0.00	0.00	
12,690.00	90.00	269.54	9,400.00	895.34	-3,307.48	3,416.34	0.00	0.00	0.00	
12,705.00	90.00	269.54	9,400.00	895.22	-3,322.48	3,431.05	0.00	0.00	0.00	
12,720.00	90.00	269.54	9,400.00	895.10	-3,337.48	3,445.77	0.00	0.00	0.00	
12,735.00	90.00	269.54	9,400.00	894.98	-3,352.48	3,460.48	0.00	0.00	0.00	
12,750.00	90.00	269.54	9,400.00	894.86	-3,367.48	3,475.20	0.00	0.00	0.00	
12,765.00	90.00	269.54	9,400.00	894.74	-3,382.48	3,489.91	0.00	0.00	0.00	
12,780.00	90.00	269.54	9,400.00	894.62	-3,397.48	3,504.63	0.00	0.00	0.00	
12,795.00	90.00	269.54	9,400.00	894.50	-3,412.48	3,519.34	0.00	0.00	0.00	
12,810.00	90.00	269.54	9,400.00	894.38	-3,427.48	3,534.06	0.00	0.00	0.00	
12,825.00	90.00	269.54	9,400.00	894.26	-3,442.47	3,548.77	0.00	0.00	0.00	
12,840.00	90.00	269.54	9,400.00	894.14	-3,457.47	3,563.49	0.00	0.00	0.00	
12,855.00	90.00	269.54	9,400.00	894.02	-3,472.47	3,578.20	0.00	0.00	0.00	
12,870.00	90.00	269.54	9,400.00	893.90	-3,487.47	3,592.92	0.00	0.00	0.00	
12,885.00	90.00	269.54	9,400.00	893.78	-3,502.47	3,607.63	0.00	0.00	0.00	
12,900.00	90.00	269.54	9,400.00	893.66	-3,517.47	3,622.35	0.00	0.00	0.00	
12,915.00	90.00	269.54	9,400.00	893.54	-3,532.47	3,637.06	0.00	0.00	0.00	
12,930.00	90.00	269.54	9,400.00	893.42	-3,547.47	3,651.78	0.00	0.00	0.00	
12,945.00	90.00	269.54	9,400.00	893.30	-3,562.47	3,666.49	0.00	0.00	0.00	
12,960.00	90.00	269.54	9,400.00	893.19	-3,577.47	3,681.21	0.00	0.00	0.00	
12,975.00	90.00	269.54	9,400.00	893.07	-3,592.47	3,695.92	0.00	0.00	0.00	
12,990.00	90.00	269.54	9,400.00	892.95	-3,607.47	3,710.64	0.00	0.00	0.00	
13,005.00	90.00	269.54	9,400.00	892.83	-3,622.47	3,725.35	0.00	0.00	0.00	
13,020.00	90.00	269.54	9,400.00	892.71	-3,637.47	3,740.07	0.00	0.00	0.00	
13,035.00	90.00	269.54	9,400.00	892.59	-3,652.47	3,754.78	0.00	0.00	0.00	
13,050.00	90.00	269.54	9,400.00	892.47	-3,667.47	3,769.50	0.00	0.00	0.00	
13,065.00	90.00	269.54	9,400.00	892.35	-3,682.47	3,784.21	0.00	0.00	0.00	
13,080.00	90.00	269.54	9,400.00	892.23	-3,697.47	3,798.93	0.00	0.00	0.00	
13,095.00	90.00	269.54	9,400.00	892.11	-3,712.47	3,813.64	0.00	0.00	0.00	
13,110.00	90.00	269.54	9,400.00	891.99	-3,727.47	3,828.36	0.00	0.00	0.00	
13,125.00	90.00	269.54	9,400.00	891.87	-3,742.47	3,843.07	0.00	0.00	0.00	
13,140.00	90.00	269.54	9,400.00	891.75	-3,757.46	3,857.79	0.00	0.00	0.00	
13,155.00	90.00	269.54	9,400.00	891.63	-3,772.46	3,872.50	0.00	0.00	0.00	
13,170.00	90.00	269.54	9,400.00	891.51	-3,787.46	3,887.22	0.00	0.00	0.00	
13,185.00	90.00	269.54	9,400.00	891.39	-3,802.46	3,901.93	0.00	0.00	0.00	
13,200.00	90.00	269.54	9,400.00	891.27	-3,817.46	3,916.65	0.00	0.00	0.00	
13,215.00	90.00	269.54	9,400.00	891.15	-3,832.46	3,931.36	0.00	0.00	0.00	
13,230.00	90.00	269.54	9,400.00	891.03	-3,847.46	3,946.08	0.00	0.00	0.00	
13,245.00	90.00	269.54	9,400.00	890.91	-3,862.46	3,960.79	0.00	0.00	0.00	
13,260.00	90.00	269.54	9,400.00	890.79	-3,877.46	3,975.51	0.00	0.00	0.00	
13,275.00	90.00	269.54	9,400.00	890.67	-3,892.46	3,990.22	0.00	0.00	0.00	
13,290.00	90.00	269.54	9,400.00	890.55	-3,907.46	4,004.94	0.00	0.00	0.00	
13,305.00	90.00	269.54	9,400.00	890.43	-3,922.46	4,019.65	0.00	0.00	0.00	
13,320.00	90.00	269.54	9,400.00	890.31	-3,937.46	4,034.37	0.00	0.00	0.00	
13,335.00	90.00	269.54	9,400.00	890.19	-3,952.46	4,049.09	0.00	0.00	0.00	
13,350.00	90.00	269.54	9,400.00	890.07	-3,967.46	4,063.80	0.00	0.00	0.00	
13,365.00	90.00	269.54	9,400.00	889.95	-3,982.46	4,078.52	0.00	0.00	0.00	
13,380.00	90.00	269.54	9,400.00	889.83	-3,997.46	4,093.23	0.00	0.00	0.00	
13,395.00	90.00	269.54	9,400.00	889.71	-4,012.46	4,107.95	0.00	0.00	0.00	
13,410.00	90.00	269.54	9,400.00	889.59	-4,027.46	4,122.66	0.00	0.00	0.00	

**ConocoPhillips**

Planning Report

<b>Database:</b>	EDT 17 Permian Prod	<b>Local Co-ordinate Reference:</b>	Well _ CAMPANA FED COM 901H - Slot EAST SLOT 1
<b>Company:</b>	DELAWARE BASIN WEST	<b>TVD Reference:</b>	GL @ 3210.00usft
<b>Project:</b>	EDDY COUNTY_DBW_NM_E	<b>MD Reference:</b>	GL @ 3210.00usft
<b>Site:</b>	CAMPANA STATE PROJECT	<b>North Reference:</b>	Grid
<b>Well:</b>	_CAMPANA FED COM 901H	<b>Survey Calculation Method:</b>	Minimum Curvature
<b>Wellbore:</b>	OWB		
<b>Design:</b>	PWP0		

Planned Survey										
Measured Depth (usft)	Inclination (°)	Azimuth (°)	Vertical Depth (usft)	+N/-S (usft)	+E/-W (usft)	Vertical Section (usft)	Dogleg Rate (°/100usft)	Build Rate (°/100usft)	Turn Rate (°/100usft)	
13,425.00	90.00	269.54	9,400.00	889.47	-4,042.46	4,137.38	0.00	0.00	0.00	
13,440.00	90.00	269.54	9,400.00	889.35	-4,057.46	4,152.09	0.00	0.00	0.00	
13,455.00	90.00	269.54	9,400.00	889.23	-4,072.45	4,166.81	0.00	0.00	0.00	
13,470.00	90.00	269.54	9,400.00	889.12	-4,087.45	4,181.52	0.00	0.00	0.00	
13,485.00	90.00	269.54	9,400.00	889.00	-4,102.45	4,196.24	0.00	0.00	0.00	
13,500.00	90.00	269.54	9,400.00	888.88	-4,117.45	4,210.95	0.00	0.00	0.00	
13,515.00	90.00	269.54	9,400.00	888.76	-4,132.45	4,225.67	0.00	0.00	0.00	
13,530.00	90.00	269.54	9,400.00	888.64	-4,147.45	4,240.38	0.00	0.00	0.00	
13,545.00	90.00	269.54	9,400.00	888.52	-4,162.45	4,255.10	0.00	0.00	0.00	
13,560.00	90.00	269.54	9,400.00	888.40	-4,177.45	4,269.81	0.00	0.00	0.00	
13,575.00	90.00	269.54	9,400.00	888.28	-4,192.45	4,284.53	0.00	0.00	0.00	
13,590.00	90.00	269.54	9,400.00	888.16	-4,207.45	4,299.24	0.00	0.00	0.00	
13,605.00	90.00	269.54	9,400.00	888.04	-4,222.45	4,313.96	0.00	0.00	0.00	
13,620.00	90.00	269.54	9,400.00	887.92	-4,237.45	4,328.67	0.00	0.00	0.00	
13,635.00	90.00	269.54	9,400.00	887.80	-4,252.45	4,343.39	0.00	0.00	0.00	
13,650.00	90.00	269.54	9,400.00	887.68	-4,267.45	4,358.10	0.00	0.00	0.00	
13,665.00	90.00	269.54	9,400.00	887.56	-4,282.45	4,372.82	0.00	0.00	0.00	
13,680.00	90.00	269.54	9,400.00	887.44	-4,297.45	4,387.53	0.00	0.00	0.00	
13,695.00	90.00	269.54	9,400.00	887.32	-4,312.45	4,402.25	0.00	0.00	0.00	
13,710.00	90.00	269.54	9,400.00	887.20	-4,327.45	4,416.96	0.00	0.00	0.00	
13,725.00	90.00	269.54	9,400.00	887.08	-4,342.45	4,431.68	0.00	0.00	0.00	
13,740.00	90.00	269.54	9,400.00	886.96	-4,357.45	4,446.39	0.00	0.00	0.00	
13,755.00	90.00	269.54	9,400.00	886.84	-4,372.45	4,461.11	0.00	0.00	0.00	
13,770.00	90.00	269.54	9,400.00	886.72	-4,387.44	4,475.82	0.00	0.00	0.00	
13,785.00	90.00	269.54	9,400.00	886.60	-4,402.44	4,490.54	0.00	0.00	0.00	
13,800.00	90.00	269.54	9,400.00	886.48	-4,417.44	4,505.25	0.00	0.00	0.00	
13,815.00	90.00	269.54	9,400.00	886.36	-4,432.44	4,519.97	0.00	0.00	0.00	
13,830.00	90.00	269.54	9,400.00	886.24	-4,447.44	4,534.68	0.00	0.00	0.00	
13,845.00	90.00	269.54	9,400.00	886.12	-4,462.44	4,549.40	0.00	0.00	0.00	
13,860.00	90.00	269.54	9,400.00	886.00	-4,477.44	4,564.11	0.00	0.00	0.00	
13,875.00	90.00	269.54	9,400.00	885.88	-4,492.44	4,578.83	0.00	0.00	0.00	
13,890.00	90.00	269.54	9,400.00	885.76	-4,507.44	4,593.54	0.00	0.00	0.00	
13,905.00	90.00	269.54	9,400.00	885.64	-4,522.44	4,608.26	0.00	0.00	0.00	
13,920.00	90.00	269.54	9,400.00	885.52	-4,537.44	4,622.97	0.00	0.00	0.00	
13,935.00	90.00	269.54	9,400.00	885.40	-4,552.44	4,637.69	0.00	0.00	0.00	
13,950.00	90.00	269.54	9,400.00	885.28	-4,567.44	4,652.40	0.00	0.00	0.00	
13,965.00	90.00	269.54	9,400.00	885.16	-4,582.44	4,667.12	0.00	0.00	0.00	
13,980.00	90.00	269.54	9,400.00	885.05	-4,597.44	4,681.83	0.00	0.00	0.00	
13,995.00	90.00	269.54	9,400.00	884.93	-4,612.44	4,696.55	0.00	0.00	0.00	
14,010.00	90.00	269.54	9,400.00	884.81	-4,627.44	4,711.26	0.00	0.00	0.00	
14,025.00	90.00	269.54	9,400.00	884.69	-4,642.44	4,725.98	0.00	0.00	0.00	
14,040.00	90.00	269.54	9,400.00	884.57	-4,657.44	4,740.69	0.00	0.00	0.00	
14,050.81	90.00	269.54	9,400.00	884.48	-4,668.25	4,751.30	0.00	0.00	0.00	

**ConocoPhillips**

Planning Report

<b>Database:</b>	EDT 17 Permian Prod	<b>Local Co-ordinate Reference:</b>	Well _CAMPANA FED COM 901H - Slot EAST SLOT 1
<b>Company:</b>	DELAWARE BASIN WEST	<b>TVD Reference:</b>	GL @ 3210.00usft
<b>Project:</b>	EDDY COUNTY_DBW_NM_E	<b>MD Reference:</b>	GL @ 3210.00usft
<b>Site:</b>	CAMPANA STATE PROJECT	<b>North Reference:</b>	Grid
<b>Well:</b>	_CAMPANA FED COM 901H	<b>Survey Calculation Method:</b>	Minimum Curvature
<b>Wellbore:</b>	OWB		
<b>Design:</b>	PWP0		

Design Targets									
Target Name	Dip Angle	Dip Dir.	TVD	+N/-S	+E/-W	Northing	Easting	Latitude	Longitude
- hit/miss target	(°)	(°)	(usft)	(usft)	(usft)	(usft)	(usft)		
- Shape									
FTP_CAMPANA FED C(	0.00	0.00	9,400.00	922.61	109.55	455,560.07	523,983.85	32° 15' 8.740 N	104° 15' 20.705 W
- plan misses target center by 197.77usft at 9375.00usft MD (9259.93 TVD, 921.50 N, -30.06 E)									
- Circle (radius 50.00)									
LTP_CAMPANA FED C(	90.00	269.54	9,400.00	885.52	-4,538.25	455,522.98	519,336.05	32° 15' 8.403 N	104° 16' 14.830 W
- plan hits target center									
- Circle (radius 50.00)									
PBHL_CAMPANA FED (	0.00	89.54	9,400.00	884.48	-4,668.25	455,521.94	519,206.05	32° 15' 8.393 N	104° 16' 16.344 W
- plan hits target center									
- Rectangle (sides W100.00 H4,778.00 D20.00)									

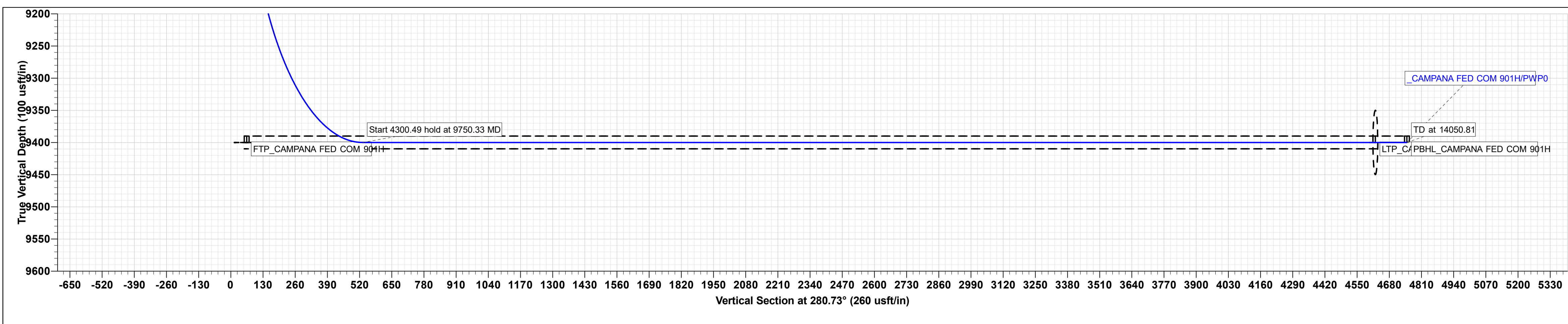
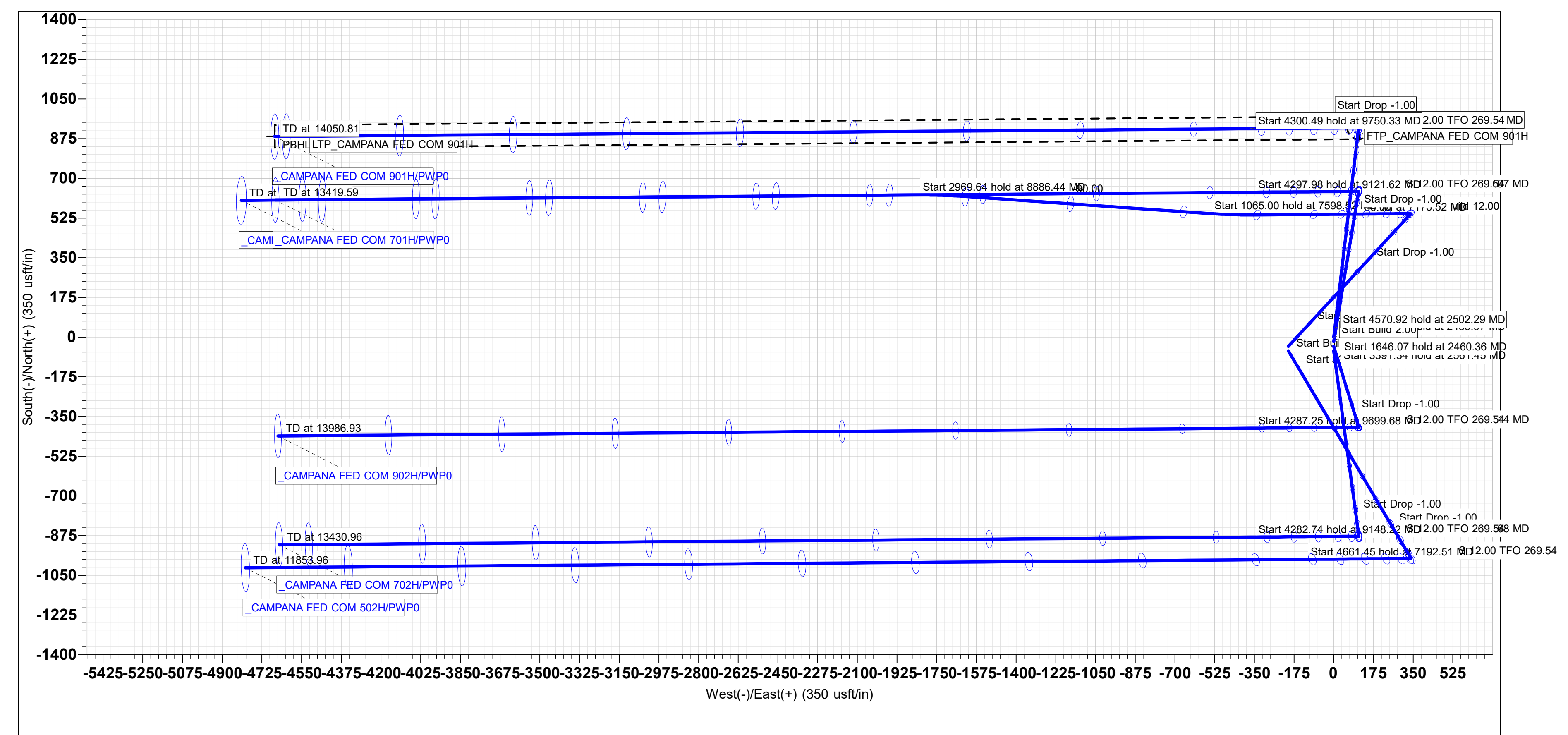
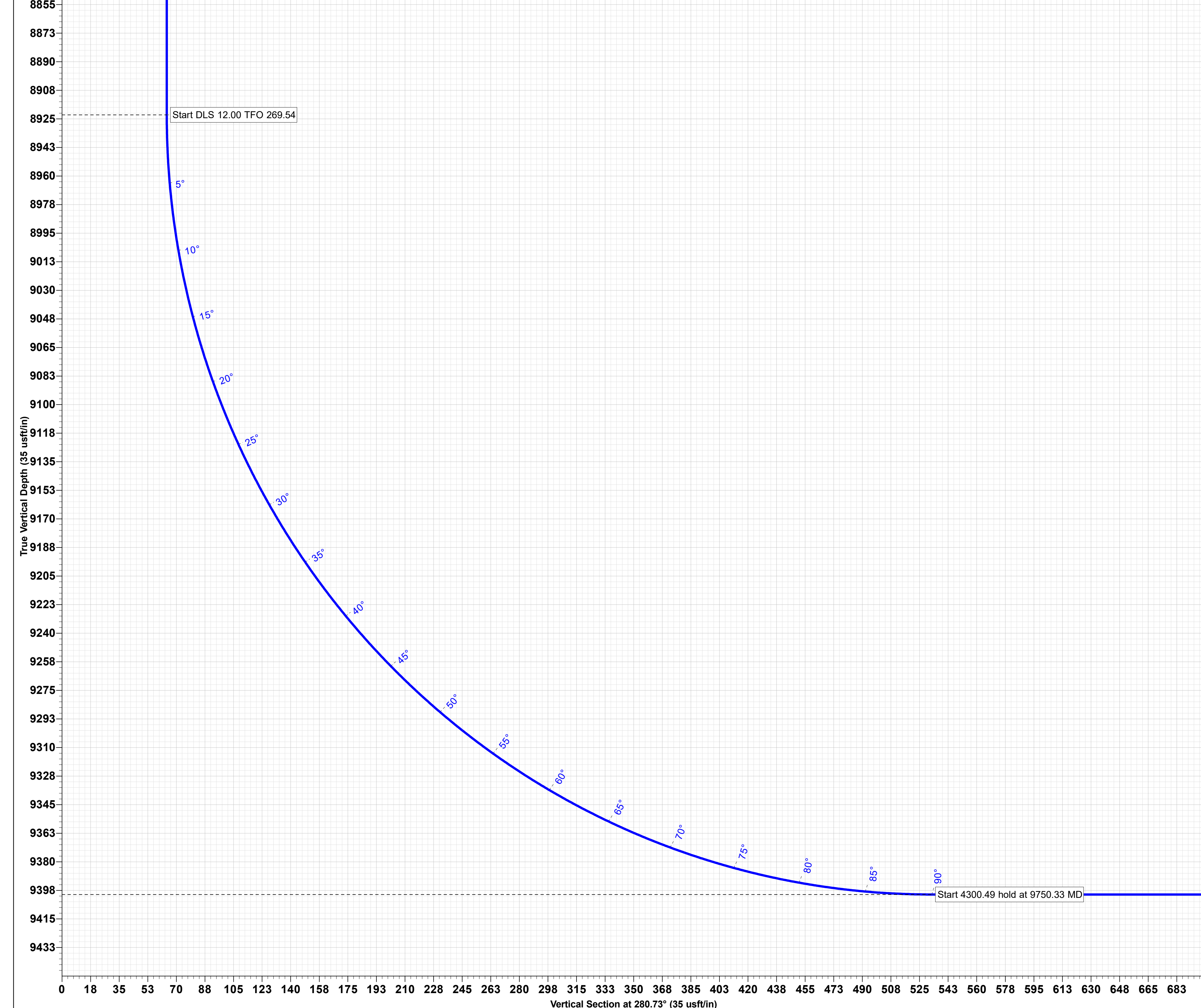
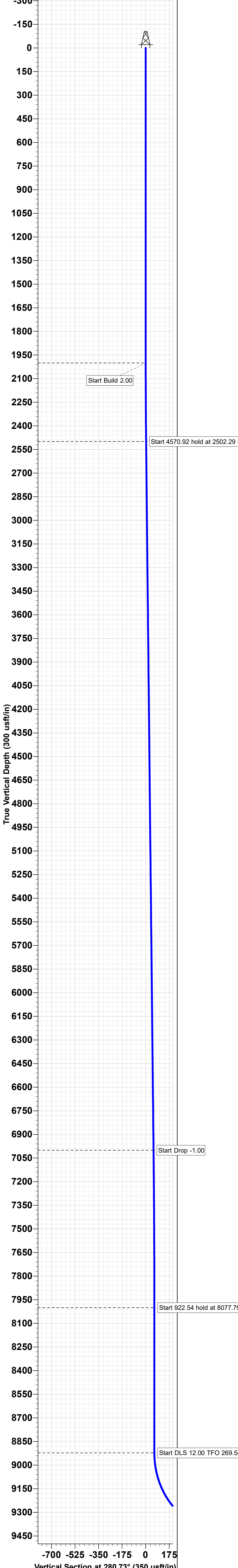
Casing Points					
Measured Depth	Vertical Depth	Name	Casing Diameter	Hole Diameter	
(usft)	(usft)		(")	(")	
14,050.82	9,400.00	5-1/2" Production Casing	5-1/2	6	



Project: EDDY COUNTY\_DBW\_NM\_E  
 Site: CAMPANA STATE PROJECT  
 Well: CAMPANA FED COM 901H  
 Wellbore: QWB  
 Design: PWP0  
 GL: 3210.00  
 GL @ 3210.00usft

SECTION DETAILS

MD	Inc	Azi	TVD	+N/-S	+E/-W	Dleg	TFace	VSect
0.00	0.00	0.00	0.00	0.00	0.00	0.00	0.00	0.00
2000.00	0.00	0.00	2000.00	0.00	0.00	0.00	0.00	0.00
2502.29	10.05	6.77	2499.72	43.61	5.18	2.00	6.77	3.03
7073.21	10.05	6.77	7000.56	835.38	99.19	0.00	0.00	58.05
8077.79	0.00	0.00	8000.00	922.61	109.55	1.00	180.00	64.11
9000.33	0.00	0.00	8922.54	922.61	109.55	0.00	0.00	64.11
9750.33	90.00	269.54	9400.00	918.80	-367.90	12.00	269.54	532.51
14050.81	90.00	269.54	9400.00	884.48	-4668.25	0.00	0.00	4751.30



## Campana State Com 901H

### Casing and Cement

<u>String</u>	<u>Hole Size</u>	<u>Csg OD</u>	<u>PPF</u>	<u>Depth</u>	<u>Sx Cement</u>	<u>TOC</u>
Surface	14.75"	10.75"	40#	300'	140	0'
Intermediate	9.875"	8.625"	32#	9,180'	950	0'
Production	7.875"	5.5"	20#	14,051	1100	8,680'

### Well Plan

Drill 14-3/4" hole to ~300' w/ fresh water spud mud. Run 10-3/4" 40# J55 BTC casing to TD and cement to surface in one stage.

Drill 9-7/8" hole to ~9,180' with cut brine WBM. Run 8-5/8" 32# P110 W441 casing to TD and cement to surface in one stage.

Drill 7-7/8" vertical hole, curve & lateral to 14,051' with OBM. Run 5-1/2" 20# P110 BTC casing to TD and cement to 8,680' in one stage.

### Well Control

<u>Type</u>	<u>Working Pressure</u>	<u>Test Pressure</u>	<u>Manufacture</u>
Double Ram	5000 psi	5000 psi	StreamFlo

Marathon Oil Permian LLC

State of New Mexico  
Energy, Minerals and Natural Resources Department

Submit Electronically  
Via E-permitting

Oil Conservation Division  
1220 South St. Francis Dr.  
Santa Fe, NM 87505

### NATURAL GAS MANAGEMENT PLAN

This Natural Gas Management Plan must be submitted with each Application for Permit to Drill (APD) for a new or recompleted well.

#### Section 1 – Plan Description

Effective May 25, 2021

**I. Operator:** Marathon Oil Permian LLC                      OGRID: 336452                      Date: 2/23/2026

**II. Type:**  Original    Amendment due to  19.15.27.9.D(6)(a) NMAC  19.15.27.9.D(6)(b) NMAC  Other.

If Other, please describe: \_\_\_\_\_

**III. Well(s):** Provide the following information for each new or recompleted well or set of wells proposed to be drilled or proposed to be recompleted from a single well pad or connected to a central delivery point.

Well Name	API	ULSTR	Footages	Anticipated Oil BBL/D	Anticipated Gas MCF/D	Anticipated Produced Water BBL/D
Campana State Com 901H	30-015-	1-2-24S-26E	1302 FNL & 440 FEL	± 264	± 2649	± 1241

**IV. Central Delivery Point Name:** \_\_\_\_\_ [See 19.15.27.9(D)(1) NMAC]

**V. Anticipated Schedule:** Provide the following information for each new or recompleted well or set of wells proposed to be drilled or proposed to be recompleted from a single well pad or connected to a central delivery point.

Well Name	API	Spud Date	TD Reached Date	Completion Commencement Date	Initial Flow Back Date	First Production Date
Campana State Com 901H	Pending	3/2/2026	± 25 days from spud	6/30/2026	7/10/2026	7/15/2026

**VI. Separation Equipment:**  Attach a complete description of how Operator will size separation equipment to optimize gas capture.

**VII. Operational Practices:**  Attach a complete description of the actions Operator will take to comply with the requirements of Subsection A through F of 19.15.27.8 NMAC.

**VIII. Best Management Practices:**  Attach a complete description of Operator’s best management practices to minimize venting during active and planned maintenance.

**Section 2 – Enhanced Plan**  
**EFFECTIVE APRIL 1, 2022**

Beginning April 1, 2022, an operator that is not in compliance with its statewide natural gas capture requirement for the applicable reporting area must complete this section.

Operator certifies that it is not required to complete this section because Operator is in compliance with its statewide natural gas capture requirement for the applicable reporting area.

**IX. Anticipated Natural Gas Production:**

Well	API	Anticipated Average Natural Gas Rate MCF/D	Anticipated Volume of Natural Gas for the First Year MCF

**X. Natural Gas Gathering System (NGGS):**

Operator	System	ULSTR of Tie-in	Anticipated Gathering Start Date	Available Maximum Daily Capacity of System Segment Tie-in

**XI. Map.**  Attach an accurate and legible map depicting the location of the well(s), the anticipated pipeline route(s) connecting the production operations to the existing or planned interconnect of the natural gas gathering system(s), and the maximum daily capacity of the segment or portion of the natural gas gathering system(s) to which the well(s) will be connected.

**XII. Line Capacity.** The natural gas gathering system  will  will not have capacity to gather 100% of the anticipated natural gas production volume from the well prior to the date of first production.

**XIII. Line Pressure.** Operator  does  does not anticipate that its existing well(s) connected to the same segment, or portion, of the natural gas gathering system(s) described above will continue to meet anticipated increases in line pressure caused by the new well(s).

Attach Operator’s plan to manage production in response to the increased line pressure.

**XIV. Confidentiality:**  Operator asserts confidentiality pursuant to Section 71-2-8 NMSA 1978 for the information provided in Section 2 as provided in Paragraph (2) of Subsection D of 19.15.27.9 NMAC, and attaches a full description of the specific information for which confidentiality is asserted and the basis for such assertion.

### **Section 3 - Certifications**

**Effective May 25, 2021**

Operator certifies that, after reasonable inquiry and based on the available information at the time of submittal:

Operator will be able to connect the well(s) to a natural gas gathering system in the general area with sufficient capacity to transport one hundred percent of the anticipated volume of natural gas produced from the well(s) commencing on the date of first production, taking into account the current and anticipated volumes of produced natural gas from other wells connected to the pipeline gathering system; or

Operator will not be able to connect to a natural gas gathering system in the general area with sufficient capacity to transport one hundred percent of the anticipated volume of natural gas produced from the well(s) commencing on the date of first production, taking into account the current and anticipated volumes of produced natural gas from other wells connected to the pipeline gathering system.

***If Operator checks this box, Operator will select one of the following:***

**Well Shut-In.**  Operator will shut-in and not produce the well until it submits the certification required by Paragraph (4) of Subsection D of 19.15.27.9 NMAC; or

**Venting and Flaring Plan.**  Operator has attached a venting and flaring plan that evaluates and selects one or more of the potential alternative beneficial uses for the natural gas until a natural gas gathering system is available, including:

- (a) power generation on lease;
- (b) power generation for grid;
- (c) compression on lease;
- (d) liquids removal on lease;
- (e) reinjection for underground storage;
- (f) reinjection for temporary storage;
- (g) reinjection for enhanced oil recovery;
- (h) fuel cell production; and
- (i) other alternative beneficial uses approved by the division.

### **Section 4 - Notices**

1. If, at any time after Operator submits this Natural Gas Management Plan and before the well is spud:

(a) Operator becomes aware that the natural gas gathering system it planned to connect the well(s) to has become unavailable or will not have capacity to transport one hundred percent of the production from the well(s), no later than 20 days after becoming aware of such information, Operator shall submit for OCD's approval a new or revised venting and flaring plan containing the information specified in Paragraph (5) of Subsection D of 19.15.27.9 NMAC; or

(b) Operator becomes aware that it has, cumulatively for the year, become out of compliance with its baseline natural gas capture rate or natural gas capture requirement, no later than 20 days after becoming aware of such information, Operator shall submit for OCD's approval a new or revised Natural Gas Management Plan for each well it plans to spud during the next 90 days containing the information specified in Paragraph (2) of Subsection D of 19.15.27.9 NMAC, and shall file an update for each Natural Gas Management Plan until Operator is back in compliance with its baseline natural gas capture rate or natural gas capture requirement.

2. OCD may deny or conditionally approve an APD if Operator does not make a certification, fails to submit an adequate venting and flaring plan which includes alternative beneficial uses for the anticipated volume of natural gas produced, or if OCD determines that Operator will not have adequate natural gas takeaway capacity at the time a well will be spud.

## VI. Separation Equipment

How Operator will size separation equipment to optimize gas capture:

All ConocoPhillips production facility equipment will be sized per industry standards (API 12J) with adequate retention time to effectively separate all phases of production. Each project will take into consideration the number of wells and type curves for each formation pool to ensure adequate facility capacity. Design considerations will also include review of all piping, tanks, VRU's and associated equipment to ensure optimized gas capture minimized risk of release.

## VII. Operational Practices

Actions Operator will take to comply with the requirements below:

### B. Drilling Operations

- During drilling, flare stacks will be located a minimum of 100 feet from the nearest surface hole location. All gas is captured or combusted. If an emergency or malfunction occurs, gas will be flared or vented for public health, safety, and the environment and be properly reported to the NMOCD pursuant to 19.15.27.8.G.
- Measure or estimate the volume of natural gas that is vented, flared or beneficially used during drilling, completion and production operations, regardless of the reason or authorization for such venting or flaring.

### C. Completion Operations

- During completion operations, operator does not produce oil or gas but maintains adequate well control through completion operations.
- Individual well test separators will be set to properly separate gas and liquids. A temporary test separator will be utilized initially to process volumes. In addition, separators will be tied into flowback tanks which will be tied into the gas processing equipment for sales down a pipeline.

### D. Venting and flaring during production operations

- During each phase of well life (drilling, completion and production) of a ConocoPhillips well, COP personnel will follow all necessary procedures to ensure both the operation and the equipment are within the NMAC 19.15.27.8 Subsection D guidelines.
- During well operations that require unloading of the well to atmospheric pressure, all reasonable actions will be taken to minimize vented gas
- Through the life of the well all flaring shall be measured, and venting events quantified using the data available and industry best practice.

### E. Performance standards for separation, storage tank and flare equipment

- All storage tanks and separation equipment are designed minimize risk of liquid or vapor release and optimize gas capture. This includes automation for automatic gauging and pressure monitoring.

- All flare stacks are equipped with auto ignition devices and/or continuous pilots and are designed to operate at maximum combustion efficiency pursuant NMAC 19.15.27.8 Subsection E. Flares will follow COP spacing guidelines to ensure they are a safe distance from combustibles and operations equipment.
- COP personnel will conduct routine AVO inspections on a regular basis per NMAC 19.15.27.8 Subsection E guidelines.

F. Measurement of vented and flared natural gas.

- Measurement equipment will be installed to quantify gas flared during drilling, completion and production of the well.
- All measurement devices installed will meet accuracy ratings per AGA and API standards.
- Measurement devices will be installed without manifolds that allow diversion of gas around the metering element, except for the sole purpose of inspection of servicing the measurement device.

**VIII. Best Management Practices**

- Operator will curtail or shut in production, within reasonable limits, during upset conditions to minimize venting and flaring.
- When feasible, Operator will use equipment to capture gas that would otherwise be vented or flared.
- During completions and production operations Operator will minimize blowdowns to atmosphere
- When feasible, Operator will use electric or air actuated equipment to reduce bleed emissions

I certify that, after reasonable inquiry, the statements in and attached to this Natural Gas Management Plan are true and correct to the best of my knowledge and acknowledge that a false statement may be subject to civil and criminal penalties under the Oil and Gas Act.

Signature: <i>Mayte Reyes</i>
Printed Name: Mayte Reyes
Title: Sr. Regulatory Coordinator
E-mail Address: mayte.x.reyes@conocophillips.com
Date: 2/23/2026
Phone: 575-748-6945
<b>OIL CONSERVATION DIVISION</b> <b>(Only applicable when submitted as a standalone form)</b>
Approved By:
Title:
Approval Date:
Conditions of Approval:

# Anticipated Production Decline Curve

