

Submit 1 Copy To Appropriate District Office

State of New Mexico
Energy, Minerals and Natural Resources

Form C-103
Revised July 18, 2013

District I - (575) 393-6161
1625 N. French Dr., Hobbs, NM 88240
District II - (575) 748-1283
811 S. First St., Artesia, NM 88210
District III - (505) 334-6178
1000 Rio Brazos Rd. Aztec, NM 87410
District IV - (505) 476-3460
1220 S. St. Francis Dr., Santa Fe, NM 87505

OIL CONSERVATION DIVISION
1220 South St. Francis Dr.
Santa Fe, NM 87505

WELL API NO. 30-015-00721
5. Indicate Type of Lease STATE [x] FEE [ ]
6. State Oil & Gas Lease No. B-9299
7. Lease Name or Unit Agreement Name SOUTH RED LAKE II UNIT
8. Well Number #36
9. OGRID Numer 330522
10. Pool Name or Wildcat RED LAKE ; QUEEN-GRAYBURG-SA

SUNDRY NOTICES AND REPORTS ON WELLS
(DO NOT USE THIS FORM FOR PROPOSALS TO DRILL OR DEEPEN OR PLUG BACK TO A DIFFERENT RESERVIOR. USE "APPLICATION FOR PERMIT" (FORM C-101) FOR SUCH PROPOSALS.)

1. Type of Well: Oil Well [x] Gas Well [ ] Other [ ]
2. Name of Operator ACACIA OPERATING COMPANY, LLC / APACHE CORPORATION (873)
3. Address of Operator 505 N. BIG SPRING ST., SUITE 303, MIDLAND, TX 79701
4. Well Location Unit Letter A : 330' feet from the N line and 990' feet from t E line Section 2 Township 18S Range 27E NMPM County EDDY
11. Elevation (Show whether DR, RKB, RT, GR, etc.) 3620' GL

12. Check Appropriate Box To Indicate Nature of Notice, Report, or Other Data

NOTICE OF INTENTION TO:
PERFORM REMEDIAL WORK [ ] PLUG AND ABANDON [x]
TEMPORARILY ABANDON [ ] CHANGE PLANS [ ]
PULL OR ALTER CASING [ ] MULTIPLE COMPL [ ]
DOWNHOLE COMMINGLE [ ]
CLOSED-LOOP SYSTEM [ ]
OTHER: [ ]
SUBSEQUENT REPORT OF:
REMEDIAL WORK [ ] ALTERING CASING [ ]
COMMENCE DRILLING OPNS. [ ] P AND A [ ]
CASING/CEMENT JOB [ ]
OTHER: [ ]

13. Describe proposed or completed operations. (Clearly state all pertinent details, and give pertinent dates, including estimated date of starting any proposed work.) SEE RULE 19.15.7.14 NMAC. For Multiple Completions: Attach wellbore diagram or proposed completion or recompletion.

Apache Corporation, has agreed, in good faith, to the NM State Land Office request to plug this well by the defunct operator - Acacia Operating Company, LLC (330522). Apache Corporation proposes to P&A the above mentioned well by the attached procedure. A closed loop system will be used for all fluids from this wellbore and disposed of required by the OCD Rule 19.15.7.14 NMAC.

Spud Date: 10/21/1941

Rig Release Date:

I hereby certify that the information above is true and complete to the best of my knowledge and belief.

SIGNATURE Leland Blackmon TITLE P&A MANAGER, USON DATE 2/24/26

Type or print name Leland Blackmon E-mail add. leland.blackmon@apachecorp.com PHONE: 432-210-3876

For State Use Only

APPROVED BY: TITLE DATE

Conditions of Approval (if any):





LEASE NAME	SOUTH RED LAKE II
WELL #	36
API #	30-015-00721
COUNTY	EDDY, NM

PROPOSED PROCEDURE

PLUG #1  
 MIRU P&A RIG, POOH & LD PROD EQUIP. RIH & SET CIBP @ 1175'. **RU WIRELINE AND RUN CBL FROM 1175' TO SURF. SEND RESULTS TO NMOCD.** CIRC W/MLF, & SPOT 45 SX CLASS "C" CMT FROM 1175'-925'. (GRAYBURG, 7" SHOE & QUEEN)

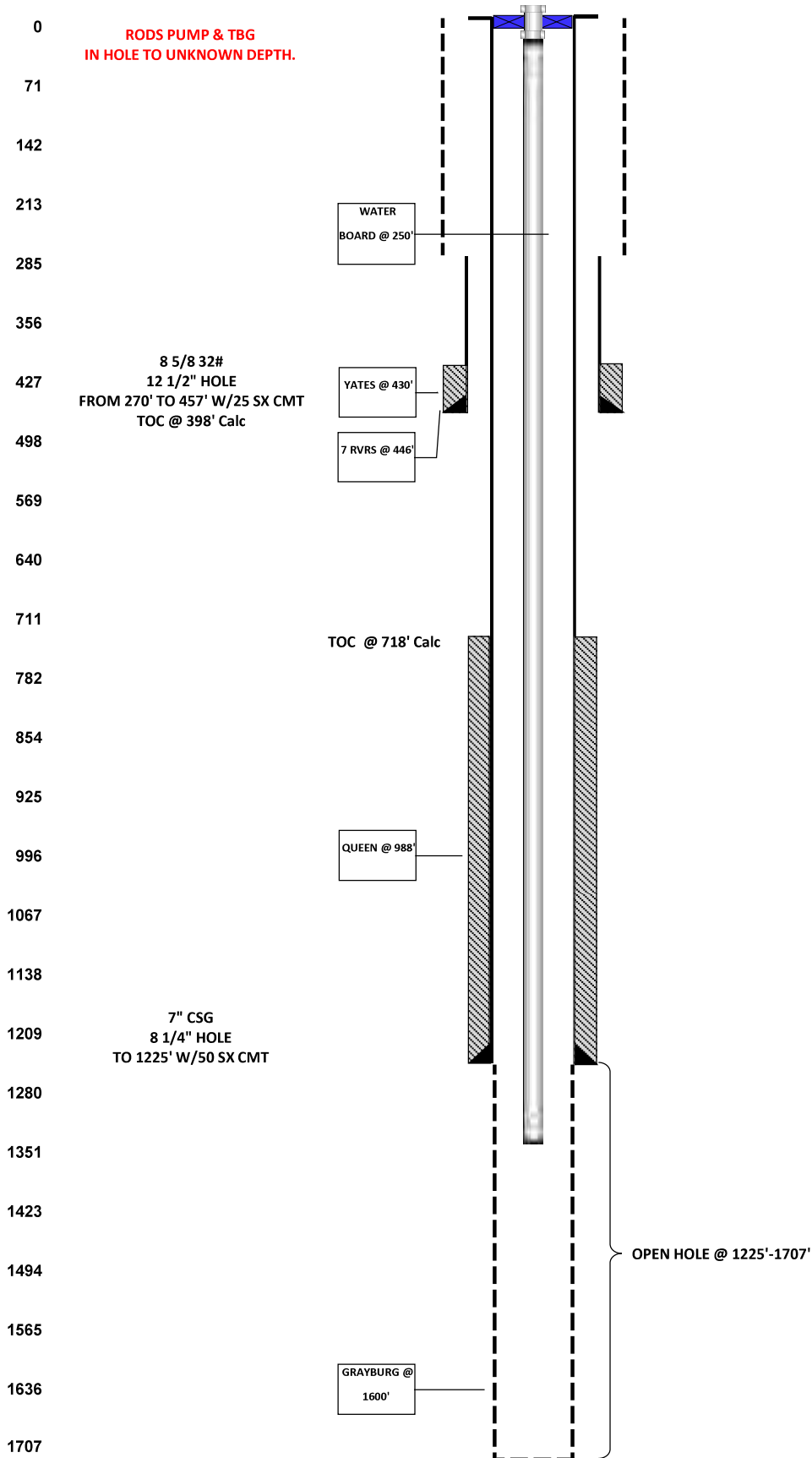
PLUG #2  
 PUH & PERF @ 550' & SQZ 115 SX CLASS "C" CMT FROM 550'-380", WOC/TAG. (7 RVRS, YATES & 8 5/8" SHOE)

PLUG #3  
 PUH & PERF @ 300' & SQZ 210 SX CLASS "C" CMT FROM 300' & CIRC TO SURF. RDMO, CUT OFF WH, INSTALL DRYHOLE MARKER, CLEAN LOCATION. TURN OVER TO RECLAMATION. (WATER BOARD & SURF)



LEASE NAME	South Red Lake II Unit
WELL #	36
API #	30-015-00721
COUNTY	Eddy, NM

FORM TOPS CURRENT WELLBORE CONDITIONS



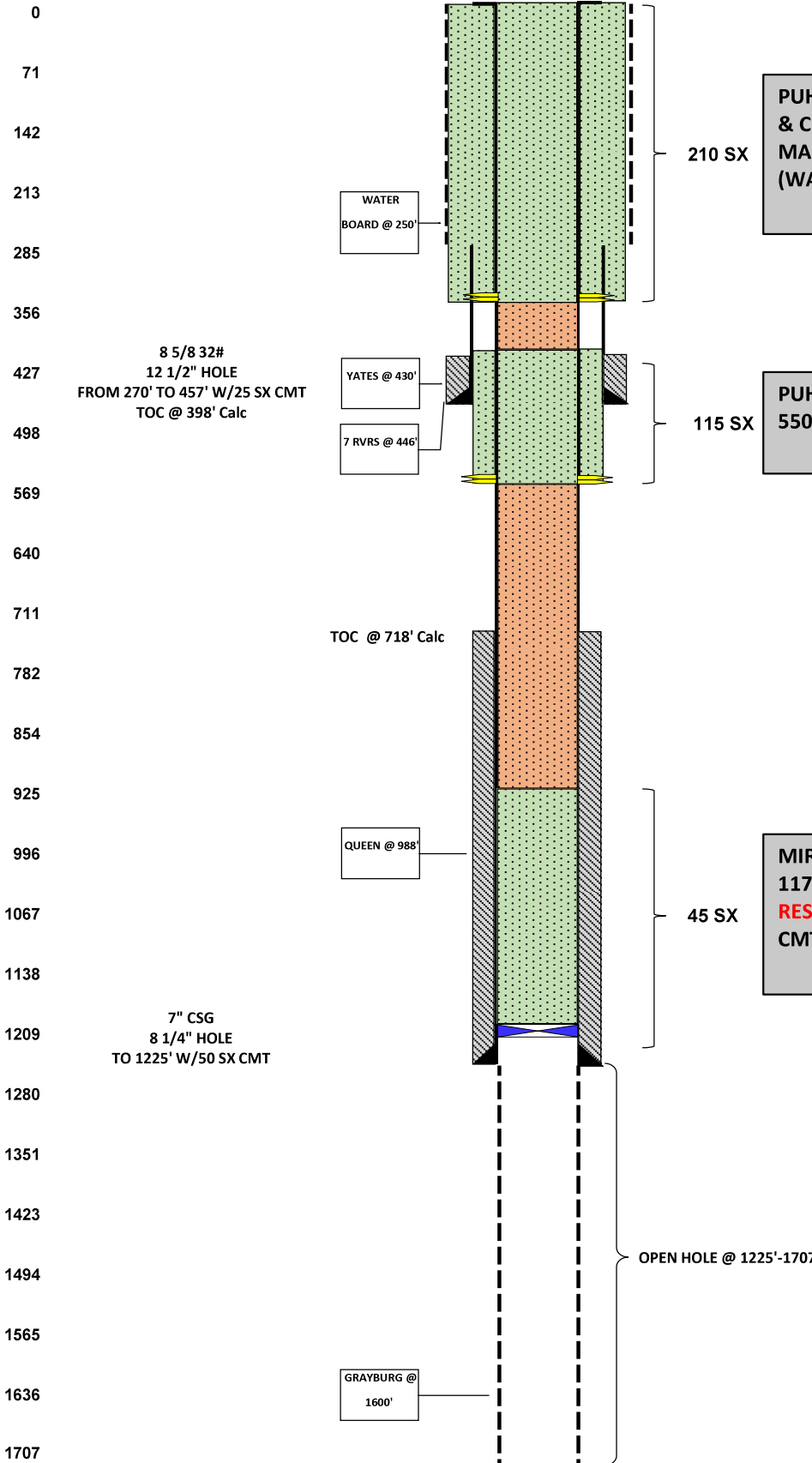


LEASE NAME	South Red Lake II Unit
WELL #	36
API #	30-015-00721
COUNTY	Eddy, NM

WELL BORE INFO.

FORM TOPS

PROPOSED PROCEDURE



PUH & PERF @ 300' & SQZ 210 SX CLASS "C" CMT FROM 300' & CIRC TO SURF. RDMO, CUT OFF WH, INSTALL DRYHOLE MARKER, CLEAN LOCATION. TURN OVER TO RECLAMATION. (WATER BOARD & SURF)

PUH & PERF @ 550' & SQZ 115 SX CLASS "C" CMT FROM 550'-380', WOC/TAG. (7 RVRS, YATES & SHOE)

MIRU P&A RIG. POOH & LD PROD EQUIP. RIH & SET CIBP @ 1175'. RIH W/WL AND RUN CBL FROM 1175' TO SURF. SEND RESULTS TO NMOCD. CIRC W/MLF, & SPOT 45 SX CLASS "C" CMT FROM 1175'-925'. (GRAYBURG & QUEEN)

Sante Fe Main Office  
Phone: (505) 476-3441

General Information  
Phone: (505) 629-6116

Online Phone Directory  
<https://www.emnrd.nm.gov/ocd/contact-us>

**State of New Mexico**  
**Energy, Minerals and Natural Resources**  
**Oil Conservation Division**  
**1220 S. St Francis Dr.**  
**Santa Fe, NM 87505**

CONDITIONS

Action 557153

**CONDITIONS**

Operator: APACHE CORPORATION 303 Veterans Airpark Ln Midland, TX 79705	OGRID: 873
	Action Number: 557153
	Action Type: [C-103] NOI Plug & Abandon (C-103F)

**CONDITIONS**

Created By	Condition	Condition Date
loren.diede	Notify the OCD inspection supervisor via email 24 hours prior to beginning Plug & Abandon (P&A) operations.	2/26/2026
loren.diede	NMOCD has picked the 7 Rivers formation top to be at 750'. Either modify the Plug 1 (Queen) to cover the 7 Rivers formation top to 700' or Add a plug to cover 7 Rivers top with a plug from 800' to 650'.	2/26/2026
loren.diede	Submit photo and GPS coordinates of the P&A marker with the C 103P subsequent P&A report. The API# on the marker must be clearly legible.	2/26/2026