

District I - (575) 393-6161
1625 N. French Dr., Hobbs, NM 88240
District II - (575) 748-1283
811 S. First St., Artesia, NM 88210
District III - (505) 334-6178
1000 Rio Brazos Rd., Aztec, NM 87410
District IV - (505) 476-3460
1220 S. St. Francis Dr., Santa Fe, NM
87505

OIL CONSERVATION DIVISION
1220 South St. Francis Dr.
Santa Fe, NM 87505

WELL API NO. 30-025-20931
5. Indicate Type of Lease STATE <input type="checkbox"/> FEE <input checked="" type="checkbox"/>
6. State Oil & Gas Lease No. 027317
7. Lease Name or Unit Agreement Name H.H. Harris
8. Well Number #002
9. OGRID Number 164557
10. Pool name or Wildcat Wolfcamp, Bronco

SUNDRY NOTICES AND REPORTS ON WELLS
(DO NOT USE THIS FORM FOR PROPOSALS TO DRILL OR TO DEEPEN OR PLUG BACK TO A DIFFERENT RESERVOIR. USE "APPLICATION FOR PERMIT" (FORM C-101) FOR SUCH PROPOSALS.)

1. Type of Well: Oil Well Gas Well Other

2. Name of Operator
Scorpion Oil & Gas, LLC
4779 South Main Street, Stafford, TX 77477

4. Well Location
Unit Letter **O** : **650** feet from the **S** line and **1800** feet from the **E** line
Section **35** Township **12S** Range **38E** NMPM County **Lea**

11. Elevation (Show whether DR, RKB, RT, GR, etc.)
3788' GL

12. Check Appropriate Box to Indicate Nature of Notice, Report or Other Data

NOTICE OF INTENTION TO:		SUBSEQUENT REPORT OF:	
PERFORM REMEDIAL WORK <input type="checkbox"/>	PLUG AND ABANDON <input checked="" type="checkbox"/>	REMEDIAL WORK <input type="checkbox"/>	ALTERING CASING <input type="checkbox"/>
TEMPORARILY ABANDON <input type="checkbox"/>	CHANGE PLANS <input type="checkbox"/>	COMMENCE DRILLING OPNS. <input type="checkbox"/>	P AND A <input type="checkbox"/>
PULL OR ALTER CASING <input type="checkbox"/>	MULTIPLE COMPL <input type="checkbox"/>	CASING/CEMENT JOB <input type="checkbox"/>	
DOWNHOLE COMMINGLE <input type="checkbox"/>			
CLOSED-LOOP SYSTEM <input type="checkbox"/>			
OTHER: <input type="checkbox"/>		OTHER: <input type="checkbox"/>	

13. Describe proposed or completed operations. (Clearly state all pertinent details, and give pertinent dates, including estimated date of starting any proposed work). SEE RULE 19.15.7.14 NMAC. For Multiple Completions: Attach wellbore diagram of proposed completion or recompletion.

JMR Services, LLC submits this sundry with proposed P&A procedure for the above well on behalf of State of New Mexico for Scorpion Oil & Gas, LLC.

Spud Date:

Rig Release Date:

I hereby certify that the information above is true and complete to the best of my knowledge and belief.

SIGNATURE *M. Lundy* TITLE Regulatory DATE 2/25/20

Type or print name _____ E-mail address: _____ PHONE: _____
For State Use Only

APPROVED BY: _____ TITLE _____ DATE _____
Conditions of Approval (if any) _____

Well Name: HH Harris #002
 API No: 30-025-20931 (Lea County)
 Legals: Sec 35-T12S-R38E (Unit O)
 Spud Date: August 17th, 1964
 Ownership: Fee / Fee

**Note: All Cement is Class C mixed at 14.8 ppg, yield 1.32 cu ft / sx.
 If WOC is required then we will use 2% in order to reduce wait time to 4hrs.
 Cement volumes are based on inside capacities + 50' excess and outside 100% excess in open hole.**

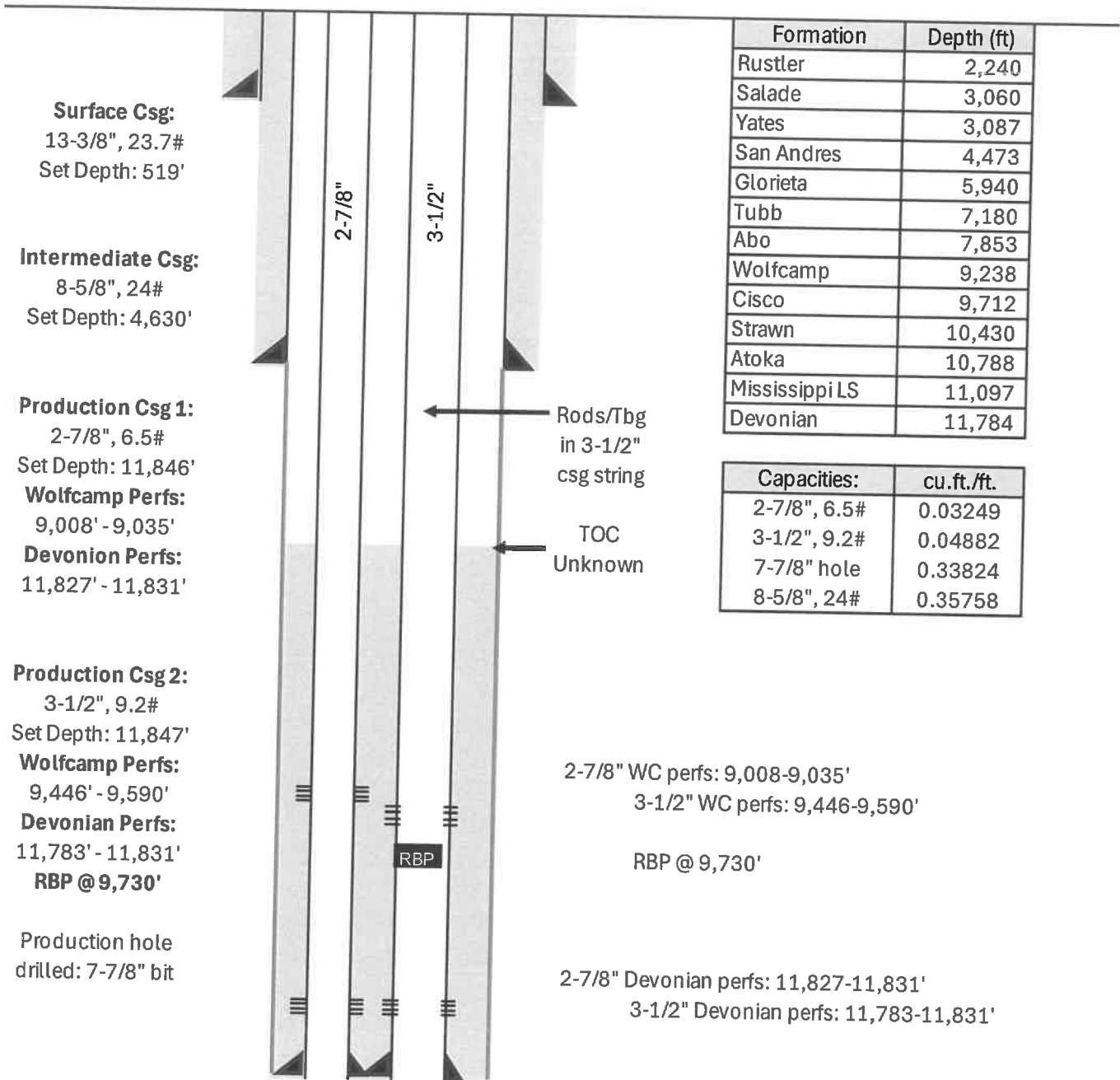
Prior to MOL 24hrs Notification is required to Regulatory Agency

- 1) MIRU rig and associated equipment.
- 2) Rig down horse head, unseat pump and TOOH laying down rod string from 3-1/2" casing string as follows (run during 2006 recomplete to Wolfcamp formation):
 - 1-1/4" x 26' Polished Rod with 16' liner
 - 116 x 7/8" rods
 - 268 x 3/4" rods
 - 1-1/4" x 20' pump with 1" x 8" strainer
- 3) N/D wellhead, N/U BOP, rig up floor and tubing handling tools.
- 4) TOOH laying down tubing string from 3-1/2" casing string as follows (also run during 2006 recomplete to Wolfcamp formation):
 - 323 joints of 2-3/8" L-80 CS Hydril
 - 1.78" Seating nipple
 - seal nipple
 - tubing seal divider skirt (looking up)
 - TAC set at 9,655' with 12K tension (below perms)
- 5) Tally and pick up 1-1/2" work string to RBP set at 9,730' in the 3-1/2" casing string. Latch onto RBP, release RBP and TOOH.
- 6) Rig up wireline, run in the 3-1/2" casing string with a Gauge Ring to 11,733' (Drift = 2.867"). POOH.
- 7) Run in the 3-1/2" casing string and pull a CBL from 11,733' to 4,600' (30' above the intermediate shoe). If TOC has not yet been identified at that depth, continue logging to surface. NOTE: Need to move this step (CBL) to after CIBP set at 9,393' in step 10.
- 8) Pick up 3-1/2" CIBP and RIH to 11,733', set CIBP (50' above Devonian perforations). POOH.
- 9) TIH with 1-1/2" work string to CIBP and spot four cement plugs, 500' each (21 sacks of Class G cement each) from CIBP at 11,733' to 9,733'. WOC and tag after each of these four plugs. TOOH. NOTE: Will also need to cover Cisco top at 9,712' with the Wolfcamp perms in mind (9,466' - 9,590'). Calculate / double check TOC with pipe in plug.
- 10) Pick up 3-1/2" CIBP and RIH to 9,396', set CIBP (50' above Wolfcamp perforations). POOH.
- 11) TIH with 1-1/2" work string to CIBP and spot four cement plugs, 425' each (18 sacks of Class G cement each) from CIBP at 9,396' to 7,700'. WOC and tag after each of these four plugs. TOOH.
- 12) Rig up wireline, run in the 2-7/8" casing string with a Gauge Ring to 11,800' (Drift = 2.347"). POOH.
- 13) Pick up 2-7/8" CIBP and RIH to 11,777', set CIBP (50' above Devonian perforations). POOH.
- 14) TIH with 1-1/2" work string to CIBP and spot five cement plugs, 500' each (14 sacks of Class G cement each) from CIBP at 11,777' to 9,277'. WOC and tag after each of these five plugs. TOOH.
- 15) Pick up 2-7/8" CIBP and RIH to 8,958', set CIBP (50' above Wolfcamp perforations). POOH.
- 16) TIH with 1-1/2" work string to CIBP and spot three cement plugs, 420' each (12 sacks of Class G cement each) from CIBP at 8,958' to 7,700'. WOC and tag after each of these three plugs. TOOH laying down 1-1/2" work string.
- 17) Rig up wireline, RIH with jet cutter and cut 2-7/8" casing string at 7,350'. POOH.
 ** Might consider running free point first??
- 18) Lay down 2-7/8" casing.
- 19) Rig up wireline, RIH with jet cutter and cut 3-1/2" casing string at 7,350'. POOH.
 ** Might consider running free point first??
- 20) Lay down 3-1/2" casing.
- 21) Tally and pick up 2-3/8" work string to 7,230'. Spot cement plug for Tubb formation with 59 sacks of class G (100' plug with 100% XS). WOC, tag plug.
- 22) Lay down tubing to 5,990' and spot cement plug for Glorieta formation with 59 sacks of class G (100' plug with 100% XS). WOC, tag plug.
- 23) Lay down to 4,680' and TOOH standing back.
- 24) Rig up wireline and RIH to 8-5/8" intermediate shoe (4,630)'. POOH logging CBL to surface.
- 25) TIH with 2-3/8" work string to 4,680' and spot plug for intermediate shoe and San Andres with 95 sacks of class G cement (includes 50' XS). WOC, tag plug.
- 26) Lay down tubing to 3,137' and spot cement plug for Yates / Salado formations with 55 sacks of class G (includes 50' XS). WOC, tag plug.
- 27) Lay down tubing to 2,290' and spot cement plug for Ruster formation with 47 sacks of class G (includes 50' XS). WOC, tag plug.
- 28) Lay down tubing to 569' and spot surface plug with 177 sacks of class G cement.
- 29) Top off as needed, cut off WH, set marker, rig down, etc.

This draft procedure does not contain string mill / scraper runs prior to setting plugs.

Procedure

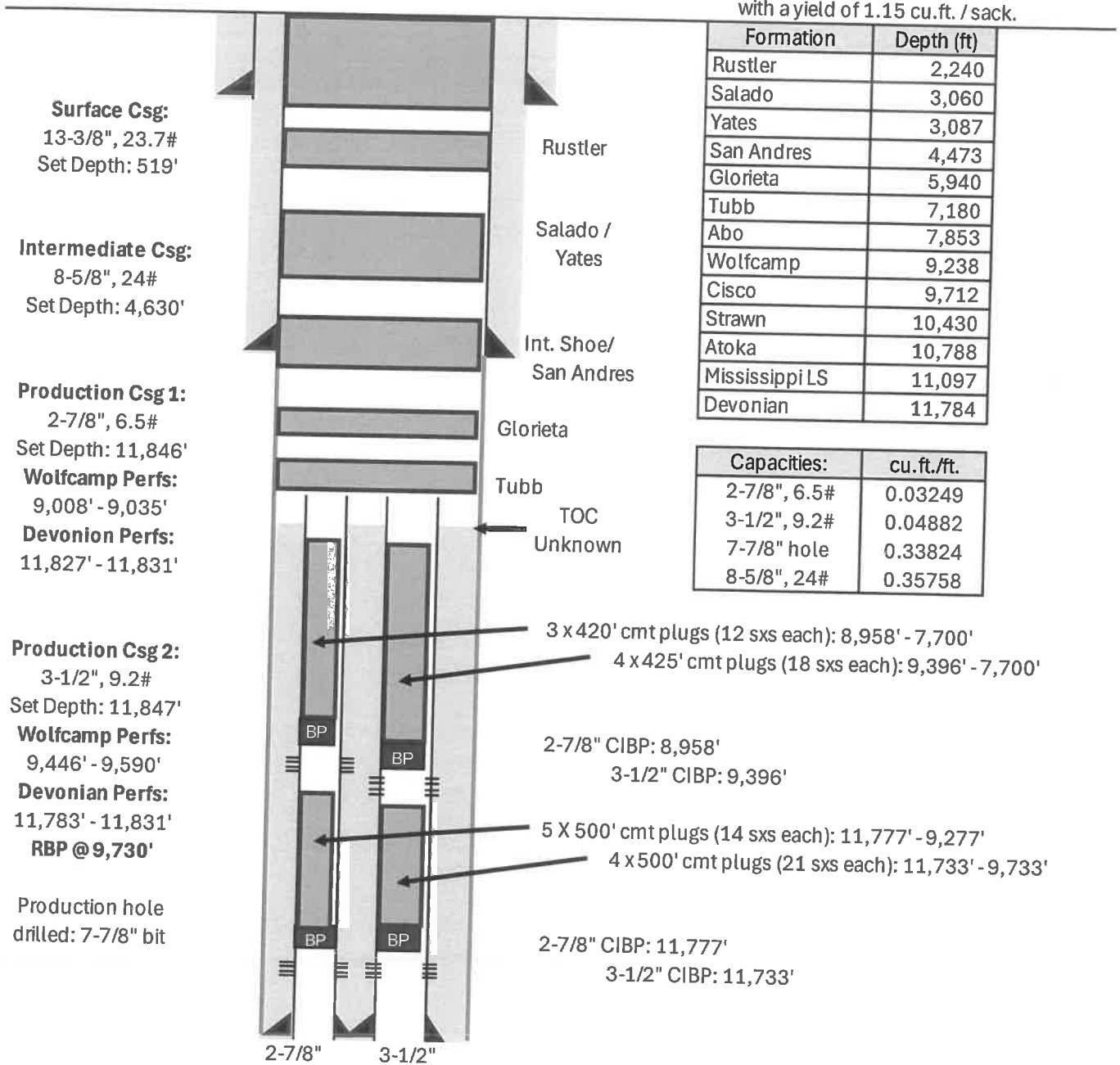
Well Name: HH Harris #002
API No: 30-025-20931 (Lea County)
Legals: Sec 35-T12S-R38E (Unit O)
Spud Date: August 17th, 1964
Ownership: Fee / Fee



Current WBS

Well Name: HH Harris #002
API No: 30-025-20931 (Lea County)
Legals: Sec 35-T12S-R38E (Unit O)
Spud Date: August 17th, 1964
Ownership: Fee / Fee

Note: TOC @ 7,500' in this example
Volumes: Based on G mixed at 15.8 ppg
 with a yield of 1.15 cu.ft. / sack.



Proposed WBS

Sante Fe Main Office
Phone: (505) 476-3441

General Information
Phone: (505) 629-6116

Online Phone Directory
<https://www.emnrd.nm.gov/ocd/contact-us>

State of New Mexico
Energy, Minerals and Natural Resources
Oil Conservation Division
1220 S. St Francis Dr.
Santa Fe, NM 87505

DEFINITIONS

Action 557722

DEFINITIONS

Operator: JMR SERVICES, LLC (OPG Vendor) 4706 Green Tree Blvd. Midland, TX 79707	OGRID: 333576
	Action Number: 557722
	Action Type: [UF-OMA] NOI Plug & Abandon Well (UF-OMA-C-103F)

DEFINITIONS

The OCD Mitigation Activity (OMA) forms are a subset of the OCD's forms exclusively designed for activities related to State of New Mexico's contracted evaluation, plugging, decommissioning, remediation, salvage and reclamation activities. Specifically, these forms are typically used where the OCD has acquired a hearing order allowing the OCD to perform mitigation activities on wells and associated facilities that no longer have an authorized or viable operator to perform the necessary work. These forms are not to be utilized for any other purpose.

Sante Fe Main Office
Phone: (505) 476-3441

General Information
Phone: (505) 629-6116

Online Phone Directory
<https://www.emnrd.nm.gov/ocd/contact-us>

State of New Mexico
Energy, Minerals and Natural Resources
Oil Conservation Division
1220 S. St Francis Dr.
Santa Fe, NM 87505

QUESTIONS

Action 557722

QUESTIONS

Operator: JMR SERVICES, LLC (OPG Vendor) 4706 Green Tree Blvd. Midland, TX 79707	OGRID: 333576
	Action Number: 557722
	Action Type: [UF-OMA] NOI Plug & Abandon Well (UF-OMA-C-103F)

QUESTIONS

Prerequisites	
[OGRID] Well Operator	[332127] Scorpion Oil & Gas, LLC
[API] Well Name and Number	[30-025-20931] H H HARRIS #002
Well Status	Active

Sante Fe Main Office
Phone: (505) 476-3441

General Information
Phone: (505) 629-6116

Online Phone Directory
<https://www.emnrd.nm.gov/ocd/contact-us>

State of New Mexico
Energy, Minerals and Natural Resources
Oil Conservation Division
1220 S. St Francis Dr.
Santa Fe, NM 87505

CONDITIONS

Action 557722

CONDITIONS

Operator: JMR SERVICES, LLC (OPG Vendor) 4706 Green Tree Blvd. Midland, TX 79707	OGRID: 333576
	Action Number: 557722
	Action Type: [UF-OMA] NOI Plug & Abandon Well (UF-OMA-C-103F)

CONDITIONS

Created By	Condition	Condition Date
loren.diede	Notify NMOCD 24 hours prior to beginning P&A operations. A great deal of WB conditions and configuration exist and the proposed P&A procedure will be modified as conditions warrant after P&A operations have begun. This well is NOT within the LPCH restricted area and an ABOVE GRADE P&A marker will be required. Submit photo and GPS coordinates of the P&A marker with the C-103P subsequent P&A report. The results of the CBL will determine whether plugs are to be inside or inside/outside squeezed plugs.	2/26/2026