

District I
1625 N. French Dr., Hobbs, NM 88240

State of New Mexico
Energy, Minerals & Natural
Resources

Form C-104
Revised August 1, 2011

District II
811 S. First St., Artesia, NM 88210

District III
1000 Rio Brazos Rd., Aztec, NM 87410

District IV
1220 S. St. Francis Dr., Santa Fe, NM 87505

Oil Conservation Division
1220 South St. Francis Dr.

Submit one copy to appropriate District Office

AMENDED REPORT

I. REQUEST FOR ALLOWABLE MINERAL AUTHORIZATION TO TRANSPORT

¹ Operator name and Address EOG RESOURCES INC PO BOX 2267 MIDLAND, TEXAS 79702		² OGRID Number 7377
		³ Reason for Filing Code/ Effective Date NW 8/31/2022
⁴ API Number 30 - 025-47446	⁵ Pool Name WC-025 G-08 S253235G; LOWER BONE SPRINGS	⁶ Pool Code 97903
⁷ Property Code 328894	⁸ Property Name MERCILESS 13 FED COM	⁹ Well Number 507H

II. ¹⁰ Surface Location

Ul or lot no.	Section	Township	Range	Lot Idn	Feet from the	North/South Line	Feet from the	East/West line	County
B	13	25S	32E		349'	NORTH	2251'	EAST	LEA

¹¹ Bottom Hole Location

UL or lot no.	Section	Township	Range	Lot Idn	Feet from the	North/South line	Feet from the	East/West line	County
G	24	25S	32E		2531'	NORTH	1851'	EAST	LEA

¹² Lse Code	¹³ Producing Method Code FLOWING	¹⁴ Gas Connection Date	¹⁵ C-129 Permit Number	¹⁶ C-129 Effective Date	¹⁷ C-129 Expiration Date
------------------------	--	-----------------------------------	-----------------------------------	------------------------------------	-------------------------------------

III. Oil and Gas Transporters

¹⁸ Transporter OGRID	¹⁹ Transporter Name and Address	²⁰ O/G/W
372812	EOGRM	OIL
151618	ENTERPRISE FIELD SERVICES	GAS
298751	REGENCY FIELD SERVICES	GAS
36785	DCP MIDSTREAM	GAS

IV. Well Completion Data

²¹ Spud Date 5/7/2022	²² Ready Date 8/30/2022	²³ TD 18,508'	²⁴ PBDT 18,484'	²⁵ Perforations 11,067'-18,484'	²⁶ DHC, MC
²⁷ Hole Size	²⁸ Casing & Tubing Size	²⁹ Depth Set	³⁰ Sacks Cement		
17 1/2"	13 3/8"	1,081'	1125 SXS CL C/CIRC		
12 1/4"	9 5/8"	4,843'	1695 SXS CL C/CIRC		
7 7/8"	5 1/2"	18,492'	1129 SXS CL C/ CIRC		

V. Well Test Data

³¹ Date New Oil 8/30/2022	³² Gas Delivery Date 8/30/2022	³³ Test Date 9/9/2022	³⁴ Test Length 24 HRS	³⁵ Tbg. Pressure	³⁶ Csg. Pressure 710
³⁷ Choke Size 90	³⁸ Oil 3748	³⁹ Water 7658	⁴⁰ Gas 5900	⁴¹ Test Method	

⁴² I hereby certify that the rules of the Oil Conservation Division have been complied with and that the information given above is true and complete to the best of my knowledge and belief.

Signature: *Kristina Agee*

Printed name: Kristina Agee

Title: REGULATORY SPECIALIST

E-mail Address: kristina_agee@eogresources.com

Date: 10/25/2022 Phone: 432-686-6996

OIL CONSERVATION DIVISION	
Approved by:	
Title:	
Approval Date:	

District I
1625 N. French Dr., Hobbs, NM 88240
Phone: (575) 393-6161 Fax: (575) 393-0720
District II
811 S. First St., Artesia, NM 88210
Phone: (575) 748-1283 Fax: (575) 748-9720
District III
1000 Rio Brazos Road, Aztec, NM 87410
Phone: (505) 334-6178 Fax: (505) 334-6170
District IV
1220 S. St. Francis Dr., Santa Fe, NM 87505
Phone: (505) 476-3460 Fax: (505) 476-3462

State of New Mexico
Energy, Minerals & Natural Resources
Department
OIL CONSERVATION DIVISION
1220 South St. Francis Dr.
Santa Fe, NM 87505

FORM C-102

Revised August 1, 2011

Submit one copy to appropriate

District Office

AMENDED REPORT

AS - DRILLED PLAT

¹ API Number 30-025-47446		² Pool Code 97903		³ Pool Name WC-025 G-08 S253235G; LOWER BONE SPRINGS	
⁴ Property Code 328894		⁵ Property Name MERCILESS 13 FED COM			⁶ Well Number 507H
⁷ OGRID No. 7377		⁸ Operator Name EOG RESOURCES, INC.			⁹ Elevation 3496'

¹⁰Surface Location

UL or lot no.	Section	Township	Range	Lot Idn	Feet from the	North/South line	Feet from the	East/West line	County
B	13	25-S	32-E	-	349'	NORTH	2251	EAST	LEA

¹¹Bottom Hole Location If Different From Surface

UL or lot no.	Section	Township	Range	Lot Idn	Feet from the	North/South line	Feet from the	East/West line	County
G	24	25-S	32-E	-	2531'	NORTH	1851'	EAST	LEA

¹² Dedicated Acres 480.00	¹³ Joint or Infill	¹⁴ Consolidation Code	¹⁵ Order No.
--	-------------------------------	----------------------------------	-------------------------

No allowable will be assigned to this completion until all interests have been consolidated or a non-standard unit has been approved by the division.

¹⁶

SURFACE LOCATION
NEW MEXICO EAST
NAD 1983
X=759918
Y=414244
LAT.: N 32.1368657
LONG.: W 103.6271633

KICK OFF POINT
NEW MEXICO EAST
NAD 1983
X=760350
Y=414531
LAT.: N 32.1376459
LONG.: W 103.6257620
MD =10412'

FIRST TAKE POINT
NEW MEXICO EAST
NAD 1983
X=760367
Y=414212
LAT.: N 32.1367688
LONG.: W 103.6257143
MD = 11067'

TERMINUS HOLE LOCATION
NEW MEXICO EAST
NAD 1983
X=760362
Y=406788
LAT.: N 32.1163630
LONG.: W 103.6258873
MD =18508'

LAST TAKE POINT
NEW MEXICO EAST
NAD 1983
X=760362
Y=406812
LAT.: N 32.1164290
LONG.: W 103.6258887
MD = 18484'

POINT	UTM ZONE 13 COORDINATES		
SHL	X= 2065232.312	Y= 11668059.556	
KOP	X=2065662.460	Y=11668349.179	
FTP	X=2065661.431	Y=11668030.340	
LTP	X=, 2065722.225	Y=11660631.612	
THL	X= 2065722.373	Y= 11660607.616	

¹⁷OPERATOR CERTIFICATION

I hereby certify that the information contained herein is true and complete to the best of my knowledge and belief, and that this organization either owns a working interest or unleased mineral interest in the land including the proposed bottom hole location or has a right to drill this well at this location pursuant to a contract with an owner of such a mineral or working interest, or to a voluntary pooling agreement or a compulsory pooling order heretofore entered by the division.

Kristina Agee 9/29/2022

Signature Date

Kristina Agee

Printed Name

kristina_agee@eogresources.com

E-mail Address

¹⁸SURVEYOR CERTIFICATION

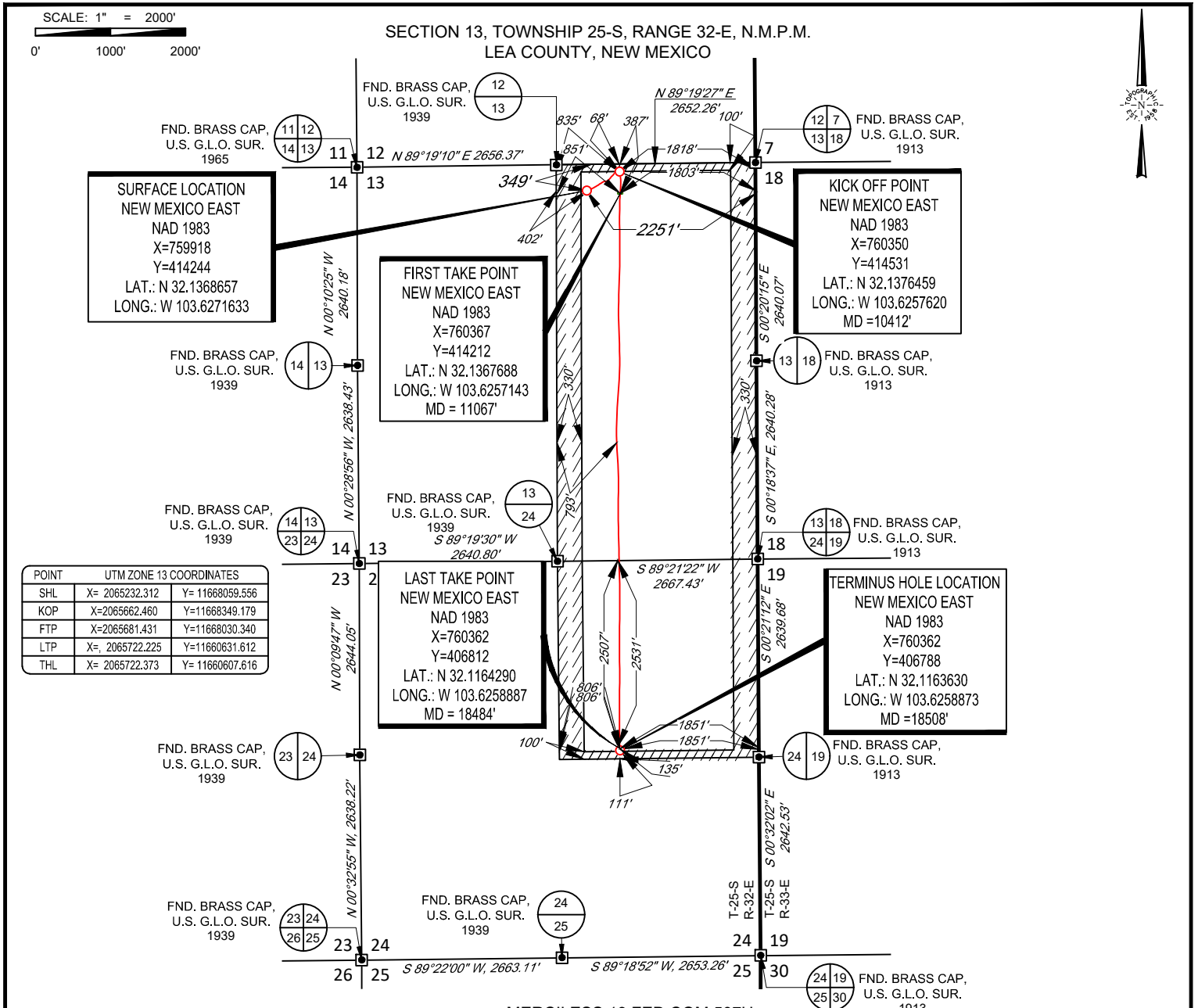
I hereby certify that the well location shown on this plat was plotted from field notes of actual surveys made by me or under my supervision, and that the same is true to the best of my belief.

03/30/2022

Date of Survey

Signature and Seal of Professional Surveyor

Certificate Number

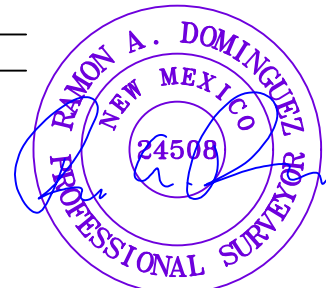


POINT	UTM ZONE 13 COORDINATES	
SHL	X= 2065232.312	Y= 11668059.556
KOP	X=2065662.460	Y=11668349.179
FTP	X=2065681.431	Y=11668030.340
LTP	X=, 2065722.225	Y=11660631.612
THL	X= 2065722.373	Y= 11660607.616

LEASE NAME & WELL NO.: MERCILESS 13 FED COM 507H
 SECTION 13 TWP 25-S RGE 32-E SURVEY N.M.P.M.
 COUNTY LEA STATE NM ELEVATION 3496'
 DESCRIPTION 349' FNL & 2251' FEL



1400 EVERMAN PARKWAY, Ste. 146 • FT. WORTH, TEXAS 76140
 TELEPHONE: (817) 744-7512 • FAX (817) 744-7554
 2903 NORTH BIG SPRING • MIDLAND, TEXAS 79705
 TELEPHONE: (432) 682-1653 OR (800) 767-1653 • FAX (432) 682-1743
 WWW.TOPOGRAPHIC.COM



Ramon A. Dominguez, P.S. No. 24508
 June 21, 2022



MERCILESS 13 FED COM 507H AS-DRILLED	REVISION:
DATE: 08/25/2022	
FILE:AD_MERCILESS_13_FED_COM_507H	
DRAWN BY: LS	
SHEET: 2 OF 2	

NOTES:
 1. ORIGINAL DOCUMENT SIZE: 8.5" X 11"
 2. ALL BEARINGS, DISTANCES, AND COORDINATE VALUES CONTAINED HEREIN ARE GRID BASED UPON THE NEW MEXICO COORDINATE SYSTEM OF 1983, EAST ZONE, U.S. SURVEY FEET.
 3. THIS WELL LOCATION SHOWN HEREON HAS BEEN SURVEYED ON THE GROUND UNDER MY SUPERVISION AND PREPARED ACCORDING TO THE EVIDENCE FOUND AT THE TIME OF SURVEY, AND DATA PROVIDED BY EOG RESOURCES, INC. THIS CERTIFICATION IS MADE AND LIMITED TO THOSE PERSONS OR ENTITIES SHOWN ON THE FACE OF THIS PLAT AND IS NON-TRANSFERABLE. THIS SURVEY IS CERTIFIED FOR THIS TRANSACTION ONLY.



Lea County, NM (NAD 83 NME)

Merciless 13 Fed Com #507H

Nabors M1206

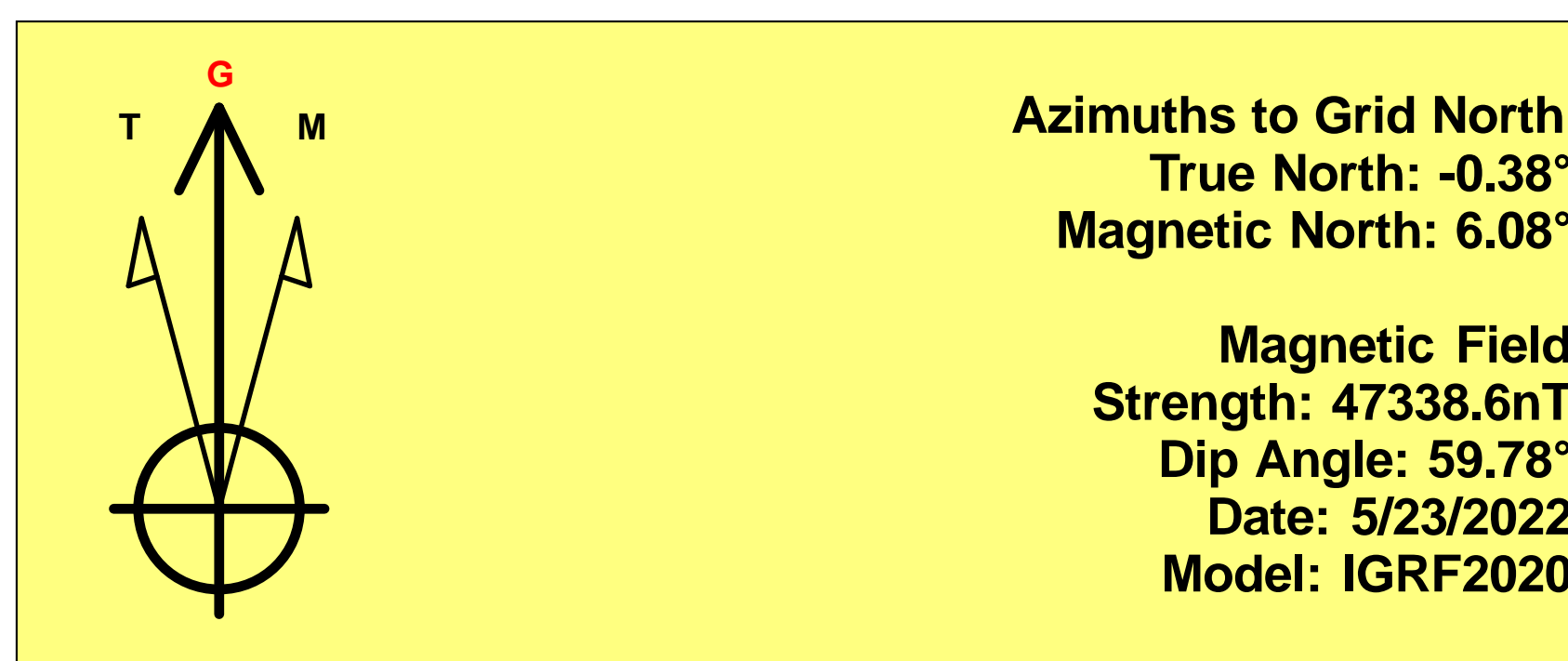
OH

PROJECT DETAILS: Lea County, NM (NAD 83 NME)

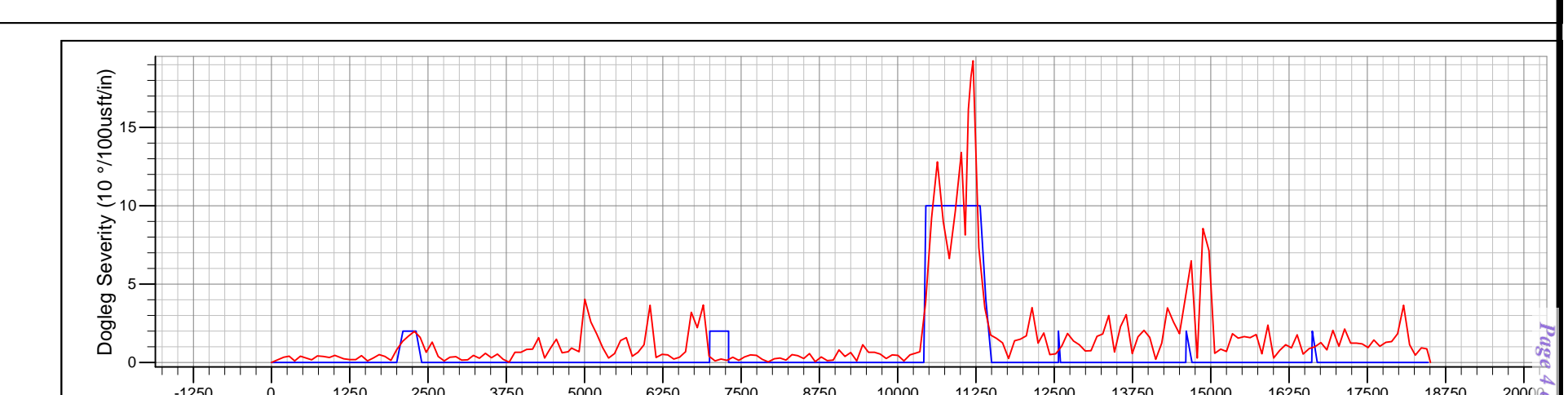
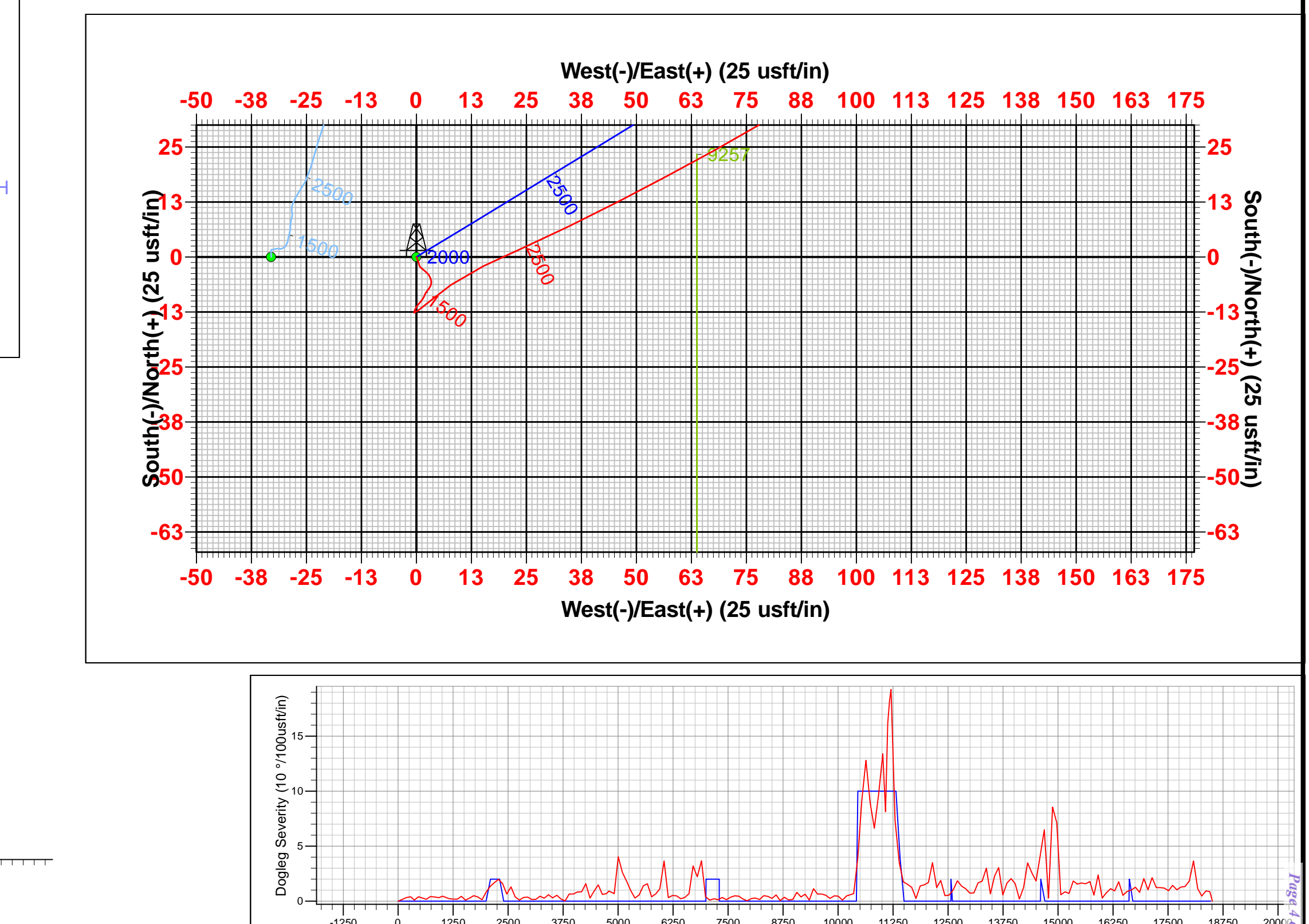
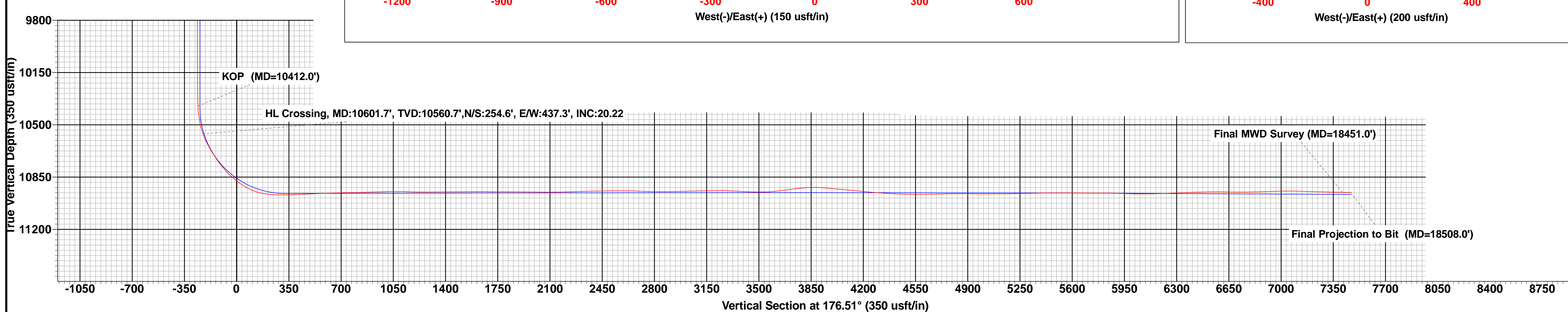
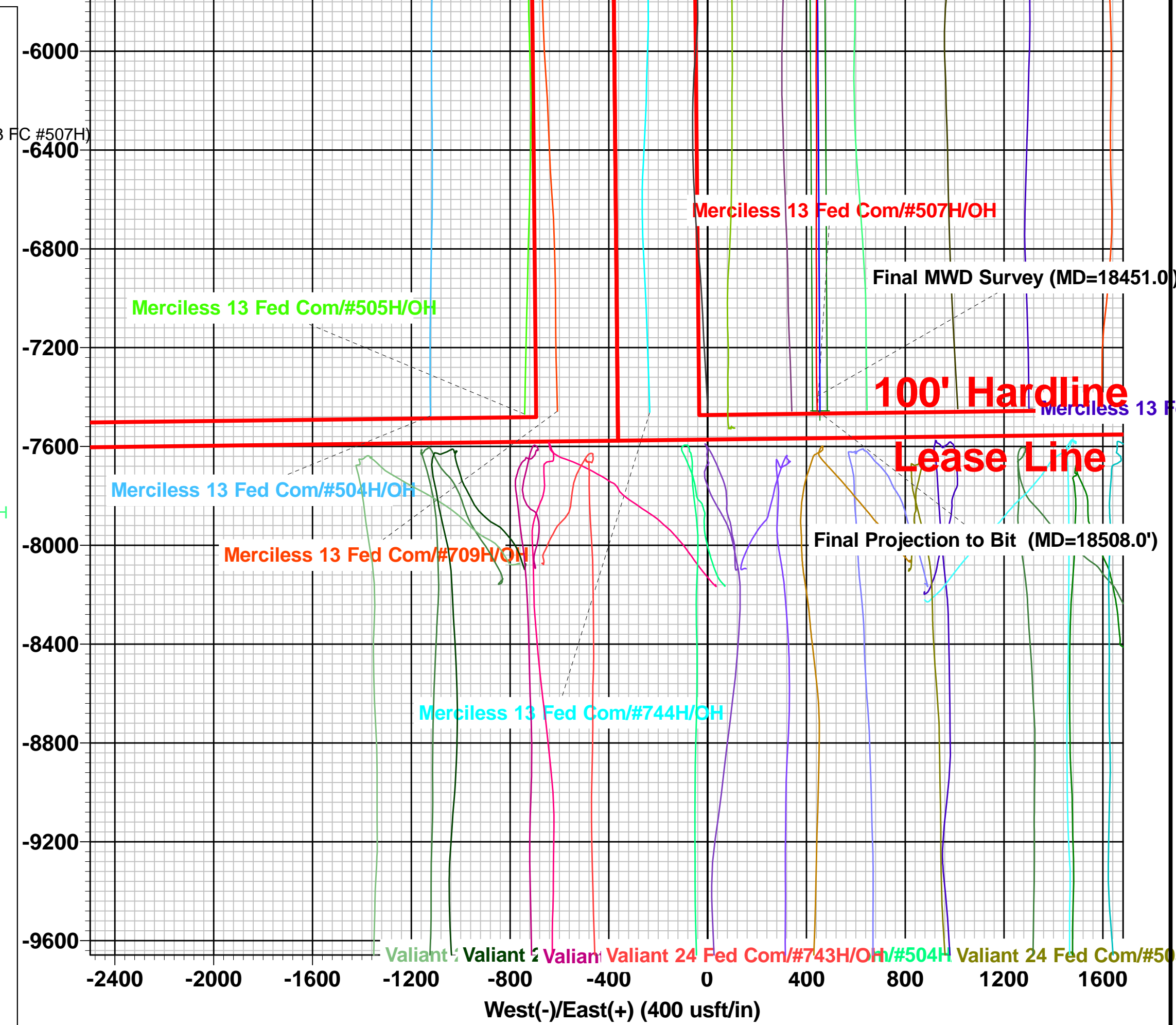
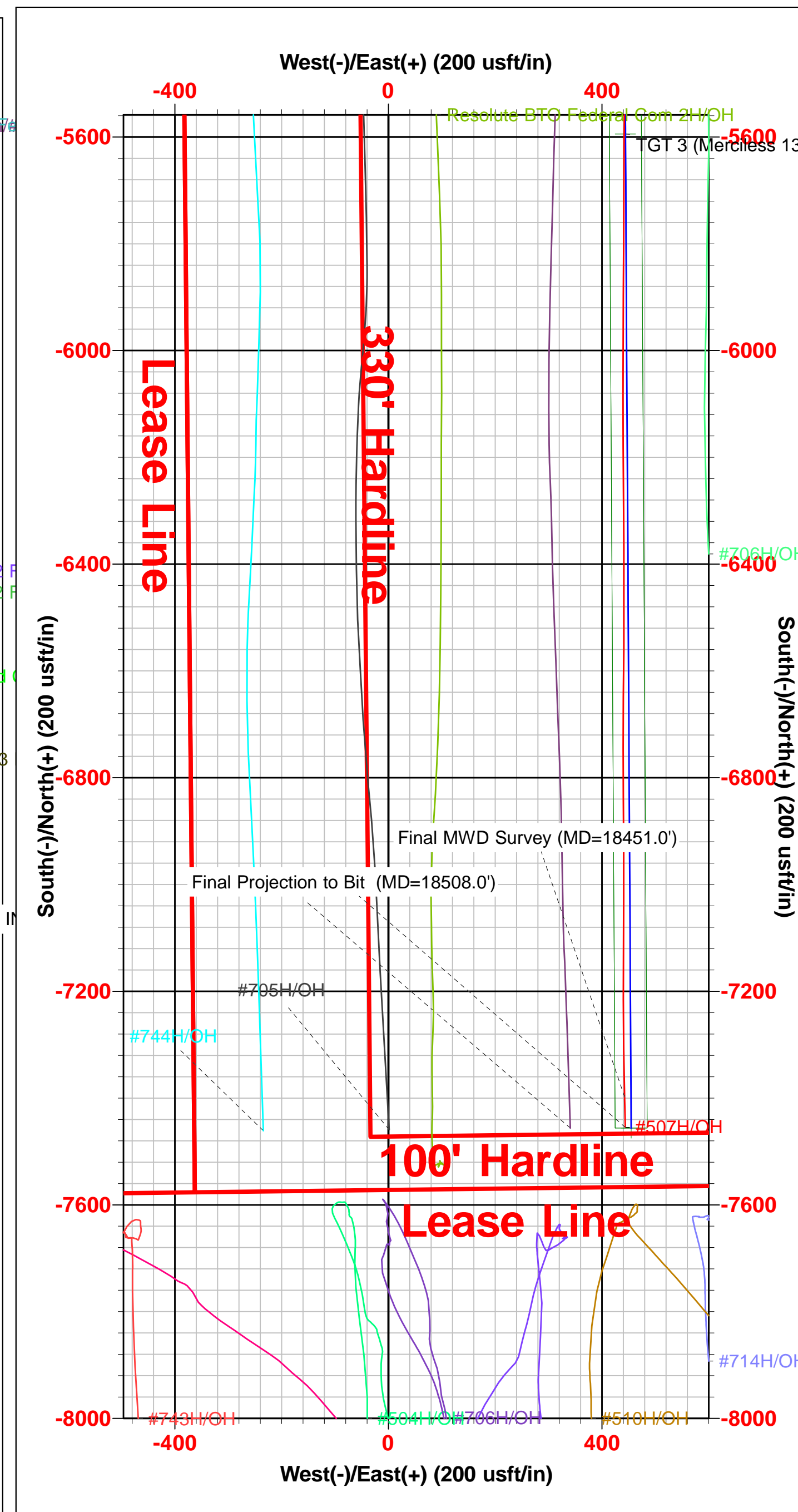
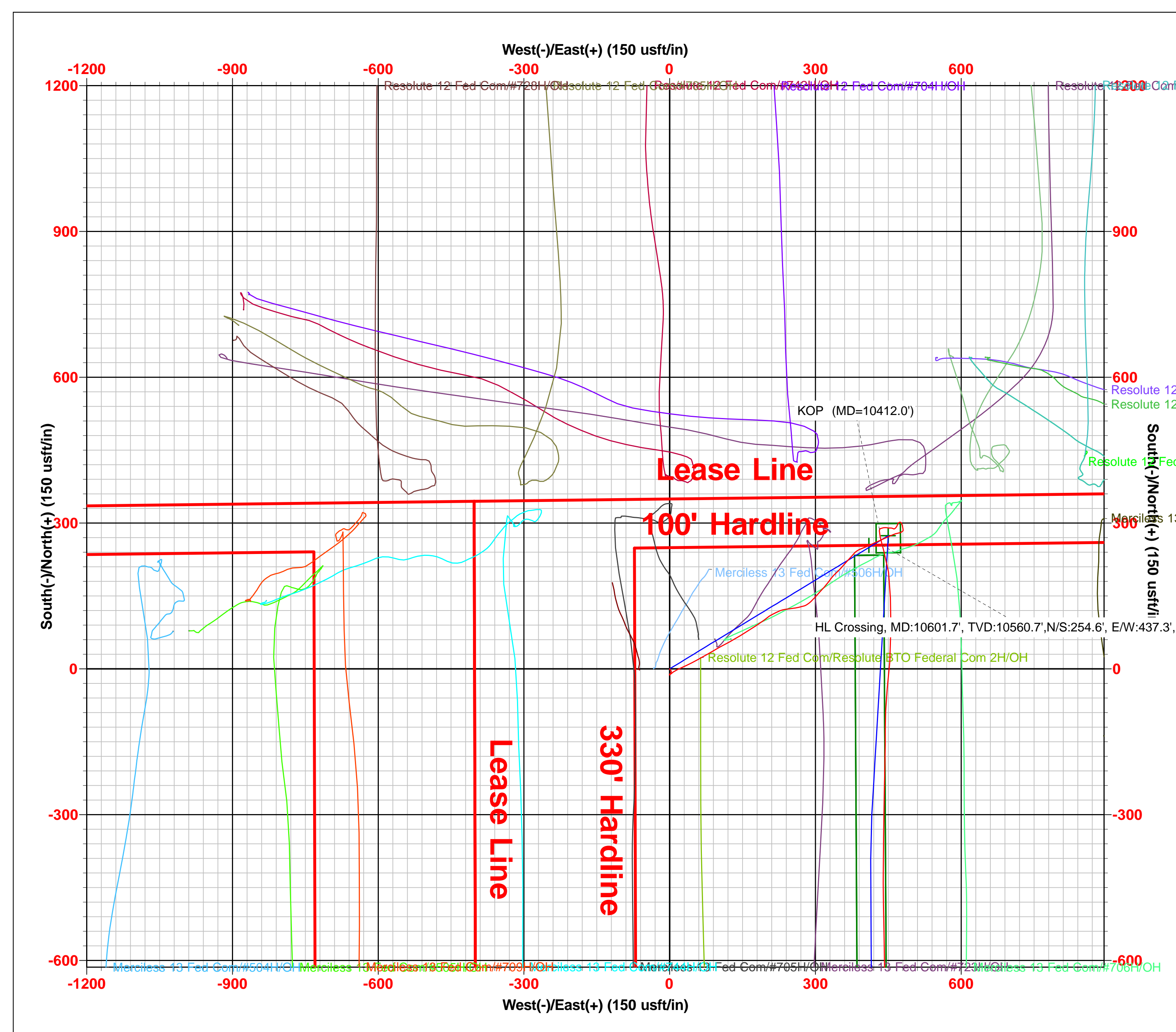
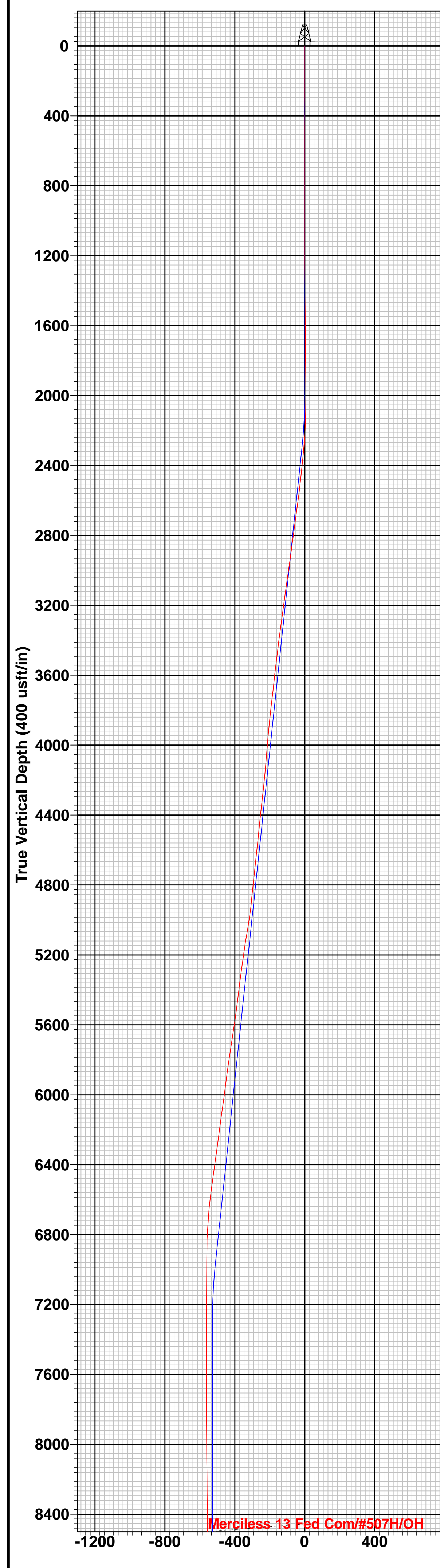
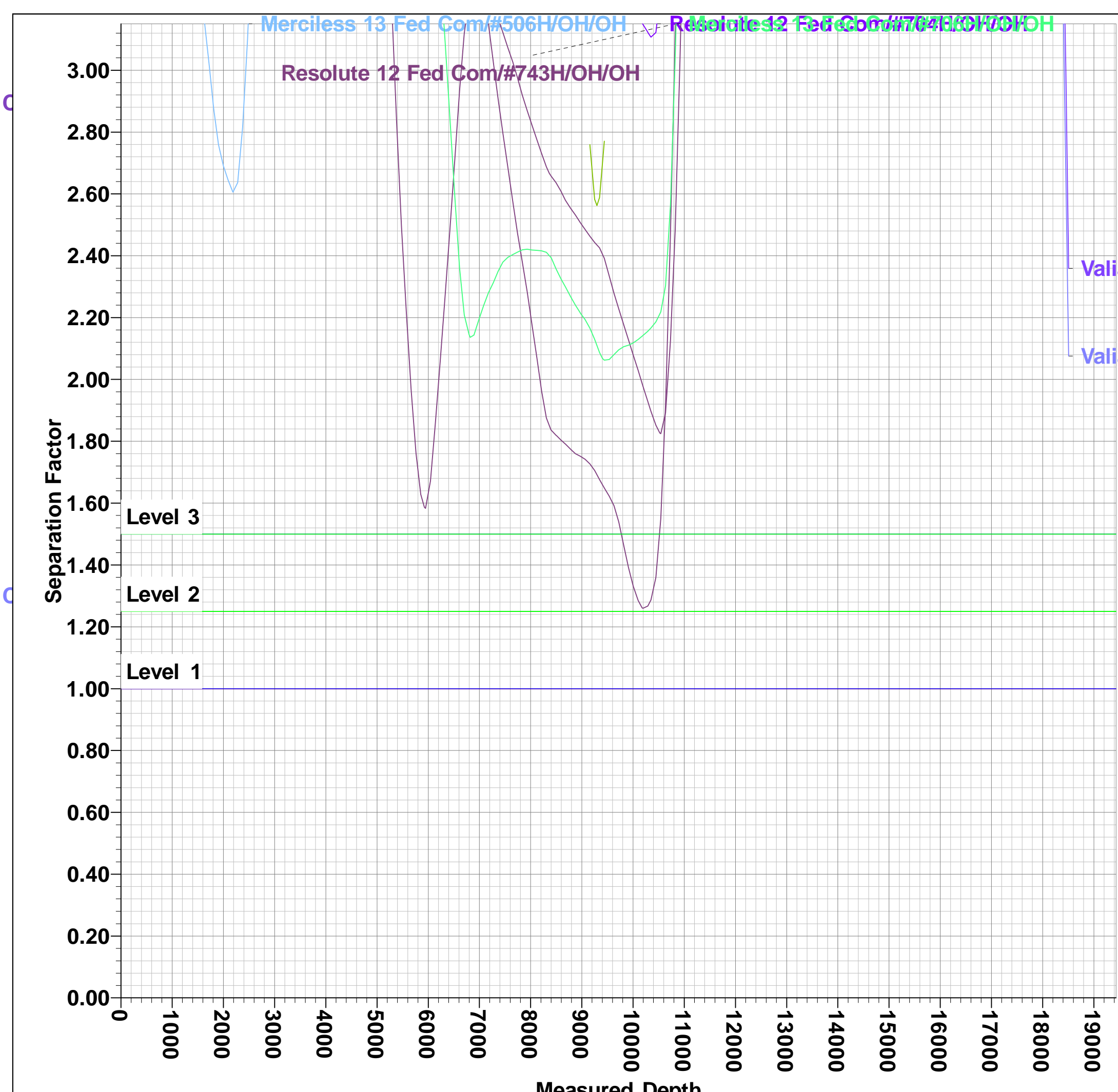
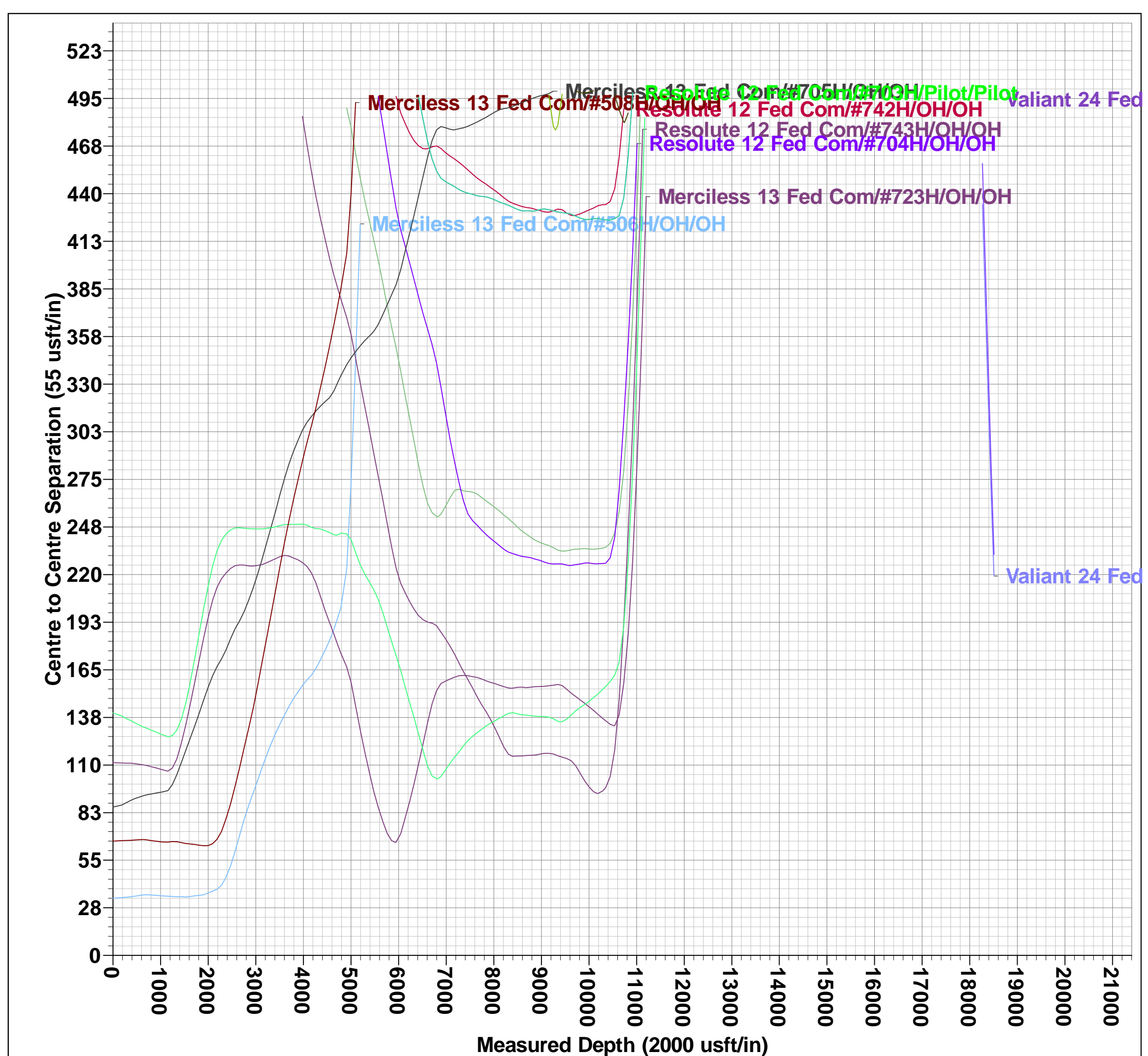
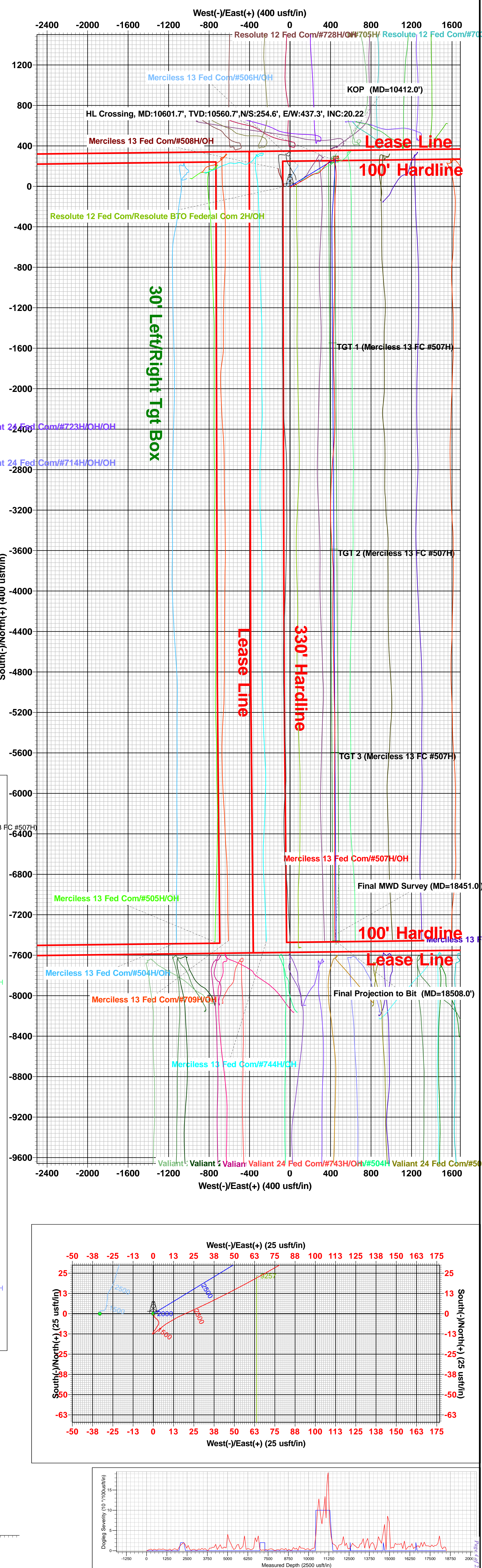
Geodetic Datum: US State Plane 1983
 Datum: North American Datum 1983
 Ellipsoid: GRS 1980
 Zone: New Mexico Eastern Zone
 System Datum: Mean Sea Level

WELL DETAILS: #507H

	KB = 32' @ 3528.0usft (Nabors M1206)	3496.0
Northing	Easting	Longitude
414244.00	759918.00	103° 37' 37.793 W
	Latitude	
	32° 8' 12.717 N	



To convert a Magnetic Direction to a Grid Direction, Add 6.08°
 To convert a Magnetic Direction to a True Direction, Add 6.45° East
 To convert a True Direction to a Grid Direction, Subtract 0.38°





Midland

Lea County, NM (NAD 83 NME)

Merciless 13 Fed Com

#507H

OH

Design: OH

Final PVA

16 June, 2022



Final PVA

Company:	Midland	Local Co-ordinate Reference:	Well #507H
Project:	Lea County, NM (NAD 83 NME)	TVD Reference:	KB = 32' @ 3528.0usft (Nabors M1206)
Site:	Merciless 13 Fed Com	MD Reference:	KB = 32' @ 3528.0usft (Nabors M1206)
Well:	#507H	North Reference:	Grid
Wellbore:	OH	Survey Calculation Method:	Minimum Curvature
Design:	OH	Database:	PEDM

Project	Lea County, NM (NAD 83 NME)		
Map System:	US State Plane 1983	System Datum:	Mean Sea Level
Geo Datum:	North American Datum 1983		
Map Zone:	New Mexico Eastern Zone		

Site	Merciless 13 Fed Com		
Site Position:		Northing:	414,304.00 usft
From:	Map	Easting:	757,406.00 usft
Position Uncertainty:	0.0 usft	Slot Radius:	13-3/16 "
		Latitude:	32° 8' 13.472 N
		Longitude:	103° 38' 7.002 W
		Grid Convergence:	0.37 °

Well	#507H					
Well Position	+N/-S	0.0 usft	Northing:	414,244.00 usft	Latitude:	32° 8' 12.717 N
	+E/-W	0.0 usft	Easting:	759,918.00 usft	Longitude:	103° 37' 37.793 W
Position Uncertainty		0.0 usft	Wellhead Elevation:	usft	Ground Level:	3,496.0 usft

Wellbore	OH				
Magnetics	Model Name	Sample Date	Declination (°)	Dip Angle (°)	Field Strength (nT)
	IGRF2020	5/23/2022	6.45	59.78	47,338.60981434

Design	OH				
Audit Notes:					
Version:	1.0	Phase:	ACTUAL	Tie On Depth:	0.0
Vertical Section:		Depth From (TVD) (usft)	+N/-S (usft)	+E/-W (usft)	Direction (°)
		0.0	0.0	0.0	176.51

Survey Program	Date	6/16/2022			
From (usft)	To (usft)	Survey (Wellbore)	Tool Name	Description	
191.0	18,508.0	DrilTech MWD #1 (OH)	EOG MWD+IFR1	MWD + IFR1	



Final PVA

Company:	Midland	Local Co-ordinate Reference:	Well #507H
Project:	Lea County, NM (NAD 83 NME)	TVD Reference:	KB = 32' @ 3528.0usft (Nabors M1206)
Site:	Merciless 13 Fed Com	MD Reference:	KB = 32' @ 3528.0usft (Nabors M1206)
Well:	#507H	North Reference:	Grid
Wellbore:	OH	Survey Calculation Method:	Minimum Curvature
Design:	OH	Database:	PEDM

Survey											
MD (usft)	Inc (°)	Azi (azimuth) (°)	TVD (usft)	N/S (usft)	E/W (usft)	DLeg (°/100usft)	Build (°/100usft)	Turn (°/100usft)	High to Plan (usft)	Right to Plan (usft)	
0.0	0.00	0.00	0.0	0.0	0.0	0.00	0.00	0.00	0.0	0.0	0.0
191.0	0.62	158.04	191.0	-1.0	0.4	0.32	0.32	0.00	-1.0	0.0	
281.0	0.26	165.07	281.0	-1.6	0.6	0.40	-0.40	7.81	-1.7	0.2	
370.0	0.35	169.90	370.0	-2.1	0.7	0.11	0.10	5.43	-2.2	0.3	
460.0	0.35	109.43	460.0	-2.4	1.0	0.39	0.00	-67.19	-1.8	-2.0	
640.0	0.53	142.57	640.0	-3.3	2.1	0.17	0.10	18.41	-3.8	-0.4	
730.0	0.18	115.76	730.0	-3.7	2.4	0.42	-0.39	-29.79	-3.8	-2.2	
827.0	0.53	139.14	827.0	-4.1	2.9	0.38	0.36	24.10	-5.0	-0.5	
921.0	0.44	173.33	921.0	-4.8	3.2	0.32	-0.10	36.37	-5.1	2.6	
1,010.0	0.09	118.66	1,010.0	-5.1	3.3	0.44	-0.39	-61.43	-5.4	-2.9	
1,152.0	0.35	179.74	1,152.0	-5.6	3.4	0.22	0.18	43.01	-5.6	3.4	
1,247.0	0.18	193.01	1,247.0	-6.1	3.4	0.19	-0.18	13.97	-5.1	4.6	
1,341.0	0.35	193.54	1,341.0	-6.5	3.3	0.18	0.18	0.56	-5.5	4.7	
1,435.0	0.70	217.63	1,435.0	-7.2	2.8	0.43	0.37	25.63	-4.0	6.7	
1,528.0	0.79	215.16	1,528.0	-8.2	2.1	0.10	0.10	-2.66	-5.5	6.5	
1,623.0	0.70	195.39	1,623.0	-9.3	1.6	0.28	-0.09	-20.81	-8.5	4.0	
1,717.0	0.62	237.31	1,716.9	-10.1	1.0	0.51	-0.09	44.60	-4.6	9.1	
1,811.0	0.70	207.43	1,810.9	-10.9	0.3	0.37	0.09	-31.79	-9.5	5.3	
1,905.0	0.79	214.37	1,904.9	-11.9	-0.3	0.14	0.10	7.38	-10.0	6.5	
1,999.0	0.26	139.49	1,998.9	-12.6	-0.5	0.81	-0.56	-79.66	-9.3	-8.6	
2,092.0	1.23	51.42	2,091.9	-12.2	0.4	1.34	1.04	-94.70	8.8	-9.6	
2,186.0	2.81	51.34	2,185.9	-10.1	3.0	1.68	1.68	-0.09	10.0	-9.0	
2,280.0	4.66	53.09	2,279.7	-6.4	7.8	1.97	1.97	1.86	11.1	-8.5	
2,375.0	5.72	65.31	2,374.3	-2.1	15.2	1.61	1.12	12.86	10.5	-11.0	
2,470.0	6.33	65.13	2,468.7	2.1	24.3	0.64	0.64	-0.19	10.5	-12.1	
2,564.0	7.56	64.61	2,562.1	6.9	34.5	1.31	1.31	-0.55	9.1	-13.1	
2,658.0	7.74	62.23	2,655.2	12.5	45.7	0.39	0.19	-2.53	7.0	-13.5	



Final PVA

Company:	Midland	Local Co-ordinate Reference:	Well #507H
Project:	Lea County, NM (NAD 83 NME)	TVD Reference:	KB = 32' @ 3528.0usft (Nabors M1206)
Site:	Merciless 13 Fed Com	MD Reference:	KB = 32' @ 3528.0usft (Nabors M1206)
Well:	#507H	North Reference:	Grid
Wellbore:	OH	Survey Calculation Method:	Minimum Curvature
Design:	OH	Database:	PEDM

Survey												
MD (usft)	Inc (°)	Azi (azimuth) (°)	TVD (usft)	N/S (usft)	E/W (usft)	DLeg (°/100usft)	Build (°/100usft)	Turn (°/100usft)	High to Plan (usft)	Right to Plan (usft)		
2,753.0	7.65	62.59	2,749.4	18.4	57.0	0.11	-0.09	0.38	4.2	-14.2		
2,847.0	7.56	60.30	2,842.5	24.4	67.9	0.34	-0.10	-2.44	2.2	-14.6		
2,942.0	7.91	60.39	2,936.7	30.7	79.0	0.37	0.37	0.09	-0.6	-14.9		
3,036.0	8.00	59.60	3,029.8	37.2	90.3	0.15	0.10	-0.84	-3.5	-15.1		
3,131.0	8.09	60.56	3,123.8	43.8	101.8	0.17	0.09	1.01	-7.1	-15.3		
3,225.0	7.74	62.32	3,216.9	50.0	113.2	0.45	-0.37	1.87	-10.6	-15.5		
3,319.0	7.74	60.48	3,310.1	56.1	124.3	0.26	0.00	-1.96	-12.9	-16.4		
3,414.0	7.21	59.51	3,404.3	62.3	135.0	0.57	-0.56	-1.02	-15.0	-16.8		
3,508.0	6.95	60.21	3,497.6	68.1	145.0	0.29	-0.28	0.74	-16.8	-16.8		
3,603.0	6.60	57.22	3,591.9	73.9	154.6	0.52	-0.37	-3.15	-17.1	-17.7		
3,697.0	6.42	57.31	3,685.3	79.7	163.6	0.19	-0.19	0.10	-17.9	-17.5		
3,791.0	6.42	57.14	3,778.7	85.3	172.4	0.02	0.00	-0.18	-18.5	-17.3		
3,886.0	5.80	56.43	3,873.2	90.9	180.9	0.66	-0.65	-0.75	-18.3	-17.2		
3,980.0	5.19	55.91	3,966.7	95.9	188.4	0.65	-0.65	-0.55	-17.3	-16.9		
4,075.0	4.48	51.95	4,061.4	100.6	194.8	0.83	-0.75	-4.17	-14.1	-17.2		
4,170.0	5.28	51.42	4,156.0	105.6	201.2	0.84	0.84	-0.56	-12.1	-16.1		
4,264.0	6.24	62.67	4,249.6	110.6	209.1	1.57	1.02	11.97	-14.4	-13.3		
4,358.0	6.51	62.50	4,343.0	115.4	218.4	0.29	0.29	-0.18	-14.9	-14.0		
4,452.0	5.98	68.47	4,436.4	119.7	227.6	0.89	-0.56	6.35	-16.7	-13.5		
4,546.0	6.33	81.13	4,529.9	122.3	237.3	1.49	0.37	13.47	-20.1	-12.2		
4,640.0	6.77	84.47	4,623.3	123.6	248.0	0.62	0.47	3.55	-22.5	-15.1		
4,734.0	6.86	79.11	4,716.6	125.2	259.0	0.68	0.10	-5.70	-22.9	-21.1		
4,789.0	6.42	77.00	4,771.2	126.5	265.2	0.91	-0.80	-3.84	-22.9	-23.9		
4,911.0	5.72	72.61	4,892.6	129.9	277.7	0.69	-0.57	-3.60	-21.4	-29.2		
5,005.0	8.44	50.72	4,985.9	135.7	287.5	4.03	2.89	-23.29	-10.5	-35.4		
5,099.0	10.38	41.76	5,078.6	146.3	298.4	2.58	2.06	-9.53	-10.8	-34.8		
5,193.0	8.71	43.07	5,171.3	157.9	308.9	1.79	-1.78	1.39	-17.6	-31.7		



Final PVA

Company:	Midland	Local Co-ordinate Reference:	Well #507H
Project:	Lea County, NM (NAD 83 NME)	TVD Reference:	KB = 32' @ 3528.0usft (Nabors M1206)
Site:	Merciless 13 Fed Com	MD Reference:	KB = 32' @ 3528.0usft (Nabors M1206)
Well:	#507H	North Reference:	Grid
Wellbore:	OH	Survey Calculation Method:	Minimum Curvature
Design:	OH	Database:	PEDM

Survey												
MD (usft)	Inc (°)	Azi (azimuth) (°)	TVD (usft)	N/S (usft)	E/W (usft)	DLeg (°/100usft)	Build (°/100usft)	Turn (°/100usft)	High to Plan (usft)	Right to Plan (usft)		
5,288.0	7.91	40.44	5,265.3	168.1	318.1	0.93	-0.84	-2.77	-20.4	-29.7		
5,382.0	7.83	38.59	5,358.4	178.0	326.3	0.28	-0.09	-1.97	-23.0	-27.1		
5,477.0	7.30	37.80	5,452.6	187.8	334.0	0.57	-0.56	-0.83	-25.8	-23.9		
5,571.0	7.91	46.68	5,545.8	197.0	342.4	1.41	0.65	9.45	-31.8	-16.7		
5,666.0	9.32	43.25	5,639.7	207.1	352.4	1.58	1.48	-3.61	-35.4	-16.3		
5,760.0	9.06	41.49	5,732.5	218.2	362.5	0.41	-0.28	-1.87	-40.4	-14.7		
5,855.0	8.44	41.23	5,826.4	229.0	372.1	0.65	-0.65	-0.27	-45.3	-11.9		
5,949.0	7.39	42.55	5,919.5	238.7	380.7	1.13	-1.12	1.40	-49.0	-8.0		
6,044.0	8.18	67.77	6,013.6	245.7	391.1	3.66	0.83	26.55	-50.2	14.6		
6,138.0	7.91	66.89	6,106.7	250.8	403.3	0.32	-0.29	-0.94	-53.7	12.3		
6,233.0	7.47	65.31	6,200.8	255.9	414.9	0.51	-0.46	-1.66	-56.8	9.4		
6,326.0	7.91	65.84	6,293.0	261.1	426.2	0.48	0.47	0.57	-59.5	8.8		
6,421.0	7.83	64.43	6,387.1	266.6	438.0	0.22	-0.08	-1.48	-62.7	6.2		
6,515.0	8.00	66.35	6,480.2	271.9	449.8	0.33	0.18	2.04	-65.6	7.2		
6,610.0	7.56	69.77	6,574.3	276.8	461.7	0.67	-0.46	3.60	-68.1	9.5		
6,705.0	4.75	80.93	6,668.8	279.5	471.4	3.20	-2.96	11.75	-65.8	19.8		
6,799.0	4.04	55.10	6,762.5	282.0	478.0	2.21	-0.76	-27.48	-64.8	-11.7		
6,893.0	1.76	357.26	6,856.4	285.4	480.7	3.66	-2.43	-61.53	-23.1	-55.1		
6,987.0	1.49	347.95	6,950.4	288.0	480.3	0.40	-0.29	-9.90	-13.2	-49.0		
7,082.0	1.41	345.49	7,045.3	290.4	479.8	0.11	-0.08	-2.59	-10.9	-41.2		
7,176.0	1.32	352.96	7,139.3	292.6	479.4	0.21	-0.10	7.95	-16.0	-34.0		
7,271.0	1.32	347.68	7,234.3	294.7	479.0	0.13	0.00	-5.56	-14.1	-32.9		
7,365.0	1.23	333.88	7,328.3	296.7	478.3	0.34	-0.10	-14.68	-7.9	-35.4		
7,459.0	1.23	339.16	7,422.2	298.5	477.5	0.12	0.00	5.62	-13.1	-34.4		
7,554.0	0.97	328.08	7,517.2	300.2	476.7	0.35	-0.27	-11.66	-8.1	-36.5		
7,649.0	0.53	320.88	7,612.2	301.2	476.0	0.47	-0.46	-7.58	-4.7	-37.3		
7,743.0	0.62	278.07	7,706.2	301.6	475.2	0.46	0.10	-45.54	21.1	-30.9		



Final PVA

Company:	Midland	Local Co-ordinate Reference:	Well #507H
Project:	Lea County, NM (NAD 83 NME)	TVD Reference:	KB = 32' @ 3528.0usft (Nabors M1206)
Site:	Merciless 13 Fed Com	MD Reference:	KB = 32' @ 3528.0usft (Nabors M1206)
Well:	#507H	North Reference:	Grid
Wellbore:	OH	Survey Calculation Method:	Minimum Curvature
Design:	OH	Database:	PEDM

Survey												
MD (usft)	Inc (°)	Azi (azimuth) (°)	TVD (usft)	N/S (usft)	E/W (usft)	DLeg (°/100usft)	Build (°/100usft)	Turn (°/100usft)	High to Plan (usft)	Right to Plan (usft)		
7,837.0	0.44	269.28	7,800.2	301.7	474.4	0.21	-0.19	-9.35	24.7	-27.3		
7,932.0	0.44	272.89	7,895.2	301.7	473.6	0.03	0.00	3.80	22.2	-28.8		
8,026.0	0.35	243.36	7,989.2	301.6	473.0	0.23	-0.10	-31.41	32.9	-14.3		
8,120.0	0.62	242.48	8,083.2	301.2	472.3	0.29	0.29	-0.94	32.4	-13.8		
8,214.0	0.53	254.17	8,177.2	300.8	471.5	0.16	-0.10	12.44	28.0	-20.0		
8,309.0	0.79	217.52	8,272.2	300.2	470.6	0.51	0.27	-38.58	33.3	0.4		
8,403.0	0.79	188.34	8,366.2	299.0	470.1	0.42	0.00	-31.04	27.7	16.3		
8,497.0	0.88	203.89	8,460.2	297.7	469.8	0.26	0.10	16.54	29.7	8.4		
8,591.0	1.41	206.00	8,554.1	296.0	469.0	0.57	0.56	2.24	28.1	7.4		
8,685.0	1.41	203.98	8,648.1	293.9	468.0	0.05	0.00	-2.15	25.5	8.3		
8,780.0	1.23	216.20	8,743.1	292.1	466.9	0.35	-0.19	12.86	24.6	3.0		
8,874.0	1.23	221.21	8,837.1	290.5	465.6	0.11	0.00	5.33	22.7	0.9		
8,968.0	1.32	226.57	8,931.1	289.0	464.2	0.16	0.10	5.70	20.6	-1.1		
9,062.0	1.06	261.11	9,025.0	288.1	462.5	0.80	-0.28	36.74	14.6	-12.0		
9,156.0	0.70	265.15	9,119.0	287.9	461.1	0.39	-0.38	4.30	12.3	-12.9		
9,250.0	0.53	321.32	9,213.0	288.2	460.3	0.64	-0.18	59.76	-4.7	-16.9		
9,345.0	0.44	325.71	9,308.0	288.9	459.8	0.10	-0.09	4.62	-6.8	-16.5		
9,439.0	1.32	280.01	9,402.0	289.3	458.5	1.13	0.94	-48.62	5.7	-16.6		
9,534.0	1.93	277.37	9,497.0	289.7	455.9	0.65	0.64	-2.78	3.8	-16.4		
9,628.0	1.58	260.58	9,590.9	289.7	453.0	0.66	-0.37	-17.86	5.5	-15.0		
9,722.0	1.58	278.78	9,684.9	289.7	450.5	0.53	0.00	19.36	-2.0	-15.6		
9,817.0	1.58	287.13	9,779.8	290.3	447.9	0.24	0.00	8.79	-6.8	-15.0		
9,911.0	1.49	270.34	9,873.8	290.7	445.4	0.49	-0.10	-17.86	-4.7	-16.7		
10,005.0	1.85	262.96	9,967.8	290.5	442.7	0.45	0.38	-7.85	-5.2	-17.3		
10,099.0	1.76	262.87	10,061.7	290.1	439.8	0.10	-0.10	-0.10	-8.1	-17.3		
10,194.0	1.76	247.84	10,156.7	289.4	437.0	0.48	0.00	-15.82	-6.2	-19.2		
10,289.0	1.41	264.71	10,251.6	288.8	434.5	0.61	-0.37	17.76	-14.1	-16.1		



Final PVA

Company:	Midland	Local Co-ordinate Reference:	Well #507H
Project:	Lea County, NM (NAD 83 NME)	TVD Reference:	KB = 32' @ 3528.0usft (Nabors M1206)
Site:	Merciless 13 Fed Com	MD Reference:	KB = 32' @ 3528.0usft (Nabors M1206)
Well:	#507H	North Reference:	Grid
Wellbore:	OH	Survey Calculation Method:	Minimum Curvature
Design:	OH	Database:	PEDM

Survey											
MD (usft)	Inc (°)	Azi (azimuth) (°)	TVD (usft)	N/S (usft)	E/W (usft)	DLeg (°/100usft)	Build (°/100usft)	Turn (°/100usft)	High to Plan (usft)	Right to Plan (usft)	
10,352.0	1.49	247.84	10,314.6	288.4	432.9	0.69	0.13	-26.78	-10.4	-19.8	
10,412.0	2.80	193.18	10,374.6	286.7	431.9	3.81	2.19	-91.11	8.2	-20.5	
KOP (MD=10412.0')											
10,446.0	3.96	183.15	10,408.5	284.7	431.6	3.81	3.41	-29.49	10.0	-18.9	
10,541.0	12.57	169.62	10,502.5	271.2	433.3	9.23	9.06	-14.24	11.5	-14.2	
10,601.7	20.22	164.78	10,560.7	254.6	437.3	12.80	12.61	-7.98	9.8	-9.0	
HL Crossing, MD:10601.7', TVD:10560.7',N/S:254.6', E/W:437.3', INC:20.22											
10,635.0	24.45	163.38	10,591.4	242.4	440.7	12.80	12.70	-4.20	7.4	-5.3	
10,730.0	32.27	170.58	10,675.0	198.5	450.5	8.97	8.23	7.58	1.1	5.3	
10,824.0	35.26	180.43	10,753.2	146.5	454.4	6.63	3.18	10.48	3.7	12.1	
10,919.0	44.32	177.97	10,826.1	85.8	455.4	9.68	9.54	-2.59	10.4	17.2	
11,013.0	55.75	184.91	10,886.4	14.0	453.2	13.40	12.16	7.38	17.3	18.3	
11,077.0	60.85	186.14	10,920.1	-40.2	448.0	8.13	7.97	1.92	20.4	16.0	
11,129.0	68.41	182.10	10,942.3	-87.0	444.7	16.14	14.54	-7.77	21.7	16.1	
11,171.0	75.80	179.99	10,955.2	-126.9	444.0	18.23	17.60	-5.02	20.8	17.9	
11,202.0	81.69	180.95	10,961.3	-157.3	443.7	19.24	19.00	3.10	18.7	19.3	
11,297.0	88.64	181.22	10,969.3	-251.9	441.9	7.32	7.32	0.28	11.5	22.9	
11,391.0	91.89	180.78	10,968.9	-345.9	440.3	3.49	3.46	-0.47	9.3	26.0	
11,485.0	93.21	179.81	10,964.7	-439.8	439.8	1.74	1.40	-1.03	5.3	25.7	
11,579.0	92.33	178.67	10,960.1	-533.7	441.0	1.53	-0.94	-1.21	1.0	26.4	
11,673.0	91.54	179.55	10,957.0	-627.6	442.5	1.26	-0.84	0.94	-2.0	27.3	
11,768.0	91.71	179.72	10,954.3	-722.6	443.1	0.25	0.18	0.18	-4.4	27.4	
11,863.0	90.84	180.69	10,952.1	-817.5	442.8	1.37	-0.92	1.02	-6.3	26.5	
11,957.0	91.98	179.90	10,949.8	-911.5	442.3	1.48	1.21	-0.84	-8.4	25.5	
12,052.0	91.19	181.31	10,947.2	-1,006.5	441.3	1.70	-0.83	1.48	-10.8	23.9	
12,146.0	88.02	182.18	10,947.9	-1,100.4	438.4	3.50	-3.37	0.93	-9.9	20.5	
12,240.0	89.08	181.74	10,950.2	-1,194.3	435.2	1.22	1.13	-0.47	-7.3	16.7	



Final PVA

Company:	Midland	Local Co-ordinate Reference:	Well #507H
Project:	Lea County, NM (NAD 83 NME)	TVD Reference:	KB = 32' @ 3528.0usft (Nabors M1206)
Site:	Merciless 13 Fed Com	MD Reference:	KB = 32' @ 3528.0usft (Nabors M1206)
Well:	#507H	North Reference:	Grid
Wellbore:	OH	Survey Calculation Method:	Minimum Curvature
Design:	OH	Database:	PEDM

Survey												
MD (usft)	Inc (°)	Azi (azimuth) (°)	TVD (usft)	N/S (usft)	E/W (usft)	DLeg (°/100usft)	Build (°/100usft)	Turn (°/100usft)	High to Plan (usft)	Right to Plan (usft)		
12,335.0	90.75	181.13	10,950.4	-1,289.3	432.8	1.87	1.76	-0.64	-7.0	13.8		
12,429.0	90.57	181.57	10,949.3	-1,383.2	430.6	0.51	-0.19	0.47	-7.9	11.0		
12,523.0	90.31	181.13	10,948.6	-1,477.2	428.4	0.54	-0.28	-0.47	-8.4	8.3		
12,618.0	90.57	180.16	10,947.8	-1,572.2	427.3	1.06	0.27	-1.02	-8.9	6.7		
12,711.0	88.99	179.46	10,948.2	-1,665.2	427.6	1.86	-1.70	-0.75	-8.4	6.4		
12,806.0	90.13	178.85	10,948.9	-1,760.2	429.0	1.36	1.20	-0.64	-7.5	7.3		
12,900.0	89.69	177.88	10,949.1	-1,854.2	431.7	1.13	-0.47	-1.03	-7.2	9.4		
12,995.0	89.16	178.32	10,950.0	-1,949.1	434.9	0.73	-0.56	0.46	-6.1	12.0		
13,089.0	89.78	177.97	10,950.9	-2,043.0	437.9	0.76	0.66	-0.37	-5.1	14.5		
13,183.0	90.75	179.20	10,950.5	-2,137.0	440.2	1.67	1.03	1.31	-5.4	16.3		
13,276.0	92.24	178.41	10,948.0	-2,230.0	442.2	1.81	1.60	-0.85	-7.7	17.7		
13,370.0	91.01	180.95	10,945.4	-2,323.9	442.7	3.00	-1.31	2.70	-10.2	17.6		
13,464.0	90.92	181.57	10,943.8	-2,417.9	440.6	0.67	-0.10	0.66	-11.7	15.0		
13,557.0	91.19	183.68	10,942.1	-2,510.7	436.4	2.29	0.29	2.27	-13.3	10.2		
13,652.0	88.46	184.65	10,942.4	-2,605.5	429.5	3.05	-2.87	1.02	-12.8	2.8		
13,745.0	87.93	184.65	10,945.3	-2,698.1	421.9	0.57	-0.57	0.00	-9.8	-5.3		
13,839.0	89.34	184.03	10,947.5	-2,791.8	414.8	1.64	1.50	-0.66	-7.4	-12.9		
13,933.0	91.10	183.24	10,947.2	-2,885.6	408.9	2.05	1.87	-0.84	-7.6	-19.5		
14,027.0	91.01	181.74	10,945.4	-2,979.5	404.8	1.60	-0.10	-1.60	-9.2	-24.1		
14,122.0	91.19	181.66	10,943.6	-3,074.5	402.0	0.21	0.19	-0.08	-10.9	-27.5		
14,216.0	91.36	180.51	10,941.5	-3,168.4	400.2	1.24	0.18	-1.22	-12.8	-29.8		
14,310.0	88.29	179.37	10,941.8	-3,262.4	400.3	3.48	-3.27	-1.21	-12.4	-30.2		
14,404.0	86.70	177.53	10,945.9	-3,356.3	402.8	2.59	-1.69	-1.96	-8.1	-28.3		
14,498.0	88.37	177.09	10,950.0	-3,450.1	407.2	1.84	1.78	-0.47	-4.0	-24.4		
14,592.0	92.15	176.56	10,949.5	-3,543.9	412.4	4.06	4.02	-0.56	-4.3	-19.7		
14,687.0	98.31	176.38	10,940.9	-3,638.3	418.2	6.49	6.48	-0.19	-12.9	-14.5		
14,781.0	98.31	176.12	10,927.3	-3,731.1	424.3	0.27	0.00	-0.28	-26.6	-9.0		



Final PVA

Company:	Midland	Local Co-ordinate Reference:	Well #507H
Project:	Lea County, NM (NAD 83 NME)	TVD Reference:	KB = 32' @ 3528.0usft (Nabors M1206)
Site:	Merciless 13 Fed Com	MD Reference:	KB = 32' @ 3528.0usft (Nabors M1206)
Well:	#507H	North Reference:	Grid
Wellbore:	OH	Survey Calculation Method:	Minimum Curvature
Design:	OH	Database:	PEDM

Survey												
MD (usft)	Inc (°)	Azi (azimuth) (°)	TVD (usft)	N/S (usft)	E/W (usft)	DLeg (°/100usft)	Build (°/100usft)	Turn (°/100usft)	High to Plan (usft)	Right to Plan (usft)		
14,875.0	91.45	180.34	10,919.3	-3,824.7	427.2	8.56	-7.30	4.49	-34.8	-6.6		
14,969.0	84.77	180.78	10,922.4	-3,918.6	426.3	7.12	-7.11	0.47	-31.8	-8.1		
15,063.0	85.30	180.87	10,930.5	-4,012.2	424.9	0.57	0.56	0.10	-23.8	-10.0		
15,157.0	84.50	180.87	10,938.9	-4,105.8	423.5	0.85	-0.85	0.00	-15.6	-11.9		
15,252.0	84.24	180.25	10,948.2	-4,200.3	422.6	0.70	-0.27	-0.65	-6.4	-13.4		
15,346.0	85.82	179.55	10,956.4	-4,294.0	422.8	1.84	1.68	-0.74	1.6	-13.8		
15,440.0	87.23	179.20	10,962.0	-4,387.8	423.8	1.55	1.50	-0.37	7.1	-13.3		
15,534.0	88.72	178.76	10,965.4	-4,481.7	425.4	1.65	1.59	-0.47	10.3	-12.2		
15,629.0	90.22	178.85	10,966.3	-4,576.7	427.4	1.58	1.58	0.09	11.0	-10.7		
15,724.0	91.80	178.23	10,964.6	-4,671.7	429.8	1.79	1.66	-0.65	9.2	-8.9		
15,817.0	91.36	178.49	10,962.0	-4,764.6	432.5	0.55	-0.47	0.28	6.5	-6.8		
15,911.0	89.34	179.46	10,961.4	-4,858.6	434.2	2.38	-2.15	1.03	5.8	-5.6		
16,005.0	89.34	179.20	10,962.5	-4,952.5	435.3	0.28	0.00	-0.28	6.7	-5.1		
16,099.0	90.04	179.02	10,963.0	-5,046.5	436.8	0.77	0.74	-0.19	7.1	-4.2		
16,193.0	90.84	178.32	10,962.3	-5,140.5	438.9	1.13	0.85	-0.74	6.2	-2.5		
16,287.0	91.71	178.32	10,960.2	-5,234.4	441.7	0.93	0.93	0.00	4.0	-0.3		
16,380.0	91.01	179.81	10,958.0	-5,327.4	443.2	1.77	-0.75	1.60	1.7	0.7		
16,475.0	90.75	180.25	10,956.5	-5,422.4	443.2	0.54	-0.27	0.46	0.1	0.1		
16,570.0	90.04	180.69	10,955.9	-5,517.4	442.4	0.88	-0.75	0.46	-0.7	-1.3		
16,664.0	89.16	180.34	10,956.5	-5,611.4	441.5	1.01	-0.94	-0.37	-0.3	-2.7		
16,759.0	90.31	179.99	10,957.0	-5,706.4	441.3	1.27	1.21	-0.37	-0.3	-3.5		
16,854.0	89.69	180.43	10,957.0	-5,801.4	440.9	0.80	-0.65	0.46	-0.9	-4.4		
16,948.0	87.76	180.51	10,959.1	-5,895.3	440.1	2.05	-2.05	0.09	0.7	-5.7		
17,043.0	88.64	180.08	10,962.1	-5,990.3	439.6	1.03	0.93	-0.45	3.2	-6.7		
17,138.0	90.66	180.16	10,962.6	-6,085.3	439.4	2.13	2.13	0.08	3.3	-7.5		
17,233.0	91.71	179.64	10,960.7	-6,180.3	439.6	1.23	1.11	-0.55	0.8	-7.9		
17,326.0	92.77	179.20	10,957.0	-6,273.2	440.6	1.23	1.14	-0.47	-3.3	-7.5		



Final PVA

Company:	Midland	Local Co-ordinate Reference:	Well #507H
Project:	Lea County, NM (NAD 83 NME)	TVD Reference:	KB = 32' @ 3528.0usft (Nabors M1206)
Site:	Merciless 13 Fed Com	MD Reference:	KB = 32' @ 3528.0usft (Nabors M1206)
Well:	#507H	North Reference:	Grid
Wellbore:	OH	Survey Calculation Method:	Minimum Curvature
Design:	OH	Database:	PEDM

Survey											
MD (usft)	Inc (°)	Azi (azimuth) (°)	TVD (usft)	N/S (usft)	E/W (usft)	DLeg (°/100usft)	Build (°/100usft)	Turn (°/100usft)	High to Plan (usft)	Right to Plan (usft)	
17,420.0	91.98	179.99	10,953.2	-6,367.1	441.2	1.19	-0.84	0.84	-7.7	-7.4	
17,514.0	91.10	179.81	10,950.6	-6,461.1	441.4	0.96	-0.94	-0.19	-10.8	-7.7	
17,607.0	90.04	180.60	10,949.7	-6,554.1	441.1	1.42	-1.14	0.85	-12.2	-8.6	
17,701.0	89.08	180.43	10,950.4	-6,648.0	440.2	1.04	-1.02	-0.18	-12.0	-10.0	
17,796.0	90.22	179.99	10,951.0	-6,743.0	439.9	1.29	1.20	-0.46	-11.9	-10.9	
17,890.0	91.36	179.46	10,949.7	-6,837.0	440.3	1.34	1.21	-0.56	-13.7	-11.0	
17,984.0	93.03	179.90	10,946.1	-6,931.0	440.8	1.84	1.78	0.47	-17.8	-11.0	
18,078.0	89.60	180.08	10,943.9	-7,024.9	440.9	3.65	-3.65	0.19	-20.5	-11.5	
18,173.0	88.55	180.34	10,945.5	-7,119.9	440.5	1.14	-1.11	0.27	-19.5	-12.4	
18,267.0	88.29	179.99	10,948.1	-7,213.9	440.2	0.46	-0.28	-0.37	-17.4	-13.3	
18,361.0	88.81	179.28	10,950.5	-7,307.8	440.8	0.94	0.55	-0.76	-15.5	-13.2	
18,451.0	89.16	178.58	10,952.0	-7,397.8	442.5	0.87	0.39	-0.78	-14.4	-12.1	
Final MWD Survey (MD=18451.0')											
18,508.0	89.16	178.58	10,952.9	-7,454.8	443.9	0.00	0.00	0.00	-13.9	-11.0	
Final Projection to Bit (MD=18508.0')											

Design Annotations					
Measured Depth (usft)	Vertical Depth (usft)	Local Coordinates		Comment	
		+N/-S (usft)	+E/-W (usft)		
10,412.0	10,374.6	286.7	431.9	KOP (MD=10412.0')	
10,601.7	10,560.7	254.6	437.3	HL Crossing, MD:10601.7', TVD:10560.7',N/S:254.6', E/W:437.3', INC:20.22	
18,451.0	10,952.0	-7,397.8	442.5	Final MWD Survey (MD=18451.0')	
18,508.0	10,952.9	-7,454.8	443.9	Final Projection to Bit (MD=18508.0')	

Checked By: _____ Approved By: _____ Date: _____

Intent As Drilled

API #			
Operator Name:		Property Name:	Well Number

Kick Off Point (KOP)

UL	Section	Township	Range	Lot	Feet	From N/S	Feet	From E/W	County
Latitude					Longitude				NAD

First Take Point (FTP)

UL	Section	Township	Range	Lot	Feet	From N/S	Feet	From E/W	County
Latitude					Longitude				NAD

Last Take Point (LTP)

UL	Section	Township	Range	Lot	Feet	From N/S	Feet	From E/W	County
Latitude					Longitude				NAD

Is this well the defining well for the Horizontal Spacing Unit?

Is this well an infill well?

If infill is yes please provide API if available, Operator Name and well number for Defining well for Horizontal Spacing Unit.

API #			
Operator Name:		Property Name:	Well Number

KZ 06/29/2018

Submit To Appropriate District Office Two Copies District I 1625 N. French Dr., Hobbs, NM 88240 District II 811 S. First St., Artesia, NM 88210 District III 1000 Rio Brazos Rd., Aztec, NM 87410 District IV 1220 S. St. Francis Dr., Santa Fe, NM 87505		State of New Mexico Energy, Minerals and Natural Resources Oil Conservation Division 1220 South St. Francis Dr. Santa Fe, NM 87505				Form C-105 Revised August 1, 2011				
		1. WELL API NO.		30-025-47446		2. Type of Lease		<input type="checkbox"/> STATE <input type="checkbox"/> FEE <input checked="" type="checkbox"/> FED/INDIAN		
		3. State Oil & Gas Lease No.		NMNM110835		4. Reason for filing:				
		<input checked="" type="checkbox"/> COMPLETION REPORT (Fill in boxes #1 through #31 for State and Fee wells only)		5. Lease Name or Unit Agreement Name		MERCILESS 13 FED COM		6. Well Number:		
		<input type="checkbox"/> C-144 CLOSURE ATTACHMENT (Fill in boxes #1 through #9, #15 Date Rig Released and #32 and/or #33; attach this and the plat to the C-144 closure report in accordance with 19.15.17.13.K NMAC)				507H		7. Type of Completion:		
		<input checked="" type="checkbox"/> NEW WELL <input type="checkbox"/> WORKOVER <input type="checkbox"/> DEEPENING <input type="checkbox"/> PLUGBACK <input type="checkbox"/> DIFFERENT RESERVOIR <input type="checkbox"/> OTHER		8. Name of Operator		EOG RESOURCES INC		9. OGRID		
		8. Name of Operator		EOG RESOURCES INC		9. OGRID		7377		
		10. Address of Operator		PO BOX 2267 MIDLAND, TEXAS 79702		11. Pool name or Wildcat		WC-025 G-08 S253235G; LOWER BONE SPRINGS		
12. Location	Unit Ltr	Section	Township	Range	Lot	Feet from the	N/S Line	Feet from the	E/W Line	County
Surface:	B	13	25S	32E		349'	NORTH	2251'	EAST	LEA
BH:	G	24	25S	32E		2531'	NORTH	1851'	EAST	LEA
13. Date Spudded	14. Date T.D. Reached	15. Date Rig Released		16. Date Completed (Ready to Produce)		17. Elevations (DF and RKB, RT, GR, etc.)		3496'GL		
5/7/2022	6/15/2022	6/18/2022		8/31/2022						
18. Total Measured Depth of Well		19. Plug Back Measured Depth		20. Was Directional Survey Made?		21. Type Electric and Other Logs Run		None		
MD 18,508' TVD 10,952'		MD 18,484' TVD 10,952'		YES						
22. Producing Interval(s), of this completion - Top, Bottom, Name										
LOWER BONESPRING - 11,067'-18,484'										
23. CASING RECORD (Report all strings set in well)										
CASING SIZE		WEIGHT LB./FT.		DEPTH SET		HOLE SIZE		CEMENTING RECORD		AMOUNT PULLED
13 3/8"		54.4# J-55		1,081'		17 1/2"		1125 CL C/CIRC		
9 5/8"		40# J-55		4,843'		12 1/4"		1695 CL C/CIRC		
5 1/2"		20# HCP 110		18,492'		8 3/4"		1129 CL C CIRC		
24. LINER RECORD										
SIZE	TOP	BOTTOM	SACKS CEMENT	SCREEN	25. TUBING RECORD					
					SIZE	DEPTH SET	PACKER SET			
26. Perforation record (interval, size, and number)					27. ACID, SHOT, FRACTURE, CEMENT, SQUEEZE, ETC.					
11,067'-18,484' 3 1/8", 1554 holes					DEPTH INTERVAL		AMOUNT AND KIND MATERIAL USED			
					11,067'-18,484'		FRAC W/17,051,526 lbs proppant, 255,758 bbls load fld			
28. PRODUCTION										
Date First Production		Production Method (<i>Flowing, gas lift, pumping - Size and type pump</i>)				Well Status (<i>Prod. or Shut-in</i>)				
8/31/2022		Flowing				Producing				
Date of Test	Hours Tested	Choke Size	Prod'n For Test Period	Oil - Bbl	Gas - MCF	Water - Bbl.	Gas - Oil Ratio			
9/9/2022	24	90		3748	5900	7658	1574			
Flow Tubing Press.	Casing Pressure	Calculated 24-Hour Rate	Oil - Bbl.	Gas - MCF	Water - Bbl.	Oil Gravity - API - (<i>Corr.</i>)				
	710					45.7				
29. Disposition of Gas (<i>Sold, used for fuel, vented, etc.</i>)							30. Test Witnessed By			
SOLD										
31. List Attachments										
C-102, C-104, C-103, Directional Survey, H spacing,										
32. If a temporary pit was used at the well, attach a plat with the location of the temporary pit.										
33. If an on-site burial was used at the well, report the exact location of the on-site burial:										
Latitude			Longitude			NAD 1927 1983				
I hereby certify that the information shown on both sides of this form is true and complete to the best of my knowledge and belief										
Signature		Name		Title		Date				
		Kristina Agee		Senior Regulatory Administrator		10/25/2022				
E-mail Address kristina_agee@eogresources.com										

INSTRUCTIONS

This form is to be filed with the appropriate District Office of the Division not later than 20 days after the completion of any newly-drilled or deepened well and not later than 60 days after completion of closure. When submitted as a completion report, this shall be accompanied by one copy of all electrical and radio-activity logs run on the well and a summary of all special tests conducted, including drill stem tests. All depths reported shall be measured depths. In the case of directionally drilled wells, true vertical depths shall also be reported. For multiple completions, items 11, 12 and 26-31 shall be reported for each zone.

INDICATE FORMATION TOPS IN CONFORMANCE WITH GEOGRAPHICAL SECTION OF STATE

Southeastern New Mexico		Northwestern New Mexico	
T. Anhy <u>Rustler 951'</u>	T. Canyon <u>Brushy 7,269'</u>	T. Ojo Alamo	T. Penn A"
T. Salt <u>1,247'</u>	T. Strawn	T. Kirtland	T. Penn. "B"
B. Salt <u>4,686'</u>	T. Atoka	T. Fruitland	T. Penn. "C"
T. Yates	T. Miss	T. Pictured Cliffs	T. Penn. "D"
T. 7 Rivers	T. Devonian	T. Cliff House	T. Leadville
T. Queen	T. Silurian	T. Menefee	T. Madison
T. Grayburg	T. Montoya	T. Point Lookout	T. Elbert
T. San Andres	T. Simpson	T. Mancos	T. McCracken
T. Glorieta	T. McKee	T. Gallup	T. Ignacio Otzte
T. Paddock	T. Ellenburger	Base Greenhorn	T. Granite
T. Blinebry	T. Gr. Wash	T. Dakota	
T. Tubb	T. Delaware Sand	T. Morrison	
T. Drinkard	T. Bone Springs	T. Todilto	
T. Abo	T. <u>1st BS Sand 10,012'</u>	T. Entrada	
T. Wolfcamp	T. <u>2nd BS Sand 10,527'</u>	T. Wingate	
T. Penn	T.	T. Chinle	
T. Cisco (Bough C)	T.	T. Permian	

OIL OR GAS SANDS OR ZONES

No. 1, from.....to.....
 No. 2, from.....to.....
 No. 3, from.....to.....
 No. 4, from.....to.....

IMPORTANT WATER SANDS

Include data on rate of water inflow and elevation to which water rose in hole.

No. 1, from.....to.....feet.....
 No. 2, from.....to.....feet.....
 No. 3, from.....to.....feet.....

LITHOLOGY RECORD (Attach additional sheet if necessary)

From	To	Thickness In Feet	Lithology	From	To	Thickness In Feet	Lithology

U.S. Department of the Interior
BUREAU OF LAND MANAGEMENT

Well Name: MERCILESS 13 FED COM	Well Location: T25S / R32E / SEC 13 / NWNE / 32.1368658 / -103.6271629	County or Parish/State: LEA / NM
Well Number: 507H	Type of Well: OIL WELL	Allottee or Tribe Name:
Lease Number: NMNM110835	Unit or CA Name:	Unit or CA Number: NMNM135706
US Well Number: 3002547446	Well Status: Drilling Well	Operator: EOG RESOURCES INCORPORATED

Subsequent Report

Sundry ID: 2675012

Type of Submission: Subsequent Report

Type of Action: Drilling Operations

Date Sundry Submitted: 06/06/2022

Time Sundry Submitted: 08:39

Date Operation Actually Began: 05/07/2022

Actual Procedure: 5-7-2022 20" Conductor @ 120' 5-28-2022 17 1/2" hole 5-28-2022 Surface Hole @ 1,096' MD, 1,096' TVD Casing shoe @ 1,081' MD, 1,081' TVD Ran 13-3/8" 54.5# J-55 BTC Cement w/ 885 sx Class C (1.65 yld, 13.8 ppg), followed by 240 sx Class C (1.36 yld, 14.8 ppg) Test casing to 1,500 psi for 30 min, Circ (160 bbls) 544 sx cement to surface BOP/DIVERTERS/ROTATING HEAD-BREAK TEST BOP WITH CAMERON TEST UNIT, 250 PSI LOW, 10K HIGH, 10 MIN EACH TEST, TEST GOOD

Well Name: MERCILESS 13 FED COM	Well Location: T25S / R32E / SEC 13 / NWNE / 32.1368658 / -103.6271629	County or Parish/State: LEA / NM
Well Number: 507H	Type of Well: OIL WELL	Allottee or Tribe Name:
Lease Number: NMNM110835	Unit or CA Name:	Unit or CA Number: NMNM135706
US Well Number: 3002547446	Well Status: Drilling Well	Operator: EOG RESOURCES INCORPORATED

Operator

I certify that the foregoing is true and correct. Title 18 U.S.C. Section 1001 and Title 43 U.S.C. Section 1212, make it a crime for any person knowingly and willfully to make to any department or agency of the United States any false, fictitious or fraudulent statements or representations as to any matter within its jurisdiction. Electronic submission of Sundry Notices through this system satisfies regulations requiring a

Operator Electronic Signature: EMILY FOLLIS

Signed on: JUN 06, 2022 08:39 AM

Name: EOG RESOURCES INCORPORATED

Title: Sr. Regulatory Administrator

Street Address: 5509 Champions Drive

City: Midland **State:** TX

Phone: (432) 848-9163

Email address: emily_follis@eogresources.com

Field

Representative Name:

Street Address:

City: **State:** **Zip:**

Phone:

Email address:

BLM Point of Contact

BLM POC Name: Jonathon W Shepard

BLM POC Title: Petroleum Engineer

BLM POC Phone: 5752345972

BLM POC Email Address: jshepard@blm.gov

Disposition: Accepted

Disposition Date: 06/23/2022

Signature: Jonathon Shepard

U.S. Department of the Interior
BUREAU OF LAND MANAGEMENT

Well Name: MERCILESS 13 FED COM	Well Location: T25S / R32E / SEC 13 / NWNE / 32.1368658 / -103.6271629	County or Parish/State: LEA / NM
Well Number: 507H	Type of Well: OIL WELL	Allottee or Tribe Name:
Lease Number: NMNM110835	Unit or CA Name:	Unit or CA Number: NMNM135706
US Well Number: 3002547446	Well Status: Drilling Well	Operator: EOG RESOURCES INCORPORATED

Subsequent Report

Sundry ID: 2678022

Type of Submission: Subsequent Report

Type of Action: Drilling Operations

Date Sundry Submitted: 06/21/2022

Time Sundry Submitted: 12:35

Date Operation Actually Began: 06/04/2022

Actual Procedure: BOP/DIVERTERS/ROTATING HEAD-BREAK TEST BOP WITH CAMERON TEST UNIT, 250 PSI LOW, 10K HIGH, 10 MIN EACH TEST, TEST GOOD 6-4-2022 12 1/4" hole 6-4-2022 Intermediate Hole @ 4,858' MD, 4,839' TVD Casing shoe @ 4,843' MD, 4,825' TVD Ran 9-5/8", 40#, J55, LTC (0' - 3,794'), 9-5/8", 40#, SEAH-80, LTC (3,794' - 4,843') Cement w/ 1,340 sx Class C (2.01 yld, 12.9 ppg), followed by 355 sx Class C (1.33 yld, 14.8 ppg) Test casing to 2,200 psi for 30 min, Circ (250 bbls) 698 sx cement to surface 6-17-2022 8 3/4" HOLE 6-17-2022 Production Hole @ 18,508' MD, 10,952' TVD Casing Shoe @ 18,492 MD, 10,952' TVD Ran 5-1/2", 20#, ICYP-110, TXP BTC (MJ @ 10,318' and 18,041') Cement w/ 660 sx Class C + 3 pps Kol-Seal + 0.125 pps Pol-E-Flake, (3.18 yld, 11.0 ppg), followed by 469 sx Class C, (1.26 yld, 14.5 ppg, No casing test . Did not circ cement to surface, TOC @ 3,800' by Calc, Waiting on CBL RR 6-18-2022

Well Name: MERCILESS 13 FED COM	Well Location: T25S / R32E / SEC 13 / NWNE / 32.1368658 / -103.6271629	County or Parish/State: LEA / NM
Well Number: 507H	Type of Well: OIL WELL	Allottee or Tribe Name:
Lease Number: NMNM110835	Unit or CA Name:	Unit or CA Number: NMNM135706
US Well Number: 3002547446	Well Status: Drilling Well	Operator: EOG RESOURCES INCORPORATED

Operator

I certify that the foregoing is true and correct. Title 18 U.S.C. Section 1001 and Title 43 U.S.C. Section 1212, make it a crime for any person knowingly and willfully to make to any department or agency of the United States any false, fictitious or fraudulent statements or representations as to any matter within its jurisdiction. Electronic submission of Sundry Notices through this system satisfies regulations requiring a

Operator Electronic Signature: EMILY FOLLIS **Signed on:** JUN 21, 2022 12:35 PM

Name: EOG RESOURCES INCORPORATED

Title: Sr. Regulatory Administrator

Street Address: 5509 Champions Drive

City: Midland **State:** TX

Phone: (432) 848-9163

Email address: emily_follis@eogresources.com

Field

Representative Name:

Street Address:

City: **State:** **Zip:**

Phone:

Email address:

BLM Point of Contact

BLM POC Name: Jonathon W Shepard	BLM POC Title: Petroleum Engineer
BLM POC Phone: 5752345972	BLM POC Email Address: jshepard@blm.gov
Disposition: Accepted	Disposition Date: 07/12/2022
Signature: Jonathon Shepard	

Sante Fe Main Office
Phone: (505) 476-3441

General Information
Phone: (505) 629-6116

Online Phone Directory
<https://www.emnrd.nm.gov/ocd/contact-us>

State of New Mexico
Energy, Minerals and Natural Resources
Oil Conservation Division
1220 S. St Francis Dr.
Santa Fe, NM 87505

ACKNOWLEDGMENTS

Action 153573

ACKNOWLEDGMENTS

Operator: EOG RESOURCES INC 5509 Champions Drive Midland, TX 79706	OGRID: 7377
	Action Number: 153573
	Action Type: [C-104] Completion Packet (C-104C)

ACKNOWLEDGMENTS

<input checked="" type="checkbox"/>	I hereby certify that the required Water Use Report has been, or will be, submitted for this wells completion.
<input checked="" type="checkbox"/>	I hereby certify that the required FracFocus disclosure has been, or will be, submitted for this wells completion.

Sante Fe Main Office
Phone: (505) 476-3441

General Information
Phone: (505) 629-6116

Online Phone Directory
<https://www.emnrd.nm.gov/ocd/contact-us>

State of New Mexico
Energy, Minerals and Natural Resources
Oil Conservation Division
1220 S. St Francis Dr.
Santa Fe, NM 87505

CONDITIONS

Action 153573

CONDITIONS

Operator: EOG RESOURCES INC 5509 Champions Drive Midland, TX 79706	OGRID: 7377
	Action Number: 153573
	Action Type: [C-104] Completion Packet (C-104C)

CONDITIONS

Created By	Condition	Condition Date
plmartinez	File 3160-4 Completion Report within 10 days of BLM approval.	2/26/2026