

Well Name: FEDERAL 28-8-31	Well Location: T28N / R8W / SEC 31 / NESE / 36.6153637 / -107.7140315	County or Parish/State: SAN JUAN / NM
Well Number: 1S	Type of Well: OTHER	Allottee or Tribe Name:
Lease Number: NMSF079319	Unit or CA Name:	Unit or CA Number:
US Well Number: 300453339600S1	Operator: MORNINGSTAR OPERATING LLC	

Notice of Intent

Sundry ID: 2897490

Type of Submission: Notice of Intent

Type of Action: Plug and Abandonment

Date Sundry Submitted: 02/24/2026

Time Sundry Submitted: 12:38

Date proposed operation will begin: 10/01/2026

Procedure Description: MorningStar Operating requests approval for the attached procedure to plug and abandon the Federal 28-8-31 1S. Also attached are the WBDs.

Surface Disturbance

Is any additional surface disturbance proposed?: No

NOI Attachments

Procedure Description

Federal_28_8_31__1S_WBD_Proposed_PA_02.19.2026_20260224123433.pdf

Federal_28_8_31__1S_WBD_current_02.19.2026_20260224123421.pdf

Federal_28_8_31__1S_Proposed_PA_procedure_02.20.2026_20260224123413.pdf

Well Name: FEDERAL 28-8-31

Well Location: T28N / R8W / SEC 31 / NESE / 36.6153637 / -107.7140315

County or Parish/State: SAN JUAN / NM

Well Number: 1S

Type of Well: OTHER

Allottee or Tribe Name:

Lease Number: NMSF079319

Unit or CA Name:

Unit or CA Number:

US Well Number: 300453339600S1

Operator: MORNINGSTAR OPERATING LLC

Conditions of Approval

Specialist Review

General_Requirement_PxA_20260225102202.pdf

2897490_1S_3004533396_NOIA_KR_02252026_20260225102108.pdf

Federal_28_8_31_1S_Geo_KR_20260225102108.pdf

Operator

I certify that the foregoing is true and correct. Title 18 U.S.C. Section 1001 and Title 43 U.S.C. Section 1212, make it a crime for any person knowingly and willfully to make to any department or agency of the United States any false, fictitious or fraudulent statements or representations as to any matter within its jurisdiction. Electronic submission of Sundry Notices through this system satisfies regulations requiring a

Operator Electronic Signature: CONNIE BLAYLOCK

Signed on: FEB 24, 2026 12:35 PM

Name: MORNINGSTAR OPERATING LLC

Title: Regulatory Technician

Street Address: 400 W 7th St.

City: Forth Worth

State: TX

Phone: (817) 334-7882

Email address: CBLAYLOCK@MSPARTNERS.COM

Field

Representative Name: Amy Byars

Street Address:

City:

State:

Zip:

Phone:

Email address: abyars@txopartners.com

BLM Point of Contact

BLM POC Name: KENNETH G RENNICK

BLM POC Title: Petroleum Engineer

BLM POC Phone: 5055647742

BLM POC Email Address: krennick@blm.gov

Disposition: Approved

Disposition Date: 02/25/2026

Signature: Kenneth Rennick



United States Department of the Interior

BUREAU OF LAND MANAGEMENT
Farmington District Office
6251 College Boulevard, Suite A
Farmington, New Mexico 87402
<http://www.blm.gov/nm>



CONDITIONS OF APPROVAL

February 25, 2026

Notice of Intent – Plug and Abandonment

Operator: MorningStar Operating LLC
Lease: NMSF 0079319
Well(s): Federal 28 8 31 001S, US Well # 30-045-33396
Sundry Notice ID #: 2897490

The Notice of Intent to Plug and Abandon is accepted with the following Conditions of Approval (COA):

1. Plugging operations authorized are subject to the attached "General Requirements for Permanent Abandonment of Wells on Federal and Indian Lease."
2. The following modifications to your plugging program are to be made:
 - a. No changes to the procedure.
3. **Notification:** Farmington Office is to be notified at least 24 hours before the plugging operations commence at (505) 564 7750.

You are also required to place cement excesses per 4.2 and 4.4 of the attached General Requirements.

K. Rennick 2/25/2026

**GENERAL REQUIREMENTS FOR
PERMANENT ABANDONMENT OF WELLS ON FEDERAL AND INDIAN LEASES
FARMINGTON FIELD OFFICE**

- 1.0 The approved plugging plans may contain variances from the following minimum general requirements.
- 1.1 Modification of the approved plugging procedure is allowed only with the prior approval of the Authorized Officer, Farmington Field Office.
 - 1.2 Requirements may be added to address specific well conditions.
- 2.0 Materials used must be accurately measured. (densometer/scales)
- 3.0 A tank or lined pit must be used for containment of any fluids from the wellbore during plugging operations and all pits are to be fenced with woven wire. These pits will be fenced on three sides and once the rig leaves location, the fourth side will be fenced.
- 3.1 Pits are not to be used for disposal of any hydrocarbons. If hydrocarbons are present in the pit, the fluids must be removed prior to filling in.
- 4.0 All cement plugs are to be placed through a work string. Cement may be bull-headed down the casing with prior approval. Cement caps on top of bridge plugs or cement retainers may be placed by dump bailer.
- 4.1 The cement shall be as specified in the approved plugging plan.
 - 4.2 All cement plugs placed inside casing shall have sufficient volume to fill a minimum of 100' of the casing, or annular void(s) between casings, plus an excess volume sufficient to provide for 50 linear feet of fill above the plug.
 - 4.3 Surface plugs may be no less than 50' in length.
 - 4.4 All cement plugs placed to fill annular void(s) between casing and the formation shall be of sufficient volume to fill a minimum of 100' of the annular space plus 100% excess, calculated using the bit size, or 100' of annular capacity, determined from a caliper log, plus an excess volume sufficient to provide for 50 linear feet of fill above the plug.
 - 4.5 All cement plugs placed to fill an open hole shall be of sufficient volume to fill a minimum of 100' of hole, as calculated from a caliper log, plus an excess volume sufficient to provide for 50 linear feet of fill above the plug. In the absence of a caliper log, an excess of 100% shall be required.
 - 4.6 **A cement bond log or other accepted cement evaluation tool is required to be run if one had not been previously ran or cement did not circulate to surface during the original casing cementing job or subsequent cementing jobs.**

5.0 All cement plugs spotted across, or above, any exposed zone(s), when; the wellbore is not full of fluid or the fluid level will not remain static, and in the case of lost circulation or partial returns during cement placement, shall be tested by tagging with the work string.

- 5.1 The top of any cement plug verified by tagging must be at or above the depth specified in the approved plan, without regard to any excess.
- 5.2 Testing will not be required for any cement plug that is mechanically contained by use of a bridge plug and/or cement retainer, if casing integrity has been established.
- 5.3 Any cement plug which is the only isolating medium, for a fresh water interval or a zone containing a prospectively valuable deposit of minerals, shall be tested by tagging.
- 5.4 If perforations are required below the surface casing shoe, a 30 minute minimum wait time will be required to determine if gas and/or water flows are present. If flow is present, the well will be shut-in for a minimum of one hour and the pressure recorded. Short or long term venting may be necessary to evacuate trapped gas. **If only a water flow occurs with no associated gas, shut well in and record the pressures. Contact the Engineer as it may be necessary to change the cement weight and additives.**

6.0 Before setting any cement plugs the hole needs to be rolled. All wells are to be controlled by means of a fluid that is to be of a weight and consistency necessary to stabilize the wellbore. This fluid shall be left in place as filler between all plugs.

- 6.1 Drilling mud may be used as the wellbore fluid in open hole plugging operations.
- 6.2 The wellbore fluid used in cased holes shall be of sufficient weight to balance known pore pressures in all exposed formations.

7.0 A blowout preventer and related equipment (BOPE) shall be installed and tested prior to working in a wellbore with any exposed zone(s); (1) that are over pressured, (2) where the pressures are unknown, or (3) known to contain H₂S.

8.0 Within 30 days after plugging work is completed, file a Sundry Notice, Subsequent Report of Abandonment (Form 3160-5), through the Automated Fluid Minerals Support System (AFMSS) with the Field Manager, Bureau of Land Management, 6251 College Blvd., Suite A, Farmington, NM 87402. The report should show the manner in which the plugging work was carried out, the extent, by depth(s), of cement plugs placed, and the size and location, by depth(s), of casing left in the well. Show date well was plugged.

9.0 All permanently abandoned wells are to be marked with a permanent monument as specified in 43 CFR 3162.6(d). Unless otherwise approved.

10.0 If this well is located in a Specially Designated Area (SDA), compliance with the appropriate seasonal closure requirements will be necessary.

All of the above are minimum requirements. Failure to comply with the above conditions of approval may result in an assessment for noncompliance and/or a Shut-in Order being issued pursuant to 43 CFR 3163.1. You are further advised that any instructions, orders or decisions issued by the Bureau of Land Management are subject to administrative review pursuant to 43 CFR 3165.3 and appeal pursuant to 43 CFR 3165.4 and 43 CFR 4.700.

BLM - FFO - Geologic Report

Date Completed 2/25/2026

Well No. Federal 28 8 31 001S
US Well No. 30-045-33396
Lease No. NMSF 0079319

Operator MorningStar Operating LLC Formation Basin Fruitland Coal

Geologic Formations	Est. tops	Remarks
Surface Casing	312	
Nacimiento	894	
Ojo Alamo	2020	
Kirtland	2152	
Fruitland Fm	2650	
Top Perforation	2771	
Bottom	2911	
Pictured Cliffs	2914	

Remarks:

Reference Well:

Operator selected formation tops are appropriate for the area. No changes to the procedure.

NA

Prepared by: Kenneth Rennick

Proposed P&A Procedure_02.20.2026

Proposed P&A Procedure

Federal 28-8-31 1S API 3004533396

Notify Farmington BLM Office at least 24hrs in advance to plugging operations 505 564-7750

Notify NMOCD at least 24hrs in advance to plugging operations via email at

monica.kuehling@emnrd.nm.gov and loren.diede@emnrd.nm.gov

- All Cement Class G 15.8 ppg 1.15 cuft/sk yield
- Tbg, Csg, and Bradenhead pressure to be recorded and reported on each daily report to include the initial move in pressures
- CaCl₂ will be used for plugs requiring WOC
- Casing Pressure Testing will be completed to 500 psi
 - After setting CIBP/CICR above producing interval(s)
 - Before pumping each subsequent cement plug (between plug 1 and surface plug)
 - Surface plug no pressure test – pumping/circulating cement to surface
 - For each plug, if casing pressure test successful, pump required cement volume and required displacement and move to next plug, circulating tubing clean as required
 - For each plug, if casing pressure test failed, pump required cement volume and required displacement, move tubing uphole and circulate tubing clean as required - WOC 4 hrs, tag cement and confirm good tag with BLM/NMOCD onsite representative before moving to next plug
- A successful casing pressure test allows for 10% pressure loss in 10 min – confirm good test each time with BLM/NMOCD onsite representative

Proposed P&A Procedure_02.20.2026

Proposed Procedure

1. Make necessary advance 24 hr notifications as required.
2. MIRU P&A services.
3. POOH existing rod string laying down. Send rods to yard. Send downhole pump to pump company for rebuild/storage.
4. Pull existing tbg OOH and visually inspect. If existing tubing string NOT good to use for P&A, MI 2 3/8" workstring.
5. MIRU wireline. Run gauge ring to ~2750'.
6. Set CICR ~2721'.
7. Load/top off hole with FW in preparation for CBL.
 - a. Keep hole loaded as necessary to ensure CBL run to surface.
8. Run CBL from CICR to surface. Send CBL for review to krennick@blm.gov, vlucero@blm.gov, monica.kuehling@emnrd.nm.gov, loren.diede@emnrd.nm.gov, rberry@txopartners.com.
 - a. Revise plugging plan if required.
9. TIH tubing/workstring with CICR stringer.
10. Plug 1 (PC/FC perfs)
 - a. Attempt to inject below retainer
 - i. If inj established, pump **29sx** cmt below retainer and **20sx** cmt above retainer
 - ii. If inj not established, spot **20sx** cmt on top of retainer
 - iii. 2964-2550'.
11. Plug 2 (Kirtland/Ojo Alamo)
 - a. Balance plug **33sx** cement plug from 2202-1920'.
12. Plug 2 (Nacimiento)
 - a. Balance plug **18sx** cement plug from 944-794'.
13. Plug 3 (surface shoe circulation attempt)
 - a. Perforate 362'.
 - b. Attempt to establish circulation...
 - i. If established, pump outside plug **69sx** cmt and inside plug **43sx** cmt.
 - ii. if none, drop down to 412' and pump balance plug to surface **48sx** cmt.
 - c. Ensure cement at surface on all strings of casing, top off as needed.
14. Cut off wellhead below surface casing flange.
15. Install P&A Marker.

Proposed P&A Procedure_02.20.2026

Estimated 119 sx to 212 sx cement needed in total.

Please make sure all excess volumes are as follows:

4.2 All cement plugs placed inside casing shall have sufficient volume to fill a minimum of 100' of the casing, or annular void(s) between casings, plus an excess volume sufficient to provide for 50 linear feet of fill above the plug.

4.4 All cement plugs placed to fill annular void(s) between casing and the formation shall be of sufficient volume to fill a minimum of 100' of the annular space plus 100% excess, calculated using the bit size, or 100' of annular capacity, determined from a caliper log, plus an excess volume sufficient to provide for 50 linear feet of fill above the plug.

MorningStar Operating, LLC

Prepared by: D. Poindexter
Date: 08/09/2018
Updated: Bberry 02.19.2026

KB = 6731'
GL = 6,726'
API# 30-045-33396

Spud Date: 03/18/2006
Date Completed: 03/29/2006

Federal 28-8-31 #1S San Juan County, NM S31 T28N R08W

TD - 3,134' MD

12 1/4" hole to 317'.
Surface Csg: 7 jts 8 5/8" 24#/ft J-55 STC
Setting Depth: 312'

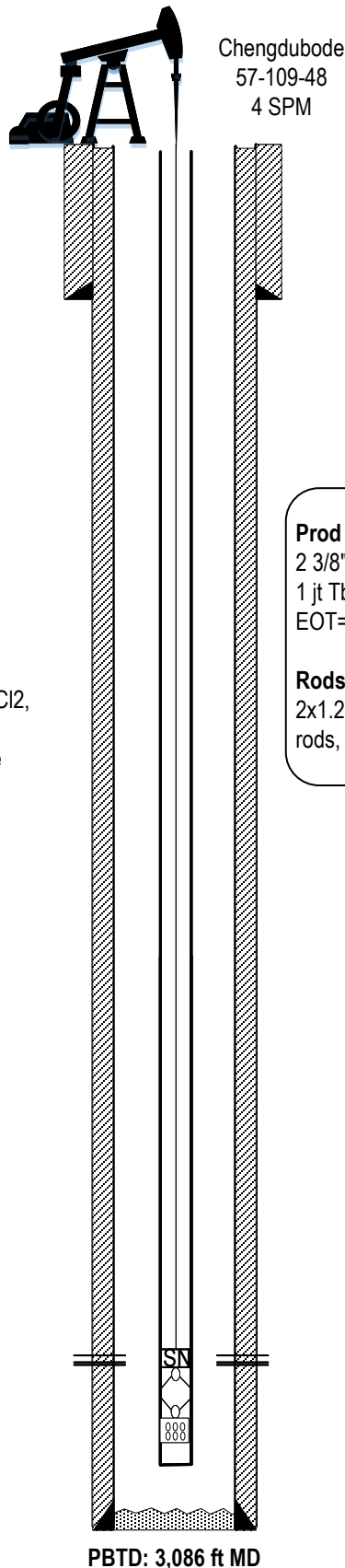
Cement
275sx Class B, 2% CaCl₂, 1/4#/sk flocele (324 ft³)
Circulated 25 bbls cement to surface.

7 7/8" hole to 3,134'.
Production Csg: 70 jts 5-1/2" 15.5#/ft J-55 LT&C
Setting Depth: 3,127'

Cement:
Lead: 310sx 65/35 Class B POZ, 6% gel, 2% CaCl₂,
10#/sk gilsonite, 1/2 #/sk flocele
Tail: 125sx Class B, 5#/sk gilsonite, 1/4#/sk flocele
Circulated 10 bbls cement to surface.

Perfs
FC: 0.43" 4jspf, 128 holes
2,771' - 2,911'

Frac
42,700 gals 70Q Slickwater Foam
15,560# 40/70 sand
171,530# 20/40 sand



Surface Casing: 312'
*Nacimiento: 894'
*Ojo Alamo: 2020'
*Kirtland: 2152'
*Fruitland: 2650'
*Pictured Cliffs: 2914'
*Tops from NMOCD website
and completions reporting

Prod Tbg 08/26/2013:
2 3/8" 4.7# J-55 tbg
1 jt Tbg, 8' Perf Sub, SN, 93jts.
EOT=2,960' ; SN=2,932'

Rods/Pump 08/27/2013:
2x1.25x6x7x10 RHAC-HVR Pump, 4 K bars, 112 3/4"
rods, 2-2', 4', 6' sub.

MorningStar Operating, LLC

Prepared by: Bberry
02.19.2026

KB = 6731'
GL = 6726'
API# 30-045-33396

Spud Date: 03/18/2006
Date Completed: 03/29/2006

Federal 28-8-31 #1S
San Juan County, NM
S31 T28N R08W

Proposed P&A

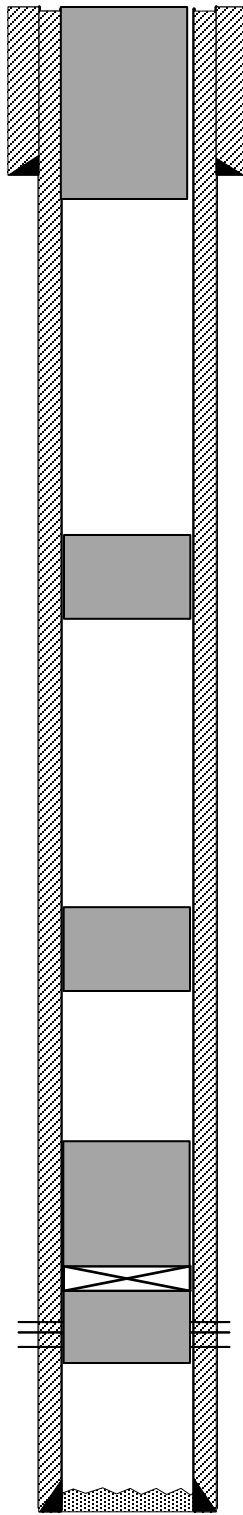
TD – 3134' MD

12 1/4" hole to 317'.
Surface Csg: 7 jts 8 5/8" 24#/ft J-55 STC
Setting Depth: 312'

Cement
275sx Class B, 2% CaCl2, 1/4#/sk flocele (324 ft³)
Circulated 25 bbls cement to surface.

7 7/8" hole to 3134'.
Production Csg: 70 jts 5-1/2" 15.5#/ft J-55 LT&C
Setting Depth: 3127'

Cement:
Lead: 310sx 65/35 Class B POZ, 6% gel, 2% CaCl2,
10#/sk gilsonite, 1/2 #/sk flocele
Tail: 125sx Class B, 5#/sk gilsonite, 1/4#/sk flocele
Circulated 10 bbls cement to surface.



Plug 4 (Surf Csg Shoe)
Perf 362' attempt to establish circ – if circ established, pump 69 sx cmt outside plug plus 43 sx cmt inside plug – if no circ drop down to 412' and pump balance plug 48sx cmt (362-0')

Plug 3 (Nacimiento)
Balance plug 18 sx cmt (944-794')

Plug 2 (Kirtland/Ojo Alamo)
Balance plug 33 sx cmt (2202-1920')

Plug 1 (PC/FC perfs)
Set CICR ~2721' – attempt to establish inj below CICR – if inj established, pump 29 sx cmt below retainer, 20 sx cmt above CICR – if no inj established, 20 sx cmt above retainer
WOC Tag Plug – (2964-2550')

Perfs
2771' – 2911'

PBTD: 3086 ft MD

Surface Casing: 312'
*Nacimiento: 894'
*Ojo Alamo: 2020'
*Kirtland: 2152'
*Fruitland: 2650'
*Pictured Cliffs: 2914'
*Tops from NMOCD website and completions reporting

Sante Fe Main Office
Phone: (505) 476-3441

General Information
Phone: (505) 629-6116

Online Phone Directory
<https://www.emnrd.nm.gov/ocd/contact-us>

State of New Mexico
Energy, Minerals and Natural Resources
Oil Conservation Division
1220 S. St Francis Dr.
Santa Fe, NM 87505

CONDITIONS

Action 557782

CONDITIONS

Operator: MorningStar Operating LLC 400 W 7th St Fort Worth, TX 76102	OGRID: 330132
	Action Number: 557782
	Action Type: [C-103] NOI Plug & Abandon (C-103F)

CONDITIONS

Created By	Condition	Condition Date
loren.diede	Notify the OCD inspection supervisor via email 24 hours prior to beginning Plug & Abandon (P&A) operations.	2/26/2026
loren.diede	Submit photo and GPS coordinates of the P&A marker with the C-103P subsequent P&A report. The API# on the marker must be clearly legible.	2/26/2026