

District I
1625 N. French Dr., Hobbs, NM 88240
District II
811 S. First St., Artesia, NM 88210
District III
1000 Rio Brazos Rd., Aztec, NM 87410
District IV
1220 S. St. Francis Dr., Santa Fe, NM 87505

State of New Mexico
Energy, Minerals & Natural
Resources

Form C-104
Revised August 1, 2011

Submit one copy to appropriate District Office

Oil Conservation Division
1220 South St. Francis Dr.

AMENDED REPORT

I. REQUEST FOR ALLOWABLE MINERAL AUTHORIZATION TO TRANSPORT

¹ Operator name and Address EOG RESOURCES INC PO BOX 2267 MIDLAND, TEXAS 79702		² OGRID Number 7377
		³ Reason for Filing Code/ Effective Date NW 10/15/2022
⁴ API Number 30 - 015 -48259	⁵ Pool Name PURPLE SAGE; WOLFCAMP (GAS)	⁶ Pool Code 98220
⁷ Property Code 329970	⁸ Property Name DEEP ELEM 4 FEDERAL COM	⁹ Well Number 733H

II. ¹⁰ Surface Location

Ul or lot no.	Section	Township	Range	Lot Idn	Feet from the	North/South Line	Feet from the	East/West line	County
M	4	26S	31E		577	SOUTH	886	WEST	EDDY

¹¹ Bottom Hole Location

UL or lot no.	Section	Township	Range	Lot Idn	Feet from the	North/South line	Feet from the	East/West line	County
M	16	26S	31E		719	SOUTH	315	WEST	EDDY
¹² Lse Code	¹³ Producing Method Code FLOWING	¹⁴ Gas Connection Date	¹⁵ C-129 Permit Number	¹⁶ C-129 Effective Date	¹⁷ C-129 Expiration Date				

III. Oil and Gas Transporters

¹⁸ Transporter OGRID	¹⁹ Transporter Name and Address	²⁰ O/G/W
372812	EOGRM	OIL
151618	ENTERPRISE FIELD SERVICES	GAS
298751	REGENCY FIELD SERVICES	GAS
36785	DCP MIDSTREAM	GAS

IV. Well Completion Data

²¹ Spud Date 04/26/2022	²² Ready Date 10/15/2022	²³ TD 21,627'	²⁴ PBDT 21,599'	²⁵ Perforations 12,034 - 21,599'	²⁶ DHC, MC
²⁷ Hole Size	²⁸ Casing & Tubing Size	²⁹ Depth Set	³⁰ Sacks Cement		
13 1/2"	10 3/4"	1305'	550 SXS CL C/CIRC		
9 7/8"	8 3/4"	11,103'	1491 SXS CL C&H/CIRC		
7 7/8"	6"	21,606'	1760 SXS CL H TOC 2430' CBL		

V. Well Test Data

³¹ Date New Oil 10/15/2022	³² Gas Delivery Date 10/15/2022	³³ Test Date 10/23/2022	³⁴ Test Length 24 HRS	³⁵ Tbg. Pressure	³⁶ Csg. Pressure 3215
³⁷ Choke Size 91	³⁸ Oil 4081	³⁹ Water 7267	⁴⁰ Gas 19,452		⁴¹ Test Method

⁴² I hereby certify that the rules of the Oil Conservation Division have been complied with and that the information given above is true and complete to the best of my knowledge and belief.

Signature: Kay Maddox
Printed name: Kay Maddox
Title: SENIOR REGULATORY SPECIALIST
E-mail Address: kay_maddox@eogresources.com
Date: 11/01/2022 Phone: 432-638-8475

OIL CONSERVATION DIVISION
Approved by:
Title:
Approval Date:

DISTRICT I
1625 N. French Dr., Hobbs, NM 88240
Phone: (575) 393-6161 Fax: (575) 393-0720
DISTRICT II
811 S. First St., Artesia, NM 88210
Phone: (575) 748-1283 Fax: (575) 748-9720
DISTRICT III
1000 Rio Brazos Rd., Aztec, NM 87410
Phone: (505) 334-6178 Fax: (505) 334-6170
DISTRICT IV
1220 S. St. Francis Dr., Santa Fe, NM 87505
Phone: (505) 476-3460 Fax: (505) 476-3462

State of New Mexico
Energy, Minerals & Natural Resources Department
OIL CONSERVATION DIVISION
1220 South St. Francis Dr.
Santa Fe, New Mexico 87505

As-Completed Plat
Revised August 1, 2011
Submit one copy to appropriate
District Office
 AMENDED REPORT

AS-COMPLETED PLAT

API Number 30-015- 48259	Pool Code 98220	Pool Name PURPLE SAGE; WOLFCAMP (GAS)
Property Code 329970	Property Name DEEP ELEM 4 FED COM	
Well Number 733H	Elevation 3288'	
OGRID No. 7377	Operator Name EOG RESOURCES, INC.	

Surface Location

UL or lot no.	Section	Township	Range	Lot Idn	Feet from the	North/South line	Feet from the	East/West line	County
M	4	26 S	31 E		577	SOUTH	886	WEST	EDDY

Bottom Hole Location If Different From Surface

UL or lot no.	Section	Township	Range	Lot Idn	Feet from the	North/South line	Feet from the	East/West line	County
M	16	26 S	31 E		719	SOUTH	315	WEST	EDDY
Dedicated Acres 1280.00	Joint or Infill	Consolidated Code	Order No.						

No allowable will be assigned to this completion until all interests have been consolidated or a non-standard unit has been approved by the division.

SURFACE LOCATION
NEW MEXICO EAST
NAD 1983
X = 709975'
Y = 388295'
LAT. = N 32.066333°
LONG. = W 103.788932°
NAD 1927
X = 668789'
Y = 388237'
LAT. = N 32.066208°
LONG. = W 103.788456°

KICK OFF POINT
NEW MEXICO EAST
NAD 1983
X = 709414'
Y = 387824'
LAT. = N 32.065046°
LON. = W 103.790749°
NAD 1927
X = 668228'
Y = 387766'
LAT. = N 32.064921°
LONG. = W 103.790273°
MD. = 11,265'

FIRST TAKE POINT
NEW MEXICO EAST
NAD 1983
X = 709443'
Y = 387364'
LAT. = N 32.063782°
LON. = W 103.790663°
NAD 1927
X = 668257'
Y = 387307'
LAT. = N 32.063657°
LONG. = W 103.790187°
MD. = 12,034'

BOTTOM HOLE LOCATION
NEW MEXICO EAST
NAD 1983
X = 709447'
Y = 377778'
LAT. = N 32.037432°
LONG. = W 103.790807°
NAD 1927
X = 668260'
Y = 377721'
LAT. = N 32.037307°
LONG. = W 103.790332°
MD. = 21,627'

LAST TAKE POINT
NEW MEXICO EAST
NAD 1983
X = 709447'
Y = 377806'
LAT. = N 32.037509°
LON. = W 103.790807°
NAD 1927
X = 668260'
Y = 377749'
LAT. = N 32.037384°
LONG. = W 103.790332°
MD. = 21,599'

POINT UTM ZONE 13 COORDINATES
SBL X=2015459.1 Y=11641606.4
KOP X=2014901.6 Y=11641332.1
FTP X=2014933.4 Y=11640872.6
LTP X=2014995.8 Y=11631316.8
BHL X=2014996.1 Y=11631288.8

OPERATOR CERTIFICATION

I hereby certify that the information contained herein is true and complete to the best of my knowledge and belief, and that this organization either owns a working interest or unleased mineral interest in the land including the proposed bottom hole location or has a right to drill this well at this location pursuant to a contract with an owner of such a mineral or working interest, or to voluntary pooling agreement or a compulsory pooling order heretofore entered by the division.

Kay Maddox 10/11/2022
Signature Date

KAY MADDOX
Print Name

KAY.MADDOX@EOGRESOURCES.COM
E-mail Address

SURVEYORS CERTIFICATION

I hereby certify that the well location shown on this plat was plotted from field notes of actual surveys made by me or under my supervision, and that the same is true and correct to the best of my belief.

FEBRUARY 25, 2022
Date of Survey

Job No.: EOG.B190020
BRANDON A. MOSER, N.M.P.L.S.
Certificate Number 22502



Midland

Eddy County, NM (NAD 83 NME)

Deep Elem 4 Fed Com

#733H

OH

Design: OH

Final PVA

09 July, 2022



Company:	Midland	Local Co-ordinate Reference:	Well #733H
Project:	Eddy County, NM (NAD 83 NME)	TVD Reference:	KB = 32' @ 3320.0usft
Site:	Deep Elem 4 Fed Com	MD Reference:	KB = 32' @ 3320.0usft
Well:	#733H	North Reference:	Grid
Wellbore:	OH	Survey Calculation Method:	Minimum Curvature
Design:	OH	Database:	PEDM

Project	Eddy County, NM (NAD 83 NME)		
Map System:	US State Plane 1983	System Datum:	Mean Sea Level
Geo Datum:	North American Datum 1983		
Map Zone:	New Mexico Eastern Zone		

Site	Deep Elem 4 Fed Com		
Site Position:		Northing:	388,239.00 usft
From:	Map	Easting:	713,374.00 usft
Position Uncertainty:	0.0 usft	Slot Radius:	13-3/16 "
		Latitude:	32° 3' 58.075 N
		Longitude:	103° 46' 40.657 W
		Grid Convergence:	0.29 °

Well	#733H					
Well Position	+N/-S	0.0 usft	Northing:	388,295.00 usft	Latitude:	32° 3' 58.800 N
	+E/-W	0.0 usft	Easting:	709,975.00 usft	Longitude:	103° 47' 20.154 W
Position Uncertainty		0.0 usft	Wellhead Elevation:	usft	Ground Level:	3,288.0 usft

Wellbore	OH				
Magnetics	Model Name	Sample Date	Declination (°)	Dip Angle (°)	Field Strength (nT)
	IGRF2020	6/5/2022	6.52	59.69	47,278.17206231

Design	OH				
Audit Notes:					
Version:	1.0	Phase:	ACTUAL	Tie On Depth:	0.0
Vertical Section:		Depth From (TVD) (usft)	+N/-S (usft)	+E/-W (usft)	Direction (°)
		0.0	0.0	0.0	182.68

Survey Program	Date	7/9/2022		
From (usft)	To (usft)	Survey (Wellbore)	Tool Name	Description
182.0	21,627.0	Gordon MWD (OH)	EOG MWD+IFR1	MWD + IFR1

Company:	Midland	Local Co-ordinate Reference:	Well #733H
Project:	Eddy County, NM (NAD 83 NME)	TVD Reference:	KB = 32' @ 3320.0usft
Site:	Deep Elem 4 Fed Com	MD Reference:	KB = 32' @ 3320.0usft
Well:	#733H	North Reference:	Grid
Wellbore:	OH	Survey Calculation Method:	Minimum Curvature
Design:	OH	Database:	PEDM

Survey											
MD (usft)	Inc (°)	Azi (azimuth) (°)	TVD (usft)	N/S (usft)	E/W (usft)	DLeg (°/100usft)	Build (°/100usft)	Turn (°/100usft)	High to Plan (usft)	Right to Plan (usft)	
0.0	0.00	0.00	0.0	0.0	0.0	0.00	0.00	0.00	0.0	0.0	0.0
182.0	0.63	148.33	182.0	-0.9	0.5	0.35	0.35	0.00	0.0	0.0	0.0
212.0	0.54	192.85	212.0	-1.1	0.6	1.50	-0.30	148.40	0.0	0.0	0.0
302.0	0.89	162.70	302.0	-2.2	0.7	0.56	0.39	-33.50	0.0	0.0	0.0
391.0	0.78	181.02	391.0	-3.5	0.9	0.32	-0.12	20.58	0.0	0.0	0.0
482.0	0.70	155.21	482.0	-4.6	1.1	0.37	-0.09	-28.36	0.0	0.0	0.0
572.0	0.86	181.89	572.0	-5.8	1.3	0.44	0.18	29.64	0.0	0.0	0.0
661.0	0.83	176.82	661.0	-7.1	1.3	0.09	-0.03	-5.70	0.0	0.0	0.0
759.0	0.44	126.86	758.9	-8.0	1.7	0.66	-0.40	-50.98	0.0	0.0	0.0
853.0	0.28	151.57	852.9	-8.4	2.1	0.23	-0.17	26.29	0.0	0.0	0.0
948.0	0.22	212.96	947.9	-8.8	2.1	0.27	-0.06	64.62	0.0	0.0	0.0
1,042.0	0.15	40.11	1,041.9	-8.9	2.1	0.39	-0.07	-183.88	0.0	0.0	0.0
1,136.0	0.38	131.67	1,135.9	-9.0	2.4	0.44	0.24	97.40	0.0	0.0	0.0
1,231.0	0.22	94.88	1,230.9	-9.2	2.8	0.26	-0.17	-38.73	0.0	0.0	0.0
1,336.0	1.09	99.51	1,335.9	-9.4	4.0	0.83	0.83	4.41	0.0	0.0	0.0
1,524.0	3.57	354.19	1,523.8	-3.8	5.2	2.13	1.32	-56.02	0.0	0.0	0.0
1,618.0	4.40	319.52	1,617.6	1.8	2.5	2.66	0.88	-36.88	0.0	0.0	0.0
1,713.0	4.39	293.25	1,712.3	6.0	-3.2	2.10	-0.01	-27.65	0.0	0.0	0.0
1,807.0	4.04	260.02	1,806.1	6.9	-9.8	2.59	-0.37	-35.35	0.0	0.0	0.0
1,902.0	5.90	242.51	1,900.7	4.0	-17.4	2.51	1.96	-18.43	0.0	0.0	0.0
1,996.0	7.78	230.79	1,994.1	-2.2	-26.6	2.48	2.00	-12.47	0.0	0.0	0.0
2,091.0	9.82	228.89	2,087.9	-11.6	-37.7	2.17	2.15	-2.00	0.0	0.0	0.0
2,185.0	10.42	227.90	2,180.5	-22.6	-50.0	0.66	0.64	-1.05	0.0	0.0	0.0
2,280.0	10.19	227.72	2,273.9	-34.0	-62.6	0.24	-0.24	-0.19	0.0	0.0	0.0
2,374.0	10.31	228.89	2,366.4	-45.1	-75.1	0.26	0.13	1.24	0.0	0.0	0.0
2,468.0	10.26	229.50	2,458.9	-56.1	-87.8	0.13	-0.05	0.65	0.0	0.0	0.0
2,657.0	9.80	236.26	2,645.1	-76.0	-114.0	0.67	-0.24	3.58	0.0	0.0	0.0

Company: Midland
Project: Eddy County, NM (NAD 83 NME)
Site: Deep Elem 4 Fed Com
Well: #733H
Wellbore: OH
Design: OH

Local Co-ordinate Reference: Well #733H
TVD Reference: KB = 32' @ 3320.0usft
MD Reference: KB = 32' @ 3320.0usft
North Reference: Grid
Survey Calculation Method: Minimum Curvature
Database: PEDM

Survey												
MD (usft)	Inc (°)	Azi (azimuth) (°)	TVD (usft)	N/S (usft)	E/W (usft)	DLeg (°/100usft)	Build (°/100usft)	Turn (°/100usft)	High to Plan (usft)	Right to Plan (usft)		
2,751.0	9.82	237.92	2,737.7	-84.7	-127.4	0.30	0.02	1.77	0.0	0.0		
2,941.0	8.75	238.25	2,925.2	-100.9	-153.5	0.56	-0.56	0.17	0.0	0.0		
3,035.0	7.73	236.73	3,018.2	-108.1	-164.8	1.11	-1.09	-1.62	0.0	0.0		
3,130.0	9.14	237.84	3,112.2	-115.6	-176.6	1.49	1.48	1.17	0.0	0.0		
3,223.0	8.37	238.26	3,204.1	-123.1	-188.6	0.83	-0.83	0.45	0.0	0.0		
3,318.0	7.03	239.51	3,298.2	-129.7	-199.5	1.42	-1.41	1.32	0.0	0.0		
3,412.0	8.43	237.93	3,391.4	-136.3	-210.3	1.51	1.49	-1.68	0.0	0.0		
3,507.0	8.94	228.46	3,485.3	-144.9	-221.7	1.60	0.54	-9.97	0.0	0.0		
3,601.0	8.00	224.63	3,578.3	-154.4	-231.7	1.17	-1.00	-4.07	0.0	0.0		
3,696.0	10.05	223.87	3,672.1	-165.0	-242.1	2.16	2.16	-0.80	0.0	0.0		
3,790.0	10.74	217.00	3,764.6	-178.0	-253.1	1.51	0.73	-7.31	0.0	0.0		
3,885.0	10.83	209.25	3,857.9	-192.8	-262.8	1.53	0.09	-8.16	0.0	0.0		
3,980.0	10.22	206.51	3,951.3	-208.1	-270.9	0.83	-0.64	-2.88	0.0	0.0		
4,074.0	9.68	215.34	4,043.9	-222.1	-279.2	1.72	-0.57	9.39	0.0	0.0		
4,169.0	8.68	215.82	4,137.7	-234.4	-288.0	1.06	-1.05	0.51	0.0	0.0		
4,263.0	8.75	216.48	4,230.6	-245.9	-296.4	0.13	0.07	0.70	0.0	0.0		
4,358.0	9.08	217.47	4,324.4	-257.6	-305.3	0.38	0.35	1.04	0.0	0.0		
4,452.0	9.10	218.07	4,417.2	-269.4	-314.4	0.10	0.02	0.64	0.0	0.0		
4,546.0	8.63	217.14	4,510.1	-280.9	-323.2	0.52	-0.50	-0.99	0.0	0.0		
4,640.0	8.36	216.75	4,603.1	-292.0	-331.6	0.29	-0.29	-0.41	0.0	0.0		
4,735.0	8.12	218.54	4,697.1	-302.7	-339.9	0.37	-0.25	1.88	0.0	0.0		
4,923.0	9.21	234.71	4,883.0	-321.8	-360.4	1.41	0.58	8.60	0.0	0.0		
5,018.0	9.04	233.97	4,976.8	-330.6	-372.7	0.22	-0.18	-0.78	0.0	0.0		
5,112.0	8.13	234.21	5,069.7	-338.8	-384.0	0.97	-0.97	0.26	0.0	0.0		
5,206.0	8.12	234.22	5,162.8	-346.6	-394.8	0.01	-0.01	0.01	0.0	0.0		
5,301.0	7.95	234.44	5,256.9	-354.3	-405.6	0.18	-0.18	0.23	0.0	0.0		
5,394.0	7.90	233.24	5,349.0	-361.9	-415.9	0.19	-0.05	-1.29	0.0	0.0		

Company:	Midland	Local Co-ordinate Reference:	Well #733H
Project:	Eddy County, NM (NAD 83 NME)	TVD Reference:	KB = 32' @ 3320.0usft
Site:	Deep Elem 4 Fed Com	MD Reference:	KB = 32' @ 3320.0usft
Well:	#733H	North Reference:	Grid
Wellbore:	OH	Survey Calculation Method:	Minimum Curvature
Design:	OH	Database:	PEDM

Survey												
MD (usft)	Inc (°)	Azi (azimuth) (°)	TVD (usft)	N/S (usft)	E/W (usft)	DLeg (°/100usft)	Build (°/100usft)	Turn (°/100usft)	High to Plan (usft)	Right to Plan (usft)		
5,489.0	8.00	233.45	5,443.1	-369.7	-426.5	0.11	0.11	0.22	0.0	0.0		
5,583.0	7.89	233.35	5,536.1	-377.5	-436.9	0.12	-0.12	-0.11	0.0	0.0		
5,677.0	7.98	231.12	5,629.2	-385.4	-447.2	0.34	0.10	-2.37	0.0	0.0		
5,771.0	7.64	230.87	5,722.4	-393.5	-457.1	0.36	-0.36	-0.27	0.0	0.0		
5,865.0	7.40	231.56	5,815.6	-401.2	-466.7	0.27	-0.26	0.73	0.0	0.0		
5,959.0	7.16	230.89	5,908.8	-408.6	-476.0	0.27	-0.26	-0.71	0.0	0.0		
6,054.0	7.01	229.32	6,003.1	-416.2	-485.0	0.26	-0.16	-1.65	0.0	0.0		
6,149.0	6.85	230.71	6,097.4	-423.5	-493.7	0.24	-0.17	1.46	0.0	0.0		
6,243.0	6.54	229.17	6,190.8	-430.6	-502.1	0.38	-0.33	-1.64	0.0	0.0		
6,338.0	3.67	215.24	6,285.4	-436.6	-508.0	3.27	-3.02	-14.66	0.0	0.0		
6,432.0	1.40	172.53	6,379.3	-440.2	-509.6	2.99	-2.41	-45.44	0.0	0.0		
6,526.0	1.31	137.36	6,473.3	-442.1	-508.7	0.88	-0.10	-37.41	0.0	0.0		
6,620.0	0.97	146.96	6,567.2	-443.6	-507.5	0.41	-0.36	10.21	0.0	0.0		
6,714.0	1.09	167.01	6,661.2	-445.1	-506.9	0.40	0.13	21.33	0.0	0.0		
6,809.0	1.15	186.46	6,756.2	-446.9	-506.8	0.40	0.06	20.47	0.0	0.0		
6,903.0	1.23	194.94	6,850.2	-448.9	-507.2	0.21	0.09	9.02	0.0	0.0		
6,998.0	1.19	187.31	6,945.2	-450.8	-507.6	0.17	-0.04	-8.03	0.0	0.0		
7,092.0	1.41	179.12	7,039.1	-452.9	-507.7	0.31	0.23	-8.71	0.0	0.0		
7,187.0	1.50	177.96	7,134.1	-455.4	-507.6	0.10	0.09	-1.22	0.0	0.0		
7,281.0	1.88	173.91	7,228.1	-458.1	-507.4	0.42	0.40	-4.31	0.0	0.0		
7,375.0	2.07	177.76	7,322.0	-461.3	-507.2	0.25	0.20	4.10	0.0	0.0		
7,470.0	2.34	176.69	7,416.9	-465.0	-507.0	0.29	0.28	-1.13	0.0	0.0		
7,564.0	2.40	177.54	7,510.9	-468.9	-506.8	0.07	0.06	0.90	0.0	0.0		
7,658.0	2.46	176.57	7,604.8	-472.9	-506.6	0.08	0.06	-1.03	0.0	0.0		
7,751.0	2.54	172.76	7,697.7	-476.9	-506.2	0.20	0.09	-4.10	0.0	0.0		
7,846.0	0.86	228.13	7,792.6	-479.5	-506.5	2.28	-1.77	58.28	0.0	0.0		
7,940.0	0.92	248.73	7,886.6	-480.2	-507.7	0.34	0.06	21.91	0.0	0.0		

Company:	Midland	Local Co-ordinate Reference:	Well #733H
Project:	Eddy County, NM (NAD 83 NME)	TVD Reference:	KB = 32' @ 3320.0usft
Site:	Deep Elem 4 Fed Com	MD Reference:	KB = 32' @ 3320.0usft
Well:	#733H	North Reference:	Grid
Wellbore:	OH	Survey Calculation Method:	Minimum Curvature
Design:	OH	Database:	PEDM

Survey												
MD (usft)	Inc (°)	Azi (azimuth) (°)	TVD (usft)	N/S (usft)	E/W (usft)	DLeg (°/100usft)	Build (°/100usft)	Turn (°/100usft)	High to Plan (usft)	Right to Plan (usft)		
8,035.0	1.01	250.30	7,981.6	-480.8	-509.2	0.10	0.09	1.65	0.0	0.0		
8,129.0	0.43	327.82	8,075.6	-480.7	-510.2	1.07	-0.62	82.47	0.0	0.0		
8,223.0	0.21	284.41	8,169.6	-480.4	-510.5	0.33	-0.23	-46.18	0.0	0.0		
8,317.0	0.36	196.60	8,263.6	-480.6	-510.8	0.44	0.16	-93.41	0.0	0.0		
8,412.0	1.39	329.89	8,358.6	-479.9	-511.4	1.74	1.08	140.31	0.0	0.0		
8,506.0	1.92	309.60	8,452.6	-477.9	-513.2	0.83	0.56	-21.59	0.0	0.0		
8,601.0	1.97	298.06	8,547.5	-476.2	-515.9	0.41	0.05	-12.15	0.0	0.0		
8,695.0	1.31	274.88	8,641.5	-475.3	-518.4	0.98	-0.70	-24.66	0.0	0.0		
8,789.0	0.67	266.91	8,735.5	-475.2	-520.0	0.69	-0.68	-8.48	0.0	0.0		
8,978.0	0.41	15.11	8,924.4	-474.7	-520.9	0.47	-0.14	57.25	0.0	0.0		
9,073.0	0.59	319.81	9,019.4	-474.0	-521.2	0.52	0.19	-58.21	0.0	0.0		
9,167.0	0.72	283.22	9,113.4	-473.4	-522.0	0.46	0.14	-38.93	0.0	0.0		
9,262.0	0.38	299.47	9,208.4	-473.2	-522.9	0.39	-0.36	17.11	0.0	0.0		
9,356.0	0.65	12.20	9,302.4	-472.5	-523.1	0.69	0.29	77.37	0.0	0.0		
9,450.0	1.39	30.07	9,396.4	-471.0	-522.4	0.85	0.79	19.01	0.0	0.0		
9,545.0	1.75	30.65	9,491.4	-468.7	-521.1	0.38	0.38	0.61	0.0	0.0		
9,639.0	1.21	60.22	9,585.4	-467.0	-519.5	0.98	-0.57	31.46	0.0	0.0		
9,734.0	1.23	323.62	9,680.3	-465.7	-519.2	1.92	0.02	-101.68	0.0	0.0		
9,828.0	1.66	296.00	9,774.3	-464.3	-521.0	0.86	0.46	-29.38	0.0	0.0		
9,922.0	2.57	275.49	9,868.2	-463.5	-524.3	1.24	0.97	-21.82	0.0	0.0		
10,017.0	3.27	269.68	9,963.1	-463.3	-529.2	0.80	0.74	-6.12	0.0	0.0		
10,111.0	3.16	297.02	10,057.0	-462.1	-534.2	1.62	-0.12	29.09	0.0	0.0		
10,205.0	3.61	302.03	10,150.8	-459.4	-539.0	0.57	0.48	5.33	0.0	0.0		
10,300.0	3.51	294.31	10,245.6	-456.6	-544.2	0.52	-0.11	-8.13	0.0	0.0		
10,394.0	2.31	278.91	10,339.5	-455.1	-548.7	1.51	-1.28	-16.38	0.0	0.0		
10,488.0	1.87	243.53	10,433.5	-455.5	-551.9	1.42	-0.47	-37.64	0.0	0.0		
10,583.0	1.72	224.06	10,528.4	-457.2	-554.3	0.66	-0.16	-20.49	0.0	0.0		

Company: Midland
Project: Eddy County, NM (NAD 83 NME)
Site: Deep Elem 4 Fed Com
Well: #733H
Wellbore: OH
Design: OH

Local Co-ordinate Reference: Well #733H
TVD Reference: KB = 32' @ 3320.0usft
MD Reference: KB = 32' @ 3320.0usft
North Reference: Grid
Survey Calculation Method: Minimum Curvature
Database: PEDM

Survey											
MD (usft)	Inc (°)	Azi (azimuth) (°)	TVD (usft)	N/S (usft)	E/W (usft)	DLeg (°/100usft)	Build (°/100usft)	Turn (°/100usft)	High to Plan (usft)	Right to Plan (usft)	
10,677.0	1.52	217.22	10,622.4	-459.2	-556.0	0.30	-0.21	-7.28	0.0	0.0	
10,772.0	1.16	225.19	10,717.3	-460.9	-557.5	0.43	-0.38	8.39	0.0	0.0	
10,867.0	1.34	218.06	10,812.3	-462.5	-558.8	0.25	0.19	-7.51	0.0	0.0	
10,961.0	1.01	210.03	10,906.3	-464.0	-559.9	0.39	-0.35	-8.54	0.0	0.0	
11,055.0	1.09	194.53	11,000.3	-465.6	-560.6	0.31	0.09	-16.49	0.0	0.0	
11,180.0	1.32	180.42	11,125.3	-468.2	-560.9	0.30	0.18	-11.29	-0.3	0.3	
11,265.0	2.73	174.00	11,210.2	-471.2	-560.7	1.68	1.66	-7.55	-1.8	0.7	
KOP, MD:11265.0', TVD:11210.2',N/S:-471.2', E/W:-560.7', INC:2.73											
11,275.0	2.90	173.66	11,220.2	-471.7	-560.6	1.68	1.67	-3.43	-2.1	0.8	
11,369.0	16.54	189.04	11,312.6	-487.4	-562.5	14.64	14.51	16.36	-15.8	2.2	
11,464.0	22.02	181.35	11,402.3	-518.5	-565.0	6.35	5.77	-8.09	-35.7	-1.8	
11,558.0	35.98	170.87	11,484.3	-563.7	-561.0	15.75	14.85	-11.15	-51.0	-5.9	
11,588.5	37.93	172.89	11,508.7	-581.8	-558.4	7.54	6.41	6.62	-56.3	-2.0	
LL Crossing, MD:11588.5', TVD:11508.7',N/S:-581.8', E/W:-558.4', INC:37.93											
11,652.0	42.10	176.57	11,557.3	-622.5	-554.7	7.54	6.56	5.80	-63.3	4.7	
11,746.0	43.70	175.28	11,626.2	-686.3	-550.2	1.94	1.70	-1.37	-60.7	8.8	
11,841.0	52.17	171.67	11,689.8	-756.3	-542.0	9.35	8.92	-3.80	-45.4	16.6	
11,935.0	67.14	176.53	11,737.2	-836.7	-534.0	16.53	15.93	5.17	-28.2	26.4	
12,014.1	75.10	179.64	11,762.8	-911.4	-531.5	10.73	10.07	3.94	-14.7	28.6	
FTP Crossing, MD:12014.1', TVD:11762.8',N/S:-911.4', E/W:-531.5', INC:75.10											
12,029.0	76.61	180.20	11,766.4	-925.9	-531.5	10.73	10.10	3.74	-12.0	28.5	
12,124.0	80.80	180.86	11,785.0	-1,019.0	-532.4	4.46	4.41	0.69	6.3	26.6	
12,218.0	92.26	181.50	11,790.7	-1,112.7	-534.3	12.21	12.19	0.68	12.7	23.7	
12,313.0	91.70	181.86	11,787.4	-1,207.6	-537.1	0.70	-0.59	0.38	10.1	20.0	
12,407.0	91.25	181.53	11,785.0	-1,301.5	-539.9	0.59	-0.48	-0.35	8.4	16.3	
12,502.0	92.17	181.92	11,782.1	-1,396.4	-542.7	1.05	0.97	0.41	6.2	12.5	
12,596.0	87.58	180.83	11,782.3	-1,490.4	-545.0	5.02	-4.88	-1.16	7.1	9.3	

Company:	Midland	Local Co-ordinate Reference:	Well #733H
Project:	Eddy County, NM (NAD 83 NME)	TVD Reference:	KB = 32' @ 3320.0usft
Site:	Deep Elem 4 Fed Com	MD Reference:	KB = 32' @ 3320.0usft
Well:	#733H	North Reference:	Grid
Wellbore:	OH	Survey Calculation Method:	Minimum Curvature
Design:	OH	Database:	PEDM

Survey												
MD (usft)	Inc (°)	Azi (azimuth) (°)	TVD (usft)	N/S (usft)	E/W (usft)	DLeg (°/100usft)	Build (°/100usft)	Turn (°/100usft)	High to Plan (usft)	Right to Plan (usft)		
12,691.0	86.57	180.55	11,787.2	-1,585.2	-546.1	1.10	-1.06	-0.29	12.7	7.2		
12,785.0	88.50	180.47	11,791.2	-1,679.1	-547.0	2.05	2.05	-0.09	17.4	5.5		
12,880.0	87.97	180.34	11,794.2	-1,774.1	-547.6	0.57	-0.56	-0.14	21.0	3.8		
12,975.0	90.13	178.78	11,795.7	-1,869.1	-546.9	2.80	2.27	-1.64	23.3	3.6		
13,069.0	90.04	178.88	11,795.6	-1,963.0	-545.0	0.14	-0.10	0.11	23.8	4.6		
13,163.0	92.48	177.73	11,793.5	-2,057.0	-542.2	2.87	2.60	-1.22	22.5	6.5		
13,258.0	92.34	177.57	11,789.5	-2,151.8	-538.3	0.22	-0.15	-0.17	19.2	9.4		
13,352.0	91.72	177.25	11,786.2	-2,245.7	-534.1	0.74	-0.66	-0.34	16.5	12.7		
13,447.0	92.70	176.66	11,782.5	-2,340.4	-529.0	1.20	1.03	-0.62	13.6	16.8		
13,541.0	91.86	177.98	11,778.8	-2,434.3	-524.6	1.66	-0.89	1.40	10.5	20.3		
13,636.0	91.25	178.70	11,776.2	-2,529.2	-521.9	0.99	-0.64	0.76	8.5	22.4		
13,730.0	92.23	181.42	11,773.4	-2,623.1	-522.0	3.07	1.04	2.89	6.1	21.9		
13,825.0	89.57	181.46	11,771.9	-2,718.1	-524.4	2.80	-2.80	0.04	5.0	19.1		
13,919.0	89.65	181.82	11,772.5	-2,812.0	-527.1	0.39	0.09	0.38	6.1	16.1		
14,014.0	88.81	181.60	11,773.8	-2,907.0	-529.9	0.91	-0.88	-0.23	7.9	12.8		
14,108.0	88.59	181.82	11,775.9	-3,000.9	-532.7	0.33	-0.23	0.23	10.4	9.7		
14,203.0	88.28	181.66	11,778.5	-3,095.8	-535.6	0.37	-0.33	-0.17	13.5	6.4		
14,314.0	88.87	180.57	11,781.3	-3,206.8	-537.7	1.12	0.53	-0.98	16.7	3.8		
14,409.0	89.59	180.73	11,782.6	-3,301.8	-538.8	0.78	0.76	0.17	18.5	2.3		
14,503.0	91.47	180.69	11,781.7	-3,395.8	-540.0	2.00	2.00	-0.04	18.0	0.8		
14,598.0	90.99	180.56	11,779.7	-3,490.7	-541.0	0.52	-0.51	-0.14	16.5	-0.6		
14,692.0	90.97	180.20	11,778.0	-3,584.7	-541.6	0.38	-0.02	-0.38	15.3	-1.6		
14,786.0	90.80	180.33	11,776.6	-3,678.7	-542.1	0.23	-0.18	0.14	14.3	-2.4		
14,881.0	90.74	180.50	11,775.3	-3,773.7	-542.8	0.19	-0.06	0.18	13.5	-3.5		
14,975.0	89.82	180.55	11,774.9	-3,867.7	-543.6	0.98	-0.98	0.05	13.4	-4.7		
15,069.0	89.09	180.28	11,775.8	-3,961.7	-544.3	0.83	-0.78	-0.29	14.8	-5.8		
15,163.0	91.00	180.29	11,775.7	-4,055.7	-544.8	2.03	2.03	0.01	15.1	-6.6		

Company:	Midland	Local Co-ordinate Reference:	Well #733H
Project:	Eddy County, NM (NAD 83 NME)	TVD Reference:	KB = 32' @ 3320.0usft
Site:	Deep Elem 4 Fed Com	MD Reference:	KB = 32' @ 3320.0usft
Well:	#733H	North Reference:	Grid
Wellbore:	OH	Survey Calculation Method:	Minimum Curvature
Design:	OH	Database:	PEDM

Survey												
MD (usft)	Inc (°)	Azi (azimuth) (°)	TVD (usft)	N/S (usft)	E/W (usft)	DLeg (°/100usft)	Build (°/100usft)	Turn (°/100usft)	High to Plan (usft)	Right to Plan (usft)		
15,257.0	90.27	180.01	11,774.6	-4,149.7	-545.0	0.83	-0.78	-0.30	14.5	-7.3		
15,351.0	89.48	179.62	11,774.8	-4,243.7	-544.7	0.94	-0.84	-0.41	15.2	-7.3		
15,445.0	92.17	180.96	11,773.5	-4,337.6	-545.2	3.20	2.86	1.43	14.3	-8.2		
15,540.0	94.03	182.31	11,768.3	-4,432.5	-547.9	2.42	1.96	1.42	9.6	-11.3		
15,634.0	91.67	181.44	11,763.7	-4,526.3	-551.0	2.68	-2.51	-0.93	5.4	-14.7		
15,727.0	92.00	181.41	11,760.7	-4,619.2	-553.3	0.36	0.35	-0.03	2.8	-17.4		
15,822.0	89.43	180.69	11,759.5	-4,714.2	-555.0	2.81	-2.71	-0.76	2.1	-19.5		
15,916.0	88.70	180.51	11,761.0	-4,808.2	-556.0	0.80	-0.78	-0.19	4.0	-20.9		
16,011.0	88.19	180.47	11,763.6	-4,903.1	-556.8	0.54	-0.54	-0.04	7.1	-22.1		
16,106.0	90.55	181.25	11,764.7	-4,998.1	-558.3	2.62	2.48	0.82	8.6	-22.3		
16,200.0	89.62	180.67	11,764.5	-5,092.1	-559.8	1.17	-0.99	-0.62	8.9	-21.9		
16,294.0	89.15	181.55	11,765.5	-5,186.1	-561.6	1.06	-0.50	0.94	10.4	-21.8		
16,389.0	88.95	180.73	11,767.1	-5,281.0	-563.5	0.89	-0.21	-0.86	12.4	-21.8		
16,483.0	90.21	180.26	11,767.8	-5,375.0	-564.3	1.43	1.34	-0.50	13.6	-20.7		
16,577.0	92.01	178.67	11,766.0	-5,469.0	-563.5	2.55	1.91	-1.69	12.2	-18.0		
16,672.0	89.54	177.29	11,764.7	-5,563.9	-560.1	2.98	-2.60	-1.45	11.4	-12.7		
16,766.0	91.39	178.40	11,763.9	-5,657.8	-556.6	2.30	1.97	1.18	11.1	-7.2		
16,860.0	90.60	177.37	11,762.3	-5,751.8	-553.1	1.38	-0.84	-1.10	9.9	-1.9		
16,955.0	90.07	181.55	11,761.7	-5,846.7	-552.2	4.44	-0.56	4.40	9.8	0.9		
17,049.0	88.47	182.02	11,762.9	-5,940.7	-555.2	1.77	-1.70	0.50	11.5	-0.1		
17,143.0	88.02	181.47	11,765.8	-6,034.6	-558.0	0.76	-0.48	-0.59	14.8	-1.1		
17,238.0	88.73	180.89	11,768.5	-6,129.5	-560.0	0.96	0.75	-0.61	18.0	-1.1		
17,332.0	89.09	181.03	11,770.3	-6,223.5	-561.5	0.41	0.38	0.15	20.3	-1.5		
17,427.0	90.01	181.08	11,771.1	-6,318.5	-563.3	0.97	0.97	0.05	21.5	-4.9		
17,521.0	90.13	180.91	11,770.9	-6,412.5	-564.9	0.22	0.13	-0.18	21.8	-9.4		
17,616.0	90.74	179.28	11,770.2	-6,507.5	-565.1	1.83	0.64	-1.72	21.5	-12.4		
17,710.0	91.50	178.74	11,768.4	-6,601.4	-563.5	0.99	0.81	-0.57	20.1	-13.7		

Company:	Midland	Local Co-ordinate Reference:	Well #733H
Project:	Eddy County, NM (NAD 83 NME)	TVD Reference:	KB = 32' @ 3320.0usft
Site:	Deep Elem 4 Fed Com	MD Reference:	KB = 32' @ 3320.0usft
Well:	#733H	North Reference:	Grid
Wellbore:	OH	Survey Calculation Method:	Minimum Curvature
Design:	OH	Database:	PEDM

Survey											
MD (usft)	Inc (°)	Azi (azimuth) (°)	TVD (usft)	N/S (usft)	E/W (usft)	DLeg (°/100usft)	Build (°/100usft)	Turn (°/100usft)	High to Plan (usft)	Right to Plan (usft)	
17,804.0	90.94	178.40	11,766.4	-6,695.4	-561.1	0.70	-0.60	-0.36	18.6	-14.2	
17,899.0	91.42	178.43	11,764.4	-6,790.3	-558.5	0.51	0.51	0.03	17.1	-14.4	
17,993.0	90.66	178.49	11,762.7	-6,884.3	-556.0	0.81	-0.81	0.06	15.8	-14.8	
18,087.0	90.60	178.63	11,761.7	-6,978.2	-553.6	0.16	-0.06	0.15	15.3	-15.2	
18,182.0	90.10	178.49	11,761.1	-7,073.2	-551.2	0.55	-0.53	-0.15	15.1	-15.7	
18,275.0	89.82	178.41	11,761.2	-7,166.2	-548.7	0.31	-0.30	-0.09	15.6	-16.0	
18,370.0	87.72	177.74	11,763.2	-7,261.1	-545.5	2.32	-2.21	-0.71	18.1	-15.7	
18,464.0	87.52	178.44	11,767.1	-7,354.9	-542.4	0.77	-0.21	0.74	22.5	-15.5	
18,558.0	90.43	178.68	11,768.8	-7,448.9	-540.0	3.11	3.10	0.26	24.6	-15.7	
18,652.0	91.02	178.54	11,767.6	-7,542.9	-537.7	0.65	0.63	-0.15	23.8	-14.0	
18,746.0	89.96	178.28	11,766.8	-7,636.8	-535.1	1.16	-1.13	-0.28	23.3	-11.8	
18,840.0	91.22	177.87	11,765.8	-7,730.8	-532.0	1.41	1.34	-0.44	22.7	-9.0	
18,934.0	90.85	177.37	11,764.1	-7,824.7	-528.1	0.66	-0.39	-0.53	21.3	-5.5	
19,029.0	90.01	177.82	11,763.4	-7,919.6	-524.1	1.00	-0.88	0.47	21.0	-1.9	
19,123.0	89.62	177.86	11,763.7	-8,013.5	-520.5	0.42	-0.41	0.04	21.6	1.3	
19,218.0	89.45	178.77	11,764.5	-8,108.5	-517.7	0.97	-0.18	0.96	22.7	3.7	
19,312.0	90.63	179.59	11,764.4	-8,202.4	-516.4	1.53	1.26	0.87	23.0	4.6	
19,434.0	91.58	180.13	11,762.1	-8,324.4	-516.1	0.90	0.78	0.44	21.0	4.4	
19,500.0	91.81	180.34	11,760.1	-8,390.4	-516.4	0.47	0.35	0.32	19.3	3.9	
19,595.0	90.83	180.10	11,757.9	-8,485.4	-516.7	1.06	-1.03	-0.25	17.5	3.2	
19,689.0	89.99	180.38	11,757.3	-8,579.4	-517.1	0.94	-0.89	0.30	17.1	2.4	
19,783.0	88.81	179.10	11,758.2	-8,673.3	-516.7	1.85	-1.26	-1.36	18.4	2.4	
19,877.0	90.21	178.74	11,759.0	-8,767.3	-514.9	1.54	1.49	-0.38	19.6	3.8	
19,971.0	91.05	179.57	11,758.0	-8,861.3	-513.5	1.26	0.89	0.88	18.9	4.8	
20,066.0	91.44	179.95	11,755.9	-8,956.3	-513.1	0.57	0.41	0.40	17.1	4.8	
20,160.0	90.86	180.53	11,754.1	-9,050.3	-513.5	0.87	-0.62	0.62	15.6	4.0	
20,254.0	90.21	180.92	11,753.2	-9,144.2	-514.7	0.81	-0.69	0.41	15.0	2.5	

Company: Midland
Project: Eddy County, NM (NAD 83 NME)
Site: Deep Elem 4 Fed Com
Well: #733H
Wellbore: OH
Design: OH

Local Co-ordinate Reference: Well #733H
TVD Reference: KB = 32' @ 3320.0usft
MD Reference: KB = 32' @ 3320.0usft
North Reference: Grid
Survey Calculation Method: Minimum Curvature
Database: PEDM

MD (usft)	Inc (°)	Azi (azimuth) (°)	TVD (usft)	N/S (usft)	E/W (usft)	DLeg (°/100usft)	Build (°/100usft)	Turn (°/100usft)	High to Plan (usft)	Right to Plan (usft)
20,349.0	89.68	181.44	11,753.3	-9,239.2	-516.7	0.78	-0.56	0.55	15.5	0.1
20,442.0	88.11	180.92	11,755.1	-9,332.2	-518.6	1.78	-1.69	-0.56	17.6	-2.2
20,537.0	88.45	180.65	11,757.9	-9,427.1	-519.9	0.46	0.36	-0.28	20.8	-3.9
20,631.0	89.03	180.63	11,760.0	-9,521.1	-521.0	0.62	0.62	-0.02	23.2	-5.3
20,725.0	90.66	180.75	11,760.2	-9,615.1	-522.1	1.74	1.73	0.13	23.7	-6.8
20,819.0	91.78	181.85	11,758.2	-9,709.0	-524.2	1.67	1.19	1.17	22.1	-9.3
20,913.0	91.70	180.59	11,755.4	-9,803.0	-526.2	1.34	-0.09	-1.34	19.5	-11.7
21,008.0	91.86	180.75	11,752.4	-9,897.9	-527.3	0.24	0.17	0.17	16.9	-13.2
21,101.0	92.10	180.76	11,749.2	-9,990.9	-528.6	0.26	0.26	0.01	14.0	-14.8
21,195.0	91.58	180.20	11,746.2	-10,084.8	-529.3	0.81	-0.55	-0.60	11.4	-16.0
21,290.0	90.10	180.03	11,744.8	-10,179.8	-529.5	1.57	-1.56	-0.18	10.3	-16.6
21,384.0	92.00	179.84	11,743.1	-10,273.8	-529.4	2.03	2.02	-0.20	8.9	-16.9
21,478.0	90.91	179.59	11,740.7	-10,367.7	-529.0	1.19	-1.16	-0.27	6.8	-16.8
Last MWD Survey (MD=21478.0')										
21,627.0	90.91	179.59	11,738.3	-10,516.7	-527.9	0.00	0.00	0.00	5.0	-16.3
Projection to Bit (MD=21627.0')										

Measured Depth (usft)	Vertical Depth (usft)	Local Coordinates		Comment
		+N/-S (usft)	+E/-W (usft)	
11,265.0	11,210.2	-471.2	-560.7	KOP, MD:11265.0', TVD:11210.2',N/S:-471.2', E/W:-560.7', INC:2.73
11,588.5	11,508.7	-581.8	-558.4	LL Crossing, MD:11588.5', TVD:11508.7',N/S:-581.8', E/W:-558.4', INC:37.93
12,014.1	11,762.8	-911.4	-531.5	FTP Crossing, MD:12014.1', TVD:11762.8',N/S:-911.4', E/W:-531.5', INC:75.10
21,478.0	11,740.7	-10,367.7	-529.0	Last MWD Survey (MD=21478.0')
21,627.0	11,738.3	-10,516.7	-527.9	Projection to Bit (MD=21627.0')

I CERTIFY THIS SURVEY TO BE TRUE AND CORRECT TO THE BEST OF MY BELIEF AND KNOWLEDGE KAY MADDOX 11/10/2022

Checked By: _____ Approved By: _____ Date: _____



Eddy County, NM (NAD 83 NME)
Deep Elem 4 Fed Com #733H
Plan #2

PROJECT DETAILS: Eddy County, NM (NAD 83 NME)
 Geodetic System: US State Plane 1983
 Datum: North American Datum 1983
 Ellipsoid: GRS 1980
 Zone: New Mexico Eastern Zone
 System Datum: Mean Sea Level

WELL DETAILS: #733H
 KB = 32' @ 3320.0usft
 Northing 388295.00 Easting 709975.00 Latitude 32° 3' 58.800 N Longitude 103° 47' 20.154 W



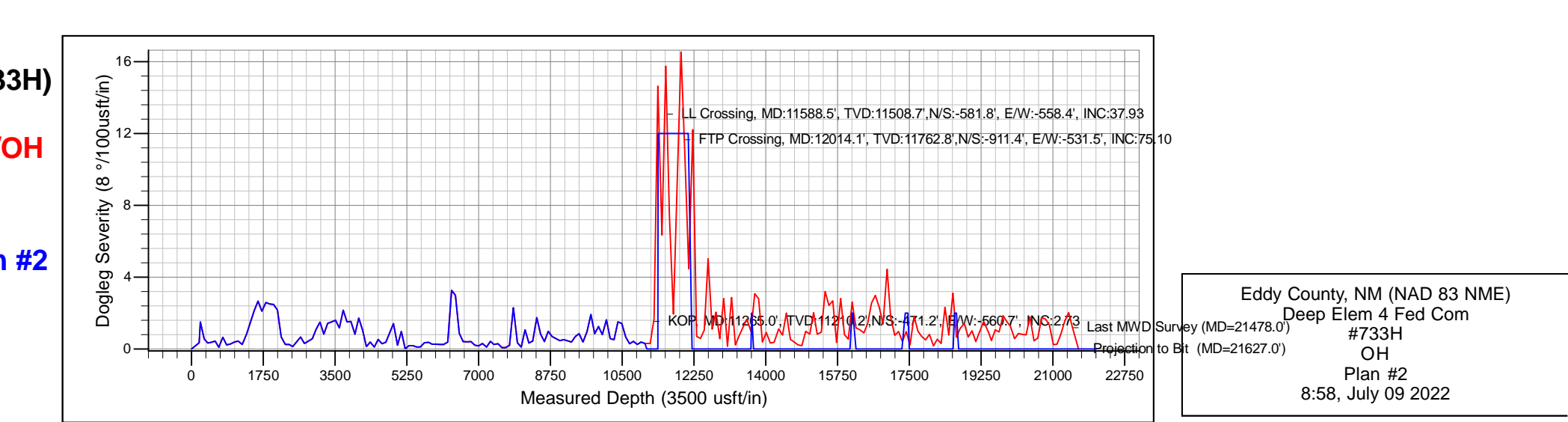
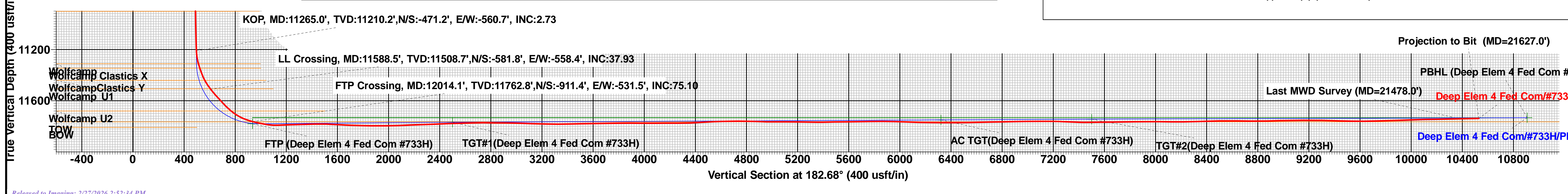
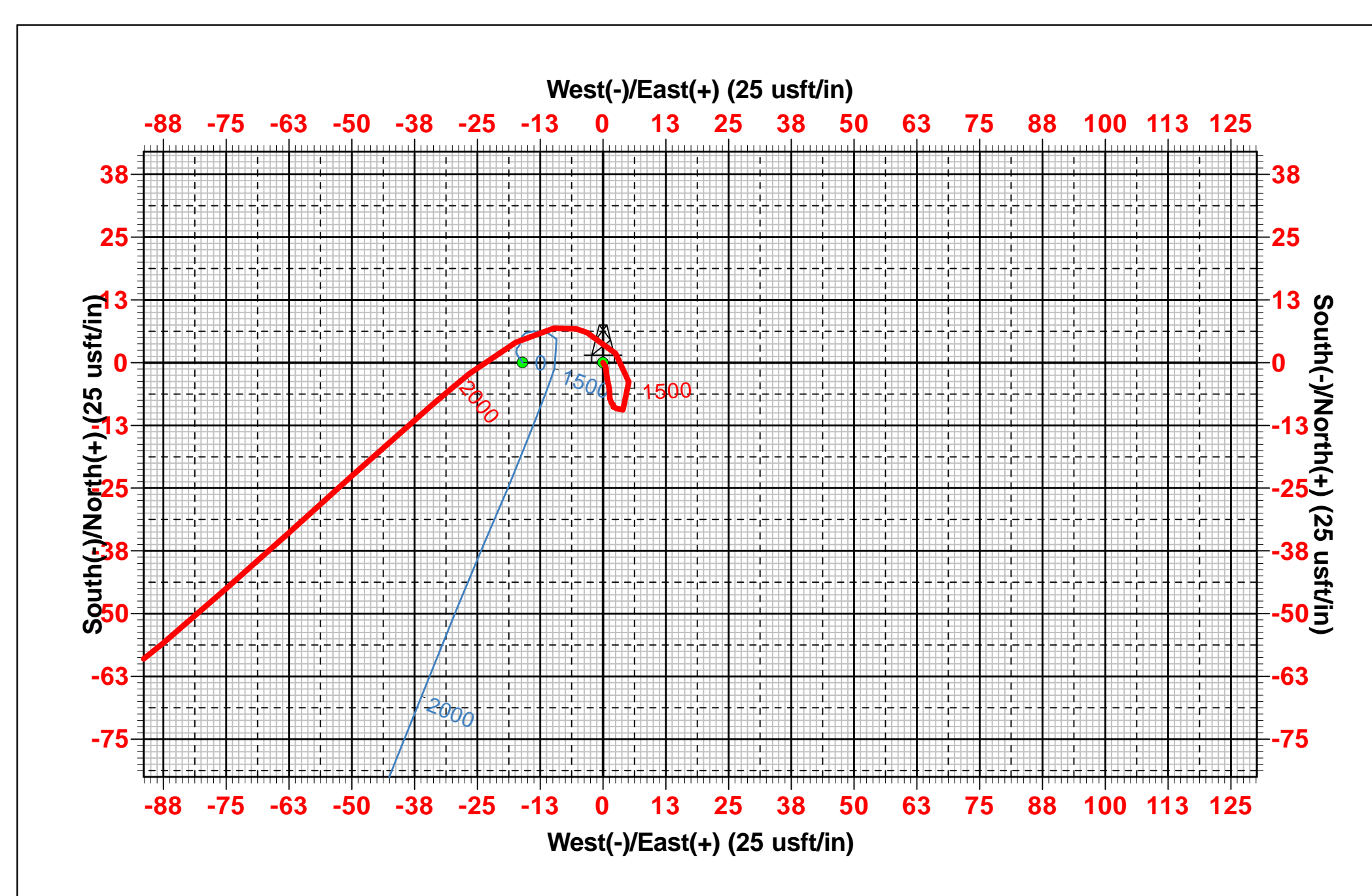
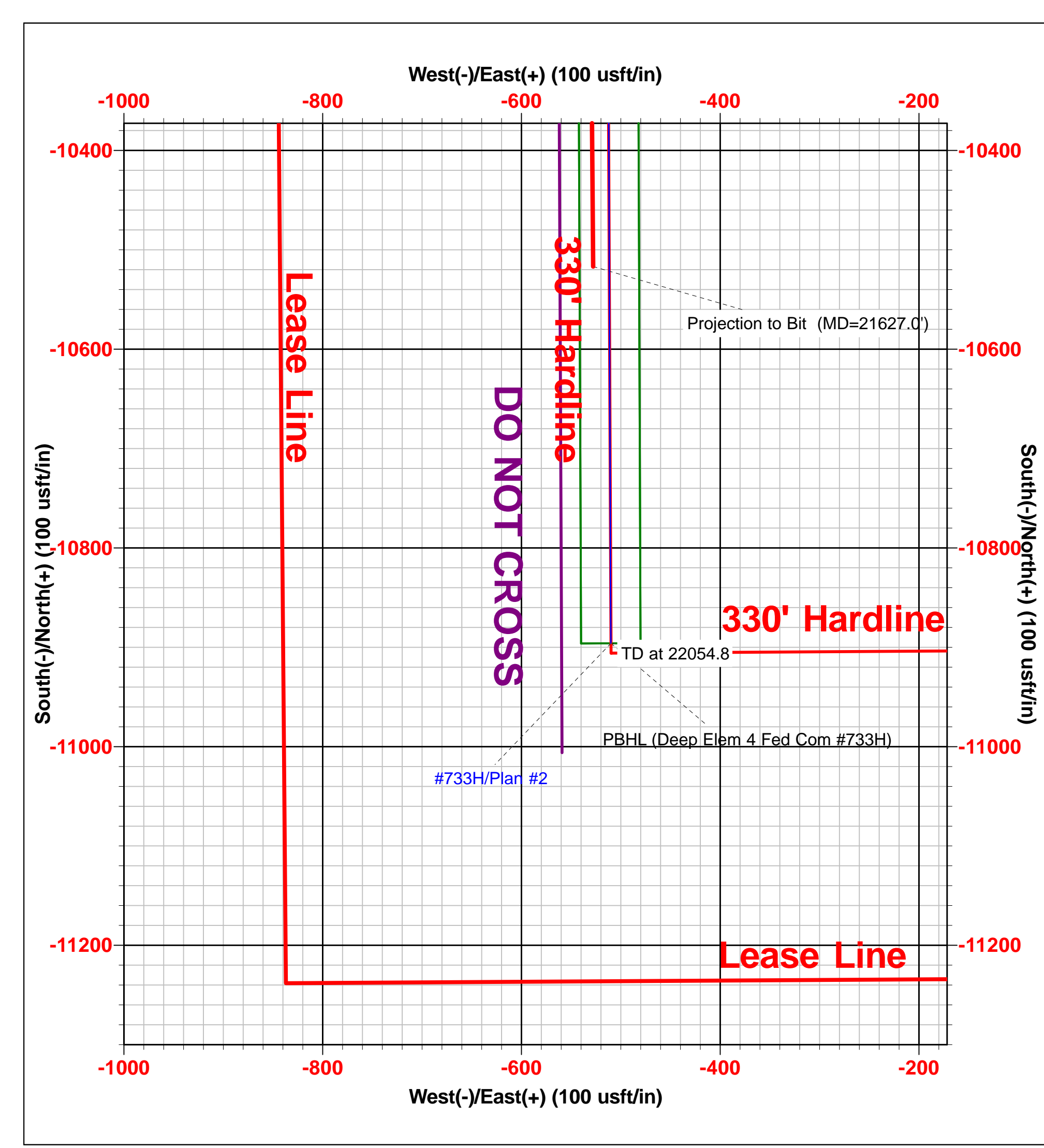
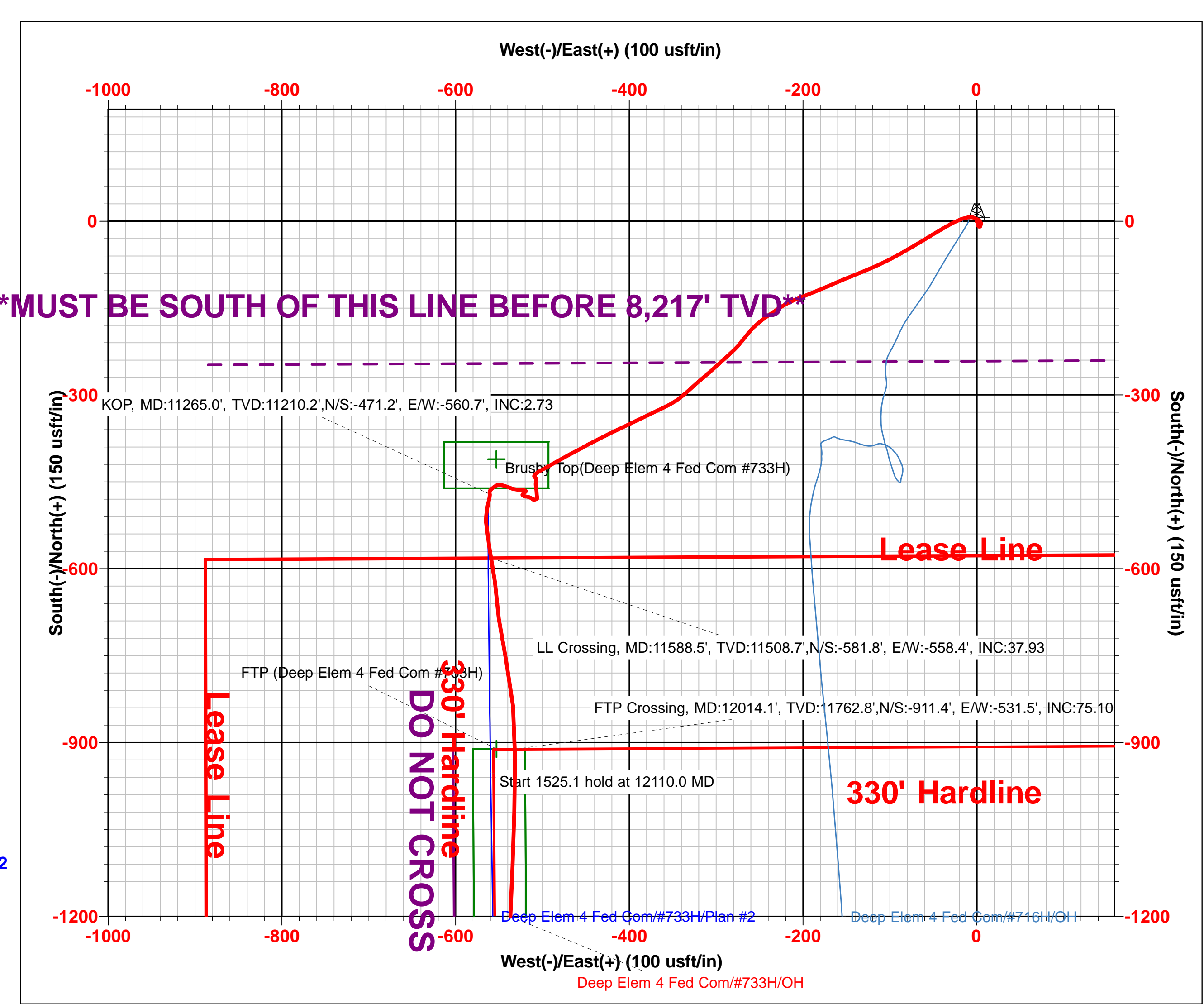
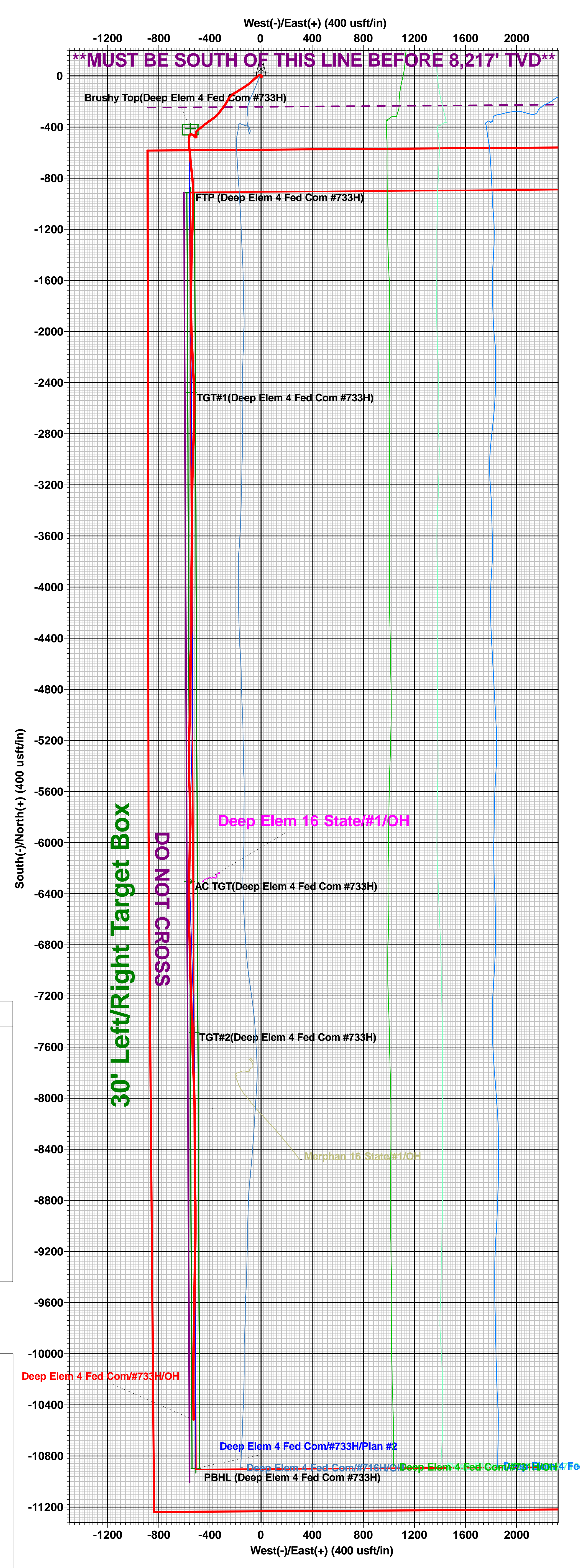
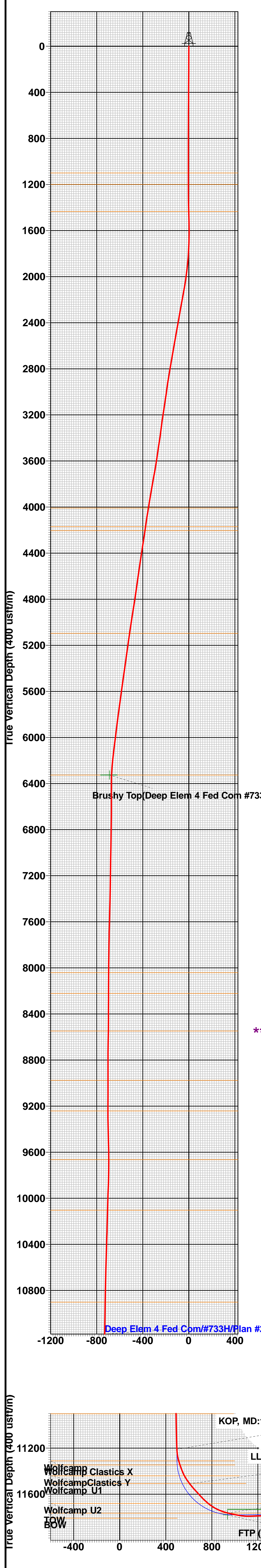
To convert a Magnetic Direction to a Grid Direction, Add 6.23°
 To convert a Magnetic Direction to a True Direction, Add 6.52° East
 To convert a True Direction to a Grid Direction, Subtract 0.29°

SECTION DETAILS

Sec	MD	Inc	Azi	TVD	+N/-S	+E/-W	Dleg	TFace	Vsect	Target
1	11055.0	1.09	194.53	11000.3	-465.6	-560.6	0.00	0.00	491.3	
2	11118.0	1.09	194.53	11063.3	-466.8	-560.9	0.00	0.00	492.5	
3	11365.3	1.09	194.53	11310.5	-471.3	-562.0	0.00	0.00	497.1	
4	12110.0	90.42	179.43	11779.2	-952.2	-559.6	12.00	-15.10	977.3	
5	13635.1	90.42	179.43	11768.0	-2477.2	-544.5	0.00	0.00	2500.0	TGT#1(Deep Elem 4 Fed Com #733H)
6	13653.5	90.27	179.77	11767.9	-2495.6	-544.4	2.00	113.97	2518.4	
7	16053.5	90.27	179.77	11756.6	-4895.6	-534.8	0.00	0.00	4915.2	
8	16123.0	90.28	181.16	11756.2	-4965.0	-535.3	2.00	89.50	4984.6	
9	17318.5	90.28	181.16	11750.4	-6160.3	-559.5	0.00	0.00	6179.8	
10	17461.0	90.28	178.31	11749.7	-6302.8	-558.8	2.00	-90.04	6322.0	AC TGT(Deep Elem 4 Fed Com #733H)
11	17463.4	90.27	178.26	11749.6	-6305.2	-558.8	2.00	-96.88	6324.4	
12	18567.3	90.27	178.26	11744.4	-7408.6	-525.3	0.00	0.00	7425.0	
13	18642.5	90.28	179.77	11744.0	-7483.7	-524.0	2.00	89.78	7500.9	TGT#2(Deep Elem 4 Fed Com #733H)
14	18646.4	90.20	179.77	11744.0	-7487.6	-524.0	2.00	180.00	7503.9	
15	22054.8	90.20	179.77	11732.0	-10896.0	-510.0	0.00	0.00	10907.9	PBHL (Deep Elem 4 Fed Com #733H)

DESIGN TARGET DETAILS

Name	TVD	+N/-S	+E/-W	Northing	Easting
Brushy Top(Deep Elem 4 Fed Com #733H)	6326.0	-411.0	-553.0	387884.00	709422.00
PBHL (Deep Elem 4 Fed Com #733H)	11732.0	-10896.0	-510.0	377399.00	709465.00
TGT#2(Deep Elem 4 Fed Com #733H)	11744.0	-7483.7	-524.0	380811.30	709451.01
AC TGT(Deep Elem 4 Fed Com #733H)	11749.7	-6302.8	-558.8	381992.24	709416.16
TGT#1(Deep Elem 4 Fed Com #733H)	11768.0	-2477.2	-544.5	385817.80	709430.47
FTP (Deep Elem 4 Fed Com #733H)	11780.0	-911.0	-553.0	387384.00	709422.00



Intent As Drilled

API #									
Operator Name:					Property Name:				Well Number

Kick Off Point (KOP)

UL	Section	Township	Range	Lot	Feet	From N/S	Feet	From E/W	County
Latitude					Longitude				NAD

First Take Point (FTP)

UL	Section	Township	Range	Lot	Feet	From N/S	Feet	From E/W	County
Latitude					Longitude				NAD

Last Take Point (LTP)

UL	Section	Township	Range	Lot	Feet	From N/S	Feet	From E/W	County
Latitude					Longitude				NAD

Is this well the defining well for the Horizontal Spacing Unit?

Is this well an infill well?

If infill is yes please provide API if available, Operator Name and well number for Defining well for Horizontal Spacing Unit.

API #									
Operator Name:					Property Name:				Well Number

KZ 06/29/2018

Submit To Appropriate District Office Two Copies District I 1625 N. French Dr., Hobbs, NM 88240 District II 811 S. First St., Artesia, NM 88210 District III 1000 Rio Brazos Rd., Aztec, NM 87410 District IV 1220 S. St. Francis Dr., Santa Fe, NM 87505	State of New Mexico Energy, Minerals and Natural Resources Oil Conservation Division 1220 South St. Francis Dr. Santa Fe, NM 87505	Form C-105 Revised August 1, 2011
		1. WELL API NO. 30-015-48259
		2. Type of Lease <input type="checkbox"/> STATE <input type="checkbox"/> FEE <input checked="" type="checkbox"/> FED/INDIAN
		3. State Oil & Gas Lease No.

WELL COMPLETION OR RECOMPLETION REPORT AND LOG

4. Reason for filing: <input checked="" type="checkbox"/> COMPLETION REPORT (Fill in boxes #1 through #31 for State and Fee wells only) <input type="checkbox"/> C-144 CLOSURE ATTACHMENT (Fill in boxes #1 through #9, #15 Date Rig Released and #32 and/or #33; attach this and the plat to the C-144 closure report in accordance with 19.15.17.13.K NMAC)	5. Lease Name or Unit Agreement Name DEEP ELEM 4 FEDERAL COM 6. Well Number: 733H
---	--

7. Type of Completion:
 NEW WELL WORKOVER DEEPENING PLUGBACK DIFFERENT RESERVOIR OTHER

8. Name of Operator EOG RESOURCES INC	9. OGRID 7377
---	-------------------------

10. Address of Operator PO BOX 2267 MIDLAND, TEXAS 79702	11. Pool name or Wildcat PURPLE SAGE; WOLFCAMP (GAS)
--	--

12. Location	Unit Ltr	Section	Township	Range	Lot	Feet from the	N/S Line	Feet from the	E/W Line	County
Surface:	M	4	26S	31E		577	SOUTH	886	WEST	EDDY
BH:	M	16	26S	31E		719	SOUTH	315	WEST	EDDY

13. Date Spudded 04/26/2022	14. Date T.D. Reached 06/28/2022	15. Date Rig Released 06/28/2022	16. Date Completed (Ready to Produce) 10/15/2022	17. Elevations (DF and RKB, RT, GR, etc.) 3290' GL
---------------------------------------	--	--	--	--

18. Total Measured Depth of Well MD 21,627' TVD 11,738'	19. Plug Back Measured Depth MD 21,599' TVD 11,738'	20. Was Directional Survey Made? YES	21. Type Electric and Other Logs Run None
---	---	--	---

22. Producing Interval(s), of this completion - Top, Bottom, Name
WOLFCAMP 12,034 - 21,599'

23. CASING RECORD (Report all strings set in well)

CASING SIZE	WEIGHT LB./FT.	DEPTH SET	HOLE SIZE	CEMENTING RECORD	AMOUNT PULLED
10 3/4"	40.5#	1305'	13 1/2"	550 CL C/CIRC	
8 3/4"	38.5#	11,103'	9 7/8"	1491 CL C&H/CIRC	
6"	24.5#	21,606'	7 7/8"	1760 CL H TOC 2430' CBL	

24. LINER RECORD				25. TUBING RECORD			
SIZE	TOP	BOTTOM	SACKS CEMENT	SCREEN	SIZE	DEPTH SET	PACKER SET

26. Perforation record (interval, size, and number) 12,034 - 21,599' 3 1/8", 2040 holes	27. ACID, SHOT, FRACTURE, CEMENT, SQUEEZE, ETC. DEPTH INTERVAL AMOUNT AND KIND MATERIAL USED 12,034 - 21,599' FRAC W 24,111,299 lbs proppant, 410,236 bbls load fld
---	--

28. PRODUCTION

Date First Production 10/15/2022	Production Method (<i>Flowing, gas lift, pumping - Size and type pump</i>) Flowing	Well Status (<i>Prod. or Shut-in</i>) Producing
--	--	---

Date of Test	Hours Tested	Choke Size	Prod'n For Test Period	Oil - Bbl	Gas - MCF	Water - Bbl.	Gas - Oil Ratio
10/23/2022	24	91		4081	19,452	7267	4767

Flow Tubing Press.	Casing Pressure	Calculated 24-Hour Rate	Oil - Bbl.	Gas - MCF	Water - Bbl.	Oil Gravity - API - (<i>Corr.</i>)
	3215					46

29. Disposition of Gas (<i>Sold, used for fuel, vented, etc.</i>) SOLD	30. Test Witnessed By
--	-----------------------

31. List Attachments
C-102, C-104, C-103, Directional Survey, H spacing

32. If a temporary pit was used at the well, attach a plat with the location of the temporary pit.

33. If an on-site burial was used at the well, report the exact location of the on-site burial:

Latitude _____ Longitude _____ NAD 1927 1983

I hereby certify that the information shown on both sides of this form is true and complete to the best of my knowledge and belief

Printed

Signature Kay Maddox	Name Kay Maddox	Title Senior Regulatory Specialist	Date 11/01/2022
-----------------------------	------------------------	---	------------------------

E-mail Address **kay_maddox@eogresources.com**

INSTRUCTIONS

This form is to be filed with the appropriate District Office of the Division not later than 20 days after the completion of any newly-drilled or deepened well and not later than 60 days after completion of closure. When submitted as a completion report, this shall be accompanied by one copy of all electrical and radio-activity logs run on the well and a summary of all special tests conducted, including drill stem tests. All depths reported shall be measured depths. In the case of directionally drilled wells, true vertical depths shall also be reported. For multiple completions, items 11, 12 and 26-31 shall be reported for each zone.

INDICATE FORMATION TOPS IN CONFORMANCE WITH GEOGRAPHICAL SECTION OF STATE

Southeastern New Mexico		Northwestern New Mexico	
T. Anhy <u>Rustler</u> 1100'	T. Canyon <u>Brushy</u> 6326'	T. Ojo Alamo	T. Penn A"
T. Salt 1435'	T. Strawn	T. Kirtland	T. Penn. "B"
B. Salt 4009'	T. Atoka	T. Fruitland	T. Penn. "C"
T. Yates	T. Miss	T. Pictured Cliffs	T. Penn. "D"
T. 7 Rivers	T. Devonian	T. Cliff House	T. Leadville
T. Queen	T. Silurian	T. Menefee	T. Madison
T. Grayburg	T. Montoya	T. Point Lookout	T. Elbert
T. San Andres	T. Simpson	T. Mancos	T. McCracken
T. Glorieta	T. McKee	T. Gallup	T. Ignacio Otzte
T. Paddock	T. Ellenburger	Base Greenhorn	T. Granite
T. Blinebry	T. Gr. Wash	T. Dakota	
T. Tubb	T. Delaware Sand	T. Morrison	
T. Drinkard	T. Bone Springs	T. Todilto	
T. Abo	T. 1st BS Sand 8976'	T. Entrada	
T. Wolfcamp 11,311'	T. 2nd BS Sand 9665'	T. Wingate	
T. Penn	T. 3rd BS Sand 10,902'	T. Chinle	
T. Cisco (Bough C)	T.	T. Permian	

OIL OR GAS SANDS OR ZONES

No. 1, from.....to.....
 No. 2, from.....to.....
 No. 3, from.....to.....
 No. 4, from.....to.....

IMPORTANT WATER SANDS

Include data on rate of water inflow and elevation to which water rose in hole.

No. 1, from.....to.....feet.....
 No. 2, from.....to.....feet.....
 No. 3, from.....to.....feet.....

LITHOLOGY RECORD (Attach additional sheet if necessary)

From	To	Thickness In Feet	Lithology	From	To	Thickness In Feet	Lithology

Sante Fe Main Office
Phone: (505) 476-3441

General Information
Phone: (505) 629-6116

Online Phone Directory
<https://www.emnrd.nm.gov/ocd/contact-us>

State of New Mexico
Energy, Minerals and Natural Resources
Oil Conservation Division
1220 S. St Francis Dr.
Santa Fe, NM 87505

ACKNOWLEDGMENTS

Action 155403

ACKNOWLEDGMENTS

Operator: EOG RESOURCES INC 5509 Champions Drive Midland, TX 79706	OGRID: 7377
	Action Number: 155403
	Action Type: [C-104] Completion Packet (C-104C)

ACKNOWLEDGMENTS

<input checked="" type="checkbox"/>	I hereby certify that the required Water Use Report has been, or will be, submitted for this wells completion.
<input checked="" type="checkbox"/>	I hereby certify that the required FracFocus disclosure has been, or will be, submitted for this wells completion.

Sante Fe Main Office
Phone: (505) 476-3441

General Information
Phone: (505) 629-6116

Online Phone Directory
<https://www.emnrd.nm.gov/ocd/contact-us>

State of New Mexico
Energy, Minerals and Natural Resources
Oil Conservation Division
1220 S. St Francis Dr.
Santa Fe, NM 87505

CONDITIONS

Action 155403

CONDITIONS

Operator: EOG RESOURCES INC 5509 Champions Drive Midland, TX 79706	OGRID: 7377
	Action Number: 155403
	Action Type: [C-104] Completion Packet (C-104C)

CONDITIONS

Created By	Condition	Condition Date
plmartinez	None	2/27/2026