

Submit a Copy To Appropriate District
Office
District I - (575) 393-6161
1625 N. French Dr., Hobbs, NM 88240
District II - (575) 748-1283
811 S. First St., Artesia, NM 88210
District III - (505) 334-6178
1000 Rio Brazos Rd., Aztec, NM 87410
District IV - (505) 476-3460
1220 S. St. Francis Dr., Santa Fe, NM
87505

State of New Mexico
Energy, Minerals and Natural Resources

Form C-103
Revised July 18, 2013

OIL CONSERVATION DIVISION
1220 South St. Francis Dr.
Santa Fe, NM 87505

WELL API NO.
30-005-60567
5. Indicate Type of Lease
STATE [X] FEE [ ]
6. State Oil & Gas Lease No.

SUNDRY NOTICES AND REPORTS ON WELLS
(DO NOT USE THIS FORM FOR PROPOSALS TO DRILL OR TO DEEPEN OR PLUG BACK TO A
DIFFERENT RESERVOIR. USE "APPLICATION FOR PERMIT" (FORM C-101) FOR SUCH
PROPOSALS.)
1. Type of Well: Oil Well [X] Gas Well [ ] Other [ ]
2. Name of Operator
CANYON E & P COMPANY
3. Address of Operator
251 O'Connor Ridge Blvd.Suite 265, Irving, TX 75038
4. Well Location
Unit Letter D: 990 feet from the N line and 954 feet from the W line
Section 30 Township 08S Range 29E NMPM Chaves
11. Elevation (Show whether DR, RKB, RT, GR, etc.)

12. Check Appropriate Box to Indicate Nature of Notice, Report or Other Data

NOTICE OF INTENTION TO:
PERFORM REMEDIAL WORK [ ] PLUG AND ABANDON [ ]
TEMPORARILY ABANDON [ ] CHANGE PLANS [ ]
PULL OR ALTER CASING [ ] MULTIPLE COMPL [ ]
DOWNHOLE COMMINGLE [ ]
CLOSED-LOOP SYSTEM [ ]
OTHER: [ ]
SUBSEQUENT REPORT OF:
REMEDIAL WORK [ ] ALTERING CASING [ ]
COMMENCE DRILLING OPNS. [ ] P AND A [X]
CASING/CEMENT JOB [ ]
OTHER: [ ]

13. Describe proposed or completed operations. (Clearly state all pertinent details, and give pertinent dates, including estimated date of starting any proposed work). SEE RULE 19.15.7.14 NMAC. For Multiple Completions: Attach wellbore diagram of proposed completion or recompletion.

NMOCD has plugged this well in accordance with the attached documents and uploaded daily reports.

Move on location: 1-14-26
Move off location: 2-26-26

Note: monitored bubbles at surface from 2-1-26 to completion. Surface plug was drilled out, monitored and re-pumped.

Spud Date: [ ] Rig Release Date: [ ]

I hereby certify that the information above is true and complete to the best of my knowledge and belief.

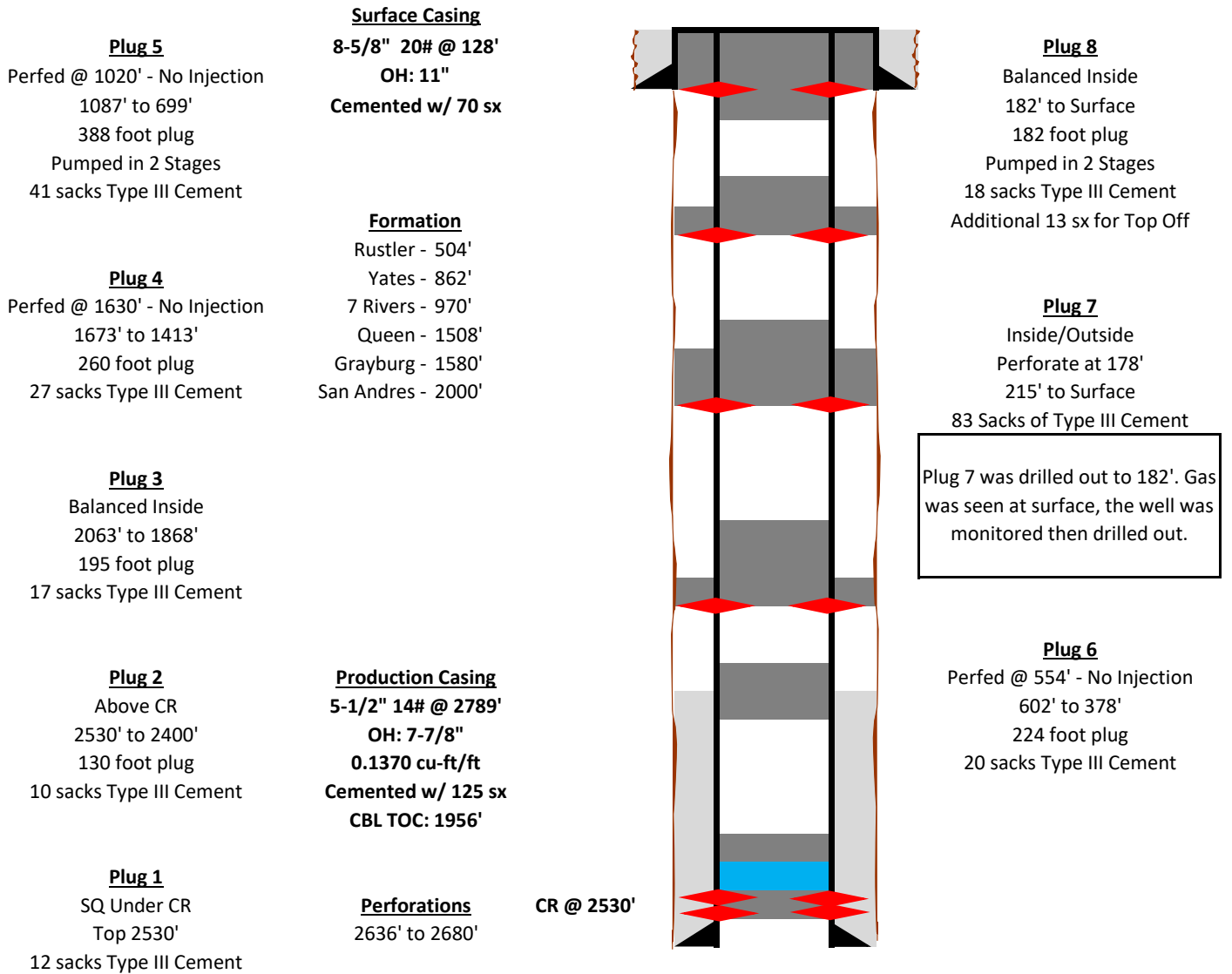
SIGNATURE: Ethan Wakefield TITLE: Authorized Representative DATE 2/26/26
Type or print name: Ethan Wakefield E-mail address: e.wakefield@dwsrigs.com PHONE: 405-343-7736
For State Use Only

APPROVED BY: TITLE DATE
Conditions of Approval (if any):



# Completed Wellbore Diagram

CANYON E&P COMPANY  
Kuchemann #001  
API: 30-005-60567  
Chaves County, New Mexico



Type III: 1.37 cu-ft/sx 14.6 ppg

### Plug Summary

Plug #	Plug Type	Perfs	CR/CIBP Depth	Outside SQ Sxs	Inside Sxs	Class/Type	Bottom	Top	Tag Depth
1	SQ under CR	2636 to 2680	2530		12	III		2530	
2	Above CR		2530		10	III	2530	2430	2400
3	Balanced Inside				17	III	2063	1900	1868
4	SQ Inside/Outside	1630	no injection		27	III	1673	1408	1413
5	SQ Inside/Outside	1020	no injection		33	III	1087	762	825
5	Top off				8	III	825	745	699
6	SQ Inside/Outside	554	no injection		20	III	602	404	378
7	<b>SQ from surface</b>	<b>178</b>	<b>Drilled out to 182</b>	<b>61</b>	<b>22</b>	<b>III</b>	<b>215</b>	<b>Surface</b>	
8	Balanced Inside				5	III	182	132	135
8	Balanced Inside				13	III	135	5	
	Top off				13	III	5	Surface	Surface



Figure 1: Top Off

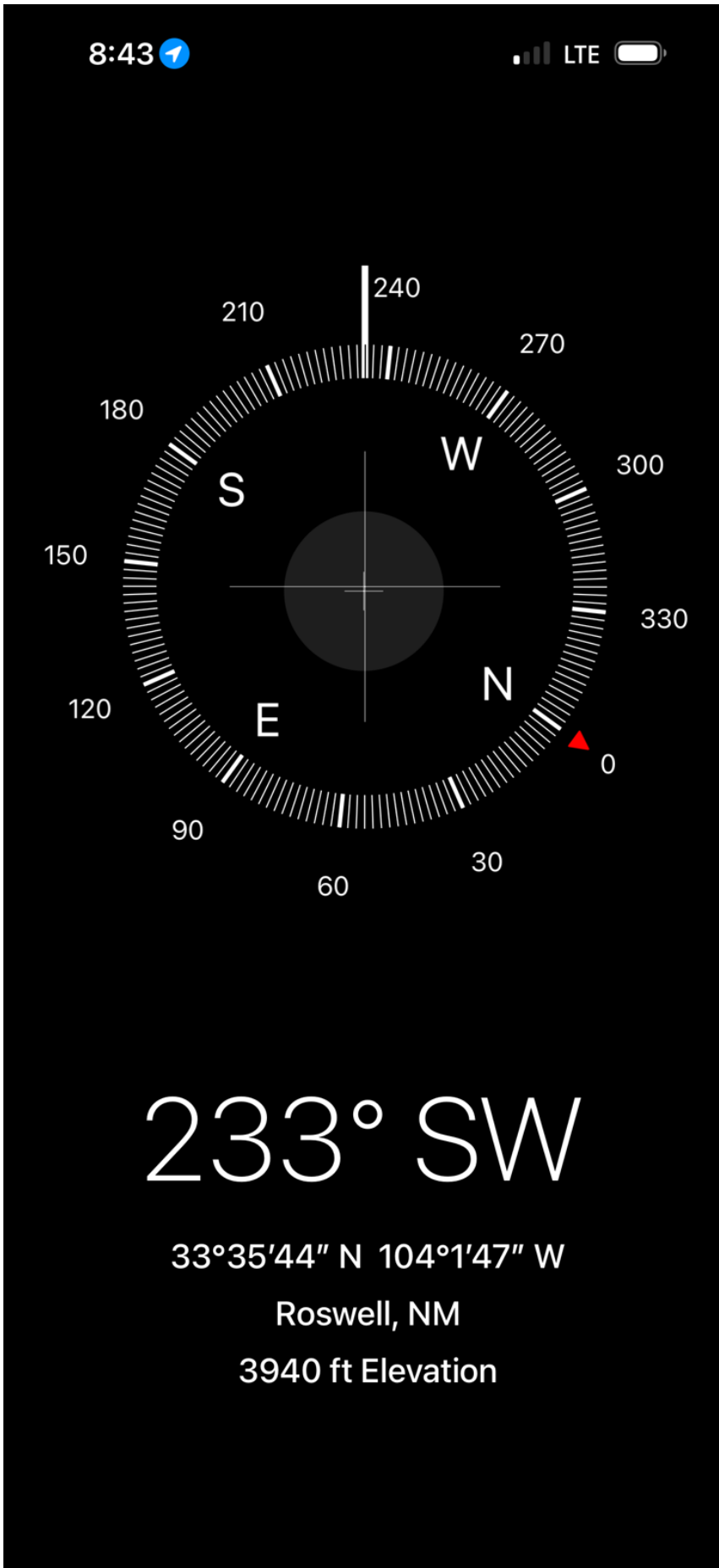


Figure 2: GPS

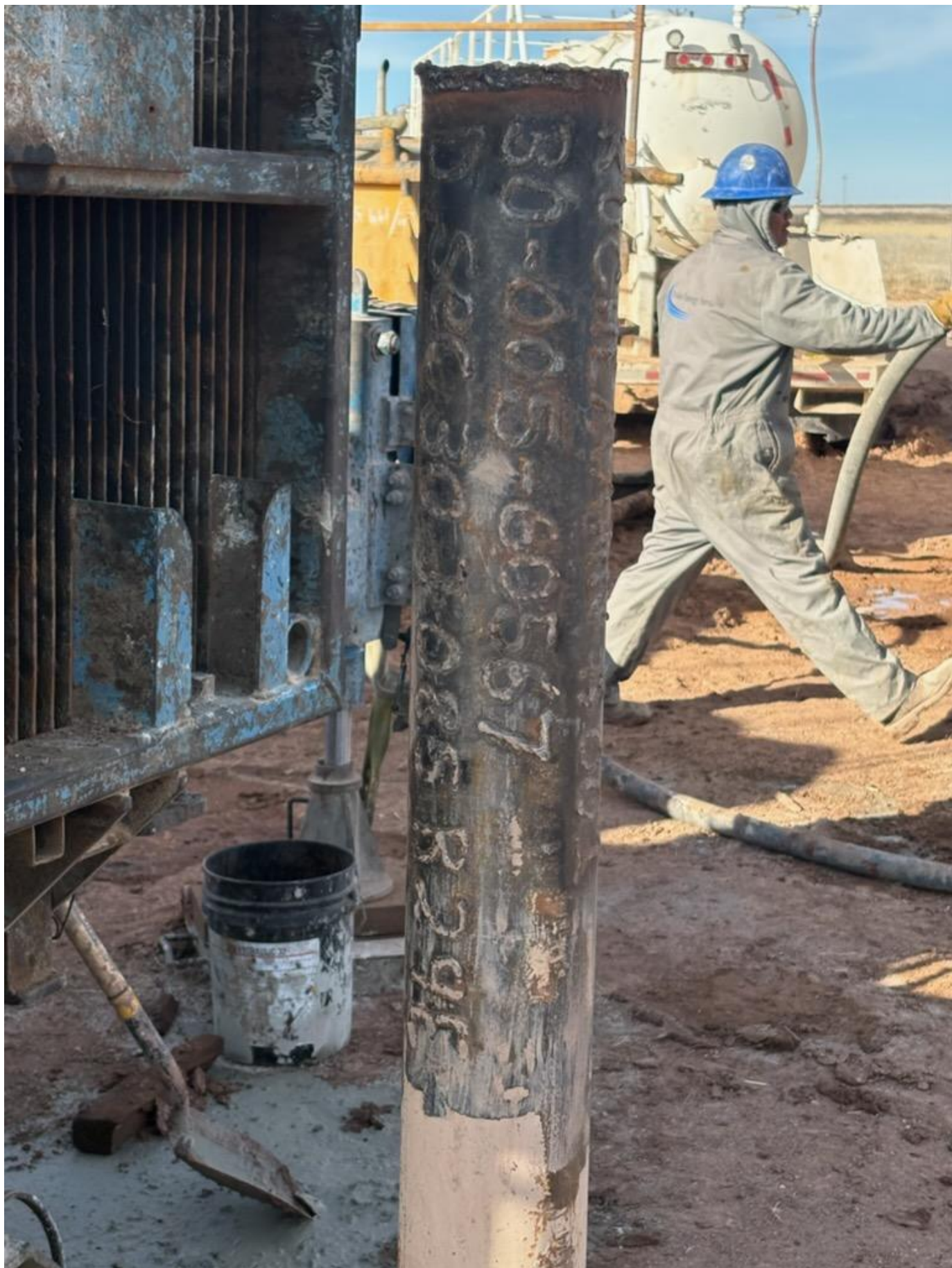


Figure 3: Marker

Sante Fe Main Office  
Phone: (505) 476-3441

General Information  
Phone: (505) 629-6116

Online Phone Directory  
<https://www.emnrd.nm.gov/ocd/contact-us>

**State of New Mexico**  
**Energy, Minerals and Natural Resources**  
**Oil Conservation Division**  
**1220 S. St Francis Dr.**  
**Santa Fe, NM 87505**

DEFINITIONS

Action 558702

**DEFINITIONS**

Operator: J.A. Drake Well Service Inc. (OPG Vendor) 607 W. Pinon St Farmington, NM 87401	OGRID: 333581
	Action Number: 558702
	Action Type: [UF-OMA] Sub. Plugging (UF-OMA-C-103P)

**DEFINITIONS**

The OCD Mitigation Activity (OMA) forms are a subset of the OCD's forms exclusively designed for activities related to State of New Mexico's contracted evaluation, plugging, decommissioning, remediation, salvage and reclamation activities. Specifically, these forms are typically used where the OCD has acquired a hearing order allowing the OCD to perform mitigation activities on wells and associated facilities that no longer have an authorized or viable operator to perform the necessary work. These forms are not to be utilized for any other purpose.

Sante Fe Main Office  
Phone: (505) 476-3441

General Information  
Phone: (505) 629-6116

Online Phone Directory  
<https://www.emnrd.nm.gov/ocd/contact-us>

**State of New Mexico**  
**Energy, Minerals and Natural Resources**  
**Oil Conservation Division**  
**1220 S. St Francis Dr.**  
**Santa Fe, NM 87505**

QUESTIONS

Action 558702

**QUESTIONS**

Operator: J.A. Drake Well Service Inc. (OPG Vendor) 607 W. Pinon St Farmington, NM 87401	OGRID: 333581
	Action Number: 558702
	Action Type: [UF-OMA] Sub. Plugging (UF-OMA-C-103P)

**QUESTIONS**

<b>Prerequisites</b>	
[OGRID] Well Operator	[269864] CANYON E & P COMPANY
[API] Well Name and Number	[30-005-60567] KUCHEMANN #001
Well Status	Plugged (not released)

Sante Fe Main Office  
Phone: (505) 476-3441

General Information  
Phone: (505) 629-6116

Online Phone Directory  
<https://www.emnrd.nm.gov/ocd/contact-us>

**State of New Mexico**  
**Energy, Minerals and Natural Resources**  
**Oil Conservation Division**  
**1220 S. St Francis Dr.**  
**Santa Fe, NM 87505**

CONDITIONS

Action 558702

**CONDITIONS**

Operator: J.A. Drake Well Service Inc. (OPG Vendor) 607 W. Pinon St Farmington, NM 87401	OGRID: 333581
	Action Number: 558702
	Action Type: [UF-OMA] Sub. Plugging (UF-OMA-C-103P)

**CONDITIONS**

Created By	Condition	Condition Date
loren.diede	None	3/2/2026