

District I  
1625 N. French Dr., Hobbs, NM 88240  
District II  
811 S. First St., Artesia, NM 88210  
District III  
1000 Rio Brazos Rd., Aztec, NM 87410  
District IV  
1220 S. St. Francis Dr., Santa Fe, NM 87505

State of New Mexico  
Energy, Minerals & Natural  
Resources

Form C-104  
Revised August 1, 2011

Submit one copy to appropriate District Office

Oil Conservation Division  
1220 South St. Francis Dr.

AMENDED REPORT

**I. REQUEST FOR ALLOWABLE MINERAL AUTHORIZATION TO TRANSPORT**

<sup>1</sup> Operator name and Address EOG RESOURCES INC PO BOX 2267 MIDLAND, TEXAS 79702		<sup>2</sup> OGRID Number 7377
		<sup>3</sup> Reason for Filing Code/ Effective Date NW 11/26/2022
<sup>4</sup> API Number 30 - 025- 48879	<sup>5</sup> Pool Name WC025 G09 S253309P; UPPER WOLFCAMP	<sup>6</sup> Pool Code 98180
<sup>7</sup> Property Code 329701	<sup>8</sup> Property Name RUTHLESS 11 FEDERAL COM	<sup>9</sup> Well Number 750H

**II. <sup>10</sup> Surface Location**

Ul or lot no.	Section	Township	Range	Lot Idn	Feet from the	North/South Line	Feet from the	East/West line	County
B	11	25S	32E		494	NORTH	1756	EAST	LEA

**<sup>11</sup> Bottom Hole Location**

UL or lot no.	Section	Township	Range	Lot Idn	Feet from the	North/South line	Feet from the	East/West line	County
P	14	25S	32E		108	SOUTH	955	EAST	LEA

<sup>12</sup> Lse Code	<sup>13</sup> Producing Method Code FLOWING	<sup>14</sup> Gas Connection Date	<sup>15</sup> C-129 Permit Number	<sup>16</sup> C-129 Effective Date	<sup>17</sup> C-129 Expiration Date
------------------------	--	-----------------------------------	-----------------------------------	------------------------------------	-------------------------------------

**III. Oil and Gas Transporters**

<sup>18</sup> Transporter OGRID	<sup>19</sup> Transporter Name and Address	<sup>20</sup> O/G/W
372812	EOGRM	OIL
151618	ENTERPRISE FIELD SERVICES	GAS
298751	REGENCY FIELD SERVICES	GAS
36785	DCP MIDSTREAM	GAS

**IV. Well Completion Data**

<sup>21</sup> Spud Date 07/10/2022	<sup>22</sup> Ready Date 11/26/2022	<sup>23</sup> TD 23,212'	<sup>24</sup> PBDT 23,187'	<sup>25</sup> Perforations 13,026 - 23,187'	<sup>26</sup> DHC, MC
<sup>27</sup> Hole Size		<sup>28</sup> Casing & Tubing Size		<sup>29</sup> Depth Set	
12 1/4"		9 5/8"		1050'	
8 3/4"		7 5/8"		12,460'	
6 3/4"		5 1/2"		23,194'	
				30 Sacks Cement	
				545 SXS CL C/CIRC	
				1531 SXS CL C&H/ CIRC	
				1120 SXS CL H TOC 10,733' CBL	

**V. Well Test Data**

<sup>31</sup> Date New Oil 11/26/2022	<sup>32</sup> Gas Delivery Date 11/26/2022	<sup>33</sup> Test Date 12/21/2022	<sup>34</sup> Test Length 24 HRS	<sup>35</sup> Tbg. Pressure	<sup>36</sup> Csg. Pressure 1818
<sup>37</sup> Choke Size 78	<sup>38</sup> Oil 1356	<sup>39</sup> Water 8785	<sup>40</sup> Gas 9134		<sup>41</sup> Test Method

<sup>42</sup> I hereby certify that the rules of the Oil Conservation Division have been complied with and that the information given above is true and complete to the best of my knowledge and belief.

Signature: Kay Maddox  
Printed name: Kay Maddox  
Title: SENIOR REGULATORY SPECIALIST  
E-mail Address: kay\_maddox@eogresources.com  
Date: 12/22/2022 Phone: 432-638-8475

OIL CONSERVATION DIVISION  
Approved by:  
Title:  
Approval Date:

District I  
1625 N. French Dr., Hobbs, NM 88240  
Phone: (575) 393-6161 Fax: (575) 393-0720  
District II  
811 S. First St., Artesia, NM 88210  
Phone: (575) 748-1283 Fax: (575) 748-9720  
District III  
1000 Rio Brazos Road, Aztec, NM 87410  
Phone: (505) 334-6178 Fax: (505) 334-6170  
District IV  
1220 S. St. Francis Dr., Santa Fe, NM 87505  
Phone: (505) 476-3460 Fax: (505) 476-3462

State of New Mexico  
Energy, Minerals & Natural Resources  
Department  
OIL CONSERVATION DIVISION  
1220 South St. Francis Dr.  
Santa Fe, NM 87505

FORM C-102

Revised August 1, 2011

Submit one copy to appropriate

District Office

AMENDED REPORT

AS-DRILLED PLAT

<sup>1</sup> API Number <b>30-025-48879</b>		<sup>2</sup> Pool Code <b>98180</b>		<sup>3</sup> Pool Name <b>WC025 G09 S253309P; UPPER WOLFCAMP</b>	
<sup>4</sup> Property Code <b>329701</b>		<sup>5</sup> Property Name <b>RUTHLESS 11 FED COM</b>			<sup>6</sup> Well Number <b>750H</b>
<sup>7</sup> OGRID No. <b>7377</b>		<sup>8</sup> Operator Name <b>EOG RESOURCES, INC.</b>			<sup>9</sup> Elevation <b>3512'</b>

<sup>10</sup>Surface Location

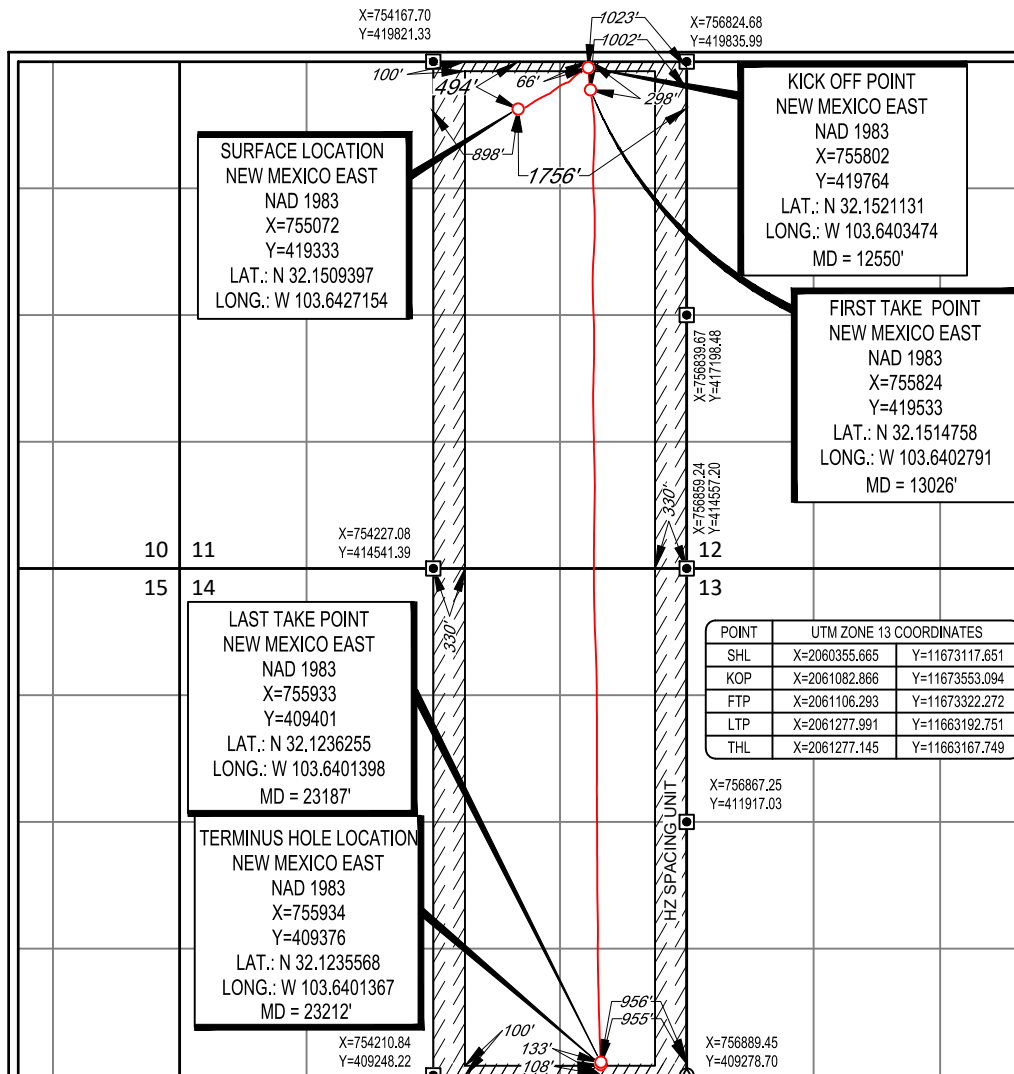
UL or lot no.	Section	Township	Range	Lot Idn	Feet from the	North/South line	Feet from the	East/West line	County
<b>B</b>	<b>11</b>	<b>25-S</b>	<b>32-E</b>	<b>-</b>	<b>494'</b>	<b>NORTH</b>	<b>1756'</b>	<b>EAST</b>	<b>LEA</b>

<sup>11</sup>Bottom Hole Location If Different From Surface

UL or lot no.	Section	Township	Range	Lot Idn	Feet from the	North/South line	Feet from the	East/West line	County
<b>P</b>	<b>14</b>	<b>25-S</b>	<b>32-E</b>	<b>-</b>	<b>108'</b>	<b>SOUTH</b>	<b>955'</b>	<b>EAST</b>	<b>LEA</b>

<sup>12</sup> Dedicated Acres <b>640.00</b>	<sup>13</sup> Joint or Infill	<sup>14</sup> Consolidation Code	<sup>15</sup> Order No.
--	-------------------------------	----------------------------------	-------------------------

No allowable will be assigned to this completion until all interests have been consolidated or a non-standard unit has been approved by the division.



<sup>17</sup>OPERATOR CERTIFICATION  
I hereby certify that the information contained herein is true and complete to the best of my knowledge and belief, and that this organization either owns a working interest or unleased mineral interest in the land including the proposed bottom hole location or has a right to drill this well at this location pursuant to a contract with an owner of such a mineral or working interest, or to a voluntary pooling agreement or a compulsory pooling order heretofore entered by the division.

*Kay Maddox* 12/12/2022  
Signature Date

**KAY MADDOX**  
Printed Name

**KAY\_MADDOX@EOGRESOURCES.COM**  
E-mail Address

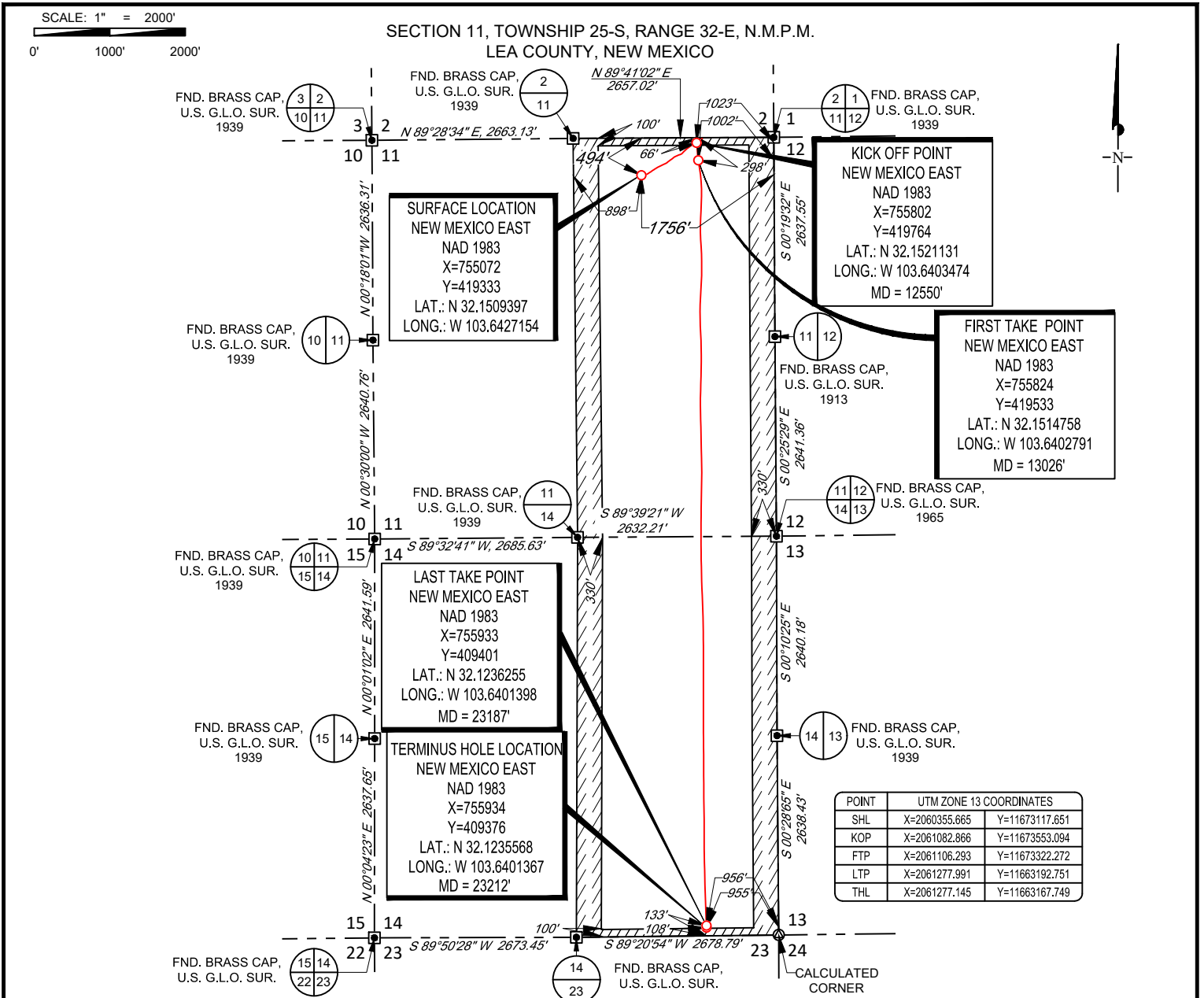
<sup>18</sup>SURVEYOR CERTIFICATION  
I hereby certify that the well location shown on this plat was plotted from field notes of actual surveys made by me or under my supervision, and that the same is true to the best of my belief.

**06/29/2022**  
Date of Survey

*Ramon A. Dominguez*  
Signature and Seal of Professional Surveyor

**RAMON A. DOMINGUEZ**  
NEW MEXICO  
24508  
PROFESSIONAL SURVEYOR

Certificate Number



LEASE NAME & WELL NO.: RUTHLESS 11 FED COM 750H  
 SECTION 11 TWP 25-S RGE 32-E SURVEY N.M.P.M.  
 COUNTY LEA STATE NM ELEVATION 3512'  
 DESCRIPTION 494' FNL & 1756' FEL



Ramon A. Dominguez, P.S. No. 24508  
November 21, 2022



1400 EVERMAN PARKWAY, Ste. 146 • FT. WORTH, TEXAS 76140  
 TELEPHONE: (817) 744-7512 • FAX (817) 744-7554  
 2903 NORTH BIG SPRING • MIDLAND, TEXAS 79705  
 TELEPHONE: (432) 682-1653 OR (800) 767-1653 • FAX (432) 682-1743  
 WWW.TOPOGRAPHIC.COM



RUTHLESS 11 FED COM 750H AS-DRILLED	REVISION:
DATE: 11/21/2022	
FILE:AD_RUTHLESS_11_FED_COM_750H	
DRAWN BY: SAR	
SHEET: 2 OF 2	

NOTES:  
 1. ORIGINAL DOCUMENT SIZE: 8.5" X 11"  
 2. ALL BEARINGS, DISTANCES, AND COORDINATE VALUES CONTAINED HEREIN ARE GRID BASED UPON THE NEW MEXICO COORDINATE SYSTEM OF 1983, EAST ZONE, U.S. SURVEY FEET.  
 3. THIS WELL LOCATION SHOWN HEREON HAS BEEN SURVEYED ON THE GROUND UNDER MY SUPERVISION AND PREPARED ACCORDING TO THE EVIDENCE FOUND AT THE TIME OF SURVEY, AND DATA PROVIDED BY EOG RESOURCES, INC. THIS CERTIFICATION IS MADE AND LIMITED TO THOSE PERSONS OR ENTITIES SHOWN ON THE FACE OF THIS PLAT AND IS NON-TRANSFERABLE. THIS SURVEY IS CERTIFIED FOR THIS TRANSACTION ONLY.



Lea County, NM (NAD 83 NME)

Ruthless 11 Fed Com #750H

H&P 534

OH

PROJECT DETAILS: Lea County, NM (NAD 83 NME)

Geodetic System: US State Plane 1983  
 Datum: North American Datum 1983  
 Ellipsoid: GRS 1980  
 Zone: New Mexico Eastern Zone  
 System Datum: Mean Sea Level

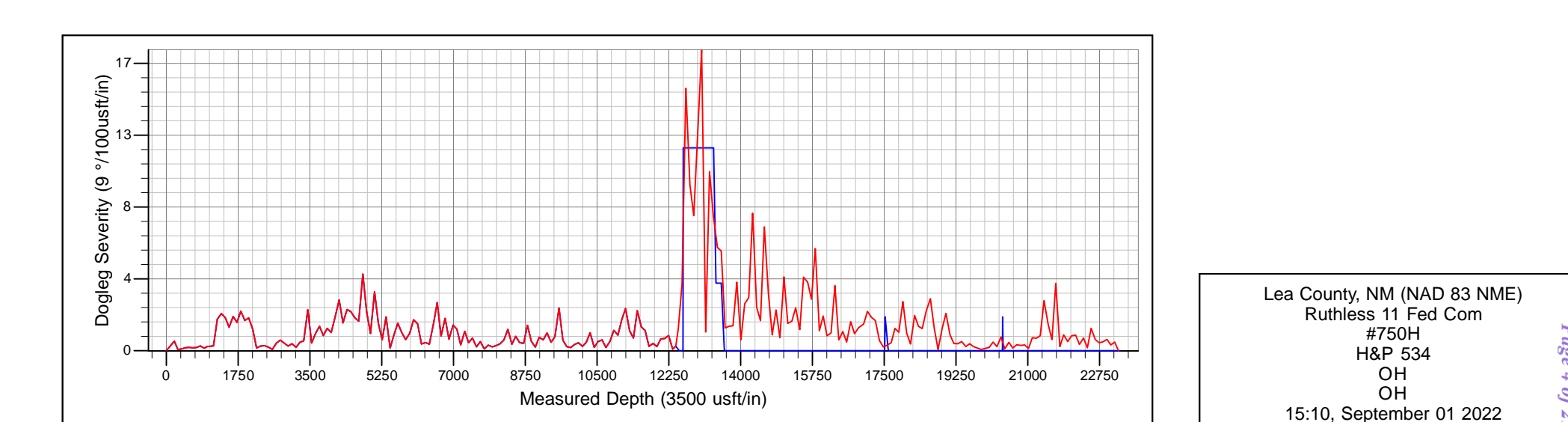
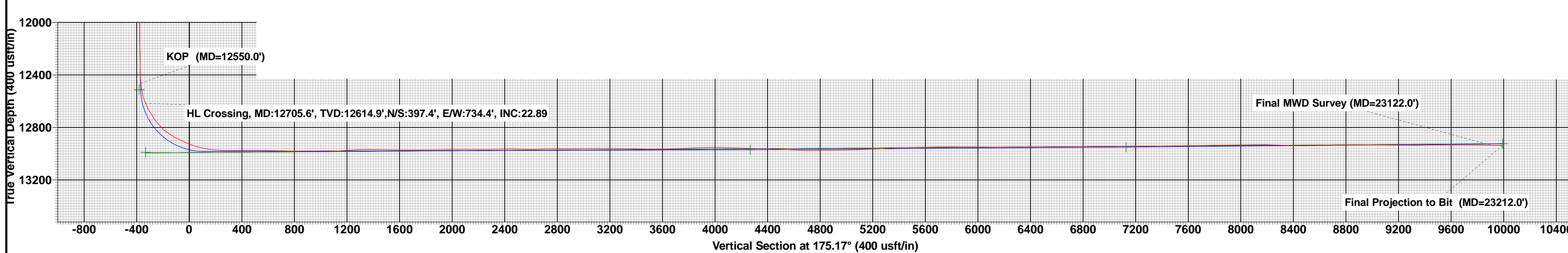
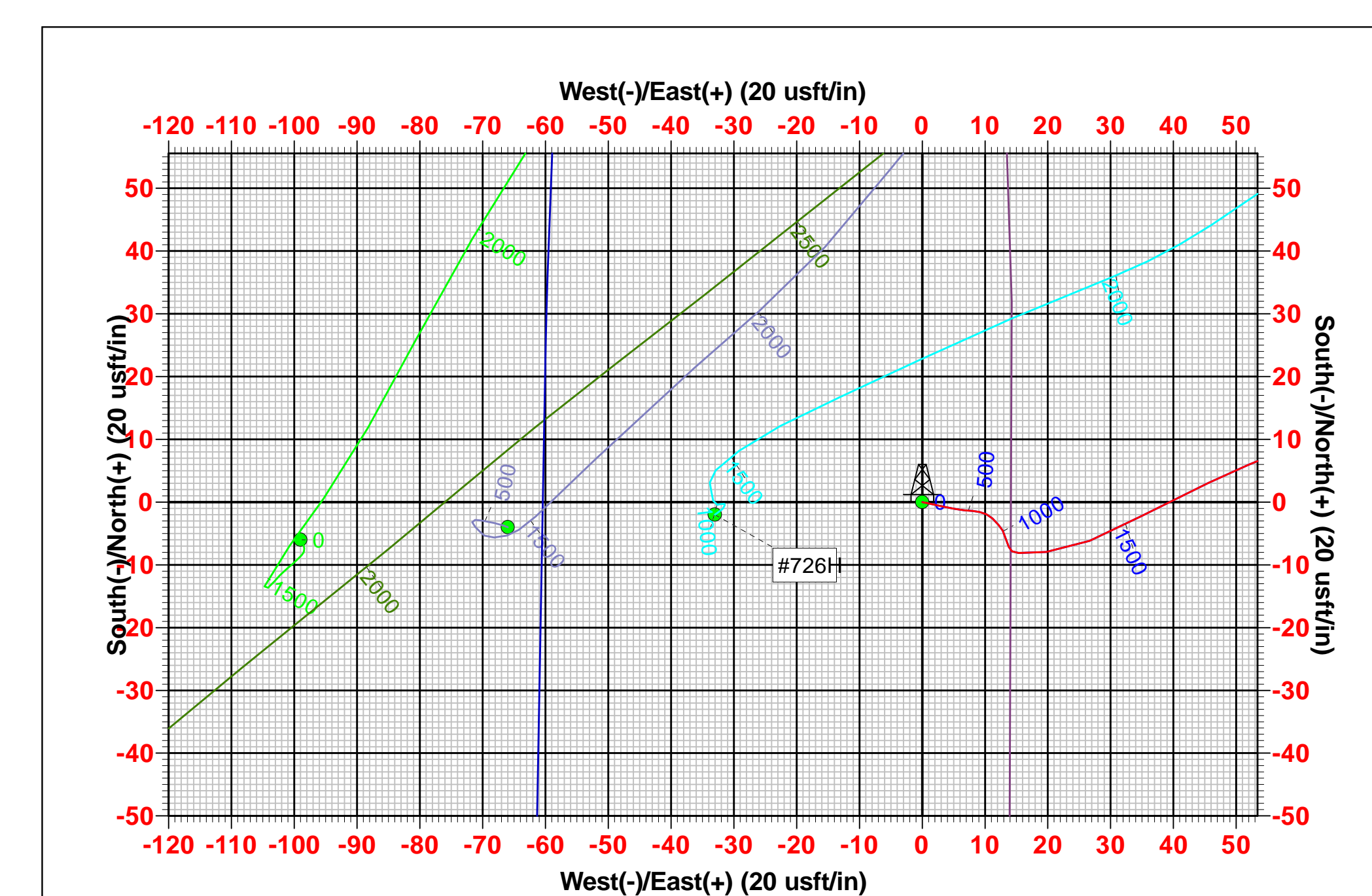
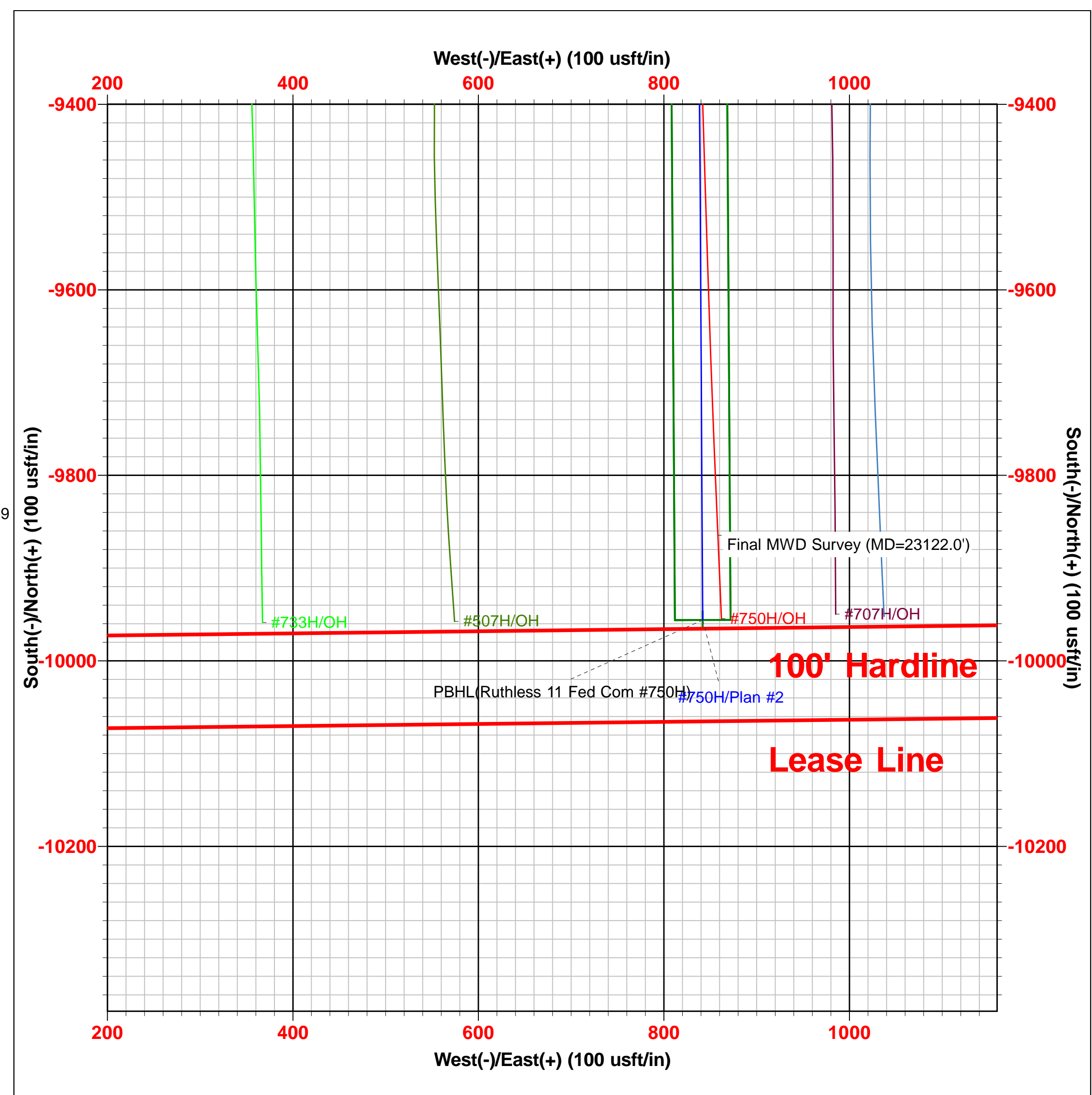
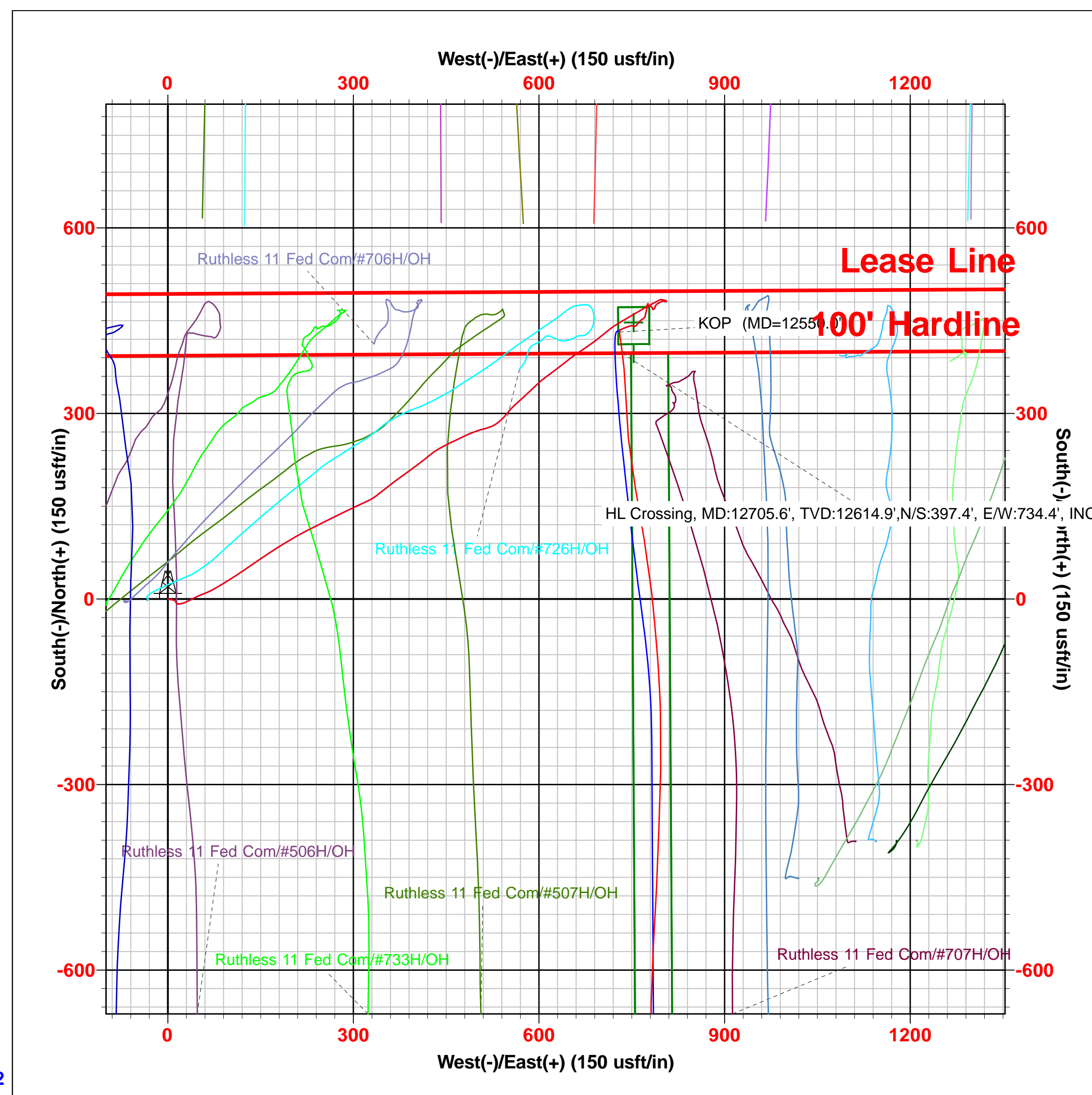
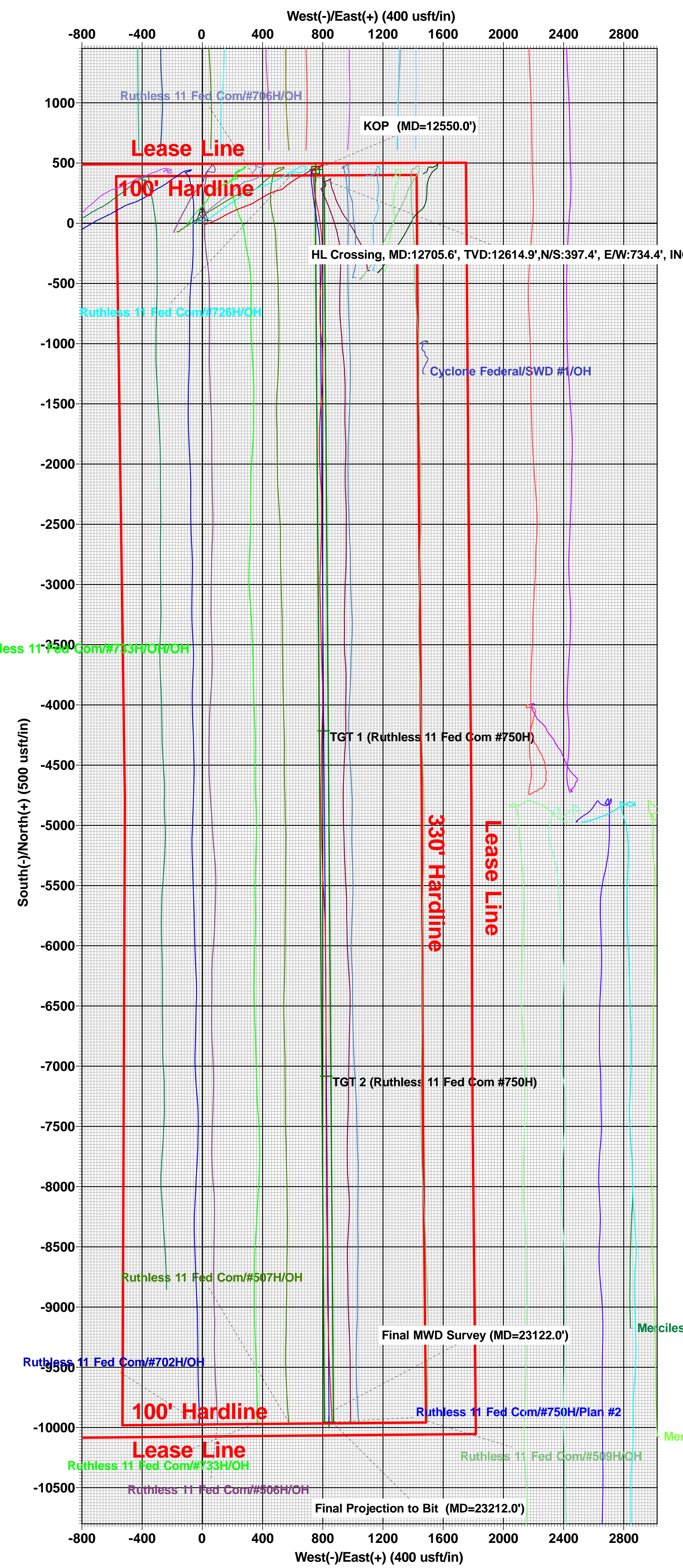
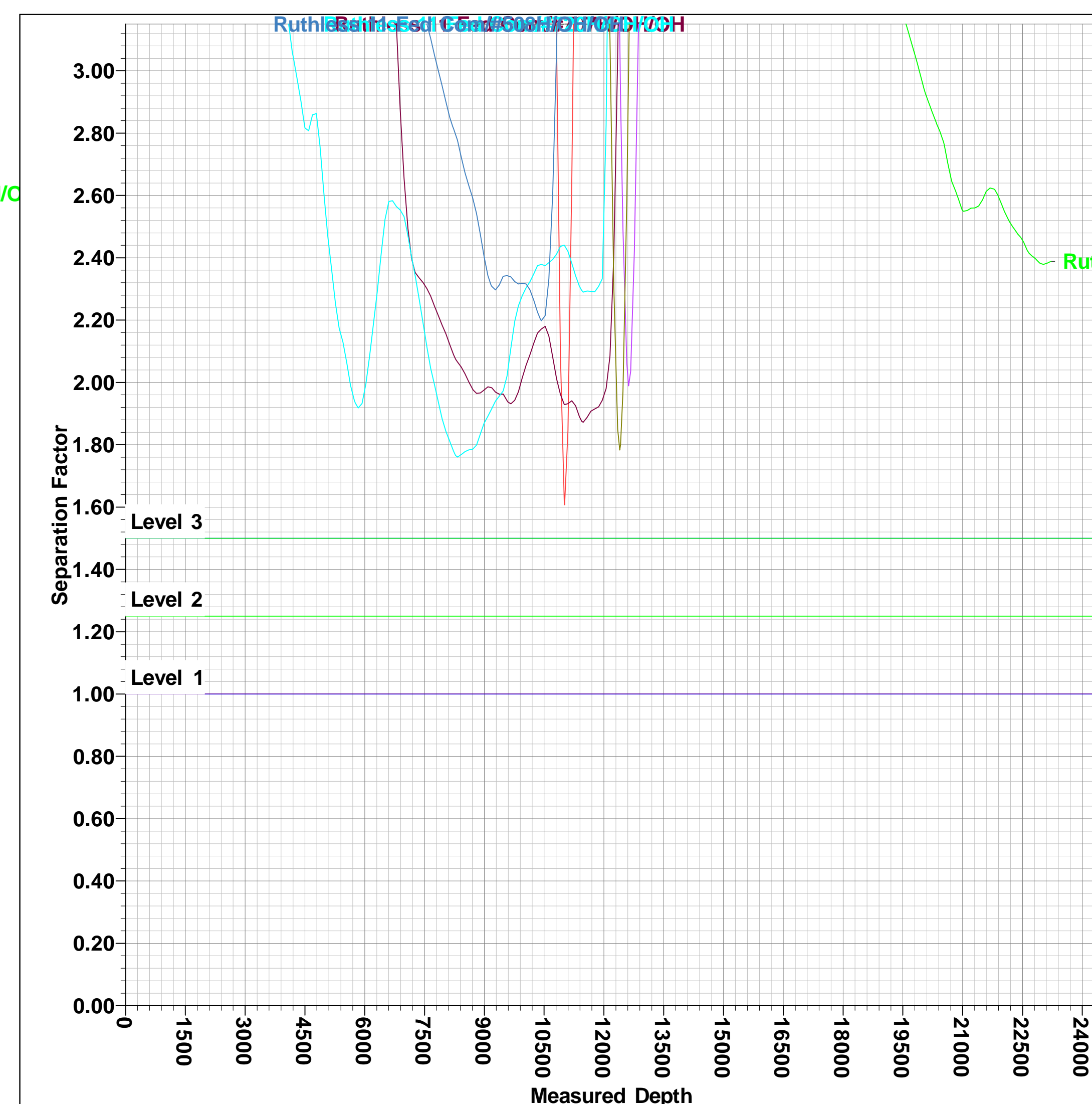
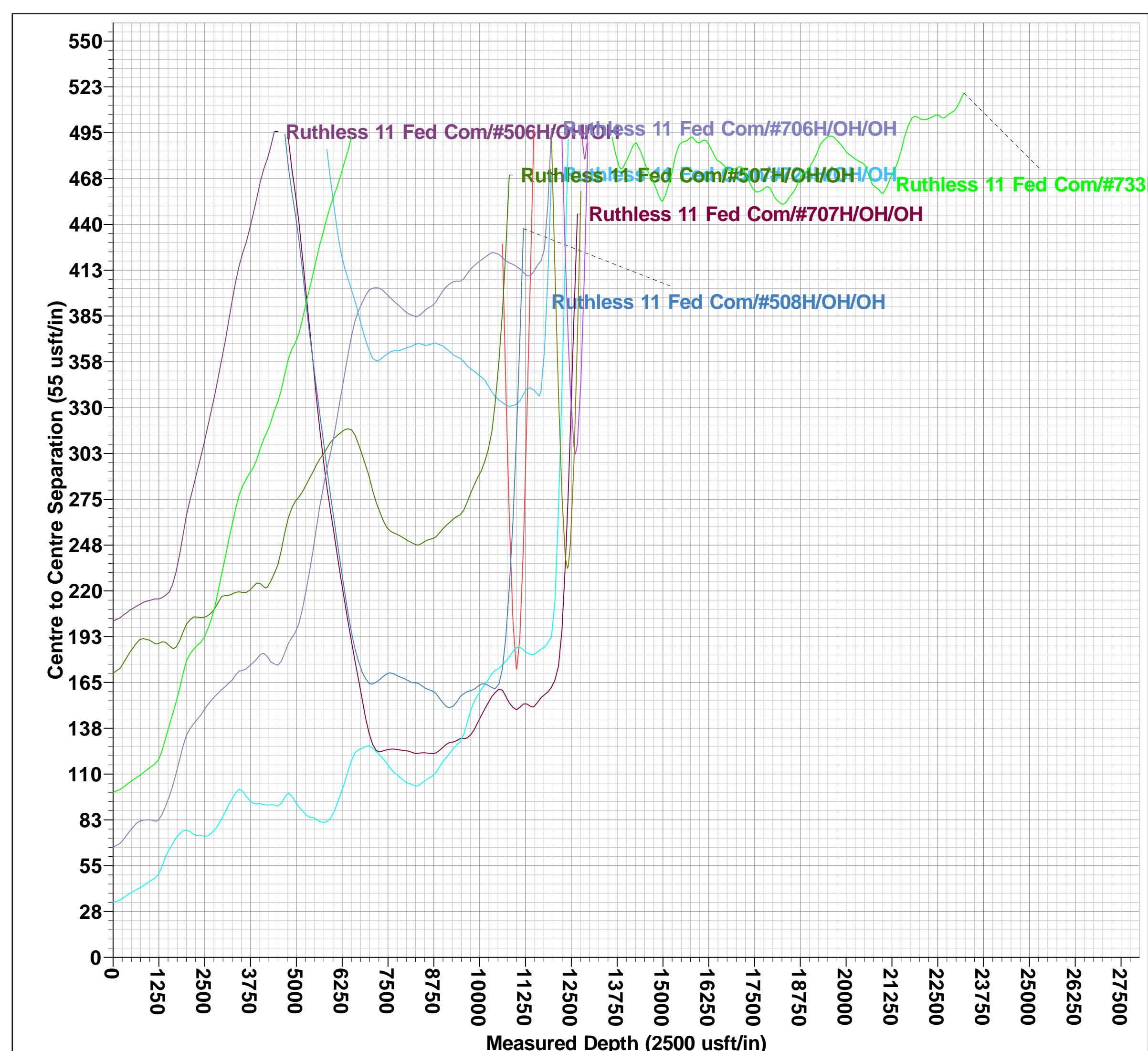
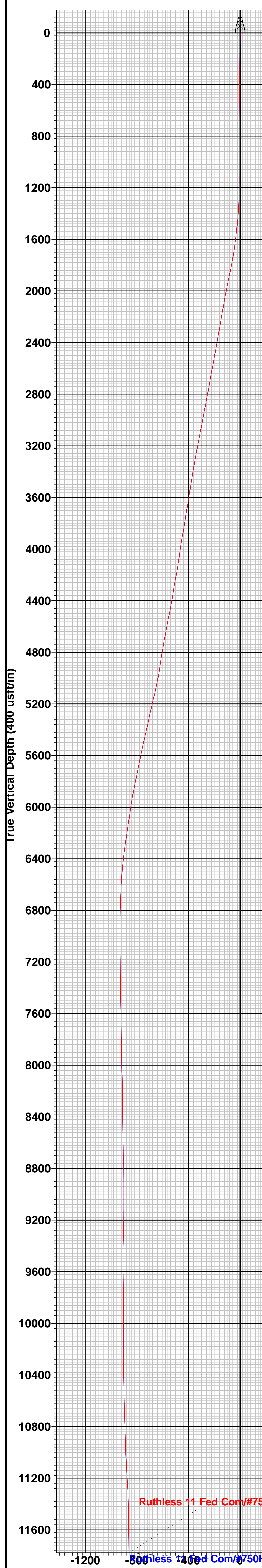
WELL DETAILS: #750H

Northings	KB = 30' @ 3542.0usft (H&P 534)	3512.0	
419333.00	Easting	755072.00	Latitude
		32° 9' 3.386 N	Longitude
			103° 38' 33.771 W



Azimuths to Grid North  
 True North: -0.37°  
 Magnetic North: 6.08°  
 Magnetic Field Strength: 47328.4nT  
 Dip Angle: 59.79°  
 Date: 7/21/2022  
 Model: IGRF2020

To convert a Magnetic Direction to a Grid Direction, Add 6.08°  
 To convert a Magnetic Direction to a True Direction, Add 6.44° East  
 To convert a True Direction to a Grid Direction, Subtract 0.37°





## Midland

Lea County, NM (NAD 83 NME)

Ruthless 11 Fed Com

#750H

OH

Design: OH

## Final PVA

01 September, 2022



Final PVA

<b>Company:</b>	Midland	<b>Local Co-ordinate Reference:</b>	Well #750H
<b>Project:</b>	Lea County, NM (NAD 83 NME)	<b>TVD Reference:</b>	KB = 30' @ 3542.0usft (H&P 534)
<b>Site:</b>	Ruthless 11 Fed Com	<b>MD Reference:</b>	KB = 30' @ 3542.0usft (H&P 534)
<b>Well:</b>	#750H	<b>North Reference:</b>	Grid
<b>Wellbore:</b>	OH	<b>Survey Calculation Method:</b>	Minimum Curvature
<b>Design:</b>	OH	<b>Database:</b>	PEDM

<b>Project</b>	Lea County, NM (NAD 83 NME)		
<b>Map System:</b>	US State Plane 1983	<b>System Datum:</b>	Mean Sea Level
<b>Geo Datum:</b>	North American Datum 1983		
<b>Map Zone:</b>	New Mexico Eastern Zone		

<b>Site</b>	Ruthless 11 Fed Com		
<b>Site Position:</b>		<b>Northing:</b>	419,142.00 usft
<b>From:</b>	Map	<b>Easting:</b>	752,042.00 usft
<b>Position Uncertainty:</b>	0.0 usft	<b>Slot Radius:</b>	13-3/16 "
		<b>Latitude:</b>	32° 9' 1.687 N
		<b>Longitude:</b>	103° 39' 9.029 W
		<b>Grid Convergence:</b>	0.36 °

<b>Well</b>	#750H					
<b>Well Position</b>	<b>+N/-S</b>	0.0 usft	<b>Northing:</b>	419,333.00 usft	<b>Latitude:</b>	32° 9' 3.386 N
	<b>+E/-W</b>	0.0 usft	<b>Easting:</b>	755,072.00 usft	<b>Longitude:</b>	103° 38' 33.771 W
<b>Position Uncertainty</b>		0.0 usft	<b>Wellhead Elevation:</b>	usft	<b>Ground Level:</b>	3,512.0 usft

<b>Wellbore</b>	OH				
<b>Magnetics</b>	<b>Model Name</b>	<b>Sample Date</b>	<b>Declination (°)</b>	<b>Dip Angle (°)</b>	<b>Field Strength (nT)</b>
	IGRF2020	7/21/2022	6.44	59.79	47,328.41754464

<b>Design</b>	OH			
<b>Audit Notes:</b>				
<b>Version:</b>	1.0	<b>Phase:</b>	ACTUAL	
		<b>Tie On Depth:</b>	0.0	
<b>Vertical Section:</b>	<b>Depth From (TVD) (usft)</b>	<b>+N/-S (usft)</b>	<b>+E/-W (usft)</b>	<b>Direction (°)</b>
	0.0	0.0	0.0	175.17

<b>Survey Program</b>	<b>Date</b>	9/1/2022		
<b>From (usft)</b>	<b>To (usft)</b>	<b>Survey (Wellbore)</b>	<b>Tool Name</b>	<b>Description</b>
191.0	23,212.0	Gordon MWD #1 (OH)	EOG MWD+IFR1	MWD + IFR1



Final PVA

<b>Company:</b>	Midland	<b>Local Co-ordinate Reference:</b>	Well #750H
<b>Project:</b>	Lea County, NM (NAD 83 NME)	<b>TVD Reference:</b>	KB = 30' @ 3542.0usft (H&P 534)
<b>Site:</b>	Ruthless 11 Fed Com	<b>MD Reference:</b>	KB = 30' @ 3542.0usft (H&P 534)
<b>Well:</b>	#750H	<b>North Reference:</b>	Grid
<b>Wellbore:</b>	OH	<b>Survey Calculation Method:</b>	Minimum Curvature
<b>Design:</b>	OH	<b>Database:</b>	PEDM

Survey												
MD (usft)	Inc (°)	Azi (azimuth) (°)	TVD (usft)	N/S (usft)	E/W (usft)	DLeg (°/100usft)	Build (°/100usft)	Turn (°/100usft)	High to Plan (usft)	Right to Plan (usft)		
0.0	0.00	0.00	0.0	0.0	0.0	0.00	0.00	0.00	0.00	0.0	0.0	0.0
191.0	1.08	101.66	191.0	-0.4	1.8	0.57	0.57	0.00	0.0	0.0	0.0	0.0
281.0	1.14	102.28	281.0	-0.7	3.5	0.07	0.07	0.69	0.0	0.0	0.0	0.0
369.0	1.06	101.42	369.0	-1.1	5.1	0.09	-0.09	-0.98	0.0	0.0	0.0	0.0
459.0	0.96	94.96	458.9	-1.3	6.7	0.17	-0.11	-7.18	0.0	0.0	0.0	0.0
545.0	0.80	94.30	544.9	-1.4	8.0	0.19	-0.19	-0.77	0.0	0.0	0.0	0.0
632.0	0.71	102.49	631.9	-1.6	9.1	0.16	-0.10	9.41	0.0	0.0	0.0	0.0
730.0	0.63	115.77	729.9	-1.9	10.2	0.18	-0.08	13.55	0.0	0.0	0.0	0.0
826.0	0.80	131.98	825.9	-2.6	11.2	0.27	0.18	16.89	0.0	0.0	0.0	0.0
922.0	0.89	138.94	921.9	-3.6	12.2	0.14	0.09	7.25	0.0	0.0	0.0	0.0
991.0	0.96	148.09	990.9	-4.5	12.8	0.24	0.10	13.26	0.0	0.0	0.0	0.0
1,146.0	1.14	169.27	1,145.9	-7.1	13.8	0.27	0.12	13.66	0.0	0.0	0.0	0.0
1,242.0	1.63	90.87	1,241.8	-8.1	15.4	1.87	0.51	-81.67	0.0	0.0	0.0	0.0
1,337.0	3.71	86.61	1,336.7	-7.9	19.8	2.20	2.19	-4.48	0.0	0.0	0.0	0.0
1,433.0	4.91	67.31	1,432.5	-6.2	26.7	1.94	1.25	-20.10	0.0	0.0	0.0	0.0
1,528.0	6.14	62.34	1,527.0	-2.2	34.9	1.39	1.29	-5.23	0.0	0.0	0.0	0.0
1,624.0	8.06	64.46	1,622.3	3.0	45.5	2.02	2.00	2.21	0.0	0.0	0.0	0.0
1,720.0	9.50	69.09	1,717.2	8.8	59.0	1.67	1.50	4.82	0.0	0.0	0.0	0.0
1,815.0	11.07	60.33	1,810.6	16.1	74.3	2.33	1.65	-9.22	0.0	0.0	0.0	0.0
1,911.0	12.75	58.79	1,904.6	26.1	91.3	1.78	1.75	-1.60	0.0	0.0	0.0	0.0
2,007.0	10.91	57.63	1,998.5	36.5	108.1	1.93	-1.92	-1.21	0.0	0.0	0.0	0.0
2,103.0	9.79	55.08	2,093.0	46.0	122.4	1.26	-1.17	-2.66	0.0	0.0	0.0	0.0
2,198.0	9.92	55.40	2,186.6	55.3	135.8	0.15	0.14	0.34	0.0	0.0	0.0	0.0
2,294.0	10.17	55.75	2,281.1	64.8	149.6	0.27	0.26	0.36	0.0	0.0	0.0	0.0
2,390.0	10.34	57.02	2,375.6	74.2	163.8	0.29	0.18	1.32	0.0	0.0	0.0	0.0
2,485.0	10.35	58.15	2,469.0	83.4	178.2	0.21	0.01	1.19	0.0	0.0	0.0	0.0
2,581.0	10.36	58.50	2,563.4	92.4	192.9	0.07	0.01	0.36	0.0	0.0	0.0	0.0



Final PVA

<b>Company:</b>	Midland	<b>Local Co-ordinate Reference:</b>	Well #750H
<b>Project:</b>	Lea County, NM (NAD 83 NME)	<b>TVD Reference:</b>	KB = 30' @ 3542.0usft (H&P 534)
<b>Site:</b>	Ruthless 11 Fed Com	<b>MD Reference:</b>	KB = 30' @ 3542.0usft (H&P 534)
<b>Well:</b>	#750H	<b>North Reference:</b>	Grid
<b>Wellbore:</b>	OH	<b>Survey Calculation Method:</b>	Minimum Curvature
<b>Design:</b>	OH	<b>Database:</b>	PEDM

Survey												
MD (usft)	Inc (°)	Azi (azimuth) (°)	TVD (usft)	N/S (usft)	E/W (usft)	DLeg (°/100usft)	Build (°/100usft)	Turn (°/100usft)	High to Plan (usft)	Right to Plan (usft)		
2,677.0	10.63	60.26	2,657.8	101.3	208.0	0.44	0.28	1.83	0.0	0.0		
2,773.0	10.46	63.33	2,752.2	109.6	223.4	0.61	-0.18	3.20	0.0	0.0		
2,964.0	10.97	63.16	2,939.9	125.6	255.1	0.27	0.27	-0.09	0.0	0.0		
3,060.0	11.35	63.32	3,034.1	134.0	271.7	0.40	0.40	0.17	0.0	0.0		
3,156.0	11.41	64.25	3,128.2	142.4	288.7	0.20	0.06	0.97	0.0	0.0		
3,251.0	10.97	65.13	3,221.4	150.2	305.4	0.50	-0.46	0.93	0.0	0.0		
3,347.0	10.42	65.71	3,315.7	157.7	321.6	0.58	-0.57	0.60	0.0	0.0		
3,443.0	9.66	53.11	3,410.3	166.1	336.0	2.42	-0.79	-13.12	0.0	0.0		
3,539.0	9.37	51.20	3,504.9	175.8	348.5	0.45	-0.30	-1.99	0.0	0.0		
3,635.0	8.44	52.78	3,599.8	185.0	360.2	1.00	-0.97	1.65	0.0	0.0		
3,730.0	9.81	52.88	3,693.6	194.1	372.2	1.44	1.44	0.11	0.0	0.0		
3,826.0	8.99	54.45	3,788.3	203.3	384.8	0.89	-0.85	1.64	0.0	0.0		
3,922.0	10.24	53.43	3,882.9	212.8	397.8	1.31	1.30	-1.06	0.0	0.0		
4,018.0	9.21	52.94	3,977.5	222.5	410.8	1.08	-1.07	-0.51	0.0	0.0		
4,113.0	7.40	49.48	4,071.5	231.1	421.5	1.98	-1.91	-3.64	0.0	0.0		
4,209.0	10.07	56.68	4,166.4	239.7	433.2	3.00	2.78	7.50	0.0	0.0		
4,305.0	11.03	63.48	4,260.8	248.4	448.4	1.64	1.00	7.08	0.0	0.0		
4,401.0	8.70	64.54	4,355.4	255.6	463.2	2.43	-2.43	1.10	0.0	0.0		
4,496.0	10.89	64.03	4,449.0	262.6	477.8	2.31	2.31	-0.54	0.0	0.0		
4,592.0	12.40	69.41	4,543.0	270.2	495.6	1.94	1.57	5.60	0.0	0.0		
4,688.0	11.62	76.54	4,636.9	276.1	514.6	1.74	-0.81	7.43	0.0	0.0		
4,784.0	9.82	55.12	4,731.3	283.1	530.7	4.52	-1.87	-22.31	0.0	0.0		
4,879.0	9.43	42.27	4,824.9	293.4	542.6	2.29	-0.41	-13.53	0.0	0.0		
4,975.0	8.53	39.74	4,919.8	304.7	552.5	1.02	-0.94	-2.64	0.0	0.0		
5,071.0	11.56	47.90	5,014.3	316.7	564.2	3.48	3.16	8.50	0.0	0.0		
5,166.0	13.09	47.95	5,107.1	330.3	579.2	1.61	1.61	0.05	0.0	0.0		
5,262.0	12.89	45.41	5,200.6	345.1	594.9	0.63	-0.21	-2.65	0.0	0.0		



Final PVA

<b>Company:</b>	Midland	<b>Local Co-ordinate Reference:</b>	Well #750H
<b>Project:</b>	Lea County, NM (NAD 83 NME)	<b>TVD Reference:</b>	KB = 30' @ 3542.0usft (H&P 534)
<b>Site:</b>	Ruthless 11 Fed Com	<b>MD Reference:</b>	KB = 30' @ 3542.0usft (H&P 534)
<b>Well:</b>	#750H	<b>North Reference:</b>	Grid
<b>Wellbore:</b>	OH	<b>Survey Calculation Method:</b>	Minimum Curvature
<b>Design:</b>	OH	<b>Database:</b>	PEDM

Survey											
MD (usft)	Inc (°)	Azi (azimuth) (°)	TVD (usft)	N/S (usft)	E/W (usft)	DLeg (°/100usft)	Build (°/100usft)	Turn (°/100usft)	High to Plan (usft)	Right to Plan (usft)	
5,357.0	12.53	53.84	5,293.3	358.6	610.8	1.99	-0.38	8.87	0.0	0.0	
5,453.0	12.45	53.30	5,387.1	370.9	627.5	0.15	-0.08	-0.56	0.0	0.0	
5,549.0	13.10	50.50	5,480.7	384.0	644.2	0.93	0.68	-2.92	0.0	0.0	
5,644.0	12.21	56.26	5,573.4	396.4	660.8	1.62	-0.94	6.06	0.0	0.0	
5,740.0	11.23	55.06	5,667.4	407.4	676.9	1.05	-1.02	-1.25	0.0	0.0	
5,836.0	11.75	53.34	5,761.4	418.6	692.4	0.65	0.54	-1.79	0.0	0.0	
5,932.0	11.09	49.62	5,855.5	430.4	707.3	1.03	-0.69	-3.87	0.0	0.0	
6,027.0	9.70	55.36	5,949.0	440.9	720.9	1.82	-1.46	6.04	0.0	0.0	
6,123.0	8.46	60.97	6,043.8	448.9	733.7	1.59	-1.29	5.84	0.0	0.0	
6,219.0	8.54	58.49	6,138.7	456.1	745.9	0.39	0.08	-2.58	0.0	0.0	
6,314.0	8.20	60.54	6,232.7	463.1	757.9	0.48	-0.36	2.16	0.0	0.0	
6,410.0	7.98	58.44	6,327.8	470.0	769.5	0.38	-0.23	-2.19	0.0	0.0	
6,506.0	6.63	63.67	6,423.0	475.9	780.1	1.57	-1.41	5.45	0.0	0.0	
6,602.0	3.90	64.32	6,518.6	479.8	788.0	2.84	-2.84	0.68	0.0	0.0	
6,697.0	3.25	56.29	6,613.4	482.7	793.2	0.86	-0.68	-8.45	0.0	0.0	
6,793.0	2.44	90.42	6,709.3	484.2	797.5	1.92	-0.84	35.55	0.0	0.0	
6,889.0	2.68	103.84	6,805.2	483.6	801.7	0.67	0.25	13.98	0.0	0.0	
6,985.0	1.27	113.66	6,901.1	482.7	804.9	1.51	-1.47	10.23	0.0	0.0	
7,081.0	0.48	186.06	6,997.1	481.8	805.8	1.26	-0.82	75.42	0.0	0.0	
7,176.0	0.74	203.50	7,092.1	480.9	805.5	0.33	0.27	18.36	0.0	0.0	
7,272.0	0.92	285.78	7,188.1	480.5	804.5	1.15	0.19	85.71	0.0	0.0	
7,368.0	1.30	298.40	7,284.1	481.2	802.8	0.47	0.40	13.15	0.0	0.0	
7,464.0	1.05	265.19	7,380.1	481.7	801.0	0.74	-0.26	-34.59	0.0	0.0	
7,559.0	1.23	259.52	7,475.0	481.4	799.1	0.22	0.19	-5.97	0.0	0.0	
7,655.0	1.07	235.40	7,571.0	480.7	797.4	0.53	-0.17	-25.12	0.0	0.0	
7,751.0	1.01	231.80	7,667.0	479.7	796.0	0.09	-0.06	-3.75	0.0	0.0	
7,847.0	1.15	246.26	7,763.0	478.8	794.4	0.32	0.15	15.06	0.0	0.0	



Final PVA

<b>Company:</b>	Midland	<b>Local Co-ordinate Reference:</b>	Well #750H
<b>Project:</b>	Lea County, NM (NAD 83 NME)	<b>TVD Reference:</b>	KB = 30' @ 3542.0usft (H&P 534)
<b>Site:</b>	Ruthless 11 Fed Com	<b>MD Reference:</b>	KB = 30' @ 3542.0usft (H&P 534)
<b>Well:</b>	#750H	<b>North Reference:</b>	Grid
<b>Wellbore:</b>	OH	<b>Survey Calculation Method:</b>	Minimum Curvature
<b>Design:</b>	OH	<b>Database:</b>	PEDM

Survey											
MD (usft)	Inc (°)	Azi (azimuth) (°)	TVD (usft)	N/S (usft)	E/W (usft)	DLeg (°/100usft)	Build (°/100usft)	Turn (°/100usft)	High to Plan (usft)	Right to Plan (usft)	
7,942.0	0.98	253.10	7,858.0	478.2	792.8	0.22	-0.18	7.20	0.0	0.0	
8,038.0	0.89	236.74	7,954.0	477.5	791.4	0.29	-0.09	-17.04	0.0	0.0	
8,133.0	1.06	216.50	8,048.9	476.4	790.2	0.40	0.18	-21.31	0.0	0.0	
8,229.0	1.66	220.08	8,144.9	474.6	788.8	0.63	0.62	3.73	0.0	0.0	
8,325.0	0.50	199.68	8,240.9	473.2	787.8	1.25	-1.21	-21.25	0.0	0.0	
8,420.0	0.42	155.00	8,335.9	472.5	787.8	0.38	-0.08	-47.03	0.0	0.0	
8,516.0	1.05	200.30	8,431.9	471.3	787.6	0.85	0.66	47.19	0.0	0.0	
8,612.0	1.10	224.73	8,527.9	469.8	786.7	0.48	0.05	25.45	0.0	0.0	
8,708.0	1.44	234.87	8,623.8	468.5	785.0	0.42	0.35	10.56	0.0	0.0	
8,803.0	0.30	315.16	8,718.8	468.0	783.9	1.50	-1.20	84.52	0.0	0.0	
8,899.0	0.72	357.64	8,814.8	468.8	783.7	0.56	0.44	44.25	0.0	0.0	
8,994.0	0.77	342.86	8,909.8	470.0	783.5	0.21	0.05	-15.56	0.0	0.0	
9,090.0	1.46	326.03	9,005.8	471.6	782.6	0.79	0.72	-17.53	0.0	0.0	
9,186.0	0.89	315.29	9,101.8	473.1	781.4	0.63	-0.59	-11.19	0.0	0.0	
9,281.0	1.08	256.37	9,196.8	473.5	780.0	1.03	0.20	-62.02	0.0	0.0	
9,377.0	1.52	264.05	9,292.8	473.1	777.9	0.49	0.46	8.00	0.0	0.0	
9,473.0	2.18	249.98	9,388.7	472.4	774.9	0.83	0.69	-14.66	0.0	0.0	
9,568.0	0.30	22.11	9,483.7	472.0	773.3	2.52	-1.98	139.08	0.0	0.0	
9,664.0	0.89	23.05	9,579.7	472.9	773.7	0.61	0.61	0.98	0.0	0.0	
9,760.0	0.75	35.29	9,675.7	474.1	774.3	0.23	-0.15	12.75	0.0	0.0	
9,855.0	0.91	30.95	9,770.7	475.2	775.1	0.18	0.17	-4.57	0.0	0.0	
9,951.0	0.61	17.31	9,866.6	476.4	775.6	0.36	-0.31	-14.21	0.0	0.0	
10,046.0	0.19	40.07	9,961.6	477.0	775.9	0.46	-0.44	23.96	0.0	0.0	
10,142.0	0.36	2.80	10,057.6	477.4	776.0	0.25	0.18	-38.82	0.0	0.0	
10,238.0	0.31	91.42	10,153.6	477.7	776.2	0.49	-0.05	92.31	0.0	0.0	
10,334.0	0.84	208.55	10,249.6	477.1	776.2	1.06	0.55	122.01	0.0	0.0	
10,429.0	1.00	202.22	10,344.6	475.7	775.5	0.20	0.17	-6.66	0.0	0.0	



Final PVA

<b>Company:</b>	Midland	<b>Local Co-ordinate Reference:</b>	Well #750H
<b>Project:</b>	Lea County, NM (NAD 83 NME)	<b>TVD Reference:</b>	KB = 30' @ 3542.0usft (H&P 534)
<b>Site:</b>	Ruthless 11 Fed Com	<b>MD Reference:</b>	KB = 30' @ 3542.0usft (H&P 534)
<b>Well:</b>	#750H	<b>North Reference:</b>	Grid
<b>Wellbore:</b>	OH	<b>Survey Calculation Method:</b>	Minimum Curvature
<b>Design:</b>	OH	<b>Database:</b>	PEDM

Survey												
MD (usft)	Inc (°)	Azi (azimuth) (°)	TVD (usft)	N/S (usft)	E/W (usft)	DLeg (°/100usft)	Build (°/100usft)	Turn (°/100usft)	High to Plan (usft)	Right to Plan (usft)		
10,525.0	1.50	197.62	10,440.6	473.7	774.8	0.53	0.52	-4.79	0.0	0.0		
10,621.0	1.95	183.66	10,536.6	470.9	774.3	0.64	0.47	-14.54	0.0	0.0		
10,716.0	2.01	188.24	10,631.5	467.6	774.0	0.18	0.06	4.82	0.0	0.0		
10,812.0	2.09	202.84	10,727.4	464.4	773.1	0.55	0.08	15.21	0.0	0.0		
10,908.0	2.99	186.24	10,823.3	460.3	772.1	1.20	0.94	-17.29	0.0	0.0		
11,003.0	2.32	198.57	10,918.2	456.0	771.2	0.92	-0.71	12.98	0.0	0.0		
11,099.0	1.44	247.54	11,014.2	453.7	769.5	1.82	-0.92	51.01	0.0	0.0		
11,195.0	3.78	236.24	11,110.1	451.4	765.8	2.48	2.44	-11.77	0.0	0.0		
11,290.0	3.77	219.27	11,204.9	447.3	761.2	1.17	-0.01	-17.86	0.0	0.0		
11,386.0	3.07	217.25	11,300.7	442.8	757.6	0.74	-0.73	-2.10	0.0	0.0		
11,482.0	1.15	254.19	11,396.7	440.5	755.1	2.35	-2.00	38.48	0.0	0.0		
11,577.0	1.60	308.76	11,491.6	441.1	753.2	1.39	0.47	57.44	0.0	0.0		
11,673.0	1.11	263.23	11,587.6	441.8	751.2	1.19	-0.51	-47.43	0.0	0.0		
11,769.0	0.91	271.04	11,683.6	441.7	749.5	0.25	-0.21	8.14	0.0	0.0		
11,865.0	0.52	280.42	11,779.6	441.8	748.4	0.42	-0.41	9.77	0.0	0.0		
11,960.0	0.52	255.51	11,874.6	441.8	747.5	0.24	0.00	-26.22	0.0	0.0		
12,056.0	1.16	242.00	11,970.6	441.2	746.2	0.69	0.67	-14.07	0.0	0.0		
12,151.0	1.77	254.38	12,065.5	440.3	744.0	0.72	0.64	13.03	0.0	0.0		
12,247.0	2.61	249.21	12,161.5	439.2	740.5	0.90	0.87	-5.39	0.0	0.0		
12,342.0	2.68	248.51	12,256.4	437.6	736.4	0.08	0.07	-0.74	0.0	0.0		
12,418.0	2.65	244.19	12,332.3	436.2	733.2	0.27	-0.04	-5.68	0.0	0.0		
12,477.0	2.24	229.70	12,391.2	434.8	731.1	1.25	-0.69	-24.56	0.2	0.3		
12,550.0	3.60	176.90	12,464.1	431.6	730.1	3.93	1.86	-72.34	-2.0	2.3		
<b>KOP (MD=12550.0')</b>												
12,572.0	4.31	169.72	12,486.1	430.1	730.3	3.93	3.23	-32.61	-3.5	2.9		
12,668.0	19.20	173.20	12,579.8	410.8	732.8	15.52	15.51	3.62	-16.4	7.6		



Final PVA

<b>Company:</b>	Midland	<b>Local Co-ordinate Reference:</b>	Well #750H
<b>Project:</b>	Lea County, NM (NAD 83 NME)	<b>TVD Reference:</b>	KB = 30' @ 3542.0usft (H&P 534)
<b>Site:</b>	Ruthless 11 Fed Com	<b>MD Reference:</b>	KB = 30' @ 3542.0usft (H&P 534)
<b>Well:</b>	#750H	<b>North Reference:</b>	Grid
<b>Wellbore:</b>	OH	<b>Survey Calculation Method:</b>	Minimum Curvature
<b>Design:</b>	OH	<b>Database:</b>	PEDM

Survey												
MD (usft)	Inc (°)	Azi (azimuth) (°)	TVD (usft)	N/S (usft)	E/W (usft)	DLeg (°/100usft)	Build (°/100usft)	Turn (°/100usft)	High to Plan (usft)	Right to Plan (usft)		
12,705.6	22.89	173.05	12,614.9	397.4	734.4	9.82	9.82	-0.39	-22.6	9.1		
<b>HL Crossing, MD:12705.6', TVD:12614.9',N/S:397.4', E/W:734.4', INC:22.89</b>												
12,763.0	28.53	172.90	12,666.6	372.7	737.5	9.82	9.82	-0.27	-30.7	11.3		
12,859.0	35.43	179.22	12,748.0	322.0	740.7	7.98	7.19	6.58	-37.1	15.2		
12,954.0	47.37	174.35	12,819.2	259.5	744.5	13.01	12.57	-5.13	-40.7	11.3		
13,050.0	64.12	170.36	12,873.0	181.2	755.3	17.78	17.45	-4.16	-46.9	12.6		
13,145.0	65.12	170.00	12,913.7	96.6	770.0	1.11	1.05	-0.38	-46.3	17.9		
13,241.0	74.58	174.00	12,946.8	7.5	782.4	10.60	9.85	4.17	-33.0	20.2		
13,337.0	82.09	175.51	12,966.2	-86.1	791.0	7.97	7.82	1.57	-16.2	16.7		
13,432.0	87.35	177.94	12,974.9	-180.5	796.4	6.09	5.54	2.56	-7.3	15.3		
13,528.0	91.53	181.75	12,975.8	-276.5	796.6	5.89	4.35	3.97	-6.1	14.2		
13,624.0	90.24	181.83	12,974.4	-372.4	793.6	1.35	-1.34	0.08	-7.3	10.6		
13,719.0	89.06	182.52	12,974.9	-467.3	790.0	1.44	-1.24	0.73	-6.4	6.4		
13,815.0	89.01	183.93	12,976.6	-563.2	784.6	1.47	-0.05	1.47	-4.5	0.4		
13,910.0	88.56	180.11	12,978.6	-658.1	781.3	4.05	-0.47	-4.02	-2.2	-3.5		
14,006.0	88.28	179.57	12,981.2	-754.0	781.5	0.63	-0.29	-0.56	0.7	-3.9		
14,102.0	89.71	177.32	12,982.9	-850.0	784.1	2.78	1.49	-2.34	2.7	-1.8		
14,197.0	88.19	174.75	12,984.6	-944.7	790.7	3.14	-1.60	-2.71	4.7	4.1		
14,292.0	95.12	178.16	12,981.9	-1,039.4	796.6	8.13	7.29	3.59	2.3	9.4		
14,388.0	93.01	179.43	12,975.1	-1,135.1	798.6	2.56	-2.20	1.32	-4.2	10.9		
14,483.0	94.34	180.45	12,969.0	-1,229.9	798.7	1.76	1.40	1.07	-10.0	10.4		
14,579.0	87.33	181.08	12,967.6	-1,325.9	797.4	7.33	-7.30	0.66	-11.1	8.5		
14,675.0	89.45	183.54	12,970.3	-1,421.7	793.5	3.38	2.21	2.56	-8.2	4.1		
14,770.0	88.61	183.83	12,971.9	-1,516.5	787.4	0.94	-0.88	0.31	-6.3	-2.6		
14,866.0	90.32	182.27	12,972.8	-1,612.4	782.3	2.41	1.78	-1.62	-5.1	-8.3		
14,961.0	90.60	182.93	12,972.1	-1,707.3	778.0	0.75	0.29	0.69	-5.6	-13.2		
15,057.0	90.38	178.76	12,971.2	-1,803.2	776.6	4.35	-0.23	-4.34	-6.1	-15.2		



Final PVA

**Company:** Midland  
**Project:** Lea County, NM (NAD 83 NME)  
**Site:** Ruthless 11 Fed Com  
**Well:** #750H  
**Wellbore:** OH  
**Design:** OH

**Local Co-ordinate Reference:** Well #750H  
**TVD Reference:** KB = 30' @ 3542.0usft (H&P 534)  
**MD Reference:** KB = 30' @ 3542.0usft (H&P 534)  
**North Reference:** Grid  
**Survey Calculation Method:** Minimum Curvature  
**Database:** PEDM

Survey												
MD (usft)	Inc (°)	Azi (azimuth) (°)	TVD (usft)	N/S (usft)	E/W (usft)	DLeg (°/100usft)	Build (°/100usft)	Turn (°/100usft)	High to Plan (usft)	Right to Plan (usft)		
15,152.0	91.81	179.32	12,969.4	-1,898.2	778.2	1.62	1.51	0.59	-7.6	-14.2		
15,248.0	90.32	178.57	12,967.6	-1,994.2	780.0	1.74	-1.55	-0.78	-9.1	-13.0		
15,344.0	88.87	176.62	12,968.3	-2,090.1	784.0	2.53	-1.51	-2.03	-8.1	-9.6		
15,439.0	89.68	177.48	12,969.5	-2,184.9	788.9	1.24	0.85	0.91	-6.6	-5.3		
15,535.0	93.46	179.24	12,966.9	-2,280.8	791.6	4.34	3.94	1.83	-9.0	-3.1		
15,630.0	89.73	180.18	12,964.2	-2,375.8	792.1	4.05	-3.93	0.99	-11.3	-3.2		
15,726.0	86.90	179.48	12,967.1	-2,471.7	792.4	3.04	-2.95	-0.73	-8.2	-3.5		
15,822.0	92.43	181.18	12,967.6	-2,567.7	791.8	6.03	5.76	1.77	-7.4	-4.7		
15,917.0	91.70	182.01	12,964.2	-2,662.6	789.2	1.16	-0.77	0.87	-10.5	-7.9		
16,013.0	89.90	181.22	12,962.9	-2,758.5	786.5	2.05	-1.87	-0.82	-11.6	-11.2		
16,108.0	90.69	181.45	12,962.4	-2,853.5	784.3	0.87	0.83	0.24	-11.8	-14.0		
16,204.0	91.64	181.76	12,960.4	-2,949.5	781.6	1.04	0.99	0.32	-13.4	-17.3		
16,299.0	89.93	178.53	12,959.1	-3,044.4	781.3	3.85	-1.80	-3.40	-14.4	-18.1		
16,395.0	89.62	179.06	12,959.5	-3,140.4	783.4	0.64	-0.32	0.55	-13.8	-16.7		
16,491.0	88.59	178.74	12,961.0	-3,236.4	785.2	1.12	-1.07	-0.33	-12.0	-15.4		
16,587.0	88.11	178.65	12,963.8	-3,332.3	787.4	0.51	-0.50	-0.09	-8.9	-13.8		
16,682.0	89.59	179.33	12,965.7	-3,427.3	789.1	1.71	1.56	0.72	-6.7	-12.7		
16,778.0	90.38	178.78	12,965.7	-3,523.3	790.6	1.00	0.82	-0.57	-6.4	-11.7		
16,874.0	91.67	178.63	12,964.0	-3,619.2	792.8	1.35	1.34	-0.16	-7.8	-10.1		
16,970.0	93.55	178.16	12,958.4	-3,742.0	796.3	1.58	1.53	-0.38	-13.1	-7.4		
17,093.0	91.53	179.10	12,954.1	-3,837.9	798.5	2.32	-2.10	0.98	-17.0	-5.7		
17,188.0	90.04	180.22	12,952.8	-3,932.9	799.1	1.96	-1.57	1.18	-18.0	-5.8		
17,284.0	88.36	180.54	12,954.2	-4,028.9	798.5	1.78	-1.75	0.33	-16.4	-7.0		
17,380.0	88.36	181.12	12,956.9	-4,124.8	797.1	0.60	0.00	0.60	-13.4	-9.0		
17,476.0	88.47	181.30	12,959.6	-4,220.8	795.1	0.22	0.11	0.19	-10.4	-11.6		
17,571.0	88.39	181.00	12,962.2	-4,315.7	793.2	0.33	-0.08	-0.32	-7.2	-14.1		
17,667.0	88.13	180.64	12,965.1	-4,411.7	791.8	0.46	-0.27	-0.37	-3.6	-16.0		



Final PVA

<b>Company:</b>	Midland	<b>Local Co-ordinate Reference:</b>	Well #750H
<b>Project:</b>	Lea County, NM (NAD 83 NME)	<b>TVD Reference:</b>	KB = 30' @ 3542.0usft (H&P 534)
<b>Site:</b>	Ruthless 11 Fed Com	<b>MD Reference:</b>	KB = 30' @ 3542.0usft (H&P 534)
<b>Well:</b>	#750H	<b>North Reference:</b>	Grid
<b>Wellbore:</b>	OH	<b>Survey Calculation Method:</b>	Minimum Curvature
<b>Design:</b>	OH	<b>Database:</b>	PEDM

Survey												
MD (usft)	Inc (°)	Azi (azimuth) (°)	TVD (usft)	N/S (usft)	E/W (usft)	DLeg (°/100usft)	Build (°/100usft)	Turn (°/100usft)	High to Plan (usft)	Right to Plan (usft)		
17,763.0	86.87	180.48	12,969.3	-4,507.6	790.8	1.32	-1.31	-0.17	1.3	-17.6		
17,859.0	87.91	180.56	12,973.6	-4,603.5	790.0	1.09	1.08	0.08	6.3	-19.0		
17,955.0	90.69	180.50	12,974.8	-4,699.4	789.1	2.90	2.90	-0.06	8.2	-20.5		
18,050.0	90.69	179.52	12,973.7	-4,794.4	789.1	1.03	0.00	-1.03	7.7	-21.1		
18,146.0	90.32	179.59	12,972.8	-4,890.4	789.8	0.39	-0.39	0.07	7.5	-21.0		
18,242.0	92.31	179.42	12,970.6	-4,986.4	790.6	2.08	2.07	-0.18	6.0	-20.7		
18,338.0	91.02	178.90	12,967.8	-5,082.3	792.0	1.45	-1.34	-0.54	3.9	-19.9		
18,433.0	92.23	178.68	12,965.1	-5,177.3	794.1	1.29	1.27	-0.23	1.8	-18.5		
18,529.0	94.48	178.99	12,959.5	-5,273.1	796.0	2.37	2.34	0.32	-3.1	-17.1		
18,626.0	91.56	178.40	12,954.4	-5,369.9	798.2	3.07	-3.01	-0.61	-7.6	-15.5		
18,721.0	90.80	177.38	12,952.4	-5,464.8	801.7	1.34	-0.80	-1.07	-8.9	-12.6		
18,817.0	90.77	177.33	12,951.1	-5,560.7	806.1	0.06	-0.03	-0.05	-9.5	-8.8		
18,912.0	91.69	178.16	12,949.1	-5,655.6	809.9	1.30	0.97	0.87	-10.9	-5.6		
19,008.0	89.59	177.83	12,948.0	-5,751.5	813.2	2.21	-2.19	-0.34	-11.3	-2.8		
19,104.0	89.82	178.69	12,948.5	-5,847.5	816.1	0.93	0.24	0.90	-10.1	-0.5		
19,200.0	89.79	179.10	12,948.8	-5,943.5	818.0	0.43	-0.03	0.43	-9.1	0.7		
19,296.0	89.73	179.49	12,949.2	-6,039.5	819.2	0.41	-0.06	0.41	-8.0	1.3		
19,391.0	90.24	179.52	12,949.3	-6,134.5	820.0	0.54	0.54	0.03	-7.4	1.6		
19,487.0	90.41	179.67	12,948.7	-6,230.5	820.7	0.24	0.18	0.16	-7.2	1.6		
19,583.0	90.13	179.94	12,948.3	-6,326.5	821.0	0.41	-0.29	0.28	-7.0	1.4		
19,679.0	90.35	179.87	12,947.9	-6,422.5	821.2	0.24	0.23	-0.07	-6.7	0.9		
19,870.0	90.24	179.81	12,946.9	-6,613.5	821.7	0.07	-0.06	-0.03	-6.4	0.3		
20,062.0	90.52	180.06	12,945.6	-6,805.5	821.9	0.20	0.15	0.13	-6.3	-0.7		
20,157.0	90.15	180.38	12,945.1	-6,900.5	821.5	0.51	-0.39	0.34	-6.2	-1.6		
20,253.0	90.27	180.57	12,944.7	-6,996.4	820.8	0.23	0.12	0.20	-5.9	-3.0		
20,348.0	90.38	179.82	12,944.2	-7,091.4	820.4	0.80	0.12	-0.79	-5.8	-3.9		
20,444.0	90.27	179.84	12,943.6	-7,187.4	820.7	0.12	-0.11	0.02	-5.5	-4.2		



Final PVA

**Company:** Midland  
**Project:** Lea County, NM (NAD 83 NME)  
**Site:** Ruthless 11 Fed Com  
**Well:** #750H  
**Wellbore:** OH  
**Design:** OH

**Local Co-ordinate Reference:** Well #750H  
**TVD Reference:** KB = 30' @ 3542.0usft (H&P 534)  
**MD Reference:** KB = 30' @ 3542.0usft (H&P 534)  
**North Reference:** Grid  
**Survey Calculation Method:** Minimum Curvature  
**Database:** PEDM

Survey												
MD (usft)	Inc (°)	Azi (azimuth) (°)	TVD (usft)	N/S (usft)	E/W (usft)	DLeg (°/100usft)	Build (°/100usft)	Turn (°/100usft)	High to Plan (usft)	Right to Plan (usft)		
20,539.0	90.71	179.69	12,942.8	-7,282.4	821.1	0.49	0.46	-0.16	-5.5	-4.4		
20,635.0	90.85	179.64	12,941.5	-7,378.4	821.7	0.15	0.15	-0.05	-5.9	-4.4		
20,730.0	90.69	179.35	12,940.2	-7,473.4	822.5	0.35	-0.17	-0.31	-6.4	-4.2		
20,826.0	90.80	179.62	12,939.0	-7,569.4	823.4	0.30	0.11	0.28	-6.8	-3.9		
20,922.0	90.94	179.92	12,937.5	-7,665.4	823.8	0.34	0.15	0.31	-7.4	-4.1		
21,017.0	90.91	179.80	12,936.0	-7,760.4	824.0	0.13	-0.03	-0.13	-8.1	-4.5		
21,113.0	90.29	179.40	12,935.0	-7,856.4	824.7	0.77	-0.65	-0.42	-8.3	-4.4		
21,209.0	90.91	179.73	12,934.0	-7,952.4	825.4	0.73	0.65	0.34	-8.5	-4.2		
21,304.0	91.67	180.07	12,931.8	-8,047.3	825.5	0.88	0.80	0.36	-9.8	-4.7		
21,400.0	88.84	179.95	12,931.4	-8,143.3	825.5	2.95	-2.95	-0.12	-9.4	-5.3		
21,496.0	87.69	178.96	12,934.3	-8,239.3	826.4	1.58	-1.20	-1.03	-5.6	-4.9		
21,592.0	87.10	178.76	12,938.7	-8,335.2	828.4	0.65	-0.61	-0.21	-0.4	-3.6		
21,687.0	90.83	179.34	12,940.4	-8,430.1	829.9	3.97	3.93	0.61	2.1	-2.6		
21,783.0	90.91	179.56	12,938.9	-8,526.1	830.8	0.24	0.08	0.23	1.5	-2.3		
21,879.0	91.55	180.18	12,936.9	-8,622.1	831.1	0.93	0.67	0.65	0.3	-2.7		
21,974.0	91.05	180.27	12,934.7	-8,717.0	830.7	0.53	-0.53	0.09	-1.1	-3.6		
22,070.0	90.41	179.72	12,933.5	-8,813.0	830.7	0.88	-0.67	-0.57	-1.5	-4.2		
22,166.0	89.68	179.24	12,933.4	-8,909.0	831.6	0.91	-0.76	-0.50	-0.7	-3.9		
22,262.0	89.96	179.04	12,933.7	-9,005.0	833.0	0.36	0.29	-0.21	0.4	-3.1		
22,358.0	89.48	178.50	12,934.2	-9,101.0	835.1	0.75	-0.50	-0.56	1.8	-1.6		
22,453.0	89.37	178.61	12,935.1	-9,196.0	837.5	0.16	-0.12	0.12	3.5	0.2		
22,549.0	90.55	179.06	12,935.2	-9,291.9	839.4	1.32	1.23	0.47	4.4	1.6		
22,645.0	90.55	178.43	12,934.3	-9,387.9	841.5	0.66	0.00	-0.66	4.3	3.1		
22,740.0	90.38	178.03	12,933.5	-9,482.9	844.5	0.46	-0.18	-0.42	4.4	5.5		
22,836.0	90.01	178.37	12,933.2	-9,578.8	847.5	0.52	-0.39	0.35	4.9	7.9		
22,931.0	89.62	177.88	12,933.5	-9,673.8	850.6	0.66	-0.41	-0.52	6.0	10.4		
23,027.0	89.31	177.81	12,934.4	-9,769.7	854.2	0.33	-0.32	-0.07	7.8	13.4		



Final PVA

<b>Company:</b>	Midland	<b>Local Co-ordinate Reference:</b>	Well #750H
<b>Project:</b>	Lea County, NM (NAD 83 NME)	<b>TVD Reference:</b>	KB = 30' @ 3542.0usft (H&P 534)
<b>Site:</b>	Ruthless 11 Fed Com	<b>MD Reference:</b>	KB = 30' @ 3542.0usft (H&P 534)
<b>Well:</b>	#750H	<b>North Reference:</b>	Grid
<b>Wellbore:</b>	OH	<b>Survey Calculation Method:</b>	Minimum Curvature
<b>Design:</b>	OH	<b>Database:</b>	PEDM

MD (usft)	Inc (°)	Azi (azimuth) (°)	TVD (usft)	N/S (usft)	E/W (usft)	DLeg (°/100usft)	Build (°/100usft)	Turn (°/100usft)	High to Plan (usft)	Right to Plan (usft)
23,122.0	88.98	177.46	12,935.8	-9,864.6	858.1	0.51	-0.35	-0.37	10.0	16.8
<b>Final MWD Survey (MD=23122.0')</b>										
23,212.0	88.98	177.46	12,937.4	-9,954.5	862.1	0.00	0.00	0.00	12.4	20.2
<b>Final Projection to Bit (MD=23212.0')</b>										

Measured Depth (usft)	Vertical Depth (usft)	Local Coordinates		Comment
		+N/-S (usft)	+E/-W (usft)	
12,550.0	12,464.1	431.6	730.1	KOP (MD=12550.0')
12,705.6	12,614.9	397.4	734.4	HL Crossing, MD:12705.6', TVD:12614.9', N/S:397.4', E/W:734.4', INC:22.89
23,122.0	12,935.8	-9,864.6	858.1	Final MWD Survey (MD=23122.0')
23,212.0	12,937.4	-9,954.5	862.1	Final Projection to Bit (MD=23212.0')

Checked By: \_\_\_\_\_ Approved By: \_\_\_\_\_ Date: \_\_\_\_\_

I CERTIFY THIS SURVEY TO BE TRUE AND CORRECT TO THE BEST OF MY BELIEF AND KNOWLEDGE  
 KAY MADDOX 12/12/2022

Intent  As Drilled

API #									
Operator Name:					Property Name:				Well Number

Kick Off Point (KOP)

UL	Section	Township	Range	Lot	Feet	From N/S	Feet	From E/W	County
Latitude					Longitude				NAD

First Take Point (FTP)

UL	Section	Township	Range	Lot	Feet	From N/S	Feet	From E/W	County
Latitude					Longitude				NAD

Last Take Point (LTP)

UL	Section	Township	Range	Lot	Feet	From N/S	Feet	From E/W	County
Latitude					Longitude				NAD

Is this well the defining well for the Horizontal Spacing Unit?

Is this well an infill well?

If infill is yes please provide API if available, Operator Name and well number for Defining well for Horizontal Spacing Unit.

API #									
Operator Name:					Property Name:				Well Number

KZ 06/29/2018

Submit To Appropriate District Office Two Copies District I 1625 N. French Dr., Hobbs, NM 88240 District II 811 S. First St., Artesia, NM 88210 District III 1000 Rio Brazos Rd., Aztec, NM 87410 District IV 1220 S. St. Francis Dr., Santa Fe, NM 87505	<b>State of New Mexico</b> <b>Energy, Minerals and Natural Resources</b>  <b>Oil Conservation Division</b> <b>1220 South St. Francis Dr.</b> <b>Santa Fe, NM 87505</b>	<b>Form C-105</b> Revised August 1, 2011
		1. WELL API NO. <b>30-025-48879</b>
		2. Type of Lease <input type="checkbox"/> STATE <input type="checkbox"/> FEE <input checked="" type="checkbox"/> FED/INDIAN
		3. State Oil & Gas Lease No.

**WELL COMPLETION OR RECOMPLETION REPORT AND LOG**

4. Reason for filing: <input checked="" type="checkbox"/> <b>COMPLETION REPORT</b> (Fill in boxes #1 through #31 for State and Fee wells only)  <input type="checkbox"/> <b>C-144 CLOSURE ATTACHMENT</b> (Fill in boxes #1 through #9, #15 Date Rig Released and #32 and/or #33; attach this and the plat to the C-144 closure report in accordance with 19.15.17.13.K NMAC)	5. Lease Name or Unit Agreement Name <b>RUTHLESS 11 FEDERAL COM</b>  6. Well Number: <b>750H</b>
---	--

7. Type of Completion:  
 NEW WELL     WORKOVER     DEEPENING     PLUGBACK     DIFFERENT RESERVOIR     OTHER

8. Name of Operator    **EOG RESOURCES INC**    9. OGRID    **7377**

10. Address of Operator    **PO BOX 2267 MIDLAND, TEXAS 79702**    11. Pool name or Wildcat  
**WC025 G09 S253309P; UPPER WOLFCAMP**

12. Location	Unit Ltr	Section	Township	Range	Lot	Feet from the	N/S Line	Feet from the	E/W Line	County
<b>Surface:</b>	B	11	25S	32E		494	NORTH	1756	EAST	LEA
<b>BH:</b>	P	14	25S	32E		108	SOUTH	955	EAST	LEA

13. Date Spudded <b>07/10/2021</b>	14. Date T.D. Reached <b>09/02/2022</b>	15. Date Rig Released <b>09/04/2022</b>	16. Date Completed (Ready to Produce) <b>11/26/2022</b>	17. Elevations (DF and RKB, RT, GR, etc.) <b>3504' GL</b>
18. Total Measured Depth of Well <b>MD 23,212' TVD 12,937'</b>	19. Plug Back Measured Depth <b>MD 23,187' TVD 12,937'</b>	20. Was Directional Survey Made? <b>YES</b>	21. Type Electric and Other Logs Run <b>None</b>	

22. Producing Interval(s), of this completion - Top, Bottom, Name  
**WOLFCAMP 13,026 - 23,187'**

**23. CASING RECORD (Report all strings set in well)**

CASING SIZE	WEIGHT LB./FT.	DEPTH SET	HOLE SIZE	CEMENTING RECORD	AMOUNT PULLED
9 5/8"	40# J-55	1050'	12 1/4"	545 CL C/CIRC	
7 5/8"	29.7# ICYP110	12,460'	8 3/4"	1531 CL C & H /CIRC	
5 1/2"	20# HCP 110	23,194'	6 3/4"	1120 CL H TOC 10,733' /CBL	

24. LINER RECORD					25. TUBING RECORD		
SIZE	TOP	BOTTOM	SACKS CEMENT	SCREEN	SIZE	DEPTH SET	PACKER SET

26. Perforation record (interval, size, and number)  <b>13,026 - 23,187'    3 1/8", 2073 holes</b>	27. ACID, SHOT, FRACTURE, CEMENT, SQUEEZE, ETC. DEPTH INTERVAL    AMOUNT AND KIND MATERIAL USED <b>13,026 - 23,187'    FRAC W/24,909,410 lbs proppant, 463,347 bbls load fld</b>
--	--

**28. PRODUCTION**

Date First Production <b>11/26/2022</b>	Production Method ( <i>Flowing, gas lift, pumping - Size and type pump</i> ) <b>Flowing</b>	Well Status ( <i>Prod. or Shut-in</i> ) <b>Producing</b>
--	--	---

Date of Test <b>12/21/2022</b>	Hours Tested <b>24</b>	Choke Size <b>78</b>	Prod'n For Test Period	Oil - Bbl <b>1356</b>	Gas - MCF <b>9134</b>	Water - Bbl. <b>8785</b>	Gas - Oil Ratio <b>6734</b>
-----------------------------------	---------------------------	-------------------------	------------------------	--------------------------	--------------------------	-----------------------------	--------------------------------

Flow Tubing Press.	Casing Pressure <b>1818</b>	Calculated 24-Hour Rate	Oil - Bbl.	Gas - MCF	Water - Bbl.	Oil Gravity - API - ( <i>Corr.</i> ) <b>49</b>
--------------------	--------------------------------	-------------------------	------------	-----------	--------------	---

29. Disposition of Gas (*Sold, used for fuel, vented, etc.*)  
**SOLD**    30. Test Witnessed By

31. List Attachments  
**C-102, C-104, Directional Survey, H spacing**

32. If a temporary pit was used at the well, attach a plat with the location of the temporary pit.

33. If an on-site burial was used at the well, report the exact location of the on-site burial:  
 Latitude \_\_\_\_\_ Longitude \_\_\_\_\_ NAD 1927 1983

*I hereby certify that the information shown on both sides of this form is true and complete to the best of my knowledge and belief*

Printed

Signature    **Kay Maddox**    Name    **Kay Maddox**    Title    **Senior Regulatory Specialist**    Date    **12/22/2022**

E-mail Address    **kay\_maddox@eogresources.com**

# INSTRUCTIONS

This form is to be filed with the appropriate District Office of the Division not later than 20 days after the completion of any newly-drilled or deepened well and not later than 60 days after completion of closure. When submitted as a completion report, this shall be accompanied by one copy of all electrical and radio-activity logs run on the well and a summary of all special tests conducted, including drill stem tests. All depths reported shall be measured depths. In the case of directionally drilled wells, true vertical depths shall also be reported. For multiple completions, items 11, 12 and 26-31 shall be reported for each zone.

## INDICATE FORMATION TOPS IN CONFORMANCE WITH GEOGRAPHICAL SECTION OF STATE

Southeastern New Mexico		Northwestern New Mexico	
T. Anhy <u>Rustler 816'</u>	T. Canyon <u>BRUSHY 7254'</u>	T. Ojo Alamo _____	T. Penn A" _____
T. Salt <u>919'</u>	T. Strawn _____	T. Kirtland _____	T. Penn. "B" _____
B. Salt <u>4541'</u>	T. Atoka _____	T. Fruitland _____	T. Penn. "C" _____
T. Yates _____	T. Miss _____	T. Pictured Cliffs _____	T. Penn. "D" _____
T. 7 Rivers _____	T. Devonian _____	T. Cliff House _____	T. Leadville _____
T. Queen _____	T. Silurian _____	T. Menefee _____	T. Madison _____
T. Grayburg _____	T. Montoya _____	T. Point Lookout _____	T. Elbert _____
T. San Andres _____	T. Simpson _____	T. Mancos _____	T. McCracken _____
T. Glorieta _____	T. McKee _____	T. Gallup _____	T. Ignacio Otzte _____
T. Paddock _____	T. Ellenburger _____	Base Greenhorn _____	T. Granite _____
T. Blinebry _____	T. Gr. Wash _____	T. Dakota _____	
T. Tubb _____	T. Delaware Sand _____	T. Morrison _____	
T. Drinkard _____	T. Bone Springs _____	T. Todilto _____	
T. Abo _____	T. <u>1st BS Sand 9921'</u>	T. Entrada _____	
T. Wolfcamp <u>12,066'</u>	T. <u>2nd BS Sand 10,481'</u>	T. Wingate _____	
T. Penn _____	T. <u>3rd BS Sand 11,714'</u>	T. Chinle _____	
T. Cisco (Bough C) _____	T. _____	T. Permian _____	

### OIL OR GAS SANDS OR ZONES

No. 1, from.....to.....  
 No. 2, from.....to.....  
 No. 3, from.....to.....  
 No. 4, from.....to.....

### IMPORTANT WATER SANDS

Include data on rate of water inflow and elevation to which water rose in hole.

No. 1, from.....to.....feet.....  
 No. 2, from.....to.....feet.....  
 No. 3, from.....to.....feet.....

## LITHOLOGY RECORD (Attach additional sheet if necessary)

From	To	Thickness In Feet	Lithology	From	To	Thickness In Feet	Lithology

Sante Fe Main Office  
Phone: (505) 476-3441

General Information  
Phone: (505) 629-6116

Online Phone Directory  
<https://www.emnrd.nm.gov/ocd/contact-us>

**State of New Mexico**  
**Energy, Minerals and Natural Resources**  
**Oil Conservation Division**  
**1220 S. St Francis Dr.**  
**Santa Fe, NM 87505**

ACKNOWLEDGMENTS

Action 172566

**ACKNOWLEDGMENTS**

Operator: EOG RESOURCES INC 5509 Champions Drive Midland, TX 79706	OGRID: 7377
	Action Number: 172566
	Action Type: [C-104] Completion Packet (C-104C)

**ACKNOWLEDGMENTS**

<input checked="" type="checkbox"/>	I hereby certify that the required Water Use Report has been, or will be, submitted for this wells completion.
<input checked="" type="checkbox"/>	I hereby certify that the required FracFocus disclosure has been, or will be, submitted for this wells completion.

Sante Fe Main Office  
Phone: (505) 476-3441

General Information  
Phone: (505) 629-6116

Online Phone Directory  
<https://www.emnrd.nm.gov/ocd/contact-us>

**State of New Mexico**  
**Energy, Minerals and Natural Resources**  
**Oil Conservation Division**  
**1220 S. St Francis Dr.**  
**Santa Fe, NM 87505**

CONDITIONS

Action 172566

**CONDITIONS**

Operator: EOG RESOURCES INC 5509 Champions Drive Midland, TX 79706	OGRID: 7377
	Action Number: 172566
	Action Type: [C-104] Completion Packet (C-104C)

**CONDITIONS**

Created By	Condition	Condition Date
plmartinez	File 3160-4 Completion Report within 10 days of BLM approval.	3/6/2026