

Office
District I - (575) 393-6161
1625 N. French Dr., Hobbs, NM 88240
District II - (575) 748-1283
811 S. First St., Artesia, NM 88210
District III - (505) 334-6178
1000 Rio Brazos Rd., Aztec, NM 87410
District IV - (505) 476-3460
1220 S. St. Francis Dr., Santa Fe, NM 87505

State of New Mexico
Energy, Minerals and Natural Resources

Form C-103
Revised July 18, 2013

OIL CONSERVATION DIVISION
1220 South St. Francis Dr.
Santa Fe, NM 87505

WELL API NO. 30-005-60183
5. Indicate Type of Lease STATE [X] FEE []
6. State Oil & Gas Lease No.
7. Lease Name or Unit Agreement Name DOUBLE L QUEEN
8. Well Number #012
9. OGRID Number 269864
10. Pool name or Wildcat DOUBLE L;QUEEN (ASSOC)

SUNDRY NOTICES AND REPORTS ON WELLS
(DO NOT USE THIS FORM FOR PROPOSALS TO DRILL OR TO DEEPEN OR PLUG BACK TO A DIFFERENT RESERVOIR. USE "APPLICATION FOR PERMIT" (FORM C-101) FOR SUCH PROPOSALS.)
1. Type of Well: Oil Well [X] Gas Well [] Other []
2. Name of Operator CANYON E & P COMPANY
3. Address of Operator 251 O'Connor Ridge Blvd.Suite 265, Irving, TX 75038
4. Well Location
Unit Letter J: 1650 feet from the S line and 2310 feet from the E line
Section 25 Township 14S Range 29E NMPM Chaves
11. Elevation (Show whether DR, RKB, RT, GR, etc.)

12. Check Appropriate Box to Indicate Nature of Notice, Report or Other Data

NOTICE OF INTENTION TO:
PERFORM REMEDIAL WORK [] PLUG AND ABANDON []
TEMPORARILY ABANDON [] CHANGE PLANS []
PULL OR ALTER CASING [] MULTIPLE COMPL []
DOWNHOLE COMMINGLE []
CLOSED-LOOP SYSTEM []
OTHER: []
SUBSEQUENT REPORT OF:
REMEDIAL WORK [] ALTERING CASING []
COMMENCE DRILLING OPNS. [] P AND A [X]
CASING/CEMENT JOB []
OTHER: []

13. Describe proposed or completed operations. (Clearly state all pertinent details, and give pertinent dates, including estimated date of starting any proposed work). SEE RULE 19.15.7.14 NMAC. For Multiple Completions: Attach wellbore diagram of proposed completion or recompletion.

NMOCD X Drake has plugged this well in accordance with the attached documents and uploaded daily reports.

Move on location: 2-28-26
Move off location: 3-4-26

Spud Date: []

Rig Release Date: []

I hereby certify that the information above is true and complete to the best of my knowledge and belief.

SIGNATURE: Ethan Wakefield

TITLE: Authorized Representative

DATE 3-9-26

Type or print name: Ethan Wakefield

E-mail address: e.wakefield@dwsrigs.com

PHONE: 405-343-7736

For State Use Only

APPROVED BY: TITLE DATE

Conditions of Approval (if any):



Completed Wellbore Diagram

CANYON E&P COMPANY
DOUBLE L QUEEN UNIT #012
API: 30-005-60183
Chaves County, New Mexico

Surface Casing

8-5/8" 20# @ 296'
OH: 11"
150 SX

Formation

Anhydrite - 235'
T Salt - 297'
B Salt - 1093'
Yates - 1171'
7 Rivers - 1309'

Plug 3

SQ From Surface
Perforated at 364'
396' to Surface
127 sacks Type III Cement
Additional 25 Sacks for Cellar

Plug 2

Balanced Inside
1359' to 974'
385 foot plug
37 sacks Type III Cement

Plug 1

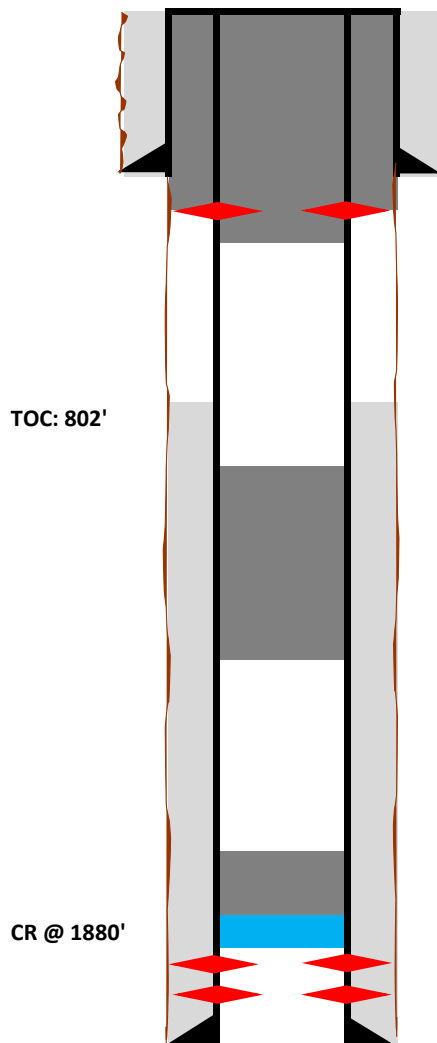
Above CR
1880' to 1766'
114 foot plug
10 sacks Type III Cement

Production Casing

5-1/2" 15# @ 1999'
OH: 7-7/8"
200 sx lite, 100 sx 50-50

Perforations

1923' to 1930'



Type III - 14.6 PPG, 1.37 cu-ft/sx

Plug Summary									
Plug #	Plug Type	Perfs	CR/CIBP Depth	Outside SQ Sxs	Inside Sxs	Class/Type	Bottom	Top	Tag Depth
1	Above CR		1880		10	III	1880	1773	1766
2	Balanced Inside				37	III	1359	933	974
3	SQ from surface	364		95	32	III	396	0	0
	Top off				25	III			Cellar



Figure 1: Top Off

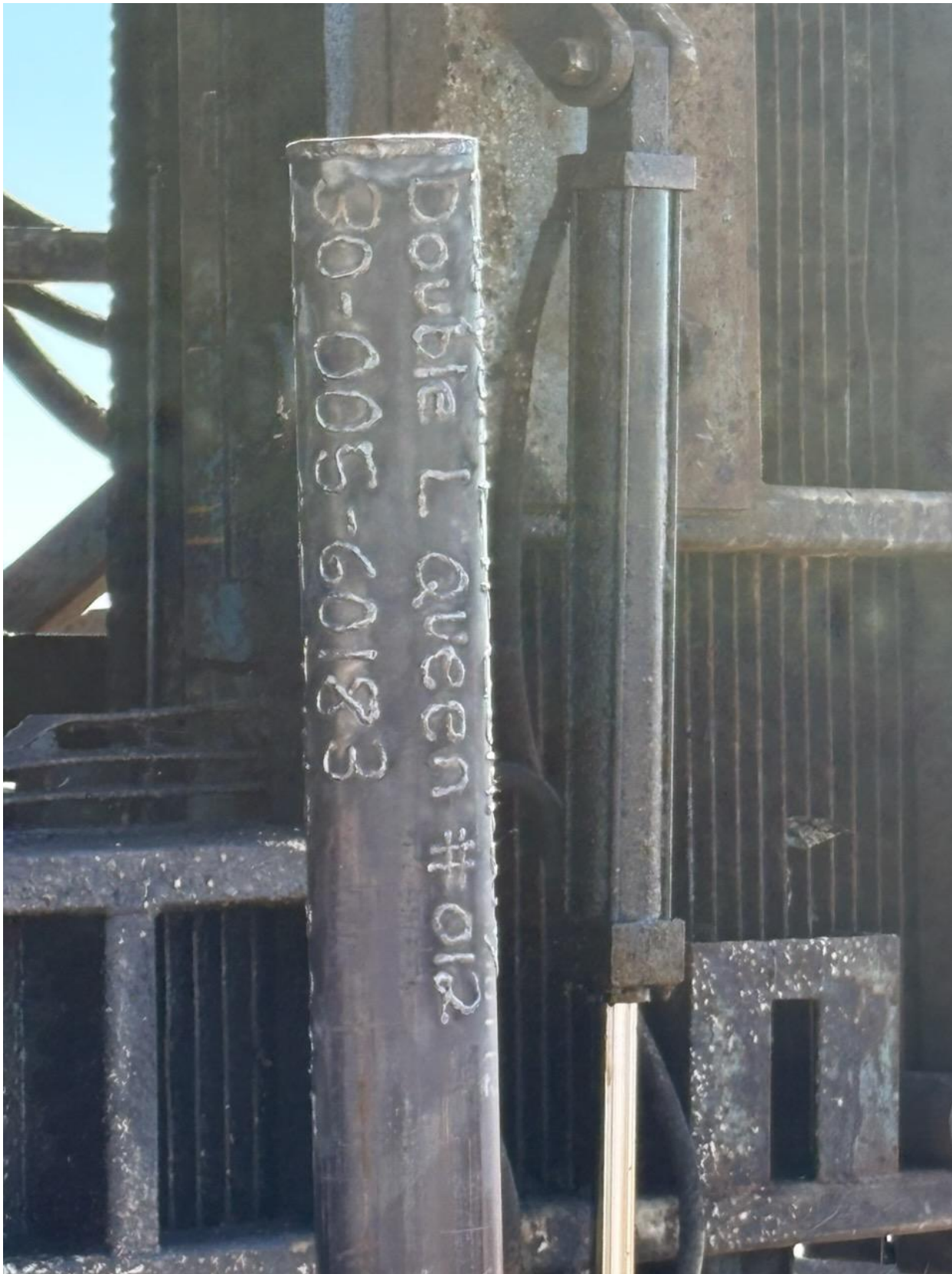


Figure 2: Marker

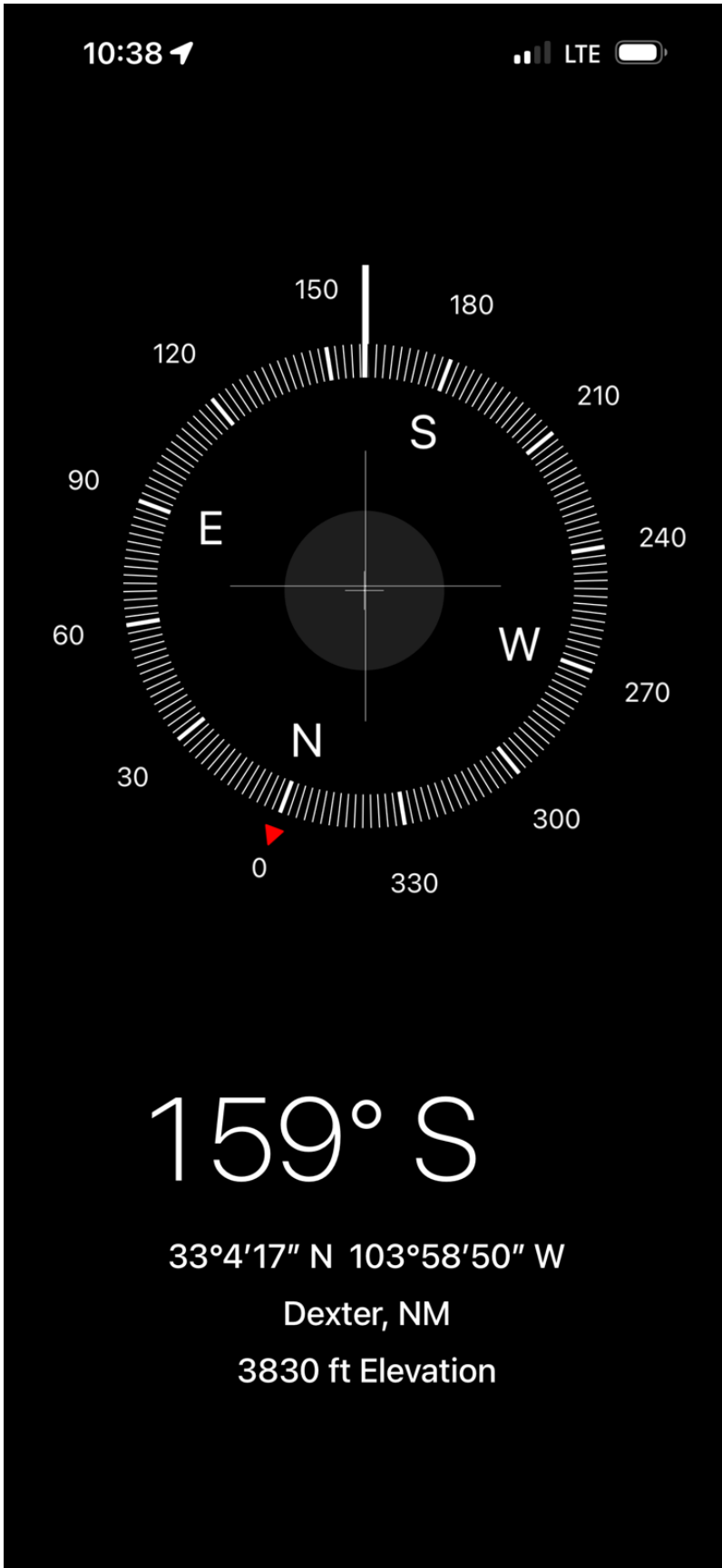


Figure 3: GPS



Figure 4: Cut Off

Sante Fe Main Office
Phone: (505) 476-3441

General Information
Phone: (505) 629-6116

Online Phone Directory
<https://www.emnrd.nm.gov/ocd/contact-us>

State of New Mexico
Energy, Minerals and Natural Resources
Oil Conservation Division
1220 S. St Francis Dr.
Santa Fe, NM 87505

DEFINITIONS

Action 561345

DEFINITIONS

Operator: J.A. Drake Well Service Inc. (OPG Vendor) 607 W. Pinon St Farmington, NM 87401	OGRID: 333581
	Action Number: 561345
	Action Type: [UF-OMA] Sub. Plugging (UF-OMA-C-103P)

DEFINITIONS

The OCD Mitigation Activity (OMA) forms are a subset of the OCD's forms exclusively designed for activities related to State of New Mexico's contracted evaluation, plugging, decommissioning, remediation, salvage and reclamation activities. Specifically, these forms are typically used where the OCD has acquired a hearing order allowing the OCD to perform mitigation activities on wells and associated facilities that no longer have an authorized or viable operator to perform the necessary work. These forms are not to be utilized for any other purpose.

Sante Fe Main Office
Phone: (505) 476-3441

General Information
Phone: (505) 629-6116

Online Phone Directory
<https://www.emnrd.nm.gov/ocd/contact-us>

State of New Mexico
Energy, Minerals and Natural Resources
Oil Conservation Division
1220 S. St Francis Dr.
Santa Fe, NM 87505

QUESTIONS

Action 561345

QUESTIONS

Operator: J.A. Drake Well Service Inc. (OPG Vendor) 607 W. Pinon St Farmington, NM 87401	OGRID: 333581
	Action Number: 561345
	Action Type: [UF-OMA] Sub. Plugging (UF-OMA-C-103P)

QUESTIONS

Prerequisites	
[OGRID] Well Operator	[269864] CANYON E & P COMPANY
[API] Well Name and Number	[30-005-60183] DOUBLE L QUEEN UNIT #012
Well Status	Plugged (not released)

Sante Fe Main Office
Phone: (505) 476-3441

General Information
Phone: (505) 629-6116

Online Phone Directory
<https://www.emnrd.nm.gov/ocd/contact-us>

State of New Mexico
Energy, Minerals and Natural Resources
Oil Conservation Division
1220 S. St Francis Dr.
Santa Fe, NM 87505

CONDITIONS

Action 561345

CONDITIONS

Operator: J.A. Drake Well Service Inc. (OPG Vendor) 607 W. Pinon St Farmington, NM 87401	OGRID: 333581
	Action Number: 561345
	Action Type: [UF-OMA] Sub. Plugging (UF-OMA-C-103P)

CONDITIONS

Created By	Condition	Condition Date
loren.diede	None	3/10/2026