

Submit Copy To Appropriate District
Office
District I - (575) 393-6161
1625 N. French Dr., Hobbs, NM 88240
District II - (575) 748-1283
811 S. First St., Artesia, NM 88210
District III - (505) 334-6178
1000 Rio Brazos Rd., Aztec, NM 87410
District IV - (505) 476-3460
1220 S. St. Francis Dr., Santa Fe, NM
87505

State of New Mexico
Energy, Minerals and Natural Resources

Form C-103
Revised July 18, 2013

OIL CONSERVATION DIVISION
1220 South St. Francis Dr.
Santa Fe, NM 87505

| |
|---|
| WELL API NO. 30-015-56898 |
| 5. Indicate Type of Lease STATE <input checked="" type="checkbox"/> FEE <input type="checkbox"/> |
| 6. State Oil & Gas Lease No. |
| 7. Lease Name or Unit Agreement Name CEDAR HILLS 15-16 STATE COM |
| 8. Well Number 335H |
| 9. OGRID Number 6137 |
| 10. Pool name or Wildcat CARLSBAD; BONE SPRING, EAST |
| 11. Elevation (Show whether DR, RKB, RT, GR, etc.) 3222.2 |

SUNDRY NOTICES AND REPORTS ON WELLS
(DO NOT USE THIS FORM FOR PROPOSALS TO DRILL OR TO DEEPEN OR PLUG BACK TO A DIFFERENT RESERVOIR. USE "APPLICATION FOR PERMIT" (FORM C-101) FOR SUCH PROPOSALS.)

1. Type of Well: Oil Well Gas Well Other

2. Name of Operator
DEVON ENERGY PRODUCTION COMPANY, LP

3. Address of Operator 333 W SHERIDAN AVE
OKLAHOMA CITY, OK 73102

4. Well Location
Unit Letter N : 618 feet from the SOUTH line and 1403 feet from the WEST line
Section 14 Township 21S Range 27E NMPM County EDDY

12. Check Appropriate Box to Indicate Nature of Notice, Report or Other Data

| | |
|--|--|
| NOTICE OF INTENTION TO: | SUBSEQUENT REPORT OF: |
| PERFORM REMEDIAL WORK <input type="checkbox"/> | REMEDIAL WORK <input type="checkbox"/> |
| TEMPORARILY ABANDON <input type="checkbox"/> | ALTERING CASING <input type="checkbox"/> |
| PULL OR ALTER CASING <input type="checkbox"/> | COMMENCE DRILLING OPNS. <input type="checkbox"/> |
| DOWNHOLE COMMINGLE <input type="checkbox"/> | P AND A <input type="checkbox"/> |
| CLOSED-LOOP SYSTEM <input type="checkbox"/> | CASING/CEMENT JOB <input type="checkbox"/> |
| OTHER: NAME CHANGE <input type="checkbox"/> | OTHER: <input type="checkbox"/> |

13. Describe proposed or completed operations. (Clearly state all pertinent details, and give pertinent dates, including estimated date of starting any proposed work). SEE RULE 19.15.7.14 NMAC. For Multiple Completions: Attach wellbore diagram of proposed completion or recompletion.

Devon Energy Production Company L.P. respectfully respectfully requests approval to add the alternate Drill Plan to the existing approved plan for the subject well. Devon would also like to request a variance for Break test and offline cementing in regards to intermediate and production casing. Please see attached drilling plans and variance.

Spud Date:

Rig Release Date:

I hereby certify that the information above is true and complete to the best of my knowledge and belief.

SIGNATURE Shandee Thomas TITLE REGULATORY PROFESSIONAL DATE 3/20/2026

Type or print name Shandee Thomas E-mail address: Shandee.Thomas@dvn.com PHONE: 405-552-7853

For State Use Only

APPROVED BY: _____ TITLE _____ DATE _____

Conditions of Approval (if any):

Devon Energy Annular Preventer Summary

1. Component and Preventer Compatibility Table

The table below, which covers the drilling and casing of the 10M MASP portion of the well, outlines the tubulars and the compatible preventers in use. This table, combined with the mud program, documents that two barriers to flow can be maintained at all times, independent of the rating of the annular preventer.

6-3/4" Production hole section, 10M requirement

| Component | OD | Preventer | RWP |
|-----------------------------|-----------|--------------------------------------|-----|
| Drillpipe | 4.5" | Fixed lower 4.5" Upper 4.5-7" VBR | 10M |
| HWDP | 4.5" | Fixed lower 4.5" Upper 4.5-7" VBR | 10M |
| Drill collars and MWD tools | 4.75" | Upper 4.5-7" VBR | 10M |
| Mud Motor | 4.75" | Upper 4.5-7" VBR | 10M |
| Production casing | 5.5" | Upper 4.5-7" VBR | 10M |
| ALL | 0-13-5/8" | Annular | 5M |
| Open-hole | - | Blind Rams | 10M |

VBR = Variable Bore Ram. Compatible range listed in chart.

2. Well Control Procedures

Well control procedures are specific to the rig equipment and the operation at the time the kick occurs. Below are the minimal high-level tasks prescribed to assure a proper shut-in while drilling, tripping, running casing, pipe out of the hole (open hole), and moving the BHA through the BOPs. The pressure at which control is swapped from the annular to another compatible ram is variable, but the operator will document in the submission their operating pressure limit. The operator may chose an operating pressure less than or equal to RWP, but in no case will it exceed the RWP of the annular preventer.

General Procedure While Drilling

1. Sound alarm (alert crew)
2. Space out drill string
3. Shut down pumps (stop pumps and rotary)
4. Shut-in Well (uppermost applicable BOP, typically annular preventer first. HCR and choke will already be in the closed position.)
5. Confirm shut-in
6. Notify toolpusher/company representative
7. Read and record the following:
 - a. SIDPP and SICP
 - b. Pit gain
 - c. Time
8. Regroup and identify forward plan
9. If pressure has built or is anticipated during the kill to reach the RWP of the annular preventer, confirm spacing and swap to the upper pipe ram.

Devon Energy Annular Preventer Summary

General Procedure While Tripping

1. Sound alarm (alert crew)
2. Stab full opening safety valve and close
3. Space out drill string
4. Shut-in (uppermost applicable BOP, typically annular preventer first. HCR and choke will already be in the closed position.)
5. Confirm shut-in
6. Notify toolpusher/company representative
7. Read and record the following:
 - a. SIDPP and SICP
 - b. Pit gain
 - c. Time
8. Regroup and identify forward plan
9. If pressure has built or is anticipated during the kill to reach the RWP of the annular preventer, confirm spacing and swap to the upper pipe ram.

General Procedure While Running Casing

1. Sound alarm (alert crew)
2. Stab crossover and full opening safety valve and close
3. Space out string
4. Shut-in (uppermost applicable BOP, typically annular preventer first. HCR and choke will already be in the closed position.)
5. Confirm shut-in
6. Notify toolpusher/company representative
7. Read and record the following:
 - a. SIDPP and SICP
 - b. Pit gain
 - c. Time
8. Regroup and identify forward plan
9. If pressure has built or is anticipated during the kill to reach the RWP of the annular preventer, confirm spacing and swap to compatible pipe ram.

General Procedure With No Pipe In Hole (Open Hole)

1. Sound alarm (alert crew)
2. Shut-in with blind rams or BSR. (HCR and choke will already be in the closed position.)
3. Confirm shut-in
4. Notify toolpusher/company representative
5. Read and record the following:
 - a. SICP
 - b. Pit gain
 - c. Time
6. Regroup and identify forward plan

Devon Energy Annular Preventer Summary

General Procedures While Pulling BHA thru Stack

1. PRIOR to pulling last joint of drillpipe thru the stack.
 - a. Perform flowcheck, if flowing:
 - b. Sound alarm (alert crew)
 - c. Stab full opening safety valve and close
 - d. Space out drill string with tool joint just beneath the upper pipe ram.
 - e. Shut-in using upper pipe ram. (HCR and choke will already be in the closed position.)
 - f. Confirm shut-in
 - g. Notify toolpusher/company representative
 - h. Read and record the following:
 - i. SIDPP and SICP
 - ii. Pit gain
 - iii. Time
 - i. Regroup and identify forward plan

2. With BHA in the stack and compatible ram preventer and pipe combo immediately available.
 - a. Sound alarm (alert crew)
 - b. Stab crossover and full opening safety valve and close
 - c. Space out drill string with upset just beneath the compatible pipe ram.
 - d. Shut-in using compatible pipe ram. (HCR and choke will already be in the closed position.)
 - e. Confirm shut-in
 - f. Notify toolpusher/company representative
 - g. Read and record the following:
 - i. SIDPP and SICP
 - ii. Pit gain
 - iii. Time
 - h. Regroup and identify forward plan

3. With BHA in the stack and NO compatible ram preventer and pipe combo immediately available.
 - a. Sound alarm (alert crew)
 - b. If possible to pick up high enough, pull string clear of the stack and follow “Open Hole” scenario.
 - c. If impossible to pick up high enough to pull the string clear of the stack:
 - d. Stab crossover, make up one joint/stand of drillpipe, and full opening safety valve and close
 - e. Space out drill string with tooljoint just beneath the upper pipe ram.
 - f. Shut-in using upper pipe ram. (HCR and choke will already be in the closed position.)
 - g. Confirm shut-in
 - h. Notify toolpusher/company representative
 - i. Read and record the following:
 - i. SIDPP and SICP
 - ii. Pit gain
 - iii. Time
 - j. Regroup and identify forward plan

1. Geologic Formations

| | | | |
|---------------|-------|------------------------------|-----|
| TVD of target | 8716 | Pilot hole depth | N/A |
| MD at TD: | 20082 | Deepest expected fresh water | |

Basin

| Formation | Depth (TVD) from KB | Water/Mineral Bearing/Target Zone? | Hazards* |
|-----------------------|---------------------|------------------------------------|----------|
| Rustler | 0 | | |
| Top of Salt (Tansill) | 202 | | |
| Base of Salt | 359 | | |
| Capitan | 599 | | |
| Delaware | 2902 | | |
| Brushy Canyon | 4127 | | |
| 1st Bone Spring Lime | 5397 | | |
| 1st Bone Spring Sand | 6611 | | |
| 2nd Bone Spring Sand | 7354 | | |
| 3rd Bone Spring Lime | 7703 | | |
| 3rd Bone Spring Sand | 8615 | | |
| | | | |
| | | | |
| | | | |
| | | | |
| | | | |
| | | | |

*H2S, water flows, loss of circulation, abnormal pressures, etc.

2. Casing Program (Primary Design)

| Hole Size | Csg. Size | Wt (PPF) | Grade | Conn | Top (MD) | Bottom (MD) | Top (TVD) | Bottom (TVD) |
|-----------|-----------|----------|--------|----------|----------|-------------|-----------|--------------|
| 26 | 20 | 94.0 | J-55 | STC | 0.0 | 70 MD | 0 | 70 TVD |
| 17 1/2 | 13 3/8 | 54.5 | J-55 | BTC | 0.0 | 550 MD | 0 | 550 TVD |
| 9 7/8 | 8 5/8 | 32.0 | J-55 | GEO Conn | 0 | 2950 | 0 | 2950 |
| 7 7/8 | 5 1/2 | 20.0 | P110CY | 461 | 0 | 20082 MD | 0 | 8716 TVD |

- All casing strings will be tested in accordance with 43 CFR 3172. Must have table for contingency casing.
- The Rustler top will be validated via drilling parameters (i.e. reduction in ROP), and the surface casing setting depth will be revised accordingly. In addition, surface casing will be set a minimum of 25' above the top of the salt.

3. Cementing Program (Primary Design)

| Casing | # Sks | TOC | Wt. (lb/gal) | Yld (ft ³ /sack) | Slurry Description |
|----------------------------|-------|------|--------------|-----------------------------|--|
| Surface | 197 | Surf | 13.2 | 1.44 | Lead: Class C Cement + additives |
| Int | 16 | Surf | 9 | 3.27 | Lead: Class C Cement + additives |
| | 339 | 50 | 13.2 | 1.44 | Tail: Class H / C + additives |
| Int 1 | 102 | Surf | 9 | 3.27 | Lead: Class C Cement + additives |
| | 67 | 2450 | 13.2 | 1.44 | Tail: Class H / C + additives |
| Int 1 Intermediate Squeeze | 232 | Surf | 9 | 1.44 | Squeeze Lead: Class C Cement + additives |
| | 102 | Surf | 9 | 3.27 | Lead: Class C Cement + additives |
| | 67 | 2450 | 13.2 | 1.44 | Tail: Class H / C + additives |
| Production | 461 | 550 | 9 | 3.27 | Lead: Class H / C + additives |
| | 1537 | 8468 | 13.2 | 1.44 | Tail: Class H / C + additives |

| Casing String | % Excess |
|---------------------------------|----------|
| Surface | 50% |
| Intermediate and Intermediate 1 | 30% |
| Intermediate 1 (Two Stage) | 25% |
| Prod | 10% |

Devon Energy requests to offline cement on intermediate strings that are set in formations shallower than the Wolfcamp. Prior to commencing offline cementing operations, the well will be monitored for any abnormal pressures and confirmed to be static. A dual manifold system (equipped with chokes) for the returns will also be utilized as a redundancy. All equipment used for offline cementing will have a minimum 5M rating to match intermediate sections' 5M BOPE requirements

4. Pressure Control Equipment (Four String Design)

| BOP installed and tested before drilling which hole? | Size? | Min. Required WP | Type | ✓ | Tested to: |
|--|--|------------------|--------------|---|--------------------------------|
| Int | 13-5/8" | 5M | Annular | X | 50% of rated working pressure |
| | | | Blind Ram | X | 5M |
| | | | Pipe Ram | | |
| | | | Double Ram | X | |
| Other* | | | | | |
| Int 1 | 13-5/8" | 5M | Annular (5M) | X | 100% of rated working pressure |
| | | | Blind Ram | X | 5M |
| | | | Pipe Ram | | |
| | | | Double Ram | X | |
| Other* | | | | | |
| Production | 13-5/8" | 5M | Annular (5M) | X | 100% of rated working pressure |
| | | | Blind Ram | X | 5M |
| | | | Pipe Ram | | |
| | | | Double Ram | X | |
| Other* | | | | | |
| N | A variance is requested for the use of a diverter on the surface casing. See attached for schematic. | | | | |
| N | A variance is requested to run a 5 M annular on a 10M system | | | | |

CEDAR HILLS 15-16 STATE COM 335H

2. Casing Program (alternative)

| Hole Size | Csg. Size | Wt (PPF) | Grade | Conn | Top (MD) | Bottom (MD) | Top (TVD) | Bottom (TVD) |
|-----------|-----------|----------|--------|---------|----------|-------------|-----------|--------------|
| 26 | 20 | 94.0 | J-55 | BTC | 0.0 | 70 MD | 0 | 70 TVD |
| 16 | 13 3/8 | 54.5 | J-55 | BTC | 0.0 | 550 MD | 0 | 550 TVD |
| 12 1/4 | 10 3/4 | 45.5 | J-55 | BTC SCC | 0 | 1200 | 0 | 1200 |
| 9 7/8 | 8 5/8 | 32.0 | P110HP | Talon | 0 | 2950 | 0 | 2950 |
| 7 7/8 | 5 1/2 | 20.0 | P110HP | Talon | 0 | 20082 MD | 0 | 8716 TVD |

• All casing strings will be tested in accordance with 43 CFR 3172. Must have table for contingency casing.

• The Rustler top will be validated via drilling parameters (i.e. reduction in ROP), and the surface casing setting depth will be revised accordingly. In addition, surface casing will be set a minimum of 25' above the top of the salt.

• If cement does not circulate to surface, remediation will be done with an appropriately sized tubing to meet radial clearance requirements

3. Cementing Program (alternative)

| Casing | # Sk | TOC | Wt. (lb/gal) | Yld (ft ³ /sack) | Slurry Description |
|------------|------|------|--------------|-----------------------------|----------------------------------|
| Surface | 197 | Surf | 13.2 | 1.44 | Lead: Class C Cement + additives |
| Int 1 | 1464 | 0 | 13.2 | 1.44 | Tail: Class H / C + additives |
| Int 2 | 40 | 0 | 9 | 3.27 | Lead: Class C Cement + additives |
| | 126 | 550 | 13.2 | 1.44 | Tail: Class H / C + additives |
| Int 3 | 363 | 0 | 13 | 3.27 | Lead: Class H / C + additives |
| | 48 | 2450 | 13.8 | 1.44 | Tail: Class H / C + additives |
| Production | 476 | 2450 | 9 | 3.27 | Lead: Class H / C + additives |
| | 1537 | 8468 | 13.8 | 1.44 | Tail: Class H / C + additives |

Assuming no returns are established while drilling, Devon requests to pump a two stage cement job on the intermediate 2 casing string with the first stage being pumped conventionally with the calculated top of cement at the Capitan Reef and the second stage performed as a bradenhead squeeze with planned cement from the Capitan Reef to surface. The final cement top will be verified by Echo-meter. Devon will include the Echo-meter verified fluid top and the volume of displacement fluid above the cement slurry in the annulus in all post-drill sundries on wells utilizing this cement program.

Devon Energy requests to offline cement on intermediate strings that are set in formations shallower than the Wolfcamp. Prior to commencing offline cementing operations, the well will be monitored for any abnormal pressures and confirmed to be static. A dual manifold system (equipped with chokes) for the returns will also be utilized as a redundancy. All equipment used for offline cementing will have a minimum 5M rating to match intermediate sections' 5M BOPE requirements.

| Casing String | % Excess |
|----------------------------|----------|
| Surface | 50% |
| Intermediate | 30% |
| Intermediate 2 (Two Stage) | 25% |
| Prod | 10% |

4. Pressure Control Equipment (Five String Design)

| BOP installed and tested before drilling which hole? | Size? | Min. Required WP | Type | ✓ | Tested to: |
|--|--|------------------|--------------|---|--------------------------------|
| Int | 13-5/8" | 5M | Annular | X | 50% of rated working pressure |
| | | | Blind Ram | X | 5M |
| | | | Pipe Ram | | |
| | | | Double Ram | X | |
| | | | Other* | | |
| Int 2 & 3 | 13-5/8" | 5M | Annular (5M) | X | 100% of rated working pressure |
| | | | Blind Ram | X | 5M |
| | | | Pipe Ram | | |
| | | | Double Ram | X | |
| | | | Other* | | |
| Production | 13-5/8" | 5M | Annular (5M) | X | 100% of rated working pressure |
| | | | Blind Ram | X | 5M |
| | | | Pipe Ram | | |
| | | | Double Ram | X | |
| | | | Other* | | |
| N | A variance is requested for the use of a diverter on the surface casing. See attached for schematic. | | | | |
| N | A variance is requested to run a 5 M annular on a 10M system | | | | |

Diverter will be utilized on the 26in Surface hole. BOP will be rigged up on the first intermediate

5. Mud Program

| Section | Type | Weight (ppg) |
|----------------|-----------------|--------------|
| Surface | WBM | 8.5-9 |
| Intermediate | DBE / Cut Brine | 10-10.5 |
| Intermediate 1 | WBM | 8.5-9 |
| Production | OBM | 10-10.5 |

Sufficient mud materials to maintain mud properties and meet minimum lost circulation and weight increase requirements will be kept on location at all times.

| | |
|---|-----------------------------|
| What will be used to monitor the loss or gain of fluid? | PVT/Pason/Visual Monitoring |
|---|-----------------------------|

6. Logging and Testing Procedures

| Logging, Coring and Testing | |
|-----------------------------|---|
| X | Will run GR/CNL from TD to surface (horizontal well - vertical portion of hole). Stated logs run will be in the Completion Report and submitted to the BLM. |
| | No logs are planned based on well control or offset log information. |
| | Drill stem test? If yes, explain. |
| | Coring? If yes, explain. |

| Additional logs planned | Interval |
|-------------------------|-------------|
| | Resistivity |
| | Density |
| X | CBL |
| | Mud log |
| | PEX |

7. Drilling Conditions

| Condition | Specify what type and where? |
|----------------------------|------------------------------|
| BH pressure at deepest TVD | 4759 |
| Abnormal temperature | No |

Mitigation measure for abnormal conditions. Describe. Lost circulation material/sweeps/mud scavengers.

| | |
|--|--------------------|
| Hydrogen Sulfide (H2S) monitors will be installed prior to drilling out the surface shoe. If H2S is detected in concentrations greater than 100 ppm, the operator will comply with the provisions of 43 CFR 3176. If Hydrogen Sulfide is encountered measured values and formations will be provided to the BLM. | |
| N | H2S is present |
| Y | H2S plan attached. |

8. Other facets of operation

Is this a walking operation? Potentially

- 1 If operator elects, drilling rig will batch drill the surface holes and run/cement surface casing; walking the rig to next wells on the pad.
- 2 The drilling rig will then batch drill the intermediate sections and run/cement intermediate casing; the wellbore will be isolated with a blind flange and pressure gauge installed for monitoring the well before walking to the next well.
- 3 The drilling rig will then batch drill the production hole sections on the wells with OBM, run/cement production casing, and install TA caps or tubing heads for completions.

NOTE: During batch operations the drilling rig will be moved from well to well however, it will not be removed from the pad until all wells have production casing run/cemented.

Will be pre-setting casing? Potentially

- 1 Spudder rig will move in and batch drill surface hole.
 - a. Rig will utilize fresh water based mud to drill surface hole to TD. Solids control will be handled entirely on a closed loop basis.,
- 2 After drilling the surface hole section, the spudder rig will run casing and cement following all of the applicable rules and regulations (43 CFR 3172, all COAs and NMOCD regulations).
- 3 The wellhead will be installed and tested once the surface casing is cut off and the WOC time has been reached.
- 4 A blind flange with the same pressure rating as the wellhead will be installed to seal the wellbore. Pressure will be monitored with a pressure gauge installed on the wellhead.
- 5 Spudder rig operations is expected to take 4-5 days per well on a multi-well pa.
- 6 The NMOCD will be contacted and notified 24 hours prior to commencing spudder rig operations.
- 7 Drilling operations will be performed with drilling rig. A that time an approved BOP stack will be nipped up and tested on the wellhead before drilling operations commences on each well.
 - a. The NMOCD will be contacted / notified 24 hours before the drilling rig moves back on to the pad with the pre-set surface casing.

Attachments

- X Directional Plan
- Other, describe

Devon Energy Offline Production Cementing

10/2025

REV5



NYSE: DVN
devonenergy.com



Offline Production Cementing Variance

Devon is respectfully pursuing a variance to the minimum standards to allow for the cementing of the Production Casing offline in the Wolfcamp and shallower producing horizons.

To ensure personnel safety and well integrity, strict eligibility requirements will be enforced, and a detailed procedure will be followed.

The following slides outline the eligibility requirements, offline procedure, schematics and pressure ratings.

Offline Production Eligibility

Offline Punch List:

The well must meet all criteria to qualify for offline cementing.

- A) Well is in the Wolfcamp or shallower bench.
- B) No unusual events were observed during drilling, tripping or casing operations.
- C) Casing successfully landed out on casing hanger (fluted or solid).
- D) Devon Company Men with Well Control certifications will monitor returns (bbl in / bbl out) to ensure well control is maintained.
- E) Rig Manager will oversee the walking of the rig to the next well.
- F) All barriers MUST test and at no point will there be less than 2 barriers in place.
- G) No offset frac operations occurring within 1.0 mile in the same bench.
- H) Once all criteria are met and BLM is notified, Devon may proceed with ND BOP and continue offline operations.

Note: Devon will NOT drill out the next deep intermediate until cementing on the offline well is complete.

Offline Procedure

- **Devon's Proposed Production Offline Procedure:**
- Run casing and perform negative pressure test during casing run to verify integrity of float equipment's 10M backpressure valves.
- Review Devon's "Punch List" to determine if well is a viable candidate.
- Continue running casing and land casing out on Cactus mandrel hanger.
- Fill casing with KWM and perform flow check ensuring well is static.
 - If well is not static, build pressure or acting abnormal in any way - abort offline operations.
- Install 10M packoff and test same. After successful test, engage locking ring and L/D running tool.
- Install 10M backpressure valve in WH from rig floor.
 - Note: 3 Casing barriers and 2 Annular barriers currently in place.
- Once well is secured and BLM notified, ND BOP and walk rig to next well on pad.
 - If ANY barrier fails to test – the well will be cemented online.
 - Devon Company Man and Devon Cementer will oversee Cementing Operations
 - Rig Manager will walk the rig to the next well.
 - Drill out operations on next deep intermediate will not begin until cementing operations have concluded on the offline well.
- Install 10M Gate Valve and Cactus WH adapter.
- Test connection between WH adapter seals, hanger neck, and ring gasket to 10,000psi.
- Open Frac Valve and remove BPV.
- RU cement head, cement iron, return lines and test same.
- Once all equipment is rigged up, barriers tested and ready to cement, notify BLM of intent to Cement Offline.

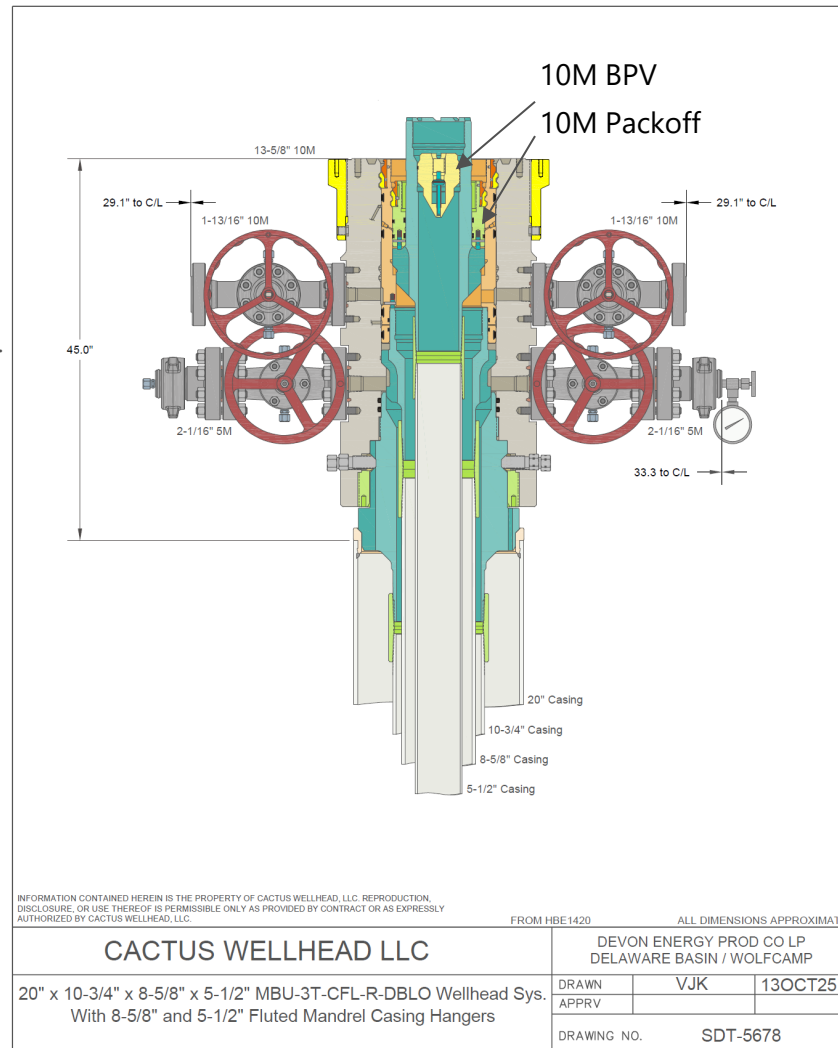
Offline Procedure

- **Devon's Proposed Production Offline Procedure (continued):**
- Perform offline cement job.
- If an influx is observed during the cement job:
 - The Day and Night Company Men will redirect returns from Cementing Manifold to the Rig's choke manifold and hold appropriate backpressure to circulate out influx.
 - If annular surface pressure approaches 25% of the tested pressure of the surface return equipment, or if circulating the influx out with the cementing pumps is not feasible, the well can be secured by closing the 10M casing valves.*
- Bump plug and ensure floats are holding.
 - If plug does not bump or floats do not hold, either the Gate Valve or Cement Head may be closed while we WOC.
- RD cement head and install BPV.
- Remove Gate Valve and WH adapter.
- Install TA Cap with pressure gauge and test same.
- ***Note*** - If the well is within the KPLA, and an uncemented annulus between the Production and Intermediate casing has been utilized; then cement shall be squeezed down both casing valves within 180 days of the well's completion and displaced with a treated fresh water to a TOC below the potash interval and marker bed number 126, with a minimum of 500' tie-back inside the Intermediate Casing as per R111Q.

*Note – This hasn't been observed

Offline Procedure – Detailed

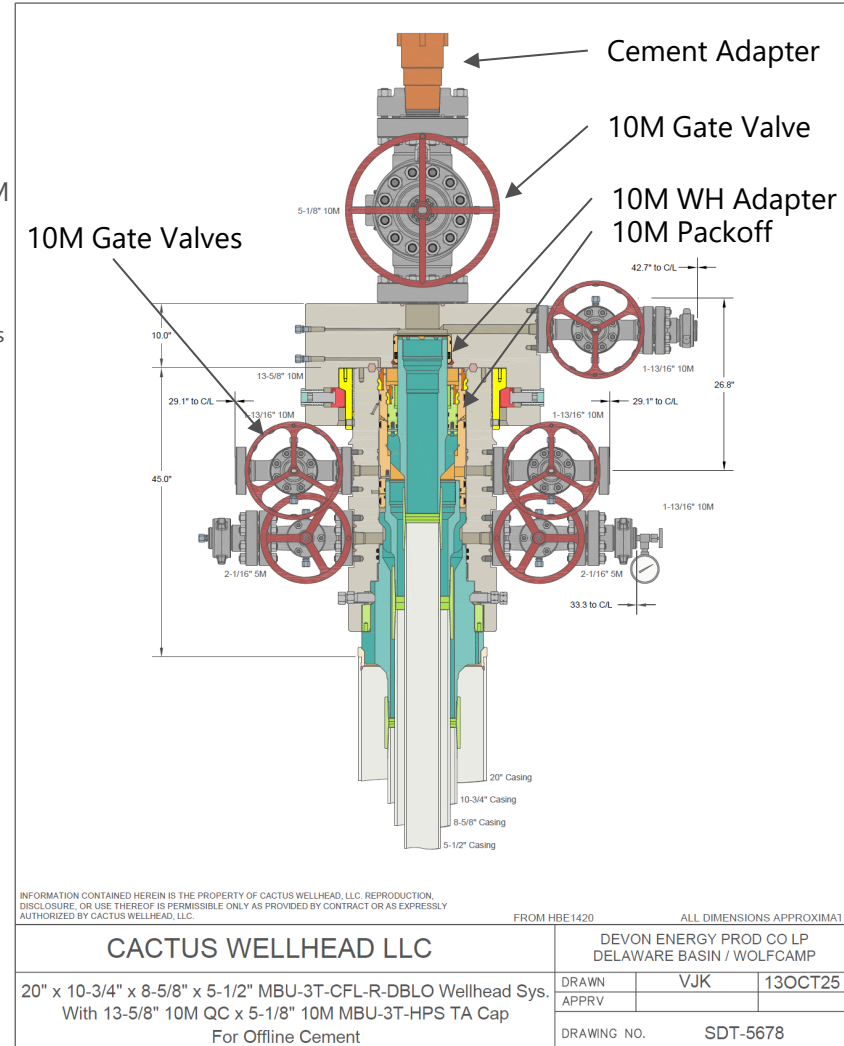
- Run casing and perform negative pressure test during casing run to verify integrity of float equipment’s 10,000psi backpressure valves.
 - Review Devon’s “Punch List” to determine if well is a viable candidate.
- Continue running casing and land casing out on Cactus mandrel hanger.
- Fill casing with KWM and perform flow check ensuring well is static.
- Install packoff rated to 10,000psi and test same. After successful test, engage locking ring and L/D running tool.
- Install backpressure valve in WH from rig floor.
 - Note: 3 Casing barriers and 2 Annular barriers currently in place.
- Once well is secured and BLM notified, ND BOP and walk rig to next well on pad.
 - If ANY barrier fails to test – the well will be cemented online.
 - Devon PIC and Devon Cementer will oversee Cementing Operations
 - Rig Manager will walk the rig to the next well.
 - Drill out operations on next deep intermediate will not begin until cementing operations have concluded on the offline well.



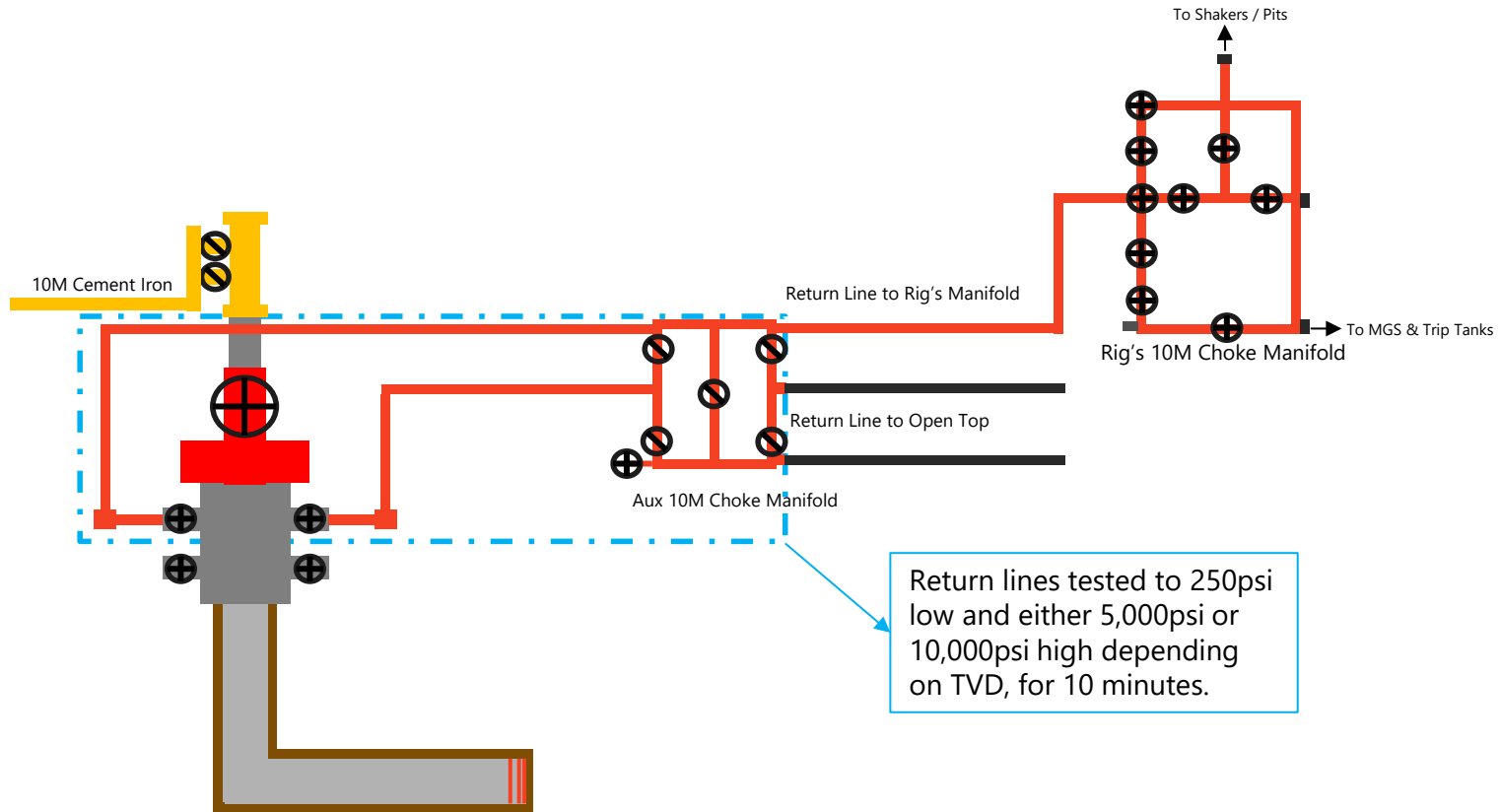
| Casing Barrier | Rating | Backside Barrier | Rating |
|-------------------|-----------|------------------|-----------|
| BPV | 10,000psi | KWM | > BHP |
| KWM | > BHP | Packoff | 10,000psi |
| Float Valves (x3) | 10,000psi | | |

Offline Procedure – Detailed

- Install 10M Frac Valve and Cactus WH adapter.
- Test connection between WH adapter seals, hanger neck, and ring gasket to 10,000psi.
- Open Frac Valve and remove BPV.
- RU cement head, cement iron, return lines and test same.
- Once all equipment is rigged up, barriers tested and ready to cement, notify BLM of intent to Cement Offline.
- Perform offline cement job.
- If an influx is observed during the cement job:
 - The Day and Night Company Men will redirect returns from Cementing Manifold to the Rig's choke manifold and hold appropriate backpressure to circulate out influx.
 - If annular surface pressure approaches 25% of the tested pressure of the surface return equipment, or if circulating the influx out with the cementing pumps is not feasible, the well can be secured by closing the 10M casing valves.
- Bump plug and ensure floats are holding.
 - If plug does not bump or floats do not hold, either the Gate Valve or Cement Head may be closed while we WOC.
- RD cement head and install BPV.
- Remove Gate Valve and WH adapter.
- Install TA Cap with pressure gauge and test same.



Offline Flow Path



Return lines tested to 250psi low and either 5,000psi or 10,000psi high depending on TVD, for 10 minutes.

- ⊕ 10M Valve / Choke
- ⊘ 10M Low Torq

- Note:
- All lines are 10M rated and tested to **5,000psi for wells less than 12,000' TVD**
 - All lines are 10M rated and tested to **10,000psi for wells greater than 12,000' TVD**
 - Minimum of 2 barriers in place at ALL times
 - Never had to circulate out an influx during an Offline job

Thank you.



BOPE Break Test Variance

10/2025
REV4



NYSE: DVN
devonenergy.com



BOPE Break Test Variance (Less than 12,000' TVD)

Devon is respectfully pursuing a variance to the minimum standards to allow a testing schedule of the blow out prevention equipment (BOPE) along with Stump Testing, Batch Drilling & Offline Cementing operations to include the following:

- Conduct a full 10k BOPE and 5k Annular test upon initial installation on the pad.
- If the rig has the ability to do a Stump Test, this is permitted for initial installation.
- Perform full BOPE tests every 21 days thereafter.
- Intermediate & Production Break-testing is permitted to the base of the Wolfcamp or shallower (limited to **12,000' TVD**).
- Once the well is secured and BLM has been notified, disconnect the BOP and walk the rig to the next well on the pad.
 - If any unusual events occur during drilling, tripping, or casing operations, break-testing will not be performed
 - If offset fracturing is observed within 1.0 mile in the same producing horizon, break-testing in the production section will not be performed.
- Each rig requesting a break-test variance must be capable of picking up the BOP without damaging components, using winches and following API Standard 53 (Fifth Edition, December 2018, Annex C, Table C.4), which recognizes break-testing as an acceptable practice.
- Function tests will be performed on the following BOP elements:
 - Annular: During each full BOPE test and at least weekly.
 - Pipe Rams: On every trip and on trip-ins where a FIT is required.
 - Blind Rams: On every trip.
- Break-testing the BOP allows for offline cementing and/or remediation (if needed) of any surface, intermediate, or production sections, in accordance with the attached offline cementing support documentation.
- After securing the well section, disconnect the BOP from the wellhead and walk it with the rig to another well on the pad.
- Install a TA cap per Cactus Wellhead procedures and monitor casing pressure via the valve on the TA cap.

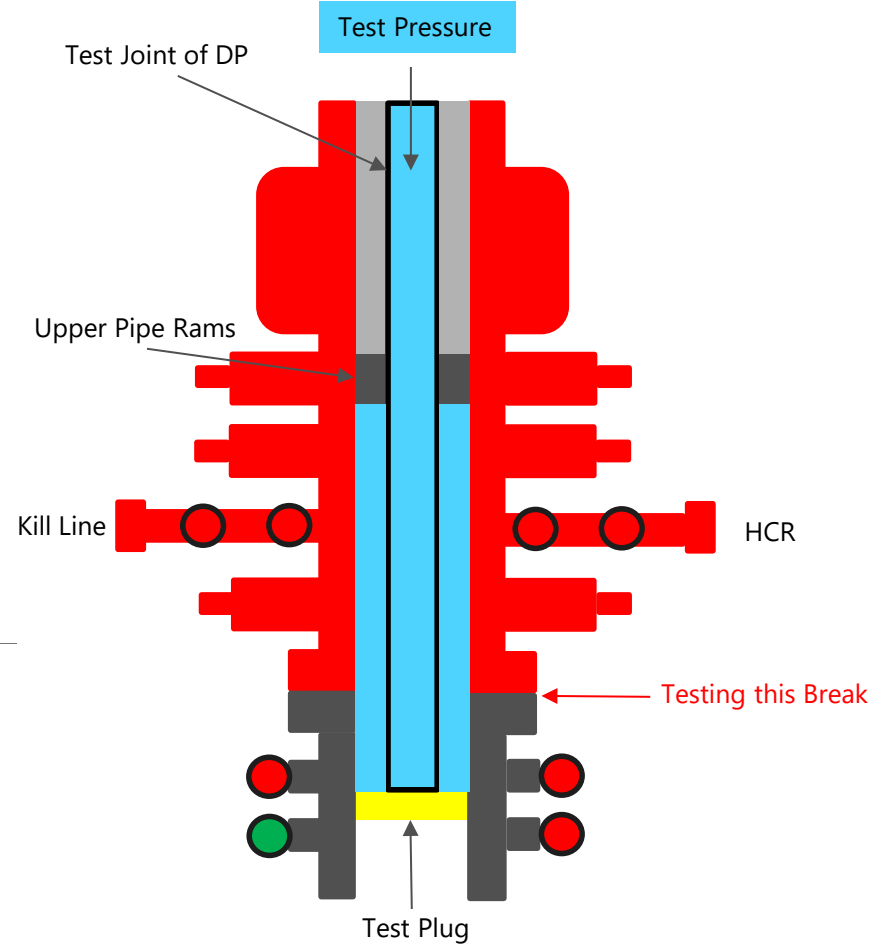
BOPE Break Test Variance (Less than 12,000' TVD)

Test Procedure:

1. Makeup test plug on DP and set in Wellhead.
2. Close Upper Pipe Rams around DP.
3. Close Kill Line & HCR.
4. Open wellhead valve to ensure if pressure leaks past plug, it won't pressure up wellbore.
5. Tie into top of DP at Rig Floor. Fill with water and test Break + Pipe Rams to 250psi low and 10,000psi high.
6. Bleed off pressure.
7. Open Upper Pipe Rams, close wellhead valve and lay down test plug and DP.

Component Table:

| Components | Offline | Offline, BOPE | Break | Online |
|---|---------|---------------|-------|--------|
| Upper Rams | | X | X | X |
| Blind Rams | | X | | X |
| Lower Rams | | | | X |
| Outside Kill Valve | | X | X | X |
| Inside Kill Valve | | X | X | X |
| Kill Line Check Valve | | X | X | X |
| Inside Choke Valve | | X | X | X |
| HCR | | X | X | X |
| Kill Line | X | | | X |
| Annular | | X | X | X |
| Choke Manifold Valves and Hose | X | | | X |
| Mudline (Mud Pumps, Rig Floor Valves, Kelly Hose, Mud Line) | X | | | X |
| Standpipe Valve | X | | | X |
| IBOP (Upper and Lower) | X | | | X |



Devon requests offline BOPE testing for the following components: Upper Rams, Blind Rams, Kill Valves, Choke Valves, and Annular

Remaining well control equipment components will either be tested offline or online, per BLM approval

Remaining BOPE will be tested online within 72 hours from completing the offline BOPE component testing

Notify the BLM if the online BOPE testing exceeds 72-hours

All Full Tests not completed "Offline" or "Offline, BOPE" are required to be completed Online

Thank you.



Sante Fe Main Office
Phone: (505) 476-3441

General Information
Phone: (505) 629-6116

Online Phone Directory
<https://www.emnrd.nm.gov/ocd/contact-us>

State of New Mexico
Energy, Minerals and Natural Resources
Oil Conservation Division
1220 S. St Francis Dr.
Santa Fe, NM 87505

CONDITIONS

Action 565257

CONDITIONS

| | |
|---|--|
| Operator: DEVON ENERGY PRODUCTION COMPANY, LP 333 West Sheridan Ave. Oklahoma City, OK 73102 | OGRID: 6137 |
| | Action Number: 565257 |
| | Action Type: [C-103] NOI Change of Plans (C-103A) |

CONDITIONS

| Created By | Condition | Condition Date |
|-------------|---|----------------|
| ward.rikala | This well is within the Capitan Reef. The first intermediate casing string shall be set and cemented back to surface immediately above the Capitan Reef. The second intermediate string shall be set and cemented back to surface immediately below the base of the Capitan Reef. | 3/23/2026 |
| ward.rikala | Any previous COA's not addressed within the updated COA's still apply. | 3/23/2026 |