

<b>Well Name:</b> JAECO 26-3 22	<b>Well Location:</b> T26N / R3W / SEC 22 / SWSE / 36.4670174 / -107.1290038	<b>County or Parish/State:</b> RIO ARRIBA / NM
<b>Well Number:</b> 1A	<b>Type of Well:</b> CONVENTIONAL GAS WELL	<b>Allottee or Tribe Name:</b> JICARILLA APACHE
<b>Lease Number:</b> 701020014	<b>Unit or CA Name:</b>	<b>Unit or CA Number:</b>
<b>US Well Number:</b> 3003930050	<b>Operator:</b> LOGOS OPERATING LLC	

**Subsequent Report**

**Sundry ID:** 2901454

**Type of Submission:** Subsequent Report

**Type of Action:** Plug and Abandonment

**Date Sundry Submitted:** 03/19/2026

**Time Sundry Submitted:** 02:02

**Date Operation Actually Began:** 01/27/2026

**Actual Procedure:** 1/27/2026 – MIRU. ND WH. NU & Function test BOP. PT 5-1/2" casing 560psi/15mins. Good test. RU coil unit. SDFN. 1/28 – 1/29/2026 – RIH tag CIBP @ 5568'. Drill out CIBP & push debris to 6450'. POOH lay down mill. RIH to 6446'. Plug #3 (6270' – 6446') Mix and pump 20sxs G cmt, 1.15yield, displace w/20bbbls of FW. POOH. RIH & set CIBP @ 5572'. Plug #4 (5396' – 5572') Mix and pump 20sxs G cmt, 1.15yield, displace w/20bbbls of FW. PU to 4979'. Abrasion perforate at 4979', unable to establish injection. POOH. SDFN. 1/30/2026 – RIH set CIBP @ 4929'. PT casing 550psi. Good test. Plug #5 (4753'-4929') Mix and pump 20sxs G cmt, 1.15yield, displace w/20bbbls of FW. PU 4190'. Received approval by Kenny Rennick (BLM) to re-perf @ 4170'. Abrasion perf at 4165', unable to establish injection rate. SDFWE. Plugs 3-5 witnessed by Jared Benally (BLM). 2/2 – 2/3/2026 – RIH set CICR @ 4167', sqz perms @ 4165' no injection. POOH. RIH set CICR @ 4097'. Establish injection rate. SDFN. 2/4/2026 – RD coil tubing. ND BOP. NU WH. Service rig. SDFN. 2/5 – 2/6/2026 – ND WH. NU & function test BOP. MU 4-3/4" bit, TIH, tag cmt @ 3936'. Drill out cmt f/3936' t/4008'. Repair pump, replace bad hoses. RU swivel, reverse circulate to DO cmt f/4008' to CICR @ 4097'. SDFWE. 2/9/2026 – RU WL. RIH tag CICR @ 4097', perf @ 4096'. FW established injection rate. TOOH. TIH and set CICR @ 4028'. Plug #6 (3353' – 4097' inside/outside) Mix and pump 166sxs G cmt, 1.15yield, 15.8ppg, displace w/16bbbls of FW. TOOH. RU WL. RIH & perf @ 2599'. TIH set CICR @ 2532. Plug #7 (2400'-2599' inside/outside) Mix and pump 35sxs G cmt, 1.15yield, displace w/7bbbls of FW. TOOH. RU WL. RIH perf @ 368', no circulation out BH. TIH to 413'. SIW. SDFN. 2/10/2026 – EOT @ 413'. Plug #8 (surf – 368' inside/outside) Mix and pump 110sxs G cement, 1.15yield, circulated 2bbbls. Lay down tbg. ND BOP. Cut off WH. Top off cellar with 20sxs G cmt, 1.15yield. Install P&A marker. RDMO. Plugs 6-8 witnessed by Orrin Sandoval (BLM). Well plugged and abandoned.

Well Name: JAECO 26-3-22

Well Location: T26N / R3W / SEC 22 / SWSE / 36.4670174 / -107.1290038

County or Parish/State: RIO ARRIBA / NM

Well Number: 1A

Type of Well: CONVENTIONAL GAS WELL

Allottee or Tribe Name: JICARILLA APACHE

Lease Number: 701020014

Unit or CA Name:

Unit or CA Number:

US Well Number: 3003930050

Operator: LOGOS OPERATING LLC

SR Attachments

Actual Procedure

Jaeco\_26\_3\_22\_1A\_PA\_Wellbore\_Schematic\_20260319140156.pdf

Jaeco\_26\_3\_22\_1A\_PA\_Marker\_20260319140144.pdf

Operator

I certify that the foregoing is true and correct. Title 18 U.S.C. Section 1001 and Title 43 U.S.C. Section 1212, make it a crime for any person knowingly and willfully to make to any department or agency of the United States any false, fictitious or fraudulent statements or representations as to any matter within its jurisdiction. Electronic submission of Sundry Notices through this system satisfies regulations requiring a

Operator Electronic Signature: ETTA TRUJILLO

Signed on: MAR 19, 2026 02:02 PM

Name: LOGOS OPERATING LLC

Title: Regulatory Specialist

Street Address: 2010 AFTON PLACE

City: FARMINGTON State: NM

Phone: (505) 324-4154

Email address: ETRUJILLO@LOGOSRESOURCESLLC.COM

Field

Representative Name:

Street Address:

City: State: Zip:

Phone:

Email address:

BLM Point of Contact

BLM POC Name: KENNETH G RENNICK

BLM POC Title: Petroleum Engineer

BLM POC Phone: 5055647742

BLM POC Email Address: krennick@blm.gov

Disposition: Accepted

Disposition Date: 03/25/2026

Signature: Kenneth Rennick

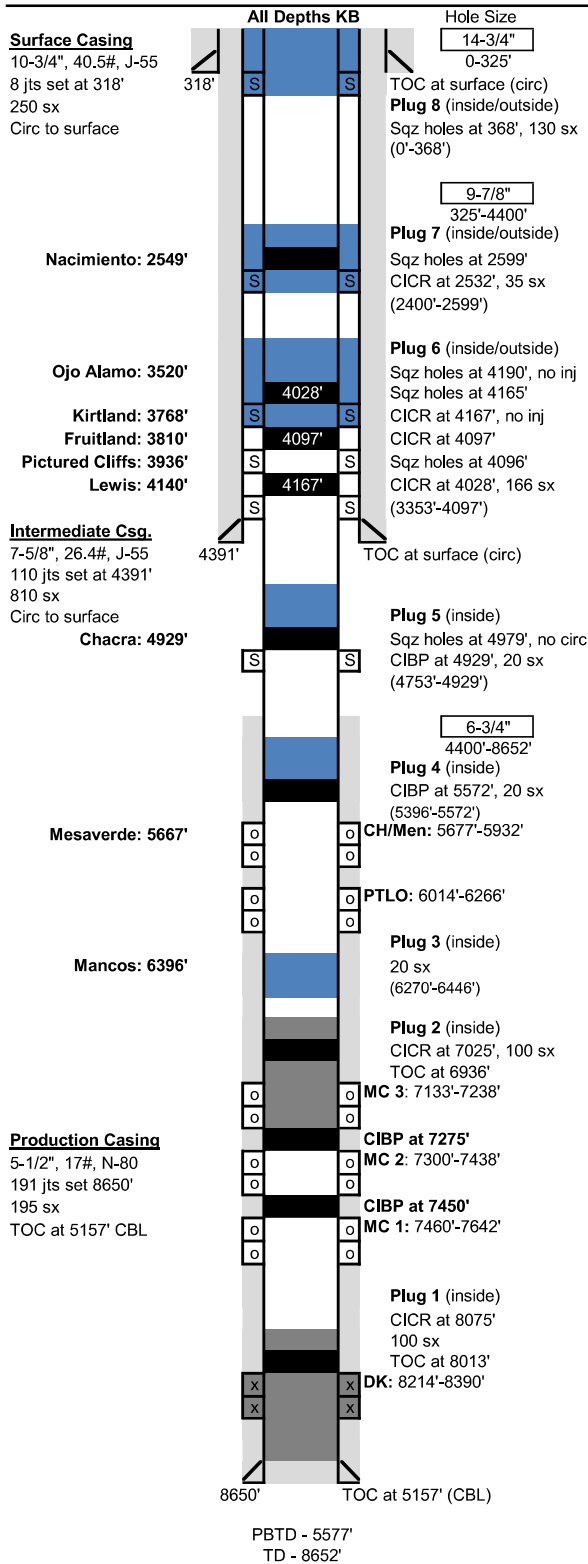


**P&A Wellbore Schematic**

Well Name: Jaeco 26-3 22 001A  
 Location: Sec 22, T26N, R03W 790' FSL & 1850' FEL  
 County: Rio Arriba  
 API #: 30-039-30050  
 Co-ordinates: Lat 36.4686432 Long -107.1298294  
 Elevations: GROUND: 7362'  
                   KB: 7376'  
 Depths (KB): PBTD: 5577' MD, 5559' TVD  
                   TD: 8652' MD, 8628' TVD

Date Prepared: 6/21/2022 Peace  
 Reviewed By: [Signature]  
 Last Updated: 2/20/2026 Moss  
 Spud Date: 10/31/2008  
 Completion Date: 2/23/2009  
 Last Workover Date: 2/10/2026 P&A

**DIRECTIONAL WELLBORE**



**Surface Casing:** (11/02/2008)  
 Drilled a 14-3/4" surface hole to 325'. Set 8 jts 10-3/4", 40.5#, J-55 casing at 318'.  
 Cmt w/ 250 sx of Type III cmt (350 cf). Circ 25 bbls cmt to surface.

**Intermediate Casing:** (11/12/2008)  
 Drilled a 9-7/8" intermediate hole to 4400'. Set 110 jts 7-5/8", 26.4#, J-55 casing at 4391'.  
 FC at 4349'. Cmt w/ 710 sx Premium Lite (12.1 ppg, 2.11 yld, 1498 cf). Tailed w/ 100 sx  
 Type III cmt (14.5 ppg, 1.4 yld, 139 cf). Circ 100 bbls cmt to surface.

**Production Casing:** (11/13/2008)  
 Drilled a 6-3/4" production hole to 8652'. Set 191 jts 5-1/2", 17#, N-80 casing at 8650'.  
 FC at 8603'. Cmt w/ 85 sx (11.6 ppg, 2.59 yld, 220 cf). Tailed w/ 110 sx Class H cmt.  
 (234 cf, 12.3 ppg, 2.13 yld). TOC at 5157' (CBL - 12/2008).

**Tubing:** NA Length (ft) 14  
 KB

**Perforations:** (11/2008-2/2009) \*See details in Perforations Tab  
**CH/MEN - 5677'-5932':** 58, 0.34" holes. Acidized w/ 1000 gal 15% HCL. Frac w/ 1500#  
 20/40 brown sand & 3000# 100 mesh in 1788 bbls slickwater. Started to screen out at  
 end of 0.15 ppg stage w/ 100 mesh.  
**PTLO - 6014'-6266':** 49, 0.34" holes. Acidized w/ 1000 gal 15% HCL. Frac w/ 1500#  
 w/ 1500# 20/40 brown sand & 7000# 100 mesh mono prop in 2544 bbls slickwater.  
 Started to screen out at the end of 0.2 ppg stage w/ 100 mesh.  
**Perfs Abandoned Upon Completion - See Details in Additional Notes Section**  
**Stg 3 MC (2009 P&A) - 7133'-7238':** 3 SPF. 45, 0.36" holes. Pump test only, did not stim.  
**Stg 2 MC (2009 P&A) - 7300'-7438':** 3 SPF. 60, 0.34" holes. Acidized w/ 2000 gal 15% HCL.  
 Frac w/ 8440# 100 mesh white sand & 88,664# 40/70 white sand in 3101 bbls slickwater.  
 Started to screen out on last stage w/ 1.25 ppg 40/70 sand.  
**Stg 1 MC (2009 P&A) - 7460'-7642':** 3 SPF. 78, 0.34" holes. Acidize w/ 2000 gal 15% HCL.  
 08, 12, 18, 22, 30, 38, 44, 50, 56, 64, 70, 76, 82, 88, 96, 7604', 10, 18, 32, 7642'.  
 Frac w/ 9160# 100 mesh white sand & 120,760# 40/70 white sand in 3858 bbls slickwater.  
**DK (2008 P&A) - 8214'-8390':** 3 SPF. 69, 0.34" holes. Acidize w/ 2000 gal 15% HCL.  
 Frac w/ 8020# 100 mesh white sand & 120,420# 40/70 white sand in 3795 bbls slickwater.

**Formations:**

Nacimiento-	2549'	Lewis-	4140'
Ojo Alamo-	3520'	Chacra -	4929'
Kirtland-	3768'	Mesaverde-	5667'
Fruitland-	3810'	Mancos-	6396'
Pictured Cliff-	4000'	Dakota-	8210'

**Additional Notes:**  
 11/2008 Initial Completion. Completed the DK. P&A'd DK after FB 10 days, set CIBC at 8075'.  
 P&A'd DK w/ 100 sx type III neat cmt (14.6 ppg, 1.39 yld, 25 bbls), stung into CIBC & pumped  
 23.5 bbls cmt. Stung out of CIBC & spotted 1.5 bbls cmt on top of CIBC. TOC at 8013'.  
 Completed 1st stage of MC, left CIBC at 7450'. Completed 2nd stage of MC, left CIBC at  
 7275'. Completed 3rd stage of MC, & decided to P&A MC. Set CIBC at 7025' & P&A w/ 100 sx  
 cmt (15.3 ppg, 1.18 yld, 21 bbls). Stung into CIBC & pumped 19.5 bbls cmt, stung out &  
 spotted 1.5 bbls cmt. TOC at 6936'. Perf'd & stim'd PLO & CH/Men, screened out at end of  
 both fracs. Spent 7 days trying to unload water. Set 2-7/8" tbg at 6126' w/ Model R packer  
 at 5962' to isolate formations. Spent 15 days trying to unload PLO. Unseated pkr & unload  
 w/ air pkg. Total fluid recovered was 3068 bbls. Landed 2-7/8" tbg at 6249'.  
 10/2012 LD 2-7/8" J-55 tbg. Set 5-1/2" Owen CIBC at 5577'. PT csg to 550#, lost 10# during  
 30 min test, held solid for 10 min, OCD approved MIT.  
 02/2026 P&A. PT 5-1/2" csg to 560 psi for 15 min, good test. Tag CIBC at 5568',  
 & DO CIBC to 6450'. Wellbore was partially plugged back to 6396' w/ 2 plugs in 2008.  
 P&A'd rest of wellbore w/ Class G cmt, 1.15 yield, 15.8 ppg for all plugs. All plug tops  
 calculated per cmt volumes & 7.6613 ft/ft3 casing capacity.  
**Plug 3: 6270'-6446', 20 sx cmt.**  
**Plug 4: 5396'-5572', 20 sx cmt. CIBC at 5572'.**  
**Plug 5: 4753'-4929', 20 sx cmt. Abrasion perf at 4979', couldn't est circ. Set CIBC at 4929'**  
**& spot 20 sx cmt on top. Approved by Virgil Lucero w/ BLM.**  
**Plug 6: 3353'-4097', 174 sx cmt. Abrasion perf at 4190', no injection. Abrasion perf at**  
**4165', est 1 BPM inj rate at 1000 psi. Set CIBC at 4167' (2' below perfs & 4165').**  
**Set CIBC at 4097', sting into CIBC & began pumping 78 sx cmt. No inj into perfs, could not**  
**circ cmt from wellbore. RIH w/ 4-3/4" bit & DO cmt from 3936' to CIBC at 4097'.**  
**Perf at 4096' & est 3 BPM rate. Set CIBC at 4028'. Pump 78 sx below CIBC at 4028' & spot**  
**88 sx on top. Approved by Kenneth Rennick w/ BLM.**  
**Plug 7: 2400'-2599', 35 sx cmt. Wireline perf at 2599'. Set CIBC at 2532' & pump 20 sx**  
**below CIBC & spot 15 sx on top.**  
**Plug 8: 0'-368', 130 sx cmt. Wireline perf at 368'. Est circ throug intermediate, but not BH.**  
**Pump 46 sx into intermediate & leave 64 sx in 5-1/2" csg. Top off with 20 sx.**



Sante Fe Main Office  
Phone: (505) 476-3441

General Information  
Phone: (505) 629-6116

Online Phone Directory  
<https://www.emnrd.nm.gov/ocd/contact-us>

**State of New Mexico**  
**Energy, Minerals and Natural Resources**  
**Oil Conservation Division**  
**1220 S. St Francis Dr.**  
**Santa Fe, NM 87505**

CONDITIONS

Action 566541

**CONDITIONS**

Operator: LOGOS OPERATING, LLC 2010 Afton Place Farmington, NM 87401	OGRID: 289408
	Action Number: 566541
	Action Type: [C-103] Sub. Plugging (C-103P)

**CONDITIONS**

Created By	Condition	Condition Date
loren.diede	None	3/25/2026