

Sante Fe Main Office  
Phone: (505) 476-3441

General Information  
Phone: (505) 629-6116

Online Phone Directory  
<https://www.emnrd.nm.gov/ocd/contact-us>

**State of New Mexico  
Energy, Minerals and Natural Resources  
Oil Conservation Division  
1220 S. St Francis Dr.  
Santa Fe, NM 87505**

Form C-101  
August 1, 2011  
Permit 410720

**APPLICATION FOR PERMIT TO DRILL, RE-ENTER, DEEPEN, PLUGBACK, OR ADD A ZONE**

1. Operator Name and Address GORDY OIL COMPANY 100 WAUGH DRIVE, STE 400 HOUSTON, TX 77007		2. OGRID Number 333330
4. Property Code 339009		3. API Number 30-025-56084
5. Property Name Atlas 5 4 State Com		6. Well No. 001H

**7. Surface Location**

UL - Lot M	Section 5	Township 14S	Range 33E	Lot Idn M	Feet From 1105	N/S Line S	Feet From 424	E/W Line W	County Lea
---------------	--------------	-----------------	--------------	--------------	-------------------	---------------	------------------	---------------	---------------

**8. Proposed Bottom Hole Location**

UL - Lot P	Section 4	Township 14S	Range 33E	Lot Idn P	Feet From 400	N/S Line S	Feet From 100	E/W Line E	County Lea
---------------	--------------	-----------------	--------------	--------------	------------------	---------------	------------------	---------------	---------------

**9. Pool Information**

BAUM;UPPER PENN	4940
-----------------	------

**Additional Well Information**

11. Work Type New Well	12. Well Type OIL	13. Cable/Rotary	14. Lease Type State	15. Ground Level Elevation 4270
16. Multiple N	17. Proposed Depth 20054	18. Formation Bough	19. Contractor	20. Spud Date 7/1/2026
Depth to Ground water		Distance from nearest fresh water well		Distance to nearest surface water

We will be using a closed-loop system in lieu of lined pits

**21. Proposed Casing and Cement Program**

Type	Hole Size	Casing Size	Casing Weight/ft	Setting Depth	Sacks of Cement	Estimated TOC
Surf	17.5	13.375	54.5	1720	1022	0
Int1	12.25	9.625	40	4120	830	0
Int2	8.75	7.625	29.5	10260	650	0
Prod	6.75	5	18	20054	931	8300

**Casing/Cement Program: Additional Comments**

Production casing will use Water Based Mud (WBM) or Cut Brine
---

**22. Proposed Blowout Prevention Program**

Type	Working Pressure	Test Pressure	Manufacturer
Annular	5000	2500	TBD
Double Ram	5000	5000	TBD
Pipe	5000	5000	TBD

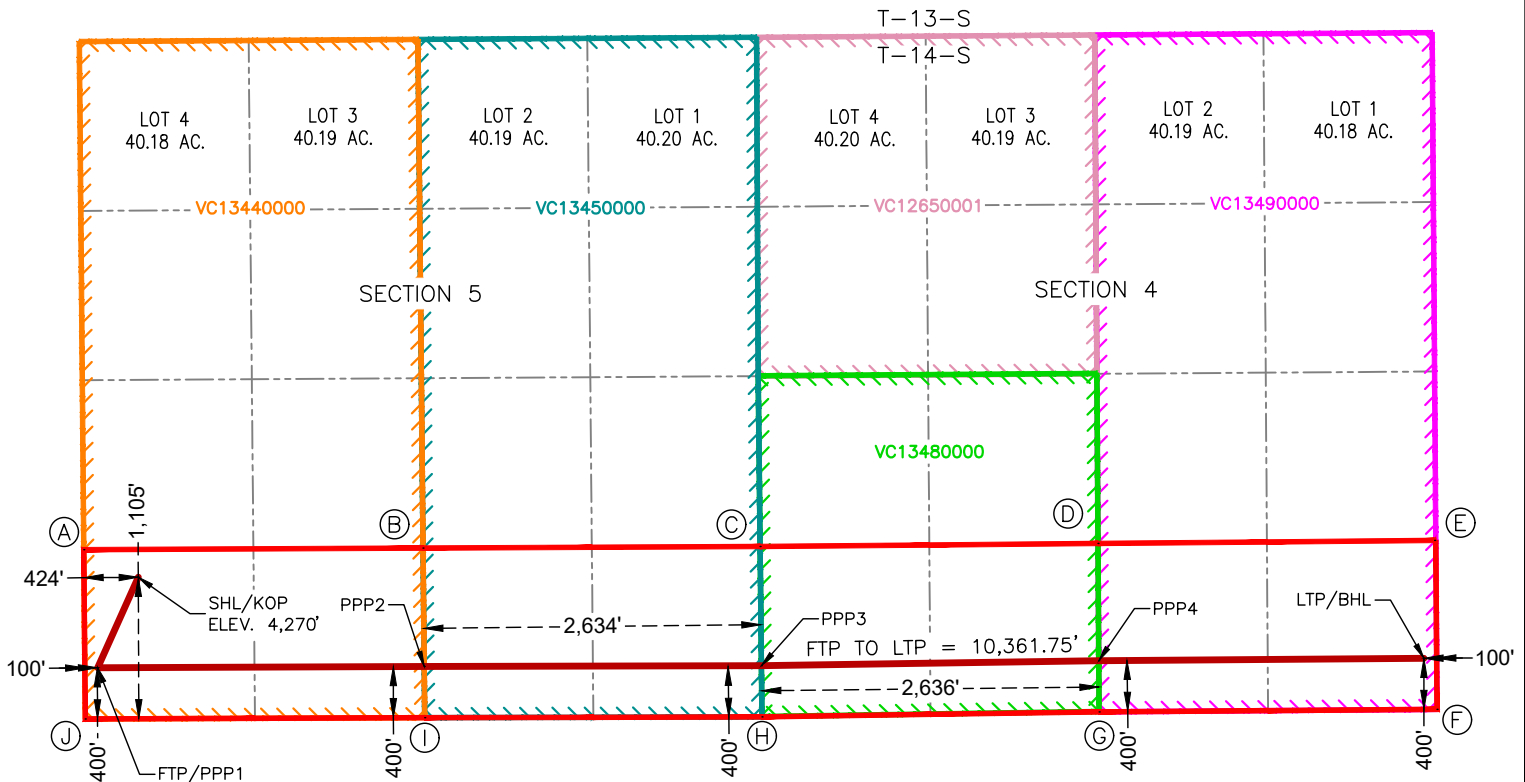
23. I hereby certify that the information given above is true and complete to the best of my knowledge and belief. I hereby certify that no additives containing PFAS chemicals will be added to the completion or recompletion of this well. I further certify I have complied with 19.15.14.9 (A) NMAC <input checked="" type="checkbox"/> and/or 19.15.14.9 (B) NMAC <input checked="" type="checkbox"/> if applicable.  Signature:	<b>OIL CONSERVATION DIVISION</b>	
	Printed Name: Electronically filed by Shaun Gordy	Approved By: Jeffrey Harrison
	Title: Senior V.P.	Title: Petroleum Specialist III
	Email Address: sgordy@sginterests.com	Approved Date: 3/31/2026      Expiration Date: 3/31/2028
	Date: 3/27/2026      Phone: 713-951-0100	Conditions of Approval Attached



ACREAGE DEDICATION PLATS

This grid represents a standard section. You may superimpose a non-standard section, or larger area, over this grid. Operators must outline the dedicated acreage in a red box, clearly show the well surface location and bottom hole location, if it is directionally drilled, with the dimensions from the section lines in the cardinal directions. If this is a horizontal wellbore show on this plat the location of the First Take Point and Last Take Point, and the point within the Completed interval (other than the First Take Point or Last Take Point) that is closest to any outer boundary of the tract.

Surveyors shall use the latest United States government survey or dependent resurvey. Well locations will be in reference to the New Mexico Principal Meridian. If the land is not surveyed, contact the OCD Engineering Bureau. Independent subdivision surveys will not be acceptable.



ATLAS 5 4 STATE COM 001H

**SURFACE HOLE LOCATION & KICK-OFF POINT**  
1,105' FSL & 424' FWL  
ELEV. = 4,270'

NAD 83 X = 752,338.46'  
NAD 83 Y = 775,313.77'  
NAD 83 LAT = 33.129411°  
NAD 83 LONG = -103.644083°  
NAD 27 X = 711,161.33'  
NAD 27 Y = 775,247.63'  
NAD 27 LAT = 33.129296°  
NAD 27 LONG = -103.643575°

**FIRST TAKE POINT & PENETRATION POINT 1**  
400' FSL & 100' FWL

NAD 83 X = 752,020.64'  
NAD 83 Y = 774,607.12'  
NAD 83 LAT = 33.127475°  
NAD 83 LONG = -103.645136°  
NAD 27 X = 710,843.51'  
NAD 27 Y = 774,540.98'  
NAD 27 LAT = 33.127359°  
NAD 27 LONG = -103.644629°

**PENETRATION POINT 2**  
400' FSL & 2,634' FEL

NAD 83 X = 754,572.20'  
NAD 83 Y = 774,617.12'  
NAD 83 LAT = 33.127456°  
NAD 83 LONG = -103.636802°  
NAD 27 X = 713,395.09'  
NAD 27 Y = 774,550.96'  
NAD 27 LAT = 33.127340°  
NAD 27 LONG = -103.636294°

**PENETRATION POINT 3**  
400' FSL & 0' FEL

NAD 83 X = 757,206.66'  
NAD 83 Y = 774,622.89'  
NAD 83 LAT = 33.127424°  
NAD 83 LONG = -103.628197°  
NAD 27 X = 716,029.59'  
NAD 27 Y = 774,556.71'  
NAD 27 LAT = 33.127308°  
NAD 27 LONG = -103.627690°

**PENETRATION POINT 4**  
400' FSL & 2,636' FWL

NAD 83 X = 759,842.08'  
NAD 83 Y = 774,662.28'  
NAD 83 LAT = 33.127483°  
NAD 83 LONG = -103.619588°  
NAD 27 X = 718,665.04'  
NAD 27 Y = 774,596.08'  
NAD 27 LAT = 33.127367°  
NAD 27 LONG = -103.619081°

**LAST TAKE POINT & BOTTOM HOLE LOCATION**  
400' FSL & 100' FEL

NAD 83 X = 762,382.01'  
NAD 83 Y = 774,680.79'  
NAD 83 LAT = 33.127486°  
NAD 83 LONG = -103.611292°  
NAD 27 X = 721,205.00'  
NAD 27 Y = 774,614.57'  
NAD 27 LAT = 33.127370°  
NAD 27 LONG = -103.610784°

**CORNER COORDINATES NEW MEXICO EAST - NAD 83**

POINT	NORTHING/EASTING
A	N:775,529.82' E:751,912.56'
B	N:775,541.89' E:754,562.97'
C	N:775,553.87' E:757,196.35'
D	N:775,577.65' E:759,836.15'
E	N:775,601.43' E:762,465.78'
F	N:774,281.53' E:762,484.90'
G	N:774,262.29' E:759,844.67'
H	N:774,222.92' E:757,211.10'
I	N:774,217.14' E:754,576.19'
J	N:774,206.74' E:751,924.15'

**CORNER COORDINATES NEW MEXICO EAST - NAD 27**

POINT	NORTHING/EASTING
A	N:775,463.68' E:710,735.43'
B	N:775,475.72' E:713,385.87'
C	N:775,487.69' E:716,019.28'
D	N:775,511.45' E:718,659.12'
E	N:775,535.21' E:721,288.78'
F	N:774,215.31' E:721,307.90'
G	N:774,196.09' E:718,667.63'
H	N:774,156.74' E:716,034.03'
I	N:774,150.98' E:713,399.08'
J	N:774,140.60' E:710,747.01'

**Gordy Oil Company**

100 Waugh Drive, Suite 400

Houston, Texas 77007

---

March 30, 2026

Energy, Minerals, and Natural Resources Department  
Attn: Oil Conservation Division  
1220 S. St. Francis Drive  
Santa Fe, NM 87505

Re: Overlapping Spacing Notice – Atlas 5 4 State Com 001H  
G & G OIL AND GAS, LLC (OGRID 272664)

Jeff,

Thank you for reaching out regarding the notice identifying G & G OIL AND GAS, LLC (“G&G”) in connection with the overlapping spacing unit. We have attempted to contact G&G regarding this matter but, to date, have not received a response. Based on our outreach efforts and related inquiry, G&G appears to no longer be an active operator and filed for bankruptcy in August 2025.

The wells associated with the spacing unit have not produced since 2018, and the underlying leases associated with those wells have expired. Within the past 12 months, we acquired 100% of the leasehold interest from the SLO.

We trust this is responsive to your inquiry. Please let me know if you would like to discuss this matter further.

Sincerely,



Matt Sansone  
Vice President of Land  
713.333.6548 - Office  
msansone@sginterests.com

---

Gordy Oil Company

(713) 951-0100

Fax: (713) 951-0191

Sante Fe Main Office  
Phone: (505) 476-3441

General Information  
Phone: (505) 629-6116

Online Phone Directory  
<https://www.emnrd.nm.gov/ocd/contact-us>

**State of New Mexico  
Energy, Minerals and Natural Resources  
Oil Conservation Division  
1220 S. St Francis Dr.  
Santa Fe, NM 87505**

Form APD Conditions

Permit 410720

**PERMIT CONDITIONS OF APPROVAL**

Operator Name and Address: GORDY OIL COMPANY [333330] 100 WAUGH DRIVE, STE 400 HOUSTON, TX 77007	API Number: 30-025-56084
	Well: Atlas 5 4 State Com #001H

OCD Reviewer	Condition
jeffrey.harrison	No additives containing PFAS chemicals will be added to the drilling fluids or completion fluids used during drilling, completions, or recompletions operations.
jeffrey.harrison	Cement is required to circulate on both surface and intermediate1 strings of casing.
jeffrey.harrison	If the method of isolation was not by circulation, a CBL must be performed; if strata isolation is not achieved, then remediation will be required before further operations.
jeffrey.harrison	File As Drilled C-102 and a directional Survey with C-104 completion packet.
jeffrey.harrison	Notify the OCD 24 hours prior to casing & cement.
jeffrey.harrison	A [C-103] Sub. Drilling (C-103N) is required within (10) days of spud.
jeffrey.harrison	Oil base muds are not to be used until fresh water zones are cased and cemented providing isolation from the oil or diesel. This includes synthetic oils. Oil based mud, drilling fluids and solids must be contained in a steel closed loop system.
jeffrey.harrison	Once the well is spud, to prevent ground water contamination through whole or partial conduits from the surface, the operator shall drill without interruption through the fresh water zone or zones and shall immediately set in cement the water protection string.



# Hydrogen Sulfide (H2S) Contingency Plan

## ATLAS 5 4 STATE COM 001H

*Lea County, New Mexico*

<b>Operator</b>	Gordy Oil Company	<b>Pool</b>	BAUM; UPPER PENN
<b>County</b>	Lea County, NM	<b>Ground Elevation</b>	4,270'
<b>Surface / KOP</b>	Sec. 5, T14S, R33E	<b>Bottom Hole</b>	Sec. 4, T14S, R33E

### 1. Purpose and Applicability

This Hydrogen Sulfide (H2S) Contingency Plan applies to drilling, completion, workover, testing, and related wellsite operations for ATLAS 5 4 STATE COM 001H in Lea County, New Mexico. The purpose of this plan is to provide site-specific procedures to alert and protect personnel and the public in the event of an H2S release.

### 2. Well Identification and Location Data

<b>Well Name</b>	ATLAS 5 4 STATE COM 001H
<b>Operator</b>	Gordy Oil Company   333330
<b>County</b>	Lea County, New Mexico
<b>Surface Hole / KOP</b>	Section 5, Township 14 South, Range 33 East; 1,105' FSL and 424' FWL; Lat. 33.129411; Long. -103.644083
<b>Well Path Summary</b>	Horizontal path extending from Section 5 into Section 4, with planned conductor and surface casing in Section 5.

### 3. Plan Activation

This plan shall be activated immediately upon any release or event that may create a hazardous H2S exposure condition, including any condition requiring evacuation, public protection, or emergency response measures.

At a minimum, the plan will be activated whenever a release may create:

- more than 100 ppm H2S in a public area; or
- more than 100 ppm H2S at 3,000 feet from the site of release.



Gas	Formula	Relative Gas Density (Air=1)	NIOSH REL	OSHA PEL	NIOSH IDLH
Hydrogen sulfide	H <sub>2</sub> S	1.19	10 ppm ceiling, 10 min	20 ppm ceiling; 50 ppm peak up to 10 min if no other measurable exposure	100 ppm
Sulfur dioxide	SO <sub>2</sub>	2.26	2 ppm TWA; 5 ppm STEL	5 ppm TWA	100 ppm

#### 4. Detection, Monitoring, and Emergency Equipment

- Personal H<sub>2</sub>S monitors for assigned personnel
- Fixed and/or portable area monitors
- Windssocks or wind indicators
- Audible and visual alarms
- SCBA / air packs and spare cylinders or cascade system
- Warning signs, barricades, and traffic control devices
- Communications equipment and first aid equipment

All monitors shall be maintained, calibrated, and tested in accordance with company procedures and manufacturer recommendations.

#### 5. Personnel Response and Site Control

- Notify all personnel on location immediately.
- Cease nonessential operations.
- Evacuate personnel upwind or crosswind to the designated muster point.
- Restrict access to the location and block entry at a safe point outside the applicable ROE.
- Allow entry into the controlled area only for trained personnel equipped with monitors and respiratory protection.
- Use the buddy system during response operations.
- Shut in or isolate the source only if it can be done safely.

#### 6. Ignition of Gas Source

If well control is lost and ignition of the gas is considered, Gordy Oil personnel shall take precautions to protect against exposure to sulfur dioxide (SO<sub>2</sub>). Any intentional ignition must be coordinated with the New Mexico Oil Conservation Division (NMOCD) and local officials. The New Mexico State Police may also be involved and may serve as Incident Command at the scene of a major release. Downwind areas shall be protected in the event of any gas ignition.



## 7. Public Protection Measures

If a release threatens any public area, public road, or occupied structure, the operator shall take appropriate protective actions, including notification of affected persons, evacuation or shelter-in-place instructions, traffic control or road closure coordination, emergency responder notification, and continued monitoring until the area is safe.

## 8. Notifications

Gordy Oil personnel shall coordinate with local and state agencies to ensure an appropriate response to any major release. The New Mexico Oil Conservation Division (NMOCD) must be notified as soon as possible, but no later than 4 hours after the release. Personnel shall be prepared to provide all available information, including the type and estimated volume of the release, wind direction, and release location. The following call list of essential and potential responders shall be used in the event of a release. Gordy Oil's response shall be coordinated with the State of New Mexico Hazardous Materials Emergency Response Plan (HMER).

## 9. Training and Drills

All personnel assigned to this site shall receive H2S awareness training appropriate to their duties. Personnel with response responsibilities shall be trained in H2S hazards and symptoms, monitor use, respiratory protection, evacuation and muster procedures, emergency notification, and restricted-entry response. Drills shall be conducted and documented.

## 10. Re-Entry Procedures

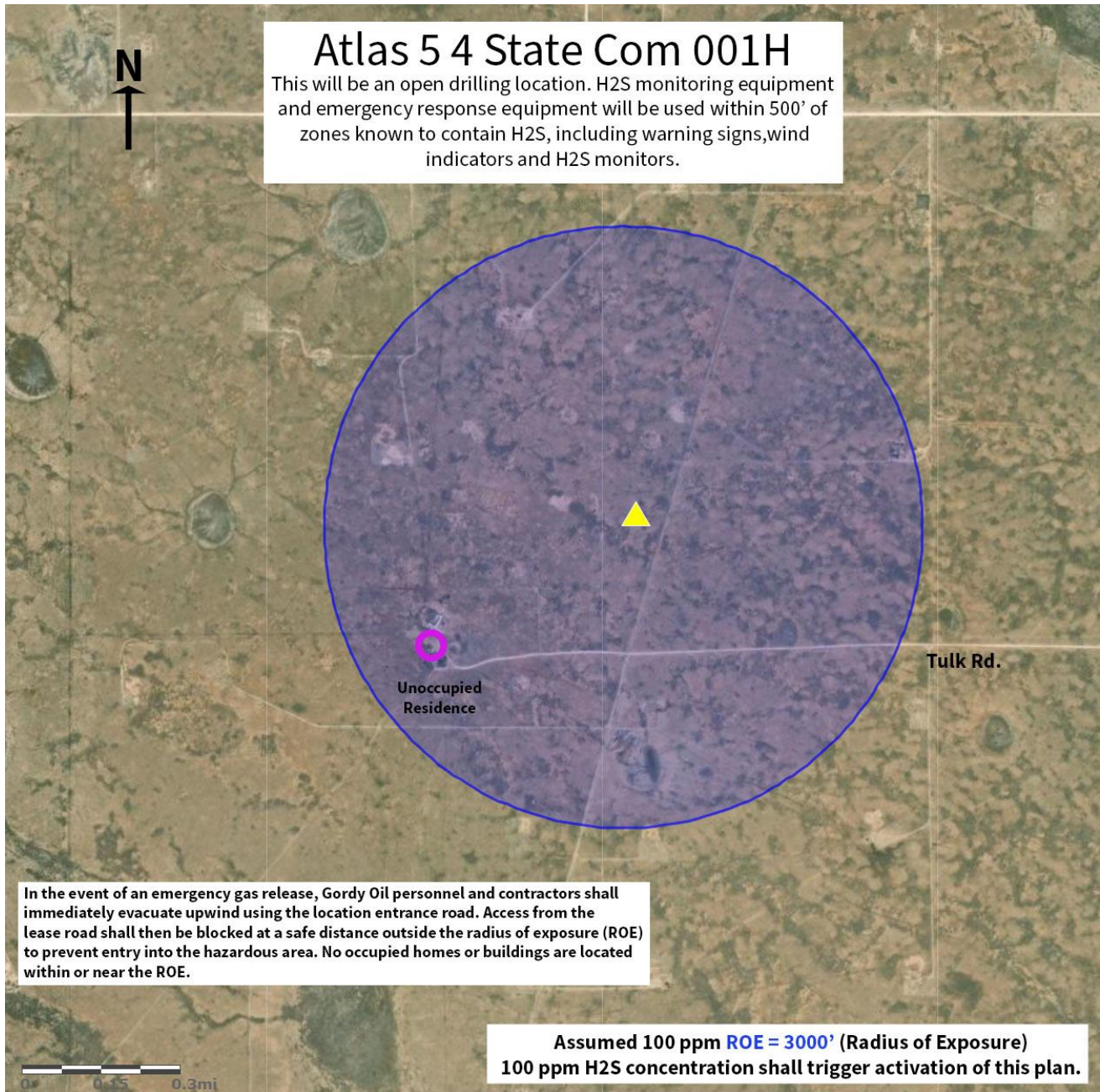
Re-entry shall not occur until the release has been controlled, atmospheric monitoring confirms safe conditions, required PPE is available and used as necessary, and site supervision authorizes re-entry.

## 11. Attachments / Exhibits

- Exhibit A – ROE Map
- Exhibit B – H2S Operations Plan
- Exhibit C – Emergency Contact List
- Exhibit D – Rig Location Layout



### Exhibit A





## Exhibit B

# H2S Operations Plan

## I. HYDROGEN SULFIDE (H2S) TRAINING

All personnel, whether regularly assigned, contracted, or employed on an unscheduled basis, shall receive training from a qualified instructor in the following areas prior to commencing drilling operations on the well:

1. The hazards and characteristics of hydrogen sulfide (H2S).
2. The proper use and maintenance of personal protective equipment and life support systems.
3. The proper use of H2S detectors, alarms, warning systems, briefing areas, evacuation procedures, and prevailing winds.
4. The proper techniques for first aid and rescue procedures.

In addition, supervisory personnel shall be trained in the following areas:

5. The effects of H2S on metal components. If high-tensile tubulars are to be used, personnel shall be trained in their special maintenance requirements.
6. Corrective action and shut-in procedures when drilling or reworking a well, including blowout prevention and well-control procedures.
7. The contents and requirements of the H2S Drilling Operation Plan.

Weekly H2S and well-control drills shall be conducted for all personnel in each crew.

## II. H2S SAFETY EQUIPMENT AND SYSTEMS

*Note: All H2S safety equipment and systems shall be installed, tested, and operational when drilling reaches a depth of 500 feet above, or three days prior to penetrating, the first zone containing or reasonably expected to contain H2S.*

### 1. Well Control Equipment

- A. Flare line.
- B. Choke manifold - remotely operated.
- C. Blind rams and pipe rams sized to accommodate all pipe sizes, with a properly sized closing unit.
- D. Auxiliary equipment may include, if applicable, an annular preventer and rotating head.
- E. Mud/gas separator.

### 2. Protective Equipment for Essential Personnel

Thirty-minute SCBA units shall be located at briefing areas identified on the well site diagram, with escape units available in the top doghouse. Because audible communication may be limited while wearing these units, hand signals shall be used.

### 3. H2S Detection and Monitoring Equipment

Portable H2S monitors shall be positioned on location for best coverage and response. Units shall include warning lights that activate at 10 ppm and audible alarms that activate at 15 ppm.

Typical sensor locations include:

- Bell nipple
- Possum belly / shale shaker
- Rig floor
- Choke manifold
- Cellar



## Exhibit B

Visual warning systems shall include:

- A. Wind direction indicators as shown on the well site diagram.
- B. Caution and danger signs posted on roads providing direct access to the location. Signs shall be high-visibility yellow with black lettering of sufficient size to be read at a reasonable distance from the immediate location. Bilingual signs shall be used when appropriate.

### 4. Mud Program

The mud program shall be designed to minimize the volume of H<sub>2</sub>S circulated to surface. Proper mud weight, safe drilling practices, and the use of H<sub>2</sub>S scavengers shall be used to minimize hazards when penetrating H<sub>2</sub>S-bearing zones.

### 5. Metallurgy

- A. All drill string, casing, tubing, wellhead, blowout preventer, drilling spool, kill lines, choke manifold lines, and valves shall be H<sub>2</sub>S trim.
- B. All elastomers used for packing and seals shall be H<sub>2</sub>S trim.

### 6. Communication

- A. Company personnel shall have access to cellular telephones in the field.
- B. Office land line or equivalent communications shall be maintained.

### 7. Well Testing

- A. If drill stem testing is performed, it shall be conducted with only the minimum number of personnel necessary to safely conduct the test. Testing shall occur during daylight hours, formation fluids shall not be flowed to surface, and all drill stem testing in an H<sub>2</sub>S environment shall use the closed-chamber method.
- B. If no drill stem testing is planned, this item may be marked not applicable.



**Exhibit C**

**Lea County Agency Call List**

**Gordy Oil Company Employee Contacts**

Name / Position	Phone Number	Alternate Number / Notes
Bud Guffey - Operations Manager	(970) 769-6082 - Cell	24/7 Contact Number – First Contact
Shaun Gordy - Owner	(713) 333-6522	Daytime Contact
Andrew Park - Drilling	(832) 790-7340 - Cell	24/7 Contact Number
Matt Sansone - Land	(682) 429-6642 - Cell	24/7 Contact Number

**Local / County / Field Contacts**

Agency / Contact	Phone Number	Use / Notes
Emergency - Police / Fire / EMS	911	Emergency dispatch.
Lea County Communications Authority (LCCA) Countywide dispatch	(575) 397-9265	Primary routing number for field incidents in Lea County; dispatches police, fire, EMS, and county resources countywide.
Lea County Sheriff's Office Primary local law enforcement	(575) 396-3611	Use as the primary local law-enforcement contact for this rural site.
Lea County Sheriff's Office - Hobbs Substation	(575) 393-2515	County substation line.
NM State Police - Hobbs District	(575) 392-5880	State law-enforcement backup / escalation.



### Exhibit C

Agency / Contact	Phone Number	Use / Notes
Lea County OEM / LEPC public contact	(575) 391-2983	County emergency management contact.
Lea County OEM Director	(575) 605-6561	Director contact listed by Lea County.
New Mexico Oil Conservation Division - Hobbs	(505) 629-6116	Current district office contact.
NMOCD Southeast NM emergency	(505) 670-8745	Regional emergency / after-hours contact.
BLM Hobbs Field Station	(575) 393-3612	Federal land contact, if applicable.

### State and Federal Notification Contacts

Agency / Contact	Phone Number	Use / Notes
NM Emergency Response Commission / SERC office	(505) 476-9600	Current office line.
NM SERC 24-hour line	(505) 827-9126	Secondary state reporting.
NMED 24/7 environmental emergency	(505) 827-9329	For active releases / spills.
NM State Land Office 24/7 environmental incident (State Trust Land only)	(505) 827-5894	Include if the well, road, pad, pipeline, or affected surface is on State Trust Land.
NM State Land Office - main (State Trust Land only)	(505) 827-5760	General State Land Office main line; conditional if State Trust Land is involved.
National Response Center (NRC)	(800) 424-8802	Primary federal spill / hazardous release reporting line.



**Exhibit C**

Agency / Contact	Phone Number	Use / Notes
National Pollution Funds Center (NPFC) External Coordination	(202) 795-6958	Current public contact line.
NPFC - Oil Spill / Claims	(800) 280-7118	Claims / oil spill funding contact.

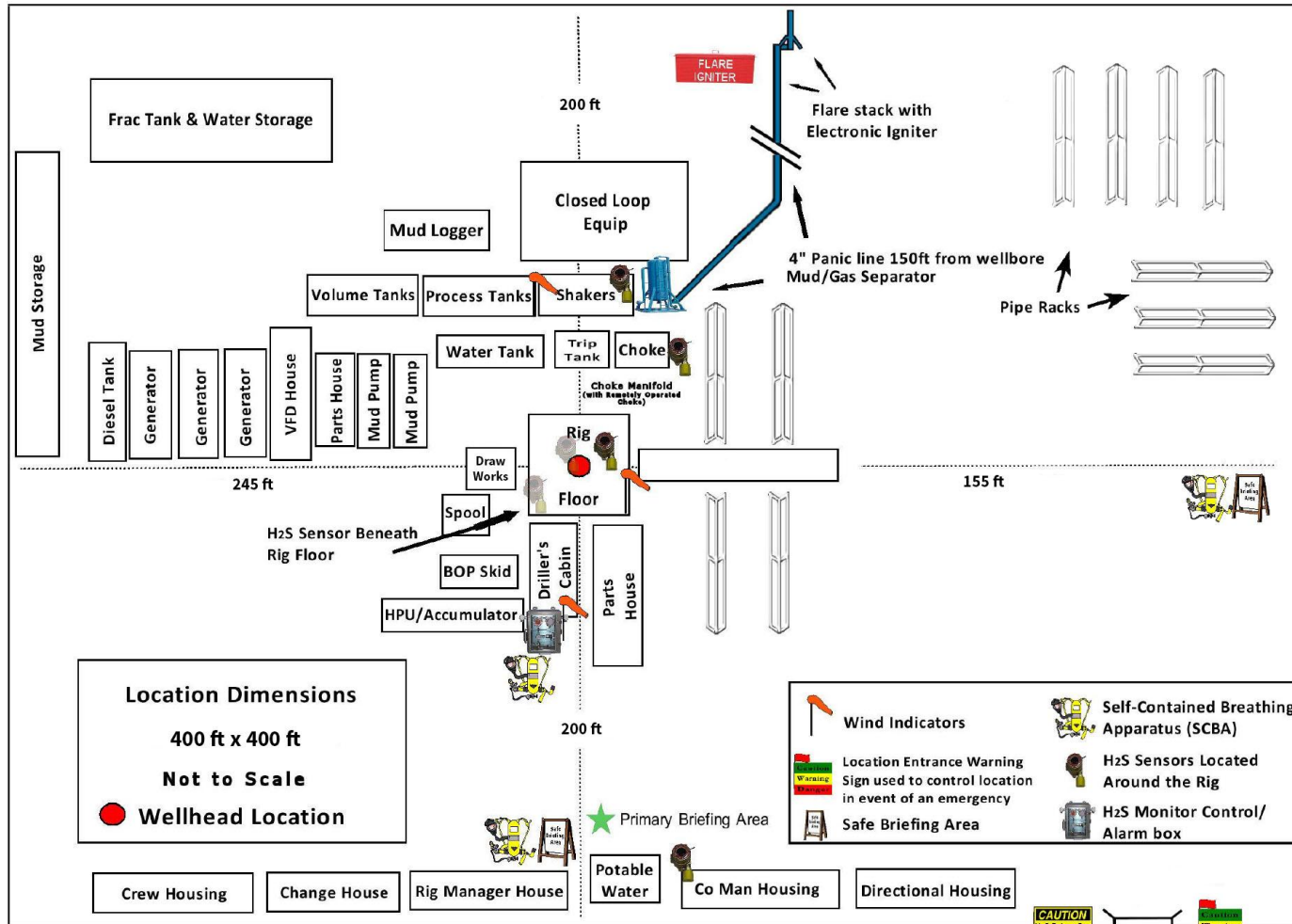
**Specialized Emergency Services**

Agency / Contact	Phone Number	Use / Notes
Wild Well Control	(281) 784-4700	Current published company contact.
Poison Control (24/7)	(800) 222-1222	National poison help line.
Air Ambulance Dispatch - Lea County	(575) 397-9265	Route through LCCA / dispatch rather than relying on older vendor-specific numbers.



### Exhibit D

# Gordy Oil Company - Well Pad Rig Location Safety Equipment Location



State of New Mexico  
 Energy, Minerals and Natural Resources Department

Submit Electronically  
 Via E-permitting

Oil Conservation Division  
 1220 South St. Francis Dr.  
 Santa Fe, NM 87505

## NATURAL GAS MANAGEMENT PLAN

This Natural Gas Management Plan must be submitted with each Application for Permit to Drill (APD) for a new or recompleted well.

### Section 1 – Plan Description Effective May 25, 2021

**I. Operator:** \_\_\_\_\_ **OGRID:** \_\_\_\_\_ **Date:** \_\_\_\_/\_\_\_\_/\_\_\_\_

**II. Type:**  Original  Amendment due to  19.15.27.9.D(6)(a) NMAC  19.15.27.9.D(6)(b) NMAC  Other.

If Other, please describe: \_\_\_\_\_

**III. Well(s):** Provide the following information for each new or recompleted well or set of wells proposed to be drilled or proposed to be recompleted from a single well pad or connected to a central delivery point.

Well Name	API	ULSTR	Footages	Anticipated Oil BBL/D	Anticipated Gas MCF/D	Anticipated Produced Water BBL/D
See Attached						

**IV. Central Delivery Point Name:** \_\_\_\_\_ [See 19.15.27.9(D)(1) NMAC]

**V. Anticipated Schedule:** Provide the following information for each new or recompleted well or set of wells proposed to be drilled or proposed to be recompleted from a single well pad or connected to a central delivery point.

Well Name	API	Spud Date	TD Reached Date	Completion Commencement Date	Initial Flow Back Date	First Production Date
See Attached						

**VI. Separation Equipment:**  Attach a complete description of how Operator will size separation equipment to optimize gas capture.

**VII. Operational Practices:**  Attach a complete description of the actions Operator will take to comply with the requirements of Subsection A through F of 19.15.27.8 NMAC.

**VIII. Best Management Practices:**  Attach a complete description of Operator’s best management practices to minimize venting during active and planned maintenance.

**Section 2 – Enhanced Plan**

**EFFECTIVE APRIL 1, 2022**

Beginning April 1, 2022, an operator that is not in compliance with its statewide natural gas capture requirement for the applicable reporting area must complete this section.

Operator certifies that it is not required to complete this section because Operator is in compliance with its statewide natural gas capture requirement for the applicable reporting area.

**IX. Anticipated Natural Gas Production:**

Well	API	Anticipated Average Natural Gas Rate MCF/D	Anticipated Volume of Natural Gas for the First Year MCF

**X. Natural Gas Gathering System (NGGS):**

Operator	System	ULSTR of Tie-in	Anticipated Gathering Start Date	Available Maximum Daily Capacity of System Segment Tie-in

**XI. Map.**  Attach an accurate and legible map depicting the location of the well(s), the anticipated pipeline route(s) connecting the production operations to the existing or planned interconnect of the natural gas gathering system(s), and the maximum daily capacity of the segment or portion of the natural gas gathering system(s) to which the well(s) will be connected.

**XII. Line Capacity.** The natural gas gathering system  will  will not have capacity to gather 100% of the anticipated natural gas production volume from the well prior to the date of first production.

**XIII. Line Pressure.** Operator  does  does not anticipate that its existing well(s) connected to the same segment, or portion, of the natural gas gathering system(s) described above will continue to meet anticipated increases in line pressure caused by the new well(s).

Attach Operator’s plan to manage production in response to the increased line pressure.

**XIV. Confidentiality:**  Operator asserts confidentiality pursuant to Section 71-2-8 NMSA 1978 for the information provided in Section 2 as provided in Paragraph (2) of Subsection D of 19.15.27.9 NMAC, and attaches a full description of the specific information for which confidentiality is asserted and the basis for such assertion.

### Section 3 - Certifications

Effective May 25, 2021

Operator certifies that, after reasonable inquiry and based on the available information at the time of submittal:

Operator will be able to connect the well(s) to a natural gas gathering system in the general area with sufficient capacity to transport one hundred percent of the anticipated volume of natural gas produced from the well(s) commencing on the date of first production, taking into account the current and anticipated volumes of produced natural gas from other wells connected to the pipeline gathering system; or

Operator will not be able to connect to a natural gas gathering system in the general area with sufficient capacity to transport one hundred percent of the anticipated volume of natural gas produced from the well(s) commencing on the date of first production, taking into account the current and anticipated volumes of produced natural gas from other wells connected to the pipeline gathering system.

*If Operator checks this box, Operator will select one of the following:*

**Well Shut-In.**  Operator will shut-in and not produce the well until it submits the certification required by Paragraph (4) of Subsection D of 19.15.27.9 NMAC; or

**Venting and Flaring Plan.**  Operator has attached a venting and flaring plan that evaluates and selects one or more of the potential alternative beneficial uses for the natural gas until a natural gas gathering system is available, including:

- (a) power generation on lease;
- (b) power generation for grid;
- (c) compression on lease;
- (d) liquids removal on lease;
- (e) reinjection for underground storage;
- (f) reinjection for temporary storage;
- (g) reinjection for enhanced oil recovery;
- (h) fuel cell production; and
- (i) other alternative beneficial uses approved by the division.

### Section 4 - Notices


1. If, at any time after Operator submits this Natural Gas Management Plan and before the well is spud:

(a) Operator becomes aware that the natural gas gathering system it planned to connect the well(s) to has become unavailable or will not have capacity to transport one hundred percent of the production from the well(s), no later than 20 days after becoming aware of such information, Operator shall submit for OCD's approval a new or revised venting and flaring plan containing the information specified in Paragraph (5) of Subsection D of 19.15.27.9 NMAC; or

(b) Operator becomes aware that it has, cumulatively for the year, become out of compliance with its baseline natural gas capture rate or natural gas capture requirement, no later than 20 days after becoming aware of such information, Operator shall submit for OCD's approval a new or revised Natural Gas Management Plan for each well it plans to spud during the next 90 days containing the information specified in Paragraph (2) of Subsection D of 19.15.27.9 NMAC, and shall file an update for each Natural Gas Management Plan until Operator is back in compliance with its baseline natural gas capture rate or natural gas capture requirement.

2. OCD may deny or conditionally approve an APD if Operator does not make a certification, fails to submit an adequate venting and flaring plan which includes alternative beneficial uses for the anticipated volume of natural gas produced, or if OCD determines that Operator will not have adequate natural gas takeaway capacity at the time a well will be spud.

I certify that, after reasonable inquiry, the statements in and attached to this Natural Gas Management Plan are true and correct to the best of my knowledge and acknowledge that a false statement may be subject to civil and criminal penalties under the Oil and Gas Act.

Signature: 
Printed Name: Matt Sansone
Title: VP of Land
E-mail Address:
Date:
Phone:
<b>OIL CONSERVATION DIVISION</b> <b>(Only applicable when submitted as a standalone form)</b>
Approved By:
Title:
Approval Date:
Conditions of Approval:

**Natural Gas Management Plan**  
**GORDY OIL COMPANY**  
**Atlas 5 4 State Com 001H**  
**Lea County, NM**

**Natural Gas Management Plan**  
**Items VI-VIII**

**VI. Separation Equipment:**

Gordy Oil Company will utilize a "stage separation" process in which oil and gas separation is carried out through a series of separators operating at successively reduced pressures. Hydrocarbon liquids are produced into a high-pressure inlet separator (if needed), then carried through one or more lower pressure separation vessels before entering the storage tanks. The purpose of this separation process is to attain maximum recovery of liquid hydrocarbons from the fluids and allow maximum capture of produced gas into the sales pipeline. Gordy utilizes a series of Low-Pressure Compression units to capture gas off the staged separation and send it to the sales pipeline. This process minimizes the amount of flash gas that enters the end-stage storage tanks that is subsequently vented or flared.

**VII. Operational Practices:**

Gordy Oil Company will employ best management practices and control technologies to maximize the recovery and minimize waste of natural gas through venting and flaring.

Drilling Operations

- Gordy will utilize flares and/or combustors to capture and control natural gas, where technically feasible. If flaring is deemed technically in-feasible, Gordy will employ best management practices to minimize or reduce venting to the extent possible.

Completions/Recompletions Operations

- Gordy will utilize Green Completion methods to capture gas produced during well completions that is otherwise vented or flared. If capture is technically in-feasible, flares and/or combustors will be used to capture and control flow back fluids entering into frac tanks during initial flowback. Upon indication of first measurable hydrocarbon volumes, Gordy will turn operations to onsite separation vessels and flow to the gathering pipeline.

Production Operations

- Gordy will take every practical effort to minimize waste of natural gas through venting and flaring by:
  - Designing and constructing facilities in a manner consistent to achieve maximum capture and control of hydrocarbon liquids & produced gas.
  - Utilizing a closed-loop capture system to collect and route produced gas to sales line via low pressure compression, or to a flare/combustor.
  - Flaring in lieu of venting, where technically feasible.
  - Utilizing auto-ignitors or continuous pilots, with thermocouples connected to Scada, to quickly detect and resolve issues related to malfunctioning flares/combustors.
  - Employ the use of automatic tank gauging to minimize storage tank venting during loading events.
  - Installing air-driven or electric-driven pneumatics & combustion engines, where technically feasible to minimize venting to the atmosphere.

**Natural Gas Management Plan**  
**GORDY OIL COMPANY**  
**Atlas 5 4 State Com 001H**  
**Lea County, NM**

- Confirm equipment is properly maintained and repaired through a preventative maintenance and repair program to ensure equipment meets all manufacturer specifications.
- Conduct and document AVO inspections on the frequency set forth in Part 27 to detect and repair any onsite leaks as quickly and efficiently as is feasible.

**VIII. Best Management Practices during Maintenance:**

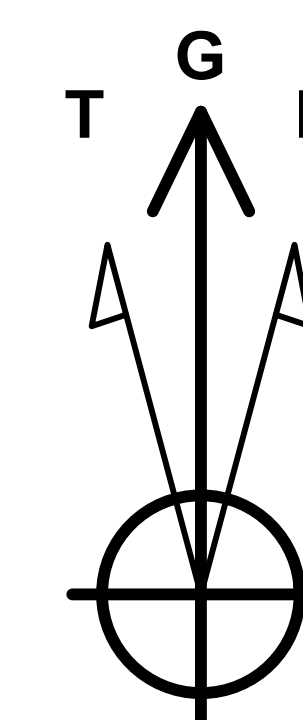
- Gordy Oil Company will utilize best management practices to minimize venting during active and planned maintenance activities. Gordy is operating under guidance that production facilities permitted under NOI permits have no provisions to allow high pressure flaring and high-pressure flaring is only allowed in disruption scenarios so long as the duration is less than eight hours. When technically feasible, flaring during maintenance activities will be utilized in lieu of venting to the atmosphere. Gordy will work with third-party operators during scheduled maintenance of downstream pipeline or processing plants to address those events ahead of time to minimize venting. Actions considered include identifying alternative capture approaches or planning to temporarily reduce production or shut in the well to address these circumstances.



Company: SG Interests / Gordy Oil Co  
 Field: LEA Co. NM  
 Location: Atlas 5 4 State Com 001H  
 Well: Atlas 5 4 State Com 001H OH  
 Plan: **Plan 3**  
 GL:4270' KB:25' @ 4295.00usft

PROJECT DETAILS: Lea Co. NM

Geodetic System: US State Plane 1927 (Exact solution)  
 Datum: NAD 1927 (NADCON CONUS)  
 Ellipsoid: Clarke 1866  
 Zone: New Mexico East 3001  
 System Datum: Mean Sea Level



Azimuths to Grid North  
 True North: -0.38°  
 Magnetic North: 5.92°

Magnetic Field  
 Strength: 47462.8nT  
 Dip Angle: 60.53°  
 Date: 2/12/2026  
 Model: IGRF2025



WELL DETAILS: Atlas 5 4 State Com 001H

GL:4270' KB:25' @ 4295.00usft		4270.00	
Northing	Easting	Latitude	Longitude
775247.63	711161.33	33.129296	-103.643575

SECTION DETAILS

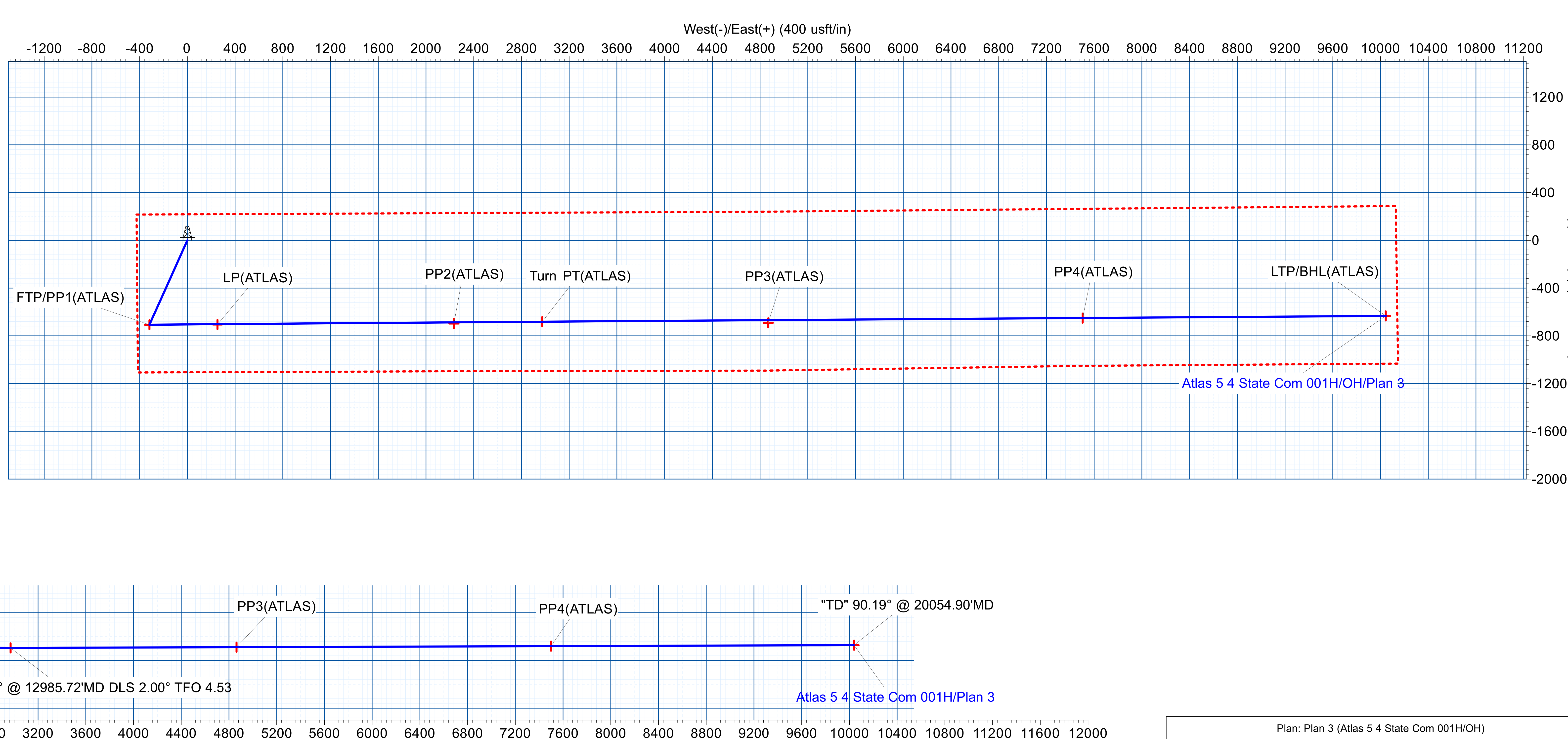
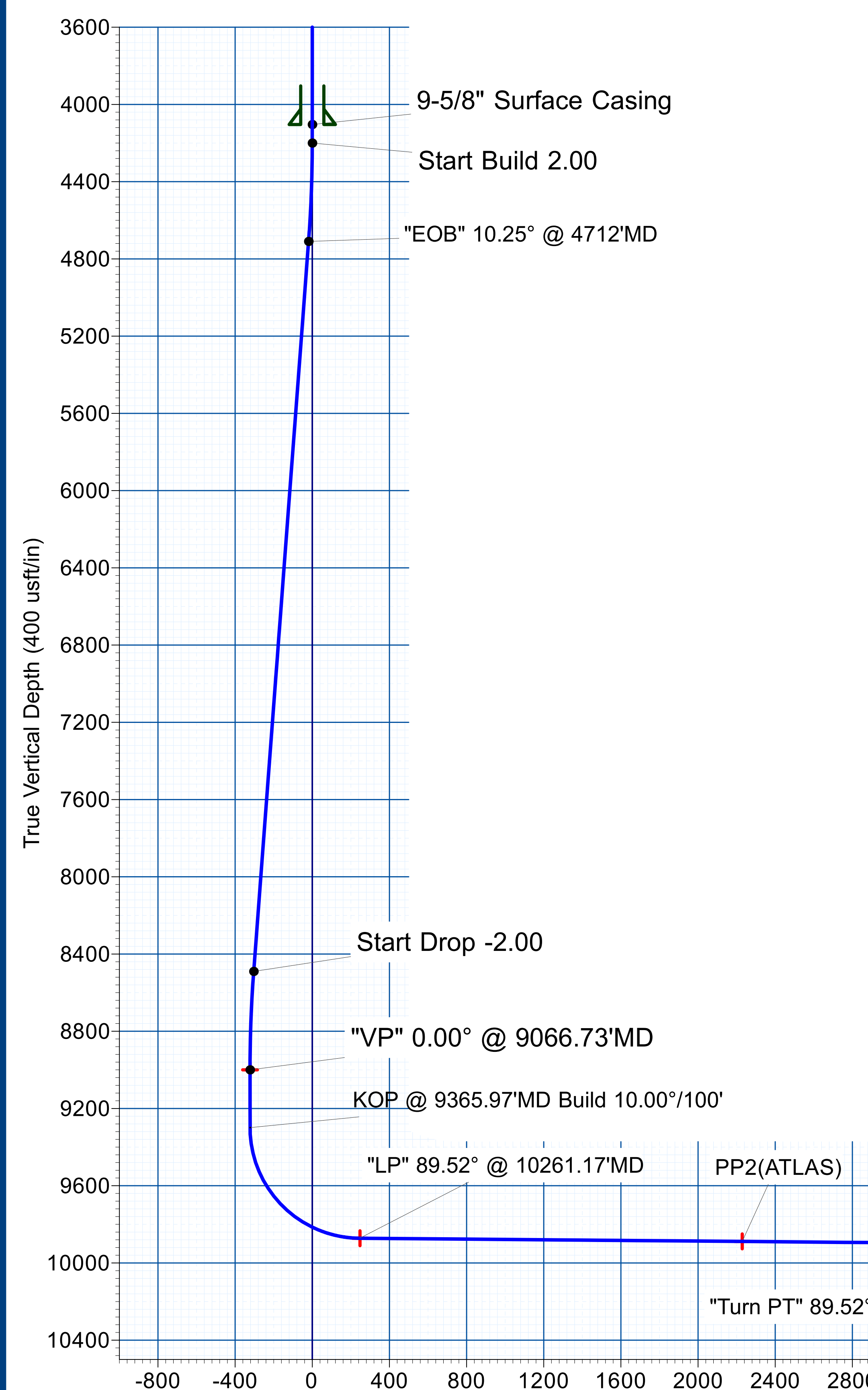
MD	Inc	Azi	TVD	+N/-S	+E/-W	Dleg	TFace	VSect	Target
0.00	0.00	0.00	0.00	0.00	0.00	0.00	0.00	0.00	
4200.00	0.00	0.00	4200.00	0.00	0.00	0.00	0.00	0.00	
4712.33	10.25	204.22	4709.61	-41.67	-18.74	2.00	204.22	-19.02	
8554.40	10.25	204.22	8490.39	-664.98	-299.08	0.00	0.00	-303.60	
9066.73	0.00	0.00	9000.00	-706.65	-317.82	2.00	180.00	-322.62	FTP/PP1(ATLAS)
9365.97	0.00	0.00	9299.24	-706.65	-317.82	0.00	0.00	-322.62	
10261.17	89.52	89.56	9872.18	-702.26	250.32	10.00	89.56	245.53	
12985.72	89.52	89.56	9895.00	-681.19	2974.70	0.00	0.00	2969.99	Turn PT(ATLAS)
13019.22	90.19	89.61	9895.09	-680.95	3008.20	2.00	4.53	3003.49	
20054.90	90.19	89.61	9872.00	-633.06	10043.67	0.00	0.00	10039.13	LTP/BHL(ATLAS)

CASING DETAILS

TVD	MD	Name
365.00	365.00	13-3/8" Conductor Casing
4104.00	4104.00	9-5/8" Surface Casing

DESIGN TARGET DETAILS

Name	TVD	+N/-S	+E/-W	Northing	Easting	Latitude	Longitude
FTP/PP1(ATLAS)	9000.00	-706.65	-317.82	774540.98	710843.51	33.127359	-103.644629
LP(ATLAS)	9872.00	-704.92	252.34	774542.71	711413.67	33.127354	-103.642766
LTP/BHL(ATLAS)	9872.00	-633.06	10043.67	774614.57	721205.00	33.127370	-103.610784
PP4(ATLAS)	9880.33	-651.55	7503.71	774596.08	718665.04	33.127367	-103.619081
PP2(ATLAS)	9888.79	-696.67	2233.76	774550.96	713395.09	33.127340	-103.636294
PP3(ATLAS)	9888.98	-690.92	4868.26	774556.71	716029.59	33.127308	-103.627690
Turn PT(ATLAS)	9895.00	-681.19	2974.70	774566.44	714136.03	33.127369	-103.633874



# **SG Interests / Gordy Oil Co**

**Lea Co. NM**

**Atlas 5 4 State Com 001H**

**Atlas 5 4 State Com 001H**

**OH**

**Plan: Plan 3**

## **Standard Planning Report**

**17 February, 2026**

Planning Report

<b>Database:</b>	EDM_WA	<b>Local Co-ordinate Reference:</b>	Well Atlas 5 4 State Com 001H
<b>Company:</b>	SG Interests / Gordy Oil Co	<b>TVD Reference:</b>	GL:4270' KB:25' @ 4295.00usft
<b>Project:</b>	Lea Co. NM	<b>MD Reference:</b>	GL:4270' KB:25' @ 4295.00usft
<b>Site:</b>	Atlas 5 4 State Com 001H	<b>North Reference:</b>	Grid
<b>Well:</b>	Atlas 5 4 State Com 001H	<b>Survey Calculation Method:</b>	Minimum Curvature
<b>Wellbore:</b>	OH		
<b>Design:</b>	Plan 3		

<b>Project</b>	Lea Co. NM		
<b>Map System:</b>	US State Plane 1927 (Exact solution)	<b>System Datum:</b>	Mean Sea Level
<b>Geo Datum:</b>	NAD 1927 (NADCON CONUS)		
<b>Map Zone:</b>	New Mexico East 3001		

<b>Site</b>	Atlas 5 4 State Com 001H				
<b>Site Position:</b>		<b>Northing:</b>	775,247.63 usft	<b>Latitude:</b>	33.129296
<b>From:</b>	Map	<b>Easting:</b>	711,161.33 usft	<b>Longitude:</b>	-103.643576
<b>Position Uncertainty:</b>	0.00 usft	<b>Slot Radius:</b>	13-3/16 "		

<b>Well</b>	Atlas 5 4 State Com 001H					
<b>Well Position</b>	<b>+N/-S</b>	0.00 usft	<b>Northing:</b>	775,247.63 usft	<b>Latitude:</b>	33.129296
	<b>+E/-W</b>	0.00 usft	<b>Easting:</b>	711,161.33 usft	<b>Longitude:</b>	-103.643576
<b>Position Uncertainty</b>		0.00 usft	<b>Wellhead Elevation:</b>	usft	<b>Ground Level:</b>	4,270.00 usft
<b>Grid Convergence:</b>	0.38 °					

<b>Wellbore</b>	OH				
<b>Magnetics</b>	<b>Model Name</b>	<b>Sample Date</b>	<b>Declination (°)</b>	<b>Dip Angle (°)</b>	<b>Field Strength (nT)</b>
	IGRF2025	2/12/2026	6.30	60.53	47,462.75598020

<b>Design</b>	Plan 3			
<b>Audit Notes:</b>				
<b>Version:</b>	<b>Phase:</b>	PLAN	<b>Tie On Depth:</b>	0.00
<b>Vertical Section:</b>	<b>Depth From (TVD) (usft)</b>	<b>+N/-S (usft)</b>	<b>+E/-W (usft)</b>	<b>Direction (°)</b>
	0.00	0.00	0.00	89.61

<b>Plan Survey Tool Program</b>	<b>Date</b>	2/17/2026		
<b>Depth From (usft)</b>	<b>Depth To (usft)</b>	<b>Survey (Wellbore)</b>	<b>Tool Name</b>	<b>Remarks</b>
1	0.00	20,054.90 Plan 3 (OH)	MWD	
			OWSG MWD - Standard	

Planning Report

<b>Database:</b>	EDM_WA	<b>Local Co-ordinate Reference:</b>	Well Atlas 5 4 State Com 001H
<b>Company:</b>	SG Interests / Gordy Oil Co	<b>TVD Reference:</b>	GL:4270' KB:25' @ 4295.00usft
<b>Project:</b>	Lea Co. NM	<b>MD Reference:</b>	GL:4270' KB:25' @ 4295.00usft
<b>Site:</b>	Atlas 5 4 State Com 001H	<b>North Reference:</b>	Grid
<b>Well:</b>	Atlas 5 4 State Com 001H	<b>Survey Calculation Method:</b>	Minimum Curvature
<b>Wellbore:</b>	OH		
<b>Design:</b>	Plan 3		

Plan Sections										
Measured Depth (usft)	Inclination (°)	Azimuth (°)	Vertical Depth (usft)	+N/-S (usft)	+E/-W (usft)	Dogleg Rate (°/100usft)	Build Rate (°/100usft)	Turn Rate (°/100usft)	TFO (°)	Target
0.00	0.00	0.00	0.00	0.00	0.00	0.00	0.00	0.00	0.00	
4,200.00	0.00	0.00	4,200.00	0.00	0.00	0.00	0.00	0.00	0.00	
4,712.33	10.25	204.22	4,709.61	-41.67	-18.74	2.00	2.00	0.00	204.22	
8,554.40	10.25	204.22	8,490.39	-664.98	-299.08	0.00	0.00	0.00	0.00	
9,066.73	0.00	0.00	9,000.00	-706.65	-317.82	2.00	-2.00	0.00	180.00	FTP/PP1(ATLAS)
9,365.97	0.00	0.00	9,299.24	-706.65	-317.82	0.00	0.00	0.00	0.00	
10,261.17	89.52	89.56	9,872.18	-702.26	250.32	10.00	10.00	0.00	89.56	
12,985.72	89.52	89.56	9,895.00	-681.19	2,974.70	0.00	0.00	0.00	0.00	Turn PT(ATLAS)
13,019.22	90.19	89.61	9,895.09	-680.95	3,008.20	2.00	1.99	0.16	4.53	
20,054.90	90.19	89.61	9,872.00	-633.06	10,043.67	0.00	0.00	0.00	0.00	LTP/BHL(ATLAS)

Planning Report

<b>Database:</b>	EDM_WA	<b>Local Co-ordinate Reference:</b>	Well Atlas 5 4 State Com 001H
<b>Company:</b>	SG Interests / Gordy Oil Co	<b>TVD Reference:</b>	GL:4270' KB:25' @ 4295.00usft
<b>Project:</b>	Lea Co. NM	<b>MD Reference:</b>	GL:4270' KB:25' @ 4295.00usft
<b>Site:</b>	Atlas 5 4 State Com 001H	<b>North Reference:</b>	Grid
<b>Well:</b>	Atlas 5 4 State Com 001H	<b>Survey Calculation Method:</b>	Minimum Curvature
<b>Wellbore:</b>	OH		
<b>Design:</b>	Plan 3		

Planned Survey										
Measured Depth (usft)	Inclination (°)	Azimuth (°)	Vertical Depth (usft)	+N/-S (usft)	+E/-W (usft)	Vertical Section (usft)	Dogleg Rate (°/100usft)	Build Rate (°/100usft)	Turn Rate (°/100usft)	
4,200.00	0.00	0.00	4,200.00	0.00	0.00	0.00	0.00	0.00	0.00	0.00
<b>Start Build 2.00</b>										
4,300.00	2.00	204.22	4,299.98	-1.59	-0.72	-0.73	2.00	2.00	0.00	
4,400.00	4.00	204.22	4,399.84	-6.36	-2.86	-2.91	2.00	2.00	0.00	
4,500.00	6.00	204.22	4,499.45	-14.31	-6.44	-6.53	2.00	2.00	0.00	
4,600.00	8.00	204.22	4,598.70	-25.43	-11.44	-11.61	2.00	2.00	0.00	
4,700.00	10.00	204.22	4,697.47	-39.69	-17.85	-18.12	2.00	2.00	0.00	
4,712.33	10.25	204.22	4,709.61	-41.67	-18.74	-19.02	2.00	2.00	0.00	
<b>"EOB" 10.25° @ 4712'MD</b>										
4,800.00	10.25	204.22	4,795.88	-55.89	-25.14	-25.52	0.00	0.00	0.00	
4,900.00	10.25	204.22	4,894.28	-72.12	-32.43	-32.92	0.00	0.00	0.00	
5,000.00	10.25	204.22	4,992.69	-88.34	-39.73	-40.33	0.00	0.00	0.00	
5,100.00	10.25	204.22	5,091.09	-104.56	-47.03	-47.74	0.00	0.00	0.00	
5,200.00	10.25	204.22	5,189.50	-120.79	-54.32	-55.14	0.00	0.00	0.00	
5,300.00	10.25	204.22	5,287.90	-137.01	-61.62	-62.55	0.00	0.00	0.00	
5,400.00	10.25	204.22	5,386.31	-153.23	-68.92	-69.96	0.00	0.00	0.00	
5,500.00	10.25	204.22	5,484.71	-169.46	-76.21	-77.37	0.00	0.00	0.00	
5,600.00	10.25	204.22	5,583.12	-185.68	-83.51	-84.77	0.00	0.00	0.00	
5,700.00	10.25	204.22	5,681.52	-201.90	-90.81	-92.18	0.00	0.00	0.00	
5,800.00	10.25	204.22	5,779.93	-218.13	-98.10	-99.59	0.00	0.00	0.00	
5,900.00	10.25	204.22	5,878.33	-234.35	-105.40	-106.99	0.00	0.00	0.00	
6,000.00	10.25	204.22	5,976.74	-250.57	-112.70	-114.40	0.00	0.00	0.00	
6,100.00	10.25	204.22	6,075.14	-266.80	-119.99	-121.81	0.00	0.00	0.00	
6,200.00	10.25	204.22	6,173.55	-283.02	-127.29	-129.21	0.00	0.00	0.00	
6,300.00	10.25	204.22	6,271.95	-299.24	-134.59	-136.62	0.00	0.00	0.00	
6,400.00	10.25	204.22	6,370.36	-315.47	-141.88	-144.03	0.00	0.00	0.00	
6,500.00	10.25	204.22	6,468.76	-331.69	-149.18	-151.43	0.00	0.00	0.00	
6,600.00	10.25	204.22	6,567.17	-347.91	-156.48	-158.84	0.00	0.00	0.00	
6,700.00	10.25	204.22	6,665.57	-364.14	-163.77	-166.25	0.00	0.00	0.00	
6,800.00	10.25	204.22	6,763.98	-380.36	-171.07	-173.65	0.00	0.00	0.00	
6,900.00	10.25	204.22	6,862.38	-396.58	-178.37	-181.06	0.00	0.00	0.00	
7,000.00	10.25	204.22	6,960.79	-412.81	-185.66	-188.47	0.00	0.00	0.00	
7,100.00	10.25	204.22	7,059.19	-429.03	-192.96	-195.87	0.00	0.00	0.00	
7,200.00	10.25	204.22	7,157.60	-445.25	-200.25	-203.28	0.00	0.00	0.00	
7,300.00	10.25	204.22	7,256.00	-461.48	-207.55	-210.69	0.00	0.00	0.00	
7,400.00	10.25	204.22	7,354.41	-477.70	-214.85	-218.09	0.00	0.00	0.00	
7,500.00	10.25	204.22	7,452.81	-493.92	-222.14	-225.50	0.00	0.00	0.00	
7,600.00	10.25	204.22	7,551.22	-510.15	-229.44	-232.91	0.00	0.00	0.00	
7,700.00	10.25	204.22	7,649.62	-526.37	-236.74	-240.31	0.00	0.00	0.00	
7,800.00	10.25	204.22	7,748.03	-542.59	-244.03	-247.72	0.00	0.00	0.00	
7,900.00	10.25	204.22	7,846.43	-558.82	-251.33	-255.13	0.00	0.00	0.00	
8,000.00	10.25	204.22	7,944.84	-575.04	-258.63	-262.54	0.00	0.00	0.00	
8,100.00	10.25	204.22	8,043.24	-591.26	-265.92	-269.94	0.00	0.00	0.00	
8,200.00	10.25	204.22	8,141.65	-607.49	-273.22	-277.35	0.00	0.00	0.00	
8,300.00	10.25	204.22	8,240.05	-623.71	-280.52	-284.76	0.00	0.00	0.00	
8,400.00	10.25	204.22	8,338.46	-639.93	-287.81	-292.16	0.00	0.00	0.00	
8,500.00	10.25	204.22	8,436.86	-656.16	-295.11	-299.57	0.00	0.00	0.00	
8,554.40	10.25	204.22	8,490.39	-664.98	-299.08	-303.60	0.00	0.00	0.00	
<b>Start Drop -2.00</b>										
8,600.00	9.33	204.22	8,535.33	-672.05	-302.26	-306.83	2.00	-2.00	0.00	
8,700.00	7.33	204.22	8,634.27	-685.27	-308.20	-312.86	2.00	-2.00	0.00	
8,800.00	5.33	204.22	8,733.66	-695.33	-312.73	-317.46	2.00	-2.00	0.00	
8,900.00	3.33	204.22	8,833.36	-702.23	-315.83	-320.60	2.00	-2.00	0.00	

Planning Report

<b>Database:</b>	EDM_WA	<b>Local Co-ordinate Reference:</b>	Well Atlas 5 4 State Com 001H
<b>Company:</b>	SG Interests / Gordy Oil Co	<b>TVD Reference:</b>	GL:4270' KB:25' @ 4295.00usft
<b>Project:</b>	Lea Co. NM	<b>MD Reference:</b>	GL:4270' KB:25' @ 4295.00usft
<b>Site:</b>	Atlas 5 4 State Com 001H	<b>North Reference:</b>	Grid
<b>Well:</b>	Atlas 5 4 State Com 001H	<b>Survey Calculation Method:</b>	Minimum Curvature
<b>Wellbore:</b>	OH		
<b>Design:</b>	Plan 3		

Planned Survey									
Measured Depth (usft)	Inclination (°)	Azimuth (°)	Vertical Depth (usft)	+N/-S (usft)	+E/-W (usft)	Vertical Section (usft)	Dogleg Rate (°/100usft)	Build Rate (°/100usft)	Turn Rate (°/100usft)
9,000.00	1.33	204.22	8,933.28	-705.94	-317.50	-322.30	2.00	-2.00	0.00
9,066.73	0.00	0.00	9,000.00	-706.65	-317.82	-322.62	2.00	-2.00	0.00
<b>"VP" 0.00° @ 9066.73'MD - FTP/PP1(ATLAS)</b>									
9,100.00	0.00	0.00	9,033.27	-706.65	-317.82	-322.62	0.00	0.00	0.00
9,200.00	0.00	0.00	9,133.27	-706.65	-317.82	-322.62	0.00	0.00	0.00
9,300.00	0.00	0.00	9,233.27	-706.65	-317.82	-322.62	0.00	0.00	0.00
9,365.97	0.00	0.00	9,299.24	-706.65	-317.82	-322.62	0.00	0.00	0.00
<b>KOP @ 9365.97'MD Build 10.00°/100'</b>									
9,400.00	3.40	89.56	9,333.25	-706.64	-316.81	-321.61	10.00	10.00	0.00
9,450.00	8.40	89.56	9,382.97	-706.60	-311.67	-316.47	10.00	10.00	0.00
9,500.00	13.40	89.56	9,432.05	-706.53	-302.21	-307.02	10.00	10.00	0.00
9,550.00	18.40	89.56	9,480.12	-706.42	-288.52	-293.32	10.00	10.00	0.00
9,600.00	23.40	89.56	9,526.82	-706.29	-270.69	-275.49	10.00	10.00	0.00
9,650.00	28.40	89.56	9,571.78	-706.12	-248.85	-253.65	10.00	10.00	0.00
9,700.00	33.40	89.56	9,614.67	-705.92	-223.18	-227.98	10.00	10.00	0.00
9,750.00	38.40	89.56	9,655.15	-705.69	-193.87	-198.67	10.00	10.00	0.00
9,800.00	43.40	89.56	9,692.93	-705.44	-161.14	-165.94	10.00	10.00	0.00
9,850.00	48.40	89.56	9,727.72	-705.16	-125.25	-130.04	10.00	10.00	0.00
9,900.00	53.40	89.56	9,759.24	-704.86	-86.45	-91.25	10.00	10.00	0.00
9,950.00	58.40	89.56	9,787.26	-704.54	-45.06	-49.86	10.00	10.00	0.00
10,000.00	63.40	89.56	9,811.56	-704.20	-1.39	-6.18	10.00	10.00	0.00
10,050.00	68.40	89.56	9,831.97	-703.85	44.24	39.45	10.00	10.00	0.00
10,100.00	73.40	89.56	9,848.33	-703.49	91.47	86.68	10.00	10.00	0.00
10,150.00	78.40	89.56	9,860.50	-703.11	139.95	135.16	10.00	10.00	0.00
10,200.00	83.40	89.56	9,868.40	-702.73	189.30	184.51	10.00	10.00	0.00
10,250.00	88.40	89.56	9,871.97	-702.34	239.16	234.37	10.00	10.00	0.00
10,261.17	89.52	89.56	9,872.18	-702.26	250.32	245.54	10.00	10.00	0.00
<b>"LP" 89.52° @ 10261.17'MD</b>									
10,263.16	89.52	89.56	9,872.19	-702.24	252.32	247.53	0.00	0.00	0.00
<b>LP(ATLAS)</b>									
10,300.00	89.52	89.56	9,872.50	-701.96	289.15	284.37	0.00	0.00	0.00
10,400.00	89.52	89.56	9,873.34	-701.18	389.14	384.36	0.00	0.00	0.00
10,500.00	89.52	89.56	9,874.18	-700.41	489.14	484.36	0.00	0.00	0.00
10,600.00	89.52	89.56	9,875.01	-699.64	589.13	584.36	0.00	0.00	0.00
10,700.00	89.52	89.56	9,875.85	-698.86	689.12	684.35	0.00	0.00	0.00
10,800.00	89.52	89.56	9,876.69	-698.09	789.12	784.35	0.00	0.00	0.00
10,900.00	89.52	89.56	9,877.53	-697.32	889.11	884.34	0.00	0.00	0.00
11,000.00	89.52	89.56	9,878.36	-696.55	989.11	984.34	0.00	0.00	0.00
11,100.00	89.52	89.56	9,879.20	-695.77	1,089.10	1,084.34	0.00	0.00	0.00
11,200.00	89.52	89.56	9,880.04	-695.00	1,189.09	1,184.33	0.00	0.00	0.00
11,300.00	89.52	89.56	9,880.88	-694.23	1,289.09	1,284.33	0.00	0.00	0.00
11,400.00	89.52	89.56	9,881.72	-693.45	1,389.08	1,384.33	0.00	0.00	0.00
11,500.00	89.52	89.56	9,882.55	-692.68	1,489.07	1,484.32	0.00	0.00	0.00
11,600.00	89.52	89.56	9,883.39	-691.91	1,589.07	1,584.32	0.00	0.00	0.00
11,700.00	89.52	89.56	9,884.23	-691.13	1,689.06	1,684.32	0.00	0.00	0.00
11,800.00	89.52	89.56	9,885.07	-690.36	1,789.05	1,784.31	0.00	0.00	0.00
11,900.00	89.52	89.56	9,885.90	-689.59	1,889.05	1,884.31	0.00	0.00	0.00
12,000.00	89.52	89.56	9,886.74	-688.81	1,989.04	1,984.31	0.00	0.00	0.00
12,100.00	89.52	89.56	9,887.58	-688.04	2,089.03	2,084.30	0.00	0.00	0.00
12,200.00	89.52	89.56	9,888.42	-687.27	2,189.03	2,184.30	0.00	0.00	0.00
12,244.66	89.52	89.56	9,888.79	-686.92	2,233.68	2,228.96	0.00	0.00	0.00
<b>PP2(ATLAS)</b>									
12,300.00	89.52	89.56	9,889.26	-686.50	2,289.02	2,284.29	0.00	0.00	0.00

Planning Report

<b>Database:</b>	EDM_WA	<b>Local Co-ordinate Reference:</b>	Well Atlas 5 4 State Com 001H
<b>Company:</b>	SG Interests / Gordy Oil Co	<b>TVD Reference:</b>	GL:4270' KB:25' @ 4295.00usft
<b>Project:</b>	Lea Co. NM	<b>MD Reference:</b>	GL:4270' KB:25' @ 4295.00usft
<b>Site:</b>	Atlas 5 4 State Com 001H	<b>North Reference:</b>	Grid
<b>Well:</b>	Atlas 5 4 State Com 001H	<b>Survey Calculation Method:</b>	Minimum Curvature
<b>Wellbore:</b>	OH		
<b>Design:</b>	Plan 3		

Planned Survey										
Measured Depth (usft)	Inclination (°)	Azimuth (°)	Vertical Depth (usft)	+N/-S (usft)	+E/-W (usft)	Vertical Section (usft)	Dogleg Rate (°/100usft)	Build Rate (°/100usft)	Turn Rate (°/100usft)	
12,400.00	89.52	89.56	9,890.09	-685.72	2,389.01	2,384.29	0.00	0.00	0.00	
12,500.00	89.52	89.56	9,890.93	-684.95	2,489.01	2,484.29	0.00	0.00	0.00	
12,600.00	89.52	89.56	9,891.77	-684.18	2,589.00	2,584.28	0.00	0.00	0.00	
12,700.00	89.52	89.56	9,892.61	-683.40	2,688.99	2,684.28	0.00	0.00	0.00	
12,800.00	89.52	89.56	9,893.44	-682.63	2,788.99	2,784.28	0.00	0.00	0.00	
12,900.00	89.52	89.56	9,894.28	-681.86	2,888.98	2,884.27	0.00	0.00	0.00	
12,985.72	89.52	89.56	9,895.00	-681.19	2,974.70	2,969.99	0.00	0.00	0.00	
<b>"Turn PT" 89.52° @ 12985.72'MD DLS 2.00° TFO 4.53 - Turn PT(ATLAS)</b>										
13,000.00	89.80	89.58	9,895.08	-681.09	2,988.98	2,984.27	2.00	1.99	0.16	
13,019.22	90.19	89.61	9,895.09	-680.95	3,008.20	3,003.50	2.00	1.99	0.16	
<b>Start 7035.67 hold at 13019.22 MD</b>										
13,100.00	90.19	89.61	9,894.82	-680.40	3,088.97	3,084.27	0.00	0.00	0.00	
13,200.00	90.19	89.61	9,894.49	-679.72	3,188.97	3,184.27	0.00	0.00	0.00	
13,300.00	90.19	89.61	9,894.16	-679.04	3,288.97	3,284.27	0.00	0.00	0.00	
13,400.00	90.19	89.61	9,893.84	-678.36	3,388.96	3,384.27	0.00	0.00	0.00	
13,500.00	90.19	89.61	9,893.51	-677.68	3,488.96	3,484.27	0.00	0.00	0.00	
13,600.00	90.19	89.61	9,893.18	-677.00	3,588.96	3,584.27	0.00	0.00	0.00	
13,700.00	90.19	89.61	9,892.85	-676.32	3,688.96	3,684.27	0.00	0.00	0.00	
13,800.00	90.19	89.61	9,892.52	-675.64	3,788.95	3,784.27	0.00	0.00	0.00	
13,900.00	90.19	89.61	9,892.20	-674.96	3,888.95	3,884.27	0.00	0.00	0.00	
14,000.00	90.19	89.61	9,891.87	-674.27	3,988.95	3,984.27	0.00	0.00	0.00	
14,100.00	90.19	89.61	9,891.54	-673.59	4,088.94	4,084.26	0.00	0.00	0.00	
14,200.00	90.19	89.61	9,891.21	-672.91	4,188.94	4,184.26	0.00	0.00	0.00	
14,300.00	90.19	89.61	9,890.88	-672.23	4,288.94	4,284.26	0.00	0.00	0.00	
14,400.00	90.19	89.61	9,890.56	-671.55	4,388.94	4,384.26	0.00	0.00	0.00	
14,500.00	90.19	89.61	9,890.23	-670.87	4,488.93	4,484.26	0.00	0.00	0.00	
14,600.00	90.19	89.61	9,889.90	-670.19	4,588.93	4,584.26	0.00	0.00	0.00	
14,700.00	90.19	89.61	9,889.57	-669.51	4,688.93	4,684.26	0.00	0.00	0.00	
14,800.00	90.19	89.61	9,889.24	-668.83	4,788.92	4,784.26	0.00	0.00	0.00	
14,879.18	90.19	89.61	9,888.98	-668.29	4,868.11	4,863.44	0.00	0.00	0.00	
<b>PP3(ATLAS)</b>										
14,900.00	90.19	89.61	9,888.91	-668.15	4,888.92	4,884.26	0.00	0.00	0.00	
15,000.00	90.19	89.61	9,888.59	-667.47	4,988.92	4,984.26	0.00	0.00	0.00	
15,100.00	90.19	89.61	9,888.26	-666.79	5,088.92	5,084.26	0.00	0.00	0.00	
15,200.00	90.19	89.61	9,887.93	-666.11	5,188.91	5,184.26	0.00	0.00	0.00	
15,300.00	90.19	89.61	9,887.60	-665.43	5,288.91	5,284.26	0.00	0.00	0.00	
15,400.00	90.19	89.61	9,887.27	-664.75	5,388.91	5,384.26	0.00	0.00	0.00	
15,500.00	90.19	89.61	9,886.95	-664.06	5,488.90	5,484.26	0.00	0.00	0.00	
15,600.00	90.19	89.61	9,886.62	-663.38	5,588.90	5,584.26	0.00	0.00	0.00	
15,700.00	90.19	89.61	9,886.29	-662.70	5,688.90	5,684.26	0.00	0.00	0.00	
15,800.00	90.19	89.61	9,885.96	-662.02	5,788.90	5,784.26	0.00	0.00	0.00	
15,900.00	90.19	89.61	9,885.63	-661.34	5,888.89	5,884.25	0.00	0.00	0.00	
16,000.00	90.19	89.61	9,885.31	-660.66	5,988.89	5,984.25	0.00	0.00	0.00	
16,100.00	90.19	89.61	9,884.98	-659.98	6,088.89	6,084.25	0.00	0.00	0.00	
16,200.00	90.19	89.61	9,884.65	-659.30	6,188.88	6,184.25	0.00	0.00	0.00	
16,300.00	90.19	89.61	9,884.32	-658.62	6,288.88	6,284.25	0.00	0.00	0.00	
16,400.00	90.19	89.61	9,883.99	-657.94	6,388.88	6,384.25	0.00	0.00	0.00	
16,500.00	90.19	89.61	9,883.66	-657.26	6,488.88	6,484.25	0.00	0.00	0.00	
16,600.00	90.19	89.61	9,883.34	-656.58	6,588.87	6,584.25	0.00	0.00	0.00	
16,700.00	90.19	89.61	9,883.01	-655.90	6,688.87	6,684.25	0.00	0.00	0.00	
16,800.00	90.19	89.61	9,882.68	-655.22	6,788.87	6,784.25	0.00	0.00	0.00	
16,900.00	90.19	89.61	9,882.35	-654.53	6,888.86	6,884.25	0.00	0.00	0.00	
17,000.00	90.19	89.61	9,882.02	-653.85	6,988.86	6,984.25	0.00	0.00	0.00	

Planning Report

<b>Database:</b>	EDM_WA	<b>Local Co-ordinate Reference:</b>	Well Atlas 5 4 State Com 001H
<b>Company:</b>	SG Interests / Gordy Oil Co	<b>TVD Reference:</b>	GL:4270' KB:25' @ 4295.00usft
<b>Project:</b>	Lea Co. NM	<b>MD Reference:</b>	GL:4270' KB:25' @ 4295.00usft
<b>Site:</b>	Atlas 5 4 State Com 001H	<b>North Reference:</b>	Grid
<b>Well:</b>	Atlas 5 4 State Com 001H	<b>Survey Calculation Method:</b>	Minimum Curvature
<b>Wellbore:</b>	OH		
<b>Design:</b>	Plan 3		

Planned Survey										
Measured Depth (usft)	Inclination (°)	Azimuth (°)	Vertical Depth (usft)	+N/-S (usft)	+E/-W (usft)	Vertical Section (usft)	Dogleg Rate (°/100usft)	Build Rate (°/100usft)	Turn Rate (°/100usft)	
17,100.00	90.19	89.61	9,881.70	-653.17	7,088.86	7,084.25	0.00	0.00	0.00	
17,200.00	90.19	89.61	9,881.37	-652.49	7,188.86	7,184.25	0.00	0.00	0.00	
17,300.00	90.19	89.61	9,881.04	-651.81	7,288.85	7,284.25	0.00	0.00	0.00	
17,400.00	90.19	89.61	9,880.71	-651.13	7,388.85	7,384.25	0.00	0.00	0.00	
17,500.00	90.19	89.61	9,880.38	-650.45	7,488.85	7,484.25	0.00	0.00	0.00	
17,514.86	90.19	89.61	9,880.33	-650.35	7,503.70	7,499.10	0.00	0.00	0.00	
<b>PP4(ATLAS)</b>										
17,600.00	90.19	89.61	9,880.06	-649.77	7,588.84	7,584.25	0.00	0.00	0.00	
17,700.00	90.19	89.61	9,879.73	-649.09	7,688.84	7,684.25	0.00	0.00	0.00	
17,800.00	90.19	89.61	9,879.40	-648.41	7,788.84	7,784.24	0.00	0.00	0.00	
17,900.00	90.19	89.61	9,879.07	-647.73	7,888.84	7,884.24	0.00	0.00	0.00	
18,000.00	90.19	89.61	9,878.74	-647.05	7,988.83	7,984.24	0.00	0.00	0.00	
18,100.00	90.19	89.61	9,878.41	-646.37	8,088.83	8,084.24	0.00	0.00	0.00	
18,200.00	90.19	89.61	9,878.09	-645.69	8,188.83	8,184.24	0.00	0.00	0.00	
18,300.00	90.19	89.61	9,877.76	-645.01	8,288.82	8,284.24	0.00	0.00	0.00	
18,400.00	90.19	89.61	9,877.43	-644.32	8,388.82	8,384.24	0.00	0.00	0.00	
18,500.00	90.19	89.61	9,877.10	-643.64	8,488.82	8,484.24	0.00	0.00	0.00	
18,600.00	90.19	89.61	9,876.77	-642.96	8,588.82	8,584.24	0.00	0.00	0.00	
18,700.00	90.19	89.61	9,876.45	-642.28	8,688.81	8,684.24	0.00	0.00	0.00	
18,800.00	90.19	89.61	9,876.12	-641.60	8,788.81	8,784.24	0.00	0.00	0.00	
18,900.00	90.19	89.61	9,875.79	-640.92	8,888.81	8,884.24	0.00	0.00	0.00	
19,000.00	90.19	89.61	9,875.46	-640.24	8,988.80	8,984.24	0.00	0.00	0.00	
19,100.00	90.19	89.61	9,875.13	-639.56	9,088.80	9,084.24	0.00	0.00	0.00	
19,200.00	90.19	89.61	9,874.81	-638.88	9,188.80	9,184.24	0.00	0.00	0.00	
19,300.00	90.19	89.61	9,874.48	-638.20	9,288.80	9,284.24	0.00	0.00	0.00	
19,400.00	90.19	89.61	9,874.15	-637.52	9,388.79	9,384.24	0.00	0.00	0.00	
19,500.00	90.19	89.61	9,873.82	-636.84	9,488.79	9,484.24	0.00	0.00	0.00	
19,600.00	90.19	89.61	9,873.49	-636.16	9,588.79	9,584.24	0.00	0.00	0.00	
19,700.00	90.19	89.61	9,873.16	-635.48	9,688.78	9,684.23	0.00	0.00	0.00	
19,800.00	90.19	89.61	9,872.84	-634.80	9,788.78	9,784.23	0.00	0.00	0.00	
19,900.00	90.19	89.61	9,872.51	-634.11	9,888.78	9,884.23	0.00	0.00	0.00	
20,000.00	90.19	89.61	9,872.18	-633.43	9,988.78	9,984.23	0.00	0.00	0.00	
20,054.90	90.19	89.61	9,872.00	-633.06	10,043.67	10,039.13	0.00	0.00	0.00	
<b>"TD" 90.19° @ 20054.90'MD - LTP/BHL(ATLAS)</b>										

Planning Report

<b>Database:</b>	EDM_WA	<b>Local Co-ordinate Reference:</b>	Well Atlas 5 4 State Com 001H
<b>Company:</b>	SG Interests / Gordy Oil Co	<b>TVD Reference:</b>	GL:4270' KB:25' @ 4295.00usft
<b>Project:</b>	Lea Co. NM	<b>MD Reference:</b>	GL:4270' KB:25' @ 4295.00usft
<b>Site:</b>	Atlas 5 4 State Com 001H	<b>North Reference:</b>	Grid
<b>Well:</b>	Atlas 5 4 State Com 001H	<b>Survey Calculation Method:</b>	Minimum Curvature
<b>Wellbore:</b>	OH		
<b>Design:</b>	Plan 3		

Design Targets									
Target Name	Dip Angle	Dip Dir.	TVD	+N/-S	+E/-W	Northing	Easting	Latitude	Longitude
- hit/miss target	(°)	(°)	(usft)	(usft)	(usft)	(usft)	(usft)		
- Shape									
FTP/PP1(ATLAS) - plan hits target center - Point	0.00	0.00	9,000.00	-706.65	-317.82	774,540.98	710,843.51	33.127359	-103.644629
LP(ATLAS) - plan misses target center by 2.68usft at 10263.16usft MD (9872.19 TVD, -702.24 N, 252.32 E) - Point	0.00	0.00	9,872.00	-704.92	252.34	774,542.71	711,413.67	33.127354	-103.642767
LTP/BHL(ATLAS) - plan hits target center - Point	0.00	0.00	9,872.00	-633.06	10,043.67	774,614.57	721,205.00	33.127370	-103.610785
PP4(ATLAS) - plan misses target center by 1.20usft at 17514.86usft MD (9880.33 TVD, -650.35 N, 7503.70 E) - Point	0.00	0.00	9,880.33	-651.55	7,503.71	774,596.08	718,665.04	33.127367	-103.619081
PP2(ATLAS) - plan misses target center by 9.75usft at 12244.66usft MD (9888.79 TVD, -686.92 N, 2233.68 E) - Point	0.00	0.00	9,888.79	-696.67	2,233.76	774,550.96	713,395.09	33.127340	-103.636295
PP3(ATLAS) - plan misses target center by 22.63usft at 14879.18usft MD (9888.98 TVD, -668.29 N, 4868.11 E) - Point	0.00	0.00	9,888.98	-690.92	4,868.26	774,556.71	716,029.59	33.127308	-103.627690
Turn PT(ATLAS) - plan hits target center - Point	0.00	0.00	9,895.00	-681.19	2,974.70	774,566.43	714,136.02	33.127369	-103.633874

Casing Points					
Measured Depth	Vertical Depth	Name		Casing Diameter	Hole Diameter
(usft)	(usft)			(")	(")
365.00	365.00	13-3/8" Conductor Casing		13-3/8	13-3/8
4,104.00	4,104.00	9-5/8" Surface Casing		9-5/8	9-5/8

Plan Annotations					
Measured Depth	Vertical Depth	Local Coordinates		Comment	
(usft)	(usft)	+N/-S (usft)	+E/-W (usft)		
4,200.00	4,200.00	0.00	0.00	Start Build 2.00	
4,712.33	4,709.61	-41.67	-18.74	"EOB" 10.25° @ 4712'MD	
8,554.40	8,490.39	-664.98	-299.08	Start Drop -2.00	
9,066.73	9,000.00	-706.65	-317.82	"VP" 0.00° @ 9066.73'MD	
9,365.97	9,299.24	-706.65	-317.82	KOP @ 9365.97'MD Build 10.00°/100'	
10,261.17	9,872.18	-702.26	250.32	"LP" 89.52° @ 10261.17'MD	
12,985.72	9,895.00	-681.19	2,974.70	"Turn PT" 89.52° @ 12985.72'MD DLS 2.00° TFO 4.53	
13,019.22	9,895.09	-680.95	3,008.20	Start 7035.67 hold at 13019.22 MD	
20,054.90	9,872.00	-633.06	10,043.67	"TD" 90.19° @ 20054.90'MD	