

District I  
1625 N. French Dr., Hobbs, NM 88240  
District II  
811 S. First St., Artesia, NM 88210  
District III  
1000 Rio Brazos Rd., Aztec, NM 87410  
District IV  
1220 S. St. Francis Dr., Santa Fe, NM 87505

State of New Mexico  
Energy, Minerals & Natural  
Resources

Form C-104  
Revised August 1, 2011

Submit one copy to appropriate District Office

Oil Conservation Division  
1220 South St. Francis Dr.

AMENDED REPORT

**I. REQUEST FOR ALLOWABLE MINDS AUTHORIZATION TO TRANSPORT**

<sup>1</sup> Operator name and Address EOG RESOURCES INC PO BOX 2267 MIDLAND, TEXAS 79702		<sup>2</sup> OGRID Number 7377
		<sup>3</sup> Reason for Filing Code/ Effective Date NW 11/3/2022
<sup>4</sup> API Number 30 - 025-49846	<sup>5</sup> Pool Name Bobcat Draw; Upper Wolfcamp	<sup>6</sup> Pool Code 98094
<sup>7</sup> Property Code 331512	<sup>8</sup> Property Name APPALOOSA 18 FED COM	<sup>9</sup> Well Number 726H

**II. <sup>10</sup> Surface Location**

Ul or lot no.	Section	Township	Range	Lot Idn	Feet from the	North/South Line	Feet from the	East/West line	County
P	18	25S	34E		235'	SOUTH	1125'	EAST	LEA

**<sup>11</sup> Bottom Hole Location**

UL or lot no.	Section	Township	Range	Lot Idn	Feet from the	North/South line	Feet from the	East/West line	County
J	7	25S	34E		2527'	SOUTH	1310'	EAST	LEA

<sup>12</sup> Lse Code	<sup>13</sup> Producing Method Code FLOWING	<sup>14</sup> Gas Connection Date	<sup>15</sup> C-129 Permit Number	<sup>16</sup> C-129 Effective Date	<sup>17</sup> C-129 Expiration Date
------------------------	--	-----------------------------------	-----------------------------------	------------------------------------	-------------------------------------

**III. Oil and Gas Transporters**

<sup>18</sup> Transporter OGRID	<sup>19</sup> Transporter Name and Address	<sup>20</sup> O/G/W
372812	EOGRM	OIL
151618	ENTERPRISE FIELD SERVICES	GAS
298751	REGENCY FIELD SERVICES	GAS
36785	DCP MIDSTREAM	GAS

**IV. Well Completion Data**

<sup>21</sup> Spud Date 6/23/2022	<sup>22</sup> Ready Date 11/3/2022	<sup>23</sup> TD 20,320'	<sup>24</sup> PBDT 20,294'	<sup>25</sup> Perforations 12,875'-20,294'	<sup>26</sup> DHC, MC
<sup>27</sup> Hole Size		<sup>28</sup> Casing & Tubing Size		<sup>29</sup> Depth Set	<sup>30</sup> Sacks Cement
12 1/4"		9 5/8"		1,150'	470 SXS CL C/CIRC
8 3/4"		7 5/8"		11,869'	440 SXS CL H/CIRC 1290 SXS CL C/CIRC
6 3/4"		5 1/2"		20,303'	750 SXS CL H/CIRC

**V. Well Test Data**

<sup>31</sup> Date New Oil 11/3/2022	<sup>32</sup> Gas Delivery Date 11/3/2022	<sup>33</sup> Test Date 11/5/2022	<sup>34</sup> Test Length 24 HRS	<sup>35</sup> Tbg. Pressure	<sup>36</sup> Csg. Pressure 1830
<sup>37</sup> Choke Size 52	<sup>38</sup> Oil 2745	<sup>39</sup> Water 7076	<sup>40</sup> Gas 4809		<sup>41</sup> Test Method

<sup>42</sup> I hereby certify that the rules of the Oil Conservation Division have been complied with and that the information given above is true and complete to the best of my knowledge and belief.

Signature: *Kristina Agee*

Printed name: Kristina Agee

Title: REGULATORY SPECIALIST

E-mail Address: kristina\_agee@eogresources.com

Date: 1/5/2023 Phone: 432-686-6996

OIL CONSERVATION DIVISION	
Approved by:	
Title:	
Approval Date:	

District I  
1625 N. French Dr., Hobbs, NM 88240  
Phone: (575) 393-6161 Fax: (575) 393-0720  
District II  
811 S. First St., Artesia, NM 88210  
Phone: (575) 748-1283 Fax: (575) 748-9720  
District III  
1000 Rio Brazos Road, Aztec, NM 87410  
Phone: (505) 334-6178 Fax: (505) 334-6170  
District IV  
1220 S. St. Francis Dr., Santa Fe, NM 87505  
Phone: (505) 476-3460 Fax: (505) 476-3462

State of New Mexico  
Energy, Minerals & Natural Resources  
Department  
OIL CONSERVATION DIVISION  
1220 South St. Francis Dr.  
Santa Fe, NM 87505

FORM C-102

Revised August 1, 2011

Submit one copy to appropriate  
District Office

AMENDED REPORT

AS-DRILLED PLAT

<sup>1</sup> API Number <b>30-025-49846</b>		<sup>2</sup> Pool Code <b>98094</b>	<sup>3</sup> Pool Name <b>Bobcat Draw; Upper Wolfcamp</b>
<sup>4</sup> Property Code <b>331512</b>	<sup>5</sup> Property Name <b>APPALOOSA 18 FED COM</b>		<sup>6</sup> Well Number <b>726H</b>
<sup>7</sup> OGRID No. <b>7377</b>	<sup>8</sup> Operator Name <b>EOG RESOURCES, INC.</b>		<sup>9</sup> Elevation <b>3340'</b>

<sup>10</sup>Surface Location

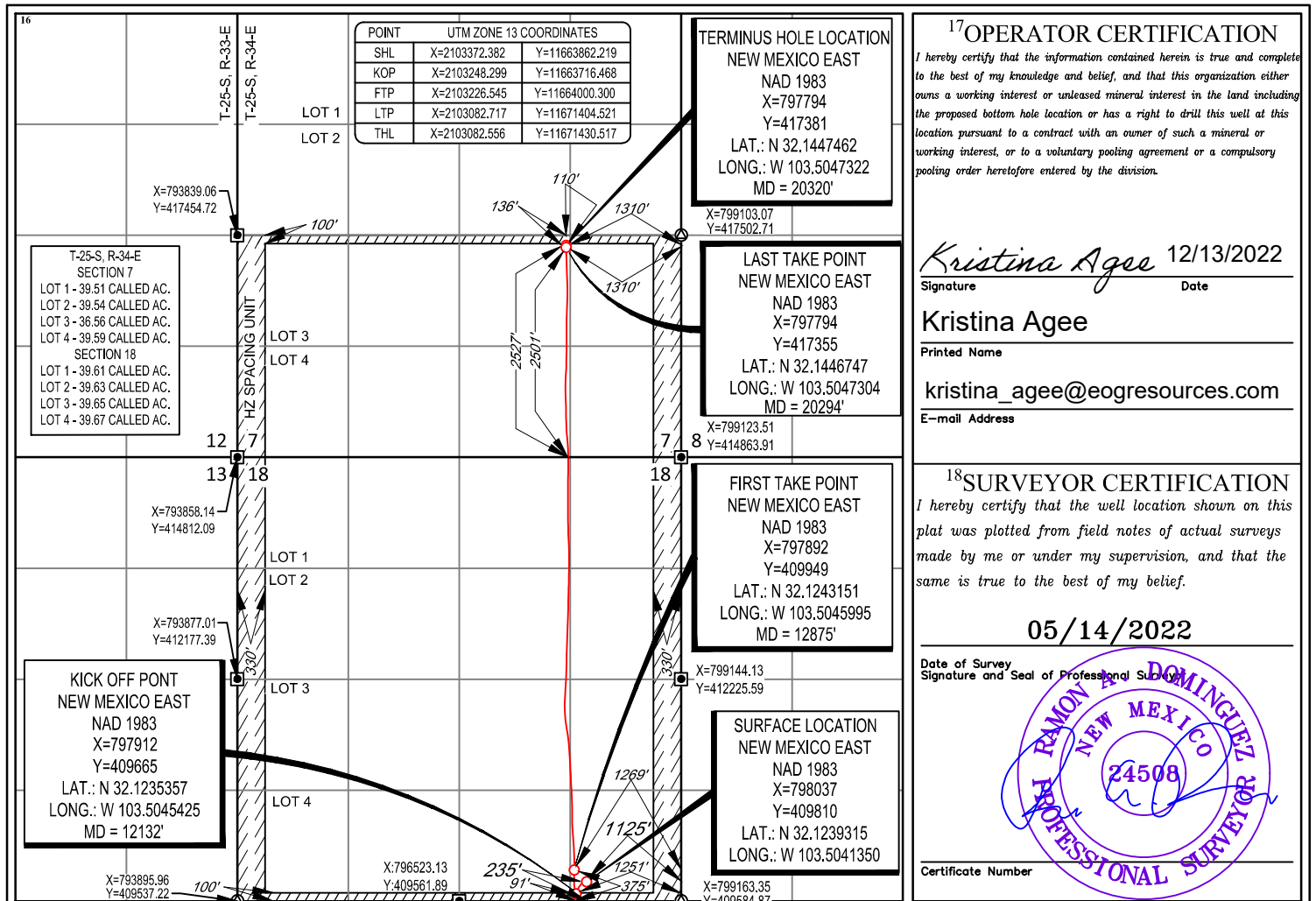
UL or lot no.	Section	Township	Range	Lot Idn	Feet from the	North/South line	Feet from the	East/West line	County
<b>P</b>	<b>18</b>	<b>25-S</b>	<b>34-E</b>	<b>-</b>	<b>235'</b>	<b>SOUTH</b>	<b>1125'</b>	<b>EAST</b>	<b>LEA</b>

<sup>11</sup>Bottom Hole Location If Different From Surface

UL or lot no.	Section	Township	Range	Lot Idn	Feet from the	North/South line	Feet from the	East/West line	County
<b>J</b>	<b>7</b>	<b>25-S</b>	<b>34-E</b>	<b>-</b>	<b>2527'</b>	<b>SOUTH</b>	<b>1310'</b>	<b>EAST</b>	<b>LEA</b>

<sup>12</sup> Dedicated Acres <b>480.00</b> <b>957.71</b>	<sup>13</sup> Joint or Infill	<sup>14</sup> Consolidation Code	<sup>15</sup> Order No. <b>NSP-2135</b>
---	-------------------------------	----------------------------------	--

No allowable will be assigned to this completion until all interests have been consolidated or a non-standard unit has been approved by the division.



SECTION 18, TOWNSHIP 25-S, RANGE 34-E, N.M.P.M.  
LEA COUNTY, NEW MEXICO

SCALE: 1" = 2000'  
0' 1000' 2000'



T-25-S, R-34-E  
SECTION 7  
LOT 1 - 39.51 CALLED AC.  
LOT 2 - 39.54 CALLED AC.  
LOT 3 - 36.56 CALLED AC.  
LOT 4 - 39.59 CALLED AC.  
SECTION 18  
LOT 1 - 39.61 CALLED AC.  
LOT 2 - 39.63 CALLED AC.  
LOT 3 - 39.65 CALLED AC.  
LOT 4 - 39.67 CALLED AC.

POINT	UTM ZONE 13 COORDINATES	
SHL	X=2103372.382	Y=11663862.219
KOP	X=2103248.299	Y=11663716.468
FTP	X=2103226.545	Y=11664000.300
LTP	X=2103082.717	Y=11671404.521
THL	X=2103082.556	Y=11671430.517

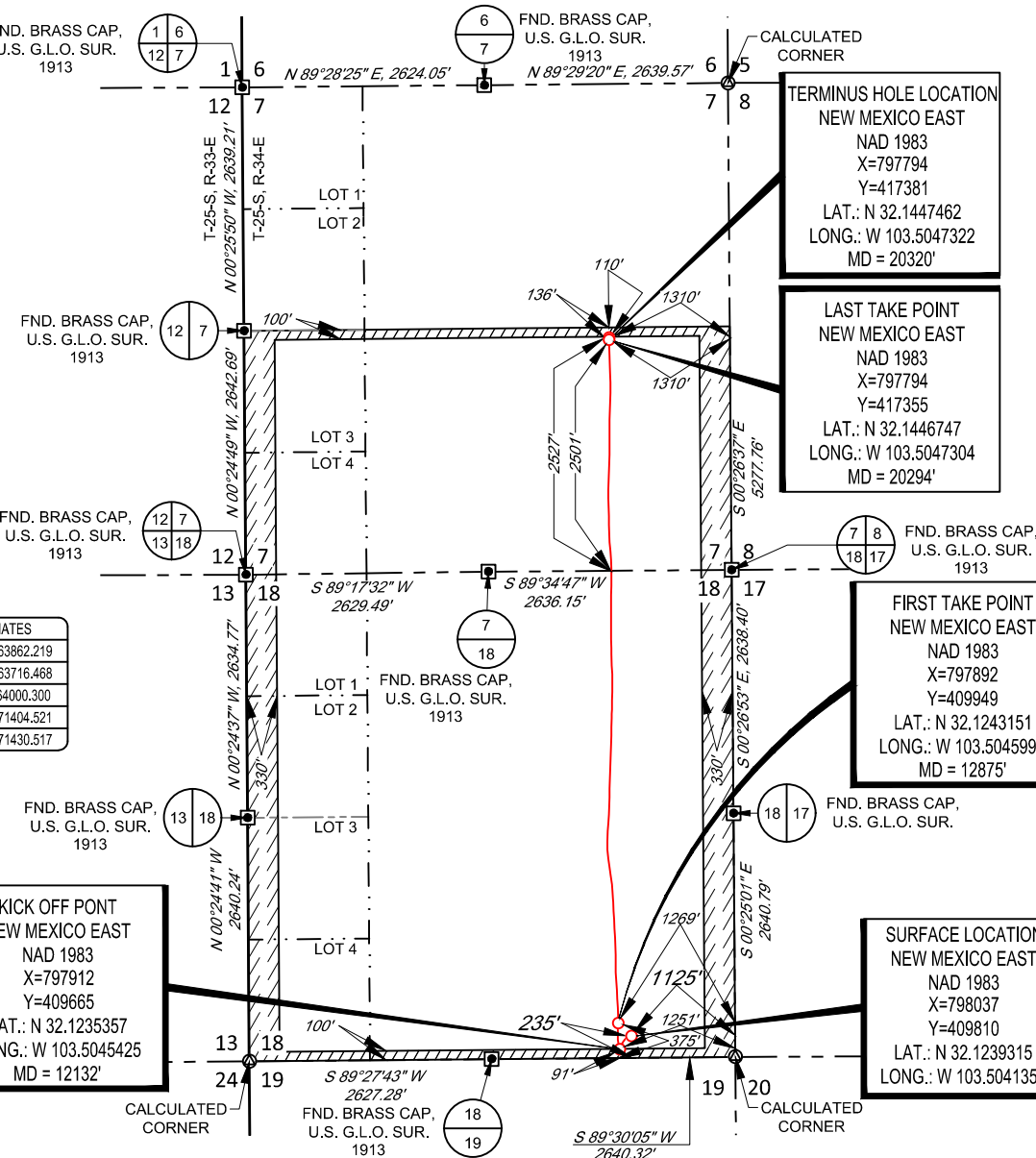
KICK OFF PONT  
NEW MEXICO EAST  
NAD 1983  
X=797912  
Y=409665  
LAT.: N 32.1235357  
LONG.: W 103.5045425  
MD = 12132'

TERMINUS HOLE LOCATION  
NEW MEXICO EAST  
NAD 1983  
X=797794  
Y=417381  
LAT.: N 32.1447462  
LONG.: W 103.5047322  
MD = 20320'

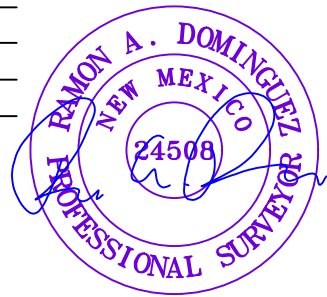
LAST TAKE POINT  
NEW MEXICO EAST  
NAD 1983  
X=797794  
Y=417355  
LAT.: N 32.1446747  
LONG.: W 103.5047304  
MD = 20294'

FIRST TAKE POINT  
NEW MEXICO EAST  
NAD 1983  
X=797892  
Y=409949  
LAT.: N 32.1243151  
LONG.: W 103.5045995  
MD = 12875'

SURFACE LOCATION  
NEW MEXICO EAST  
NAD 1983  
X=798037  
Y=409810  
LAT.: N 32.1239315  
LONG.: W 103.5041350



LEASE NAME & WELL NO.: APPALOOSA 18 FED COM 726H  
SECTION 18 TWP 25-S RGE 34-E SURVEY N.M.P.M.  
COUNTY LEA STATE NM ELEVATION 3340'  
DESCRIPTION 235' FSL & 1125' FEL



1400 EVERMAN PARKWAY, Ste. 146 • FT. WORTH, TEXAS 76140  
TELEPHONE: (817) 744-7512 • FAX (817) 744-7554  
2903 NORTH BIG SPRING • MIDLAND, TEXAS 79705  
TELEPHONE: (432) 682-1653 OR (800) 767-1653 • FAX (432) 682-1743  
WWW.TOPOGRAPHIC.COM

Ramon A. Dominguez, P.S. No. 24508  
OCTOBER 11, 2022



APPALOOSA 18 FED COM 726H AS-DRILLED	REVISION:	NOTES: 1. ORIGINAL DOCUMENT SIZE: 8.5" X 11" 2. ALL BEARINGS, DISTANCES, AND COORDINATE VALUES CONTAINED HEREIN ARE GRID BASED UPON THE NEW MEXICO COORDINATE SYSTEM OF 1983, EAST ZONE, U.S. SURVEY FEET. 3. THIS WELL LOCATION SHOWN HEREON HAS BEEN SURVEYED ON THE GROUND UNDER MY SUPERVISION AND PREPARED ACCORDING TO THE EVIDENCE FOUND AT THE TIME OF SURVEY, AND DATA PROVIDED BY EOG RESOURCES, INC. THIS CERTIFICATION IS MADE AND LIMITED TO THOSE PERSONS OR ENTITIES SHOWN ON THE FACE OF THIS PLAT AND IS NON-TRANSFERABLE. THIS SURVEY IS CERTIFIED FOR THIS TRANSACTION ONLY.
DATE: 10/07/2022		
FILE: AD_APPALOOSA_18_FED_COM_726H		
DRAWN BY: A.V.F.		
SHEET: 2 OF 2		



## **Midland**

**Lea County, NM (NAD 83 NME)**

**Appaloosa 18 Fed Com**

**#726H**

**OH**

**Design: OH**

## **Final PVA**

**25 August, 2022**



EOG Resources

Final PVA

<b>Company:</b>	Midland	<b>Local Co-ordinate Reference:</b>	Well #726H
<b>Project:</b>	Lea County, NM (NAD 83 NME)	<b>TVD Reference:</b>	KB = 26' @ 3366.0usft
<b>Site:</b>	Appaloosa 18 Fed Com	<b>MD Reference:</b>	KB = 26' @ 3366.0usft
<b>Well:</b>	#726H	<b>North Reference:</b>	Grid
<b>Wellbore:</b>	OH	<b>Survey Calculation Method:</b>	Minimum Curvature
<b>Design:</b>	OH	<b>Database:</b>	PEDM

<b>Project</b>	Lea County, NM (NAD 83 NME)		
<b>Map System:</b>	US State Plane 1983	<b>System Datum:</b>	Mean Sea Level
<b>Geo Datum:</b>	North American Datum 1983		
<b>Map Zone:</b>	New Mexico Eastern Zone		

<b>Site</b>	Appaloosa 18 Fed Com		
<b>Site Position:</b>		<b>Northing:</b>	409,826.00 usft
<b>From:</b>	Map	<b>Easting:</b>	795,034.00 usft
<b>Position Uncertainty:</b>	0.0 usft	<b>Slot Radius:</b>	13-3/16 "
		<b>Latitude:</b>	32° 7' 26.538 N
		<b>Longitude:</b>	103° 30' 49.799 W
		<b>Grid Convergence:</b>	0.44 °

<b>Well</b>	#726H					
<b>Well Position</b>	<b>+N/-S</b>	0.0 usft	<b>Northing:</b>	409,810.00 usft	<b>Latitude:</b>	32° 7' 26.153 N
	<b>+E/-W</b>	0.0 usft	<b>Easting:</b>	798,037.00 usft	<b>Longitude:</b>	103° 30' 14.882 W
<b>Position Uncertainty</b>		0.0 usft	<b>Wellhead Elevation:</b>	usft	<b>Ground Level:</b>	3,340.0 usft

<b>Wellbore</b>	OH					
<b>Magnetics</b>	<b>Model Name</b>	<b>Sample Date</b>	<b>Declination (°)</b>	<b>Dip Angle (°)</b>	<b>Field Strength (nT)</b>	
	IGRF2020	7/6/2022	6.38	59.78	47,356.22716520	

<b>Design</b>	OH					
<b>Audit Notes:</b>						
<b>Version:</b>	1.0	<b>Phase:</b>	ACTUAL	<b>Tie On Depth:</b>	0.0	
<b>Vertical Section:</b>	<b>Depth From (TVD) (usft)</b>	<b>+N/-S (usft)</b>	<b>+E/-W (usft)</b>	<b>Direction (°)</b>		
	0.0	0.0	0.0	358.19		

<b>Survey Program</b>	Date 8/25/2022					
<b>From (usft)</b>	<b>To (usft)</b>	<b>Survey (Wellbore)</b>	<b>Tool Name</b>	<b>Description</b>		
198.0	20,320.0	Gordon MWD (OH)	EOG MWD+IFR1	MWD + IFR1		



EOG Resources

Final PVA

<b>Company:</b>	Midland	<b>Local Co-ordinate Reference:</b>	Well #726H
<b>Project:</b>	Lea County, NM (NAD 83 NME)	<b>TVD Reference:</b>	KB = 26' @ 3366.0usft
<b>Site:</b>	Appaloosa 18 Fed Com	<b>MD Reference:</b>	KB = 26' @ 3366.0usft
<b>Well:</b>	#726H	<b>North Reference:</b>	Grid
<b>Wellbore:</b>	OH	<b>Survey Calculation Method:</b>	Minimum Curvature
<b>Design:</b>	OH	<b>Database:</b>	PEDM

Survey												
MD (usft)	Inc (°)	Azi (azimuth) (°)	TVD (usft)	N/S (usft)	E/W (usft)	DLeg (°/100usft)	Build (°/100usft)	Turn (°/100usft)	High to Plan (usft)	Right to Plan (usft)		
0.0	0.00	0.00	0.0	0.0	0.0	0.00	0.00	0.00	0.0	0.0	0.0	0.0
198.0	0.91	342.14	198.0	1.5	-0.5	0.46	0.46	0.00	-1.6	0.0		
291.0	1.02	349.59	291.0	3.0	-0.9	0.18	0.12	8.01	-3.1	0.3		
376.0	0.86	354.87	376.0	4.4	-1.1	0.21	-0.19	6.21	-4.5	0.7		
463.0	0.62	4.91	463.0	5.5	-1.1	0.31	-0.28	11.54	-5.4	1.5		
549.0	0.51	4.44	549.0	6.4	-1.0	0.13	-0.13	-0.55	-6.3	1.5		
648.0	0.55	7.74	648.0	7.3	-0.9	0.05	0.04	3.33	-7.1	1.9		
744.0	0.42	29.22	743.9	8.0	-0.7	0.23	-0.14	22.37	-6.7	4.5		
840.0	0.90	286.37	839.9	8.6	-1.2	1.12	0.50	-107.14	-3.6	-7.9		
935.0	1.07	287.41	934.9	9.0	-2.8	0.18	0.18	1.09	-5.4	-7.8		
1,030.0	0.60	292.97	1,029.9	9.5	-4.1	0.50	-0.49	5.85	-7.5	-7.1		
1,102.0	0.49	282.53	1,101.9	9.7	-4.7	0.21	-0.15	-14.50	-6.7	-8.4		
1,233.0	0.69	249.48	1,232.9	9.5	-6.0	0.30	0.15	-25.23	-2.3	-11.0		
1,328.0	1.78	237.68	1,327.9	8.6	-7.8	1.17	1.15	-12.42	-2.0	-11.4		
1,423.0	3.35	235.19	1,422.8	6.2	-11.3	1.66	1.65	-2.62	-4.9	-11.7		
1,519.0	4.58	234.88	1,518.6	2.4	-16.8	1.28	1.28	-0.32	-7.4	-12.5		
1,614.0	4.72	236.86	1,613.2	-1.9	-23.1	0.22	0.15	2.08	-9.3	-13.5		
1,709.0	4.70	237.50	1,707.9	-6.2	-29.7	0.06	-0.02	0.67	-10.8	-14.8		
1,804.0	4.81	239.49	1,802.6	-10.3	-36.4	0.21	0.12	2.09	-12.7	-16.0		
1,995.0	4.99	239.23	1,992.9	-18.6	-50.4	0.09	0.09	-0.14	-16.1	-19.5		
2,090.0	4.62	238.17	2,087.6	-22.7	-57.2	0.40	-0.39	-1.12	-17.2	-21.4		
2,186.0	5.51	220.96	2,183.2	-28.3	-63.6	1.82	0.93	-17.93	-11.8	-26.3		
2,281.0	5.47	221.39	2,277.8	-35.1	-69.5	0.06	-0.04	0.45	-14.5	-25.8		
2,376.0	5.14	221.48	2,372.4	-41.7	-75.4	0.35	-0.35	0.09	-16.7	-25.4		
2,471.0	5.11	218.64	2,467.0	-48.2	-80.8	0.27	-0.03	-2.99	-17.3	-25.7		
2,567.0	4.70	216.80	2,562.6	-54.7	-85.8	0.46	-0.43	-1.92	-18.0	-25.5		
2,662.0	4.54	211.96	2,657.3	-61.0	-90.2	0.44	-0.17	-5.09	-17.0	-25.8		



EOG Resources

Final PVA

<b>Company:</b>	Midland	<b>Local Co-ordinate Reference:</b>	Well #726H
<b>Project:</b>	Lea County, NM (NAD 83 NME)	<b>TVD Reference:</b>	KB = 26' @ 3366.0usft
<b>Site:</b>	Appaloosa 18 Fed Com	<b>MD Reference:</b>	KB = 26' @ 3366.0usft
<b>Well:</b>	#726H	<b>North Reference:</b>	Grid
<b>Wellbore:</b>	OH	<b>Survey Calculation Method:</b>	Minimum Curvature
<b>Design:</b>	OH	<b>Database:</b>	PEDM

Survey												
MD (usft)	Inc (°)	Azi (azimuth) (°)		TVD (usft)	N/S (usft)	E/W (usft)	DLeg (°/100usft)	Build (°/100usft)	Turn (°/100usft)	High to Plan (usft)	Right to Plan (usft)	
2,757.0	4.22	207.18		2,752.0	-67.3	-93.7	0.51	-0.34	-5.03	-15.7		-25.5
2,851.0	3.98	202.43		2,845.8	-73.4	-96.6	0.44	-0.26	-5.05	-14.2		-24.5
2,947.0	3.97	200.29		2,941.6	-79.6	-99.0	0.15	-0.01	-2.23	-13.8		-22.4
3,041.0	3.50	191.42		3,035.4	-85.4	-100.7	0.79	-0.50	-9.44	-10.8		-21.1
3,136.0	3.58	173.89		3,130.2	-91.2	-100.9	1.14	0.08	-18.45	-5.4		-19.1
3,232.0	3.77	156.40		3,226.0	-97.1	-99.4	1.18	0.20	-18.22	-3.0		-14.6
3,327.0	4.09	172.58		3,320.8	-103.3	-97.7	1.21	0.34	17.03	-9.2		-7.1
3,422.0	3.67	164.11		3,415.6	-109.6	-96.4	0.75	-0.44	-8.92	-11.1		-3.1
3,517.0	3.88	156.45		3,510.3	-115.5	-94.3	0.57	0.22	-8.06	-14.4		1.2
3,635.0	5.22	192.12		3,628.0	-124.4	-93.8	2.60	1.14	30.23	-12.6		16.1
3,708.0	4.87	205.49		3,700.7	-130.4	-95.9	1.68	-0.48	18.32	-10.1		21.0
3,804.0	4.44	225.34		3,796.4	-136.7	-100.3	1.73	-0.45	20.68	-3.3		24.5
3,899.0	2.76	225.49		3,891.2	-140.9	-104.5	1.77	-1.77	0.16	-2.5		24.4
3,994.0	0.17	297.80		3,986.2	-142.4	-106.3	2.86	-2.73	76.12	23.5		5.6
4,089.0	0.76	265.57		4,081.2	-142.4	-107.0	0.66	0.62	-33.93	21.1		12.9
4,185.0	0.52	266.96		4,177.2	-142.5	-108.1	0.25	-0.25	1.45	25.3		7.9
4,281.0	1.21	253.52		4,273.2	-142.8	-109.5	0.74	0.72	-14.00	27.2		10.2
4,376.0	0.96	238.79		4,368.1	-143.5	-111.1	0.39	-0.26	-15.51	28.4		14.9
4,472.0	1.77	124.18		4,464.1	-144.7	-110.6	2.44	0.84	-119.39	-27.7		25.5
4,567.0	4.06	108.06		4,559.0	-146.6	-106.2	2.54	2.41	-16.97	-41.4		22.4
4,662.0	2.40	107.80		4,653.8	-148.3	-101.1	1.75	-1.75	-0.27	-49.9		28.0
4,758.0	1.55	143.35		4,749.8	-149.9	-98.4	1.51	-0.89	37.03	-26.2		59.6
4,854.0	2.78	145.63		4,845.7	-152.9	-96.3	1.28	1.28	2.37	-26.0		67.2
5,044.0	2.87	116.38		5,035.5	-158.8	-89.4	0.75	0.05	-15.39	-68.5		56.3
5,139.0	0.17	305.30		5,130.5	-159.8	-87.4	3.20	-2.84	-180.08	62.3		-72.9
5,234.0	1.11	284.32		5,225.4	-159.5	-88.4	1.00	0.99	-22.08	85.3		-49.4
5,329.0	1.01	265.96		5,320.4	-159.3	-90.2	0.37	-0.11	-19.33	95.6		-21.0



EOG Resources

Final PVA

<b>Company:</b>	Midland	<b>Local Co-ordinate Reference:</b>	Well #726H
<b>Project:</b>	Lea County, NM (NAD 83 NME)	<b>TVD Reference:</b>	KB = 26' @ 3366.0usft
<b>Site:</b>	Appaloosa 18 Fed Com	<b>MD Reference:</b>	KB = 26' @ 3366.0usft
<b>Well:</b>	#726H	<b>North Reference:</b>	Grid
<b>Wellbore:</b>	OH	<b>Survey Calculation Method:</b>	Minimum Curvature
<b>Design:</b>	OH	<b>Database:</b>	PEDM

Survey												
MD (usft)	Inc (°)	Azi (azimuth) (°)	TVD (usft)	N/S (usft)	E/W (usft)	DLeg (°/100usft)	Build (°/100usft)	Turn (°/100usft)	High to Plan (usft)	Right to Plan (usft)		
5,425.0	0.83	281.13	5,416.4	-159.2	-91.7	0.31	-0.19	15.80	85.2	-45.1		
5,520.0	0.95	288.15	5,511.4	-158.8	-93.1	0.17	0.13	7.39	77.6	-55.1		
5,614.0	0.91	294.20	5,605.4	-158.3	-94.5	0.11	-0.04	6.44	69.8	-62.9		
5,710.0	1.14	311.74	5,701.4	-157.3	-95.9	0.40	0.24	18.27	46.0	-80.8		
5,805.0	1.23	320.19	5,796.4	-155.9	-97.3	0.21	0.09	8.89	31.6	-86.5		
5,901.0	1.17	318.09	5,892.3	-154.4	-98.6	0.08	-0.06	-2.19	32.8	-85.3		
5,996.0	1.32	318.87	5,987.3	-152.9	-100.0	0.16	0.16	0.82	29.5	-85.7		
6,091.0	1.27	315.69	6,082.3	-151.3	-101.4	0.09	-0.05	-3.35	32.1	-84.0		
6,187.0	1.14	314.06	6,178.3	-149.9	-102.9	0.14	-0.14	-1.70	32.5	-83.1		
6,283.0	1.00	311.09	6,274.3	-148.6	-104.2	0.16	-0.15	-3.09	34.9	-81.4		
6,378.0	0.99	320.72	6,369.2	-147.5	-105.3	0.18	-0.01	10.14	19.2	-85.9		
6,473.0	1.27	317.76	6,464.2	-146.1	-106.6	0.30	0.29	-3.12	21.7	-84.9		
6,569.0	1.13	321.94	6,560.2	-144.5	-107.9	0.17	-0.15	4.35	13.5	-86.1		
6,663.0	1.17	330.04	6,654.2	-143.0	-108.9	0.18	0.04	8.62	-0.7	-87.1		
6,759.0	1.15	329.81	6,750.2	-141.3	-109.9	0.02	-0.02	-0.24	-2.2	-87.1		
6,854.0	1.20	316.35	6,845.1	-139.7	-111.0	0.29	0.05	-14.17	16.2	-85.4		
6,949.0	1.16	320.72	6,940.1	-138.3	-112.3	0.10	-0.04	4.60	7.6	-86.3		
7,044.0	1.44	327.29	7,035.1	-136.5	-113.6	0.33	0.29	6.92	-4.4	-86.5		
7,140.0	0.63	263.54	7,131.1	-135.6	-114.8	1.35	-0.84	-66.41	74.6	-43.3		
7,235.0	0.78	241.84	7,226.1	-135.9	-115.9	0.32	0.16	-22.84	84.2	-12.9		
7,331.0	0.80	235.93	7,322.1	-136.6	-117.0	0.09	0.02	-6.16	83.7	-4.2		
7,425.0	1.02	218.16	7,416.1	-137.6	-118.0	0.38	0.23	-18.90	79.6	21.4		
7,521.0	1.16	224.30	7,512.0	-139.0	-119.3	0.19	0.15	6.40	79.6	12.8		
7,617.0	1.16	220.01	7,608.0	-140.4	-120.6	0.09	0.00	-4.47	76.4	18.7		
7,712.0	0.64	155.08	7,703.0	-141.7	-121.0	1.12	-0.55	-68.35	14.6	76.3		
7,807.0	0.28	232.98	7,798.0	-142.3	-120.9	0.68	-0.38	82.00	77.3	2.3		
7,903.0	0.31	238.53	7,894.0	-142.6	-121.3	0.04	0.03	5.78	76.7	-5.2		



EOG Resources

Final PVA

**Company:** Midland  
**Project:** Lea County, NM (NAD 83 NME)  
**Site:** Appaloosa 18 Fed Com  
**Well:** #726H  
**Wellbore:** OH  
**Design:** OH

**Local Co-ordinate Reference:** Well #726H  
**TVD Reference:** KB = 26' @ 3366.0usft  
**MD Reference:** KB = 26' @ 3366.0usft  
**North Reference:** Grid  
**Survey Calculation Method:** Minimum Curvature  
**Database:** PEDM

Survey												
MD (usft)	Inc (°)	Azi (azimuth) (°)	TVD (usft)	N/S (usft)	E/W (usft)	DLeg (°/100usft)	Build (°/100usft)	Turn (°/100usft)	High to Plan (usft)	Right to Plan (usft)		
7,998.0	0.64	213.48	7,989.0	-143.1	-121.8	0.40	0.35	-26.37	70.9	27.7		
8,094.0	0.91	197.16	8,085.0	-144.3	-122.4	0.36	0.28	-17.00	59.0	46.3		
8,189.0	0.90	197.17	8,180.0	-145.7	-122.8	0.01	-0.01	0.01	57.5	46.3		
8,284.0	0.97	189.40	8,275.0	-147.3	-123.2	0.15	0.07	-8.18	49.1	53.5		
8,380.0	1.15	183.70	8,371.0	-149.0	-123.3	0.22	0.19	-5.94	41.8	58.1		
8,475.0	1.01	173.02	8,465.9	-150.8	-123.3	0.26	-0.15	-11.24	28.6	64.6		
8,666.0	0.91	185.30	8,656.9	-154.0	-123.2	0.12	-0.05	6.43	38.5	57.5		
8,762.0	0.72	197.39	8,752.9	-155.3	-123.5	0.27	-0.20	12.59	48.3	48.3		
8,857.0	0.84	176.61	8,847.9	-156.6	-123.6	0.32	0.13	-21.87	26.8	62.1		
8,952.0	0.60	161.84	8,942.9	-157.7	-123.4	0.32	-0.25	-15.55	8.9	66.7		
9,048.0	0.62	182.63	9,038.9	-158.7	-123.3	0.23	0.02	21.66	31.0	59.3		
9,143.0	0.72	171.70	9,133.9	-159.8	-123.2	0.17	0.11	-11.51	18.1	64.0		
9,239.0	0.57	184.12	9,229.9	-160.9	-123.2	0.21	-0.16	12.94	30.4	58.8		
9,334.0	0.58	188.51	9,324.9	-161.9	-123.3	0.05	0.01	4.62	33.8	56.3		
9,430.0	0.51	207.81	9,420.9	-162.7	-123.6	0.20	-0.07	20.10	49.7	42.1		
9,525.0	0.58	242.60	9,515.9	-163.3	-124.2	0.35	0.07	36.62	64.0	6.5		
9,620.0	0.36	298.31	9,610.9	-163.4	-124.9	0.51	-0.23	58.64	40.9	-48.8		
9,715.0	0.55	351.56	9,705.8	-162.8	-125.2	0.47	0.20	56.05	-15.3	-61.7		
9,811.0	0.76	40.29	9,801.8	-161.9	-124.9	0.60	0.22	50.76	-57.4	-28.9		
9,906.0	0.18	294.33	9,896.8	-161.3	-124.6	0.87	-0.61	-111.54	43.6	-47.9		
10,001.0	0.71	194.81	9,991.8	-161.8	-124.9	0.80	0.56	-104.76	39.4	50.7		
10,096.0	0.89	159.64	10,086.8	-163.1	-124.8	0.54	0.19	-37.02	1.8	63.8		
10,191.0	0.74	116.58	10,181.8	-164.1	-124.0	0.65	-0.16	-45.33	-43.4	47.4		
10,287.0	0.81	114.43	10,277.8	-164.6	-122.8	0.08	0.07	-2.24	-46.5	45.7		
10,382.0	0.69	30.55	10,372.8	-164.4	-121.9	1.06	-0.13	-88.29	-51.0	-42.0		
10,477.0	0.68	46.61	10,467.8	-163.5	-121.2	0.20	-0.01	16.91	-61.8	-26.1		
10,572.0	0.54	28.58	10,562.8	-162.7	-120.6	0.25	-0.15	-18.98	-51.6	-44.1		



EOG Resources

Final PVA

<b>Company:</b>	Midland	<b>Local Co-ordinate Reference:</b>	Well #726H
<b>Project:</b>	Lea County, NM (NAD 83 NME)	<b>TVD Reference:</b>	KB = 26' @ 3366.0usft
<b>Site:</b>	Appaloosa 18 Fed Com	<b>MD Reference:</b>	KB = 26' @ 3366.0usft
<b>Well:</b>	#726H	<b>North Reference:</b>	Grid
<b>Wellbore:</b>	OH	<b>Survey Calculation Method:</b>	Minimum Curvature
<b>Design:</b>	OH	<b>Database:</b>	PEDM

Survey												
MD (usft)	Inc (°)	Azi (azimuth) (°)	TVD (usft)	N/S (usft)	E/W (usft)	DLeg (°/100usft)	Build (°/100usft)	Turn (°/100usft)	High to Plan (usft)	Right to Plan (usft)		
10,668.0	0.48	86.75	10,658.8	-162.3	-119.9	0.52	-0.06	60.59	-65.3	21.0		
10,763.0	0.10	343.26	10,753.8	-162.2	-119.6	0.54	-0.40	-108.94	-5.2	-68.8		
10,858.0	0.47	356.55	10,848.8	-161.8	-119.6	0.39	0.39	13.99	-21.3	-65.8		
10,953.0	0.94	19.28	10,943.8	-160.6	-119.4	0.57	0.49	23.93	-46.2	-52.3		
11,048.0	0.90	17.17	11,038.8	-159.2	-118.9	0.06	-0.04	-2.22	-45.8	-54.0		
11,142.0	1.06	4.51	11,132.8	-157.6	-118.6	0.29	0.17	-13.47	-34.4	-62.9		
11,238.0	1.33	7.24	11,228.7	-155.6	-118.4	0.29	0.28	2.84	-39.4	-61.1		
11,333.0	1.19	16.61	11,323.7	-153.6	-118.0	0.26	-0.15	9.86	-50.9	-53.7		
11,429.0	1.52	19.38	11,419.7	-151.4	-117.3	0.35	0.34	2.89	-55.7	-51.1		
11,524.0	0.86	3.20	11,514.7	-149.5	-116.8	0.77	-0.69	-17.03	-41.2	-65.0		
11,619.0	1.39	324.38	11,609.6	-147.9	-117.5	0.95	0.56	-40.86	6.9	-76.9		
11,715.0	1.53	307.20	11,705.6	-146.2	-119.2	0.48	0.15	-17.90	26.9	-71.7		
11,825.0	1.01	280.53	11,815.6	-145.1	-121.3	0.70	-0.47	-24.25	54.0	-52.7		
11,883.0	0.67	282.23	11,873.6	-144.9	-122.1	0.59	-0.59	2.93	51.6	-54.2		
11,978.0	0.71	270.35	11,968.6	-144.8	-123.2	0.16	0.04	-12.51	60.5	-42.6		
12,074.0	0.66	259.70	12,064.6	-144.9	-124.4	0.14	-0.05	-11.09	66.2	-30.8		
12,132.0	0.69	268.76	12,122.6	-145.0	-125.1	0.19	0.04	15.62	59.8	-40.8		
<b>KOP, MD:12132.0', TVD:12122.6', N/S:-145.0', E/W:-125.1', INC:0.69</b>												
12,169.0	0.71	274.12	12,159.6	-144.9	-125.5	0.19	0.07	14.48	55.3	-46.1		
12,265.0	1.69	329.34	12,255.5	-143.7	-126.8	1.47	1.02	57.52	-8.1	-71.3		
12,361.0	7.93	343.65	12,351.2	-136.1	-129.4	6.57	6.50	14.91	-26.2	-64.5		
12,361.1	7.93	343.65	12,351.3	-136.1	-129.4	0.00	0.00	0.00	-26.2	-64.5		
<b>FTP Crossing, MD:12361.1', TVD:12351.3', N/S:-136.1', E/W:-129.4', INC:7.93</b>												
12,456.0	9.38	354.02	12,445.1	-122.1	-132.1	2.24	1.53	10.93	-23.0	-55.2		
12,471.0	10.06	351.33	12,459.9	-119.6	-132.4	5.45	4.53	-17.93	-16.7	-55.3		
12,551.0	18.10	342.40	12,537.4	-100.8	-137.2	10.38	10.05	-11.16	10.6	-46.3		
12,646.0	37.07	356.17	12,621.3	-57.8	-143.6	20.94	19.97	14.49	19.5	-40.5		



EOG Resources

Final PVA

<b>Company:</b>	Midland	<b>Local Co-ordinate Reference:</b>	Well #726H
<b>Project:</b>	Lea County, NM (NAD 83 NME)	<b>TVD Reference:</b>	KB = 26' @ 3366.0usft
<b>Site:</b>	Appaloosa 18 Fed Com	<b>MD Reference:</b>	KB = 26' @ 3366.0usft
<b>Well:</b>	#726H	<b>North Reference:</b>	Grid
<b>Wellbore:</b>	OH	<b>Survey Calculation Method:</b>	Minimum Curvature
<b>Design:</b>	OH	<b>Database:</b>	PEDM

Survey												
MD (usft)	Inc (°)	Azi (azimuth) (°)	TVD (usft)	N/S (usft)	E/W (usft)	DLeg (°/100usft)	Build (°/100usft)	Turn (°/100usft)	High to Plan (usft)	Right to Plan (usft)		
12,742.0	57.59	359.28	12,686.0	12.4	-146.1	21.50	21.37	3.24	23.6	-39.2		
12,829.0	76.52	1.35	12,719.8	92.1	-145.6	21.87	21.76	2.38	14.2	-40.6		
12,956.0	79.86	0.38	12,745.8	216.4	-143.7	2.73	2.63	-0.76	4.5	-43.2		
13,051.0	87.32	357.29	12,756.4	310.7	-145.6	8.49	7.85	-3.25	9.7	-41.9		
13,147.0	93.26	356.06	12,755.9	406.5	-151.2	6.32	6.19	-1.28	10.3	-37.0		
13,242.0	91.11	356.16	12,752.3	501.2	-157.6	2.27	-2.26	0.11	8.0	-31.2		
13,337.0	91.36	356.50	12,750.2	596.0	-163.7	0.44	0.26	0.36	7.3	-25.8		
13,433.0	93.10	358.31	12,746.5	691.8	-168.1	2.61	1.81	1.89	4.8	-22.2		
13,528.0	92.04	359.63	12,742.2	786.7	-169.8	1.78	-1.12	1.39	1.8	-21.1		
13,624.0	92.95	359.40	12,738.1	882.6	-170.6	0.98	0.95	-0.24	-1.1	-21.0		
13,719.0	92.50	358.54	12,733.5	977.5	-172.3	1.02	-0.47	-0.91	-4.4	-20.0		
13,814.0	87.86	356.38	12,733.2	1,072.4	-176.5	5.39	-4.88	-2.27	-3.3	-16.4		
13,910.0	90.49	357.17	12,734.6	1,168.2	-181.9	2.86	2.74	0.82	-0.7	-11.7		
14,005.0	90.52	357.23	12,733.8	1,263.1	-186.5	0.07	0.03	0.06	-0.3	-7.7		
14,101.0	91.47	356.83	12,732.1	1,358.9	-191.5	1.07	0.99	-0.42	-0.7	-3.4		
14,196.0	91.92	356.86	12,729.3	1,453.8	-196.7	0.47	0.47	0.03	-2.2	1.1		
14,291.0	92.23	356.72	12,725.9	1,548.5	-202.1	0.36	0.33	-0.15	-4.8	5.8		
14,386.0	90.55	353.48	12,723.6	1,643.1	-210.2	3.84	-1.77	-3.41	-6.6	13.2		
14,500.0	89.73	352.09	12,723.3	1,756.2	-224.5	1.42	-0.72	-1.22	-6.4	26.7		
14,576.0	90.60	350.13	12,723.1	1,831.3	-236.2	2.82	1.14	-2.58	-6.2	37.9		
14,671.0	90.60	352.69	12,722.1	1,925.2	-250.4	2.69	0.00	2.69	-6.7	51.4		
14,766.0	98.10	358.36	12,714.9	2,019.6	-257.8	9.88	7.89	5.97	-13.2	58.2		
14,861.0	91.80	1.05	12,706.7	2,114.2	-258.3	7.21	-6.63	2.83	-21.2	58.0		
14,972.0	90.43	2.83	12,704.5	2,225.1	-254.5	2.02	-1.23	1.60	-22.8	53.4		
15,051.0	90.52	4.31	12,703.9	2,303.9	-249.6	1.88	0.11	1.87	-23.1	47.9		
15,147.0	88.78	3.34	12,704.4	2,399.7	-243.2	2.08	-1.81	-1.01	-22.0	40.9		
15,242.0	91.13	2.18	12,704.5	2,494.6	-238.6	2.76	2.47	-1.22	-21.5	35.6		



EOG Resources

Final PVA

**Company:** Midland  
**Project:** Lea County, NM (NAD 83 NME)  
**Site:** Appaloosa 18 Fed Com  
**Well:** #726H  
**Wellbore:** OH  
**Design:** OH

**Local Co-ordinate Reference:** Well #726H  
**TVD Reference:** KB = 26' @ 3366.0usft  
**MD Reference:** KB = 26' @ 3366.0usft  
**North Reference:** Grid  
**Survey Calculation Method:** Minimum Curvature  
**Database:** PEDM

Survey												
MD (usft)	Inc (°)	Azi (azimuth) (°)	TVD (usft)	N/S (usft)	E/W (usft)	DLeg (°/100usft)	Build (°/100usft)	Turn (°/100usft)	High to Plan (usft)	Right to Plan (usft)		
15,337.0	91.11	1.66	12,702.7	2,589.5	-235.5	0.55	-0.02	-0.55	-22.8	31.8		
15,433.0	88.00	359.09	12,703.4	2,685.5	-234.8	4.20	-3.24	-2.68	-21.6	30.5		
15,528.0	89.90	1.93	12,705.1	2,780.4	-234.0	3.60	2.00	2.99	-19.4	28.9		
15,623.0	90.55	2.09	12,704.8	2,875.4	-230.7	0.70	0.68	0.17	-19.3	24.9		
15,718.0	90.63	1.96	12,703.8	2,970.3	-227.3	0.16	0.08	-0.14	-19.8	20.9		
15,814.0	90.88	2.82	12,702.5	3,066.2	-223.3	0.93	0.26	0.90	-20.6	16.2		
15,909.0	91.28	2.44	12,700.7	3,161.1	-218.9	0.58	0.42	-0.40	-21.9	11.2		
16,004.0	92.03	0.56	12,698.0	3,256.0	-216.5	2.13	0.79	-1.98	-24.2	8.0		
16,099.0	89.76	1.04	12,696.5	3,351.0	-215.1	2.44	-2.39	0.51	-25.2	6.0		
16,194.0	89.59	1.05	12,697.0	3,446.0	-213.4	0.18	-0.18	0.01	-24.2	3.6		
16,290.0	88.95	1.79	12,698.3	3,541.9	-211.0	1.02	-0.67	0.77	-22.3	0.6		
16,385.0	88.08	1.35	12,700.7	3,636.9	-208.4	1.03	-0.92	-0.46	-18.9	-2.7		
16,480.0	90.15	0.86	12,702.2	3,731.8	-206.6	2.24	2.18	-0.52	-16.5	-5.2		
16,576.0	90.29	359.62	12,701.8	3,827.8	-206.2	1.30	0.15	-1.29	-15.9	-6.3		
16,671.0	90.04	358.69	12,701.6	3,922.8	-207.6	1.01	-0.26	-0.98	-15.3	-5.5		
16,767.0	87.72	356.89	12,703.4	4,018.7	-211.3	3.06	-2.42	-1.87	-12.5	-2.5		
16,893.0	90.49	358.39	12,705.4	4,144.6	-216.5	2.50	2.20	1.19	-9.3	1.8		
16,957.0	91.98	359.57	12,704.0	4,208.6	-217.6	2.97	2.33	1.84	-10.0	2.4		
17,053.0	92.84	359.06	12,700.0	4,304.5	-218.8	1.04	0.90	-0.53	-13.1	2.9		
17,148.0	91.95	0.44	12,696.0	4,399.4	-219.2	1.73	-0.94	1.45	-16.2	2.7		
17,244.0	91.11	0.05	12,693.5	4,495.3	-218.8	0.96	-0.87	-0.41	-17.8	1.6		
17,339.0	90.49	359.06	12,692.1	4,590.3	-219.5	1.23	-0.65	-1.04	-18.2	1.6		
17,434.0	90.49	359.39	12,691.3	4,685.3	-220.8	0.35	0.00	0.35	-18.1	2.2		
17,530.0	91.33	1.85	12,689.8	4,781.3	-219.7	2.71	0.87	2.56	-18.7	0.5		
17,625.0	89.03	1.39	12,689.5	4,876.3	-217.1	2.47	-2.42	-0.48	-18.0	-2.8		
17,721.0	91.97	359.54	12,688.7	4,972.2	-216.3	3.62	3.06	-1.93	-17.9	-4.3		
17,816.0	91.02	358.89	12,686.2	5,067.2	-217.6	1.21	-1.00	-0.68	-19.5	-3.7		



EOG Resources

Final PVA

**Company:** Midland  
**Project:** Lea County, NM (NAD 83 NME)  
**Site:** Appaloosa 18 Fed Com  
**Well:** #726H  
**Wellbore:** OH  
**Design:** OH

**Local Co-ordinate Reference:** Well #726H  
**TVD Reference:** KB = 26' @ 3366.0usft  
**MD Reference:** KB = 26' @ 3366.0usft  
**North Reference:** Grid  
**Survey Calculation Method:** Minimum Curvature  
**Database:** PEDM

Survey												
MD (usft)	Inc (°)	Azi (azimuth) (°)	TVD (usft)	N/S (usft)	E/W (usft)	DLeg (°/100usft)	Build (°/100usft)	Turn (°/100usft)	High to Plan (usft)	Right to Plan (usft)		
17,911.0	88.62	357.16	12,686.5	5,162.1	-220.9	3.11	-2.53	-1.82	-18.3	-1.1		
18,007.0	87.91	354.99	12,689.4	5,257.8	-227.4	2.38	-0.74	-2.26	-14.4	4.8		
18,102.0	90.01	356.01	12,691.1	5,352.5	-234.9	2.46	2.21	1.07	-11.8	11.6		
18,197.0	91.52	358.44	12,689.8	5,447.4	-239.5	3.01	1.59	2.56	-12.1	15.5		
18,293.0	92.50	358.94	12,686.5	5,543.3	-241.7	1.15	1.02	0.52	-14.5	17.0		
18,388.0	91.27	358.65	12,683.3	5,638.2	-243.7	1.33	-1.29	-0.31	-16.5	18.4		
18,484.0	89.65	358.27	12,682.6	5,734.2	-246.2	1.73	-1.69	-0.40	-16.0	20.3		
18,579.0	91.14	359.12	12,681.9	5,829.2	-248.4	1.81	1.57	0.89	-15.4	21.8		
18,674.0	89.62	1.31	12,681.3	5,924.2	-248.0	2.81	-1.60	2.31	-14.8	20.7		
18,769.0	93.07	2.30	12,679.1	6,019.1	-245.1	3.78	3.63	1.04	-15.8	17.0		
18,863.0	92.87	2.45	12,674.2	6,112.9	-241.2	0.27	-0.21	0.16	-19.5	12.5		
18,958.0	89.51	1.13	12,672.2	6,207.8	-238.2	3.80	-3.54	-1.39	-20.2	8.9		
19,054.0	88.22	0.08	12,674.1	6,303.8	-237.2	1.73	-1.34	-1.09	-17.0	7.2		
19,149.0	88.48	0.00	12,676.9	6,398.7	-237.1	0.29	0.27	-0.08	-13.1	6.4		
19,244.0	88.87	0.91	12,679.0	6,493.7	-236.4	1.04	0.41	0.96	-9.6	5.0		
19,339.0	89.14	0.50	12,680.7	6,588.7	-235.2	0.52	0.28	-0.43	-6.8	3.2		
19,435.0	88.95	359.21	12,682.3	6,684.6	-235.4	1.36	-0.20	-1.34	-3.9	2.7		
19,530.0	91.97	2.64	12,681.5	6,779.6	-233.9	4.81	3.18	3.61	-3.4	0.5		
19,626.0	91.67	2.38	12,678.5	6,875.5	-229.7	0.41	-0.31	-0.27	-5.2	-4.4		
19,720.3	92.31	2.27	12,675.2	6,969.6	-225.9	0.69	0.68	-0.12	-7.3	-8.9		
19,817.0	88.48	358.25	12,674.5	7,066.3	-225.4	5.74	-3.96	-4.16	-6.7	-10.0		
19,912.0	87.24	357.59	12,678.1	7,161.2	-228.9	1.48	-1.31	-0.69	-1.4	-7.2		
20,007.0	88.87	357.52	12,681.3	7,256.0	-232.9	1.72	1.72	-0.07	3.8	-3.8		
20,122.0	91.39	358.28	12,681.1	7,370.9	-237.2	2.29	2.19	0.66	5.9	-0.4		
<b>Last MWD Survey (MD=20122.0')</b>												
20,320.0	91.39	358.28	12,676.3	7,568.8	-243.1	0.00	0.00	0.00	5.2	4.1		
<b>Projection to Bit (MD=20320.0')</b>												



**EOG Resources**

Final PVA

<b>Company:</b>	Midland	<b>Local Co-ordinate Reference:</b>	Well #726H
<b>Project:</b>	Lea County, NM (NAD 83 NME)	<b>TVD Reference:</b>	KB = 26' @ 3366.0usft
<b>Site:</b>	Appaloosa 18 Fed Com	<b>MD Reference:</b>	KB = 26' @ 3366.0usft
<b>Well:</b>	#726H	<b>North Reference:</b>	Grid
<b>Wellbore:</b>	OH	<b>Survey Calculation Method:</b>	Minimum Curvature
<b>Design:</b>	OH	<b>Database:</b>	PEDM

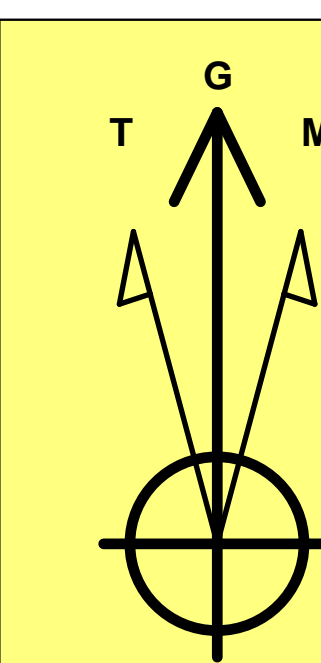
Design Annotations				
Measured Depth (usft)	Vertical Depth (usft)	Local Coordinates		Comment
		+N/-S (usft)	+E/-W (usft)	
12,132.0	12,122.6	-145.0	-125.1	KOP, MD:12132.0', TVD:12122.6',N/S:-145.0', E/W:-125.1', INC:0.69
12,361.1	12,351.3	-136.1	-129.4	FTP Crossing, MD:12361.1', TVD:12351.3',N/S:-136.1', E/W:-129.4', INC:7.93
20,122.0	12,681.1	7,370.9	-237.2	Last MWD Survey (MD=20122.0')
20,320.0	12,676.3	7,568.8	-243.1	Projection to Bit (MD=20320.0')

Checked By: \_\_\_\_\_ Approved By: \_\_\_\_\_ Date: \_\_\_\_\_



PROJECT DETAILS: Lea County, NM (NAD 83 NME)

Geodetic System: US State Plane 1983  
Datum: North American Datum 1983  
Ellipsoid: GRS 1980  
Zone: New Mexico Eastern Zone  
System Datum: Mean Sea Level



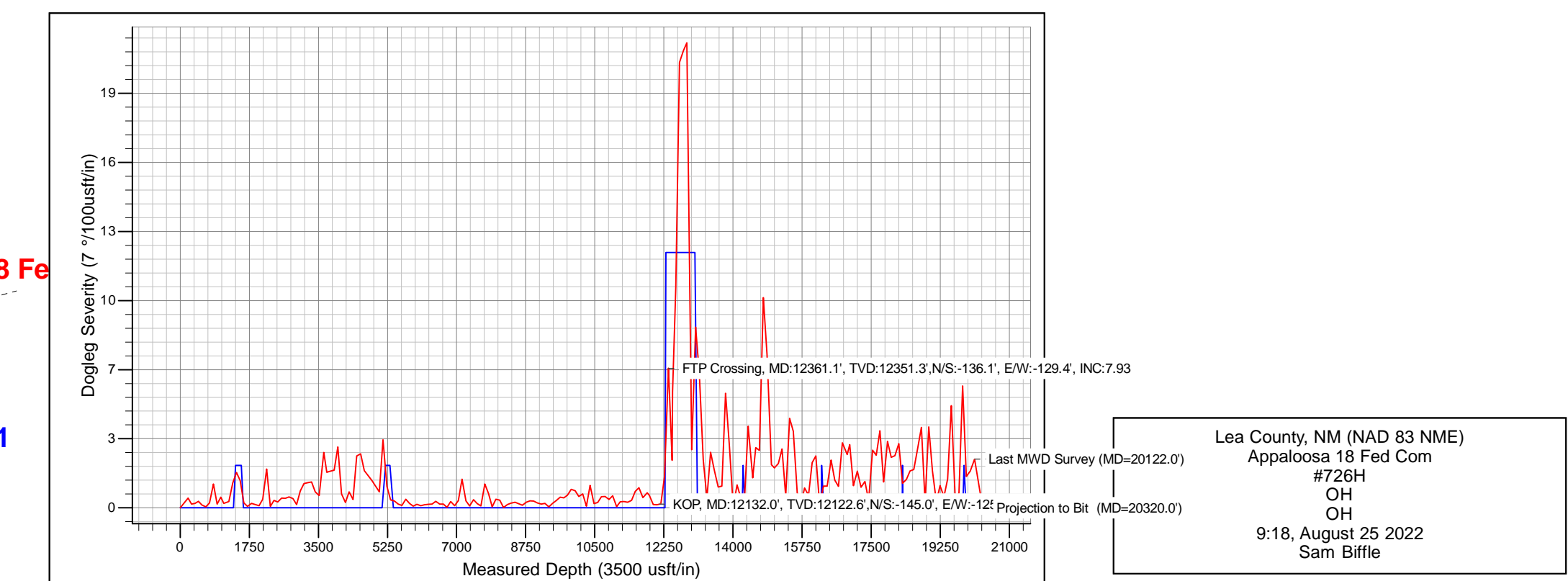
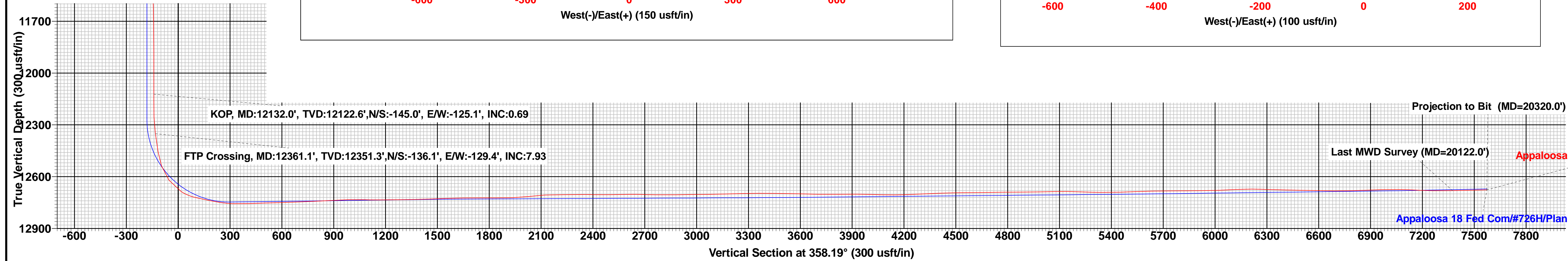
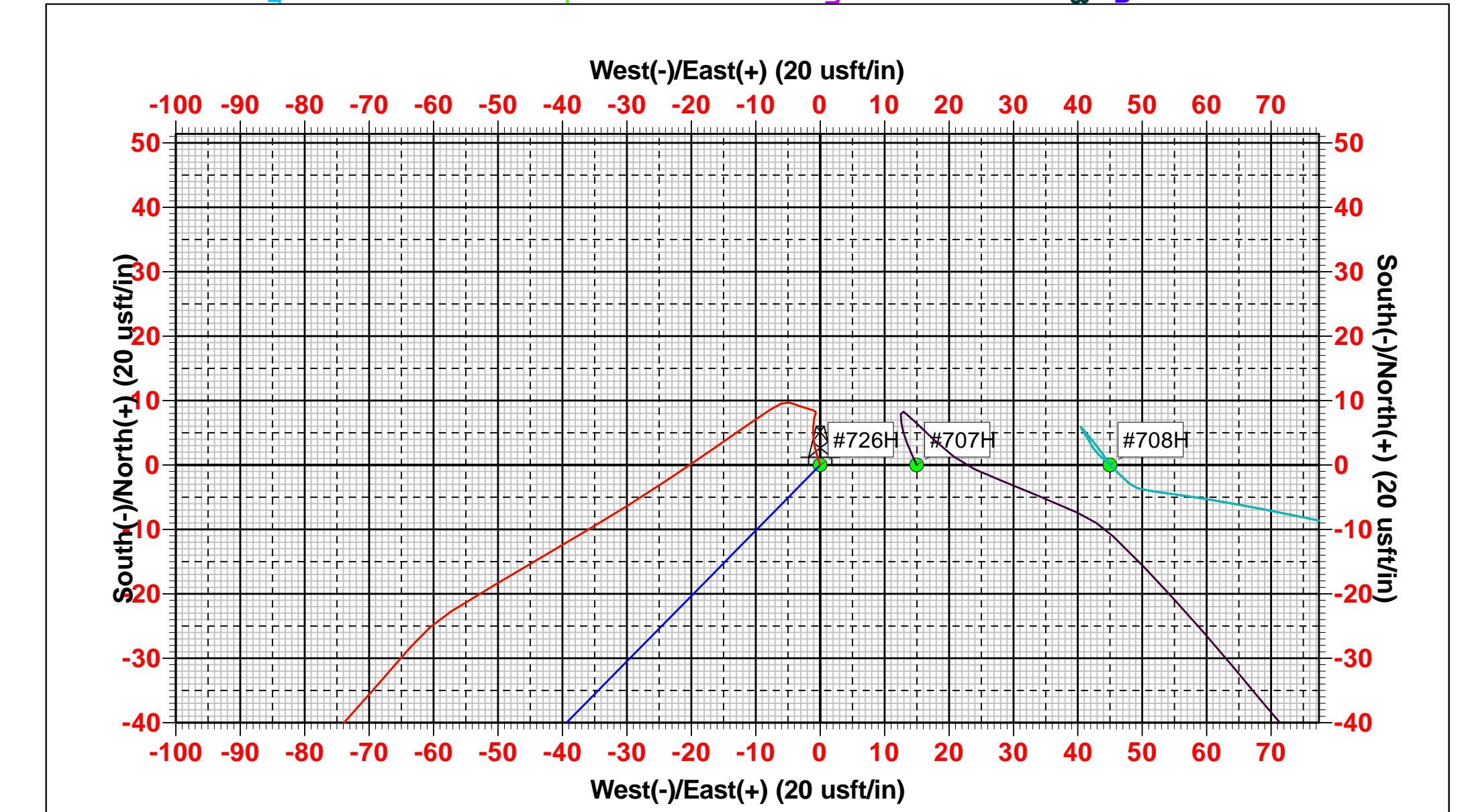
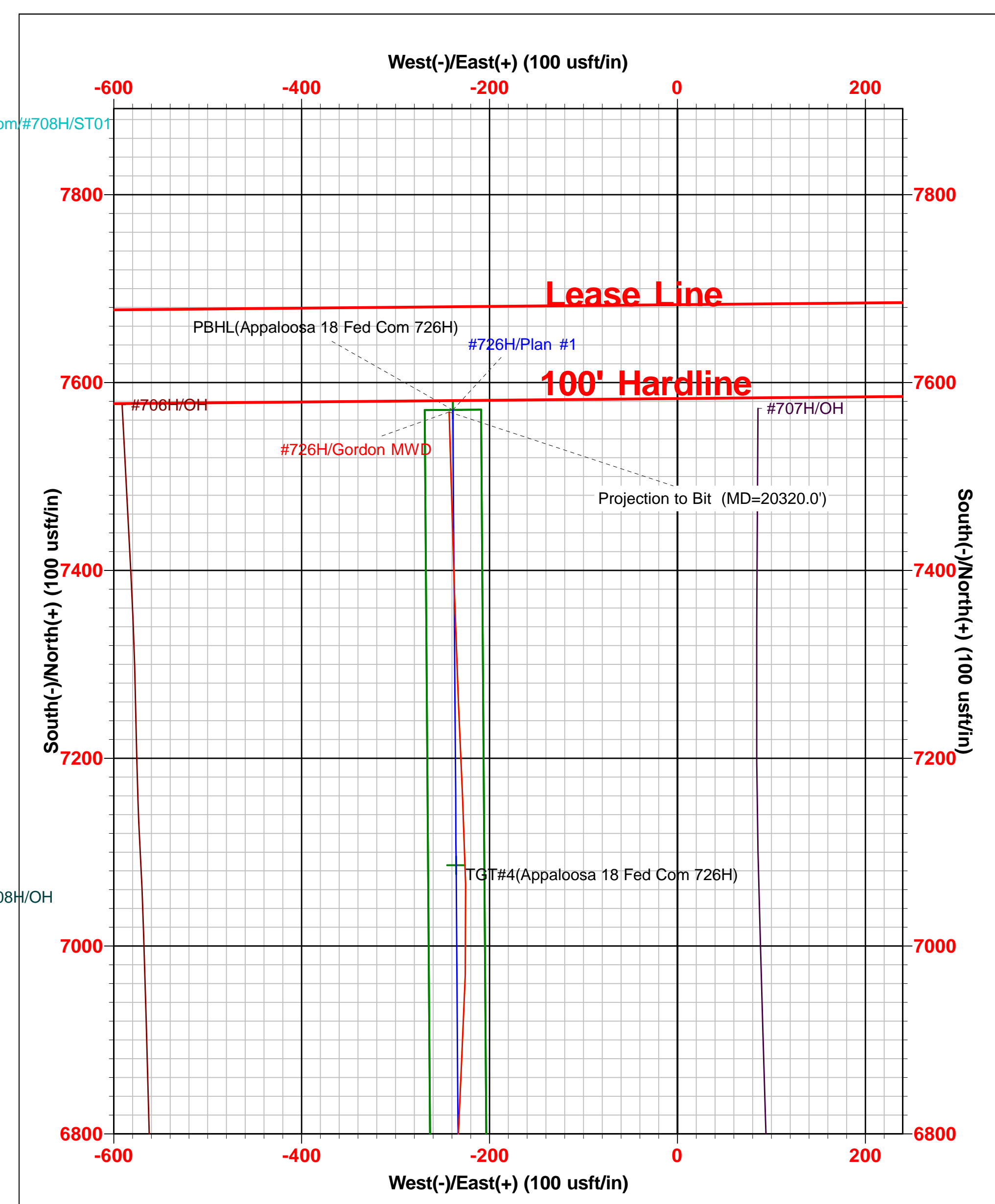
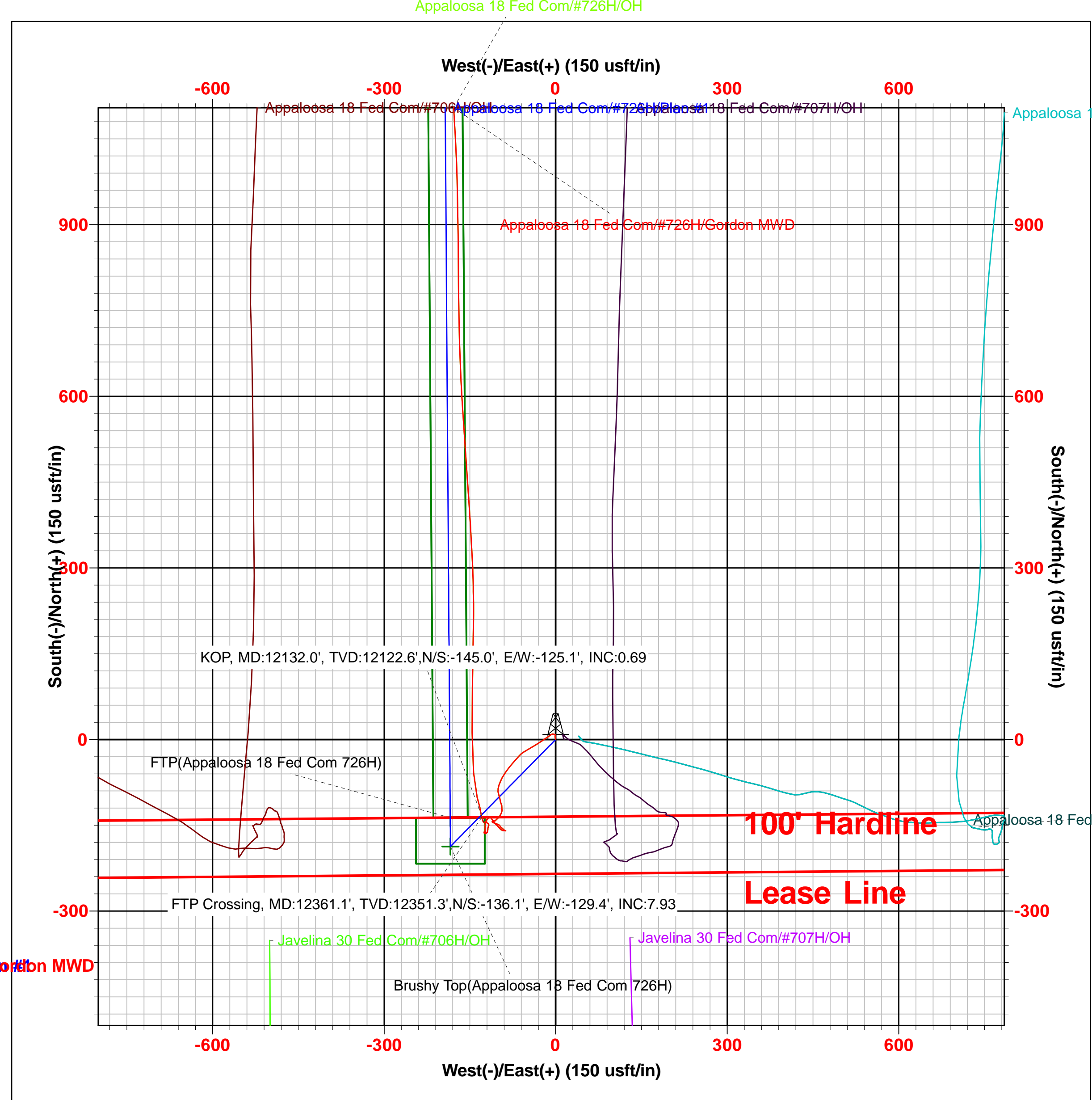
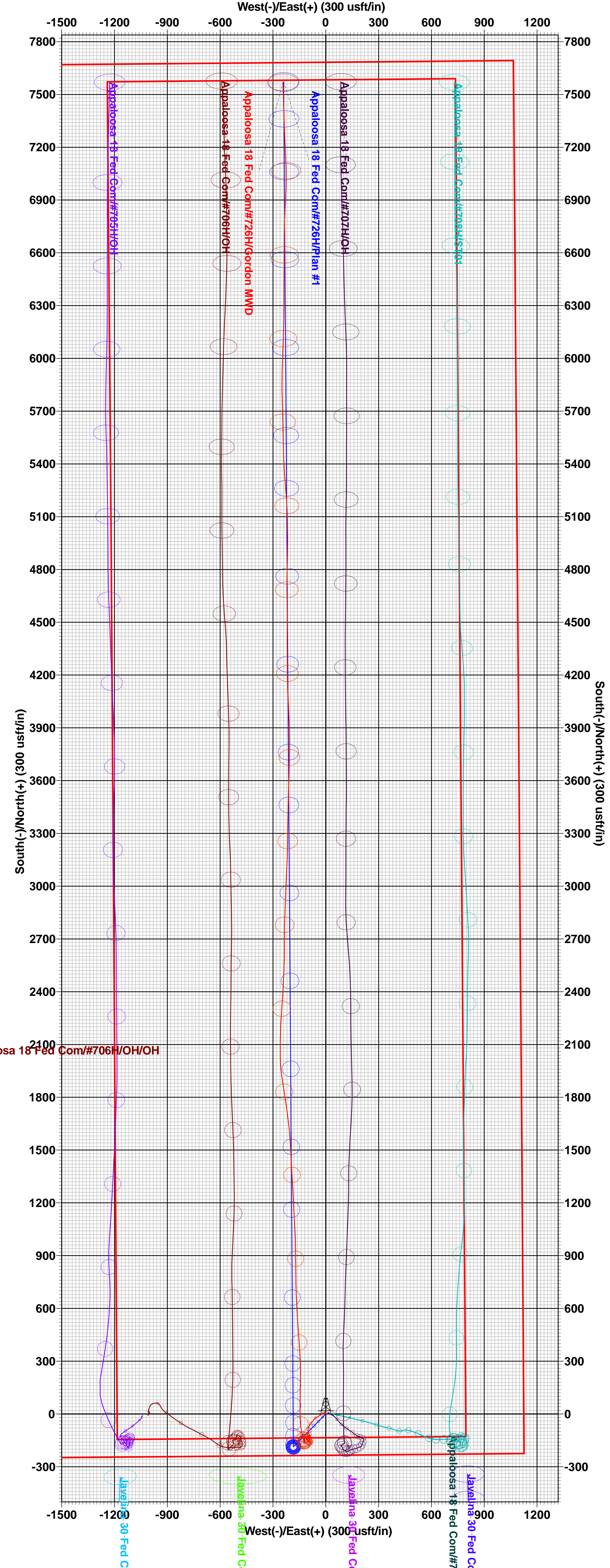
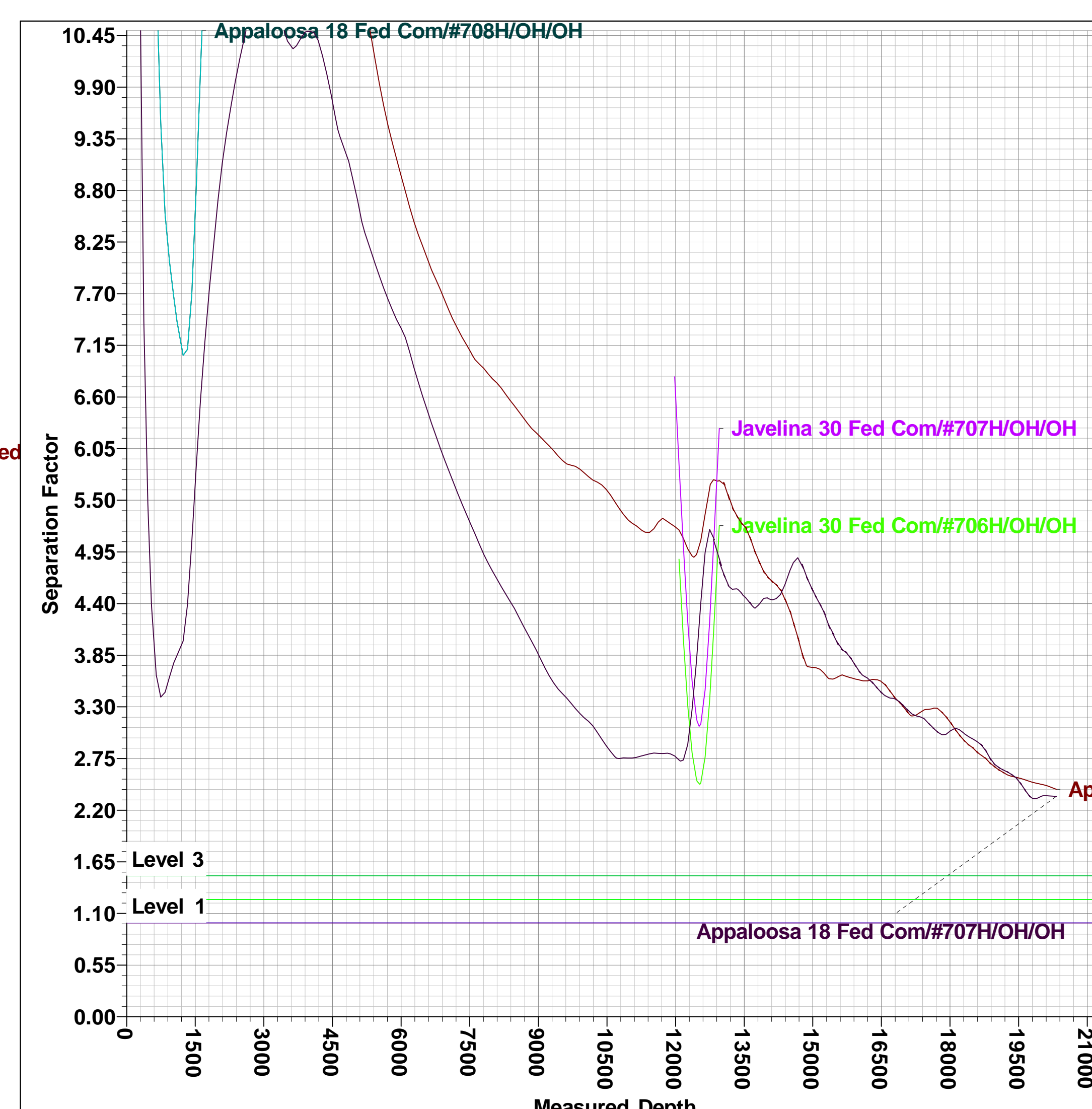
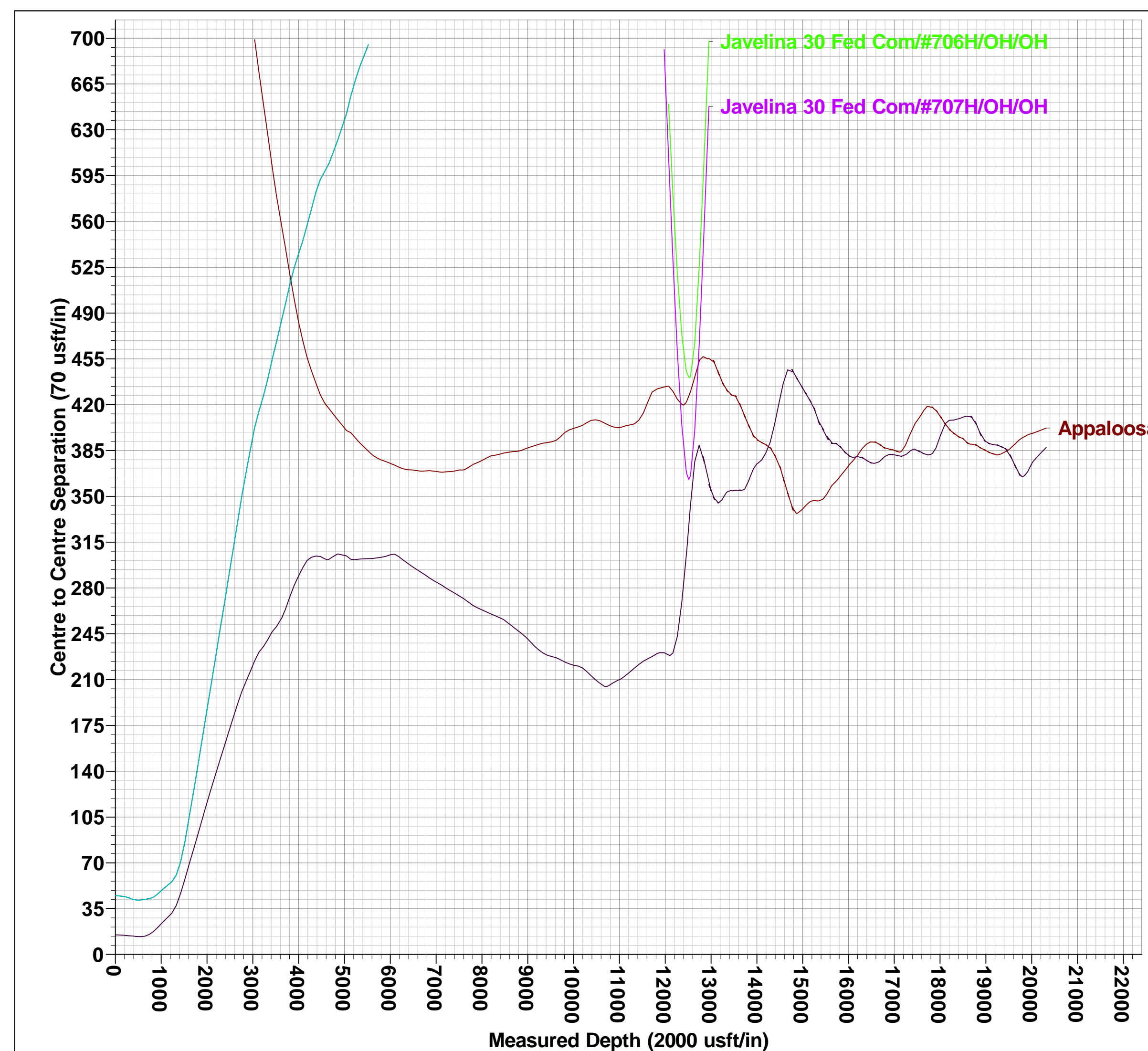
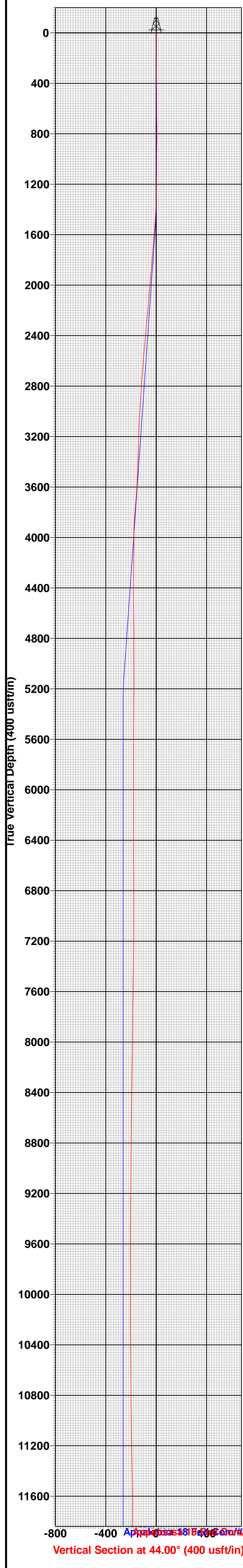
Azimuths to Grid North  
True North: -0.44°  
Magnetic North: 5.94°  
Magnetic Field Strength: 47356.2nT  
Dip Angle: 59.78°  
Date: 7/6/2022  
Model: IGRF2020

To convert a Magnetic Direction to a Grid Direction, Add 5.94°  
To convert a Magnetic Direction to a True Direction, Add 6.38° East  
To convert a True Direction to a Grid Direction, Subtract 0.44°

Lea County, NM (NAD 83 NME)  
Appaloosa 18 Fed Com #726H  
OH

WELL DETAILS: #726H

3340.0  
KB = 26' @ 3366.0usft  
+N/-S 0.0 +E/-W 0.0 Northing 409810.00 Easting 798037.00 Latitude 32° 7' 26.153 N Longitude 103° 30' 14.882 W



Intent  As Drilled

API #									
Operator Name:					Property Name:				Well Number

Kick Off Point (KOP)

UL	Section	Township	Range	Lot	Feet	From N/S	Feet	From E/W	County
Latitude					Longitude				NAD

First Take Point (FTP)

UL	Section	Township	Range	Lot	Feet	From N/S	Feet	From E/W	County
Latitude					Longitude				NAD

Last Take Point (LTP)

UL	Section	Township	Range	Lot	Feet	From N/S	Feet	From E/W	County
Latitude					Longitude				NAD

Is this well the defining well for the Horizontal Spacing Unit?

Is this well an infill well?

If infill is yes please provide API if available, Operator Name and well number for Defining well for Horizontal Spacing Unit.

API #									
Operator Name:					Property Name:				Well Number

KZ 06/29/2018

U.S. Department of the Interior  
BUREAU OF LAND MANAGEMENT

<b>Well Name:</b> APPALOOSA 18 FED COM	<b>Well Location:</b> T25S / R34E / SEC 18 / SESE /	<b>County or Parish/State:</b> /
<b>Well Number:</b> 726H	<b>Type of Well:</b> OIL WELL	<b>Allottee or Tribe Name:</b>
<b>Lease Number:</b> NMNM24490	<b>Unit or CA Name:</b>	<b>Unit or CA Number:</b>
<b>US Well Number:</b> 3002549846	<b>Well Status:</b> Producing Oil Well	<b>Operator:</b> EOG RESOURCES INCORPORATED

**Notification**

**Sundry ID:** 2704128

**Type of Submission:** Notification      **Type of Action:** First Production

**Date Sundry Submitted:** Nov 21, 2022      **Time Sundry Submitted:** 2:57:12 PM

**First Production Date:** Nov 3, 2022

Wellbore Code	Completion Code
00	X1

**US Well Number:** 3002549846

**First Production Remarks:** 8/25/2022 RIG RELEASED  
8/28/2022 MIRU TEST VOID TO 5000 PSI, SEALS AND FLANGES TO 8500 PSI  
9/22/2022 BEGIN PERF AND FRAC  
10/6/2022 FINISH 33 STAGES PERF & FRAC, 12,875'- 20,294' W/ 3 1/8" 1962 SHOTS, FRAC 17,902,330 LBS PROPPANT + 330,916 BBLS LOAD FLUID  
10/11/2022 DRILLED OUT PLUGS AND CLEAN OUT WELLBORE  
11/3/2022 OPENED WELL TO FLOWBACK – DATE OF FIRST PRODUCTION

**Disposition:** Accepted

**Accepted Date:** 12/15/2022

Submit To Appropriate District Office Two Copies District I 1625 N. French Dr., Hobbs, NM 88240 District II 811 S. First St., Artesia, NM 88210 District III 1000 Rio Brazos Rd., Aztec, NM 87410 District IV 1220 S. St. Francis Dr., Santa Fe, NM 87505	State of New Mexico Energy, Minerals and Natural Resources  Oil Conservation Division 1220 South St. Francis Dr. Santa Fe, NM 87505	Form C-105 Revised August 1, 2011
		1. WELL API NO. <b>30-025-49846</b>
		2. Type of Lease <input type="checkbox"/> STATE <input type="checkbox"/> FEE <input checked="" type="checkbox"/> FED/INDIAN
		3. State Oil & Gas Lease No. NMNM24490

**WELL COMPLETION OR RECOMPLETION REPORT AND LOG**

4. Reason for filing: <input checked="" type="checkbox"/> <b>COMPLETION REPORT</b> (Fill in boxes #1 through #31 for State and Fee wells only)  <input type="checkbox"/> <b>C-144 CLOSURE ATTACHMENT</b> (Fill in boxes #1 through #9, #15 Date Rig Released and #32 and/or #33; attach this and the plat to the C-144 closure report in accordance with 19.15.17.13.K NMAC)	5. Lease Name or Unit Agreement Name <b>APPALOOSA 18 FED COM</b>  6. Well Number: <b>726H</b>
---	---

7. Type of Completion:  
 NEW WELL     WORKOVER     DEEPENING     PLUGBACK     DIFFERENT RESERVOIR     OTHER \_\_\_\_\_

8. Name of Operator <b>EOG RESOURCES INC</b>	9. OGRID <b>7377</b>
---	-------------------------

10. Address of Operator <b>PO BOX 2267 MIDLAND, TEXAS 79702</b>	11. Pool name or Wildcat <b>Bobcat Draw; Upper Wolfcamp</b>
--	--

12. Location	Unit Ltr	Section	Township	Range	Lot	Feet from the	N/S Line	Feet from the	E/W Line	County
<b>Surface:</b>	P	18	25S	34E		235'	SOUTH	1125'	EAST	LEA
<b>BH:</b>	J	7	25S	34E		2527'	SOUTH	1310'	EAST	LEA

13. Date Spudded <b>6/23/2022</b>	14. Date T.D. Reached <b>8/22/2022</b>	15. Date Rig Released <b>8/25/2022</b>	16. Date Completed (Ready to Produce) <b>11/3/2022</b>	17. Elevations (DF and RKB, RT, GR, etc.) <b>3340' GL</b>
18. Total Measured Depth of Well MD 20,320'    TVD 12,676'	19. Plug Back Measured Depth MD 20,294'    TVD 12,676'	20. Was Directional Survey Made? <b>YES</b>	21. Type Electric and Other Logs Run <b>None</b>	

22. Producing Interval(s), of this completion - Top, Bottom, Name  
**WOLFCAMP - 12,875'-20,294'**

**23. CASING RECORD (Report all strings set in well)**

CASING SIZE	WEIGHT LB./FT.	DEPTH SET	HOLE SIZE	CEMENTING RECORD	AMOUNT PULLED
9 5/8"	40# J-55	1150'	12 1/4"	470 CL C/CIRC	
7 5/8"	29.7# HCP-110	11,869'	8 3/4"	440 H/CIRC 1280 SXS CL C/CIRC	
5 1/2"	20# ECP-110	20,303'	6 3/4"	770 CL H/CIRC	

24. LINER RECORD				25. TUBING RECORD			
SIZE	TOP	BOTTOM	SACKS CEMENT	SCREEN	SIZE	DEPTH SET	PACKER SET

26. Perforation record (interval, size, and number)  <b>12,875' - 20,294'    3 1/8", 1962holes</b>	27. ACID, SHOT, FRACTURE, CEMENT, SQUEEZE, ETC. DEPTH INTERVAL    AMOUNT AND KIND MATERIAL USED <b>12,875'-20,294'    FRAC W/17,902,330 lbs proppant, 330,916 bbls load fld</b>
--	---

**28. PRODUCTION**

Date First Production <b>11/3/2022</b>		Production Method ( <i>Flowing, gas lift, pumping - Size and type pump</i> ) <b>Flowing</b>			Well Status ( <i>Prod. or Shut-in</i> ) <b>Producing</b>		
Date of Test <b>11/5/2022</b>	Hours Tested <b>24</b>	Choke Size <b>52</b>	Prod'n For Test Period	Oil - Bbl <b>2745</b>	Gas - MCF <b>4809</b>	Water - Bbl. <b>7076</b>	Gas - Oil Ratio <b>1752</b>
Flow Tubing Press.	Casing Pressure <b>1830</b>	Calculated 24-Hour Rate	Oil - Bbl.	Gas - MCF	Water - Bbl.	Oil Gravity - API - ( <i>Corr.</i> ) <b>43.3</b>	

29. Disposition of Gas ( <i>Sold, used for fuel, vented, etc.</i> ) <b>SOLD</b>	30. Test Witnessed By
--	-----------------------

31. List Attachments  
**C-102, C-104, C-103, Directional Survey, H spacing, Gas capture**

32. If a temporary pit was used at the well, attach a plat with the location of the temporary pit.

33. If an on-site burial was used at the well, report the exact location of the on-site burial:

Latitude \_\_\_\_\_ Longitude \_\_\_\_\_ NAD 1927 1983

*I hereby certify that the information shown on both sides of this form is true and complete to the best of my knowledge and belief*

Signature *Kristina Agee*    Printed Name **Kristina Agee**    Title **REGULATORY SPECIALIST**    Date **1/5/2023**

E-mail Address **kristina\_agee@eogresources.com**

# INSTRUCTIONS

This form is to be filed with the appropriate District Office of the Division not later than 20 days after the completion of any newly-drilled or deepened well and not later than 60 days after completion of closure. When submitted as a completion report, this shall be accompanied by one copy of all electrical and radio-activity logs run on the well and a summary of all special tests conducted, including drill stem tests. All depths reported shall be measured depths. In the case of directionally drilled wells, true vertical depths shall also be reported. For multiple completions, items 11, 12 and 26-31 shall be reported for each zone.

## INDICATE FORMATION TOPS IN CONFORMANCE WITH GEOGRAPHICAL SECTION OF STATE

Southeastern New Mexico		Northwestern New Mexico	
T. Anhy <u>Rustler</u> 1,042'	T. Canyon <u>Brushy</u> 7817'	T. Ojo Alamo	T. Penn A"
T. Salt 1406'	T. Strawn	T. Kirtland	T. Penn. "B"
B. Salt	T. Atoka	T. Fruitland	T. Penn. "C"
T. Yates	T. Miss	T. Pictured Cliffs	T. Penn. "D"
T. 7 Rivers	T. Devonian	T. Cliff House	T. Leadville
T. Queen	T. Silurian	T. Menefee	T. Madison
T. Grayburg	T. Montoya	T. Point Lookout	T. Elbert
T. San Andres	T. Simpson	T. Mancos	T. McCracken
T. Glorieta	T. McKee	T. Gallup	T. Ignacio Otzte
T. Paddock	T. Ellenburger	Base Greenhorn	T. Granite
T. Blinebry	T. Gr. Wash	T. Dakota	
T. Tubb	T. Delaware Sand	T. Morrison	
T. Drinkard	T. Bone Springs	T. Todilto	
T. Abo	T. 1st BS Sand 10,304'	T. Entrada	
T. Wolfcamp 12,397'	T. 2nd BS Sand 11946'	T. Wingate	
T. Penn	T.	T. Chinle	
T. Cisco (Bough C)	T.	T. Permian	

### OIL OR GAS SANDS OR ZONES

No. 1, from.....to.....  
 No. 2, from.....to.....  
 No. 3, from.....to.....  
 No. 4, from.....to.....

### IMPORTANT WATER SANDS

Include data on rate of water inflow and elevation to which water rose in hole.

No. 1, from.....to.....feet.....  
 No. 2, from.....to.....feet.....  
 No. 3, from.....to.....feet.....

## LITHOLOGY RECORD (Attach additional sheet if necessary)

From	To	Thickness In Feet	Lithology	From	To	Thickness In Feet	Lithology

U.S. Department of the Interior  
BUREAU OF LAND MANAGEMENT

<b>Well Name:</b> APPALOOSA 18 FED COM	<b>Well Location:</b> T25S / R34E / SEC 18 / SESE /	<b>County or Parish/State:</b> /
<b>Well Number:</b> 726H	<b>Type of Well:</b> OIL WELL	<b>Allottee or Tribe Name:</b>
<b>Lease Number:</b> NMNM24490	<b>Unit or CA Name:</b>	<b>Unit or CA Number:</b>
<b>US Well Number:</b> 3002549846	<b>Well Status:</b> Drilling Well	<b>Operator:</b> EOG RESOURCES INCORPORATED

**Subsequent Report**

**Sundry ID:** 2689580

**Type of Submission:** Subsequent Report

**Type of Action:** Drilling Operations

**Date Sundry Submitted:** 08/29/2022

**Time Sundry Submitted:** 12:45

**Date Operation Actually Began:** 08/19/2022

**Actual Procedure:** BOP/DIVERTERS/ROTATING HEAD-FULL BOP TEST AS PER BLM / EOG SPECS 8-19-2022 8 3/4" HOLE 8-19-2022 Intermediate Hole @ 11,884' MD, 11,875' TVD Casing shoe @ 11,869' MD, 11,860' TVD Ran 7-5/8", 29.7#, HCP-110 MO-FXL Stage 1: Cement w/ 335 sx Class H (1.21 yld, 16.2 ppg), followed by 105 sx Class H (1.11 yld, 16.2 ppg). Test casing to 2,600 psi for 30 min - OK. Did not circ cement to surface, TOC @ 6,700' by Calc Stage 2: Bradenhead squeeze w/ 1,000 sx Class C (1.41 yld, 14.8 ppg) Stage 3: Top out w/ 290 sx Class C (1.36 yld, 14.8 ppg). Circulated (5 bbls) 21 sx to surface, TOC @ 79' by Echometer. 8-18-2022 6 3/4" HOLE 8-18-2022 Production Hole @ 20,320' MD, 12,674' TVD Casing shoe @ 20,303' MD, 12,674' TVD Ran 5.5", 20#, EY HCP-110, RDT-BTX, 0' - 11,733' (MJ @ 12,411' and 19,833') Ran 5.5", 20#, ECP-110, VAM Sprint SF, 11,733' - 12,277' Ran 5.5", 20#, EY HCP-110, RDT-BTX, 12,277' - 20,303' Cement w/ 770 sx Class H (1.23 yld, 14.5 ppg) Did not test casing . Did not circ cement to surface, TOC @ 9,877' by Calc. Waiting on CBL RR 8-19-2022

Well Name: APPALOOSA 18 FED COM

Well Location: T25S / R34E / SEC 18 / SESE /

County or Parish/State: 7

Well Number: 726H

Type of Well: OIL WELL

Allottee or Tribe Name:

Lease Number: NMNM24490

Unit or CA Name:

Unit or CA Number:

US Well Number: 3002549846

Well Status: Drilling Well

Operator: EOG RESOURCES INCORPORATED

**Operator**

I certify that the foregoing is true and correct. Title 18 U.S.C. Section 1001 and Title 43 U.S.C. Section 1212, make it a crime for any person knowingly and willfully to make to any department or agency of the United States any false, fictitious or fraudulent statements or representations as to any matter within its jurisdiction. Electronic submission of Sundry Notices through this system satisfies regulations requiring a

Operator Electronic Signature: EMILY FOLLIS

Signed on: AUG 29, 2022 12:45 PM

Name: EOG RESOURCES INCORPORATED

Title: Sr. Regulatory Administrator

Street Address: 5509 Champions Drive

City: Midland

State: TX

Phone: (432) 848-9163

Email address: emily\_follis@eogresources.com

**Field**

Representative Name:

Street Address:

City:

State:

Zip:

Phone:

Email address:

**BLM Point of Contact**

BLM POC Name: Jonathon W Shepard

BLM POC Title: Petroleum Engineer

BLM POC Phone: 5752345972

BLM POC Email Address: jshepard@blm.gov

Disposition: Accepted

Disposition Date: 09/09/2022

Signature: Jonathon Shepard

Sante Fe Main Office  
Phone: (505) 476-3441

General Information  
Phone: (505) 629-6116

Online Phone Directory  
<https://www.emnrd.nm.gov/ocd/contact-us>

**State of New Mexico**  
**Energy, Minerals and Natural Resources**  
**Oil Conservation Division**  
**1220 S. St Francis Dr.**  
**Santa Fe, NM 87505**

ACKNOWLEDGMENTS

Action 172996

**ACKNOWLEDGMENTS**

Operator: EOG RESOURCES INC 5509 Champions Drive Midland, TX 79706	OGRID: 7377
	Action Number: 172996
	Action Type: [C-104] Completion Packet (C-104C)

**ACKNOWLEDGMENTS**

<input checked="" type="checkbox"/>	I hereby certify that the required Water Use Report has been, or will be, submitted for this wells completion.
<input checked="" type="checkbox"/>	I hereby certify that the required FracFocus disclosure has been, or will be, submitted for this wells completion.

Sante Fe Main Office  
Phone: (505) 476-3441

General Information  
Phone: (505) 629-6116

Online Phone Directory  
<https://www.emnrd.nm.gov/ocd/contact-us>

**State of New Mexico**  
**Energy, Minerals and Natural Resources**  
**Oil Conservation Division**  
**1220 S. St Francis Dr.**  
**Santa Fe, NM 87505**

CONDITIONS

Action 172996

**CONDITIONS**

Operator: EOG RESOURCES INC 5509 Champions Drive Midland, TX 79706	OGRID: 7377
	Action Number: 172996
	Action Type: [C-104] Completion Packet (C-104C)

**CONDITIONS**

Created By	Condition	Condition Date
plmartinez	File 3160-4 Completion Report within 10 days of BLM approval.	4/14/2026