

U.S. Department of the Interior
BUREAU OF LAND MANAGEMENT

Well Name: LITTLEFIELD BO	Well Location: T26S / R29E / SEC 34 / NENW / 32.0049444 / -103.9736147	County or Parish/State: EDDY / NM
Well Number: 4	Type of Well: OIL WELL	Allottee or Tribe Name:
Lease Number: NMLC065928A	Unit or CA Name:	Unit or CA Number:
US Well Number: 3001525622	Operator: WESTERN GLOBAL OIL	

Subsequent Report

Sundry ID: 2905805

Type of Submission: Subsequent Report

Type of Action: Plug and Abandonment

Date Sundry Submitted: 04/13/2026

Time Sundry Submitted: 09:34

Date Operation Actually Began: 10/25/2025

Actual Procedure: NMOCD plugged this well on behalf of Western Global Oil after the well began leaking and the operator was non responsive.

BLM Point of Contact

BLM POC Name: CHRISTOPHER WALLS

BLM POC Title: Petroleum Engineer

BLM POC Phone: 5752342234

BLM POC Email Address: CWALLS@BLM.GOV

Disposition: Accepted

Disposition Date: 04/13/2026

Signature: Chris Walls

Form 3160-5
(June 2019)

UNITED STATES
DEPARTMENT OF THE INTERIOR
BUREAU OF LAND MANAGEMENT

FORM APPROVED OMB
No. 1004-0137 Expires:
December 31, 2024

SUNDRY NOTICES AND REPORTS ON WELLS
**Do not use this form for proposals to drill or to re-enter an
abandoned well. Use Form 3160-3 (APD) for such proposals.**

5. Lease Serial No.
LC-065928A

6. If Indian, Allottee or Tribe Name

SUBMIT IN TRIPLICATE - Other instructions on page 2

1. Type of Well
 Oil Well Gas Well Other

7. If Unit of CA/Agreement, Name and/or No.

8. Well Name and No.
Littlefield BO Federal #004

2. Name of Operator
State of New Mexico formerly Western Global Oil Inc

9. API Well No.
30-015-25622

3a. Address
69730 Highway 111, Ste. 112, Rancho Mirage, CA 92270

3b. Phone No. (include area code)
(805) 470-8504

10. Field and Pool or Exploratory Area
Brushy Draw; Delaware

4. Location of Well (Footage, Sec., T., R., M., or Survey Description)
C-34-26S-29E Lot:7 400' FNL & 2310' FWL

11. Country or Parish, State
Eddy County, NM

12. CHECK THE APPROPRIATE BOX(ES) TO INDICATE NATURE OF NOTICE, REPORT OR OTHER DATA

TYPE OF SUBMISSION	TYPE OF ACTION			
<input checked="" type="checkbox"/> Subsequent Report	<input type="checkbox"/> Acidize	<input type="checkbox"/> Deepen	<input type="checkbox"/> Production (Start/Resume)	<input type="checkbox"/> Water Shut-Off
<input type="checkbox"/> Notice of Intent	<input type="checkbox"/> Alter Casing	<input type="checkbox"/> Hydraulic Fracturing	<input type="checkbox"/> Reclamation	<input type="checkbox"/> Well Integrity
<input type="checkbox"/> Final Abandonment Notice	<input type="checkbox"/> Casing Repair	<input type="checkbox"/> New Construction	<input type="checkbox"/> Recomplete	<input type="checkbox"/> Other
	<input type="checkbox"/> Change Plans	<input checked="" type="checkbox"/> Plug and Abandon	<input type="checkbox"/> Temporarily Abandon	
	<input type="checkbox"/> Convert to Injection	<input type="checkbox"/> Plug Back	<input type="checkbox"/> Water Disposal	

13. Describe Proposed or Completed Operation: Clearly state all pertinent details, including estimated starting date of any proposed work and approximate duration thereof. If the proposal is to deepen directionally or recomplete horizontally, give subsurface locations and measured and true vertical depths of all pertinent markers and zones. Attach the Bond under which the work will be performed or provide the Bond No. on file with BLM/BIA. Required subsequent reports must be filed within 30 days following completion of the involved operations. If the operation results in a multiple completion or recompletion in a new interval, a Form 3160-4 must be filed once testing has been completed. Final Abandonment Notices must be filed only after all requirements, including reclamation, have been completed and the operator has determined that the site is ready for final inspection.)

Please see below for the Subsequent P&A Report.

14. I hereby certify that the foregoing is true and correct. Name (Printed/Typed) Kelton Woodard (JMR Services, LLC)	Title Plugging Agent
Signature <i>Kelton Woodard</i>	Date 01/11/2026

THE SPACE FOR FEDERAL OR STATE OFFICE USE

Approved by	Title	Date
Conditions of approval, if any, are attached. Approval of this notice does not warrant or certify that the applicant holds legal or equitable title to those rights in the subject lease which would entitle the applicant to conduct operations thereon.	Office	

Title 18 U.S.C Section 1001 and Title 43 U.S.C Section 1212, make it a crime for any person knowingly and willfully to make to any department or agency of the United States any false, fictitious or fraudulent statements or representations as to any matter within its jurisdiction.

(Instructions on page 2)

Subsequent P&A Report
State of New Mexico formerly Western Global Oil Inc
Littlefield BO Federal – 004
30-015-25622

10/25/25 MIRU.

10/26/25 Third Party: Standby and monitor flow. Flow back personnel taking records of pressure readings and reporting back to OCD.

10/27/25 Check Pressures on Well: Tubing 90 psi, Casing 350 psi, Surface 0 psi, monitored pressure psi. Waited on kill mud, monitored pressures. Pressure increased to 550 on tubing, 450 on casing. Pumping Operations: Pumped 60 bbls of 11.5 kill mud down casing, 25 bbls down tubing, well on vacuum.

10/28/25 Check Pressures on Well: Tubing 0 psi, Casing 0 psi, Surface 0 psi. Reclamation: Unload backhoe, clean out location, spread caliche on wet surface, load backhoe.

10/29/25 Check Pressures on Well: Tubing 0 psi, Casing 0 psi, Surface 0 psi. Spoke with (Loren Diede) approved to : Pump 60 bbls 10 ppg brine down casing and 25 down tubing. Pumping Operations: Pumped 35 bbls of 10 ppg brine water down casing, pressure increased to 280 psi and tubing increased to 100 psi. Pumping Operations: Monitored pressures for 30 minutes, pressure at 280 psi on casing, 100 psi on tubing. Pumping Operations: Pumped 60 bbls of 11.5 ppg kill mud down casing, 25 bbls of 11.5 ppg kill mud down tubing. SIP 240 psi on casing, 140 psi on tubing. Secure well and install night caps, equipment shutdown.

10/30/25 Check Pressures on Well: Tubing 150 psi, Casing 250 psi, Surface 0 psi. Pumping Operations: Open well to flow back tank for 20 minutes, flow back around 200 bbls. SIP 750 psi on casing, 150 psi on tubing

10/31/25 Pumping Operations: Flow back well and monitored pressures, casing @ 290 psi and tubing at 20 psi all the way open. Shutdown: Secure well, SIP @ 660 psi on tubing and casing.

11/06/25 Check Pressures on Well: Tubing 790 psi, Casing 790 psi, Surface 0 psi. EIR of .5 bbl/min @ 800 psi, pumped 60 bbls of 13.2 ppg kill mud down casing, casing on vacuum, attempt to pump down tubing, pressure up to 800 psi, bled off pressure. Pumping Operations: Water flow on tubing, attempt to pump down tubing, pressure up to 1000 psi, pumped additional 60 bbls of 13.2 ppg kill mud down casing. Shut in well. SIP 0 psi on casing, 30 psi on tubing. Pumping Operations: Monitored pressures for 20 minutes, pressure increased to 80 psi on casing and tubing, pumped 105 bbls of 13.2 ppg kill mud down casing, SIP 0 psi on casing, 400 psi on tubing. Shutdown: Secure well, will monitor well over night.

11/07/25 Check Pressures on Well: Tubing 400 psi, Casing 0 psi, Surface 0 psi. Pumping Operations: Flow back tubing and pumped 120 bbls of 13.2 ppg kill mud down casing at the same time, pressure on tubing bled off. RIH w/ 4.5 CIBP and set @ 4811'. Secure well and install night caps, equipment shutdown.

11/08/25 Check Pressures on Well: Tubing N/A psi, Casing 0 psi, Surface 0 psi. RIH and tagged CIBP @ 4811'. Pumping Operations: Pumped 80 bbls of 10 ppg brine water, no circulation. SIP 750 psi. Pumping Operations: Pumped 30 bbls of 13.2 ppg kill mud down tubing, tubing on vacuum. Run in the hole with (4 1/2) packer and set at (2500'). Pumping Operations: Isolate holes in casing, holes @ from 4650' to 4811'. Shutdown for the weekend.

11/10/25 Plug (# 1) Spot (15 sxs) class (C neat) cement From (4584') to (4811'). Tubing Operations: Started pulling tubing out of hole, water flow on tubing, stood back 7 stands, water flow increased and pushed cement out of hole. Secure well with 650 psi on tubing. Pumping Operations: Pumped 55 bbls of 13.2 ppg kill mud down tubing, tubing on vacuum

11/11/25 RIH w/ retainer and set @ 4600'. Pumping Operations: Load and test 4 1/2 casing from 4600' to surface, held 500 psi, bled off pressure. Plug (# 2) Squeezed (20sxs) class (C) cement from (4811') to (4600'). Secure well and install night caps, equipment shutdown.

11/12/25 Ran in the hole with Cement Bond log from (4600') to (Surface). Plug (# 3) Spot (60 sx sxs) class (C) cement From (3692') to (4600').

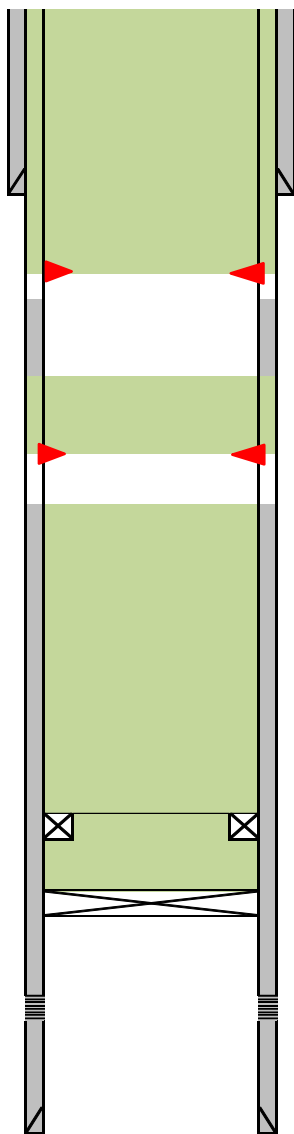
11/13/25 RIH and tagged TOC @ 3900'. Plug (# 4) Spot (80 sxs) class (C) cement From (2717') to (3900'). RIH and tagged TOC @ 2730'. RIH w/ 4.5 packer and set @ 1645'. RIH and perf'd @ 2250'. EIR 2 bbls/min @ 200 psi. Plug (# 5) Squeezed (55sxs) class (C) cement from (2250') to (2050'). Secure well and install night caps, equipment shutdown.

11/14/25 Check Pressures on Well: Tubing 0 psi, Casing 0 psi, Surface 0 psi. Tubing Operations: Pressure tested cement plug, held 500 psi, bled off pressure, released Packer, laid down all tubing. Tagged TOC @ 1990'. RIH and perf'd @ 422'. EIR 2 bbls/min @ 100 psi. Plug (# 6) Squeezed (240sxs) class (C) cement from (422') to (Surface) . RDMO.

Author:	Shyanne @ JMR	Well No.	004
Well Name	Littlefiled BO Federal	API #:	30-015-25622
Field/Pool	Brushy Draw; Delaware	Location:	400' FNL & 2310' FEL
County	Eddy		Sec 34, T26S, R29E
State	NM	GL:	2870'
Spud Date	1/6/1987		

Description	O.D.	Grade	Weight	Depth	Hole	Cmt Sx
Surface Csg	9 5/8		36#	372'	12 1/4	200
Prod Csg	4 1/2		10.5#	5216'	7 7/8	650

Formation Tops	
Anhy	2200'
Lamar	2860'
Delaware Snd	2910'
Bell Canyon	3820'
Cherry Canyon	4810'
Brushy Draw	5180'



Plug (# 6) Squeezed (240sxs) class (C) cement from (422') to (Surface).
Perf'd @ 422'.

Tagged TOC @ 1990'.

Plug (# 5) Squeezed (55sxs) class (C) cement from (2250') to (2050').
Perf'd @ 2250'.

Tagged TOC @ 2730'.

Plug (# 4) Spot (80 sxs) class (C) cement From (2717') to (3900').

Tagged TOC @ 3900'.

Plug (# 3) Spot (60 sx sxs) class (C) cement From (3692') to (4600').

Set CICR @ 4600'

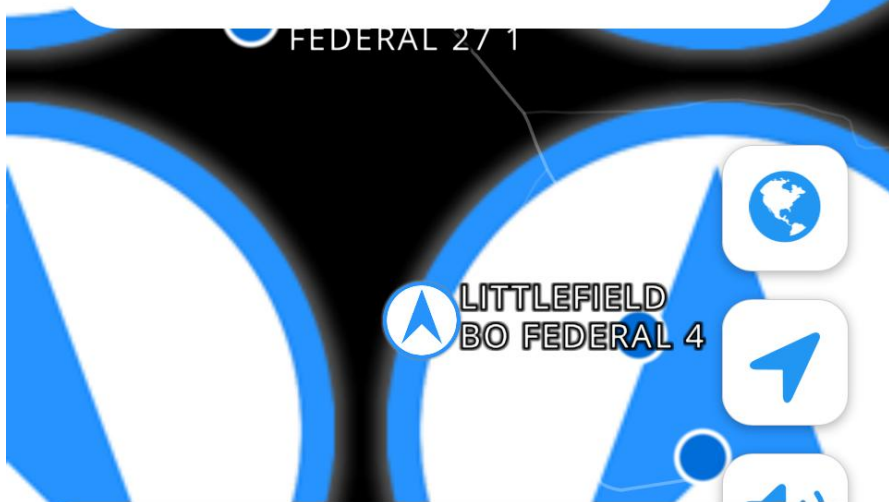
Plug (# 2) Squeezed (20sxs) class (C) cement from (4811') to (4600').

Set and tagged CIBP @ 4811'.

Perfs from 4922' to 4861'.



Search



**LITTLEFIELD BO FEDERAL
4**

WESTERN GLOBAL OIL DBA WESTERN
GLOBAL OIL INC
EDDY COUNTY, NM
26S-29E-34-LOT 7
30-015-25622
32.004923,-103.973644



DIRECTIONS



SHARE



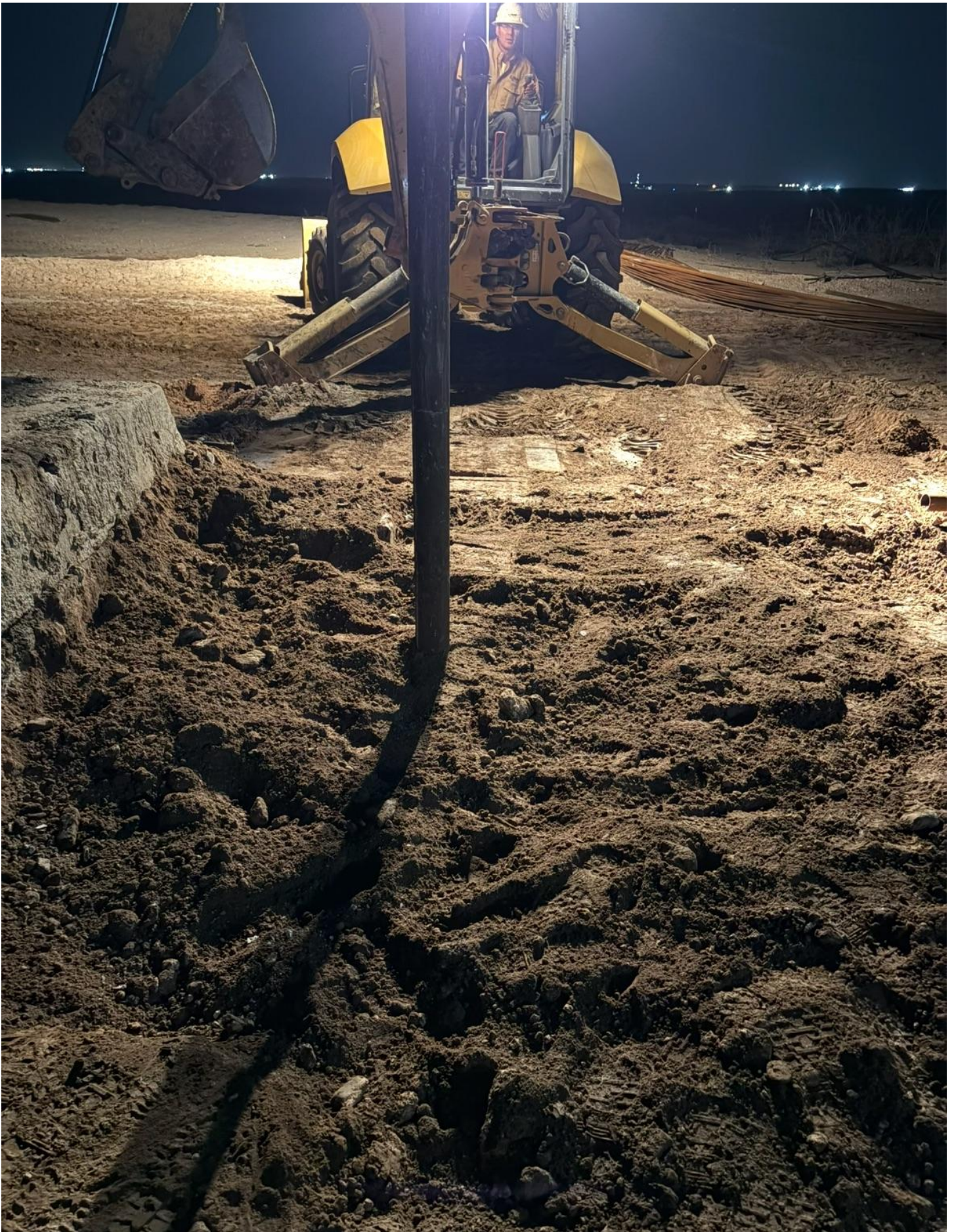
UNSAVE













Sante Fe Main Office
Phone: (505) 476-3441

General Information
Phone: (505) 629-6116

Online Phone Directory
<https://www.emnrd.nm.gov/ocd/contact-us>

State of New Mexico
Energy, Minerals and Natural Resources
Oil Conservation Division
1220 S. St Francis Dr.
Santa Fe, NM 87505

DEFINITIONS

Action 575746

DEFINITIONS

Operator: JMR SERVICES, LLC (OPG Vendor) 4706 Green Tree Blvd. Midland, TX 79707	OGRID: 333576
	Action Number: 575746
	Action Type: [UF-OMA] Sub. Plugging (UF-OMA-C-103P)

DEFINITIONS

The OCD Mitigation Activity (OMA) forms are a subset of the OCD's forms exclusively designed for activities related to State of New Mexico's contracted evaluation, plugging, decommissioning, remediation, salvage and reclamation activities. Specifically, these forms are typically used where the OCD has acquired a hearing order allowing the OCD to perform mitigation activities on wells and associated facilities that no longer have an authorized or viable operator to perform the necessary work. These forms are not to be utilized for any other purpose.

Sante Fe Main Office
Phone: (505) 476-3441

General Information
Phone: (505) 629-6116

Online Phone Directory
<https://www.emnrd.nm.gov/ocd/contact-us>

State of New Mexico
Energy, Minerals and Natural Resources
Oil Conservation Division
1220 S. St Francis Dr.
Santa Fe, NM 87505

QUESTIONS

Action 575746

QUESTIONS

Operator: JMR SERVICES, LLC (OPG Vendor) 4706 Green Tree Blvd. Midland, TX 79707	OGRID: 333576
	Action Number: 575746
	Action Type: [UF-OMA] Sub. Plugging (UF-OMA-C-103P)

QUESTIONS

Prerequisites	
[OGRID] Well Operator	[328677] Western Global Oil dba Western Global Oil Inc
[API] Well Name and Number	[30-015-25622] LITTLEFIELD BO FEDERAL #004
Well Status	Plugged (site released)

Sante Fe Main Office
Phone: (505) 476-3441

General Information
Phone: (505) 629-6116

Online Phone Directory
<https://www.emnrd.nm.gov/ocd/contact-us>

State of New Mexico
Energy, Minerals and Natural Resources
Oil Conservation Division
1220 S. St Francis Dr.
Santa Fe, NM 87505

CONDITIONS

Action 575746

CONDITIONS

Operator: JMR SERVICES, LLC (OPG Vendor) 4706 Green Tree Blvd. Midland, TX 79707	OGRID: 333576
	Action Number: 575746
	Action Type: [UF-OMA] Sub. Plugging (UF-OMA-C-103P)

CONDITIONS

Created By	Condition	Condition Date
loren.diede	None	4/15/2026