

District I - (575) 393-6161  
1625 N. French Dr., Hobbs, NM 88240  
District II - (575) 748-1283  
811 S. First St., Artesia, NM 88210  
District III - (505) 334-6178  
1000 Rio Brazos Rd., Aztec, NM 87410  
District IV - (505) 476-3460  
1220 S. St. Francis Dr., Santa Fe, NM  
87505

OIL CONSERVATION DIVISION  
1220 South St. Francis Dr.  
Santa Fe, NM 87505

WELL API NO. <b>30-025-20931</b>
5. Indicate Type of Lease STATE <input checked="" type="checkbox"/> FEE <input type="checkbox"/>
6. State Oil & Gas Lease No. <b>027317</b>
7. Lease Name or Unit Agreement Name <b>HH Harris</b>
8. Well Number <b>#002</b>
9. OGRID Number <b>164557</b>
10. Pool name or Wildcat <b>Wolfcamp, Bronco</b>

**SUNDRY NOTICES AND REPORTS ON WELLS**  
(DO NOT USE THIS FORM FOR PROPOSALS TO DRILL OR TO DEEPEN OR PLUG BACK TO A DIFFERENT RESERVOIR. USE "APPLICATION FOR PERMIT" (FORM C-101) FOR SUCH PROPOSALS.)

1. Type of Well: Oil Well  Gas Well  Other

2. Name of Operator  
**Scorpion Oil & Gas, LLC**

3. Address of Operator  
**4779 South Main Street, Stafford, TX 77477**

4. Well Location  
Unit Letter **O** : **650** feet from the **S** line and **1800** feet from the **E** line  
Section **35** Township **12S** Range **38E** NMPM County **Lea**

11. Elevation (Show whether DR, RKB, RT, GR, etc.)  
**3788' GL**

12. Check Appropriate Box to Indicate Nature of Notice, Report or Other Data

<b>NOTICE OF INTENTION TO:</b>		<b>SUBSEQUENT REPORT OF:</b>	
PERFORM REMEDIAL WORK <input type="checkbox"/>	PLUG AND ABANDON <input checked="" type="checkbox"/>	REMEDIAL WORK <input type="checkbox"/>	ALTERING CASING <input type="checkbox"/>
TEMPORARILY ABANDON <input type="checkbox"/>	CHANGE PLANS <input type="checkbox"/>	COMMENCE DRILLING OPNS. <input type="checkbox"/>	P AND A <input type="checkbox"/>
PULL OR ALTER CASING <input type="checkbox"/>	MULTIPLE COMPL <input type="checkbox"/>	CASING/CEMENT JOB <input type="checkbox"/>	
DOWNHOLE COMMINGLE <input type="checkbox"/>			
CLOSED-LOOP SYSTEM <input type="checkbox"/>			
OTHER: <input type="checkbox"/>		OTHER: <input type="checkbox"/>	

13. Describe proposed or completed operations. (Clearly state all pertinent details, and give pertinent dates, including estimated date of starting any proposed work). SEE RULE 19.15.7.14 NMAC. For Multiple Completions: Attach wellbore diagram of proposed completion or recompletion.

**JMR Services, LLC plugged the above well on April 17, 2026 per the attached subsequent report on behalf of Scorpion Oil & Gas, LLC / NMOCD**

Spud Date:

Rig Release Date:

I hereby certify that the information above is true and complete to the best of my knowledge and belief.

SIGNATURE *Mike Lamb* TITLE *Regulatory* DATE *4/29/26*

Type or print name \_\_\_\_\_ E-mail address: \_\_\_\_\_ PHONE: \_\_\_\_\_

APPROVED BY: \_\_\_\_\_ TITLE \_\_\_\_\_ DATE \_\_\_\_\_  
Conditions of Approval (if any): \_\_\_\_\_

**As Plugged Report**  
**Scorpion Oil & Gas, LLC/NMOCD**  
**HH Harris #002**  
**30-025-20931**

2/23/26 MOL and spot equipment.

2/25/26 Clean location with backhoe and test anchors. Waiting on bond.

2/27/26 RU rig and equipment. Unhang horse head.

2/28/26 Check well pressures: 2-3/8" tubing 0#, 2-7/8" tubing 25#, 3-1/2" tubing 175#; 8-5/8" valve seized. TOH and LD 116 7/8" rods, 268 3/4" rods and rod pump. SDFD.

3/2/26 Check well pressures: 2-3/8" tubing 0#, 2-7/8" tubing 25#, 3-1/2" tubing 175#. Kill well with 15 bbls down 3.5". RU wireline. Attempt to run 2-7/8" gauge ring; couldn't get in hole. RU 1.7" sinker bar; RIH to 8924'; TOH. SDFD.

3/3/26 Check well pressures: none. RU to 2-3/8" tubing and pumped 47 bbls brine; started communicating out 2-7/8" tubing; small trickle out casing. Well started flowing oil and gas; killed well with 38 bbls down 2-7/8" tubing. tubing. SDFD.

3/4/26 Open up well; no pressure. Tally and RIH 1.9" tubing; tagged @ 8939' with 286 jts. WOO from L. Diede, NMOCD. RU pump to 1.9" tubing and started to clean out well. Broke circulation out the 2-7/8" tubing with 29 bbls. Circulated 50 bbls total. SDFD.

3/5/26 Open up well; no pressure. Pump 50 bbls fresh water down 1.9" tubing to clean up tubing. Flow started coming out cellar; wait on vacuum truck. Repair bad bull plug. Circulated 45 bbls out 2-7/8" tubing. Hook up to 8-5/8" casing and kill well with 30 bbls brine water. LD tubing to 3445'. SDFD.

3/6/26 Check well pressures: 8-5/8" casing 60# and 13-3/8" casing 40#. Finish TOH with 1.9" tubing. RU wireline. Run CBL. Found top of cement at 4637'. RD. RU wireline and round trip 1.9" gauge to 8900'. RIH with RBP; couldn't get through 3151'. Unable to POH. Set RBP @ 31234'. POH and RD. SDFD.

3/7/26 Open up well and bleed off 10# pressure on 8-5/8". P/T tubing to 500#;ok. RU wireline and attempt to retrieve RBP. Pull out of rope socket. SDFD.

3/9/26 Open up well; no pressure. RU rod strip and tongs. PU bull latch and 123 rods; RIH. Latch on to rope socket. Jarred RBP free; well went on a vacuum. POH with rods and LD RBP. SDFD.

3/10/26 Open up well; no pressure. RU JMR wireline. Run 3 stages of perforations inside 2-7/8" casing at 8500', 8495', 8490'. 6 shot 60 phase -1 11/16" deep pen. POH and RD. RIH with 77 jts 1.9" tubing inside 2-7/8" tubing. SD due to high winds.

3/11/26 Open up well; blow down 35# 2-3/8" tubing. SD due to high winds.

3/12/26 Open up well; blow down 35# 2-3/8" tubing. PU 1.9" tubing to 8500'. Circulate well through 3.5" casing with 26 bbls. Continued pumping 69 bbls; no circulation on other strings. WOO L. Diede, NMOCD. Requested to perforate inside 2-3/8" tubing @ 8500'. RU wireline. Perforate inside 2-3/8" @ 8500'. RIH with 10 jts 1.9" tubing. RU pump and broke circulation through 2-3/8" tubing with total 110 bbls; good circulation on 2-3/8", 3.5" and 2-7/8" strings. SDFD.

3/13/26 Open up well; no pressure.

Plug #1: Spot 15 sxs Class H cement inside casing from 8500' to 8137'. PUH to 5808'. Hooked up pump to tubing due to tubing standing full. Pressured up to 1000psi. LD 190 jts to 2560'. TOH and LD cement tubings. RU pump and pump down 2-7/8" string and circulate out remaining strings with gas out 8-5/8" casing. L.Diede NMOCD requested to pump marker down 2-3/8" string. Pump down and establish returns out 2-7/8" string with 15bbls salt gel marker; got back at 108 bbls pumped. SDFD.

3/14/26 Open up well; casing on a vacuum and surface trickling. L. Diede approved to RIH with wireline and tag cement. RU JMR wireline and RIH; tag @ 1476' in 2-7/8" and 9684' in 2-3/8". Pump to capacity in 2-7/8" tubing; all strings on vacuum. RIH with 1.9" tubing; tag at 8639'. PUH to 8500'. SDFD.

3/16/26 Open well; no pressure. L. Diede ordered to pump 200 sxs Class H cement down 2-3/8" tubing to 4300'. LD tubing to 4122'. TOH with tubing. Establish circulation down 2-3/8" tubing with 60 bbls out 3.5" casing. SI 3.5" casing and pumped total 90 bbls with circulation out 2-7/8". SDFD.

3/17/26 Open up well; on a vacuum with slight trickle out surface.

Plug #2: Spot 200 sxs Class H cement inside 2-3/8" tubing to 4300'. WOC. RIH with weight bar and tagged TOC @ 7400' inside 2-7/8" and @ 5543' inside 2-3/8". RU to 2-3/8" tubing and PT. to 500#; good. Unable to test 2-7/8" due to leak on WH flange. SDFD.

3/18/26 Check well pressures: 2-3/8" 350psi. Bleed down. L. Diede, NMOCD said to run in 1.9" to 7400' and spot 60 sxs Class H cement. RIH with tubing; did not tag @ 8500'. SDFD.

3/19/26 Check well pressures: 2-3/8" 60psi. Bleed down. L. Diede, NMOCD said to drop down to 8500' and attempt to circulate. RU pump and broke circulation out tubing and casing with 30bbbls. L. Diede, NMOCD said to spot 30 sxs @ 8519'. Plug #3: Spot 30 sxs Class H cement from 8500' to 7403'. Displaced with 18.5 bbbls. Pump locked at end up displacement and pressured up to 2000psi. Found tubing stuck. Unable to work free. SDFD.

3/20/26 Open up well; no pressure. RU wireline. RIH with GR to 6900'. RU FreePoint. Found pipe free at 6435'. RIH with tubing cutter and cut at 6435'. POIH with 205 jts and 12' piece. SDFD.

3/21/26 Open well; no pressure. P/T 2-3/8" tubing to 500#; good test. Attempt to P/T 2-7/8" tubing; failed. Broke circulation out 8-5/8" casing and 3.5" casings. R/T gauge ring to 6435'. L. Diede, NMOCD ordered to Perf in 2 stages of perfs at 6435' (6 shots each with 60 degree phase). RU wireline. RIH and perforated per orders at 6435'. RIH and perforated in 2-7/8" tubing @ 4300' and 2-3/8" tubing at 4300'. RU pump to 2-3/8" tubing and broke circulation out 2-7/8" string and 3.5" and 8-5/8" casings. Plug #4: Squeezed 110 sxs Class H cement from 4300' to 4100'. SI pressure at 675psi. SDFD.

3/23/26 Open up well; no pressure but slight trickle out surface. RU wireline and tag cement in 2-7/8" at 4128' and inside 2-3/8" at 3543'. P/T tubings to 500psi; good. 8-5/8" tested if 3.5" casing is closed. L. Diede, NMOCD ordered to perf inside 2-7/8" @ 4128'. RU wireline. Perforated @ 4128'. Pressured up; no circulation. L. Diede, NMOCD ordered to perf in 50' increments until circulation established. Perforate @ 4078' and 4028'; no circulation. L. Diede, NMOCD ordered CBL. SDFD.

3/24/26 Open up well; no pressures. RU wireline. Ran CBL. Found cement @ 3880' inside 2-7/8". L. Diede, NMOCD ordered to perforate @ 3850' and squeeze 95 sxs Class C behind 8-5/8". Perforate @ 3880'. Plug #5: Squeeze 95 sxs Class C cement from 3880' to 3500'. WOC. RIH and tag TOC @ 3341'. SDFD.

3/25/26 Open up well; no pressure but slight trickle at surface. L. Diede, NMOCD ordered to verify cement. RIH and tagged cement inside 2-3/8" tubing @ 3543' and 2-7/8" tubing @ 3341'. L. Diede, NMOCD ordered to cut 2-7/8" and 2-3/8" tubing and 3.5" casing. Attempt to LD all strings. RIH and cut 2-7/8" tubing @ 3300'. RD 2-7/8" WH assembly and found we need to pull 2-3/8" and 3.5" before 2-7/8". Pump down 2-7/8" tubing to confirm good cut. L. Diede, NMOCD ordered to use 3<sup>rd</sup> party plasma cutter to cut 2-3/8" tubing and 3.5" casing at same time. SDFD.

3/27/26 Open up well; no pressure. SD for safety precautions due to high winds.

3/28/26 Open up well; no pressure but slight trickle at surface. RU wireline and plasma cut 3.5" casing @ 3300'. TOH. Establish circulation out 8-5/8" casing. NU WH and PU 3.5" casing; it was free. Start pulling casing; collars too worn and getting stuck on elevators. LD 107 jts 3.5" casing. Attempt to pull 2-7/8" tubing; stuck. SDFD.

3/30/26 Open up well. Unable to release 2-7/8" tubing. L. Diede, NMOCD ordered to cut 2-7/8" at 3000'. RU wireline and jet cut @ 3000'. Unable to free 2-7/8" tubing. L. Diede, NMOCD ordered to circ well clean and prep to cut out wellheads. Establish circulation with 182 bbbls out 8-5/8" casing. SDFD.

3/31/26 Open up well; no pressure. Change out wellhead. SDFD.

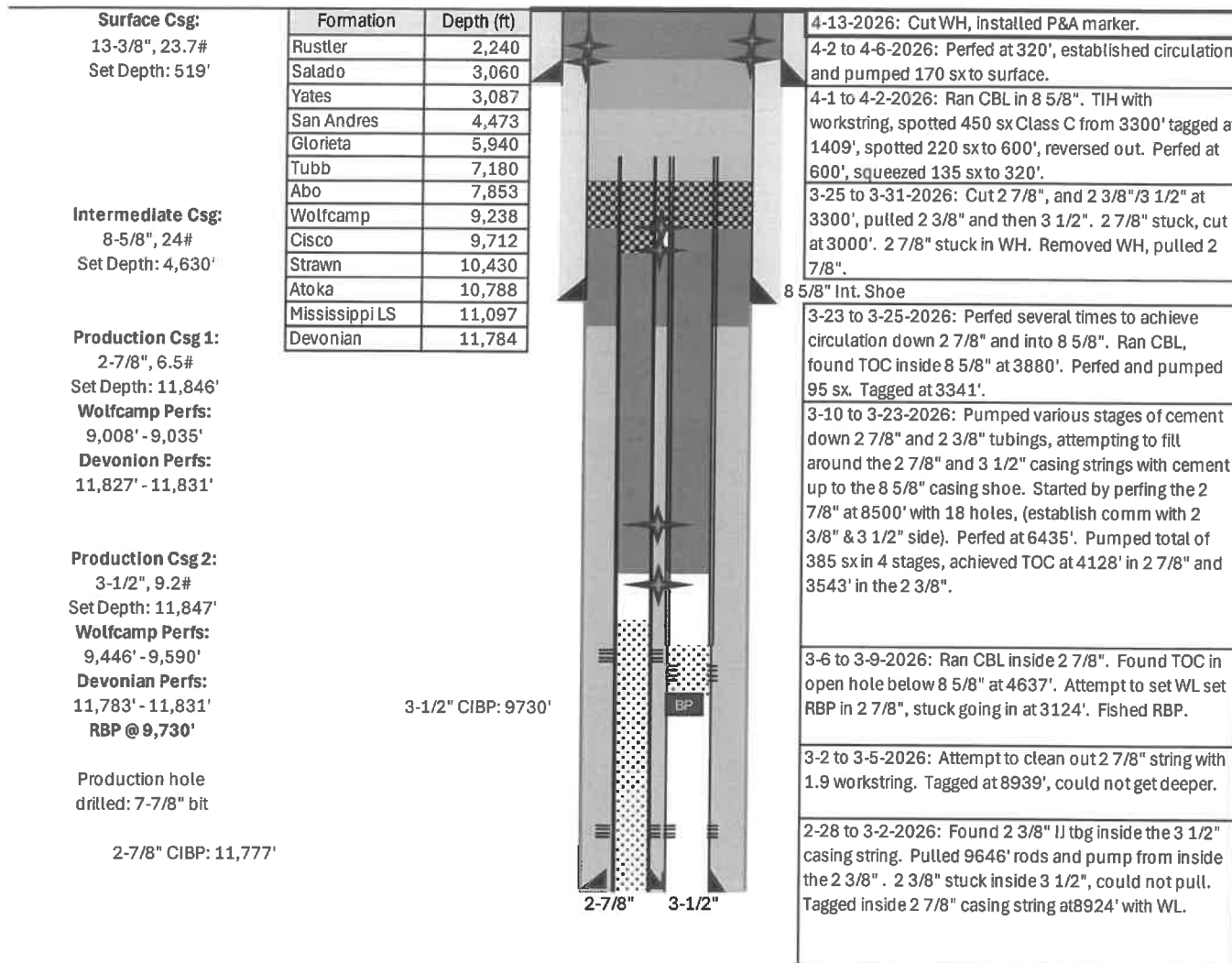
4/1/26 Open well; no pressure. Run CBL from 3300' to surface. L. Diede, NMOCD ordered to spot 450 sxs from 3300' to 1639'. Plug #6. Spot 450 sxs Class C cement from 3300' to 1639'. PUH to 987' and reverse circulate clean. SDFD.

4/2/26 Open up well; no pressure. Tag cement @ 1409'. L. Diede, NMOCD ordered to spot 220 sxs from 1409' to 600'. Plug #7. Spot 220 sxs Class C cement from 1409' to 600'. Reverse circulate clean at 600'. L. Diede, NMOCD, ordered to perforate @ 600' and squeeze a 200' balanced plug. RIH and perforated @ 600'. Established circulation. Plug #8. Squeeze 135 sxs Class C cement from 600' to 400'. SDFD.

4/6/26 Open up well; no pressure. Perform bubble test on surface and 8-5/8" casing; good. Tag cement @ 320'. L. Diede, NMOCD ordered to perf on to of tag and bring cement to surface. Perforated @ 320'. Establish circulation. Plug #9 Spot 170 sxs Class C cement from 320' to surface; circulated good cement. ND BOP. NU wellhead. RD equipment.

4/13/26 Dig out cellar and cut off wellhead. Found cement at surface. Set above ground P&A marker. Dig up anchors. Clean up location; backfill and clear. Job complete.

HH Harris #002  
 30-025-20931  
 Sec 35-T12S-R38E (Unit O)  
 Lea County, NM  
 Spud: August 17th, 1964  
 P&A Date: April 13, 2026

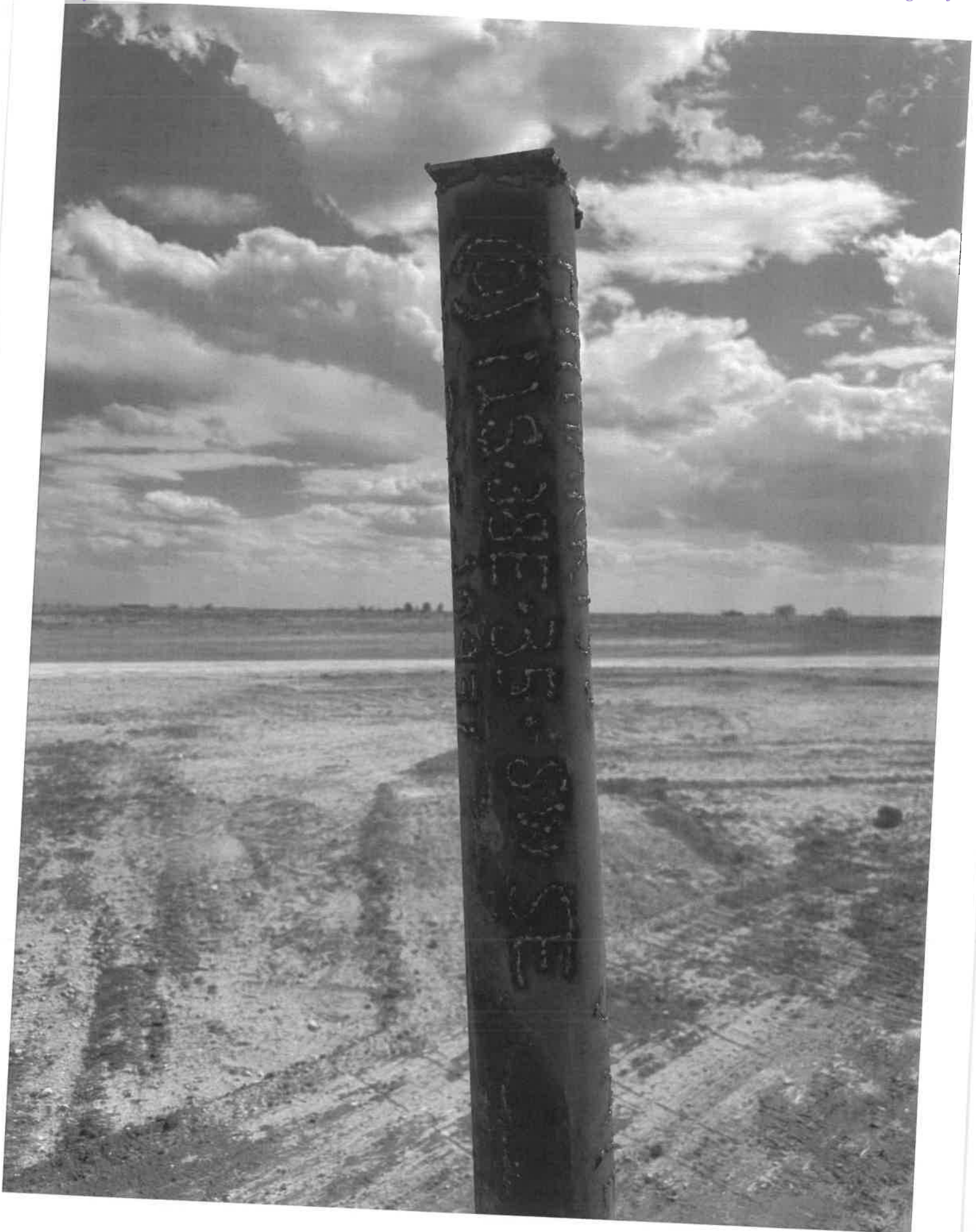


As Plugged WBD









Sante Fe Main Office  
Phone: (505) 476-3441

General Information  
Phone: (505) 629-6116

Online Phone Directory  
<https://www.emnrd.nm.gov/ocd/contact-us>

**State of New Mexico**  
**Energy, Minerals and Natural Resources**  
**Oil Conservation Division**  
**1220 S. St Francis Dr.**  
**Santa Fe, NM 87505**

DEFINITIONS

Action 580533

**DEFINITIONS**

Operator: JMR SERVICES, LLC (OPG Vendor) 4706 Green Tree Blvd. Midland, TX 79707	OGRID: 333576
	Action Number: 580533
	Action Type: [UF-OMA] Sub. Plugging (UF-OMA-C-103P)

**DEFINITIONS**

The OCD Mitigation Activity (OMA) forms are a subset of the OCD's forms exclusively designed for activities related to State of New Mexico's contracted evaluation, plugging, decommissioning, remediation, salvage and reclamation activities. Specifically, these forms are typically used where the OCD has acquired a hearing order allowing the OCD to perform mitigation activities on wells and associated facilities that no longer have an authorized or viable operator to perform the necessary work. These forms are not to be utilized for any other purpose.

Sante Fe Main Office  
Phone: (505) 476-3441

General Information  
Phone: (505) 629-6116

Online Phone Directory  
<https://www.emnrd.nm.gov/ocd/contact-us>

**State of New Mexico**  
**Energy, Minerals and Natural Resources**  
**Oil Conservation Division**  
**1220 S. St Francis Dr.**  
**Santa Fe, NM 87505**

QUESTIONS

Action 580533

**QUESTIONS**

Operator: JMR SERVICES, LLC (OPG Vendor) 4706 Green Tree Blvd. Midland, TX 79707	OGRID: 333576
	Action Number: 580533
	Action Type: [UF-OMA] Sub. Plugging (UF-OMA-C-103P)

**QUESTIONS**

<b>Prerequisites</b>	
[OGRID] Well Operator	[332127] Scorpion Oil & Gas, LLC
[API] Well Name and Number	[30-025-20931] H H HARRIS #002
Well Status	Plugged (not released)

Sante Fe Main Office  
Phone: (505) 476-3441

General Information  
Phone: (505) 629-6116

Online Phone Directory  
<https://www.emnrd.nm.gov/ocd/contact-us>

**State of New Mexico**  
**Energy, Minerals and Natural Resources**  
**Oil Conservation Division**  
**1220 S. St Francis Dr.**  
**Santa Fe, NM 87505**

CONDITIONS

Action 580533

**CONDITIONS**

Operator: JMR SERVICES, LLC (OPG Vendor) 4706 Green Tree Blvd. Midland, TX 79707	OGRID: 333576
	Action Number: 580533
	Action Type: [UF-OMA] Sub. Plugging (UF-OMA-C-103P)

**CONDITIONS**

Created By	Condition	Condition Date
loren.diede	None	4/30/2026