

Well Name: NEBU	Well Location: T31N / R6W / SEC 7 / SWSW / 36.909439 / -107.508987	County or Parish/State: SAN JUAN / NM
Well Number: 400	Type of Well: CONVENTIONAL GAS WELL	Allottee or Tribe Name:
Lease Number: NMSF78988	Unit or CA Name: NEBU--FC	Unit or CA Number: NMNM78402D
US Well Number: 3004526900	Operator: SIMCOE LLC	

Notice of Intent

Sundry ID: 2908098

Type of Submission: Notice of Intent

Type of Action: Temporary Abandonment

Date Sundry Submitted: 04/24/2026

Time Sundry Submitted: 10:00

Date proposed operation will begin: 04/03/2025

Procedure Description: The NEBU 400 well is placed in TA status, effective date 04/03/2025. SIMCOE requests a 1-year TA status extension from 04/03/2026 to 04/03/2027. This well is a Fruitland Coal Pressure Observation Well (POW), SIMCOE conducts annual BHP surveys to help with reservoir management.

Surface Disturbance

Is any additional surface disturbance proposed?: No

Well Name: NEBU

Well Location: T31N / R6W / SEC 7 / SWSW / 36.909439 / -107.508987

County or Parish/State: SAN JUAN / NM

Well Number: 400

Type of Well: CONVENTIONAL GAS WELL

Allottee or Tribe Name:

Lease Number: NMSF78988

Unit or CA Name: NEBU--FC

Unit or CA Number: NMNM78402D

US Well Number: 3004526900

Operator: SIMCOE LLC

Operator

I certify that the foregoing is true and correct. Title 18 U.S.C. Section 1001 and Title 43 U.S.C. Section 1212, make it a crime for any person knowingly and willfully to make to any department or agency of the United States any false, fictitious or fraudulent statements or representations as to any matter within its jurisdiction. Electronic submission of Sundry Notices through this system satisfies regulations requiring a

Operator Electronic Signature: CALE REDPATH

Signed on: APR 24, 2026 09:59 AM

Name: SIMCOE LLC

Title: Regulatory Analyst

Street Address: 1199 MAIN AVE SUITE 101

City: DURANGO State: CO

Phone: (970) 759-8799

Email address: CALE.REDPATH@MACHNR.COM

Field

Representative Name:

Street Address:

City: State: Zip:

Phone:

Email address:

BLM Point of Contact

BLM POC Name: KENNETH G RENNICK

BLM POC Title: Petroleum Engineer

BLM POC Phone: 5055647742

BLM POC Email Address: krennick@blm.gov

Disposition: Approved

Disposition Date: 04/27/2026

Signature: Kenneth Rennick



NEW MEXICO ENERGY, MINERALS and NATURAL RESOURCES DEPARTMENT

MECHANICAL INTEGRITY TEST REPORT (TA OR UIC)

Date of Test 4/3/25 Operator SIMCOE API # 30-0 45-26900

Property Name NEBU Well # 200 Location: Unit M Sec 7 Twn 31N Rge 6W

Land Type:

State _____
Federal
Private _____
Indian _____

Well Type:

Water Injection _____
Salt Water Disposal _____
Gas Injection _____
Producing Oil/Gas _____
Pressure observation

Temporarily Abandoned Well (Y/N): Expired TA Expires: _____

Casing Pres. 0 Tbg. SI Pres. N/A Max. Inj. Pres. N/A
Bradenhead Pres. 0 Tbg. Inj. Pres. N/A
Tubing Pres. 0
Int. Casing Pres. 0

Pressured annulus up to 560 psi. for 30 mins. Test passed/failed

REMARKS: Packer set @ 3095' Test to Surface.

By [Signature]
(Operator Representative)

Witness [Signature]
(NMOCD)

WGL
(Position)

Revised 02-11-02



NEW MEXICO ENERGY, MINERALS & NATURAL RESOURCES DEPARTMENT

OIL CONSERVATION DIVISION
AZTEC DISTRICT OFFICE
1000 RIO BRAZOS ROAD
AZTEC NM 87410
(505) 334-6178 FAX: (505) 334-6170
http://emnrd.state.nm.us/oed/District III/3distric.htm

BRADENHEAD TEST REPORT

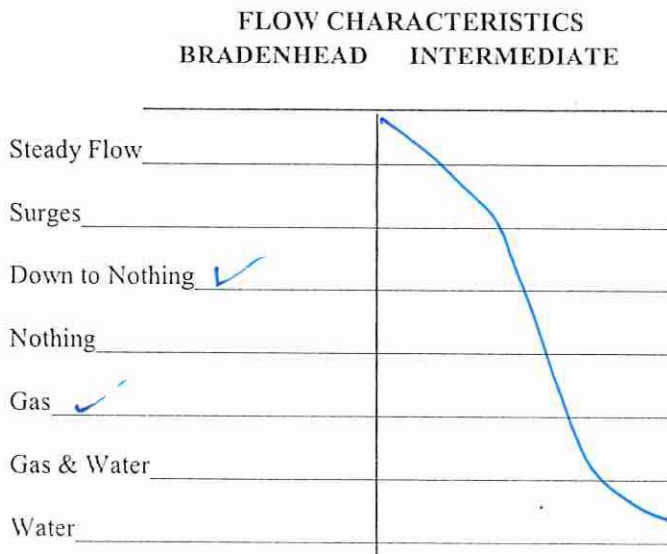
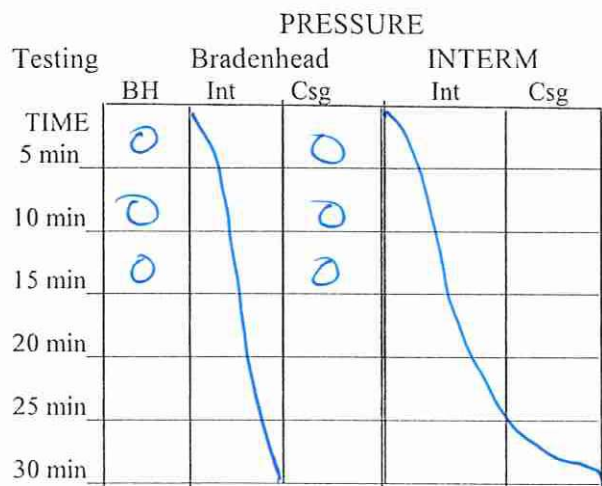
(submit 1 copy to above address)

Date of Test 4/3/25 Operator SIMPSON API #30-0 45-26902

Property Name NEBW Well No. 400 Location: Unit VM Section 7 Township 31N Range 6W

Well Status (Shut-In or Producing) Initial PSI: Tubing 0 Intermediate N/A Casing 0 Bradenhead 0

OPEN BRADENHEAD AND INTERMEDIATE TO ATMOSPHERE INDIVIDUALLY FOR 15 MINUTES EACH



If bradenhead flowed water, check all of the descriptions that apply below:

CLEAR FRESH SALTY SULFUR BLACK

5 MINUTE SHUT-IN PRESSURE BRADENHEAD 0 INTERMEDIATE N/A

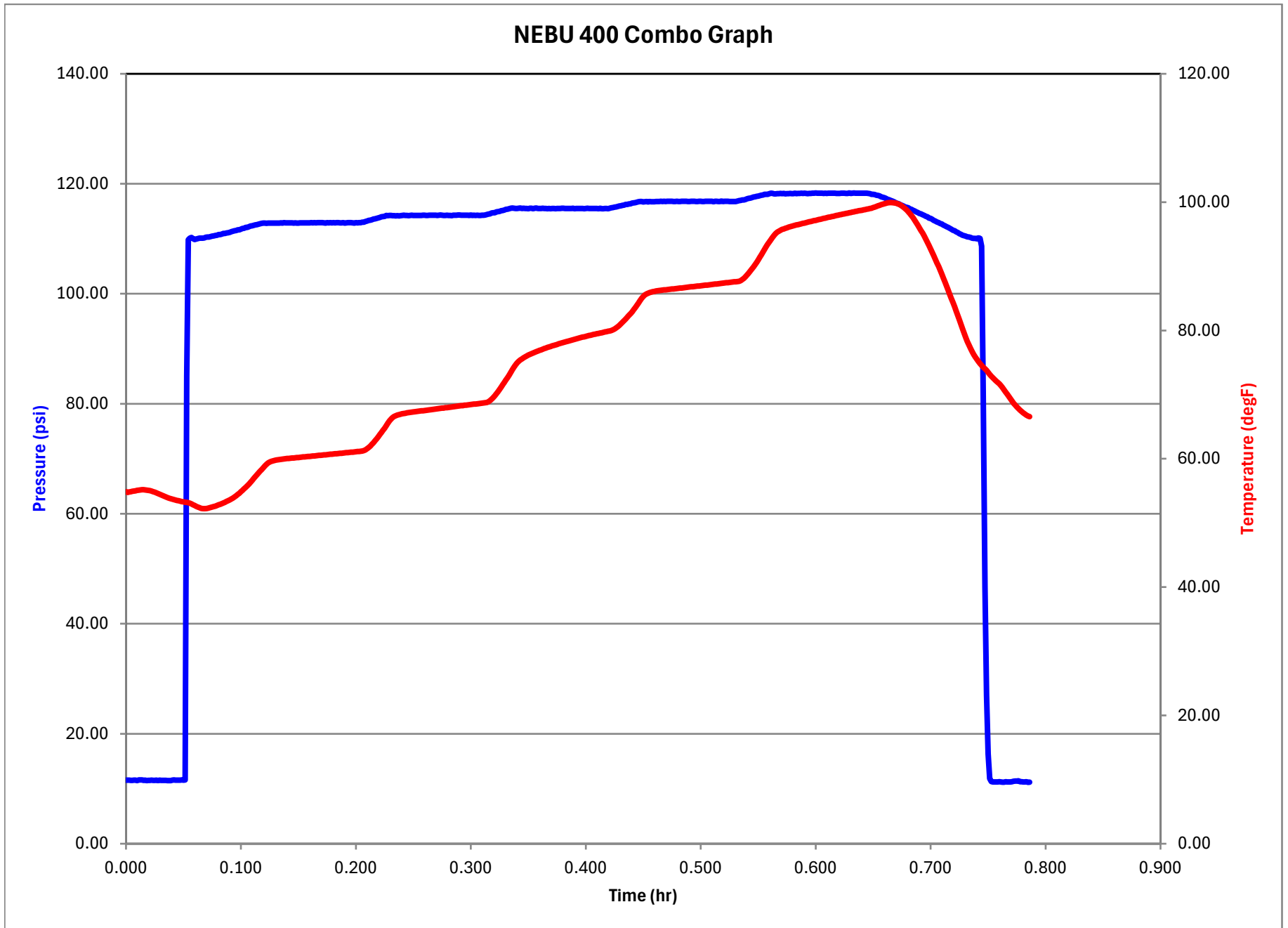
REMARKS:

zero on gauge small puff down to nothing when opened nothing throughout test. 5 min shut in = zero nothing when opened.

By [Signature] (Position)

Witness [Signature]

E-mail address



NEBU 400 DATA

Line No.	Date Time	Time	Pressure	Temperature	dPressure
	M/d/yyyy HH:mm:ss	hr	psi	degF	psi
1	4/4/2025 07:03:00	0.000	11.57	54.85	0.00
2	4/4/2025 07:03:05	0.001	11.57	54.77	0.00
3	4/4/2025 07:03:10	0.003	11.55	54.82	-0.02
4	4/4/2025 07:03:15	0.004	11.51	54.87	-0.04
5	4/4/2025 07:03:20	0.006	11.52	54.92	0.01
6	4/4/2025 07:03:25	0.007	11.56	54.97	0.04
7	4/4/2025 07:03:30	0.008	11.54	55.01	-0.01
8	4/4/2025 07:03:35	0.010	11.49	55.06	-0.05
9	4/4/2025 07:03:40	0.011	11.58	55.11	0.09
10	4/4/2025 07:03:45	0.013	11.59	55.15	0.01
11	4/4/2025 07:03:50	0.014	11.59	55.16	0.00
12	4/4/2025 07:03:55	0.015	11.52	55.16	-0.06
13	4/4/2025 07:04:00	0.017	11.56	55.15	0.04
14	4/4/2025 07:04:05	0.018	11.49	55.11	-0.07
15	4/4/2025 07:04:10	0.019	11.52	55.08	0.03
16	4/4/2025 07:04:15	0.021	11.53	55.03	0.01
17	4/4/2025 07:04:20	0.022	11.57	54.96	0.04
18	4/4/2025 07:04:25	0.024	11.54	54.88	-0.04
19	4/4/2025 07:04:30	0.025	11.53	54.78	-0.01
20	4/4/2025 07:04:35	0.026	11.55	54.68	0.02
21	4/4/2025 07:04:40	0.028	11.48	54.57	-0.07
22	4/4/2025 07:04:45	0.029	11.54	54.47	0.07
23	4/4/2025 07:04:50	0.031	11.52	54.37	-0.03
24	4/4/2025 07:04:55	0.032	11.51	54.27	0.00
25	4/4/2025 07:05:00	0.033	11.53	54.17	0.02
26	4/4/2025 07:05:05	0.035	11.52	54.06	-0.01
27	4/4/2025 07:05:10	0.036	11.48	53.96	-0.04
28	4/4/2025 07:05:15	0.038	11.49	53.86	0.00
29	4/4/2025 07:05:20	0.039	11.50	53.78	0.01
30	4/4/2025 07:05:25	0.040	11.54	53.71	0.04
31	4/4/2025 07:05:30	0.042	11.59	53.64	0.05
32	4/4/2025 07:05:35	0.043	11.57	53.58	-0.01
33	4/4/2025 07:05:40	0.044	11.57	53.51	-0.01
34	4/4/2025 07:05:45	0.046	11.57	53.45	0.00
35	4/4/2025 07:05:50	0.047	11.54	53.39	-0.03
36	4/4/2025 07:05:55	0.049	11.58	53.34	0.04
37	4/4/2025 07:06:00	0.050	11.57	53.27	-0.01
38	4/4/2025 07:06:05	0.051	11.61	53.22	0.03
39	4/4/2025 07:06:10	0.053	85.07	53.20	73.46
40	4/4/2025 07:06:15	0.054	109.84	53.14	24.77
41	4/4/2025 07:06:20	0.056	110.12	53.06	0.27

42	4/4/2025 07:06:25	0.057	110.24	52.96	0.13
43	4/4/2025 07:06:30	0.058	110.05	52.84	-0.19
44	4/4/2025 07:06:35	0.060	109.88	52.71	-0.18
45	4/4/2025 07:06:40	0.061	109.95	52.59	0.08
46	4/4/2025 07:06:45	0.063	110.03	52.47	0.07
47	4/4/2025 07:06:50	0.064	110.13	52.37	0.11
48	4/4/2025 07:06:55	0.065	110.10	52.29	-0.03
49	4/4/2025 07:07:00	0.067	110.13	52.24	0.03
50	4/4/2025 07:07:05	0.068	110.15	52.23	0.02
51	4/4/2025 07:07:10	0.069	110.28	52.25	0.13
52	4/4/2025 07:07:15	0.071	110.33	52.28	0.04
53	4/4/2025 07:07:20	0.072	110.33	52.33	0.01
54	4/4/2025 07:07:25	0.074	110.40	52.40	0.07
55	4/4/2025 07:07:30	0.075	110.48	52.47	0.08
56	4/4/2025 07:07:35	0.076	110.52	52.55	0.04
57	4/4/2025 07:07:40	0.078	110.62	52.64	0.10
58	4/4/2025 07:07:45	0.079	110.63	52.72	0.01
59	4/4/2025 07:07:50	0.081	110.77	52.82	0.14
60	4/4/2025 07:07:55	0.082	110.76	52.91	-0.01
61	4/4/2025 07:08:00	0.083	110.85	53.00	0.09
62	4/4/2025 07:08:05	0.085	110.96	53.10	0.11
63	4/4/2025 07:08:10	0.086	110.97	53.22	0.02
64	4/4/2025 07:08:15	0.088	111.05	53.34	0.08
65	4/4/2025 07:08:20	0.089	111.10	53.47	0.05
66	4/4/2025 07:08:25	0.090	111.19	53.60	0.09
67	4/4/2025 07:08:30	0.092	111.30	53.74	0.10
68	4/4/2025 07:08:35	0.093	111.37	53.89	0.07
69	4/4/2025 07:08:40	0.094	111.45	54.06	0.08
70	4/4/2025 07:08:45	0.096	111.49	54.24	0.04
71	4/4/2025 07:08:50	0.097	111.63	54.43	0.14
72	4/4/2025 07:08:55	0.099	111.64	54.63	0.01
73	4/4/2025 07:09:00	0.100	111.75	54.85	0.12
74	4/4/2025 07:09:05	0.101	111.87	55.07	0.12
75	4/4/2025 07:09:10	0.103	111.91	55.31	0.04
76	4/4/2025 07:09:15	0.104	112.06	55.55	0.15
77	4/4/2025 07:09:20	0.106	112.09	55.80	0.03
78	4/4/2025 07:09:25	0.107	112.19	56.07	0.10
79	4/4/2025 07:09:30	0.108	112.33	56.34	0.14
80	4/4/2025 07:09:35	0.110	112.37	56.62	0.04
81	4/4/2025 07:09:40	0.111	112.45	56.91	0.07
82	4/4/2025 07:09:45	0.113	112.55	57.20	0.10
83	4/4/2025 07:09:50	0.114	112.58	57.49	0.04
84	4/4/2025 07:09:55	0.115	112.66	57.77	0.08
85	4/4/2025 07:10:00	0.117	112.74	58.04	0.08

86	4/4/2025 07:10:05	0.118	112.79	58.33	0.05
87	4/4/2025 07:10:10	0.119	112.86	58.61	0.06
88	4/4/2025 07:10:15	0.121	112.87	58.88	0.02
89	4/4/2025 07:10:20	0.122	112.83	59.14	-0.04
90	4/4/2025 07:10:25	0.124	112.87	59.33	0.04
91	4/4/2025 07:10:30	0.125	112.86	59.48	-0.01
92	4/4/2025 07:10:35	0.126	112.86	59.59	0.00
93	4/4/2025 07:10:40	0.128	112.87	59.67	0.02
94	4/4/2025 07:10:45	0.129	112.85	59.74	-0.02
95	4/4/2025 07:10:50	0.131	112.87	59.80	0.02
96	4/4/2025 07:10:55	0.132	112.85	59.84	-0.03
97	4/4/2025 07:11:00	0.133	112.86	59.88	0.02
98	4/4/2025 07:11:05	0.135	112.88	59.91	0.02
99	4/4/2025 07:11:10	0.136	112.87	59.95	-0.01
100	4/4/2025 07:11:15	0.138	112.92	59.98	0.06
101	4/4/2025 07:11:20	0.139	112.89	60.00	-0.03
102	4/4/2025 07:11:25	0.140	112.88	60.03	-0.01
103	4/4/2025 07:11:30	0.142	112.88	60.05	-0.01
104	4/4/2025 07:11:35	0.143	112.90	60.08	0.02
105	4/4/2025 07:11:40	0.144	112.88	60.11	-0.02
106	4/4/2025 07:11:45	0.146	112.85	60.13	-0.03
107	4/4/2025 07:11:50	0.147	112.89	60.16	0.04
108	4/4/2025 07:11:55	0.149	112.87	60.18	-0.02
109	4/4/2025 07:12:00	0.150	112.86	60.20	-0.01
110	4/4/2025 07:12:05	0.151	112.90	60.23	0.04
111	4/4/2025 07:12:10	0.153	112.91	60.25	0.01
112	4/4/2025 07:12:15	0.154	112.89	60.28	-0.03
113	4/4/2025 07:12:20	0.156	112.92	60.30	0.03
114	4/4/2025 07:12:25	0.157	112.90	60.32	-0.01
115	4/4/2025 07:12:30	0.158	112.89	60.35	-0.01
116	4/4/2025 07:12:35	0.160	112.91	60.38	0.02
117	4/4/2025 07:12:40	0.161	112.93	60.40	0.02
118	4/4/2025 07:12:45	0.163	112.90	60.43	-0.03
119	4/4/2025 07:12:50	0.164	112.94	60.45	0.04
120	4/4/2025 07:12:55	0.165	112.91	60.47	-0.03
121	4/4/2025 07:13:00	0.167	112.92	60.50	0.01
122	4/4/2025 07:13:05	0.168	112.92	60.53	0.01
123	4/4/2025 07:13:10	0.169	112.95	60.55	0.02
124	4/4/2025 07:13:15	0.171	112.95	60.58	0.00
125	4/4/2025 07:13:20	0.172	112.89	60.60	-0.06
126	4/4/2025 07:13:25	0.174	112.87	60.62	-0.02
127	4/4/2025 07:13:30	0.175	112.92	60.65	0.05
128	4/4/2025 07:13:35	0.176	112.88	60.68	-0.04
129	4/4/2025 07:13:40	0.178	112.93	60.70	0.04

130	4/4/2025 07:13:45	0.179	112.91	60.72	-0.02
131	4/4/2025 07:13:50	0.181	112.94	60.75	0.04
132	4/4/2025 07:13:55	0.182	112.90	60.78	-0.04
133	4/4/2025 07:14:00	0.183	112.92	60.80	0.01
134	4/4/2025 07:14:05	0.185	112.92	60.83	0.01
135	4/4/2025 07:14:10	0.186	112.91	60.85	-0.01
136	4/4/2025 07:14:15	0.188	112.89	60.87	-0.02
137	4/4/2025 07:14:20	0.189	112.95	60.89	0.06
138	4/4/2025 07:14:25	0.190	112.87	60.92	-0.08
139	4/4/2025 07:14:30	0.192	112.89	60.94	0.02
140	4/4/2025 07:14:35	0.193	112.92	60.97	0.04
141	4/4/2025 07:14:40	0.194	112.92	61.00	0.00
142	4/4/2025 07:14:45	0.196	112.92	61.02	0.00
143	4/4/2025 07:14:50	0.197	112.90	61.05	-0.02
144	4/4/2025 07:14:55	0.199	112.87	61.07	-0.04
145	4/4/2025 07:15:00	0.200	112.93	61.09	0.07
146	4/4/2025 07:15:05	0.201	112.90	61.12	-0.04
147	4/4/2025 07:15:10	0.203	112.93	61.14	0.03
148	4/4/2025 07:15:15	0.204	112.92	61.17	-0.01
149	4/4/2025 07:15:20	0.206	113.00	61.20	0.08
150	4/4/2025 07:15:25	0.207	113.04	61.26	0.04
151	4/4/2025 07:15:30	0.208	113.15	61.38	0.12
152	4/4/2025 07:15:35	0.210	113.24	61.56	0.08
153	4/4/2025 07:15:40	0.211	113.34	61.76	0.10
154	4/4/2025 07:15:45	0.213	113.38	61.99	0.04
155	4/4/2025 07:15:50	0.214	113.46	62.25	0.08
156	4/4/2025 07:15:55	0.215	113.58	62.51	0.13
157	4/4/2025 07:16:00	0.217	113.63	62.81	0.05
158	4/4/2025 07:16:05	0.218	113.73	63.11	0.09
159	4/4/2025 07:16:10	0.219	113.80	63.43	0.07
160	4/4/2025 07:16:15	0.221	113.89	63.76	0.09
161	4/4/2025 07:16:20	0.222	113.98	64.09	0.09
162	4/4/2025 07:16:25	0.224	114.05	64.44	0.07
163	4/4/2025 07:16:30	0.225	114.10	64.79	0.04
164	4/4/2025 07:16:35	0.226	114.24	65.16	0.15
165	4/4/2025 07:16:40	0.228	114.20	65.54	-0.04
166	4/4/2025 07:16:45	0.229	114.23	65.89	0.02
167	4/4/2025 07:16:50	0.231	114.23	66.19	0.01
168	4/4/2025 07:16:55	0.232	114.20	66.42	-0.03
169	4/4/2025 07:17:00	0.233	114.22	66.59	0.02
170	4/4/2025 07:17:05	0.235	114.16	66.72	-0.05
171	4/4/2025 07:17:10	0.236	114.21	66.82	0.05
172	4/4/2025 07:17:15	0.238	114.17	66.90	-0.05
173	4/4/2025 07:17:20	0.239	114.22	66.96	0.06

174	4/4/2025	07:17:25	0.240	114.23	67.01	0.01
175	4/4/2025	07:17:30	0.242	114.27	67.07	0.04
176	4/4/2025	07:17:35	0.243	114.26	67.10	-0.01
177	4/4/2025	07:17:40	0.244	114.24	67.15	-0.03
178	4/4/2025	07:17:45	0.246	114.21	67.18	-0.03
179	4/4/2025	07:17:50	0.247	114.26	67.23	0.05
180	4/4/2025	07:17:55	0.249	114.28	67.26	0.02
181	4/4/2025	07:18:00	0.250	114.24	67.30	-0.04
182	4/4/2025	07:18:05	0.251	114.25	67.33	0.01
183	4/4/2025	07:18:10	0.253	114.25	67.36	0.01
184	4/4/2025	07:18:15	0.254	114.24	67.40	-0.01
185	4/4/2025	07:18:20	0.256	114.26	67.43	0.02
186	4/4/2025	07:18:25	0.257	114.26	67.46	-0.01
187	4/4/2025	07:18:30	0.258	114.27	67.49	0.01
188	4/4/2025	07:18:35	0.260	114.29	67.52	0.02
189	4/4/2025	07:18:40	0.261	114.24	67.56	-0.04
190	4/4/2025	07:18:45	0.263	114.24	67.59	0.00
191	4/4/2025	07:18:50	0.264	114.28	67.63	0.04
192	4/4/2025	07:18:55	0.265	114.28	67.65	0.01
193	4/4/2025	07:19:00	0.267	114.28	67.68	0.00
194	4/4/2025	07:19:05	0.268	114.27	67.72	-0.01
195	4/4/2025	07:19:10	0.269	114.29	67.76	0.02
196	4/4/2025	07:19:15	0.271	114.26	67.79	-0.03
197	4/4/2025	07:19:20	0.272	114.27	67.82	0.01
198	4/4/2025	07:19:25	0.274	114.31	67.85	0.04
199	4/4/2025	07:19:30	0.275	114.28	67.88	-0.03
200	4/4/2025	07:19:35	0.276	114.26	67.91	-0.02
201	4/4/2025	07:19:40	0.278	114.26	67.95	0.01
202	4/4/2025	07:19:45	0.279	114.29	67.98	0.03
203	4/4/2025	07:19:50	0.281	114.26	68.01	-0.04
204	4/4/2025	07:19:55	0.282	114.25	68.05	0.00
205	4/4/2025	07:20:00	0.283	114.22	68.08	-0.04
206	4/4/2025	07:20:05	0.285	114.27	68.11	0.06
207	4/4/2025	07:20:10	0.286	114.29	68.14	0.02
208	4/4/2025	07:20:15	0.288	114.30	68.17	0.01
209	4/4/2025	07:20:20	0.289	114.32	68.20	0.02
210	4/4/2025	07:20:25	0.290	114.32	68.24	0.00
211	4/4/2025	07:20:30	0.292	114.29	68.27	-0.03
212	4/4/2025	07:20:35	0.293	114.27	68.30	-0.01
213	4/4/2025	07:20:40	0.294	114.27	68.34	-0.01
214	4/4/2025	07:20:45	0.296	114.30	68.36	0.03
215	4/4/2025	07:20:50	0.297	114.27	68.40	-0.03
216	4/4/2025	07:20:55	0.299	114.25	68.42	-0.02
217	4/4/2025	07:21:00	0.300	114.32	68.46	0.08

218	4/4/2025 07:21:05	0.301	114.26	68.49	-0.06
219	4/4/2025 07:21:10	0.303	114.29	68.52	0.03
220	4/4/2025 07:21:15	0.304	114.23	68.54	-0.06
221	4/4/2025 07:21:20	0.306	114.27	68.57	0.04
222	4/4/2025 07:21:25	0.307	114.25	68.61	-0.02
223	4/4/2025 07:21:30	0.308	114.25	68.63	-0.01
224	4/4/2025 07:21:35	0.310	114.27	68.67	0.02
225	4/4/2025 07:21:40	0.311	114.28	68.69	0.01
226	4/4/2025 07:21:45	0.313	114.35	68.73	0.07
227	4/4/2025 07:21:50	0.314	114.41	68.78	0.06
228	4/4/2025 07:21:55	0.315	114.48	68.89	0.07
229	4/4/2025 07:22:00	0.317	114.54	69.07	0.06
230	4/4/2025 07:22:05	0.318	114.68	69.28	0.13
231	4/4/2025 07:22:10	0.319	114.73	69.54	0.06
232	4/4/2025 07:22:15	0.321	114.75	69.82	0.01
233	4/4/2025 07:22:20	0.322	114.89	70.12	0.14
234	4/4/2025 07:22:25	0.324	114.94	70.46	0.06
235	4/4/2025 07:22:30	0.325	114.99	70.81	0.05
236	4/4/2025 07:22:35	0.326	115.10	71.17	0.11
237	4/4/2025 07:22:40	0.328	115.15	71.53	0.05
238	4/4/2025 07:22:45	0.329	115.21	71.91	0.06
239	4/4/2025 07:22:50	0.331	115.33	72.28	0.12
240	4/4/2025 07:22:55	0.332	115.40	72.67	0.07
241	4/4/2025 07:23:00	0.333	115.47	73.06	0.07
242	4/4/2025 07:23:05	0.335	115.53	73.46	0.06
243	4/4/2025 07:23:10	0.336	115.61	73.87	0.07
244	4/4/2025 07:23:15	0.338	115.56	74.27	-0.05
245	4/4/2025 07:23:20	0.339	115.50	74.63	-0.06
246	4/4/2025 07:23:25	0.340	115.52	74.93	0.02
247	4/4/2025 07:23:30	0.342	115.55	75.18	0.03
248	4/4/2025 07:23:35	0.343	115.57	75.40	0.02
249	4/4/2025 07:23:40	0.344	115.52	75.57	-0.05
250	4/4/2025 07:23:45	0.346	115.55	75.73	0.04
251	4/4/2025 07:23:50	0.347	115.49	75.88	-0.06
252	4/4/2025 07:23:55	0.349	115.50	76.02	0.00
253	4/4/2025 07:24:00	0.350	115.49	76.15	-0.01
254	4/4/2025 07:24:05	0.351	115.54	76.27	0.06
255	4/4/2025 07:24:10	0.353	115.56	76.38	0.01
256	4/4/2025 07:24:15	0.354	115.49	76.49	-0.07
257	4/4/2025 07:24:20	0.356	115.55	76.60	0.06
258	4/4/2025 07:24:25	0.357	115.59	76.70	0.04
259	4/4/2025 07:24:30	0.358	115.51	76.80	-0.08
260	4/4/2025 07:24:35	0.360	115.52	76.89	0.01
261	4/4/2025 07:24:40	0.361	115.52	76.99	0.00

262	4/4/2025 07:24:45	0.363	115.56	77.08	0.04
263	4/4/2025 07:24:50	0.364	115.50	77.17	-0.06
264	4/4/2025 07:24:55	0.365	115.52	77.26	0.02
265	4/4/2025 07:25:00	0.367	115.48	77.34	-0.04
266	4/4/2025 07:25:05	0.368	115.52	77.43	0.04
267	4/4/2025 07:25:10	0.369	115.49	77.51	-0.03
268	4/4/2025 07:25:15	0.371	115.50	77.59	0.01
269	4/4/2025 07:25:20	0.372	115.52	77.67	0.02
270	4/4/2025 07:25:25	0.374	115.48	77.76	-0.04
271	4/4/2025 07:25:30	0.375	115.52	77.83	0.04
272	4/4/2025 07:25:35	0.376	115.51	77.91	-0.01
273	4/4/2025 07:25:40	0.378	115.51	77.99	0.00
274	4/4/2025 07:25:45	0.379	115.55	78.06	0.04
275	4/4/2025 07:25:50	0.381	115.55	78.13	0.00
276	4/4/2025 07:25:55	0.382	115.52	78.21	-0.03
277	4/4/2025 07:26:00	0.383	115.53	78.28	0.01
278	4/4/2025 07:26:05	0.385	115.53	78.35	0.00
279	4/4/2025 07:26:10	0.386	115.53	78.42	0.00
280	4/4/2025 07:26:15	0.388	115.53	78.49	0.01
281	4/4/2025 07:26:20	0.389	115.55	78.56	0.02
282	4/4/2025 07:26:25	0.390	115.48	78.63	-0.07
283	4/4/2025 07:26:30	0.392	115.52	78.70	0.03
284	4/4/2025 07:26:35	0.393	115.51	78.76	-0.01
285	4/4/2025 07:26:40	0.394	115.53	78.83	0.02
286	4/4/2025 07:26:45	0.396	115.51	78.89	-0.03
287	4/4/2025 07:26:50	0.397	115.50	78.95	0.00
288	4/4/2025 07:26:55	0.399	115.49	79.02	-0.01
289	4/4/2025 07:27:00	0.400	115.50	79.08	0.01
290	4/4/2025 07:27:05	0.401	115.53	79.14	0.04
291	4/4/2025 07:27:10	0.403	115.53	79.20	-0.01
292	4/4/2025 07:27:15	0.404	115.51	79.26	-0.01
293	4/4/2025 07:27:20	0.406	115.49	79.32	-0.02
294	4/4/2025 07:27:25	0.407	115.52	79.37	0.02
295	4/4/2025 07:27:30	0.408	115.50	79.43	-0.02
296	4/4/2025 07:27:35	0.410	115.50	79.49	0.00
297	4/4/2025 07:27:40	0.411	115.49	79.54	-0.01
298	4/4/2025 07:27:45	0.413	115.54	79.60	0.05
299	4/4/2025 07:27:50	0.414	115.49	79.65	-0.05
300	4/4/2025 07:27:55	0.415	115.49	79.71	0.00
301	4/4/2025 07:28:00	0.417	115.52	79.76	0.03
302	4/4/2025 07:28:05	0.418	115.51	79.81	-0.01
303	4/4/2025 07:28:10	0.419	115.49	79.86	-0.02
304	4/4/2025 07:28:15	0.421	115.56	79.92	0.07
305	4/4/2025 07:28:20	0.422	115.64	79.99	0.08

306	4/4/2025 07:28:25	0.424	115.66	80.09	0.02
307	4/4/2025 07:28:30	0.425	115.77	80.23	0.11
308	4/4/2025 07:28:35	0.426	115.81	80.40	0.04
309	4/4/2025 07:28:40	0.428	115.90	80.59	0.08
310	4/4/2025 07:28:45	0.429	115.96	80.80	0.06
311	4/4/2025 07:28:50	0.431	116.01	81.02	0.05
312	4/4/2025 07:28:55	0.432	116.08	81.27	0.07
313	4/4/2025 07:29:00	0.433	116.11	81.51	0.02
314	4/4/2025 07:29:05	0.435	116.23	81.78	0.12
315	4/4/2025 07:29:10	0.436	116.27	82.04	0.04
316	4/4/2025 07:29:15	0.438	116.31	82.32	0.05
317	4/4/2025 07:29:20	0.439	116.38	82.60	0.06
318	4/4/2025 07:29:25	0.440	116.48	82.91	0.11
319	4/4/2025 07:29:30	0.442	116.52	83.23	0.03
320	4/4/2025 07:29:35	0.443	116.59	83.57	0.07
321	4/4/2025 07:29:40	0.444	116.67	83.92	0.08
322	4/4/2025 07:29:45	0.446	116.74	84.27	0.07
323	4/4/2025 07:29:50	0.447	116.76	84.63	0.03
324	4/4/2025 07:29:55	0.449	116.79	84.98	0.02
325	4/4/2025 07:30:00	0.450	116.71	85.28	-0.07
326	4/4/2025 07:30:05	0.451	116.73	85.51	0.02
327	4/4/2025 07:30:10	0.453	116.77	85.69	0.04
328	4/4/2025 07:30:15	0.454	116.70	85.81	-0.07
329	4/4/2025 07:30:20	0.456	116.76	85.91	0.06
330	4/4/2025 07:30:25	0.457	116.75	85.98	-0.01
331	4/4/2025 07:30:30	0.458	116.74	86.05	-0.01
332	4/4/2025 07:30:35	0.460	116.72	86.09	-0.02
333	4/4/2025 07:30:40	0.461	116.79	86.14	0.07
334	4/4/2025 07:30:45	0.463	116.79	86.18	0.00
335	4/4/2025 07:30:50	0.464	116.79	86.21	0.00
336	4/4/2025 07:30:55	0.465	116.81	86.24	0.01
337	4/4/2025 07:31:00	0.467	116.76	86.28	-0.05
338	4/4/2025 07:31:05	0.468	116.82	86.32	0.06
339	4/4/2025 07:31:10	0.469	116.77	86.34	-0.05
340	4/4/2025 07:31:15	0.471	116.80	86.38	0.03
341	4/4/2025 07:31:20	0.472	116.83	86.40	0.03
342	4/4/2025 07:31:25	0.474	116.81	86.43	-0.02
343	4/4/2025 07:31:30	0.475	116.80	86.46	-0.01
344	4/4/2025 07:31:35	0.476	116.78	86.48	-0.02
345	4/4/2025 07:31:40	0.478	116.78	86.51	0.00
346	4/4/2025 07:31:45	0.479	116.82	86.54	0.03
347	4/4/2025 07:31:50	0.481	116.78	86.56	-0.03
348	4/4/2025 07:31:55	0.482	116.76	86.59	-0.02
349	4/4/2025 07:32:00	0.483	116.83	86.62	0.06

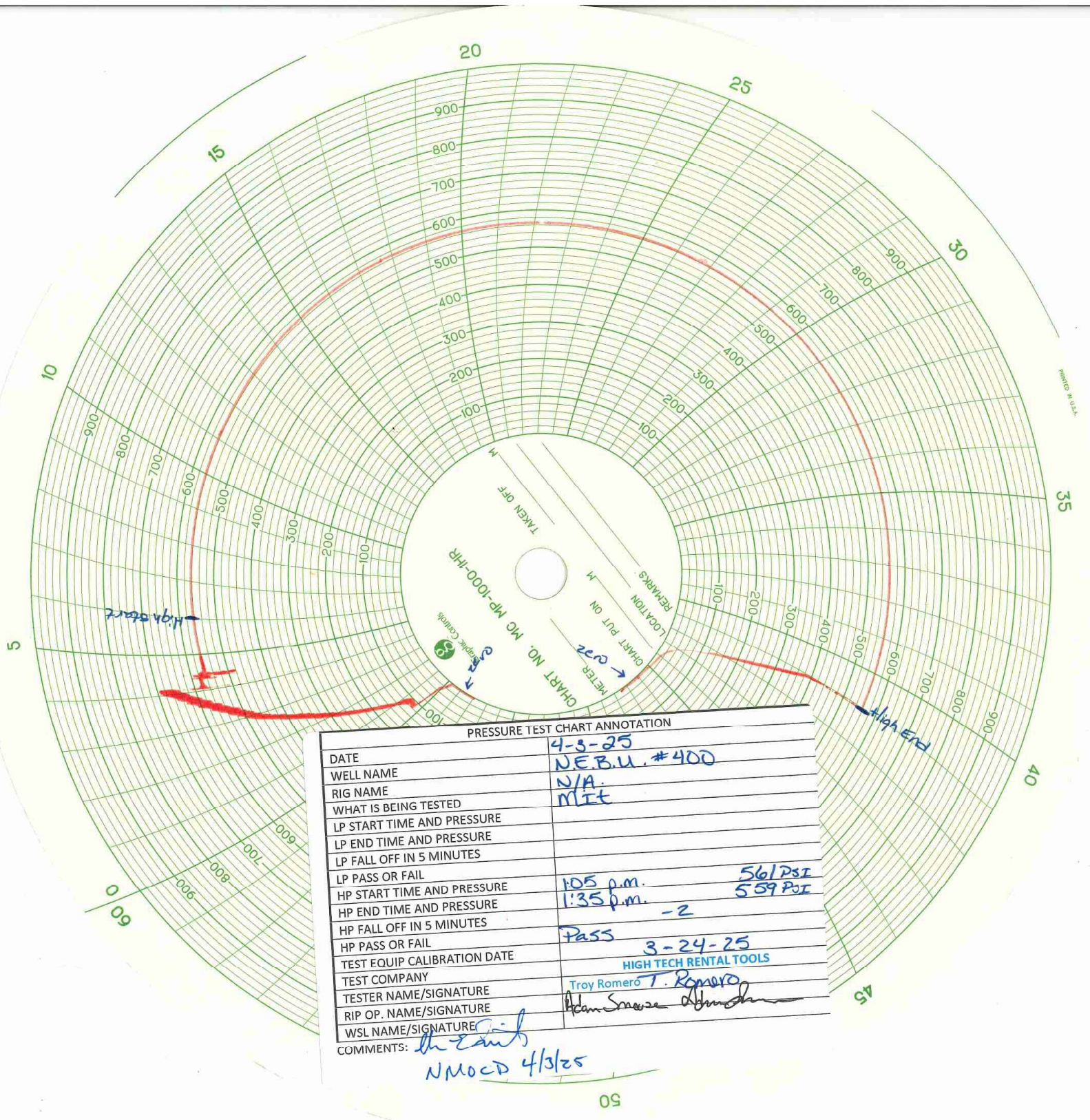
350	4/4/2025	07:32:05	0.485	116.82	86.65	-0.01
351	4/4/2025	07:32:10	0.486	116.80	86.68	-0.01
352	4/4/2025	07:32:15	0.488	116.81	86.71	0.01
353	4/4/2025	07:32:20	0.489	116.77	86.74	-0.04
354	4/4/2025	07:32:25	0.490	116.79	86.77	0.03
355	4/4/2025	07:32:30	0.492	116.81	86.80	0.02
356	4/4/2025	07:32:35	0.493	116.81	86.83	-0.01
357	4/4/2025	07:32:40	0.494	116.83	86.86	0.03
358	4/4/2025	07:32:45	0.496	116.77	86.89	-0.06
359	4/4/2025	07:32:50	0.497	116.79	86.91	0.03
360	4/4/2025	07:32:55	0.499	116.81	86.94	0.01
361	4/4/2025	07:33:00	0.500	116.83	86.96	0.03
362	4/4/2025	07:33:05	0.501	116.77	87.00	-0.06
363	4/4/2025	07:33:10	0.503	116.77	87.02	0.00
364	4/4/2025	07:33:15	0.504	116.81	87.05	0.04
365	4/4/2025	07:33:20	0.506	116.82	87.08	0.02
366	4/4/2025	07:33:25	0.507	116.84	87.11	0.01
367	4/4/2025	07:33:30	0.508	116.81	87.14	-0.03
368	4/4/2025	07:33:35	0.510	116.84	87.17	0.03
369	4/4/2025	07:33:40	0.511	116.75	87.19	-0.08
370	4/4/2025	07:33:45	0.513	116.82	87.22	0.07
371	4/4/2025	07:33:50	0.514	116.81	87.25	-0.01
372	4/4/2025	07:33:55	0.515	116.78	87.28	-0.03
373	4/4/2025	07:34:00	0.517	116.78	87.31	0.00
374	4/4/2025	07:34:05	0.518	116.85	87.34	0.07
375	4/4/2025	07:34:10	0.519	116.80	87.37	-0.06
376	4/4/2025	07:34:15	0.521	116.80	87.41	0.01
377	4/4/2025	07:34:20	0.522	116.82	87.43	0.01
378	4/4/2025	07:34:25	0.524	116.82	87.46	0.00
379	4/4/2025	07:34:30	0.525	116.80	87.49	-0.02
380	4/4/2025	07:34:35	0.526	116.78	87.52	-0.01
381	4/4/2025	07:34:40	0.528	116.78	87.55	-0.01
382	4/4/2025	07:34:45	0.529	116.78	87.58	0.01
383	4/4/2025	07:34:50	0.531	116.78	87.60	0.00
384	4/4/2025	07:34:55	0.532	116.86	87.63	0.08
385	4/4/2025	07:35:00	0.533	116.92	87.67	0.06
386	4/4/2025	07:35:05	0.535	116.99	87.77	0.07
387	4/4/2025	07:35:10	0.536	117.04	87.93	0.05
388	4/4/2025	07:35:15	0.538	117.07	88.13	0.02
389	4/4/2025	07:35:20	0.539	117.16	88.37	0.10
390	4/4/2025	07:35:25	0.540	117.28	88.64	0.12
391	4/4/2025	07:35:30	0.542	117.34	88.93	0.06
392	4/4/2025	07:35:35	0.543	117.39	89.24	0.05
393	4/4/2025	07:35:40	0.544	117.46	89.56	0.08

394	4/4/2025 07:35:45	0.546	117.58	89.89	0.12
395	4/4/2025 07:35:50	0.547	117.64	90.24	0.06
396	4/4/2025 07:35:55	0.549	117.70	90.62	0.06
397	4/4/2025 07:36:00	0.550	117.76	90.99	0.06
398	4/4/2025 07:36:05	0.551	117.83	91.39	0.07
399	4/4/2025 07:36:10	0.553	117.91	91.79	0.08
400	4/4/2025 07:36:15	0.554	117.97	92.21	0.06
401	4/4/2025 07:36:20	0.556	118.09	92.63	0.12
402	4/4/2025 07:36:25	0.557	118.07	93.04	-0.02
403	4/4/2025 07:36:30	0.558	118.10	93.43	0.03
404	4/4/2025 07:36:35	0.560	118.20	93.82	0.10
405	4/4/2025 07:36:40	0.561	118.28	94.19	0.08
406	4/4/2025 07:36:45	0.563	118.24	94.53	-0.04
407	4/4/2025 07:36:50	0.564	118.15	94.85	-0.09
408	4/4/2025 07:36:55	0.565	118.18	95.11	0.03
409	4/4/2025 07:37:00	0.567	118.22	95.32	0.04
410	4/4/2025 07:37:05	0.568	118.21	95.47	-0.02
411	4/4/2025 07:37:10	0.569	118.24	95.61	0.03
412	4/4/2025 07:37:15	0.571	118.23	95.74	-0.01
413	4/4/2025 07:37:20	0.572	118.26	95.83	0.03
414	4/4/2025 07:37:25	0.574	118.19	95.93	-0.07
415	4/4/2025 07:37:30	0.575	118.20	96.01	0.01
416	4/4/2025 07:37:35	0.576	118.20	96.09	0.00
417	4/4/2025 07:37:40	0.578	118.24	96.16	0.04
418	4/4/2025 07:37:45	0.579	118.21	96.23	-0.03
419	4/4/2025 07:37:50	0.581	118.21	96.30	0.01
420	4/4/2025 07:37:55	0.582	118.27	96.37	0.06
421	4/4/2025 07:38:00	0.583	118.22	96.44	-0.05
422	4/4/2025 07:38:05	0.585	118.27	96.50	0.05
423	4/4/2025 07:38:10	0.586	118.24	96.57	-0.03
424	4/4/2025 07:38:15	0.588	118.30	96.62	0.06
425	4/4/2025 07:38:20	0.589	118.24	96.69	-0.06
426	4/4/2025 07:38:25	0.590	118.29	96.74	0.05
427	4/4/2025 07:38:30	0.592	118.24	96.81	-0.06
428	4/4/2025 07:38:35	0.593	118.22	96.86	-0.01
429	4/4/2025 07:38:40	0.594	118.23	96.93	0.01
430	4/4/2025 07:38:45	0.596	118.26	96.99	0.03
431	4/4/2025 07:38:50	0.597	118.28	97.05	0.02
432	4/4/2025 07:38:55	0.599	118.29	97.11	0.01
433	4/4/2025 07:39:00	0.600	118.32	97.16	0.03
434	4/4/2025 07:39:05	0.601	118.30	97.22	-0.02
435	4/4/2025 07:39:10	0.603	118.28	97.28	-0.02
436	4/4/2025 07:39:15	0.604	118.27	97.34	-0.01
437	4/4/2025 07:39:20	0.606	118.29	97.40	0.01

438	4/4/2025	07:39:25	0.607	118.24	97.46	-0.05
439	4/4/2025	07:39:30	0.608	118.29	97.51	0.05
440	4/4/2025	07:39:35	0.610	118.25	97.57	-0.04
441	4/4/2025	07:39:40	0.611	118.30	97.63	0.05
442	4/4/2025	07:39:45	0.613	118.31	97.69	0.01
443	4/4/2025	07:39:50	0.614	118.30	97.74	-0.01
444	4/4/2025	07:39:55	0.615	118.29	97.80	-0.01
445	4/4/2025	07:40:00	0.617	118.29	97.86	0.00
446	4/4/2025	07:40:05	0.618	118.25	97.91	-0.04
447	4/4/2025	07:40:10	0.619	118.24	97.97	-0.01
448	4/4/2025	07:40:15	0.621	118.27	98.01	0.03
449	4/4/2025	07:40:20	0.622	118.30	98.07	0.03
450	4/4/2025	07:40:25	0.624	118.30	98.13	0.00
451	4/4/2025	07:40:30	0.625	118.28	98.18	-0.03
452	4/4/2025	07:40:35	0.626	118.27	98.23	-0.01
453	4/4/2025	07:40:40	0.628	118.26	98.29	-0.01
454	4/4/2025	07:40:45	0.629	118.34	98.34	0.09
455	4/4/2025	07:40:50	0.631	118.26	98.39	-0.09
456	4/4/2025	07:40:55	0.632	118.27	98.45	0.01
457	4/4/2025	07:41:00	0.633	118.34	98.49	0.07
458	4/4/2025	07:41:05	0.635	118.27	98.55	-0.07
459	4/4/2025	07:41:10	0.636	118.30	98.60	0.03
460	4/4/2025	07:41:15	0.638	118.31	98.65	0.01
461	4/4/2025	07:41:20	0.639	118.29	98.70	-0.02
462	4/4/2025	07:41:25	0.640	118.28	98.75	-0.01
463	4/4/2025	07:41:30	0.642	118.29	98.80	0.01
464	4/4/2025	07:41:35	0.643	118.29	98.85	0.01
465	4/4/2025	07:41:40	0.644	118.27	98.91	-0.02
466	4/4/2025	07:41:45	0.646	118.24	98.95	-0.03
467	4/4/2025	07:41:50	0.647	118.22	99.00	-0.03
468	4/4/2025	07:41:55	0.649	118.10	99.06	-0.12
469	4/4/2025	07:42:00	0.650	118.09	99.15	-0.01
470	4/4/2025	07:42:05	0.651	118.03	99.24	-0.06
471	4/4/2025	07:42:10	0.653	117.93	99.33	-0.10
472	4/4/2025	07:42:15	0.654	117.88	99.43	-0.05
473	4/4/2025	07:42:20	0.656	117.80	99.51	-0.08
474	4/4/2025	07:42:25	0.657	117.65	99.60	-0.15
475	4/4/2025	07:42:30	0.658	117.56	99.69	-0.08
476	4/4/2025	07:42:35	0.660	117.49	99.76	-0.07
477	4/4/2025	07:42:40	0.661	117.36	99.83	-0.13
478	4/4/2025	07:42:45	0.663	117.20	99.88	-0.16
479	4/4/2025	07:42:50	0.664	117.13	99.92	-0.07
480	4/4/2025	07:42:55	0.665	116.97	99.93	-0.15
481	4/4/2025	07:43:00	0.667	116.86	99.93	-0.12

482	4/4/2025 07:43:05	0.668	116.73	99.90	-0.13
483	4/4/2025 07:43:10	0.669	116.59	99.85	-0.14
484	4/4/2025 07:43:15	0.671	116.47	99.77	-0.12
485	4/4/2025 07:43:20	0.672	116.39	99.67	-0.08
486	4/4/2025 07:43:25	0.674	116.22	99.55	-0.17
487	4/4/2025 07:43:30	0.675	116.09	99.40	-0.13
488	4/4/2025 07:43:35	0.676	115.96	99.23	-0.13
489	4/4/2025 07:43:40	0.678	115.81	99.01	-0.15
490	4/4/2025 07:43:45	0.679	115.70	98.77	-0.11
491	4/4/2025 07:43:50	0.681	115.63	98.50	-0.07
492	4/4/2025 07:43:55	0.682	115.42	98.21	-0.20
493	4/4/2025 07:44:00	0.683	115.34	97.89	-0.08
494	4/4/2025 07:44:05	0.685	115.16	97.56	-0.18
495	4/4/2025 07:44:10	0.686	115.07	97.20	-0.09
496	4/4/2025 07:44:15	0.688	114.90	96.82	-0.18
497	4/4/2025 07:44:20	0.689	114.79	96.42	-0.10
498	4/4/2025 07:44:25	0.690	114.63	96.01	-0.16
499	4/4/2025 07:44:30	0.692	114.53	95.59	-0.10
500	4/4/2025 07:44:35	0.693	114.38	95.15	-0.15
501	4/4/2025 07:44:40	0.694	114.24	94.69	-0.14
502	4/4/2025 07:44:45	0.696	114.08	94.21	-0.16
503	4/4/2025 07:44:50	0.697	113.99	93.73	-0.10
504	4/4/2025 07:44:55	0.699	113.77	93.23	-0.22
505	4/4/2025 07:45:00	0.700	113.72	92.71	-0.04
506	4/4/2025 07:45:05	0.701	113.55	92.19	-0.18
507	4/4/2025 07:45:10	0.703	113.35	91.65	-0.19
508	4/4/2025 07:45:15	0.704	113.24	91.09	-0.11
509	4/4/2025 07:45:20	0.706	113.06	90.53	-0.18
510	4/4/2025 07:45:25	0.707	112.93	89.96	-0.13
511	4/4/2025 07:45:30	0.708	112.79	89.37	-0.14
512	4/4/2025 07:45:35	0.710	112.67	88.77	-0.12
513	4/4/2025 07:45:40	0.711	112.50	88.15	-0.17
514	4/4/2025 07:45:45	0.713	112.37	87.54	-0.13
515	4/4/2025 07:45:50	0.714	112.22	86.91	-0.15
516	4/4/2025 07:45:55	0.715	112.07	86.28	-0.15
517	4/4/2025 07:46:00	0.717	111.90	85.64	-0.17
518	4/4/2025 07:46:05	0.718	111.76	84.99	-0.14
519	4/4/2025 07:46:10	0.719	111.56	84.34	-0.20
520	4/4/2025 07:46:15	0.721	111.44	83.68	-0.11
521	4/4/2025 07:46:20	0.722	111.27	83.01	-0.17
522	4/4/2025 07:46:25	0.724	111.13	82.35	-0.14
523	4/4/2025 07:46:30	0.725	110.94	81.66	-0.19
524	4/4/2025 07:46:35	0.726	110.80	80.97	-0.15
525	4/4/2025 07:46:40	0.728	110.63	80.28	-0.16

526	4/4/2025 07:46:45	0.729	110.56	79.59	-0.07
527	4/4/2025 07:46:50	0.731	110.47	78.93	-0.09
528	4/4/2025 07:46:55	0.732	110.34	78.31	-0.13
529	4/4/2025 07:47:00	0.733	110.31	77.72	-0.04
530	4/4/2025 07:47:05	0.735	110.25	77.18	-0.06
531	4/4/2025 07:47:10	0.736	110.11	76.69	-0.14
532	4/4/2025 07:47:15	0.738	110.09	76.25	-0.02
533	4/4/2025 07:47:20	0.739	110.06	75.85	-0.03
534	4/4/2025 07:47:25	0.740	109.98	75.49	-0.08
535	4/4/2025 07:47:30	0.742	110.15	75.14	0.17
536	4/4/2025 07:47:35	0.743	110.07	74.83	-0.08
537	4/4/2025 07:47:40	0.744	108.63	74.55	-1.44
538	4/4/2025 07:47:45	0.746	82.37	74.29	-26.26
539	4/4/2025 07:47:50	0.747	46.52	74.03	-35.85
540	4/4/2025 07:47:55	0.749	27.03	73.77	-19.49
541	4/4/2025 07:48:00	0.750	16.34	73.47	-10.69
542	4/4/2025 07:48:05	0.751	11.83	73.17	-4.51
543	4/4/2025 07:48:10	0.753	11.31	72.88	-0.52
544	4/4/2025 07:48:15	0.754	11.24	72.61	-0.07
545	4/4/2025 07:48:20	0.756	11.24	72.37	0.00
546	4/4/2025 07:48:25	0.757	11.22	72.15	-0.02
547	4/4/2025 07:48:30	0.758	11.25	71.92	0.02
548	4/4/2025 07:48:35	0.760	11.28	71.69	0.04
549	4/4/2025 07:48:40	0.761	11.24	71.40	-0.04
550	4/4/2025 07:48:45	0.763	11.21	71.08	-0.03
551	4/4/2025 07:48:50	0.764	11.20	70.74	0.00
552	4/4/2025 07:48:55	0.765	11.26	70.39	0.05
553	4/4/2025 07:49:00	0.767	11.24	70.05	-0.02
554	4/4/2025 07:49:05	0.768	11.25	69.71	0.00
555	4/4/2025 07:49:10	0.769	11.22	69.36	-0.03
556	4/4/2025 07:49:15	0.771	11.29	69.00	0.07
557	4/4/2025 07:49:20	0.772	11.34	68.67	0.05
558	4/4/2025 07:49:25	0.774	11.38	68.36	0.04
559	4/4/2025 07:49:30	0.775	11.42	68.08	0.03
560	4/4/2025 07:49:35	0.776	11.43	67.83	0.01
561	4/4/2025 07:49:40	0.778	11.26	67.59	-0.16
562	4/4/2025 07:49:45	0.779	11.27	67.36	0.01
563	4/4/2025 07:49:50	0.781	11.24	67.16	-0.04
564	4/4/2025 07:49:55	0.782	11.25	66.97	0.01
565	4/4/2025 07:50:00	0.783	11.26	66.82	0.01
566	4/4/2025 07:50:05	0.785	11.17	66.69	-0.09
567	4/4/2025 07:50:10	0.786	11.21	66.58	0.04



PRESSURE TEST CHART ANNOTATION	
DATE	4-3-25
WELL NAME	NE.B.U. #400
RIG NAME	N/A
WHAT IS BEING TESTED	Mitt
LP START TIME AND PRESSURE	
LP END TIME AND PRESSURE	
LP FALL OFF IN 5 MINUTES	
LP PASS OR FAIL	
HP START TIME AND PRESSURE	1:05 p.m. 561 PSI
HP END TIME AND PRESSURE	1:35 p.m. 559 PSI
HP FALL OFF IN 5 MINUTES	-2
HP PASS OR FAIL	Pass
TEST EQUIP CALIBRATION DATE	3-24-25
TEST COMPANY	HIGH TECH RENTAL TOOLS
TESTER NAME/SIGNATURE	Troy Romero T. Romero
RIP OP. NAME/SIGNATURE	Adam Smoore
WSL NAME/SIGNATURE	
COMMENTS:	the tank NMOCD 4/3/25

Sante Fe Main Office
Phone: (505) 476-3441

General Information
Phone: (505) 629-6116

Online Phone Directory
<https://www.emnrd.nm.gov/ocd/contact-us>

State of New Mexico
Energy, Minerals and Natural Resources
Oil Conservation Division
1220 S. St Francis Dr.
Santa Fe, NM 87505

CONDITIONS

Action 580656

CONDITIONS

Operator: SIMCOE LLC 1199 Main Ave., Suite 101 Durango, CO 81301	OGRID: 329736
	Action Number: 580656
	Action Type: [C-103U] Sub. Temporary Abandonment (C-103U)

CONDITIONS

Created By	Condition	Condition Date
andrew.fordyce	None	5/1/2026