

District I  
1625 N. French Dr., Hobbs, NM 88240  
District II  
811 S. First St., Artesia, NM 88210  
District III  
1000 Rio Brazos Rd., Aztec, NM 87410  
District IV  
1220 S. St. Francis Dr., Santa Fe, NM 87505

State of New Mexico  
Energy, Minerals & Natural Resources

Form C-104  
Revised August 1, 2011

Oil Conservation Division  
1220 South St. Francis Dr.  
Santa Fe, NM 87505

Submit one copy to appropriate District Office

AMENDED REPORT

**I. REQUEST FOR ALLOWABLE AND AUTHORIZATION TO TRANSPORT**

<sup>1</sup> Operator name and Address SPUR ENERGY PARTNERS LLC 9655 KATY FREEWAY, SUITE 500 HOUSTON, TX 77024		<sup>2</sup> OGRID Number 328947
		<sup>3</sup> Reason for Filing Code/ Effective Date NW 11/15/2023
<sup>4</sup> API Number 30 - 0 15-53494	<sup>5</sup> Pool Name PENASCO DRAW; SA-YESO (ASSOC)	<sup>6</sup> Pool Code 50270
<sup>7</sup> Property Code 333829	<sup>8</sup> Property Name STROS 29	<sup>9</sup> Well Number 20H

**II. <sup>10</sup> Surface Location**

Ul or lot no.	Section	Township	Range	Lot Idn	Feet from the	North/South Line	Feet from the	East/West line	County
A	30	18S	26E		900	NORTH	275	EAST	EDDY

**<sup>11</sup> Bottom Hole Location**

FTP: 606' FNL 170' FWL LTP: 607' FNL 116' FEL

UL or lot no.	Section	Township	Range	Lot Idn	Feet from the	North/South line	Feet from the	East/West line	County
A	29	18S	26E		607	NORTH	45	EAST	EDDY
<sup>12</sup> Lse Code P	<sup>13</sup> Producing Method Code P	<sup>14</sup> Gas Connection Date 08/15/2023	<sup>15</sup> C-129 Permit Number	<sup>16</sup> C-129 Effective Date	<sup>17</sup> C-129 Expiration Date				

**III. Oil and Gas Transporters**

<sup>18</sup> Transporter OGRID	<sup>19</sup> Transporter Name and Address	<sup>20</sup> O/G/W
221115	FRONTIER FIELD SERVICES, LLC 4200 E. SKELLY DR., SUITE 700, TULSA, OK 74135	G
33479	HOLLYFRONTIER REFINING & MARKETING 2828 N. HARWOOD, SUITE 1300, DALLAS, TX 75201	O

**IV. Well Completion Data**

<sup>21</sup> Spud Date	<sup>22</sup> Ready Date	<sup>23</sup> TD	<sup>24</sup> PBTD	<sup>25</sup> Perforations	<sup>26</sup> DHC, MC
04/30/2023	11/15/2023	8050'M/2740'V	8004'M/2740'V	2982'-7980'	
<sup>27</sup> Hole Size	<sup>28</sup> Casing & Tubing Size	<sup>29</sup> Depth Set	<sup>30</sup> Sacks Cement		
12-1/4"	9-5/8" 36# J-55 BTC CSG	1048'	545 SXS (CIRC TO SURFACE)		
8-3/4"	7" 32# L-80 BK-HT CSG	2916'	1520 SXS (CIRC TO SURFACE)		
8-3/4"	5-1/2" 20# L-80 BK-HT CSG	8050'	1520 SXS (CIRC TO SURFACE)		
	3-1/2" J-55 TBG	2769'			

**V. Well Test Data**

<sup>31</sup> Date New Oil	<sup>32</sup> Gas Delivery Date	<sup>33</sup> Test Date	<sup>34</sup> Test Length	<sup>35</sup> Tbg. Pressure	<sup>36</sup> Csg. Pressure
09/01/2023	09/01/2023	11/10/2023	24-HOUR	198	104
<sup>37</sup> Choke Size	<sup>38</sup> Oil	<sup>39</sup> Water	<sup>40</sup> Gas	<sup>41</sup> Test Method	
NA	474	3180	1030	PUMPING ON ESP	

<sup>42</sup> I hereby certify that the rules of the Oil Conservation Division have been complied with and that the information given above is true and complete to the best of my knowledge and belief.

Signature: *Sarah Chapman*  
Printed name: SARAH CHAPMAN  
Title: REGULATORY DIRECTOR  
E-mail Address: SCHAPMAN@SPURENERGY.COM  
Date: 11/13/2023 Phone: 832-930-8613

OIL CONSERVATION DIVISION  
Approved by:  
Title:  
Approval Date:

District I  
1625 N. French Dr., Hobbs, NM 88240  
Phone: (575) 393-6161 Fax: (575) 393-0720  
District II  
811 S. First St., Artesia, NM 88210  
Phone: (575) 748-1283 Fax: (575) 748-9720  
District III  
1000 Rio Brazos Road, Aztec, NM 87410  
Phone: (505) 334-6178 Fax: (505) 334-6170  
District IV  
1220 S. St. Francis Dr., Santa Fe, NM 87505  
Phone: (505) 476-3460 Fax: (505) 476-3462

State of New Mexico  
Energy, Minerals & Natural Resources Department  
OIL CONSERVATION DIVISION  
1220 South St. Francis Dr.  
Santa Fe, NM 87505

Form C-102  
Revised August 1, 2011  
Submit one copy to appropriate  
District Office

AMENDED REPORT  
**AS COMPLETED**

WELL LOCATION AND ACREAGE DEDICATION PLAT

<sup>1</sup> API Number <b>30-015-53494</b>		<sup>2</sup> Pool Code <b>50270</b>		<sup>3</sup> Pool Name <b>PENASCO DRAW;SA-YESO (ASSOC)</b>	
<sup>4</sup> Property Code <b>333829</b>		<sup>5</sup> Property Name <b>STROS 29</b>			<sup>6</sup> Well Number <b>20H</b>
<sup>7</sup> OGRID NO. <b>328947</b>		<sup>8</sup> Operator Name <b>SPUR ENERGY PARTNERS LLC.</b>			<sup>9</sup> Elevation <b>3441</b>

<sup>10</sup> Surface Location

UL or lot no.	Section	Township	Range	Lot Idn	Feet from the	North/South line	Feet From the	East/West line	County
<b>A</b>	<b>30</b>	<b>18S</b>	<b>26E</b>		<b>900</b>	<b>NORTH</b>	<b>275</b>	<b>EAST</b>	<b>EDDY</b>

<sup>11</sup> Bottom Hole Location If Different From Surface

UL or lot no.	Section	Township	Range	Lot Idn	Feet from the	North/South line	Feet from the	East/West line	County
<b>A</b>	<b>29</b>	<b>18S</b>	<b>26E</b>		<b>607</b>	<b>NORTH</b>	<b>45</b>	<b>EAST</b>	<b>EDDY</b>

<sup>12</sup> Dedicated Acres <b>320</b>	<sup>13</sup> Joint or Infill	<sup>14</sup> Consolidation Code	<sup>15</sup> Order No.
---	-------------------------------	----------------------------------	-------------------------

No allowable will be assigned to this completion until all interest have been consolidated or a non-standard unit has been approved by the division.

<p><sup>16</sup> <u>GEODETIC DATA</u> NAD 83 GRID - NM EAST</p> <p><u>SURFACE LOCATION (SL)</u> N: 627003.1 - E: 516606.3 LAT: 32.7236453° N LONG: 104.4137524° W</p> <p><u>KICK OFF POINT (KOP)</u> <u>776' FNL &amp; 532' FEL - SEC 30</u> N: 627127.2 - E: 516350.1 LAT: 32.7239860° N LONG: 104.4145859° W MD = 1778.0 - TVD = 1738.8</p> <p><u>FIRST TAKE POINT (FTP)</u> <u>606' FNL &amp; 170' FWL - SEC 29</u> N: 627296.5 - E: 517054.8 LAT: 32.7244528° N LONG: 104.4122948° W MD = 2982.0 - TVD = 2604.6</p>	<p><u>CORNER DATA</u> NAD 83 GRID - NM EAST</p> <p>A: FOUND 1/2" REBAR W/PLASTIC CAP "ILLEGIBLE" N: 622604.7 - E: 511697.4</p> <p>B: FOUND 3/8" REBAR W/WASHERS "PE 5412 &amp; PS 9242" N: 627906.8 - E: 511762.1</p> <p>C: CALCULATED CORNER N: 627902.6 - E: 516889.4</p> <p>D: CALCULATED CORNER N: 627898.4 - E: 522165.5</p> <p>E: CALCULATED CORNER N: 622625.1 - E: 522141.2</p> <p>F: FOUND 3/8" REBAR N: 622636.0 - E: 519499.8</p> <p>G: FOUND FENCE POST N: 622614.8 - E: 516841.1</p>	<p><sup>17</sup> <b>OPERATOR CERTIFICATION</b> <i>I hereby certify that the information contained herein is true and complete to the best of my knowledge and belief, and that this organization either owns a working interest or unleased mineral interest in the land including the proposed bottom hole location or has a right to drill this well at this location pursuant to a contract with an owner of such a mineral or working interest, or to a voluntary pooling agreement or a compulsory pooling order heretofore entered by the division.</i></p> <p><i>Cynthia Villacorta</i> 8/22/2023 Signature Date</p> <p>Cynthia Villacorta Printed Name</p> <p>cynthia.villacorta@spurenergy.com E-mail Address</p>
		<p><sup>18</sup> <b>SURVEYOR CERTIFICATION</b> <i>I hereby certify that the well location shown on this plat was plotted from field notes of actual surveys made by me or under my supervision, and that the same is true and correct to the best of my belief.</i></p> <p>08/10/2023 Date of Survey</p> <p>Signature and Seal of Professional Surveyor</p> <p><b>14400</b> Certificate Number</p> <p>DALE E. BELL NEW MEXICO PROFESSIONAL SURVEYOR 14400 08/22/2023</p>

Job No.: LS23010091AC



July 26<sup>th</sup> , 2023

State Of New Mexico  
Energy, Minerals and Natural Resources  
Oil Conservation Division  
1220 S St Francis Dr.  
Santa Fe NM 87505

RE: SPUR ENERGY PARTNERS LLC 328947

Well: STROS 29 #20H  
POOLS: (50270) PENASCO DRAW;SA-YESO (ASSOC)  
EDDY COUNTY, NM  
API Number: 30-015-53494

Please find the attached surveys performed on the above referenced well by Prime Solution Services.

Other information required by your office is as follows:

Original Hole:

Surveyed Depths: 150'MD– 7978'MD projection to 8050'MD  
Date Performed: 04/30/2023 – 07/25/2023  
Type of Survey: Directional Survey – MWD/IFR

A certified plat on which the bottom hole location is oriented both to the surface location and the lease lines (or unit lines in case of pooling) is attached to the survey report. If any other information is required, please contact the undersigned at the letterhead address and phone number.

Sincerely,

A handwritten signature in blue ink, appearing to read 'Joe Vocioni', is written over a blue horizontal line.

Joe Vocioni  
MWD Operations Manager

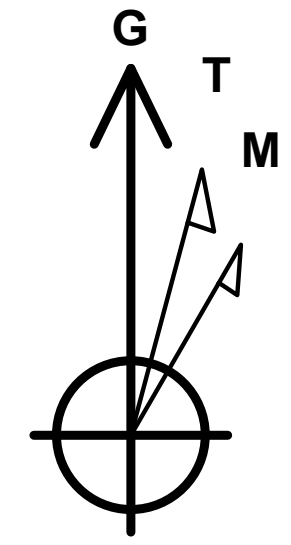
713-517-3120

[jvocioni@primesolutionsvc.com](mailto:jvocioni@primesolutionsvc.com)

# SPUR ENERGY PARTNERS LLC.

**Project:** Eddy County, NM (NAD83) NMEZ Grid  
**Site:** STROS 29  
**Well:** STROS 29 20H  
**Wellbore:** 20H Lateral  
**Design:** 20H Lateral AsDrilled

PROJECT DETAILS: Eddy County, NM (NAD83) NMEZ Grid  
 Geodetic System: US State Plane 1983  
 Datum: North American Datum 1983  
 Ellipsoid: GRS 1980  
 Zone: New Mexico Eastern Zone  
 System Datum: Mean Sea Level



Azimuths to Grid North  
 True North: 0.04°  
 Magnetic North: 6.80°

Magnetic Field  
 Strength: 47509.0nT  
 Dip Angle: 60.31°  
 Date: 02/21/2023  
 Model: USER DEFINED

3441+20 @ 3461.00usft (AKITA57)  
 North American Datum 1983

Magnetic North is 6.80° East of Grid North (Magnetic Convergence)  
 Magnetic North is 6.76° East of True North (Magnetic Declination)

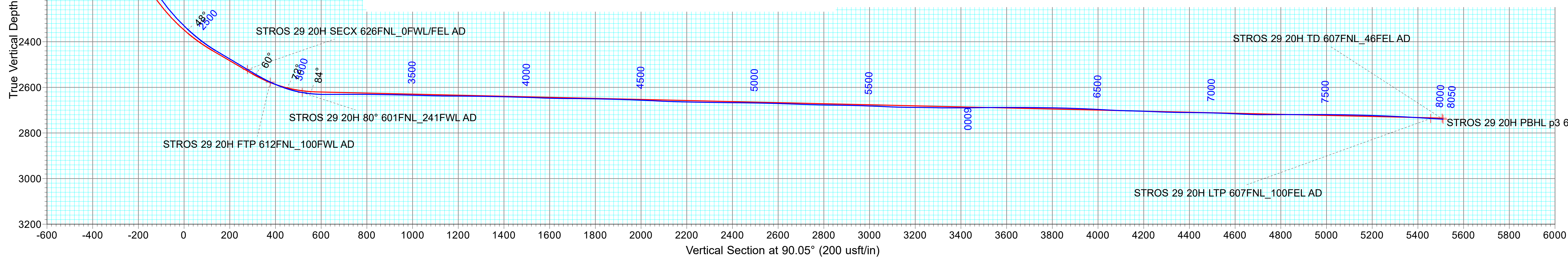
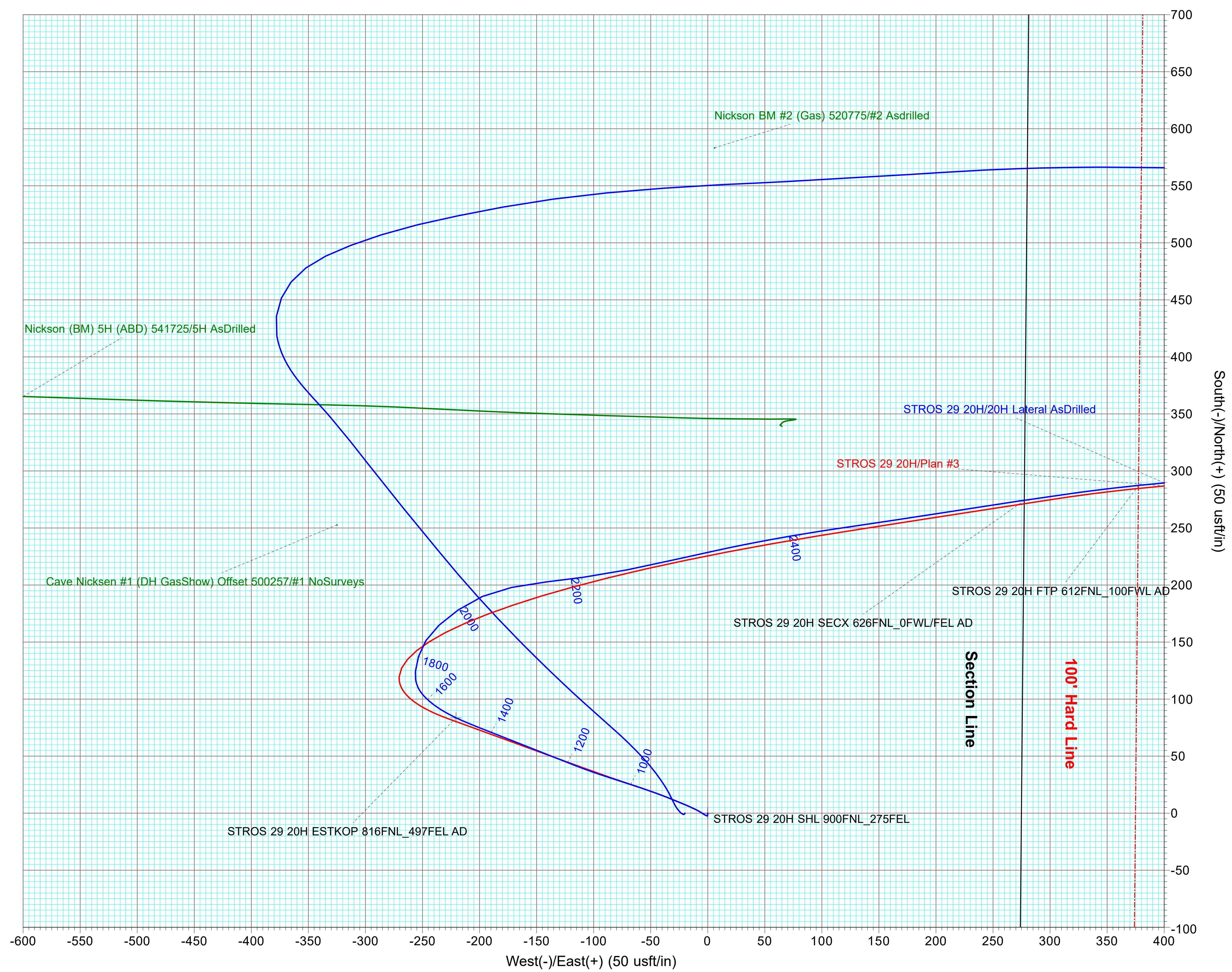
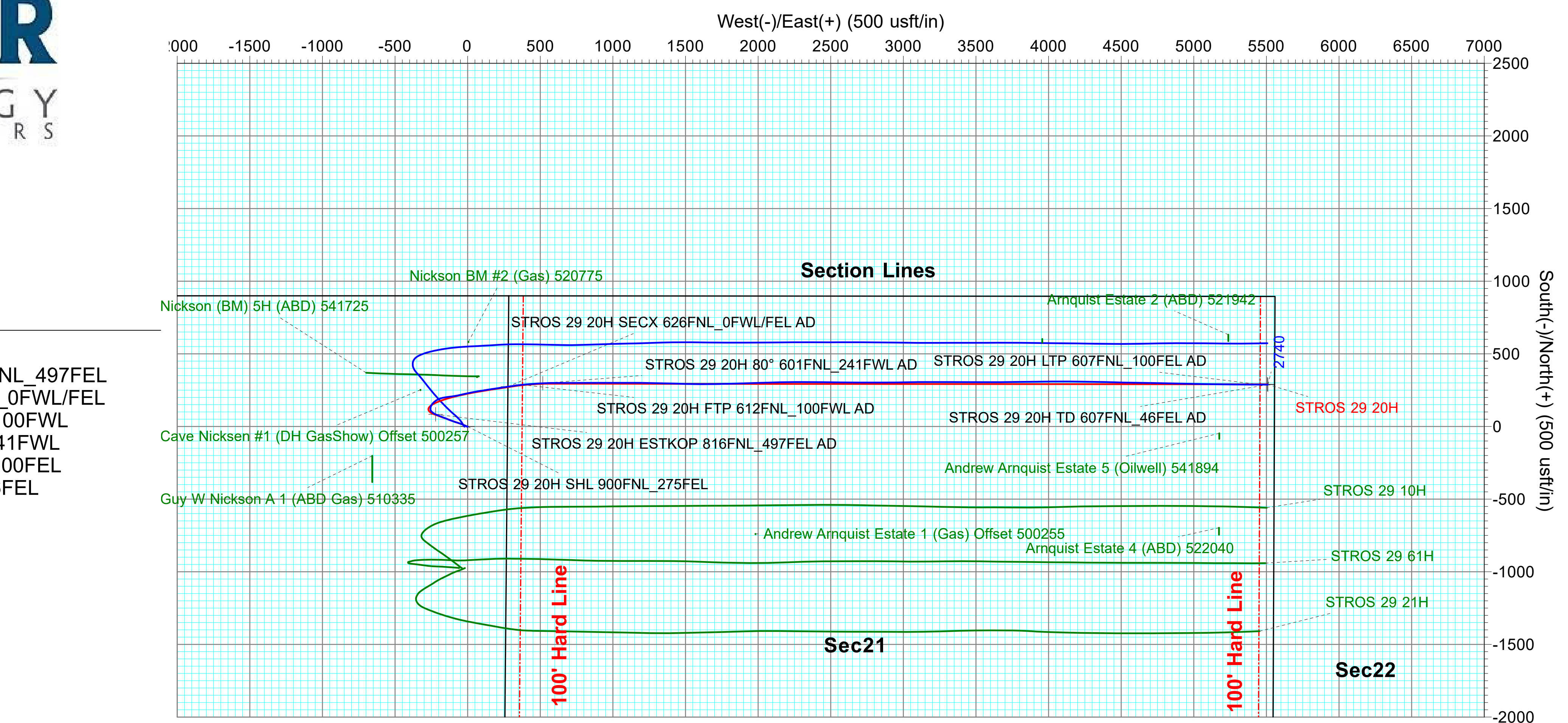
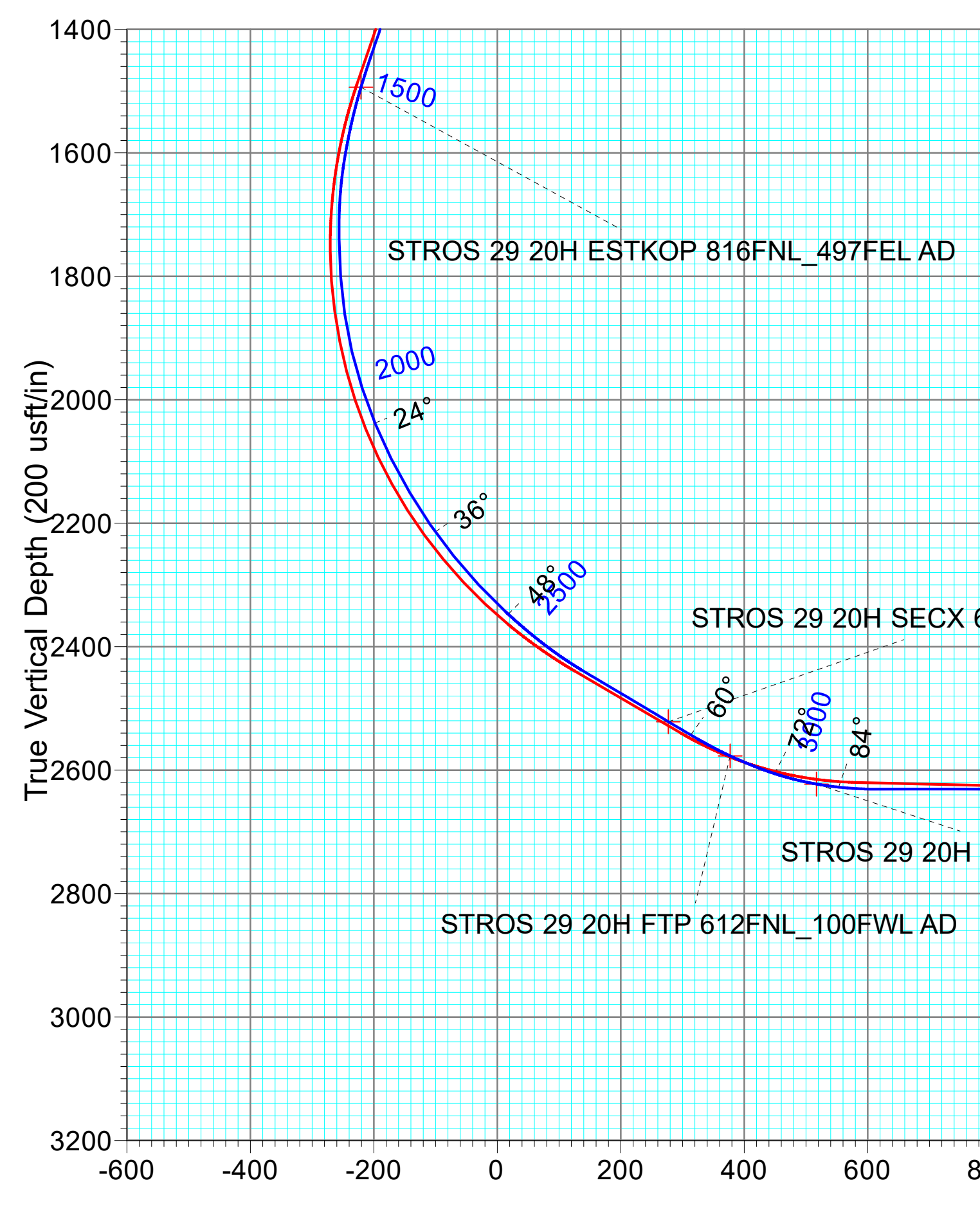
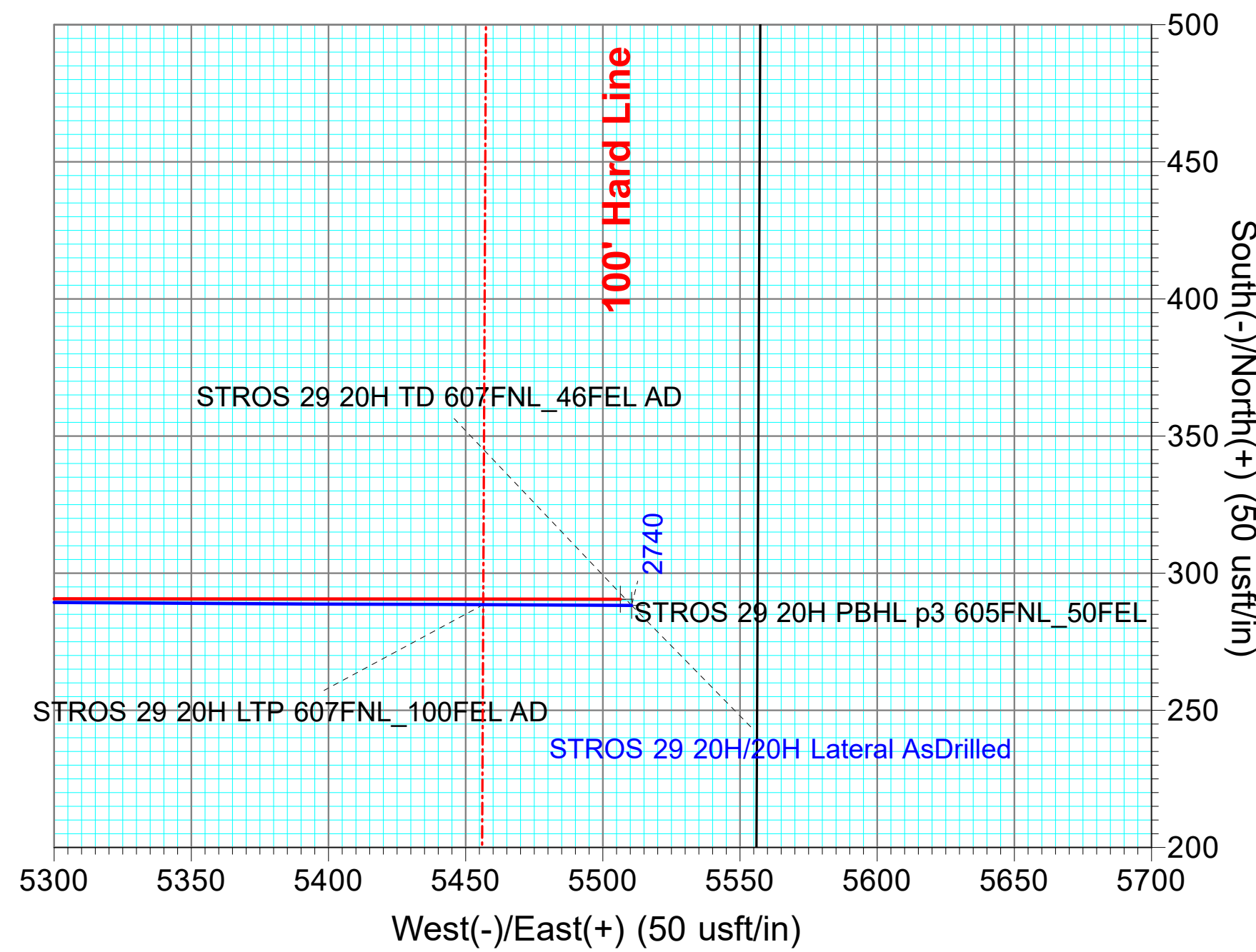
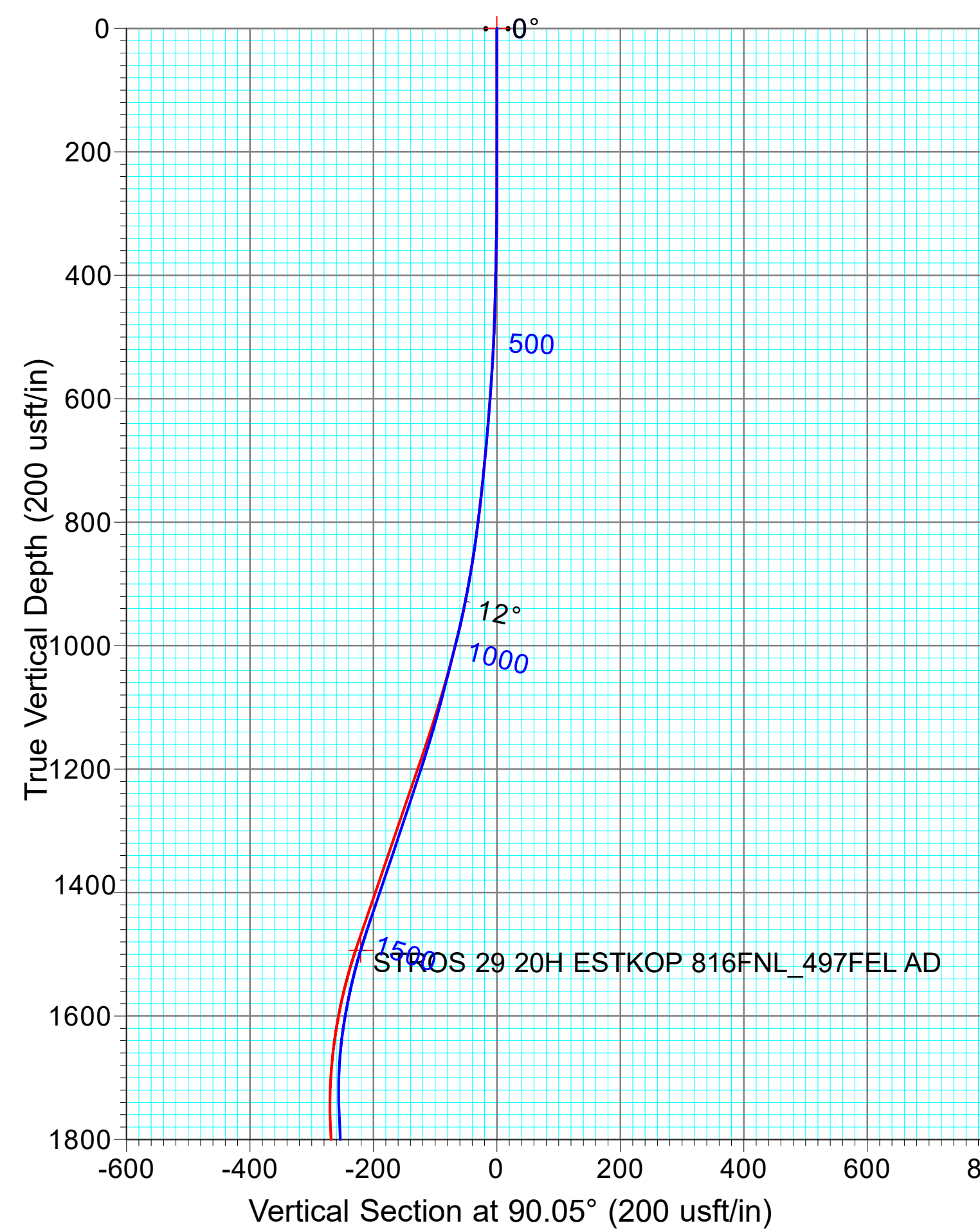
To convert a Magnetic Direction to a Grid Direction, Add 6.80°

### ANNOTATIONS

MD	Inc	Azi	TVD	+N/-S	+E/-W	Annotation
1526.00	18.46	295.24	1493.73	83.68	-220.62	ESTKOP 816FNL_497FEL
2790.70	59.30	81.48	2521.65	274.34	277.44	SECX 626FNL_0FWL/FEL
2906.00	65.05	84.20	2577.09	287.37	377.62	FTP 612FNL_100FWL
3053.80	80.00	87.27	2622.65	297.74	517.37	80° 601FNL_241FWL
7995.80	86.30	90.29	2736.45	288.55	5456.43	LTP 607FNL_100FEL
8050.00	86.30	90.29	2739.95	288.27	5510.52	TD 607FNL_46FEL

### TARGET DETAILS

Name	TVD	+N/-S	+E/-W	Northing	Easting
STROS 29 20H SHL 900FNL_275FEL	0.00	0.01	0.00	627003.100	516606.300
STROS 29 20H ESTKOP 816FNL_497FEL AD	1493.73	83.68	-220.62	627086.769	516385.680
STROS 29 20H SECX 626FNL_0FWL/FEL AD	2521.65	274.34	277.44	627277.434	516883.736
STROS 29 20H FTP 612FNL_100FWL AD	2577.09	287.37	377.62	627290.467	516983.919
STROS 29 20H 80° 601FNL_241FWL AD	2622.65	297.74	517.37	627300.835	517123.666
STROS 29 20H PBHL p3 605FNL_50FEL	2735.00	290.51	5506.40	627293.600	522112.700
STROS 29 20H LTP 607FNL_100FEL AD	2736.45	288.55	5456.43	627291.640	522062.730
STROS 29 20H TD 607FNL_46FEL AD	2739.95	288.27	5510.52	627291.366	522116.816



SPUR ENERGY PARTNERS LLC.  
 Eddy County, NM (NAD83) NMEZ Grid  
 STROS 29  
 20H Lateral AsDrilled  
 Created By: Mekka Williams  
 eSomnia Well Design  
 mekka@esominawell.com

# **SPUR ENERGY PARTNERS LLC.**

**Eddy County, NM (NAD83) NMEZ Grid**

**STROS 29**

**STROS 29 20H**

**20H Lateral**

**Design: 20H Lateral AsDrilled**

## **Standard Survey Report**

**26 July, 2023**

Survey Report

<b>Company:</b>	SPUR ENERGY PARTNERS LLC.	<b>Local Co-ordinate Reference:</b>	Well STROS 29 20H
<b>Project:</b>	Eddy County, NM (NAD83) NMEZ Grid	<b>TVD Reference:</b>	3441+20 @ 3461.00usft (AKITA57)
<b>Site:</b>	STROS 29	<b>MD Reference:</b>	3441+20 @ 3461.00usft (AKITA57)
<b>Well:</b>	STROS 29 20H	<b>North Reference:</b>	Grid
<b>Wellbore:</b>	20H Lateral	<b>Survey Calculation Method:</b>	Minimum Curvature
<b>Design:</b>	20H Lateral AsDrilled	<b>Database:</b>	PRIME_EDM

<b>Project</b>	Eddy County, NM (NAD83) NMEZ Grid		
<b>Map System:</b>	US State Plane 1983	<b>System Datum:</b>	Mean Sea Level
<b>Geo Datum:</b>	North American Datum 1983		
<b>Map Zone:</b>	New Mexico Eastern Zone		

<b>Site</b>	STROS 29				
<b>Site Position:</b>		<b>Northing:</b>	627,003.093 usft	<b>Latitude:</b>	32.7236454
<b>From:</b>	Map	<b>Easting:</b>	516,606.300 usft	<b>Longitude:</b>	-104.4137525
<b>Position Uncertainty:</b>	0.00 usft	<b>Slot Radius:</b>	13-3/16 "	<b>Grid Convergence:</b>	-0.04 °

<b>Well</b>	STROS 29 20H					
<b>Well Position</b>	<b>+N/-S</b>	0.00 usft	<b>Northing:</b>	627,003.093 usft	<b>Latitude:</b>	32.7236454
	<b>+E/-W</b>	0.00 usft	<b>Easting:</b>	516,606.300 usft	<b>Longitude:</b>	-104.4137525
<b>Position Uncertainty</b>		0.00 usft	<b>Wellhead Elevation:</b>	usft	<b>Ground Level:</b>	3,441.00 usft

<b>Wellbore</b>	20H Lateral				
<b>Magnetics</b>	<b>Model Name</b>	<b>Sample Date</b>	<b>Declination (°)</b>	<b>Dip Angle (°)</b>	<b>Field Strength (nT)</b>
	User Defined	02/21/23	6.76	60.31	47,509.00000000

<b>Design</b>	20H Lateral AsDrilled				
<b>Audit Notes:</b>					
<b>Version:</b>	1.0	<b>Phase:</b>	ACTUAL	<b>Tie On Depth:</b>	0.00
<b>Vertical Section:</b>	<b>Depth From (TVD) (usft)</b>	<b>+N/-S (usft)</b>	<b>+E/-W (usft)</b>	<b>Direction (°)</b>	
	0.00	0.00	0.00	90.05	

<b>Survey Program</b>	<b>Date</b>	07/26/23			
<b>From (usft)</b>	<b>To (usft)</b>	<b>Survey (Wellbore)</b>	<b>Tool Name</b>	<b>Description</b>	
150.00	1,062.00	1 - Transcend (20H Lateral)	MWD+SAG+FDIR	OWSG MWD + Sag Correction + FDIR Correction	
1,062.00	7,978.00	Survey #2 (20H Lateral)	MWD+SAG+FDIR	OWSG MWD + Sag Correction + FDIR Correction	
8,050.00	8,050.00	Survey #3 (20H Lateral)	Projection	Projection	

<b>Survey</b>										
<b>Measured Depth (usft)</b>	<b>Inclination (°)</b>	<b>Azimuth (°)</b>	<b>Vertical Depth (usft)</b>	<b>+N/-S (usft)</b>	<b>+E/-W (usft)</b>	<b>Vertical Section (usft)</b>	<b>Dogleg Rate (°/100usft)</b>	<b>Build Rate (°/100usft)</b>	<b>Turn Rate (°/100usft)</b>	
0.00	0.00	0.00	0.00	0.00	0.00	0.00	0.00	0.00	0.00	0.00
150.00	0.60	183.70	150.00	-0.78	-0.05	-0.05	0.40	0.40	0.00	0.00
203.00	0.60	184.90	202.99	-1.34	-0.09	-0.09	0.02	0.00	2.26	
263.00	0.60	182.60	262.99	-1.96	-0.13	-0.13	0.04	0.00	-3.83	
357.00	1.10	280.20	356.98	-2.30	-1.04	-1.04	1.41	0.53	103.83	
452.00	2.00	308.80	451.95	-1.10	-3.23	-3.23	1.22	0.95	30.11	
546.00	4.00	299.10	545.82	1.53	-7.38	-7.38	2.19	2.13	-10.32	
641.00	5.30	294.60	640.50	4.96	-14.26	-14.27	1.42	1.37	-4.74	
735.00	6.30	292.10	734.02	8.71	-22.99	-23.00	1.10	1.06	-2.66	

Survey Report

<b>Company:</b>	SPUR ENERGY PARTNERS LLC.	<b>Local Co-ordinate Reference:</b>	Well STROS 29 20H
<b>Project:</b>	Eddy County, NM (NAD83) NMEZ Grid	<b>TVD Reference:</b>	3441+20 @ 3461.00usft (AKITA57)
<b>Site:</b>	STROS 29	<b>MD Reference:</b>	3441+20 @ 3461.00usft (AKITA57)
<b>Well:</b>	STROS 29 20H	<b>North Reference:</b>	Grid
<b>Wellbore:</b>	20H Lateral	<b>Survey Calculation Method:</b>	Minimum Curvature
<b>Design:</b>	20H Lateral AsDrilled	<b>Database:</b>	PRIME_EDM

Survey									
Measured Depth (usft)	Inclination (°)	Azimuth (°)	Vertical Depth (usft)	+N/-S (usft)	+E/-W (usft)	Vertical Section (usft)	Dogleg Rate (°/100usft)	Build Rate (°/100usft)	Turn Rate (°/100usft)
829.00	8.40	292.30	827.24	13.26	-34.12	-34.13	2.23	2.23	0.21
924.00	11.70	289.30	920.77	19.08	-49.64	-49.65	3.52	3.47	-3.16
999.00	14.70	288.40	993.78	24.60	-65.85	-65.87	4.01	4.00	-1.20
1,091.00	15.31	287.72	1,082.65	31.98	-88.49	-88.52	0.69	0.66	-0.74
1,216.00	19.47	291.72	1,201.91	44.72	-123.58	-123.62	3.46	3.33	3.20
1,342.00	19.77	291.47	1,320.59	60.29	-162.92	-162.97	0.25	0.24	-0.20
1,468.00	20.21	291.55	1,439.00	76.08	-202.99	-203.06	0.35	0.35	0.06
1,526.00	18.46	295.24	1,493.73	83.68	-220.62	-220.69	3.68	-3.02	6.36
1,588.00	15.18	303.82	1,553.08	92.38	-236.25	-236.33	6.62	-5.29	13.84
1,651.00	12.85	315.83	1,614.21	102.00	-247.99	-248.08	5.90	-3.70	19.06
1,714.00	10.46	340.32	1,675.95	112.42	-254.80	-254.90	8.63	-3.79	38.87
1,778.00	11.26	4.98	1,738.83	124.12	-256.21	-256.32	7.31	1.25	38.53
1,841.00	13.72	16.99	1,800.35	137.40	-253.50	-253.62	5.66	3.90	19.06
1,904.00	14.91	32.32	1,861.41	151.40	-246.98	-247.11	6.29	1.89	24.33
1,967.00	18.08	47.57	1,921.84	164.85	-235.42	-235.56	8.48	5.03	24.21
2,030.00	21.66	54.59	1,981.09	178.19	-218.72	-218.88	6.82	5.68	11.14
2,093.00	24.06	66.77	2,039.17	190.00	-197.43	-197.59	8.40	3.81	19.33
2,155.00	27.24	78.05	2,095.09	197.93	-171.91	-172.08	9.38	5.13	18.19
2,218.00	30.70	83.63	2,150.21	202.70	-141.81	-141.98	6.96	5.49	8.86
2,280.00	34.96	82.08	2,202.29	206.91	-108.47	-108.65	7.00	6.87	-2.50
2,344.00	39.54	78.70	2,253.23	213.43	-70.31	-70.49	7.84	7.16	-5.28
2,406.00	43.59	77.21	2,299.61	222.03	-30.09	-30.29	6.72	6.53	-2.40
2,469.00	47.66	78.02	2,343.66	231.68	13.88	13.68	6.53	6.46	1.29
2,532.00	51.49	79.83	2,384.51	240.87	60.94	60.73	6.46	6.08	2.87
2,595.00	56.38	81.47	2,421.58	249.12	111.18	110.96	8.04	7.76	2.60
2,626.00	59.32	81.63	2,438.08	252.97	137.13	136.91	9.49	9.48	0.52
2,658.00	59.72	81.37	2,454.31	257.05	164.41	164.18	1.43	1.25	-0.81
2,689.00	59.72	81.33	2,469.94	261.08	190.88	190.65	0.11	0.00	-0.13
2,720.00	59.56	81.15	2,485.61	265.15	217.31	217.08	0.72	-0.52	-0.58
2,752.00	59.36	81.33	2,501.87	269.35	244.55	244.32	0.79	-0.63	0.56
2,783.00	59.17	81.37	2,517.71	273.35	270.89	270.66	0.62	-0.61	0.13
2,846.00	60.21	82.24	2,549.51	281.10	324.73	324.48	2.04	1.65	1.38
2,908.00	65.21	84.26	2,577.93	287.56	379.42	379.17	8.57	8.06	3.26
2,971.00	70.52	85.62	2,601.66	292.69	437.53	437.28	8.66	8.43	2.16
3,035.00	77.92	86.74	2,619.05	296.78	498.94	498.68	11.68	11.56	1.75
3,097.00	84.78	88.45	2,628.37	299.34	560.14	559.88	11.40	11.06	2.76
3,159.00	90.36	89.74	2,631.00	300.32	622.05	621.79	9.24	9.00	2.08
3,222.00	90.17	89.95	2,630.71	300.49	685.05	684.79	0.45	-0.30	0.33
3,348.00	89.44	90.18	2,631.14	300.34	811.05	810.79	0.61	-0.58	0.18
3,474.00	88.85	89.88	2,633.02	300.28	937.04	936.77	0.53	-0.47	-0.24
3,599.00	88.32	89.26	2,636.10	301.22	1,061.99	1,061.73	0.65	-0.42	-0.50
3,725.00	89.66	91.08	2,638.32	300.84	1,187.97	1,187.70	1.79	1.06	1.44
3,849.00	89.16	91.25	2,639.60	298.32	1,311.93	1,311.67	0.43	-0.40	0.14

Survey Report

<b>Company:</b>	SPUR ENERGY PARTNERS LLC.	<b>Local Co-ordinate Reference:</b>	Well STROS 29 20H
<b>Project:</b>	Eddy County, NM (NAD83) NMEZ Grid	<b>TVD Reference:</b>	3441+20 @ 3461.00usft (AKITA57)
<b>Site:</b>	STROS 29	<b>MD Reference:</b>	3441+20 @ 3461.00usft (AKITA57)
<b>Well:</b>	STROS 29 20H	<b>North Reference:</b>	Grid
<b>Wellbore:</b>	20H Lateral	<b>Survey Calculation Method:</b>	Minimum Curvature
<b>Design:</b>	20H Lateral AsDrilled	<b>Database:</b>	PRIME_EDM

Survey										
Measured Depth (usft)	Inclination (°)	Azimuth (°)	Vertical Depth (usft)	+N/-S (usft)	+E/-W (usft)	Vertical Section (usft)	Dogleg Rate (°/100usft)	Build Rate (°/100usft)	Turn Rate (°/100usft)	
3,974.00	88.43	91.46	2,642.23	295.37	1,436.87	1,436.61	0.61	-0.58	0.17	
4,099.00	87.76	91.45	2,646.39	292.19	1,561.76	1,561.50	0.54	-0.54	-0.01	
4,224.00	89.75	88.90	2,649.10	291.81	1,686.71	1,686.46	2.59	1.59	-2.04	
4,349.00	88.82	88.73	2,650.66	294.40	1,811.67	1,811.42	0.76	-0.74	-0.14	
4,475.00	88.12	88.28	2,654.03	297.68	1,937.59	1,937.32	0.66	-0.56	-0.36	
4,601.00	87.03	87.58	2,659.36	302.23	2,063.39	2,063.12	1.03	-0.87	-0.56	
4,727.00	88.85	89.53	2,663.89	305.40	2,189.25	2,188.99	2.12	1.44	1.55	
4,852.00	89.10	89.92	2,666.12	306.00	2,314.23	2,313.97	0.37	0.20	0.31	
4,978.00	89.47	90.83	2,667.69	305.18	2,440.22	2,439.95	0.78	0.29	0.72	
5,104.00	88.46	90.58	2,669.97	303.63	2,566.19	2,565.92	0.83	-0.80	-0.20	
5,230.00	87.81	90.04	2,674.07	302.95	2,692.12	2,691.85	0.67	-0.52	-0.43	
5,355.00	89.13	89.99	2,677.41	302.91	2,817.07	2,816.80	1.06	1.06	-0.04	
5,482.00	88.51	89.52	2,680.02	303.46	2,944.04	2,943.78	0.61	-0.49	-0.37	
5,607.00	87.23	88.68	2,684.67	305.42	3,068.94	3,068.67	1.22	-1.02	-0.67	
5,725.00	89.58	90.27	2,687.95	306.50	3,186.87	3,186.60	2.40	1.99	1.35	
5,844.00	88.77	90.03	2,689.67	306.19	3,305.86	3,305.59	0.71	-0.68	-0.20	
5,964.00	91.09	90.58	2,689.81	305.55	3,425.85	3,425.58	1.99	1.93	0.46	
6,084.00	90.31	89.94	2,688.35	305.00	3,545.84	3,545.57	0.84	-0.65	-0.53	
6,204.00	89.80	89.75	2,688.23	305.33	3,665.84	3,665.57	0.45	-0.43	-0.16	
6,323.00	88.96	89.07	2,689.52	306.55	3,784.82	3,784.55	0.91	-0.71	-0.57	
6,443.00	88.04	89.38	2,692.66	308.18	3,904.77	3,904.50	0.81	-0.77	0.26	
6,563.00	86.61	89.16	2,698.26	309.70	4,024.62	4,024.35	1.21	-1.19	-0.18	
6,682.00	88.57	90.73	2,703.27	309.82	4,143.51	4,143.24	2.11	1.65	1.32	
6,802.00	87.50	90.57	2,707.38	308.46	4,263.43	4,263.16	0.90	-0.89	-0.13	
6,927.00	89.66	91.68	2,710.48	306.00	4,388.36	4,388.09	1.94	1.73	0.89	
7,052.00	88.29	91.23	2,712.71	302.83	4,513.29	4,513.03	1.15	-1.10	-0.36	
7,178.00	87.17	90.57	2,717.71	300.85	4,639.18	4,638.91	1.03	-0.89	-0.52	
7,305.00	90.64	91.50	2,720.13	298.56	4,766.11	4,765.85	2.83	2.73	0.73	
7,431.00	90.14	91.07	2,719.27	295.73	4,892.08	4,891.82	0.52	-0.40	-0.34	
7,556.00	89.58	91.23	2,719.58	293.22	5,017.05	5,016.79	0.47	-0.45	0.13	
7,682.00	88.51	90.84	2,721.68	290.95	5,143.01	5,142.75	0.90	-0.85	-0.31	
7,808.00	87.48	90.50	2,726.09	289.47	5,268.92	5,268.67	0.86	-0.82	-0.27	
7,934.00	86.61	90.12	2,732.58	288.79	5,394.75	5,394.50	0.75	-0.69	-0.30	
7,978.00	86.30	90.29	2,735.30	288.64	5,438.67	5,438.41	0.80	-0.70	0.39	
8,050.00	86.30	90.29	2,739.95	288.27	5,510.52	5,510.26	0.00	0.00	0.00	

Survey Report

<b>Company:</b>	SPUR ENERGY PARTNERS LLC.	<b>Local Co-ordinate Reference:</b>	Well STROS 29 20H
<b>Project:</b>	Eddy County, NM (NAD83) NMEZ Grid	<b>TVD Reference:</b>	3441+20 @ 3461.00usft (AKITA57)
<b>Site:</b>	STROS 29	<b>MD Reference:</b>	3441+20 @ 3461.00usft (AKITA57)
<b>Well:</b>	STROS 29 20H	<b>North Reference:</b>	Grid
<b>Wellbore:</b>	20H Lateral	<b>Survey Calculation Method:</b>	Minimum Curvature
<b>Design:</b>	20H Lateral AsDrilled	<b>Database:</b>	PRIME_EDM

Design Targets										
Target Name	Dip Angle	Dip Dir.	TVD	+N/-S	+E/-W	Northing	Easting	Latitude	Longitude	
- hit/miss target	(°)	(°)	(usft)	(usft)	(usft)	(usft)	(usft)			
- Shape										
STROS 29 20H SHL 90(	0.00	0.00	0.00	0.01	0.00	627,003.100	516,606.300	32.7236454	-104.4137525	
- actual wellpath misses target center by 0.01usft at 0.00usft MD (0.00 TVD, 0.00 N, 0.00 E)										
- Point										
STROS 29 20H ESTKOI	0.00	0.00	1,493.73	83.68	-220.62	627,086.769	516,385.680	32.7238749	-104.4144701	
- actual wellpath hits target center										
- Point										
STROS 29 20H SECX 6	0.00	0.00	2,521.65	274.34	277.44	627,277.434	516,883.736	32.7244001	-104.4128510	
- actual wellpath hits target center										
- Point										
STROS 29 20H FTP 612	0.00	0.00	2,577.09	287.37	377.62	627,290.467	516,983.919	32.7244361	-104.4125252	
- actual wellpath hits target center										
- Point										
STROS 29 20H 80° 601	0.00	360.00	2,622.65	297.74	517.37	627,300.835	517,123.666	32.7244649	-104.4120708	
- actual wellpath misses target center by 0.01usft at 3053.79usft MD (2622.65 TVD, 297.74 N, 517.36 E)										
- Point										
STROS 29 20H PBHL p:	0.00	360.00	2,735.00	290.51	5,506.40	627,293.600	522,112.700	32.7244541	-104.3958477	
- actual wellpath misses target center by 5.17usft at 8045.56usft MD (2739.66 TVD, 288.30 N, 5506.09 E)										
- Point										
STROS 29 20H TD 607f	0.00	360.00	2,739.95	288.27	5,510.52	627,291.366	522,116.816	32.7244480	-104.3958343	
- actual wellpath hits target center										
- Point										
STROS 29 20H ltsv	0.00	0.00	7,978.00	288.64	5,438.67	627,291.733	522,044.970	32.7244489	-104.3960679	
- actual wellpath misses target center by 5238.54usft at 8050.00usft MD (2739.95 TVD, 288.27 N, 5510.52 E)										
- Point										

Design Annotations					
Measured Depth	Vertical Depth	Local Coordinates		Comment	
(usft)	(usft)	+N/-S	+E/-W		
		(usft)	(usft)		
1,526.00	1,493.73	83.68	-220.62	ESTKOP 816FNL_497FEL	
2,790.70	2,521.65	274.34	277.44	SECX 626FNL_0FWL/FEL	
2,906.00	2,577.09	287.37	377.62	FTP 612FNL_100FWL	
3,053.80	2,622.65	297.74	517.37	80° 601FNL_241FWL	
7,995.80	2,736.45	288.55	5,456.43	LTP 607FNL_100FEL	
8,050.00	2,739.95	288.27	5,510.52	TD 607FNL_46FEL	

Checked By: \_\_\_\_\_ Approved By: \_\_\_\_\_ Date: \_\_\_\_\_

District I  
1625 N. French Dr., Hobbs, NM 88240  
Phone: (575) 393-6161 Fax: (575) 393-0720  
District II  
811 S. First St., Artesia, NM 88210  
Phone: (575) 748-1283 Fax: (575) 748-9720  
District III  
1000 Rio Brazos Road, Aztec, NM 87410  
Phone: (505) 334-6178 Fax: (505) 334-6170  
District IV  
1220 S. St. Francis Dr., Santa Fe, NM 87505  
Phone: (505) 476-3460 Fax: (505) 476-3462

State of New Mexico  
Energy, Minerals & Natural Resources Department  
OIL CONSERVATION DIVISION  
1220 South St. Francis Dr.  
Santa Fe, NM 87505

Form C-102  
Revised August 1, 2011  
Submit one copy to appropriate  
District Office

AMENDED REPORT

WELL LOCATION AND ACREAGE DEDICATION PLAT

1 API Number		2 Pool Code		3 Pool Name		
4 Property Code		5 Property Name <b>STROS 29</b>			6 Well Number <b>20H</b>	
7 OGRID NO.		8 Operator Name <b>SPUR ENERGY PARTNERS LLC.</b>			9 Elevation <b>3441</b>	

10 Surface Location

UL or lot no.	Section	Township	Range	Lot Idn	Feet from the	North/South line	Feet From the	East/West line	County
<b>A</b>	<b>30</b>	<b>18S</b>	<b>26E</b>		<b>900</b>	<b>NORTH</b>	<b>275</b>	<b>EAST</b>	<b>EDDY</b>

11 Bottom Hole Location If Different From Surface

UL or lot no.	Section	Township	Range	Lot Idn	Feet from the	North/South line	Feet from the	East/West line	County
<b>A</b>	<b>29</b>	<b>18S</b>	<b>26E</b>		<b>605</b>	<b>NORTH</b>	<b>50</b>	<b>EAST</b>	<b>EDDY</b>

12 Dedicated Acres	13 Joint or Infill	14 Consolidation Code	15 Order No.
--------------------	--------------------	-----------------------	--------------

No allowable will be assigned to this completion until all interest have been consolidated or a non-standard unit has been approved by the division.

<p>16</p> <p><u>GEODETIC DATA</u> NAD 83 GRID - NM EAST</p> <p><u>SURFACE LOCATION (SL)</u> N: 627003.1 - E: 516606.3 LAT: 32.7236453° N LONG: 104.4137524° W</p> <p><u>FIRST TAKE POINT (FTP)</u> 605' FNL &amp; 100' FWL - SEC 29 N: 627297.7 - E: 516983.9 LAT: 32.7244560° N LONG: 104.4125254° W</p> <p><u>LAST TAKE POINT (LTP)</u> 605' FNL &amp; 100' FEL - SEC 29 N: 627293.6 - E: 522062.7 LAT: 32.7244541° N LONG: 104.3960102° W</p> <p><u>BOTTOM HOLE (BH)</u> N: 627293.6 - E: 522112.7 LAT: 32.7244540° N LONG: 104.3958476° W</p>	<p><u>CORNER DATA</u> NAD 83 GRID - NM EAST</p> <p>A: FOUND 1/2" REBAR W/PLASTIC CAP "ILLEGIBLE" N: 622604.7 - E: 511697.4</p> <p>B: FOUND 3/8" REBAR W/WASHERS "PE 5412 &amp; PS 9242" N: 627906.8 - E: 511762.1</p> <p>C: CALCULATED CORNER N: 627902.6 - E: 516889.4</p> <p>D: CALCULATED CORNER N: 627898.4 - E: 522165.5</p> <p>E: CALCULATED CORNER N: 622625.1 - E: 522141.2</p> <p>F: FOUND 3/8" REBAR N: 622636.0 - E: 519499.8</p> <p>G: FOUND FENCE POST N: 622614.8 - E: 516841.1</p>	<p>17 OPERATOR CERTIFICATION</p> <p>I hereby certify that the information contained herein is true and complete to the best of my knowledge and belief, and that this organization either owns a working interest or unleased mineral interest in the land including the proposed bottom hole location or has a right to drill this well at this location pursuant to a contract with an owner of such a mineral or working interest, or to a voluntary pooling agreement or a compulsory pooling order heretofore entered by the division.</p> <p>Signature _____ Date _____</p> <p>Printed Name _____</p> <p>E-mail Address _____</p>
		<p>18 SURVEYOR CERTIFICATION</p> <p>I hereby certify that the well location shown on this plat was plotted from field notes of actual surveys made by me or under my supervision, and that the same is true and correct to the best of my belief.</p> <p><b>01/30/2023</b> Date of Survey</p> <p>Signature and Seal of Professional Surveyor: <b>DALE E. BELL</b> NEW MEXICO 14400 02/03/2023 PROFESSIONAL SURVEYOR</p>
<p>Bottom Hole Location: Prime Solution Services MWD Original hole: Final Station 7978 MD Displacement = 5446.32' at a 86.96 Azimuth API # 30-015-53494</p>		<p>100 Date Number</p>

Job No.: LS23010091

<b>District I</b> 1625 N. French Dr., Hobbs, NM 88240 Phone:(575) 393-6161 Fax:(575) 393-0720 <b>District II</b> 811 S. First St., Artesia, NM 88210 Phone:(575) 748-1283 Fax:(575) 748-9720 <b>District III</b> 1000 Rio Brazos Rd., Aztec, NM 87410 Phone:(505) 334-6178 Fax:(505) 334-6170 <b>District IV</b> 1220 S. St Francis Dr., Santa Fe, NM 87505 Phone:(505) 476-3470 Fax:(505) 476-3462	<b>State of New Mexico</b> <b>Energy, Minerals and Natural Resources</b> <b>Oil Conservation Division</b> <b>1220 S. St Francis Dr.</b> <b>Santa Fe, NM 87505</b>	Form C-103 August 1, 2011 Permit 349442 WELL API NUMBER 30-015-53494 5. Indicate Type of Lease Private 6. State Oil & Gas Lease No. 7. Lease Name or Unit Agreement Name STROS 29					
<b>SUNDRY NOTICES AND REPORTS ON WELLS</b> (DO NOT USE THIS FORM FOR PROPOSALS TO DRILL OR TO DEEPEN OR PLUG BACK TO A DIFFERENT RESERVOIR. USE "APPLICATION FOR PERMIT" (FORM C-101) FOR SUCH PROPOSALS.)		8. Well Number 020H 9. OGRID Number 328947 10. Pool name or Wildcat					
1. Type of Well: Oil 2. Name of Operator Spur Energy Partners LLC 3. Address of Operator 9655 Katy Freeway, Suite 500, Houston, TX 77024 4. Well Location Unit Letter <u>A</u> : <u>900</u> feet from the <u>N</u> line and feet <u>275</u> from the <u>E</u> line Section <u>30</u> Township <u>18S</u> Range <u>26E</u> NMPM _____ County <u>Eddy</u>							
11. Elevation (Show whether DR, KB, BT, GR, etc.) 3441 GR							
Pit or Below-grade Tank Application <input type="checkbox"/> or Closure <input type="checkbox"/> Pit Type _____ Depth to Groundwater _____ Distance from nearest fresh water well _____ Distance from nearest surface water _____ Pit Liner Thickness: _____ mil Below-Grade Tank: Volume _____ bbls; Construction Material _____							
12. Check Appropriate Box to Indicate Nature of Notice, Report or Other Data NOTICE OF INTENTION TO: PERFORM REMEDIAL WORK <input type="checkbox"/> PLUG AND ABANDON <input type="checkbox"/> TEMPORARILY ABANDON <input type="checkbox"/> CHANGE OF PLANS <input type="checkbox"/> PULL OR ALTER CASING <input type="checkbox"/> MULTIPLE COMPL <input type="checkbox"/> Other: _____ SUBSEQUENT REPORT OF: REMEDIAL WORK <input type="checkbox"/> ALTER CASING <input type="checkbox"/> COMMENCE DRILLING OPNS. <input type="checkbox"/> PLUG AND ABANDON <input type="checkbox"/> CASING/CEMENT JOB <input type="checkbox"/> Other: <u>Perforations/Tubing</u> <input checked="" type="checkbox"/>							
13. Describe proposed or completed operations. (Clearly state all pertinent details, and give pertinent dates, including estimated date of starting any proposed work.) SEE RULE 1103. For Multiple Completions: Attach wellbore diagram of proposed completion or recompletion. 08/05/2023 RIH & cleanout to PBTD @ 8004'. RIH & perf from 2982'-7980', total shots 900/ft @ 0.42 shot size. Frac in 25 stages w/ 11994738gal slickwater and 5014760# sand. 08/10/2023 rig down wireline and cleanout.							
<b>Perforations</b>							
<b>Pool: PENASCO DRAW; SA-YESO (ASSOC) , 50270 Location: A -29-18S-26E 605 N 50 E</b>							
TOP	BOT	Open Hole	Shots/ft	Shot Size	Material	Stimulation	Amount
2982	7980	N	6	0.42	Sand/Water	Frac	0
<b>Tubing</b>							
<b>PENASCO DRAW;SA-YESO (ASSOC) , 50270</b>							
Tubing Size	Type	Depth Set	Packer Set				
3.5	J-55	2769	0				
I hereby certify that the information above is true and complete to the best of my knowledge and belief. I further certify that any pit or below-grade tank has been/will be constructed or closed according to NMOCD guidelines <input type="checkbox"/> , a general permit <input type="checkbox"/> or an (attached) alternative OCD-approved plan <input type="checkbox"/> .							
SIGNATURE	<u>Electronically Signed</u>	TITLE	<u>Regulatory Director</u>	DATE	<u>9/1/2023</u>		
Type or print name	<u>Sarah Chapman</u>	E-mail address	<u>schapman@spurenergy.com</u>	Telephone No.	<u>832-930-8613</u>		
<b>For State Use Only:</b>							
APPROVED BY:	<u>Patricia L. Martinez</u>	TITLE	_____	DATE	<u>10/5/2023 9:47:57 AM</u>		

Submit To Appropriate District Office Two Copies District I 1625 N. French Dr., Hobbs, NM 88240 District II 811 S. First St., Artesia, NM 88210 District III 1000 Rio Brazos Rd., Aztec, NM 87410 District IV 1220 S. St. Francis Dr., Santa Fe, NM 87505		State of New Mexico Energy, Minerals and Natural Resources  Oil Conservation Division 1220 South St. Francis Dr. Santa Fe, NM 87505				Form C-105 Revised April 3, 2017				
		1. WELL API NO.		30-015-53494		2. Type of Lease		<input type="checkbox"/> STATE <input checked="" type="checkbox"/> FEE <input type="checkbox"/> FED/INDIAN		
		3. State Oil & Gas Lease No.				4. Reason for filing:		5. Lease Name or Unit Agreement Name		
		<input checked="" type="checkbox"/> <b>COMPLETION REPORT</b> (Fill in boxes #1 through #31 for State and Fee wells only)				<input type="checkbox"/> <b>C-144 CLOSURE ATTACHMENT</b> (Fill in boxes #1 through #9, #15 Date Rig Released and #32 and/or #33; attach this and the plat to the C-144 closure report in accordance with 19.15.17.13.K NMAC)		STROS 29		
		6. Well Number:		20H		7. Type of Completion:		<input checked="" type="checkbox"/> NEW WELL <input type="checkbox"/> WORKOVER <input type="checkbox"/> DEEPENING <input type="checkbox"/> PLUGBACK <input type="checkbox"/> DIFFERENT RESERVOIR <input type="checkbox"/> OTHER		
8. Name of Operator		SPUR ENERGY PARTNERS LLC		9. OGRID		328947		10. Address of Operator		
								9655 KATY FREEWAY, SUITE 500, HOUSTON, TX 77024		
								11. Pool name or Wildcat		
								PENASCO DRAW; SA-YESO (ASSOC)		
12. Location	Unit Ltr	Section	Township	Range	Lot	Feet from the	N/S Line	Feet from the	E/W Line	County
Surface:	A	30	18S	26E		900	NORTH	275	EAST	EDDY
BH:	A	29	18S	26E		607	NORTH	45	EAST	EDDY
13. Date Spudded	14. Date T.D. Reached	15. Date Rig Released		16. Date Completed (Ready to Produce)		17. Elevations (DF and RKB, RT, GR, etc.)		3441' GR		
04/30/2023	07/25/2023	07/27/2023		08/15/2023						
18. Total Measured Depth of Well		19. Plug Back Measured Depth		20. Was Directional Survey Made?		21. Type Electric and Other Logs Run		GAMMA RAY		
8050'M/2740'V		8004'M/2740'V		YES						
22. Producing Interval(s), of this completion - Top, Bottom, Name		2982'-7980'		LOWER PADDOCK						
<b>23. CASING RECORD (Report all strings set in well)</b>										
CASING SIZE		WEIGHT LB./FT.		DEPTH SET		HOLE SIZE		CEMENTING RECORD		AMOUNT PULLED
9-5/8"		36#		1048'		12-1/4"		545 SXS (CIRC TO SURFACE)		0
7"		32#		2916'		8-3/4"		1520 SXS (CIRC TO SURFACE)		0
5-1/2"		20#		8050'		8-3/4"		1520 SXS (CIRC TO SURFACE)		0
<b>24. LINER RECORD</b>										
SIZE		TOP		BOTTOM		SACKS CEMENT		SCREEN		
<b>25. TUBING RECORD</b>										
SIZE		DEPTH SET		PACKER SET						
3-1/2" J-55		2769'								
26. Perforation record (interval, size, and number)		27. ACID, SHOT, FRACTURE, CEMENT, SQUEEZE, ETC.								
RIH & cleanout to PBTD @ 8004'. RIH & perf from 2982'-7980', total shots 900/ft @ 0.42 shot size. Frac in 25 stages w/ 11994738 gal slickwater and 8014760# sand. 08/10/2023 rig down wireline and cleanout. RIH w/ 3-1/2" J-55 tbg @ 2769'.		DEPTH INTERVAL		AMOUNT AND KIND MATERIAL USED						
		2982'-7980'		11994738 gal slickwater and 8014760# sand						
<b>28. PRODUCTION</b>										
Date First Production		Production Method (Flowing, gas lift, pumping - Size and type pump)				Well Status (Prod. or Shut-in)				
09/01/2023		PUMPING ON ESP				PRODUCING				
Date of Test	Hours Tested	Choke Size	Prod'n For Test Period	Oil - Bbl	Gas - MCF	Water - Bbl.	Gas - Oil Ratio			
11/10/2023	24	NA		474	1030	3180				
Flow Tubing Press.	Casing Pressure	Calculated 24-Hour Rate	Oil - Bbl.	Gas - MCF	Water - Bbl.	Oil Gravity - API - (Corr.)				
198	104		474	1030	3180					
29. Disposition of Gas (Sold, used for fuel, vented, etc.)		SOLD		30. Test Witnessed By		JERRY MATHEWS				
31. List Attachments										
WBD, FINAL C-104, AS-DRILLED PLAT AND FINAL DIRECTIONAL										
32. If a temporary pit was used at the well, attach a plat with the location of the temporary pit.		33. Rig Release Date:								
34. If an on-site burial was used at the well, report the exact location of the on-site burial:										
		Latitude		Longitude		NAD83				
I hereby certify that the information shown on both sides of this form is true and complete to the best of my knowledge and belief										
Signature		Printed Name		Title		Date				
Sarah Chapman		SARAH CHAPMAN		REGULATORY DIRECTOR		11/13/2023				
E-mail Address		SCHAPMAN@SPURENERGY.COM								

# INSTRUCTIONS

This form is to be filed with the appropriate District Office of the Division not later than 20 days after the completion of any newly-drilled or deepened well and not later than 60 days after completion of closure. When submitted as a completion report, this shall be accompanied by one copy of all electrical and radio-activity logs run on the well and a summary of all special tests conducted, including drill stem tests. All depths reported shall be measured depths. In the case of directionally drilled wells, true vertical depths shall also be reported. For multiple completions, items 11, 12 and 26-31 shall be reported for each zone.

## INDICATE FORMATION TOPS IN CONFORMANCE WITH GEOGRAPHICAL SECTION OF STATE

Southeastern New Mexico		Northwestern New Mexico	
T. Anhy	T. Canyon	T. Ojo Alamo	T. Penn A"
T. Salt	T. Strawn	T. Kirtland	T. Penn. "B"
B. Salt	T. Atoka	T. Fruitland	T. Penn. "C"
T. Yates	T. Miss	T. Pictured Cliffs	T. Penn. "D"
T. 7 Rivers	T. Devonian	T. Cliff House	T. Leadville
T. Queen 145'	T. Silurian	T. Menefee	T. Madison
T. Grayburg 515'	T. Montoya	T. Point Lookout	T. Elbert
T. San Andres 830'	T. Simpson	T. Mancos	T. McCracken
T. Glorieta 2185'	T. McKee	T. Gallup	T. Ignacio Otzte
T. Paddock 2270'	T. Ellenburger	Base Greenhorn	T. Granite
T. Blinebry 2935'	T. Gr. Wash	T. Dakota	
T. Tubb	T. Delaware Sand	T. Morrison	
T. Drinkard	T. Bone Springs	T. Todilto	
T. Abo	T.	T. Entrada	
T. Wolfcamp	T.	T. Wingate	
T. Penn	T.	T. Chinle	
T. Cisco (Bough C)	T.	T. Permian	

### OIL OR GAS SANDS OR ZONES

No. 1, from.....to..... No. 3, from.....to.....  
 No. 2, from.....to..... No. 4, from.....to.....

### IMPORTANT WATER SANDS

Include data on rate of water inflow and elevation to which water rose in hole.

No. 1, from.....to.....feet.....  
 No. 2, from.....to.....feet.....  
 No. 3, from.....to.....feet.....

## LITHOLOGY RECORD (Attach additional sheet if necessary)

From	To	Thickness In Feet	Lithology	From	To	Thickness In Feet	Lithology
145	515	370	SANDSTONE				
515	830	315	DOLOMITE				
830	2185	1355	DOLOMITE, SILTSTONE				
2185	2270	85	DOLOMITE, SILTSTONE				
2270	2935	665	DOLOMITE, LIMESTONE				

API #	30-015-53494	<b>Stros 29 20H</b>	County, ST	Eddy County, NM
Operator	Spur Energy Partners		Sec-Twn-Rng	30-18S-26E
Field	Penasco Draw		Footage	900' FNL and 275' FEL
Spud Date	7/16/2023		Survey	

RKB	3461'
GL	3441'

Hole Size	12-1/4"
TOC	surf
Method	circ returns

Csg Depth	1048'
Size	9-5/8"
Weight	36ppf
Grade	J55
Connections	BTC
Cement	545sx

Surface csg

Hole Size	8-3/4"	8-3/4"
TOC	surf	
Method	circ returns	

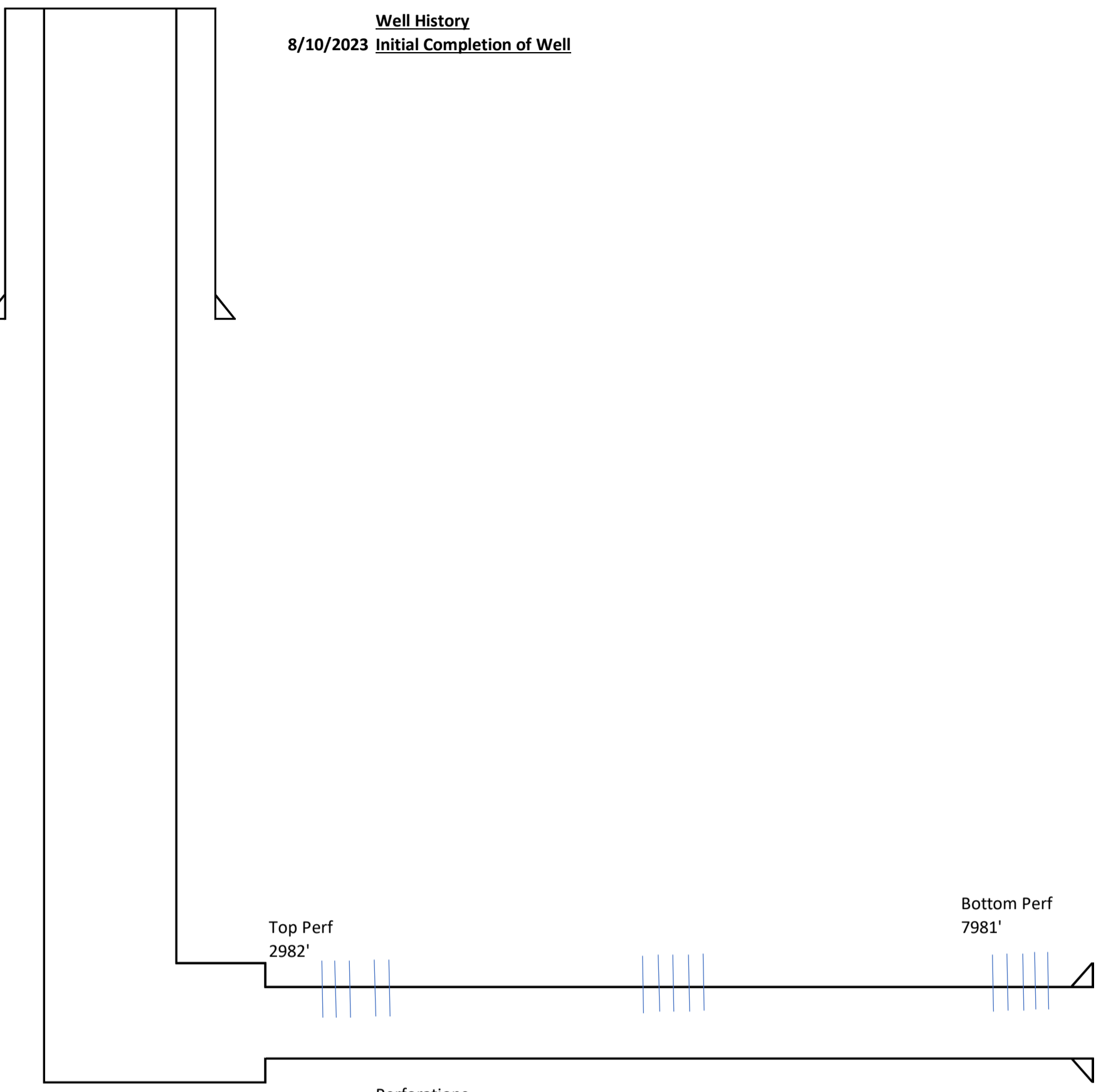
Int/Prod csg

Csg Depth	2916'	8050'
Size	7"	5-1/2"
Weight	32ppf	20ppf
Grade	L80	L80
Connections	BK-HT	BK-HT
Cement	1520sx	

(Proposed) Tubing Detail				
Jts	Size	Depth	Length	Detail
		20.00		KB Correction
79	3 1/2"	2,587.50	2,567.50	3 1/2" 9.3# J-55 EUE 8RD Western Falcon Modified Polycore Tubing
3	3 1/2"	2,685.50	98.00	3 1/2" 9.3# J-55 EUE 8RD Western Falcon Ultratube Tubing
		2,707.30	21.80	Summit 400 series, 67 Stage SF4300 AR
		2,729.10	21.80	Summit 400 series, 67 Stage SF4300 AR
		2,734.19	5.09	Summit 400 H2X Tandem GS/intake
		2,742.39	8.20	Summit 400 BPBSL CS HL seal
		2,750.59	8.20	Summit 400 BPBSL CS HL seal
		2,765.29	14.70	Summit 456 series motor, 120 HP, 1970 V, 43 A (derated to 90 HP)
		2,768.46	3.17	Sensor
	2 3/8"	2,774.46	6.00	Pup Joint 2-3/8"
	2 3/8"	2,774.96	0.50	Bull plug

Rod Detail					
Rods	Size	Depth	Length	Guides	Detail

Last Update	8/15/2023
By	Cristian Gonzalez



PBDT	7759'
TD MD	8050'
TD TVD	2740'

Sante Fe Main Office  
Phone: (505) 476-3441

General Information  
Phone: (505) 629-6116

Online Phone Directory  
<https://www.emnrd.nm.gov/ocd/contact-us>

**State of New Mexico**  
**Energy, Minerals and Natural Resources**  
**Oil Conservation Division**  
**1220 S. St Francis Dr.**  
**Santa Fe, NM 87505**

ACKNOWLEDGMENTS

Action 285922

**ACKNOWLEDGMENTS**

Operator: Spur Energy Partners LLC 9655 Katy Freeway Houston, TX 77024	OGRID: 328947
	Action Number: 285922
	Action Type: [C-104] Completion Packet (C-104C)

**ACKNOWLEDGMENTS**

<input checked="" type="checkbox"/>	I hereby certify that the required Water Use Report has been, or will be, submitted for this wells completion.
<input checked="" type="checkbox"/>	I hereby certify that the required FracFocus disclosure has been, or will be, submitted for this wells completion.

Sante Fe Main Office  
Phone: (505) 476-3441

General Information  
Phone: (505) 629-6116

Online Phone Directory  
<https://www.emnrd.nm.gov/ocd/contact-us>

**State of New Mexico**  
**Energy, Minerals and Natural Resources**  
**Oil Conservation Division**  
**1220 S. St Francis Dr.**  
**Santa Fe, NM 87505**

CONDITIONS

Action 285922

**CONDITIONS**

Operator: Spur Energy Partners LLC 9655 Katy Freeway Houston, TX 77024	OGRID: 328947
	Action Number: 285922
	Action Type: [C-104] Completion Packet (C-104C)

**CONDITIONS**

Created By	Condition	Condition Date
plmartinez	Future submittal fyi- C-104 Box 3 -NW -indicate ready date to match C-104 Box 22 Ready Date and C-105 Box 16 Ready Date. All dates should mirror each other.	5/4/2026