

District I
1625 N. French Dr., Hobbs, NM 88240
District II
1301 W. Grand Avenue, Artesia, NM 88210
District III
1000 Rio Brazos Road, Aztec, NM 87410
District IV
1220 S. St. Francis Dr., Santa Fe, NM 87505

State of New Mexico
Energy Minerals and Natural Resources

Form C-101
May 27, 2004

RECEIVED

Oil Conservation Division
1220 South St. Francis
Santa Fe, NM 87505

Submit to appropriate District Office

☐ AMENDED REPORT

APPLICATION FOR PERMIT TO DRILL, RE-ENTER, DEEPEN, PLUGBACK, OR ADD A ZONE

Operator Name and Address El Paso E & P Comapny, L.P. PO Box 190 Raton, NM 87740		Santa Fe, NM 87505	OGRID Number 180514
Property Code 24648		Property Name Vermejo Park Ranch	API Number 30-007-20823
Well No. VPR A 309		Proposed Pool 1 Stubblefield Canyon - Vermejo Gas	
Proposed Pool 2			

Surface Location

UL or lot no	Section	Township	Range	Lot Idn	Feet from the	North/South line	Feet from the	East/West line	County
L	23	31N	20E	L	1518	South	1217	West	Colfax

Proposed Bottom Hole Location If Different From Surface

UL or lot no	Section	Township	Range	Lot Idn	Feet from the	North/South line	Feet from the	East/West line	County

Additional Well Information

Work Type Code N	Well Type Code G	Cable/Rotary Rotary/Air	Lease Type Code P	Ground Level Elevation 7,986'
Multiple Yes	Proposed Depth 2,430'	Formation Vermejo	Contractor Pense	Spud Date May 15, 2007
Depth to Groundwater		Distance from nearest fresh water well		Distance from nearest surface water
Pit Liner: Synthetic <input type="checkbox"/> _____mils thick Clay <input type="checkbox"/> Pit Volume _____bbls Drilling Method: Closed-Loop System <input type="checkbox"/> Fresh Water <input type="checkbox"/> Brine <input type="checkbox"/> Diesel/Oil-based <input type="checkbox"/> Gas/Air <input checked="" type="checkbox"/>				

Proposed Casing and Cement Program

Hole Size	Casing Size	Casing weight/foot	Setting Depth	Sacks of Cement	Estimated TOC
11"	8 5/8"	23#	330'	100 sks	Surface
7 7/8"	5 1/2"	15.5#	2,430'	375 sks	Surface

Describe the proposed program. If this application is to DEEPEN or PLUG BACK, give the data on the present productive zone and proposed new productive zone. Describe the blowout prevention program, if any. Use additional sheets if necessary.

1. Drill 11" hole to +/- 330' with air.
2. Set 8 5/8" surface casing and cement to surface with 100 sks of cement.
3. Drill 7 7/8" hole to 2,430' with air. Run open hole logs.
4. Set 5 1/2" production casing to TD and cement to surface. Cement volumes calculated from open hole logs.
5. Perforate and stimulate the Vermejo and/or Raton Coals. Clean out well bore and run production equipment.

I hereby certify that the information given above is true and complete to the best of my knowledge and belief. I further certify that the drilling pit will be constructed according to NMOCD guidelines ☐, a general permit ☐, or an (attached) alternative OCD-approved plan ☐.

Printed name: **William M. Ordemann**
Title: **Drilling Superintendent**

E-mail Address: **Bill.Ordemann@Elpaso.com**

Date: **April 27, 2007**

Phone: (505)445-6724

OIL CONSERVATION DIVISION

Approved by:

Ed Martin

Title:

DISTRICT SUPERVISOR

Approval Date:

5/4/07

Expiration Date:

5/4/08

Conditions of Approval Attached ☐

District I
1625 N. French Dr., Hobbs, NM 88240
District II
1301 W. Grand Avenue, Artesia, NM 88210
District III
1000 Rio Brazos Rd., Aztec, NM 87410
District IV
1220 S. St. Francis Dr., Santa Fe, NM 87505

State of New Mexico
Energy, Minerals & Natural Resources Department
OIL CONSERVATION DIVISION
1220 South St. Francis Dr.
Santa Fe, NM 87505

Form C-102
Revised October 12, 2005
Submit to Appropriate District Office
State Lease - 4 Copies
Fee Lease - 3 Copies

☐ AMENDED REPORT

WELL LOCATION AND ACREAGE DEDICATION PLAT

¹ API Number 30-007-20823	² Pool Code 96970	³ Pool Name STUBBLEFIELD CANYON RATON - VERMEJO GAS
⁴ Property Code 24648	⁵ Property Name VERMEJO PARK RANCH	⁶ Well Number VPR'A'-309
⁷ OGRID No. 180514	⁸ Operator Name EL PASO E&P Company, L.P.	⁹ Elevation 7986'

¹⁰ Surface Location

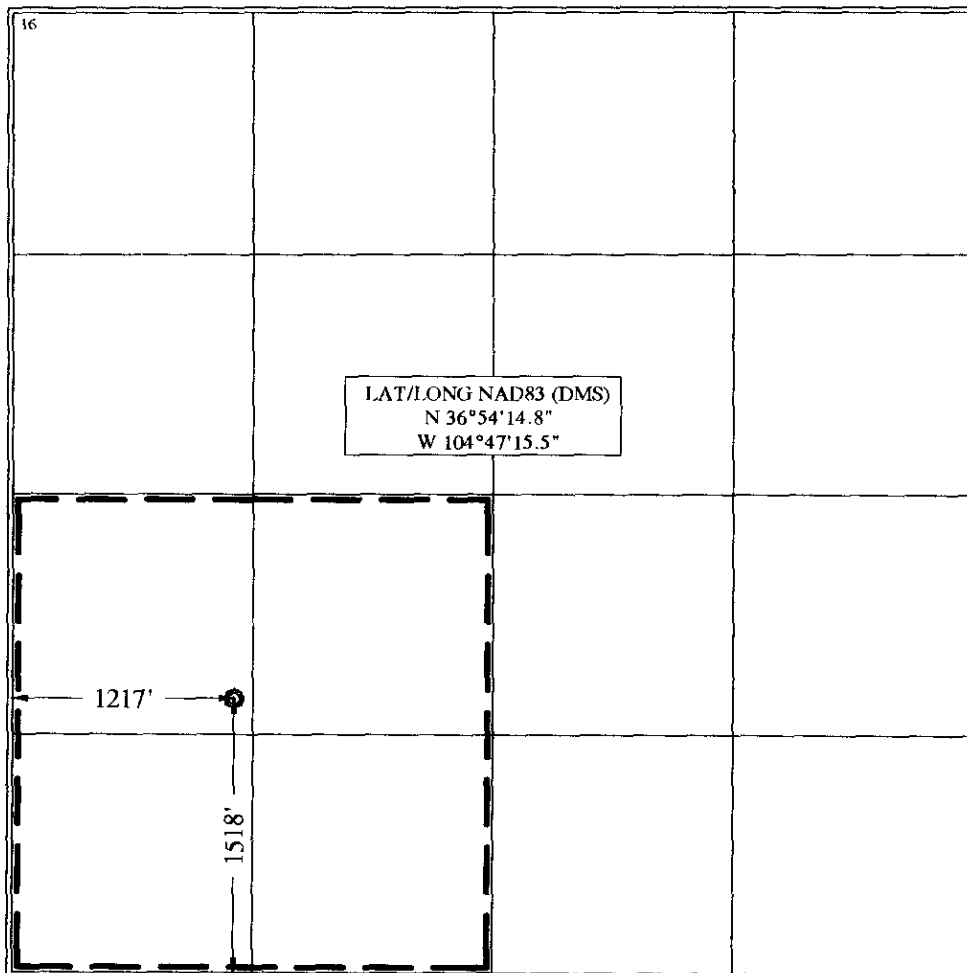
UL or lot no. L	Section 23	Township T 31 N	Range R 20 E	Lot Idn L	Feet from the 1518	North/South line SOUTH	Feet from the 1217	East/West line WEST	County COLFAX
--------------------	---------------	--------------------	-----------------	--------------	-----------------------	---------------------------	-----------------------	------------------------	------------------

¹¹ Bottom Hole Location If Different From Surface

UL or lot no.	Section	Township	Range	Lot Idn	Feet from the	North/South line	Feet from the	East/West line	County
---------------	---------	----------	-------	---------	---------------	------------------	---------------	----------------	--------

¹² Dedicated Acres	¹³ Joint or Infill	¹⁴ Consolidation Code	¹⁵ Order No.
-------------------------------	-------------------------------	----------------------------------	-------------------------

NO ALLOWABLE WILL BE ASSIGNED TO THIS COMPLETION UNTIL ALL INTERESTS HAVE BEEN CONSOLIDATED OR A NON-STANDARD UNIT HAS BEEN APPROVED BY THE DIVISION



¹⁷ OPERATOR CERTIFICATION

I hereby certify that the information contained herein is true and complete to the best of my knowledge and belief, and that this organization either owns a working interest or unleased mineral interest in the land including the proposed bottom hole location or has a right to drill this well at this location pursuant to a contract with an owner of such a mineral or working interest, or to a voluntary pooling agreement or a compulsory pooling order heretofore entered by the division.

William M Ordean 5-1-07
Signature Date

William M Ordean
Printed Name

¹⁸ SURVEYOR CERTIFICATION

I hereby certify that the well location shown on this plat was plotted from field notes of actual surveys made by me or under my supervision, and that the same is true and correct to the best of my belief.

April 10, 2007

Date of Survey

Signature and Seal of Professional Surveyor:

Jim Shields
Certificate Number NM LS NO. 5103