

District I
1625 N. French Dr., Hobbs, NM 88240
District II
1301 W. Grand Avenue, Artesia, NM 88210
District III
1000 Rio Brazos Road, Aztec, NM 87410
District IV
1220 S. St. Francis Dr., Santa Fe, NM 87505

State of New Mexico
Oil Conservation Division
1220 South St. Francis Dr.
Santa Fe, NM 87505

Form C-101
May 27, 2004

Submit to appropriate District Office

☐ AMENDED REPORT

RECEIVED
2007 DEC 27 AM 10 54

APPLICATION FOR PERMIT TO DRILL, RE-ENTER, DEEPEN, PLUGBACK, OR ADD A ZONE

¹ Operator Name and Address El Paso E & P Company, L.P. PO Box 190 Raton, NM 87740		² OGRID Number 180514
		³ API Number 30-007-20904
⁴ Property Code 25180	⁵ Property Name Vermejo Park Ranch	
⁹ Proposed Pool 1 Van Bremmer - Vermejo		⁶ Well No. VPR B 245
¹⁰ Proposed Pool 2		

⁷ Surface Location									
UL or lot no. L	Section 10	Township 29N	Range 19E	Lot Idn L	Feet from the 1630	North/South line South	Feet from the 240	East/West line West	County Colfax

⁸ Proposed Bottom Hole Location If Different From Surface									
UL or lot no.	Section	Township	Range	Lot Idn	Feet from the	North/South line	Feet from the	East/West line	County

¹¹ Work Type Code N					¹² Well Type Code G		¹³ Cable/Rotary Rotary/Air		¹⁴ Lease Type Code P		¹⁵ Ground Level Elevation 7,857'	
¹⁶ Multiple Yes		¹⁷ Proposed Depth 2,590'			¹⁸ Formation Vermejo			¹⁹ Contractor Pense		²⁰ Spud Date January 7, 2008		
Depth to Groundwater				Distance from nearest fresh water well				Distance from nearest surface water				
Pit: Liner: Synthetic <input type="checkbox"/> _____mils thick Clay <input type="checkbox"/> Pit Volume: _____bbls Drilling Method: _____												
Closed-Loop System <input type="checkbox"/> Fresh Water <input type="checkbox"/> Brine <input type="checkbox"/> Diesel/Oil-based <input type="checkbox"/> Gas/Air <input checked="" type="checkbox"/>												

²¹ Proposed Casing and Cement Program					
Hole Size	Casing Size	Casing weight/foot	Setting Depth	Sacks of Cement	Estimated TOC
11"	8 5/8"	23#	330'	100 sks	Surface
7 7/8"	5 1/2"	15.5#	2,590'	400 sks	Surface

²² Describe the proposed program. If this application is to DEEPEN or PLUG BACK, give the data on the present productive zone and proposed new productive zone. Describe the blowout prevention program, if any. Use additional sheets if necessary.

1. Drill 11" hole to +/- 330' with air.
2. Set 8 5/8" surface casing and cement to surface with 100 sks of cement.
3. Drill 7 7/8" hole to 2,590' with air. Run open hole logs.
4. Set 5 1/2" production casing to TD and cement to surface. Cement volumes calculated from open hole logs.
5. Perforate and stimulate the Vermejo and/or Raton Coals. Clean out well bore and run production equipment.

²³ I hereby certify that the information given above is true and complete to the best of my knowledge and belief. I further certify that the drilling pit will be constructed according to NMOCD guidelines ☐, a general permit ☐, or an (attached) alternative OCD-approved plan ☐.

Printed name: William Ordemann	<i>WMO 12/21/07</i>
Title: Drilling Superintendent	
E-mail Address: Bill.Ordemann@Elpaso.com	
Date: 12/21/07	Phone: _____

OIL CONSERVATION DIVISION	
Approved by: <i>Ed Marto</i>	
Title: DISTRICT SUPERVISOR	
Approval Date: <i>1/2/08</i>	Expiration Date: <i>1/2/10</i>
Conditions of Approval Attached <input type="checkbox"/>	

District I
1625 N. French Dr., Hobbs, NM 88240
District II
1301 W. Grand Avenue, Artesia, NM 88210
District III
1000 Rio Brazos Rd., Aztec, NM 87410
District IV
1220 S. St. Francis Dr., Santa Fe, NM 87505

State of New Mexico
Energy, Minerals & Natural Resources Department
OIL CONSERVATION DIVISION
1220 South St. Francis Dr.
Santa Fe, NM 87505

Form C-102
Revised October 12, 2005
Submit to Appropriate District Office
State Lease - 4 Copies
Fee Lease - 3 Copies

☐ AMENDED REPORT

WELL LOCATION AND ACREAGE DEDICATION PLAT

¹ API Number 30-007-20904	² Pool Code 97047	³ Pool Name VAN BREMMER CANYON - VERMEJO GAS
⁴ Property Code 25180	⁵ Property Name VERMEJO PARK RANCH	⁶ Well Number VPR'B'-245
⁷ OGRID No. 180514	⁸ Operator Name EL PASO E&P Company, L.P.	⁹ Elevation 7857'

¹⁰ Surface Location

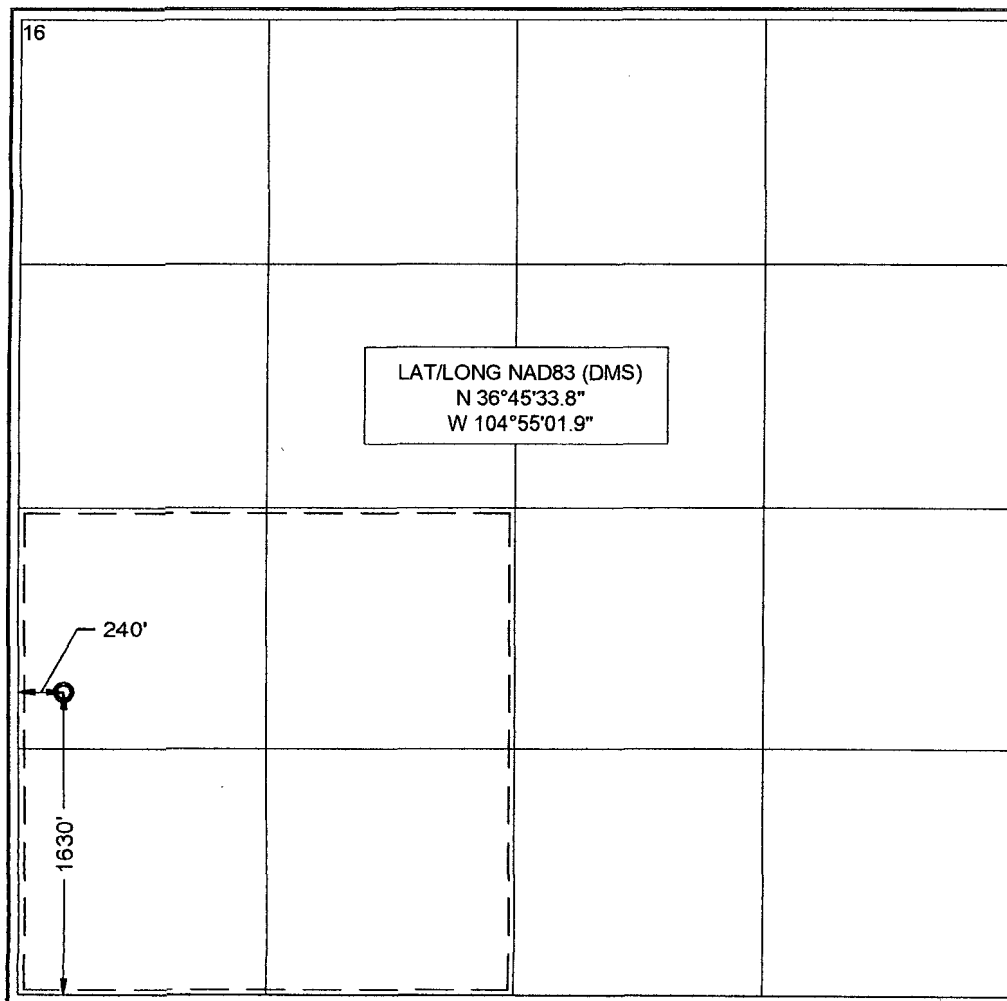
UL or lot no. L	Section 10	Township T 29N	Range R 19 E	Lot Idn L	Feet from the 1630	North/South line SOUTH	Feet from the 240	East/West line WEST	County COLFAX
--------------------	---------------	-------------------	-----------------	--------------	-----------------------	---------------------------	----------------------	------------------------	------------------

¹¹ Bottom Hole Location If Different From Surface

UL or lot no.	Section	Township	Range	Lot Idn	Feet from the	North/South line	Feet from the	East/West line	County
---------------	---------	----------	-------	---------	---------------	------------------	---------------	----------------	--------

¹² Dedicated Acres	¹³ Joint or Infill	¹⁴ Consolidation Code	¹⁵ Order No.
-------------------------------	-------------------------------	----------------------------------	-------------------------

NO ALLOWABLE WILL BE ASSIGNED TO THIS COMPLETION UNTIL ALL INTERESTS HAVE BEEN CONSOLIDATED OR A NON-STANDARD UNIT HAS BEEN APPROVED BY THE DIVISION



¹⁷ OPERATOR CERTIFICATION

I hereby certify that the information contained herein is true and complete to the best of my knowledge and belief, and that this organization either owns a working interest or unleased mineral interest in the land including the proposed bottom hole location or has a right to drill this well at this location pursuant to a contract with an owner of such a mineral or working interest, or to a voluntary pooling agreement or a compulsory pooling order heretofore entered by the division.

William M. Orde 12/21/07
Signature Date

WILLIAM M. ORDEMANN
Printed Name

¹⁸ SURVEYOR CERTIFICATION

I hereby certify that the well location shown on this plat was plotted from field notes of actual surveys made by me or under my supervision, and that the same is true and correct to the best of my belief.

December 4, 2007

Date of Survey

Signature and Seal of Professional Surveyor:

Joe Shields
Certificate Number NM L.S. NO. 5103

District I
1625 N. French Dr., Hobbs, NM 88240
District II
1301 W. Grand Avenue, Artesia, NM 88210
District III
1000 Rio Brazos Rd., Aztec, NM 87410
District IV
1220 S. St. Francis Dr., Santa Fe, NM 87505

State of New Mexico
Energy, Minerals & Natural Resources Department
OIL CONSERVATION DIVISION
1220 South St. Francis Dr.
Santa Fe, NM 87505

Form C-102
Revised October 12, 2005
Submit to Appropriate District Office
State Lease - 4 Copies
Fee Lease - 3 Copies
☐ AMENDED REPORT

WELL LOCATION AND ACREAGE DEDICATION PLAT

¹ API Number 30-007-20904	² Pool Code 97047	³ Pool Name VAN BREMMER CANYON - VERMEJO GAS
⁴ Property Code 25180	⁵ Property Name VERMEJO PARK RANCH	⁶ Well Number VPR'B'-245
⁷ OGRID No. 180514	⁸ Operator Name EL PASO E&P Company, L.P.	⁹ Elevation 7857'

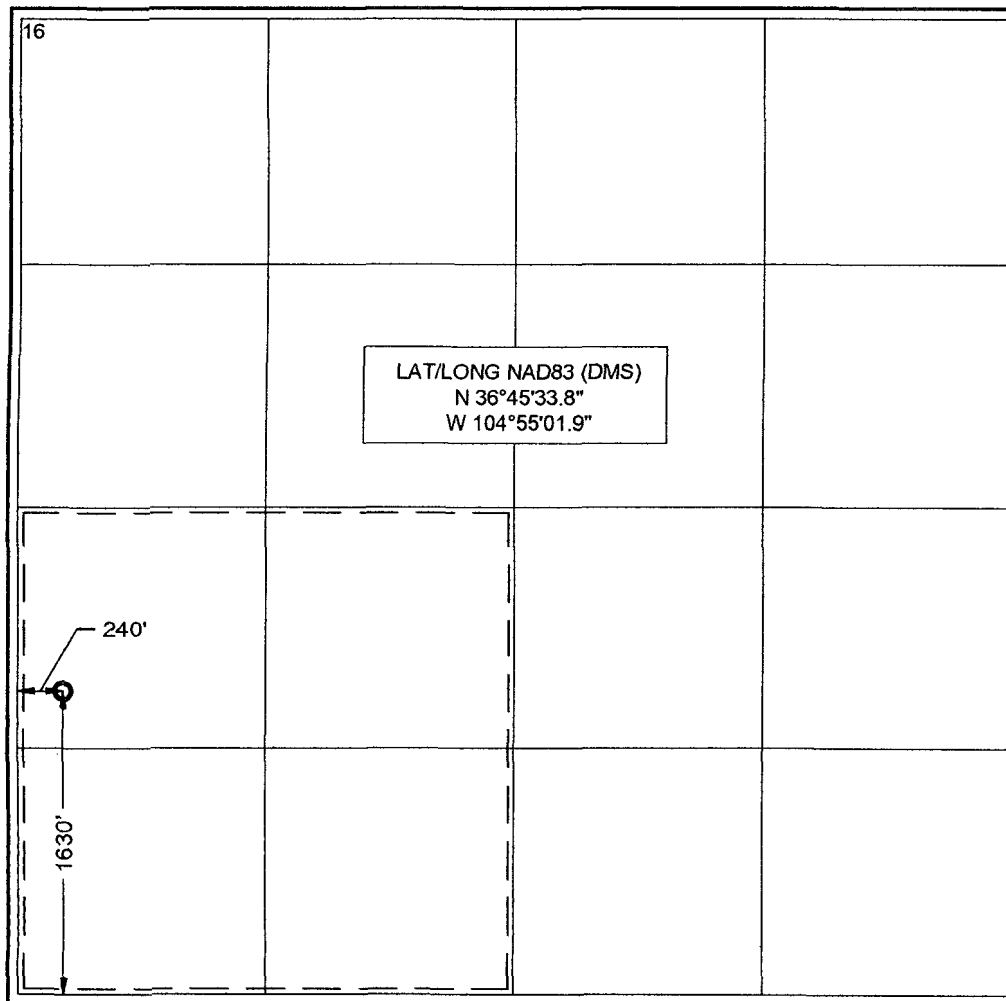
¹⁰ Surface Location

UL or lot no. L	Section 10	Township T 29N	Range R 19 E	Lot Idn L	Feet from the 1630	North/South line SOUTH	Feet from the 240	East/West line WEST	County COLFAX
--------------------	---------------	-------------------	-----------------	--------------	-----------------------	---------------------------	----------------------	------------------------	------------------

¹¹ Bottom Hole Location If Different From Surface

UL or lot no.	Section	Township	Range	Lot Idn	Feet from the	North/South line	Feet from the	East/West line	County
¹² Dedicated Acres	¹³ Joint or Infill	¹⁴ Consolidation Code	¹⁵ Order No.						

NO ALLOWABLE WILL BE ASSIGNED TO THIS COMPLETION UNTIL ALL INTERESTS HAVE BEEN CONSOLIDATED OR A NON-STANDARD UNIT HAS BEEN APPROVED BY THE DIVISION



¹⁷ OPERATOR CERTIFICATION

I hereby certify that the information contained herein is true and complete to the best of my knowledge and belief, and that this organization either owns a working interest or unleased mineral interest in the land including the proposed bottom hole location or has a right to drill this well at this location pursuant to a contract with an owner of such a mineral or working interest, or to a voluntary pooling agreement or a compulsory pooling order heretofore entered by the division.

William M Ordemann 12/21/07
Signature Date

WILLIAM M ORDEMANN
Printed Name

¹⁸ SURVEYOR CERTIFICATION

I hereby certify that the well location shown on this plat was plotted from field notes of actual surveys made by me or under my supervision, and that the same is true and correct to the best of my belief.

December 4, 2007

Date of Survey

Signature and Seal of Professional Surveyor:

Jim Shields
Certificate Number NM LS NO. 5103

District I
1625 N. French Dr., Hobbs, NM 88240
District II
1301 W. Grand Avenue, Artesia, NM 88210
District III
1000 Rio Brazos Rd., Aztec, NM 87410
District IV
1220 S. St. Francis Dr., Santa Fe, NM 87505

State of New Mexico
Energy, Minerals & Natural Resources Department
OIL CONSERVATION DIVISION
1220 South St. Francis Dr.
Santa Fe, NM 87505

Form C-102
Revised October 12, 2005
Submit to Appropriate District Office
State Lease - 4 Copies
Fee Lease - 3 Copies

☐ AMENDED REPORT

WELL LOCATION AND ACREAGE DEDICATION PLAT

¹ API Number 30-007-20904	² Pool Code 97047	³ Pool Name VAN BREMMER CANYON - VERMEJO GAS
⁴ Property Code 25180	⁵ Property Name VERMEJO PARK RANCH	⁶ Well Number VPR'B'-245
⁷ OGRID No. 180514	⁸ Operator Name EL PASO E&P Company, L.P.	⁹ Elevation 7857'

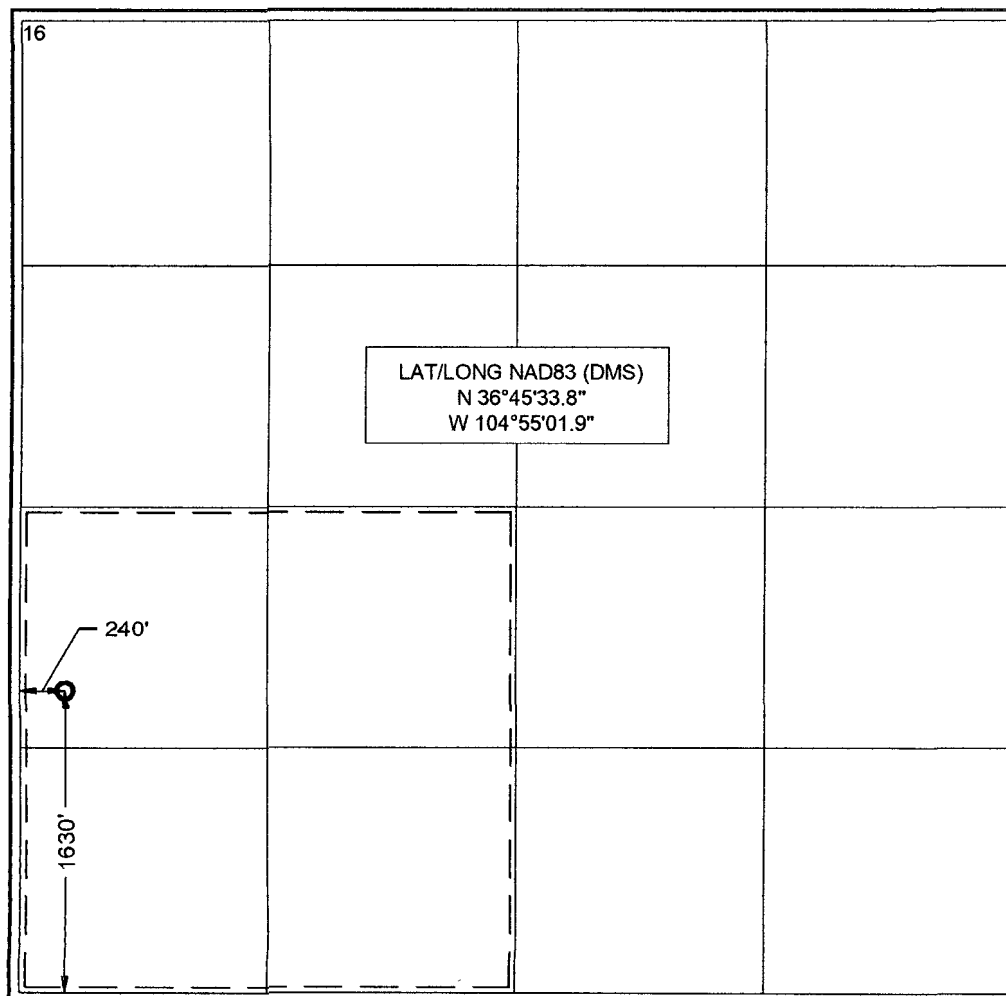
¹⁰ Surface Location

UL or lot no. L	Section 10	Township T 29N	Range R 19 E	Lot Idn L	Feet from the 1630	North/South line SOUTH	Feet from the 240	East/West line WEST	County COLFAX
--------------------	---------------	-------------------	-----------------	--------------	-----------------------	---------------------------	----------------------	------------------------	------------------

¹¹ Bottom Hole Location If Different From Surface

UL or lot no.	Section	Township	Range	Lot Idn	Feet from the	North/South line	Feet from the	East/West lin	County
¹² Dedicated Acres	¹³ Joint or Infill	¹⁴ Consolidation Code	¹⁵ Order No.						

NO ALLOWABLE WILL BE ASSIGNED TO THIS COMPLETION UNTIL ALL INTERESTS HAVE BEEN CONSOLIDATED OR A NON-STANDARD UNIT HAS BEEN APPROVED BY THE DIVISION



¹⁷ OPERATOR CERTIFICATION

I hereby certify that the information contained herein is true and complete to the best of my knowledge and belief, and that this organization either owns a working interest or unleased mineral interest in the land including the proposed bottom hole location or has a right to drill this well at this location pursuant to a contract with an owner of such a mineral or working interest, or to a voluntary pooling agreement or a compulsory pooling order heretofore entered by the division.

William M. Orde 12/21/07
Signature Date

William M. Orde
Printed Name

¹⁸ SURVEYOR CERTIFICATION

I hereby certify that the well location shown on this plat was plotted from field notes of actual surveys made by me or under my supervision, and that the same is true and correct to the best of my belief.

December 4, 2007

Date of Survey

Signature and Seal of Professional Surveyor:

Joe Shields
Certificate Number NM LS NO. 5103

District I
1625 N. French Dr., Hobbs, NM 88240
District II
1301 W. Grand Avenue, Artesia, NM 88210
District III
1000 Rio Brazos Rd., Aztec, NM 87410
District IV
1220 S. St. Francis Dr., Santa Fe, NM 87505

State of New Mexico
Energy, Minerals & Natural Resources Department
OIL CONSERVATION DIVISION
1220 South St. Francis Dr.
Santa Fe, NM 87505

Form C-102
Revised October 12, 2005
Submit to Appropriate District Office
State Lease - 4 Copies
Fee Lease - 3 Copies

☐ AMENDED REPORT

WELL LOCATION AND ACREAGE DEDICATION PLAT

¹ API Number 30-007-20904	² Pool Code 97047	³ Pool Name VAN BREMMER CANYON - VERMEJO GAS
⁴ Property Code 25180	⁵ Property Name VERMEJO PARK RANCH	
⁷ OGRID No. 180514	⁸ Operator Name EL PASO E&P Company, L.P.	
		⁶ Well Number VPR'B'-245
		⁹ Elevation 7857'

¹⁰ Surface Location

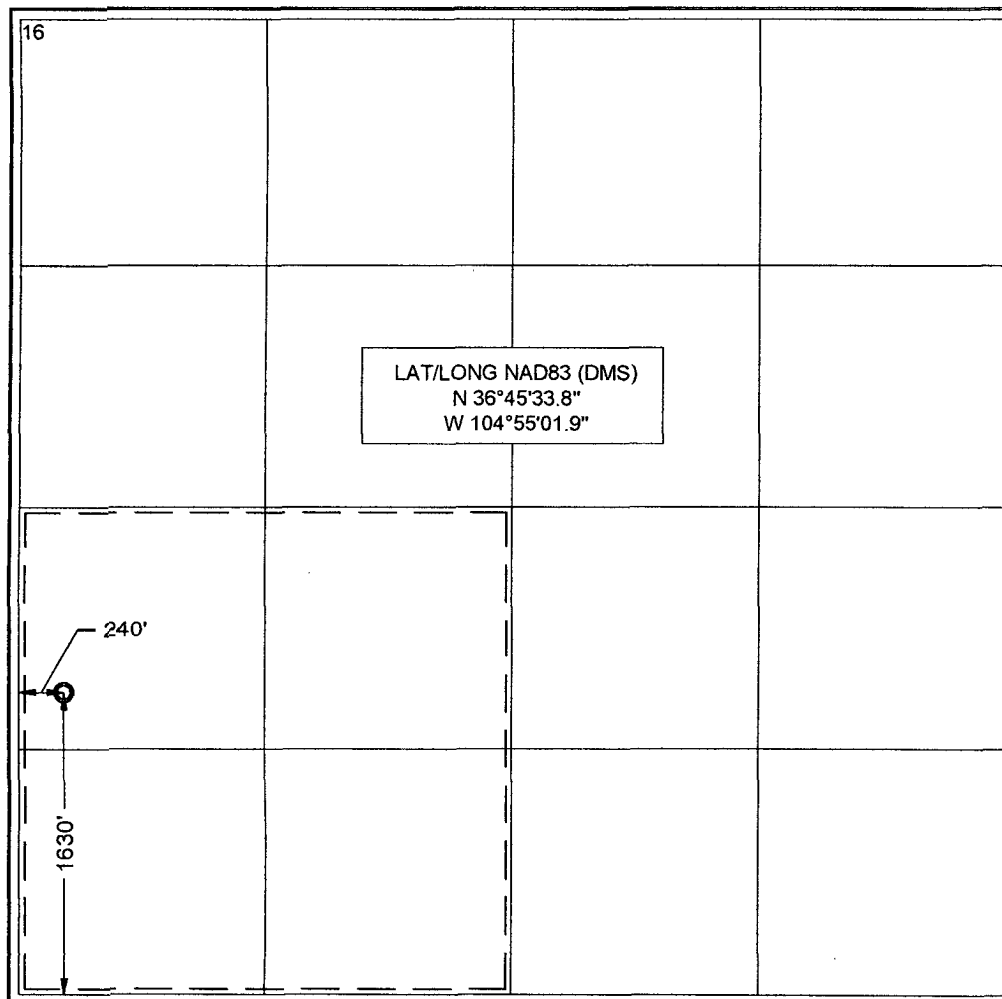
UL or lot no.	Section	Township	Range	Lot Idn	Feet from the	North/South line	Feet from the	East/West line	County
L	10	T 29N	R 19 E	L	1630	SOUTH	240	WEST	COLFAX

¹¹ Bottom Hole Location If Different From Surface

UL or lot no.	Section	Township	Range	Lot Idn	Feet from the	North/South line	Feet from the	East/West line	County

¹² Dedicated Acres	¹³ Joint or Infill	¹⁴ Consolidation Code	¹⁵ Order No.

NO ALLOWABLE WILL BE ASSIGNED TO THIS COMPLETION UNTIL ALL INTERESTS HAVE BEEN CONSOLIDATED OR A NON-STANDARD UNIT HAS BEEN APPROVED BY THE DIVISION



¹⁷ **OPERATOR CERTIFICATION**
I hereby certify that the information contained herein is true and complete to the best of my knowledge and belief, and that this organization either owns a working interest or unleased mineral interest in the land including the proposed bottom hole location or has a right to drill this well at this location pursuant to a contract with an owner of such a mineral or working interest, or to a voluntary pooling agreement or a compulsory pooling order heretofore entered by the division.
William M. Ordeman 12/21/07
Signature Date
William M. Ordeman
Printed Name

¹⁸ **SURVEYOR CERTIFICATION**
I hereby certify that the well location shown on this plat was plotted from field notes of actual surveys made by me or under my supervision, and that the same is true and correct to the best of my belief.
December 4, 2007
Date of Survey
Signature and Seal of Professional Surveyor:
Qu. Shilder
Certificate Number NM LS NO. 5103