

State of New Mexico
 Energy Minerals and Natural Resources
 Oil Conservation Division
 1220 South St. Francis Dr.
 Santa Fe, NM 8705

RECEIVED

2009 APR 21 11 30 AM District 14

**APPLICATION FOR PERMIT TO DRILL, RE-ENTER, DEEPEN, PLUGBACK, OR ADD
 A ZONE**

¹ Operator Name and Address Reliant Exploration & Production, LLC. 3700 Kermit Highway Odessa, Texas 79764		² OGRID Number 251905
³ Property Code 37025		⁴ API Number 30-021-20497
⁵ Property Name LIBBY MINERALS LLC 1931		⁶ Well No. 5-1-K
⁹ Proposed Pool 1 Bravo Dome 96010		¹⁰ Proposed Pool 2

⁷ Surface Location

UL or lot no.	Section	Township	Range	Lot Idn	Feet from the	North/South line	Feet from the	East/West line	County
K	5	19 North	31 East NMPM		1650'	South	1876'	West	Harding

⁸ Proposed Bottom Hole Location If Different From Surface

UL or lot no.	Section	Township	Range	Lot Idn	Feet from the	North/South line	Feet from the	East/West line	County

Additional Well Information

¹¹ Work Type Code N	¹² Well Type Code C	¹³ Cable/Rotary R	¹⁴ Lease Type Code P	¹⁵ Ground Level Elevation 4474
¹⁶ Multiple NO	¹⁷ Proposed Depth 2600'	¹⁸ Formation TUBB	¹⁹ Contractor CAPSTAR DRILLING	²⁰ Spud Date 6/29/09 30/13/2008
Depth to Groundwater > 100'		Distance from nearest fresh water well > 1000'		Distance from nearest surface water > 1000'
Pit: Liner: Synthetic <input checked="" type="checkbox"/> 20 mils thick Clay <input type="checkbox"/> Pit Volume: 850 bbls Drilling Method:				
Closed-Loop System <input type="checkbox"/>			Fresh Water <input checked="" type="checkbox"/> Brine <input type="checkbox"/> Diesel/Oil-based <input type="checkbox"/> Gas/Air <input type="checkbox"/>	

²¹ Proposed Casing and Cement Program

Hole Size	Casing Size	Casing weight/foot	Setting Depth	Sacks of Cement	Estimated TOC
12-1/4"	8-5/8"	24#	700'	300SX	SURFACE
7-7/8"	5-1/2"	5.9#FG/15.5#	2600'	400SX	SURFACE

²² Describe the proposed program. If this application is to DEEPEN or PLUG BACK, give the data on the present productive zone and proposed new productive zone. Describe the blowout prevention program, if any. Use additional sheets if necessary.

SEE ATTACHMENTS

²³ I hereby certify that the information given above is true and complete to the best of my knowledge and belief. I further certify that the drilling pit will be constructed according to NMOCD guidelines , a general permit , or an (attached) alternative OCD-approved plan .

Signature: *Scott S. Vanderburg*
 Printed name: Scott S. Vanderburg
 Title: President

E-mail Address: scottv@reliantholdingsltd.com

Date: 4/16/09

Phone: 432-362-9206

OIL CONSERVATION DIVISION	
Approved by: <i>Ed Marto</i>	DISTRICT SUPERVISOR
Approval Date: 5/4/09	Expiration Date: 5/4/11
Conditions of Approval Attached <input type="checkbox"/>	

OIL CONSERVATION COMMISSION TO BE NOTIFIED
 WITHIN 24 HOURS OF BEGINNING OPERATIONS

ATTACHMENT C-101
RELIANT EXPLORATION & PRODUCTION WELL 5-1-K

PROPOSED TD: 2600'

BOP PROGRAM: 0-700' None
700 – 2600' 9" annular 3000# Ragan Tuaras

Casing: Surface: 8-5/8" OD 24# J55 8rd ST&C new casing set at
700' 12-1/4" hole Centralizers from TD – Surface, every fourth
joint

Production: 5 -1/2" OD new casing from 0-2600'
300' – 15.5# J55 8rd LTC 2300' – 5.9# 10rd FG
7 -7/8" hole – 5 centralizers

* This well will have fiberglass casing from the surface down to
the productive interval (Tubb). Steel casing will be used across the
Tubb. The fiberglass casing will at a minimum penetrate the
Cimarron formation, with the optimum setting point being the
midpoint of the Cimarron formation.

Cement: Surface – Circulate cement with 300sx class C – additives 2# C45,
weight of 12.4# per gallon. Yield 2.14 and 1/8# of Celaflake per
sx. Tail Cement 100sx class C 2%CaCl with 1/8# per sx
Celaflake Yield of 1.32# with weight of 14.8# per gallon

Production- Circulate cement with 400sx class C – additives 2#
C45, weight of 12.4# per gallon. Yield 2.14 and 1/8# of Celaflake
per sx. Tail Cement 100sx class C 2%CaCl with 1/8# per sx
Celaflake Yield of 1.32# with weight of 14.8# per gallon

Mud 0-700' Fresh water/native mud. Wt 8.6-9.2ppg,
Vis 32.=-36sec

700- 2600' Fresh water/ Starch/Gel with ph control as needed.
Wt 9.0-9.2ppg, Vis 28-29 sec

Utilizing Metal Pits with a 20' by 90' by 6' deep reserve lined pit
with ~~12~~ply liner.

80' x 80'
20 mil

District I
1625 N. French Dr., Hobbs, NM 88240
District II
7301 W. Grand Avenue, Artesia, NM 88210
District III
1000 Rio Brozos Rd., Aztec, NM 87410
District IV
1220 S. St. Francis Dr., Santa Fe, NM 87505

State of New Mexico
Energy, Minerals & Natural Resources Department
OIL CONSERVATION DIVISION
1220 South St. Francis Dr.
Santa Fe, NM 87505

Form C-102
Revised October 12, 2005
Submit to Appropriate District Office
State Lease- 4 Copies
Fee Lease- 3 Copies

AMENDED REPORT

WELL LOCATION AND ACREAGE DEDICATION PLAT

API Number 30-021-20497	Pool Code 96010	Pool Name Bravo Dome
Property Code 37025	Property Name LIBBY MINERALS LLC 1931	Well Number 5-1-K
OCRID No. 251905	Operator Name RELIANT EXPLORATION & PRODUCTION, LLC.	Elevation 4474'

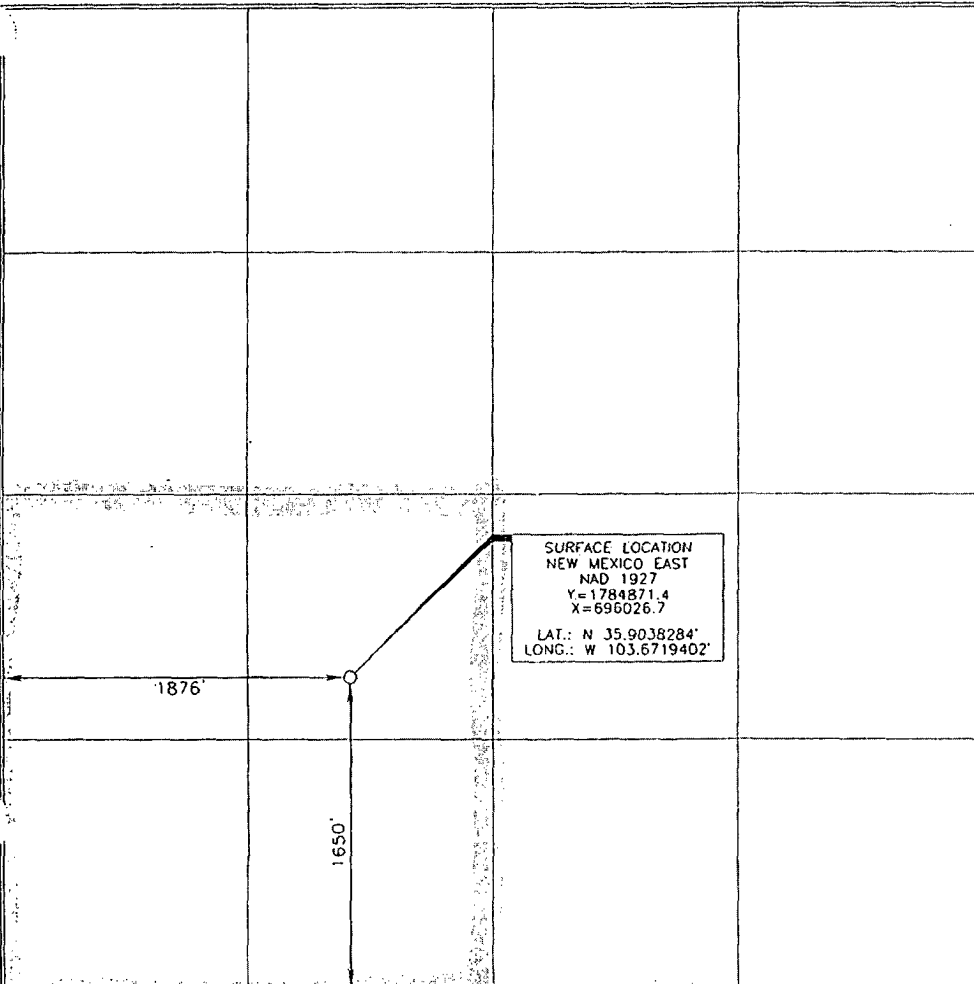
Surface Location

UL or lot no.	Section	Township	Range	Lot Idn	Feet from the	North/South line	Feet from the	East/West line	County
K	5	19 NORTH	31 EAST, N.M.P.M.		1650'	SOUTH	1876'	WEST	HARDING

Bottom Hole Location If Different From Surface

UL or lot no.	Section	Township	Range	Lot Idn	Feet from the	North/South line	Feet from the	East/West line	County				
<table border="1"> <tr> <td>Dedicated Acres 160</td> <td>Joint or Infill</td> <td>Consolidation Code</td> <td>Order No.</td> </tr> </table>										Dedicated Acres 160	Joint or Infill	Consolidation Code	Order No.
Dedicated Acres 160	Joint or Infill	Consolidation Code	Order No.										

No allowable will be assigned to this completion until all interests have been consolidated or a non-standard unit has been approved by the division.



OPERATOR CERTIFICATION

I hereby certify that the information contained herein is true and complete to the best of my knowledge and belief, and that this organization either owns a working interest or unleased mineral interest in the land including the proposed bottom hole location or has a right to drill this well at this location pursuant to a contract with an owner of such a mineral or working interest, or to a voluntary pooling agreement or a compulsory pooling order heretofore entered by the division.

Scott Vanderburg 4/16/09
Signature Date
Scott Vanderburg
Printed Name

SURVEYOR CERTIFICATION

I hereby certify that the well location shown on this plat was located from field notes of actual surveys made by me or under my supervision, and that the same is true and correct to the best of my belief.

15079
DECEMBER 18, 2007
Date of Survey
Signature and Seal of Professional Surveyor
Terry J. Cook 2/8/2008
Certificate Number 15079

District I
1625 N. French Dr., Hobbs, NM 88240
District II
1301 W. Grand Avenue, Artesia, NM 88210
District III
1000 Rio Brazos Road, Aztec, NM 87410
District IV
1220 S. St. Francis Dr., Santa Fe, NM 87505

State of New Mexico
Energy Minerals and Natural Resources
Department
Oil Conservation Division
1220 South St. Francis Dr.
Santa Fe, NM 87505

Form C-144
July 21, 2008

For temporary pits, closed-loop systems, and below-grade tanks, submit to the appropriate NMOCD District Office.
For permanent pits and exceptions submit to the Santa Fe Environmental Bureau office and provide a copy to the appropriate NMOCD District Office.

Pit, Closed-Loop System, Below-Grade Tank, or
Proposed Alternative Method Permit or Closure Plan Application

- Type of action: Permit of a pit, closed-loop system, below-grade tank, or proposed alternative method
 Closure of a pit, closed-loop system, below-grade tank, or proposed alternative method
 Modification to an existing permit
 Closure plan only submitted for an existing permitted or non-permitted pit, closed-loop system, below-grade tank, or proposed alternative method

Instructions: Please submit one application (Form C-144) per individual pit, closed-loop system, below-grade tank or alternative request

Please be advised that approval of this request does not relieve the operator of liability should operations result in pollution of surface water, ground water or the environment. Nor does approval relieve the operator of its responsibility to comply with any other applicable governmental authority's rules, regulations or ordinances.

1.
Operator: Reliant Exploration & Production, LLC OGRID #: 251905
Address: 3700 Kermit Highway Odessa, Texas 79764
Facility or well name: Libby Minerals LLC 1931 No. 5-1-K
API Number: 30-021-20497 OCD Permit Number: _____
U/L or Qtr/Qtr K Section 5 Township 19N Range 31E County: Harding
Center of Proposed Design: Latitude 35.9038284° N Longitude 103.6719402° W NAD: 1927 1983
Surface Owner: Federal State Private Tribal Trust or Indian Allotment

2.
 Pit: Subsection F or G of 19.15.17.11 NMAC
Temporary: Drilling Workover
 Permanent Emergency Cavitation P&A
 Lined Unlined Liner type: Thickness 20 mil LLDPE HDPE PVC Other _____
 String-Reinforced
Liner Seams: Welded Factory Other _____ Volume: 850 bbl Dimensions: L 80' x W 80' x D 6'

3.
 Closed-loop System: Subsection H of 19.15.17.11 NMAC
Type of Operation: P&A Drilling a new well Workover or Drilling (Applies to activities which require prior approval of a permit or notice of intent)
 Drying Pad Above Ground Steel Tanks Haul-off Bins Other _____
 Lined Unlined Liner type: Thickness _____ mil LLDPE HDPE PVC Other _____
Liner Seams: Welded Factory Other _____

4.
 Below-grade tank: Subsection I of 19.15.17.11 NMAC
Volume: _____ bbl Type of fluid: _____
Tank Construction material: _____
 Secondary containment with leak detection Visible sidewalls, liner, 6-inch lift and automatic overflow shut-off
 Visible sidewalls and liner Visible sidewalls only Other _____
Liner type: Thickness _____ mil HDPE PVC Other _____

5.
 Alternative Method:
Submittal of an exception request is required. Exceptions must be submitted to the Santa Fe Environmental Bureau office for consideration of approval.

6. **Fencing:** Subsection D of 19.15.17.11 NMAC (*Applies to permanent pits, temporary pits, and below-grade tanks*)

Chain link, six feet in height, two strands of barbed wire at top (*Required if located within 1000 feet of a permanent residence, school, hospital, institution or church*)

Four foot height, four strands of barbed wire evenly spaced between one and four feet

Alternate. Please specify _____

7. **Netting:** Subsection E of 19.15.17.11 NMAC (*Applies to permanent pits and permanent open top tanks*)

Screen Netting Other _____

Monthly inspections (If netting or screening is not physically feasible)

8. **Signs:** Subsection C of 19.15.17.11 NMAC

12"x 24", 2" lettering, providing Operator's name, site location, and emergency telephone numbers

Signed in compliance with 19.15.3.103 NMAC

9. **Administrative Approvals and Exceptions:**
 Justifications and/or demonstrations of equivalency are required. Please refer to 19.15.17 NMAC for guidance.
Please check a box if one or more of the following is requested, if not leave blank:

Administrative approval(s): Requests must be submitted to the appropriate division district or the Santa Fe Environmental Bureau office for consideration of approval.

Exception(s): Requests must be submitted to the Santa Fe Environmental Bureau office for consideration of approval.

10. **Siting Criteria (regarding permitting):** 19.15.17.10 NMAC
Instructions: The applicant must demonstrate compliance for each siting criteria below in the application. Recommendations of acceptable source material are provided below. Requests regarding changes to certain siting criteria may require administrative approval from the appropriate district office or may be considered an exception which must be submitted to the Santa Fe Environmental Bureau office for consideration of approval. Applicant must attach justification for request. Please refer to 19.15.17.10 NMAC for guidance. Siting criteria does not apply to drying pads or above-grade tanks associated with a closed-loop system.

Ground water is less than 50 feet below the bottom of the temporary pit, permanent pit, or below-grade tank. - NM Office of the State Engineer - iWATERS database search; USGS; Data obtained from nearby wells	<input type="checkbox"/> Yes <input type="checkbox"/> No UNKNOWN
Within 300 feet of a continuously flowing watercourse, or 200 feet of any other significant watercourse or lakebed, sinkhole, or playa lake (measured from the ordinary high-water mark). - Topographic map; Visual inspection (certification) of the proposed site	<input type="checkbox"/> Yes <input checked="" type="checkbox"/> No
Within 300 feet from a permanent residence, school, hospital, institution, or church in existence at the time of initial application. (Applies to temporary, emergency, or cavitation pits and below-grade tanks) - Visual inspection (certification) of the proposed site; Aerial photo; Satellite image	<input type="checkbox"/> Yes <input checked="" type="checkbox"/> No <input type="checkbox"/> NA
Within 1000 feet from a permanent residence, school, hospital, institution, or church in existence at the time of initial application. (Applies to permanent pits) - Visual inspection (certification) of the proposed site; Aerial photo; Satellite image	<input type="checkbox"/> Yes <input type="checkbox"/> No <input checked="" type="checkbox"/> NA
Within 500 horizontal feet of a private, domestic fresh water well or spring that less than five households use for domestic or stock watering purposes, or within 1000 horizontal feet of any other fresh water well or spring, in existence at the time of initial application. - NM Office of the State Engineer - iWATERS database search; Visual inspection (certification) of the proposed site	<input type="checkbox"/> Yes <input checked="" type="checkbox"/> No
Within incorporated municipal boundaries or within a defined municipal fresh water well field covered under a municipal ordinance adopted pursuant to NMSA 1978, Section 3-27-3, as amended. - Written confirmation or verification from the municipality; Written approval obtained from the municipality	<input type="checkbox"/> Yes <input checked="" type="checkbox"/> No
Within 500 feet of a wetland. - US Fish and Wildlife Wetland Identification map; Topographic map; Visual inspection (certification) of the proposed site	<input type="checkbox"/> Yes <input checked="" type="checkbox"/> No
Within the area overlying a subsurface mine. - Written confirmation or verification or map from the NM EMNRD-Mining and Mineral Division	<input type="checkbox"/> Yes <input checked="" type="checkbox"/> No
Within an unstable area. - Engineering measures incorporated into the design; NM Bureau of Geology & Mineral Resources; USGS; NM Geological Society; Topographic map	<input type="checkbox"/> Yes <input checked="" type="checkbox"/> No
Within a 100-year floodplain. - FEMA map	<input type="checkbox"/> Yes <input checked="" type="checkbox"/> No

11. **Temporary Pits, Emergency Pits, and Below-grade Tanks Permit Application Attachment Checklist:** Subsection B of 19.15.17.9 NMAC
Instructions: Each of the following items must be attached to the application. Please indicate, by a check mark in the box, that the documents are attached.

- Hydrogeologic Report (Below-grade Tanks) - based upon the requirements of Paragraph (4) of Subsection B of 19.15.17.9 NMAC
- Hydrogeologic Data (Temporary and Emergency Pits) - based upon the requirements of Paragraph (2) of Subsection B of 19.15.17.9 NMAC
- Siting Criteria Compliance Demonstrations - based upon the appropriate requirements of 19.15.17.10 NMAC
- Design Plan - based upon the appropriate requirements of 19.15.17.11 NMAC
- Operating and Maintenance Plan - based upon the appropriate requirements of 19.15.17.12 NMAC
- Closure Plan (Please complete Boxes 14 through 18, if applicable) - based upon the appropriate requirements of Subsection C of 19.15.17.9 NMAC and 19.15.17.13 NMAC
- Previously Approved Design (attach copy of design) API Number: _____ or Permit Number: _____

12. **Closed-loop Systems Permit Application Attachment Checklist:** Subsection B of 19.15.17.9 NMAC
Instructions: Each of the following items must be attached to the application. Please indicate, by a check mark in the box, that the documents are attached.

- Geologic and Hydrogeologic Data (only for on-site closure) - based upon the requirements of Paragraph (3) of Subsection B of 19.15.17.9
- Siting Criteria Compliance Demonstrations (only for on-site closure) - based upon the appropriate requirements of 19.15.17.10 NMAC
- Design Plan - based upon the appropriate requirements of 19.15.17.11 NMAC
- Operating and Maintenance Plan - based upon the appropriate requirements of 19.15.17.12 NMAC
- Closure Plan (Please complete Boxes 14 through 18, if applicable) - based upon the appropriate requirements of Subsection C of 19.15.17.9 NMAC and 19.15.17.13 NMAC
- Previously Approved Design (attach copy of design) API Number: _____
- Previously Approved Operating and Maintenance Plan API Number: _____ (*Applies only to closed-loop system that use above ground steel tanks or haul-off bins and propose to implement waste removal for closure*)

13. **Permanent Pits Permit Application Checklist:** Subsection B of 19.15.17.9 NMAC
Instructions: Each of the following items must be attached to the application. Please indicate, by a check mark in the box, that the documents are attached.

- Hydrogeologic Report - based upon the requirements of Paragraph (1) of Subsection B of 19.15.17.9 NMAC
- Siting Criteria Compliance Demonstrations - based upon the appropriate requirements of 19.15.17.10 NMAC
- Climatological Factors Assessment
- Certified Engineering Design Plans - based upon the appropriate requirements of 19.15.17.11 NMAC
- Dike Protection and Structural Integrity Design - based upon the appropriate requirements of 19.15.17.11 NMAC
- Leak Detection Design - based upon the appropriate requirements of 19.15.17.11 NMAC
- Liner Specifications and Compatibility Assessment - based upon the appropriate requirements of 19.15.17.11 NMAC
- Quality Control/Quality Assurance Construction and Installation Plan
- Operating and Maintenance Plan - based upon the appropriate requirements of 19.15.17.12 NMAC
- Freeboard and Overtopping Prevention Plan - based upon the appropriate requirements of 19.15.17.11 NMAC
- Nuisance or Hazardous Odors, including H₂S, Prevention Plan
- Emergency Response Plan
- Oil Field Waste Stream Characterization
- Monitoring and Inspection Plan
- Erosion Control Plan
- Closure Plan - based upon the appropriate requirements of Subsection C of 19.15.17.9 NMAC and 19.15.17.13 NMAC

14. **Proposed Closure:** 19.15.17.13 NMAC
Instructions: Please complete the applicable boxes, Boxes 14 through 18, in regards to the proposed closure plan.

- Type: Drilling Workover Emergency Cavitation P&A Permanent Pit Below-grade Tank Closed-loop System
 Alternative
- Proposed Closure Method: Waste Excavation and Removal ✓
 Waste Removal (Closed-loop systems only)
 On-site Closure Method (Only for temporary pits and closed-loop systems)
 In-place Burial On-site Trench Burial
 Alternative Closure Method (Exceptions must be submitted to the Santa Fe Environmental Bureau for consideration)

15. **Waste Excavation and Removal Closure Plan Checklist:** (19.15.17.13 NMAC) *Instructions: Each of the following items must be attached to the closure plan. Please indicate, by a check mark in the box, that the documents are attached.*

- Protocols and Procedures - based upon the appropriate requirements of 19.15.17.13 NMAC
- Confirmation Sampling Plan (if applicable) - based upon the appropriate requirements of Subsection F of 19.15.17.13 NMAC
- Disposal Facility Name and Permit Number (for liquids, drilling fluids and drill cuttings)
- Soil Backfill and Cover Design Specifications - based upon the appropriate requirements of Subsection H of 19.15.17.13 NMAC
- Re-vegetation Plan - based upon the appropriate requirements of Subsection I of 19.15.17.13 NMAC
- Site Reclamation Plan - based upon the appropriate requirements of Subsection G of 19.15.17.13 NMAC

16. Waste Removal Closure For Closed-loop Systems That Utilize Above Ground Steel Tanks or Haul-off Bins Only: (19.15.17.13.D NMAC)
Instructions: Please identify the facility or facilities for the disposal of liquids, drilling fluids and drill cuttings. Use attachment if more than two facilities are required.

Disposal Facility Name: _____ Disposal Facility Permit Number: _____
 Disposal Facility Name: _____ Disposal Facility Permit Number: _____

Will any of the proposed closed-loop system operations and associated activities occur on or in areas that *will not* be used for future service and operations?
 Yes (If yes, please provide the information below) No

Required for impacted areas which will not be used for future service and operations:

Soil Backfill and Cover Design Specifications - based upon the appropriate requirements of Subsection H of 19.15.17.13 NMAC
 Re-vegetation Plan - based upon the appropriate requirements of Subsection I of 19.15.17.13 NMAC
 Site Reclamation Plan - based upon the appropriate requirements of Subsection G of 19.15.17.13 NMAC

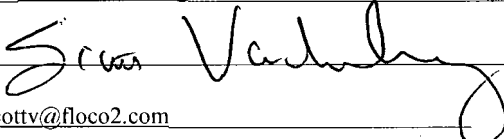
17. Siting Criteria (regarding on-site closure methods only): 19.15.17.10 NMAC
Instructions: Each siting criteria requires a demonstration of compliance in the closure plan. Recommendations of acceptable source material are provided below. Requests regarding changes to certain siting criteria may require administrative approval from the appropriate district office or may be considered an exception which must be submitted to the Santa Fe Environmental Bureau office for consideration of approval. Justifications and/or demonstrations of equivalency are required. Please refer to 19.15.17.10 NMAC for guidance.

Ground water is less than 50 feet below the bottom of the buried waste. - NM Office of the State Engineer - iWATERS database search; USGS; Data obtained from nearby wells	<input type="checkbox"/> Yes <input type="checkbox"/> No <input type="checkbox"/> NA
Ground water is between 50 and 100 feet below the bottom of the buried waste - NM Office of the State Engineer - iWATERS database search; USGS; Data obtained from nearby wells	<input type="checkbox"/> Yes <input type="checkbox"/> No <input type="checkbox"/> NA
Ground water is more than 100 feet below the bottom of the buried waste. - NM Office of the State Engineer - iWATERS database search; USGS; Data obtained from nearby wells	<input type="checkbox"/> Yes <input type="checkbox"/> No <input type="checkbox"/> NA
Within 300 feet of a continuously flowing watercourse, or 200 feet of any other significant watercourse or lakebed, sinkhole, or playa lake (measured from the ordinary high-water mark). - Topographic map; Visual inspection (certification) of the proposed site	<input type="checkbox"/> Yes <input type="checkbox"/> No
Within 300 feet from a permanent residence, school, hospital, institution, or church in existence at the time of initial application. - Visual inspection (certification) of the proposed site; Aerial photo; Satellite image	<input type="checkbox"/> Yes <input type="checkbox"/> No
Within 500 horizontal feet of a private, domestic fresh water well or spring that less than five households use for domestic or stock watering purposes, or within 1000 horizontal feet of any other fresh water well or spring, in existence at the time of initial application. - NM Office of the State Engineer - iWATERS database; Visual inspection (certification) of the proposed site	<input type="checkbox"/> Yes <input type="checkbox"/> No
Within incorporated municipal boundaries or within a defined municipal fresh water well field covered under a municipal ordinance adopted pursuant to NMSA 1978, Section 3-27-3, as amended. - Written confirmation or verification from the municipality; Written approval obtained from the municipality	<input type="checkbox"/> Yes <input type="checkbox"/> No
Within 500 feet of a wetland. - US Fish and Wildlife Wetland Identification map; Topographic map; Visual inspection (certification) of the proposed site	<input type="checkbox"/> Yes <input type="checkbox"/> No
Within the area overlying a subsurface mine. - Written confirmation or verification or map from the NM EMNRD-Mining and Mineral Division	<input type="checkbox"/> Yes <input type="checkbox"/> No
Within an unstable area. - Engineering measures incorporated into the design; NM Bureau of Geology & Mineral Resources; USGS; NM Geological Society; Topographic map	<input type="checkbox"/> Yes <input type="checkbox"/> No
Within a 100-year floodplain. - FEMA map	<input type="checkbox"/> Yes <input type="checkbox"/> No

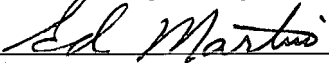
18. On-Site Closure Plan Checklist: (19.15.17.13 NMAC) **Instructions:** Each of the following items must be attached to the closure plan. Please indicate, by a check mark in the box, that the documents are attached.

Siting Criteria Compliance Demonstrations - based upon the appropriate requirements of 19.15.17.10 NMAC
 Proof of Surface Owner Notice - based upon the appropriate requirements of Subsection F of 19.15.17.13 NMAC
 Construction/Design Plan of Burial Trench (if applicable) based upon the appropriate requirements of 19.15.17.11 NMAC
 Construction/Design Plan of Temporary Pit (for in-place burial of a drying pad) - based upon the appropriate requirements of 19.15.17.11 NMAC
 Protocols and Procedures - based upon the appropriate requirements of 19.15.17.13 NMAC
 Confirmation Sampling Plan (if applicable) - based upon the appropriate requirements of Subsection F of 19.15.17.13 NMAC
 Waste Material Sampling Plan - based upon the appropriate requirements of Subsection F of 19.15.17.13 NMAC
 Disposal Facility Name and Permit Number (for liquids, drilling fluids and drill cuttings or in case on-site closure standards cannot be achieved)
 Soil Cover Design - based upon the appropriate requirements of Subsection H of 19.15.17.13 NMAC
 Re-vegetation Plan - based upon the appropriate requirements of Subsection I of 19.15.17.13 NMAC
 Site Reclamation Plan - based upon the appropriate requirements of Subsection G of 19.15.17.13 NMAC

19. **Operator Application Certification:**
 I hereby certify that the information submitted with this application is true, accurate and complete to the best of my knowledge and belief.

Name (Print): Scott Vanderburg Title: President
 Signature:  Date: 4/16/09
 e-mail address: Scottv@floc2.com Telephone: 432-638-6455

20. **OCD Approval:** Permit Application (including closure plan) Closure Plan (only) OCD Conditions (see attachment)

OCD Representative Signature:  Approval Date: 5/4/09
 Title: **DISTRICT SUPERVISOR** OCD Permit Number: _____

21. **Closure Report (required within 60 days of closure completion):** Subsection K of 19.15.17.13 NMAC
Instructions: Operators are required to obtain an approved closure plan prior to implementing any closure activities and submitting the closure report. The closure report is required to be submitted to the division within 60 days of the completion of the closure activities. Please do not complete this section of the form until an approved closure plan has been obtained and the closure activities have been completed.

Closure Completion Date: _____

22. **Closure Method:**
 Waste Excavation and Removal On-Site Closure Method Alternative Closure Method Waste Removal (Closed-loop systems only)
 If different from approved plan, please explain.

23. **Closure Report Regarding Waste Removal Closure For Closed-loop Systems That Utilize Above Ground Steel Tanks or Haul-off Bins Only:**
Instructions: Please identify the facility or facilities for where the liquids, drilling fluids and drill cuttings were disposed. Use attachment if more than two facilities were utilized.

Disposal Facility Name: _____ Disposal Facility Permit Number: _____
 Disposal Facility Name: _____ Disposal Facility Permit Number: _____

Were the closed-loop system operations and associated activities performed on or in areas that *will not* be used for future service and operations?
 Yes (If yes, please demonstrate compliance to the items below) No

Required for impacted areas which will not be used for future service and operations:
 Site Reclamation (Photo Documentation)
 Soil Backfilling and Cover Installation
 Re-vegetation Application Rates and Seeding Technique

24. **Closure Report Attachment Checklist:** *Instructions: Each of the following items must be attached to the closure report. Please indicate, by a check mark in the box, that the documents are attached.*

Proof of Closure Notice (surface owner and division)
 Proof of Deed Notice (required for on-site closure)
 Plot Plan (for on-site closures and temporary pits)
 Confirmation Sampling Analytical Results (if applicable)
 Waste Material Sampling Analytical Results (required for on-site closure)
 Disposal Facility Name and Permit Number
 Soil Backfilling and Cover Installation
 Re-vegetation Application Rates and Seeding Technique
 Site Reclamation (Photo Documentation)

On-site Closure Location: Latitude _____ Longitude _____ NAD: 1927 1983

25. **Operator Closure Certification:**
 I hereby certify that the information and attachments submitted with this closure report is true, accurate and complete to the best of my knowledge and belief. I also certify that the closure complies with all applicable closure requirements and conditions specified in the approved closure plan.

Name (Print): _____ Title: _____
 Signature: _____ Date: _____
 e-mail address: _____ Telephone: _____

District I
 1625 N. French Dr., Hobbs, NM 88240
 District II
 1301 W. Grand Avenue, Artesia, NM 88210
 District III
 1000 Rio Brazos Rd., Aztec, NM 87410
 District IV
 1220 S. St. Francis Dr., Santa Fe, NM 87505

State of New Mexico
 Energy, Minerals & Natural Resources Department
 OIL CONSERVATION DIVISION
 1220 South St. Francis Dr.
 Santa Fe, NM 87505

Form C-102
 Revised October 12, 2005
 Submit to Appropriate District Office
 State Lease-4 Copies
 Fee Lease-3 Copies

AMENDED REPORT

WELL LOCATION AND ACREAGE DEDICATION PLAT

API Number	Pool Code 96010	Pool Name Arava Dome
Property Code	Property Name LIBBY MINERALS LLC 1931	Well Number 5-1-K
OCRD No. 251905	Operator Name RELIANT EXPLORATION & PRODUCTION, LLC.	Elevation 4474'

Surface Location

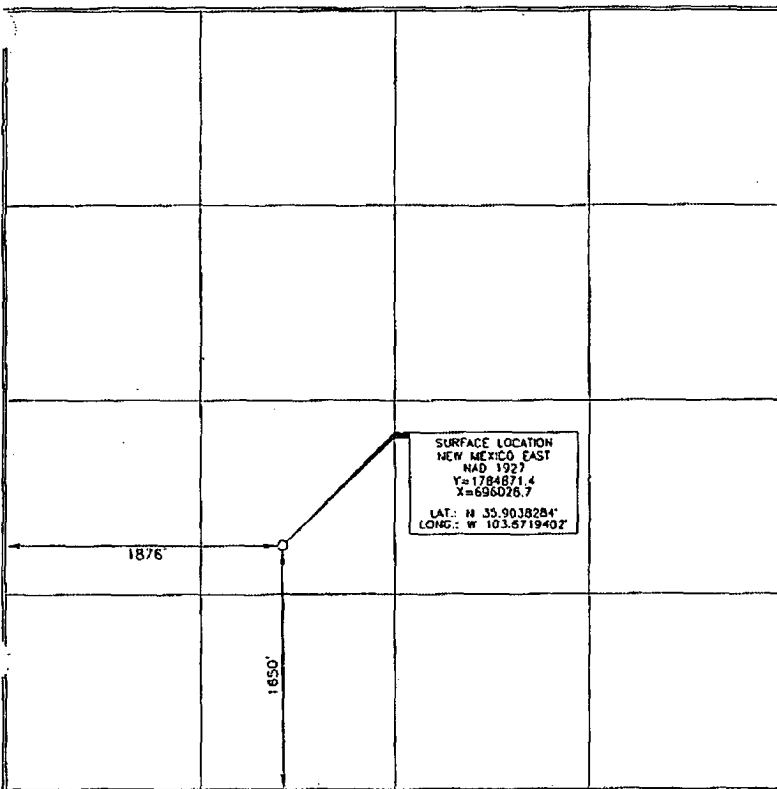
UL or lot no.	Section	Township	Range	Lot Idn	Feet from the	North/South line	Feet from the	East/West line	County
K	5	19 NORTH	31 EAST, N.M.P.M.		1650'	SOUTH	1876'	WEST	HARDING

Bottom Hole Location If Different From Surface

UL or lot no.	Section	Township	Range	Lot Idn	Feet from the	North/South line	Feet from the	East/West line	County

Dedicated Acres	Joint or Infill	Consolidation Code	Order No.
-----------------	-----------------	--------------------	-----------

No allowable will be assigned to this completion until all interests have been consolidated or a non-standard unit has been approved by the division.



OPERATOR CERTIFICATION

I hereby certify that the information contained herein is true and complete to the best of my knowledge and belief, and that this organization either owns a working interest or unleased mineral interest in the land including the proposed bottom hole location or has a right to drill this well at this location pursuant to a contract with an owner of such a mineral or working interest, or to a voluntary pooling agreement or a compulsory pooling order heretofore entered by the division.

Signature _____ Date _____

Printed Name _____

SURVEYOR CERTIFICATION

I hereby certify that the location shown on this plat was taken from field notes of a survey made by me or under my supervision, and that the same is true and correct to the best of my belief.

15079
 DECEMBER 18 2007
 Date of Survey

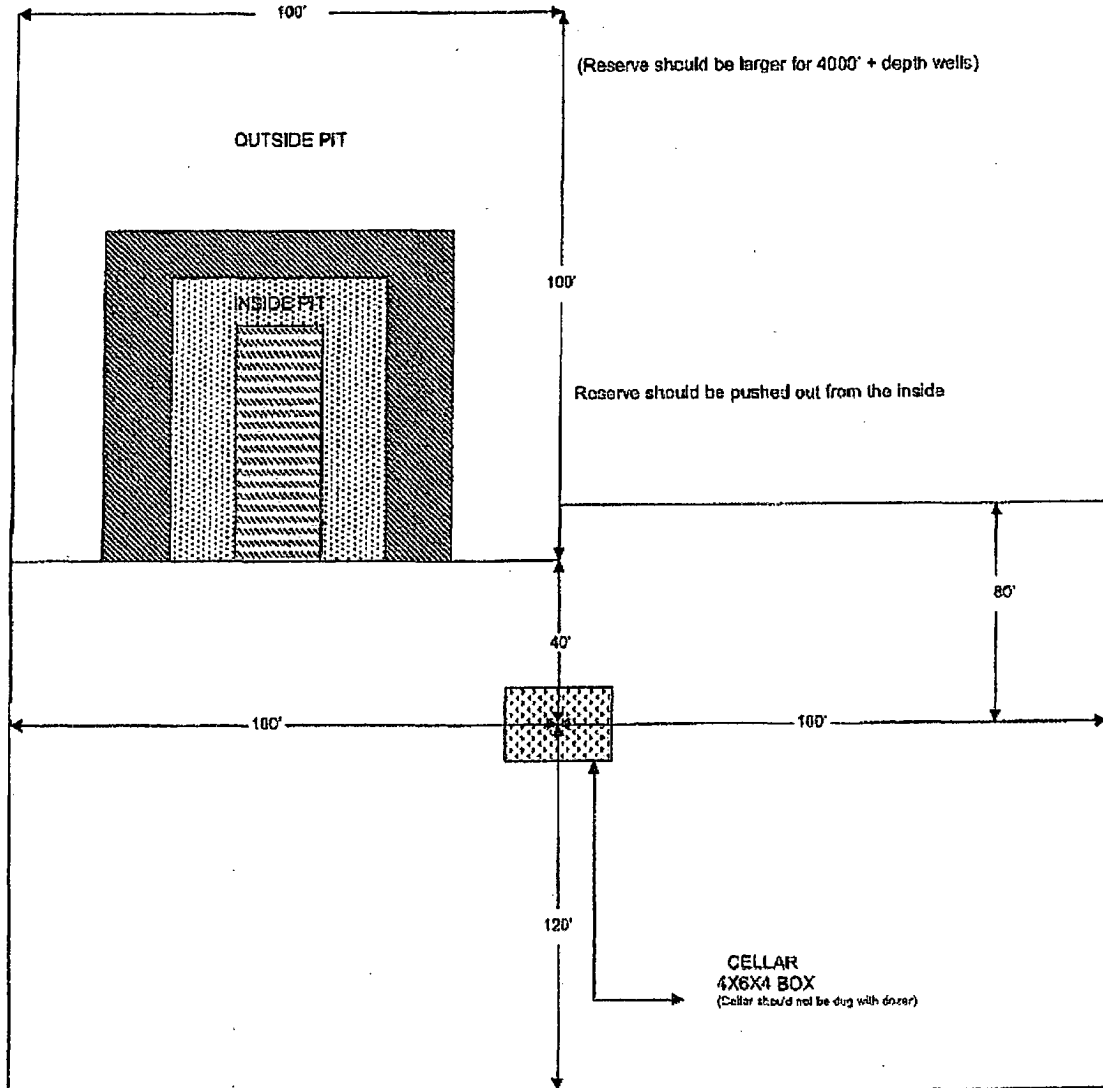
Signature and Seal of Professional Surveyor

Tommy J. O'Neil 2/13/2008
 Certificate Number 15079

WOF 071217WL-b (Rev. A) (KA)



LOCATION SPECIFICATION FOR STEEL PITS
(PICTURE NOT TO SCALE)



Cellar can be 4X4X4 if using a screw-on wellhead

Hydrogeological Data
(Based on Appropriate Requirements of 19.15.17.11 NMAC)

Well Name:

Libby Minerals LLC 1931 No. 5-1-K

Topography:

This location is within the Great Plains Physiographic Province, with flat to rolling prairie and scattered hills and bluffs. The land gradually rises westward, giving way to the frontal ranges of the Rocky Mountains. Elevation of the referenced well is approximately 4474 feet MSL. The location is on a gentle western slope, at mid elevations overlooking Úte Creek to the west (see Siting Criteria Map II, attached).

Soils:

Soils within this region have been mapped by the Natural Resources Conservation Service. The following soil unit occurs within the proposed project area:

Vernon-Shale outcrop complex, 1 to 9% slopes:

This soil type is found in uplands at 3800 to 5000 feet. It is made up of 70% Vernon and similar soils and 25% Shale rock outcrop.

- Vernon soils, found on summits of structural benches, are formed from residuum weathered from shale. Slope is typically 1 to 5%. These soils are well drained and do not pond or flood. Available water capacity is very low, and capacity of the most limiting layer to transmit water is very low to moderately low. The typical profile is silty clay loam (0 to 3 inches), silty clay (3 to 10 inches), channery clay (10 to 14 inches), and bedrock (16 to 60 inches).
- Shale rock outcrop, found on 1 to 9% slopes, does not pond or flood. Capacity of the most limiting layer to transmit water is very low to moderately high. Bedrock is typically found from 0 to 60 inches.

Source: United States Department of Agriculture, Natural Resources Conservation Service. 2008. Soil Survey Geographic (SSURGO) Database for Harding County, New Mexico. Accessed February 2009.

Geology:

The geology of this region has been mapped by the United States Geological Survey. Geology of this area is mapped as Alluvium, upper and middle Quaternary.

Source: United States Geological Survey. Updated December 2007. Preliminary Integrated Geologic Map Databases for the United States: Central States: Montana, Wyoming, Colorado, New Mexico, North Dakota, South Dakota, Nebraska, Kansas, Oklahoma, Texas, Iowa, Missouri, Arkansas, and Louisiana. <http://tin.er.usgs.gov/geology/state/state.php?state=NM>. Accessed February 2009.

Surface Hydrology:

Northeastern New Mexico is drained by the Arkansas River and its tributary, the Canadian River. Topographic maps indicate that the pit is approximately 300 feet from Ute Creek, a continuously flowing tributary of the Canadian River (see Siting Criteria Map II, attached). Thus, field measurements were taken. These physical measurements indicate that the pit would actually be 704 feet east of the creek.

Ground Water Hydrology:

This location is within central Harding County, New Mexico, within the Great Plains Physiographic Province. The High Plains aquifer extends westward into eastern Harding County, but in the proposed project region there is no principal aquifer. Aquifers do not exist here, yield too little water to wells to be significant, or yield sufficient water to supply local requirements but are not extensive enough to be classified as a major aquifer.

Depth to groundwater is unknown at this location. The nearest water well identified on iWaters, TU 1363, was approximately 1.8 miles north of the site. Depth to water at this well was 24 feet. The next nearest well was approximately 3.9 miles from the pit; no water depth data was available for that well (see Siting Criteria Map I and iWaters reports, attached).

Source: United States Geological Survey. 2001. Groundwater Atlas of the United States: Arizona, Colorado, New Mexico and Utah. USGS Publication HA 730-C; <http://capp.water.usgs.gov>.

New Mexico Office of the State Engineer. August 2008. iWaters database.
<http://iwaters.ose.state.nm.us:7001/iWATERS/>. Internet accessed February 2009.

**Siting Criteria Compliance Demonstrations
(Based on Appropriate Requirements of 19.15.17.10 NMAC)**

Depth to groundwater (should not be less than 50 feet):

Depth to groundwater is unknown at this location. The nearest water well identified on iWaters, TU 1363, was approximately 1.8 miles north of the site. Depth to water at this well was 24 feet. The next nearest well was approximately 3.9 miles from the pit; no water depth data was available for that well (see Siting Criteria Map I and iWaters reports, attached).

Distance to watercourse (should not be within 300 feet of a continuously flowing watercourse or 200 feet of any other significant watercourse or lakebed, sinkhole, or playa lake):

Topographic maps indicate that the pit is approximately 300 feet from Ute Creek, a continuously flowing watercourse (see Siting Criteria Map II, attached). Thus, field measurements were taken. These measurements indicate that the pit would actually be 704 feet east of the creek.

Distance to buildings (should not be within 300 feet of a permanent residence, school, hospital, institution, or church):

The pit would not be within 300 feet of any of these locations (see Siting Criteria Map I, attached).

Distance to springs or wells (should not be within 500 feet of a private, domestic fresh water well or spring used by less than five (5) households or within 1000 feet of any other fresh water well or spring):

The pit would not be within 500 feet of any well or spring (see Siting Criteria Map I, attached).

Presence within incorporated area (should not be within incorporated municipal boundaries or within defined municipal fresh water well field covered under municipal ordinance):

The pit would not be within an incorporated area or municipal fresh water well field (see Siting Criteria Map I, attached).

Distance to wetlands (should not be within 500 feet):

The USFWS has not mapped this location for wetlands (see Wetlands map, attached). However, topographic and ortho data indicate that the location is not near a wetland.

Location above subsurface mine (should not overlie a subsurface mine):

The pit would not overlie a mine (see Mines, Mills, and Quarries map, attached).

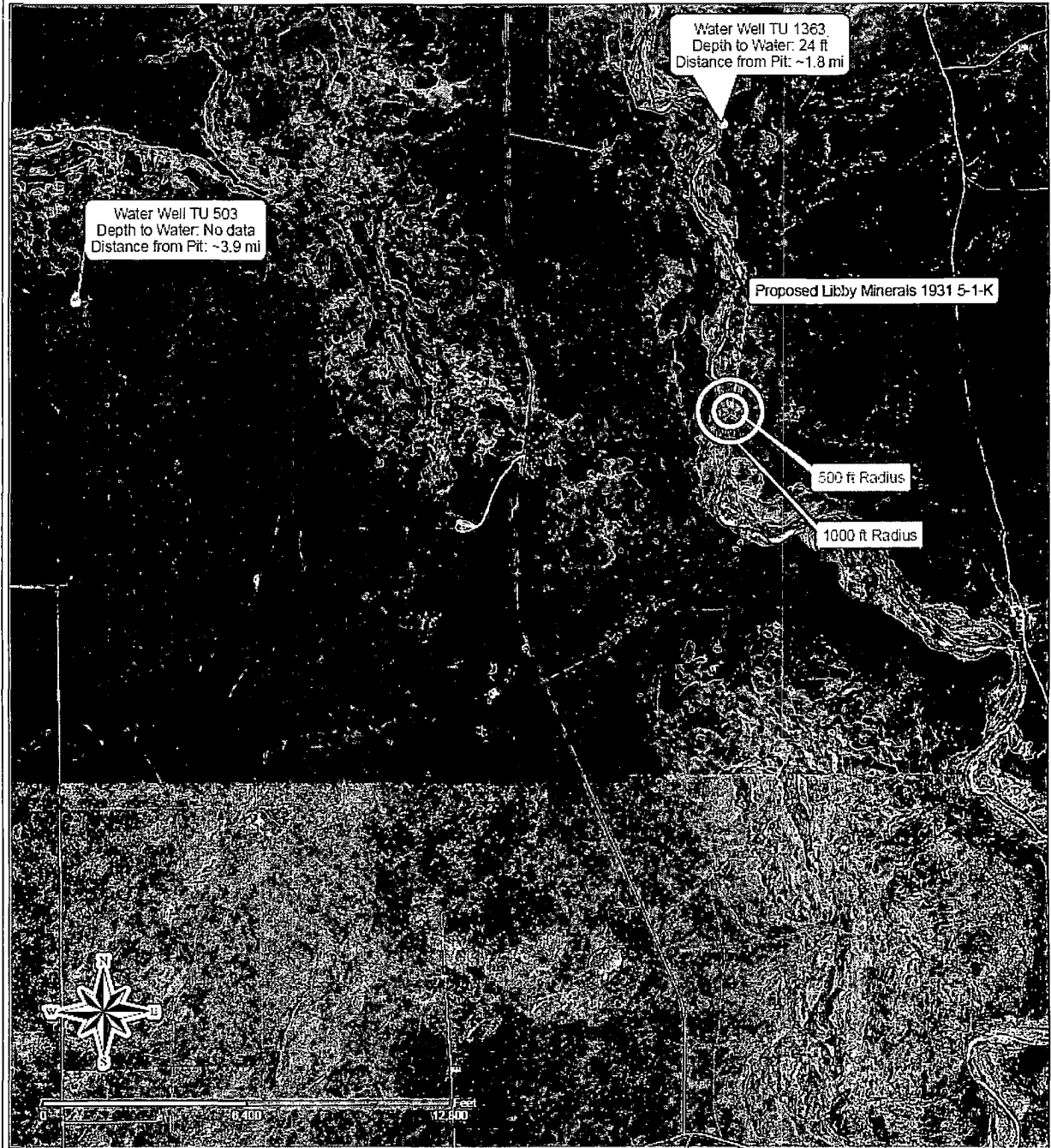
Presence within unstable area (should not be within an unstable area):

The location would not be within an unstable area (See Siting Criteria Map II, attached).

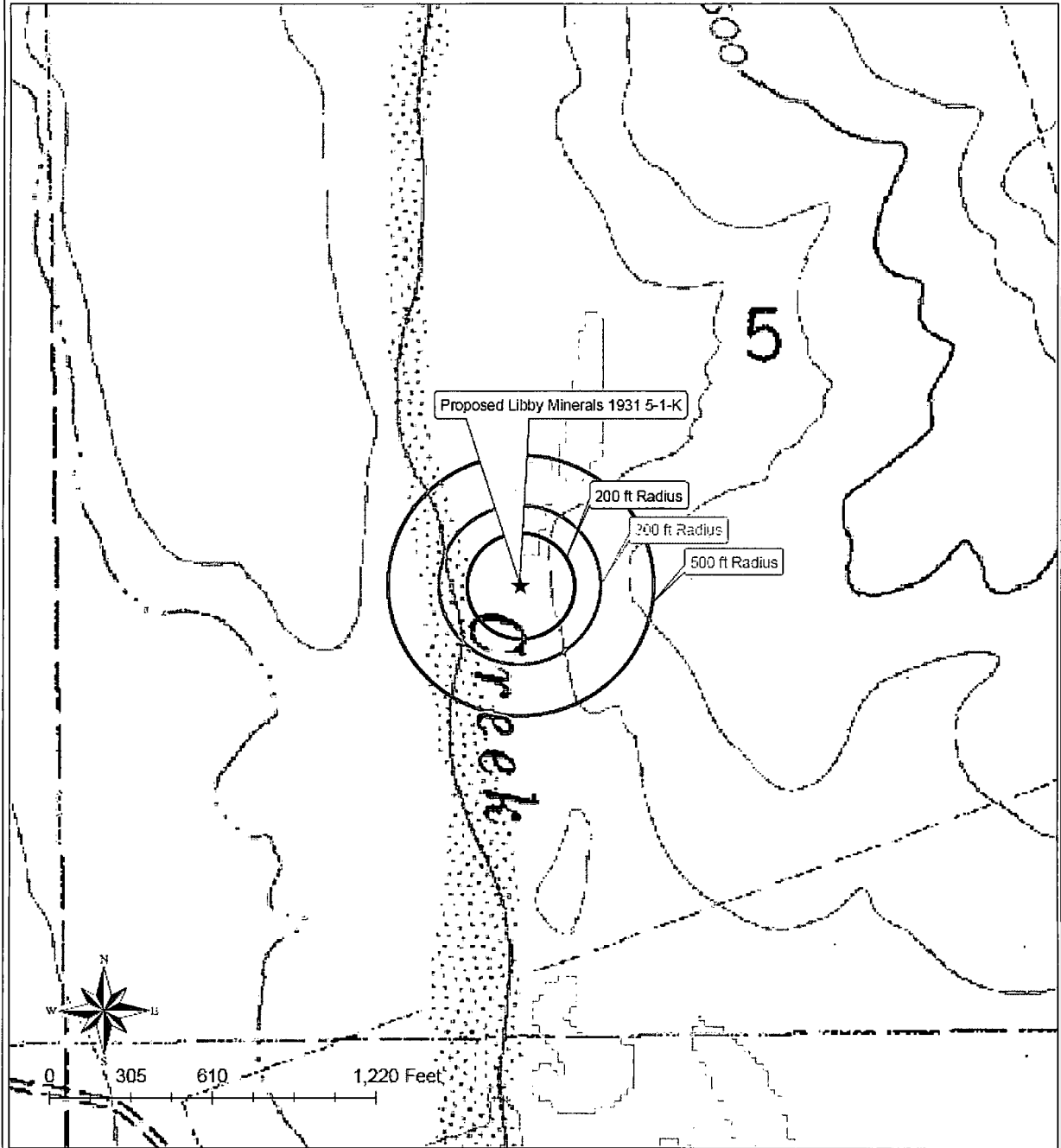
Presence within floodplain (should not be within a 100-year floodplain):

The location has not been mapped by FEMA (see FEMA printout, attached). However, topographic maps, soils data, and ortho maps indicate that the location is not within a floodplain.

Siting Criteria Map I
Water Wells
Reliant Exploration & Production, LLC
Libby Minerals LLC 1931 No. 5-1-K
T19N, R31E, Section 05, NMPM
Harding County, New Mexico



Siting Criteria Map II
Topographic Features
Reliant Exploration & Production, LLC
Libby Minerals LLC 1931 No. 5-1-K
T19N, R31E, Section 05, NMPM
Harding County, New Mexico



DEPTH-TO-WATER DATA

New Mexico Office of the State Engineer
POD Reports and Downloads

Township: Range: Sections:

NAD27 X: Y: Zone: Search Radius:

County: Basin: Number: Suffix:

Owner Name: (First) (Last) Non-Domestic Domestic All

POD / Surface Data Report
 Avg Depth to Water Report
 Water Column Report

POD / SURFACE DATA REPORT 02/17/2009

(quarters are 1=NW 2=NE 3=SW 4=SE)
 (quarters are biggest to smallest)

POD Number	Tws	Rng	Sec	q	q	q	Zone	X	Y	Depth Well	Depth Water	Water (in feet) Column
------------	-----	-----	-----	---	---	---	------	---	---	------------	-------------	------------------------

No Records found, try again

New Mexico Office of the State Engineer
POD Reports and Downloads

Township: Range: Sections:

NAD27 X: Y: Zone: Search Radius:

County: Basin: Number: Suffix:

Owner Name: (First) (Last) Non-Domestic Domestic All

POD / Surface Data Report
 Avg Depth to Water Report
 Water Column Report

WATER COLUMN REPORT 02/17/2009

(quarters are 1=NW 2=NE 3=SW 4=SE)
 (quarters are biggest to smallest)

POD Number	Tws	Rng	Sec	q	q	q	Zone	X	Y	Depth Well	Depth Water	Water (in feet) Column
TU 01363	20N	31E	29	3	4	3				160	24	136

Record Count: 1

New Mexico Office of the State Engineer
 POD Reports and Downloads

Township: Range: Sections:

NAD27 X: Y: Zone: Search Radius:

County: Basin: Number: Suffix:

Owner Name: (First) (Last) Non-Domestic Domestic All

POD / Surface Data Report Avg Depth to Water Report Water Column Report

WATER COLUMN REPORT 02/17/2009

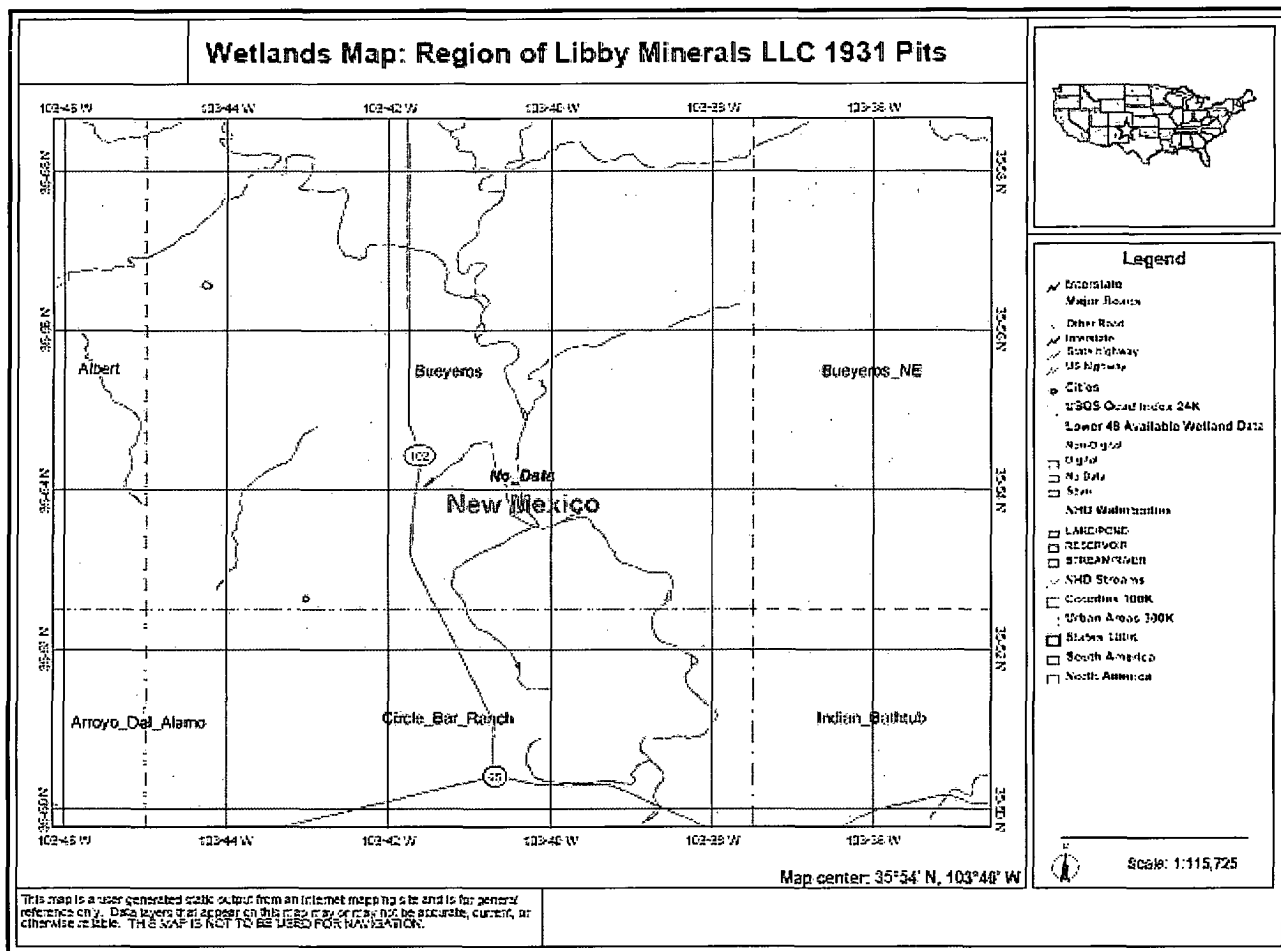
(quarters are 1=NW 2=NE 3=SW 4=SE)
 (quarters are biggest to smallest)

POD Number	Tws	Rng	Sec	q	q	q	Zone	X	Y	Depth Well	Depth Water	Water (in feet) Column
TU 00513	19N	30E	04	2	3	1				60		
TU 01698 POD1	19N	30E	04	3	4	1				85	70	15

Record Count: 2

Source: New Mexico Office of the State Engineer. August 2008. iWaters database.
<http://iwaters.ose.state.nm.us:7001/iWATERS/>. Internet accessed February 2009.

WETLAND DATA



Source: U.S. Fish and Wildlife Service National Wetlands Inventory. Updated March, 2009.
<http://www.fws.gov/wetlands/Data/mapper.html>. Accessed March 2009.

100-Year Floodplain Data

FEMA Map Service Center - FEMA Issued Flood Maps

<http://msc.fema.gov/webapp/wcs/stores/servlet/CategoryDisplay?store...>



[Product Catalog](#) | [Map Search](#) | [Quick Order](#) | [Digital Post Office](#) | [Help](#)
Home > Product Catalog > FEMA Issued Flood Maps

[Log on](#)

FEMA Issued Flood Maps

State : NEW MEXICO

County : HARDING COUNTY

Community : HARDING CO *

Sorry there are no items to display for this State, County and Community.

* designates unincorporated areas

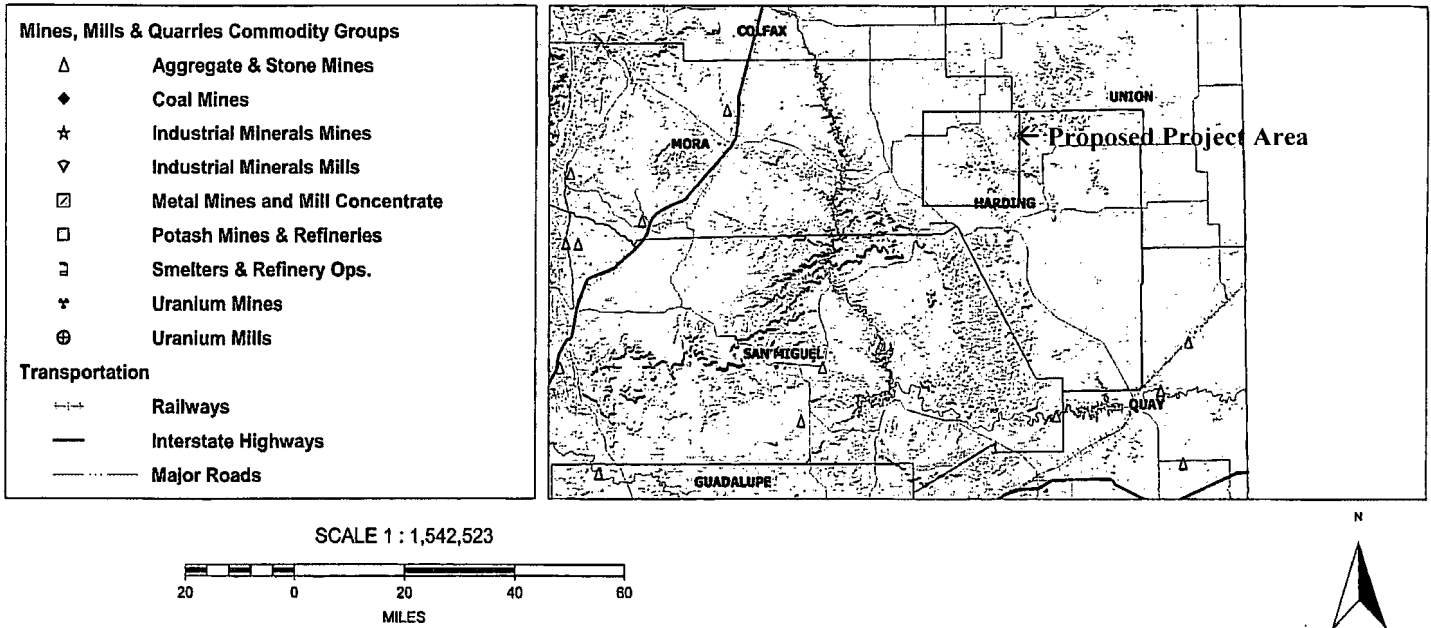
[FEMA.gov](#) | [Accessibility](#) | [Privacy Policy](#) | [FAQ](#) | [Site Help](#) | [Site Index](#) | [Contact Us](#)

FEMA Map Service Center, P.O. Box 1038 Jessup, Maryland 20794-1038 Phone: (800) 358-9016
Adobe Acrobat Reader required to view certain documents. [Click here to download.](#)

Source: FEMA Map Service Center.

<http://msc.fema.gov/webapp/wcs/stores/servlet/FemaWelcomeView?storeId=10001&catalogId=10001&langId=-1>. Accessed February 2009.

MMQonline Public Version



<http://www.emnrd.state.nm.us/MMD/MMQonline/MMQonline-PUBLIC-PROD.mwf>

Tuesday, March 31, 2009 11:13 AM

Source: New Mexico Energy, Minerals and Natural Resources Department, Division of Mining and Minerals. Database. 2008. <http://www.emnrd.state.nm.us/MMD/MRRS/MinesMillsQuarriesWebMap.htm>. Internet accessed February 2009.

Design Plan
(Based on Appropriate Requirements of 19.15.17.11 NMAC)

Design and construction specifications for this temporary pit are as follows:

- Prior to constructing the pit, topsoil would be stripped and stockpiled for use as final cover or fill at the time of closure.
- An upright sign (at least 12" x 24" with lettering at least 2" in height) would be placed conspicuously on the fence surrounding the pit, unless the site has an existing well sign (complying with 19.15.3.103 NMAC). The sign would be posted in a manner and location such that the legend can be easily read, and would contain the following information: operator's name, legal location (quarter-quarter or unit letter, section, township, and range), and emergency telephone number(s).
- If an adequate surrounding perimeter fence does not already prevent unauthorized access to the well site or facility, the pit would be fenced or enclosed in a manner that prevents unauthorized access. The fence would be at least four (4) foot in height with at least four (4) strands of barbed wire evenly spaced between the top and bottom. Fences would be maintained in good repair. During drilling or workover operations, three (3) sides of the pit would be fenced; the side adjacent to the drilling or workover rig would remain open only during such operations.
- The pit would be designed and constructed to ensure the confinement of liquids.
- The pit would be constructed with a properly constructed foundation and interior slopes consisting of a firm, unyielding base. The pit would be smooth and free of rocks, debris, sharp edges, or irregularities to prevent the liner's rupture or tearing. Slopes would be no steeper than two (2) horizontal feet to one (1) vertical foot (2H:1V).
- The pit would have a geomembrane liner with 20-mil string-reinforced LLDPE or its equivalent (approved by the division district office). This liner would be composed of an impervious, synthetic material resistant to petroleum hydrocarbons, salts, and acidic and alkaline solutions. The liner would be resistant to ultraviolet light. The liner would comply with EPA SW-846 method 9090A.
- Qualified personnel would perform field seaming. Liner seams would be minimized, particularly in corners and irregularly shaped areas. Field liner seams would be welded. Factory-welded seams would be used where possible. Prior to field seaming, liners would be overlapped four (4) to six (6) inches and would be oriented parallel to the line of maximum slope (along, not across, the slope).
- Construction would avoid excessive stress-strain on the liner.
- Geotextile would be used under the liner where needed to reduce localized stress-strain or protuberances that may compromise the liner's integrity.
- The edges of all liners would be anchored in the bottom of a compacted, earth-filled trench that is at least 18" deep.
- The liner would be protected from any fluid force or mechanical damage at any point of discharge into or suction from the pit.
- A berm, ditch, proper sloping, or other diversion would be constructed around the pit to prevent run-on of surface water. During drilled operations, the edge of the pit adjacent to the drilling or workover rig may not have protection if the pit is being used to collect liquids escaping from the rig and run-on will not result in a breach of the pit.
- The volume of the pit would not exceed 10 acre-feet, including freeboard.

Operating & Maintenance Plan
(Based on Appropriate Requirements of 19.15.17.12 NMAC)

Operating and maintenance specifications for this temporary pit are as follows:

- The pit would be maintained to contain liquids and solids, prevent contamination of fresh water, and protect public health of the environment.
- All drilling fluids would be recycled, reused, reclaimed, or disposed of in a manner approved by division rules and that prevents contamination of fresh water and protects public health and the environment.
- Hazardous waste would not be discharged into or stored in the pit.
- If the pit liner's integrity is compromised or if penetration of the liner occurs above the liquid's surface, the appropriate division district office would be notified within 48 hours of the discovery, and the liner would be repaired or replaced.
- If the pit develops a leak or if any penetration of the liner occurs below the liquid's surface, all liquid above the damake or leak line would be removed within 48 hours, the appropriate division district office would be notified within 48 hours, and the liner would be repaired or replaced.
- The injection or withdrawal of liquids from the pit would be accomplished via a header, diverter, or other hardware that prevents damage to the liner by erosion, fluid jets, or impact from installation and removal of hoses or pipes.
- Pit operation would prevent the collection of surface water run-on.
- An oil-absorbent boom or other device would be installed and maintained onsite to contain and remove oil from the pit's surface.
- Only fluids used or generated during drilling or workover processes would be discharged into the pit. The pit would remain free of miscellaneous solid waste or debris. A tank made of steel or other division district office-approved material would be used to contain hydrocarbon-based drilling fluids. Immediately after cessation of a drilling or workover operation, any visibly or measurable layer of oil would be removed from the surface of the pit.
- At least two (2) feet of freeboard would be maintained.
- The pit would be inspected at least once daily while the drilling or workover rig is onsite. Thereafter, the pit would be inspected weekly as long as liquids remain within it. An inspection log would be maintained and made available to the division district office upon request. A copy of the log would be filed with the division district office at the time of pit closure.
- All free liquids would be removed from the pit within 30 days from release of the drilling or workover rig. On form C-105 or C-103, the date of the drilling or workover rig's release would be noted. If necessary, an extension of up to three (3) months may be requested from the division district office; this extension may or may not be granted.
- Any liquids used for cavitation would be removed from the pit within 48 hours after completing cavitation. If it is not feasible to access the location within 48 hours, this would be demonstrated to the district office's satisfaction and additional time would be requested .

Closure Plan
(Based on Appropriate Requirements of Subsection C, 19.15.17.9 NMAC & 19.15.17.13 NMAC)

Closure specifications for this temporary pit are as follows:

- The pit would be closed within six (6) months from the date that the drilling or workover rig is released. If necessary, the division district office may grant an extension not to exceed three (3) months.
- All liquids from the pit would be removed prior to closure. Liquids would be disposed of at the Sundance Services, Inc. Parabo Disposal Facility (Permit No. 010003), unless they are recycled, reused, or reclaimed in a division district office-approved manner.
- All contents, including synthetic pit liners, would be excavated from the pit and transported to Sundance Services, Inc. Parabo Disposal Facility (Permit No. 010003).
- The soils beneath the pit would be tested to determine whether a release occurred. A five-point composite sample would be collected. In addition, grab samples would be gathered from any area that is wet, discolored, or showing evidence of a release. The samples would be sent to an approved laboratory and analyzed for benzene, total BTEX, TPH, the GRO and DRO combined fraction, and chlorides. The following should not be exceeded:
 - Benzene (as determined by EPA SW-846 method 8021B or 8260B or other division-approved EPA method): 0.2 mg/kg
 -
 - BTEX (as determined by EPA SW-846 method 8021B or 8260B or other division-approved EPA method): 50 mg/kg
 -
 - TPH (as determined by EPA SW-846 method 418.a or other division-approved EPA method): 2500 mg/kg
 -
 - GRO and DRO combined fraction (as determined by EPA SW-846 method 8015M): 500 mg/kg
 -
 - Chlorides (as determined by EPA method 300.1): 500 mg/kg or background concentration, whichever is greater

The division would be notified of the results on form C-141, at which point the division may require additional delineation.

- If it is determined that a release has occurred, Reliant would comply with 19.15.3.116 NMAC and 19.15.1.19 NMAC, as appropriate.
- If it is determined that a release has not occurred, or that any release doesn't exceed the above-specified concentrations, the pit excavation would be backfilled with compacted, non-waste-containing, earthen material. A division-prescribed soil cover would be constructed and the site would be recontoured and revegetated, per Subsections G, H, and I of 19.15.17.13 NMAC:
 - All areas associated with the pit that are no longer being used would be substantially restored to the condition that existed prior to oil and gas operations by placement of the soil cover (detailed below), recontouring to match original contours and surrounding topography, and revegetating (detailed below).
 - If an alternative to the revegetation requirements is required to prevent erosion, protect fresh water, or protect human health and the environment, this alternative would be proposed to the surface owner. The proposed alternative, with written documentation demonstrating that the surface owner approves the alternative, would be submitted to the division for approval.

- Soil cover would consist of the background thickness of topsoil or one (1) foot of material suitable for establishing vegetation at the site, whichever is greater.
 - Soil cover would be constructed to the site's existing grade and would prevent ponding of water and erosion of the cover material.
 - The first growing season following pit closure, all disturbed areas associated with the pit and no longer being used would be seeded or planted.
 - Seeding would be accomplished by drilling on the contour whenever practical, or by other division-approved methods. Vegetative cover equaling 70% of the native perennial vegetative cover (unimpacted by overgrazing, fire, or other damaging intrusion) would be obtained. This cover would consist of at least three (3) native plant species, including one (1) grass species but not including noxious weeds. That cover would be maintained through two (2) successive growing seasons, during which time no artificial irrigation would occur.
 - Seeding or planting would be repeated until the required vegetative cover is successfully achieved.
 - When conditions aren't favorable for the establishment of vegetation (such as during periods of drought), the division would be contacted for approval to delay seeding or planting, or for approval to use additional cultural techniques such as mulching, fertilizing, irrigating, fencing, etc.
 - The division would be notified when seeding or planting is completed, and when successful revegetation has been achieved.
- Within 60 days of closure, completion, a closure report would be submitted on form C-144, with necessary attachments, to document closure activities, including sampling results, a plot plan, and backfilling details. In this closure report, Reliant would certify that all information in the report and attachments is correct and that Reliant has complied with all applicable closure requirements and conditions specified in the approved Closure Plan. A plat of the temporary pit location would be provided on form C-105.

Reliant Exploration and Production LLC
300 N. Marienfeld, Suite 600
Midland, Texas 79701

RECEIVED
2009 APR 21 AM 11 30

April 20, 2009

VIA UPS NEXT DAY AIR

Mr. Ed Martin
District IV Supervisor
New Mexico Oil Conservation Division
1220 S. St. Francis Dr.
Santa Fe, New Mexico 87505

Re: Reliant Exploration & Production LLC
OGRID Number: 251905
Forms C-101, C-102, C-144

Dear Mr. Martin:

Reliant Exploration and Production LLC hereby submits for filing with the State of New Mexico Energy, Minerals and Natural Resources Oil Conservation Division ("OCD"), the following:

- (i) C-101, Application for Permit to Drill, Well No. 11-1-K, Section 11, Township 19 North, Range 31 East, NMPM, Harding County, NM;
- (ii) C-102, Well Location and Acreage Dedication Plat, Well No. 11-1-K, Section 11, Township 19 North, Range 31 East, NMPM, Harding County, NM;
- (iii) C-144, Application for Pit Permit, Well No. 11-1-K, Section 11, Township 19 North, Range 31 East, NMPM, Harding County, NM;
- (iv) C-101, Application for Permit to Drill, Well No. 8-1-K, Section 8, Township 19 North, Range 31 East, NMPM, Harding County, NM;
- (v) C-102, Well Location and Acreage Dedication Plat, Well No. 8-1-K, Section 8, Township 19 North, Range 31 East, NMPM, Harding County, NM;
- (vi) C-144, Application for Pit Permit, Well No. 8-1-K, Section 8, Township 19 North, Range 31 East, NMPM, Harding County, NM;

- (vii) C-101, Application for Permit to Drill, Well No. 5-1-K, Section 5, Township 19 North, Range 31 East, NMPM, Harding County, NM;
- (viii) C-102, Well Location and Acreage Dedication Plat, Well No. 5-1-K, Section 5, Township 19 North, Range 31 East, NMPM, Harding County, NM;
- (ix) C-144, Application for Pit Permit, Well No. 5-1-K, Section 5, Township 19 North, Range 31 East, NMPM, Harding County, NM;
- (x) C-101, Application for Permit to Drill, Well No. 9-1-K, Section 9, Township 19 North, Range 31 East, NMPM, Harding County, NM;
- (xi) C-102, Well Location and Acreage Dedication Plat, Well No. 9-1-K, Section 9, Township 19 North, Range 31 East, NMPM, Harding County, NM;
- (xii) C-144, Application for Pit Permit, Well No. 9-1-K, Section 9, Township 19 North, Range 31 East, NMPM, Harding County, NM;
- (xiii) C-101, Application for Permit to Drill, Well No. 10-1-K, Section 10, Township 19 North, Range 31 East, NMPM, Harding County, NM;
- (xiv) C-102, Well Location and Acreage Dedication Plat, Well No. 10-1-K, Section 10, Township 19 North, Range 31 East, NMPM, Harding County, NM;
- (xv) C-144, Application for Pit Permit, Well No. 10-1-K, Section 10, Township 19 North, Range 31 East, NMPM, Harding County, NM;
- (xvi) C-101, Application for Permit to Drill, Well No. 14-1-F, Section 14, Township 19 North, Range 31 East, NMPM, Harding County, NM;
- (xvii) C-102, Well Location and Acreage Dedication Plat, Well No. 14-1-F, Section 14, Township 19 North, Range 31 East, NMPM, Harding County, NM;

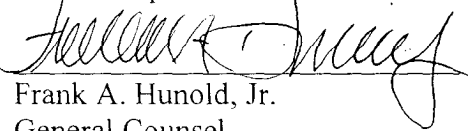
Martin
New Mexico OCD
April 20, 2009
Page 3

- (xviii) C-144, Application for Pit Permit, Well No. 14-1-F, Section 14, Township 19 North, Range 31 East, NMPM, Harding County, NM;
- (xix) C-101, Application for Permit to Drill, Well No. 15-1-F, Section 15, Township 19 North, Range 31 East, NMPM, Harding County, NM;
- (xx) C-102, Well Location and Acreage Dedication Plat, Well No. 15-1-F, Section 15, Township 19 North, Range 31 East, NMPM, Harding County, NM;
- (xxi) C-144, Application for Pit Permit, Well No. 15-1-F, Section 15, Township 19 North, Range 31 East, NMPM, Harding County, NM;
- (xxii) C-101, Application for Permit to Drill, Well No. 16-1-F, Section 16, Township 19 North, Range 31 East, NMPM, Harding County, NM;
- (xxiii) C-102, Well Location and Acreage Dedication Plat, Well No. 16-1-F, Section 16, Township 19 North, Range 31 East, NMPM, Harding County, NM;
- (xxiv) C-144, Application for Pit Permit, Well No. 16-1-F, Section 16, Township 19 North, Range 31 East, NMPM, Harding County, NM;

Please let me know if you have any questions or need additional information. Thank you.

Kindest Regards,

Reliant Exploration and Production LLC



Frank A. Hunold, Jr.

General Counsel

Tel. (432) 617-4211

Email: fhunold@reliantholdingsltd.com

Martin
New Mexico OCD
April 20, 2009
Page 4

Cc: Earl DeBrine
Scott Vanderburg
Vance Vanderburg
Freddie Vanderburg