

Stogner, Michael

From: Stogner, Michael
Sent: Wednesday, January 08, 2003 2:28 PM
To: 'Bonnie Husband'
Cc: Ezeanyim, Richard; Jones, William V; Williams, Chris; Mull, Donna; Wrotenbery, Lori; William F. Carr (E-mail)
Subject: RE: NSL State Land Sec 32 #10

I received and just now reviewed your seven page fax; however, there was no cover letter to the Division explaining why the unorthodox location is necessary for this well. Were these seven pages everything you submitted to the Santa Fe office of the Division in October? If not please fax to me everything.

Also the faxed copy of the C-102 was too light and does not reflect the 80-acre unit. Will it be a stand-up or lay-down 80. Is this an infill well to an existing unit? If so what other Saga well (s) is included. Thanks.

-----Original Message-----

From: Bonnie Husband [mailto:bhusband@sagapetroleum.com]
Sent: Wednesday, January 08, 2003 2:07 PM
To: Stogner, Michael
Subject: Re: NSL State Land Sec 32 #10

faxing 7 pages now

----- Original Message -----

From: Stogner, Michael
To: 'Bonnie Husband'
Cc: Ezeanyim, Richard ; Jones, William V ; Williams, Chris ; Mull, Donna ; Wrotenbery, Lori ; William F. Carr (E-mail)
Sent: Wednesday, January 08, 2003 2:42 PM
Subject: RE: NSL State Land Sec 32 #10

Ms. Husband,

I have reviewed the Division's files and talked with Wil Jones and others but, I'm sorry to say, I find no record of such a filing received by this office. I apologize if we misplaced or mishandled it in anyway.

If you would please fax me a copy of this application and all of the support data I will give it priority status and review it immediately.

Please use the following fax number (505) 476-3471. Also, if you will e-mail me when you are ready to transmit this filing, I will wait for it.

If there are any problems, my telephone number is (505) 476-3465.

-----Original Message-----

From: Bonnie Husband [mailto:bhusband@sagapetroleum.com]
Sent: Wednesday, January 08, 2003 11:48 AM
To: mstogner@state.nm.us
Subject: NSL State Land Sec 32 #10

Called Hobbs OCD office this am. Status of approval to drill NSL location filed 10-2-02 - Hobbs stated waiting on NSL number from your office. Letters from Apache & Brothers Production co w/no objection to application, no response from other offset operators.

2223 FSL & 860 FEL, Sec 32 (I), T18S, R38E, Lea County, proposed 7000' Drinkard well

State of New Mexico

Energy, Minerals and Natural Resources Department

DISTRICT I

P.O. Box 1888, Hobbs, NM 88241-1888

DISTRICT II

P.O. Box 2088, Artesia, NM 88211-0710

DISTRICT III

1000 Elc Branson Rd., Artesia, NM 87410

DISTRICT IV

P.O. Box 2088, Santa Fe, N.M. 87504-2088

OIL CONSERVATION DIVISION

P.O. Box 2088

Santa Fe, New Mexico 87504-2088

Form C-102

Revised February 10, 1994

Submit to Appropriate District Office

State Lease - 4 Copies

Fee Lease - 3 Copies

WELL LOCATION AND ACREAGE DEDICATION PLAT

☐ AMENDED REPORT

API Number 30-025-		Pool Code 31730	Pool Name HOBBS DRINKARD
Property Code 20363	Property Name STATE 32		Well Number 10
OGRIID No. 148967	Operator Name SAGA PETROLEUM LLC		Elevation 3632'

Surface Location

UL or lot No.	Section	Township	Range	Lot Idn	Feet from the	North/South line	Feet from the	East/West line	County
1	32	18-S	38-E		2223	SOUTH	860	EAST	LEA

Bottom Hole Location If Different From Surface

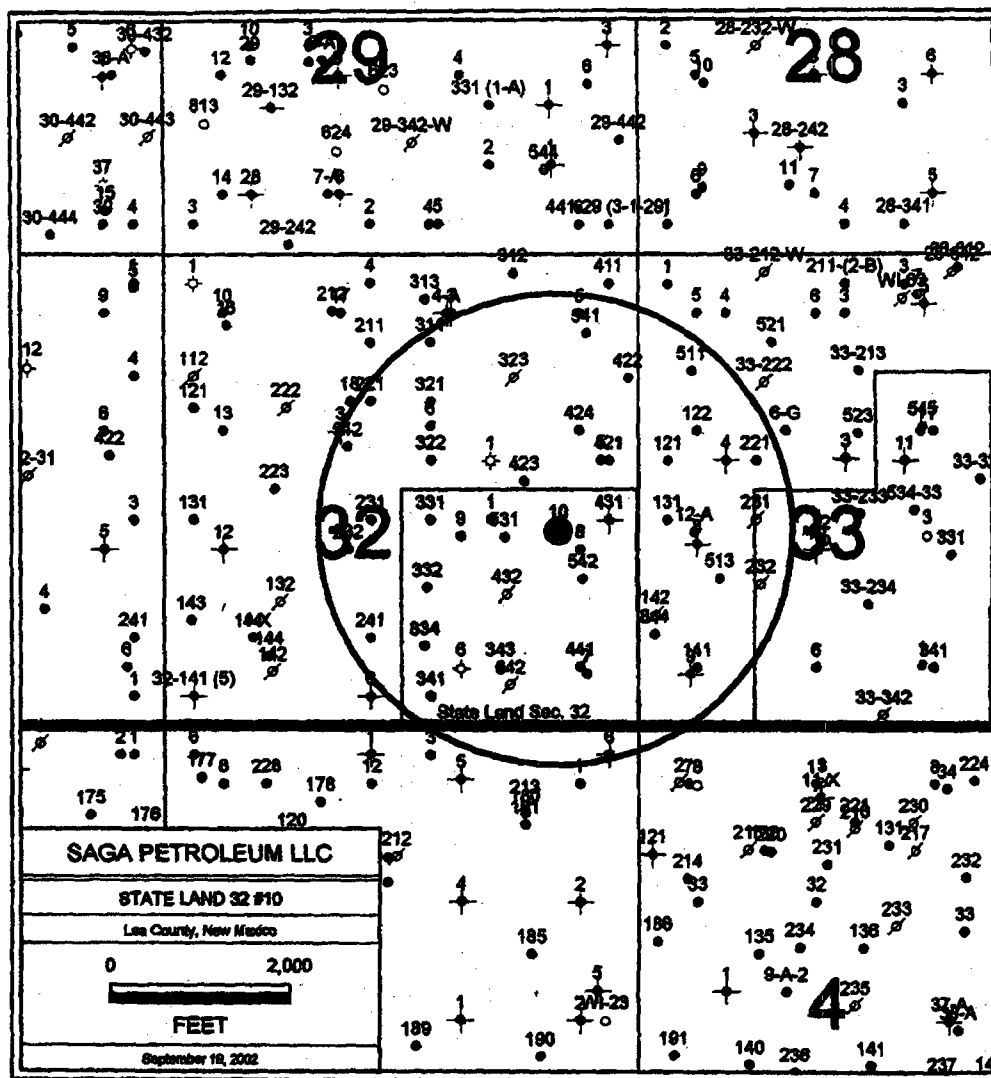
UL or lot No.	Section	Township	Range	Lot Idn	Feet from the	North/South line	Feet from the	East/West line	County
Dedicated Acres 80		Joint or Infill		Consolidation Code		Order No.			

NO ALLOWABLE WILL BE ASSIGNED TO THIS COMPLETION UNTIL ALL INTERESTS HAVE BEEN CONSOLIDATED
OR A NON-STANDARD UNIT HAS BEEN APPROVED BY THE DIVISION

	OPERATOR CERTIFICATION I hereby certify the the information contained herein is true and complete to the best of my knowledge and belief. Signature Bonnie Husband Printed Name Production Analyst Title July 12, 2002 Date	
	SURVEYOR CERTIFICATION I hereby certify that the well location shown on this plat was plotted from field notes of actual surveys made by me or under my supervision, and that the same is true and correct to the best of my belief. MAY 22, 2002 Date Surveyed Signature Professional Surveyor Certified No. RONALD J. EDSON 5123/02 OART EDSON 18841 REGISTERED PROFESSIONAL	

API	Company	well name	well#	TD	prod fm.	FIELD	status	perfs
sec. 32, T18S, R38E								
	ALTURA ENERGY	N HOBBS UNIT	432		GBSA	HOBBS	INJ	
3002507515	ALTURA ENERGY	N HOBBS UNIT	311	4160	GBSA	HOBBS		
3002507518	ALTURA ENERGY	N HOBBS UNIT	322	4248	GBSA	HOBBS		4064-4249
3002507520	SHELL OIL (GULF)	N HOBBS UNIT	221	4290	GBSA	HOBBS		
3002507521	ALTURA ENERGY	N HOBBS UNIT	231	4230	GBSA	HOBBS		
3002507529	GULF OIL	WD GRIMES A	11	3169	7Rivers	BOWERS	P&A	
3002507533	ALTURA ENERGY	N HOBBS UNIT	241	4270	GBSA	HOBBS		4068-4082
3002507535	OHIO	STATE NORTHRUP	1	3661				
3002507536	ALTURA ENERGY	N HOBBS UNIT	441	4241	GBSA	HOBBS		
3002507537	ALTURA ENERGY	N HOBBS UNIT	431	4245	GBSA	HOBBS		
3002507538	ALTURA ENERGY	N HOBBS UNIT	331	4261	GBSA	HOBBS		4040-4240
3002507539	ALTURA ENERGY	N HOBBS UNIT	341	4236	GBSA	HOBBS		
3002507540	SAGA	STATE LAND 32	6	3203	7Rivers	BOWERS		
3002507541	SAGA	STATE LAND 32	7	3216	7Rivers	BOWERS		
3002507542	SAGA	STATE LAND 32	8	3202	7Rivers	BOWERS		
3002508409	ALTURA ENERGY	STATE A	5	3184				
3002512504	ALTURA ENERGY	STATE A	1	4175	QUEEN	BYERS	GAS	
3002512506	ALTURA ENERGY	N HOBBS UNIT	321	4290	GBSA	HOBBS	INJ	4084-4252
3002512507	ALTURA ENERGY	N HOBBS UNIT	421	4211	GBSA	HOBBS	Active	4046-4214
3002522944	Altura Energy	Shell State A	6	6021	Blinbry	Hobbs	Active	5805-5929
3002523035	Altura Energy	N HOBBS UNIT	232	6020	GBSA	Hobbs	Active	4082-4237
3002523116	Apache Corp.	State A	5	8044	Blinbry	Hobbs	Active	6674-6936
3002523130	Altura Energy	N HOBBS UNIT	424	7020	GBSA	Hobbs		4128-4244
3002523309	Saga	State Land Sec. 32	9	7002	blinbry	Hobbs	Active	5813-5968
3002526973	ALTURA ENERGY	N HOBBS UNIT	323	4400	GBSA	HOBBS	INJ	
3002528266	ALTURA ENERGY	N HOBBS UNIT	342	4431	GBSA	HOBBS	INJ	4091-4283
3002529074	ALTURA ENERGY	N HOBBS UNIT	422	4370	GBSA	HOBBS	Active	
3002529173	ALTURA ENERGY	N HOBBS UNIT	332	4370	GBSA	HOBBS	Active	4069-4070
3002529198	ALTURA ENERGY	N HOBBS UNIT	423	4382	GBSA	HOBBS	INJ	
3002529906	ALTURA ENERGY	N HOBBS UNIT	343	4370	GBSA	HOBBS	Active	4141-4208
3002534374	ALTURA ENERGY	N HOBBS UNIT	531	4400	GBSA	HOBBS	Active	4052-4233
3002534375	ALTURA ENERGY	N HOBBS UNIT	542	4600	GBSA	HOBBS	Active	
3002534907	ALTURA ENERGY	N HOBBS UNIT	512	4600	GBSA	HOBBS	Active	
3002534964	ALTURA ENERGY	N HOBBS UNIT	541	4500	GBSA	HOBBS		
3002535452	ALTURA ENERGY	N HOBBS UNIT	834	4500	GBSA	HOBBS	Active	

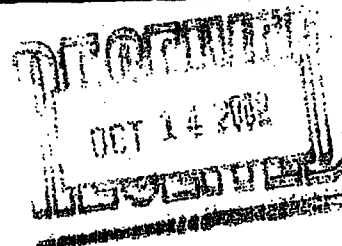
sec. 33, T18S, R38E								
3002507543	ALTURA ENERGY	N HOBBS UNIT	141	4183	GBSA	HOBBS	Inj?	
3002507544	ALTURA ENERGY	N HOBBS UNIT	131	4240	GBSA	HOBBS	Inj?	
3002507545	ALTURA ENERGY	N HOBBS UNIT	231	4230	GBSA	HOBBS	Inj	
3002507549	CONTINENTAL	STATE A-33	8	3204		HOBBS	P&A?	
3002507550	CONTINENTAL	STATE A-33	9	3208		HOBBS	P&A?	
3002507559	ALTURA ENERGY	N HOBBS UNIT	121	4179	GBSA	HOBBS	Inj?	
3002507560	ALTURA ENERGY	N HOBBS UNIT	221	4242	GBSA	HOBBS	Inj?	
3002507563	STANOLIND	STATE G	4	3204		HOBBS	P&A?	
3002523195	Brother Prod. Co.	State A 33	12	7022	Drinkard	Hobbs	Active	6692-6694
3002523263	ALTURA ENERGY	N HOBBS UNIT	122	7049	GBSA	HOBBS	Active	
3002526834	ALTURA ENERGY	N HOBBS UNIT	232	4453	GBSA	HOBBS	Inj	
3002528411	ALTURA ENERGY	N HOBBS UNIT	142	4370	GBSA	HOBBS	Inj	
3002534906	ALTURA ENERGY	N HOBBS UNIT	511	4600	GBSA	HOBBS	Active	
3002534980	ALTURA ENERGY	N HOBBS UNIT	513	4500	GBSA	HOBBS	Active	
3002535534	ALTURA ENERGY	N HOBBS UNIT	844	3634	GBSA	HOBBS	Active	
sec. 5, T19S, R38E								
3002507616	SUN	H D MCKINLEY	6	3210		BOWERS		





PETROLEUM

October 2, 2002



Offset Operators

Re: State Land Section 32 #10 well
2223' FSL & 860' FEL
Sec. 32 (I), T18S, R38E
Lea County, New Mexico

Gentlemen:

Saga's proposes to drill the referenced well at a non-standard location in the near future. If you have no objections to this NSL, please sign in the space provided below and return to Saga in the enclosed envelope. Should you have any questions, please contact Joe Clement, NM area engineer, at the phone number listed below.

Very truly yours,

SAGA PETROLEUM LLC

Bonnie Husband

Bonnie Husband
Production Analyst

Enclosures

We do not have any objections to Saga's proposed State Land Sec. 32 #10 well located at a NSL.

Company Name:

Brothers Production Co. Inc

Signature

John A. Mervant

Date

10-11-02

415 W. Wall, Ste 1900
Midland, TX 79701

*CC-Hobbs OCO
10-14-02*

Office: (915) 684-4293
Fax (915) 684-0829



PETROLEUM

October 2, 2002

Offset Operators

Re: State Land Section 32 #10 well
2223' FSL & 860' FEL
Sec. 32 (I), T18S, R38E
Lea County, New Mexico

Gentlemen:

Saga's proposes to drill the referenced well at a non-standard location in the near future. If you have no objections to this NSL, please sign in the space provided below and return to Saga in the enclosed envelope. Should you have any questions, please contact Joe Clement, NM area engineer, at the phone number listed below.

Very truly yours,

SAGA PETROLEUM LLC

Bonnie Husband
Production Analyst

Enclosures

ok 10/2/02
ok 10/2/02
ok 10/2/02
We do not have any objections to Saga's proposed State Land Sec. 32 #10 well located at a NSL.

Company Name:

Apache Corporation

Signature

John A. Sarin
Land Mgr. - Central Region

Date

10/14/02

415 W. Wall, Ste 1900
Midland, TX 79701

Office: (915) 684-4293
Fax: (915) 684-0829

10-1801
CC
OCD
Hob