

NEW MEXICO OIL CONSERVATION DIVISION  
 - Engineering Bureau -  
 1220 South St. Francis Drive, Santa Fe, NM 87505



**ADMINISTRATIVE APPLICATION CHECKLIST**

THIS CHECKLIST IS MANDATORY FOR ALL ADMINISTRATIVE APPLICATIONS FOR EXCEPTIONS TO DIVISION RULES AND REGULATIONS WHICH REQUIRE PROCESSING AT THE DIVISION LEVEL IN SANTA FE

**Application Acronyms:**

[NSL-Non-Standard Location] [NSP-Non-Standard Proration Unit] [SD-Simultaneous Dedication]  
 [DHC-Downhole Commingling] [CTB-Lease Commingling] [PLC-Pool/Lease Commingling]  
 [PC-Pool Commingling] [OLS - Off-Lease Storage] [OLM-Off-Lease Measurement]  
 [WFX-Waterflood Expansion] [PMX-Pressure Maintenance Expansion]  
 [SWD-Salt Water Disposal] [IPI-Injection Pressure Increase]  
 [EOR-Qualified Enhanced Oil Recovery Certification] [PPR-Positive Production Response]

[1] **TYPE OF APPLICATION - Check Those Which Apply for [A]**

[A] Location - Spacing Unit - Simultaneous Dedication  
☒ NSL ☐ NSP ☐ SD

Check One Only for [B] or [C]

[B] Commingling - Storage - Measurement  
☐ DHC ☐ CTB ☐ PLC ☐ PC ☐ OLS ☐ OLM

[C] Injection - Disposal - Pressure Increase - Enhanced Oil Recovery  
☐ WFX ☐ PMX ☐ SWD ☐ IPI ☐ EOR ☐ PPR

[D] Other: Specify \_\_\_\_\_

APR - 7 2003

[2] **NOTIFICATION REQUIRED TO: - Check Those Which Apply, or ☐ Does Not Apply**

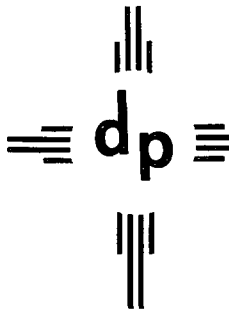
- [A] ☐ Working, Royalty or Overriding Royalty Interest Owners  
 [B] ☒ Offset Operators, Leaseholders or Surface Owner  
 [C] ☐ Application is One Which Requires Published Legal Notice  
 [D] ☐ Notification and/or Concurrent Approval by BLM or SLO  
U.S. Bureau of Land Management - Commissioner of Public Lands, State Land Office  
 [E] ☒ For all of the above, Proof of Notification or Publication is Attached, and/or,  
 [F] ☐ Waivers are Attached

[3] **SUBMIT ACCURATE AND COMPLETE INFORMATION REQUIRED TO PROCESS THE TYPE OF APPLICATION INDICATED ABOVE.**

[4] **CERTIFICATION:** I hereby certify that the information submitted with this application for administrative approval is **accurate** and **complete** to the best of my knowledge. I also understand that **no action** will be taken on this application until the required information and notifications are submitted to the Division.

Note: Statement must be completed by an individual with managerial and/or supervisory capacity.

Kurt Fagrelus  
 Print or Type Name  
 Signature Kurt Fagrelus  
 Title Geologist  
 Date 4/2/2003  
 e-mail Address kfagrelus@duganproduction.com



# dugan production corp.

---

April 4, 2003

**Certified – 7001 1940 0003 1548 2526**

Mr. Michael E. Stogner  
New Mexico Oil Conservation Division  
1220 South St. Francis Drive  
Santa Fe, New Mexico 87505

Re: Application for Administrative Approval of  
Unorthodox Location for Dugan Production Corp.'s Federal I Com #9  
Unit C, Section 12, T29N, R14W  
1170' FNL & 2440' FWL (NW/4 - 160)

Dear Mr. Stogner:

Dugan Production hereby requests approval for an unorthodox location for the referenced well. Attached for your reference are the following exhibits:

1. Well location and acreage dedication plat (NMOCD Form C-102)
2. Topographic map
3. Offsetting operator map

The unorthodox location is necessary due to topographic conditions.

The subject well is located inside the Farmington city limits. Existing, commercial and industrial developments occupy all favorable topographic and orthodox areas within the proration unit.

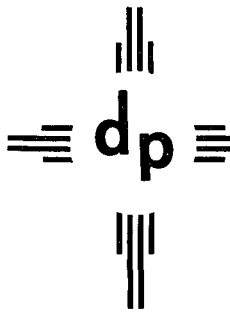
By certified mail, a copy of this application and request for administrative approval has been sent to all Fruitland Sand and Pictured Cliffs offsetting operators, the Bureau of Land Management and the City of Farmington.

Please contact me if you have any questions or need additional information.

Sincerely,

Kurt Fagrelus  
Geologist

Attachments



dugan production corp.

---

Cc:

Bureau of Land Management – 1235 La Plata Hwy., Farmington, NM 87401

(Certified Return Receipt Requested – 7001 1940 0003 1548 2618)

NMOCD - 1000 Rio Brazos Road, Aztec, NM 87410

(Certified Return Receipt Requested – 7001 1940 0003 1548 2625)

City of Farmington – 800 Municipal Drive, Farmington, NM 87401

(Certified Return Receipt Requested – 7001 1940 0003 1548 2564)

Richardson Operating Company – 501 Airport Drive, Suite 119, Farmington, NM 87401

(Certified Return Receipt Requested – 7001 1940 0003 1548 2540)

District I  
PO Box 1980, Hobbs, NM 88241-1980

District II  
PO Drawer 00, Artesia, NM 88211-0719

District III  
1000 Rio Brazos Rd., Aztec, NM 87410

District IV  
PO Box 2088, Santa Fe, NM 87504-2088

State of New Mexico  
Energy, Minerals & Natural Resources Department

OIL CONSERVATION DIVISION  
PO Box 2088  
Santa Fe, NM 87504-2088

Form C-102  
Revised February 21, 1994  
Instructions on back  
Submit to Appropriate District Office  
State Lease - 4 Copies  
Fee Lease - 3 Copies

☐ AMENDED REPORT

### WELL LOCATION AND ACREAGE DEDICATION PLAT

*API Number		*Pool Code 78160	*Pool Name HARPER HILL FRUITLAND SAND PICTURED CLIFFS
*Property Code	*Property Name FEDERAL I <i>Com</i>		*Well Number 9
*OGRID No. 006515	*Operator Name DUGAN PRODUCTION CORPORATION		*Elevation 5468'

#### <sup>10</sup> Surface Location

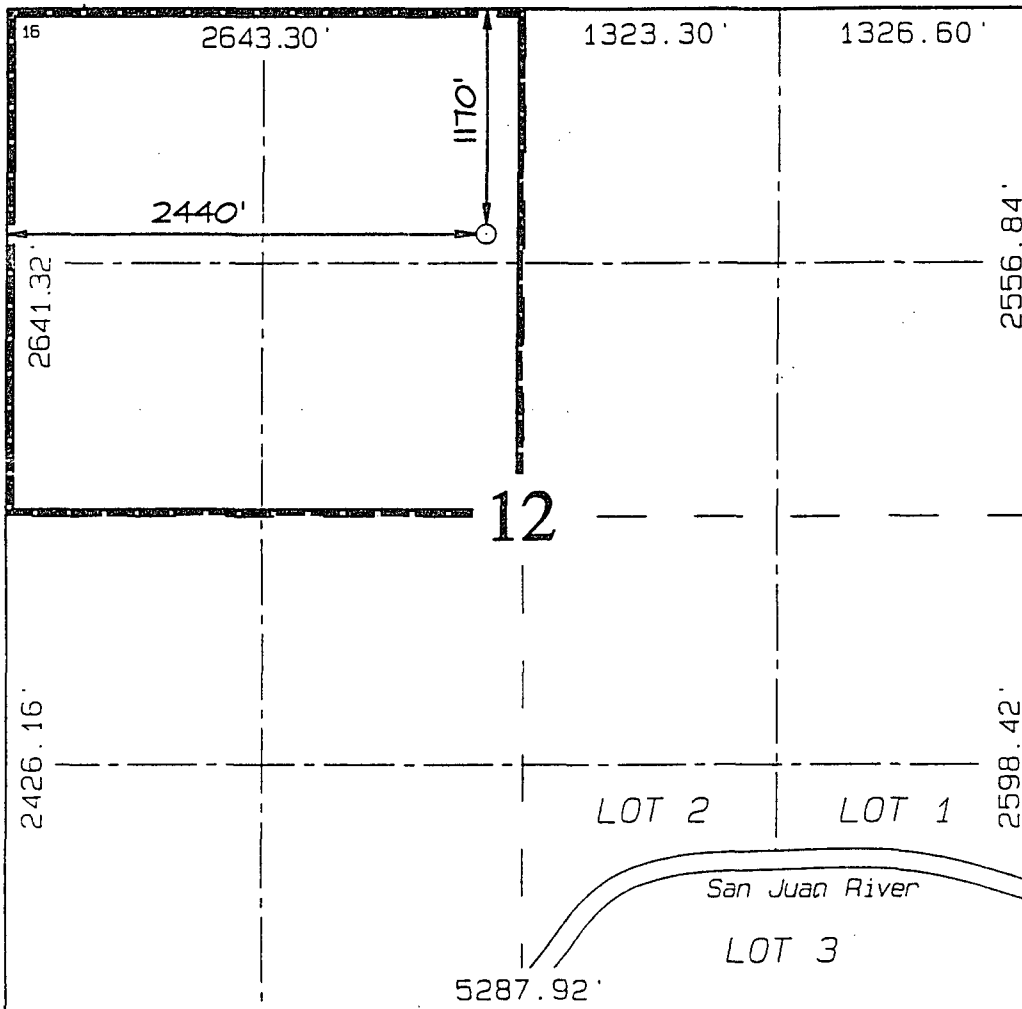
UL or lot no.	Section	Township	Range	Lot Idn	Feet from the	North/South line	Feet from the	East/West line	County
C	12	29N	14W		1170	NORTH	2440	WEST	SAN JUAN

#### <sup>11</sup> Bottom Hole Location If Different From Surface

UL or lot no.	Section	Township	Range	Lot Idn	Feet from the	North/South line	Feet from the	East/West line	County

<sup>12</sup> Dedicated Acres 160.0 ACRES - (NW/4)	<sup>13</sup> Joint or Infill	<sup>14</sup> Consolidation Code	<sup>15</sup> Order No.
---	-------------------------------	----------------------------------	-------------------------

NO ALLOWABLE WILL BE ASSIGNED TO THIS COMPLETION UNTIL ALL INTERESTS HAVE BEEN CONSOLIDATED  
OR A NON-STANDARD UNIT HAS BEEN APPROVED BY THE DIVISION



#### <sup>17</sup> OPERATOR CERTIFICATION

I hereby certify that the information contained herein is true and complete to the best of my knowledge and belief

*Kurt Fagrelus*  
Signature

Kurt Fagrelus  
Printed Name  
Geologist

April 2, 2003  
Title

Date

#### <sup>18</sup> SURVEYOR CERTIFICATION

I hereby certify that the well location shown on this plat was plotted from field notes of actual surveys made by me or under my supervision, and that the same is true and correct to the best of my belief.

Date of Survey: JUNE 7, 2002

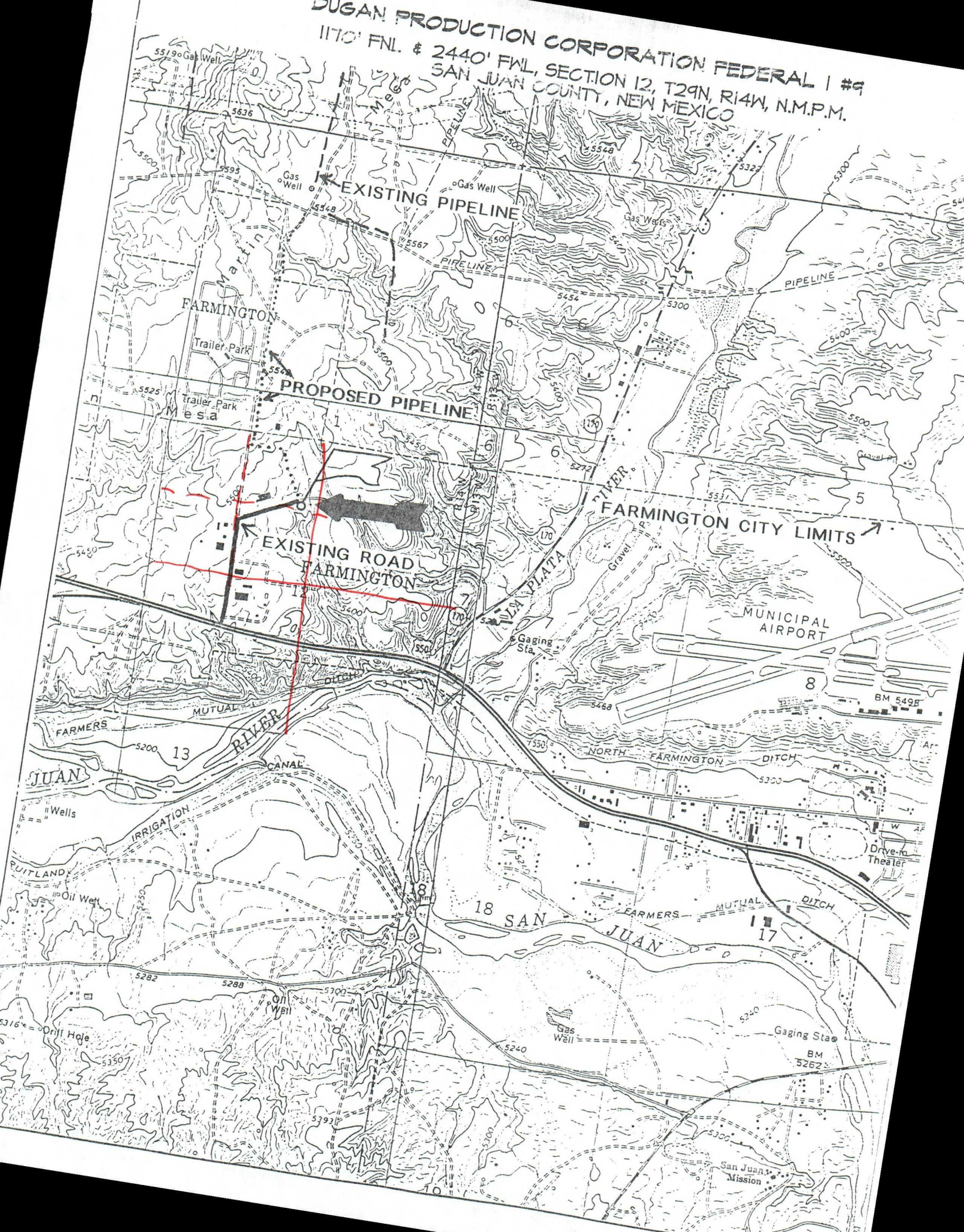
Signature and Seal of Professional Surveyor



*JASON C. EDWARDS*  
Certificate Number 15269

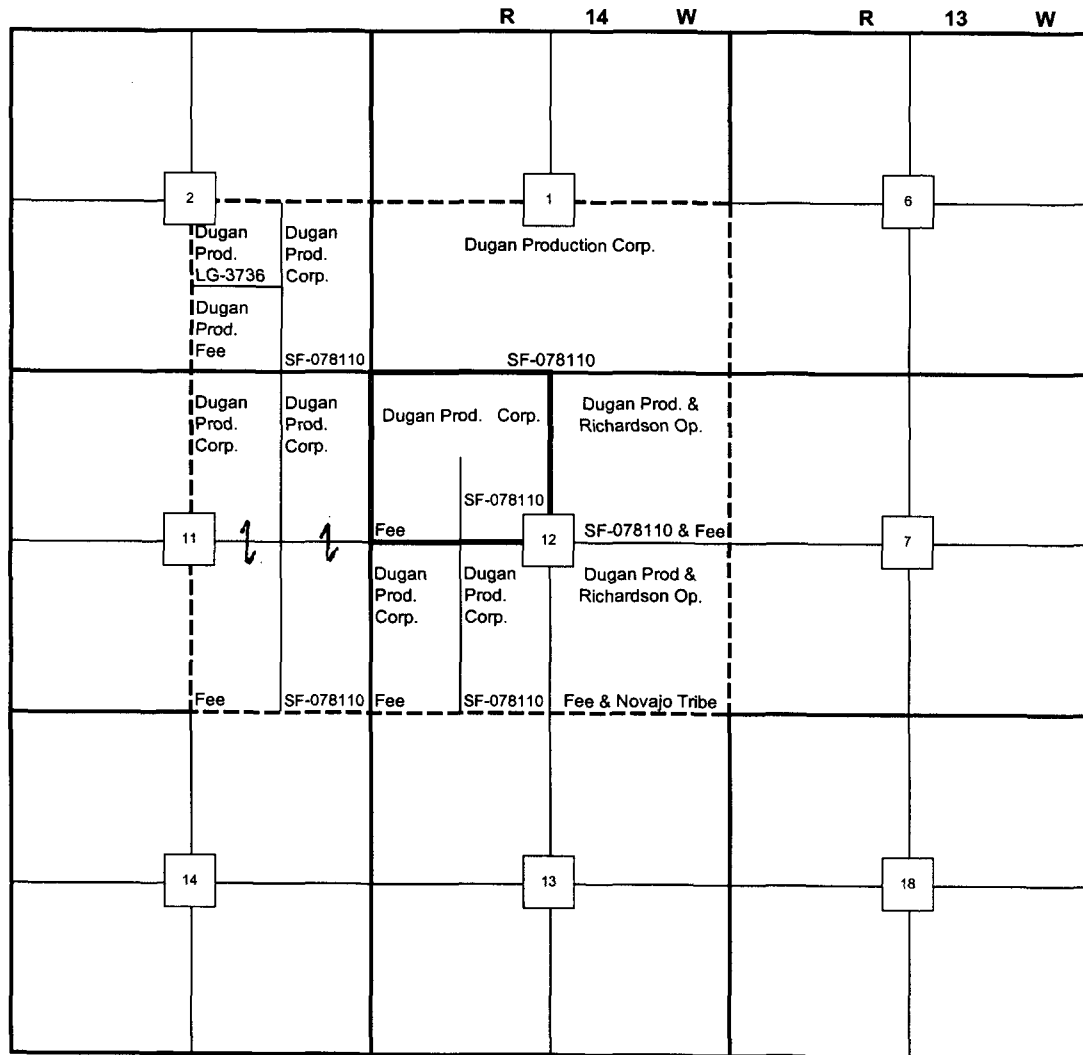


DUGAN PRODUCTION CORPORATION FEDERAL I #9  
1170' FNL. & 2440' FWL, SECTION 12, T29N, R14W, N.M.P.M.  
SAN JUAN COUNTY, NEW MEXICO





DUGAN PRODUCTION CORP.  
 Federal I Com # 9 Well  
 Application for Unorthodox Location  
 Fruitland Sand/Pictured Cliffs Pool  
 San Juan County, New Mexico



Offsetting Operators and Mineral Owners Map  
 All Offsetting Operators are Working Interest owners

 Spacing Unit

 Offsetting notification area

[Send To Printer](#)   [Back To TerraServer](#)   [Change to 11x17 Print Size](#)   [Show Grid Lines](#)   [Change to Landscape](#)

**USGS 5 km W of Farmington, New Mexico, United States 13 Oct 1997**



0 100 200M

0 100 200yd

Image courtesy of the U.S. Geological Survey  
© 2003 Microsoft Corporation. All rights reserved. [Terms of Use](#)



[Send To Printer](#)

[Back To TerraServer](#)

[Change to 11x17 Print Size](#)

[Show Grid Lines](#)

[Change to Landscape](#)

**USGS 5 km W of Farmington, New Mexico, United States 13 Oct 1997**



0 100M

0 100yd

Image courtesy of the U.S. Geological Survey

© 2003 Microsoft Corporation. All rights reserved. [Terms of Use](#)



[Send To Printer](#)

[Back To TerraServer](#)

[Change to 11x17 Print Size](#)

[Show Grid Lines](#)

[Change to Landscape](#)

**USGS 5 km W of Farmington, New Mexico, United States 13 Oct 1997**



0 100M

0 100yd

Image courtesy of the U.S. Geological Survey  
© 2003 Microsoft Corporation. All rights reserved. **Terms of Use**