

ABOVE THIS LINE FOR DIVISION USE ONLY

NEW MEXICO OIL CONSERVATION DIVISION
- Engineering Bureau -
 1220 South St. Francis Drive, Santa Fe, NM 87505



241

ADMINISTRATIVE APPLICATION CHECKLIST

THIS CHECKLIST IS MANDATORY FOR ALL ADMINISTRATIVE APPLICATIONS FOR EXCEPTIONS TO DIVISION RULES AND REGULATIONS WHICH REQUIRE PROCESSING AT THE DIVISION LEVEL IN SANTA FE

Application Acronyms:

- [NSL-Non-Standard Location] [NSP-Non-Standard Proration Unit] [SD-Simultaneous Dedication]
 [DHC-Downhole Commingling] [CTB-Lease Commingling] [PLC-Pool/Lease Commingling]
 [PC-Pool Commingling] [OLS - Off-Lease Storage] [OLM-Off-Lease Measurement]
 [WFX-Waterflood Expansion] [PMX-Pressure Maintenance Expansion]
 [SWD-Salt Water Disposal] [IPI-Injection Pressure Increase]
 [EOR-Qualified Enhanced Oil Recovery Certification] [PPR-Positive Production Response]

[1] TYPE OF APPLICATION - Check Those Which Apply for [A]

- [A] Location - Spacing Unit - Simultaneous Dedication
☐ NSL ☐ NSP ☐ SD

Check One Only for [B] or [C]

- [B] Commingling - Storage - Measurement
☐ DHC ☐ CTB ☐ PLC ☐ PC ☐ OLS ☐ OLM

- [C] Injection - Disposal - Pressure Increase - Enhanced Oil Recovery
☐ WFX ☐ PMX ☐ SWD ☒ IPI ☐ EOR ☐ PPR

- [D] Other: Specify _____

[2] NOTIFICATION REQUIRED TO: - Check Those Which Apply, or ☐ Does Not Apply

- [A] ☐ Working, Royalty or Overriding Royalty Interest Owners
 [B] ☐ Offset Operators, Leaseholders or Surface Owner
 [C] ☐ Application is One Which Requires Published Legal Notice
 [D] ☐ Notification and/or Concurrent Approval by BLM or SLO
U.S. Bureau of Land Management - Commissioner of Public Lands, State Land Office
 [E] ☐ For all of the above, Proof of Notification or Publication is Attached, and/or,
 [F] ☐ Waivers are Attached

[3] SUBMIT ACCURATE AND COMPLETE INFORMATION REQUIRED TO PROCESS THE TYPE OF APPLICATION INDICATED ABOVE.

[4] CERTIFICATION: I hereby certify that the information submitted with this application for administrative approval is **accurate** and **complete** to the best of my knowledge. I also understand that **no action** will be taken on this application until the required information and notifications are submitted to the Division.

Note: Statement must be completed by an individual with managerial and/or supervisory capacity.

Print or Type Name	Signature	Title	Date
e-mail Address			

ChevronTexaco

September 21, 2004

State of New Mexico
Energy and Minerals Dept.
Oil Conservation Division
1220 South St. Francis Drive
Santa Fe, New Mexico 87505

RECEIVED
SEP 23 2004
OIL CONSERVATION
DIVISION

Attention: Mr. David Catanach, Engineering Bureau

**RE: Injection Pressure Increase
West Vacuum Unit #57, #58, #68**

Dear Mr. Catanach,

ChevronTexaco is requesting permission to increase the surface injection pressure on three water injection wells on the West Vacuum Unit listed below. This request is based upon step rate tests conducted on September 17th and 20th of 2004 by Precision Pressure Data INC. The results of the step rates are attached to this letter. The well locations are shown on attached surface maps.

<i>West Vacuum Unit #58</i>	<i>West Vacuum Unit #68</i>	<i>West Vacuum Unit #57</i>
<i>1330 FNL 1330 FEL</i>	<i>1045 FNL 1118 FEL</i>	<i>75 FSL 1305 FEL</i>
<i>Section 3, T-17S R-34E</i>	<i>Section 34, T-17S R-34E</i>	<i>Section 34, T-17S R-34E</i>
<i>API: 30-025-33588</i>	<i>API: 30-025-33768</i>	<i>API: 30-025-33599</i>

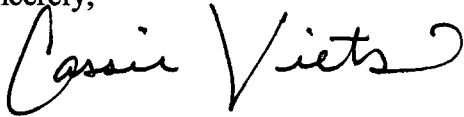
Each of these three wells was converted to injection in July of 1999, and on October 28th 1999 the New Mexico Oil Conservation Division granted approval to increase the surface injection pressure on WVU #57 to 1710 psi, WVU #58 to 1685 psi, and WVU #68 to 1300 psi. The NMOCD approval letter is attached for your information.

According to the results of the new step rate tests, the surface injection pressures would be as follows:

WVU #57 – 2300 psi
WVU #58 – 2400 psi
WVU #68 – 2240 psi

Please review the results of these tests to confirm the injection pressure increases.
Your prompt consideration and approval of this application will be greatly appreciated.
If additional information is required, please contact me at (432) 687-7248.

Sincerely,

A handwritten signature in black ink that reads "Cassie Viets". The signature is fluid and cursive, with the first name "Cassie" and last name "Viets" clearly legible.

Cassie Viets
Petroleum Engineer - ChevronTexaco
15 Smith Rd, Room #2230
Midland, TX 79705
Telephone: (432) 687-7248

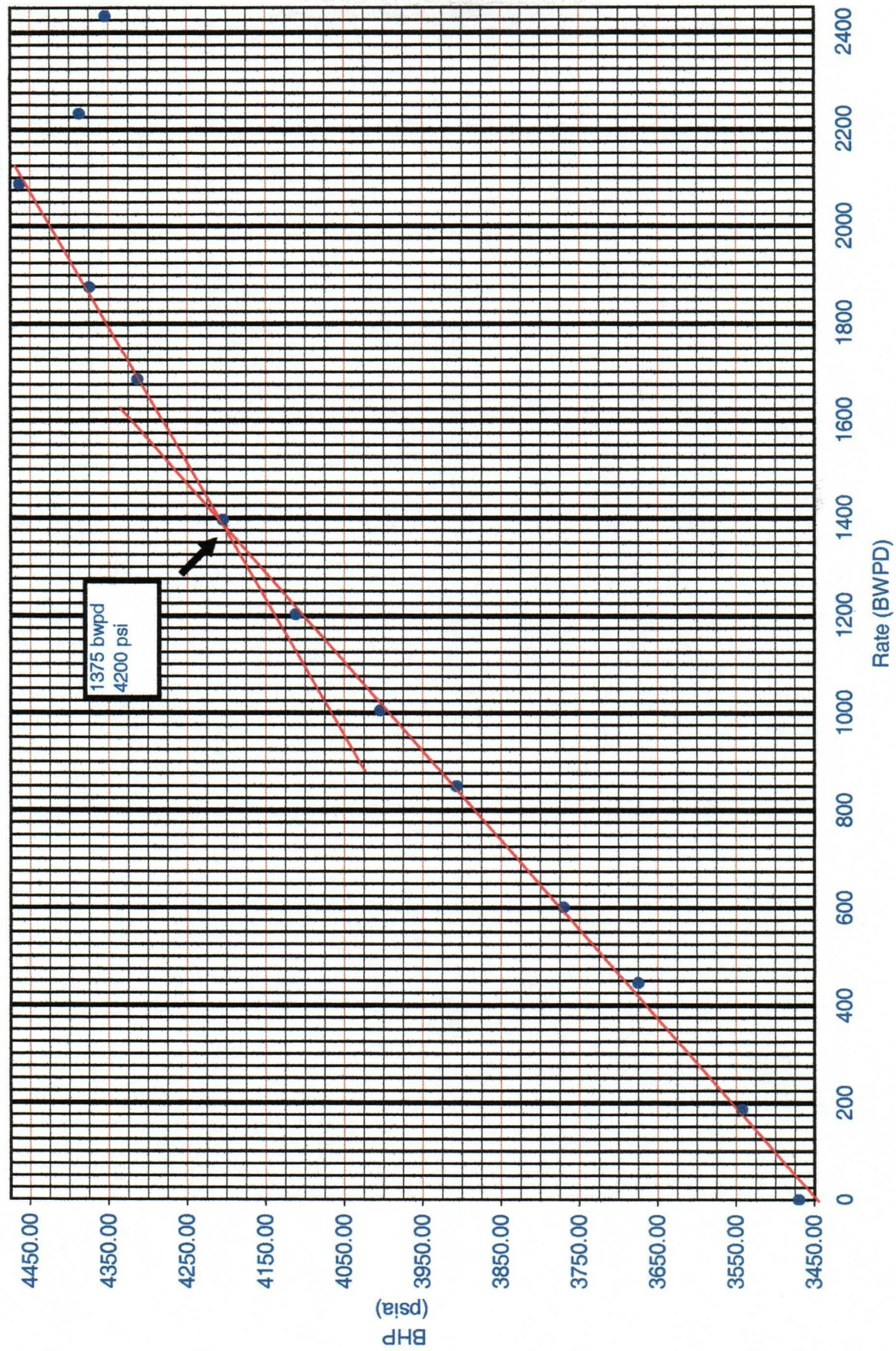
**CHEVRON TEXACO
WEST VACUUM UNIT #57 WIW
TEST DATE 9/20/2004**

Run Depth: 4420	Perforations: 4482-4676
Formation: San Andres/Graybu	Total Depth: 4757
Casing Depth: 4426	Pkr. Depth: 4426
Tested By : J. Chesshir	Instrument #: 75794

Parting Pressure @ 4199 BHP (PSIA) @ 1375 BWPD

Step Rate Test
Chevron Texaco
West Vacuum Unit #57 WIW
9/20/2004

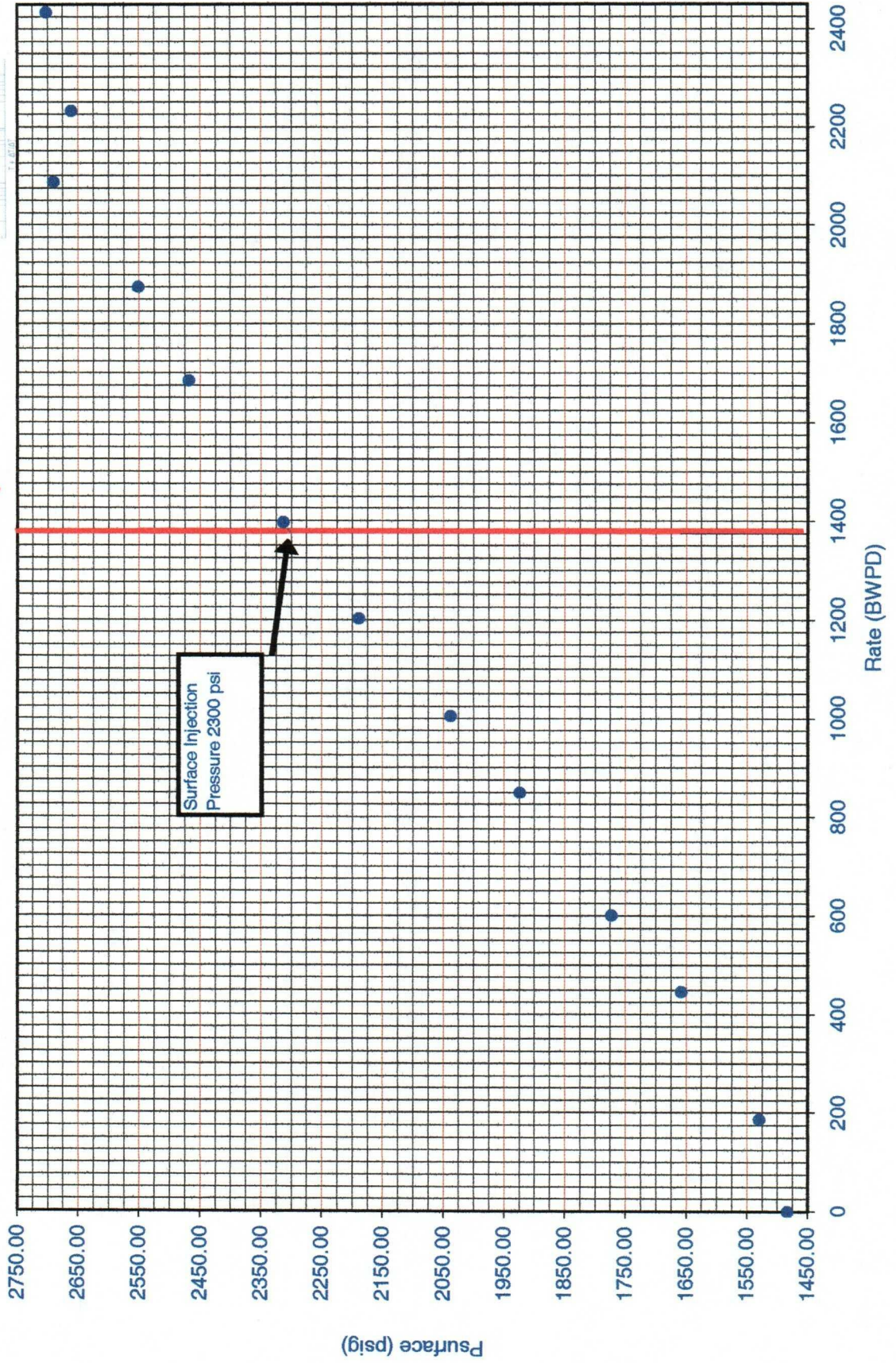
PRECISION
PRESSURE
DATA, INC.



Step Rate Test
Chevron Texaco
West Vacuum Unit #57 WIW
9/20/2004

PRECISION
PRESSURE
DATA, INC.

1375 bwpd



DISTRICT II
P. O. Drawer DD, Artesia, NM 88210

OIL CONSERVATION DIVISION

PO Box 2088
Santa Fe, NM 87504-2088

Submit to Appropriate District Office

DISTRICT III
1000 Rio Brazos Rd., Aztec, NM 87410DISTRICT IV
P. O. Box 2088, Santa Fe, NM 87504-2088State Lease-4 copies
Fee Lease-3 copies☐ AMENDED REPORT

WELL LOCATION AND ACREAGE DEDICATION PLAT

¹ API Number		² Pool Code		³ Pool Name Vacuum Grayburg San Andres					
⁴ Property Code 11126		⁵ Property Name West Vacuum Unit						⁶ Well Number 57	
⁷ GRID No. 22351		⁸ Operator Name TEXACO EXPLORATION & PRODUCTION, INC.						⁹ Elevation 4030'	
¹⁰ Surface Location									
UL or lot no. P	Section 34	Township 17-S	Range 34-E	Lot Idn	Feet from the 75'	North/South line South	Feet from the 1305'	East/West line East	County Lea
¹¹ Bottom Hole Location If Different From Surface									
UL or lot no.	Section	Township	Range	Lot Idn	Feet from the	North/South line	Feet from the	East/West line	County
¹² Dedicated Acres 40		¹³ Joint or Infill		¹⁴ Consolidation Code		¹⁵ Order No.			

NO ALLOWABLE WILL BE ASSIGNED TO THIS COMPLETION UNTIL ALL INTERESTS HAVE BEEN CONSOLIDATED
OR A NON-STANDARD UNIT HAS BEEN APPROVED BY THE DIVISION.

	¹⁷ OPERATOR CERTIFICATION I hereby certify that the information contained herein is true and complete to the best of my knowledge and belief.
	Signature <i>C. Wade Howard</i>
	Printed Name C. Wade Howard
	Position Engineer's Assistant
	Company Texaco Expl. & Prod. Inc.
	Date September 17, 1996
	¹⁸ SURVEYOR CERTIFICATION I hereby certify that the well location shown on this plat was plotted from field notes of actual surveys made by me or under my supervision, and that the same is true and correct to the best of my knowledge and belief.
	Date Surveyed September 10, 1996
	Signature & Seal of Professional Surveyor <i>John S. Piper</i>
	Certificate No. 7254 John S. Piper

○ = Staked Location ● = Producing Well ● = Injection Well ○ = Water Supply Well ● = Plugged & Abandon Well
 ● = Found Section Corner, 2 or 3" Iron Pipe & GLO B.C. ○ = Found 1/4 Section Corner, 1" Iron Pipe & GLO B.C.

**CHEVRON TEXACO
WEST VACUUM UNIT #68 WIW
TEST DATE 9/17/2004**

Run Depth: 4773

Formation: San Andres/Graybu

Tubing Depth: 4507

Pkr. Depth: 4507

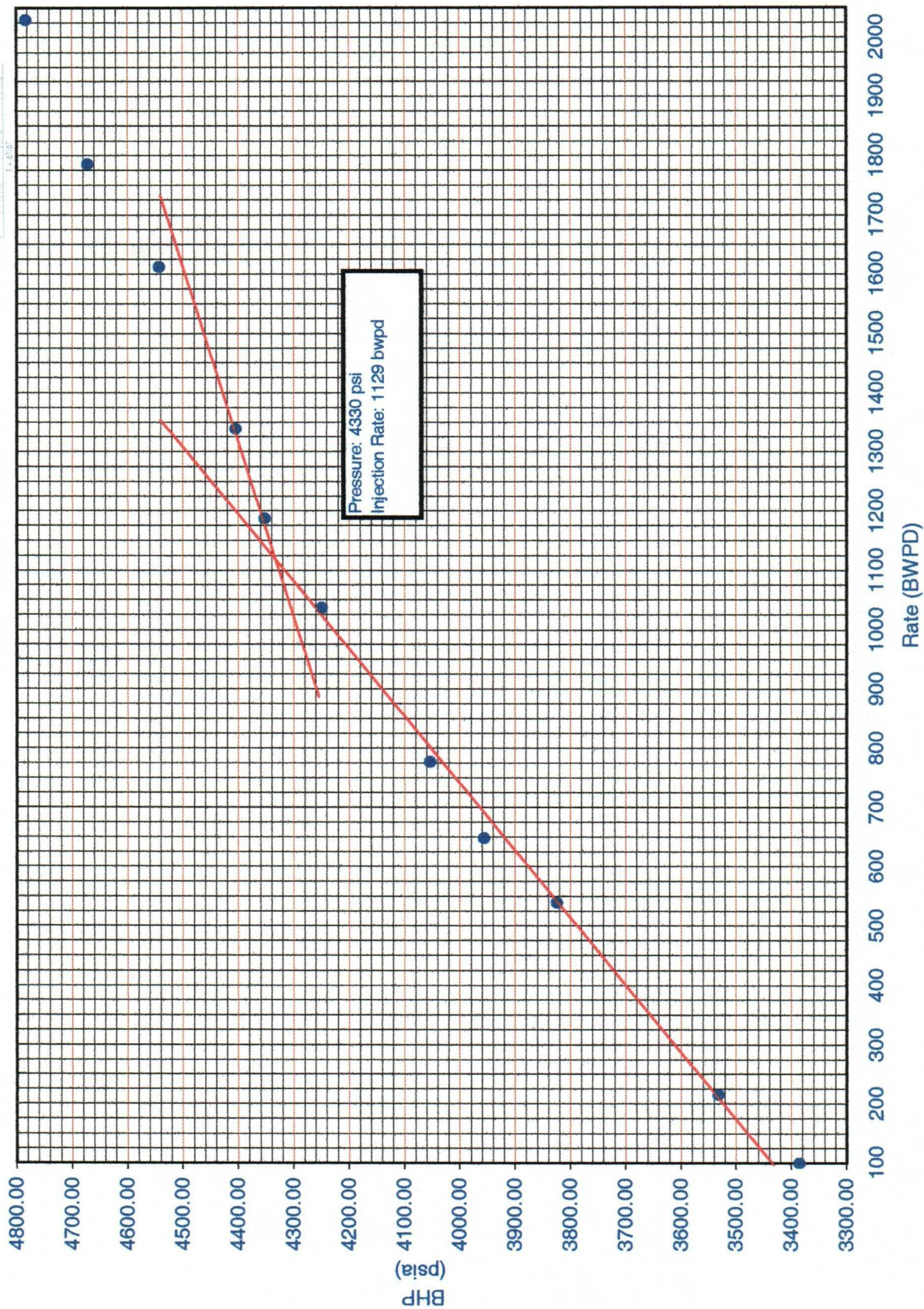
Tested By : J. Chesshir

Instrument #: 75794

Possible Parting Pressure @ 4330 BHP (PSIA) @ 1129 BWPD, However, Data Not Adequate for Definite Results

Step Rate Test
Chevron Texaco
West Vacuum Unit #68 WIW
9/17/2004

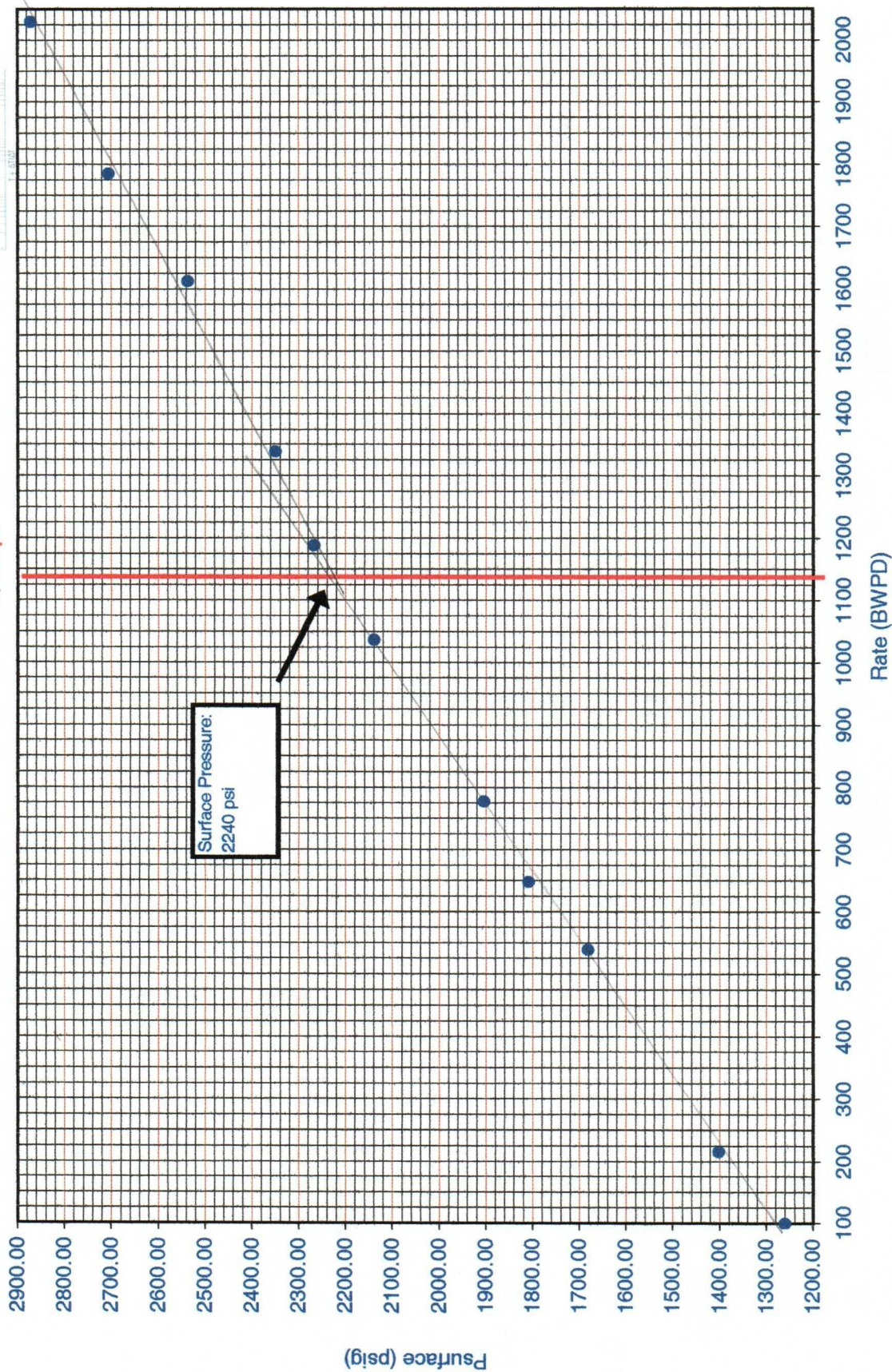
PRECISION
PRESSURE
DATA, INC.



Step Rate Test
Chevron Texaco
West Vacuum Unit #68 WIW
9/17/2004

PRECISION
PRESSURE
DATA, INC.

1125 bwpd



DISTRICT 1
P. O. Box 1980, Hobbs, NM 88240

State of New Mexico
Energy, Minerals and Natural Resources Department

Form C-102
Revised February 10, 1994

DISTRICT II
P. O. Drawer DD, Artesia, NM 88210

OIL CONSERVATION DIVISION

Instructions on back

DISTRICT III
1000 Rio Brazos Rd., Aztec, NM 87410

PO Box 2088
Santa Fe, NM 87504-2088

Submit to Appropriate District Office

DISTRICT IV
P. O. Box 2088, Santa Fe, NM 87504-2088

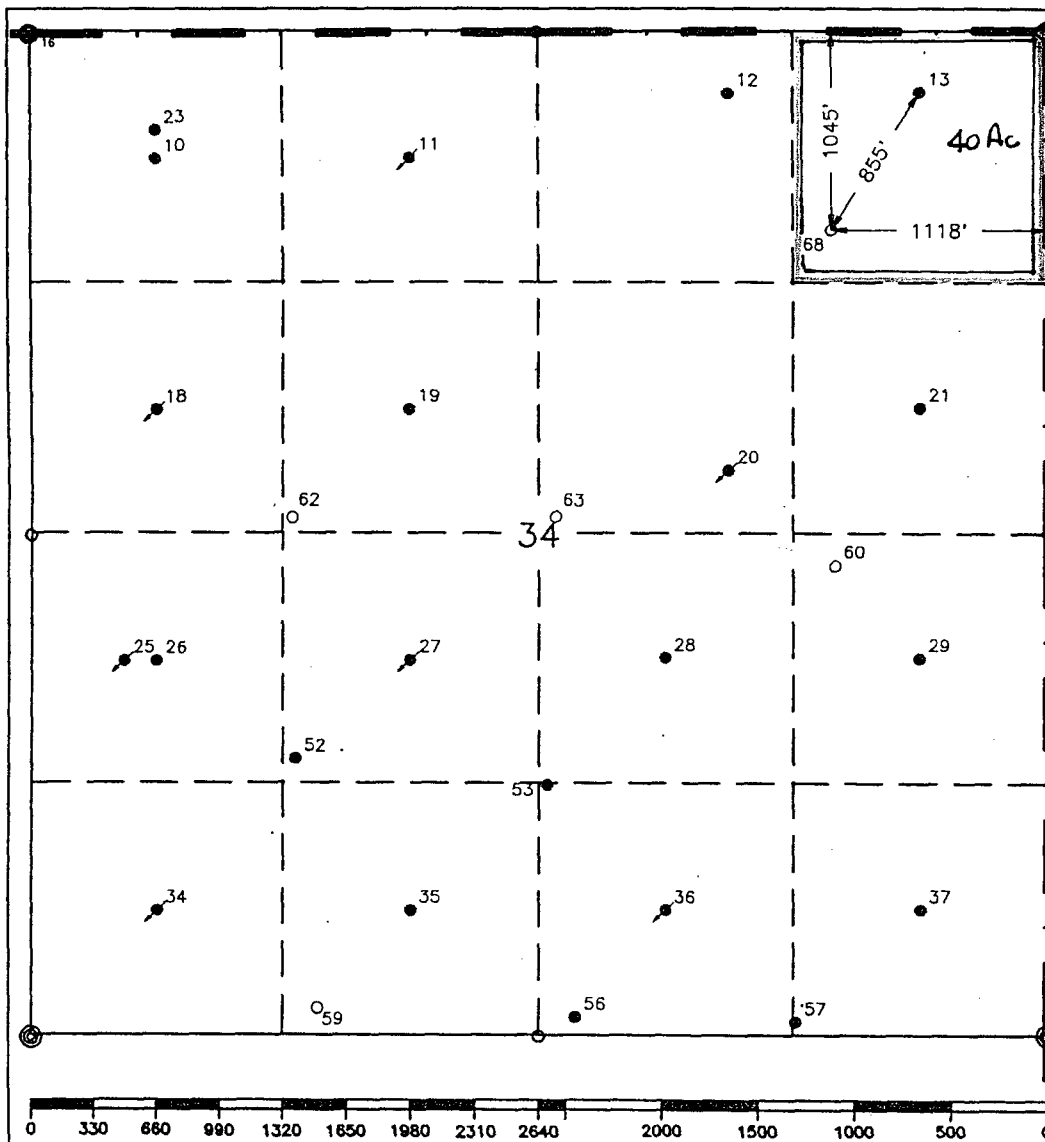
State Lease-4 copies
Fee Lease-3 copies

☐ AMENDED REPORT

WELL LOCATION AND ACREAGE DEDICATION PLAT

¹ API Number 3D-025-33768		² Pool Code 62180		³ Pool Name Vacuum Grayburg San Andres					
⁴ Property Code 11126		⁵ Property Name West Vacuum Unit				⁶ Well Number 68			
⁷ OGRID No. 22351		⁸ Operator Name TEXACO EXPLORATION & PRODUCTION, INC.				⁹ Elevation 4030'			
¹⁰ Surface Location									
UL or lot no. A	Section 34	Township 17-S	Range 34-E	Lot Idn	Feet from the 1045'	North/South line North	Feet from the 1118'	East/West line East	⁷ County Lea
¹¹ Bottom Hole Location If Different From Surface									
UL or lot no.	Section	Township	Range	Lot Idn	Feet from the	North/South line	Feet from the	East/West line	⁷ County
¹² Dedicated Acres 40	¹³ Joint or Infill		¹⁴ Consolidation Code		¹⁵ Order No.				

NO ALLOWABLE WILL BE ASSIGNED TO THIS COMPLETION UNTIL ALL INTERESTS HAVE BEEN CONSOLIDATED
OR A NON-STANDARD UNIT HAS BEEN APPROVED BY THE DIVISION.



17 OPERATOR CERTIFICATION

I hereby certify that the information contained herein is true and complete to the best of my knowledge and belief.

Signature

C. Wade Norwalk

Printed Name

C. Wade Howard

Position

Engineer's Assistant

Company

Texaco Expl. & Prod. Inc.

Date _____

January 2, 1997

18 SURVEYOR CERTIFICATION

I hereby certify that the well location shown on this plat was plotted from field notes of actual surveys made by me or under my supervision, and that the same is true and correct to the best of my knowledge and belief.

Date Surveyed

December 19, 1996

Signature & Seal of
Professional Surveyor

Certificate No.

7254 John S. Piper

Sheet

0 = Staked Location * = Producing Well = Injection Well = Water Supply Well = Plugged & Abandoned Well

Step Rate Test

CHEVRON TEXACO

WEST VACUUM UNIT #58 WIW

TEST DATE 9/17/2004

[illegible]

Run Depth: 4640

Perforations: 4562-4718

Formation: San Andres/Graybu

Total Depth: 4770

Tubing Depth: 4493

Pkr. Depth: 4493

Tested By : J. Chesshir

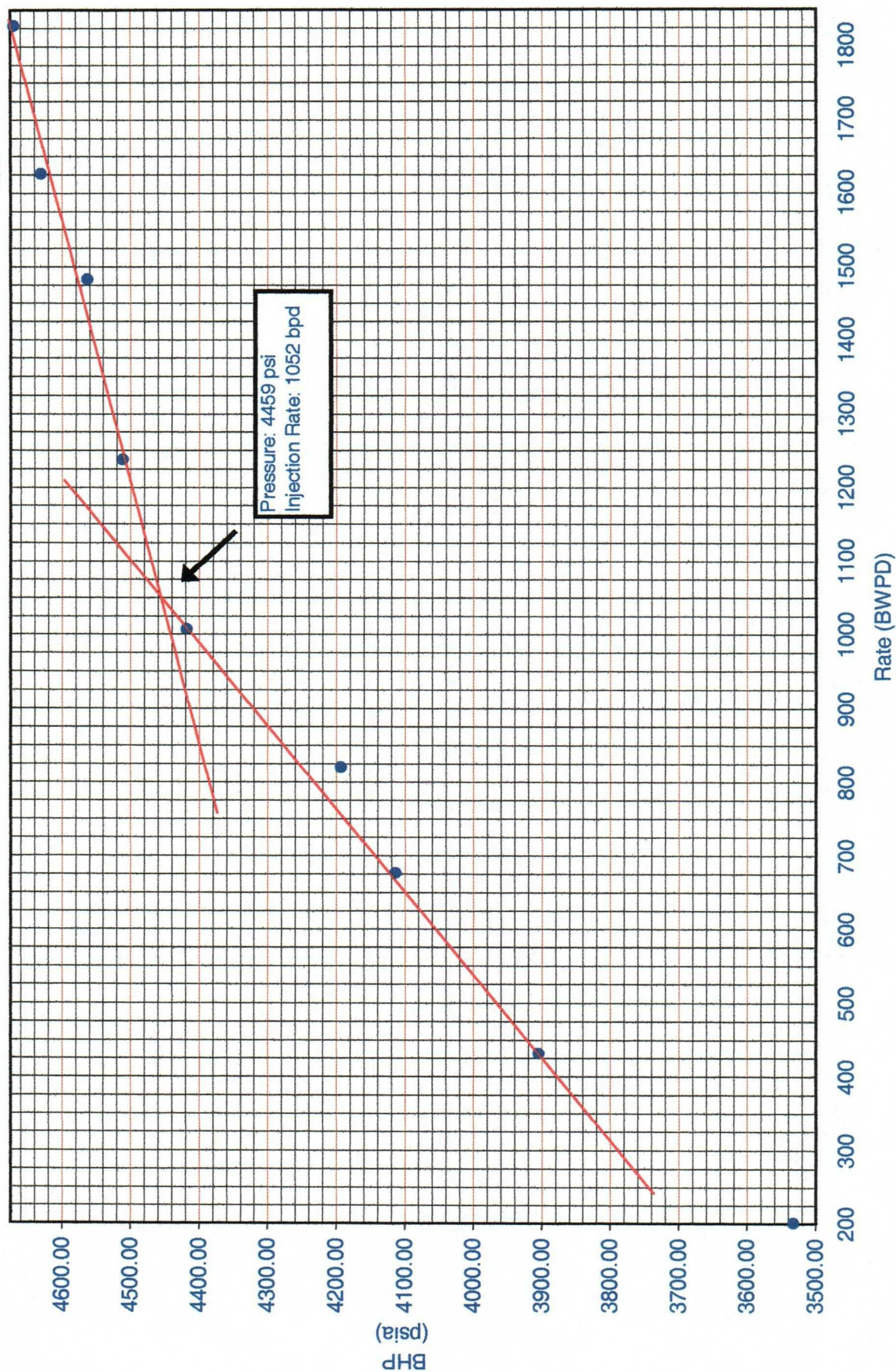
Instrument #: 75794

TEST RESULTS

Possible Parting Pressure @ 4459 BHP (PSIA) @ 1052 BWPD, However, Data Not Adequate for Definite Results

Step Rate Test
Chevron Texaco
West Vacuum Unit #58 WIW
9/17/2004

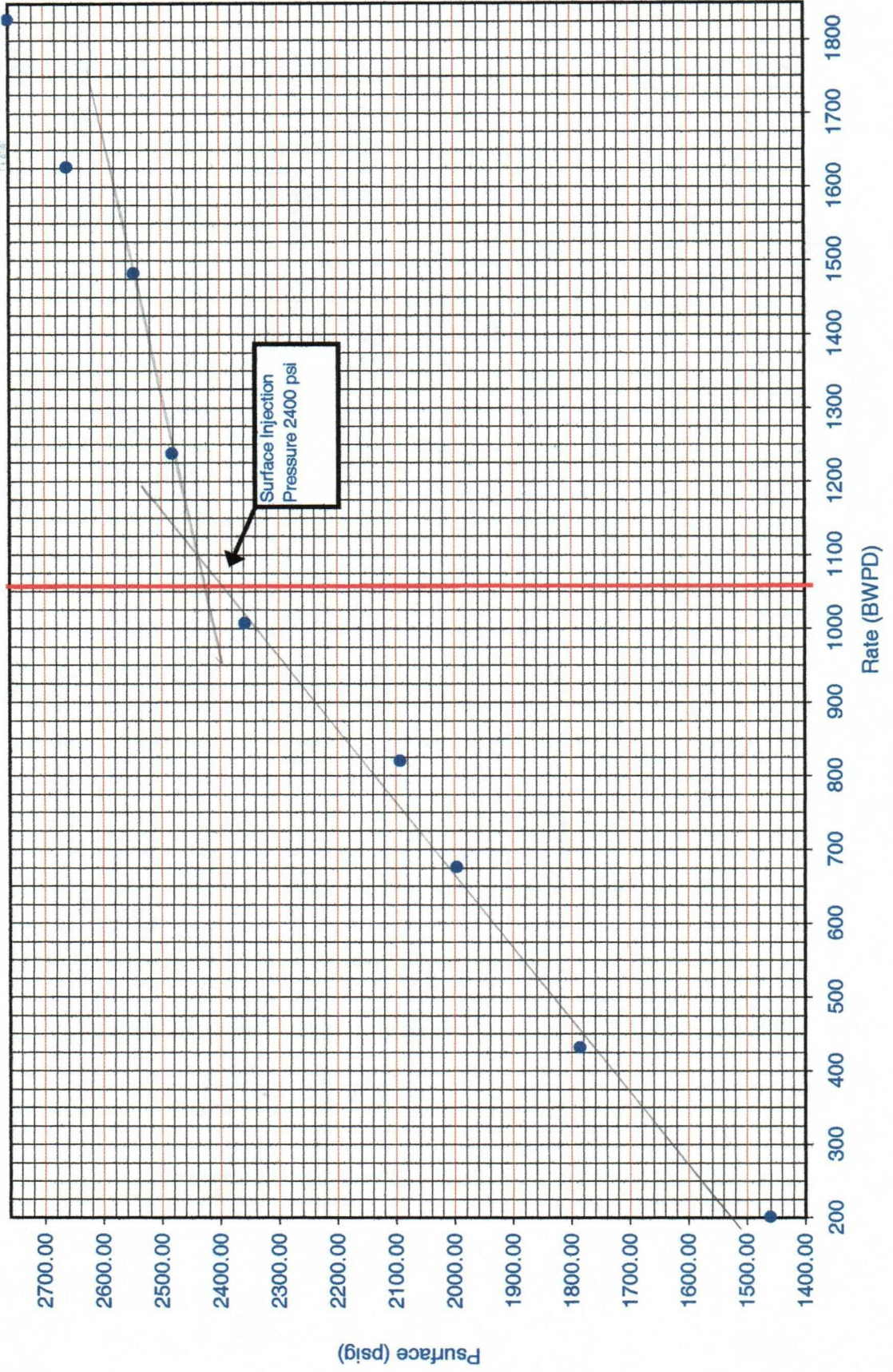
PRECISION
PRESSURE
DATA, INC.



Step Rate Test
Chevron Texaco
West Vacuum Unit #58 WIW
9/17/2004

PRECISION
PRESSURE
DATA, INC.

1052 bwpd



DISTRICT I
P. O. Box 1980, Hobbs, NM 88240

DISTRICT II
P. O. Drawer DD, Artesia, NM 88210

DISTRICT III
1000 Rio Brazos Rd., Aztec, NM 87410

DISTRICT IV
P. O. Box 2088, Santa Fe, NM 87504-2088

State of New Mexico
Energy, Minerals and Natural Resources Department

Form C-102
Revised February 10, 1994

Instructions on back

OIL CONSERVATION DIVISION

PO Box 2088
Santa Fe, NM 87504-2088

Submit to Appropriate District Office

State Lease-4 copies
Fee Lease-3 copies

☐ AMENDED REPORT

WELL LOCATION AND ACREAGE DEDICATION PLAT

1 API Number		2 Pool Code		3 Pool Name Vacuum Grayburg San Andres					
4 Property Code 11126		5 Property Name West Vacuum Unit						6 Well Number 58	
7 OGRID No. 22351		8 Operator Name TEXACO EXPLORATION & PRODUCTION, INC.						9 Elevation 4027'	
10 Surface Location									
UL or lot no. B	Section 3	Township 18-S	Range 34-E	Lot Idn	Feet from the 1330'	North/South line North	Feet from the 1330'	East/West line East	7 County Lea
11 Bottom Hole Location If Different From Surface									
UL or lot no.	Section	Township	Range	Lot Idn	Feet from the	North/South line	Feet from the	East/West line	7 County
12 Dedicated Acres 41.38		13 Joint or Infill		14 Consolidation Code		15 Order No.			

NO ALLOWABLE WILL BE ASSIGNED TO THIS COMPLETION UNTIL ALL INTERESTS HAVE BEEN CONSOLIDATED
OR A NON-STANDARD UNIT HAS BEEN APPROVED BY THE DIVISION.

	17 OPERATOR CERTIFICATION	
	I hereby certify that the information contained herein is true and complete to the best of my knowledge and belief.	
	Signature C. Wade Howard	
	Printed Name C. Wade Howard	
	Position Engineer's Assistant	
	Company Texaco Expl. & Prod. Inc.	
	Date September 17, 1996	
	18 SURVEYOR CERTIFICATION	
	I hereby certify that the well location shown on this plat was plotted from field notes of actual surveys made by me or under my supervision, and that the same is true and correct to the best of my knowledge and belief.	
	Date Surveyed September 10, 1996	
Signature & Seal of Professional Surveyor 		
Certificate No. 7254 John S. Piper		
Sheet		

○ = Staked Location ● = Producing Well ● = Injection Well ◇ = Water Supply Well ◆ = Plugged & Abandon Well
⊙ = Found Section Corner, 2 or 3" Iron Pipe & GLO B.C. ○ = Found 1/4 Section Corner, 1" Iron Pipe & GLO B.C.



**NEW MEXICO ENERGY, MINERALS
& NATURAL RESOURCES DEPARTMENT**

OIL CONSERVATION DIVISION
2040 South Pacheco Street
Santa Fe, New Mexico 87505
(505) 827-7131

October 29, 1999

Texaco Exploration & Production, Inc.
P.O. Box 730
Hobbs, New Mexico 88241-0730

Attn: Mr. Siamak Safargar

**RE: *Injection Pressure Increase,
West Vacuum Unit,
Lea County, New Mexico***

Dear Mr. Safargar:

Reference is made to your request dated October 28, 1999 to increase the surface injection pressure on 4 wells in the above referenced project. This request is based on a step rate tests conducted between October 18 and 20, 1999. The results of the tests have been reviewed by my staff and we feel an increase in injection pressure on these wells is justified at this time.

You are therefore authorized to increase the surface injection pressure on the following wells:

<i>Well and Location</i>	<i>Maximum Surface Injection Pressure</i>
West Vacuum Unit Well No.57 Unit 'P', Section 34 Township 17 South, Range 34 East	1710 PSIG
West Vacuum Unit Well No.58 Unit 'B', Section 3, Township 18 South, Range 34 East	1685 PSIG
West Vacuum Unit Well No.60 Unit 'I', Section 34, Township 17 South, Range 34 East	1890 PSIG
West Vacuum Unit Well No.68 Unit 'A', Section 34, Township 17 South, Range 34 East	1300 PSIG
Located in Lea County, New Mexico.	