



G. C. Jamieson
Assistant Division Manager
Production Department
Hobbs Division

Western Hemisphere Petroleum Division
Continental Oil Company
P. O. Box 460
1001 North Turner
Hobbs, New Mexico 88240
(505) 393-4141

RECEIVED

FEB 24 1972

February 22, 1972

NEW MEXICO OIL CONSERVATION COMMISSION
SANTA FE

DHC-108

Due Mar 10

New Mexico Oil Conservation Commission
P. O. Box 2088
Santa Fe, New Mexico 87501

Attention Mr. A. L. Porter, Jr., Secretary Director

Gentlemen:

Application for Downhole Commingling - Lockhart B-35 Well No. 3
Unit H Section 35 T-21S, R-37E, Lea County, New Mexico

Continental Oil Company, P. O. Box 460, Hobbs, New Mexico, as operator of the Lockhart B-35 lease, respectfully requests Administrative Approval under the provisions of Order No. R-3845, to commingle in the wellbore production from the Blinebry Oil and Drinkard Oil Pools in the subject well. This dual completion was authorized by Administrative Order No. MC-1431. The attached plat shows the Lockhart B-35 lease outlined in red and the number 3 well by the red circle.

On February 17, 1972, the bottom hole pressures in the Blinebry and Drinkard were measured in the well. The Blinebry pressure was measured to be 950 psi after being shut-in for 24 hours. The Drinkard pressure was measured to be 370 psi after being shut-in for 24 hours.

Attached is Form C-116 indicating the latest well tests. Also attached is a production decline curve for each zone. Anticipated production from the well after commingling is 20 BOPD by flowing.

The fluid from these two pools has been commingled at the battery for a number of years and there has been no indication of incompatibility. Both crudes are typical Permian High Gravity crude.

Offset operators and the USGS are being notified of this application by copy of this letter. Your further handling and approval of this application will be sincerely appreciated.

Yours very truly,

50%
50%

dw
Enc

New Mexico Oil Conservation Commission

Page 2

February 22, 1972

Copies to:

New Mexico Oil Conservation Commission

P. O. Box 1980

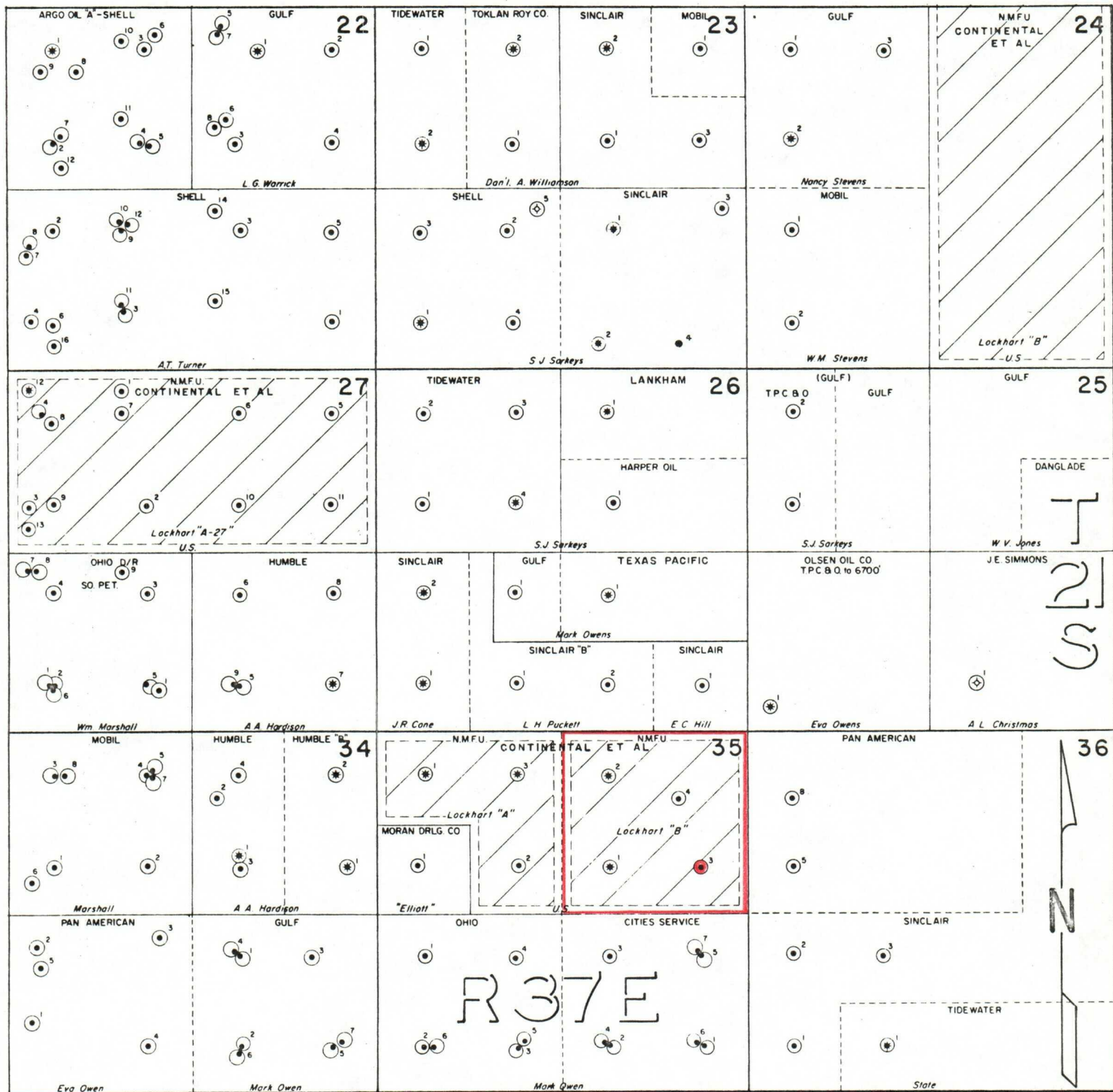
Hobbs, New Mexico 88240

United States Geological Survey

P. O. Box 1157

Hobbs, New Mexico 88240

RLA JJB JWK



CONTINENTAL OIL COMPANY
 PRODUCTION DEPARTMENT
 HOBBS DIVISION
 LOCKHART B-35 LEASE
 LEA COUNTY, NEW MEXICO

Scale: 1" = 2000'

**NEW MEXICO OIL CONSERVATION COMMISSION
GAS-OIL RATIO TESTS**

C-116
Revised 1-1-65

Operator CONTINENTAL OIL COMPANY		Pool Blinebry/Drinkard		County Lea											
Address P. O. Box 460, Hobbs, New Mexico 88240		TYPE OF TEST - (X)		Completion <input type="checkbox"/> Special <input checked="" type="checkbox"/>											
LEASE NAME	WELL NO.	LOCATION			DATE OF TEST	CHOKE SIZE	TBG. PRESS.	DAILY ALLOW-ABLE	LENGTH OF TEST HOURS	PROD. DURING TEST				GAS - OIL RATIO CU.FT./BBL.	
		U	S	T						R	WATER BBL.S.	GRAV. OIL	OIL BBL.S.		GAS M.C.F.
<u>BLINEBRY</u>															
Lockhart B-35	3	H	35	21	37	2-13-72	F35/64	120	10	24	0	40	7	14	2,000
<u>DRINKARD</u>															
Lockhart B-35	3	H	35	21	37	2-4-72	F35/64	260	10	24	0	37	8	43	5,375

No well will be assigned an allowable greater than the amount of oil produced on the official test.
 During gas-oil ratio test, each well shall be produced at a rate not exceeding the top unit allowable for the pool in which well is located by more than 25 percent. Operator is encouraged to take advantage of this 25 percent tolerance in order that well can be assigned increased allowables when authorized by the Commission.
 Gas volumes must be reported in MCF measured at a pressure base of 15,025 psia and a temperature of 60° F. Specific gravity base will be 0.60.

Report casing pressure in lieu of tubing pressure for any well producing through casing.
 Mail original and one copy of this report to the district office of the New Mexico Oil Conservation Commission in accordance with Rule 301 and appropriate pool rules.

I hereby certify that the above information is true and complete to the best of my knowledge and belief.

(Signature)
 Administrative Supervisor

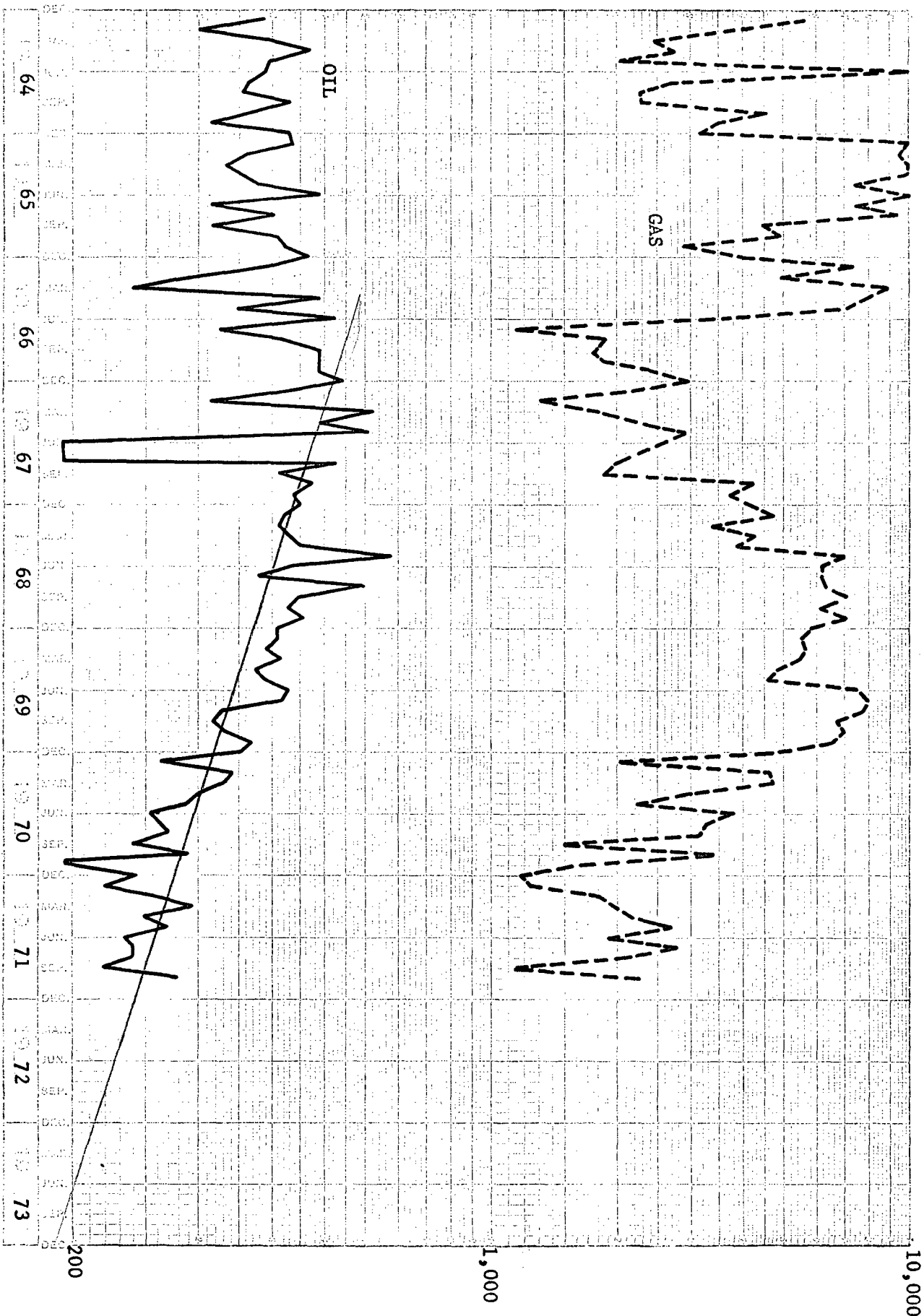
(Title)
 February 17, 1972
(Date)

BARRELS OIL PER MONTH

10,000

1,000

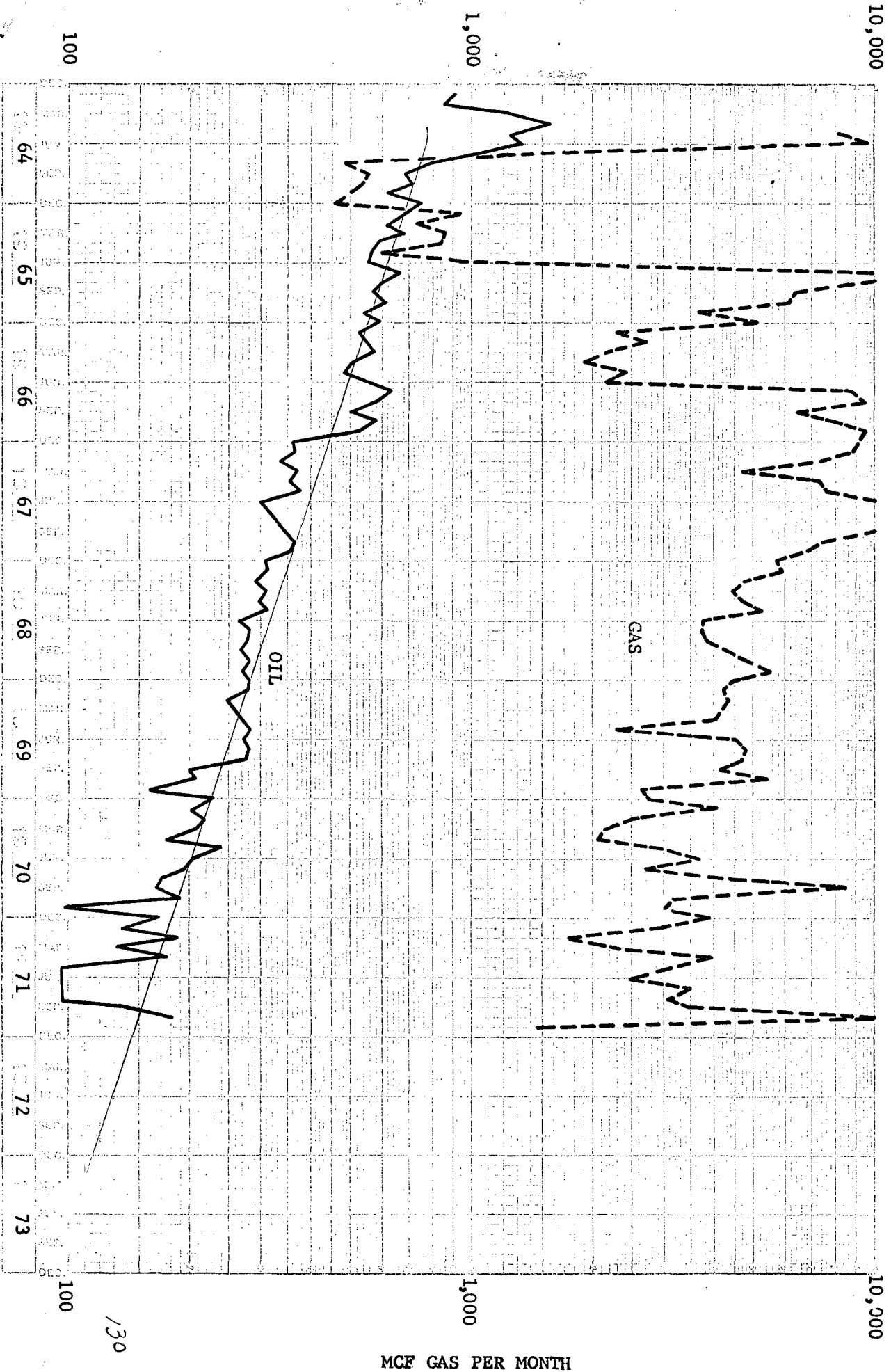
100



DRINKARD OIL
LOCKHART B-35 NO. 3

BARRELS OIL PER MONTH

BLINERY OIL
LOCKHART B-35 NO. 3



OFFSET OPERATORS

Atlantic Richfield Company
P. O. Box 1978
Roswell, New Mexico 87501

Amoco Production Company
P. O. Box 68
Hobbs, New Mexico 88240

Cities Service Oil Company
P. O. Box 69
Hobbs, New Mexico 88240

Chevron Oil Company
P. O. Box 1660
Midland, Texas 79701