

22732250

Rec: 6-16-00
Sup: 7-6-00

DATE IN 6/16/00	SUSPENSE 7/6/00	ENGINEER MS	LOGGED RN	TYPE NSL
-----------------	-----------------	-------------	-----------	----------

ABOVE THIS LINE FOR DIVISION USE ONLY

JUN 16 2000

NEW MEXICO OIL CONSERVATION DIVISION

- Engineering Bureau -

ADMINISTRATIVE APPLICATION COVERSHEET

THIS COVERSHEET IS MANDATORY FOR ALL ADMINISTRATIVE APPLICATIONS FOR EXCEPTIONS TO DIVISION RULES AND REGULATIONS

Application Acronyms:

[NSP-Non-Standard Proration Unit] [NSL-Non-Standard Location]
 [DD-Directional Drilling] [SD-Simultaneous Dedication]
 [DHC-Downhole Commingling] [CTB-Lease Commingling] [PLC-Pool/Lease Commingling]
 [PC-Pool Commingling] [OLS-Off-Lease Storage] [OLM-Off-Lease Measurement]
 [WFX-Waterflood Expansion] [PMX-Pressure Maintenance Expansion]
 [SWD-Salt Water Disposal] [IPI-Injection Pressure Increase]
 [EOR-Qualified Enhanced Oil Recovery Certification] [PPR-Positive Production Response]

[1] TYPE OF APPLICATION - Check Those Which Apply for [A]

[A] Location - Spacing Unit - Directional Drilling

☒ NSL
 ☒ NSP
 ☐ DD
 ☐ SD

Check One Only for [B] or [C]

[B] Commingling - Storage - Measurement

☐ DHC
 ☐ CTB
 ☐ PLC
 ☐ PC
 ☐ OLS
 ☐ OLM

[C] Injection - Disposal - Pressure Increase - Enhanced Oil Recovery

☐ WFX
 ☐ PMX
 ☐ SWD
 ☐ IPI
 ☐ EOR
 ☐ PPR
[2] NOTIFICATION REQUIRED TO: - Check Those Which Apply, or ☐ Does Not Apply[A] ☐ Working, Royalty or Overriding Royalty Interest Owners[B] ☒ Offset Operators, Leaseholders or Surface Owner[C] ☐ Application if One Which Requires Published Legal Notice[D] ☐ Notification and/or Concurrent Approval by BLM or SLO

U.S. Bureau of Land Management - Commissioner of Public Lands, State Land Office

[E] ☒ For all of the above, Proof of Notification or Publication is Attached, and/or,[F] ☐ Waivers are Attached

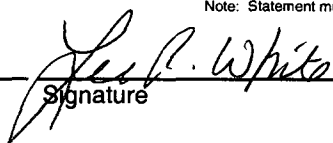
[3] INFORMATION / DATA SUBMITTED IS COMPLETE - Statement of Understanding

I hereby certify that I, or personnel under my supervision, have read and complied with all applicable Rules and Regulations of the Oil Conservation Division. Further, I assert that the attached application for administrative approval is accurate and complete to the best of my knowledge and where applicable, verify that all interest (WI, RI, ORRI) is common. I further verify that all applicable API Numbers are included. I understand that any omission of data, information or notification is cause to have the application package returned with no action taken.

Note: Statement must be completed by an individual with supervisory capacity.

Lee R. White

Print or Type Name



Signature

Engineering Manager

Title

6/13/00

Date



2000 POST OAK BOULEVARD / SUITE 100 / HOUSTON, TEXAS 77056-4400

WWW.APACHECORP.COM
[713] 296-6000

June 13, 2000

State of New Mexico
Oil Conservation Division
2040 S. Pacheco
Santa Fe, New Mexico 87505

**Re: Application for a Non-Standard Location and Proration Unit
Owen 'B' No. 6
Blinebry Oil & Gas Pool (Pro Gas) (72480)
Lea County, New Mexico**

Apache Corporation would like to request administrative approval of a Non-Standard Location for the referenced well in the Blinebry Oil & Gas Pool (Pro Gas). We also request a reduction from a 160 acre proration unit to 120 acres and simultaneous dedication of the 120 acres to the Owen 'B' No. 4 and Owen 'B' No. 6.

To support this request we submit the following information:

- 1) The Blinebry Pool was recently added to the existing Owen 'B' No. 6 well, which is downhole commingled in the Tubb O&G Pool (86440), Drinkard Pool (19190) and Wantz Abo Pool (62700), and is producing gas only
- 2) Owen 'B' No. 1, located in Unit M, 990' FSL & 330' FWL, is producing from the Blinebry Pool and is classified as an oil well
- 3) Owen 'B' No. 6 has an existing Non-Standard Location (NSL-4304 (SD) and simultaneous dedication in the Tubb O&G Pool
- 4) NM-OCD Form C-102 for the Owen 'B' No. 4
- 5) NM-OCD Form C-102 for the Owen 'B' No. 6

- 6) Plat of Section 34 with Owen 'B' Lease (consisting of 160 acres) outlined
- 7) Copy of letter sent (by Certified Mail) to all Offset operators in Section 34

If you have any questions or require additional information regarding this application, please contact me at 713-296-6338. Thank you.

Sincerely,

APACHE CORPORATION

A handwritten signature in black ink, appearing to read 'Debra J. Anderson', is written over a horizontal line.

Debra J. Anderson
Sr. Engineering Technician

Attachments

cc: New Mexico Oil Conservation Division
District I
1625 N. French Drive
Hobbs, New Mexico 88240

District I
1625 N. French Drive, Hobbs, NM 88240

District II
P O Drawer DD, Artesia, NM 88210

District III
1000 Rio Brazos Rd., Aztec, NM 87410

District IV
2040 South Pacheco, Santa Fe, NM 87505

State of New Mexico
Energy, Minerals and Natural Resources Department

OIL CONSERVATION DIVISION

2040 S. Pacheco
Santa Fe, New Mexico 87505

Form C-102

Revised October 18, 1994

Instruction on Back

Submit to Appropriate District Office

State Lease - 4 Copies

Fee Lease - 3 Copies

☐ AMENDED REPORT

WELL LOCATION AND ACREAGE DEDICATION PLAT

1 API Number 30-025-34321		2 Pool Code 72480		3 Pool Name Blinebry Oil and Gas (Pro Gas)	
4 Property Code 22879		5 Property Name Owen 'B'			6 Well Number 6
7 OGRID No. 000873		8 Operator Name Apache Corporation			9 Elevation 3429

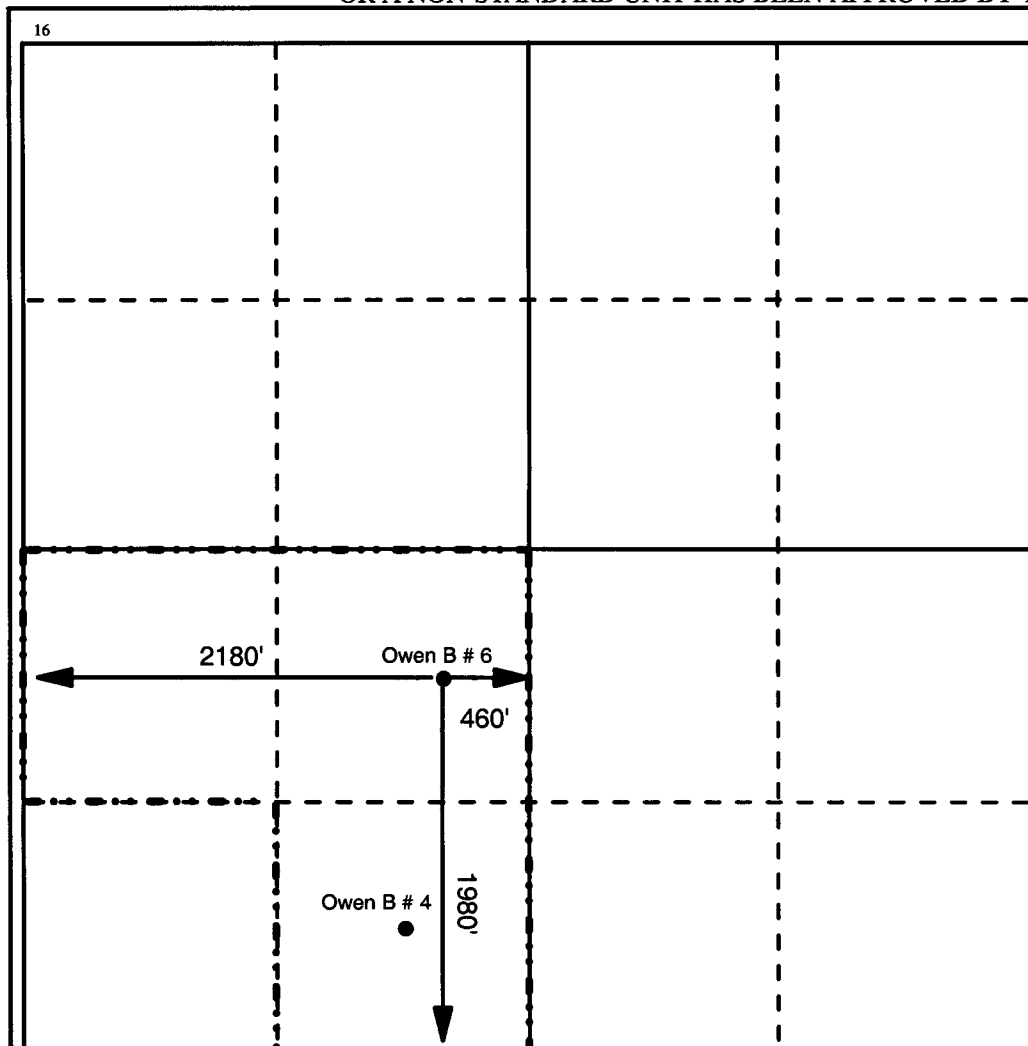
10 Surface Location

UL or Lot No. K	Section 34	Township 21S	Range 37E	Lot Idn	Feet from the 1980	North/South line South	Feet from the 2180	East/West line West	County Lea
---------------------------	----------------------	------------------------	---------------------	---------	------------------------------	----------------------------------	------------------------------	-------------------------------	----------------------

11 Bottom Hole Location If Different From Surface

UL or Lot No.	Section	Township	Range	Lot Idn	Feet from the	North/South line	Feet from the	East/West line	County
12 Dedicated Acres 120	13 Joint or Infill	14 Consolidation Code		14 Order No.					

**NO ALLOWABLE WILL BE ASSIGNED TO THIS COMPLETION UNTIL ALL INTERESTS HAVE BEEN CONSOLIDATED
OR A NON-STANDARD UNIT HAS BEEN APPROVED BY THE DIVISION**



17 OPERATOR CERTIFICATION

I hereby certify that the information contained herein is true and complete to the best of my knowledge and belief.

Signature

Printed Name

Debra J. Anderson

Title

Sr. Engineering Technician

Date

6/12/2000

18 SURVEYOR CERTIFICATION

I hereby certify that the well location shown on this plat was plotted from field notes of actual surveys made by me or under my supervision, and that the same is true and correct to the best of my belief.

Date Surveyed

Signature and Seal of Professional Surveyor

Certificate Number

District I
1625 N. French Drive, Hobbs, NM 88240

District II
P O Drawer DD, Artesia, NM 88210

District III
1000 Rio Brazos Rd., Aztec, NM 87410

District IV
2040 South Pacheco, Santa Fe, NM 87505

State of New Mexico
Energy, Minerals and Natural Resources Department

OIL CONSERVATION DIVISION

2040 S. Pacheco
Santa Fe, New Mexico 87505

Form C-102

Revised October 18, 1994

Instruction on Back

Submit to Appropriate District Office

State Lease - 4 Copies

Fee Lease - 3 Copies

☐ AMENDED REPORT

WELL LOCATION AND ACREAGE DEDICATION PLAT

1 API Number 30-025-06999		2 Pool Code 72480		3 Pool Name Blinebry Oil and Gas (Pro Gas)	
4 Property Code 22879		5 Property Name Owen 'B'			6 Well Number 4
7 OGRID No. 000873		8 Operator Name Apache Corporation			9 Elevation 3435

10 Surface Location

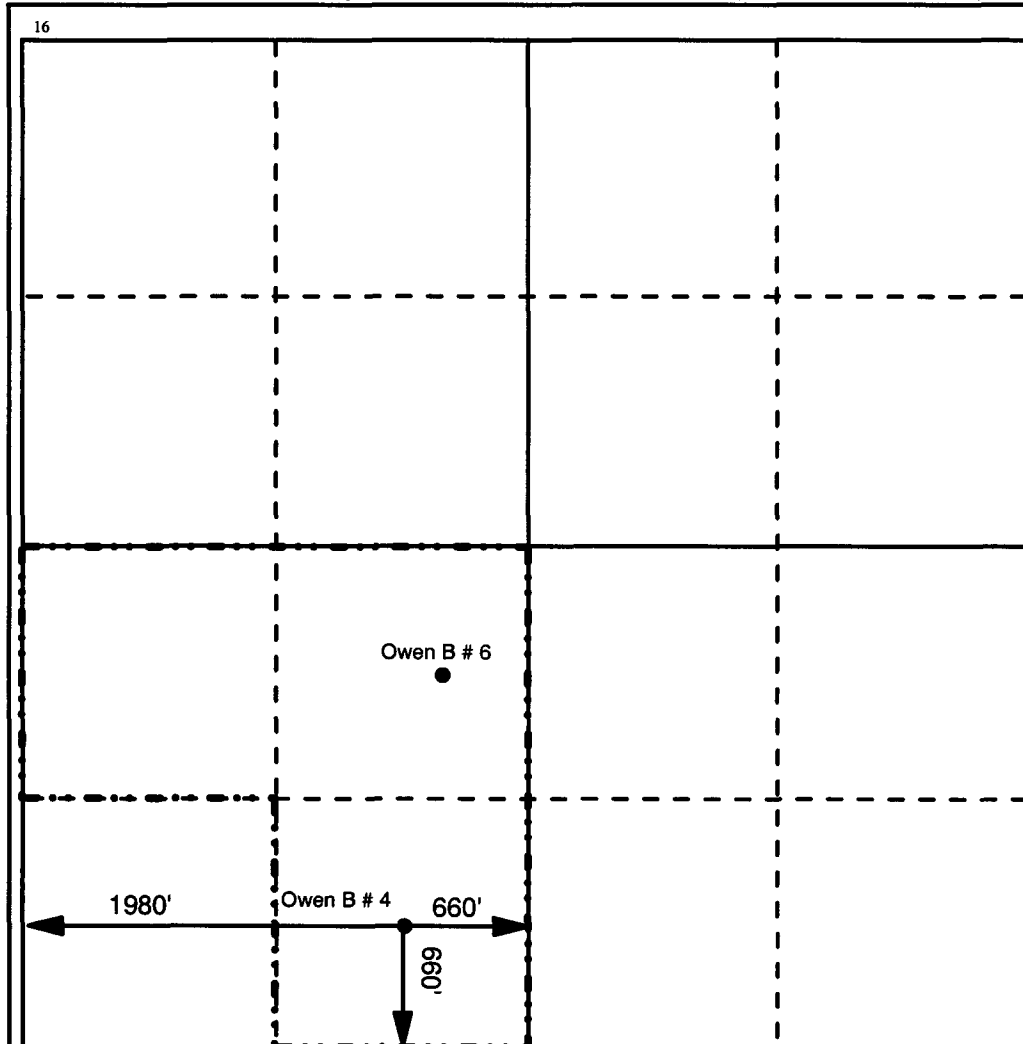
UL or Lot No. N	Section 34	Township 21S	Range 37E	Lot Idn	Feet from the 660	North/South line South	Feet from the 1980	East/West line West	County Lea
---------------------------	----------------------	------------------------	---------------------	---------	-----------------------------	----------------------------------	------------------------------	-------------------------------	----------------------

11 Bottom Hole Location If Different From Surface

UL or Lot No.	Section	Township	Range	Lot Idn	Feet from the	North/South line	Feet from the	East/West line	County
---------------	---------	----------	-------	---------	---------------	------------------	---------------	----------------	--------

12 Dedicated Acres 120	13 Joint or Infill	14 Consolidation Code	14 Order No.
----------------------------------	--------------------	-----------------------	--------------

NO ALLOWABLE WILL BE ASSIGNED TO THIS COMPLETION UNTIL ALL INTERESTS HAVE BEEN CONSOLIDATED
OR A NON-STANDARD UNIT HAS BEEN APPROVED BY THE DIVISION



17 OPERATOR CERTIFICATION

I hereby certify that the information contained herein is true and complete to the best of my knowledge and belief.

Signature

Printed Name

Debra J. Anderson

Title

Sr. Engineering Technician

Date

6/12/2000

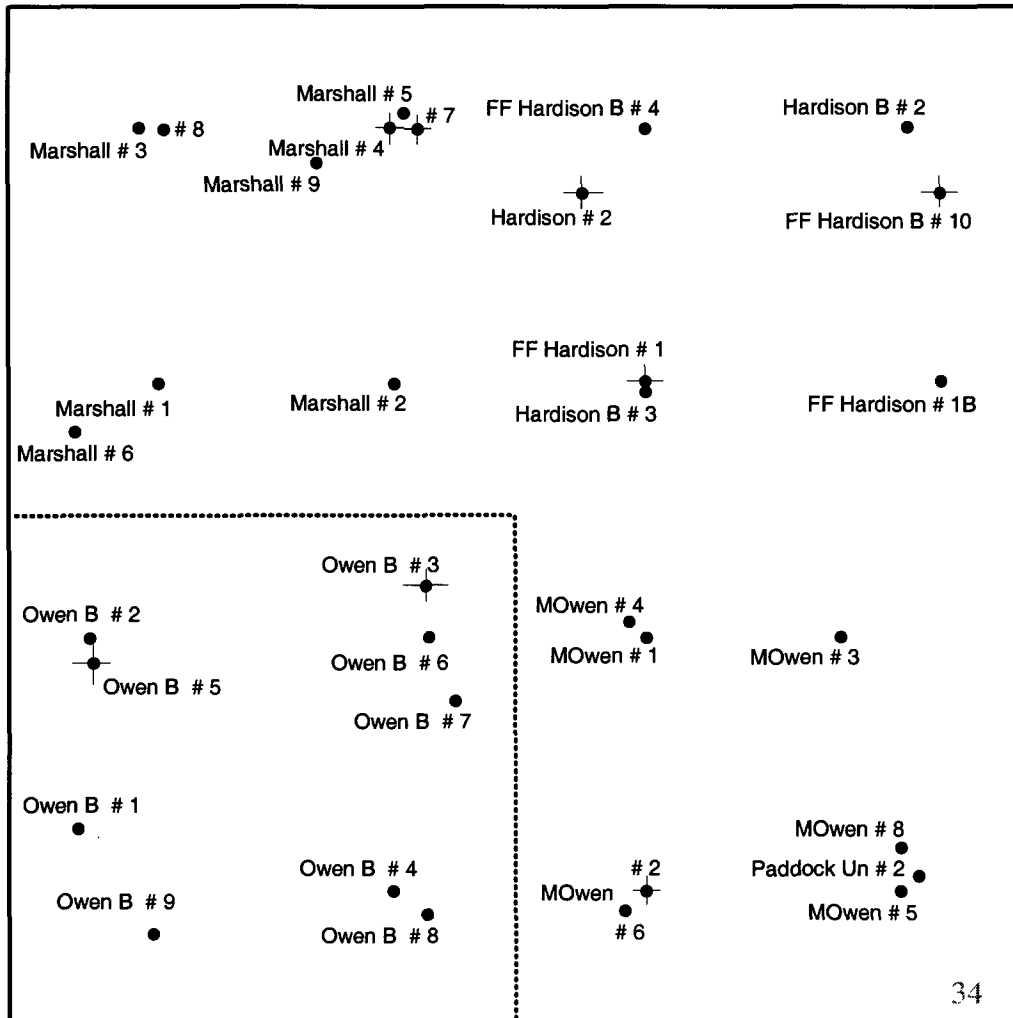
18 SURVEYOR CERTIFICATION

I hereby certify that the well location shown on this plat was plotted from field notes of actual surveys made by me or under my supervision, and that the same is true and correct to the best of my belief.

Date Surveyed

Signature and Seal of Professional Surveyor

Certificate Number



OWEN 'B' LEASE
SECTION 34
T21S - R37E
LEA COUNTY, NEW MEXICO
SCALE: 1" = 1000'

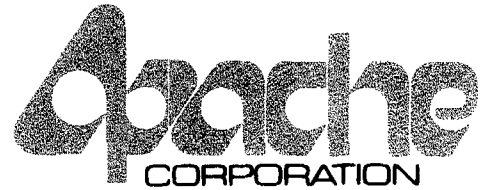
**OFFSET OPERATORS
OWEN 'B' LEASE
SECTION 34
T-21S, R-37E
LEA COUNTY, NEW MEXICO**

Chevron USA Inc.
P O Box 1150
Midland, Texas 79702
Certified Receipt # Z-142-208-287

Exxon - Mobil
P O Box 4697
Houston, Texas 77210-4697
Certified Receipt # Z-142-208-288

Titan Resources
500 W. Texas
Suite 500
Midland, Texas 79701
Certified Receipt # Z-142-208-289

2000 POST OAK BOULEVARD / SUITE 100 / HOUSTON, TEXAS 77056-4400



WWW.APACHECORP.COM
[713] 296-6000

June 13, 2000

Offset Operators

**Re: Application for a Non-Standard Location and Proration Unit
Owen 'B' Lease
Well No. 4 and 6
Blinebry Oil & Gas (Pro Gas) Pool
Lea County, New Mexico**

Attached please find a copy of an Application for a Non-Standard Location and Proration Unit that Apache Corporation has filed with the New Mexico Oil Conservation Division. If you have an objection to this application, you must notify the OCD in writing within 20 days from the date of this letter.

Sincerely,

APACHE CORPORATION

A handwritten signature in black ink, appearing to read "Debra J. Anderson", written over a horizontal line.

Debra J. Anderson
Sr. Engineering Technician

Attachments