

PKRV0315455705

MS

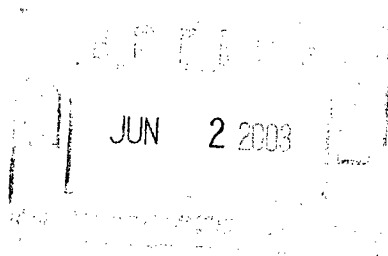
NSL

6/22/03

Jicarilla Apache Energy Corporation

28 May 2003

Mike Stogner
State of New Mexico
Oil Conservation Division
1220 South St. Francis Dr.
Santa Fe, New Mexico 87505



Dear Sir:

Jicarilla Apache Energy Corporation (JAECO) herein requests NMOCD approval for a non-standard location on the following well:

JV5 #7-Dakota ¹⁹⁸¹ 1931' FNL & 588' FWL, Section 5, T23N, R3W;
Rio Arriba County, New Mexico.

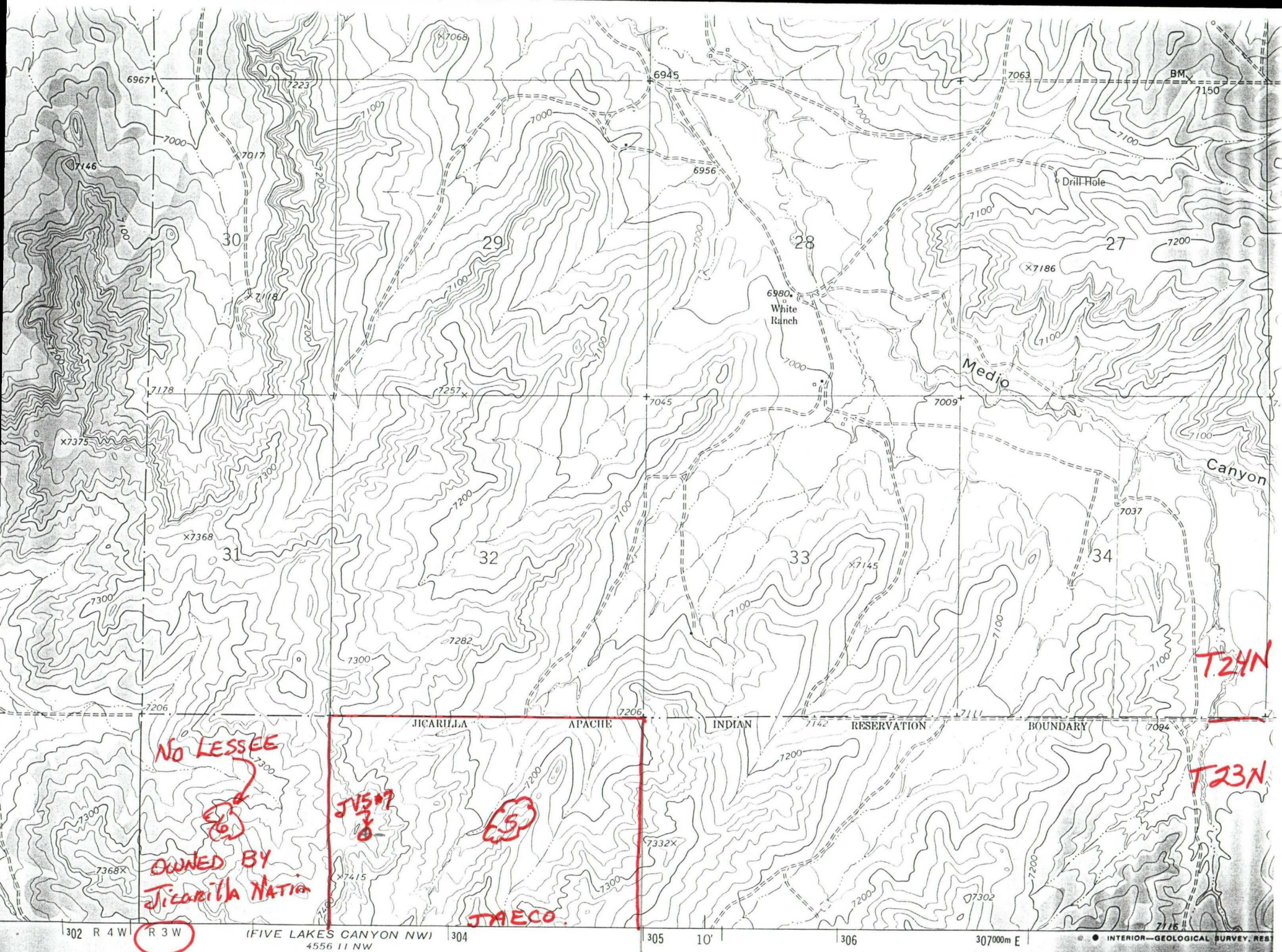
The reason JV5 #7 was constructed at this location is that the area immediately east is very steep and rugged. This is shown to some degree on the included topographic map of the area.

Mike, per our phone conversation at 9:30 a.m. on May 28, 2003, I am including the C102, land plat and lease holders for the adjacent sections. Also as I stated, JAECO is a Federally Chartered Corporation wholly owned by the Jicarilla Apache Nation and as such the Nation is in full agreement with the location of the subject well.

Thank you very much for your rapid response to this request, as this well has been completed and is ready to first deliver. Please feel free to contact me at 505-759-3224 (office) or 505-330-1416 (cell). Also my E-mail address is jevans232000 @ yahoo.com.

Sincerely,

Jesse Evans, CEO & President
Jicarilla Apache Energy Corporation.



NO LESSEE

OWNED BY
JICARILLA NATIO

JV507

ES

JAECO

T24N

T23N

SCALE 1:24 000

1 MILE

ROAD CLASSIFIC

OCT 2 1 2002

UNITED STATES
DEPARTMENT OF THE INTERIOR
BUREAU OF LAND MANAGEMENT

APPLICATION FOR PERMIT TO DRILL OR DEEPEN

1a. TYPE OF WORK

DRILL ☒DEEPEN ☐

b. TYPE OF WELL

OIL WELL ☐GAS WELL ☒OTHER ☐SINGLE ZONE ☒MULTIPLE ZONE ☐

2. NAME OF OPERATOR

Jicarilla Apache Energy Corporation

3. ADDRESS AND TELEPHONE NO.

P.O. Box 710, Dulce, New Mexico 87528 Mr. Jesse Evans (505)759-3224

4. LOCATION OF WELL (Report location clearly and in accordance with any State requirements.)

At surface

1981' FNL & 588' FWL, Sec 5, T23N, R3W, NMPM

At proposed prod. zone

A/A

14. DISTANCE IN MILES AND DIRECTION FROM NEAREST TOWN OR POST OFFICE*

10 miles WSW of Lindrith, New Mexico

15. DISTANCE FROM PROPOSED*

LOCATION TO NEAREST

PROPERTY OR LEASE LINE, FT. 588'

(Also to nearest ddg, if any)

18. DISTANCE FROM PROPOSED LOCATION*

TO NEAREST WELL, DRILLING COMPLETED,

OR APPLIED FOR, ON THIS LEASE, FT.

1622'

16. NO. OF ACRES IN LEASE

19. PROPOSED DEPTH

7760'

17. NO. OF ACRES ASSIGNED

TO THIS WELL 160

20. ROTARY OR CABLE TOOLS

Rotary

21. ELEVATIONS (Show whether DF, RT, GR, etc.)

7369' GL

22. APPROX. DATE WORK WILL START*

July, 2002

23.

PROPOSED CASING AND CEMENTING PROGRAM

SIZE OF HOLE	GRADE, SIZE OF CASING	WEIGHT PER FOOT	SETTING DEPTH	QUANTITY OF CEMENT
12 1/4"	J-55, 8 5/8"	24	320'	225 sks (266cf) - Circ to surface
7 7/8"	K-55/N-80 4.5"	10.5, 11.6	7760'	1714 sks (3240 cf) - 2 stg - Circ to surface

Jicarilla Energy Corporation will spud this well in the San Jose formation. A 12 1/4" hole will be drilled to 320' using a fresh water base gel mud. 8 5/8" surface casing will be run and cemented with sufficient volume to circulate cement to surface. WOC 12 hours. Nipple up 11" 2000# BOPE and test to a minimum of 600 psi for 30 minutes. A 7 7/8" hole will be drilled to TD using a fresh water non-dispersed system. Run Induction and Density/Neutron logs at TD. All Gal/DK zones will be analyzed to total depth, and if potentially commercial, a 4 1/2" production casing will be set to TD. The casing will be cemented in 2 stages with sufficient cement volume to circulate to surface. Release drilling rig. Move in completion unit. Run cased hole correlation logs. Pressure test casing to 3000 psi for 30 minutes. Perforate selected Gal/DK intervals and fracture stimulate, if necessary.

This program includes a 50' right-of-way for access road and gas pipeline construction.

Surface: Jicarilla Apache Reservation.

IN ABOVE SPACE DESCRIBE PROPOSED PROGRAM: If proposal is to deepen, give data on present productive zone and proposed new productive zone. If proposal is to drill or deepen directionally, give pertinent data on subsurface locations and measured true vertical depths. Give blowout preventer program, if any.

24.

SIGNED

TITLE Agent

DATE

5/30/02

(Leave space for Federal or State office use)

PERMIT NO.

APPROVAL DATE

* This approval does not warrant or certify that the applicant holds legal or equitable title to those rights in the subject lease which would entitle the applicant to conduct operations thereon.

CONDITIONS OF APPROVAL, IF ANY:

APPROVED BY

TITLE

DATE

OCT 2 2 2002

District I
1625 N. French Dr., Hobbs, NM 88240
District II
101 W. Grand Avenue, Artesia, NM 88210
District III
1000 Rio Brazos Rd., Aztec, NM 87410
District IV
1220 S. St. Francis Dr., Santa Fe, NM 87505

State of New Mexico
Energy, Minerals & Natural Resources Department
OIL CONSERVATION DIVISION
1220 South St. Francis Dr.
Santa Fe, NM 87505

Form O-102
Revised August 15, 2000
Submit to Appropriate District Office
State Lease - 4 Copies
Fee Lease - 3 Copies

☐ AMENDED REPORT

WELL LOCATION AND ACREAGE DEDICATION PLAT

¹ API Number	² Pool Code 39189	³ Pool Name West Lindrith Gallup-Dakota
⁴ Property Code	⁵ Property Name JIC Apache JV 5	⁶ Well Number 7
⁷ OGRID No. 11859	⁸ Operator Name Jicarilla Apache Energy Corporation	⁹ Elevation 7369'

¹⁰ Surface Location

UL or lot no. E	Section 5	Township 23N	Range 3W	Lot Idn	Feet from the 1981	North/South line North	Feet from the 588	East/West line West	Rio Arriba	County
--------------------	--------------	-----------------	-------------	---------	-----------------------	---------------------------	----------------------	------------------------	---------------	--------

¹¹ Bottom Hole Location If Different From Surface

UL or lot no.	Section	Township	Range	Lot Idn	Feet from the	North/South line	Feet from the	East/West line	County
---------------	---------	----------	-------	---------	---------------	------------------	---------------	----------------	--------

¹² Dedicated Acres 160	¹³ Joint or Infill Y	¹⁴ Consolidation Code	¹⁵ Order No.
--------------------------------------	------------------------------------	----------------------------------	-------------------------

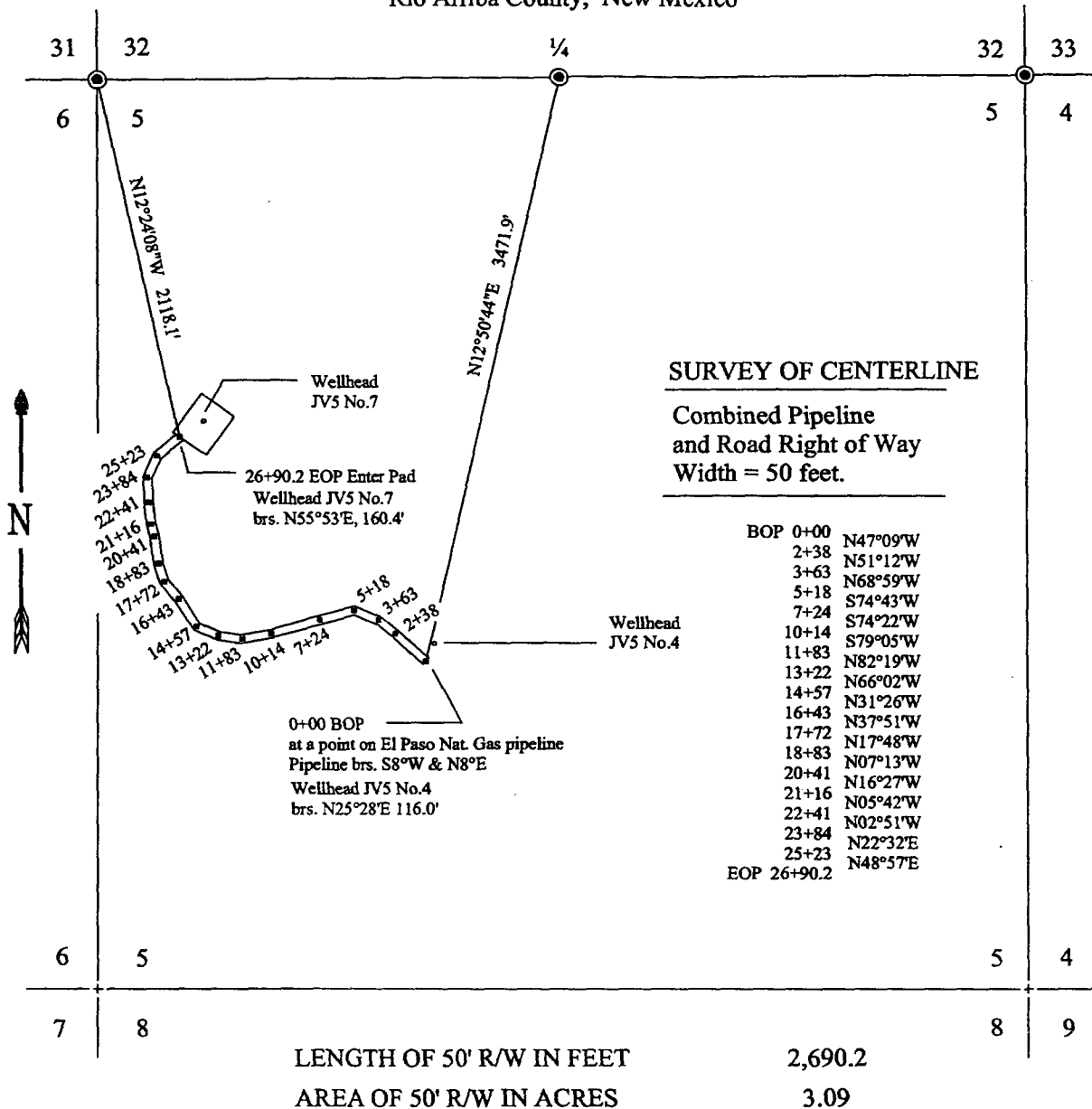
NO ALLOWABLE WILL BE ASSIGNED TO THIS COMPLETION UNTIL ALL INTERESTS HAVE BEEN CONSOLIDATED OR A NON-STANDARD UNIT HAS BEEN APPROVED BY THE DIVISION

	¹⁶ OPERATOR CERTIFICATION I hereby certify that the information contained herein is true and complete to the best of my knowledge and belief. Signature Charles Neeley Printed Name Agent Title 05/28/02 Date
	¹⁷ SURVEYOR CERTIFICATION I hereby certify that the well location shown on this plat was plotted from field notes of actual surveys made by me or under my supervision, and that the same is true and correct to the best of my belief. May 17, 2002 Date of Survey Signature and Seal of Professional Surveyor

JICARILLA APACHE ENERGY CORPORATION

Jicarilla Apache JV5 No.7

1981 FNL, 588 FWL, Sec. 5, T23N, R3W, NMPM
Rio Arriba County, New Mexico



Legend

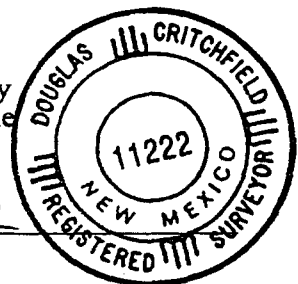
- Found 1915 G.L.O. Brass Cap Monument
- Bearings are based on record S89°46'W between
NE cor. and NW cor. sec. 5, T23N, R3W.

0 1000
One inch equals 1000 feet

Certification

I, D.W. Critchfield, New Mexico Professional Surveyor No.11222, do hereby
certify this plat to represent a survey completed by me in compliance with the
Minimum Standards for Surveying in New Mexico

DW Critchfield July 29, 2002
Velarde Energy Service, Post Office Box 919, Dulce, New Mexico 87528



R 3W

③① ENERGEN	③② ENERGEN BRECK	③③ ENERGEN CONOCO
⑥ NON-LEASED.	JV547 (DK) • ⑤ JAECO	④ RIO CHAMA
⑦ APACHE CORP. SHORELINE	⑧ APACHE CORP.	⑨ ENERGEN RODDY PROD

T 24N.

T 23N