

# CAULKINS OIL COMPANY

P. O. BOX 780  
FARMINGTON, NEW MEXICO 87401

October 3, 1985

Mr. Frank Chavez  
Oil Conservation Division  
1000 Rio Brazos Road  
Aztec, New Mexico 87410

Dear Frank,

As set forth in rule 303-C we hereby request administration approval for downhole commingling of our well No. 625-E, located in SW 1/4 of section 8, 26N, 6W Rio Arriba County, New Mexico.

In support of commingling we offer the following:

- (1) Mesa Verde Zone capable of producing low volumes only and tests show it will produce fluid, therefore it will be necessary to have some form of artificial lift.
- (2) As shown on attached schematic, Packer was set between Zones with Reverse Flow Check Valve installed to prevent crossflow from Dakota Zone to Mesa Verde Zone.
- (3) Fluids from both Zones compatible.
- (4) Ownership common, including working interests and Royalty interest.
- (5) Bottomhole pressure results attached show Mesa Verde BHP 1222 @ 5000' and Dakota BHP 1822 @ 5000'.

Rule #303-C  
Section 2

- (a) Caulkins Oil Company  
P.O. Box 780  
Farmington, New Mexico 87499
- (b) Breech "A" 625-E  
Unit L, Section 8, 26N, 6W  
Rio Arriba County, New Mexico

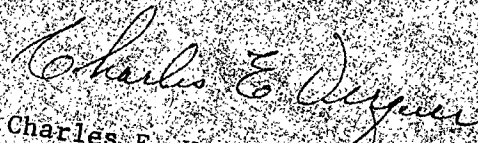
RECEIVED  
OCT 07 1985  
OIL CON. DIV.  
DIST. 3

Blanco Mesa Verde - Basin Dakota Zones to be Commingled.

- (c) 9 section plat attached showing all offset acreage, also shows all wells now commingled in Mesa Verde - Dakota Zones, identified by arrow.
- (d) NA
- (e) Zones were tested individually after running BHP Survey.  
Dakota Zone Rate of Flow after flowing 3 hours thru 3/4" positive choke 1,727 MCFPD.  
Mesa Verde Zone Rate of Flow after flowing 3 hours thru 3/4" positive choke 580 MCFPD.  
This test shows Dakota produces 75% of all Gas and Mesa Verde produces 25% of all Gas.  
Both Zones produce Condensate.  
Estimate same amount from each Zone.  
Copies of Completion Report for each Zone attached.

- (f) BHP results attached.
- (g) Fluids are compatible and sale value is the same.
- (h) A 3 hour Potential Test run 10-1-85 shows:  
Rate of Flow for commingled Zones as 2,440 MCFPD.  
Individue Potential Tests run previously show combined total to be 2,307 MCFPD.
- (i) From results of tests run on individual Zones. We recommend production be split as follows:  
Dakota Zone - 75% of all Gas and 50% of all Oil.  
Mesa Verde Zone - 25% of all Gas and 50% of all Oil.
- (j) All offset operators have been furnished with copy of the application.  
Receipt for Certified Mail attached.  
Copy of Sundry Notice sent to BLM, attached.

Yours very truly,



Charles E. Verquer, Supt.  
Caulkins Oil Company

cc: Denver  
El Paso Natural Gas Company  
Mesa Petroleum

# BAKER PACKERS DIVISION

Blanco Mesa Verde  
Basin Dakota

DATE \_\_\_\_\_ WELL NO. 625-E LEASE Breech "A" FIELD \_\_\_\_\_

← 9 5/8" 36# H-40 Casing cemented @ 421' with 250 sacks (295 Cu.Ft.)  
Cement circulated to surface.

← Cement Stage Tool set @ 3849'. Cemented thru Stage Tool with 500  
sacks (825 Cu.Ft.) Light Weigh 5 Plus 4% Gel and 12 1/4# Gilsonite  
per sack. Followed by 100 sacks (118 Cu.Ft.) Neat Cement.

← Mesa Verde Perforations 4516' to 5230'.

← Baker Reverse Flow Check Valve.  
← Baker Model "R3" Packer set @ 5370'.

← Cement Stage Tool set @ 5327'. Cemented thru Stage Tool with 250  
sacks (412.50 Cu.Ft.) Light Weigh 5 Plus 4% Gel and 12 1/4# Gilsonite  
per sack. Followed by 100 sacks (118 Cu.Ft.) Latex Cement.

← 1 1/2" EUE 10rd thd 3.25# J-55 Tubing set @ 7271' for Mesa Verde - Dakota  
commingled production.

← Dakota Perforations 7120' to 7299'.

← 5 1/2" 15.5 & 17# Casing set @ 7328' with 250 sacks (412.50 Cu.Ft.)  
Light Weigh 5 Plus 4% Gel and 12 1/4# Gilsonite per sack. Followed by  
100 sacks (188 Cu.Ft.) Latex Cement.

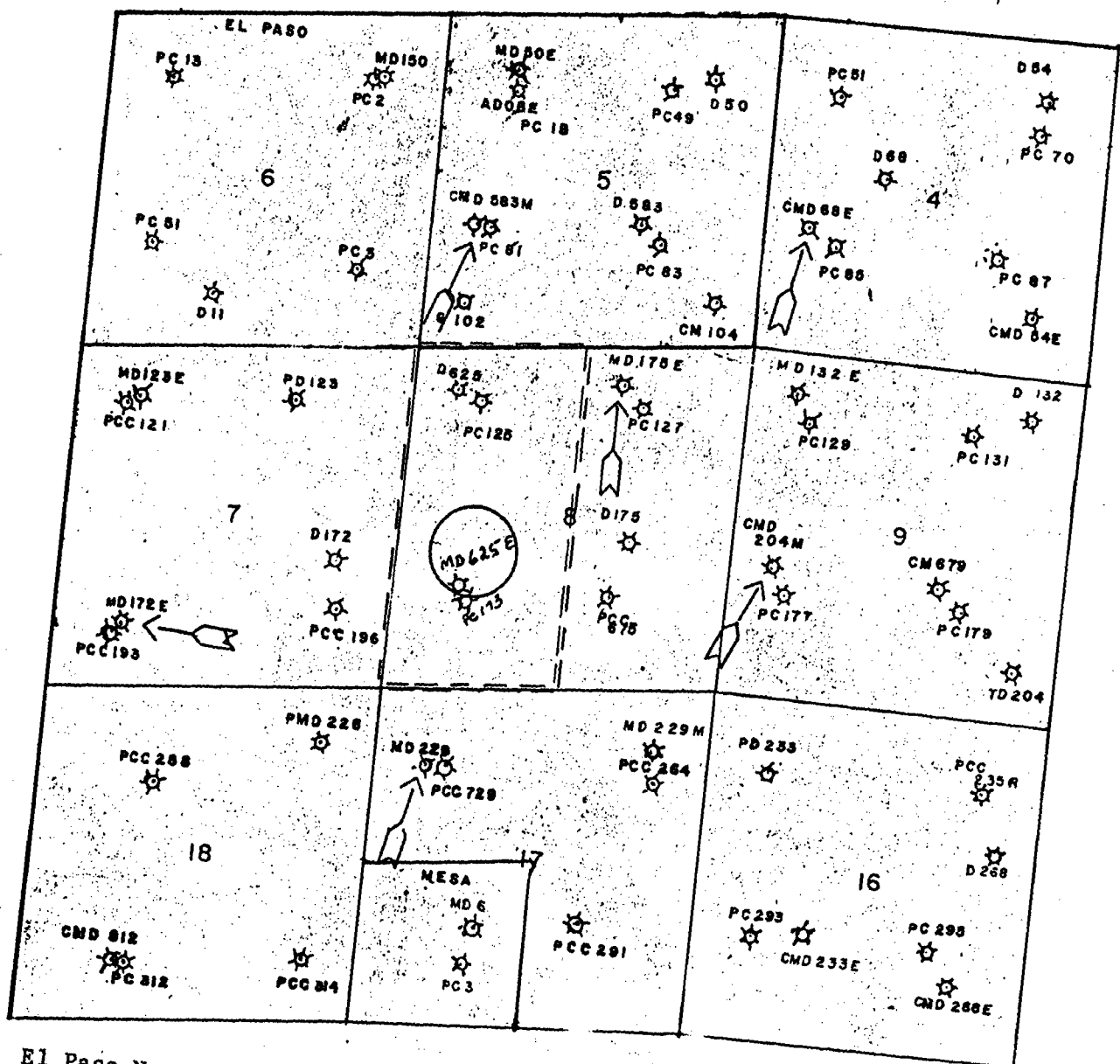
← TD 7420'

# CAULKINS OIL COMPANY

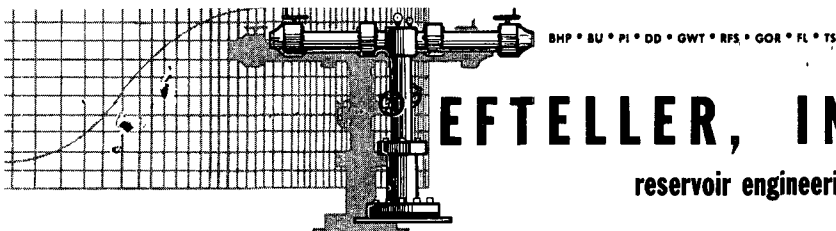
P. O. BOX 780  
FARMINGTON, NEW MEXICO 87401

Breach "A" 625-E  
1590' F/S & 1000' F/W  
Section 8, 26 North 6 West  
Rio Arriba County, New Mexico

Proration Unit West Half of Section  
Well No. 625-E Identified with circle  
Arrows identify all other wells on map now commingled Mesa Verde - Dakota's  
All acreage not otherwise identified operated by Caulkins Oil Company



El Paso Natural Gas Company - P.O. Box 900 Farmington, New Mexico  
Mesa Petroleum Company - 1700 Broadway Suite 400 Denver, Colorado



MIDLAND, TEXAS / FARMINGTON, NEW MEXICO  
GRAND JUNCTION, COLORADO

P. O. Box 5247  
Midland, Texas 79704  
(915) 682-5574

September 17, 1985

Caulkins Oil Company  
P.O. Box 340  
Bloomfield, New Mexico 87413

Attention: Mr. Charles Verquer

Subject: Bottomhole Pressure Measurements  
Breech "A" No. 625-E  
Basin Dakota Field  
Dakota & Mesa Verde Formation  
Rio Arriba County, New Mexico  
Our File No. 2-17326-WL&P

Gentlemen:

Attached hereto are the results of bottomhole pressure measurements which were conducted on the above captioned well September 9, 1985.

The data presented are in tabular and graphical form.

It has been our pleasure to have conducted this service for you. If we may be of further assistance, please call us at any time.

Respectfully submitted,

TEFTELLER, INC.

Neil Tefteller

NT/ct

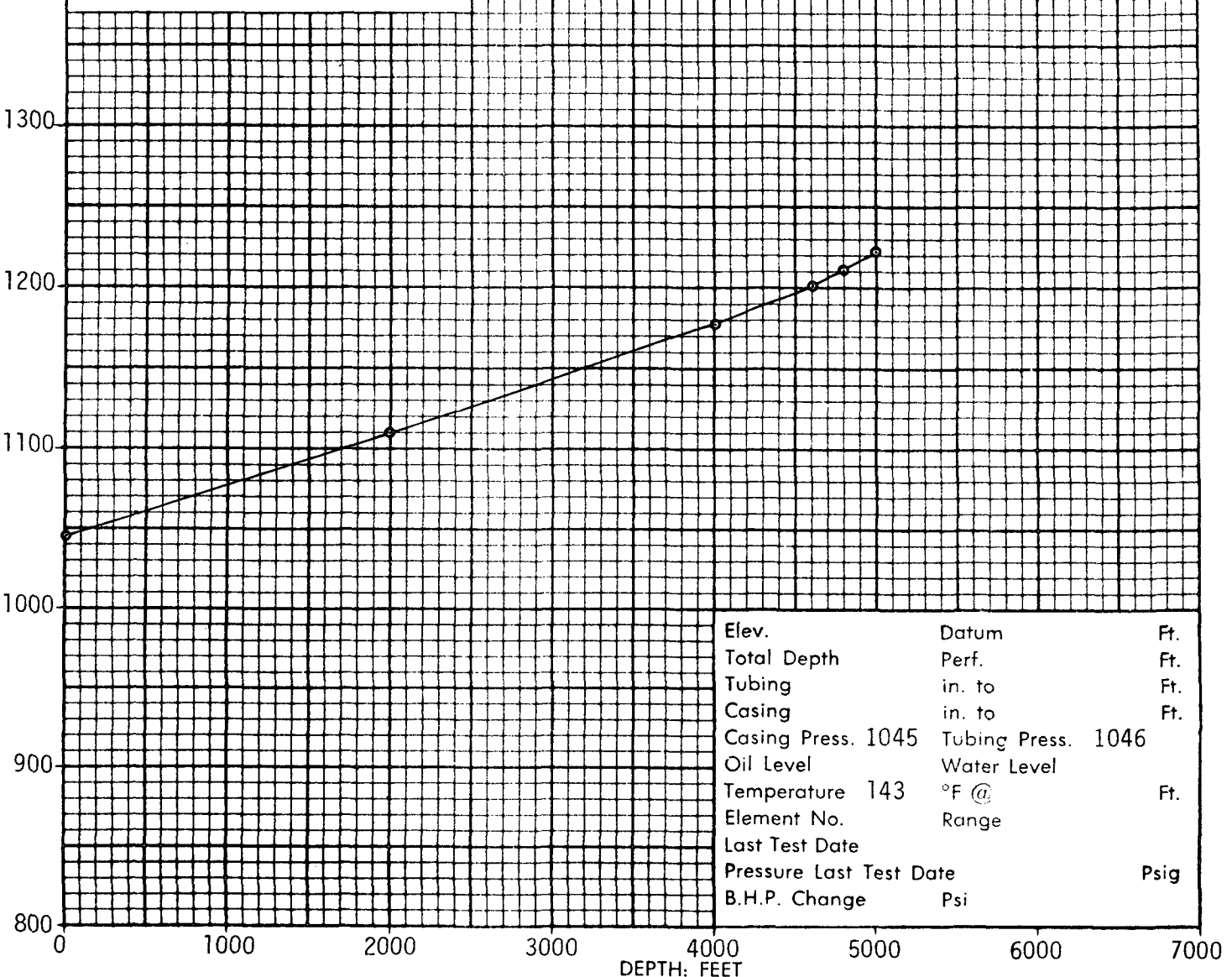


Company CAULKINS OIL COMPANY Lease BREECH "A" Well No. 625-E  
Field \_\_\_\_\_ County RIO ARRIBA State NEW MEXICO  
Formation MESA VERDE Test Date SEPTEMBER 9, 1985

Status of Well Shut-in new completion

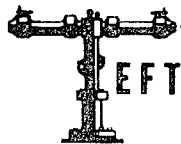
DEPTH Feet	PRESSURE Psig	GRADIENT Psi/Ft.
10	1046	
2000	1110	0.032
4000	1178	0.034
4600	1201	0.038
4800	1211	0.050
5000	1222	0.055

Datum Pressure \_\_\_\_\_ Psig



Elev.	Datum	Ft.
Total Depth	Perf.	Ft.
Tubing	in. to	Ft.
Casing	in. to	Ft.
Casing Press. 1045	Tubing Press. 1046	
Oil Level	Water Level	
Temperature 143	°F @	Ft.
Element No.	Range	
Last Test Date		
Pressure Last Test Date		Psig
B.H.P. Change	Psi	





**J. E. TELLER, INC.**

reservoir engineering data

MIDLAND, TEXAS

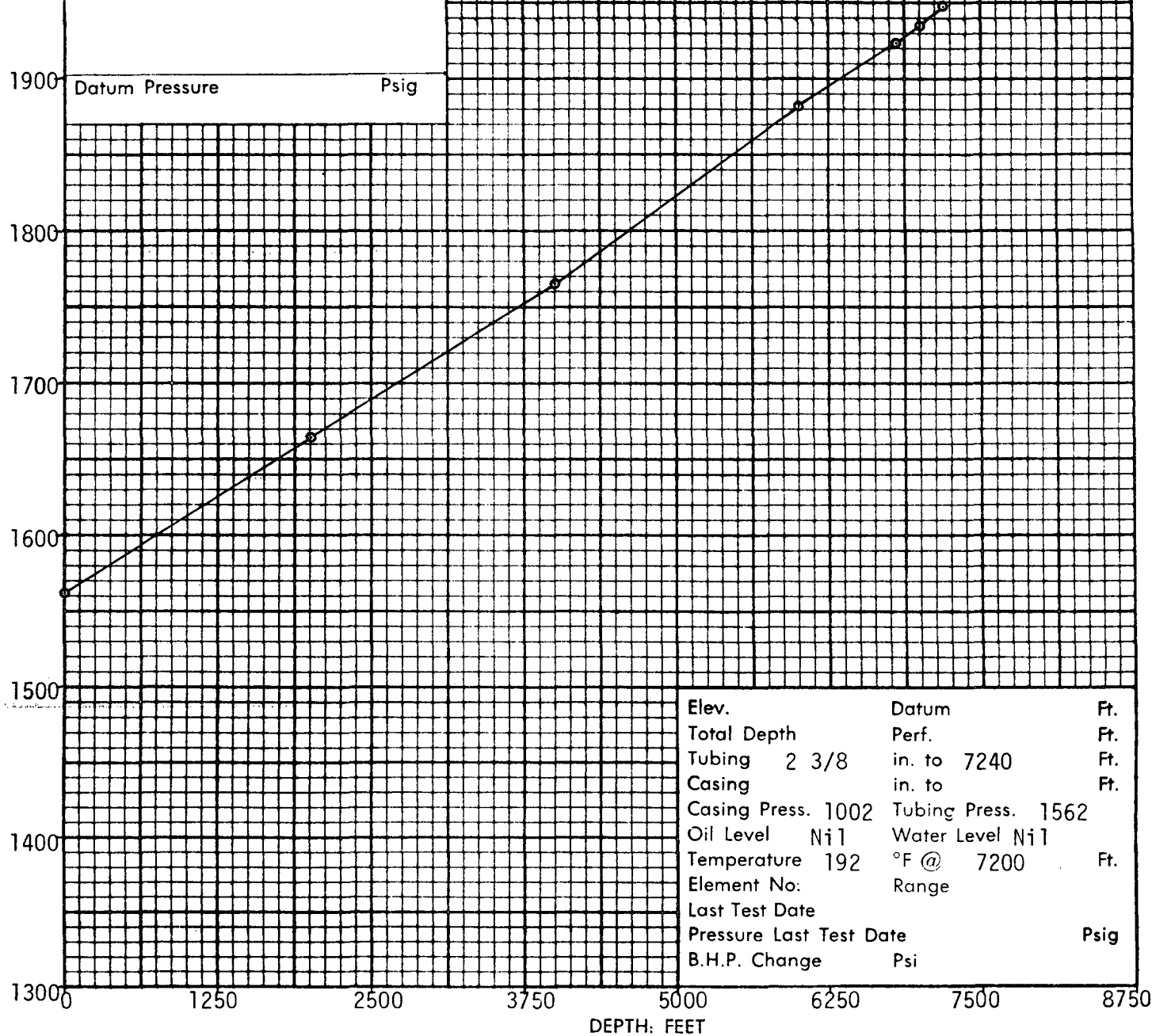
Page 2 of 2  
File 2-17326-WL&P

Company CAULKINS OIL COMPANY Lease BREECH "A" Well No. 625-E  
Field BASIN DAKOTA County RIO ARRIBA State NEW MEXICO  
Formation DAKOTA Test Date SEPTEMBER 9, 1985

Status of Well Shut-in new completion

DEPTH Feet	PRESSURE Psig	GRADIENT Psi/Ft.
10	1562	
2000	1665	0.054
4000	1766	0.051
6000	1882	0.058
6800	1923	0.051
7000	1936	0.065
7200	1948	0.060

Datum Pressure \_\_\_\_\_ Psig



Elev.	Datum	Ft.
Total Depth	Perf.	Ft.
Tubing 2 3/8	in. to 7240	Ft.
Casing	in. to	Ft.
Casing Press. 1002	Tubing Press. 1562	
Oil Level Nil	Water Level Nil	
Temperature 192	°F @ 7200	Ft.
Element No:	Range	
Last Test Date		
Pressure Last Test Date		Psig
B.H.P. Change	Psi	

UNITED STATES  
DEPARTMENT OF THE INTERIOR  
BUREAU OF LAND MANAGEMENT

SUBMIT IN DUPLICATE\*

(See other in-  
structions on  
reverse side)

Form approved.  
Budget Bureau No. 1004-0137  
Expires August 31, 1985

WELL COMPLETION OR RECOMPLETION REPORT AND LOG \*

1a. TYPE OF WELL: OIL WELL ☐ GAS WELL ☒ DRY ☐ Other \_\_\_\_\_

b. TYPE OF COMPLETION:

NEW WELL ☒ WORK OVER ☐ DEEP-EN ☐ PIPE BACK ☐ DIFF. REVR. ☐ Other \_\_\_\_\_

2. NAME OF OPERATOR

Caulkins Oil Company

3. ADDRESS OF OPERATOR

P.O. Box 780 Farmington, New Mexico 87499

4. LOCATION OF WELL (Report location clearly and in accordance with any State requirements)\*

At surface 1590' F/S and 1000' F/W

At top prod. interval reported below

Same

At total depth Same

14. PERMIT NO.

DATE ISSUED

5. LEASE DESIGNATION AND SERIAL NO.

SF 079035-A

6. IF INDIAN, ALLOTTEE OR TRIBE NAME

7. UNIT AGREEMENT NAME

8. FARM OR LEASE NAME

Breech "A"

9. WELL NO.

625-E

10. FIELD AND POOL, OR WILDCAT

Blanco Mesa Verde

11. SEC. T. R. N. OR BLOCK AND SURVEY OR AREA

Section 8, 26N 6W

12. COUNTY OR PARISH

13. STATE

Rio Arriba New Mexico

15. DATE SPUDDED

7-19-85

16. DATE T.D. REACHED

7-31-85

17. DATE COMPL. (Ready to prod.)

9-24 85

18. ELEVATIONS (OF, RKB, RT, GR, ETC.)\*

6496 GR

19. ELEV. CASINGHEAD

6496

20. TOTAL DEPTH, MD & TVD

7420'

21. PLUG, BACK T.D., MD & TVD

7328'

22. IF MULTIPLE COMPL., HOW MANY\*

(2) Commingled

23. INTERVALS DRILLED BY

→

ROTARY TOOLS

0-7420

CABLE TOOLS

No

24. PRODUCING INTERVAL(S), OF THIS COMPLETION—TOP, BOTTOM, NAME (MD AND TVD)\*

4516' to 5230' (Mesa Verde)

25. WAS DIRECTIONAL SURVEY MADE

No

26. TYPE ELECTRIC AND OTHER LOGS RUN

Dual Induction SFL - Formation Density - Depth Correlation Log

27. WAS WELL CORED

No

28. CASING RECORD (Report all strings set in well)

CASING SIZE	WEIGHT, LB./FT.	DEPTH SET (MD)	HOLE SIZE	CEMENTING RECORD	AMOUNT PULLED
9 5/8"	36# H-40	424'	12 1/4"	250 sacks (295 Cu.Ft.)	None
5 1/2"	15.5 & 17#	7328'	7 7/8"	1300 sacks (2004 Cu.Ft.)	None

29. LINER RECORD

SIZE	TOP (MD)	BOTTOM (MD)	SACKS CEMENT*	SCREEN (MD)	SIZE	DEPTH SET (MD)	PACKER SET (MD)
					1 1/2"	7271'	5370'

31. PERFORATION RECORD (Interval, size and number)

1-.42-4516 1-.42-5122 1-.42-5230  
1-.42-4992 1-.42-5134  
1-.42-5022 1-.42-5139  
1-.42-5084 1-.42-5154  
1-.42-5086 1-.42-5178

32. ACID, SHOT, FRACTURE, CEMENT SQUEEZE, ETC.

DEPTH INTERVAL (MD)	AMOUNT AND KIND OF MATERIAL USED
4516' to 5230'	23,000# 20-40 Sand and 1125 bbls. 20# Gel Fluid

33. PRODUCTION

DATE FIRST PRODUCTION		PRODUCTION METHOD (Flowing, gas lift, pumping—size and type of pump)				WELL STATUS (Producing or shut-in)	
10-1-85		Flowing				Shut-in	
DATE OF TEST	HOURS TESTED	CHOKE SIZE	PROD'N. FOR TEST PERIOD	OIL—BBL.	GAS—MCF.	WATER—BBL.	GAS-OIL RATIO
10-1-85	3 Hours	3/4"	→		305		
FLOW. TUBING PRESS.	CASING PRESSURE	CALCULATED 24-HOUR RATE	OIL—BBL.	GAS—MCF.	WATER—BBL.	OIL GRAVITY-API (CORR.)	
387	PKR	→		2,440			

34. DISPOSITION OF GAS (Sold, used for fuel, vented, etc.)

Gas to be sold to Gas Company of New Mexico (Condensate to Giant Refinery Co.)

35. LIST OF ATTACHMENTS

Complete cement records.

36. I hereby certify that the foregoing and attached information is complete and correct as determined from all available records

SIGNED

*Charles E. Dargatzis*

TITLE

Superintendent

DATE

OCT 07 1985

\*(See Instructions and Spaces for Additional Data on Reverse Side)

OIL CON. DIV.



Ran New 5 1/2" K-55 Smls 8rd thd Casing as follows:

7328' to 6298'	(1030')	New 5 1/2"	17#	LT&C	K-55 Smls Casing
6298' to 821'	(5477')	New 5 1/2"	15.5#	ST&C	K-55 Smls Casing
821' to Surface	( 821')	New 5 1/2"	17#	LT&C	K-55 Smls Casing

Stage Tools run in 5 1/2" Casing at 5327' and 3849'.

Cement Baskets run on 5 1/2" Casing at 5369' and 3891'.

24 Centralizers run on Casing string at following points:

7290', 7248', 7206', 7164', 7123', 7083', 7041', 7000', 6959', 6919', 6879', 6837', 5411', 5385', 5242', 5202', 5160', 5117', 5077', 5034', 4992', 4950', 3934' and 3807'.

Cemented 5 1/2" Casing in three (3) Stages.

First Stage thru Shoe at 7328' with 250 sacks (412.50 Cu.Ft.) Light Weigh 5 Plus 4% Gel and 12 1/4# Gilsonite per sack. Followed by 100 sacks (118 Cu.Ft.) Latex Cement.  
Plug down 1:00 PM 8-1-85.

Second Stage Cemented thru Stage Tool set at 5327' with 250 sacks (412.50 Cu.Ft.) Light Weigh 5 Plus 4% Gel and 12 1/4# Gilsonite per sack. Followed by 100 sacks (118 Cu.Ft.) Latex Cement.  
Plug down 2:15 PM 8-1-85.

Third Stage Cemented thru Stage Tool set at 3849' with 500 sacks (825 Cu.Ft.) Light Weigh 5 Plus 4% Gel and 12 1/4# Gilsonite per sack. Followed by 100 sacks (118 Cu.Ft.) Neat Cement.  
Plug down 3:45 PM 8-1-85.

Cement circulated on all three Stages.

Approx 7 bbls slurry on first Stage.  
Approx 5 bbls slurry on second Stage.  
Approx 9 bbls slurry on third Stage.

UNITED STATES  
DEPARTMENT OF THE INTERIOR  
BUREAU OF LAND MANAGEMENT

SUBMIT IN DUPLICATE\*

(See other in-  
structions on  
reverse side)

Form approved.  
Budget Bureau No. 1004-0137  
Expires August 31, 1985

5. LEASE DESIGNATION AND SERIAL NO.

SF 079035-A

6. IF INDIAN, ALLOTTEE OR TRIBE NAME

7. UNIT AGREEMENT NAME

8. FARM OR LEASE NAME

Breech "A"

9. WELL NO.

625-E

10. FIELD AND POOL, OR WILDCAT

Basin Dakota

11. SEC. T., R., M., OR BLOCK AND SURVEY  
OR AREA

Section 8, 26N 6W

12. COUNTY OR  
PARISH

Rio Arriba New Mexico

13. STATE

WELL COMPLETION OR RECOMPLETION REPORT AND LOG \*

1a. TYPE OF WELL: OIL WELL ☐ GAS WELL ☒ DRY ☐ Other

b. TYPE OF COMPLETION:

NEW WELL ☒ WORK OVER ☐ DEEP-EN ☐ PLUG BACK ☐ DIFF. GENVR. ☐ Other

2. NAME OF OPERATOR

Caulkins Oil Company

3. ADDRESS OF OPERATOR

P.O. Box 780 Farmington, New Mexico

4. LOCATION OF WELL (Report location clearly and in accordance with any State requirements)\*

At surface 1590' F/S and 1000' F/W

At top prod. interval reported below Same

At total depth Same

14. PERMIT NO.

DATE ISSUED

15. DATE SPUDDED

7-19-85

16. DATE T.D. REACHED

7-31-85

17. DATE COMPL. (Ready to prod.)

9-24-85

18. ELEVATIONS (DP, RKB, RT, GR, ETC.)\*

6496 GR

20. TOTAL DEPTH, MD & TVD

7420'

21. PLUG, BACK T.D., MD & TVD

7328'

22. IF MULTIPLE COMPL.,  
HOW MANY\*

(2) Commingled

23. INTERVALS  
DRILLED BY

0-7420

ROTARY TOOLS

CABLE TOOLS

No

24. PRODUCING INTERVAL(S). OF THIS COMPLETION—TOP, BOTTOM, NAME (MD AND TVD)\*

7120' to 7299' (Dakota)

26. TYPE ELECTRIC AND OTHER LOGS RUN

Dual Induction SFL - Formation Density - Depth Correlation Log

27. WAS WELL CORED

No

28. CASING RECORD (Report all strings set in well)

CASING SIZE	WEIGHT, LB./FT.	DEPTH SET (MD)	HOLE SIZE	CEMENTING RECORD	AMOUNT PULLED
9 5/8"	36# H-40	424'	7 7/8"	250 sacks (295 Cu.Ft.)	None
5 1/2"	15.5 & 17#	7328'	12 1/4"	1300 Sacks (2004 Cu.Ft.)	None

29. LINER RECORD

SIZE	TOP (MD)	BOTTOM (MD)	SACKS CEMENT*	SCREEN (MD)	SIZE	DEPTH SET (MD)	PACKER SET (MD)
					1 1/2"	7271'	5370'

31. PERFORATION RECORD (Interval, size and number)

1-.42-7120 1-.42-7230 1-.42-7299  
1-.42-7124 1-.42-7246  
1-.42-7214 1-.42-7202  
1-.42-7218 1-.42-7290  
1-.42-7220 1-.42-7294

32. ACID, SHOT, FRACTURE, CEMENT SQUEEZE, ETC.

DEPTH INTERVAL (MD) AMOUNT AND KIND OF MATERIAL USED  
7120' to 7299' 128,000# 20-40 Sand and  
2644 bbls. Cross Link Fluid

33. PRODUCTION

DATE FIRST PRODUCTION 10-1-85 PRODUCTION METHOD (Flowing, gas lift, pumping—size and type of pump) Flowing WELL STATUS (Producing or shut-in) Shut-in  
DATE OF TEST 10-1-85 HOURS TESTED 3 Hours CHOKER SIZE 3/4" PROD'N. FOR TEST PERIOD OIL—BSL. GAS—MCF. WATER—BSL. GAS-OIL RATIO 305  
FLOW. TUBING PRESS. 387 CASING PRESSURE PKR CALCULATED 24-HOUR RATE OIL—BSL. GAS—MCF. WATER—BSL. OIL GRAVITY-API (CORR.) 2,440

34. DISPOSITION OF GAS (Sold, used for fuel, vented, etc.)

TEST WITNESSED BY

Gas to be sold to Gas Company of New Mexico (Condensate to Giant Refinery Co)

35. LIST OF ATTACHMENTS

Complete Cement Records.

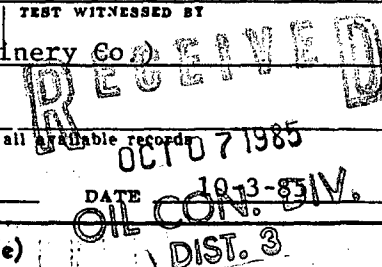
36. I hereby certify that the foregoing and attached information is complete and correct as determined from all available records.

SIGNED Charles E. Vesper TITLE Superintendent

DATE 10-13-85

\*(See Instructions and Spaces for Additional Data on Reverse Side)

Title 18 U.S.C. Section 1001, makes it a crime for any person knowingly and willfully to make to any department or agency of the United States any false, fictitious or fraudulent statements or representations as to any matter within its jurisdiction.



37. SUMMARY OF POROUS ZONES: (Show all important zones of porosity and contents thereof; cored intervals; and all drill-stem, tests, including depth interval tested, cushion used, time tool open, flowing and shut-in pressures, and recoveries):

38. GEOLOGIC MARKERS

FORMATION	TOP	BOTTOM	DESCRIPTION, CONTENTS, ETC.	NAME	TOP	
					MEAS. DEPTH	TRUE VERT. DEPTH
Alamo	2222	2308	Water Sand	Alamo	2222	2222
Pictured Cliffs	2806	2900	Gas Sand	Pictured Cliffs	2806	2806
Chacra	3716	3828	Gas Sand	Chacra	3716	3716
Mesa Verde	4512	5266	Gas Sand	Mesa Verde	4512	4512
Greenhorn	6993	7052	Gas Sand	Greenhorn	6993	6993
Dakota	7100	7316	Gas Sand	Dakota	7100	7100
Hole Deviation Test						
		Depth	Degrees			
		434	1/2			
		946	1/2			
		1479	1/2			
		2077	1			
		2581	1 1/4			
		3085	1 1/4			
		3579	1 1/2			
		4080	1 1/2			
		4400	1			
		4900	1			
		5412	1			
		5916	1 1/4			
		6419	1 1/4			
		6914	1			
		7012	3/4			
		7420	1			

Ran New 5 1/2" K-55 Smls 8rd thd Casing as follows:

7328' to 6298'	(1030')	New 5 1/2"	17#	LT&C	K-55 Smls Casing
6298' to 821'	(5477')	New 5 1/2"	15.5#	ST&C	K-55 Smls Casing
821' to Surface	( 821')	New 5 1/2"	17#	LT&C	K-55 Smls Casing

Stage Tools run in 5 1/2" Casing at 5327' and 3849'.

Cement Baskets run on 5 1/2" Casing at 5369' and 3891'.

24 Centralizers run on Casing string at following points:

7290', 7248', 7206', 7164', 7123', 7083', 7041', 7000', 6959', 6919', 6879', 6837', 5411', 5385', 5242', 5202', 5160', 5117', 5077', 5034', 4992', 4950', 3934' and 3807'.

Cemented 5 1/2" Casing in three (3) Stages.

First Stage thru Shoe at 7328' with 250 sacks (412.50 Cu.Ft.) Light Weigh 5 Plus 4% Gel and 12 1/4# Gilsonite per sack. Followed by 100 sacks (118 Cu.Ft.) Latex Cement.  
Plug down 1:00 PM 8-1-85.

Second Stage Cemented thru Stage Tool set at 5327' with 250 sacks (412.50 Cu.Ft.) Light Weigh 5 Plus 4% Gel and 12 1/4# Gilsonite per sack. Followed by 100 sacks (118 Cu.Ft.) Latex Cement.  
Plug down 2:15 PM 8-1-85.

Third Stage Cemented thru Stage Tool set at 3849' with 500 sacks (825 Cu.Ft.) Light Weigh 5 Plus 4% Gel and 12 1/4# Gilsonite per sack. Followed by 100 sacks (118 Cu.Ft.) Neat Cement.  
Plug down 3:45 PM 8-1-85.

Cement circulated on all three Stages.

Approx 7 bbls slurry on first Stage.

Approx 5 bbls slurry on second Stage.

Approx 9 bbls slurry on third Stage.

UNITED STATES  
DEPARTMENT OF THE INTERIOR  
BUREAU OF LAND MANAGEMENT

SUBMIT IN TRIPPLICATE\*  
(Other instructions on re-  
verse side)

Form approved.  
Budget Bureau No. 1004-0135  
Expires August 31, 1985

SUNDRY NOTICES AND REPORTS ON WELLS

(Do not use this form for proposals to drill or to deepen or plug back to a different reservoir.  
Use "APPLICATION FOR PERMIT—" for such proposals.)

OIL ☐ GAS ☒  
WELL WELL OTHER

2. NAME OF OPERATOR

Caulkins Oil Company

3. ADDRESS OF OPERATOR

P.O. Box 780 Farmington, New Mexico 87499

4. LOCATION OF WELL (Report location clearly and in accordance with any State requirements.\*  
See also space 17 below.)  
At surface

1590' F/S and 1000' F/W

14. PERMIT NO.

15. ELEVATIONS (Show whether DF, RT, GR, etc.)

6496 GR

5. LEASE DESIGNATION AND SERIAL NO.

SF 079035-A

6. IF INDIAN, ALLOTTEE OR TRIBE NAME

7. UNIT AGREEMENT NAME

8. FARM OR LEASE NAME

Breech "D"

9. WELL NO.

625-E

10. FIELD AND POOL, OR WILDCAT

Blanco MV - Basin Dakota

11. SEC., T., R., M., OR BLK. AND  
SURVEY OR AREA

Section 8, 26N 6W

12. COUNTY OR PARISH

13. STATE

Rio Arriba

New Mexico

16. Check Appropriate Box To Indicate Nature of Notice, Report, or Other Data

NOTICE OF INTENTION TO:

TEST WATER SHUT-OFF

FRACTURE TREAT

SHOOT OR ACIDIZE

REPAIR WELL

(Other) Commingle Well

PULL OR ALTER CASING

MULTIPLE COMPLETE

ABANDON\*

CHANGE PLANS

SUBSEQUENT REPORT OF:

WATER SHUT-OFF

FRACTURE TREATMENT

SHOOTING OR ACIDIZING

(Other)

REPAIRING WELL

ALTERING CASING

ABANDONMENT\*

(NOTE: Report results of multiple completion on Well  
Completion or Recompletion Report and Log form.)

17. DESCRIBE PROPOSED OR COMPLETED OPERATIONS (Clearly state all pertinent details, and give pertinent dates, including estimated date of starting any  
proposed work. If well is directionally drilled, give subsurface locations and measured and true vertical depths for all markers and zones perti-  
nent to this work.)\*

10-3-85

It is our intention to seek administration approval for  
downhole commingling of the Mesa Verde and Dakota Zones  
in this well from New Mexico Oil Conservation Division.

RECEIVED  
OCT 07 1985  
OIL CON. DIV  
DIST. 3

18. I hereby certify that the foregoing is true and correct

SIGNED

*Charles E. Vergara*

TITLE Superintendent

DATE

10-3-85

(This space for Federal or State office use)

APPROVED BY

TITLE

DATE

CONDITIONS OF APPROVAL, IF ANY:

\*See Instructions on Reverse Side



STATE OF NEW MEXICO  
ENERGY AND MINERALS DEPARTMENT

OIL CONSERVATION DIVISION  
AZTEC DISTRICT OFFICE

1000 RIO BRAZOS ROAD  
AZTEC, NEW MEXICO 87410  
(505) 334-6178

OIL CONSERVATION DIVISION  
BOX 2088  
SANTA FE, NEW MEXICO 87501

DATE October 11, 1985

RE: Proposed MC \_\_\_\_\_  
Proposed DHC α \_\_\_\_\_  
Proposed NSL \_\_\_\_\_  
Proposed SWD \_\_\_\_\_  
Proposed WFX \_\_\_\_\_  
Proposed PMX \_\_\_\_\_

Gentlemen:

I have examined the application dated October 7, 1985  
for the Carlin Oil Co. Block A 625E L-8-26N-6W  
Operator Lease and Well No. Unit, S-T-R

and my recommendations are as follows:

Approve  
\_\_\_\_\_  
\_\_\_\_\_  
\_\_\_\_\_  
\_\_\_\_\_  
\_\_\_\_\_

Yours truly,

Frank J. [Signature]