



**DCP Midstream**  
370 17<sup>th</sup> Street, Suite 2500  
Denver, CO 80202  
303-595-3331  
303-605-2226 FAX

RECEIVED OCD

2013 DEC 13 A 11:48

December 12, 2013

Mr. Leonard Lowe  
Environmental Engineer  
New Mexico Oil Conservation Division  
1220 S. St. Francis Dr.  
Santa Fe, NM 87505

**RE: 3rd Quarter 2013 Groundwater Monitoring Results  
DCP X-Line Pipeline Release (1RP-400-0)  
Unit B, Section 7, T15S, R34E (Lat 33° 02' 11", Long 103° 32' 48")**

Dear Mr. Lowe:

DCP Midstream, LP (DCP) is pleased to submit for your review, one copy of the 3rd Quarter 2013 Groundwater Monitoring Results for the DCP X-Line Pipeline Release located within the Etcheverry Ranch, Lea County, New Mexico.

This is the 6th consecutive quarter in which the BTEX concentrations in all groundwater monitor wells have been below New Mexico Water Quality Control Commissions Groundwater Standards.

If you have any questions regarding the report, please call at 303-605-1718 or e-mail me [swweathers@dcpmidstream.com](mailto:swweathers@dcpmidstream.com).

Sincerely

**DCP Midstream, LP**

Stephen Weathers, PG  
Principal Environmental Specialist

cc: Mrs. Etcheverry, Landowner - Certified Mail 91 7199 9991 7031 8175 9445  
Geoffrey Leking, OCD Hobbs District Office (Copy on CD)  
Environmental Files

# Third Quarter 2013 Groundwater Monitoring and Activities Summary Report

## X-Line Pipeline Release – Etcheverry Ranch Lea County, New Mexico

1RP-400-0

Prepared for:



370 17<sup>th</sup> St., Suite 2500  
Denver, CO 80202

*Prepared by:*



6899 Pecos Street, Unit C  
Denver, Colorado 80221

**November 19, 2013**

## Table of Contents

1. Introduction .....	1
2. Site Location and Background.....	1
3. Groundwater Monitoring.....	2
3.1 Groundwater Elevation Monitoring.....	2
3.2 Groundwater Quality Monitoring.....	2
3.3 Data Quality Assurance / Quality Control.....	3
4. Remediation System O&M Activities.....	3
5. Conclusions .....	3
6. Recommendations .....	3

### Tables

1	Third Quarter 2013 Summary of Groundwater Elevation Data
2	Third Quarter 2013 Summary of BTEX Concentrations in Groundwater

### Figures

1	Site Location
2	Site Map
3	Groundwater Elevation Contour Map – September 9, 2013
4	2013 Analytical Results Map – September 9, 2013

### Appendices

A	Laboratory Analytical Report
B	Historical Groundwater Analytical Results

## 1. Introduction

This report summarizes the results of groundwater monitoring activities conducted during the third quarter 2013, at the X-Line Pipeline Release (Site) on the Etcheverry Ranch in Lea County, New Mexico (Figure 1). Tasman Geosciences, LLC (Tasman) conducted these activities on behalf of DCP Midstream, LP (DCP). The purpose of the field activities described herein were to; a) measure groundwater levels; b) obtain groundwater samples for chemical analysis; c) evaluate and present groundwater flow and quality conditions; and d) assess the effectiveness of remedial activities conducted from 2003 through 2012. Current Site conditions were evaluated from field data and analytical laboratory results collected during the reporting period.

## 2. Site Location and Background

The Site is located in New Mexico Oil Conservation Division (OCD) designated Unit B, Section 7, Township 15 South, Range 34 East (Figure 1). The OCD reference for the Site is 1R-0400. The facility coordinates are 33.036389 degrees north and -103.546667 degrees west. The area is sparsely populated and land use is primarily associated with livestock grazing and oil and gas production and gathering.

Historical documents indicate that a pipeline release occurred at the Site during the latter part of 2001. Soil boring activities conducted by Environmental Plus Incorporated (EPI) estimated that the contaminated soil column was approximately 40-feet in diameter at the surface, tapering to approximately 20-feet in diameter at 37-feet below ground surface (bgs) and extending at that diameter to the top of water table at approximately 75-feet bgs. EPI conducted soil excavation activities between January and March of 2002 which included the removal and disposal of approximately 6,746 cubic yards (yd<sup>3</sup>) of impacted material to a depth of 37 feet bgs. The material was then disposed of at the OCD approved and permitted Artesia Aeration Landfarm in Maljamar, New Mexico. Subsequent to excavation activities, the open pit was backfilled and compacted with overburden and unaffected materials. It was estimated that approximately 560 yd<sup>3</sup> of impacted material remained in place.

Seven groundwater monitoring wells (MW-1 through MW-7) were installed at the Site, the well locations are illustrated in Figure 2. Additionally, one light non-aqueous phase liquid (LNAPL) recovery well was installed and used to extract LNAPL from the groundwater table. The well was re-drilled and used as a groundwater monitoring well (MW-8) following termination of LNAPL recovery conducted between July 2003 and 2004.

The Site remediation components include a soil vapor extraction (SVE) and air sparge (AS) remediation system (System). Installation activities were completed by EPI and the system became fully functional by mid-June of 2003. The system was operation until the second quarter of 2012 at which time the system was shut off due to negligible contaminant concentrations.

### 3. Groundwater Monitoring

This section describes the field groundwater monitoring activities as well as the laboratory analyses performed during the third quarter 2013 monitoring event. Monitoring activities including Site-wide groundwater gauging and sampling were performed on September 9, 2013. Figure 2 illustrates the groundwater monitoring network utilized to perform these activities at the Site.

#### 3.1 Groundwater Elevation Monitoring

Groundwater levels were measured in order to evaluate hydraulic characteristics and provide information regarding seasonal fluctuations in groundwater at the Site. In addition, wells were measured for total depth and groundwater purge volumes calculated. During the third quarter 2013 monitoring event groundwater levels were measured at all eight of the monitoring well locations.

Groundwater levels were measured on the north side of the well casing to the nearest 0.01-foot using an oil-water interface probe (IP) and were then converted to elevations (feet above mean sea level [AMSL]).

Groundwater elevations collected during the reporting period are presented in Table 1, and a third quarter 2013 groundwater elevation contour map is illustrated in Figure 3. Groundwater elevations ranged from 4,088.66 feet AMSL at monitoring well MW-3 to -4,089.32 feet AMSL in monitoring well MW-1. Since surveyed top of casing (TOC) elevations are not available for monitoring wells MW-7 and MW-8, groundwater elevations could not be calculated. As illustrated in Figure 3, groundwater flow at the Site generally trends to the southeast with a gradient of approximately 0.003 foot per foot between monitoring wells MW-1 and MW-3.

#### 3.2 Groundwater Quality Monitoring

Subsequent to the collection of groundwater level measurements, groundwater samples were collected from all eight wells. A minimum of three well casing volumes of groundwater were purged using polyethylene bailers prior to collecting groundwater samples. Groundwater samples were collected using dedicated polyethylene bailers, placed in clean laboratory supplied containers and packed in an ice-filled cooler and maintained at or below four degrees Celsius (<sup>o</sup>C) for transportation. Groundwater samples were then shipped under chain-of-custody procedures to Accutest Laboratories (Accutest) in Wheat Ridge, Colorado, for analysis.

Water quality samples were submitted to Accutest for benzene, toluene, ethylbenzene, and total xylenes (BTEX) analyses by United States Environmental Protection Agency (USEPA) Method 8260B.

Table 2 summarizes BTEX concentrations in groundwater samples collected during the reporting period in addition to concentrations from the previous 4 quarters. Laboratory analytical reports for the event are included in Appendix A and analytical results are summarized in Figure 4. Historical analytical results

up to and including the September 2013 event are included in Appendix B. During the third quarter 2013 monitoring event, BTEX concentrations did not exceed the New Mexico Water Quality Control Commission (NMWQCC) groundwater standards in any of the eight monitoring wells.

### 3.3 Data Quality Assurance / Quality Control

The data were reviewed for compliance with the analytical method and the associated quality assurance/quality control (QA/QC) procedures. All samples were analyzed using the correct analytical methods and within the correct holding times. Chain of custody forms were in order and properly executed and indicate that samples were received at the proper temperature with no headspace. All data were reported using the correct method number and reporting units. A trip blank, matrix spike or matrix spike duplicate (MS/MSD) and a field duplicate sample from well MW-8 were collected during the sampling event. The trip blank was fully in control, having no detections of the target analytes.

The duplicate sample collected from MW-8 was in compliance with QA/QC standards, both samples returning results for benzene below the NMWQCC regulatory standards of 0.01 mg/l.

The overall QA/QC assessment of the data, based on the data review, indicate that both field precision and overall data precision and accuracy are acceptable.

## 4. Remediation System O&M Activities

The air sparge and soil vapor extraction systems were turned off during the second quarter 2012 to monitor dissolved phase concentration trends within the targeted remediation area. It remained off throughout the reporting period.

## 5. Conclusions

During the third quarter 2013, BTEX concentrations remained below NMWQCC groundwater standards at all eight sample locations for the sixth consecutive monitoring period. As demonstrated by the 2012 and 2013 analytical results, remedial activities were successful in mitigating residual dissolved phase hydrocarbon impacts.

Analytical results were reported above laboratory detection limits for ethylbenzene and total xylenes in monitoring well MW-2 and benzene in MW-8.

## 6. Recommendations

Based on evaluation of data obtained during this reporting period, historical Site observations, and the remediation system operational parameters, it is recommended that an additional two quarters of groundwater sampling be completed to demonstrate that the residual dissolved phase petroleum hydrocarbon plume has been successfully mitigated.

## Tables

**TABLE 1**  
**THIRD QUARTER 2013**  
**SUMMARY OF GROUNDWATER ELEVATION DATA**  
**X-LINE PIPELINE RELEASE - ETCHEVERRY RANCH**  
**LEA COUNTY, NEW MEXICO**

Location	Date	Depth to Groundwater (1) (feet)	Total Depth (2) (feet)	TOC Elevation (3) (feet amsl)	Groundwater Elevation (feet amsl)	Change in Groundwater Elevation Since Previous Event (4) (feet)
MW-1	9/10/2012	77.46	91.00	4166.82	4089.36	0.02
MW-1	12/7/2012	77.42	91.00	4166.82	4089.40	0.04
MW-1	2/20/2013	77.42	91.00	4166.82	4089.40	0.00
MW-1	6/2/2013	77.45	91.00	4166.82	4089.37	-0.03
MW-1	9/9/2013	77.50	91.00	4166.82	4089.32	-0.05
MW-2	9/10/2012	77.44	88.00	4166.66	4089.22	0.03
MW-2	12/7/2012	77.40	88.00	4166.66	4089.26	0.04
MW-2	2/20/2013	77.40	88.00	4166.66	4089.26	0.00
MW-2	6/2/2013	77.45	88.00	4166.66	4089.21	-0.05
MW-2	9/9/2013	77.50	88.00	4166.66	4089.16	-0.05
MW-3	9/10/2012	77.48	91.00	4166.17	4088.69	0.03
MW-3	12/7/2012	77.43	91.00	4166.17	4088.74	0.05
MW-3	2/20/2013	77.44	91.00	4166.17	4088.73	-0.01
MW-3	6/2/2013	77.47	91.00	4166.17	4088.70	-0.03
MW-3	9/9/2013	77.51	91.00	4166.17	4088.66	-0.04
MW-4	9/10/2012	77.60	91.00	4166.40	4088.80	0.02
MW-4	12/7/2012	77.55	91.00	4166.40	4088.85	0.05
MW-4	2/20/2013	77.56	91.00	4166.40	4088.84	-0.01
MW-4	6/2/2013	77.60	91.00	4166.40	4088.80	-0.04
MW-4	9/9/2013	77.65	91.00	4166.40	4088.75	-0.05
MW-5	9/10/2012	77.26	89.00	4165.90	4088.64	0.04
MW-5	12/7/2012	77.21	89.00	4165.90	4088.69	0.05
MW-5	2/20/2013	77.24	89.00	4165.90	4088.66	-0.03
MW-5	6/2/2013	77.26	89.00	4165.90	4088.64	-0.02
MW-5	9/9/2013	77.31	89.00	4165.90	4088.59	-0.05
MW-6	9/10/2012	77.18	90.00	4165.94	4088.76	0.02
MW-6	12/7/2012	77.13	90.00	4165.94	4088.81	0.05
MW-6	2/20/2013	77.15	90.00	4165.94	4088.79	-0.02
MW-6	6/2/2013	77.20	90.00	4165.94	4088.74	-0.05
MW-6	9/9/2013	77.24	90.00	4165.94	4088.70	-0.04
MW-7	9/10/2012	76.75	85.00	NM	NM	NM
MW-7	12/7/2012	76.70	85.00	NM	NM	NM
MW-7	2/20/2013	76.71	85.00	NM	NM	NM
MW-7	6/2/2013	76.75	85.00	NM	NM	NM
MW-7	9/9/2013	76.74	85.00	NM	NM	NM



**TABLE 1**  
**THIRD QUARTER 2013**  
**SUMMARY OF GROUNDWATER ELEVATION DATA**  
**X-LINE PIPELINE RELEASE - ETCHEVERRY RANCH**  
**LEA COUNTY, NEW MEXICO**

Location	Date	Depth to Groundwater (1) (feet)	Total Depth (2) (feet)	TOC Elevation (3) (feet amsl)	Groundwater Elevation (feet amsl)	Change in Groundwater Elevation Since Previous Event (4) (feet)
MW-8	9/10/2012	77.42	81.35	NM	NM	NM
MW-8	12/7/2012	77.36	81.35	NM	NM	NM
MW-8	2/20/2013	77.36	81.35	NM	NM	NM
MW-8	6/2/2013	77.40	81.35	NM	NM	NM
MW-8	9/9/2013	77.44	81.35	NM	NM	NM
Average change in groundwater elevation since the previous monitoring event						-0.05

Notes:

1- Depths measured from the north edge of the well casing.

2- Total depths were collected and recorded during the third quarter 2013 monitoring event.

3-TOC elevations for monitoring wells MW-7, & MW-8 were not available at the time this report was generated. Therefore, groundwater elevations for those wells could not be calculated.

4- Changes in groundwater elevation were calculated by subtracting the measurement collected during the previous monitoring even from the measurement collected during the most recent monitoring event.

Data presented for the well locations includes previous four sampling events, when available. Historic groundwater elevation data for these locations may be found in Appendix B.

Sample locations are shown on Figure 2 and a groundwater elevation contour map is shown on Figure 3.

amsl - feet above mean sea level.

TOC - top of casing

NM - not measured

**TABLE 2**  
**THIRD QUARTER 2013**  
**SUMMARY OF BTEX CONCENTRATIONS IN GROUNDWATER**  
**X-LINE PIPELINE RELEASE - ETCHEVERRY RANCH**  
**LEA COUNTY, NEW MEXICO**

Location Identification	Sample Date	Benzene (mg/l)	Toluene (mg/l)	Ethylbenzene (mg/l)	Total Xylenes (mg/l)	Comments
<b>New Mexico Water Quality Control Commission Groundwater Standards (mg/L)</b>		<b>0.01</b>	<b>0.75</b>	<b>0.75</b>	<b>0.62</b>	
MW-1	9/10/2012	<0.001	<0.002	<0.002	<0.003	
MW-1	12/7/2012	<0.001	<0.002	<0.002	<0.003	
MW-1	2/20/2013	<0.001	<0.002	<0.002	<0.003	
MW-1	6/2/2013	<0.001	<0.002	<0.002	<0.003	
MW-1	9/9/2013	<0.001	<0.002	<0.002	<0.003	
MW-2	9/10/2012	<0.001	<0.002	0.0089	0.0721	
MW-2	12/7/2012	<0.001	<0.002	0.0079	0.0665	
MW-2	2/20/2013	<0.001	<0.002	0.0045	0.0364	
MW-2	6/2/2013	<0.001	<0.002	0.0108	0.0856	
MW-2	9/9/2013	<0.001	<0.002	0.0036	0.0213	
MW-3	9/10/2012	<0.001	<0.002	<0.002	<0.003	
MW-3	12/7/2012	<0.001	<0.002	<0.002	<0.003	
MW-3	2/20/2013	<0.001	<0.002	<0.002	<0.003	
MW-3	6/2/2013	<0.001	<0.002	<0.002	<0.003	
MW-3	9/9/2013	<0.001	<0.002	<0.002	<0.003	
MW-4	9/10/2012	<0.001	<0.002	<0.002	<0.003	
MW-4	12/7/2012	<0.001	<0.002	<0.002	<0.003	
MW-4	2/20/2013	<0.001	<0.002	<0.002	<0.003	
MW-4	6/2/2013	<0.001	<0.002	<0.002	<0.003	
MW-4	9/9/2013	<0.001	<0.002	<0.002	<0.003	
MW-5	9/10/2012	<0.001	<0.002	<0.002	<0.003	
MW-5	12/7/2012	<0.001	<0.002	<0.002	<0.003	
MW-5	2/20/2013	<0.001	<0.002	<0.002	<0.003	
MW-5	6/2/2013	<0.001	<0.002	<0.002	<0.003	
MW-5	9/9/2013	<0.001	<0.002	<0.002	<0.003	
MW-6	9/10/2012	<0.001	<0.002	<0.002	<0.003	
MW-6	12/7/2012	<0.001	<0.002	<0.002	<0.003	
MW-6	2/20/2013	<0.001	<0.002	<0.002	<0.003	
MW-6	6/2/2013	<0.001	<0.002	<0.002	<0.003	
MW-6	9/9/2013	<0.001	<0.002	<0.002	<0.003	
MW-7	9/10/2012	<0.001	<0.002	<0.002	<0.003	
MW-7	12/7/2012	<0.001	<0.002	<0.002	<0.003	
MW-7	2/20/2013	<0.001	<0.002	<0.002	<0.003	
MW-7	6/2/2013	<0.001	<0.002	<0.002	<0.003	
MW-7	9/9/2013	<0.001	<0.002	<0.002	<0.003	
MW-8	9/10/2012	0.00086	<0.002	0.00066	0.002	Duplicate Sample Collected
MW-8	12/7/2012	0.00063	<0.002	0.00086	<0.003	Duplicate Sample Collected
MW-8	2/20/2013	0.00045	<0.002	0.0019	0.0022	Duplicate Sample Collected
MW-8	6/2/2013	0.00043	<0.002	0.00098	0.0037	Duplicate Sample Collected
MW-8	9/9/2013	0.00044	<0.002	<0.002	<0.003	Duplicate Sample Collected

Notes:

The environmental cleanup standards for water that are applicable to this Site are the New Mexico Water Quality Control Commission (NMWQCC) Groundwater Standards.

Data presented for the well locations includes previous four sampling events, when available. Historic groundwater analytical results for these locations may be found in Appendix B.

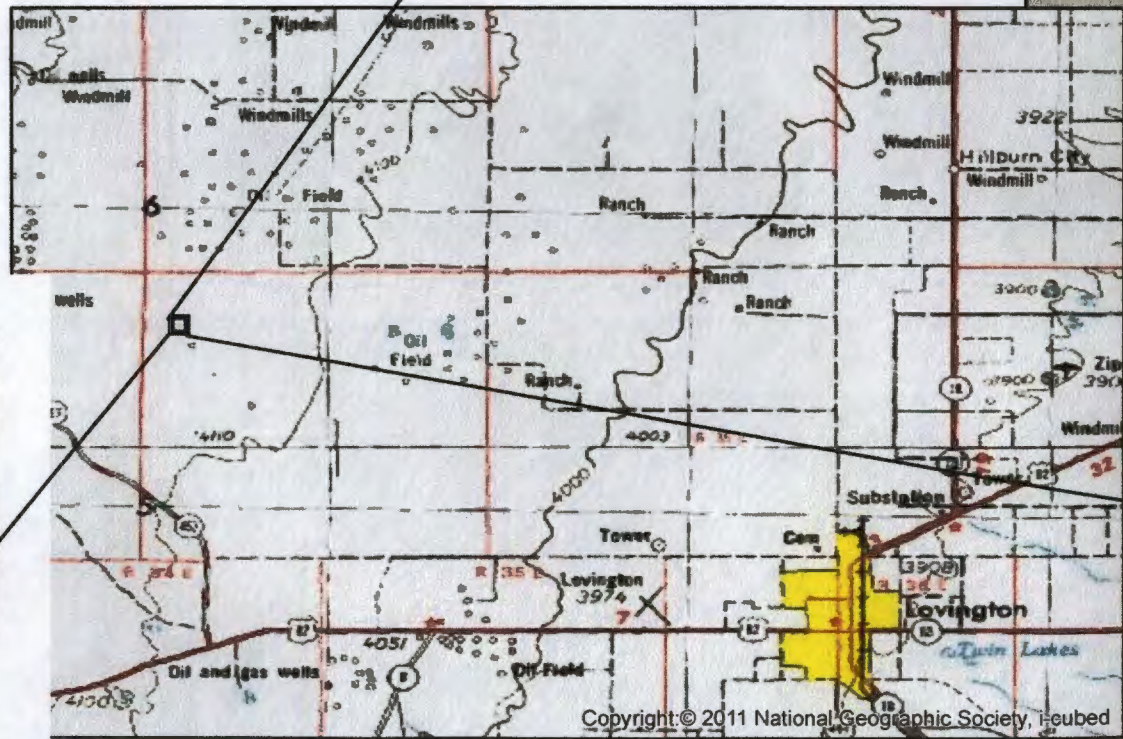
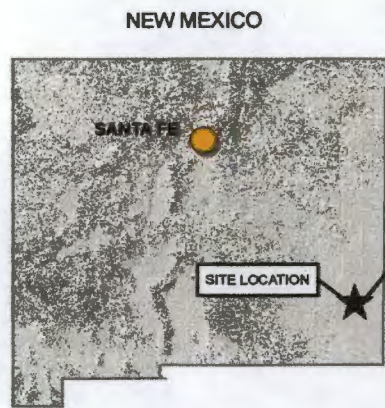
**Bold** red values indicate an exceedance of the NMWQCC groundwater standards for the Site.

Sample locations are shown on Figure 2 and analytical results are illustrated on Figure 4.

mg/L = milligrams per liter.

Monitoring well MW-8 was converted to an Air Sparge Injection point prior to the fourth quarter 2011.

## Figures



DESIGNED BY: C. Wasko  
 DRAWN BY: J. Clonts  
 SHEET CHK'D BY: \_\_\_\_\_  
 CROSS CHK'D BY: \_\_\_\_\_  
 APPROVED BY: \_\_\_\_\_  
 APPROVED BY: \_\_\_\_\_

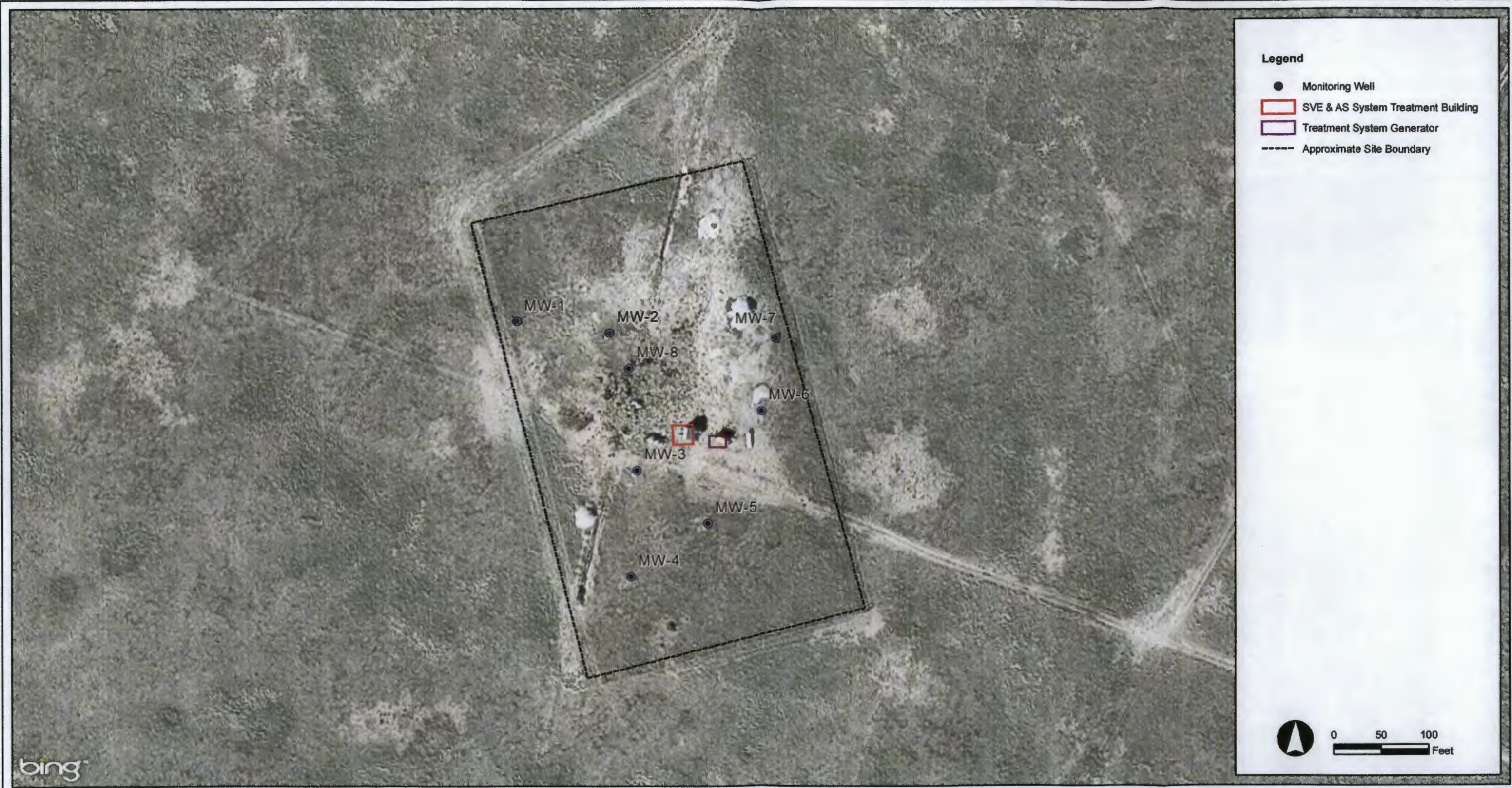


Tasman Geosciences, LLC  
 6899 Pecos Street - Unit C  
 Denver, CO 80221  
 303 487 1228


**X-LINE PIPELINE RELEASE**

**SITE LOCATION**

**FIGURE  
1**



DESIGNED BY: C. Wasko  
 DRAWN BY: J. Clonts  
 SHEET CHK'D BY: \_\_\_\_\_  
 CROSS CHK'D BY: \_\_\_\_\_  
 APPROVED BY: \_\_\_\_\_  
 APPROVED BY: \_\_\_\_\_

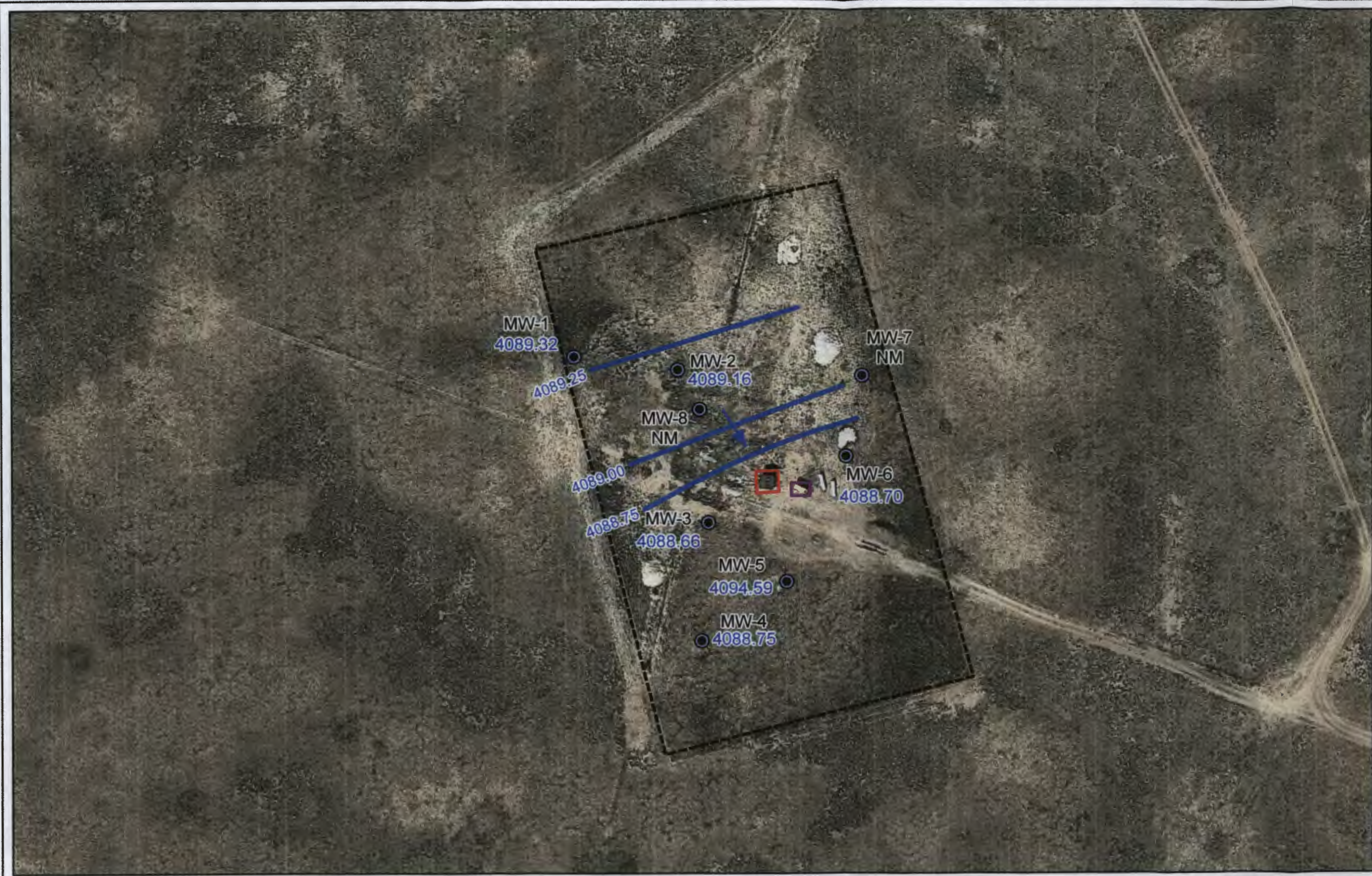


**TASMAN  
 GEOSCIENCES**  
 Tasman Geosciences, LLC  
 6899 Pecos Street - Unit C  
 Denver, CO 80221  
 303 487 1228


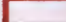





## X-LINE PIPELINE RELEASE

## SITE MAP

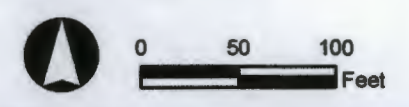
## FIGURE 2



**Legend**

-  Monitoring Well
-  SVE & AS System Treatment Building
-  Treatment System Generator
-  Approximate Site Boundary
-  Groundwater Elevation Contour Line (feet AMSL), Dashed Where Inferred
-  3,710.33 Measured Groundwater Elevation (feet AMSL)
-  Groundwater Flow Direction

Notes:  
 NM - Top of casing elevations not surveyed.  
 Therefore, groundwater elevations could not be calculated.



DESIGNED BY: J. Barker  
 DRAWN BY: D. Arnold  
 SHEET CHK'D BY: \_\_\_\_\_  
 CROSS CHK'D BY: \_\_\_\_\_  
 APPROVED BY: \_\_\_\_\_  
 APPROVED BY: \_\_\_\_\_

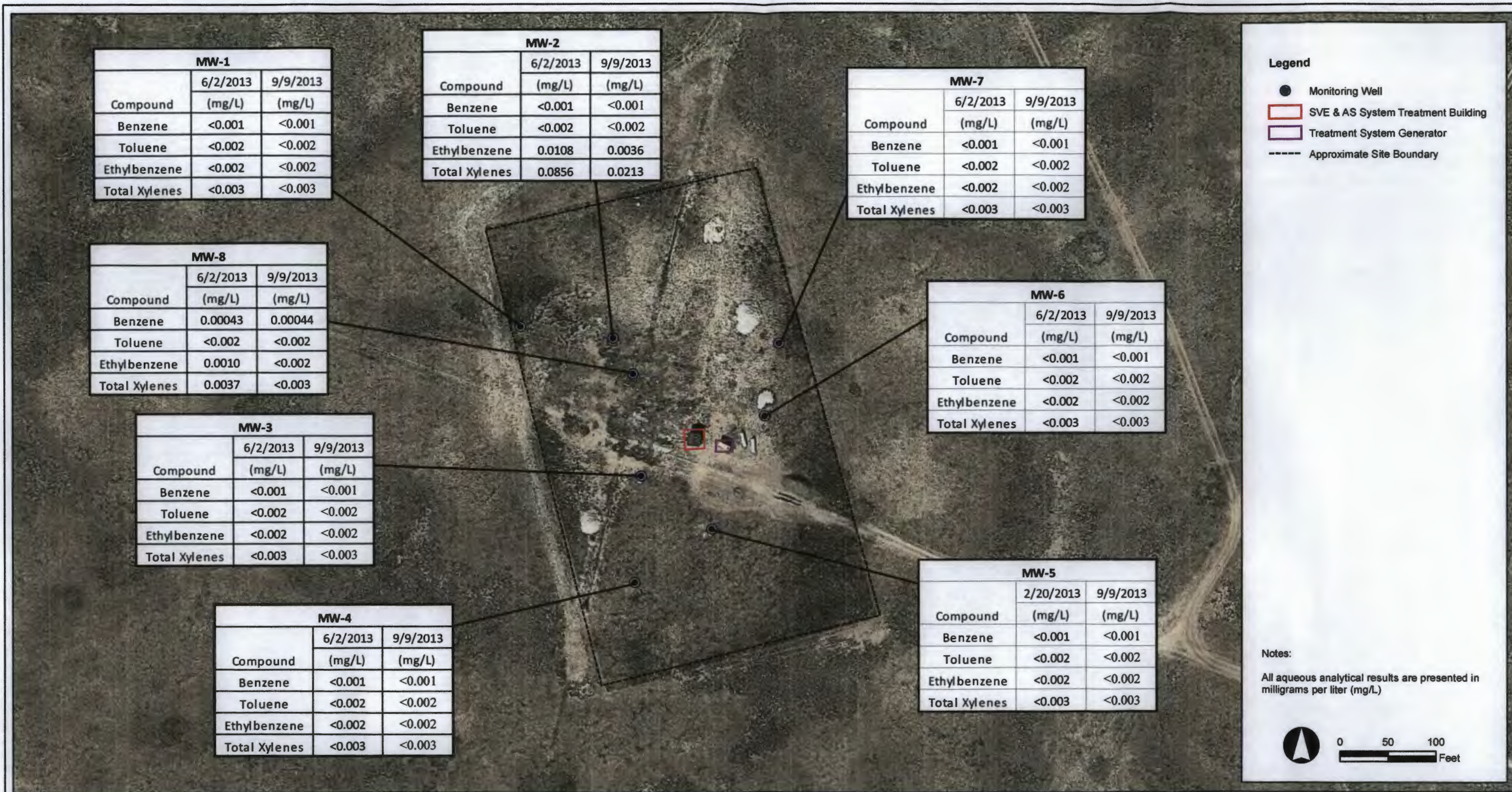


**TASMAN**  
 GEOSCIENCES  
 Tasman Geosciences, LLC  
 6899 Pecos Street - Unit C  
 Denver, CO 80221  
 303 487 1228

**X-LINE PIPELINE RELEASE**  
*Third Quarter 2013  
 Groundwater Monitoring  
 Summary Report*

**GROUNDWATER ELEVATION  
 CONTOUR MAP  
 (SEPTEMBER 9, 2013)**

**FIGURE  
 3**



DESIGNED BY: J. Barker

DRAWN BY: D. Arnold

SHEET CHK'D BY: \_\_\_\_\_

CROSS CHK'D BY: \_\_\_\_\_

APPROVED BY: \_\_\_\_\_

APPROVED BY: \_\_\_\_\_



Tasman Geosciences, LLC  
6899 Pecos Street - Unit C  
Denver, CO 80221  
303 487 1228

## X-LINE PIPELINE RELEASE

Third Quarter 2013  
Groundwater Monitoring  
Summary Report

ANALYTICAL RESULTS MAP  
(SEPTEMBER 9, 2013)

FIGURE  
4

## Appendix A

### Laboratory Analytical Report



**Technical Report for**

**DCP Midstream, LP**

**TASMCOA:DCP XLINE Etcheverry Ranch**

**RC-GN00-Project-400228028**

**Accutest Job Number: D50381**

**Sampling Date: 09/09/13**

**Report to:**

**Tasman Geosciencec LLC  
6899 Pecos Street Unit C  
Denver, CO 80221  
swweathers@dcpmidstream.com; cwasko@tasman-geo.com  
ATTN: Chirstine Wasko**

**Total number of pages in report: 31**



Test results contained within this data package meet the requirements of the National Environmental Laboratory Accreditation Conference and/or state specific certification programs as applicable.



**Scott Heideman**  
**Laboratory Director**

**Client Service contact: Shea Greiner 303-425-6021**

Certifications: CO (CO00049), ID, NE (CO00049), ND (R-027), NJ (CO 0007), OK (D9942), UT (NELAP CO00049), TX (T104704511)

This report shall not be reproduced, except in its entirety, without the written approval of Accutest Laboratories. Test results relate only to samples analyzed.

# Table of Contents

-1-

<b>Section 1: Sample Summary .....</b>	<b>3</b>
<b>Section 2: Case Narrative/Conformance Summary .....</b>	<b>4</b>
<b>Section 3: Summary of Hits .....</b>	<b>5</b>
<b>Section 4: Sample Results .....</b>	<b>6</b>
<b>4.1: D50381-1: MW-1 .....</b>	7
<b>4.2: D50381-2: MW-2 .....</b>	8
<b>4.3: D50381-3: MW-3 .....</b>	9
<b>4.4: D50381-4: MW-4 .....</b>	10
<b>4.5: D50381-5: MW-5 .....</b>	11
<b>4.6: D50381-6: MW-6 .....</b>	12
<b>4.7: D50381-7: MW-7 .....</b>	13
<b>4.8: D50381-8: MW-8 .....</b>	14
<b>4.9: D50381-9: DUP .....</b>	15
<b>4.10: D50381-10: TRIP BLANK .....</b>	16
<b>Section 5: Misc. Forms .....</b>	<b>17</b>
<b>5.1: Chain of Custody .....</b>	18
<b>Section 6: GC/MS Volatiles - QC Data Summaries .....</b>	<b>20</b>
<b>6.1: Method Blank Summary .....</b>	21
<b>6.2: Blank Spike Summary .....</b>	24
<b>6.3: Matrix Spike Summary .....</b>	27
<b>6.4: Matrix Spike/Matrix Spike Duplicate Summary .....</b>	29
<b>6.5: Duplicate Summary .....</b>	30

1

2

3

4

5

6



## Sample Summary

DCP Midstream, LP

**Job No:** D50381

TASMCOA:DCP XLINE Etcheverry Ranch  
 Project No: RC-GN00-Project-400228028

Sample Number	Collected		Received	Matrix		Client Sample ID
	Date	Time By		Code	Type	
D50381-1	09/09/13	15:40 CW	09/11/13	AQ	Ground Water	MW-1
D50381-2	09/09/13	15:30 CW	09/11/13	AQ	Ground Water	MW-2
D50381-3	09/09/13	14:45 CW	09/11/13	AQ	Ground Water	MW-3
D50381-4	09/09/13	14:35 CW	09/11/13	AQ	Ground Water	MW-4
D50381-5	09/09/13	14:25 CW	09/11/13	AQ	Ground Water	MW-5
D50381-5D	09/09/13	14:25 CW	09/11/13	AQ	Water Dup/MSD	MW-5
D50381-5M	09/09/13	14:25 CW	09/11/13	AQ	Water Matrix Spike	MW-5
D50381-6	09/09/13	15:00 CW	09/11/13	AQ	Ground Water	MW-6
D50381-7	09/09/13	15:15 CW	09/11/13	AQ	Ground Water	MW-7
D50381-8	09/09/13	15:50 CW	09/11/13	AQ	Ground Water	MW-8
D50381-9	09/09/13	00:00 CW	09/11/13	AQ	Ground Water	DUP
D50381-10	09/09/13	16:00 CW	09/11/13	AQ	Trip Blank Water	TRIP BLANK



## CASE NARRATIVE / CONFORMANCE SUMMARY

**Client:** DCP Midstream, LP

**Job No** D50381

**Site:** TASMCOA:DCP XLINE Etcheverry Ranch

**Report Date** 9/18/2013 9:58:59 AM

On 09/11/2013, 9 sample(s), 1 Trip Blank(s), and 0 Field Blank(s) were received at Accutest Mountain States (AMS) at a temperature of 2.9 °C. The samples were intact and properly preserved, unless noted below. An AMS Job Number of D50381 was assigned to the project. The lab sample ID, client sample ID, and date of sample collection are detailed in the report's Results Summary.

Specified quality control criteria were achieved for this job except as noted below. For more information, please refer to the analytical results and QC summary pages.

### Volatiles by GCMS By Method SW846 8260B

**Matrix** AQ **Batch ID:** V6V1156

- All samples were analyzed within the recommended method holding time.
- All method blanks for this batch meet method specific criteria.
- Sample(s) D50380-8MS, D50380-8MSD were used as the QC samples indicated.

**Matrix** AQ **Batch ID:** V7V1245

- All samples were analyzed within the recommended method holding time.
- All method blanks for this batch meet method specific criteria.
- Sample(s) D50265-25MS, D50265-30DUP were used as the QC samples indicated.

**Matrix** AQ **Batch ID:** V7V1246

- All samples were analyzed within the recommended method holding time.
- All method blanks for this batch meet method specific criteria.
- Sample(s) D50265-20DUP, D50381-5MS were used as the QC samples indicated.

AMS certifies that data reported for samples received, listed on the associated custody chain or analytical task order, were produced to specifications meeting AMS's Quality System precision, accuracy and completeness objectives except as noted.

Estimated non-standard method measurement uncertainty data is available on request, based on quality control bias and implicit for standard methods. Acceptable uncertainty requires tested parameter quality control data to meet method criteria.

AMS is not responsible for data quality assumptions if partial reports are used and recommends that this report be used in its entirety. This report is authorized by AMS indicated via signature on the report cover.

## Summary of Hits

**Job Number:** D50381  
**Account:** DCP Midstream, LP  
**Project:** TASMCOA:DCP XLINE Etcheverry Ranch  
**Collected:** 09/09/13



Lab Sample ID	Client Sample ID	Result/ Qual	RL	MDL	Units	Method
---------------	------------------	-----------------	----	-----	-------	--------

**D50381-1 MW-1**

No hits reported in this sample.

**D50381-2 MW-2**

Ethylbenzene	0.0036	0.0020	0.00025	mg/l	SW846 8260B
Xylene (total)	0.0213	0.0030	0.0020	mg/l	SW846 8260B

**D50381-3 MW-3**

No hits reported in this sample.

**D50381-4 MW-4**

No hits reported in this sample.

**D50381-5 MW-5**

No hits reported in this sample.

**D50381-6 MW-6**

No hits reported in this sample.

**D50381-7 MW-7**

No hits reported in this sample.

**D50381-8 MW-8**

Benzene	0.00037 J	0.0010	0.00025	mg/l	SW846 8260B
---------	-----------	--------	---------	------	-------------

**D50381-9 DUP**

Benzene	0.00044 J	0.0010	0.00025	mg/l	SW846 8260B
---------	-----------	--------	---------	------	-------------

**D50381-10 TRIP BLANK**

No hits reported in this sample.

Sample Results

---

Report of Analysis

---

## Report of Analysis

<b>Client Sample ID:</b> MW-1	
<b>Lab Sample ID:</b> D50381-1	<b>Date Sampled:</b> 09/09/13
<b>Matrix:</b> AQ - Ground Water	<b>Date Received:</b> 09/11/13
<b>Method:</b> SW846 8260B	<b>Percent Solids:</b> n/a
<b>Project:</b> TASMCOA:DCP XLINE Etcheverry Ranch	

	File ID	DF	Analyzed	By	Prep Date	Prep Batch	Analytical Batch
Run #1	6V20856.D	1	09/13/13	BR	n/a	n/a	V6V1156
Run #2							

	Purge Volume
Run #1	5.0 ml
Run #2	

**Purgeable Aromatics**

CAS No.	Compound	Result	RL	MDL	Units	Q
71-43-2	Benzene	ND	0.0010	0.00025	mg/l	
108-88-3	Toluene	ND	0.0020	0.0010	mg/l	
100-41-4	Ethylbenzene	ND	0.0020	0.00025	mg/l	
1330-20-7	Xylene (total)	ND	0.0030	0.0020	mg/l	

CAS No.	Surrogate Recoveries	Run# 1	Run# 2	Limits
17060-07-0	1,2-Dichloroethane-D4	108%		62-130%
2037-26-5	Toluene-D8	107%		70-130%
460-00-4	4-Bromofluorobenzene	83%		69-130%

ND = Not detected      MDL - Method Detection Limit  
 RL = Reporting Limit  
 E = Indicates value exceeds calibration range

J = Indicates an estimated value  
 B = Indicates analyte found in associated method blank  
 N = Indicates presumptive evidence of a compound

4.1  
4

## Report of Analysis

<b>Client Sample ID:</b> MW-2	<b>Date Sampled:</b> 09/09/13
<b>Lab Sample ID:</b> D50381-2	<b>Date Received:</b> 09/11/13
<b>Matrix:</b> AQ - Ground Water	<b>Percent Solids:</b> n/a
<b>Method:</b> SW846 8260B	
<b>Project:</b> TASMCOA:DCP XLINE Etcheverry Ranch	

Run #	File ID	DF	Analyzed	By	Prep Date	Prep Batch	Analytical Batch
Run #1	6V20857.D	1	09/13/13	BR	n/a	n/a	V6V1156
Run #2							

Run #	Purge Volume
Run #1	5.0 ml
Run #2	

**Purgeable Aromatics**

CAS No.	Compound	Result	RL	MDL	Units	Q
71-43-2	Benzene	ND	0.0010	0.00025	mg/l	
108-88-3	Toluene	ND	0.0020	0.0010	mg/l	
100-41-4	Ethylbenzene	0.0036	0.0020	0.00025	mg/l	
1330-20-7	Xylene (total)	0.0213	0.0030	0.0020	mg/l	

CAS No.	Surrogate Recoveries	Run# 1	Run# 2	Limits
17060-07-0	1,2-Dichloroethane-D4	105%		62-130%
2037-26-5	Toluene-D8	110%		70-130%
460-00-4	4-Bromofluorobenzene	89%		69-130%

ND = Not detected      MDL - Method Detection Limit  
 RL = Reporting Limit  
 E = Indicates value exceeds calibration range

J = Indicates an estimated value  
 B = Indicates analyte found in associated method blank  
 N = Indicates presumptive evidence of a compound

4.2  
4



## Report of Analysis

<b>Client Sample ID:</b> MW-3	<b>Date Sampled:</b> 09/09/13
<b>Lab Sample ID:</b> D50381-3	<b>Date Received:</b> 09/11/13
<b>Matrix:</b> AQ - Ground Water	<b>Percent Solids:</b> n/a
<b>Method:</b> SW846 8260B	
<b>Project:</b> TASMCOA:DCP XLINE Etcheverry Ranch	

Run #	File ID	DF	Analyzed	By	Prep Date	Prep Batch	Analytical Batch
Run #1	7V22611.D	1	09/13/13	JL	n/a	n/a	V7V1245
Run #2							

Run #	Purge Volume
Run #1	5.0 ml
Run #2	

### Purgeable Aromatics

CAS No.	Compound	Result	RL	MDL	Units	Q
71-43-2	Benzene	ND	0.0010	0.00025	mg/l	
108-88-3	Toluene	ND	0.0020	0.0010	mg/l	
100-41-4	Ethylbenzene	ND	0.0020	0.00025	mg/l	
1330-20-7	Xylene (total)	ND	0.0030	0.0020	mg/l	

CAS No.	Surrogate Recoveries	Run# 1	Run# 2	Limits
17060-07-0	1,2-Dichloroethane-D4	93%		62-130%
2037-26-5	Toluene-D8	91%		70-130%
460-00-4	4-Bromofluorobenzene	86%		69-130%

ND = Not detected      MDL - Method Detection Limit  
 RL = Reporting Limit  
 E = Indicates value exceeds calibration range

J = Indicates an estimated value  
 B = Indicates analyte found in associated method blank  
 N = Indicates presumptive evidence of a compound

4.3  
4

## Report of Analysis

<b>Client Sample ID:</b> MW-4	<b>Date Sampled:</b> 09/09/13
<b>Lab Sample ID:</b> D50381-4	<b>Date Received:</b> 09/11/13
<b>Matrix:</b> AQ - Ground Water	<b>Percent Solids:</b> n/a
<b>Method:</b> SW846 8260B	
<b>Project:</b> TASMCOA:DCP XLINE Etcheverry Ranch	

Run #	File ID	DF	Analyzed	By	Prep Date	Prep Batch	Analytical Batch
Run #1	7V22612.D	1	09/13/13	JL	n/a	n/a	V7V1245
Run #2							

Run #	Purge Volume
Run #1	5.0 ml
Run #2	

**Purgeable Aromatics**

CAS No.	Compound	Result	RL	MDL	Units	Q
71-43-2	Benzene	ND	0.0010	0.00025	mg/l	
108-88-3	Toluene	ND	0.0020	0.0010	mg/l	
100-41-4	Ethylbenzene	ND	0.0020	0.00025	mg/l	
1330-20-7	Xylene (total)	ND	0.0030	0.0020	mg/l	

CAS No.	Surrogate Recoveries	Run# 1	Run# 2	Limits
17060-07-0	1,2-Dichloroethane-D4	100%		62-130%
2037-26-5	Toluene-D8	99%		70-130%
460-00-4	4-Bromofluorobenzene	83%		69-130%

ND = Not detected      MDL - Method Detection Limit  
 RL = Reporting Limit  
 E = Indicates value exceeds calibration range

J = Indicates an estimated value  
 B = Indicates analyte found in associated method blank  
 N = Indicates presumptive evidence of a compound

4.4  
4

## Report of Analysis

<b>Client Sample ID:</b> MW-5	<b>Date Sampled:</b> 09/09/13
<b>Lab Sample ID:</b> D50381-5	<b>Date Received:</b> 09/11/13
<b>Matrix:</b> AQ - Ground Water	<b>Percent Solids:</b> n/a
<b>Method:</b> SW846 8260B	
<b>Project:</b> TASMCOA:DCP XLINE Etcheverry Ranch	

Run #	File ID	DF	Analyzed	By	Prep Date	Prep Batch	Analytical Batch
Run #1	7V22629.D	1	09/13/13	JL	n/a	n/a	V7V1246
Run #2							

Run #	Purge Volume
Run #1	5.0 ml
Run #2	

**Purgeable Aromatics**

CAS No.	Compound	Result	RL	MDL	Units	Q
71-43-2	Benzene	ND	0.0010	0.00025	mg/l	
108-88-3	Toluene	ND	0.0020	0.0010	mg/l	
100-41-4	Ethylbenzene	ND	0.0020	0.00025	mg/l	
1330-20-7	Xylene (total)	ND	0.0030	0.0020	mg/l	

CAS No.	Surrogate Recoveries	Run# 1	Run# 2	Limits
17060-07-0	1,2-Dichloroethane-D4	94%		62-130%
2037-26-5	Toluene-D8	100%		70-130%
460-00-4	4-Bromofluorobenzene	82%		69-130%

ND = Not detected      MDL - Method Detection Limit  
 RL = Reporting Limit  
 E = Indicates value exceeds calibration range

J = Indicates an estimated value  
 B = Indicates analyte found in associated method blank  
 N = Indicates presumptive evidence of a compound

4.5  
4

## Report of Analysis

<b>Client Sample ID:</b> MW-6	<b>Date Sampled:</b> 09/09/13
<b>Lab Sample ID:</b> D50381-6	<b>Date Received:</b> 09/11/13
<b>Matrix:</b> AQ - Ground Water	<b>Percent Solids:</b> n/a
<b>Method:</b> SW846 8260B	
<b>Project:</b> TASMCOA:DCP XLINE Etcheverry Ranch	

Run #	File ID	DF	Analyzed	By	Prep Date	Prep Batch	Analytical Batch
Run #1	7V22613.D	1	09/13/13	JL	n/a	n/a	V7V1245
Run #2							

Run #	Purge Volume
Run #1	5.0 ml
Run #2	

**Purgeable Aromatics**

CAS No.	Compound	Result	RL	MDL	Units	Q
71-43-2	Benzene	ND	0.0010	0.00025	mg/l	
108-88-3	Toluene	ND	0.0020	0.0010	mg/l	
100-41-4	Ethylbenzene	ND	0.0020	0.00025	mg/l	
1330-20-7	Xylene (total)	ND	0.0030	0.0020	mg/l	

CAS No.	Surrogate Recoveries	Run# 1	Run# 2	Limits
17060-07-0	1,2-Dichloroethane-D4	117%		62-130%
2037-26-5	Toluene-D8	100%		70-130%
460-00-4	4-Bromofluorobenzene	82%		69-130%

ND = Not detected      MDL - Method Detection Limit  
 RL = Reporting Limit  
 E = Indicates value exceeds calibration range

J = Indicates an estimated value  
 B = Indicates analyte found in associated method blank  
 N = Indicates presumptive evidence of a compound

4.6  
4

# Report of Analysis

<b>Client Sample ID:</b> MW-7		
<b>Lab Sample ID:</b> D50381-7		<b>Date Sampled:</b> 09/09/13
<b>Matrix:</b> AQ - Ground Water		<b>Date Received:</b> 09/11/13
<b>Method:</b> SW846 8260B		<b>Percent Solids:</b> n/a
<b>Project:</b> TASMCOA:DCP XLINE Etcheverry Ranch		

Run #	File ID	DF	Analyzed	By	Prep Date	Prep Batch	Analytical Batch
Run #1	7V22614.D	1	09/13/13	JL	n/a	n/a	V7V1245
Run #2							

Run #	Purge Volume
Run #1	5.0 ml
Run #2	

**Purgeable Aromatics**

CAS No.	Compound	Result	RL	MDL	Units	Q
71-43-2	Benzene	ND	0.0010	0.00025	mg/l	
108-88-3	Toluene	ND	0.0020	0.0010	mg/l	
100-41-4	Ethylbenzene	ND	0.0020	0.00025	mg/l	
1330-20-7	Xylene (total)	ND	0.0030	0.0020	mg/l	

CAS No.	Surrogate Recoveries	Run# 1	Run# 2	Limits
17060-07-0	1,2-Dichloroethane-D4	105%		62-130%
2037-26-5	Toluene-D8	107%		70-130%
460-00-4	4-Bromofluorobenzene	87%		69-130%

ND = Not detected      MDL - Method Detection Limit  
 RL = Reporting Limit  
 E = Indicates value exceeds calibration range

J = Indicates an estimated value  
 B = Indicates analyte found in associated method blank  
 N = Indicates presumptive evidence of a compound

4.7  
 4

## Report of Analysis

<b>Client Sample ID:</b> MW-8	<b>Date Sampled:</b> 09/09/13
<b>Lab Sample ID:</b> D50381-8	<b>Date Received:</b> 09/11/13
<b>Matrix:</b> AQ - Ground Water	<b>Percent Solids:</b> n/a
<b>Method:</b> SW846 8260B	
<b>Project:</b> TASMCOA:DCP XLINE Etcheverry Ranch	

Run #	File ID	DF	Analyzed	By	Prep Date	Prep Batch	Analytical Batch
Run #1	7V22615.D	1	09/13/13	JL	n/a	n/a	V7V1245
Run #2							

Run #	Purge Volume
Run #1	5.0 ml
Run #2	

**Purgeable Aromatics**

CAS No.	Compound	Result	RL	MDL	Units	Q
71-43-2	Benzene	0.00037	0.0010	0.00025	mg/l	J
108-88-3	Toluene	ND	0.0020	0.0010	mg/l	
100-41-4	Ethylbenzene	ND	0.0020	0.00025	mg/l	
1330-20-7	Xylene (total)	ND	0.0030	0.0020	mg/l	

CAS No.	Surrogate Recoveries	Run# 1	Run# 2	Limits
17060-07-0	1,2-Dichloroethane-D4	94%		62-130%
2037-26-5	Toluene-D8	97%		70-130%
460-00-4	4-Bromofluorobenzene	82%		69-130%

ND = Not detected      MDL - Method Detection Limit  
 RL = Reporting Limit  
 E = Indicates value exceeds calibration range

J = Indicates an estimated value  
 B = Indicates analyte found in associated method blank  
 N = Indicates presumptive evidence of a compound

4.8  
4

## Report of Analysis

<b>Client Sample ID:</b> DUP <b>Lab Sample ID:</b> D50381-9 <b>Matrix:</b> AQ - Ground Water <b>Method:</b> SW846 8260B <b>Project:</b> TASMCOA:DCP XLINE Etcheverry Ranch	<b>Date Sampled:</b> 09/09/13 <b>Date Received:</b> 09/11/13 <b>Percent Solids:</b> n/a
--	---

Run #	File ID	DF	Analyzed	By	Prep Date	Prep Batch	Analytical Batch
Run #1	7V22616.D	1	09/13/13	JL	n/a	n/a	V7V1245
Run #2							

Run #	Purge Volume
Run #1	5.0 ml
Run #2	

**Purgeable Aromatics**

CAS No.	Compound	Result	RL	MDL	Units	Q
71-43-2	Benzene	0.00044	0.0010	0.00025	mg/l	J
108-88-3	Toluene	ND	0.0020	0.0010	mg/l	
100-41-4	Ethylbenzene	ND	0.0020	0.00025	mg/l	
1330-20-7	Xylene (total)	ND	0.0030	0.0020	mg/l	

CAS No.	Surrogate Recoveries	Run# 1	Run# 2	Limits
17060-07-0	1,2-Dichloroethane-D4	101%		62-130%
2037-26-5	Toluene-D8	100%		70-130%
460-00-4	4-Bromofluorobenzene	84%		69-130%

ND = Not detected      MDL - Method Detection Limit  
 RL = Reporting Limit  
 E = Indicates value exceeds calibration range

J = Indicates an estimated value  
 B = Indicates analyte found in associated method blank  
 N = Indicates presumptive evidence of a compound

4.9  
4

## Report of Analysis

<b>Client Sample ID:</b> TRIP BLANK	<b>Date Sampled:</b> 09/09/13
<b>Lab Sample ID:</b> D50381-10	<b>Date Received:</b> 09/11/13
<b>Matrix:</b> AQ - Trip Blank Water	<b>Percent Solids:</b> n/a
<b>Method:</b> SW846 8260B	
<b>Project:</b> TASMCOA:DCP XLINE Etcheverry Ranch	

Run #	File ID	DF	Analyzed	By	Prep Date	Prep Batch	Analytical Batch
Run #1	7V22617.D	1	09/13/13	JL	n/a	n/a	V7V1245
Run #2							

Run #	Purge Volume
Run #1	5.0 ml
Run #2	

**Purgeable Aromatics**

CAS No.	Compound	Result	RL	MDL	Units	Q
71-43-2	Benzene	ND	0.0010	0.00025	mg/l	
108-88-3	Toluene	ND	0.0020	0.0010	mg/l	
100-41-4	Ethylbenzene	ND	0.0020	0.00025	mg/l	
1330-20-7	Xylene (total)	ND	0.0030	0.0020	mg/l	

CAS No.	Surrogate Recoveries	Run# 1	Run# 2	Limits
17060-07-0	1,2-Dichloroethane-D4	117%		62-130%
2037-26-5	Toluene-D8	105%		70-130%
460-00-4	4-Bromofluorobenzene	85%		69-130%

ND = Not detected      MDL - Method Detection Limit  
 RL = Reporting Limit  
 E = Indicates value exceeds calibration range

J = Indicates an estimated value  
 B = Indicates analyte found in associated method blank  
 N = Indicates presumptive evidence of a compound

4.10  
4



## Misc. Forms

---

5

## Custody Documents and Other Forms

---

Includes the following where applicable:

- Chain of Custody



CHAIN OF CUSTODY

4036 Youngfield Street, Wheat Ridge, CO 80033
TEL: 303-425-6021 FAX: 303-425-6854
www.accutest.com

FED-EX Tracking #
Bottle Order Control #
Accutest Quote #
Accutest Job # D50381

Table with columns: Client / Reporting Information, Project Information, Requested Analysis (see TEST CODE sheet), Matrix Codes, and LAB USE ONLY. Includes sample data for MW-1 through MW-8, DUP, MW-5 MS/MSD, and Trip Blank.

Turnaround Time (Business days) and Data Deliverable Information section. Includes checkboxes for service levels (Std. 15, 10, 5 Day RUSH, etc.) and result delivery options (Email results to Steve Weathers, Report by PDF, etc.).

Sample Custody table with columns: Relinquished by, Date Time, Received By, Date Time, Relinquished By, Date Time, Received By, Date Time. Includes handwritten signatures and dates for sample handovers.

5.1
5

D50381: Chain of Custody

Page 1 of 2

## Accutest Laboratories Sample Receipt Summary

Accutest Job Number: D50381

Client: TASMAN

Immediate Client Services Action Required: No

Date / Time Received: 9/11/2013 10:10:00 AM

No. Coolers: 1

Client Service Action Required at Login: No

Project: DCP XLINE

Airbill #'s: UPS

<b>Cooler Security</b>	<u>Y or N</u>		<u>Y or N</u>	
1. Custody Seals Present:	<input checked="" type="checkbox"/>	<input type="checkbox"/>	3. COC Present:	<input checked="" type="checkbox"/> <input type="checkbox"/>
2. Custody Seals Intact:	<input checked="" type="checkbox"/>	<input type="checkbox"/>	4. Smp'l Dates/Time OK	<input checked="" type="checkbox"/> <input type="checkbox"/>

<b>Cooler Temperature</b>	<u>Y or N</u>	
1. Temp criteria achieved:	<input checked="" type="checkbox"/>	<input type="checkbox"/>
2. Cooler temp verification:	Infrared gun	
3. Cooler media:	Ice (bag)	

<b>Quality Control Preservation</b>	<u>Y or N</u>		<u>N/A</u>
1. Trip Blank present / cooler:	<input checked="" type="checkbox"/>	<input type="checkbox"/>	
2. Trip Blank listed on COC:	<input checked="" type="checkbox"/>	<input type="checkbox"/>	
3. Samples preserved properly:	<input checked="" type="checkbox"/>	<input type="checkbox"/>	
4. VOCs headspace free:	<input checked="" type="checkbox"/>	<input type="checkbox"/>	<input type="checkbox"/>

<b>Sample Integrity - Documentation</b>	<u>Y or N</u>	
1. Sample labels present on bottles:	<input checked="" type="checkbox"/>	<input type="checkbox"/>
2. Container labeling complete:	<input checked="" type="checkbox"/>	<input type="checkbox"/>
3. Sample container label / COC agree:	<input checked="" type="checkbox"/>	<input type="checkbox"/>

<b>Sample Integrity - Condition</b>	<u>Y or N</u>	
1. Sample recvd within HT:	<input checked="" type="checkbox"/>	<input type="checkbox"/>
2. All containers accounted for:	<input checked="" type="checkbox"/>	<input type="checkbox"/>
3. Condition of sample:	Intact	

<b>Sample Integrity - Instructions</b>	<u>Y or N</u>		<u>N/A</u>
1. Analysis requested is clear:	<input checked="" type="checkbox"/>	<input type="checkbox"/>	
2. Bottles received for unspecified tests	<input type="checkbox"/>	<input checked="" type="checkbox"/>	
3. Sufficient volume rec'd for analysis:	<input checked="" type="checkbox"/>	<input type="checkbox"/>	
4. Compositing instructions clear:	<input type="checkbox"/>	<input type="checkbox"/>	<input checked="" type="checkbox"/>
5. Filtering instructions clear:	<input type="checkbox"/>	<input type="checkbox"/>	<input checked="" type="checkbox"/>

Comments

5.1  
5

## GC/MS Volatiles

---

## QC Data Summaries

---

Includes the following where applicable:

- Method Blank Summaries
- Blank Spike Summaries
- Matrix Spike and Duplicate Summaries

## Method Blank Summary

**Job Number:** D50381  
**Account:** DCPMCOA DCP Midstream, LP  
**Project:** TASMCOA:DCP XLINE Etcheverry Ranch

Sample	File ID	DF	Analyzed	By	Prep Date	Prep Batch	Analytical Batch
V7V1245-MB	7V22605.D	1	09/13/13	JL	n/a	n/a	V7V1245

The QC reported here applies to the following samples:

Method: SW846 8260B

D50381-3, D50381-4, D50381-6, D50381-7, D50381-8, D50381-9, D50381-10

CAS No.	Compound	Result	RL	MDL	Units	Q
71-43-2	Benzene	ND	1.0	0.25	ug/l	
100-41-4	Ethylbenzene	ND	2.0	0.25	ug/l	
108-88-3	Toluene	ND	2.0	1.0	ug/l	
1330-20-7	Xylene (total)	ND	3.0	2.0	ug/l	

CAS No.	Surrogate Recoveries	Limits	
17060-07-0	1,2-Dichloroethane-D4	113%	62-130%
2037-26-5	Toluene-D8	106%	70-130%
460-00-4	4-Bromofluorobenzene	83%	69-130%

## Method Blank Summary

**Job Number:** D50381  
**Account:** DCPMCO DN DCP Midstream, LP  
**Project:** TASMCOA:DCP XLINE Etcheverry Ranch

Sample	File ID	DF	Analyzed	By	Prep Date	Prep Batch	Analytical Batch
V6V1156-MB	6V20839.D	1	09/13/13	BR	n/a	n/a	V6V1156

The QC reported here applies to the following samples:

Method: SW846 8260B

D50381-1, D50381-2

CAS No.	Compound	Result	RL	MDL	Units	Q
71-43-2	Benzene	ND	1.0	0.25	ug/l	
100-41-4	Ethylbenzene	ND	2.0	0.25	ug/l	
108-88-3	Toluene	ND	2.0	1.0	ug/l	
1330-20-7	Xylene (total)	ND	3.0	2.0	ug/l	

CAS No.	Surrogate Recoveries	Limits	
17060-07-0	1,2-Dichloroethane-D4	98%	62-130%
2037-26-5	Toluene-D8	109%	70-130%
460-00-4	4-Bromofluorobenzene	89%	69-130%

## Method Blank Summary

**Job Number:** D50381  
**Account:** DCPMCOA DCP Midstream, LP  
**Project:** TASMCOA:DCP XLINE Etcheverry Ranch

Sample	File ID	DF	Analyzed	By	Prep Date	Prep Batch	Analytical Batch
V7V1246-MB	7V22626.D	1	09/13/13	JL	n/a	n/a	V7V1246

The QC reported here applies to the following samples:

Method: SW846 8260B

D50381-5

CAS No.	Compound	Result	RL	MDL	Units	Q
71-43-2	Benzene	ND	1.0	0.25	ug/l	
100-41-4	Ethylbenzene	ND	2.0	0.25	ug/l	
108-88-3	Toluene	ND	2.0	1.0	ug/l	
1330-20-7	Xylene (total)	ND	3.0	2.0	ug/l	

CAS No.	Surrogate Recoveries	Limits	
17060-07-0	1,2-Dichloroethane-D4	99%	62-130%
2037-26-5	Toluene-D8	101%	70-130%
460-00-4	4-Bromofluorobenzene	84%	69-130%

# Blank Spike Summary

**Job Number:** D50381  
**Account:** DCPMCOA DCP Midstream, LP  
**Project:** TASMCOA:DCP XLINE Etcheverry Ranch

Sample	File ID	DF	Analyzed	By	Prep Date	Prep Batch	Analytical Batch
V7V1245-BS	7V22606.D	1	09/13/13	JL	n/a	n/a	V7V1245

The QC reported here applies to the following samples:

Method: SW846 8260B

D50381-3, D50381-4, D50381-6, D50381-7, D50381-8, D50381-9, D50381-10

CAS No.	Compound	Spike ug/l	BSP ug/l	BSP %	Limits
71-43-2	Benzene	50	58.7	117	70-130
100-41-4	Ethylbenzene	50	57.2	114	70-130
108-88-3	Toluene	50	57.7	115	70-130
1330-20-7	Xylene (total)	150	168	112	70-130

CAS No.	Surrogate Recoveries	BSP	Limits
17060-07-0	1,2-Dichloroethane-D4	112%	62-130%
2037-26-5	Toluene-D8	106%	70-130%
460-00-4	4-Bromofluorobenzene	103%	69-130%

\* = Outside of Control Limits.



# Blank Spike Summary

**Job Number:** D50381  
**Account:** DCPMCOA DCP Midstream, LP  
**Project:** TASMCOA:DCP XLINE Etcheverry Ranch

Sample	File ID	DF	Analyzed	By	Prep Date	Prep Batch	Analytical Batch
V6V1156-BS	6V20840.D	1	09/13/13	BR	n/a	n/a	V6V1156

The QC reported here applies to the following samples:

Method: SW846 8260B

D50381-1, D50381-2

CAS No.	Compound	Spike ug/l	BSP ug/l	BSP %	Limits
71-43-2	Benzene	50	48.6	97	70-130
100-41-4	Ethylbenzene	50	54.1	108	70-130
108-88-3	Toluene	50	52.6	105	70-130
1330-20-7	Xylene (total)	150	161	107	70-130

CAS No.	Surrogate Recoveries	BSP	Limits
17060-07-0	1,2-Dichloroethane-D4	97%	62-130%
2037-26-5	Toluene-D8	106%	70-130%
460-00-4	4-Bromofluorobenzene	96%	69-130%

\* = Outside of Control Limits.

# Blank Spike Summary

**Job Number:** D50381  
**Account:** DCPMCOA DCP Midstream, LP  
**Project:** TASMCOA:DCP XLINE Etcheverry Ranch

Sample	File ID	DF	Analyzed	By	Prep Date	Prep Batch	Analytical Batch
V7V1246-BS	7V22627.D	1	09/13/13	JL	n/a	n/a	V7V1246

The QC reported here applies to the following samples:

Method: SW846 8260B

D50381-5

CAS No.	Compound	Spike ug/l	BSP ug/l	BSP %	Limits
71-43-2	Benzene	50	53.9	108	70-130
100-41-4	Ethylbenzene	50	55.4	111	70-130
108-88-3	Toluene	50	53.9	108	70-130
1330-20-7	Xylene (total)	150	170	113	70-130

CAS No.	Surrogate Recoveries	BSP	Limits
17060-07-0	1,2-Dichloroethane-D4	101%	62-130%
2037-26-5	Toluene-D8	102%	70-130%
460-00-4	4-Bromofluorobenzene	101%	69-130%

\* = Outside of Control Limits.

# Matrix Spike Summary

**Job Number:** D50381  
**Account:** DCPMCO DN DCP Midstream, LP  
**Project:** TASMCOA:DCP XLINE Etcheverry Ranch

Sample	File ID	DF	Analyzed	By	Prep Date	Prep Batch	Analytical Batch
D50265-25MS	7V22607.D	5	09/13/13	JL	n/a	n/a	V7V1245
D50265-25	7V22608.D	5	09/13/13	JL	n/a	n/a	V7V1245

**The QC reported here applies to the following samples:** **Method:** SW846 8260B

D50381-3, D50381-4, D50381-6, D50381-7, D50381-8, D50381-9, D50381-10

CAS No.	Compound	D50265-25 ug/l	Spike Q ug/l	MS ug/l	MS %	Limits
71-43-2	Benzene	270	250	552	113	62-130
100-41-4	Ethylbenzene	ND	250	256	102	63-130
108-88-3	Toluene	ND	250	245	98	60-130
1330-20-7	Xylene (total)	ND	750	758	101	67-130

CAS No.	Surrogate Recoveries	MS	D50265-25	Limits
17060-07-0	1,2-Dichloroethane-D4	113%	107%	62-130%
2037-26-5	Toluene-D8	105%	105%	70-130%
460-00-4	4-Bromofluorobenzene	104%	85%	69-130%

\* = Outside of Control Limits.

# Matrix Spike Summary

**Job Number:** D50381  
**Account:** DCPMCO DN DCP Midstream, LP  
**Project:** TASMCOA:DCP XLINE Etcheverry Ranch

Sample	File ID	DF	Analyzed	By	Prep Date	Prep Batch	Analytical Batch
D50381-5MS	7V22628.D	1	09/13/13	JL	n/a	n/a	V7V1246
D50381-5	7V22629.D	1	09/13/13	JL	n/a	n/a	V7V1246

The QC reported here applies to the following samples:

Method: SW846 8260B

D50381-5

CAS No.	Compound	D50381-5 ug/l	Spike Q	ug/l	MS ug/l	MS %	Limits
71-43-2	Benzene	ND	50	46.9	94	62-130	
100-41-4	Ethylbenzene	ND	50	48.5	97	63-130	
108-88-3	Toluene	ND	50	47.5	95	60-130	
1330-20-7	Xylene (total)	ND	150	150	100	67-130	

CAS No.	Surrogate Recoveries	MS	D50381-5	Limits
17060-07-0	1,2-Dichloroethane-D4	98%	94%	62-130%
2037-26-5	Toluene-D8	100%	100%	70-130%
460-00-4	4-Bromofluorobenzene	96%	82%	69-130%

\* = Outside of Control Limits.

# Matrix Spike/Matrix Spike Duplicate Summary

**Job Number:** D50381  
**Account:** DCPMCO DN DCP Midstream, LP  
**Project:** TASMCOA:DCP XLINE Etcheverry Ranch

Sample	File ID	DF	Analyzed	By	Prep Date	Prep Batch	Analytical Batch
D50380-8MS	6V20849.D	1	09/13/13	BR	n/a	n/a	V6V1156
D50380-8MSD	6V20850.D	1	09/13/13	BR	n/a	n/a	V6V1156
D50380-8	6V20848.D	1	09/13/13	BR	n/a	n/a	V6V1156

The QC reported here applies to the following samples:

Method: SW846 8260B

D50381-1, D50381-2

CAS No.	Compound	D50380-8 ug/l	Spike Q ug/l	MS ug/l	MS %	MSD ug/l	MSD %	RPD	Limits Rec/RPD
71-43-2	Benzene	ND	50	46.4	93	50.4	101	8	62-130/30
100-41-4	Ethylbenzene	ND	50	51.5	103	53.8	108	4	63-130/30
108-88-3	Toluene	ND	50	51.2	102	54.5	109	6	60-130/30
1330-20-7	Xylene (total)	ND	150	157	105	163	109	4	67-130/30

CAS No.	Surrogate Recoveries	MS	MSD	D50380-8	Limits
17060-07-0	1,2-Dichloroethane-D4	107%	100%	105%	62-130%
2037-26-5	Toluene-D8	108%	106%	110%	70-130%
460-00-4	4-Bromofluorobenzene	96%	95%	84%	69-130%

\* = Outside of Control Limits.

# Duplicate Summary

**Job Number:** D50381  
**Account:** DCPMCOA DCP Midstream, LP  
**Project:** TASMCOA:DCP XLINE Etcheverry Ranch

Sample	File ID	DF	Analyzed	By	Prep Date	Prep Batch	Analytical Batch
D50265-30DUP	7V22610.D	5	09/13/13	JL	n/a	n/a	V7V1245
D50265-30	7V22609.D	5	09/13/13	JL	n/a	n/a	V7V1245

The QC reported here applies to the following samples:

Method: SW846 8260B

D50381-3, D50381-4, D50381-6, D50381-7, D50381-8, D50381-9, D50381-10

CAS No.	Compound	D50265-30 ug/l	DUP Q ug/l	Q RPD	Limits
71-43-2	Benzene	295	330	11	30
100-41-4	Ethylbenzene	ND	ND	nc	30
108-88-3	Toluene	ND	ND	nc	30
1330-20-7	Xylene (total)	ND	ND	nc	30

CAS No.	Surrogate Recoveries	DUP	D50265-30	Limits
17060-07-0	1,2-Dichloroethane-D4	105%	100%	62-130%
2037-26-5	Toluene-D8	107%	98%	70-130%
460-00-4	4-Bromofluorobenzene	85%	81%	69-130%

\* = Outside of Control Limits.

# Duplicate Summary

**Job Number:** D50381  
**Account:** DCPMCO DN DCP Midstream, LP  
**Project:** TASMCOA:DCP XLINE Etcheverry Ranch

Sample	File ID	DF	Analyzed	By	Prep Date	Prep Batch	Analytical Batch
D50265-20DUP	7V22631.D	10	09/13/13	JL	n/a	n/a	V7V1246
D50265-20	7V22630.D	10	09/13/13	JL	n/a	n/a	V7V1246

The QC reported here applies to the following samples:

Method: SW846 8260B

D50381-5

CAS No.	Compound	D50265-20 ug/l	DUP Q ug/l	Q RPD	Limits
71-43-2	Benzene	819	800	2	30
100-41-4	Ethylbenzene	ND	ND	nc	30
108-88-3	Toluene	ND	ND	nc	30
1330-20-7	Xylene (total)	ND	ND	nc	30

CAS No.	Surrogate Recoveries	DUP	D50265-20	Limits
17060-07-0	1,2-Dichloroethane-D4	101%	94%	62-130%
2037-26-5	Toluene-D8	104%	102%	70-130%
460-00-4	4-Bromofluorobenzene	90%	83%	69-130%

\* = Outside of Control Limits.

**Appendix B**  
**Historical Groundwater Analytical Results**



**APPENDIX B  
HISTORICAL DATA  
SUMMARY OF BTEX CONCENTRATIONS IN GROUNDWATER  
X-LINE PIPELINE RELEASE - ETCHEVERRY RANCH  
LEA COUNTY, NEW MEXICO**

Location Identification	Sample Date	Benzene (mg/l)	Toluene (mg/l)	Ethylbenzene (mg/l)	Total Xylenes (mg/l)	Comments
<b>New Mexico Water Quality Control Commission Groundwater Standards (mg/L)</b>		<b>0.01</b>	<b>0.75</b>	<b>0.75</b>	<b>0.62</b>	
MW-1	4/24/2002	<0.002	<0.002	<0.002	<0.006	
MW-1	5/21/2002	0.002	<0.002	0.003	<0.006	
MW-1	4/28/2003	<0.001	<0.001	<0.001	<0.001	
MW-1	6/19/2003	<0.001	<0.001	<0.001	<0.001	
MW-1	7/17/2003	<0.001	<0.001	<0.001	<0.001	
MW-1	8/20/2003	<0.001	<0.001	<0.001	<0.001	
MW-1	9/22/2003	<0.001	<0.001	<0.001	<0.001	
MW-1	10/29/2003	<0.001	<0.001	<0.001	<0.001	
MW-1	11/20/2003	<0.001	<0.001	<0.001	<0.001	
MW-1	2/18/2004	<0.001	<0.001	<0.001	0.0514	
MW-1	6/25/2004	<0.001	<0.001	<0.001	<0.001	
MW-1	10/18/2004	<0.001	<0.001	<0.001	<0.001	
MW-1	12/9/2004	<0.001	<0.001	<0.001	<0.001	
MW-1	3/3/2005	<0.001	<0.001	<0.001	<0.001	
MW-1	6/3/2005	<0.001	<0.001	<0.001	<0.001	
MW-1	9/28/2005	<0.001	<0.001	<0.001	<0.001	
MW-1	12/12/2005	<0.001	<0.001	<0.001	<0.001	
MW-1	3/1/2006	<0.001	<0.001	<0.001	<0.001	
MW-1	6/26/2006	<0.001	<0.001	<0.001	<0.001	
MW-1	9/28/2006	<0.001	<0.001	<0.001	<0.001	
MW-1	12/21/2006	<0.001	<0.001	<0.001	<0.001	
MW-1	3/13/2007	<0.001	<0.001	<0.001	<0.001	
MW-1	6/26/2007	<0.001	<0.001	<0.001	<0.002	
MW-1	9/5/2007	<0.002	<0.002	<0.002	<0.004	
MW-1	12/27/2007	0.00093	<0.002	0.002	0.0028	
MW-1	3/20/2008	<0.002	<0.002	<0.002	<0.006	
MW-1	6/27/2008	<0.002	<0.002	<0.002	<0.002	
MW-1	9/15/2008	<0.002	<0.002	<0.002	<0.006	
MW-1	12/1/2008	<0.002	<0.002	<0.002	<0.006	
MW-1	3/11/2009	<0.002	<0.002	<0.002	<0.006	
MW-1	5/27/2009	<0.002	<0.002	<0.002	<0.006	
MW-1	9/24/2009	<0.002	<0.002	<0.002	<0.006	
MW-1	12/18/2009	<0.002	<0.002	<0.002	<0.006	
MW-1	3/25/2010	<0.001	<0.002	<0.002	<0.004	
MW-1	6/30/2010	<0.0003	<0.0003	<0.001	<0.0006	
MW-1	9/16/2010	<0.001	<0.002	<0.002	<0.004	
MW-1	12/9/2010	<0.001	<0.002	<0.002	<0.004	
MW-1	3/28/2011	<0.001	<0.002	<0.002	<0.004	
MW-1	6/22/2011	<0.001	<0.002	<0.002	<0.004	
MW-1	9/18/2011	<0.001	<0.002	<0.002	<0.004	
MW-1	12/9/2011	<0.0005	<0.001	<0.001	<0.001	
MW-1	3/11/2012	<0.001	<0.002	<0.002	<0.004	Duplicate sample collected
MW-1	6/8/2012	<0.001	<0.002	<0.002	<0.003	Duplicate sample collected
MW-1	9/10/2012	<0.001	<0.002	<0.002	<0.003	
MW-1	12/7/2012	<0.001	<0.002	<0.002	<0.003	
MW-1	2/20/2013	<0.001	<0.002	<0.002	<0.003	
MW-1	6/2/2013	<0.001	<0.002	<0.002	<0.003	
MW-1	9/9/2013	<0.001	<0.002	<0.002	<0.003	

**APPENDIX B  
HISTORICAL DATA  
SUMMARY OF BTEX CONCENTRATIONS IN GROUNDWATER  
X-LINE PIPELINE RELEASE - ETCHEVERRY RANCH  
LEA COUNTY, NEW MEXICO**

Location Identification	Sample Date	Benzene (mg/l)	Toluene (mg/l)	Ethylbenzene (mg/l)	Total Xylenes (mg/l)	Comments
<b>New Mexico Water Quality Control Commission Groundwater Standards (mg/L)</b>		<b>0.01</b>	<b>0.75</b>	<b>0.75</b>	<b>0.62</b>	
MW-2	4/24/2002	0.0255	0.013	0.107	0.38	
MW-2	5/21/2002	0.145	0.062	0.833	1.27	
MW-2	4/28/2003	0.182	0.121	0.092	0.133	
MW-2	6/19/2003	0.074	0.069	0.066	0.103	
MW-2	7/17/2003	0.155	0.112	0.15	0.186	
MW-2	8/20/2003	0.024	0.012	0.092	0.179	
MW-2	9/22/2003	0.022	0.012	0.051	0.079	
MW-2	10/29/2003	0.001	0.002	0.004	0.017	
MW-2	11/20/2003	0.013	0.005	0.017	0.034	
MW-2	2/18/2004	<0.001	0.00301	0.00652	0.00067	
MW-2	6/25/2004	0.00156	0.0005	0.00108	0.00106	
MW-2	10/18/2004	0.0103	0.00336	0.00648	0.0052	
MW-2	12/9/2004	0.00342	0.00122	0.00206	<0.001	
MW-2	3/3/2005	<0.001	<0.001	<0.001	<0.001	
MW-2	6/3/2005	<0.001	<0.001	<0.001	<0.001	
MW-2	9/28/2005	<0.001	<0.001	<0.001	<0.001	
MW-2	12/12/2005	<0.001	<0.001	<0.001	<0.001	
MW-2	3/1/2006	<0.001	<0.001	<0.001	<0.001	
MW-2	6/26/2006	0.0006	<0.001	0.00114	0.00125	
MW-2	9/28/2006	0.0007	0.0003	0.00137	0.0014	
MW-2	12/21/2006	<0.001	<0.001	<0.001	<0.001	
MW-2	3/13/2007	0.000674	0.0012	0.00512	0.0077	
MW-2	6/26/2007	<0.001	0.0024	0.0102	0.013	
MW-2	9/5/2007	<0.002	<0.002	0.0075	0.0078	
MW-2	12/27/2007	0.00057	0.000761	0.0039	0.0051	
MW-2	3/20/2008	<0.002	0.01	0.03	0.06	
MW-2	6/27/2008	0.00096	0.0229	0.0073	0.0229	
MW-2	9/15/2008	0.00096	0.02	0.03	0.12	
MW-2	12/1/2008	<0.002	0.0147	0.0135	0.143	
MW-2	3/11/2009	<0.002	0.0123	0.0048	0.12	
MW-2	5/27/2009	<0.002	0.01	0.01	0.16	
MW-2	9/24/2009	<0.002	0.0096	<0.002	0.103	
MW-2	12/18/2009	<0.002	0.0086	<0.002	0.0916	
MW-2	3/25/2010	<0.001	0.0087	<0.002	0.0923	
MW-2	6/30/2010	<0.0003	0.0062	<0.001	0.0417	
MW-2	9/16/2010	<0.001	0.007	<0.002	0.0786	
MW-2	12/9/2010	0.00049	0.0147	<0.002	0.1317	
MW-2	3/28/2011	<0.001	0.005	<0.002	0.0455	
MW-2	6/22/2011	<0.002	1.002	<0.0164	1.185	
MW-2	9/18/2011	<0.001	<0.002	0.0123	0.14	
MW-2	12/9/2011	<0.0005	<0.001	0.0143	0.128	Duplicate sample collected
MW-2	3/11/2012	<0.001	<0.002	0.0036	0.0372	
MW-2	6/8/2012	<0.001	<0.002	0.00067	0.0056	
MW-2	9/10/2012	<0.001	<0.002	0.0089	0.0721	
MW-2	12/7/2012	<0.001	<0.002	0.0079	0.0665	
MW-2	2/20/2013	<0.001	<0.002	0.0045	0.0364	
MW-2	6/2/2013	<0.001	<0.002	0.0108	0.0856	
MW-2	9/9/2013	<0.001	<0.002	0.0036	0.0213	

**APPENDIX B  
HISTORICAL DATA  
SUMMARY OF BTEX CONCENTRATIONS IN GROUNDWATER  
X-LINE PIPELINE RELEASE - ETCHEVERRY RANCH  
LEA COUNTY, NEW MEXICO**

Location Identification	Sample Date	Benzene (mg/l)	Toluene (mg/l)	Ethylbenzene (mg/l)	Total Xylenes (mg/l)	Comments
<b>New Mexico Water Quality Control Commission Groundwater Standards (mg/L)</b>		<b>0.01</b>	<b>0.75</b>	<b>0.75</b>	<b>0.62</b>	
MW-3	4/24/2002	0.061	0.023	<0.002	0.189	
MW-3	5/21/2002	0.176	0.023	0.004	0.451	
MW-3	4/28/2003	0.099	0.03	0.005	0.039	
MW-3	6/19/2003	0.047	0.02	<0.001	0.006	
MW-3	7/17/2003	0.063	0.023	0.002	0.007	
MW-3	8/20/2003	0.017	0.006	<0.001	0.001	
MW-3	9/22/2003	0.049	0.02	<0.001	0.001	
MW-3	10/29/2003	0.044	0.018	<0.001	0.001	
MW-3	11/20/2003	0.048	0.017	0.003	0.004	
MW-3	2/18/2004	0.028	0.0138	<0.001	<0.001	
MW-3	6/25/2004	0.0173	0.0136	0.000158	0.000118	
MW-3	10/18/2004	0.00584	0.00692	<0.001	0.0015	
MW-3	12/9/2004	0.006137	0.00884	<0.001	<0.001	
MW-3	3/3/2005	0.00167	0.00167	<0.001	0.00044	
MW-3	6/3/2005	0.00332	0.00574	<0.001	0.00173	
MW-3	9/28/2005	<0.001	0.00101	0.000482	0.000997	
MW-3	12/12/2005	<0.001	<0.001	<0.001	<0.001	
MW-3	3/1/2006	<0.001	<0.001	<0.001	<0.001	
MW-3	6/26/2006	<0.001	<0.001	<0.001	<0.001	
MW-3	9/28/2006	<0.001	<0.001	<0.001	<0.001	
MW-3	12/21/2006	<0.001	<0.001	<0.001	<0.001	
MW-3	3/13/2007	<0.001	<0.001	<0.001	<0.001	
MW-3	6/26/2007	<0.001	<0.0011	<0.001	<0.002	
MW-3	9/5/2007	<0.002	<0.002	<0.002	<0.004	
MW-3	12/27/2007	<0.002	<0.002	0.0012	<0.006	
MW-3	3/20/2008	<0.002	<0.002	<0.002	<0.006	
MW-3	6/27/2008	<0.002	<0.002	<0.002	<0.002	
MW-3	9/15/2008	<0.002	<0.002	<0.002	<0.006	
MW-3	12/1/2008	<0.002	<0.002	<0.002	<0.006	
MW-3	3/11/2009	<0.002	<0.002	<0.002	<0.006	
MW-3	5/27/2009	<0.002	<0.002	<0.002	<0.006	
MW-3	9/24/2009	<0.002	<0.002	<0.002	<0.006	
MW-3	12/18/2009	<0.002	<0.002	<0.002	<0.006	
MW-3	3/25/2010	<0.001	<0.002	<0.002	<0.004	
MW-3	6/30/2010	<0.0003	<0.0003	<0.001	<0.0006	
MW-3	9/16/2010	<0.001	<0.002	<0.002	<0.004	
MW-3	12/9/2010	<0.001	<0.002	<0.002	<0.004	
MW-3	3/28/2011	<0.001	<0.002	<0.002	<0.004	
MW-3	6/22/2011	<0.001	<0.002	<0.002	<0.004	
MW-3	9/18/2011	<0.001	<0.002	<0.002	<0.004	
MW-3	12/9/2011	<0.0005	<0.001	<0.001	<0.001	
MW-3	3/11/2012	<0.001	<0.002	<0.002	<0.004	
MW-3	6/8/2012	<0.001	<0.002	<0.002	<0.003	
MW-3	9/10/2012	<0.001	<0.002	<0.002	<0.003	
MW-3	12/7/2012	<0.001	<0.002	<0.002	<0.003	
MW-3	2/20/2013	<0.001	<0.002	<0.002	<0.003	
MW-3	6/2/2013	<0.001	<0.002	<0.002	<0.003	
MW-3	9/9/2013	<0.001	<0.002	<0.002	<0.003	

**APPENDIX B  
HISTORICAL DATA  
SUMMARY OF BTEX CONCENTRATIONS IN GROUNDWATER  
X-LINE PIPELINE RELEASE - ETCHEVERRY RANCH  
LEA COUNTY, NEW MEXICO**

Location Identification	Sample Date	Benzene (mg/l)	Toluene (mg/l)	Ethylbenzene (mg/l)	Total Xylenes (mg/l)	Comments
<b>New Mexico Water Quality Control Commission Groundwater Standards (mg/L)</b>		<b>0.01</b>	<b>0.75</b>	<b>0.75</b>	<b>0.62</b>	
MW-4	4/24/2002	<0.002	<0.002	<0.002	<0.006	
MW-4	5/21/2002	<0.002	<0.002	<0.002	<0.006	
MW-4	4/28/2003	<0.001	<0.001	<0.001	<0.001	
MW-4	6/19/2003	<0.001	<0.001	<0.001	<0.001	
MW-4	7/17/2003	<0.001	<0.001	<0.001	<0.001	
MW-4	8/20/2003	<0.001	<0.001	<0.001	<0.001	
MW-4	9/22/2003	<0.001	<0.001	<0.001	<0.001	
MW-4	10/29/2003	<0.001	<0.001	<0.001	<0.001	
MW-4	11/20/2003	<0.001	<0.001	<0.001	<0.001	
MW-4	2/18/2004	<0.001	<0.001	<0.001	<0.001	
MW-4	6/25/2004	<0.001	<0.001	<0.001	<0.001	
MW-4	10/18/2004	<0.001	<0.001	<0.001	<0.001	
MW-4	12/9/2004	<0.001	<0.001	<0.001	<0.001	
MW-4	3/3/2005	<0.001	<0.001	<0.001	<0.001	
MW-4	6/3/2005	<0.001	<0.001	<0.001	<0.001	
MW-4	9/28/2005	<0.001	<0.001	<0.001	<0.001	
MW-4	12/12/2005	<0.001	<0.001	<0.001	<0.001	
MW-4	3/1/2006	<0.001	<0.001	<0.001	<0.001	
MW-4	6/26/2006	<0.001	<0.001	<0.001	<0.001	
MW-4	9/28/2006	<0.001	<0.001	<0.001	<0.001	
MW-4	12/21/2006	<0.001	<0.001	<0.001	<0.001	
MW-4	3/13/2007	<0.001	<0.001	<0.001	<0.001	
MW-4	6/26/2007	<0.001	<0.001	<0.001	<0.002	
MW-4	9/5/2007	<0.002	<0.002	<0.002	<0.004	
MW-4	12/27/2007	0.00053	<0.002	0.001	0.0016	
MW-4	3/20/2008	<0.002	<0.002	<0.002	<0.006	
MW-4	6/27/2008	<0.002	<0.002	<0.002	<0.002	
MW-4	9/15/2008	<0.002	<0.002	<0.002	<0.006	
MW-4	12/1/2008	<0.002	<0.002	<0.002	<0.006	
MW-4	3/11/2009	<0.002	<0.002	<0.002	<0.006	
MW-4	5/27/2009	<0.002	<0.002	<0.002	<0.006	
MW-4	9/24/2009	<0.002	<0.002	<0.002	<0.006	
MW-4	12/18/2009	<0.002	<0.002	<0.002	<0.006	
MW-4	3/25/2010	<0.001	<0.002	<0.002	<0.004	
MW-4	6/30/2010	<0.0003	<0.0003	<0.001	<0.0006	
MW-4	9/16/2010	<0.001	<0.002	<0.002	<0.004	
MW-4	12/9/2010	<0.001	<0.002	<0.002	<0.004	
MW-4	3/28/2011	<0.001	<0.002	<0.002	<0.004	
MW-4	6/22/2011	<0.001	<0.002	<0.002	<0.004	
MW-4	9/18/2011	<0.001	<0.002	<0.002	<0.004	
MW-4	12/9/2011	<0.0005	<0.001	<0.001	<0.001	
MW-4	3/11/2012	<0.001	<0.002	<0.002	<0.004	
MW-4	6/8/2012	<0.001	<0.002	<0.002	<0.003	
MW-4	9/10/2012	<0.001	<0.002	<0.002	<0.003	
MW-4	12/7/2012	<0.001	<0.002	<0.002	<0.003	
MW-4	2/20/2013	<0.001	<0.002	<0.002	<0.003	
MW-4	6/2/2013	<0.001	<0.002	<0.002	<0.003	
MW-4	9/9/2013	<0.001	<0.002	<0.002	<0.003	

**APPENDIX B  
HISTORICAL DATA  
SUMMARY OF BTEX CONCENTRATIONS IN GROUNDWATER  
X-LINE PIPELINE RELEASE - ETCHEVERRY RANCH  
LEA COUNTY, NEW MEXICO**

Location Identification	Sample Date	Benzene (mg/l)	Toluene (mg/l)	Ethylbenzene (mg/l)	Total Xylenes (mg/l)	Comments
<b>New Mexico Water Quality Control Commission Groundwater Standards (mg/L)</b>		<b>0.01</b>	<b>0.75</b>	<b>0.75</b>	<b>0.62</b>	
MW-5	4/24/2002	<0.002	<0.002	<0.002	0.011	
MW-5	5/21/2002	<0.002	<0.002	<0.002	<0.006	
MW-5	4/28/2003	0.005	<0.001	<0.001	0.003	
MW-5	6/19/2003	<0.001	<0.001	<0.001	0.003	
MW-5	7/17/2003	<0.001	<0.001	<0.001	0.002	
MW-5	8/20/2003	<0.001	<0.001	<0.001	<0.001	
MW-5	9/22/2003	<0.001	<0.001	<0.001	<0.001	
MW-5	10/29/2003	<0.001	<0.001	<0.001	<0.001	
MW-5	11/20/2003	<0.001	<0.001	<0.001	<0.001	
MW-5	2/18/2004	<0.001	<0.001	<0.001	<0.001	
MW-5	6/25/2004	<0.001	<0.001	<0.001	<0.001	
MW-5	10/18/2004	<0.001	<0.001	<0.001	<0.001	
MW-5	12/9/2004	<0.001	<0.001	<0.001	<0.001	
MW-5	3/3/2005	<0.001	<0.001	<0.001	<0.001	
MW-5	6/3/2005	<0.001	<0.001	<0.001	<0.001	
MW-5	9/28/2005	<0.001	<0.001	<0.001	<0.001	
MW-5	12/12/2005	<0.001	<0.001	<0.001	<0.001	
MW-5	3/1/2006	<0.001	<0.001	<0.001	<0.001	
MW-5	6/26/2006	<0.001	<0.001	<0.001	<0.001	
MW-5	9/28/2006	<0.001	<0.001	<0.001	<0.001	
MW-5	12/21/2006	<0.001	<0.001	<0.001	<0.001	
MW-5	3/13/2007	<0.001	<0.001	<0.001	<0.001	
MW-5	6/26/2007	<0.001	<0.001	<0.001	<0.002	
MW-5	9/5/2007	<0.002	<0.002	<0.002	<0.004	
MW-5	12/27/2007	<0.002	<0.002	0.00098	<0.006	
MW-5	3/20/2008	<0.002	<0.002	<0.002	<0.006	
MW-5	6/27/2008	<0.002	<0.002	<0.002	<0.002	
MW-5	9/15/2008	<0.002	<0.002	<0.002	<0.006	
MW-5	12/1/2008	<0.002	<0.002	<0.002	<0.006	
MW-5	3/11/2009	<0.002	<0.002	<0.002	<0.006	
MW-5	5/27/2009	<0.002	<0.002	<0.002	<0.006	
MW-5	9/24/2009	<0.002	<0.002	<0.002	<0.006	
MW-5	12/18/2009	<0.002	<0.002	<0.002	<0.006	
MW-5	3/25/2010	<0.001	<0.002	<0.002	<0.004	
MW-5	6/30/2010	<0.0003	<0.0003	<0.001	<0.0006	
MW-5	9/16/2010	<0.001	<0.002	<0.002	<0.004	
MW-5	12/9/2010	<0.001	<0.002	<0.002	<0.004	
MW-5	3/28/2011	<0.001	<0.002	<0.002	0.012	
MW-5	6/22/2011	<0.001	<0.002	<0.002	<0.004	
MW-5	9/18/2011	<0.001	<0.002	<0.002	<0.004	
MW-5	12/9/2011	<0.0005	<0.001	<0.001	<0.001	
MW-5	3/11/2012	<0.001	<0.002	<0.002	<0.004	
MW-5	6/8/2012	<0.001	<0.002	<0.002	<0.003	
MW-5	9/10/2012	<0.001	<0.002	<0.002	<0.003	
MW-5	12/7/2012	<0.001	<0.002	<0.002	<0.003	
MW-5	2/20/2013	<0.001	<0.002	<0.002	<0.003	
MW-5	6/2/2013	<0.001	<0.002	<0.002	<0.003	
MW-5	9/9/2013	<0.001	<0.002	<0.002	<0.003	

**APPENDIX B  
HISTORICAL DATA  
SUMMARY OF BTEX CONCENTRATIONS IN GROUNDWATER  
X-LINE PIPELINE RELEASE - ETCHEVERRY RANCH  
LEA COUNTY, NEW MEXICO**

Location Identification	Sample Date	Benzene (mg/l)	Toluene (mg/l)	Ethylbenzene (mg/l)	Total Xylenes (mg/l)	Comments
<b>New Mexico Water Quality Control Commission Groundwater Standards (mg/L)</b>		<b>0.01</b>	<b>0.75</b>	<b>0.75</b>	<b>0.62</b>	
MW-6	4/24/2002	<0.002	0.004	<0.002	0.123	
MW-6	5/21/2002	0.002	0.002	<0.002	0.047	
MW-6	4/28/2003	0.003	0.002	<0.001	0.01	
MW-6	6/19/2003	<0.001	<0.001	<0.001	<0.001	
MW-6	7/17/2003	<0.001	0.004	<0.001	0.004	
MW-6	8/20/2003	<0.001	<0.001	<0.001	<0.001	
MW-6	9/22/2003	<0.001	<0.001	<0.001	<0.001	
MW-6	10/29/2003	<0.001	<0.001	<0.001	0.003	
MW-6	11/20/2003	<0.001	<0.001	<0.001	<0.001	
MW-6	2/18/2004	<0.001	<0.001	<0.001	<0.001	
MW-6	6/25/2004	<0.001	<0.001	<0.001	<0.001	
MW-6	10/18/2004	<0.001	<0.001	<0.001	<0.001	
MW-6	12/9/2004	<0.001	<0.001	<0.001	<0.001	
MW-6	3/3/2005	<0.001	<0.001	<0.001	<0.001	
MW-6	6/3/2005	<0.001	<0.001	<0.001	<0.001	
MW-6	9/28/2005	<0.001	<0.001	<0.001	<0.001	
MW-6	12/12/2005	<0.001	<0.001	<0.001	<0.001	
MW-6	3/1/2006	<0.001	<0.001	<0.001	<0.001	
MW-6	6/26/2006	<0.001	<0.001	<0.001	<0.001	
MW-6	9/28/2006	<0.001	0.001	<0.001	<0.001	
MW-6	12/21/2006	<0.001	<0.001	<0.001	<0.001	
MW-6	3/13/2007	<0.001	<0.001	<0.001	<0.001	
MW-6	6/26/2007	<0.001	<0.001	<0.001	<0.002	
MW-6	9/5/2007	<0.002	<0.002	<0.002	<0.004	
MW-6	12/27/2007	0.00074	0.0033	0.0013J	<0.006	
MW-6	3/20/2008	<0.002	<0.002	<0.002	<0.006	
MW-6	6/27/2008	<0.002	<0.002	0.00098	<0.002	
MW-6	9/15/2008	<0.002	0.0031	<0.002	<0.006	
MW-6	12/1/2008	<0.002	<0.002	<0.002	<0.006	
MW-6	3/11/2009	<0.002	<0.002	<0.002	<0.006	
MW-6	5/27/2009	<0.002	<0.002	<0.002	<0.006	
MW-6	9/24/2009	<0.002	<0.002	<0.002	<0.006	
MW-6	12/18/2009	<0.002	<0.002	<0.002	<0.006	
MW-6	3/25/2010	<0.001	<0.002	<0.002	<0.004	
MW-6	6/30/2010	<0.0003	<0.0003	<0.001	<0.0006	
MW-6	9/16/2010	<0.001	<0.002	<0.002	<0.004	
MW-6	12/9/2010	<0.001	<0.002	<0.002	<0.004	
MW-6	3/28/2011	<0.001	<0.002	<0.002	<0.004	
MW-6	6/22/2011	<0.001	<0.002	<0.002	<0.004	
MW-6	9/18/2011	<0.001	<0.002	<0.002	<0.004	
MW-6	12/9/2011	<0.0005	<0.001	<0.001	<0.001	
MW-6	3/11/2012	<0.001	<0.002	<0.002	<0.004	
MW-6	6/8/2012	<0.001	<0.002	<0.002	<0.003	
MW-6	9/10/2012	<0.001	<0.002	<0.002	<0.003	
MW-6	12/7/2012	<0.001	<0.002	<0.002	<0.003	
MW-6	2/20/2013	<0.001	<0.002	<0.002	<0.003	
MW-6	6/2/2013	<0.001	<0.002	<0.002	<0.003	
MW-6	9/9/2013	<0.001	<0.002	<0.002	<0.003	

**APPENDIX B  
HISTORICAL DATA  
SUMMARY OF BTEX CONCENTRATIONS IN GROUNDWATER  
X-LINE PIPELINE RELEASE - ETCHEVERRY RANCH  
LEA COUNTY, NEW MEXICO**

Location Identification	Sample Date	Benzene (mg/l)	Toluene (mg/l)	Ethylbenzene (mg/l)	Total Xylenes (mg/l)	Comments
<b>New Mexico Water Quality Control Commission Groundwater Standards (mg/L)</b>		<b>0.01</b>	<b>0.75</b>	<b>0.75</b>	<b>0.62</b>	
MW-7	4/24/2002	NI	NI	NI	NI	
MW-7	5/21/2002	NI	NI	NI	NI	
MW-7	4/28/2003	<0.001	<0.001	<0.001	<0.001	
MW-7	6/19/2003	<0.001	<0.001	<0.001	<0.001	
MW-7	7/17/2003	<0.001	<0.001	<0.001	<0.001	
MW-7	8/20/2003	<0.001	<0.001	<0.001	<0.001	
MW-7	9/22/2003	<0.001	<0.001	<0.001	<0.001	
MW-7	10/29/2003	0.001	0.001	0.001	0.006	
MW-7	11/20/2003	0.001	<0.001	<0.001	0.001	
MW-7	2/18/2004	<0.001	<0.001	<0.001	<0.001	
MW-7	6/25/2004	<0.001	<0.001	<0.001	<0.001	
MW-7	10/18/2004	<0.001	<0.001	<0.001	<0.001	
MW-7	12/9/2004	<0.001	<0.001	<0.001	<0.001	
MW-7	3/3/2005	<0.001	<0.001	<0.001	<0.001	
MW-7	6/3/2005	<0.001	<0.001	<0.001	<0.001	
MW-7	9/28/2005	<0.001	<0.001	<0.001	<0.001	
MW-7	12/12/2005	<0.001	<0.001	<0.001	<0.001	
MW-7	3/1/2006	<0.001	<0.001	<0.001	<0.001	
MW-7	6/26/2006	<0.001	<0.001	<0.001	<0.001	
MW-7	9/28/2006	<0.001	<0.001	<0.001	<0.001	
MW-7	12/21/2006	<0.001	<0.001	<0.001	<0.001	
MW-7	3/13/2007	<0.001	<0.001	<0.001	<0.001	
MW-7	6/26/2007	<0.001	<0.001	<0.001	<0.002	
MW-7	9/5/2007	<0.002	<0.002	<0.002	<0.004	
MW-7	12/27/2007	<0.002	<0.002	<0.002	<0.006	
MW-7	3/20/2008	<0.002	<0.002	<0.002	<0.006	
MW-7	6/27/2008	<0.002	<0.002	<0.002	<0.002	
MW-7	9/15/2008	<0.002	<0.002	<0.002	<0.006	
MW-7	12/1/2008	<0.002	<0.002	<0.002	<0.006	
MW-7	3/11/2009	<0.002	<0.002	<0.002	<0.006	
MW-7	5/27/2009	<0.002	<0.002	<0.002	<0.006	
MW-7	9/24/2009	<0.002	<0.002	<0.002	<0.006	
MW-7	12/18/2009	<0.002	<0.002	<0.002	<0.006	
MW-7	3/25/2010	<0.001	<0.002	<0.002	<0.004	
MW-7	6/30/2010	<0.0003	<0.002	<0.001	<0.0006	
MW-7	9/16/2010	<0.001	<0.002	<0.002	<0.004	
MW-7	12/9/2010	<0.001	<0.003	<0.002	<0.004	
MW-7	3/28/2011	<0.001	<0.002	<0.002	<0.004	
MW-7	6/22/2011	<0.001	<0.002	<0.002	<0.004	
MW-7	9/18/2011	<0.001	<0.002	<0.002	<0.004	
MW-7	12/9/2011	<0.0005	<0.001	<0.001	<0.001	
MW-7	3/11/2012	<0.001	<0.002	<0.002	<0.004	
MW-7	6/8/2012	<0.001	<0.002	<0.002	<0.003	
MW-7	9/10/2012	<0.001	<0.002	<0.002	<0.003	
MW-7	12/7/2012	<0.001	<0.002	<0.002	<0.003	
MW-7	2/20/2013	<0.001	<0.002	<0.002	<0.003	
MW-7	6/2/2013	<0.001	<0.002	<0.002	<0.003	
MW-7	9/9/2013	<0.001	<0.002	<0.002	<0.003	

**APPENDIX B  
HISTORICAL DATA  
SUMMARY OF BTEX CONCENTRATIONS IN GROUNDWATER  
X-LINE PIPELINE RELEASE - ETCHEVERRY RANCH  
LEA COUNTY, NEW MEXICO**

Location Identification	Sample Date	Benzene (mg/l)	Toluene (mg/l)	Ethylbenzene (mg/l)	Total Xylenes (mg/l)	Comments
<b>New Mexico Water Quality Control Commission Groundwater Standards (mg/L)</b>		<b>0.01</b>	<b>0.75</b>	<b>0.75</b>	<b>0.62</b>	
MW-8	4/24/2002	NI	NI	NI	NI	
MW-8	5/21/2002	NI	NI	NI	NI	
MW-8	4/28/2003	FPH	FPH	FPH	FPH	
MW-8	6/19/2003	FPH	FPH	FPH	FPH	
MW-8	7/17/2003	FPH	FPH	FPH	FPH	
MW-8	8/20/2003	FPH	FPH	FPH	FPH	
MW-8	9/22/2003	FPH	FPH	FPH	FPH	
MW-8	10/29/2003	FPH	FPH	FPH	FPH	
MW-8	11/20/2003	FPH	FPH	FPH	FPH	
MW-8	2/18/2004	FPH	FPH	FPH	FPH	
MW-8	6/25/2004	FPH	FPH	FPH	FPH	
MW-8	10/18/2004	FPH	FPH	FPH	FPH	
MW-8	12/9/2004	FPH	FPH	FPH	FPH	
MW-8	3/3/2005	NS	NS	NS	NS	
MW-8	6/3/2005	FPH	FPH	FPH	FPH	
MW-8	9/28/2005	FPH	FPH	FPH	FPH	
MW-8	12/12/2005	0.561	0.928	2.98	9.89	
MW-8	3/1/2006	FPH	FPH	FPH	FPH	
MW-8	6/26/2006	FPH	FPH	FPH	FPH	
MW-8	9/28/2006	0.24	0.239	0.791	2.27	
MW-8	12/21/2006	FPH	FPH	FPH	FPH	
MW-8	3/13/2007	0.42	0.437	0.977	3.35	
MW-8	6/26/2007	FPH	FPH	FPH	FPH	
MW-8	9/5/2007	FPH	FPH	FPH	FPH	
MW-8	12/27/2007	FPH	FPH	FPH	FPH	
MW-8	3/20/2008	0.28	0.15	0.35	2.8	
MW-8	6/27/2008	0.18	0.0971	0.388	0.388	
MW-8	9/15/2008	0.14	0.17	0.25	2.42	
MW-8	12/1/2008	FPH	FPH	FPH	FPH	
MW-8	3/11/2009	0.219	0.133	0.257	3.76	
MW-8	5/27/2009	0.719*	0.233*	2.00*	4.72*	
MW-8	9/24/2009	0.775	0.238	2.52	5.1	
MW-8	12/18/2009	0.409	0.114	1.11	5.24	
MW-8	3/25/2010	0.691	45.6	63.4	2220	
MW-8	6/30/2010	0.549	0.145	1.48	3.49	
MW-8	9/16/2010	0.653	0.165	1.07	6.37	
MW-8	12/9/2010	NS	NS	NS	NS	
MW-8	3/28/2011	<b>0.443</b>	0.0817	0.717	<b>2.34</b>	
MW-8	6/22/2011	<b>0.204</b>	0.444	0.0822	<b>2.72</b>	
MW-8	9/18/2011	<b>0.682</b>	0.699	0.112	<b>3.03</b>	
MW-8*	12/9/2011	NS	NS	NS	NS	
MW-8	3/11/2012	0.0112	0.0227	<0.02	0.0333	
MW-8	6/8/2012	<0.001	<0.002	<0.002	<0.003	
MW-8	9/10/2012	0.00086	<0.002	0.00066	0.002	Duplicate Sample Collected
MW-8	12/7/2012	0.00063	<0.002	0.00086	<0.003	Duplicate Sample Collected
MW-8	2/20/2013	0.00045	<0.002	0.0019	0.0022	Duplicate Sample Collected
MW-8	6/2/2013	0.00043	<0.002	0.00098	0.0037	Duplicate Sample Collected
MW-8	9/9/2013	0.00037	<0.002	<0.002	<0.003	Duplicate Sample Collected

Notes:

1.) The environmental cleanup standards for water that are applicable to this Site are the New Mexico Water Quality Control Commission (NMWQCC) Groundwater Standards.

2.) Data presented for the well locations includes previous four sampling events, when available.

**Bold** red values indicate an exceedance of the NMWQCC groundwater standards for the Site.

Sample locations are shown on Figure 2 and analytical results are illustrated on Figure 4.

NS = Not Sampled.

mg/L = milligrams per liter.

\* Monitoring well MW-8 was converted to an Air Sparge Injection point prior to the fourth quarter 2011 groundwater monitoring event. Therefore, groundwater samples were not collected