

LAW OFFICES

HEIDEL, SAMBERSON, COX & McMAHON

C. GENE SAMBERSON
LEWIS C. COX, III
PATRICK B. McMAHON

311 NORTH FIRST STREET
POST OFFICE DRAWER 1599
LOVINGTON, NM 88260
TELEPHONE (575) 396-5303
FAX (575) 396-5305

F.L. HEIDEL
(1913-1985)

April 10, 2017

New Mexico Oil Conservation Division, District 2
Attn Randy Bayliss, District Supervisor
811 S. First
Artesia, New Mexico 88210

Re: Russell Federal 35 SWD Well No. 2 (API 30-015-05891)

Dear Mr. Bayliss,

As per my December 2, 2016 correspondence, please find attached charts for the above referenced well for the time period of December 8, 2016 to March 17, 2017. MNA Enterprises will be submitting the originals to you at the Artesia office shortly and will continue to do so in the future.

If you should have any questions, please do not hesitate to contact our office..

HEIDEL, SAMBERSON, COX & McMAHON

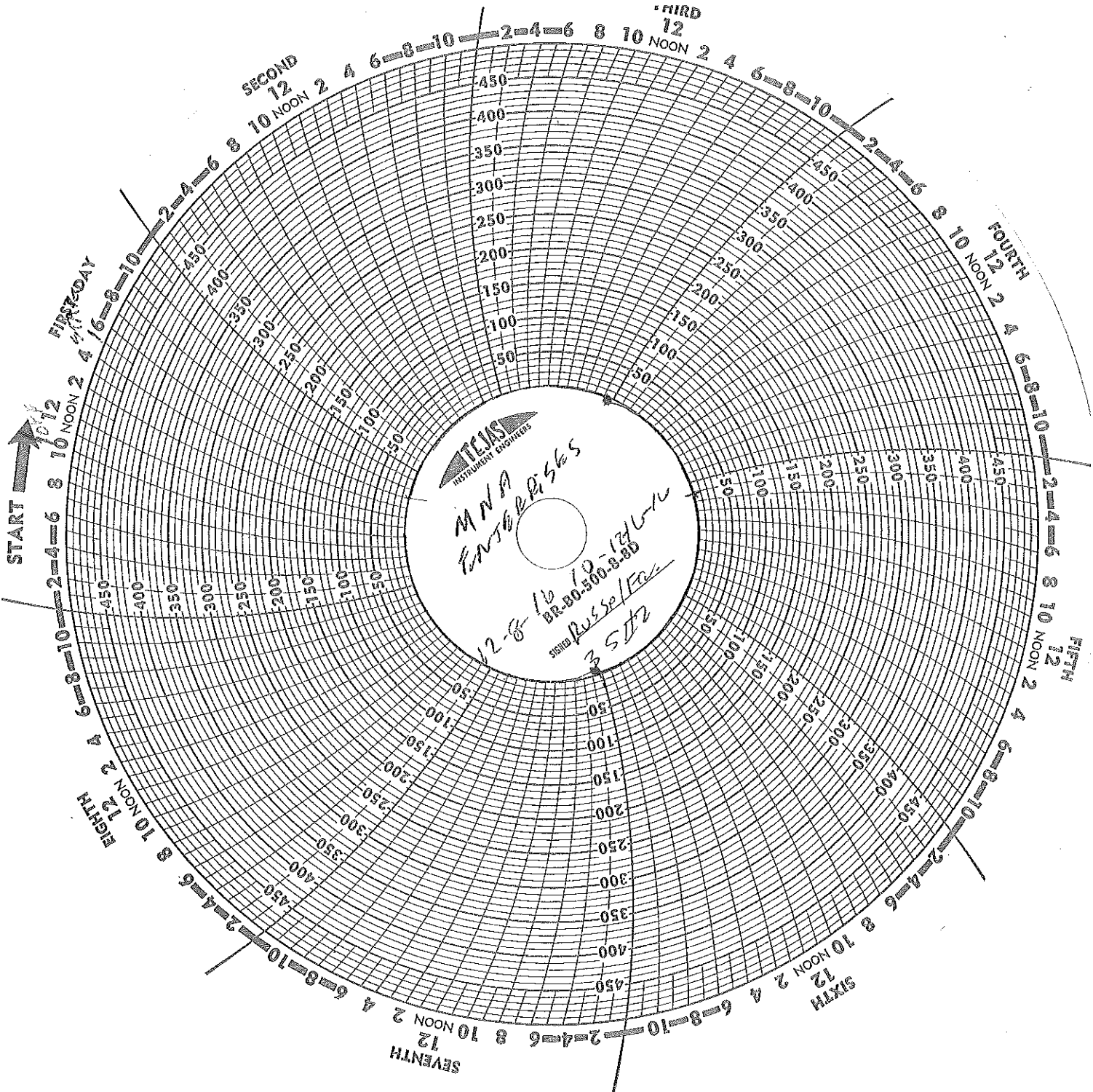
By:

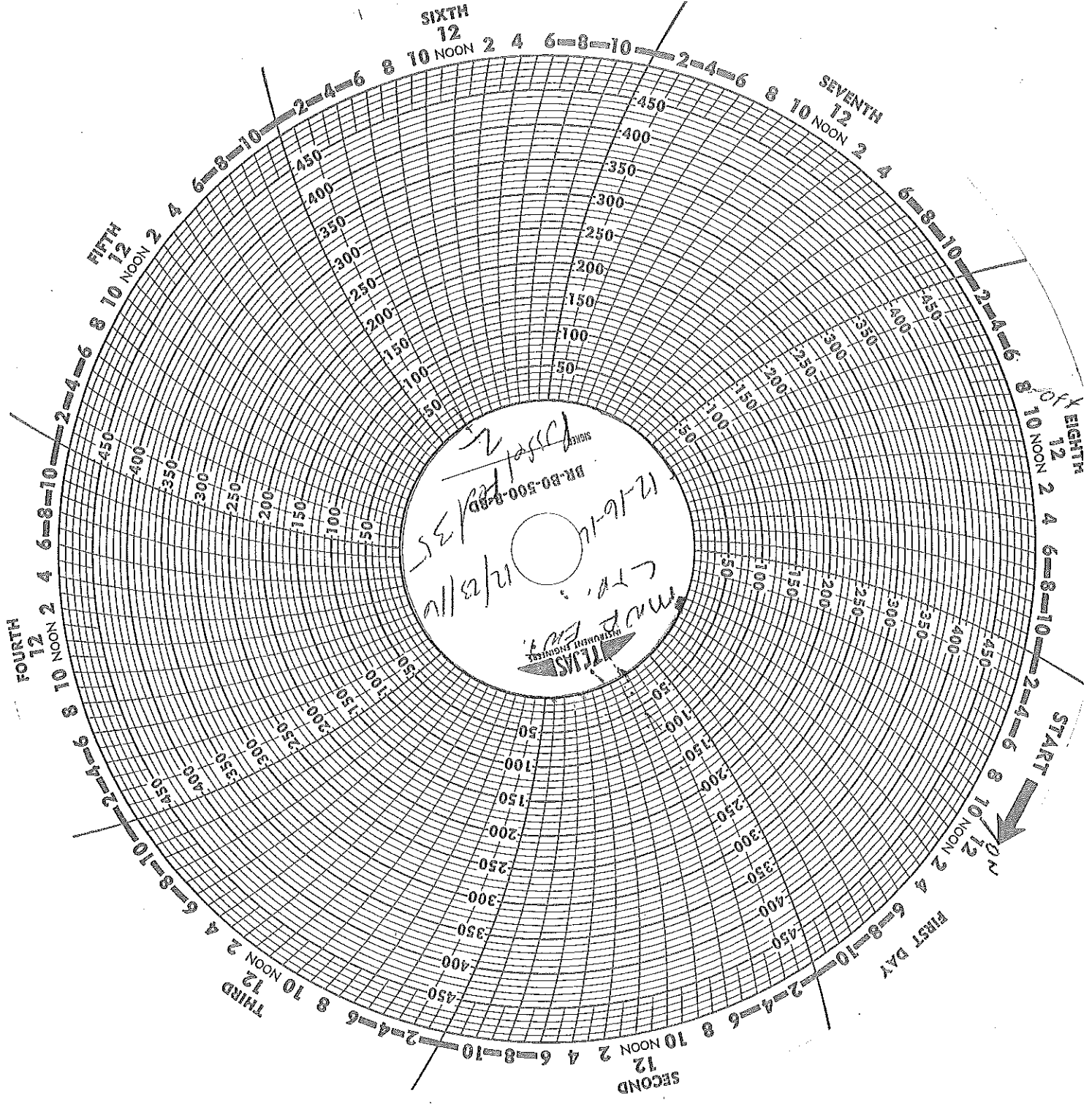

Patrick B. McMahon

PBM:st

Enclosures

cc: Daniel Alexander
Mason Alexander





SIXTH
12

SEVENTH
12

FIFTH
12

EIGHTH
12

FOURTH
12

START

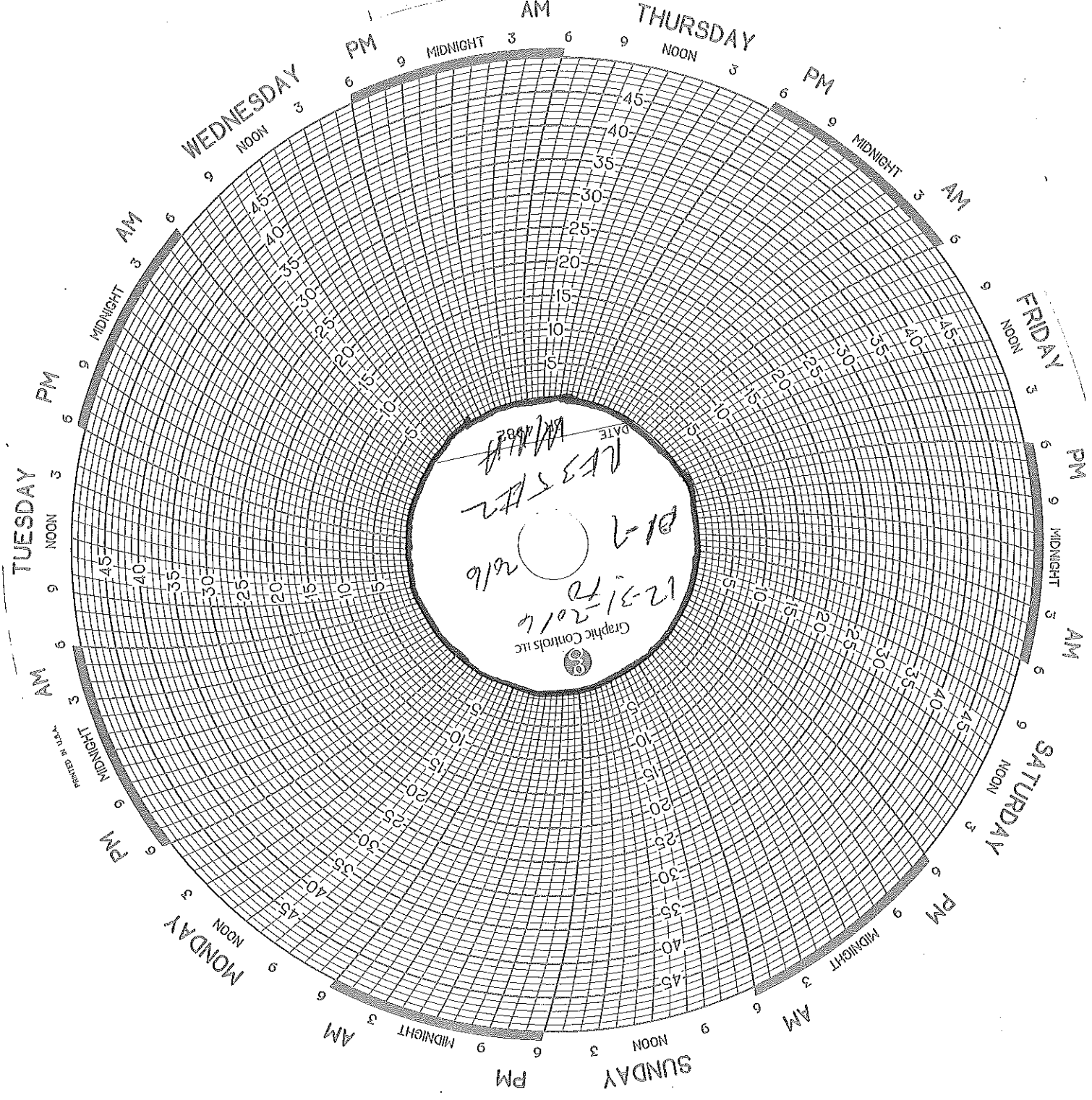
SECOND
12

THIRD
12

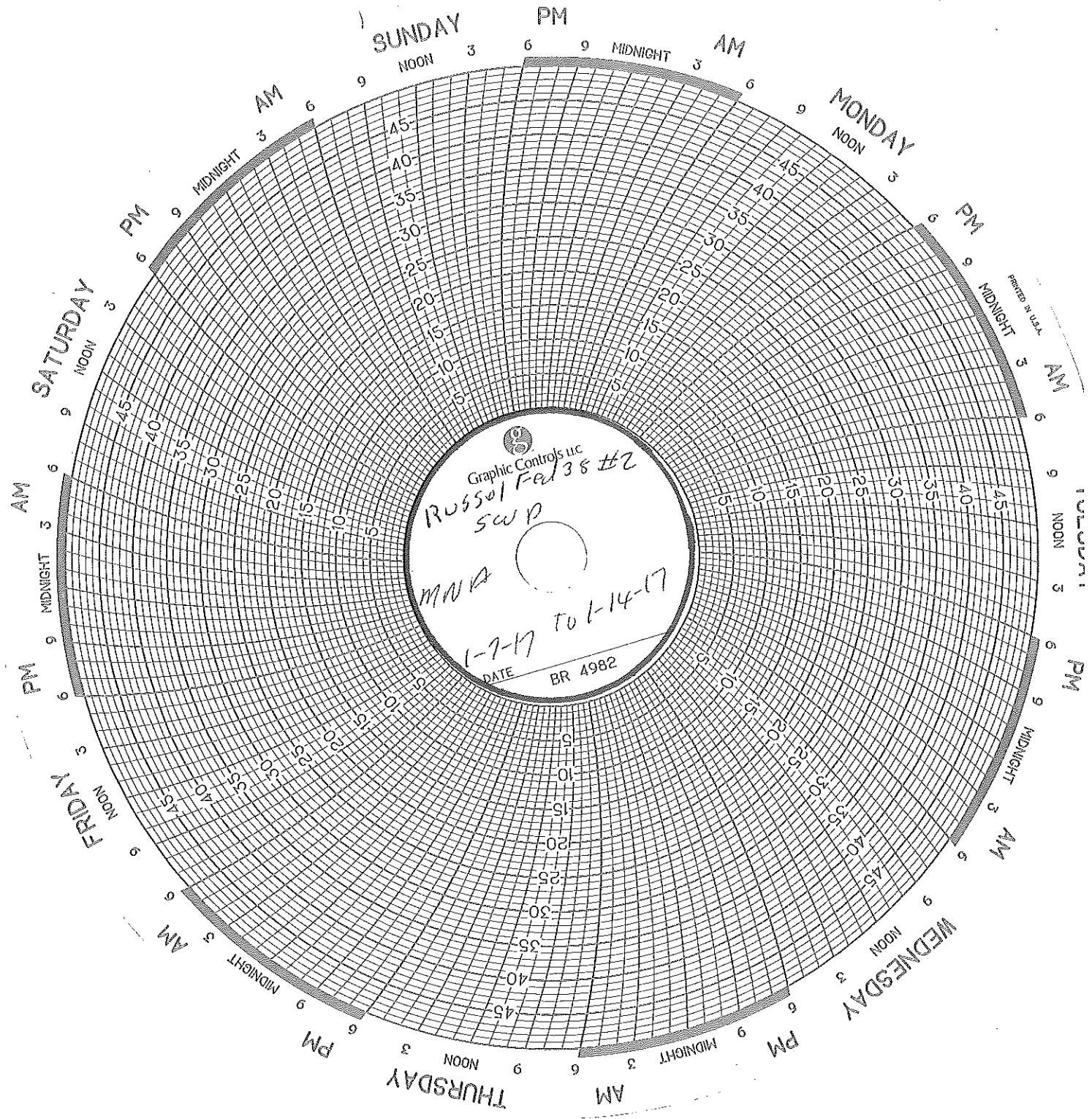
FIRST DAY

12-6-11
11/2/35
BR-80-500-8-BD
MAD
TEAS
MILWAUKEE ENGINEERING





DATE 12/31/2016
12-31-2016
12-31-2016
12-31-2016
Graphic Controls LLC



SUNDAY
NOON 3 6 9 MIDNIGHT 3 AM

MONDAY
NOON 3 6 9

SATURDAY
NOON 3 6 9

FRIDAY
NOON 3 6 9

AM 6 9 MIDNIGHT 3

THURSDAY
NOON 3 6 9

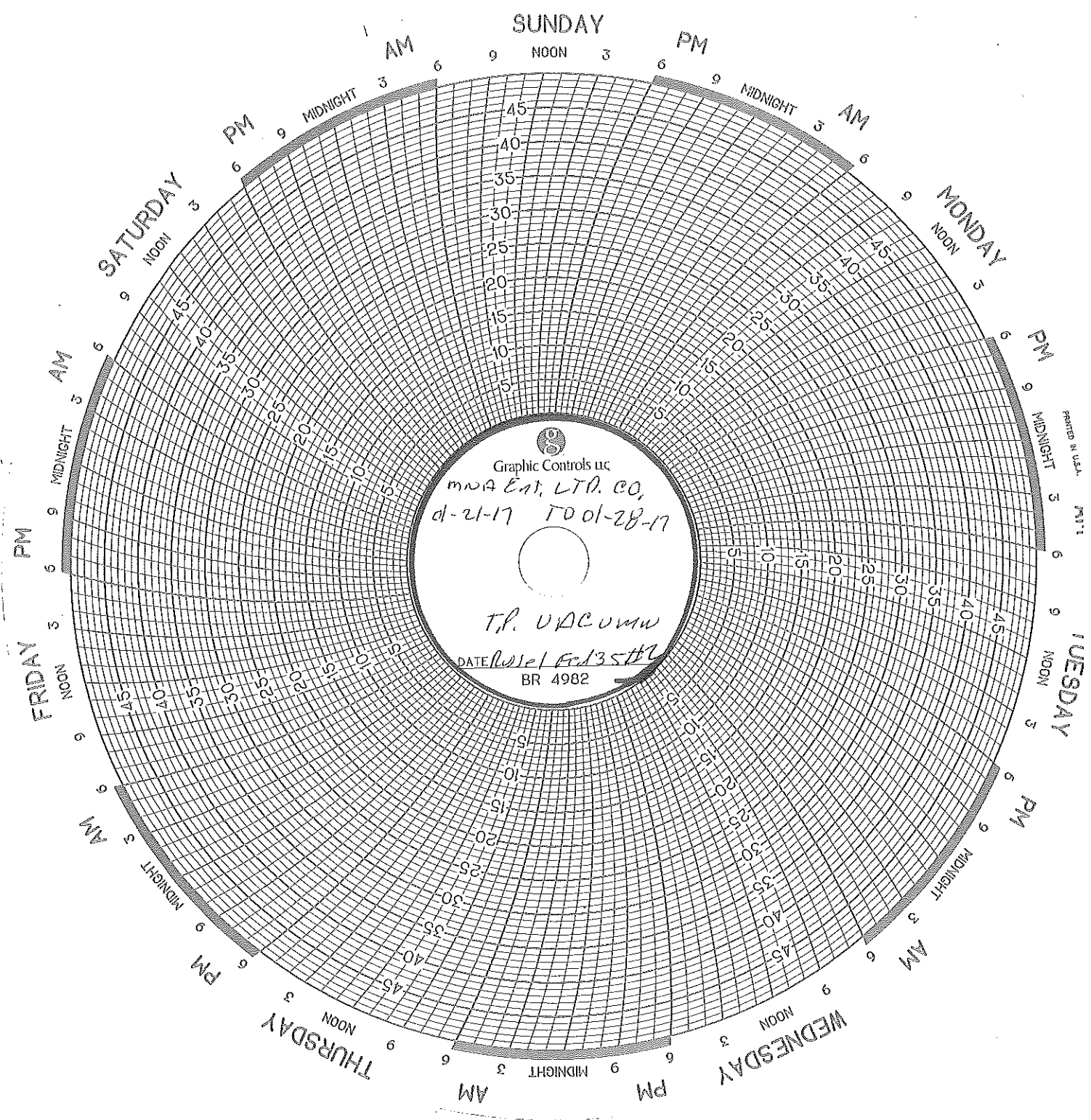
WEDNESDAY
NOON 3 6 9

Graphic Controls Inc
Russell Fe/38 #2
SWP

MNA
1-7-17 to 1-14-17
DATE BR 4982

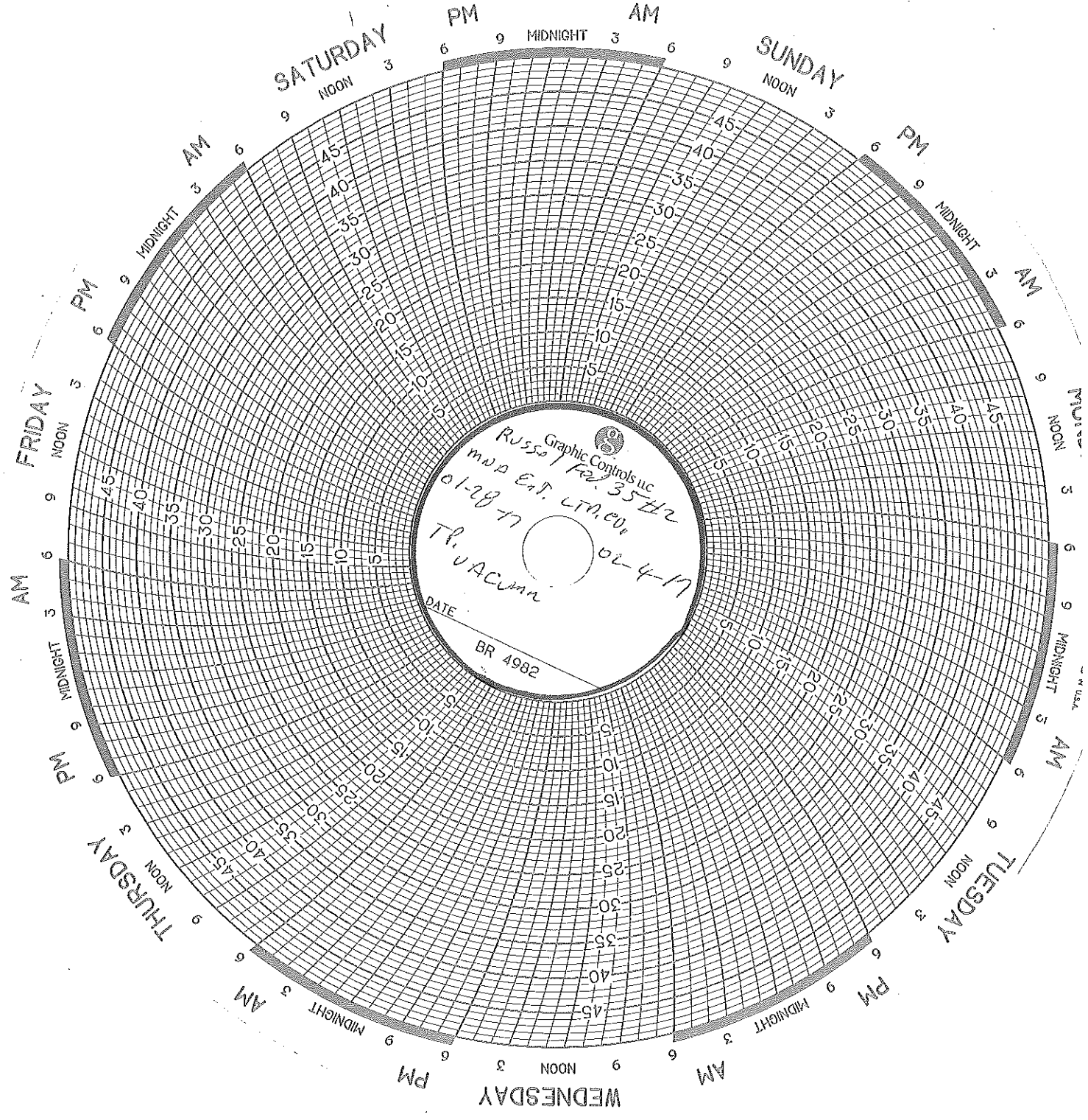
PRINTED IN U.S.A.

AM
NOON 3 6 9
PM

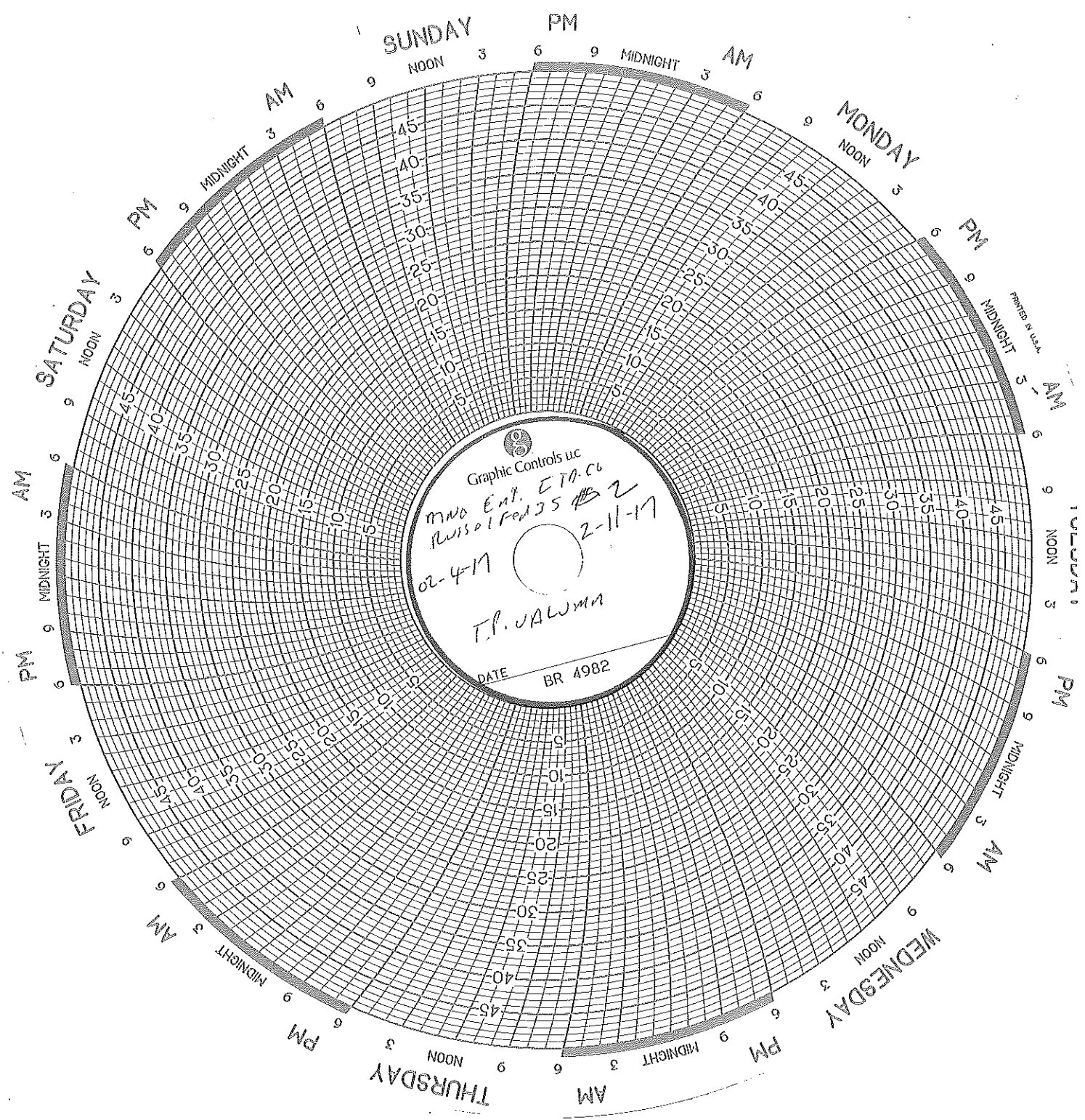


Graphic Controls Inc
mna Ent. LTD. CO.
d-21-17 T001-28-17
T.P. VACUUM
DATE 12/13/82
BR 4982

PRINTED IN U.S.A.
M111



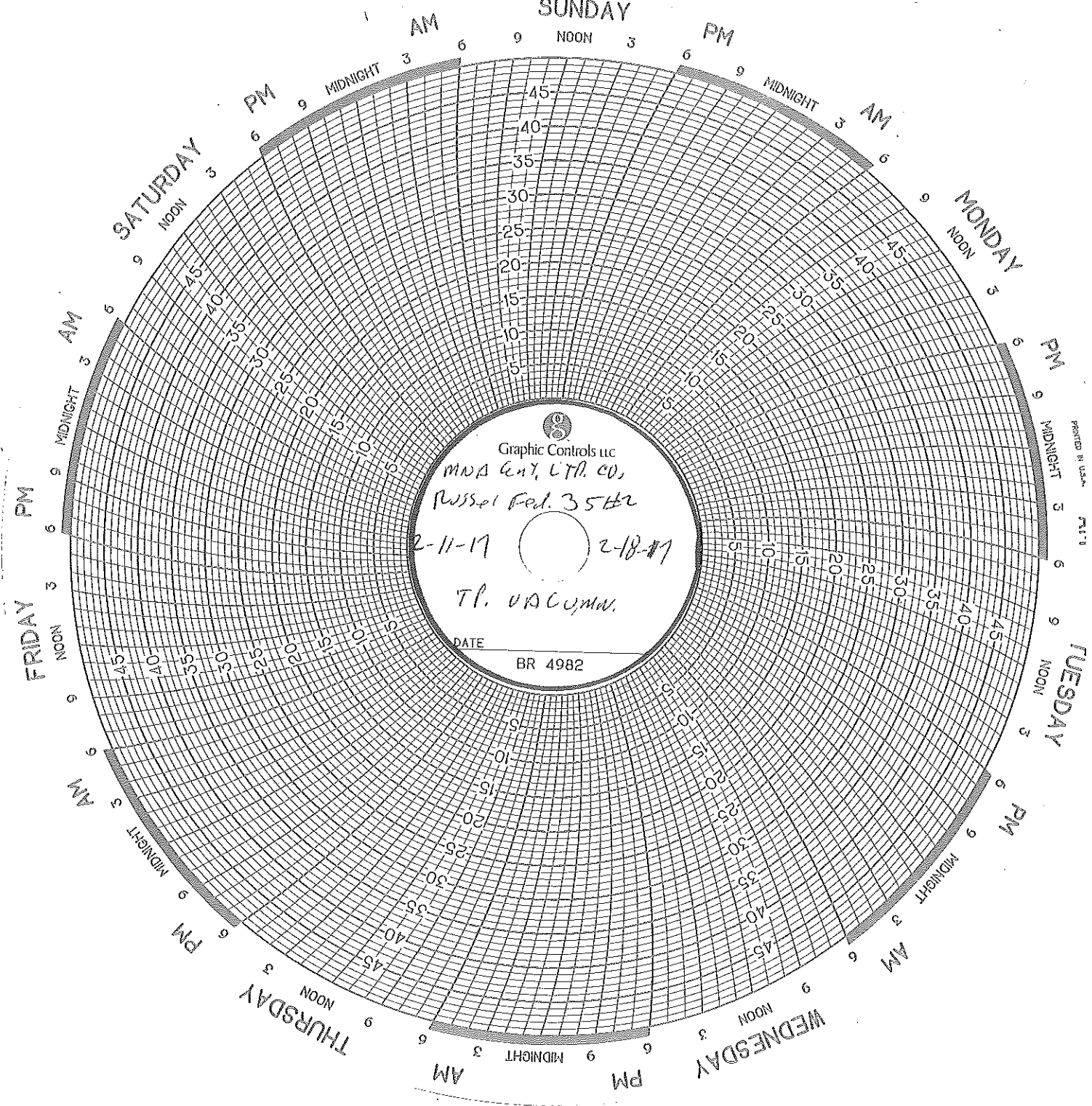
Russ Graphic Controls Inc.
MAD Est. 35 HR
01-28-77
TR. VACUMM
02-4-77
DATE
BR 4982



Graphic Controls Inc

MMA Ent. ETRC
Ruisol Fed 35 B 2
02-4M 2-11-17
T.P. VALUWA

DATE BR 4982



Graphic Controls Inc
MWA Gen. LTR. CO.
Russel Fed. 35 Hz
2-11-17 2-18-17
TR. VACUMM.
DATE
BR 4982

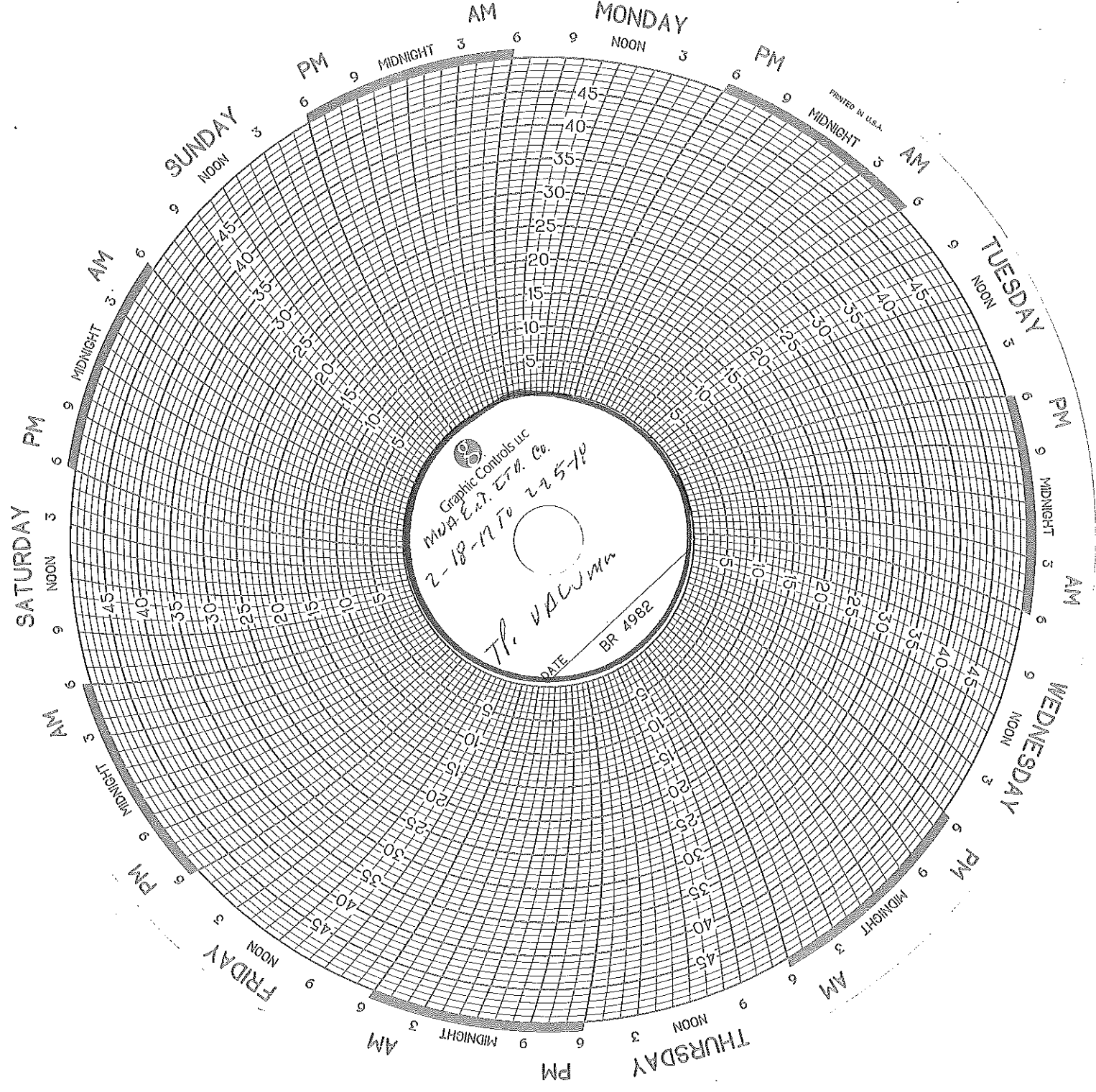
PRINTED IN U.S.A.

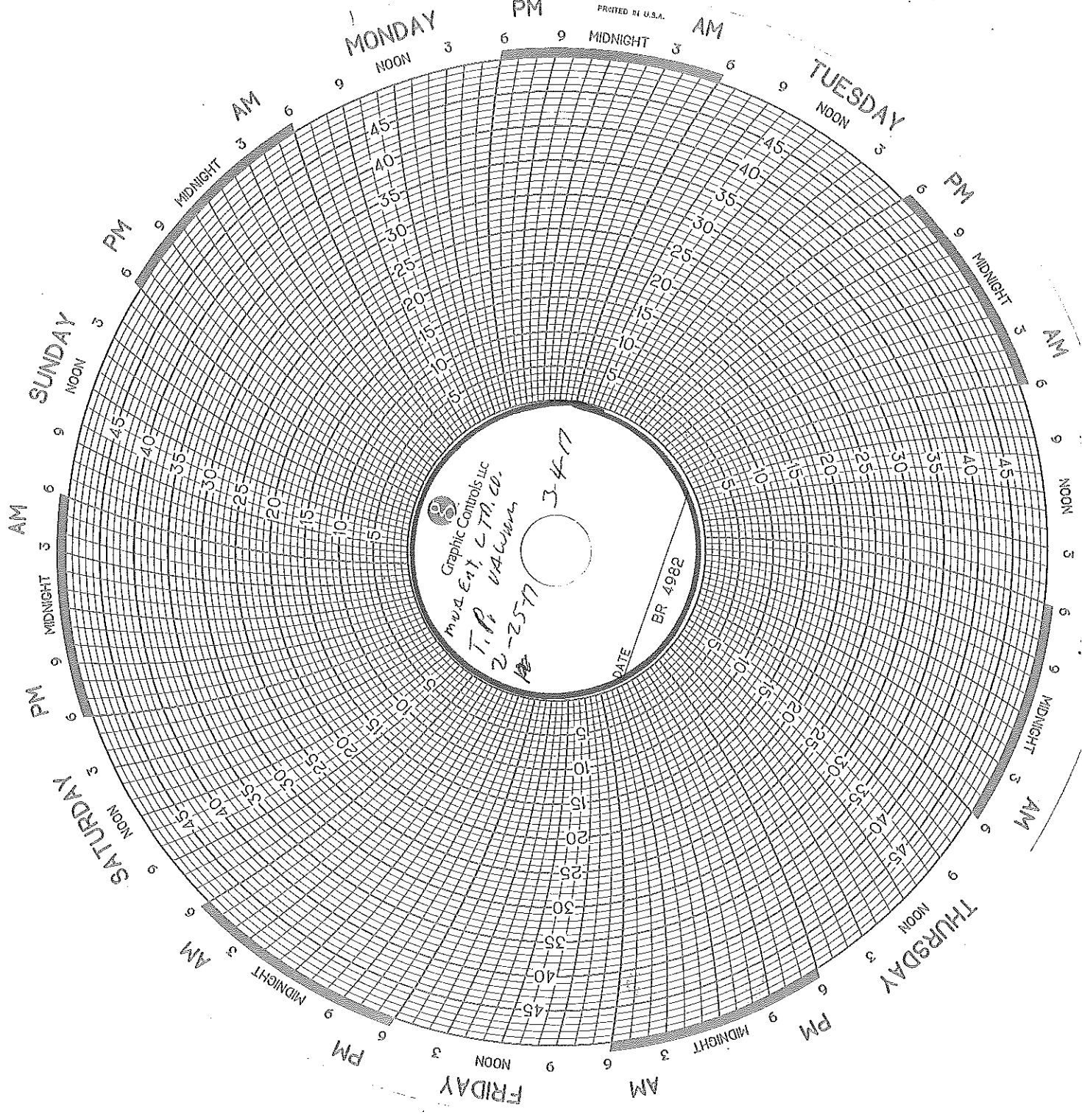
Graphic Controls Inc
MILWAUKEE, WIS. CO.

2-18-1970 225-10

TR. VALWMM

DATE BR 4982



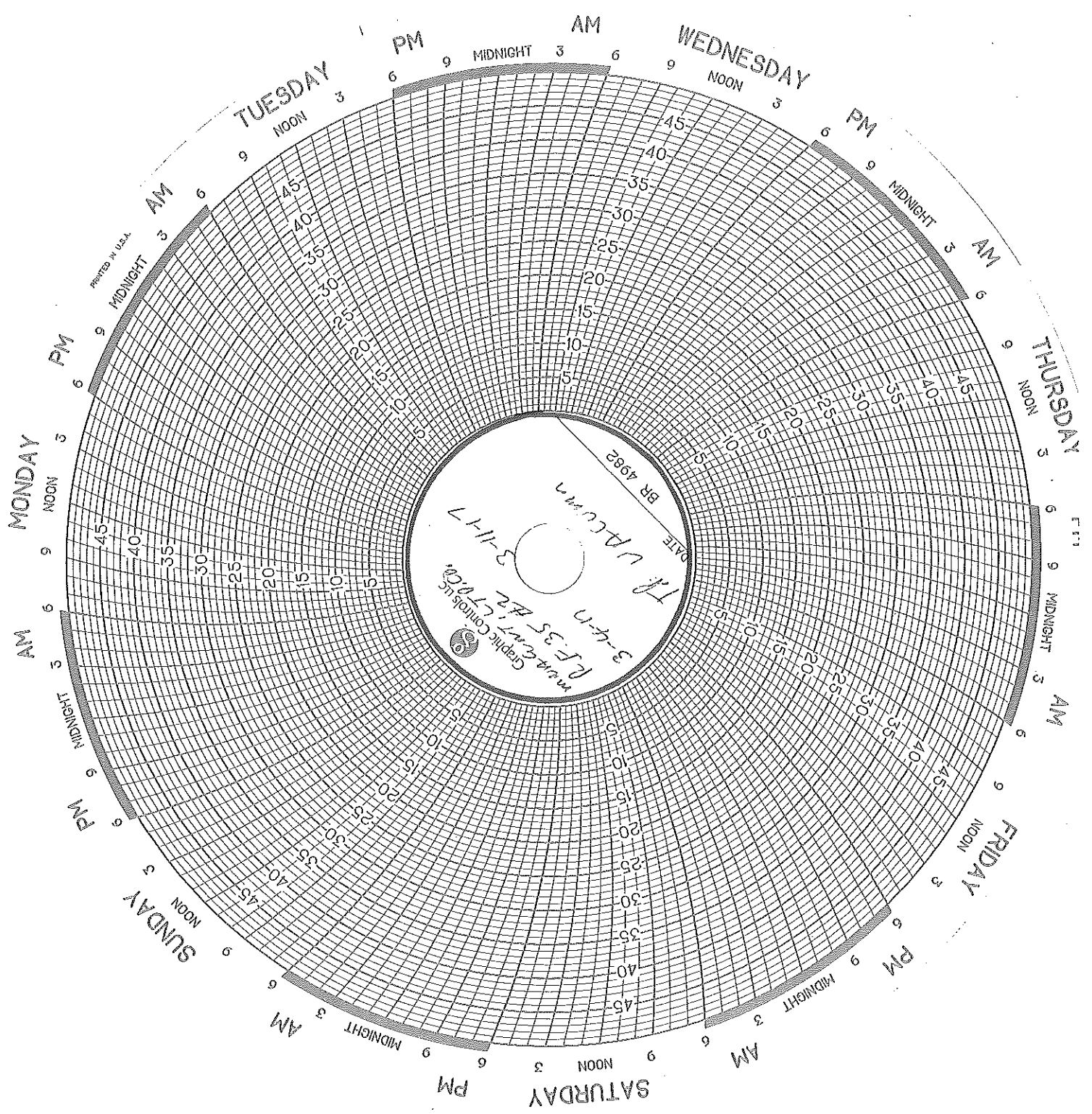


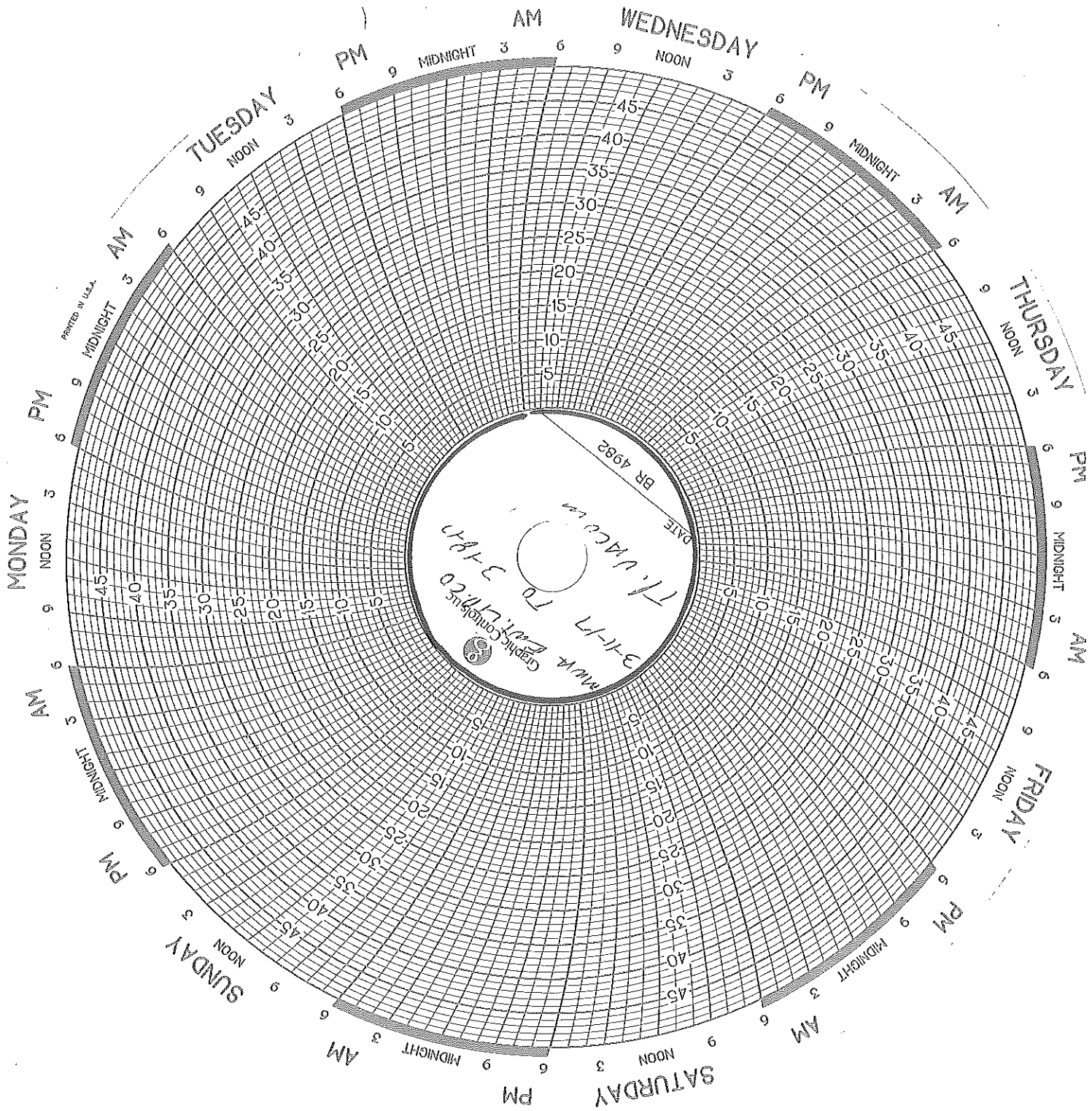
Graphic Controls LLC
 m.v.d. ENT., L.P., CO.
 T.P. VALUERS
 2-2577

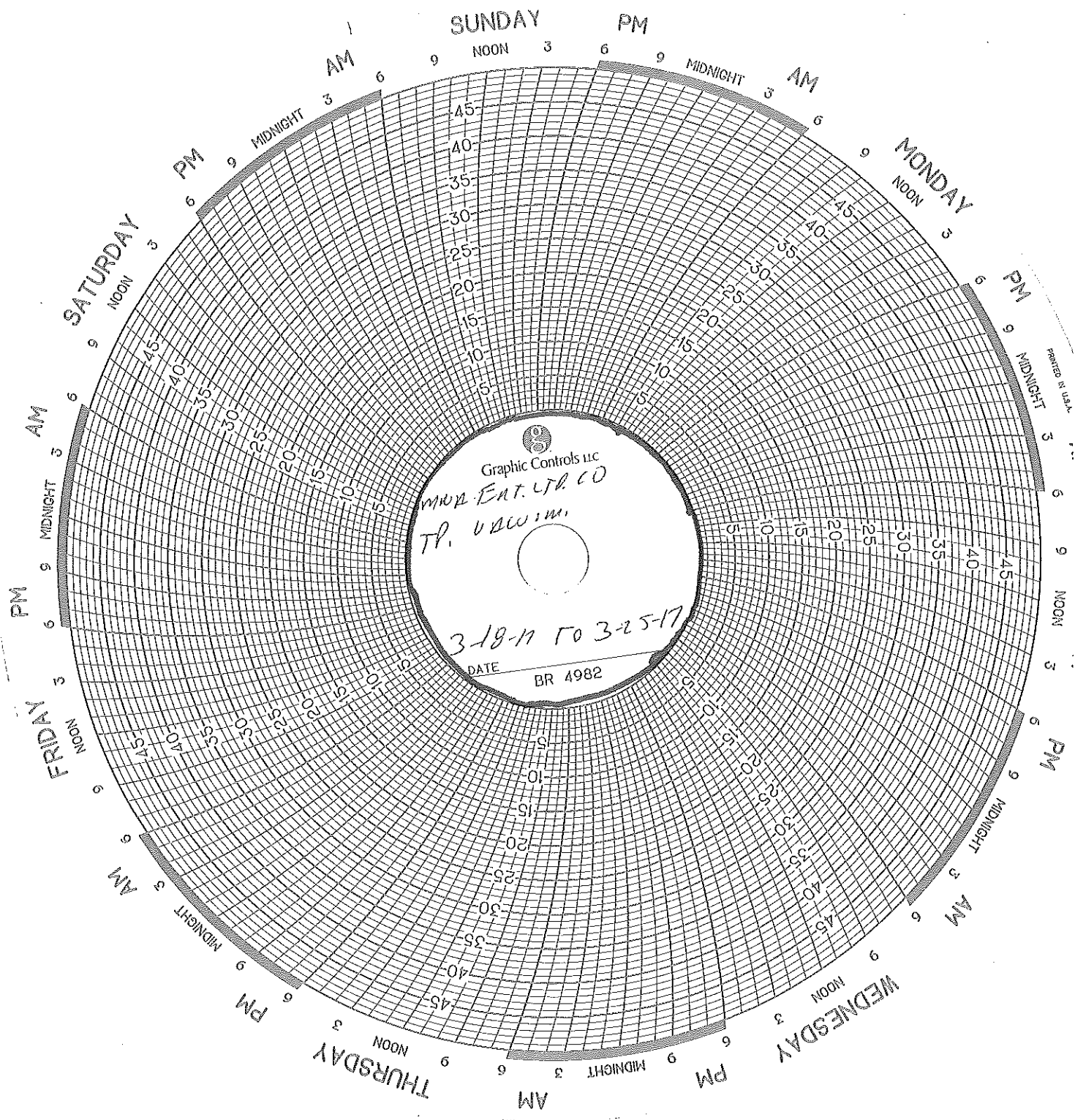
34-17

BR 4982

DATE







Graphic Controls Inc

MMP ENT. LTD CO
TP. UBCOM

3-18-11 to 3-25-17

DATE BR 4982

PRINTED IN U.S.A.