

RECEIVED: 3/21/2018	REVIEWER: MAM	TYPE:	APP NO: DMAH1808139394
-------------------------------	-------------------------	-------	----------------------------------

ABOVE THIS TABLE FOR OCD DIVISION USE ONLY

NEW MEXICO OIL CONSERVATION DIVISION
 - Geological & Engineering Bureau -
 1220 South St. Francis Drive, Santa Fe, NM 87505



ADMINISTRATIVE APPLICATION CHECKLIST

THIS CHECKLIST IS MANDATORY FOR ALL ADMINISTRATIVE APPLICATIONS FOR EXCEPTIONS TO DIVISION RULES AND REGULATIONS WHICH REQUIRE PROCESSING AT THE DIVISION LEVEL IN SANTA FE

Applicant: <u>Matador Production Company</u>	OGRID Number: <u>228937</u>
Well Name: <u>Leo Thorsness 13-24S-33E AR 211H , Strong 14-23S-33E AR 214H</u>	API: <u>30-025-43532 & API No. 30-025-44442</u>
Pool: <u>Upper Wolfcamp Pool</u>	Pool Code: <u>98135</u>

SUBMIT ACCURATE AND COMPLETE INFORMATION REQUIRED TO PROCESS THE TYPE OF APPLICATION INDICATED BELOW

CTB 854

- 1) **TYPE OF APPLICATION:** Check those which apply for [A]
 A. Location – Spacing Unit – Simultaneous Dedication
 NSL NSP (PROJECT AREA) NSP (PRORATION UNIT) SD

- B. Check one only for [I] or [II]
 [I] Commingling – Storage – Measurement
 DHC CTB PLC PC OLS OLM
 [II] Injection – Disposal – Pressure Increase – Enhanced Oil Recovery
 WFX PMX SWD IPI EOR PPR

FOR OCD ONLY	
<input type="checkbox"/>	Notice Complete
<input type="checkbox"/>	Application Content Complete

- 2) **NOTIFICATION REQUIRED TO:** Check those which apply.
 A. Offset operators or lease holders
 B. Royalty, overriding royalty owners, revenue owners
 C. Application requires published notice
 D. Notification and/or concurrent approval by SLO
 E. Notification and/or concurrent approval by BLM
 F. Surface owner
 G. For all of the above, proof of notification or publication is attached, and/or,
 H. No notice required

3) **CERTIFICATION:** I hereby certify that the information submitted with this application for administrative approval is **accurate** and **complete** to the best of my knowledge. I also understand that **no action** will be taken on this application until the required information and notifications are submitted to the Division.

Note: Statement must be completed by an individual with managerial and/or supervisory capacity.

Michael H. Feldewert

Print or Type Name

Signature

March 21, 2018
Date

505-988-4421
Phone Number

mfeldewert@hollandhart.com
e-mail Address

District I
1625 N French Drive, Hobbs, NM 88240
District II
811 S First St., Artesia, NM 88210
District III
1000 Rio Brazos Road, Aztec, NM 87410
District IV
1220 S St Francis Dr, Santa Fe, NM
87505

State of New Mexico
Energy, Minerals and Natural Resources Department

Form C-107-B
Revised August 1, 2011

OIL CONSERVATION DIVISION
1220 S. St Francis Drive
Santa Fe, New Mexico 87505

Submit the original application to the Santa Fe office with one copy to the appropriate District Office.

APPLICATION FOR SURFACE COMMINGLING (DIVERSE OWNERSHIP)

OPERATOR NAME: Matador Production Company
OPERATOR ADDRESS: 5400 LBJ Freeway Tower 1 Suite 1500 Dallas, TX 75240
APPLICATION TYPE:

Pool Commingling Lease Commingling Pool and Lease Commingling Off-Lease Storage and Measurement (Only if not Surface Commingled)

LEASE TYPE: Fee State Federal

Is this an Amendment to existing Order? Yes No If "Yes", please include the appropriate Order No. _____
Have the Bureau of Land Management (BLM) and State Land office (SLO) been notified in writing of the proposed commingling
 Yes No

(A) POOL COMMINGLING
Please attach sheets with the following information

(1) Pool Names and Codes	Gravities / BTU of Non-Commingled Production	Calculated Gravities / BTU of Commingled Production		Calculated Value of Commingled Production	Volumes

(2) Are any wells producing at top allowables? Yes No
(3) Has all interest owners been notified by certified mail of the proposed commingling? Yes No.
(4) Measurement type: Metering Other (Specify)
(5) Will commingling decrease the value of production? Yes No If "yes", describe why commingling should be approved

(B) LEASE COMMINGLING

Please attach sheets with the following information

(1) Pool Name and Code- WC-025 G-09 S243310P; Upper Wolfcamp Code: 98135
(2) Is all production from same source of supply? Yes No
(3) Has all interest owners been notified by certified mail of the proposed commingling? Yes No
(4) Measurement type: Metering Other (Specify)

(C) POOL and LEASE COMMINGLING

Please attach sheets with the following information

(1) Complete Sections A and B.

(D) OFF-LEASE STORAGE and MEASUREMENT

Please attached sheets with the following information

(1) Is all production from same source of supply? Yes No
(2) Include proof of notice to all interest owners.

(E) ADDITIONAL INFORMATION (for all application types)

Please attach sheets with the following information

(1) A schematic diagram of facility, including legal location.
(2) A plat with lease boundaries showing all well and facility locations. Include lease numbers if Federal or State lands are involved.
(3) Lease Names, Lease and Well Numbers, and API Numbers.

I hereby certify that the information above is true and complete to the best of my knowledge and belief.

SIGNATURE: Ben Peterson TITLE: Senior Production Engineer DATE: 3-6-18

TYPE OR PRINT NAME Ben Peterson TELEPHONE NO.: (972) 371-5427

F-MAIL ADDRESS: bpeterson@matadorresources.com



Matador Production Company

One Lincoln Centre • 5400 LBJ Freeway • Suite 1500 • Dallas, Texas 75240
Voice 972.371.5427 • Fax 972.371.5201
bpeterson@matadorresources.com

Benjamin D. Peterson, P.E.
Senior Production Engineer

March 6, 2018

New Mexico Oil Conservation Division
1220 South St. Francis Drive
Santa Fe, NM 87505

Re: Application of Matador Production Company for administrative approval for off-lease measurement and approval to surface commingle (lease commingle) oil and gas production from the spacing units comprised of the E/4 of Section 14 and the W/4 of Section 13, Township 24 South, Range 33 East, NMPM, Eddy County, New Mexico (the “Lands”)

To Whom This May Concern,

Matador Production Company (“Matador”), OGRID: 228937, requests to commingle current oil and gas production from two (2) distinct wells located on the Lands and future production from the Lands as described herein. Both wells will be metered through a test separator with an oil turbine meter and gas orifice meter. The gas commingling will occur after individual measurement at each well. Gas exiting each well test flows into one gathering line, as depicted on **Exhibit A**, the Agave Gathering line. Each well on the Lands will have its own test separator with an orifice meter manufactured and assembled in accordance with American Gas Association (AGA) specifications. All primary and secondary Electronic Flow Measurement (EFM) equipment is tested and calibrated by a reputable third party measurement company in accordance with industry specifications.

The orifice meter is the preferred measurement device utilized by midstream and E&P companies in natural gas measurement. The gas samples are obtained at the time of the meter testing/calibration and the composition and heating value are determined by a laboratory in accordance with American Petroleum Institute (API) specifications to ensure accurate volume and Energy (MMBTU) determinations. See example from Fesco Laboratory attached as **Exhibit B** hereto.

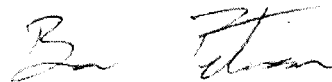
The flow stream from each wellhead is demonstrated in the Process Flow Diagram (PFD) attached as **Exhibit A** hereto. The PFD shows that the water, oil, and gas leave the wellbore and flow into a wellhead test separator which separates the oil, gas, and water. The oil is measured via turbine meter which is calibrated periodically by a third party measurement company for accuracy. The gas is measured on a volume and MMBTU basis by an orifice meter and supporting EFM equipment in accordance with American Petroleum Institute (API) Chapter 21.1. The gas is then

sent into a gathering line where it is commingled with each of the other wells' metered gas. The gathering line gas is then metered by another orifice meter at the tank battery check to show the total volume of gas leaving the Tank Battery. This meter is tested and calibrated in accordance with industry specifications and volume and energy are determined on an hourly, daily, and monthly basis. Once the gas exits this final tank battery sales check it travels directly into a third party sales connect meter. Agave has its own orifice meter that measures the gas for custody transfer. These meters are also calibrated periodically to ensure the measurement accuracy.

In conclusion, all the oil and gas produced on the Lands is and will be metered at each wellhead and allocated correctly using the same measurement equipment as the pipeline sales measurement specifications accepted by API as industry standard.

Very truly yours,

MATADOR PRODUCTION COMPANY

A handwritten signature in black ink, appearing to read "Ben Peterson". The signature is written in a cursive style with a large initial "B" and a long horizontal stroke extending to the right.

Benjamin D. Peterson, P.E.
Sr. Production Engineer



March 21, 2018

VIA HAND DELIVERY

MAR 21 2018 PM03:43

Heather Riley
Oil Conservation Division
New Mexico Department of Energy,
Minerals and Natural Resources
1220 South Saint Francis Drive
Santa Fe, New Mexico 87505

Re: Application of Matador Production Company to authorize off-lease storage and off-lease marketing at the Leo Thorsness Tank Battery located in the NW/4 NW/4 (Unit D) of Section 13, Township 24 South, Range 33 East, NMPM, Lea County, New Mexico.

Dear Ms. Riley:

Under NMAC 19.15.12.7, individual spacing and proration units are considered separate "leases" for surface commingling purposes. Accordingly, Matador Production Company (OGRID No. 228937) seeks administrative approval for off-lease storage and off-lease marketing at the Leo Thorsness Tank Battery of production from the WC-025 G-09 S243310P; Upper Wolfcamp Pool (98135) produced from *all existing and future wells* drilled in the following "leases:"

- (a) The 160-acre spacing and proration unit comprised of the W/2 W/2 of Section 3, which is currently dedicated to the Leo Thorsness 13-24S-33E AR 211H (API No. 30-025-43532);
- (b) The 160-acre spacing and proration unit comprised of the E/2 E/2 of Section 14, which is currently dedicated to the Strong 14-23S-33E AR 214H (API No. 30-025-44442); and
- (c) Pursuant to NMAC 19.15.12.10.C(4)(g), in *future spacing and proration units connected to this central tank battery* with notice provided only to the interest owners within these future "leases."

Oil and gas production from these "leases" will be commingled and sold at the Leo Thorsness Tank Battery located in the NW/4 NW/4 (Unit D) of Section 13. Prior to commingling, gas production from each "lease" will be separately metered using individual test separators with calibrated orifice meters that are manufactured to AGA specifications. Oil production from each "lease" will also be separately metered using turbine meters.



Exhibit 1 is a land plat showing Matador's current development plan, the flow lines, central tank batter ("production facility") and gathering system in the subject area;

Exhibit 2 contains the C-102s for each well currently planned or drilled for the subject leases along with any available six-month production reports.

Exhibit 3 contains a completed Application for Surface Commingling (Diverse Ownership) Form C-107-B that includes a statement from Benjamin D. Peterson, P.E. identifying the facilities and the measurement devices to be utilized, a detailed schematic of the surface facilities (attachment A to the statement) and a referenced gas sample (attachment B to the statement).

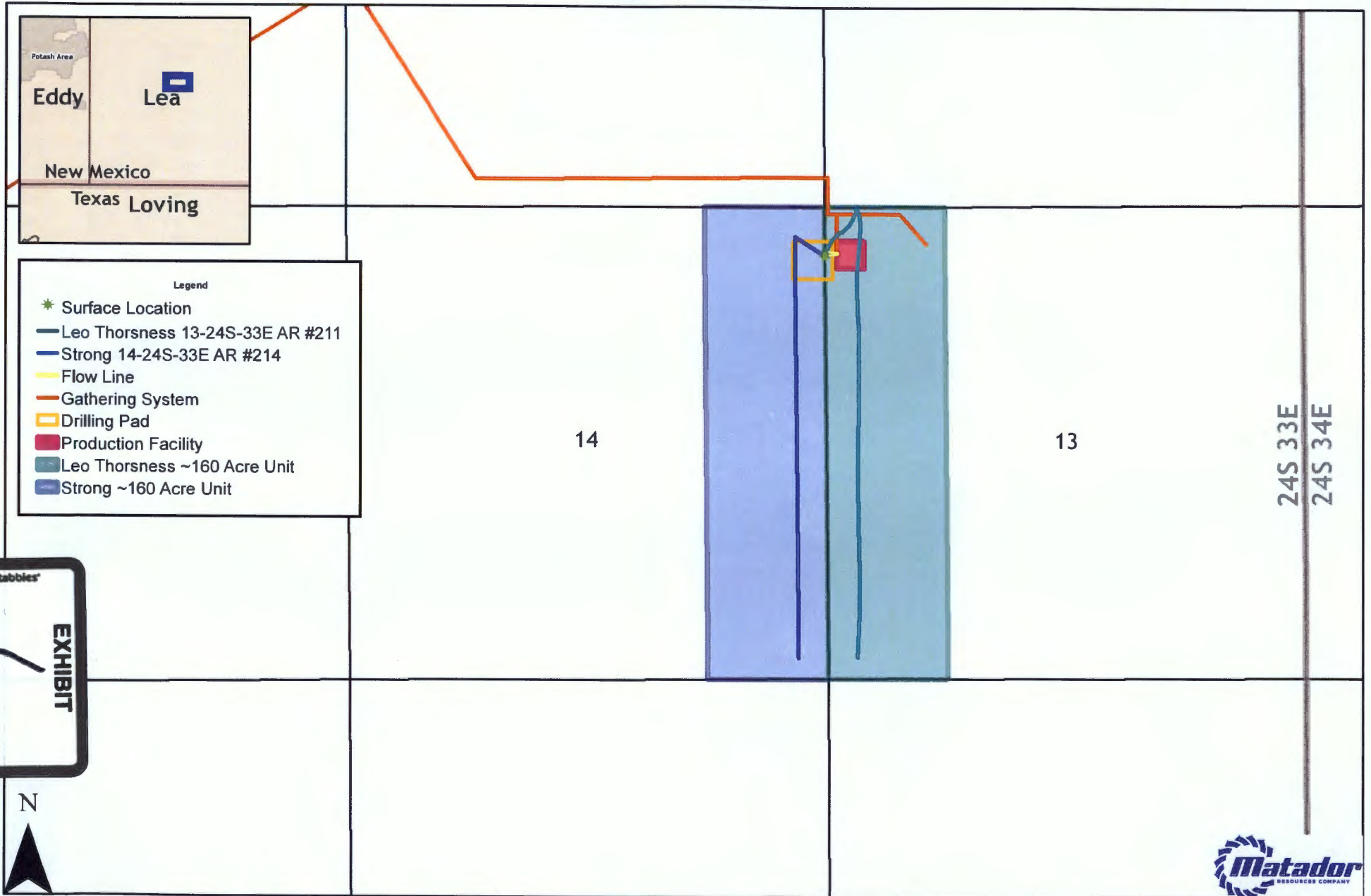
Exhibit 4 is a list of all mineral owners (including owners of royalty and overriding royalty interests) affected by this application, a copy of the letters sent by certified mail advising them that if they have an objection it must file it in writing with the division within 20 days from the date the Division receives this application, and proof of mailing.

Thank you for your attention to this matter and please feel free to call if you have any questions and require additional information.

Sincerely,

Michael H. Feldewert
**ATTORNEY FOR MATADOR PRODUCTION
COMPANY**

Strong / Leo Thorsness Land Plat

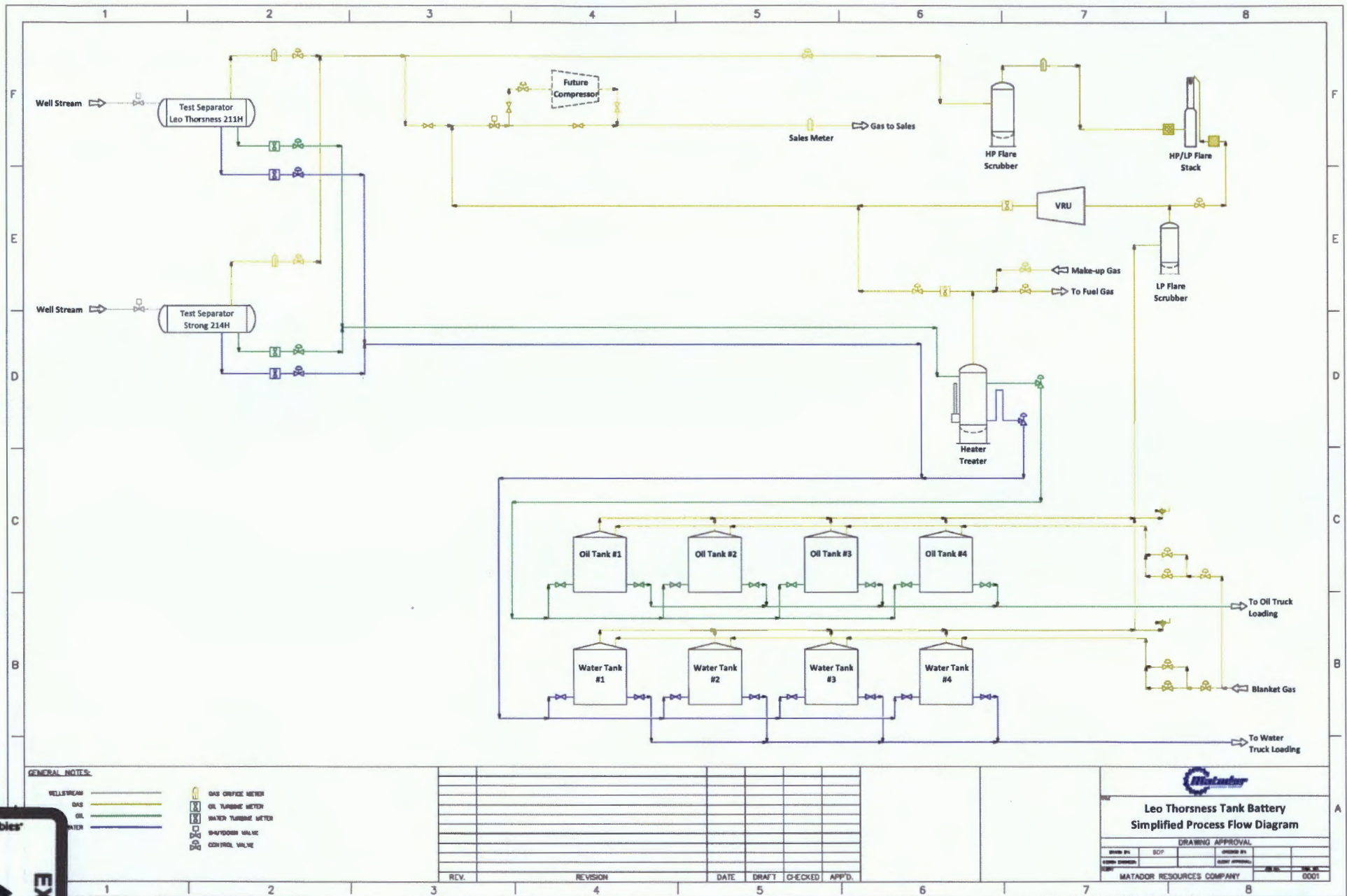


Southeast New Mexico

Date: February 28, 2018
 Filename: ComminglingLandPlat_StrongThorsness
 Projection: NAD27 State Plane New Mexico East FIPS 3001
 Sources: IHS; ESRI;



0 750 1,500 3,000 Feet



GENERAL NOTES:

- WELLSTREAM YELLOW LINE
- GAS GREEN LINE
- OIL BLUE LINE
- WATER PURPLE LINE
- GAS ORIFICE METER
- OIL TURBINE METER
- WATER TURBINE METER
- SHUT-DOWN VALVE
- CONTROL VALVE

REV.	REVISION	DATE	DRAFT	CHECKED	APP'D.

**Leo Thorsness Tank Battery
Simplified Process Flow Diagram**

DRAWING APPROVAL

DRAWN BY:	SOP	CHECKED BY:	
DATE:		DATE:	
MATADOR RESOURCES COMPANY		JOB NO.	0001



District I
1677 N. Francis Dr., Hobbs, NM 88240
Phone: (505) 493-6161 Fax: (505) 493-0729

District II
801 S. First St., Artesia, NM 88210
Phone: (505) 748-1283 Fax: (505) 743-9720

District III
1000 Red Boon Road, Aztec, NM 87410
Phone: (505) 333-6178 Fax: (505) 333-6190

District IV
1720 N. St. Francis Dr., Santa Fe, NM 87505
Phone: (505) 476-3460 Fax: (505) 476-3462

State of New Mexico
Energy, Minerals & Natural Resources
Department
OIL CONSERVATION DIVISION
1220 South St. Francis Dr.
Santa Fe, NM 87505

FORM C-102
Revised August 1, 2011
Submit one copy to appropriate
District Office
AMENDED REPORT

HOBBS OCD

NOV 14 2017

RECEIVED

WELL LOCATION AND ACREAGE DEDICATION PLAT

API Number 30-025 43532		Pool Code 98135	Pool Name WC-025 G-09 S243310P, UPPER WOLFCAMP
Property Code 32281 320069	Property Name LEO THORSNESS 13-24S-33E AR		Well Number #211H
OCRID No. 228937	Operator Name MATADOR PRODUCTION COMPANY		Elevation 3602'

10 Surface Location

U/I or lot no.	Section	Township	Range	Lot Idn	Feet from the	North/South line	Feet from the	East/West line	County
D	13	24-S	33-E	-	539'	NORTH	25'	WEST	LEA

U/I or lot no.	Section	Township	Range	Lot Idn	Feet from the	North/South line	Feet from the	East/West line	County
M	13	24-S	33-E	-	240'	SOUTH	330'	WEST	LEA

Dedicated Acres 160	Joint or Infill	Consolidation Code	Order No.
------------------------	-----------------	--------------------	-----------

No allowable will be assigned to this completion until all interests have been consolidated or a non-standard unit has been approved by the division.

FIRST PERFORATION POINT
NEW MEXICO EAST
NAD 1927
X=747480
Y=448067
LAT. N 32.2238212
LONG. W 103.5330584
NAD 1983
X=788664
Y=446126
LAT. N 32.2239452
LONG. W 103.5335356

SURFACE LOCATION
NEW MEXICO EAST
NAD 1927
X=747177
Y=445856
LAT. N 32.2232488
LONG. W 103.5340439
NAD 1983
X=788361
Y=445915
LAT. N 32.2233728
LONG. W 103.5345211

LAST PERFORATION POINT
NEW MEXICO EAST
NAD 1927
X=747516
Y=441456
LAT. N 32.2111457
LONG. W 103.5330513
NAD 1983
X=788701
Y=441515
LAT. N 32.2112698
LONG. W 103.5335277

BOTTOM HOLE LOCATION
NEW MEXICO EAST
NAD 1927
X=747517
Y=441366
LAT. N 32.2108983
LONG. W 103.5330512
NAD 1983
X=788702
Y=441425
LAT. N 32.2110224
LONG. W 103.5335276

OPERATOR CERTIFICATION
I hereby certify that the information contained herein is true and correct to the best of my knowledge and belief and that this information reflects the working interest or undivided mineral interest in the land described. The completion of this well location is not a matter of title and that the well location information is consistent with the mineral interest's interest in the land described. I am a duly qualified and licensed geologist in the State of New Mexico.

Chris Carleton 11/15/17
Signature Date

Chris Carleton
Printed Name
ccarleton@matadorresources.com
E-mail Address

SURVEYOR CERTIFICATION
I hereby certify that the well location shown on this plat was plotted from field notes of a trial survey made by me or under my supervision and that the same is true to the best of my belief.

07/08/2016
Date of Survey
Signature and Seal of Professional Surveyor

MICHAEL B. BROWN
NEW MEXICO
18329
PROFESSIONAL SURVEYOR

Certificate Number

C:\S\H\K\KATA\ALSO\441\CONCORD\RES\THORSNESS\THORSNESS_13-24S-33E_AR_211H_025-1003-11-10-2017_158-11-04.dwg

EXHIBIT
2

Form 102
 State of New Mexico
 Energy, Minerals & Natural Resources
 Department
 OIL CONSERVATION DIVISION
 1220 South St. Francis Dr
 Santa Fe, NM 87505

State of New Mexico
 Energy, Minerals & Natural Resources
 Department
OIL CONSERVATION DIVISION
 1220 South St. Francis Dr
 Santa Fe, NM 87505

FORM C-102
 Revised August 1, 2011
 Submit one copy to appropriate
 District Office

AMENDED REPORT

WELL LOCATION AND ACREAGE DEDICATION PLAT

API Number 30-025-44442	Block Code 99115	Field Name W. 079 G 09 S 24 33 10 P UPPER WOLF CAMP
Property Code 320710	Property Name STRONG 14-24S-33E AR	Well Number #214H
OGUID No 228937	Operator Name MATADOR PRODUCTION COMPANY	Elevation 3603'

Surface Location

U.C. or lot no.	Section	Township	Range	Line	Feet from the	North/South line	Feet from the	East/West line	County
A	14	24-S	33-E	-	539'	NORTH	5'	EAST	LEA

U.C. or lot no.	Section	Township	Range	Line	Feet from the	North/South line	Feet from the	East/West line	County
P	14	24-S	33-E	-	240'	SOUTH	989'	EAST	LEA

Dedicated Acres 159.57	Location Code	Resolution Code	Order No.
----------------------------------	---------------	-----------------	-----------

No allowable will be assigned to this completion until all interests have been consolidated or a non-standard unit has been approved by the division

**DETAIL VIEW
SCALE 1/20**

FIRST PERFORATION POINT
 NEW MEXICO EAST
 NAD 1927
 X=746167
 Y=416358
 LAT N 32 2238246
 LONG W 103 5373221
 NAD 1983
 X=787240
 Y=446117
 AT N 32 249145
 LONG W 103 5377594

SURFACE LOCATION
 NEW MEXICO EAST
 NAD 1927
 X=747147
 Y=445856
 LAT N 32 2232496
 LONG W 103 5341409
 NAD 1983
 X=788331
 Y=445915
 LAT N 32 2233735
 LONG W 103 5346180

LAST PERFORATION POINT
 NEW MEXICO EAST
 NAD 1927
 X=746159
 Y=441447
 LAT N 32 2111474
 LONG W 103 5373155
 NAD 1983
 X=787382
 Y=441505
 LAT N 32 2112714
 LONG W 103 5377920

BOTTOM HOLE LOCATION
 NEW MEXICO EAST
 NAD 1927
 X=746198
 Y=441357
 LAT N 32 2109600
 LONG W 103 5373154
 NAD 1983
 X=787383
 Y=441515
 LAT N 32 2110241
 LONG W 103 5377919

OPERATOR CERTIFICATION

I hereby certify that the information contained herein is true and correct to the best of my knowledge and belief, and that the same was prepared by me or under my direct supervision and control.

Chris Carleton 2/1/18
 Signature Date

Chris Carleton
 Printer Name

Operator Registration Number

Street Address

SURVEYOR CERTIFICATION

I hereby certify that the well location shown on this plat is a true and correct location as determined by me or under my direct supervision and that the same is true to the best of my belief.

01/11/2018
 Date of Survey

Michael B. Brown
 Signature and Seal

MICHAEL B. BROWN
 NEW MEXICO
 18329
 PROFESSIONAL SURVEYOR

Certificate Number

Production Summary Report

API: 30-025-43532

LEO THORSNESS 13 24 33 #211H

Printed On: Tuesday, March 20 2018

		Production					Injection				
Year	Pool	Month	Oil(BBLS)	Gas(MCF)	Water(BBLS)	Days P/I	Water(BBLS)	Co2(MCF)	Gas(MCF)	Other	Pressure

Production Summary Report

API: 30-025-44442

STRONG 14 24 33 AR #214H

Printed On: Tuesday, March 20 2018

			Production				Injection				
Year	Pool	Month	Oil(BBLS)	Gas(MCF)	Water(BBLS)	Days P/I	Water(BBLS)	Co2(MCF)	Gas(MCF)	Other	Pressure

September 22, 2017



FESCO, Ltd.
1100 FESCO Ave. - Alice, Texas 78332

For: Matador Production Company
One Lincoln Centre
5400 LBJ Freeway, Suite 1500
Dallas, Texas 75240

REPORT OF ASTM D-86 DISTILLATION

Oil/Condensate Sample: Guitar 10 24 28 RB No. 205H

Date Sampled: 9/15/2017

API Gravity @ 60 °F: 47.4°

Color: Straw

Observed Initial Boiling Point: 94 °F

Percent Recovered	Temperature °F
10	201
20	249
30	300
40	366
50	453
60	538
70	628
80	707
90	---
95	---
End Point	717
Recovery:	82.9 %
Residue:	15.6 %
Loss:	1.5 %
Totals:	100.0 %

Remark: Thermal Decomposition @ 82.9% Recovery & 717 Deg. F.

Certified: FESCO, Ltd. - Alice, Texas

David Dannhaus (361) 661-7015

Lab Job No.: 73295.003



Leo Thorsness Strong Owners
Interested Parties List

Company	Address	City	State	Zip
TRJ Investments, LLC	P.O. Box 1003	Gilmer	TX	75644
IITGWI, LLC	292 Pintail Pl.	Gilmer	TX	75645
Breck Marshall	77 Country Road 4171	Pittsburg	TX	75686
Gordon McMinn	2205 Nugent Drive	Mansfield	TX	75645
Pitt Hunting Club, LLC	292 Pintail Pl.	Gilmer	TX	75645
Alexander Castro	2723 Wagonwheel Drive	Carrollton	TX	75006
Ben Smith	817 McKinney Street	Arlington	TX	76012
Daniel Castro & Edward Castro	292 Pintail Pl.	Gilmer	TX	75645
Westco Family Limited Partnership	P.O. Box 1888	Gilmer	TX	75644
A. Gene Lenamond	2105 Kipling	Bayton	TX	77520
Nicholas L. Holland	2100 Eulas Way	Nolensville	TN	37135
Brian Arnold, Jr. and wife, Amanda Arnold	P.O. Box 50820	Midland	TX	79710
Energex, LLC	4873 Raintree Circle	Parker	CO	80134
Franklin Resources, LP	4880 S. Franklin Street	Englewood	CO	80113
Jack Mauldin, Jr.	288 LCR 404	Groesbeck	TX	76642
Justin Nine and wife, Sara Nine	4873 Raintree Circle	Parker	CO	80134
Joe and Lela Williams 2001 Family Trust	1602 Mission Ave.	Carlsbad	NM	88220
Madison M. Hinkle and wife, Susan M. Hinkle	P.O. Box 2292	Roswell	NM	88202
Marc A. Lilley and wife, Lisa M. Lilley	4425 98th Street, Suite 200	Lubbock	TX	79424
Mark and Annette McCloy, Trustees, or their successors in trust, under the Mark and Annette McCloy Revocable Living Trust of 2014, dated October 15, 2014	P.O. Box 795	Tatum	NM	88267
Martin G. Nusser	1735 E. Parallel Rd.	Garden City	KS	67846
Big Gully Oil, LLC	324 3rd Ave. West	Roundup	MT	59072
Rolla R. Hinkle, III and wife, Rosemary H. Hinkle	P.O. Box 2292	Roswell	NM	88202
Tim D. Lilley and wife, Tashina A. Lilley	4873 Raintree Circle	Parker	CO	80134





Shipment Confirmation Acceptance Notice

A. Mailer Action

Note to Mailer: The labels and volume associated to this form online, **must** match the labeled packages being presented to the USPS® employee with this form.

2018-03-21 AdminApp - Thorsness &
Strong Interested Parties
MRC Permian 83379.0001

Shipment Date: 03/21/2018

Shipped From:

Name: HOLLAND & HART LLP

Address: 110 N GUADALUPE ST # 1

City: SANTA FE

State: NM ZIP+4® 87501

Type of Mail	Volume
Priority Mail Express®*	
Priority Mail®	0
First-Class Package Service®	
Returns	
International*	
Other	24
Total	24

*Start time for products with service guarantees will begin when mail arrives at the local Post Office™ and items receive individual processing and acceptance scans.

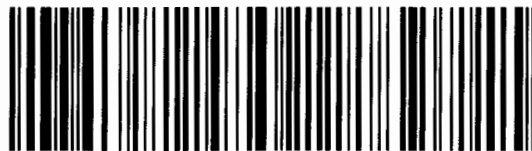
B. USPS Action

Note to RSS Clerk:

1. Home screen > Mailing/Shipping > More
2. Select Shipment Confirm
3. Scan or enter the barcode/label number from PS Form 5630
4. Confirm the volume count message by selecting Yes or No
5. Select Pay and End Visit to complete transaction

USPS EMPLOYEE: Please scan upon pickup or receipt of mail.
Leave form with customer or in customer's mail receptacle.

USPS SCAN AT ACCEPTANCE



9275 0901 1935 6200 0007 6658 05



Firm Mailing Book For Accountable Mail

Name and Address of Sender

Holland & Hart LLP
110 N Guadalupe St # 1
Santa Fe NM 87501

Affix Stamp Here
(if issued as an international
certificate of mailing or for
additional copies of this receipt).
Postmark with Date of Receipt.

- Check type of mail or service
Adult Signature Required
Adult Signature Restricted Delivery
Certified Mail
Certified Mail Restricted Delivery
Collect on Delivery (COD)
Insured Mail
Priority Mail
Priority Mail Express
Registered Mail
Return Receipt for Merchandise
Signature Confirmation
Signature Confirmation Restricted Delivery

Table with 13 columns: USPS Tracking/Article Number, Addressee (Name, Street, City, State, & ZIP Code), Postage, (Extra Service) Fee, Handling Charge, Actual Value if Registered, Insured Value, Due Sender if COD, ASR Fee, ASRD Fee, RD Fee, RR Fee, SC Fee, SCRD Fee, SH Fee. Contains 8 rows of mailing data.

Total Number of Pieces Listed by Sender: 24
Total Number of Pieces Received at Post Office: 24
Postmaster, Per (Name of receiving employee)



Firm Mailing Book For Accountable Mail

Name and Address of Sender		Check type of mail or service		Affix Stamp Here (if issued as an international certificate of mailing or for additional copies of this receipt). Postmark with Date of Receipt.												
USPS Tracking/Article Number		Addressee (Name, Street, City, State, & ZIP Code™)		Postage	(Extra Service) Fee	Handling Charge	Actual Value if Registered	Insured Value	Due Sender if COD	ASR Fee	ASRD Fee	RD Fee	RR Fee	SC Fee	SCRD Fee	SH Fee
9.	9214 8901 9403 8305 0679 39	Westco Family Limited Partnership PO BOX 1888 Glimmer TX 75644		1.63	3.45								1.50			
10.	9214 8901 9403 8305 0679 46	A Gene Lenamond 2105 Kipling Bayton TX 77520		1.63	3.45								1.50			
11.	9214 8901 9403 8305 0679 53	Nicholas L Holland 2100 Eulas Way Nolensville TN 37135		1.63	3.45								1.50			
12.	9214 8901 9403 8305 0679 60	Brian Arnold Jr and wife Amanda Arnold PO BOX 50820 Midland TX 79710		1.63	3.45								1.50			
13.	9214 8901 9403 8305 0679 77	Energex LLC 4873 Raintree Circle Parker CO 80134		1.63	3.45								1.50			
14.	9214 8901 9403 8305 0679 84	Franklin Resources LP 4880 S Franklin Street Englewood CO 80113		1.63	3.45								1.50			
15.	9214 8901 9403 8305 0679 91	Jack Mauldin Jr 288 LCR 404 Groesbeck TX 76642		1.63	3.45								1.50			
16.	9214 8901 9403 8305 0680 04	Justin Nire and wife Sara Nire 4873 Raintree Circle Parker CO 80134		1.63	3.45								1.50			
Total Number of Pieces Listed by Sender		Postmaster, Per (Name of receiving employee)														
24																



Firm Mailing Book For Accountable Mail

Name and Address of Sender
Holland & Hart LLP
110 N Guadalupe St # 1
Santa Fe NM 87501

Affix Stamp Here
(if issued as an international certificate of mailing or for additional copies of this receipt).
Postmark with Date of Receipt.

Check type of mail or service
 Adult Signature Required
 Adult Signature Restricted Delivery
 Certified Mail
 Certified Mail Restricted Delivery
 Collect on Delivery (COD)
 Insured Mail
 Priority Mail
 Priority Mail Express
 Registered Mail
 Return Receipt for Merchandise
 Signature Confirmation Restricted Delivery

USPS Tracking/Article Number	Addressee (Name, Street, City, State, & ZIP Code™)	Postage	(Extra Service) Fee	Handling Charge	Actual Value if Registered	Insured Value	Due Sender if COD	ASR Fee	ASRD Fee	RD Fee	RR Fee	SC Fee	SCRD Fee	SH Fee	
17. 9214 8901 9403 8305 0680 11	Joe and Lela Williams 2001 Family Trust 1602 Mission Ave Carlsbad NM 88220	1.63	3.45								1.50				
18. 9214 8901 9403 8305 0680 28	Madison M Hinkle and wife Susan M Hinkle PO BOX 2292 Roswell NM 88202	1.63	3.45								1.50				
19. 9214 8901 9403 8305 0680 35	Marc A Lilley and wife Lisa M Lilley 4425 98th Street Suite 200 Lubbock TX 79424	1.63	3.45								1.50				
20. 9214 8901 9403 8305 0680 42	Mark and Annette McCloy Trustees or their successors in trust under the Mark and Annette McCloy Revocable Living Trust, of 2014 dated October 15 2014 PO BOX 795 Tatum NM 88267	1.63	3.45								1.50				
21. 9214 8901 9403 8305 0680 59	Martin G Nusser 1735 E Parallel Rd Garden City KS 67846	1.63	3.45								1.50				
22. 9214 8901 9403 8305 0680 66	Big Gully Oil LLC 324 3rd Ave West Roundup MT 59072	1.63	3.45								1.50				
23. 9214 8901 9403 8305 0680 73	Rolla R Hinkle III and wife Rosemary H Hinkle PO BOX 2292 Roswell NM 88220	1.63	3.45								1.50				
24. 9214 8901 9403 8305 0680 80	Tim D Lilley and wife Tashina A Lilley 4873 Raintree Circle Parker CO 80134	1.63	3.45								1.50				
Total Number of Pieces Listed by Sender 24		Total Number of Pieces Received at Post Office 24		Postmaster, Per (Name of receiving employee)											

HOLLAND & HART^{LLP}



Michael H. Feldewert
Recognized Specialist in the
Area of Natural Resources - Oil
and Gas Law - New Mexico
Board of Legal Specialization
mfeldewert@hollandhart.com

March 21, 2018

CERTIFIED MAIL
RETURN RECEIPT REQUESTED

TO: ALL AFFECTED PARTIES

Re: Application of Matador Production Company to authorize pool commingling, off-lease storage and off-lease marketing at the Leslie Fed East Tank Battery located in the center of the S/2 S/2 (Units O and P) of Section 17, Township 25 South, Range 35 East, NMPM, Lea County, New Mexico.

Ladies and Gentlemen:

Enclosed is a copy of the above-referenced application which was filed with the New Mexico Oil Conservation Division on this date. Any objection to this application must be filed in writing within twenty days from this date at the Division's Santa Fe office located at 1220 South St. Francis Drive, Santa Fe, New Mexico, 87505. If no objection is received within this twenty-day period, this application may be approved administratively by the Division.

If you have any questions about this application, please contact the following:

Sherri Gore
Matador Production Company
972-371-5467
SGore@matadorresources.com

Sincerely,

Michael H. Feldewert
ATTORNEY FOR
MATADOR PRODUCTION COMPANY

Holland & Hart LLP

Phone [505] 988-4421 Fax [505] 983-6043 www.hollandhart.com

110 North Guadalupe Suite 1 Santa Fe, New Mexico 87501 Mailing Address P.O. Box 2208 Santa Fe, NM 87504-2208

Aspen Boulder Carson City Colorado Springs Denver Denver Tech Center Billings Boise Cheyenne Jackson Hole Las Vegas Reno Salt Lake City Santa Fe Washington, D.C. ☺