

# Initial Application Part I

Received: 05/30/2019

*This application is placed in file for record. It MAY or MAY NOT have been reviewed to be determined Administratively Complete*

RECEIVED: <b>05/30/2019</b>	REVIEWER: <b>MAM</b>	TYPE: <b>OLM</b>	APP NO: <b>pMAM1915053572</b>
-----------------------------	----------------------	------------------	-------------------------------

ABOVE THIS TABLE FOR OCD DIVISION USE ONLY

**NEW MEXICO OIL CONSERVATION DIVISION**  
 - Geological & Engineering Bureau -  
 1220 South St. Francis Drive, Santa Fe, NM 87505



### ADMINISTRATIVE APPLICATION CHECKLIST

THIS CHECKLIST IS MANDATORY FOR ALL ADMINISTRATIVE APPLICATIONS FOR EXCEPTIONS TO DIVISION RULES AND REGULATIONS WHICH REQUIRE PROCESSING AT THE DIVISION LEVEL IN SANTA FE

**Applicant:** CHEVRON USA INC **OGRID Number:** 4323  
**Well Name:** CB SO 15 22 004 1H **API:** 30-015-44876  
**Pool:** PURPLE SAGE; WOLFCAMP (GAS) **Pool Code:** 98220

### SUBMIT ACCURATE AND COMPLETE INFORMATION REQUIRED TO PROCESS THE TYPE OF APPLICATION INDICATED BELOW

1) **TYPE OF APPLICATION:** Check those which apply for [A]

A. Location – Spacing Unit – Simultaneous Dedication

☐ NSL ☐ NSP (PROJECT AREA) ☐ NSP (PRORATION UNIT) ☐ SD

B. Check one only for [ I ] or [ II ]

[ I ] Commingling – Storage – Measurement

☐ DHC ☐ CTB ☐ PLC ☐ PC ☐ OLS ☒ OLM

[ II ] Injection – Disposal – Pressure Increase – Enhanced Oil Recovery

☐ WFX ☐ PMX ☐ SWD ☐ IPI ☐ EOR ☐ PPR

# OLM-166

2) **NOTIFICATION REQUIRED TO:** Check those which apply.

- A. ☐ Offset operators or lease holders  
 B. ☒ Royalty, overriding royalty owners, revenue owners  
 C. ☐ Application requires published notice  
 D. ☐ Notification and/or concurrent approval by SLO  
 E. ☐ Notification and/or concurrent approval by BLM  
 F. ☐ Surface owner  
 G. ☒ For all of the above, proof of notification or publication is attached, and/or,  
 H. ☐ No notice required

#### FOR OCD ONLY

- ☐ Notice Complete  
☐ Application Content Complete

3) **CERTIFICATION:** I hereby certify that the information submitted with this application for administrative approval is **accurate** and **complete** to the best of my knowledge. I also understand that **no action** will be taken on this application until the required information and notifications are submitted to the Division.

**Note:** Statement must be completed by an individual with managerial and/or supervisory capacity.

LAURA BECERRA

Print or Type Name

Signature

5/28/2019

Date

(432) 687-7665

Phone Number

LBECERRA@CHEVRON.COM

e-mail Address



**Chevron North America**  
**Exploration and Production Company**  
(A Chevron U.S.A. Inc. Division)  
6301 Deauville Blvd  
Midland, TX 79706  
Tel 432.687.7665  
LBecerra@Chevron.com

May 28, 2019

Attn: Michael McMillan  
Oil Conservation Division  
1220 S. St. Francis Drive  
Santa Fe, NM 87505

Re: Application for Off-Lease Measurement – Oil and Gas

Dear Mr. McMillan,

Chevron U.S.A. Inc. respectfully requests administrative approval of Off-Lease Measurement for oil and gas from Chevron's Culebra Bluff West Sec. 15 Central Tank Battery located at Sec. 15, T23S-R28E, Lat: 32.310570, Long: 104.074322 (NAD 83). This site will measure all fluid streams flowing from the following wells:

CB SO 15 22 004 1H	30-015-44876	PURPLE SAGE; WOLFCAMP (GAS)	SHL: 336' FNL 779' FWL, Sec. 15, T23S-R28E, UL: D	BHL: 177' FSL 307' FWL, Sec. 22, T23S-R28E, UL: M
CB SO 15 22 004 2H	30-015-44877	PURPLE SAGE; WOLFCAMP (GAS)	SHL: 336' FNL 804' FWL, Sec. 15, T23S-R28E, UL: D	BHL: 162' FSL 1,239' FWL, Sec. 22, T23S-R28E, UL: M
CB SO 15 22 004 3H	30-015-44878	PURPLE SAGE; WOLFCAMP (GAS)	SHL: 335' FNL 829' FWL, Sec. 15, T23S-R28E, UL: D	BHL: 167' FSL 2,196' FWL, Sec. 22, T23S-R28E, UL: N

The wells are located in the W/2 of Section 15, T23S-R28E, Eddy County, New Mexico. Oil and gas will be measured at the CTB. Oil will be measured using a LACT meter for both pipeline sales and trucking. Gas will be measured utilizing an orifice meter at the discharge of the CTB. C-102s for all wells connected to this battery and facility diagram are included with this notification.

I have attached the Administrative Application checklist, facility diagram, C-102s for referenced wells and proof of notice to interest owners. Should you need additional information, please give me a call at (432) 687-7665 or [LBecerra@Chevron.com](mailto:LBecerra@Chevron.com).

Sincerely,

Laura Becerra  
Regulatory Specialist  
Midcontinent BU

**District I**  
1625 N. French Dr., Hobbs, NM 88240  
Phone: (575) 393-6161 Fax: (575) 393-0720

**District II**  
811 S. First St., Artesia, NM 88210  
Phone: (575) 748-1283 Fax: (575) 748-9720

**District III**  
1000 Rio Brazos Road, Aztec, NM 87410  
Phone: (505) 334-6178 Fax: (505) 334-6170

**District IV**  
1220 S. St. Francis Dr., Santa Fe, NM 87505  
Phone: (505) 476-3460 Fax: (505) 476-3462

State of New Mexico  
Energy, Minerals & Natural Resources Department  
**OIL CONSERVATION DIVISION**  
1220 South St. Francis Dr.  
Santa Fe, NM 87505

Form C-102  
Revised August 1, 2011  
Submit one copy to appropriate  
District Office

☒ AMENDED REPORT

"As-Drilled"

**WELL LOCATION AND ACREAGE DEDICATION PLAT**

<sup>1</sup> API Number 30-015-44876		<sup>2</sup> Pool Code 98220		<sup>3</sup> Pool Name PURPLE SAGE; WOLFCAMP (GAS)	
<sup>4</sup> Property Code 321188		<sup>5</sup> Property Name CB SO 15 22 004			<sup>6</sup> Well Number 1H
<sup>7</sup> OGRID No. 4323		<sup>8</sup> Operator Name CHEVRON U.S.A. INC.			<sup>9</sup> Elevation 3006'

<sup>10</sup> Surface Location

UL or lot no.	Section	Township	Range	Lot Idn	Feet from the	North/South line	Feet from the	East/West line	County
D	15	23 SOUTH	28 EAST, N.M.P.M.		336'	NORTH	779'	WEST	EDDY

<sup>11</sup> Bottom Hole Location If Different From Surface

UL or lot no.	Section	Township	Range	Lot Idn	Feet from the	North/South line	Feet from the	East/West line	County
M	22	23 SOUTH	28 EAST, N.M.P.M.		177'	SOUTH	307'	WEST	EDDY

<sup>12</sup> Dedicated Acres 640	<sup>13</sup> Joint or Infill	<sup>14</sup> Consolidation Code	<sup>15</sup> Order No.
--------------------------------------	-------------------------------	----------------------------------	-------------------------

No allowable will be assigned to this completion until all interests have been consolidated or a non-standard unit has been approved by the division.

<p><b>CB SO 15 22 004 NO.1H WELL</b></p> <p>X= 577,987 Y= 477,174 LAT. 32.311616 N LONG. 104.080901 W NAD 27</p> <p>X= 619,169 Y= 477,234 LAT. 32.311737 N LONG. 104.081398 W NAD83/2011</p> <p>ELEVATION +3006' NAVD 88</p>		<p><b><sup>17</sup> OPERATOR CERTIFICATION</b></p> <p>I hereby certify that the information contained herein is true and complete to the best of my knowledge and belief, and that this organization either owns a working interest or unleased mineral interest in the land including the proposed bottom hole location or has a right to drill this well at this location pursuant to a contract with an owner of such a mineral or working interest, or to a voluntary pooling agreement or a compulsory pooling order heretofore entered by the division.</p> <p><i>[Signature]</i> 4/16/2019 Signature Date</p> <p>Laura Becerra Printed Name</p> <p>LBecerra@Chevron.com E-mail Address</p>
<p><b>FINAL TOP TAKE POINT</b></p> <p>X= 577,552 Y= 477,069 LAT. 32.311329 N LONG. 104.082310 W NAD 27</p> <p>X= 618,734 Y= 477,128 LAT. 32.311450 N LONG. 104.082807 W NAD83/2011</p>	<p><b>CORNER COORDINATES TABLE (NAD 27)</b></p> <p>A - Y=477496.90, X=577205.98 B - Y=477585.85, X=582543.98 C - Y=472181.86, X=577232.84 D - Y=472266.72, X=582546.90 E - Y=466858.95, X=577288.92 F - Y=467012.61, X=582560.30</p>	<p><b><sup>18</sup> SURVEYOR CERTIFICATION</b></p> <p>I hereby certify that the well location shown on this plat was plotted from field notes of actual surveys made by me or under my supervision, and that the same is true and correct to the best of my belief.</p>
<p><b>FINAL BOTTOM TAKE POINT</b></p> <p>X= 577,588 Y= 467,203 LAT. 32.284209 N LONG. 104.082269 W NAD 27</p> <p>X= 618,770 Y= 467,263 LAT. 32.284330 N LONG. 104.082765 W NAD83/2011</p>	<p><b>ACTUAL BOTTOM HOLE LOCATION</b></p> <p>X= 577,594 Y= 467,045 LAT. 32.283773 N LONG. 104.082251 W NAD 27</p> <p>X= 618,776 Y= 467,104 LAT. 32.283894 N LONG. 104.082747 W NAD83/2011</p>	<p>03/21/2018 Date of Survey</p> <p><i>[Signature]</i> Signature and Seal of Professional Surveyor</p> <p><b>STEVEN M. COLEMAN</b> NEW MEXICO 22921 PROFESSIONAL SURVEYOR</p> <p>Certificate Number 03/08/2019</p>

District I  
1625 N. French Dr., Hobbs, NM 88240  
Phone: (575) 393-6161 Fax: (575) 393-0720  
District II  
811 S. First St., Artesia, NM 88210  
Phone: (575) 748-1283 Fax: (575) 748-9720  
District III  
1000 Rio Brazos Road, Aztec, NM 87410  
Phone: (505) 334-6178 Fax: (505) 334-6170  
District IV  
1220 S. St. Francis Dr., Santa Fe, NM 87505  
Phone: (505) 476-3460 Fax: (505) 476-3462

State of New Mexico  
Energy, Minerals & Natural Resources Department  
OIL CONSERVATION DIVISION  
1220 South St. Francis Dr.  
Santa Fe, NM 87505

Form C-102  
Revised August 1, 2011  
Submit one copy to appropriate  
District Office

☒ AMENDED REPORT

"As-Drilled"

WELL LOCATION AND ACREAGE DEDICATION PLAT

<sup>1</sup> API Number 30-015-44877	<sup>2</sup> Pool Code 98220	<sup>3</sup> Pool Name PURPLE SAGE; WOLFCAMP (GAS)
<sup>4</sup> Property Code 321188	<sup>5</sup> Property Name CB SO 15 22 004	<sup>6</sup> Well Number 2H
<sup>7</sup> OGRID No. 4323	<sup>8</sup> Operator Name CHEVRON U.S.A. INC.	<sup>9</sup> Elevation 3006'

<sup>10</sup> Surface Location



UL or lot no.	Section	Township	Range	Lot Idn	Feet from the	North/South line	Feet from the	East/West line	County
D	15	23 SOUTH	28 EAST, N.M.P.M.		336'	NORTH	804'	WEST	EDDY

<sup>11</sup> Bottom Hole Location If Different From Surface

UL or lot no.	Section	Township	Range	Lot Idn	Feet from the	North/South line	Feet from the	East/West line	County
M	22	23 SOUTH	28 EAST, N.M.P.M.		162'	SOUTH	1239'	WEST	EDDY

<sup>12</sup> Dedicated Acres 640	<sup>13</sup> Joint or Infill	<sup>14</sup> Consolidation Code	<sup>15</sup> Order No.
--------------------------------------	-------------------------------	----------------------------------	-------------------------

No allowable will be assigned to this completion until all interests have been consolidated or a non-standard unit has been approved by the division.

<p><sup>16</sup></p> <table border="1"> <tr><td colspan="2">CB SO 15 22 004 NO.2H WELL</td></tr> <tr><td>X= 578,012</td><td>NAD 27</td></tr> <tr><td>Y= 477,175</td><td></td></tr> <tr><td>LAT. 32.311617 N</td><td></td></tr> <tr><td>LONG. 104.080820 W</td><td></td></tr> <tr><td>X= 619,194</td><td>NAD83/2011</td></tr> <tr><td>Y= 477,234</td><td></td></tr> <tr><td>LAT. 32.311738 N</td><td></td></tr> <tr><td>LONG. 104.081317 W</td><td></td></tr> <tr><td colspan="2">ELEVATION +3006' NAVD 88</td></tr> </table> <table border="1"> <tr><td colspan="2">FINAL TOP TAKE POINT</td></tr> <tr><td>X= 578,475</td><td>NAD 27</td></tr> <tr><td>Y= 477,093</td><td></td></tr> <tr><td>LAT. 32.311389 N</td><td></td></tr> <tr><td>LONG. 104.079321 W</td><td></td></tr> <tr><td>X= 619,657</td><td>NAD83/2011</td></tr> <tr><td>Y= 477,152</td><td></td></tr> <tr><td>LAT. 32.311509 N</td><td></td></tr> <tr><td>LONG. 104.079819 W</td><td></td></tr> </table> <p>CORNER COORDINATES TABLE (NAD 27)</p> <p>A - Y=477496.90, X=577205.98 B - Y=477585.85, X=582543.98 C - Y=472181.86, X=577232.84 D - Y=472266.72, X=582546.90 E - Y=466858.95, X=577288.92 F - Y=467012.61, X=582560.30</p> <table border="1"> <tr><td colspan="2">FINAL BOTTOM TAKE POINT</td></tr> <tr><td>X= 578,524</td><td>NAD 27</td></tr> <tr><td>Y= 467,231</td><td></td></tr> <tr><td>LAT. 32.284279 N</td><td></td></tr> <tr><td>LONG. 104.079238 W</td><td></td></tr> <tr><td>X= 619,707</td><td>NAD83/2011</td></tr> <tr><td>Y= 467,290</td><td></td></tr> <tr><td>LAT. 32.284400 N</td><td></td></tr> <tr><td>LONG. 104.079734 W</td><td></td></tr> </table> <table border="1"> <tr><td colspan="2">ACTUAL BOTTOM HOLE LOCATION</td></tr> <tr><td>X= 578,526</td><td>NAD 27</td></tr> <tr><td>Y= 467,057</td><td></td></tr> <tr><td>LAT. 32.283801 N</td><td></td></tr> <tr><td>LONG. 104.079235 W</td><td></td></tr> <tr><td>X= 619,708</td><td>NAD83/2011</td></tr> <tr><td>Y= 467,116</td><td></td></tr> <tr><td>LAT. 32.283922 N</td><td></td></tr> <tr><td>LONG. 104.079731 W</td><td></td></tr> </table>	CB SO 15 22 004 NO.2H WELL		X= 578,012	NAD 27	Y= 477,175		LAT. 32.311617 N		LONG. 104.080820 W		X= 619,194	NAD83/2011	Y= 477,234		LAT. 32.311738 N		LONG. 104.081317 W		ELEVATION +3006' NAVD 88		FINAL TOP TAKE POINT		X= 578,475	NAD 27	Y= 477,093		LAT. 32.311389 N		LONG. 104.079321 W		X= 619,657	NAD83/2011	Y= 477,152		LAT. 32.311509 N		LONG. 104.079819 W		FINAL BOTTOM TAKE POINT		X= 578,524	NAD 27	Y= 467,231		LAT. 32.284279 N		LONG. 104.079238 W		X= 619,707	NAD83/2011	Y= 467,290		LAT. 32.284400 N		LONG. 104.079734 W		ACTUAL BOTTOM HOLE LOCATION		X= 578,526	NAD 27	Y= 467,057		LAT. 32.283801 N		LONG. 104.079235 W		X= 619,708	NAD83/2011	Y= 467,116		LAT. 32.283922 N		LONG. 104.079731 W			<p><sup>17</sup> <b>OPERATOR CERTIFICATION</b></p> <p>I hereby certify that the information contained herein is true and complete to the best of my knowledge and belief, and that this organization either owns a working interest or unleased mineral interest in the land including the proposed bottom hole location or has a right to drill this well at this location pursuant to a contract with an owner of such a mineral or working interest, or to a voluntary pooling agreement or a compulsory pooling order heretofore entered by the division.</p> <p> 3/8/2019 Signature Date</p> <p>Laura Becerra Printed Name</p> <p>LBecerra@Chevron.com E-mail Address</p> <p><sup>18</sup> <b>SURVEYOR CERTIFICATION</b></p> <p>I hereby certify that the well location shown on this plat was plotted from field notes of actual surveys made by me or under my supervision, and that the same is true and correct to the best of my belief.</p> <p>03/21/2018 Date of Survey</p> <p> 22921 Signature and Seal of Professional Surveyor</p> <p>Steven M. Coleman Certificate Number</p> <p>03/08/2019</p>
CB SO 15 22 004 NO.2H WELL																																																																												
X= 578,012	NAD 27																																																																											
Y= 477,175																																																																												
LAT. 32.311617 N																																																																												
LONG. 104.080820 W																																																																												
X= 619,194	NAD83/2011																																																																											
Y= 477,234																																																																												
LAT. 32.311738 N																																																																												
LONG. 104.081317 W																																																																												
ELEVATION +3006' NAVD 88																																																																												
FINAL TOP TAKE POINT																																																																												
X= 578,475	NAD 27																																																																											
Y= 477,093																																																																												
LAT. 32.311389 N																																																																												
LONG. 104.079321 W																																																																												
X= 619,657	NAD83/2011																																																																											
Y= 477,152																																																																												
LAT. 32.311509 N																																																																												
LONG. 104.079819 W																																																																												
FINAL BOTTOM TAKE POINT																																																																												
X= 578,524	NAD 27																																																																											
Y= 467,231																																																																												
LAT. 32.284279 N																																																																												
LONG. 104.079238 W																																																																												
X= 619,707	NAD83/2011																																																																											
Y= 467,290																																																																												
LAT. 32.284400 N																																																																												
LONG. 104.079734 W																																																																												
ACTUAL BOTTOM HOLE LOCATION																																																																												
X= 578,526	NAD 27																																																																											
Y= 467,057																																																																												
LAT. 32.283801 N																																																																												
LONG. 104.079235 W																																																																												
X= 619,708	NAD83/2011																																																																											
Y= 467,116																																																																												
LAT. 32.283922 N																																																																												
LONG. 104.079731 W																																																																												

District I  
1625 N. French Dr., Hobbs, NM 88240  
Phone: (575) 393-6161 Fax: (575) 393-0720  
District II  
811 S. First St., Artesia, NM 88210  
Phone: (575) 748-1283 Fax: (575) 748-9720  
District III  
1000 Rio Brazos Road, Aztec, NM 87410  
Phone: (505) 334-6178 Fax: (505) 334-6170  
District IV  
1220 S. St. Francis Dr., Santa Fe, NM 87505  
Phone: (505) 476-3460 Fax: (505) 476-3462

State of New Mexico  
Energy, Minerals & Natural Resources Department  
OIL CONSERVATION DIVISION  
1220 South St. Francis Dr.  
Santa Fe, NM 87505

Form C-102  
Revised August 1, 2011  
Submit one copy to appropriate  
District Office

☒ AMENDED REPORT

"As-Drilled"

WELL LOCATION AND ACREAGE DEDICATION PLAT

<sup>1</sup> API Number 30-015-44878	<sup>2</sup> Pool Code 98220	<sup>3</sup> Pool Name PURPLE SAGE; WOLFCAMP (GAS)
<sup>4</sup> Property Code 321188	<sup>5</sup> Property Name CB SO 15 22 004	<sup>6</sup> Well Number 3H
<sup>7</sup> OGRID No. 4323	<sup>8</sup> Operator Name CHEVRON U.S.A. INC.	<sup>9</sup> Elevation 3007'

<sup>10</sup> Surface Location



UL or lot no.	Section	Township	Range	Lot Idn	Feet from the	North/South line	Feet from the	East/West line	County
D	15	23 SOUTH	28 EAST, N.M.P.M.		335'	NORTH	829'	WEST	EDDY

<sup>11</sup> Bottom Hole Location If Different From Surface

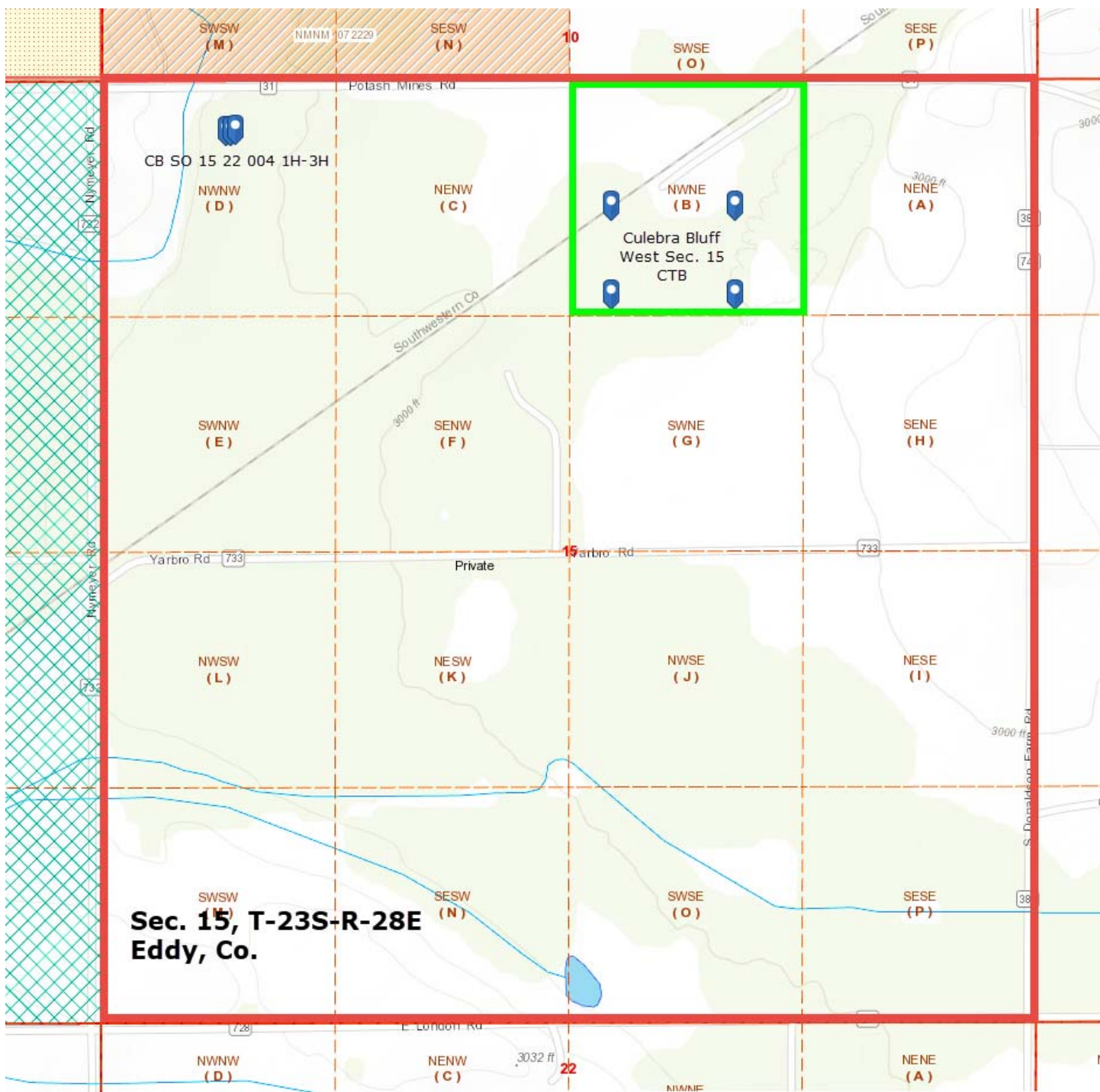
UL or lot no.	Section	Township	Range	Lot Idn	Feet from the	North/South line	Feet from the	East/West line	County
N	22	23 SOUTH	28 EAST, N.M.P.M.		167'	SOUTH	2196'	WEST	EDDY

<sup>12</sup> Dedicated Acres 640	<sup>13</sup> Joint or Infill	<sup>14</sup> Consolidation Code	<sup>15</sup> Order No.
--------------------------------------	-------------------------------	----------------------------------	-------------------------

No allowable will be assigned to this completion until all interests have been consolidated or a non-standard unit has been approved by the division.

<p><b>CB SO 15 22 004 NO.3H WELL</b></p> <p>X= 578,037 Y= 477,175 LAT. 32.311618 N LONG. 104.080739 W NAD 27</p> <p>X= 619,219 Y= 477,235 LAT. 32.311739 N LONG. 104.081236 W NAD83/2011</p> <p>ELEVATION +3007' NAVD 88</p>	<p><b>FINAL TOP TAKE POINT</b></p> <p>X= 579,441 Y= 477,105 LAT. 32.311417 N LONG. 104.076195 W NAD 27</p> <p>X= 620,623 Y= 477,165 LAT. 32.311538 N LONG. 104.076692 W NAD83/2011</p> <p><b>CORNER COORDINATES TABLE (NAD 27)</b></p> <p>A - Y=477496.90, X=577205.98 B - Y=477585.85, X=582543.98 C - Y=472181.86, X=577232.84 D - Y=472266.72, X=582546.90 E - Y=466858.95, X=577288.92 F - Y=467012.61, X=582560.30</p> <p><b>FINAL BOTTOM TAKE POINT</b></p> <p>X= 579,492 Y= 467,251 LAT. 32.284327 N LONG. 104.076108 W NAD 27</p> <p>X= 620,674 Y= 467,310 LAT. 32.284448 N LONG. 104.076604 W NAD83/2011</p> <p><b>ACTUAL BOTTOM HOLE LOCATION</b></p> <p>X= 579,482 Y= 467,090 LAT. 32.283885 N LONG. 104.076139 W NAD 27</p> <p>X= 620,665 Y= 467,149 LAT. 32.284006 N LONG. 104.076635 W NAD83/2011</p>	<p><b><sup>17</sup> OPERATOR CERTIFICATION</b></p> <p>I hereby certify that the information contained herein is true and complete to the best of my knowledge and belief, and that this organization either owns a working interest or unleased mineral interest in the land including the proposed bottom hole location or has a right to drill this well at this location pursuant to a contract with an owner of such a mineral or working interest, or to a voluntary pooling agreement or a compulsory pooling order heretofore entered by the division.</p> <p> 4/16/2019 Signature Date</p> <p>Laura Becerra Printed Name</p> <p>LBecerra@chevron.com E-mail Address</p> <p><b><sup>18</sup> SURVEYOR CERTIFICATION</b></p> <p>I hereby certify that the well location shown on this plat was plotted from field notes of actual surveys made by me or under my supervision, and that the same is true and correct to the best of my belief.</p> <p>03/21/2018 Date of Survey</p> <p> Signature and Seal of Professional Surveyor</p> <p>Steven M. Coleman Certificate Number</p> <p>03/08/2019</p>
--	---	--





# LEGEND

- Proposed Pad
- X — Existing Fence
- P — Existing Powerline
- Existing Flowline
- - - Existing Pad/Road
- - - Section Line
- - - Existing Ditch

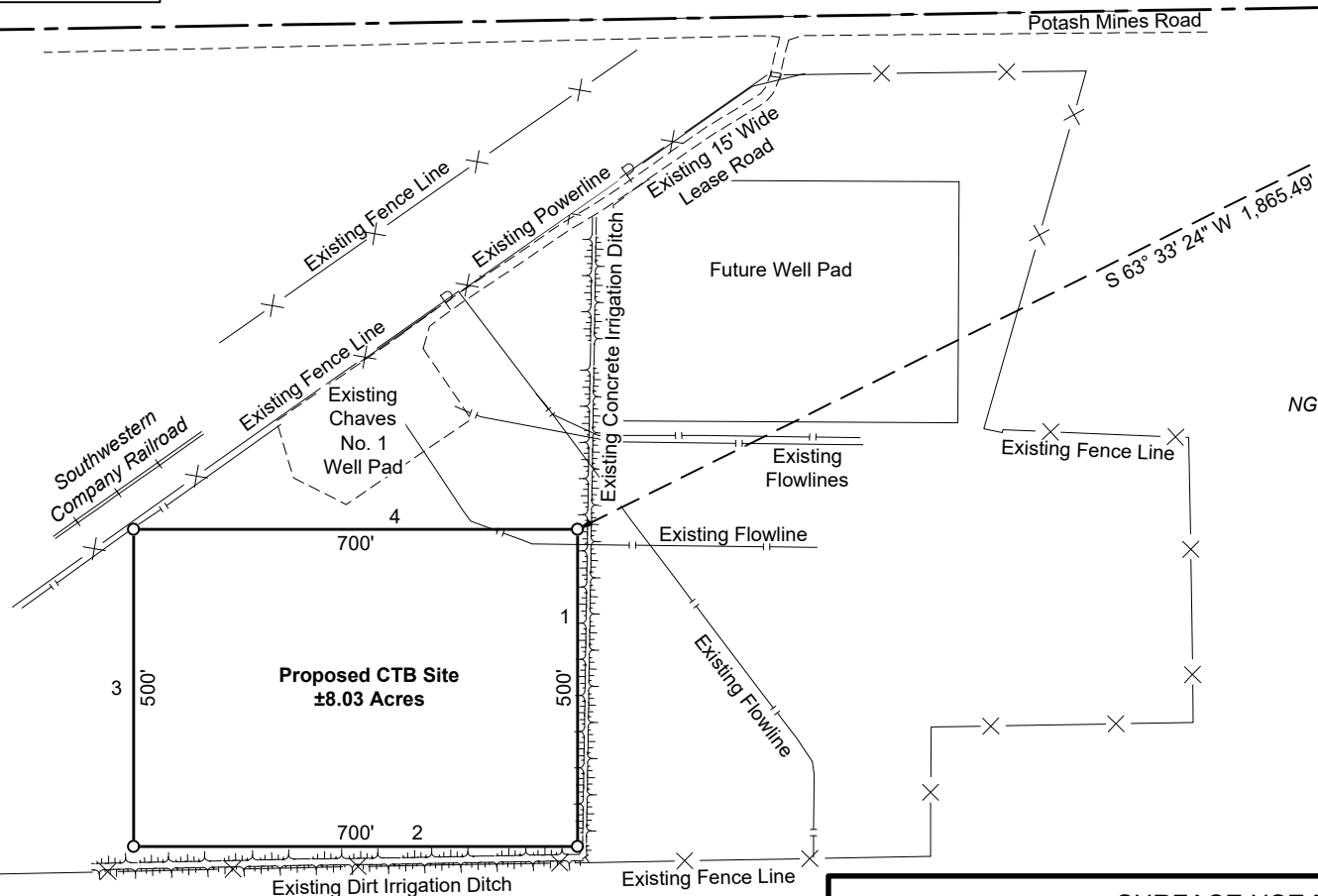
R 28 E

Sec. 10

Alfred Carrasco

Calculated  
Corner @ the  
NE Corner of  
Section 15

T  
23  
S



**Proposed CTB Site  
±8.03 Acres**

Future Well Pad

**Sec. 15**

NGL Water Solutions LLC

## SURFACE USE PLAT

Page 1 of 2

**CHEVRON U.S.A. INC.**

PROPOSED SECTION 15  
CTB SITE

SECTION 15, T23S-R28E  
EDDY COUNTY, NEW MEXICO

FOR THE EXCLUSIVE USE OF  
CHEVRON U.S.A. INC.  
I, Robert L. Lastrapes, Professional  
Surveyor, do hereby state this plat is true  
and correct to the best of my knowledge.

*Not to be used for construction,  
bidding, recordation, conveyance,  
sales, or engineering design.*

**PRELIMINARY**

Robert L. Lastrapes  
Registration No. 23006

### REVISIONS

DRAWN BY: RMB	#	BY:	DATE:	DESCRIPTION:
PROJ. MGR.: GDG				
DATE: 08/01/2018				
FILENAME: T:\2017\2176778\DWG\CB Sec. 15 CTB.dwg				



C. H. Fenstermaker & Associates, L.L.C.  
135 Regency Sq. Lafayette, LA 70508  
Ph. 337-237-2200 Fax. 337-232-3299  
[www.fenstermaker.com](http://www.fenstermaker.com)



**DISCLAIMER:** At this time, C. H. Fenstermaker & Associates, L.L.C. has not performed nor was asked to perform any type of engineering, hydrological modeling, flood plain, or "No Rise" certification analyses, including but not limited to determining whether the project will impact flood hazards in connection with federal/FEMA, state, and/or local laws, ordinances and regulations. Accordingly, Fenstermaker makes no warranty or representation of any kind as to the foregoing issues, and persons or entities using this information shall do so at their own risk.

**NOTE:**

Please be advised, that while reasonable efforts are made to locate and verify pipelines and anomalies using our standard pipeline locating equipment, it is impossible to be 100 % effective. As such, we advise using caution when performing work as there is a possibility that pipelines and other hazards, such as fiber optic cables, PVC pipelines, etc. may exist undetected on site.

**NOTE:**

Many states maintain information centers that establish links between those who dig (excavators) and those who own and operate underground facilities (operators). It is advisable and in most states, law, for the contractor to contact the center for assistance in locating and marking underground utilities. For guidance, New Mexico One Call [www.nmonecall.org](http://www.nmonecall.org)

PROPOSED PAD		
COURSE	BEARING	DISTANCE
1	SOUTH	500.00'
2	WEST	700.00'
3	NORTH	500.00'
4	EAST	700.00'

NW CORNER CTB PAD				NE CORNER CTB PAD			
X=	580,174			X=	580,874		
Y=	476,755			Y=	476,755		
LAT.	32.310449 N	NAD 27		LAT.	32.310445 N	NAD 27	
LONG.	104.073826 W			LONG.	104.071561 W		
X=	621,356			X=	622,056		
Y=	476,814			Y=	476,815		
LAT.	32.310570 N	NAD83/86		LAT.	32.310566 N	NAD83/86	
LONG.	104.074322 W			LONG.	104.072056 W		
ELEV.	+2,995'	NAVD88		ELEV.	+2,995'	NAVD88	
SW CORNER CTB PAD				SE CORNER CTB PAD			
X=	580,174			X=	580,874		
Y=	476,255			Y=	476,255		
LAT.	32.309075 N	NAD 27		LAT.	32.309070 N	NAD 27	
LONG.	104.073830 W			LONG.	104.071564 W		
X=	621,356			X=	622,056		
Y=	476,314			Y=	476,315		
LAT.	32.309196 N	NAD83/86		LAT.	32.309191 N	NAD83/86	
LONG.	104.074325 W			LONG.	104.072059 W		
ELEV.	+2,995'	NAVD88		ELEV.	+2,996'	NAVD88	



C. H. Fenstermaker & Associates, L.L.C.  
135 Regency Sq. Lafayette, LA 70508  
Ph. 337-237-2200 Fax. 337-232-3299  
[www.fenstermaker.com](http://www.fenstermaker.com)

FOR THE EXCLUSIVE USE OF  
CHEVRON U.S.A. INC.  
I, Robert L. Lastrapes, Professional  
Surveyor, do hereby state this plat is true  
and correct to the best of my knowledge.

*Not to be used for construction,  
bidding, recordation, conveyance,  
sales, or engineering design.*

**PRELIMINARY**

Robert L. Lastrapes  
Registration No. 23006

**SURFACE USE PLAT**

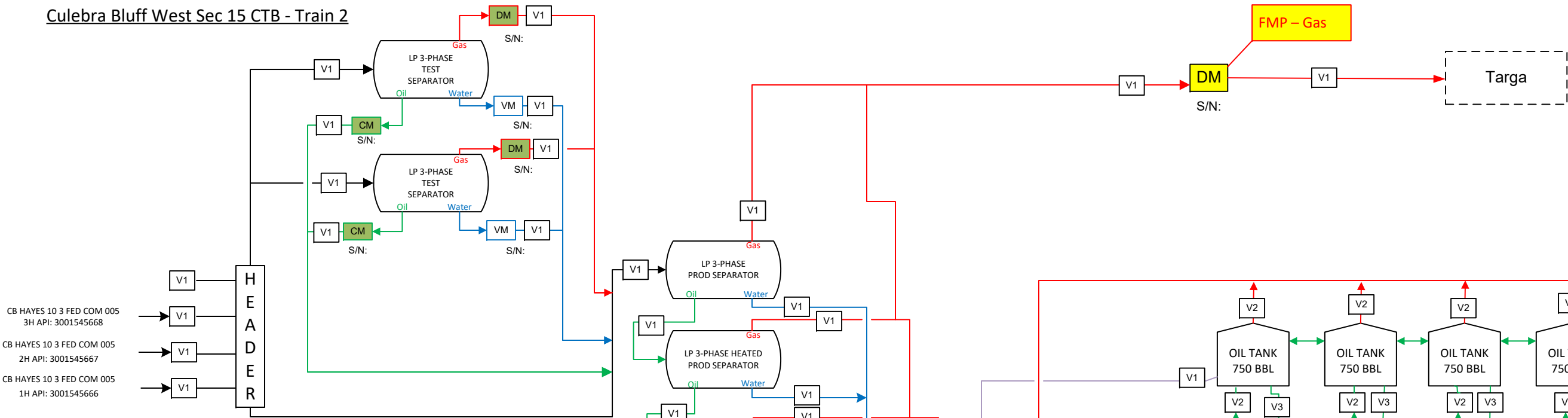
Page 2 of 2

**CHEVRON U.S.A. INC.**  
**PROPOSED SECTION 15**  
**CTB SITE**  
**SECTION 15, T23S-R28E**  
**EDDY COUNTY, NEW MEXICO**

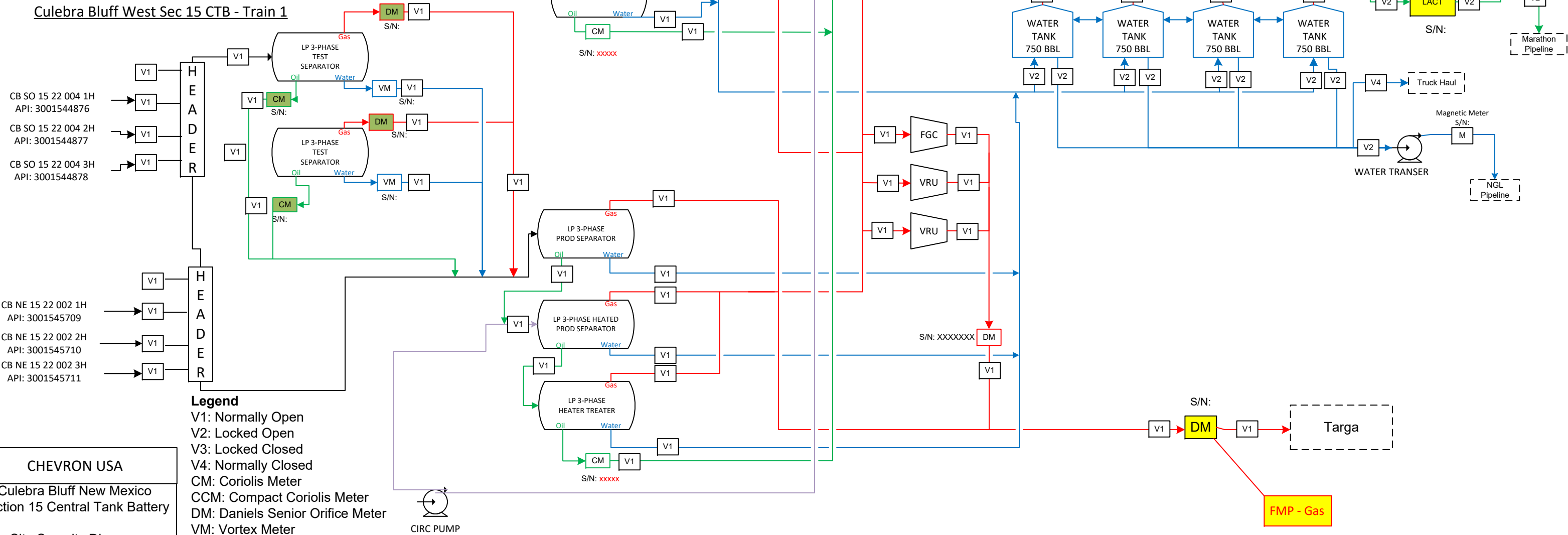
**REVISIONS**

DRAWN BY: RMB	#	BY:	DATE:	DESCRIPTION:
PROJ. MGR.: GDG				
DATE: 08/01/2018				
FILENAME: T:\2017\2176778\DWG\CB Sec. 15 CTB.dwg				

Culebra Bluff West Sec 15 CTB - Train 2



Culebra Bluff West Sec 15 CTB - Train 1



Legend

V1: Normally Open  
V2: Locked Open  
V3: Locked Closed  
V4: Normally Closed  
CM: Coriolis Meter  
CCM: Compact Coriolis Meter  
DM: Daniels Senior Orifice Meter  
VM: Vortex Meter

Allocation

FMP

CHEVRON USA

Culebra Bluff New Mexico  
Section 15 Central Tank Battery

Site Security Diagram

Eddy County, New Mexico  
April 2019

## Interest Owners

Chevron U.S.A. Inc. 1400 Smith St. Houston, TX 77002	Chevron Midcontinent, LP 1400 Smith St. Houston, TX 77002
Nortex Corporation 3009 Post Oak Blvd., Suite 1212 Houston, TX 77056	Oxy USA Inc. 5 Greenway Plaza Suite 110 Houston, TX 77046
Occidental Permian, Limited Partnership 5 Greenway Plaza Suite 110 Houston, TX 77046	XTO Holdings LLC 810 Houston, St. Fort Worth, TX 76102
Devon Energy Production Company, LP 20 North Broadway Suite 1500 Oklahoma City, OK 73102	Acoma Energy, LLC 4100 E. Mississippi Ave. Suite 400 Denver, CO 80246
RKC, Inc. 7500 E Arapahoe St. Centennial, CO 80112	Kathleen A. Phillips P.O. Box 11313 Midland, TX 79702
Andrea R. Brown (Nanergy, LLC) 296 Vermilion Marble Trl. Buda, TX 78610	Jerry Briggs 5101 PDQ Rd. Colorado City, TX 79512



Irvin Gutierrez  
Land Representative

**Chevron U.S.A. Inc.**  
1400 Smith Street  
Houston, Texas 77002  
Tel 713.372.4299  
irvin.gutierrez@chevron.com

**VIA CERTIFIED MAIL – RETURN RECEIPT REQUESTED**

May 22, 2019

Oxy USA, Inc  
5 Greenway Plaza, Ste 110  
Houston, TX 77046

**RE: Application for Off Lease Measurement of Oil and Gas:**

CB SO 15 22 004 #1H, #2H, #3H  
W/2 Section 15, Township 23 South, Range 28 East and  
W/2 Section 22, Township 23 South, Range 28 East, N.M.P.M.,  
Eddy County, New Mexico

Dear Interest Owner:

This letter will serve as notice that Chevron U.S.A. Inc. has applied for a permit from the Oil Conservation Division in Santa Fe, NM. for Off Lease Measurement of Oil and Gas.

Should your company have any objection, it must be filed in writing within twenty (20) days from the date of this notice. If the Oil Conservation Division determines the application complies with the applicable regulations, then it will be approved. The New Mexico Oil Conservation Division address is 1220 South St. Francis Drive, Santa Fe, New Mexico, 87505, the telephone number is 505-476-3200.

Sincerely,

Irvin Gutierrez  
Land Representative



Irvin Gutierrez  
Land Representative

**Chevron U.S.A. Inc.**  
1400 Smith Street  
Houston, Texas 77002  
Tel 713.372.4299  
irvin.gutierrez@chevron.com

**VIA CERTIFIED MAIL – RETURN RECEIPT REQUESTED**

May 22, 2019

Occidental Permian Limited Partnership  
5 Greenway Plaza, Ste 110  
Houston, TX 77046

**RE: Application for Off Lease Measurement of Oil and Gas:**

CB SO 15 22 004 #1H, #2H, #3H  
W/2 Section 15, Township 23 South, Range 28 East and  
W/2 Section 22, Township 23 South, Range 28 East, N.M.P.M.,  
Eddy County, New Mexico

Dear Interest Owner:

This letter will serve as notice that Chevron U.S.A. Inc. has applied for a permit from the Oil Conservation Division in Santa Fe, NM. for Off Lease Measurement of Oil and Gas.

Should your company have any objection, it must be filed in writing within twenty (20) days from the date of this notice. If the Oil Conservation Division determines the application complies with the applicable regulations, then it will be approved. The New Mexico Oil Conservation Division address is 1220 South St. Francis Drive, Santa Fe, New Mexico, 87505, the telephone number is 505-476-3200.

Sincerely,

Irvin Gutierrez  
Land Representative



Irvin Gutierrez  
Land Representative

**Chevron U.S.A. Inc.**  
1400 Smith Street  
Houston, Texas 77002  
Tel 713.372.4299  
irvin.gutierrez@chevron.com

**VIA CERTIFIED MAIL – RETURN RECEIPT REQUESTED**

May 22, 2019

Kathleen Phillips  
P.O. Box 11313  
Midland, TX 79702

**RE: Application for Off Lease Measurement of Oil and Gas:**

CB SO 15 22 004 #1H, #2H, #3H  
W/2 Section 15, Township 23 South, Range 28 East and  
W/2 Section 22, Township 23 South, Range 28 East, N.M.P.M.,  
Eddy County, New Mexico

Dear Interest Owner:

This letter will serve as notice that Chevron U.S.A. Inc. has applied for a permit from the Oil Conservation Division in Santa Fe, NM. for Off Lease Measurement of Oil and Gas.

Should your company have any objection, it must be filed in writing within twenty (20) days from the date of this notice. If the Oil Conservation Division determines the application complies with the applicable regulations, then it will be approved. The New Mexico Oil Conservation Division address is 1220 South St. Francis Drive, Santa Fe, New Mexico, 87505, the telephone number is 505-476-3200.

Sincerely,

Irvin Gutierrez  
Land Representative





Irvin Gutierrez  
Land Representative

**Chevron U.S.A. Inc.**  
1400 Smith Street  
Houston, Texas 77002  
Tel 713.372.4299  
irvin.gutierrez@chevron.com

**VIA CERTIFIED MAIL – RETURN RECEIPT REQUESTED**

May 22, 2019

Jerry Briggs  
5101 PDQ Rd.  
Colorado City, TX 79702

**RE: Application for Off Lease Measurement of Oil and Gas:**

CB SO 15 22 004 #1H, #2H, #3H  
W/2 Section 15, Township 23 South, Range 28 East and  
W/2 Section 22, Township 23 South, Range 28 East, N.M.P.M.,  
Eddy County, New Mexico

Dear Interest Owner:

This letter will serve as notice that Chevron U.S.A. Inc. has applied for a permit from the Oil Conservation Division in Santa Fe, NM. for Off Lease Measurement of Oil and Gas.

Should your company have any objection, it must be filed in writing within twenty (20) days from the date of this notice. If the Oil Conservation Division determines the application complies with the applicable regulations, then it will be approved. The New Mexico Oil Conservation Division address is 1220 South St. Francis Drive, Santa Fe, New Mexico, 87505, the telephone number is 505-476-3200.

Sincerely,

Irvin Gutierrez  
Land Representative



Irvin Gutierrez  
Land Representative

**Chevron U.S.A. Inc.**  
1400 Smith Street  
Houston, Texas 77002  
Tel 713.372.4299  
irvin.gutierrez@chevron.com

**VIA CERTIFIED MAIL – RETURN RECEIPT REQUESTED**

May 22, 2019

Nanergy, LLC  
296 Vermilion Marble Trail  
Buda, TX 78160

**RE: Application for Off Lease Measurement of Oil and Gas:**

CB SO 15 22 004 #1H, #2H, #3H  
W/2 Section 15, Township 23 South, Range 28 East and  
W/2 Section 22, Township 23 South, Range 28 East, N.M.P.M.,  
Eddy County, New Mexico

Dear Interest Owner:

This letter will serve as notice that Chevron U.S.A. Inc. has applied for a permit from the Oil Conservation Division in Santa Fe, NM. for Off Lease Measurement of Oil and Gas.

Should your company have any objection, it must be filed in writing within twenty (20) days from the date of this notice. If the Oil Conservation Division determines the application complies with the applicable regulations, then it will be approved. The New Mexico Oil Conservation Division address is 1220 South St. Francis Drive, Santa Fe, New Mexico, 87505, the telephone number is 505-476-3200.

Sincerely,

Irvin Gutierrez  
Land Representative



Irvin Gutierrez  
Land Representative

**Chevron U.S.A. Inc.**  
1400 Smith Street  
Houston, Texas 77002  
Tel 713.372.4299  
irvin.gutierrez@chevron.com

**VIA CERTIFIED MAIL – RETURN RECEIPT REQUESTED**

May 22, 2019

Nortex Corporation  
3009 Post Oak Blvd.  
Houston, TX 77056

**RE: Application for Off Lease Measurement of Oil and Gas:**

CB SO 15 22 004 #1H, #2H, #3H  
W/2 Section 15, Township 23 South, Range 28 East and  
W/2 Section 22, Township 23 South, Range 28 East, N.M.P.M.,  
Eddy County, New Mexico

Dear Interest Owner:

This letter will serve as notice that Chevron U.S.A. Inc. has applied for a permit from the Oil Conservation Division in Santa Fe, NM. for Off Lease Measurement of Oil and Gas.

Should your company have any objection, it must be filed in writing within twenty (20) days from the date of this notice. If the Oil Conservation Division determines the application complies with the applicable regulations, then it will be approved. The New Mexico Oil Conservation Division address is 1220 South St. Francis Drive, Santa Fe, New Mexico, 87505, the telephone number is 505-476-3200.

Sincerely,

Irvin Gutierrez  
Land Representative



Irvin Gutierrez  
Land Representative

**Chevron U.S.A. Inc.**  
1400 Smith Street  
Houston, Texas 77002  
Tel 713.372.4299  
irvin.gutierrez@chevron.com

**VIA CERTIFIED MAIL – RETURN RECEIPT REQUESTED**

May 22, 2019

RKC, Inc  
7500 E Arapahoe St.  
Centennial, CO 80112

**RE: Application for Off Lease Measurement of Oil and Gas:**

CB SO 15 22 004 #1H, #2H, #3H  
W/2 Section 15, Township 23 South, Range 28 East and  
W/2 Section 22, Township 23 South, Range 28 East, N.M.P.M.,  
Eddy County, New Mexico

Dear Interest Owner:

This letter will serve as notice that Chevron U.S.A. Inc. has applied for a permit from the Oil Conservation Division in Santa Fe, NM. for Off Lease Measurement of Oil and Gas.

Should your company have any objection, it must be filed in writing within twenty (20) days from the date of this notice. If the Oil Conservation Division determines the application complies with the applicable regulations, then it will be approved. The New Mexico Oil Conservation Division address is 1220 South St. Francis Drive, Santa Fe, New Mexico, 87505, the telephone number is 505-476-3200.

Sincerely,

Irvin Gutierrez  
Land Representative



Irvin Gutierrez  
Land Representative

**Chevron U.S.A. Inc.**  
1400 Smith Street  
Houston, Texas 77002  
Tel 713.372.4299  
irvin.gutierrez@chevron.com

**VIA CERTIFIED MAIL – RETURN RECEIPT REQUESTED**

May 22, 2019

Devon Energy Production Company LP  
333 West Sheridan Ave.  
Oklahoma City, OK 73102

**RE: Application for Off Lease Measurement of Oil and Gas:**

CB SO 15 22 004 #1H, #2H, #3H  
W/2 Section 15, Township 23 South, Range 28 East and  
W/2 Section 22, Township 23 South, Range 28 East, N.M.P.M.,  
Eddy County, New Mexico

Dear Interest Owner:

This letter will serve as notice that Chevron U.S.A. Inc. has applied for a permit from the Oil Conservation Division in Santa Fe, NM. for Off Lease Measurement of Oil and Gas.

Should your company have any objection, it must be filed in writing within twenty (20) days from the date of this notice. If the Oil Conservation Division determines the application complies with the applicable regulations, then it will be approved. The New Mexico Oil Conservation Division address is 1220 South St. Francis Drive, Santa Fe, New Mexico, 87505, the telephone number is 505-476-3200.

Sincerely,

Irvin Gutierrez  
Land Representative



Irvin Gutierrez  
Land Representative

**Chevron U.S.A. Inc.**  
1400 Smith Street  
Houston, Texas 77002  
Tel 713.372.4299  
irvin.gutierrez@chevron.com

**VIA CERTIFIED MAIL – RETURN RECEIPT REQUESTED**

May 22, 2019

XTO Holdings, LLC  
810 Houston St.  
Forth Worth, TX 76102

**RE: Application for Off Lease Measurement of Oil and Gas:**

CB SO 15 22 004 #1H, #2H, #3H  
W/2 Section 15, Township 23 South, Range 28 East and  
W/2 Section 22, Township 23 South, Range 28 East, N.M.P.M.,  
Eddy County, New Mexico

Dear Interest Owner:

This letter will serve as notice that Chevron U.S.A. Inc. has applied for a permit from the Oil Conservation Division in Santa Fe, NM. for Off Lease Measurement of Oil and Gas.

Should your company have any objection, it must be filed in writing within twenty (20) days from the date of this notice. If the Oil Conservation Division determines the application complies with the applicable regulations, then it will be approved. The New Mexico Oil Conservation Division address is 1220 South St. Francis Drive, Santa Fe, New Mexico, 87505, the telephone number is 505-476-3200.

Sincerely,

Irvin Gutierrez  
Land Representative





Irvin Gutierrez  
Land Representative

**Chevron U.S.A. Inc.**  
1400 Smith Street  
Houston, Texas 77002  
Tel 713.372.4299  
irvin.gutierrez@chevron.com

**VIA CERTIFIED MAIL – RETURN RECEIPT REQUESTED**

May 22, 2019

Acoma Energy  
4100 E. Mississippi Ave., Suite 400  
Denver, CO 80246

**RE: Application for Off Lease Measurement of Oil and Gas:**

CB SO 15 22 004 #1H, #2H, #3H  
W/2 Section 15, Township 23 South, Range 28 East and  
W/2 Section 22, Township 23 South, Range 28 East, N.M.P.M.,  
Eddy County, New Mexico

Dear Interest Owner:

This letter will serve as notice that Chevron U.S.A. Inc. has applied for a permit from the Oil Conservation Division in Santa Fe, NM. for Off Lease Measurement of Oil and Gas.

Should your company have any objection, it must be filed in writing within twenty (20) days from the date of this notice. If the Oil Conservation Division determines the application complies with the applicable regulations, then it will be approved. The New Mexico Oil Conservation Division address is 1220 South St. Francis Drive, Santa Fe, New Mexico, 87505, the telephone number is 505-476-3200.

Sincerely,

Irvin Gutierrez  
Land Representative



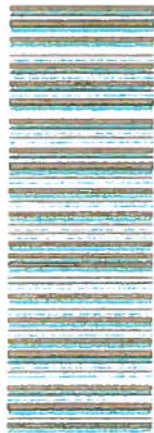


PLACE STICKER AT TOP OF ENVELOPE TO THE RIGHT  
OF THE RETURN ADDRESS. FOLD AT DOTTED LINE

**CERTIFIED MAIL®**

PLACE STICKER AT TOP OF ENVELOPE TO THE RIGHT  
OF THE RETURN ADDRESS. FOLD AT DOTTED LINE

**CERTIFIED MAIL®**



7015 0640 0003 0754 6525  
7015 0640 0003 0754 6525

**U.S. Postal Service™  
CERTIFIED MAIL® RECEIPT**  
Domestic Mail Only

For delivery information, visit our website at [www.usps.com](http://www.usps.com)®.

Certified Mail Fee

Extra Services & Fees (check box, add fee as appropriate)

<input type="checkbox"/> Return Receipt (hardcopy)	\$
<input type="checkbox"/> Return Receipt (electronic)	\$
<input type="checkbox"/> Certified Mail Restricted Delivery	\$
<input type="checkbox"/> Adult Signature Required	\$
<input type="checkbox"/> Adult Signature Restricted Delivery	\$

Postage

Total Postage

Sent To

Street and Apt.

City, State, ZIP

NORTEX CORPORATION  
3009 POST OAK BLVD  
HOUSTON, TX 77056

PS Form 3800, April 2015 PSN 7530-02-000-9047

See Reverse for Instructions

Postmark  
Here

OFFICIAL USE

Certified Mail Fee

Extra Services & Fees (check box, add fee as appropriate)

<input type="checkbox"/> Return Receipt (hardcopy)	\$
<input type="checkbox"/> Return Receipt (electronic)	\$
<input type="checkbox"/> Certified Mail Restricted Delivery	\$
<input type="checkbox"/> Adult Signature Required	\$
<input type="checkbox"/> Adult Signature Restricted Delivery	\$

Postage

Total Postage

Sent To

Street and Apt.

City, State, ZIP

NANERGY, LLC  
296 VERMILION MARBLE TRAIL  
BUDA, TX 78160

PS Form 3800, April 2015 PSN 7530-02-000-9047

See Reverse for Instructions

Postmark  
Here

OFFICIAL USE

**U.S. Postal Service™  
CERTIFIED MAIL® RECEIPT**  
Domestic Mail Only

For delivery information, visit our website at [www.usps.com](http://www.usps.com)®.

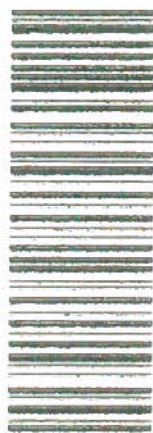
7015 0640 0003 0754 6549  
7015 0640 0003 0754 6549

PLACE STICKER AT TOP OF ENVELOPE TO THE RIGHT  
OF THE RETURN ADDRESS. FOLD AT DOTTED LINE

**CERTIFIED MAIL®**

PLACE STICKER AT TOP OF ENVELOPE TO THE RIGHT  
OF THE RETURN ADDRESS. FOLD AT DOTTED LINE

**CERTIFIED MAIL®**



7015 0640 0003 0754 6549  
7015 0640 0003 0754 6549

**U.S. Postal Service™  
CERTIFIED MAIL® RECEIPT**  
Domestic Mail Only

For delivery information, visit our website at [www.usps.com](http://www.usps.com)®.

Certified Mail Fee

Extra Services & Fees (check box, add fee as appropriate)

<input type="checkbox"/> Return Receipt (hardcopy)	\$
<input type="checkbox"/> Return Receipt (electronic)	\$
<input type="checkbox"/> Certified Mail Restricted Delivery	\$
<input type="checkbox"/> Adult Signature Required	\$
<input type="checkbox"/> Adult Signature Restricted Delivery	\$

Postage

Total Postage

Sent To

Street and Apt.

City, State, ZIP+4®

DEVON ENERGY PRODUCTION  
COMPANY LP  
333 WEST SHERIDAN AVE.  
OKLAHOMA CITY, OK 73102

PS Form 3800, April 2015 PSN 7530-02-000-9047

See Reverse for Instructions

Postmark  
Here

OFFICIAL USE

Certified Mail Fee

Extra Services & Fees (check box, add fee as appropriate)

<input type="checkbox"/> Return Receipt (hardcopy)	\$
<input type="checkbox"/> Return Receipt (electronic)	\$
<input type="checkbox"/> Certified Mail Restricted Delivery	\$
<input type="checkbox"/> Adult Signature Required	\$
<input type="checkbox"/> Adult Signature Restricted Delivery	\$

Postage

Total Postage

Sent To

Street and Apt.

City, State, ZIP+

RKC, INC  
7500 E. ARAPAHOE ST.  
CENTENNIAL, CO 80112

PS Form 3800, April 2015 PSN 7530-02-000-9047

See Reverse for Instructions

Postmark  
Here

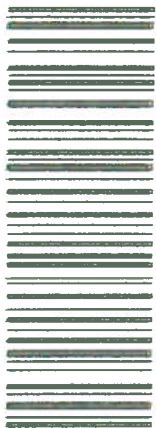
OFFICIAL USE

**U.S. Postal Service™  
CERTIFIED MAIL® RECEIPT**  
Domestic Mail Only

For delivery information, visit our website at [www.usps.com](http://www.usps.com)®.

PLACE STICKER AT TOP OF ENVELOPE TO THE RIGHT  
OF THE RETURN ADDRESS, FOLD AT DOTTED LINE

CERTIFIED MAIL®



7015 0640 0003 0754 6556  
7015 0640 0003 0754 6556

U.S. Postal Service  
**CERTIFIED MAIL® RECEIPT**

Domestic Mail Only

For delivery information, visit our website at [www.usps.com](http://www.usps.com)®.

OFFICIAL USE

Certified Mail Fee

\$

Extra Services & Fees (check box, add fee as appropriate)

- |  |    |  |
|--|----|--|
| <input type="checkbox"/> Return Receipt (hardcopy)           | \$ |  |
| <input type="checkbox"/> Return Receipt (electronic)         | \$ |  |
| <input type="checkbox"/> Certified Mail Restricted Delivery  | \$ |  |
| <input type="checkbox"/> Adult Signature Required            | \$ |  |
| <input type="checkbox"/> Adult Signature Restricted Delivery | \$ |  |

Postmark  
Here

Postage

\$

Total Postage

\$

Sent To

Street and Apt. No.

City, State, ZIP+4®

XTO HOLDINGS LLC  
810 HOUSTON ST.  
FORTH WORTH, TX 76102

PS Form 3800, April 2015 PSN 7530-02-000-9047

See Reverse for Instructions

U.S. Postal Service™  
**CERTIFIED MAIL® RECEIPT**

Domestic Mail Only

For delivery information, visit our website at [www.usps.com](http://www.usps.com)®.

OFFICIAL USE

Certified Mail Fee

\$

Extra Services & Fees (check box, add fee as appropriate)

- |  |    |  |
|--|----|--|
| <input type="checkbox"/> Return Receipt (hardcopy)           | \$ |  |
| <input type="checkbox"/> Return Receipt (electronic)         | \$ |  |
| <input type="checkbox"/> Certified Mail Restricted Delivery  | \$ |  |
| <input type="checkbox"/> Adult Signature Required            | \$ |  |
| <input type="checkbox"/> Adult Signature Restricted Delivery | \$ |  |

Postmark  
Here

Postage

\$

Total Postage and

\$

Sent To

Street and Apt. No.

City, State, ZIP+4®

ACOMA ENERGY  
4100 E. MISSISSIPPI AVE., STE 400  
DENVER, CO 80246

PS Form 3800, April 2015 PSN 7530-02-000-9047

See Reverse for Instructions

PLACE STICKER AT TOP OF ENVELOPE TO THE RIGHT  
OF THE RETURN ADDRESS, FOLD AT DOTTED LINE

CERTIFIED MAIL®



7015 0640 0003 0754 6563  
7015 0640 0003 0754 6563