

GG15J-200203-C-107B 653

Revised March 23, 2017

RECEIVED: 2/3/20	REVIEWER: DM	TYPE: PLC	APP NO: pDM2005846939
------------------	--------------	-----------	-----------------------

ABOVE THIS TABLE FOR OCD DIVISION USE ONLY

NEW MEXICO OIL CONSERVATION DIVISION
 - Geological & Engineering Bureau -
 1220 South St. Francis Drive, Santa Fe, NM 87505

**ADMINISTRATIVE APPLICATION CHECKLIST**

THIS CHECKLIST IS MANDATORY FOR ALL ADMINISTRATIVE APPLICATIONS FOR EXCEPTIONS TO DIVISION RULES AND
 REGULATIONS WHICH REQUIRE PROCESSING AT THE DIVISION LEVEL IN SANTA FE

Applicant: Centennial Resource Production, LLC **OGRID Number:** 372165
Well Name: Mozzarella Fed Com 603H, 702H, 703H **API:** 30-025-46741,30-025-46742,30-025-46757
Pool: Bilbrey Basin;Bone Spring & WC-025 G-09 S213232A;Upper Wolfcamp **Pool Code:** 5695 / 98313

**SUBMIT ACCURATE AND COMPLETE INFORMATION REQUIRED TO PROCESS THE TYPE OF APPLICATION
 INDICATED BELOW**

- 1) **TYPE OF APPLICATION:** Check those which apply for [A]
 A. Location – Spacing Unit – Simultaneous Dedication
☐ NSL ☐ NSP (PROJECT AREA) ☐ NSP (PRORATION UNIT) ☐ SD

B. Check one only for [I] or [II]

[I] Commingling – Storage – Measurement

☐ DHC ☒ CTB ☐ PLC ☐ PC ☐ OLS ☐ OLM

[II] Injection – Disposal – Pressure Increase – Enhanced Oil Recovery

☐ WFX ☐ PMX ☐ SWD ☐ IPI ☐ EOR ☐ PPR

- 2) **NOTIFICATION REQUIRED TO:** Check those which apply.

- A. ☐ Offset operators or lease holders
 B. ☒ Royalty, overriding royalty owners, revenue owners
 C. ☒ Application requires published notice
 D. ☐ Notification and/or concurrent approval by SLO
 E. ☒ Notification and/or concurrent approval by BLM
 F. ☐ Surface owner
 G. ☐ For all of the above, proof of notification or publication is attached, and/or,
 H. ☐ No notice required

FOR OCD ONLY

- ☐ Notice Complete
☐ Application
 Content
 Complete

- 3) **CERTIFICATION:** I hereby certify that the information submitted with this application for administrative approval is **accurate** and **complete** to the best of my knowledge. I also understand that **no action** will be taken on this application until the required information and notifications are submitted to the Division.

Note: Statement must be completed by an individual with managerial and/or supervisory capacity.

Kanicia Schlichting

Print or Type Name

Signature

2/03/2020

Date

720-499-1537

Phone Number

kanicia.schlichting@cdevinc.com

e-mail Address

District I

1625 N. French Drive, Hobbs, NM 88240

District II

811 S. First St., Artesia, NM 88210

District III

1000 Rio Brazos Road, Aztec, NM 87410

District IV1220 S. St Francis Dr, Santa Fe, NM
87505State of New Mexico
Energy, Minerals and Natural Resources Department**OIL CONSERVATION DIVISION**1220 S. St Francis Drive
Santa Fe, New Mexico 87505Form C-107-B
Revised August 1, 2011Submit the original
application to the Santa Fe
office with one copy to the
appropriate District Office.**APPLICATION FOR SURFACE COMMINGLING (DIVERSE OWNERSHIP)**OPERATOR NAME: Centennial Resource Production, LLCOPERATOR ADDRESS: 1001 17th Street, Suite 1800, Denver, CO 80202

APPLICATION TYPE:

☐ Pool Commingling ☐ Lease Commingling ☒ Pool and Lease Commingling ☐ Off-Lease Storage and Measurement (Only if not Surface Commingled)LEASE TYPE: ☐ Fee ☐ State ☒ FederalIs this an Amendment to existing Order? ☐ Yes ☒ No If "Yes", please include the appropriate Order No. _____

Have the Bureau of Land Management (BLM) and State Land office (SLO) been notified in writing of the proposed commingling

☒ Yes ☐ No**(A) POOL COMMINGLING**
Please attach sheets with the following information

(1) Pool Names and Codes	Gravities / BTU of Non-Commingled Production	Calculated Gravities / BTU of Commingled Production	Calculated Value of Commingled Production	Volumes
Bilbrey Basin; Bone Spring 5695	45 / 1076	44 / 1046		2350 / 4700
WC-025 G-09 S213232A; Upper Wolfcamp 98313	43 / 1016			

(2) Are any wells producing at top allowables? ☐ Yes ☒ No(3) Has all interest owners been notified by certified mail of the proposed commingling? ☒ Yes ☐ No.(4) Measurement type: ☒ Metering ☐ Other (Specify)(5) Will commingling decrease the value of production? ☐ Yes ☒ No If "yes", describe why commingling should be approved**(B) LEASE COMMINGLING**

Please attach sheets with the following information

(1) Pool Name and Code.

(2) Is all production from same source of supply? ☐ Yes ☐ No(3) Has all interest owners been notified by certified mail of the proposed commingling? ☐ Yes ☐ No(4) Measurement type: ☐ Metering ☐ Other (Specify)**(C) POOL and LEASE COMMINGLING**

Please attach sheets with the following information

(1) Complete Sections A and E.

(D) OFF-LEASE STORAGE and MEASUREMENT

Please attached sheets with the following information

(1) Is all production from same source of supply? ☐ Yes ☐ No

(2) Include proof of notice to all interest owners.

(E) ADDITIONAL INFORMATION (for all application types)

Please attach sheets with the following information

(1) A schematic diagram of facility, including legal location.

(2) A plat with lease boundaries showing all well and facility locations. Include lease numbers if Federal or State lands are involved.

(3) Lease Names, Lease and Well Numbers, and API Numbers.

I hereby certify that the information above is true and complete to the best of my knowledge and belief.

SIGNATURE: K. SchlichtingTITLE: Sr. Regulatory AnalystDATE: 2/3/2020TYPE OR PRINT NAME Kanicia SchlichtingTELEPHONE NO.: 720-499-1537E-MAIL ADDRESS: kanicia.schlichting@cdevinc.com

APPLICATION FOR SURFACE POOL/LEASE COMMINGLING & OFF LEASE MEASUREMENT

Centennial Resource Production, LLC ("CRP") respectfully requests approval to surface pool/lease commingle oil & gas from the following wells:

	API	WELL NAME	WELL #	LOCATION	POOL CODE/NAME	STATUS	OIL API/BOPD	GAS BTU/MCFPD
1	30-025-46741	MOZZARELLA FED COM	#603H	C-8-22S-32E	[5695] BILBREY BASIN; BONE SPRING	PERMIT APPROVED	45.0 / 1200	1076 / 2400
2	30-025-46742	MOZZARELLA FED COM	#702H	C-8-22S-32E	[98313] WC-025 G-09 S213232A; UPPER WOLFCAMP	PERMIT APPROVED	43.0 / 1150	1016 / 2300
3	30-025-46757	MOZZARELLA FED COM	#703H	C-8-22S-32E	[98313] WC-025 G-09 S213232A; UPPER WOLFCAMP	PERMIT APPROVED	43.0 / 1150	1016 / 2300

Federal Lease Number: NMNM-131588(12.5%)

* current values are estimated. CRP will provide API numbers, actual Gravities, Oil BOPD, BTU, and MCFPD upon completion of the wells.

GENERAL INFORMATION:

- State Lease NM VB-2227-0001 covers 280 acres, N2NW, SWNW, SW section 32, T21S-R32E, Lea County, New Mexico and has a base lease royalty of 20%.
- State Lease NM E0-1932-0001 covers 1,680 acres, including the SENW section 32 T21S-R32E, Lea County, New Mexico and has a base lease royalty of 12.5%.
- Federal lease NM-131588 covers 886.41 acres, N2, W2SW section 5, S2, NE section 6, all in T22S-R32E, Lea County, New Mexico and has a base lease royalty of 12.5%.
- State Lease NM VB-1365-0000 covers 240 acres, including the E2SW, SE section 5 T22S-R32E, Lea County, New Mexico and has a base lease royalty of 12.5%.
- State Lease NM VB-2424-0001 covers 160 acres, NE section 32 T21S R32E, Lea County, New Mexico and has a base lease royalty of 20%.
- State Lease NM VB-2430-0001 covers 120 acres, E2SE, NWSE section 32 T21S R32E, Lea County, New Mexico and has a base lease royalty of 20%.
- State Lease NM B0-399-0069 covers 40 acres, SWSE section 32 T21S R32E, Lea County, New Mexico and has a base lease royalty of 12.5%.
- NENW, E2SW section 32-21S-32E from NM VB-2227-0001, the SENW section 32-21S-32E from NM E0-1932-0001, the E2NW section 5-22S-32E from NMNM 131588, and the E2SW section 5-22S-32E from NM VB-1365-0000 will be communitized for the Wolfcamp formation. A State/Fed form of communitization will be submitted to the Bureau of Land Management for approval.
- W2NE section 32-21S-32E from NM VB-2424-0001, the NWSE section 32-21S-32E from NM VB-2430-0001, the SWSE section 32-21S-32E from NM B0-399-0069, the W2NE section 5-22S-32E from NMNM 131588, and the W2SE section 5-22S-32E from NM VB-1365-0000 will be communitized for the Wolfcamp formation. A State/Fed form of communitization will be submitted to the Bureau of Land Management for approval.

- W2NE section 32-21S-32E from NM VB-2424-0001, the NWSE section 32-21S-32E from NM VB-2430-0001, the SWSE section 32-21S-32E from NM B0-399-0069, the W2NE section 5-22S-32E from NMNM 131588, and the W2SE section 5-22S-32E from NM VB-1365-0000 will be communitized for the Bone Spring formation. A State/Fed form of communitization will be submitted to the Bureau of Land Management for approval.
- The central tank battery to service the subject wells is located on C-8-22S-32E of NMNM 069373.
- Centennial Resource Production, LLC, ConocoPhillips Company, Chevron USA, Inc., Fasken Acquisitions 02, Ltd., Paladin Energy Corporation, Sheridan Holding Company II, LLC, Raven Resources, and RKC, Inc. are the working interest owners in the Mozzarella Fed Com #603H and the owners of the royalty are the State of New Mexico and Bureau of Land Management.
- Centennial Resource Production, LLC, ConocoPhillips Company, Chevron USA, Inc., Fasken Acquisitions 02, Ltd., Paladin Energy Corporation, Sheridan Holding Company II, LLC, Raven Resources, and Marathon Oil Permian, LLC are the working interest owners in the Mozzarella Fed Com #702H and the owners of the royalty are the State of New Mexico and Bureau of Land Management.
- Centennial Resource Production, LLC, ConocoPhillips Company, Chevron USA, Inc., Fasken Acquisitions 02, Ltd., Paladin Energy Corporation, Sheridan Holding Company II, LLC, Raven Resources, RKC, Inc., and Marathon Oil Permian, LLC are the working interest owners in the Mozzarella Fed Com #703H and the owners of the royalty are the State of New Mexico and Bureau of Land Management.
- Ownership in the two spacing units is not identical and notices to all owners have been mailed out. Some owners are unlocatable so publish notification will be required.
- Enclosed herewith is (1) a map that displays the leases, the location of the subject wells, and the proposed CTB, (2) a process flow diagram, (3) the C-102 plat for each of the wells, and (4) the serial register page for NMNM-131588.

Process Narrative – Mozzarella Fed Com CTB

Mozzarella Fed Com 603H

All gross production from the Mozzarella Fed Com 603H flows from the wellhead to a dedicated three-phase separator. The three-phase separator is equipped with oil, gas, and water production meters. After separation and metering, produced fluids are commingled with production from Mozzarella Fed Com 603H/ 702H/ 703H. The fluids from these three wells are stored at and sold from the Mozzarella Fed Com CTB.

Oil

Oil production is measured at the outlet of SEP1 using Coriolis meter OM1. The oil is then commingled in a header and sent to HT1, which is a Heater Treater. Oil from HT1 flows to Tank T1 for storage. Oil is sold from T1 through (1) LACT Unit(s).

Gas

Produced gas is measured at the outlet of SEP1 using an orifice plate meter GM1. Gas is then commingled in a header and routed to a gas sales pipeline. If the pressure of the gas sales pipeline exceeds 125 psi, the gas header lets down to the flare FL1. Flared gas is metered through an orifice plate meter GM4.

Flash gas from HT1 is sent to gas sales pipeline. An upset with gas sales pipeline will cause the flash gas to be let down to flare FL1.

Tank T1 vent gas emissions are routed to VRU1 and then are metered through an orifice plate meter GM5. An upset with VRU1 will cause vent gas to be let down to a low-pressure flare FL2.

Water

Water production is measured at the outlet of SEP1 using a mag meter WM1. Water is then commingled in a header and stored in tank T2. A transfer pump P1 sends water to an SWD after being metered by a turbine meter WM4.

Mozzarella Fed Com 603H gas allocation meter is a Canalta SR. 14.3 orifice meter (S/N **-*****)

Mozzarella Fed Com 603H oil allocation meter is an Endress & Hauser Coriolis meter (S/N **-*****)

Mozzarella Fed Com 603H water allocation meter is an Endress & Hauser Magnetic meter (S/N **-*****)

*Meter numbers will be provided upon installation of meters and completion of the facility.

Mozzarella Fed Com 702H

All gross production from the Mozzarella Fed Com 702H flows from the wellhead to a dedicated three-phase separator. The three-phase separator is equipped with oil, gas, and water production meters. After separation and metering, produced fluids are commingled with production from the Mozzarella Fed Com 603H/ 702H/ 703H. The fluids from these three wells are stored at and sold from the Mozzarella Fed Com CTB.

Oil

Oil production is measured at the outlet of SEP2 using Coriolis meter OM2. The oil is then commingled in a header and sent to HT1, which is a Heater Treater. Oil from HT1 flows to Tank T1 for storage. Oil is sold from T1 through (1) LACT Unit(s).

Gas

Produced gas is measured at the outlet of SEP2 using an orifice plate meter GM2. Gas is then commingled in a header and routed to a gas sales pipeline. If the pressure of the gas sales pipeline exceeds 125 psi, the gas header lets down to the flare FL1. Flared gas is metered through an orifice plate meter GM4.

Flash gas from HT1 is sent to gas sales pipeline. An upset with gas sales pipeline will cause the flash gas to be let down to flare FL1.

Tank T1 vent gas emissions are routed to VRU1 and then are metered through an orifice plate meter GM5. An upset with VRU1 will cause vent gas to be let down to a low-pressure flare FL2.

Water

Water production is measured at the outlet of SEP2 using a mag meter WM2. Water is then commingled in a header and stored in tank T2. A transfer pump P1 sends water to an SWD after being metered by a turbine meter WM4.

Mozzarella Fed Com 702H gas allocation meter is a Canalta SR. 14.3 orifice meter (S/N **-*****)

Mozzarella Fed Com 702H oil allocation meter is an Endress & Hauser Coriolis meter (S/N **-*****)

Mozzarella Fed Com 702H water allocation meter is an Endress & Hauser Magnetic meter (S/N **-*****)

*Meter numbers will be provided upon installation of meters and completion of the facility.

Mozzarella Fed Com 703H

All gross production from the Mozzarella Fed Com 703H flows from the wellhead to a dedicated three-phase separator. The three-phase separator is equipped with oil, gas, and water production meters. After separation and metering, produced fluids are commingled with production from the Mozzarella Fed Com 603H/ 702H/ 703H. The fluids from these three wells are stored at and sold from the Mozzarella Fed Com CTB.

Oil

Oil production is measured at the outlet of SEP3 using Coriolis meter OM3. The oil is then commingled in a header and sent to HT1, which is a Heater Treater. Oil from HT1 flows to Tank T1 for storage. Oil is sold from T1 through (1) LACT Unit(s).

Gas

Produced gas is measured at the outlet of SEP3 using an orifice plate meter GM3. Gas is then commingled in a header and routed to a gas sales pipeline. If the pressure of the gas sales pipeline exceeds 125 psi, the gas header lets down to the flare FL1. Flared gas is metered through an orifice plate meter GM4.

Flash gas from HT1 is sent to gas sales pipeline. An upset with gas sales pipeline will cause the flash gas to be let down to flare FL1.

Tank T1 vent gas emissions are routed to VRU1 and then are metered through an orifice plate meter GM5. An upset with VRU1 will cause vent gas to be let down to a low-pressure flare FL2.

Water

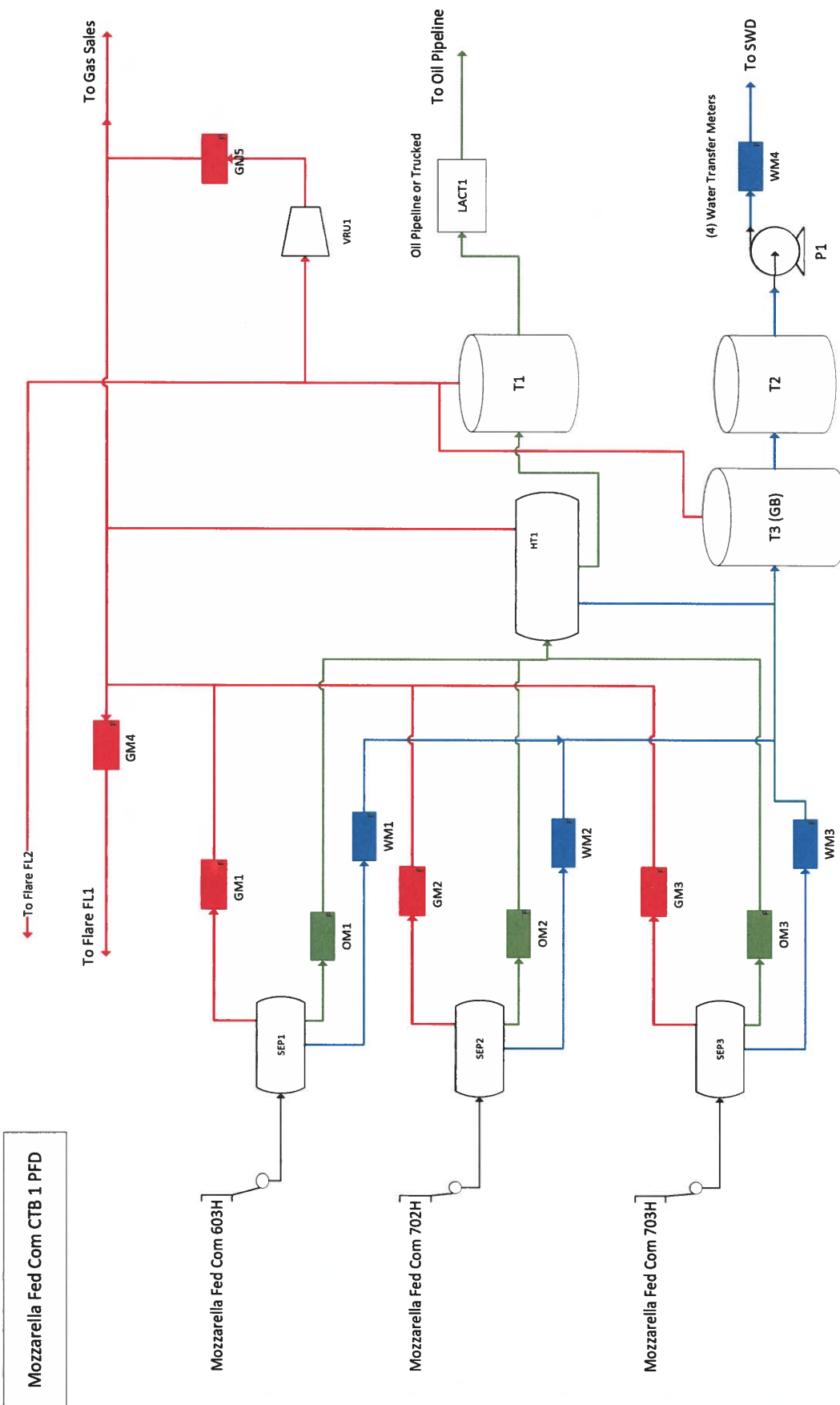
Water production is measured at the outlet of SEP3 using a mag meter WM3. Water is then commingled in a header and stored in tank T2. A transfer pump P1 sends water to an SWD after being metered by a turbine meter WM4.

Mozzarella Fed Com 703H gas allocation meter is a Canalta SR. 14.3 orifice meter (S/N **-*****)

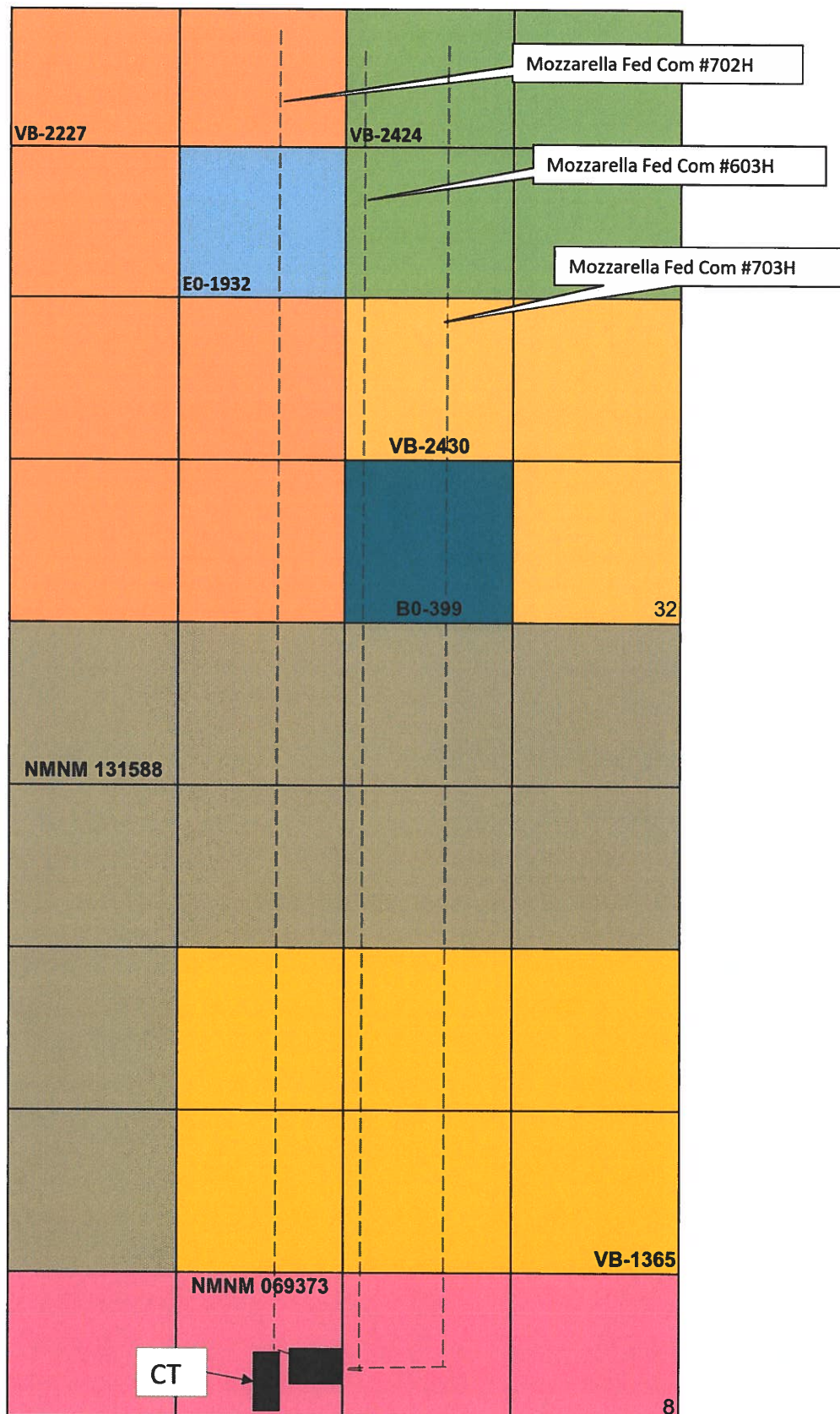
Mozzarella Fed Com 703H oil allocation meter is an Endress & Hauser Coriolis meter (S/N **-*****)

Mozzarella Fed Com 703H water allocation meter is an Endress & Hauser Magnetic meter (S/N **-*****)

*Meter numbers will be provided upon installation of meters and completion of the facility.



Mozzarella Lease Map
Mozzarella Fed Com #603H, Mozzarella Fed Com #702H, Mozzarella Fed Com #703H
Commingle Application Exhibit



Mozzarella Fed Com 603H, 702H, 703H Notice List

Name	Address	Certified Mail Number
ConocoPhillips Company	P.O. Box 2197 Houston, TX 77252	7019 1120 0000 2724 6426
Chevron USA, Inc.	P.O. Box 730436 Dallas, TX 75373-0436	7019 1120 0000 2724 6433
Fasken Acquisitions 02, Ltd.	303 W Wall St. Midland, TX 79701	7018 3070 0001 7651 6604
Paladin Energy Corp.	10290 Monroe Drive Dallas, TX 75229	7018 3090 0001 7651 6611
Sheridan Holding Company II, LLC	9 Greenway Plaza, Suite 1300 Houston, TX 77046	7018 3090 0001 7651 6628
Raven Resources, LLC	13220 North MacArthur Blvd. Oklahoma City, OK 73142	7018 3090 0001 7651 6635
RKC, Inc.	7500 E Arapahoe Rd. #380 Centennial, CO 80112	7018 3090 0001 7651 6642
Marathon Oil Permian, LLC	5555 San Felipe Street Houston, TX 77056	7018 3090 0001 7651 6659

**LEGAL NOTICE
FEBUARY 1, 2020**

Centennial Resource Production, LLC is applying to surface/pool commingle three wells to a central tank battery in Lea County, New Mexico. The central tank battery is located West of the Mozzarella Drill Island. The three wells, details and locations are the following:

Mozzarella Fed Com 603H located in the northwest quarter of section 8, T22S, R32E, Unit C, 954 FNL & 2189 FWL. Bilbrey Basin; Bone Spring

Mozzarella Fed Com 702H located in the northwest quarter of section 8, T22S, R32E, Unit C, 954 FNL & 2159 FWL. WC-025 G-095 S213232A; Upper Wolfcamp

Mozzarella Fed Com 703H located in the northwest quarter of section 8, T22S, R32E, Unit C, 954 FNL & 2219 FWL. WC-025 G-095 S213232A; Upper Wolfcamp

Interested parties must file objections or requests for hearing with the New Mexico Oil Conservation Division, 1220 South Saint Francis Dr., Santa Fe, NM 87505, within 20 days. Additional information can be obtained by contacting Kanicia Schlichting, Centennial Resource Production, LLC, 1001 17th Street, Suite 1800, Denver, CO 80202. Phone number is 720-499-1537.

#35151

District I
1625 N. French Dr., Hobbs, NM 88240
Phone: (575) 393-6161 Fax: (575) 393-0720

District II
811 S. First St., Artesia, NM 88210
Phone: (575) 748-1283 Fax: (575) 748-0720

District III
1000 Rio Brazos Road, Aztec, NM 87410
Phone: (505) 334-6178 Fax: (505) 334-6170

District IV
1220 S. St. Francis Dr., Santa Fe, NM 87505
Phone: (505) 476-3460 Fax: (505) 476-3462

State of New Mexico
Energy, Minerals & Natural Resources Department
OIL CONSERVATION DIVISION
1220 South St. Francis Dr.
Santa Fe, NM 87505

Form C-102
Revised August 1, 2011
Submit one copy to appropriate
District Office

☐ AMENDED REPORT

WELL LOCATION AND ACREAGE DEDICATION PLAT

API Number 30-025-46741	Pool Code 5695	Pool Name Bilbrey Basin: Bone Spring
Property Code 326979	Property Name MOZZARELLA FED COM	Well Number 603H
GRID No. 372165	Operator Name CENTENNIAL RESOURCE PRODUCTION, LLC	Elevation 3703.7

"Surface Location

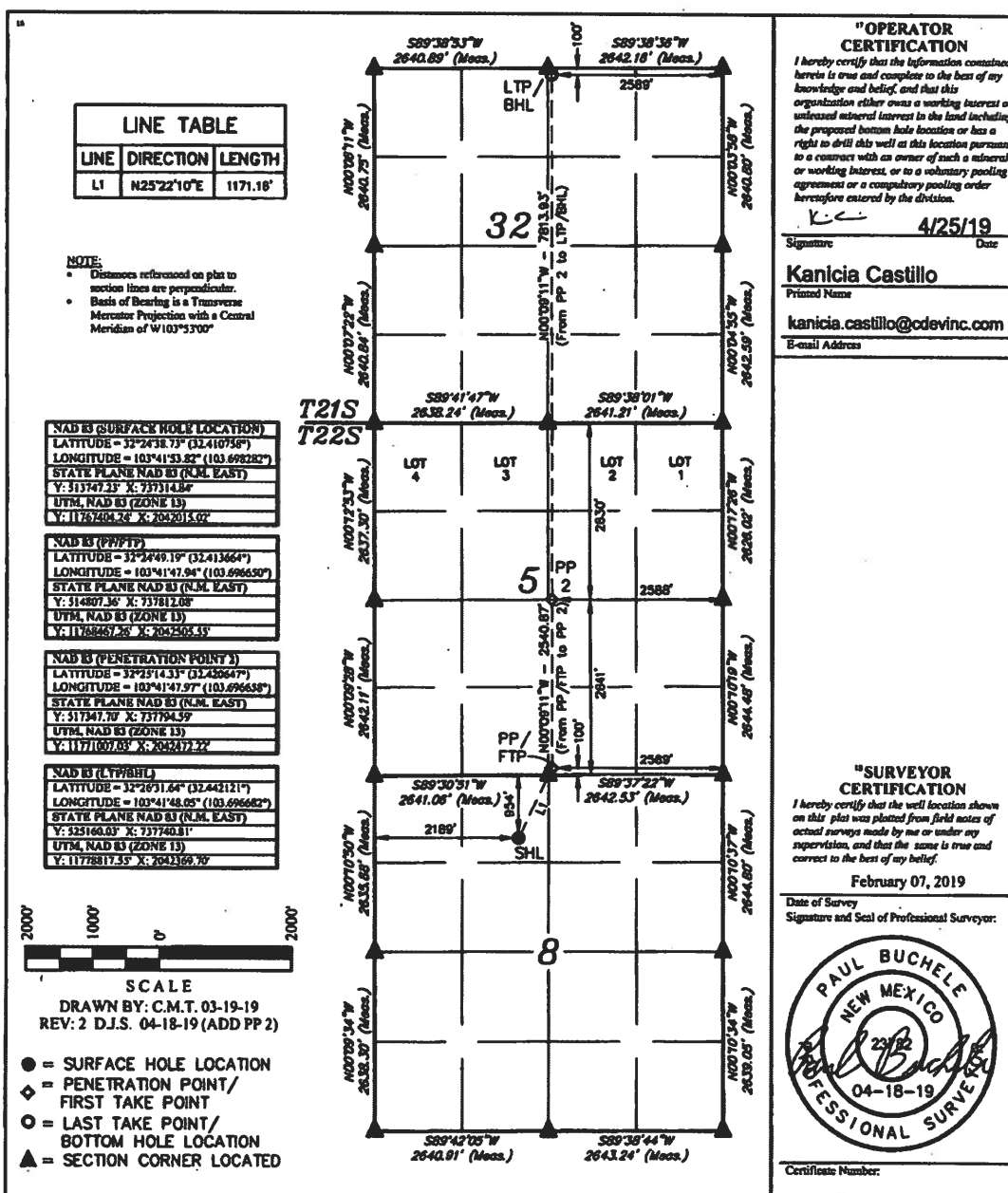
UL or lot no.	Section	Township	Range	Lot Idn	Feet from the	North/South line	Feet from the	East/West line	County
C	8	22S	32E		954	NORTH	2189	WEST	LEA

"Bottom Hole Location If Different From Surface

UL or lot no.	Section	Township	Range	Lot Idn	Feet from the	North/South line	Feet from the	East/West line	County
B	32	21S	32E		100	NORTH	2589	EAST	LEA

¹¹ Dedicated Acres: 319.67 ¹² Joint or Infill: ¹³ Consolidation Code: ¹⁴ Order No.:

No allowable will be assigned to this completion until all interests have been consolidated or a non-standard unit has been approved by the division.



District I
1625 N. French Dr., Hobbs, NM 88240
Phone: (505) 393-6161 Fax: (575) 393-0720

District II
811 S. First St., Artesia, NM 88210
Phone: (505) 748-1283 Fax: (575) 748-9720

District III
1000 Rio Brazos Road, Aztec, NM 87410
Phone: (505) 334-6178 Fax: (505) 334-6170

District IV
1220 S. St. Francis Dr., Santa Fe, NM 87505
Phone: (505) 476-3460 Fax: (505) 476-3462

State of New Mexico
Energy, Minerals & Natural Resources Department
OIL CONSERVATION DIVISION
1220 South St. Francis Dr.
Santa Fe, NM 87505

Form C-102
Revised August 1, 2011
Submit one copy to appropriate
District Office

☐ AMENDED REPORT

HOBBS OCD

JAN 10 2020

WELL LOCATION AND ACREAGE DEDICATION PLAT

AP1 Number 30-00246742		Pool Code 98313	Pool Name WC-025 G-095 S213232A Upper Wolfcamp R	
Property Code 320979		Property Name MOZZARELLA FED COM		Well Number 702H
OGRID No. 372165		Operator Name CENTENNIAL RESOURCE PRODUCTION, LLC		Elevation 3704.0'

▪ Surface Location

UL or lot no. C	Section 8	Township 22S	Range 32E	Lot idn	Feet from the 954	North/South line NORTH	Feet from the 2159	East/West line WEST	County LEA
--------------------	--------------	-----------------	--------------	---------	----------------------	---------------------------	-----------------------	------------------------	---------------

"Bottom Hole Location If Different From Surface

UL or lot no. C	Section 32	Township 21S	Range 32E	Lot Ida	Feet from the 100	North/South line NORTH	Feet from the 2061	East/West line WEST	County LEA
--------------------	---------------	-----------------	--------------	---------	----------------------	---------------------------	-----------------------	------------------------	---------------

¹² Dedicated Acres 319.67	¹³ Joint or Infill	¹⁴ Consolidation Code	¹⁵ Order No.
---	-------------------------------	----------------------------------	-------------------------

No allowable will be assigned to this completion until all interests have been consolidated or a non-standard unit has been approved by the division.

LINE TABLE		
LINE	DIRECTION	LENGTH
L1	N05°30'58"W	1056.07'

NOTE:

- Distances referenced on plot to section lines are perpendicular.
- Basis of Bearing is a Transverse Mercator Projection with a Central Meridian of W103°53'00"

NAD 83 (SURFACE HOLE LOCATION)
LATITUDE = 32°24'58.73" (32.410758°)
LONGITUDE = 103°41'54.17" (103.698379°)
STATE PLANE NAD 83 (N.M. EAST)
Y: 515746.85' X: 737284.85'
UTM, NAD 83 (ZONE 18)
Y: 11761401.79' X: 2041983.03'

NAD 83 (F99TF)
 LATITUDE = 32°24'49.15" (32.413635°)
 LONGITUDE = 103°41'55.35" (103.698703°)
 STATE PLANE NAD 83 (N.M. EAST)
 Y: 514799.42 X: 731718.73
 UTM, NAD 83 (ZONE 13)
 Y: 1176643.58 X: 7081872.17

NAD 83 (PENETRATION POINT 3)
LATITUDE = 32°25'14.39" (32.420636°)
LONGITUDE = 103°41'55.36" (103.698710°)
STATE PLANE NAD 83 (N.M. EAST)
Y: 517339.58 X: 737161.38
UTM, NAD 83 (ZONE 13)
Y: 1177099.16 X: 704189.18

NAD 83 (LTP/BHL)
 LATITUDE = 32°26'31.61" (32.442113°)
 LONGITUDE = 103°41'55.44" (103.698733°)
 STATE PLANE NAD 83 (N.M. EAST)
 Y: 325131.47 X: 737108.03
 UTM, NAD 83 (ZONE 15)
 Y: 11778807.04 X: 2041737.07

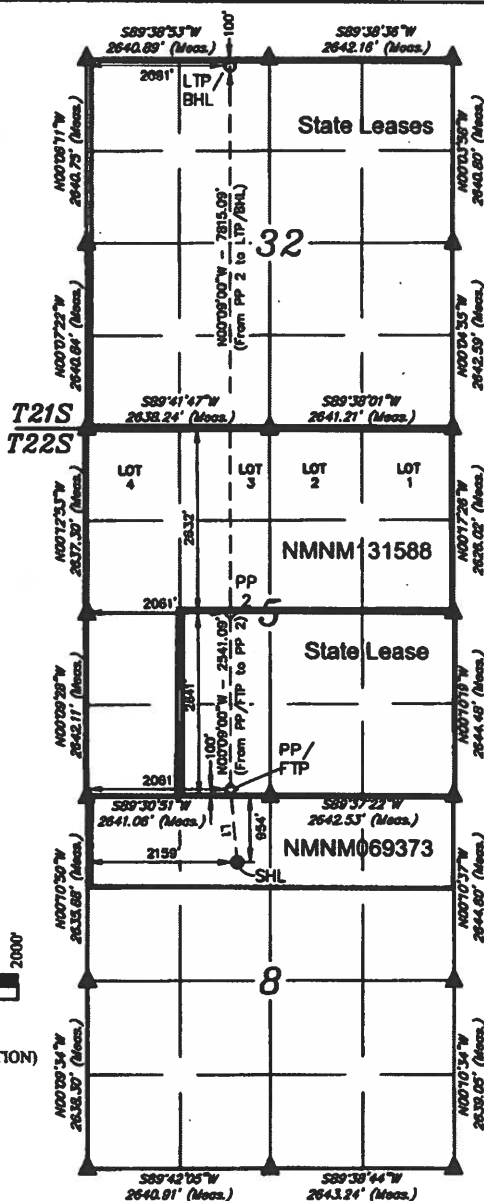


SCALE

DRAWN BY: C.M.T. 03-19-19

REV: 2 J.N. 04-26-19 (TYPO CORRECTION)

- = SURFACE HOLE LOCATION
- ◆ = PENETRATION POINT/
FIRST TAKE POINT
- = LAST TAKE POINT/
BOTTOM HOLE LOCATION
- ▲ = SECTION CORNER LOCATED



"OPERATOR CERTIFICATION

I hereby certify that the information contained herein is true and complete to the best of my knowledge and belief, and that this organization either owns a working interest or unleased mineral interest in the land including the proposed bottom hole location or has a right to drill this well at this location pursuant to a contract with an owner of such a mineral or working interest, or to a voluntary pooling agreement or a compulsory pooling order heretofore entered by the Division.

K.C. 4/25/19

Kanicia Castillo
Printed Name

kanica.castillo@odevinc.com
E-mail Address

**"SURVEYOR
CERTIFICATION**

I hereby certify that the well location shown on this plat was plotted from field notes of actual surveys made by me or under my supervision, and that the same is true and correct to the best of my belief.

February 07, 2019

Date of Survey
Signature and Seal of Professional Surveyor.



Certificate Number

District I
1625 N. French Dr., Hobbs, NM 88240
Phone: (575) 393-6161 Fax: (575) 393-0720
District II
811 S. First St., Artesia, NM 88210
Phone: (575) 748-1283 Fax: (575) 748-9720
District III
1000 Rio Brazos Road, Aztec, NM 87410
Phone: (505) 334-6178 Fax: (505) 334-6170
District IV
1220 S. St. Francis Dr., Santa Fe, NM 87505
Phone: (505) 476-3460 Fax: (505) 476-3462

State of New Mexico
Energy, Minerals & Natural Resources Department
OIL CONSERVATION DIVISION
1220 South St. Francis Dr.
Santa Fe, NM 87505

Form C-102
Revised August 1, 2011
Submit one copy to appropriate
District Office

☐ AMENDED REPORT

WELL LOCATION AND ACREAGE DEDICATION PLAT

1 API Number 30-025-46757		2 Pool Code 98313		3 Pool Name WC-025 G-095 S213232A: Upper Wolfcamp	
4 Property Code 328979		5 Property Name MOZZARELLA FED COM		6 Well Number 703H	
7 OGRID No. 372165		8 Operator Name CENTENNIAL RESOURCE PRODUCTION, LLC		9 Elevation 3703.2'	

"Surface Location

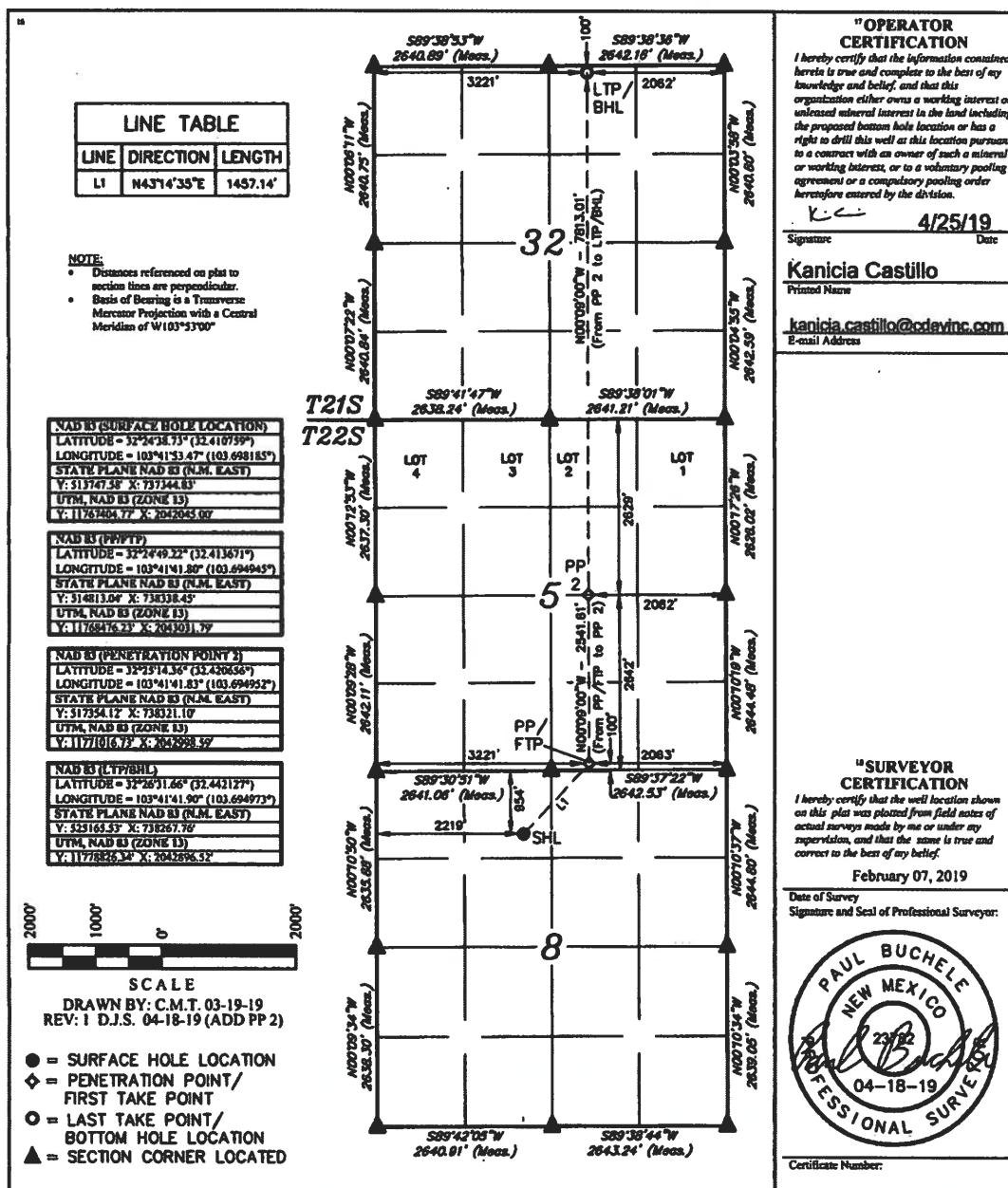
UL or lot no.	Section	Township	Range	Lot Idn	Feet from the	North/South line	Feet from the	East/West line	County
C	8	22S	32E		954	NORTH	2219	WEST	LEA

"Bottom Hole Location If Different From Surface

UL or lot no.	Section	Township	Range	Lot Idn	Feet from the	North/South line	Feet from the	East/West line	County
B	32	21S	32E		100	NORTH	2062	EAST	LEA

11 Dedicated Acres	12 Joints or Infill	13 Consolidation Code	14 Order No.
319.67			

No allowable will be assigned to this completion until all interests have been consolidated or a non-standard unit has been approved by the division.



**"OPERATOR
CERTIFICATION**

I hereby certify that the information contained herein is true and complete to the best of my knowledge and belief, and that this organization either owns a working interest or unleased mineral interest in the land including the proposed bottom hole location or has a right to drill this well at this location pursuant to a contract with an owner of such a mineral or working interest, or to a voluntary pooling agreement or a compulsory pooling order heretofore entered by the division.

Signature: *K. Castillo* Date: **4/25/19**

Printed Name: **Kanicia Castillo**

E-mail Address: **kanicia.castillo@odevnc.com**

**"SURVEYOR
CERTIFICATION**

I hereby certify that the well location shown on this plat was plotted from field notes of actual surveys made by me or under my supervision, and that the same is true and correct to the best of my belief.

February 07, 2019
Date of Survey
Signature and Seal of Professional Surveyor:



Certificate Number:



Serial Register Page

Dec 30, 2019

01 12-22-1987;101STAT1330;30USC181 ET SE

Case Type: O&g lse comp pd -1987

Serial Number: NMNM 131588

Commodity: Oil & gas

Acres: 886.410

Disposition: Authorized

Lessee

<u>Owner Name</u>	<u>Street</u>	<u>City</u>	<u>State</u>	<u>Zip</u>	<u>Net Acres</u>	<u>%Int</u>
CENTENNIAL RESOURCES PRODUCTION LLC	1001 17TH ST STE 1800	DENVER	CO	80202-2058	620.487	70.00
MARATHON OIL PERMIAN LLC	5555 SAN FELIPE ST	HOUSTON	TX	77056-2701	265.923	30.00

Operating Rights

<u>Owner Name</u>	<u>Street</u>	<u>City</u>	<u>State</u>	<u>Zip</u>	<u>Net Acres</u>	<u>%Int</u>
CENTENNIAL RESOURCES PRODUCTION LLC	1001 17TH ST STE 1800	DENVER	CO	80202-2058	0.000	0.00
MARATHON OIL PERMIAN LLC	5555 SAN FELIPE ST	HOUSTON	TX	77056-2701	0.000	0.00
OXY USA INC	5 GREENWAY PLZ STE 110	HOUSTON	TX	77046-0521	0.000	0.00
OXY Y-1 CO	5 GREENWAY PLZ STE 110	HOUSTON	TX	77046-0521	0.000	0.00

Meridian:	New Mex	State:	NM	County:	Lea
Township:	22 S	Range:	32 E	Admin Agency	
Section:	5	S2N2,W2SW;		BUREAU OF LAND MGMT	
Section:	5	1-4;		BUREAU OF LAND MGMT	
Section:	6	S2NE,E2SW,SE;		BUREAU OF LAND MGMT	
Section:	6	1,2,6,7;		BUREAU OF LAND MGMT	

<u>Code</u>	<u>Action</u>	<u>Date</u>	<u>Remarks</u>
387	Case established	11/20/2013	201310012;
143	Bonus bid payment recd	11/21/2013	\$1774.00;
191	Sale held	11/21/2013	
267	Bid received	11/21/2013	\$8337800.00;
143	Bonus bid payment recd	12/5/2013	\$8336026.00;
237	Lease issued	1/22/2014	
974	Automated record verif	1/22/2014	DME
496	Fund code	2/1/2014	05;145003
530	Rlty rate - 12 1/2%	2/1/2014	

<u>Code</u>	<u>Action</u>	<u>Date</u>	<u>Remarks</u>
868	Effective date	2/1/2014	
140	Asgn filed	4/7/2014	FEDERAL A/DEVON ENE;1
139	Asgn approved	5/8/2014	EFF 05/01/14;
974	Automated record verif	5/8/2014	LBO
140	Asgn filed	4/6/2017	DEVON ENE/CROWN OIL;1
139	Asgn approved	5/11/2017	EFF 05/01/17;
974	Automated record verif	5/11/2017	RCC
246	Lease committed to ca	5/1/2018	NMNM138602
650	Held by prod - actual	8/7/2018	/1/
658	Memo of 1st prod-actual	8/7/2018	/1/NMNM138602;#1H
932	Trf oper rgts filed	10/5/2018	DEVON ENE/CENTENNIA;1
140	Asgn filed	3/7/2019	CROWN OIL/MARATHON;1
932	Trf oper rgts filed	3/7/2019	CROWN OIL/MARATHON;1
933	Trf oper rgts approved	3/12/2019	EFF 11/01/18;
974	Automated record verif	3/12/2019	JY
140	Asgn filed	3/25/2019	CROWN OIL/CENTENNIA;1
643	Production determination	5/9/2019	/1/
932	Trf oper rgts filed	5/24/2019	DEVON ENERG/OXY USA;1
140	Asgn filed	6/5/2019	DEVON ENE/CENTENNIA;1
139	Asgn approved	7/2/2019	EFF 04/01/19;1
269	Asgn denied	7/2/2019	CROWN/CENT NO RT;
933	Trf oper rgts approved	7/2/2019	EFF 04/01/19;
974	Automated record verif	7/2/2019	AMV
933	Trf oper rgts approved	8/16/2019	EFF 06/01/19;
974	Automated record verif	8/16/2019	PM
139	Asgn approved	9/9/2019	EFF 07/01/19;
974	Automated record verif	9/9/2019	KB

Remarks

STIPULATIONS ATTACHED TO LEASE:

NM-11-LN SPECIAL CULTURAL RESOURCE

SENM-S-1 POTASH STIPULATION

SENM-S-15 WILDLIFE HABITAT PROJECTS

SENM-S-17 SLOPES OR FRAGILE SOILS

SENM-S-22 PRAIRIE CHICKENS

SENM-S-34 ZONE 3 - POD

03/12/2019 RENTAL PAID 02/01/2019

08/16/2019 - OR WORKSHEET DONE

08/16/2019 - OXY USA SW/NM CFO BOND NMB001508

Form 3160-5
(June 2015)UNITED STATES
DEPARTMENT OF THE INTERIOR
BUREAU OF LAND MANAGEMENTFORM APPROVED
OMB NO. 1004-0137
Expires: January 31, 2018**SUNDRY NOTICES AND REPORTS ON WELLS**
Do not use this form for proposals to drill or to re-enter an abandoned well. Use form 3160-3 (APD) for such proposals.5. Lease Serial No.
NMNM131588

6. If Indian, Allottee or Tribe Name

7. If Unit or CA/Agreement, Name and/or No.

SUBMIT IN TRIPLICATE - Other instructions on page 2

1. Type of Well

☒ Oil Well ☐ Gas Well ☐ Other8. Well Name and No.
MOZZARELLA FEDERAL COM 603H

2. Name of Operator

CENTENNIAL RESOURCE PRODUCTION, LLC

Contact: KANICIA CASTILLO

Email: kanicia.castillo@cdevinc.com

9. API Well No.
30-025-46741

3a. Address

1001 17 STREET SUITE 1800
DENVER, CO 80202

3b. Phone No. (include area code)

Ph: 720.499.1537

10. Field and Pool or Exploratory Area
BILBREY BASIN/BONE SPRING

4. Location of Well (Footage, Sec., T., R., M., or Survey Description)

Sec 8 T22S R32E Mer NMP NENW 954FNL 2189FWL
32.410758 N Lat, 103.698282 W Lon

11. County or Parish, State

LEA COUNTY, NM

12. CHECK THE APPROPRIATE BOX(ES) TO INDICATE NATURE OF NOTICE, REPORT, OR OTHER DATA

TYPE OF SUBMISSION	TYPE OF ACTION			
<input checked="" type="checkbox"/> Notice of Intent	<input type="checkbox"/> Acidize	<input type="checkbox"/> Deepen	<input type="checkbox"/> Production (Start/Resume)	<input type="checkbox"/> Water Shut-Off
<input type="checkbox"/> Subsequent Report	<input type="checkbox"/> Alter Casing	<input type="checkbox"/> Hydraulic Fracturing	<input type="checkbox"/> Reclamation	<input type="checkbox"/> Well Integrity
<input type="checkbox"/> Final Abandonment Notice	<input type="checkbox"/> Casing Repair	<input type="checkbox"/> New Construction	<input type="checkbox"/> Recomplete	<input checked="" type="checkbox"/> Other
	<input type="checkbox"/> Change Plans	<input type="checkbox"/> Plug and Abandon	<input type="checkbox"/> Temporarily Abandon	Surface Commingling
	<input type="checkbox"/> Convert to Injection	<input type="checkbox"/> Plug Back	<input type="checkbox"/> Water Disposal	

13. Describe Proposed or Completed Operation: Clearly state all pertinent details, including estimated starting date of any proposed work and approximate duration thereof. If the proposal is to deepen directionally or recompleat horizontally, give subsurface locations and measured and true vertical depths of all pertinent markers and zones. Attach the Bond under which the work will be performed or provide the Bond No. on file with BLM/BIA. Required subsequent reports must be filed within 30 days following completion of the involved operations. If the operation results in a multiple completion or recompleat in a new interval, a Form 3160-4 must be filed once testing has been completed. Final Abandonment Notices must be filed only after all requirements, including reclamation, have been completed and the operator has determined that the site is ready for final inspection.

Centennial Resource Production, LLC respectfully requests Surface and Pool commingle the following wells:

Mozzarella Federal Com 603H
API# 30-025-46741
Field & Pool: Bibrey Basin; Bone Spring
Unit C, Sec 8, T22S, R32E, NENW

Mozzarella Federal Com 702H
API# 30-025-46742
Field & Pool: WC-025 G-09 S213232A; Upper Wolfcamp
Unit C, Sec 8, T22S, R32E, NENW

14. I hereby certify that the foregoing is true and correct.

**Electronic Submission #501839 verified by the BLM Well Information System
For CENTENNIAL RESOURCE PRODUCTION, sent to the Hobbs**

Name (Printed/Typed) KANICIA CASTILLO

Title SR REGULATORY ANALYST

Signature (Electronic Submission)

Date 02/03/2020

THIS SPACE FOR FEDERAL OR STATE OFFICE USE

Approved By _____	Title _____	Date _____
Conditions of approval, if any, are attached. Approval of this notice does not warrant or certify that the applicant holds legal or equitable title to those rights in the subject lease which would entitle the applicant to conduct operations thereon.		Office _____

Title 18 U.S.C. Section 1001 and Title 43 U.S.C. Section 1212, make it a crime for any person knowingly and willfully to make to any department or agency of the United States any false, fictitious or fraudulent statements or representations as to any matter within its jurisdiction.

(Instructions on page 2)

**** OPERATOR-SUBMITTED ** OPERATOR-SUBMITTED ** OPERATOR-SUBMITTED ****

Additional data for EC transaction #501839 that would not fit on the form

32. Additional remarks, continued

Mozzarella Federal Com 703H
API# 30-025-46757
Field & Pool: WC-025 G-09 S213232A; Upper Wolfcamp
Unit C, Sec 8, T22S, R32E, NENW

These wells will need surface and pool commingling. These wells will be drilled on a drill island so the BLM requirement is to build facility off the drilled island. Our facility will hold these three wells, which have their own separators for measurement. The gas sales meter will be off pad, so we will be asking for off lease sales for gas.

Consolidating production will extend the economic life for these wells and lessen surface disturbance.

Commingle will not reduce value of production.

All interest owners have been notified.

Lease Royalty Rate is 12-1/2%.

Please see attachments.