

Office  
 District I – (575) 393-6161  
 1625 N. French Dr., Hobbs, NM 88240  
 District II – (575) 748-1283  
 811 S. First St., Artesia, NM 88210  
 District III – (505) 334-6178  
 1000 Rio Brazos Rd., Aztec, NM 87410  
 District IV – (505) 476-3460  
 1220 S. St. Francis Dr., Santa Fe, NM  
 87505

State of New Mexico  
 Energy, Minerals and Natural Resources

Form C-103  
 Revised July 18, 2013

OIL CONSERVATION DIVISION  
 1220 South St. Francis Dr.  
 Santa Fe, NM 87505

<b>SUNDRY NOTICES AND REPORTS ON WELLS</b> (DO NOT USE THIS FORM FOR PROPOSALS TO DRILL OR TO DEEPEN OR PLUG BACK TO A DIFFERENT RESERVOIR. USE "APPLICATION FOR PERMIT" (FORM C-101) FOR SUCH PROPOSALS.)		WELL API NO. 30-025-46752
1. Type of Well: Oil Well <input checked="" type="checkbox"/> Gas Well <input type="checkbox"/> Other <input type="checkbox"/>		5. Indicate Type of Lease STATE <input checked="" type="checkbox"/> FEE <input type="checkbox"/>
2. Name of Operator EOG Resources, Inc.		6. State Oil & Gas Lease No. Hemlock 32 State
3. Address of Operator P.O. Box 2267 Midland, Texas 79702		7. Lease Name or Unit Agreement Name VB-1169-0001 & V0-6276-0001
4. Well Location Unit Letter _____ M _____ : _____ 304 _____ feet from the _____ South _____ line and _____ 501 _____ feet from the _____ West _____ line Section _____ 32 _____ Township _____ 23S _____ Range _____ 33E _____ NMPM _____ Lea _____ County _____		8. Well Number 201H
11. Elevation (Show whether DR, RKB, RT, GR, etc.)		9. OGRID Number 7377
10. Pool name or Wildcat Triple X; Bone Spring [59900]		

12. Check Appropriate Box to Indicate Nature of Notice, Report or Other Data

<b>NOTICE OF INTENTION TO:</b> PERFORM REMEDIAL WORK <input type="checkbox"/> PLUG AND ABANDON <input type="checkbox"/> TEMPORARILY ABANDON <input type="checkbox"/> CHANGE PLANS <input type="checkbox"/> PULL OR ALTER CASING <input type="checkbox"/> MULTIPLE COMPL <input type="checkbox"/> DOWNHOLE COMMINGLE <input type="checkbox"/> CLOSED-LOOP SYSTEM <input type="checkbox"/> OTHER: Surface Commingle <input checked="" type="checkbox"/>		<b>SUBSEQUENT REPORT OF:</b> REMEDIAL WORK <input type="checkbox"/> ALTERING CASING <input type="checkbox"/> COMMENCE DRILLING OPNS. <input type="checkbox"/> P AND A <input type="checkbox"/> CASING/CEMENT JOB <input type="checkbox"/> OTHER: <input type="checkbox"/>	
---	--	---	--

13. Describe proposed or completed operations. (Clearly state all pertinent details, and give pertinent dates, including estimated date of starting any proposed work). SEE RULE 19.15.7.14 NMAC. For Multiple Completions: Attach wellbore diagram of proposed completion or recompletion.

EOG Resources, Inc. respectfully requests to amend PLC-620 to include the following wells:

Hemlock 32 State 201H	API: 30-025-46752	Triple X; Bone Spring [59900]
Hemlock 32 State 202H	API: 30-025-46753	Triple X; Bone Spring [59900]
Hemlock 32 State 203H	API: 30-025-46754	Triple X; Bone Spring [59900]
Hemlock 32 State 204H	API: 30-025-46755	Triple X; Bone Spring [59900]
Hemlock 32 State 503H	API: 30-025-46756	Triple X; Bone Spring [59900]
Yarrow 32 State 705H	API: 30-025-45273	WC-025 G-09 S243310P; Upper Wolfcamp [98135]

Please see attached supporting documentation. These wells have diverse ownership. State Land Office and all owners have received notice of this application.

Spud Date:  Rig Release Date:

I hereby certify that the information above is true and complete to the best of my knowledge and belief.

SIGNATURE Lisa Trascher TITLE Regulatory Specialist DATE 2/28/2020

Type or print name Lisa Trascher E-mail address: lisa\_trascher@eogresources.com PHONE: 432-247-6331

**For State Use Only**

APPROVED BY: \_\_\_\_\_ TITLE \_\_\_\_\_ DATE \_\_\_\_\_

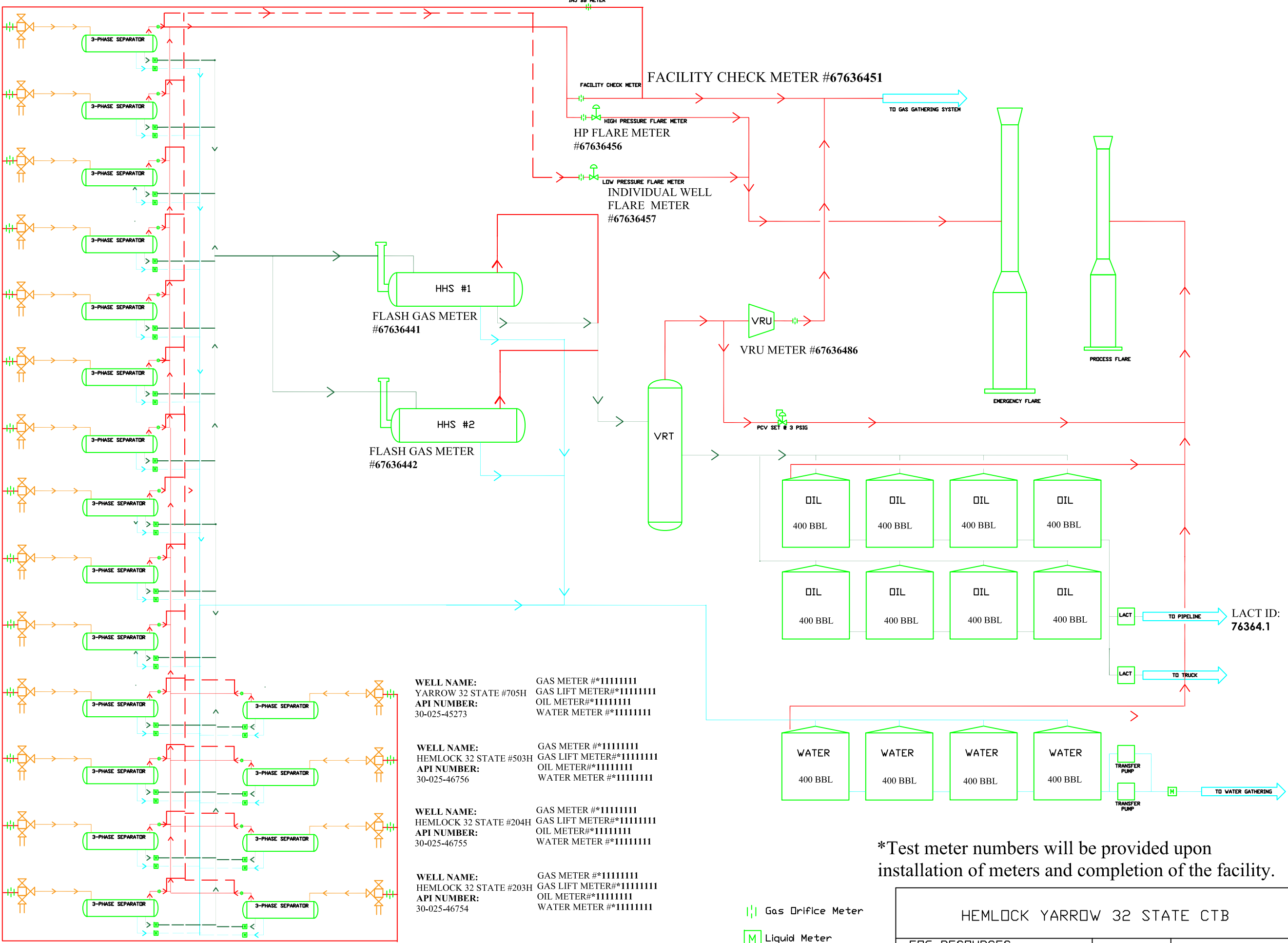
Conditions of Approval (if any):

Page 2 of 10  
Received by OCD: 2/28/2020 7:57:44 AM

# FACILITY NAME: HEMLOCK YARROW 32 STATE CTB

INJ BB METER #67636481

WELL NAME: HEMLOCK 32 STATE #701H API NUMBER: 30-025-44343	GAS METER #67636401 GAS LIFT METER#67636421 OIL METER#10-74567 WATER METER #40-74567
WELL NAME: HEMLOCK 32 STATE #702H API NUMBER: 30-025-44344	GAS METER #67636402 GAS LIFT METER#67636422 OIL METER#10-74568 WATER METER #40-74568
WELL NAME: YARROW 32 STATE #701H API NUMBER: 30-025-45269	GAS METER #67636403 GAS LIFT METER#67636423 OIL METER#10-76069 WATER METER #40-76069
WELL NAME: YARROW 32 STATE #702H API NUMBER: 30-025-45270	GAS METER #67636404 GAS LIFT METER#67636424 OIL METER#10-76070 WATER METER #40-76070
WELL NAME: YARROW 32 STATE #703H API NUMBER: 30-025-45271	GAS METER #67636407 GAS LIFT METER#67636427 OIL METER#10-76071 WATER METER #40-76071
WELL NAME: YARROW 32 STATE #704H API NUMBER: 30-025-45272	GAS METER #67636408 GAS LIFT METER#67636428 OIL METER#10-76072 WATER METER #40-76072
WELL NAME: HEMLOCK 32 STATE #703H API NUMBER: 30-025-45523	GAS METER #67636405 GAS LIFT METER#67636425 OIL METER#10-76066 WATER METER #40-76066
WELL NAME: HEMLOCK 32 STATE #704H API NUMBER: 30-025-45516	GAS METER #67636406 GAS LIFT METER#67636426 OIL METER#10-76067 WATER METER #40-76067
WELL NAME: YARROW 32 STATE #201H API NUMBER: 30-025-46272	GAS METER #67636409 GAS LIFT METER#67636429 OIL METER#10-140350 WATER METER #40-140350
WELL NAME: YARROW 32 STATE #204H API NUMBER: 30-025-46275	GAS METER #67636412 GAS LIFT METER#67636432 OIL METER#10-140353 WATER METER #40-140353
WELL NAME: YARROW 32 STATE #203H API NUMBER: 30-025-446274	GAS METER #63636411 GAS LIFT METER#63636431 OIL METER#10-140352 WATER METER #40-140352
WELL NAME: YARROW 32 STATE #202H API NUMBER: 30-025-46273	GAS METER #67636410 GAS LIFT METER#67636430 OIL METER#10-140351 WATER METER #40-140351
WELL NAME: HEMLOCK 32 STATE #201H API NUMBER: 30-025-46752	GAS METER #*11111111 GAS LIFT METER#*11111111 OIL METER#*11111111 WATER METER #*11111111
WELL NAME: HEMLOCK 32 STATE #202H API NUMBER: 30-025-46753	GAS METER #*11111111 GAS LIFT METER#*11111111 OIL METER#*11111111 WATER METER #*11111111



WELL NAME: YARROW 32 STATE #705H API NUMBER: 30-025-45273	GAS METER #*11111111 GAS LIFT METER#*11111111 OIL METER#*11111111 WATER METER #*11111111
WELL NAME: HEMLOCK 32 STATE #503H API NUMBER: 30-025-46756	GAS METER #*11111111 GAS LIFT METER#*11111111 OIL METER#*11111111 WATER METER #*11111111
WELL NAME: HEMLOCK 32 STATE #204H API NUMBER: 30-025-46755	GAS METER #*11111111 GAS LIFT METER#*11111111 OIL METER#*11111111 WATER METER #*11111111
WELL NAME: HEMLOCK 32 STATE #203H API NUMBER: 30-025-46754	GAS METER #*11111111 GAS LIFT METER#*11111111 OIL METER#*11111111 WATER METER #*11111111

Gas Orifice Meter  
Liquid Meter

\*Test meter numbers will be provided upon installation of meters and completion of the facility.

HEMLOCK YARROW 32 STATE CTB		
EOG RESOURCES MIDLAND DIVISION	BY: ARC	2/26/2020

### Process and Flow Descriptions:

The production from each well will flow into a dedicated 3-phase separator. The production stream will be separated into 3 independent streams (gas, oil, and water) by the separator and each stream will be measured individually after it exits the separator. The gas will be measured using a senior orifice meter and used to allocate total volume measured at the facility check meter, high pressure flare meter, and low pressure flare meter.

Hemlock 32 State #701H gas allocation meter is (S/N 67636401)  
Hemlock 32 State #702H gas allocation meter is (S/N 67636402)  
Hemlock 32 State #703H gas allocation meter is (S/N 67636405)  
Hemlock 32 State #704H gas allocation meter is (S/N 67636406)  
Yarrow 32 State #701H gas allocation meter is (S/N 67636403)  
Yarrow 32 State #702H gas allocation meter is (S/N 67636404)  
Yarrow 32 State #703H gas allocation meter is (S/N 67636407)  
Yarrow 32 State #704H gas allocation meter is (S/N 67636408)  
Yarrow 32 State #201H gas allocation meter is (S/N 67636409)  
Yarrow 32 State #202H gas allocation meter is (S/N 67636410)  
Yarrow 32 State #203H gas allocation meter is (S/N 67636411)  
Yarrow 32 State #204H gas allocation meter is (S/N 67636412)  
Hemlock 32 State 201H gas allocation meter is (S/N \*11111111)  
Hemlock 32 State 202H gas allocation meter is (S/N \*11111111)  
Hemlock 32 State 203H gas allocation meter is (S/N \*11111111)  
Hemlock 32 State 204H gas allocation meter is (S/N \*11111111)  
Hemlock 32 State 503H gas allocation meter is (S/N \*11111111)  
Yarrow 32 State 705H gas allocation meter is (S/N \*11111111)

The oil from the separators will be measured using a Coriolis meter.

Hemlock 32 State #701H oil allocation meter is (S/N 10-74567)  
Hemlock 32 State #702H oil allocation meter is (S/N 10-74568)  
Hemlock 32 State #703H oil allocation meter is (S/N 10-76066)  
Hemlock 32 State #704H oil allocation meter is (S/N 10-76067)  
Yarrow 32 State #701H oil allocation meter is (S/N 10-76069)  
Yarrow 32 State #702H oil allocation meter is (S/N 10-76070)  
Yarrow 32 State #703H oil allocation meter is (S/N 10-76071)  
Yarrow 32 State #704H oil allocation meter is (S/N 10-76072)  
Yarrow 32 State #201H oil allocation meter is (S/N 10-140350)  
Yarrow 32 State #202H oil allocation meter is (S/N 10-140351)  
Yarrow 32 State #203H oil allocation meter is (S/N 10-140352)  
Yarrow 32 State #204H oil allocation meter is (S/N 10-140353)  
Hemlock 32 State 201H oil allocation meter is (S/N \*11111111)  
Hemlock 32 State 202H oil allocation meter is (S/N \*11111111)  
Hemlock 32 State 203H oil allocation meter is (S/N \*11111111)  
Hemlock 32 State 204H oil allocation meter is (S/N \*11111111)  
Hemlock 32 State 503H oil allocation meter is (S/N \*11111111)  
Yarrow 32 State 705H oil allocation meter is (S/N \*11111111)

The flash gas to sales that separates from the oil in the low pressure separators after it has passed the individual well oil allocation meters will be metered using a senior orifice meter and allocated back to the wells based on the individual well oil allocation meters.

HEMLOCK 32 STATE CTB FG #1 gas allocation meter is (S/N 67636441)

HEMLOCK 32 STATE CTB FG #2 gas allocation meter is (S/N 67636442)

The water will be measured using a vortex meter. The water from each separator is combined in a common header and flows into (4) 400 barrel coated steel tanks. Guided wave radar is used to measure water volumes in these tanks. The oil from each separator will be combined into a common header and flow into a heated horizontal separator (HHS) to aid separation of water entrained in the oil. Water from the heated separator flows into the common water header connected to the (4) 400 barrel water tanks. The water is then pumped and/or trucked to a salt water disposal well. The oil from the heated separator flows through a vapor recovery tower (VRT) where gas is allowed to breakout at a lower pressure, and then the oil flows into (8) 400 barrel coated steel tanks. Guided wave radar is used to measure water and oil volumes in these tanks. Oil is pumped out of the tanks through a Coriolis meter into a truck or a pipeline. Every tank utilizes a guided wave radar to determine the volume of product in each. After the gas from each separator is measured it is combined into a common header. The gas from the heated separator also flows into this header. The gas flows through the header to a custody transfer orifice meter (#67636451) that serves as our lease production meter. If the pipeline is experiencing problems and cannot take any gas, the gas will flow through the high pressure flare meter (#67636456) to the flare. If an individual well needed to be flared for any operation reason it will be manually routed through the individual well flare meter (#67636457) to the flare. The overhead gas from the vapor recovery tower is compressed by a vapor recovery compressor and then measured by a custody transfer Emerson orifice meter (#67636486). The gas from the vapor recovery system combines with the gas from the lease production meter and flows into our gas gathering pipeline system.

\*Meter numbers will be provided upon installation of meters and completion of the facility.

District I  
1625 N. French Dr., Hobbs, NM 88240  
Phone: (575) 393-6161 Fax: (575) 393-0720  
District II  
811 S. First St., Artesia, NM 88210  
Phone: (575) 748-1283 Fax: (575) 748-9720  
District III  
1000 Rio Brazos Road, Aztec, NM 87410  
Phone: (505) 334-6178 Fax: (505) 334-6170  
District IV  
1220 S. St. Francis Dr., Santa Fe, NM 87505  
Phone: (505) 476-3460 Fax: (505) 476-3462

State of New Mexico  
Energy, Minerals & Natural Resources  
Department  
OIL CONSERVATION DIVISION  
1220 South St. Francis Dr.  
Santa Fe, NM 87505

FORM C-102

Revised August 1, 2011

Submit one copy to appropriate

District Office

☐ AMENDED REPORT

## WELL LOCATION AND ACREAGE DEDICATION PLAT

<sup>1</sup> API Number 30-025-46752	<sup>2</sup> Pool Code 59900	<sup>3</sup> Pool Name TRIPLE X; BONE SPRING
<sup>4</sup> Property Code	<sup>5</sup> Property Name HEMLOCK 32 STATE	<sup>6</sup> Well Number 201H
<sup>7</sup> OGRID No. 7377	<sup>8</sup> Operator Name EOG RESOURCES, INC.	<sup>9</sup> Elevation 3661'

<sup>10</sup>Surface Location

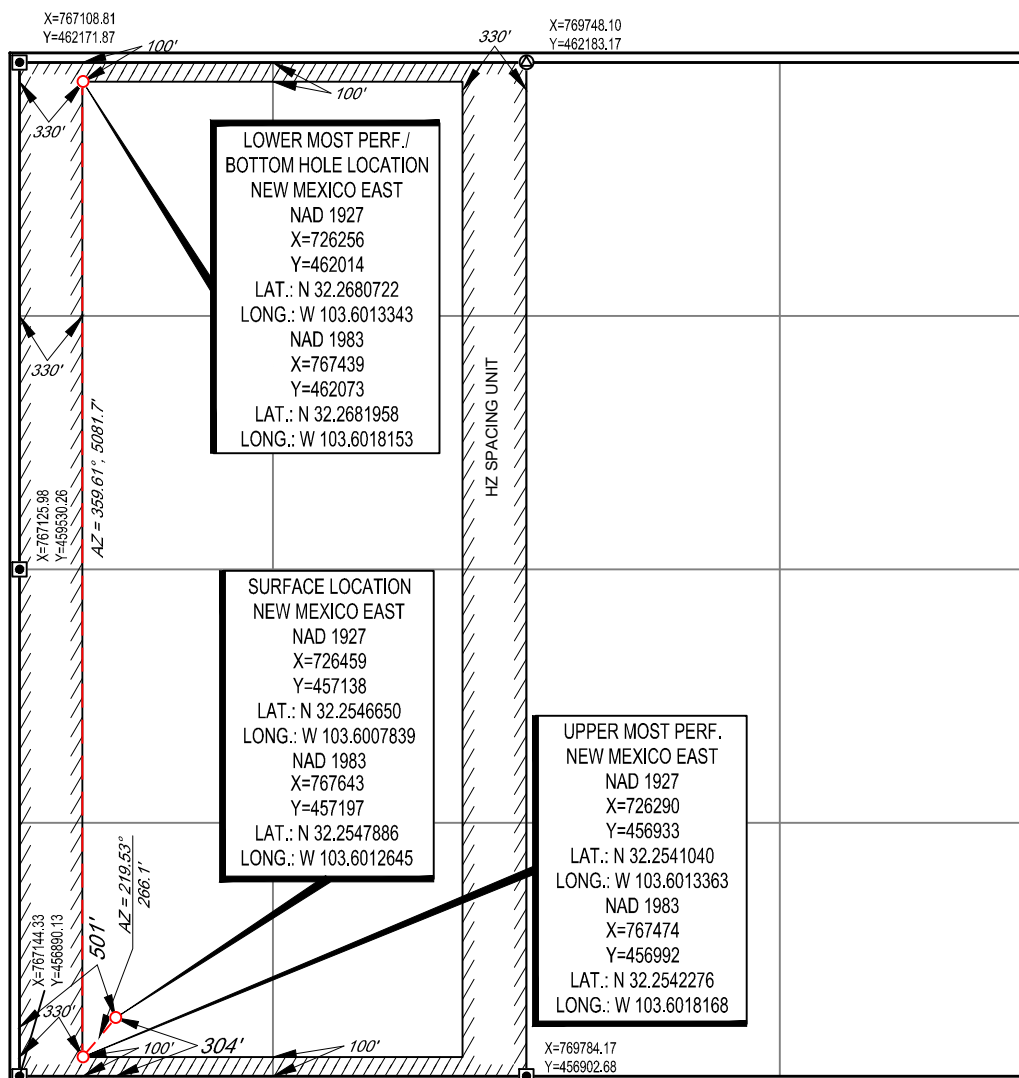
UL or lot no.	Section	Township	Range	Lot Idn	Feet from the	North/South line	Feet from the	East/West line	County
M	32	23-S	33-E	-	304'	SOUTH	501'	WEST	LEA

<sup>11</sup>Bottom Hole Location If Different From Surface

UL or lot no.	Section	Township	Range	Lot Idn	Feet from the	North/South line	Feet from the	East/West line	County
D	32	23-S	33-E	-	100'	NORTH	330'	WEST	LEA

<sup>12</sup> Dedicated Acres 320	<sup>13</sup> Joint or Infill	<sup>14</sup> Consolidation Code	<sup>15</sup> Order No.
--------------------------------------	-------------------------------	----------------------------------	-------------------------

No allowable will be assigned to this completion until all interests have been consolidated or a non-standard unit has been approved by the division.

<sup>17</sup>OPERATOR CERTIFICATION

I hereby certify that the information contained herein is true and complete to the best of my knowledge and belief, and that this organization either owns a working interest or unleased mineral interest in the land including the proposed bottom hole location or has a right to drill this well at this location pursuant to a contract with an owner of such a mineral or working interest, or to a voluntary pooling agreement or a compulsory pooling order heretofore entered by the division.

*Lisa Trascher* 1/14/2020

Signature Date

Lisa Trascher

Printed Name

*lisa\_trascher@eogresources.com*

E-mail Address

<sup>18</sup>SURVEYOR CERTIFICATION

I hereby certify that the well location shown on this plat was plotted from field notes of actual surveys made by me or under my supervision, and that the same is true to the best of my belief.

07/01/2019

Date of Survey  
Signature and Seal of Professional Surveyor

*RAMON A. DOMINGUEZ*  
NEW MEXICO  
24508  
PROFESSIONAL SURVEYOR

Certificate Number

District I  
1625 N. French Dr., Hobbs, NM 88240  
Phone: (575) 393-6161 Fax: (575) 393-0720  
District II  
811 S. First St., Artesia, NM 88210  
Phone: (575) 748-1283 Fax: (575) 748-9720  
District III  
1000 Rio Brazos Road, Aztec, NM 87410  
Phone: (505) 334-6178 Fax: (505) 334-6170  
District IV  
1220 S. St. Francis Dr., Santa Fe, NM 87505  
Phone: (505) 476-3460 Fax: (505) 476-3462

State of New Mexico  
Energy, Minerals & Natural Resources  
Department  
OIL CONSERVATION DIVISION  
1220 South St. Francis Dr.  
Santa Fe, NM 87505

FORM C-102

Revised August 1, 2011

Submit one copy to appropriate

District Office

☐ AMENDED REPORT

## WELL LOCATION AND ACREAGE DEDICATION PLAT

<sup>1</sup> API Number <b>30-025-46753</b>	<sup>2</sup> Pool Code <b>59900</b>	<sup>3</sup> Pool Name <b>TRIPLE X; BONE SPRING</b>
<sup>4</sup> Property Code	<sup>5</sup> Property Name <b>HEMLOCK 32 STATE</b>	<sup>6</sup> Well Number <b>202H</b>
<sup>7</sup> OGRID No. <b>7377</b>	<sup>8</sup> Operator Name <b>EOG RESOURCES, INC.</b>	<sup>9</sup> Elevation <b>3661'</b>

<sup>10</sup>Surface Location

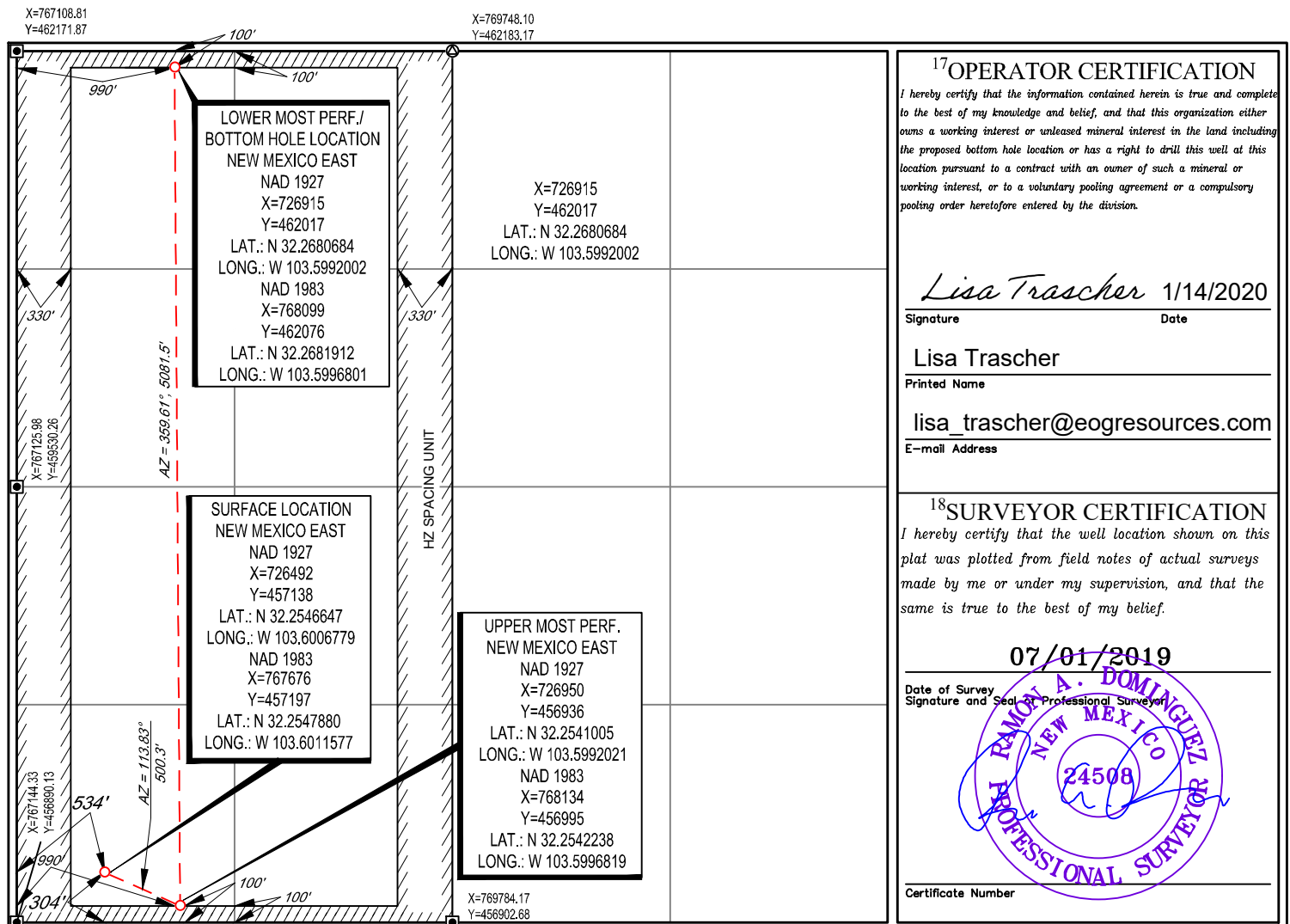
UL or lot no.	Section	Township	Range	Lot Idn	Feet from the	North/South line	Feet from the	East/West line	County
<b>M</b>	<b>32</b>	<b>23-S</b>	<b>33-E</b>	<b>-</b>	<b>304'</b>	<b>SOUTH</b>	<b>534'</b>	<b>WEST</b>	<b>LEA</b>

<sup>11</sup>Bottom Hole Location If Different From Surface

UL or lot no.	Section	Township	Range	Lot Idn	Feet from the	North/South line	Feet from the	East/West line	County
<b>D</b>	<b>32</b>	<b>23-S</b>	<b>33-E</b>	<b>-</b>	<b>100'</b>	<b>NORTH</b>	<b>990'</b>	<b>WEST</b>	<b>LEA</b>

<sup>12</sup> Dedicated Acres <b>320</b>	<sup>13</sup> Joint or Infill	<sup>14</sup> Consolidation Code	<sup>15</sup> Order No.
---	-------------------------------	----------------------------------	-------------------------

No allowable will be assigned to this completion until all interests have been consolidated or a non-standard unit has been approved by the division.

<sup>17</sup>OPERATOR CERTIFICATION

I hereby certify that the information contained herein is true and complete to the best of my knowledge and belief, and that this organization either owns a working interest or unleased mineral interest in the land including the proposed bottom hole location or has a right to drill this well at this location pursuant to a contract with an owner of such a mineral or working interest, or to a voluntary pooling agreement or a compulsory pooling order heretofore entered by the division.

*Lisa Trascher* 1/14/2020

Signature

Date

Lisa Trascher

Printed Name

[lisa\\_trascher@eogresources.com](mailto:lisa_trascher@eogresources.com)

E-mail Address

<sup>18</sup>SURVEYOR CERTIFICATION

I hereby certify that the well location shown on this plat was plotted from field notes of actual surveys made by me or under my supervision, and that the same is true to the best of my belief.

07/01/2019

Date of Survey

Signature and Seal of Professional Surveyor

RAMON A. DOMINGUEZ  
NEW MEXICO  
24508  
PROFESSIONAL SURVEYOR

Certificate Number

District I  
1625 N. French Dr., Hobbs, NM 88240  
Phone: (575) 393-6161 Fax: (575) 393-0720  
District II  
811 S. First St., Artesia, NM 88210  
Phone: (575) 748-1283 Fax: (575) 748-9720  
District III  
1000 Rio Brazos Road, Aztec, NM 87410  
Phone: (505) 334-6178 Fax: (505) 334-6170  
District IV  
1220 S. St. Francis Dr., Santa Fe, NM 87505  
Phone: (505) 476-3460 Fax: (505) 476-3462

State of New Mexico  
Energy, Minerals & Natural Resources  
Department  
OIL CONSERVATION DIVISION  
1220 South St. Francis Dr.  
Santa Fe, NM 87505

FORM C-102

Revised August 1, 2011

Submit one copy to appropriate

District Office

☐ AMENDED REPORT

## WELL LOCATION AND ACREAGE DEDICATION PLAT

<sup>1</sup> API Number 30-025-46754	<sup>2</sup> Pool Code 59900	<sup>3</sup> Pool Name TRIPLE X; BONE SPRING
<sup>4</sup> Property Code 320561	<sup>5</sup> Property Name HEMLOCK 32 STATE	<sup>6</sup> Well Number 203H
<sup>7</sup> OGRID No. 7377	<sup>8</sup> Operator Name EOG RESOURCES, INC.	<sup>9</sup> Elevation 3666'

<sup>10</sup>Surface Location

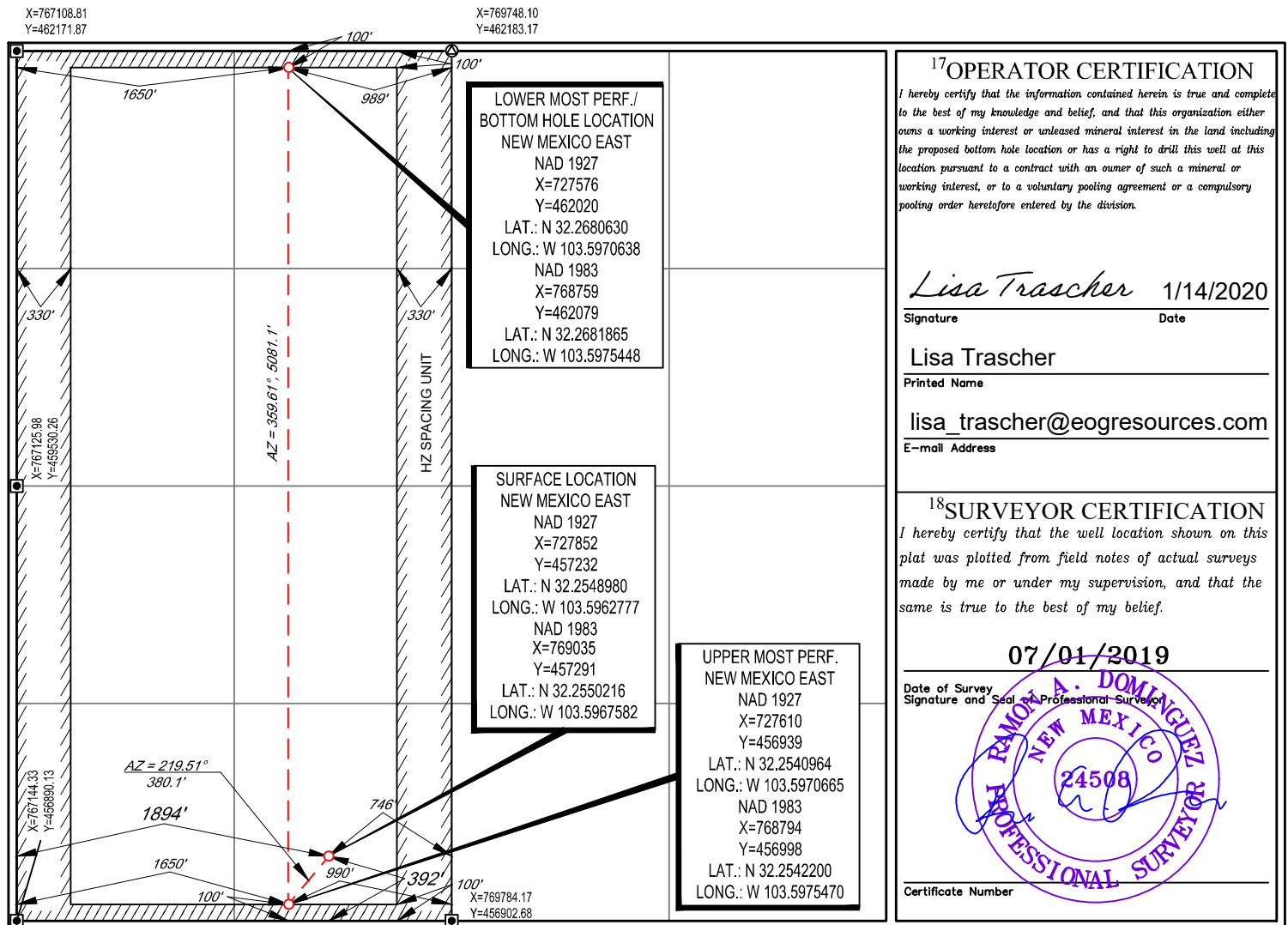
UL or lot no.	Section	Township	Range	Lot Idn	Feet from the	North/South line	Feet from the	East/West line	County
N	32	23-S	33-E	-	392'	SOUTH	1894'	WEST	LEA

<sup>11</sup>Bottom Hole Location If Different From Surface

UL or lot no.	Section	Township	Range	Lot Idn	Feet from the	North/South line	Feet from the	East/West line	County
C	32	23-S	33-E	-	100'	NORTH	1650'	WEST	LEA

<sup>12</sup> Dedicated Acres 320	<sup>13</sup> Joint or Infill	<sup>14</sup> Consolidation Code	<sup>15</sup> Order No.
--------------------------------------	-------------------------------	----------------------------------	-------------------------

No allowable will be assigned to this completion until all interests have been consolidated or a non-standard unit has been approved by the division.



**District I**  
1625 N. French Dr., Hobbs, NM 88240  
Phone: (575) 393-6161 Fax: (575) 393-0720

**District II**  
811 S. First St., Artesia, NM 88210  
Phone: (575) 748-1283 Fax: (575) 748-9720

**District III**  
1000 Rio Brazos Road, Aztec, NM 87410  
Phone: (505) 334-6178 Fax: (505) 334-6170

**District IV**  
1220 S. St. Francis Dr., Santa Fe, NM 87505  
Phone: (505) 476-3460 Fax: (505) 476-3462

State of New Mexico  
Energy, Minerals & Natural Resources  
Department  
OIL CONSERVATION DIVISION  
1220 South St. Francis Dr.  
Santa Fe, NM 87505

**FORM C-102**

Revised August 1, 2011

**Submit one copy to appropriate**

## District Office

☐ **AMENDED REPORT**

# WELL LOCATION AND ACREAGE DEDICATION PLAT

<sup>1</sup> API Number 30-025-46755	<sup>2</sup> Pool Code 59900	<sup>3</sup> Pool Name TRIPLE X; BONE SPRING
<sup>4</sup> Property Code 320561	<sup>5</sup> Property Name HEMLOCK 32 STATE	
<sup>7</sup> OGRID No. 7377	<sup>8</sup> Operator Name EOG RESOURCES, INC.	<sup>6</sup> Well Number 204H  <sup>9</sup> Elevation 3666'

<sup>10</sup>**Surface Location**

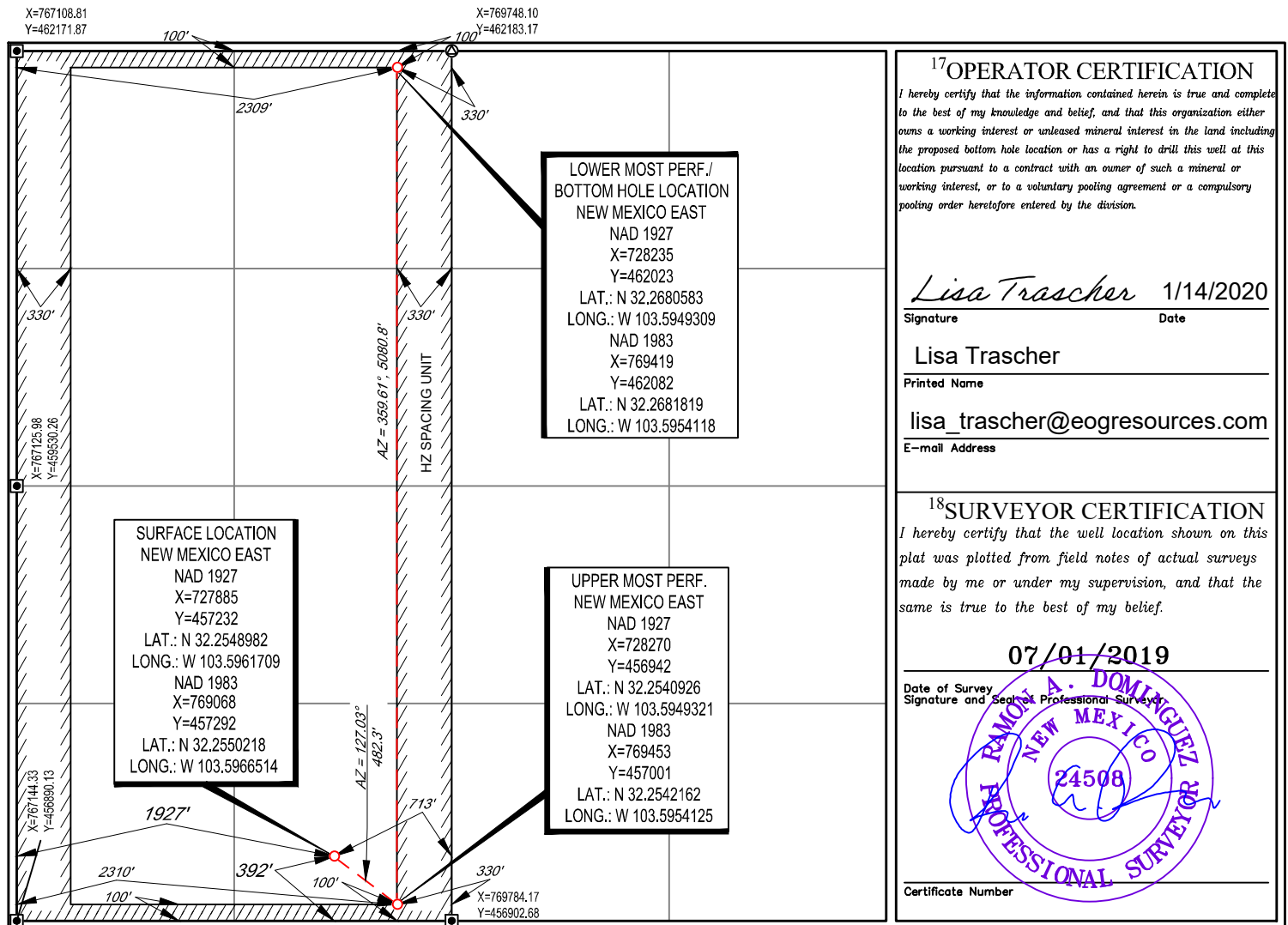
UL or lot no.	Section	Township	Range	Lot Idn	Feet from the	North/South line	Feet from the	East/West line	County
N	32	23-S	33-E	-	392'	SOUTH	1927'	WEST	LEA

<sup>11</sup>Bottom Hole Location If Different From Surface

UL or lot no.	Section	Township	Range	Lot Idn	Feet from the	North/South line	Feet from the	East/West line	County
C	32	23-S	33-E	-	100'	NORTH	2309'	WEST	LEA

<sup>12</sup> Dedicated Acres <b>320</b>	<sup>13</sup> Joint or Infill	<sup>14</sup> Consolidation Code	<sup>15</sup> Order No.
---	-------------------------------	----------------------------------	-------------------------

No allowable will be assigned to this completion until all interests have been consolidated or a non-standard unit has been approved by the division.



District I  
1625 N. French Dr., Hobbs, NM 88240  
Phone: (575) 393-6161 Fax: (575) 393-0720  
District II  
811 S. First St., Artesia, NM 88210  
Phone: (575) 748-1283 Fax: (575) 748-9720  
District III  
1000 Rio Brazos Road, Aztec, NM 87410  
Phone: (505) 334-6178 Fax: (505) 334-6170  
District IV  
1220 S. St. Francis Dr., Santa Fe, NM 87505  
Phone: (505) 476-3460 Fax: (505) 476-3462

State of New Mexico  
Energy, Minerals & Natural Resources  
Department  
OIL CONSERVATION DIVISION  
1220 South St. Francis Dr.  
Santa Fe, NM 87505

FORM C-102

Revised August 1, 2011

Submit one copy to appropriate

District Office

☐ AMENDED REPORT

## WELL LOCATION AND ACREAGE DEDICATION PLAT

<sup>1</sup> API Number 30-025-46756	<sup>2</sup> Pool Code 59900	<sup>3</sup> Pool Name TRIPLE X; BONE SPRING
<sup>4</sup> Property Code 320561	<sup>5</sup> Property Name HEMLOCK 32 STATE	<sup>6</sup> Well Number 503H
<sup>7</sup> OGRID No. 7377	<sup>8</sup> Operator Name EOG RESOURCES, INC.	<sup>9</sup> Elevation 3661'

<sup>10</sup>Surface Location

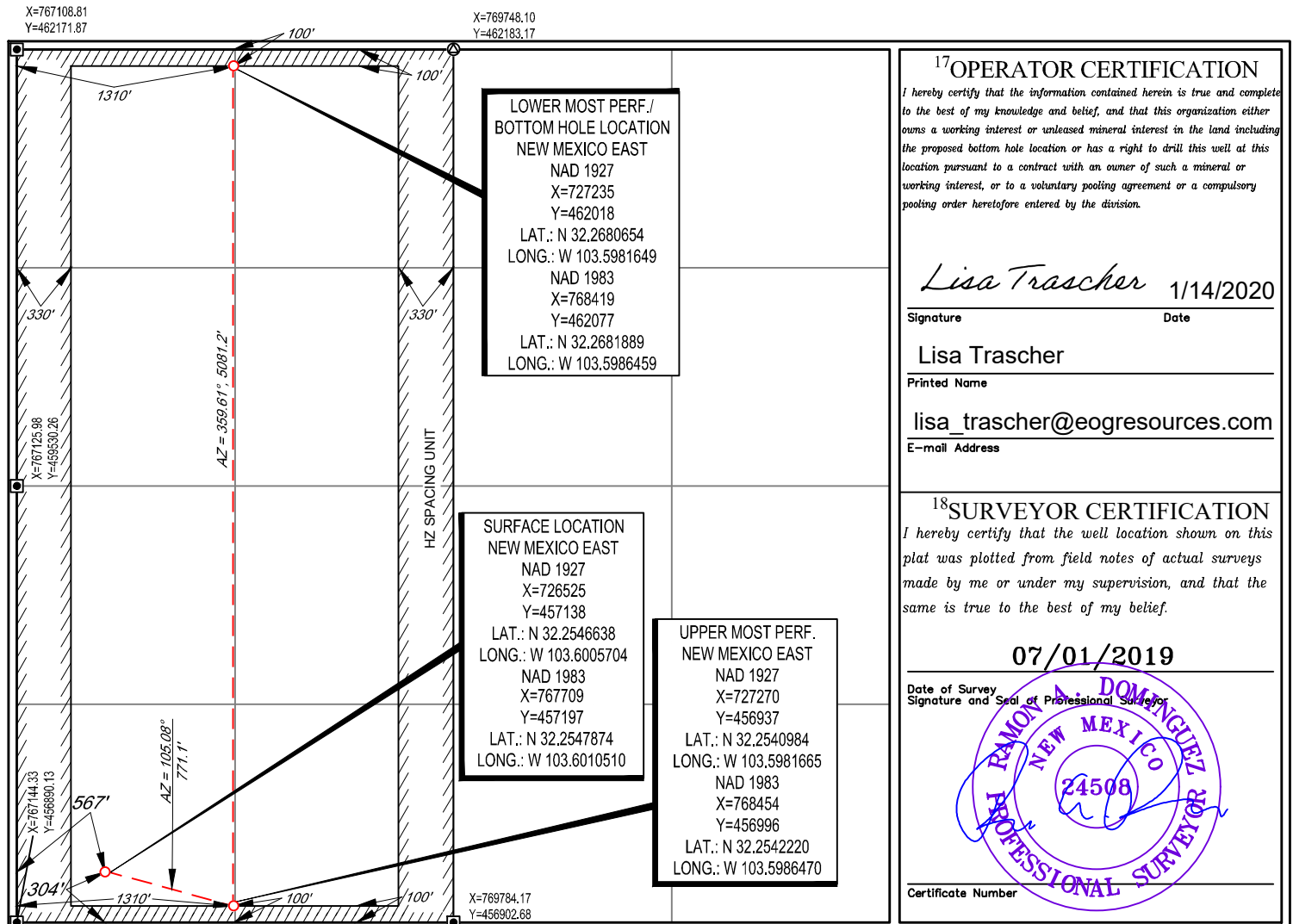
UL or lot no.	Section	Township	Range	Lot Idn	Feet from the	North/South line	Feet from the	East/West line	County
M	32	23-S	33-E	-	304'	SOUTH	567'	WEST	LEA

<sup>11</sup>Bottom Hole Location If Different From Surface

UL or lot no.	Section	Township	Range	Lot Idn	Feet from the	North/South line	Feet from the	East/West line	County
D	32	23-S	33-E	-	100'	NORTH	1310'	WEST	LEA

<sup>12</sup> Dedicated Acres 320	<sup>13</sup> Joint or Infill	<sup>14</sup> Consolidation Code	<sup>15</sup> Order No.
--------------------------------------	-------------------------------	----------------------------------	-------------------------

No allowable will be assigned to this completion until all interests have been consolidated or a non-standard unit has been approved by the division.



**District I**  
1625 N. French Dr., Hobbs, NM 88240  
Phone: (575) 393-6161 Fax: (575) 393-0720

**District II**  
811 S. First St., Artesia, NM 88210  
Phone: (575) 748-1283 Fax: (575) 748-9720

**District III**  
1000 Rio Brazos Road, Aztec, NM 87410  
Phone: (505) 334-6178 Fax: (505) 334-6170

**District IV**  
1220 S. St. Francis Dr., Santa Fe, NM 87505  
Phone: (505) 476-3460 Fax: (505) 476-3462

State of New Mexico  
Energy, Minerals & Natural Resources  
Department  
OIL CONSERVATION DIVISION  
1220 South St. Francis Dr.  
Santa Fe, NM 87505

**FORM C-102**

Revised August 1, 2011

**Submit one copy to appropriate**

**District Office**☐ **AMENDED REPORT**

# WELL LOCATION AND ACREAGE DEDICATION PLAT

<sup>1</sup> API Number 30-025-45273	<sup>2</sup> Pool Code 98135	<sup>3</sup> Pool Name WC-025 G-09 S243310P; Upper Wolfcamp
<sup>4</sup> Property Code 322743	<sup>5</sup> Property Name YARROW 32 STATE	<sup>6</sup> Well Number #705H
<sup>7</sup> OGRID No. 7377	<sup>8</sup> Operator Name EOG RESOURCES, INC.	<sup>9</sup> Elevation 3672'

### <sup>10</sup>Surface Location

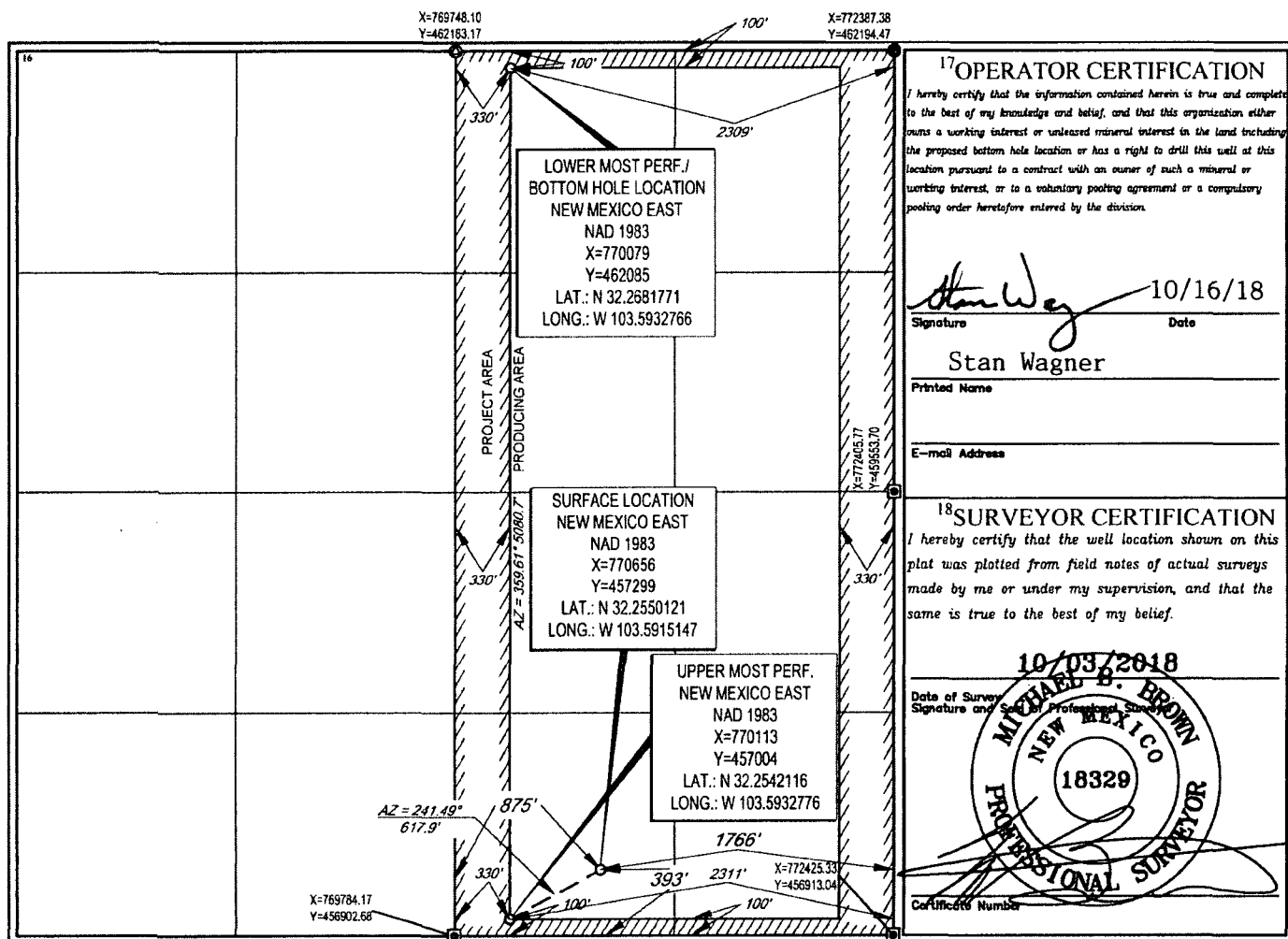
UL or lot no.	Section	Township	Range	Lot Idn	Feet from the	North/South line	Feet from the	East/West line	County
0	32	23-S	33-E	-	393'	SOUTH	1766'	EAST	LEA

<sup>11</sup>Bottom Hole Location If Different From Surface

UL or lot no.	Section	Township	Range	Lot Idn	Feet from the	North/South line	Feet from the	East/West line	County
<b>B</b>	<b>32</b>	<b>23-S</b>	<b>33-E</b>	<b>-</b>	<b>100'</b>	<b>NORTH</b>	<b>2309'</b>	<b>EAST</b>	<b>LEA</b>

<sup>12</sup> Dedicated Acres <b>320</b>	<sup>13</sup> Joint or Infill	<sup>14</sup> Consolidation Code	<sup>15</sup> Order No.
---	-------------------------------	----------------------------------	-------------------------

No allowable will be assigned to this completion until all interests have been consolidated or a non-standard unit has been approved by the division.



S:\SURVEY\EOG MIDLAND\YARROW 32 STATE\FINAL PRODUCTS\ILO YARROW 32 STATE 705H.DWG 10/15/2018 11:58:04 AM csm:th5