

Revised March 23, 2017

SON85-200429-C-107A 5084

RECEIVED: 4/29/20	REVIEWER:	TYPE: DHC	APP NO: pDM2012036725
----------------------	-----------	--------------	--------------------------

ABOVE THIS TABLE FOR OCD DIVISION USE ONLY

NEW MEXICO OIL CONSERVATION DIVISION
 - Geological & Engineering Bureau -
 1220 South St. Francis Drive, Santa Fe, NM 87505

**ADMINISTRATIVE APPLICATION CHECKLIST**

THIS CHECKLIST IS MANDATORY FOR ALL ADMINISTRATIVE APPLICATIONS FOR EXCEPTIONS TO DIVISION RULES AND
 REGULATIONS WHICH REQUIRE PROCESSING AT THE DIVISION LEVEL IN SANTA FE

Applicant: Marathon Oil Permian LLC **OGRID Number:** 372098
Well Name: Charlie Murphy 6 TB Federal Com 14H **API:** 30-025-46484 **+**
Pool: WC-025 G-08 S253534O; Bone Spring & WC-025 G-09 S263504N; Wolfcamp **Pool Code:** 97088 & 98117

**SUBMIT ACCURATE AND COMPLETE INFORMATION REQUIRED TO PROCESS THE TYPE OF APPLICATION
 INDICATED BELOW**

1) TYPE OF APPLICATION: Check those which apply for [A]

A. Location – Spacing Unit – Simultaneous Dedication

☐ NSL ☐ NSP (PROJECT AREA) ☐ NSP (PRORATION UNIT) ☐ SD

B. Check one only for [I] or [II]

[I] Commingling – Storage – Measurement

☒ DHC ☐ CTB ☐ PLC ☐ PC ☐ OLS ☐ OLM

[II] Injection – Disposal – Pressure Increase – Enhanced Oil Recovery

☐ WFX ☐ PMX ☐ SWD ☐ IPI ☐ EOR ☐ PPR
2) NOTIFICATION REQUIRED TO: Check those which apply.

- A. ☐ Offset operators or lease holders
 B. ☐ Royalty, overriding royalty owners, revenue owners
 C. ☐ Application requires published notice
 D. ☐ Notification and/or concurrent approval by SLO
 E. ☒ Notification and/or concurrent approval by BLM
 F. ☐ Surface owner
 G. ☒ For all of the above, proof of notification or publication is attached, and/or,
 H. ☐ No notice required

FOR OCD ONLY

- ☐ Notice Complete
☐ Application
 Content
 Complete

- 3) CERTIFICATION:** I hereby certify that the information submitted with this application for administrative approval is **accurate** and **complete** to the best of my knowledge. I also understand that **no action** will be taken on this application until the required information and notifications are submitted to the Division.

Note: Statement must be completed by an individual with managerial and/or supervisory capacity.

Adrian Covarrubias

Print or Type Name

Signature

4/28/2020

Date

713-296-3368

Phone Number

acovarrubias@marathonoil.com

e-mail Address

District I
1625 N. French Drive, Hobbs, NM 88240

State of New Mexico
Energy, Minerals and Natural Resources Department

Form C-107A
Revised August 1, 2011

District II
811 S. First St., Artesia, NM 88210

District III
1000 Rio Brazos Road, Aztec, NM 87410

District IV
1220 S. St. Francis Dr., Santa Fe, NM 87505

Oil Conservation Division
1220 South St. Francis Dr.
Santa Fe, New Mexico 87505

APPLICATION TYPE
☒ Single Well
☐ Establish Pre-Approved Pools
EXISTING WELLBORE
☒ Yes ☐ No

APPLICATION FOR DOWNHOLE COMMINGLING

Marathon Oil Permian LLC 5555 San Felipe St, Houston, TX 77056
Operator Address
Charlie Murphy 6 TB Federal Com 14H A-06-26S-35E Lea
Lease Well No. Unit Letter-Section-Township-Range County
OGRID No. 372098 Property Code 326318 API No. 30-025-46484 Lease Type: ☒ Federal ☐ State ☐ Fee

DATA ELEMENT	UPPER ZONE	INTERMEDIATE ZONE	LOWER ZONE
Pool Name	WC-025 G-08 S253534O, Bone Spring		WC-025 G-09 S263504N; Wolfcamp
Pool Code	97088		98117
Top and Bottom of Pay Section (Perforated or Open-Hole Interval)	12480' - 22647' MD		17852' - 18674' MD
Method of Production (Flowing or Artificial Lift)	Flowing		Flowing
Bottomhole Pressure (Note: Pressure data will not be required if the bottom perforation in the lower zone is within 150% of the depth of the top perforation in the upper zone)	~9600 psi		~10100 psi
Oil Gravity or Gas BTU (Degree API or Gas BTU)	42 API Gravity		42 API Gravity
Producing, Shut-In or New Zone	New Zone		New Zone
Date and Oil/Gas/Water Rates of Last Production. (Note: For new zones with no production history, applicant shall be required to attach production estimates and supporting data.)	Date: Rates: Oil: 2106 bbl/d Water: 3510 bbl/d Gas: 3861 mscf/d	Date: Rates:	Date: Rates: Oil: 1989 bbl/d Water: 3919 bbl/d Gas: 2691 mscf/d
Fixed Allocation Percentage (Note: If allocation is based upon something other than current or past production, supporting data or explanation will be required.)	Oil 51 % Gas 59 %	Oil % Gas %	Oil 49 % Gas 41 %

ADDITIONAL DATA

Are all working, royalty and overriding royalty interests identical in all commingled zones? Yes ☒ No ☐
If not, have all working, royalty and overriding royalty interest owners been notified by certified mail? Yes ☐ No ☐
Are all produced fluids from all commingled zones compatible with each other? Yes ☒ No ☐
Will commingling decrease the value of production? Yes ☐ No ☒
If this well is on, or communitized with, state or federal lands, has either the Commissioner of Public Lands or the United States Bureau of Land Management been notified in writing of this application? Yes ☒ No ☐
NMOCD Reference Case No. applicable to this well: _____

Attachments:

C-102 for each zone to be commingled showing its spacing unit and acreage dedication.
Production curve for each zone for at least one year. (If not available, attach explanation.)
For zones with no production history, estimated production rates and supporting data.
Data to support allocation method or formula.
Notification list of working, royalty and overriding royalty interests for uncommon interest cases.
Any additional statements, data or documents required to support commingling.

PRE-APPROVED POOLS

If application is to establish Pre-Approved Pools, the following additional information will be required:

List of other orders approving downhole commingling within the proposed Pre-Approved Pools
List of all operators within the proposed Pre-Approved Pools
Proof that all operators within the proposed Pre-Approved Pools were provided notice of this application.
Bottomhole pressure data.

I hereby certify that the information above is true and complete to the best of my knowledge and belief.

SIGNATURE Adrian Covarrubias TITLE Regulatory Professional DATE 4/28/2020
TYPE OR PRINT NAME Adrian Covarrubias TELEPHONE NO. (713) 296-3368
E-MAIL ADDRESS acovarrubias@marathonoil.com

Charlie Murphy 6 TB Fed Com 14H | API 30-025-46484
A-6-26S-35E, 272 FNL & 1171 FEL

Application for Downhole Commingling

Marathon Oil Permian is submitting this application to downhole commingle the Charlie Murphy 6 TB Fed Com 14H. The pools to be commingled are WC-025 G-08 S253534O; Bone Spring (Pool Code 97088), and WC-025 G-09 S263504N; Wolfcamp (Pool Code 98117).

Attached are the following items:

C-102 Plats for each Zone

Upper Zone: WC-025 G-08 S253534O; Bone Spring

Lower Zone: WC-025 G-09 S263504N; Wolfcamp

Production curves, estimated production rates, and allocation methods

The Charlie Murphy 6 TB Fed Com 14H is a new well and does not have any production history.

The Cave Lion wells are located <0.5 mile to the east of the Charlie Murphy TB 14H, and the Square Bill wells are located heel to heel with the Charlie Murphy TB 14H. Reservoir properties are interpreted to be similar between all 3 pads as they are in close proximity to each other, and target similar prospective zones.

Attached are the production curves for both Cave Lion and Square Bill and estimated production averages. These averages were used to calculate the allocation percentages for the zones.

Working Interest Owners

Letter from Land Supervisor certifies that all working interest are identical and notification is not required.

If you have any questions or comments please feel free to contact me at 713-296-3368 or by email at acovarrubias@marathonoil.com.



Adrian Covarrubias
Regulatory Professional

1625 N. French Dr., Hobbs, NM 88240
 Phone: (575) 393-6161 Fax: (575) 393-0720
District II
 811 S. First St., Artesia, NM 88210
 Phone: (575) 748-1283 Fax: (575) 748-9720
District III
 1000 Rio Brazos Road, Aztec, NM 87410
 Phone: (505) 334-6178 Fax: (505) 334-6170
District IV
 1220 S. St. Francis Dr., Santa Fe, NM 87505
 Phone: (505) 476-3460 Fax: (505) 476-3462

State of New Mexico
 Energy, Minerals & Natural Resources Department
OIL CONSERVATION DIVISION
 1220 South St. Francis Dr.
 Santa Fe, NM 87505

Revised August 1, 2011
 Submit one copy to appropriate
 District Office

☐ AMENDED REPORT

WELL LOCATION AND ACREAGE DEDICATION AS-DRILLED PLAT

¹ API Number 30-025-46484	² Pool Code 97088	³ Pool Name WC-025 G-08 S2535340; BONE SPRING
⁴ Property Code 326318	Property Name CHARLIE MURPHY 6 TB FED COM	
⁷ OGRID No. 372098	⁸ Operator Name MARATHON OIL PERMIAN LLC	⁶ Well Number 14H
		⁹ Elevation 3270'

¹⁰ Surface Location

UL or lot no.	Section	Township	Range	Lot Idn	Feet from the	North/South line	Feet from the	East/West line	County
A	6	26S	35E		272	NORTH	1171	EAST	LEA
¹¹ Bottom Hole Location If Different From Surface									
UL or lot no.	Section	Township	Range	Lot Idn	Feet from the	North/South line	Feet from the	East/West line	County
P	7	26S	35E		101	SOUTH	1313	EAST	LEA
¹² Dedicated Acres 640.0	¹³ Joint or Infill	¹⁴ Consolidation Code	¹⁵ Order No.						

No allowable will be assigned to this completion until all interests have been consolidated or a non-standard unit has been approved by the division.

<p>Defining Well</p> <p>CORNER COORDINATES NAD 83, SPCS NM EAST A - X: 831074.50' / Y: 388675.34' B - X: 831129.70' / Y: 383390.47' C - X: 828491.21' / Y: 383378.93' D - X: 828434.68' / Y: 388658.54' E - X: 828377.14' / Y: 393941.11' F - X: 831020.60' / Y: 393959.45'</p> <p>CORNER COORDINATES NAD 27, SPCS NM EAST A - X: 789886.87' / Y: 388617.77' B - X: 789941.84' / Y: 383333.04' C - X: 787303.38' / Y: 383321.52' D - X: 787247.09' / Y: 388600.99' E - X: 787189.78' / Y: 393883.42' F - X: 789833.21' / Y: 393901.73'</p> <p>SURFACE HOLE LOCATION 272' FNL 1171' FEL, SECTION 6 0' MEASURED DEPTH IN FEET NAD 83, SPCS NM EAST X: 829852.77' / Y: 393679.57' LAT: 32.0788054N / LON: 103.40182274W NAD 27, SPCS NM EAST X: 788665.38' / Y: 393621.88' LAT: 32.07875444N / LON: 103.40135930W</p> <p>KICK OFF POINT/FIRST TAKE POINT 100' FNL 1327' FEL, SECTION 6 7221' MEASURED DEPTH IN FEET NAD 83, SPCS NM EAST X: 829694.95' / Y: 393850.25' LAT: 32.07935342N / LON: 103.4023745W NAD 27, SPCS NM EAST X: 788507.58' / Y: 393792.55' LAT: 32.07922732N / LON: 103.40186396W</p> <p>LAST TAKE POINT/BOTTOM HOLE LOCATION 101' FSL 1313' FEL, SECTION 7 22647' MEASURED DEPTH IN FEET NAD 83, SPCS NM EAST X: 829815.56' / Y: 383485.60' LAT: 32.05086216N / LON: 103.40222680W NAD 27, SPCS NM EAST X: 788627.71' / Y: 383428.18' LAT: 32.05073592N / LON: 103.40176496W</p> <p>SHEET 1 OF 1 JOB No. R3954_003 REV 0 JCS 4/22/2020</p>	<p>¹⁷ OPERATOR CERTIFICATION</p> <p>I hereby certify that the information contained herein is true and complete to the best of my knowledge and belief, and that this organization either owns a working interest or unleased mineral interest in the land including the proposed bottom hole location or has a right to drill this well at this location pursuant to a contract with an owner of such a mineral or working interest, or to a voluntary pooling agreement or a compulsory pooling order heretofore entered by the division.</p> <p><i>[Signature]</i> 4/28/2020 Signature Date</p> <p>Adrian Covarrubias Printed Name</p> <p>E-mail Address</p> <p>¹⁸ SURVEYOR CERTIFICATION</p> <p>I hereby certify that the well surface location shown on this plat was plotted from field notes of the as-staked surveys made by me or under my supervision, and that the same is true and correct to the best of my belief. Data used for underground measurements were provided by others for reference only and does not constitute field measurements performed by R-Squared Global.</p> <p>Date of Survey</p> <p>Signature and Seal of Professional Surveyor:</p> <p>PRELIMINARY</p> <p>Certificate Number</p>
-------------------------------------------------------------------------------------------------------------------------------------------------------------------------------------------------------------------------------------------------------------------------------------------------------------------------------------------------------------------------------------------------------------------------------------------------------------------------------------------------------------------------------------------------------------------------------------------------------------------------------------------------------------------------------------------------------------------------------------------------------------------------------------------------------------------------------------------------------------------------------------------------------------------------------------------------------------------------------------------------------------------------------------------------------------------------------------------------------------------------------------------------------------------------------------------------------------------------------------------------------------------------------------------------------------------------------------------------------------------------------------------------------------------------------------------------------------------------------------------------------------------------------------------------------------------------------------------------------------------------------------------------------------------------------------------------------------------------------------------------------------------------------------------------------------------------------------------------------------------------------------------------------------------------------------------------	--------------------------------------------------------------------------------------------------------------------------------------------------------------------------------------------------------------------------------------------------------------------------------------------------------------------------------------------------------------------------------------------------------------------------------------------------------------------------------------------------------------------------------------------------------------------------------------------------------------------------------------------------------------------------------------------------------------------------------------------------------------------------------------------------------------------------------------------------------------------------------------------------------------------------------------------------------------------------------------------------------------------------------------------------------------------------------------------------------------------------------------------------------------------------------------------------------------------------------------------------------------------------------------------------------

Distances/areas relative to NAD 83 Combined Scale Factor: 0.99985058 Convergence Angle: 00°29'34.8000"

1625 N. French Dr., Hobbs, NM 88240
 Phone: (575) 393-6161 Fax: (575) 393-0720
District II
 811 S. First St., Artesia, NM 88210
 Phone: (575) 748-1283 Fax: (575) 748-9720
District III
 1000 Rio Brazos Road, Aztec, NM 87410
 Phone: (505) 334-6178 Fax: (505) 334-6170
District IV
 1220 S. St. Francis Dr., Santa Fe, NM 87505
 Phone: (505) 476-3460 Fax: (505) 476-3462

State of New Mexico
 Energy, Minerals & Natural Resources Department
OIL CONSERVATION DIVISION
 1220 South St. Francis Dr.
 Santa Fe, NM 87505

Revised August 1, 2011
 Submit one copy to appropriate
 District Office

☐ AMENDED REPORT

WELL LOCATION AND ACREAGE DEDICATION AS-DRILLED PLAT

¹ API Number 30-025-46484	² Pool Code 98117	³ Pool Name WC-025 G-09 S263504N; WOLFCAMP
⁴ Property Code 326318	Property Name CHARLIE MURPHY 6 TB FED COM	⁶ Well Number 14H
⁷ OGRID No. 372098	⁸ Operator Name MARATHON OIL PERMIAN LLC	⁹ Elevation 3270'

¹⁰ Surface Location

UL or lot no.	Section	Township	Range	Lot Idn	Feet from the	North/South line	Feet from the	East/West line	County
A	6	26S	35E		272	NORTH	1171	EAST	LEA
¹¹ Bottom Hole Location If Different From Surface									
UL or lot no.	Section	Township	Range	Lot Idn	Feet from the	North/South line	Feet from the	East/West line	County
P	7	26S	35E		101	SOUTH	1313	EAST	LEA
¹² Dedicated Acres 640.0	¹³ Joint or Infill	¹⁴ Consolidation Code	¹⁵ Order No.						

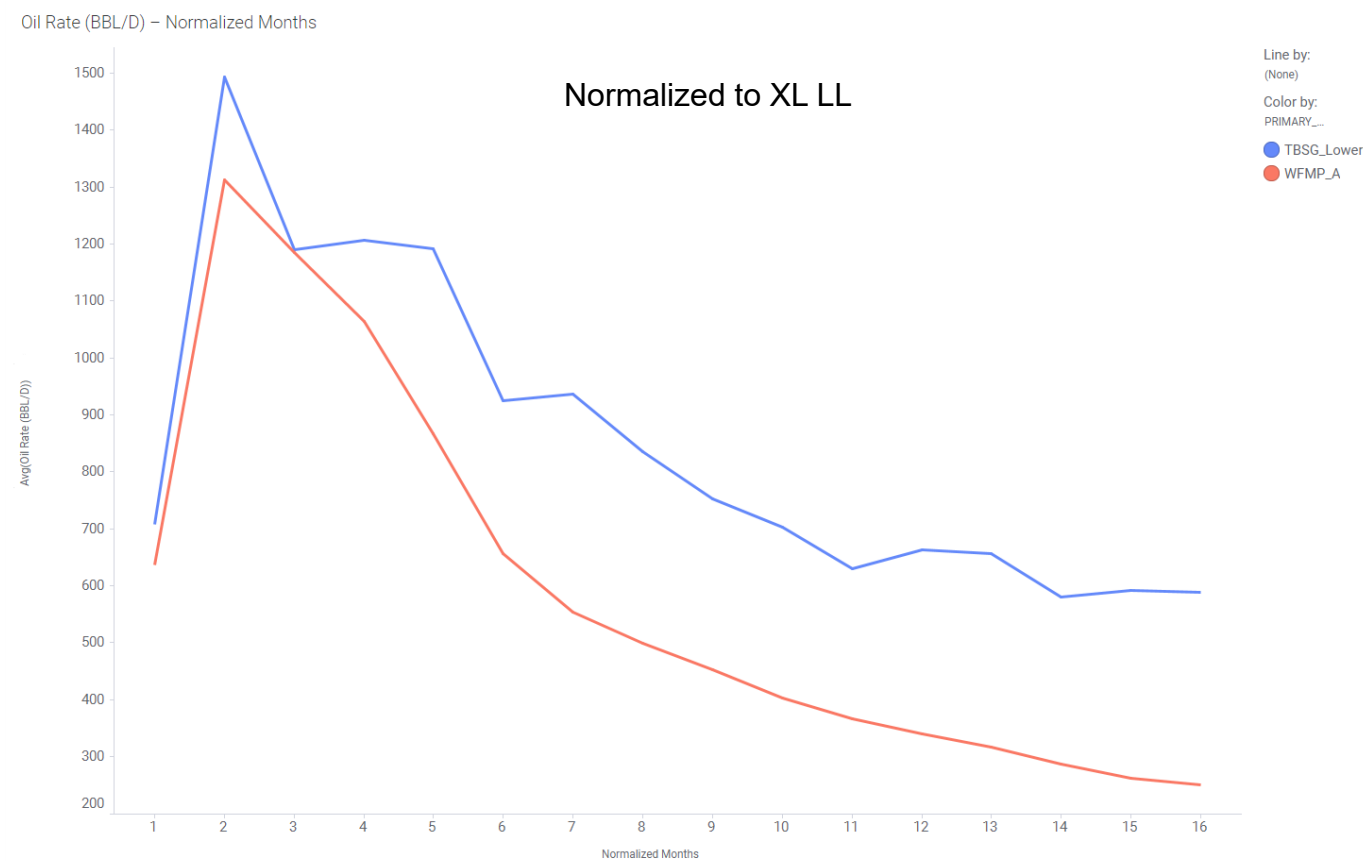
No allowable will be assigned to this completion until all interests have been consolidated or a non-standard unit has been approved by the division.

<p>Defining Well</p> <p>SHEET 1 OF 1 JOB No. R3954_003 REV 0 JCS 4/22/2020</p>	<p>CORNER COORDINATES NAD 83, SPCS NM EAST A - X: 831074.50' / Y: 388675.34' B - X: 831129.70' / Y: 383390.47' C - X: 828491.21' / Y: 383378.93' D - X: 828434.68' / Y: 388658.54' E - X: 828377.14' / Y: 393941.11' F - X: 831020.60' / Y: 393959.45'</p> <p>CORNER COORDINATES NAD 27, SPCS NM EAST A - X: 789886.87' / Y: 388617.77' B - X: 789941.84' / Y: 383333.04' C - X: 787303.38' / Y: 383321.52' D - X: 787247.09' / Y: 388600.99' E - X: 787189.78' / Y: 393883.42' F - X: 789833.21' / Y: 393901.73'</p> <p>SURFACE HOLE LOCATION 272' FNL 1171' FEL, SECTION 6 0' MEASURED DEPTH IN FEET NAD 83, SPCS NM EAST X: 829852.77' / Y: 393679.57' LAT: 32.0788054N / LON: 103.40182274W NAD 27, SPCS NM EAST X: 788665.38' / Y: 393621.88' LAT: 32.07875444N / LON: 103.40135930W</p> <p>KICK OFF POINT/FIRST TAKE POINT 389' FNL 1313' FEL, SECTION 7 17852' MEASURED DEPTH IN FEET NAD 83, SPCS NM EAST X: 829765.32' / Y: 388278.07' LAT: 32.06403599N / LON: 103.40225551W NAD 27, SPCS NM EAST X: 788577.69' / Y: 388220.52' LAT: 32.06390982N / LON: 103.40179291W</p> <p>LAST TAKE POINT 1210' FNL 1329' FEL, SECTION 7 18674' MEASURED DEPTH IN FEET NAD 83, SPCS NM EAST X: 829758.56' / Y: 387456.67' LAT: 32.06177845N / LON: 103.40230020W NAD 27, SPCS NM EAST X: 788570.90' / Y: 387399.14' LAT: 32.06165226N / LON: 103.40183773W</p> <p>BOTTOM HOLE LOCATION 101' FSL 1313' FEL, SECTION 7 22647' MEASURED DEPTH IN FEET NAD 83, SPCS NM EAST X: 829815.58' / Y: 383485.60' LAT: 32.05086216N / LON: 103.4022680W NAD 27, SPCS NM EAST X: 788627.71' / Y: 383428.18' LAT: 32.05073592N / LON: 103.40176496W</p>	<p>¹⁷ OPERATOR CERTIFICATION</p> <p>I hereby certify that the information contained herein is true and complete to the best of my knowledge and belief, and that this organization either owns a working interest or unleased mineral interest in the land including the proposed bottom hole location or has a right to drill this well at this location pursuant to a contract with an owner of such a mineral or working interest, or to a voluntary pooling agreement or a compulsory pooling order heretofore entered by the division.</p> <p> Signature Date 4/28/2020</p> <p>Adrian Covarrubias Printed Name</p> <p>E-mail Address</p> <p>¹⁸ SURVEYOR CERTIFICATION</p> <p>I hereby certify that the well surface location shown on this plat was plotted from field notes of the as-staked surveys made by me or under my supervision, and that the same is true and correct to the best of my belief. Data used for underground measurements were provided by others for reference only and does not constitute field measurements performed by R-Squared Global.</p> <p>Date of Survey</p> <p>Signature and Seal of Professional Surveyor:</p> <p>PRELIMINARY DOCUMENT IS NOT TO BE USED FOR CONSTRUCTION, BIDDING, RECORDATION, CONVEYANCE, SALE OF THE LANDS FOR THE ISSUANCE OF A PERMIT.</p> <p>Certificate Number</p>
-------------------------------------------------------------------------------------------------------------	-------------------------------------------------------------------------------------------------------------------------------------------------------------------------------------------------------------------------------------------------------------------------------------------------------------------------------------------------------------------------------------------------------------------------------------------------------------------------------------------------------------------------------------------------------------------------------------------------------------------------------------------------------------------------------------------------------------------------------------------------------------------------------------------------------------------------------------------------------------------------------------------------------------------------------------------------------------------------------------------------------------------------------------------------------------------------------------------------------------------------------------------------------------------------------------------------------------------------------------------------------------------------------------------------------------------------------------------------------------------------------------------------------------------------------------------------------------------------------------------------------------------------------------------------------------------------------------------------------------------------------------------------------------------------------------------------------------------------------------------------------------------------------------------------------------------------------------------------------------------------------------------------------------------------------------------------------------------------------------------------------------------------------------------------------------------------------------------------------------------------------------------------------------------------------------------------------	--------------------------------------------------------------------------------------------------------------------------------------------------------------------------------------------------------------------------------------------------------------------------------------------------------------------------------------------------------------------------------------------------------------------------------------------------------------------------------------------------------------------------------------------------------------------------------------------------------------------------------------------------------------------------------------------------------------------------------------------------------------------------------------------------------------------------------------------------------------------------------------------------------------------------------------------------------------------------------------------------------------------------------------------------------------------------------------------------------------------------------------------------------------------------------------------------------------------------------------------------------------------------------------------------------------------------------------------------------------------------------------------------------------------------------

Distances/areas relative to NAD 83 Combined Scale Factor: 0.99985058 Convergence Angle: 00°29'34.8000"

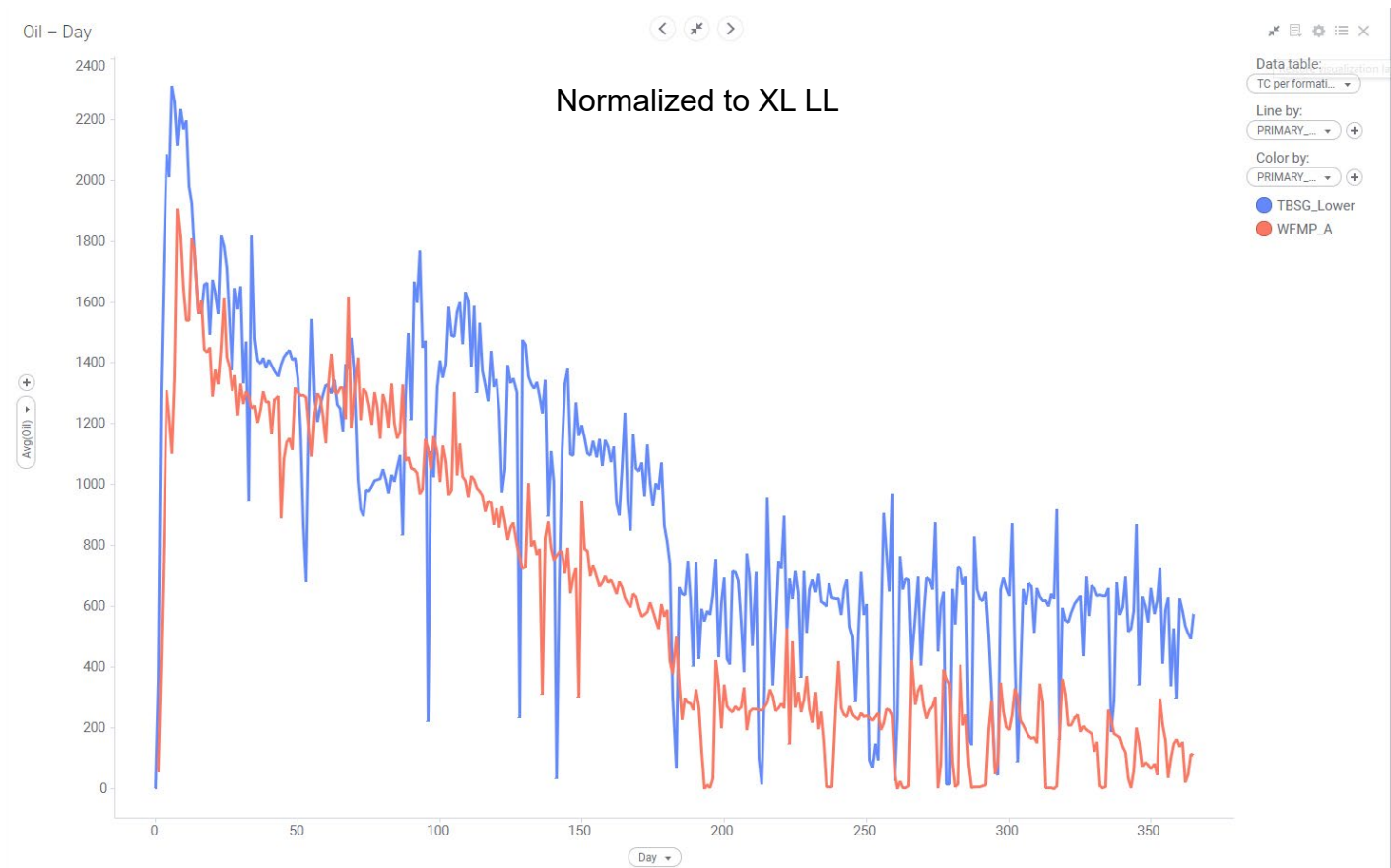
Public Data Oil Rates per Bench (Monthly)

Cave Lion and Square Bill Averages



Internal Data Oil Rates per Bench (Daily)

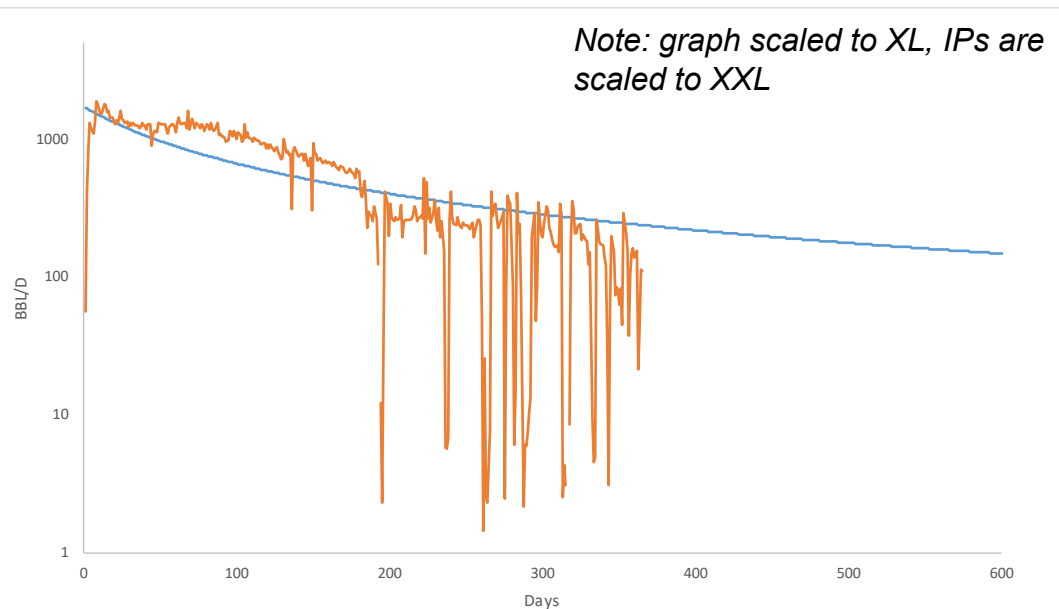
Cave Lion and Square Bill Averages



Oil Type Curve

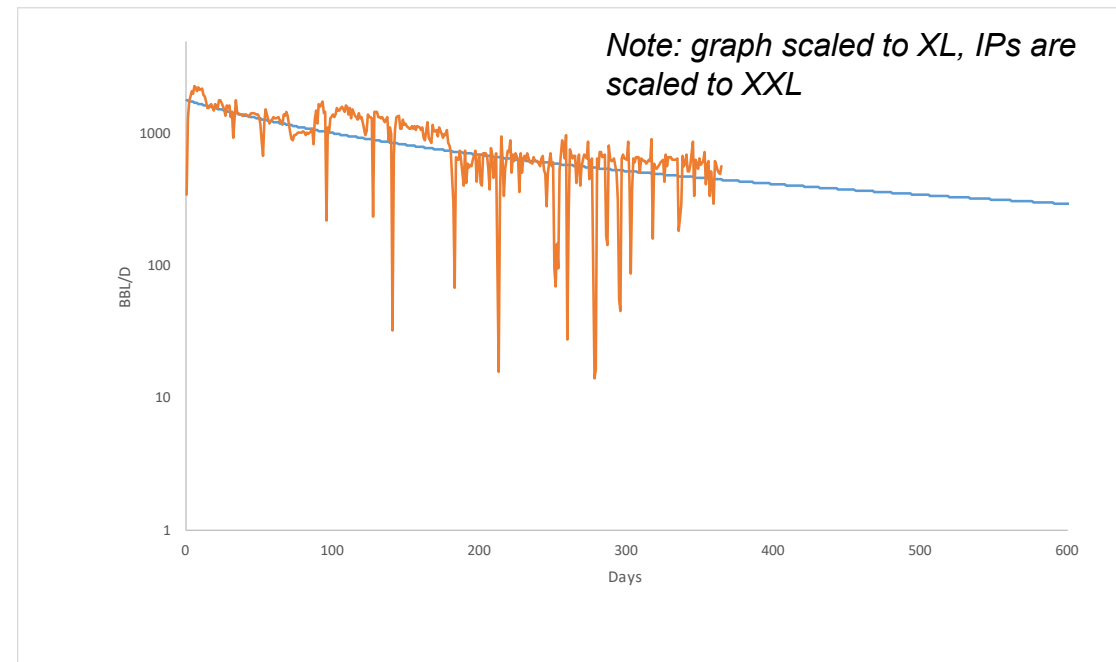
Based on Cave Lion and Square Bill Averages

WCU



Oil bbl/d: 1989
Water bbl/d: 3919
Gas mscf/d: 2691

TBSG_Lower



Oil bbl/d: 2106
Water bbl/d: 3510
Gas mscf/d: 3861

Ryan Gyllenband
Land Supervisor



Marathon Oil Permian LLC
5555 San Felipe Street
Houston, TX 77056
Telephone: 713.296.2453 Mobile: 281.684.7389
Fax: 713.513.4006
mrgyllenband@marathonoil.com

April 15, 2020

Mr. Dean McClure
Petroleum Specialist
New Mexico Energy, Minerals and Natural Resources Department
1220 South Francis Drive
Santa Fe, NM 87505

Re: Marathon Oil Permian LLC - Downhole Commingling Application
Charlie Murphy 6 TB Federal Com 14H Well (API# 30-025-46484)
Sections 6 & 7, T26S-R35E
Lea County, New Mexico

Mr. McClure,

Marathon Oil Permian LLC ("Marathon") has filed the attached application with the New Mexico Oil Conservation Division ("Division") for administrative approval to downhole commingle production from the WC-025 G-08 S253534O; Bone Spring Pool Code 97088 with the WC-025 G-09 S263504N; Wolfcamp Pool Code 98117 in the Charlie Murphy 6 TB Federal Com 14H Well (API# 30-025-46484) located in Sections 6 & 7, T26S-R35E, Lea County, New Mexico. This letter serves as notice that all interest owners are identical between both pools in the well and therefore no notice is required.

Should you have any questions please do not hesitate to contact me at 713-296-2453 or by email at mrgyllenband@marathonoil.com.

Sincerely,

A handwritten signature in blue ink, appearing to read 'B. Gyllenband', written in a cursive style.

Ryan Gyllenband
Land Supervisor
Lea County, New Mexico

Form 3160-5
(June 2015)UNITED STATES
DEPARTMENT OF THE INTERIOR
BUREAU OF LAND MANAGEMENTFORM APPROVED
OMB NO. 1004-0137
Expires: January 31, 2018**SUNDRY NOTICES AND REPORTS ON WELLS**
Do not use this form for proposals to drill or to re-enter an abandoned well. Use form 3160-3 (APD) for such proposals.5. Lease Serial No.
NMNM013647

6. If Indian, Allottee or Tribe Name

7. If Unit or CA/Agreement, Name and/or No.

8. Well Name and No.
CHARLIE MURPHY 6 TB FED COM 14H9. API Well No.
30-025-4648410. Field and Pool or Exploratory Area
WC025 G08 S2535340; BONE11. County or Parish, State
LEA COUNTY, NM**SUBMIT IN TRIPLICATE - Other instructions on page 2**

1. Type of Well

☒ Oil Well ☐ Gas Well ☐ Other

2. Name of Operator

MARATHON OIL PERMIAN LLC

Contact: ADRIAN COVARRUBIAS

E-Mail: acovarrubias@marathonoil.com

3a. Address

5555 SAN FELIPE ST
HOUSTON, TX 77056

3b. Phone No. (include area code)

Ph: 713-296-3368

4. Location of Well (Footage, Sec., T., R., M., or Survey Description)

Sec 6 T26S R35E Mer NMP NENE 272FNL 1171FEL

12. CHECK THE APPROPRIATE BOX(ES) TO INDICATE NATURE OF NOTICE, REPORT, OR OTHER DATA

TYPE OF SUBMISSION	TYPE OF ACTION			
<input checked="" type="checkbox"/> Notice of Intent	<input type="checkbox"/> Acidize	<input type="checkbox"/> Deepen	<input type="checkbox"/> Production (Start/Resume)	<input type="checkbox"/> Water Shut-Off
<input type="checkbox"/> Subsequent Report	<input type="checkbox"/> Alter Casing	<input type="checkbox"/> Hydraulic Fracturing	<input type="checkbox"/> Reclamation	<input type="checkbox"/> Well Integrity
<input type="checkbox"/> Final Abandonment Notice	<input type="checkbox"/> Casing Repair	<input type="checkbox"/> New Construction	<input type="checkbox"/> Recomplete	<input checked="" type="checkbox"/> Other
	<input type="checkbox"/> Change Plans	<input type="checkbox"/> Plug and Abandon	<input type="checkbox"/> Temporarily Abandon	
	<input type="checkbox"/> Convert to Injection	<input type="checkbox"/> Plug Back	<input type="checkbox"/> Water Disposal	

13. Describe Proposed or Completed Operation: Clearly state all pertinent details, including estimated starting date of any proposed work and approximate duration thereof. If the proposal is to deepen directionally or recompleat horizontally, give subsurface locations and measured and true vertical depths of all pertinent markers and zones. Attach the Bond under which the work will be performed or provide the Bond No. on file with BLM/BIA. Required subsequent reports must be filed within 30 days following completion of the involved operations. If the operation results in a multiple completion or recompleat in a new interval, a Form 3160-4 must be filed once testing has been completed. Final Abandonment Notices must be filed only after all requirements, including reclamation, have been completed and the operator has determined that the site is ready for final inspection.

Marathon is submitting the attached permit application to the OCD requesting to downhole commingle the Charlie Murphy 6 TB Fed Com 14H from the following pools:

WC-025 G-08 S2535340, Bone Spring
WC-025 G-09 S263504N; Wolfcamp

14. I hereby certify that the foregoing is true and correct.

**Electronic Submission #513161 verified by the BLM Well Information System
For MARATHON OIL PERMIAN LLC, sent to the Hobbs**

Name (Printed/Typed) ADRIAN COVARRUBIAS

Title REGULATORY PROFESSIONAL

Signature (Electronic Submission)

Date 04/28/2020

THIS SPACE FOR FEDERAL OR STATE OFFICE USE

Approved By

Title

Date

Conditions of approval, if any, are attached. Approval of this notice does not warrant or certify that the applicant holds legal or equitable title to those rights in the subject lease which would entitle the applicant to conduct operations thereon.

Office

Title 18 U.S.C. Section 1001 and Title 43 U.S.C. Section 1212, make it a crime for any person knowingly and willfully to make to any department or agency of the United States any false, fictitious or fraudulent statements or representations as to any matter within its jurisdiction.

(Instructions on page 2)

**** OPERATOR-SUBMITTED ** OPERATOR-SUBMITTED ** OPERATOR-SUBMITTED ****