

District I (575) 393-6161  
1625 N. French Dr., Hobbs, NM 88240  
District II (575) 748-1283  
811 S. First St., Artesia, NM 88210  
District III (505) 334-6178  
1000 Rio Brazos Road, Aztec, NM 87410  
District IV (505) 827-8198  
1220 S. St. Francis Dr., Santa Fe, NM 87505

State of New Mexico  
Energy Minerals and Natural Resources

Oil Conservation Division  
1220 South St. Francis Dr.  
Santa Fe, NM 87505

Form C-106  
Revised August 1, 2011

ACT Permit No. \_\_\_\_\_

**NOTICE OF INTENTION TO UTILIZE AUTOMATIC CUSTODY TRANSFER EQUIPMENT**

Operator Enduring Resources IV, LLC

Address 200 Energy Court Farmington, NM 87401 County San Juan

Lease(s) to be served by this ACT Unit: NMNM130812X (S Escavada Unit)

Pool(s) to be served by this ACT Unit Rusty Gallup Oil Pool (52860)

Location of ACT System: Unit F Section 26 Township 22N Range 7W

Order No. authorizing commingling between leases if more than one lease is to be served by this system.

R-14347 Date 5/15/2017

Order No. authorizing commingling between pools if more than one pool is to be served by this system

N/A Date N/A

Authorized transporter of oil from this system Enduring Resources IV, LLC

Transporter's address 200 Energy Court Farmington, NM 87401

Maximum expected daily through-put for this system: 2,000 BBL/Day

If system fails to transfer oil due to malfunction or otherwise, waste by overflow will be averted by:

CHECK ONE: A. ☐ Automatic shut-down facilities B. ☒ Providing adequate available capacity to receive production  
as required by 19.15.18.15.C(8) NMAC during maximum unattended time of lease operation  
19.15.18.15.C(9) NMAC

If "A" above is checked, will flowing wells be shut-in at the header manifold or at the wellhead?

NA Maximum well-head shut-in pressure N/A

If "B" above is checked, how much storage capacity is available above the normal high working level of the

surge tank 150 BBLs.

What is the normal maximum unattended time of lease operation? Sixteen (16) Hours.

What device will be used for measuring oil in this ACT unit?

CHECK ONE: ☐ Positive displacement meter ☐ Weir-type measuring vessel  
☐ Positive volume metering chamber ☒ Other; describe Coriolis Meter

Remarks: This LACT will be selling to pipeline.

**OPERATOR:**

I hereby certify above information is true and complete to best of my knowledge and subject ACT system will be installed and operated in accordance with Rule 19.15.18.15 NMAC. Approval of this Form

C-106 does not eliminate necessity of an approved C-104 prior to running any oil or gas from this system.

Signature 

Printed Name & Title Heather Huntington, Permitting Tech

E-mail Address hhuntington@enduringresources.com

Date 2/11/2021 Telephone (505) 636-9751

**OIL CONSERVATION DIVISION**

Approved by: \_\_\_\_\_

Title: \_\_\_\_\_

Date: \_\_\_\_\_

**INSTRUCTIONS:** Submit one copy of Form C-106 with following attachments to appropriate district office.

- 1) Lease plat showing all wells which will be produced in ACT system.
- 2) Schematic diagram of battery and ACT equipment showing all major components and means employed to prove accuracy of measuring device.
- 3) Letter from transporter agreeing to utilization of ACT system as shown on schematic diagram.

**NOTICE OF INTENTION TO UTILIZE AUTOMATIC CUSTODY TRANSFER EQUIPMENT  
S ESCAVADA UNIT 352H/353H/354H/359H/360H PIPELINE LACT UNIT:**

**WELLS TO BE SERVED BY PIPELINE LACT UNIT:**

- S ESCAVADA UNIT 352H / API # 30-043-21323/ UNIT F Sec. 26, T22N, R7W, NMPM
- S ESCAVADA UNIT 353H / API # 30-043-21320/ UNIT F Sec. 26, T22N, R7W, NMPM
- S ESCAVADA UNIT 354H / API # 30-043-21319/ UNIT F Sec. 26, T22N, R7W, NMPM
- S ESCAVADA UNIT 359H/ API # 30-043-21329/ UNIT A Sec. 30, T22N, R6W, NMPM
- S ESCAVADA UNIT 360H/ API # 30-043-21330/ UNIT A Sec. 30, T22N, R7W, NMPM

**19.15.18.15 AUTOMATIC CUSTODY TRANSFER EQUIPMENT:**

A. Oil shall be received and measured in facilities of an approved design. The facilities shall permit the testing of each well at reasonable intervals and may be comprised of manually gauged, closed stock tanks for which the operator of the ACT system has prepared proper strapping tables, or of ACT equipment. The division shall permit ACT equipment's use only after the operator complies with the following. The operator shall file with the division form C-106 and receive approval for use of the ACT equipment prior to transferring oil through the ACT system. The carrier shall not accept delivery of oil through the ACT system until the division has approved form C-106.

- *Summary is attached to Form C-106 Notice of Intent to Utilize Automatic Custody Transfer Equipment*

B. The operator of the ACT system shall submit form C-106 to the appropriate division district office, which is accompanied by the following:

- (1) plat of the lease showing all wells that the any well operator will produce into the ACT system;
- *Attached as part of Form C-106 Notice of Intent*

(2) schematic diagram of the ACT equipment, showing on the diagram all major components such as surge tanks and their capacity, extra storage tanks and their capacity, transfer pumps, monitors, reroute valves, treaters, samplers, strainers, air and gas eliminators, back pressure valves and metering devices (indicating type and capacity, *i.e.* whether automatic measuring tank, positive volume metering chamber, weir-type measuring vessel or positive displacement meter); the schematic diagram shall also show means employed to prove the measuring device's accuracy; and

- *Attached as part of Form C-106 Notice of Intent*

(3) letter from transporter agreeing to utilization of ACT system as shown on schematic diagram.

- *Attached as part of Form C-106 Notice of Intent*

C. The division shall not approve form C-106 unless the operator of the ACT system will install and operate the ACT system in compliance with the following requirements.

(1) Provision is made for accurate determination and recording of uncorrected volume and applicable temperature, or of temperature corrected volume. The system's overall accuracy shall equal or surpass manual methods.

- *The LACT system is more accurate when compared to a manual tank sale. It is proved per BLM Onshore Order #4 Measurement of Oil and API MPMS Chapter 4 Proving Systems; with a volumetric prover that meets the requirements set forth in Onshore Order #4. The LACT also has a temperature RTD which will be calibrated semi-annually, unless more frequent verification is requested by the division.*

(2) Provision is made for representative sampling of the oil transferred for determination of API gravity and BS&W content.

- *The LACT is equipped with a flow proportional sampler (sample probe and actuated valve). The sampled fluid is stored in a sealed cylinder that is used for API gravity and S&W determination.*

(3) Provision is made if required by either the oil's producer or the transporter to give adequate assurance that the ACT system runs only merchantable oil.

- *The LACT is equipped with a water cut analyzer that communicates with the flow computer. When the S&W set point is reached the divert valve will engage sending non-merchantable oil to a divert tank. The set point can be adjusted in the flow computer but only if agreed upon by both shipper and producer.*

District I  
1625 N. French Drive, Hobbs, NM 88240  
Phone: (505) 393 6161 Fax: (505) 393-0720

District II  
811 S. First Street, Artesia, NM 88210  
Phone: (505) 746-1283 Fax: (505) 746-9720

District III  
1000 Rio Brazos Road, Aztec, NM 87410  
Phone: (505) 334-6178 Fax: (505) 334 6170

District IV  
1220 S. St. Francis Drive, Santa Fe, NM 87505  
Phone: (505) 476-3460 Fax: (505) 476 3462

State of New Mexico  
Energy, Minerals & Natural Resources Department

Form C-102  
Revised August 1, 2011

Submit one copy to  
Appropriate District Office

OIL CONSERVATION DIVISION

1220 South St. Francis Drive  
Santa Fe, NM 87505

☐ AMENDED REPORT

AS DRILLED

WELL LOCATION AND ACREAGE DEDICATION PLAT

<sup>1</sup> API Number <b>30-043-21323</b>	<sup>2</sup> Pool Code <b>52860</b>	<sup>3</sup> Pool Name <b>RUSTY GALLUP OIL POOL</b>
<sup>4</sup> Property Code <b>322151</b>	<sup>5</sup> Property Name <b>S ESCAVADA UNIT</b>	<sup>6</sup> Well Number <b>352H</b>
<sup>7</sup> GRID No. <b>372286</b>	<sup>8</sup> Operator Name <b>ENDURING RESOURCES, LLC</b>	<sup>9</sup> Elevation <b>6776'</b>

<sup>10</sup> Surface Location

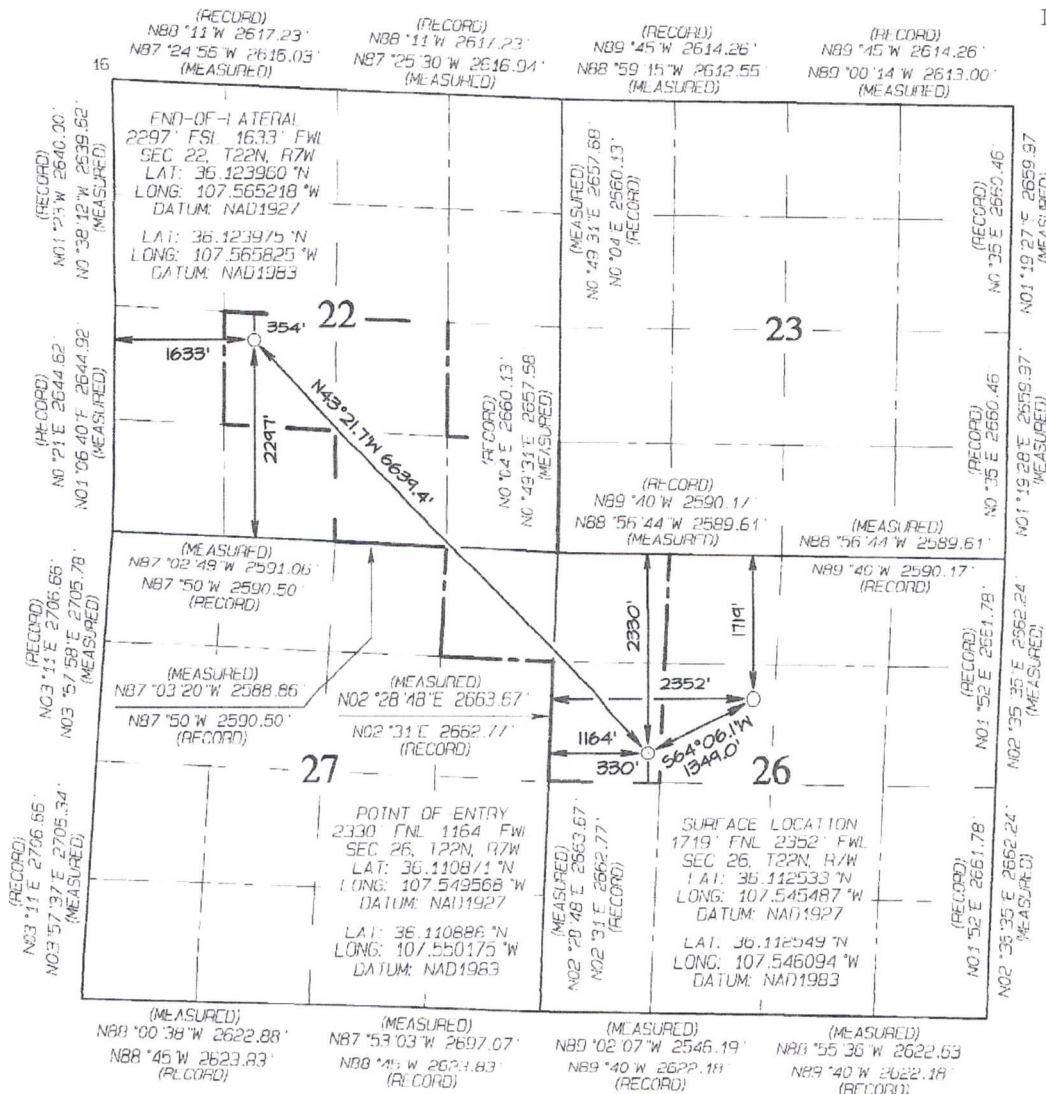
UL or lot no.	Section	Township	Range	Lot Idn	Feet from the	North/South line	Feet from the	East/West line	County
<b>F</b>	<b>26</b>	<b>22N</b>	<b>7W</b>		<b>1719</b>	<b>NORTH</b>	<b>2352</b>	<b>WLST</b>	<b>SANDOVAL</b>

<sup>11</sup> Bottom Hole Location If Different From Surface

UL or lot no.	Section	Township	Range	Lot Idn	Feet from the	North/South line	Feet from the	East/West line	County
<b>K</b>	<b>22</b>	<b>22N</b>	<b>7W</b>		<b>2297</b>	<b>SOUTH</b>	<b>1633</b>	<b>WEST</b>	<b>SANDOVAL</b>

<sup>12</sup> Dedicated Acres <b>280.00</b>	<sup>13</sup> Joint or Infill	<sup>14</sup> Consolidation Code	<sup>15</sup> Order No. <b>R-14347</b>
NE/4 SW/4, W/2 SE/4 SE/4 SE/4 - Section 22 W/2 NW/4 - Section 26 NE/4 NE/4 - Section 27			

NO ALLOWABLE WELL BE ASSIGNED  
TO THIS COMPLETION UNTIL ALL  
INTERESTS HAVE BEEN CONSOLIDATED  
OR A NON-STANDARD UNIT HAS  
BEEN APPROVED BY THE DIVISION



<sup>17</sup> OPERATOR CERTIFICATION

I hereby certify that the information contained herein is true and complete to the best of my knowledge and belief, and that this organization either owns a working interest or unleased mineral interest in the land including the proposed bottom-hole location or has a right to drill this well at this location pursuant to a contract with an owner of such a mineral or working interest, or to a voluntary pooling agreement or a compulsory pooling order heretofore entered by the division.

10/4/18

Signature  
Lacey Granillo

Date

Printed Name  
lgranillo@enduringresources.com

E-mail Address

<sup>18</sup> SURVEYOR CERTIFICATION

I hereby certify that the well location shown on this plat was plotted from field notes of actual surveys made by me or under my supervision, and that the same is true and correct to the best of my belief.

Date Revised: OCTOBER 3, 2018  
Date of Survey: JUNE 6, 2017

Signature and Seal of Professional Surveyor



JASON C. EDWARDS

Certificate Number 15269



District I  
1625 N. French Drive, Hobbs, NM 88240  
Phone: (575) 393-6161 Fax: (575) 393-0720

District II  
811 S. First Street, Artesia, NM 88210  
Phone: (575) 748-1263 Fax: (575) 748-9720

District III  
1000 Rio Brazos Road, Aztec, NM 87410  
Phone: (505) 334-6178 Fax: (505) 334-6170

District IV  
1220 S. St. Francis Drive, Santa Fe, NM 87505  
Phone: (505) 476-3460 Fax: (505) 476-3462

State of New Mexico  
Energy, Minerals & Natural Resources Department

Form C-102  
Revised August 1, 2011

Submit one copy to  
Appropriate District Office

OIL CONSERVATION DIVISION  
1220 South St. Francis Drive  
Santa Fe, NM 87505

☐ AMENDED REPORT  
As Drilled

WELL LOCATION AND ACREAGE DEDICATION PLAT

*API Number 30-043-21320		*Pool Code 52860		*Pool Name RUSTY GALLUP OIL POOL	
*Property Code 322151		*Property Name S ESCAVADA UNIT		*Well Number 353H	
*GRID No. 3/2286		*Operator Name ENDURING RESOURCES, LLC		*Elevation 6776'	

10 Surface Location

UL or lot no.	Section	Township	Range	Lot Ion	Feet from the	North/South line	Feet from the	East/West line	County
F	26	22N	7W		1724	NORTH	2332	WEST	SANDOVAL

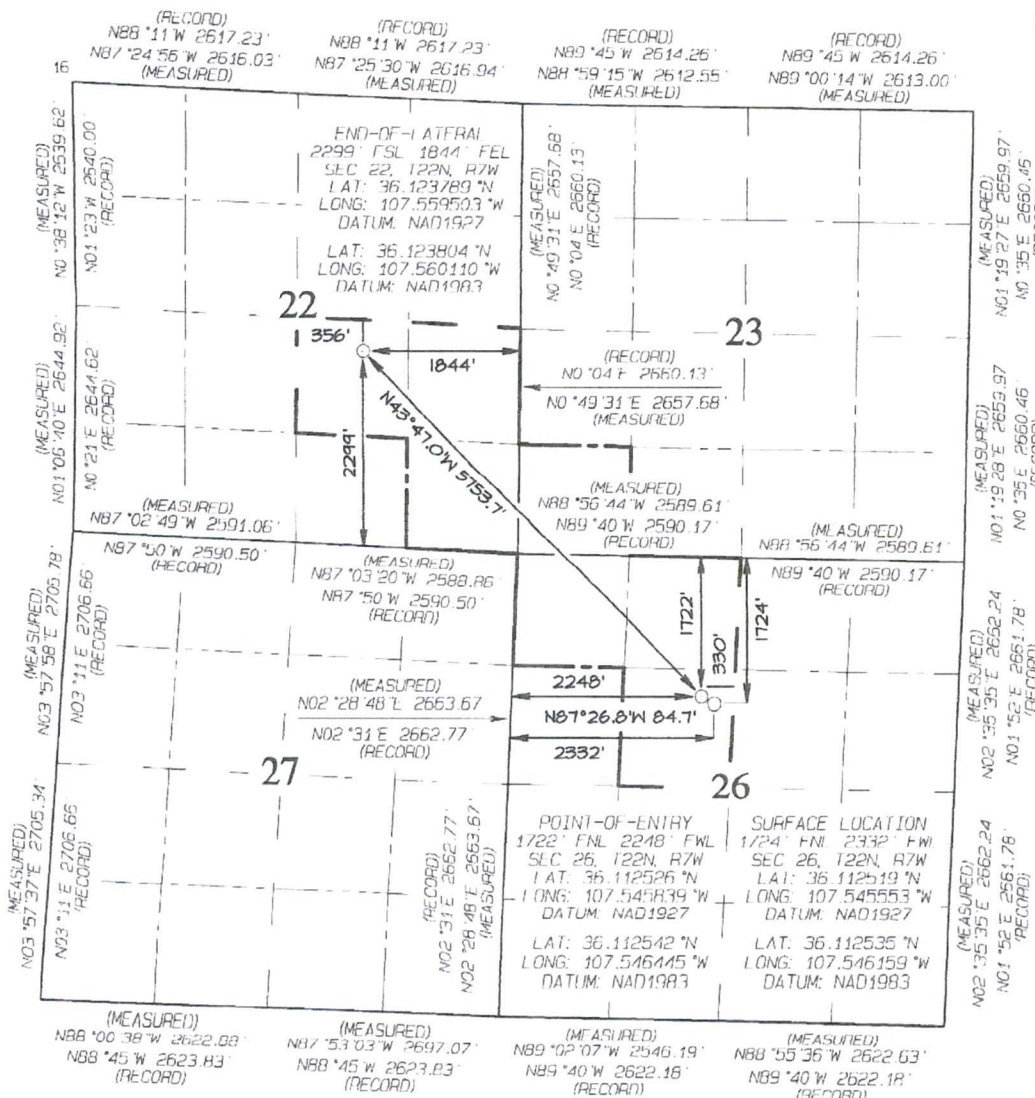
11 Bottom Hole Location If Different From Surface

UL or lot no.	Section	Township	Range	Lot Ion	Feet from the	North/South line	Feet from the	East/West line	County
J	22	22N	7W		2299	SOUTH	1844	EAST	SANDOVAL

12 Dedicated Acres  
280.00 SW/4 SW/4 - Section 23  
N/2 SE/4, SE/4 SE/4 - Section 22  
N/2 NW/4, SE/4 NW/4 - Section 26

13 Joint or Infill  
14 Consolidation Code  
15 Order No.  
R-14347

NO ALLOWABLE WILL BE ASSIGNED  
TO THIS COMPLETION UNTIL ALL  
INTERESTS HAVE BEEN CONSOLIDATED  
OR A NON-STANDARD UNIT HAS  
BEEN APPROVED BY THE DIVISION



17 OPERATOR CERTIFICATION

I hereby certify that the information contained herein is true and complete to the best of my knowledge and belief, and that this organization either owns a working interest or unleased mineral interest in the land including the proposed bottom-hole location or has a right to drill this well at this location pursuant to a contract with an owner of such a mineral or working interest, or to a voluntary pooling agreement or a compulsory pooling order heretofore entered by the division.

10/4/18

Signature  
Lacey Granillo  
Printed Name  
lgranillo@enduringresources.com  
E-mail Address

18 SURVEYOR CERTIFICATION

I hereby certify that the well location shown on this plat was plotted from field notes of actual surveys made by me or under my supervision, and that the same is true and correct to the best of my belief.

Date Revised: OCTOBER 3, 2018  
Date of Survey: JUNE 6, 2017

Signature and Seal of Professional Surveyor



JASON C. EDWARDS  
Certificate Number 15269

District I  
1625 N. French Drive, Hobbs, NM 88240  
Phone: (575) 393-6161 Fax: (575) 393-0720

District II  
811 S. First Street, Artesia, NM 88210  
Phone: (575) 748-1283 Fax: (575) 748-9720

District III  
1000 Rio Brazos Road, Aztec, NM 87410  
Phone: (505) 334-6178 Fax: (505) 334-6170

District IV  
1220 S. St. Francis Drive, Santa Fe, NM 87505  
Phone: (505) 476-3460 Fax: (505) 476-3462

State of New Mexico  
Energy, Minerals & Natural Resources Department

Form C-102  
Revised August 1, 2011

Submit one copy to  
Appropriate District Office

OIL CONSERVATION DIVISION  
1220 South St. Francis Drive  
Santa Fe, NM 87505

☐ AMENDED REPORT

WELL LOCATION AND ACREAGE DEDICATION PLAT

*API Number 30-043-21319		*Pool Code 52860	*Pool Name RUSTY GALLUP OIL POOL
*Property Code 322151	*Property Name S ESCAVADA UNIT		*Well Number 354H
*GRID No. 372286	*Operator Name Enduring Resources IV LLC		*Elevation 6776'

<sup>10</sup> Surface Location

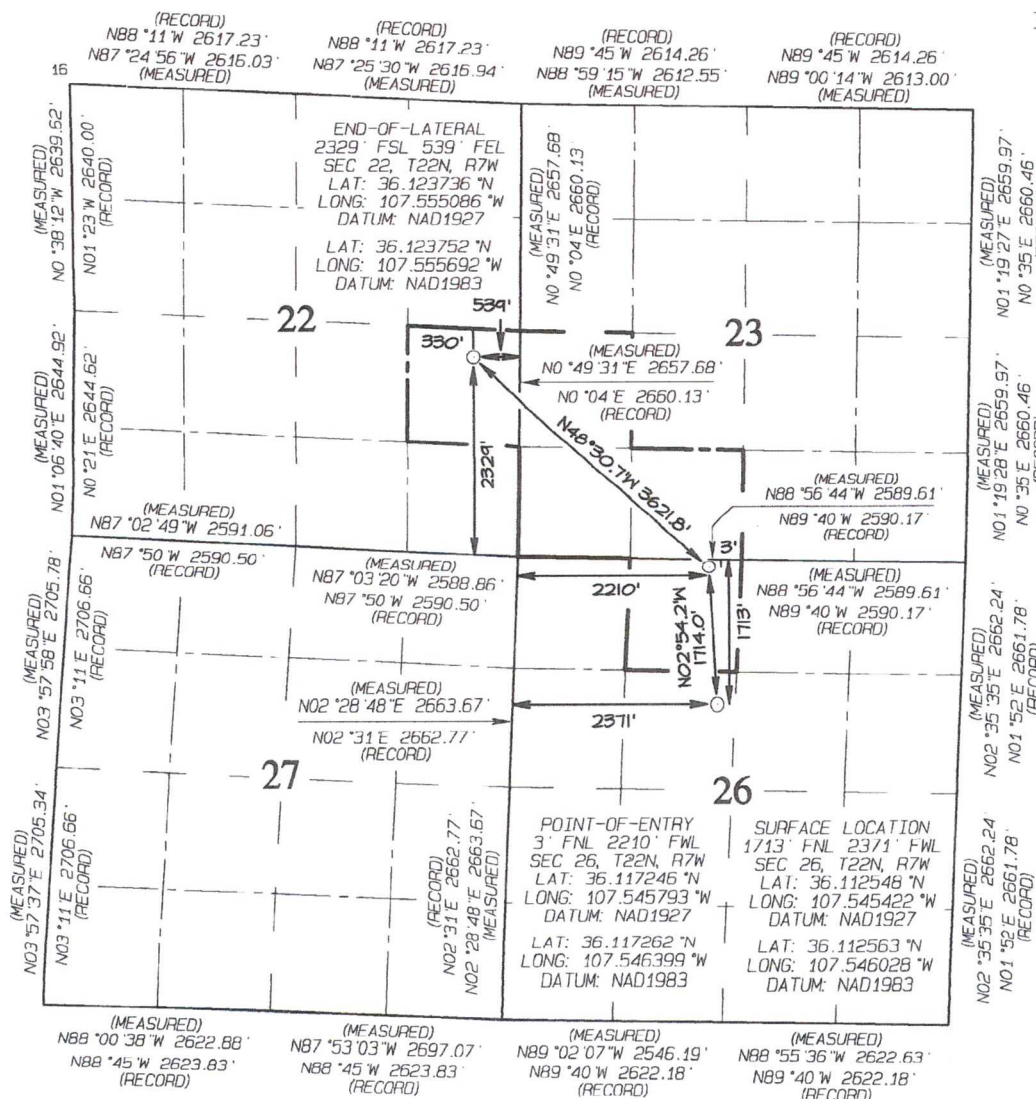
UL or lot no.	Section	Township	Range	Lot Idn	Feet from the	North/South line	Feet from the	East/West line	County
F	26	22N	7W		1713	NORTH	2371	WEST	SANDOVAL

<sup>11</sup> Bottom Hole Location If Different From Surface

UL or lot no.	Section	Township	Range	Lot Idn	Feet from the	North/South line	Feet from the	East/West line	County
I	22	22N	7W		2329	SOUTH	539	EAST	SANDOVAL

<sup>12</sup> Dedicated Acres 200.00 NE/4 SE/4 - Section 22 NW/4 SW/4, S/2 SW/4 - Section 23 NE/4 NW/4 - Section 26					<sup>13</sup> Joint or Infill	<sup>14</sup> Consolidation Code	<sup>15</sup> Order No. R-14347
--	--	--	--	--	-------------------------------	----------------------------------	------------------------------------

NO ALLOWABLE WILL BE ASSIGNED  
TO THIS COMPLETION UNTIL ALL  
INTERESTS HAVE BEEN CONSOLIDATED  
OR A NON-STANDARD UNIT HAS  
BEEN APPROVED BY THE DIVISION



<sup>17</sup> OPERATOR CERTIFICATION

I hereby certify that the information contained herein is true and complete to the best of my knowledge and belief, and that this organization either owns a working interest or unleased mineral interest in the land including the proposed bottom-hole location or has a right to drill this well at this location pursuant to a contract with an owner of such a mineral or working interest, or to a voluntary pooling agreement or a compulsory pooling order heretofore entered by the division.

Signature *Lacey Granillo* Date *10/4/18*

Printed Name  
Lacey Granillo

lgranillo@enduringresources.com

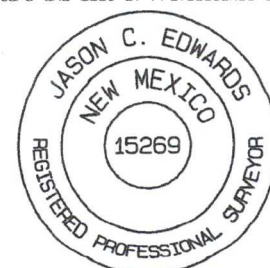
E-mail Address

<sup>18</sup> SURVEYOR CERTIFICATION

I hereby certify that the well location shown on this plat was plotted from field notes of actual surveys made by me or under my supervision, and that the same is true and correct to the best of my belief.

Date Revised: FEBRUARY 21, 2018  
Date of Survey: JUNE 6, 2017

Signature and Seal of Professional Surveyor



JASON C. EDWARDS

Certificate Number 15269



District I  
1625 N. French Drive, Hobbs, NM 88240  
Phone: (575) 393-6161 Fax: (575) 393-0720  
District II  
811 S. First Street, Artesia, NM 88210  
Phone: (575) 748-1283 Fax: (575) 748-9720  
District III  
1000 Rio Brazos Road, Aztec, NM 87410  
Phone: (505) 334-6178 Fax: (505) 334-6170  
District IV  
1220 S. St. Francis Drive, Santa Fe, NM 87505  
Phone: (505) 476-3460 Fax: (505) 476-3462

State of New Mexico  
Energy, Minerals & Natural Resources Department

Form C-102  
Revised August 1, 2011

Submit one copy to  
Appropriate District Office

OIL CONSERVATION DIVISION  
1220 South St. Francis Drive  
Santa Fe, NM 87505

☐ AMENDED REPORT

WELL LOCATION AND ACREAGE DEDICATION PLAT

*API Number <b>30-043-21329</b>	*Pool Code <b>52860</b>	*Pool Name <b>RUSTY GALLUP OIL POOL</b>
*Property Code <b>322151</b>	*Property Name <b>S ESCAVADA UNIT</b>	*Well Number <b>359H</b>
*GRID No. <b>372286</b>	*Operator Name <b>ENDURING RESOURCES, LLC</b>	*Elevation <b>6906'</b>

<sup>10</sup> Surface Location

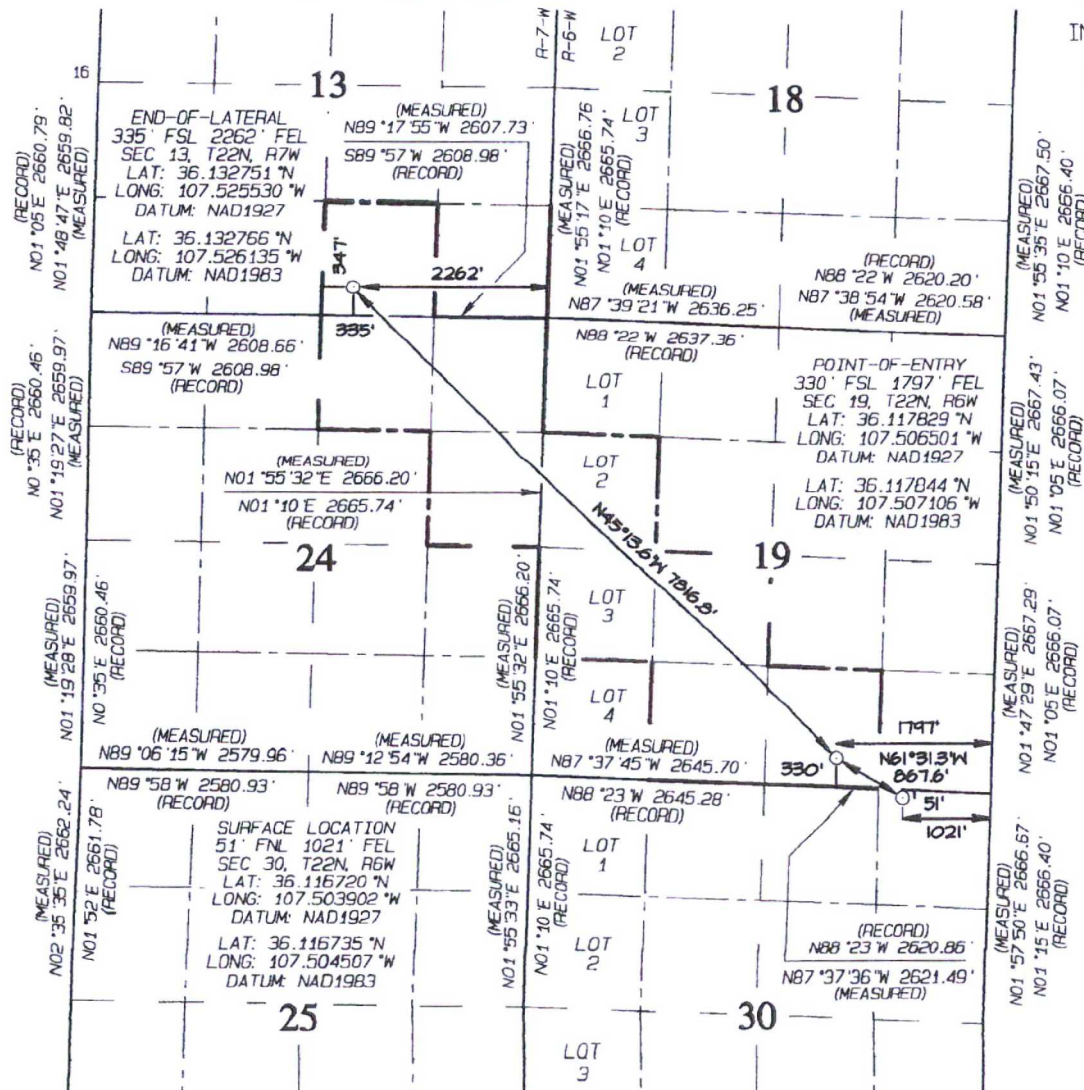
UL or lot no.	Section	Township	Range	Lot Idn	Feet from the	North/South line	Feet from the	East/West line	County
A	30	22N	6W		51	NORTH	1021	EAST	SANDOVAL

<sup>11</sup> Bottom Hole Location If Different From Surface

UL or lot no.	Section	Township	Range	Lot Idn	Feet from the	North/South line	Feet from the	East/West line	County
0	13	22N	7W		335	SOUTH	2262	EAST	SANDOVAL

<sup>12</sup> Dedicated Acres <b>361.28</b>	<b>SW/4 SE/4 - Section 13</b> <b>SW/4 NW/4, N/2 SW/4</b> <b>SE/4 SW/4, SW/4 SE/4 - Section 19</b> <b>N/2 NE/4, SE/4 NE/4 - Section 24</b>	<sup>13</sup> Joint or Infill <b></b>	<sup>14</sup> Consolidation Code <b></b>	<sup>15</sup> Order No. <b>R-14347</b>
--	--	--	---	---

NO ALLOWABLE WILL BE ASSIGNED  
TO THIS COMPLETION UNTIL ALL  
INTERESTS HAVE BEEN CONSOLIDATED  
OR A NON-STANDARD UNIT HAS  
BEEN APPROVED BY THE DIVISION



<sup>17</sup> OPERATOR CERTIFICATION

I hereby certify that the information contained herein is true and complete to the best of my knowledge and belief, and that this organization either owns a working interest or unleased mineral interest in the land including the proposed bottom-hole location or has a right to drill this well at this location pursuant to a contract with an owner of such a mineral or working interest, or to a voluntary pooling agreement or a compulsory pooling order heretofore entered by the division.

Signature: *[Signature]* Date: **10/18/19**  
Printed Name: **Jason C. Edwards**  
E-mail Address: **JasonC@enduringresources.com**

<sup>18</sup> SURVEYOR CERTIFICATION

I hereby certify that the well location shown on this plat was plotted from field notes of actual surveys made by me or under my supervision, and that the same is true and correct to the best of my belief.

Date Revised: **SEPTEMBER 3, 2019**  
Date of Survey: **JULY 17, 2018**

Signature and Seal of Professional Surveyor



**JASON C. EDWARDS**  
Certificate Number 15269



District I  
1625 N. French Drive, Hobbs, NM 88240  
Phone: (575) 393-6161 Fax: (575) 393-0720

District II  
811 S. First Street, Artesia, NM 88210  
Phone: (575) 748-1263 Fax: (575) 748-9720

District III  
1000 Rio Brazos Road, Aztec, NM 87410  
Phone: (505) 334-6178 Fax: (505) 334-6170

District IV  
1220 S. St. Francis Drive, Santa Fe, NM 87505  
Phone: (505) 476-3460 Fax: (505) 476-3462

State of New Mexico  
Energy, Minerals & Natural Resources Department

Form C-102  
Revised August 1, 2011

Submit one copy to  
Appropriate District Office

OIL CONSERVATION DIVISION  
1220 South St. Francis Drive  
Santa Fe, NM 87505

☐ AMENDED REPORT

WELL LOCATION AND ACREAGE DEDICATION PLAT

*API Number 30.043.21330		*Pool Code 52860	*Pool Name RUSTY GALLUP OIL POOL
*Property Code 322151	*Property Name S ESCAVADA UNIT		*Well Number 360H
*GRID No. 372286	*Operator Name ENDURING RESOURCES, LLC		*Elevation 6906'

<sup>10</sup> Surface Location

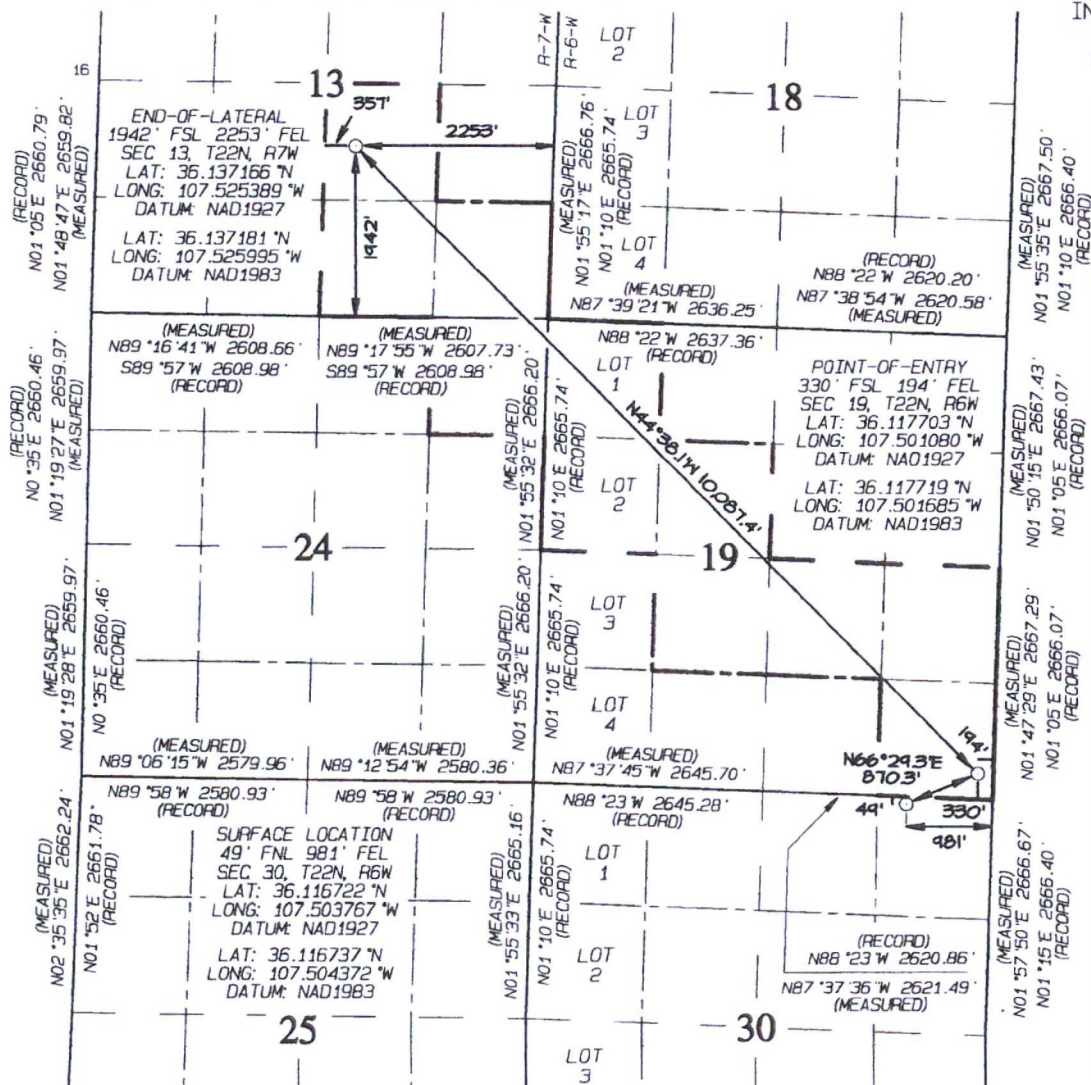
UL or lot no.	Section	Township	Range	Lot Idn	Feet from the	North/South line	Feet from the	East/West line	County
A	30	22N	6W		49	NORTH	981	EAST	SANDOVAL

<sup>11</sup> Bottom Hole Location If Different From Surface

UL or lot no.	Section	Township	Range	Lot Idn	Feet from the	North/South line	Feet from the	East/West line	County
J	13	22N	7W		1942	SOUTH	2253	EAST	SANDOVAL

<sup>12</sup> Dedicated Acres 441.16 NE/4 NE/4 - Section 24 NW/4 SE/4, S/2 SE/4 - Section 13 W/2 NW/4, SE/4 NW/4, NE/4 SW/4 N/2 SE/4, SE/4 SE/4 - Section 19		<sup>13</sup> Joint or Infill	<sup>14</sup> Consolidation Code	<sup>15</sup> Order No. R-14347
--	--	-------------------------------	----------------------------------	------------------------------------

NO ALLOWABLE WILL BE ASSIGNED  
TO THIS COMPLETION UNTIL ALL  
INTERESTS HAVE BEEN CONSOLIDATED  
OR A NON-STANDARD UNIT HAS  
BEEN APPROVED BY THE DIVISION



<sup>17</sup> OPERATOR CERTIFICATION

I hereby certify that the information contained herein is true and complete to the best of my knowledge and belief, and that this organization either owns a working interest or unleased mineral interest in the land including the proposed bottom-hole location or has a right to drill this well at this location pursuant to a contract with an owner of such a mineral or working interest, or to a voluntary pooling agreement or a compulsory pooling order heretofore entered by the division.

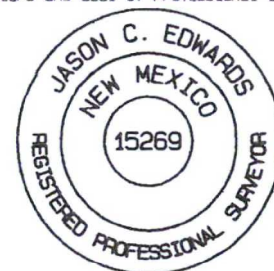
Signature: *[Signature]* Date: 10/18/19  
Printed Name: *[Name]*  
E-mail Address: *[Email]*

<sup>18</sup> SURVEYOR CERTIFICATION

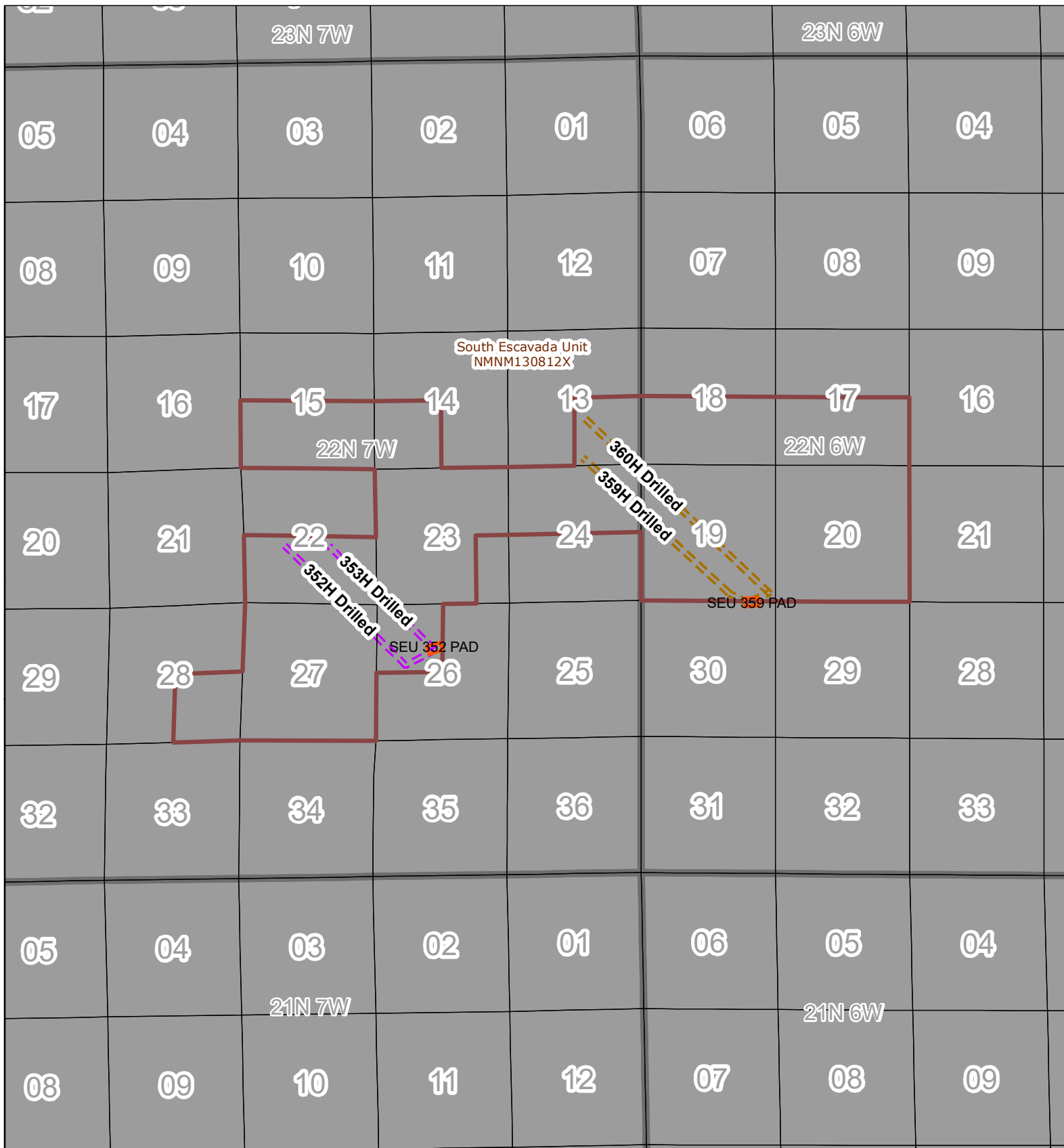
I hereby certify that the well location shown on this plat was plotted from field notes of actual surveys made by me or under my supervision, and that the same is true and correct to the best of my belief.

Date Revised: SEPTEMBER 3, 2019  
Date of Survey: JULY 17, 2018

Signature and Seal of Professional Surveyor



JASON C. EDWARDS  
Certificate Number 15269



## SEU 359H Lease Plat Map



0 0.5 1 2 Miles



**ENDURING  
RESOURCES, LLC**

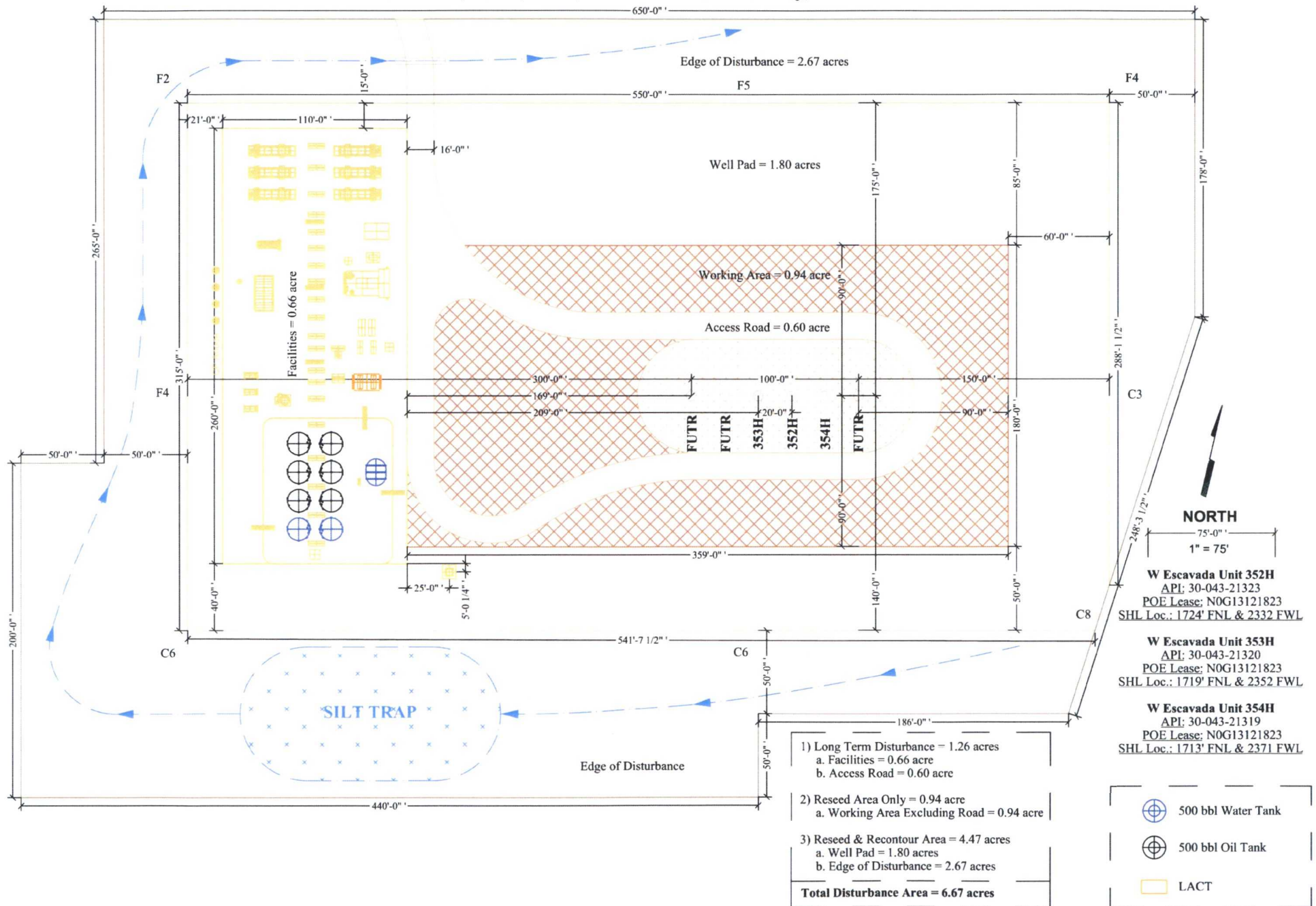
Data Source Statement:  
BLM-FFO, Enduring Resources GIS, ESRI Inc.,  
NCE Surveys, USGS

Author: drogers

Date: 2/11/2021



**Enduring Resources IV, LLC's S Escavada Unit 352H Well Pad Facility Diagram**  
**Section 26, T22N, R7W, NMPM Sandoval County, New Mexico**





THIS DOCUMENT, WHETHER CONTAINING PATENTABLE OR NONPATENTABLE SUBJECT MATTER EMBODIES THE PROPRIETARY AND CONFIDENTIAL INFORMATION OF HENRY PRODUCTION INC. AND PUMPS AND SERVICE. IT IS LOANED IN CONFIDENCE WITH THE UNDERSTANDING THAT IT WILL NOT BE REPRODUCED, USED OR DISCLOSED FOR ANY PURPOSE EXCEPT THE LIMITED PURPOSE FOR WHICH IT IS LOANED. THIS DOCUMENT SHALL BE RETURNED TO HENRY PRODUCTION INC. OR PUMPS AND SERVICE UPON DEMAND.



**From:** [Alex Campbell](#)  
**To:** [Heather Huntington](#); [John Conley](#)  
**Cc:** [Travis Whitham](#); [Tim Friesenhahn](#); [Bobby McCracken](#)  
**Subject:** Re: S Escavada Unit 352 Pad Pipeline Transfer LACT Unit C-106: Amendment to add additional wells  
**Date:** Thursday, February 11, 2021 1:03:52 PM  
**Importance:** High

---

Alex B. Campbell on behalf of Enduring Resources LLC is in agreement to the utilization of the LACT unit as provided below.

Alex B. Campbell  
Vice President  
Enduring Resources, LLC  
1050 17<sup>th</sup> Street, Suite 2500  
Denver, Colorado 80265  
Telephone Number (303) 350-5107  
Facsimile Number (303) 573-0461  
Cell Phone Number (303) 929-8429

**CONFIDENTIALITY / PRIVILEGE NOTICE**

This communication and any attachment(s) are confidential and/or privileged, and are for the sole use of the intended addressee(s). If you receive this transmission in error, you are advised that any unauthorized review, use, disclosure, or distribution is strictly prohibited. In such event, please contact the sender by return email and destroy all copies of the original message and any attachment(s). Thank you.

---

**From:** Heather Huntington <Hhuntington@enduringresources.com>  
**Date:** Thursday, February 11, 2021 at 11:31 AM  
**To:** Alex Campbell <ACampbell@enduringresources.com>, John Conley <JConley@enduringresources.com>  
**Cc:** Travis Whitham <TWhitham@enduringresources.com>, Tim Friesenhahn <TFriesenhahn@enduringresources.com>, Bobby McCracken <BMcCracken@enduringresources.com>  
**Subject:** S Escavada Unit 352 Pad Pipeline Transfer LACT Unit C-106: Amendment to add additional wells

Alex/John-

Enduring is requesting to amend their current S Escavada Unit 352 Pad Pipeline Transfer LACT Unit C-106 approval. Currently, Enduring is approved through the NMOCD Aztec office for the transfer of the following wells through the approved LACT unit into Enduring's system:

- S ESCAVADA UNIT 352H / API # 30-043-21323/ UNIT F Sec. 26, T22N, R7W, NMPM
- S ESCAVADA UNIT 353H / API # 30-043-21320/ UNIT F Sec. 26, T22N, R7W, NMPM

- **S ESCAVADA UNIT 354H / API # 30-043-21319/ UNIT F Sec. 26, T22N, R7W, NMPM**

Permission is needed from Enduring to Enduring to produce the following additional wells in **red** through this existing LACT system. LACT will be proved per regulatory requirements.

**S ESCAVADA UNIT 352H, 353H, 354H, 359H, & 360H PIPELINE LACT UNIT**

- **S ESCAVADA UNIT 359H/ API # 30-043-21329/ UNIT A Sec. 30, T22N, R6W, NMPM**
- **S ESCAVADA UNIT 360H/ API # 30-043-21330/ UNIT A Sec. 30, T22N, R7W, NMPM**

**Will one of you please reply back to this email confirming you are in agreement to the utilization of this LACT Unit?**

Thank you,

Heather Huntington  
Enduring Resources Permitting Technician  
505-636-9751