

Submit 1 Copy To Appropriate District Office  
District I – (575) 393-6161  
1625 N. French Dr., Hobbs, NM 88240  
District II – (575) 748-1283  
811 S. First St., Artesia, NM 88210  
District III – (505) 334-6178  
1000 Rio Brazos Rd., Aztec, NM 87410  
District IV – (505) 476-3460  
1220 S. St. Francis Dr., Santa Fe, NM 87505

State of New Mexico  
Energy, Minerals and Natural Resources

Form C-103  
Revised July 18, 2013

OIL CONSERVATION DIVISION  
1220 South St. Francis Dr.  
Santa Fe, NM 87505

WELL API NO. 30-015-46925
5. Indicate Type of Lease STATE <input type="checkbox"/> FEE <input type="checkbox"/>
6. State Oil & Gas Lease No.
7. Lease Name or Unit Agreement Name Boros Fed
8. Well Number 114H
9. OGRID Number 228937
10. Pool name or Wildcat Jennings; Bone Spring [97860]
4. Well Location Unit Letter <u>A</u> : <u>430</u> feet from the <u>North</u> line and <u>740</u> feet from the <u>East</u> line Section <u>15</u> Township <u>26S</u> Range <u>31E</u> NMPM <u>Eddy</u> County
11. Elevation (Show whether DR, RKB, RT, GR, etc.)

12. Check Appropriate Box to Indicate Nature of Notice, Report or Other Data

NOTICE OF INTENTION TO:		SUBSEQUENT REPORT OF:	
PERFORM REMEDIAL WORK <input type="checkbox"/>	PLUG AND ABANDON <input type="checkbox"/>	REMEDIAL WORK <input type="checkbox"/>	ALTERING CASING <input type="checkbox"/>
TEMPORARILY ABANDON <input type="checkbox"/>	CHANGE PLANS <input type="checkbox"/>	COMMENCE DRILLING OPNS. <input type="checkbox"/>	P AND A <input type="checkbox"/>
PULL OR ALTER CASING <input type="checkbox"/>	MULTIPLE COMPL <input type="checkbox"/>	CASING/CEMENT JOB <input type="checkbox"/>	
DOWNHOLE COMMINGLE <input type="checkbox"/>			
CLOSED-LOOP SYSTEM <input type="checkbox"/>	PLC-666-A <input checked="" type="checkbox"/>	OTHER: <input type="checkbox"/>	

13. Describe proposed or completed operations. (Clearly state all pertinent details, and give pertinent dates, including estimated date of starting any proposed work). SEE RULE 19.15.7.14 NMAC. For Multiple Completions: Attach wellbore diagram of proposed completion or recompletion.

Pursuant to Administrative Order PLC-666-A, Matador Production Company is adding this well as a well authorized to commingle production at the central tank battery located in Unit B of Section 15, Township 26S South, Range 31E East, Eddy County, New Mexico. All production from the subject well will be allocated using readings from individual well meters.

Spud Date:

Rig Release Date:

I hereby certify that the information above is true and complete to the best of my knowledge and belief.

SIGNATURE Brian Fancher TITLE Regulatory Consultant DATE 05/14/2021

Type or print name Brian Fancher E-mail address: bancher@matadorresources.com PHONE: 972-371-5242

**For State Use Only**

APPROVED BY: Dean R. McClure TITLE Petroleum Engineer DATE 06/08/2021

Conditions of Approval (if any):

District I  
1625 N. French Dr., Hobbs, NM 88240  
Phone: (575) 393-6161 Fax: (575) 393-0720  
District II  
811 S. First St., Artesia, NM 88210  
Phone: (575) 748-1283 Fax: (575) 748-9720  
District III  
1000 Rio Brazos Road, Aztec, NM 87410  
Phone: (505) 334-6178 Fax: (505) 334-6170  
District IV  
1220 S. St. Francis Dr., Santa Fe, NM 87505  
Phone: (505) 476-3460 Fax: (505) 476-3462

**RECEIVED**  
State of New Mexico  
Energy, Minerals & Natural Resources **MAR 04 2020**  
Department  
**OIL CONSERVATION DIVISION**  
1220 South St. Francis Dr.  
Santa Fe, NM 87505

FORM C-102

Revised August 1, 2011

Submit one copy to appropriate

District Office

☐ AMENDED REPORT

**WELL LOCATION AND ACREAGE DEDICATION PLAT**

<sup>1</sup> API Number <b>30-015-46925</b>		<sup>2</sup> Pool Code <b>97860</b>	<sup>3</sup> Pool Name <b>Jennings; Bone Spring, West</b>
<sup>4</sup> Property Code <b>326329</b>	<sup>5</sup> Property Name <b>BOROS FEDERAL</b>		<sup>6</sup> Well Number <b>114H</b>
<sup>7</sup> GRID No. <b>228937</b>	<sup>8</sup> Operator Name <b>MATADOR PRODUCTION COMPANY</b>		<sup>9</sup> Elevation <b>3217'</b>

**<sup>10</sup>Surface Location**

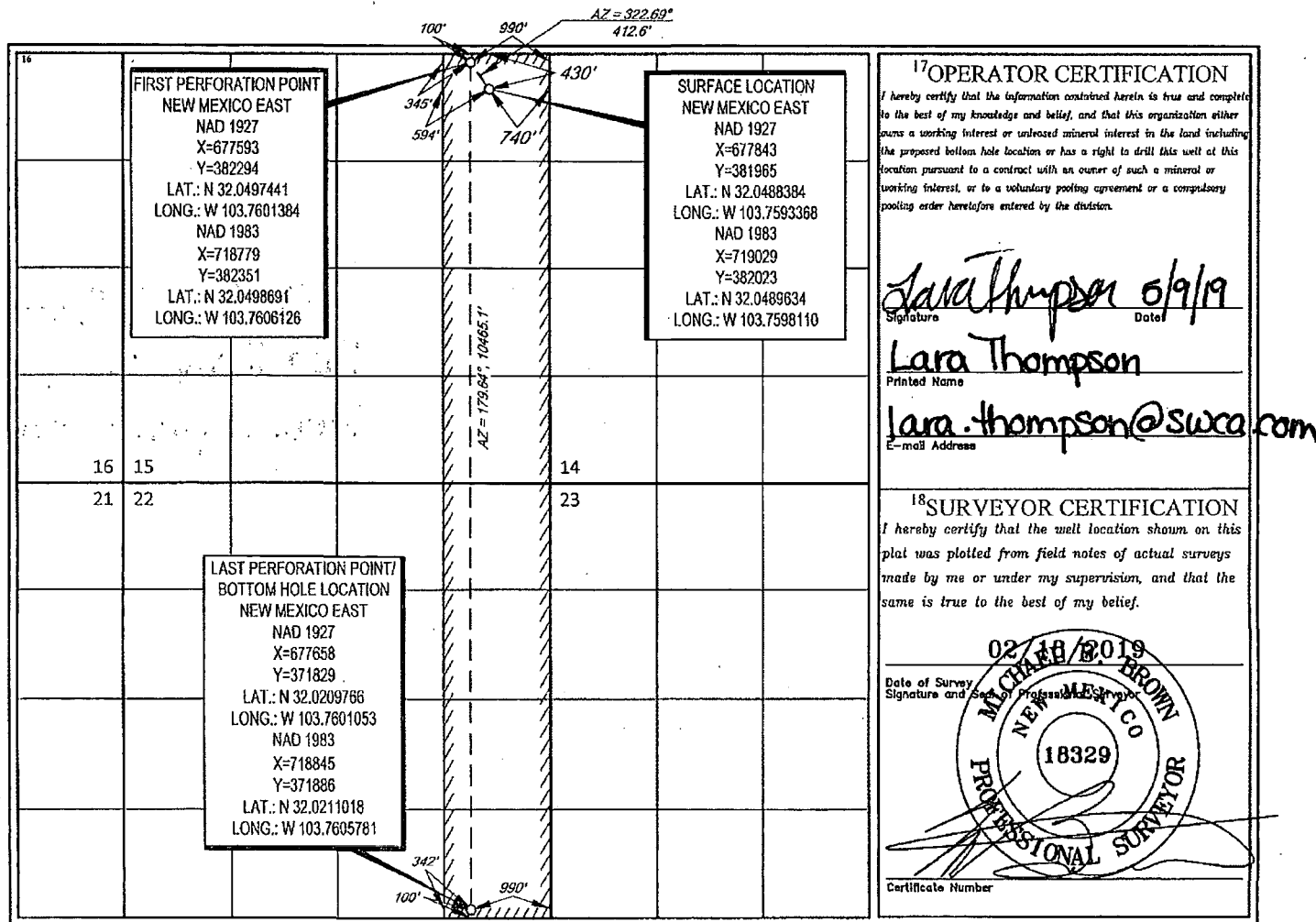
UL or lot no.	Section	Township	Range	Lot Idn	Feet from the	North/South line	Feet from the	East/West line	County
<b>A</b>	<b>15</b>	<b>26-S</b>	<b>31-E</b>	<b>-</b>	<b>430'</b>	<b>NORTH</b>	<b>740'</b>	<b>EAST</b>	<b>EDDY</b>

**<sup>11</sup>Bottom Hole Location If Different From Surface**

UL or lot no.	Section	Township	Range	Lot Idn	Feet from the	North/South line	Feet from the	East/West line	County
<b>P</b>	<b>22</b>	<b>26-S</b>	<b>31-E</b>	<b>-</b>	<b>100'</b>	<b>SOUTH</b>	<b>990'</b>	<b>EAST</b>	<b>EDDY</b>

<sup>12</sup> Dedicated Acres <b>320</b>	<sup>13</sup> Joint or Infill	<sup>14</sup> Consolidation Code	<sup>15</sup> Order No. <b>991</b>
---	-------------------------------	----------------------------------	---------------------------------------

No allowable will be assigned to this completion until all interests have been consolidated or a non-standard unit has been approved by the division.



*RWP 3-25-20*

District I  
1625 N. French Dr., Hobbs, NM 88240  
Phone: (575) 393-6161 Fax: (575) 393-0720  
District II  
811 S. First St., Artesia, NM 88210  
Phone: (575) 748-1283 Fax: (575) 748-9720  
District III  
1000 Rio Brazos Road, Aztec, NM 87410  
Phone: (505) 334-6178 Fax: (505) 334-6170  
District IV  
1220 S. St. Francis Dr., Santa Fe, NM 87505  
Phone: (505) 476-3460 Fax: (505) 476-3462

State of New Mexico  
Energy, Minerals & Natural Resources  
Department  
OIL CONSERVATION DIVISION  
1220 South St. Francis Dr.  
Santa Fe, NM 87505

FORM C-102  
Revised August 1, 2011  
Submit one copy to appropriate  
District Office  
☐ AMENDED REPORT

WELL LOCATION AND ACREAGE DEDICATION PLAT

<sup>1</sup> API Number		<sup>2</sup> Pool Code 97860	<sup>3</sup> Pool Name Jennings; Bone Spring, West
<sup>4</sup> Property Code	<sup>5</sup> Property Name BOROS FEDERAL		<sup>6</sup> Well Number 114H
<sup>7</sup> GRID No. 228937	<sup>8</sup> Operator Name MATADOR PRODUCTION COMPANY		<sup>9</sup> Elevation 3217'

<sup>10</sup>Surface Location

UL or lot no.	Section	Township	Range	Lot Ida	Feet from the	North/South line	Feet from the	East/West line	County
A	15	26-S	31-E	-	430'	NORTH	740'	EAST	EDDY

<sup>11</sup>Bottom Hole Location If Different From Surface

UL or lot no.	Section	Township	Range	Lot Ida	Feet from the	North/South line	Feet from the	East/West line	County
P	22	26-S	31-E	-	100'	SOUTH	990'	EAST	EDDY

<sup>12</sup> Dedicated Acres 320	<sup>13</sup> Joint or Infill	<sup>14</sup> Consolidation Code	<sup>15</sup> Order No.
--------------------------------------	-------------------------------	----------------------------------	-------------------------

No allowable will be assigned to this completion until all interests have been consolidated or a non-standard unit has been approved by the division.

