

State of New Mexico
Energy, Minerals and Natural Resources Department

Michelle Lujan Grisham
Governor

Sarah Cottrell Propst
Cabinet Secretary

Todd E. Leahy, JD, PhD
Deputy Secretary

Adrienne Sandoval, Division Director
Oil Conservation Division



BY ELECTRONIC MAIL ONLY

Sarah Chapman
Agent for Spur Energy Partners, LLC,
9655 Katy Freeway, Suite 500
Houston Texas 77024
schapman@spurenergy.com

Re: Administrative Order SWD-1179
Extension of Injection Authority
Maljamar 29 SWD Well No. 1, [30-025-39519]

Sarah Chapman:

The Oil Conservation Division (“OCD”) has reviewed your September 21, 2022, request to retain the injection authority of the referenced order in the referenced well. The request, which was received prior to the deadline, states the reasons for granting an extension, that the necessary repairs will be made to the well and that a successful MIT will be performed prior to recommencing injection. Accordingly, OCD reviews your request administratively.

On December 18, 2020, OCD adopted a new form of order granting injection authority for UIC wells to ensure the prevention of waste and the protection of correlative rights, public health, and the environment as required by the Oil and Gas Act and OCD’s delegation of authority from the U.S. Environmental Protection Agency. A copy of the new form of order is attached for your review. OCD will issue this form of order for any new applications to inject and requests to extend the deadline to commence injection under existing orders. Please advise whether you concur in the granting of injection authority using the new form of order as set forth below.


Adrienne Sandoval
Director

11/22/2022
Date: _____

**CONSENT TO ISSUANCE OF PERMIT USING NEW TEMPLATE
AND WAIVER OF RIGHT OF APPEAL**

Spur Energy Partners, LLC, having reviewed the new form of order for injection authority for UIC wells, consents to issuance of an order based thereon, and waives its right of appeal of such order or any condition in such order to any forum or tribunal. Spur Energy Partners, LLC, understands that OCD may determine that additional conditions are necessary and appropriate to prevent waste and protect correlative rights, public health, and the environment, and retains its right of appeal with respect to such additional conditions. Spur Energy Partners, LLC further warrants that the undersigned person is authorized to execute this Consent and Waiver on its behalf.

Sarah Chapman

Agent for Spur Energy Partners, LLC

11/4/2022 17:00

Move All Equipment To Location, Spot Spur Matting Board, MIRU PU, SICP @ 500# Bleed Down To Kill Truck, NDWH, NUBOP, RU Floor & Tongs, Secure Well & SDFW.

11/7/2022 17:00

AOL & PJSM, MI Unload 85 Jts. 2 7/8" J55 WS Tbg. & Tally, Pu 32-A Tension Pkr/ RIH W/ 61 Jts. 2 7/8" J55 Tbg., Set Pkr. @ 2001', L&T Tbg. To 500# Built To 650# In 10 Mins., RIH W/ 1 Jt Tbg. To 2033', L&T Tbg. To 500# Built To 650# In 10 Mins, L&T Csg. To 500#, No Gain Or Loss, RIH W/ 9 Jts. 2 7/8" J55 Tbg To 2327' Where We Had A Good Test Before, Set Pkr. @ 2327' L&T Tbg. To 500# Built To 650# In 10 Mins., L&T Tbg. To 500# Built To 605# In 10 Mins., L&T Csg. To 500#, No Build Up Or Loss, RIH W/ Last 14 Jts. We Have On Loc. Set Pkr @ 2784', L&T Tbg. To 500#, Built To 650# In 10 Mins., L&T Csg. To 500#, No Build Up Or Loss., Decision Made To POOH LD J55 WS, POOH LD 85 Jts. 2 7/8" J55 Tbg., LD Tension Pkr., Secure Well & SDFN

11/8/2022 17:00

AOL & PJSM, H2S Equip. In Place & Functional, MO 2 7/8" J55 WS, MI 2 7/8" L80 WS, Tally, PU RIH W/ 7" Kline Crest Pkr. W/ On/Off Tool For RBP, PU RIH W/ 216 Jts. 2 7/8" L80 WS, Set Pkr @ 6927' , L&T Tbg. To 500# Built To 650# In 10 Mins., L&T Csg. To 500# No Build Up & No Loss, Crew Taking Lunch, RIH W/ Jt #217 & 6' Sub, Wash Down Over RBP W/ 80 Bbls. TFW, Latch On RBP, Release Off RBP POOH W/ Tbg., LD Pkr & On/Off Tool, Secure Well & SDFN

11/9/2022 17:00

AOL & PJSM, H2S Equip In Place & Functional, Waiting On KLX Snubbing Unit MSA, Not Sure When Approval Will Come Thru, Secure Well & SDFN

11/10/2022 17:00

AOL & PJSM, H2S Equip. In Place & Functional, RD Rig Floor & Tongs, MIRU KLX Snubbing Unit, Tally Snubbing Unit & Found Out We Only Have A 1/2 A Foot To Spare, Decision Made To Order Extension Of 5', Extension AOL, Finally Get Everything Rigged Up, Send Derrick Hand Up To Get A Stand Out Of Derrick, Bells Too Long, Blocks At The Crown, Order Short Set Of Bells, Bells AOL, RIH W/ RBP Retrieving Tool, 1 Jt. 2 7/8" L80 WS Tbg., 2 7/8" Flow Check Valve, 96 Jt. 2 7/8" L80 WS Tbg., Secure Well & SDFN

11/11/2022 17:00

AOL & PJSM, H2S Equip. In Place & Functional, RIH W/ 123 Jts 2 7/8" L80 WS Tbg., Total Of 220 Jts., Catch RBP, Release RBP, 850# SICP, Snub OH W/ Tbg. & RBP, POOH W/ 219 Jts. 2 7/8" L80 WS & RBP, LD RBP, Crew Took Lunch, RIH W/ Retrieving Head, 1 Jts. 2 7/8" L80 WS, 2 7/8" Flow Check Valve, 10 Jts. 2 7/8" L80 WS Tbg., Bag Went To Leaking, Had To POOH W/ Tbg., To Change Out Bag, Change Out Bag On Snubbing Unit, Secure Well & SDFN

11/12/2022 17:00

AOL & PJSM, H2S Equipment In Place & Functional, RIH W/ Retrieving Tool 1 Jts 2 7/8" L80 WS, 2 7/8" Flow Check Valve, 22 Jts. 2 7/8" WS Tbg., 850# SICP, Every 4 Jts. Csg. Pressure Building To 2500#, Having To Bleed Well Down Every 4 Jts., Called & Ordered Gas Buster To Bleed Well Down To While RIH,

Standby Waiting On Gas Buster, Gas Buster AOL, Bleed Well Down To 0#, Small Trickle, RIH W/ Total Of 304 Jts. 2 7/8" L80 WS Tbg., Shut In Well Built To 850# In 15 Mins., Bleed Down RIH W/ 4 Jts. 2 7/8" L80 WS, Catch RBP@ 9776', Release RBP Had 850#, POOH W/ 36' 2 7/8" L80 Tbg., Set RBP @ 9740', Bleed Down Pressure Not Building So Far, Secure Well & SDFN, Will Check Pressures In AM

11/13/2022 17:00

AOL & PJSM, H2S EEquip. In Place & Functional, 0# SICP, Pressure Csg. To 500# For 30 Mins., GT No Loss Or Gain, Prepare To Release RBP, POOH LD WS, POOH LD 307 Jts. 2 7/8" L80 WS Tbg., LD RBP, Secure Well & SDFN

11/14/2022 17:00

AOL & PJSM, H2S EEquip. In Place & Functional, 850# SICP, Waiting On Pipe From Wester Falcon, They Messed Up On Order And Didn't Send Any Ultra Poly Core Tbg., Want Be On Location Till 3:30 PM, Sent Everyone Home For The Day, Secure Well & SDFN

11/15/2022 17:00

AOL & PJSM, H2S EEquip. In Place & Functional, 850# SICP, Raise Pipe Rack To Level To Pickup Tbg, MI 43 Jts 3 1/2" WF Enertube Tbg, & 3 1/2" WF Poly Core Tbg., RIH W/ 3 1/2" x 7" 1X AS Pkr. W/ T-2 On/Off Tool W/ 2.31F Profile, 43 Jts 3 1/2" WF Enertube 3 1/2" Tbg. 3 Jts. 3 1/2" WF Poly Core Tbg, MIRU Tbg. Testers, RIH W/ 120 Jts. 3 1/2" WF Poly Core Tbg. Testing To 5K Below Slips, Secure Well & SDFN

11/16/2022 17:00

AOL & PJSM, H2S EEquip. In Place & Functional, 850# SICP, MIRU Tbg. Testers, RIH W/ 184 Jts. 3 1/2" WF Poly Core Tbg. Testing To 5K Below Slips, Damaged 4 Jts. While RIH, 3 Jts. Short To Get On Depth With Packer, Have Tbg. Coming In AM, Will Pump Packer Fluid In AM & Set Packer, Secure Well & SDFN

11/17/2022 17:00

AOL & PJSM, H2S EEquip. In Place & Functional, 850# SICP, PU RIH W/ 1 Jt. 3 1/2" WF Poly Core Tbg., 6' x 3 1/2" WF Poly Core Tbg. Sub, 1 Jt 3 1/2" WF Poly Core Tbg., PU Another Jt. To Land Tbg, Pump 260 Bbls. TFW W/ Packer Chemical, SICP @ 2100#, Set Packer W/ 20K Compression, Bleed Well Down To 0#, No Leaks, L&T Csg To 500# GT, Bleed Down Close BOP Pipe Rams, LD Landing Jt. RDMO KLX Snubbing Unit, Crew Taking Lunch, NDBOP, NUWH, Perform Another Test With WH On To 500# For 30 Mins., GT, RDMO PU, Clean Location, Will Perform MIT In The Morning, Secure Well & SDFN.

11/18/2022

AOL & Waiting On OCD Rep, OCD Rep. AOL, MIRU TRM Kill Truck W/ Chart Recorder, Pressure Csg. To 575# For 32 Mins. End Pressure @ 570#, GT, OCD Rep. Put It Into The System As Passed, Load Tbg. W/ 30 Bbls. BW, 27 Bbls/ TFW, Pressure To 2200# To Pump Out POP, Pump 10 Bbls. TFW Into Formation, Turn Well Over To Prod. Construction To Build WH, Last Report.

SPUD DATE: 11/9/2009
ELEV: 3939' GL

Lea County, NM
API# 30-025-39519

CURRENT WBD

13-3/8" 48# H-40 CSG @ 897'

CMT W/ 800 SX
CIRC 200 SX TO SURF

DV TOOL @ 3,065'

9-5/8" 40#/36# J-55 CSG @ 4,230'

CMT W/ 2100 SX IN 2 STAGES,
CIRC TO SURF

DV TOOL @ 7,015'

TUBING DETAIL

12' KB
273 JTS 3-1/2" 9.3# J-55 MODIFIED POLYCORE
TUBING
43 JTS 3-1/2" 9.3# J-55 ENERTUBE TUBING
7" x 3-1/2" T-2 ON/OFF TOOL NICKEL-
PLATED W/ 2.31" F PROFILE
7" x 3-1/2" AS I-X NICKEL-PLATED PACKER
@ +/- 9,740'
3 1/2" WLREG AND PUMP-OUT PLUG

7" 26# L-80/N-80 CSG @ 10,482'

CMT W/ 1500 SX IN 2 STAGES
CIRC TO SURF

TD @ 10,482'
PBTD @ 10,435'

WOLFCAMP PERFS (9,840'-10,040')

12/15/2009: PERF 9,840'-9,920', 9,935'-10,040', 2 SPF
334 HOLES
12/16/2009: PERF 9,840'-9,920', 2 SPF 215 MORE HOLES
ACIDIZED W/ 11,000 GALS 15% ACID, ACID FRAC W/ 60,454
GALS ACID, 20,000# ROCK SALT PUMPED IN 3 STAGES

State of New Mexico
Energy, Minerals and Natural Resources Department
Oil Conservation Division Hobbs District Office

BRADENHEAD TEST REPORT

Operator Name SPUR		API Number 30-025-39519	
Property Name MALAMAR SWD 29		Well No. #1	

Surface Location

UL - Lot 0	Section 29	Township 17S	Range 32E	Feet from 490	NS Line S	Feet From 2160	E/W Line E	County LEA
----------------------	----------------------	------------------------	---------------------	-------------------------	---------------------	--------------------------	----------------------	----------------------

Well Status

TA'D WELL YES	NO	SHUT-IN YES	NO	INJ YES	INJECTOR SWD	PRODUCER OIL	GAS	DATE
------------------	----	----------------	----	------------	-----------------	-----------------	-----	------

OBSERVED DATA

	(A) Surface	(B) Interm (1)	(C) Interm (2)	(D) Prod Casing	(E) Tubing
Pressure	0			0	0
Flow Characteristics					
Puff	Y/N	Y/N	Y/N	Y/N	CO2
Steady Flow	Y/N	Y/N	Y/N	Y/N	WTR ✓
Surges	Y/N	Y/N	Y/N	Y/N	GAS
Down to nothing	Y/N	Y/N	Y/N	Y/N	Type of Fluid
Gas or Oil	Y/N	Y/N	Y/N	Y/N	Is used for
Water	Y/N	Y/N	Y/N	Y/N	Waterproof if
					applies

Remarks - Please state for each string (A,B,C,D,E) pertinent information regarding bleed down or continuous build up if applies.

PWD MIT/BHT

Signature:		OIL CONSERVATION DIVISION	
Printed name:		Entered into RBDMS	
Title:		Re-test	
E-mail Address:			
Date:	Phone:		
Witness:	Ray Kulusi		

INSTRUCTIONS ON BACK OF THIS FORM

[Handwritten signature]

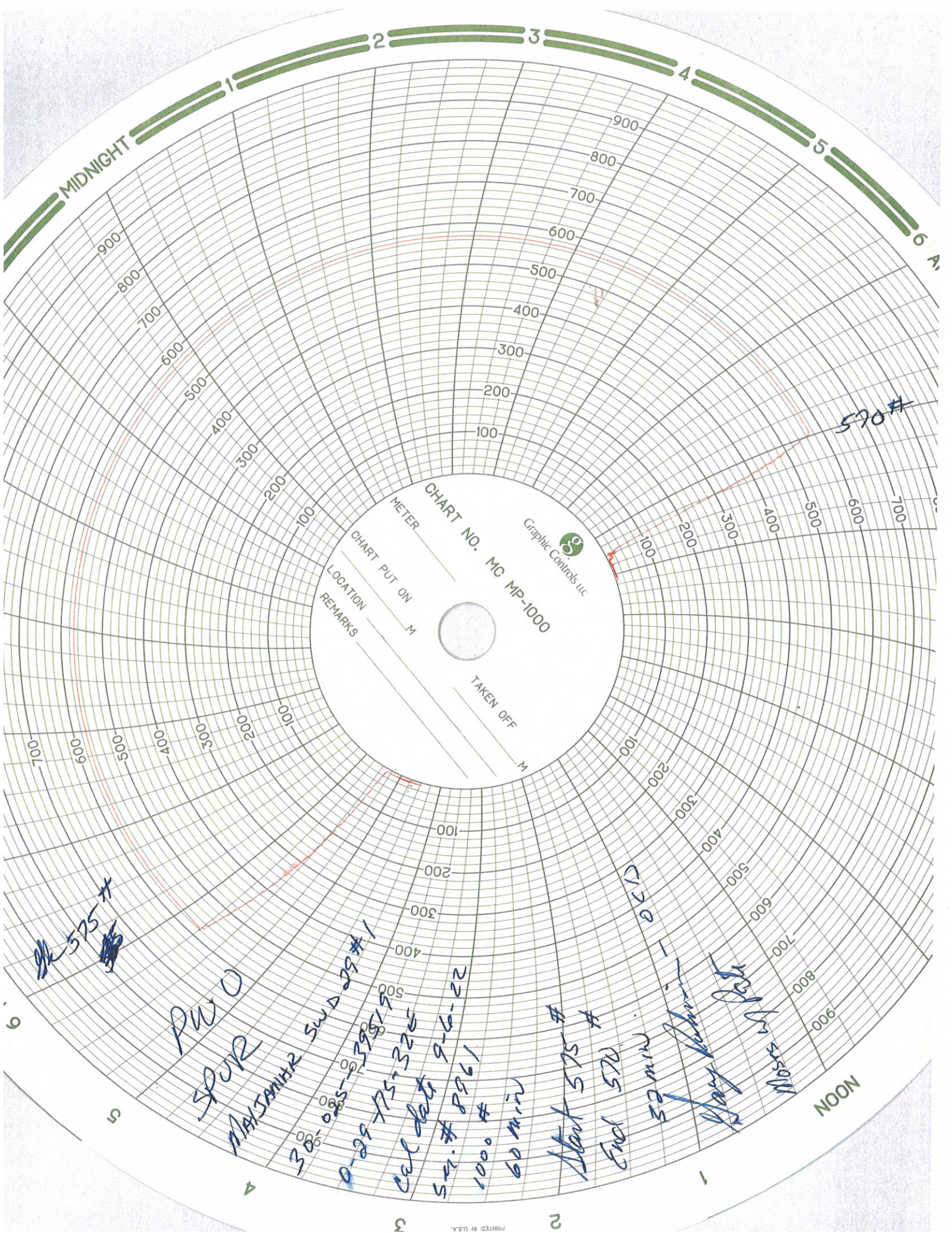


CHART NO. MC MP-1000
Graphic Controls LLC
METER
CHART PUT ON
LOCATION
REMARKS
TAKEN OFF

PW 0
SPJR

MAJANUAR SWD 29 #1

0-29 085-395150

cal data 9-6-22

ser # 8961

1000 #

60 min

Start 575 #

End 570 #

22 min

170 - 170

Start 575 #

End 570 #

22 min

170 - 170

NOON

MIDNIGHT