

LMPSU #031 Dry hole Marker



LMPSU #031

P4A



State of New Mexico Energy, Minerals and Natural Resources

OIL CONSERVATION DIVISION 1220 South St. Francis Dr. Santa Fe, NM 87505

WELL API NO. 30-025-10422
5. Indicate Type of Lease STATE [] FEE [x]
6. State Oil & Gas Lease No.
7. Lease Name or Unit Agreement Name Langlie Mattix Penrose Sand Unit
8. Well Number 31
9. OGRID Number 240974
10. Pool name or Wildcat Langlie Mattix; 7 Rvrs-Q-Grayburg
11. Elevation (Show whether DR, RKB, RT, GR, etc.) 3355' GR

SUNDRY NOTICES AND REPORTS ON WELLS (DO NOT USE THIS FORM FOR PROPOSALS TO DRILL OR TO DEEPEN OR PLUG BACK TO A DIFFERENT RESERVOIR. USE "APPLICATION FOR PERMIT" (FORM C-101) FOR SUCH PROPOSALS.)
1. Type of Well: Oil Well [x] Gas Well [] Other []
2. Name of Operator LEGACY RESERVES OPERATING LP
3. Address of Operator 15 SMITH ROAD, SUITE 3000, MIDLAND, TX 79705
4. Well Location Unit Letter H : 1980 feet from the NORTH line and 860 feet from the EAST line Section 22 Township 22S Range 37E NMPM County LEA

12. Check Appropriate Box to Indicate Nature of Notice, Report or Other Data

NOTICE OF INTENTION TO:

- PERFORM REMEDIAL WORK [] PLUG AND ABANDON [x]
TEMPORARILY ABANDON [] CHANGE PLANS []
PULL OR ALTER CASING [] MULTIPLE COMPL []
DOWNHOLE COMMINGLE []
CLOSED-LOOP SYSTEM []
OTHER: []

SUBSEQUENT REPORT OF:

- REMEDIAL WORK [] ALTERING CASING []
COMMENCE DRILLING OPNS. [] P AND A []
CASING/CEMENT JOB []
OTHER: []

13. Describe proposed or completed operations. (Clearly state all pertinent details, and give pertinent dates, including estimated date of starting any proposed work). SEE RULE 19.15.7.14 NMAC. For Multiple Completions: Attach wellbore diagram of proposed completion or recompletion.

- 1. MIRU. Pull Injection string and AD-1 packer from 3195'.
2. PUMU 6.625" AW scraper. RIH to 3320'.
3. PUMU 6.625" CIBP. RIH and set @ 3300'.
4. MIRU cementers. RIH with tubing, tag CIBP, spot 25 sx. WOC & Tag- record depth.
5. Circ hole with MLF and P/T casing to 500 # witnessed by NMOCD rep.
6. Spot 25 sx cmt @2658'-2558'. (yates)
7. Spot 71 sx cmt @ 2488-2098'. WOC & Tag (Transil (B-salt)/ Est TOC in 6.625")
8. Perf & Sqz 59 sx cmt @ 1273'-1070'. WOC & Tag (Rustler T-salt/ Int. Casing Shoe/ Sqz holes)
9. Perf & Sqz 30 sx cmt @ 300'-200'. WOC & Tag. (Surf Csg Shoe)
10. Spot 25 sx cmt @ 100'. (Surface Plug)
11. Cut off well head, verify cmt at surface, weld on dry hole marker

4" diameter 4' tall Above Ground Marker

Spud Date:

[Empty box for Spud Date]

Rig Release Date:

SEE ATTACHED CONDITIONS OF APPROVAL

I hereby certify that the information above is true and complete to the best of my knowledge and belief.

SIGNATURE Melanie Reyes TITLE Regulatory Tech DATE 01/18/2023

Type or print name MELANIE REYES E-mail address: mreyes@legacyreserves.com PHONE: 432-221-6358

For State Use Only

APPROVED BY: Kerry Fortner TITLE Compliance Officer A DATE 2/15/23
Conditions of Approval (if any): 575-263-6633

**CONDITIONS OF APPROVAL
FOR PLUGGING AND ABANDONMENT
OCD - Southern District**

The following is a guide or checklist in preparation of a plugging program, this is not all inclusive and care must be exercised in establishing special plugging programs in unique and unusual cases, Notify NMOCD District Office I (Hobbs) at (575)-263-6633 at least 24 hours before beginning work. After MIRU rig will remain on well until it is plugged to surface. OCD is to be notified before rig down.

Company representative will be on location during plugging procedures.

1. A notice of intent to plug and abandon a wellbore is required to be approved before plugging operations are conducted. A cement evaluation tool is required in order to ensure isolation of producing formations, protection of water and correlative rights. A cement bond log or other accepted cement evaluation tool is to be provided to the division for evaluation if one has not been previously run or if the well did not have cement circulated to surface during the original casing cementing job or subsequent cementing jobs. Insure all bradenheads have been exposed, identified and valves are operational prior to rig up.
2. Closed loop system is to be used for entire plugging operation. Upon completion, contents of steel pits are to be hauled to a permitted disposal location.
3. Trucking companies being used to haul oilfield waste fluids to a disposal - commercial or private- shall have an approved NMOCD C-133 permit. A copy of this permit shall be available in each truck used to haul waste products. It is the responsibility of the operator as well as the contractor, to verify that this permit is in place prior to performing work. Drivers shall be able to produce a copy upon request of an NMOCD Field inspector.
4. Filing a subsequent C-103 will serve as notification that the well has been plugged.
5. A final C-103 shall be filed (and a site inspection by NMOCD Inspector to determine if the location is satisfactorily cleaned, all equipment, electric poles and trash has been removed to Meet NMOCD standards) before bonding can +be released.
6. If work has not begun within 1 Year of the approval of this procedure, an extension request must be file stating the reason the well has not been plugged.
7. Squeeze pressures are not to exceed 500 psi, unless approval is given by NMOCD.
8. Produced water will not be used during any part of the plugging operation.
9. Mud laden fluids must be placed between all cement plugs mixed at 25 sacks per 100 bbls of water.
10. All cement plugs will be a minimum of 100' in length or a minimum of 25 sacks of cement, whichever is greater. 50' of calculated cement excess required for inside casing plugs and 100% calculated cement excess required on outside casing plugs.
11. Class 'C' cement will be used above 7500 feet.
12. Class 'H' cement will be used below 7500 feet.
13. A cement plug is required to be set 50' above and 50' below, casing stubs, DV tools, attempted casing cut offs, cement tops outside casing, salt sections and anywhere the casing is perforated, these plugs require a 4 hour WOC and then will be tagged
14. All Casing Shoes Will Be Perforated 50' below shoe depth and Attempted to be Squeezed, cement needs to be 50' above and 50' Below Casing Shoe inside the Production Casing.
16. When setting the top out cement plug in production, intermediate and surface casing, wellbores should remain full at least 30 minutes after plugs are set
17. A CIBP is to be set within 100' of production perforations, capped with 100' of cement, WOC 4 hours and tag.
18. A CIBP with 35' of cement may be used in lieu of the 100' plug if set with a bailer. This plug will be placed within 100' of the top perforation, (WOC 4 hrs and tag).

19. No more than 3000' is allowed between cement plugs in cased hole and 2000' in open hole.

20. Some of the Formations to be isolated with cement plugs are: These plugs to be set to isolate formation tops

A) Fusselman

B) Devonian

C) Morrow

D) Wolfcamp

E) Bone Springs

F) Delaware

G) Any salt sections

H) Abo

I) Glorieta

J) Yates.

K) Potash---(In the R-111-P Area (Potash Mine Area),

A solid cement plug must be set across the salt section. Fluid used to mix the cement shall be saturated with the salts that are common to the section penetrated and in suitable proportions, not more than 3% calcium chloride (by weight of cement) will be considered the desired mixture whenever possible, WOC 4 hours and tag, this plug will be 50' below the bottom and 50' above the top of the Formation.

21. If cement does not exist behind casing strings at recommended formation depths, the casing can be cut and pulled with plugs set at recommended depths. If casing is not pulled, perforations will be shot and cement squeezed behind casing, WOC and tagged. These plugs will be set 50' below formation bottom to 50' above formation top inside the casing.

DRY HOLE MARKER REQUIREMENTS

The operator shall mark the exact location of the plugged and abandoned well with a steel marker not less than four inches in diameter, 3' below ground level with a plate of at least ¼" welded to the top of the casing and the dry hole marker welded on the plate with the following information welded on the dry hole marker:

1. Operator name
2. Lease and Well Number
3. API Number
4. Unit letter
5. Quarter Section (feet from the North, South, East or West)
6. Section, Township and Range
7. Plugging Date
8. County

SPECIAL CASES -----AGRICULTURE OR PRARIE CHICKEN BREEDING AREAS

In these areas, a below ground marker is required with all pertinent information mentioned above on a plate, set 3' below ground level, a picture of the plate will be supplied to NMOCD for record, the exact location of the marker (longitude and latitude by GPS) will be provided to NMOCD (We typically require a current survey to verify the GPS)

SITE REMEDIATION DUE WITHIN ONE YEAR OF WELL PLUGGING COMPLETION

Wellbore Schematic

Printed: 11/30/2022

Page 1

LMPSU # 31

BOLO ID: 300029.03.01

API # 3002510422

LMPSU#31, 11/30/2022

1980 FNL & 860 FEL	GL Elev. 3,355.00	KOP:	
Section 22, Township 22S, Range 37E		EOC:	
County, State: Lea, NM		Fill Depth:	
Aux ID: 41900		PBTD:	3,685.00
'KB' correction: ; All Depths Corr To:		TD:	3,654.00
		BOP:	

Hole Size

Diameter	Top At	Btm At	Date Drilled
15.0000	0.00	250.00	
<i>Bore size estimated.</i>			
10.7500	250.00	1,048.00	
<i>Bore size estimated.</i>			
7.8750	1,048.00	3,380.00	
<i>Bore size estimated.</i>			
6.0000	3,380.00	3,685.00	
<i>Open Hole.</i>			

Surface Casing

Date Ran: 10/24/2008

Description	#	Diameter	Weight	Grade	Length	Top At	Btm At
Casing	1	12.5000	50.00		250.00	0.00	250.00

Intermediate Casing

Date Ran: 10/24/2008

Description	#	Diameter	Weight	Grade	Length	Top At	Btm At
Casing	1	8.2500	32.00		1,048.00	0.00	1,048.00

Production Casing

Date Ran: 10/24/2008

Description	#	Diameter	Weight	Grade	Length	Top At	Btm At
Casing	1	7.0000	20.00		3,380.00	0.00	3,380.00

7" by log and conservative estimate. 6.625" 24# by well file.

Cement

Top At	Btm At	ID	OD	TOC Per	# - Type	#Sx	Class	Wt.
	250.00	12.500	15.000		10	90		
TOC Unknown.; TOC Unknown.								
	1,048.00	8.250	10.750		20	150		
TOC Unknown.; TOC Unknown.								
0.00	1,190.00	6.625	7.875	Circ	30	160		
	3,380.00	6.625	7.875		40	250		
TOC Unknown.; TOC Unknown.								

Zone and Perfs

SEVEN RIVERS

Comments / Completion Summary

3/3/1937: Acidize open hole. well record comments that this had no effect.
 3/10/1937: Shot OH with Nitro.
 11/22/1955: Frac treatment (sand-oil) on OH.

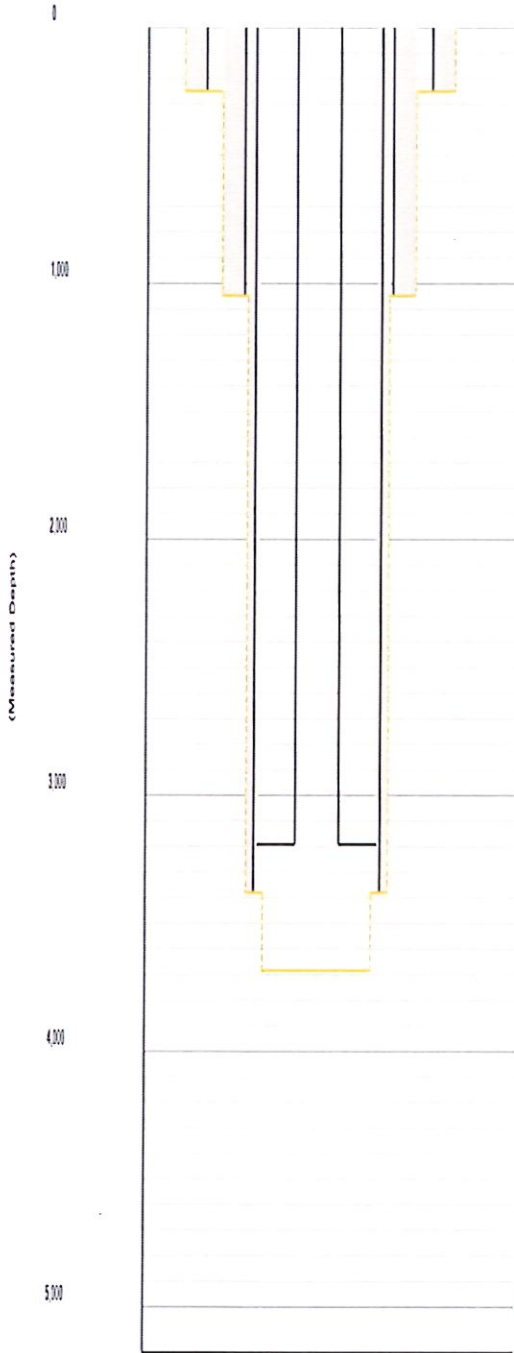
Perforations

Top	Bottom	Formation	Status	Opened	Closed	#/ Ft	Ttl #
3,380.00	3,845.00	Penrose Sand					

Tubing

Date Ran: 10/7/2008

Description	#	Diameter	Weight	Grade	Length	Top At	Btm At
Tubing	97	2.3750			3,191.00	0.00	3,191.00
Packer	1	6.6250			4.00	3,191.00	3,195.00



County:	Lea	Township:	22S	Range:	37E
State:	New Mexico	Location:	1980' FNL x 860' FWL		
Spud Date:	8/11/1936	GL:	3355'	PBTD:	3680'

Description	O.D.	Weight	Top	Depth	Hole	Cmt Sx
Surface	12.5	50	0	250	15	90 sx
Intermediate	8.625	32	0	1120	9.875	200 sx
Production	6.625	24	0	3380	8.125	250 sx
Open Hole	6"				6"	OH

- 9. Cut off well head, verify cmt at surface, weld on dry hole marker.
- 8. Spot 25 sx cmt @ 100'. (Surface Plug)
- 12.5" Surface Casing @ 250'
- 7. Perf & Sqz 30 sx cmt @ 300'-200'. WOC & Tag. (Surf Csg Shoe)

Top job in 2008- 30 sx pumped through 1" string in 8.625" x 12.25" annulus. Fill to surface

Formatic
Rustler (T-Salt)
Transil (B-Salt)
Yate
7River
Quee

* Used offset wt

8.625" Intermediate Casing @ 1120'

6.625" csg squeezed with 160 sx to surface @ 1190' in Oct 2008

- 6. Perf & Sqz 59 sx cmt @ 1273'-1070'. WOC & Tag (Rustler T-salt/ Int. Casing Shoe/ Sqz holes)

Cement bridges seen in log @ 1510'

Cement bridges seen in log @ 1694'

Est TOC 2148' (log)

- 5. Spot 71 sx cmt @ 2488-2098'. WOC & Tag (Transil (B-salt)/ Est TOC in 6.625")

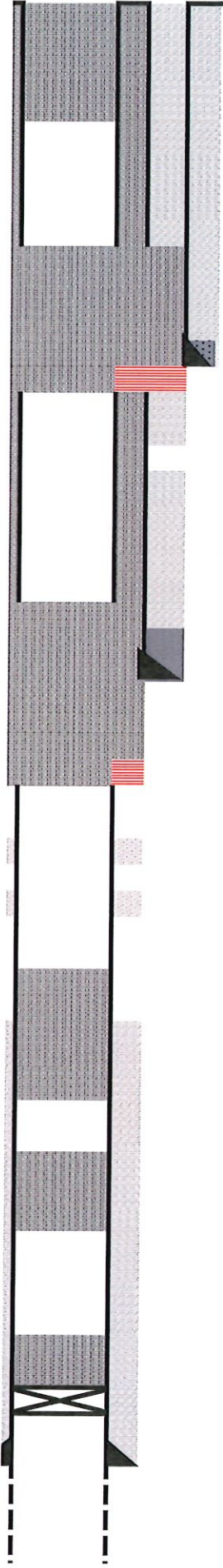
- 4. Spot 25 sx cmt @2658'-2558'. (Yates)

- 3. Circ hole with MLF and P/T casing to 500 # witnessed by NMOCD rep.

- 2. MIRU cementers. RIH with tubing, tag CIBP, spot 25 sx. WOC & Tag- record depth.

- 1. PUMU 6.625" CIBP. RIH and set @ 3300'.

6.625" Production Casing @ 3380'



District I
 1625 N. French Dr., Hobbs, NM 88240
 Phone:(575) 393-6161 Fax:(575) 393-0720

District II
 811 S. First St., Artesia, NM 88210
 Phone:(575) 748-1283 Fax:(575) 748-9720

District III
 1000 Rio Brazos Rd., Aztec, NM 87410
 Phone:(505) 334-6178 Fax:(505) 334-6170

District IV
 1220 S. St Francis Dr., Santa Fe, NM 87505
 Phone:(505) 476-3470 Fax:(505) 476-3462

State of New Mexico
Energy, Minerals and Natural Resources
Oil Conservation Division
1220 S. St Francis Dr.
Santa Fe, NM 87505

COMMENTS

Action 177559

COMMENTS

Operator: LEGACY RESERVES OPERATING, LP 15 Smith Road Midland, TX 79705	OGRID: 240974
	Action Number: 177559
	Action Type: [C-103] NOI Plug & Abandon (C-103F)

COMMENTS

Created By	Comment	Comment Date
plmartinez	DATA ENTRY PM	2/16/2023

District I
 1625 N. French Dr., Hobbs, NM 88240
 Phone:(575) 393-6161 Fax:(575) 393-0720

District II
 811 S. First St., Artesia, NM 88210
 Phone:(575) 748-1283 Fax:(575) 748-9720

District III
 1000 Rio Brazos Rd., Aztec, NM 87410
 Phone:(505) 334-6178 Fax:(505) 334-6170

District IV
 1220 S. St Francis Dr., Santa Fe, NM 87505
 Phone:(505) 476-3470 Fax:(505) 476-3462

State of New Mexico
Energy, Minerals and Natural Resources
Oil Conservation Division
1220 S. St Francis Dr.
Santa Fe, NM 87505

CONDITIONS

Action 177559

CONDITIONS

Operator: LEGACY RESERVES OPERATING, LP 15 Smith Road Midland, TX 79705	OGRID: 240974
	Action Number: 177559
	Action Type: [C-103] NOI Plug & Abandon (C-103F)

CONDITIONS

Created By	Condition	Condition Date
kfortner	See attached COA	2/15/2023