

GW-020

**Annual Piping
inspection**

**Date:
June 8, 2010**

David Feather
Environmental Tech III

RECEIVED OCD

2010 JUN 11 P 12

Phone (575) 677-5140
Cell (575) 706-5287
dfeather@akaenergy.com

June 8, 2010

CERTIFIED Mail #7006 0100 0004 2382 0829
RETRURN RECEIPT REQUESTED

State of New Mexico
Energy Mineral and Natural Resources
Oil Conservation Division
1220 South St. Francis Dr.
Santa Fe, NM 87505

**RE: GW-020 Discharge Plan
Maljamar Gas Plant
Annual Sump and Five Year Underground Piping Inspection
Frontier Field Services**

Dear Mr. Price:

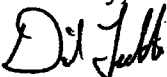
On May 24, 2010 notice was given to E.C. Gonzales with the local NMOCDD office in Hobbs, NM that a planned inspection of sumps and underground piping as required in our Discharge Plan would be performed beginning May 26, 2010

During the time period from May 26 through June 4, 2010 the plant sumps and underground piping was inspected. Copies of the inspection records are attached. A copy of this letter is also appended to the GW-020 renewal application.

For the underground piping inspection a circular chart was used to record each inspection. The recorder was calibrated by a Frontier Field Services employee skilled in meter calibration. The chart range is from 0% to 100%, calibrated to 100 psig at 100%. The piping inspections were performed at approximately 35-40 psig held for at least 4 hours.

If you have any questions or require more information please contact me at 575-677-5140.

Sincerely,



David Feather

E.C. Gonzales, OCD-Hobbs
File: Env 1054

Frontier Field Services
2010 Sump Report
5/26/2010

Refridge sump Pressure wash sump pull liquids and clean sump.
 Fill with fresh water .
 12:00pm level at 6' 4''
 2:30pm level at 6' 4''
 3:30pm Level at 6' 4''
Let sit 24 hours Level at 6' 4'' at 1:30 pm .

Expander sump # 1 Pressure wash sump, Pull liquids and clean sump .
 Fill with fresh water .
 1:30pm Level at 3' 1''
 2:45pm level at 3' 1''
 3:40pm level at 3' 1''

Let sit 24 hours level at 3' 1''

Expander sump # 2 Pressure wash sump pull liquids and clean sump
 Fill with fresh water.
 1:45pm level at 3' 3''
 2:55pm Level at 3' 3''
 3:50pm level at 3' 3''

Let sit 24 hours level at 3' 3''

Amine sump Pressure wash Amine sump , pull liquids and clean .
 Fill with fresh water.
 1:00pm level at 3' 7''
 2:30pm level at 3' 7''
 3:35pm level at 3' 7''

Let sit 24 hours level at 3' 7''

Electric building sump Pressure wash sump, pull liquids and clean sump
fill with fresh water

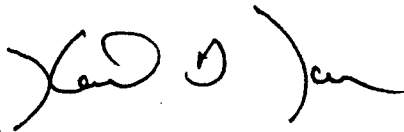
2:00pm level at 8'5.5"

3:05pm level at 8'5.5"

4:00pm level at 8'5.5"

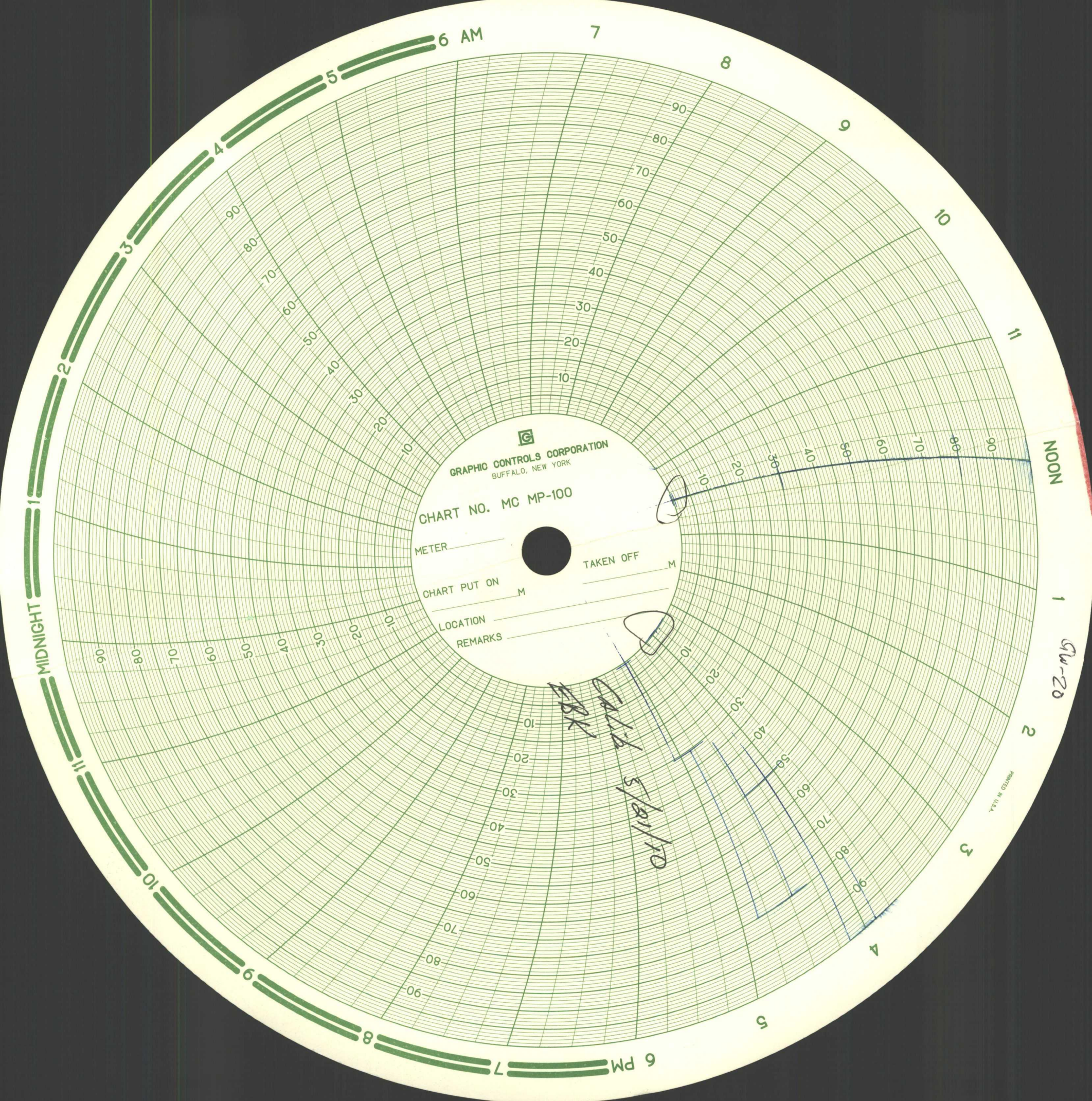
Let sit for 24 hours level at 8'5.5"

Kenneth Tanner

A handwritten signature in black ink, appearing to read 'Ken D. Tanner', written over the printed name.

Lance Lambert

A handwritten signature in black ink, appearing to read 'Lance Lambert', written over the printed name.



GRAPHIC CONTROLS CORPORATION
BUFFALO, NEW YORK

CHART NO. MC MP-100

METER

TAKEN OFF

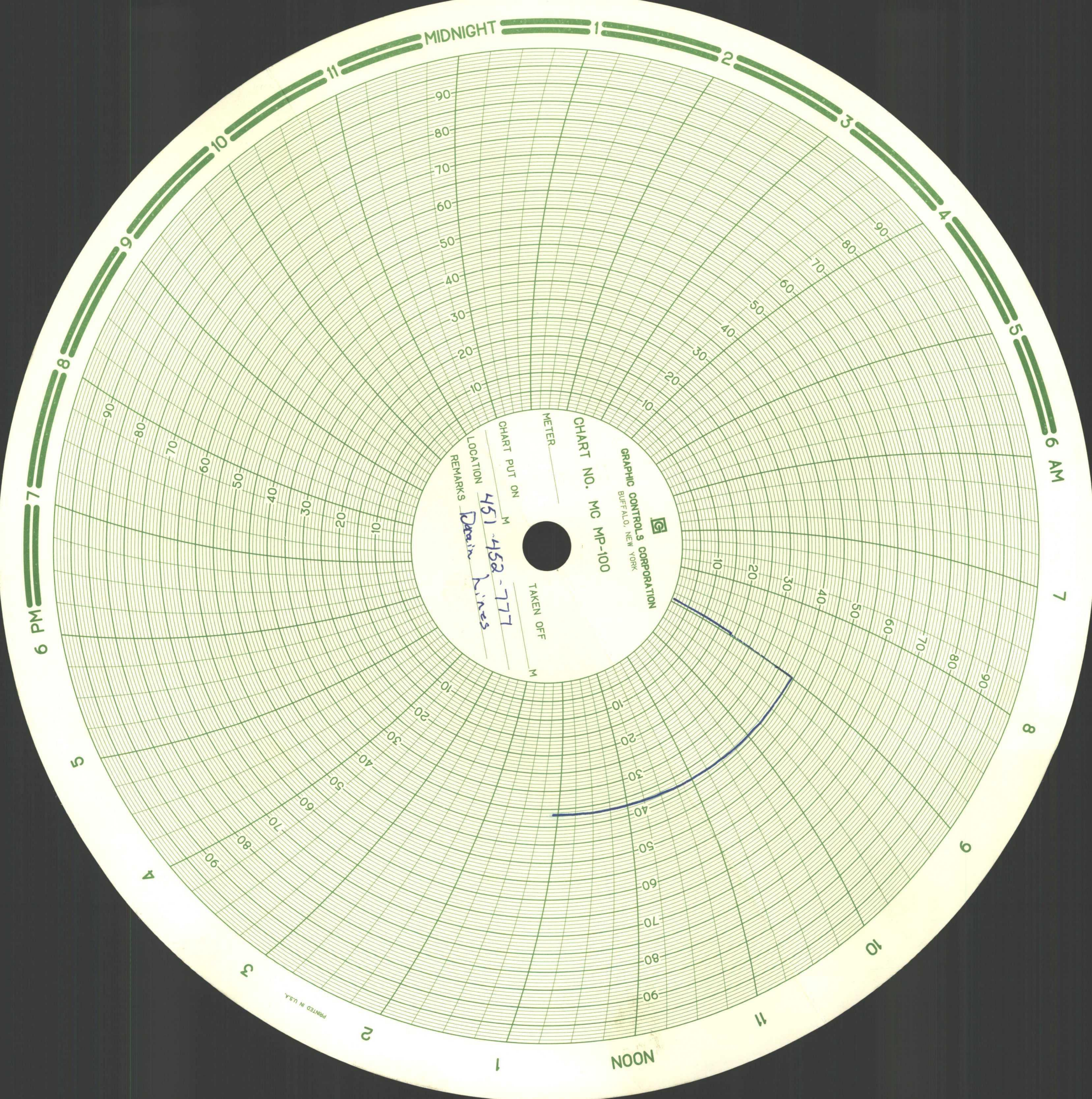
CHART PUT ON

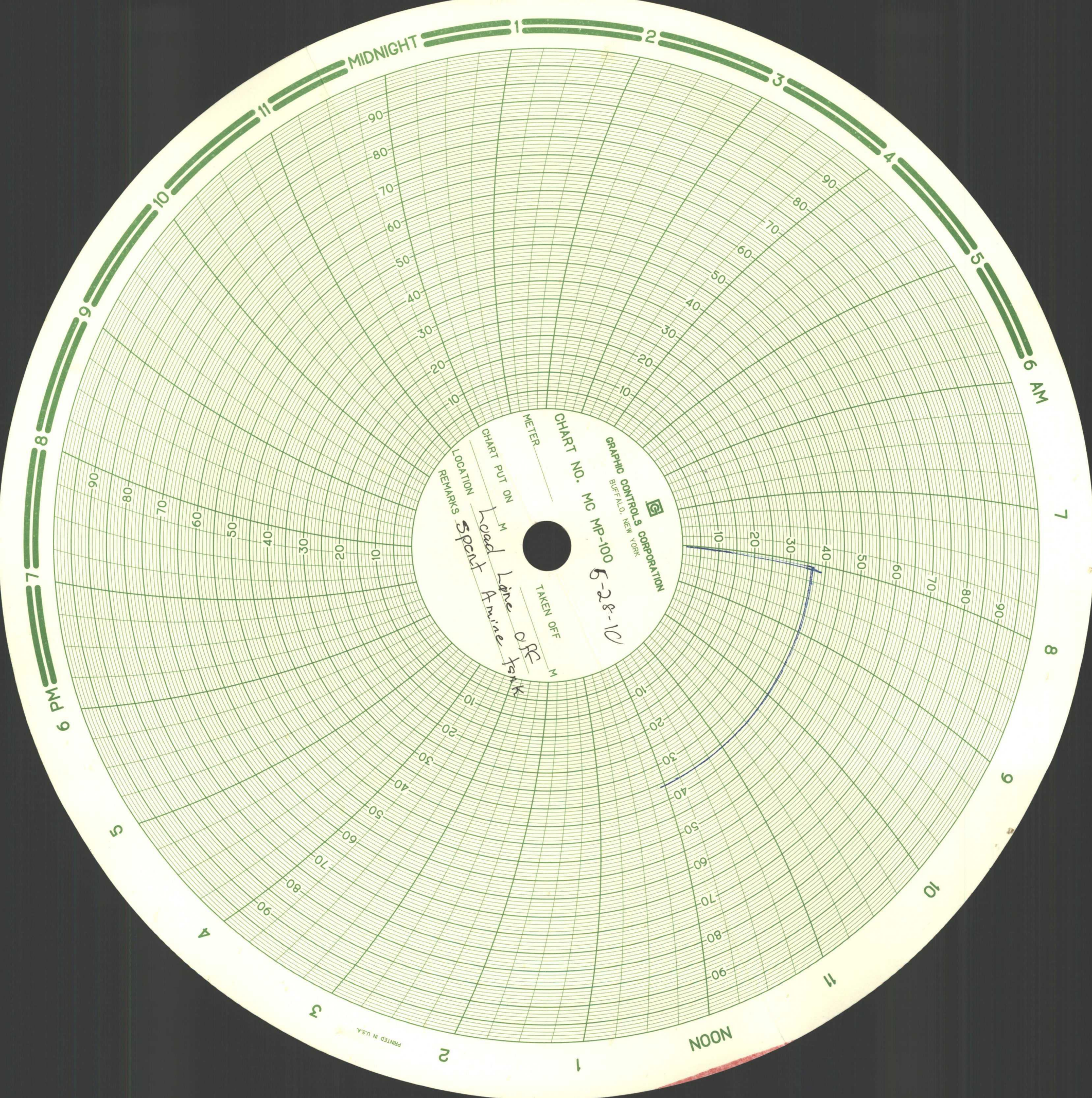
LOCATION

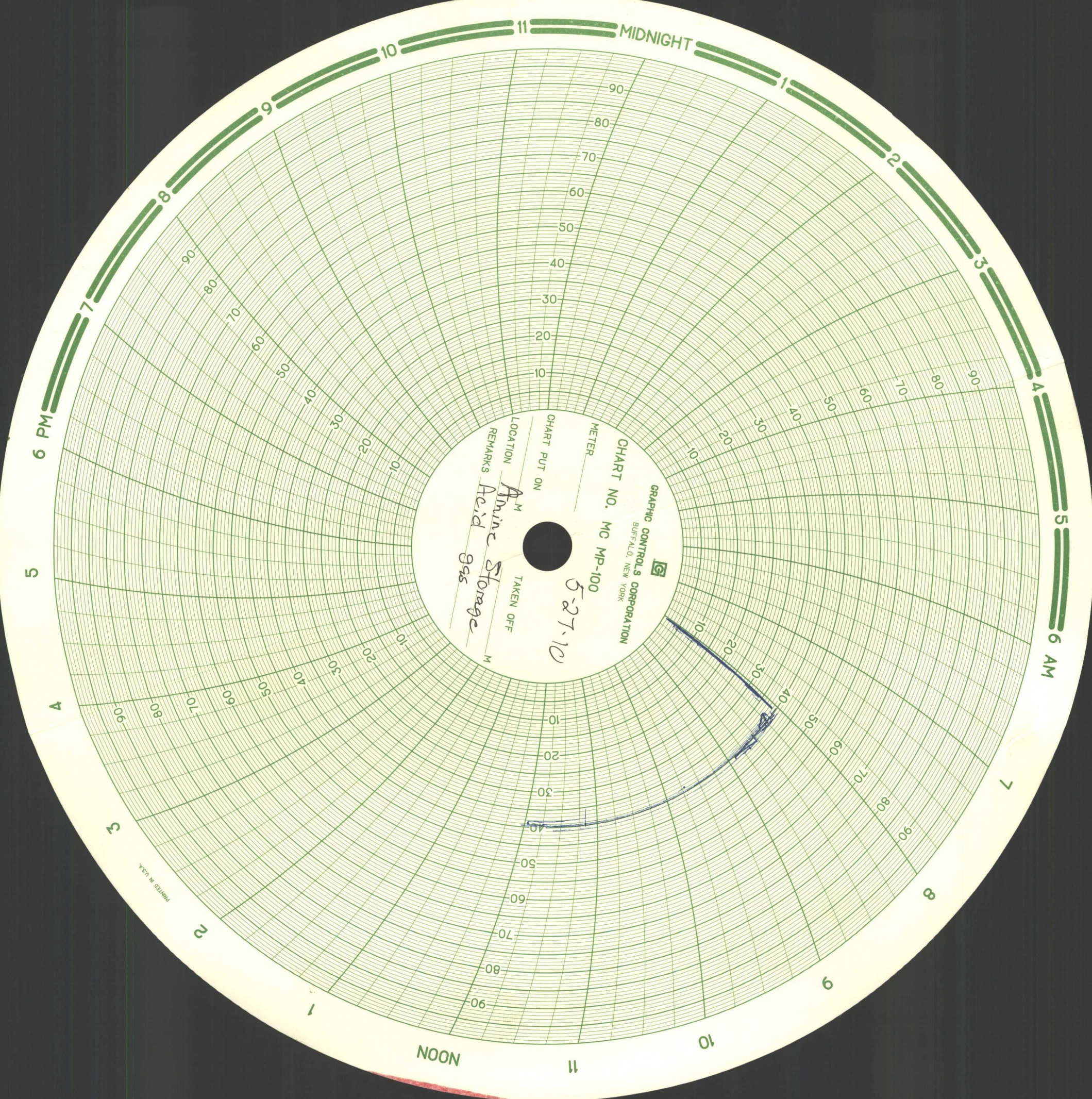
REMARKS

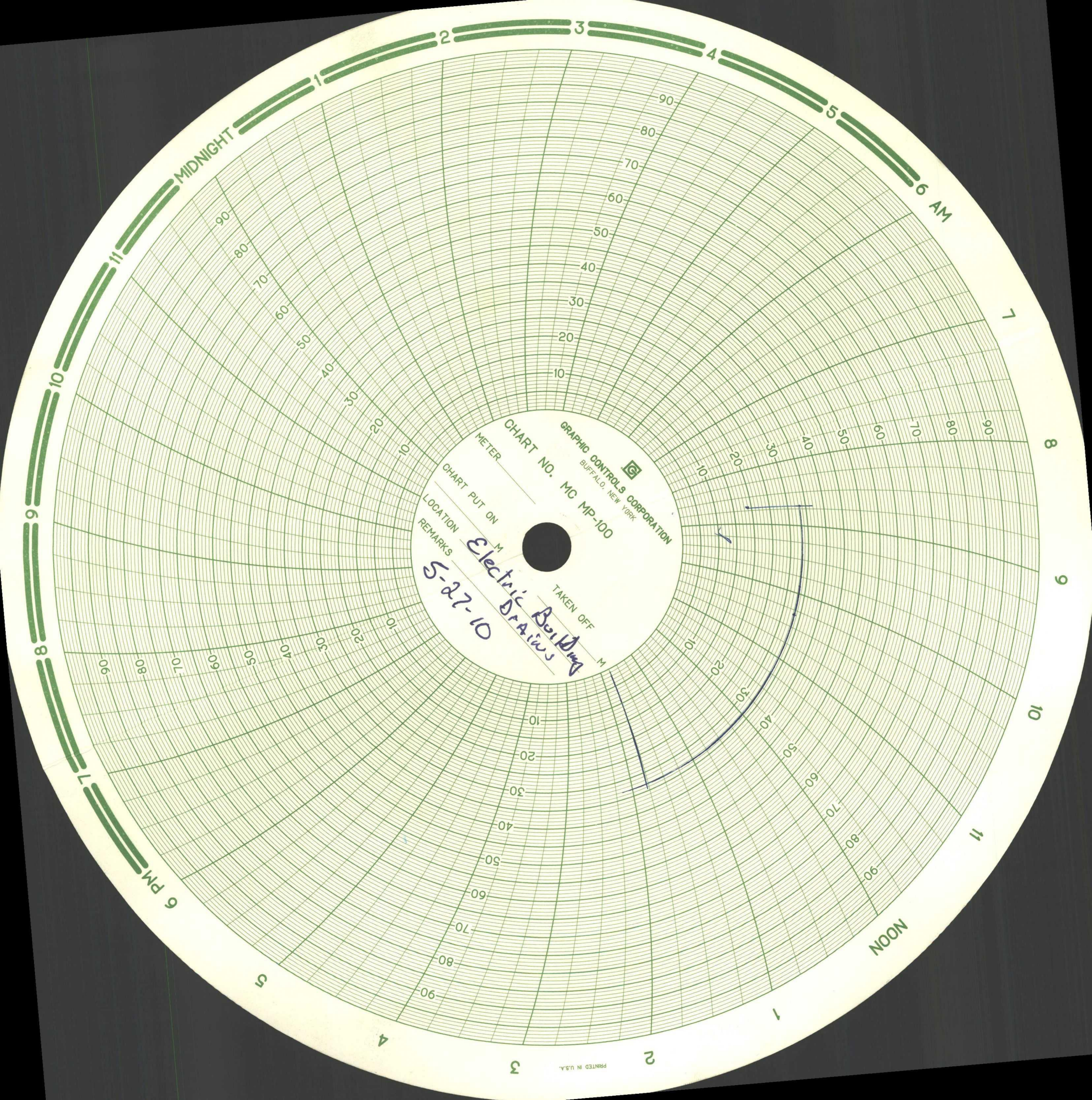
CALC
5/21/70

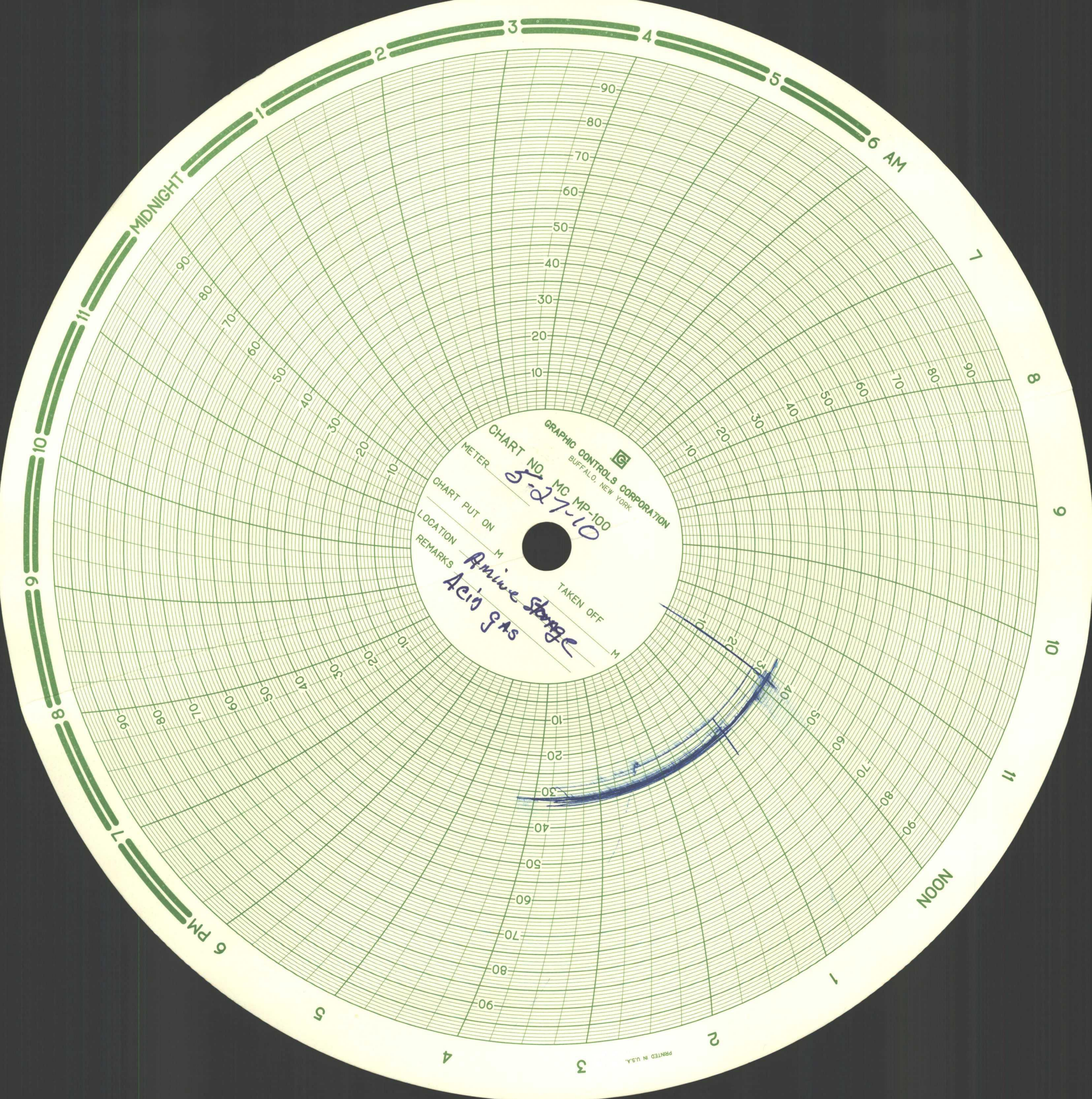
PRINTED IN U.S.A.

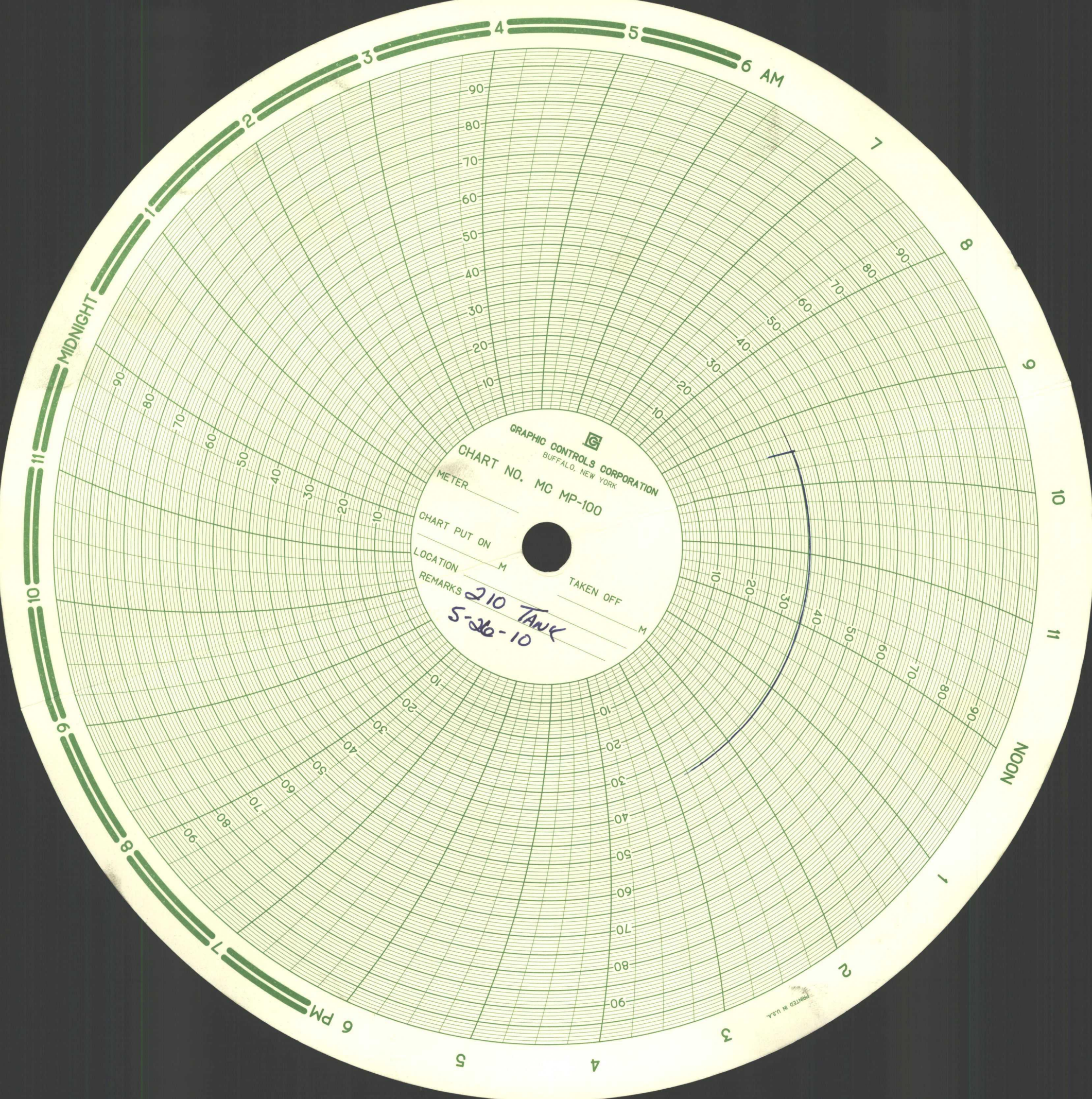












GRAPHIC CONTROLS CORPORATION
BUFFALO, NEW YORK

CHART NO. MC MP-100

METER

CHART PUT ON

LOCATION

REMARKS

TAKEN OFF

210 TANK
5-26-10

PRINTED IN U.S.A.