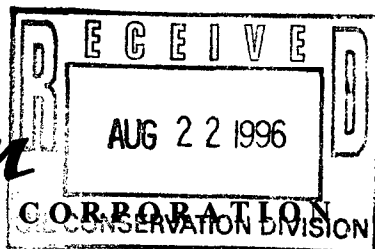


NSL

9/11/96

devon
ENERGY CORPORATION20 North Broadway, Suite 1500
Oklahoma City, Oklahoma 73102-8260Telephone 405/235-3611
FAX 405/552-4550

August 15, 1996

Certified Mail No. Z 731 697 811

State of New Mexico
Energy, Minerals and Natural Resources Department
Oil Conservation Division
2040 South Pacheco
Santa Fe, New Mexico 87505RE: Non-Standard Location Approval
Eagle "33P" Federal #13
Eddy County, New Mexico

Gentlemen:

Devon Energy Corporation (Nevada) requests "Non-Standard Location" approval for the referenced well located as listed below. This unorthodox location is necessary due to pipeline and topography problems (see attached topography map).

<u>Well Name & No.</u>	<u>Unit Ltr</u>	<u>Section-T-R</u>	<u>Footage Location</u>
Eagle "33P" Federal #13	P	33-17S-27E	1140' FSL & 1090' FEL

Enclosed is a map of the West Red Lake Area showing the well's location and a copy of form C-102.

Operators having wells and/or lease holdings in the offsetting 40 acre tracts will be notified by certified mail. Copies of our letters of notification to the following operators are enclosed.

Amoco Production Company	Houston, Texas
Exxon Company, USA	Midland, Texas

Eagle "33P" Federal #13
NSL Approval
8/15/96
Page Two

State of New Mexico
Energy, Minerals and Natural Resources Dept.
Oil Conservation Division

If you have any questions, please contact the undersigned at (405) 235-3611, X4509.

Sincerely yours,

DEVON ENERGY CORPORATION (NEVADA)

A handwritten signature in black ink, reading "E. L. Buttross Jr." with a stylized flourish at the end.

Mr. E.L. Buttross, Jr.
District Engineer

ELB\re
Enclosures

cc: Oil Conservation Division - Artesia, NM
Bureau of Land Management - Carlsbad, NM

DISTRICT I
P.O. Box 1980, Hobbs, NM 88240

State of New Mexico
Energy, Minerals and Natural Resources Department

Form C-102
Revised February 10, 1994
Instruction on back
Submit to Appropriate District Office
State Lease - 4 Copies
Fee Lease - 3 Copies

DISTRICT II
P.O. Drawer DD, Artesia, NM 88210

OIL CONSERVATION DIVISION

DISTRICT III
1000 Rio Brazos Rd., Aztec, NM 87410

P.O. Box 2088
Santa Fe, New Mexico 87504-2088

☐ AMENDED REPORT

WELL LOCATION AND ACREAGE DEDICATION PLAT

API Number	Pool Code 51300	Pool Name Red Lake (Q-GB-SA)
Property Code	Property Name Eagle 33 "P" Federal	Well Number 13
OGRID No. 6137	Operator Name Devon Energy Corporation (Nevada)	Elevation 3512'

Surface Location

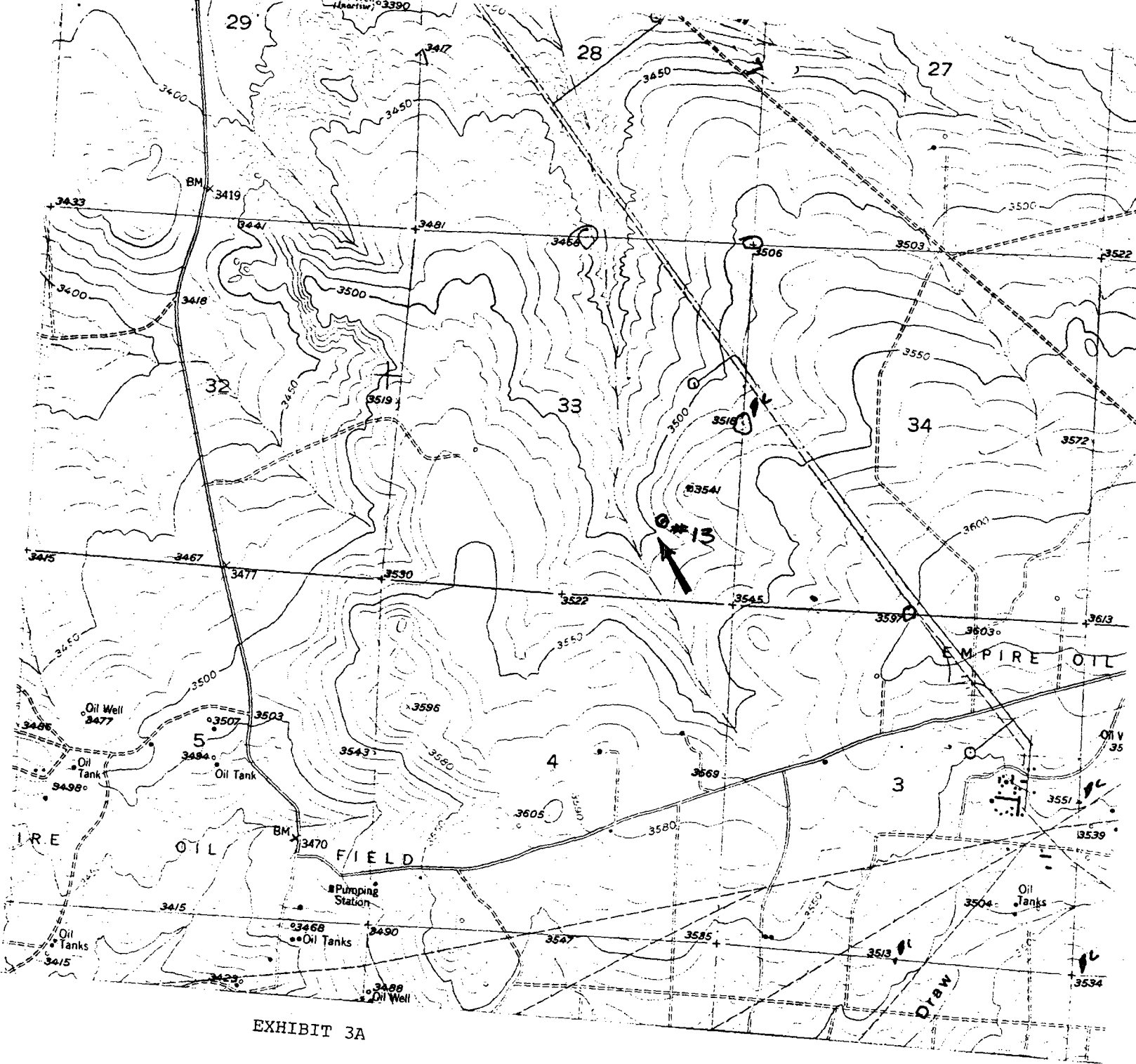
UL or lot No. P	Section 33	Township 17 S	Range 27 E	Lot Idn	Feet from the 1140	North/South line South	Feet from the 1090	East/West line East	County Eddy
--------------------	---------------	------------------	---------------	---------	-----------------------	---------------------------	-----------------------	------------------------	----------------

Bottom Hole Location If Different From Surface

UL or lot No.	Section	Township	Range	Lot Idn	Feet from the	North/South line	Feet from the	East/West line	County
Dedicated Acres 40	Joint or Infill	Consolidation Code	Order No.						

NO ALLOWABLE WILL BE ASSIGNED TO THIS COMPLETION UNTIL ALL INTERESTS HAVE BEEN CONSOLIDATED
OR A NON-STANDARD UNIT HAS BEEN APPROVED BY THE DIVISION

	OPERATOR CERTIFICATION I hereby certify the the information contained herein is true and complete to the best of my knowledge and belief. <u>Candace R. Graham</u> Signature <u>Candace R. Graham</u> Printed Name <u>Engineering Tech.</u> Title <u>July 1, 1996</u> Date
	SURVEYOR CERTIFICATION I hereby certify that the well location shown on this plat was plotted from field notes of actual surveys made by me or under my supervision and that the same is true and correct to the best of my belief. <u>June 3, 1996</u> Date Surveyed <u>[Signature]</u> Signature & Seal of Professional Surveyor <u>W.O. No. 6202t</u> Certificate No. Gary L. Jones 7977 BASIN SURVEYS



DEVON ENERGY CORPORATION
 Eagle 33 "P" Federal #13
 1140' FSL & 1090' FEL
 Sec. 33, T-17-S, R-27-E,
 Eddy County, New Mexico.



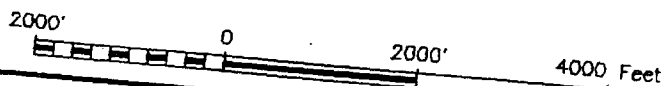
SCALE: 1"=2000'

ASIN SURVEYS P.O. BOX 1786-HOBBS, NEW MEXICO
 .O. Number: 6202

Drawn By: S.C. Nichols

Survey Date: 6-03-96

Sheet 1 of 1 Sheets





ENERGY CORPORATION

20 North Broadway, Suite 1500
Oklahoma City, Oklahoma 73102-8260

Telephone 405/235-3611
FAX 405/552-4550

August 15, 1996

Certified Mail No. Z 731 697 812

Exxon Company, USA
Post Office Box 1600
Midland, Texas 79702-1600

RE: Non-Standard Location Approval
Proposed 2500' San Andres Test
Eagle "33P" Federal #13
1140' FSL & 1090' FEL
Section P-33-T17S-R27E
Eddy County, New Mexico

Gentlemen:

We have applied for a permit to drill the referenced well. This unorthodox location was due to pipeline and topography problems. The proposed well site is in the West Red Lake area in Eddy County, New Mexico, and offsets your lease hold in Section 33-T17S-R27E.

The NMOCD Non-Standard Location Approval process requires that we notify offset lease holders and submit Proof of Notice.

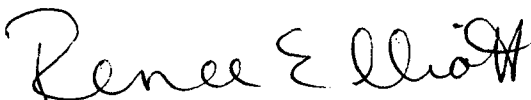
Eagle "33P" Federal #13
Non-Standard Location Approval
August 15, 1996
Page Two

Exxon Company, USA

Please accept this certified letter as notification. If you have any questions, please contact Ernie Buttross, Jr., at (405) 235-3611, X4509.

Sincerely yours,

DEVON ENERGY CORPORATION (NEVADA)

A handwritten signature in black ink that reads "Renee Elliott". The signature is written in a cursive, flowing style.

Renee Elliott
Engineering Tech.

/re

cc: Oil Conservation Division - Santa Fe, NM
Oil Conservation Division - Artesia, NM
Bureau of Land Management - Carlsbad, NM



ENERGY CORPORATION

20 North Broadway, Suite 1500
Oklahoma City, Oklahoma 73102-8260

Telephone 405/235-3611
FAX 405/552-4550

August 15, 1996

Certified Mail No. Z 731 697 813

Amoco Production Company
Post Office Box 4891
Houston, Texas 77210

RE: Non-Standard Location Approval
Eagle "33P" Federal #13
1140' FSL & 1090' FEL
Section P-33-T17S-R27E
Eddy County, New Mexico

Gentlemen:

We have applied for a permit to drill the referenced well. This unorthodox location is necessary due to the original location being close to a nearby pipeline. The proposed well site is in the West Red Lake area in Eddy County, New Mexico, and is offset your lease hold in Section 33-T17S-R27E and 34-T17S-R27E.

The NMOCD Non-Standard Location Approval process requires that we notify offset lease holders and submit Proof of Notice.

Eagle "33P" Federal #13
Non-Standard Location Approval
August 15, 1996
Page Two

Amoco Production Company

Please accept this certified letter as notification. If you have any questions, please contact Ernie Buttross, Jr., at (405) 235-3611, X4509.

Sincerely yours,

DEVON ENERGY CORPORATION (NEVADA)

A handwritten signature in cursive script that reads "Renee Elliott".

Renee Elliott
Engineering Tech.

/re

cc: Oil Conservation Division - Santa Fe, NM
Oil Conservation Division - Artesia, NM
Bureau of Land Management - Carlsbad, NM

OGRID Idn : 6137 API Well No: 30 15 29082 APD Status(A/C/P): A
Opr Name, Addr: DEVON ENERGY CORP (NEVADA) Aprvl/Cncl Date : 08-01-1996
20 N BROADWAY SU 1500
OKLAHOMA CITY,OK 73102

Prop Idn: 19357 EAGLE 33 P FEDERAL Well No: 13

	U/L	Sec	Township	Range	Lot	Idn	North/South	East/West
Surface Locn	: P	33	17S	27E			FTG 1140 F S	FTG 1090 F E
OCD U/L	: P		API County	: 15				

Work typ(N/E/D/P/A) : N Well typ(O/G/M/I/S/W/C): O Cable/Rotary (C/R) : R
Lease typ(F/S/P/N/J/U/I): F Ground Level Elevation : 3512

State Lease No: Multiple Comp (Y/N) : N
Prpsd Depth : 2500 Prpsd Frmtn : SAN ANDRES

E0009: Enter data to modify record

PF01 HELP	PF02	PF03 EXIT	PF04 GoTo	PF05	PF06 CONFIRM
PF07	PF08	PF09 PRINT	PF10 C102	PF11 HISTORY	PF12