

Appropriate District Office  
DISTRICT I  
P.O. Box 1980, Hobbs, NM 88240

DISTRICT II  
P.O. Drawer DD, Artesia, NM 88210

DISTRICT III  
000 Rio Brazos Rd., Aztec, NM 87410

State of New Mexico  
Energy, Minerals and Natural Resources Department

OIL CONSERVATION DIVISION  
RECEIVED  
OIL CONSERVATION DIVISION  
P.O. Box 2088  
Santa Fe, New Mexico 87504-2088

95 NOV 13 AM 8 52

OIL CON. DIV.  
DIST. 3

Form C-107  
Revised 4-1-91

Filing Instruction  
Bottom of Page

## APPLICATION FOR MULTIPLE COMPLETION

UNION OIL COMPANY OF CALIFORNIA DBA UNOCAL, P.O. BOX 850, BLOOMFIELD, NEW MEXICO 87413

Operator	Address
RINCON UNIT	C S36-T27N-R7W
Well No. #131E	RIO ARRIBA
Unit Ltr. - Sec - Twp - Rge	County

All applicants for multiple completion must complete items 1 and 2 below.

1. The following facts are submitted:	Upper Zone	Intermediate Zone	Lower Zone
a. Name of Pool and Formation	SOUTH BLANCO PICTURED CLIFFS	BLANCO MESA VERDE	BASIN DAKOTA
b. Top and Bottom of Pay Section (Perforations)	2974' - 3012'	5100' - 5402'	7244' - 7456'
c. Type of production (Oil or Gas)	GAS	GAS	GAS
d. Method of Production (Flowing or Artificial Lift)	FLOW	FLOW	FLOW
e. Daily Production <input type="checkbox"/> Actual <input checked="" type="checkbox"/> Estimated Oil Bbls. Gas MCF Water Bbls.	650 MCF/D 0 BOPD .10 BWPD	857 MCF/D 7 BOPD 2 BWPD	521 MCF/D 14 BOPD 7 BWPD

2. The following must be attached:
- Diagrammatic Sketch of the multiple Completion, showing all casing strings, including diameters and setting depths, centralizers and/or turbolizers and location thereof, quantities used and top of cement, perforated intervals, tubing strings, including diameters and setting depth, location and type of packers and side door chokes, and such other information as may be pertinent.
  - Plat showing the location of all wells on applicant's lease, all offset wells on offset leases, and the names and addresses of operators of all leases offsetting applicant's lease.
  - Electrical log of the well or other acceptable log with tops and bottoms of producing zones and intervals of perforation indicated thereon. (If such log is not available at the time application is filed it shall be submitted as provided by Rule 112-A)

### OPERATOR:

I hereby certify that the rules and regulations of the Oil Conservation

Signature: *Brett Liggett*  
Printed Name & Title: Brett Liggett, Production Engineer  
Date: 11/06/95 Telephone No.: (505) 632-1811

### OIL CONSERVATION DIVISION

Approved by: *[Signature]*

Title: SUPERVISOR DISTRICT # 1  
Date: NOV - 7 1995

NOTE: If the proposed multiple completion will result in an unorthodox well location and/or a non-standard proration unit in one or more of the producing zones, then separate application for approval of the same should be filed simultaneously with this application.

### FILING INSTRUCTIONS:

- District Approval --- See rule 112-A-B --- Submit 4 copies of Form C-107 with attachments to appropriate district office.
- Division Director Administrative Approval --- See Rule 112-C --- Submit 2 copies of Form C-107 with attachments to Division office in Santa Fe and 2 copies of Form C-107 with attachments to appropriate district office.
- Multiple completions not qualifying of District or Division Director approval may be set for hearing as outlined in Rule 112-A-E.

BL/s1

*Blanco Mesa Verde / Basin Dakota zones downhole commingled under Division Adm. Order DHC-1039 dated August 31, 1994*

**FIGHT BAKER SIZE 47 WLBP @ 7427.**

OIL CONSERV:  
REC:  
04 JU 5 1

## UNOCAL 76

June 28, 1994

### CERTIFIED--RETURN RECEIPT REQUESTED

New Mexico Oil Conservation Division  
Attn: Mr. William J. LeMay  
P. O. Box 2088  
Santa Fe, NM 87504-2088

New Mexico Oil Conservation Division  
Attn: Mr. Frank Chavez  
1000 Rio Brazos Road  
Aztec, NM 87410

Dear Sirs:

Union Oil Company of California (UNOCAL) requests permission to downhole commingle production from the Blanco Mesaverde and Basin Dakota formations in the following wells in Rio Arriba County, New Mexico:

WELL	LOCATION
Rincon Unit No. 138E	790' FSL, 790' FEL Sec. 25, T27N, R7W
Rincon Unit No. 133E	790' FNL, 445' FWL Sec. 14, T27N, R7W
Rincon Unit No. 128M	1175' FSL, 1885' FEL Sec. 28, T27N, R6W
Rincon Unit No. 139E	1980' FNL, 1980' FWL Sec. 25, T27N, R7W
Rincon Unit No. 178E	1500' FSL, 1290' FEL Sec. 23, T27N, R7W
Rincon Unit No. 131E	1145' FNL, 1525' FWL Sec. 36, T27N, R7W
Rincon Unit No. 185E	2100' FSL, 1610' FEL Sec. 22, T27N, R7W
Rincon Unit No. 149E	1900' FNL, 1365' FWL Sec. 30, T27N, R7W

As Provided by Order No. R-9893, administrative approval may be granted without notice and hearing.

In 1993, UNOCAL tested 22 Blanco Mesaverde/Basin Dakota wells for downhole commingling in the Rincon Unit. Every well subsequently qualified. Because of the extensive bottomhole pressure data and productivity data currently available, UNOCAL proposes to allocate production based on the average allocation factor of these wells.

As required for an exception to rule 303-A, the following information is attached:

1. An acreage dedication plat showing offset lease ownership.
2. A Form C-116 showing current productivity from each zone.
3. A wellbore diagram with completion detail.
4. A measured bottomhole pressure from each zone and a calculated adjustment to a common datum.
5. Gas analyses from each zone.
6. An allocation formula for commingled production.
7. A copy of the notification letter sent to all offset operators and the Bureau of Land Management.

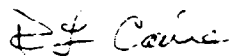
The Blanco Mesaverde formation is uneconomic to drill as a stand alone well. To develop these reserves, a dual or commingled completion is required. We estimate an ultimate recovery of 530 MMCF from the Mesaverde horizon, which would otherwise remain undeveloped. Also, commingling will allow for better lift of liquids production and benefits from compression.

Both zones produce essentially dry gas. Therefore, the respective formation fluids are compatible. Also, no crossflow will occur between the commingled zones.

If you have any questions, please contact Dana Delventhal at (505) 632-1811. Thank you for your consideration in this matter.

Sincerely,

Union Oil Company of California  
dba UNOCAL



Bob Caine  
Field Foreman

Attachments  
DLD

# OFFSET LEASE OWNERSHIP

R 6 W

R 7 W

26	25	30
35	36	31
2	1	6

RINCON UNIT #131E

T 27 N

T 26 N

# RINCON UNIT #131E: PROPOSED

1145' FNL, 1525' FWL  
Sec. 36, T27N, R7W

8 5/8", 24# CSA 350'  
CMT W/ 250 SX CMT

DV TOOL AT 5000'

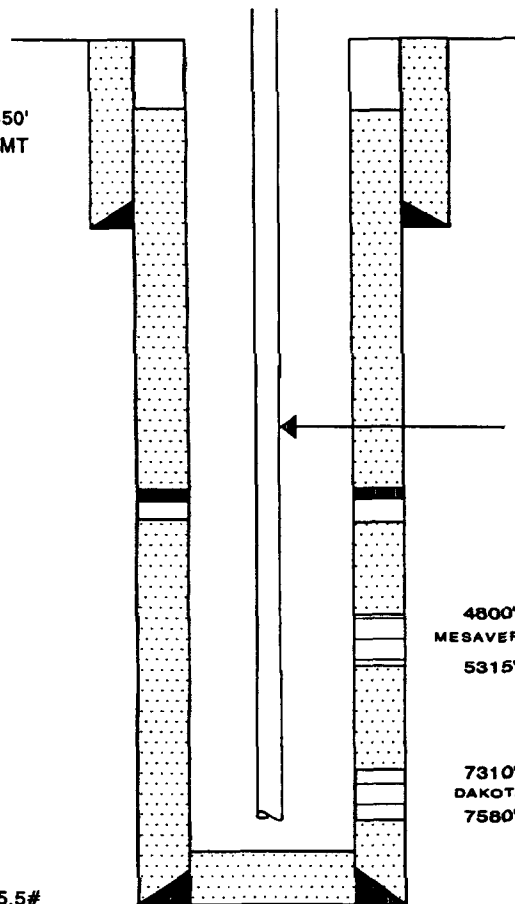
2 3/8", 4.7# TBG AT 7520'

4800'  
MESAVERDE  
5315'

7310'  
DAKOTA  
7580'

PBD 7658'

5 1/2", 17# AND 15.5#  
CASING SET AT 7700'



## BOTTOMHOLE PRESSURE DATA

WELL	MESAVERDE BHP	DAKOTA BHP
Rincon Unit No. 1E	1156 psi	1690 psi
Rincon Unit No. 125M	789 psi	1548 psi
Rincon Unit No. 126	660 psi	850 psi
Rincon Unit No. 126M	921 psi	1607 psi
Rincon Unit No. 127	512 psi	580 psi
Rincon Unit No. 127M	716 psi	1280 psi
Rincon Unit No. 128	801 psi	781 psi
Rincon Unit No. 129	806 psi	836 psi
Rincon Unit No. 129M	1053 psi	935 psi
Rincon Unit No. 130	586 psi	622 psi
Rincon Unit No. 135	481 psi	736 psi
Rincon Unit No. 136E	1139 psi	2199 psi
Rincon Unit No. 137	400 psi	686 psi
Rincon Unit No. 149	471 psi	521 psi
Rincon Unit No. 151M	1228 psi	1862 psi
Rincon Unit No. 158M	1231 psi	766 psi
Rincon Unit No. 159M	603 psi	583 psi
Rincon Unit No. 167M	1007 psi	1909 psi
Rincon Unit No. 170M	940 psi	1752 psi
Rincon Unit No. 175M	735 psi	1108 psi
Rincon Unit No. 180M	585 psi	788 psi
Rincon Unit No. 184M	<u>1753 psi</u>	<u>1708 psi</u>
AVERAGE	<u>844 psi</u>	<u>1152 psi</u>

# PROPOSED ALLOCATION FORMULA

WELL	MESAVERDE		DAKOTA	
	GAS	OIL	GAS	OIL
Rincon Unit No. 1E	38%	50%	62%	50%
Rincon Unit No. 125M	56%	50%	44%	50%
Rincon Unit No. 126	17%	29%	83%	71%
Rincon Unit No. 126M	52%	50%	48%	50%
Rincon Unit No. 127	20%	0%	80%	100%
Rincon Unit No. 127M	17%	50%	83%	50%
Rincon Unit No. 128	17%	0%	83%	100%
Rincon Unit No. 129	8%	0%	92%	100%
Rincon Unit No. 129M	27%	100%	73%	0%
Rincon Unit No. 130	7%	7%	93%	93%
Rincon Unit No. 135	30%	29%	70%	71%
Rincon Unit No. 136E	8%	50%	92%	50%
Rincon Unit No. 137	13%	0%	87%	100%
Rincon Unit No. 149	11%	0%	89%	100%
Rincon Unit No. 151M	26%	50%	74%	50%
Rincon Unit No. 158M	49%	50%	51%	50%
Rincon Unit No. 159M	56%	50%	44%	50%
Rincon Unit No. 167M	21%	0%	79%	100%
Rincon Unit No. 170M	25%	50%	75%	50%
Rincon Unit No. 175M	39%	0%	61%	100%
Rincon Unit No. 180M	61%	50%	39%	50%
Rincon Unit No. 184M	<u>4%</u>	<u>0%</u>	<u>96%</u>	<u>100%</u>
AVERAGE	<u>27%</u>	<u>30%</u>	<u>73%</u>	<u>70%</u>



# UNOCAL 76

June 28, 1994

United States Department of the Interior  
Bureau of Land Management  
1235 La Plata Highway  
Farmington, NM 87401

Dear Sirs:

Union Oil Company of California (UNOCAL) has requested permission from the New Mexico Oil Conservation Division to downhole commingle production from the Blanco Mesaverde and Basin Dakota formations in the following wells in Rio Arriba County, New Mexico:

WELL	LOCATION
Rincon Unit No. 138E	790' FSL, 790' FEL Sec. 25, T27N, R7W
Rincon Unit No. 133E	790' FNL, 445' FWL Sec. 14, T27N, R7W
Rincon Unit No. 128M	1175' FSL, 1885' FEL Sec. 28, T27N, R6W
Rincon Unit No. 139E	1980' FNL, 1980' FWL Sec. 25, T27N, R7W
Rincon Unit No. 178E	1500' FSL, 1290' FEL Sec. 23, T27N, R7W
Rincon Unit No. 131E	1145' FNL, 1525' FWL Sec. 36, T27N, R7W
Rincon Unit No. 185E	2100' FSL, 1610' FEL Sec. 22, T27N, R7W
Rincon Unit No. 149E	1900' FNL, 1365' FWL Sec. 30, T27N, R7W

If you have any objections to this proposal, please notify the NMOCD within twenty (20) days. If you have any questions about this application, please contact Dana Delventhal at (505) 632-1811.

Sincerely,

Union Oil Company of California  
dba UNOCAL



Bob Caine  
Field Foreman

# UNOCAL 76

June 28, 1994

Amoco Production Company  
P. O. Box 800  
Denver, CO 80201

Dear Sirs:

Union Oil Company of California (UNOCAL) has requested permission from the New Mexico Oil Conservation Division to downhole commingle production from the Blanco Mesaverde and Basin Dakota formations in the following wells in Rio Arriba County, New Mexico:

WELL	LOCATION
Rincon Unit No. 138E	790' FSL, 790' FEL Sec. 25, T27N, R7W
Rincon Unit No. 133E	790' FNL, 445' FWL Sec. 14, T27N, R7W
Rincon Unit No. 128M	1175' FSL, 1885' FEL Sec. 28, T27N, R6W
Rincon Unit No. 139E	1980' FNL, 1980' FWL Sec. 25, T27N, R7W
Rincon Unit No. 178E	1500' FSL, 1290' FEL Sec. 23, T27N, R7W
Rincon Unit No. 131E	1145' FNL, 1525' FWL Sec. 36, T27N, R7W
Rincon Unit No. 185E	2100' FSL, 1610' FEL Sec. 22, T27N, R7W
Rincon Unit No. 149E	1900' FNL, 1365' FWL Sec. 30, T27N, R7W

If you have any objections to this proposal, please notify the NMOCD within twenty (20) days. If you have any questions about this application, please contact Dana Delventhal at (505) 632-1811.

Sincerely,

Union Oil Company of California  
dba UNOCAL



Bob Caine  
Field Foreman

## UNOCAL 76

June 28, 1994

Caulkins Oil Company  
1997 East Blanco Blvd.  
Bloomfield, NM 87413

Dear Sirs:

Union Oil Company of California (UNOCAL) has requested permission from the New Mexico Oil Conservation Division to downhole commingle production from the Blanco Mesaverde and Basin Dakota formations in the following wells in Rio Arriba County, New Mexico:

WELL	LOCATION
Rincon Unit No. 138E	790' FSL, 790' FEL Sec. 25, T27N, R7W
Rincon Unit No. 133E	790' FNL, 445' FWL Sec. 14, T27N, R7W
Rincon Unit No. 128M	1175' FSL, 1885' FEL Sec. 28, T27N, R6W
Rincon Unit No. 139E	1980' FNL, 1980' FWL Sec. 25, T27N, R7W
Rincon Unit No. 178E	1500' FSL, 1290' FEL Sec. 23, T27N, R7W
Rincon Unit No. 131E	1145' FNL, 1525' FWL Sec. 36, T27N, R7W
Rincon Unit No. 185E	2100' FSL, 1610' FEL Sec. 22, T27N, R7W
Rincon Unit No. 149E	1900' FNL, 1365' FWL Sec. 30, T27N, R7W

If you have any objections to this proposal, please notify the NMOCD within twenty (20) days. If you have any questions about this application, please contact Dana Delventhal at (505) 632-1811.

Sincerely,

Union Oil Company of California  
dba UNOCAL



Bob Caine  
Field Foreman

## UNOCAL 76

June 28, 1994

Meridian Oil, Inc.  
P. O. Box 4289  
Farmington, NM 87499

Dear Sirs:

Union Oil Company of California (UNOCAL) has requested permission from the New Mexico Oil Conservation Division to downhole commingle production from the Blanco Mesaverde and Basin Dakota formations in the following wells in Rio Arriba County, New Mexico:

WELL	LOCATION
Rincon Unit No. 138E	790' FSL, 790' FEL Sec. 25, T27N, R7W
Rincon Unit No. 133E	790' FNL, 445' FWL Sec. 14, T27N, R7W
Rincon Unit No. 128M	1175' FSL, 1885' FEL Sec. 28, T27N, R6W
Rincon Unit No. 139E	1980' FNL, 1980' FWL Sec. 25, T27N, R7W
Rincon Unit No. 178E	1500' FSL, 1290' FEL Sec. 23, T27N, R7W
Rincon Unit No. 131E	1145' FNL, 1525' FWL Sec. 36, T27N, R7W
Rincon Unit No. 185E	2100' FSL, 1610' FEL Sec. 22, T27N, R7W
Rincon Unit No. 149E	1900' FNL, 1365' FWL Sec. 30, T27N, R7W

If you have any objections to this proposal, please notify the NMOCD within twenty (20) days. If you have any questions about this application, please contact Dana Delventhal at (505) 632-1811.

Sincerely,

Union Oil Company of California  
dba UNOCAL



Bob Caine  
Field Foreman