

DOYLE HARTMAN
Oil and Natural Gas Operator
500 NORTH MAIN
P.O. BOX 10426
MIDLAND, TEXAS 79702

2005 JUN 7 AM 10 09

(432) 684-4011
(432) 682-7616 FAX

May 19, 2005

New Mexico Oil Conservation Division
2040 S. Pacheco
Santa Fe, NM 87505

Attn: Michael Stogner, Chief Hearing Officer

Re: Doyle Hartman's Application for the continuation of production, under NMOCD Order No. R-3832, Dated September 8, 1969, corresponding to the Stevens "B" Nos. 15 and 16 Wells and 360-Acre Jalmat Gas Spacing Unit consisting of W/2, NW/4NE/4, Section 18, T-23-S, R-37-E Lea County, New Mexico

Dear Mr. Stogner:

Reference is made to our herein enclosed Form 3160-3 application, to the BLM, for the re-entry of the Stevens "B" No. 16 well (K-18-23S-37E), and the continuation of gas production, from the subject well and corresponding 360-acre Jalmat proration unit.

As can be ascertained from the herein-enclosed Stevens "B" No. 16 well history and log, the Stevens "B" No. 16 well was completed January 12, 1948, and produced for 48 years from the Yates-Seven Rivers open-hole interval, between 2736' and 3478', which interval corresponds to the Jalmat-Upper Langlie Mattix vertical section. By virtue of NMOCD Order R-3832, dated September 8, 1969, the NMOCD approved the 360-acre Jalmat gas proration unit consisting of the W/2 and NW/4NE/4 Section 18, T-23-S, R-37-E, along with the simultaneous dedication of the Stevens "B" Nos. 15 and 16 wells to the subject gas proration unit.

In conjunction with our currently pending BLM Form 3160-3 re-entry application, we hereby make application for the continuation of production operations, under the **previously-approved** provisions of NMOCD Order R-3832, corresponding to the 360-acre Jalmat tract consisting of the W/2 and NW/4NE/4 Section 18, T-23-S, R-37-E, and the Stevens "B" Nos. 15 and 16 wellbores and producing intervals.

Notice of this Administrative Application (for continued production operations) has been sent by certified mail to all offsetting Jalmat operators. Approval of this application (for reactivation of

Michael Stogner, Chief Hearing Officer
New Mexico Oil Conservation Division
May 19, 2005
Page 2

NMOCD Order R-3832) will both prevent waste and protect correlative rights, by facilitating the recovery of valuable reserves that would otherwise not be recoverable.

Sincerely yours,

Doyle Hartman, Oil Operator

A handwritten signature in black ink, appearing to read "Steve Hartman", with a stylized flourish at the end.

Steve Hartman
Engineer

cc: J.E. Gallegos
Gallegos Law Firm
460 St. Michaels Drive, Building 300
Santa Fe, NM 87505

Richard Manus, Area Manager
Bureau of Land Management
620 E. Greene St. (88220)
P.O. Box 1778
Carlsbad, NM 88220-1778

Michael Stogner, Chief Hearing Officer
New Mexico Oil Conservation Division
May 19, 2005
Page 3

**Offset Operators to Doyle Hartman
Stevens "B" Proration Unit
W/2 and NW/4NE/4 Section 18
T-23-S, R-37-E
Lea County, New Mexico
(360 acres)**

Roca Production, Inc.
P.O. Box 10139
Midland, Texas 79702

Mission Resources, Inc.
1331 Lamar, Suite 1455
Houston, Texas 77010

Gruy Petroleum Management Co.
3300 N. "A", Building 8, Suite 120
Midland, Texas 79705

BP America
501 Westlake Park Boulevard
Houston, Texas 77079

Wildcat Energy, LLC
P.O. Box 13323
Odessa, Texas 79768

John H. Hendrix
John H. Hendrix Corporation
P.O. Box 3040
Midland, TX 79702

**Tabulation of Offset Operators
to Doyle Hartman
Stevens "B" Proration Unit
W/2 and NW/4NE/4 Section 18
T-23-S, R-37-E
Lea County, New Mexico
(360 acres)**

Tract No.	Color	Operator	Offset Lease	Acreage Description
1	Orange	Roca Production, Inc.	E F King	SE/4 Section 12 T-23-S, R-36-E (160 acres)
2	Dark Green	Mission Resources, Inc.	State "A" Acct-1	NE/4, W/2 Section 13 T-23-S, R-36-E (480 acres)
3	Light Blue	Gruy Petroleum Management Co.	Shell State	SE/4 Section 13 T-23-S, R-36-E (160 acres)
4	Pink	Gruy Petroleum Management Co.	Janda "G"	NE/4 Section 24 T-23-S, R-36-E (160 acres)
5	Green	Gruy Petroleum Management Co.	Samedan Hughes	NW/4 Section 19 T-23-S, R-37-E (160 acres)
6	Royal Blue	BP America	Duthie Andrews	SE/4 Section 18 NE/4 Section 19 T-23-S, R-37-E (320 acres)
7	Brown	Wildcat Energy, LLC	Hughes Fed	E/2NE/4, SW/4NE/4 Section 18 T-23-S, R-37-E (120 acres)
8	Purple	John H. Hendrix Corporation	Stevens "B"	S/2 Section 7 T-23-S, R-37-E (320 acres)

23S-36E

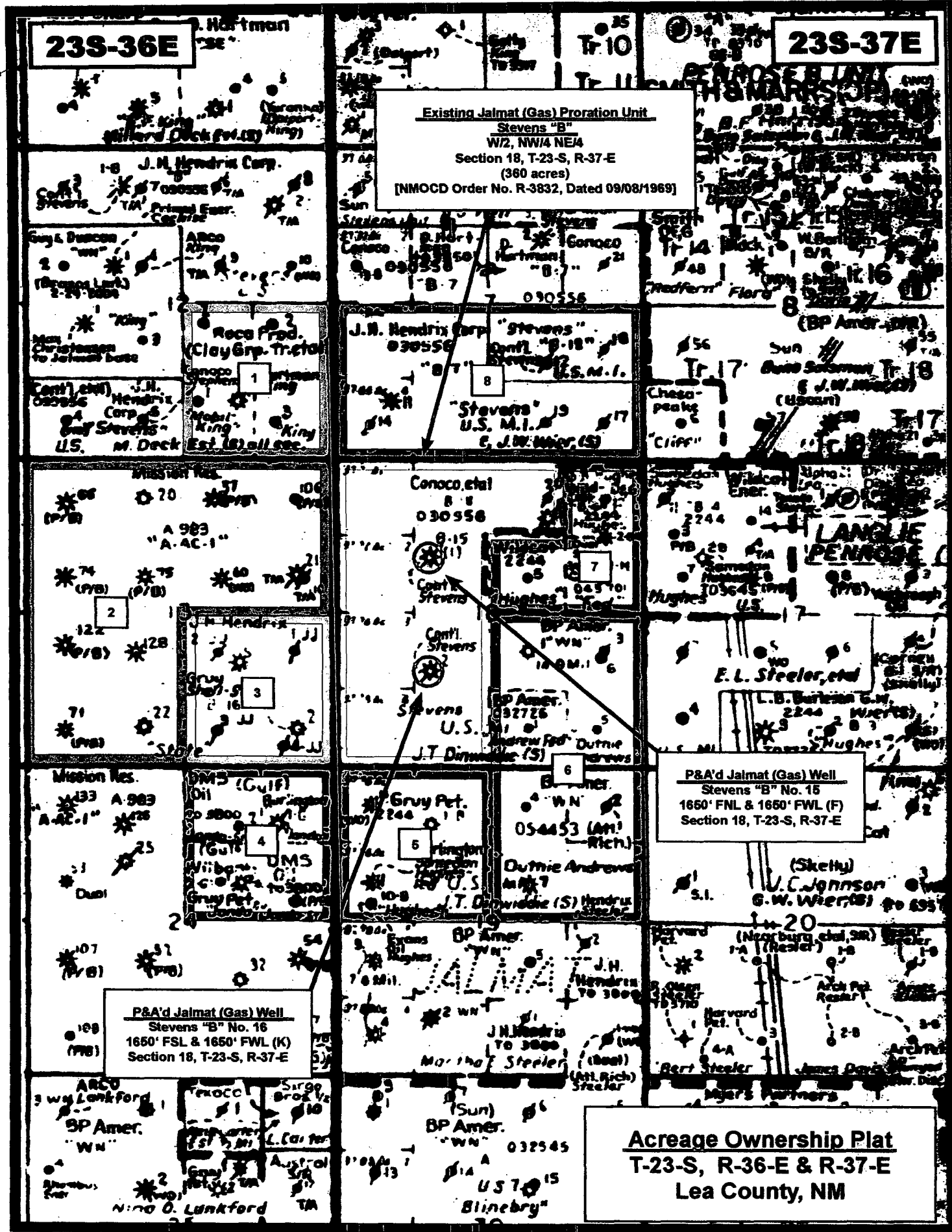
23S-37E

Existing Jalmat (Gas) Proration Unit
Stevens "B"
W/2, NW/4 NE4
Section 18, T-23-S, R-37-E
(360 acres)
[NMOC Order No. R-3832, Dated 09/08/1969]

P&A'd Jalmat (Gas) Well
Stevens "B" No. 16
1650' FSL & 1650' FWL (K)
Section 18, T-23-S, R-37-E

P&A'd Jalmat (Gas) Well
Stevens "B" No. 15
1650' FNL & 1650' FWL (F)
Section 18, T-23-S, R-37-E

Acreage Ownership Plat
T-23-S, R-36-E & R-37-E
Lea County, NM



UNITED STATES
DEPARTMENT OF THE INTERIOR
BUREAU OF LAND MANAGEMENTSUBMIT IN TRIPLICATE*
(Other instructions on
reverse side)FORM APPROVED
OMB NO. 1004-0136
Expires: February 28, 1995

APPLICATION FOR PERMIT TO DRILL OR DEEPEN

1a. TYPE OF WORK

DRILL ☐Re-enter ☒

b. TYPE OF WELL

OIL
WELL ☐GAS
WELL ☒

OTHER

SINGLE
ZONE ☐MULTIPLE
ZONE ☐

2. NAME OF OPERATOR

Doyle Hartman

3. ADDRESS AND TELEPHONE NO.

500 N. Main St., Midland, TX 79701, (432) 684-4011

4. LOCATION OF WELL (Report location clearly and in accordance with any State requirements.)

At surface

1650' FSL & 1650' FWL (Unit K)

At proposed prod. zone

1650' FSL & 1650' FWL (Unit K)

14. DISTANCE IN MILES AND DIRECTION FROM NEAREST TOWN OR POST OFFICE*

Approximately 12.8 miles North of Jal, NM

15. DISTANCE FROM PROPOSED*

LOCATION TO NEAREST
PROPERTY OR LEASE LINE, FT.
(Also to nearest drg. unit line, if any)

16. NO. OF ACRES IN LEASE

360

17. NO. OF ACRES ASSIGNED
TO THIS WELL

360

18. DISTANCE FROM PROPOSED LOCATION*
TO NEAREST WELL, DRILLING, COMPLETED,
OR APPLIED FOR, ON THIS LEASE, FT.

19. PROPOSED DEPTH

3478'

20. ROTARY OR CABLE TOOLS

Rotary

21. ELEVATIONS (Show whether DF, RT, GR, etc.)

3349' GR

22. APPROX. DATE WORK WILL START*

5/15/2005

23. PROPOSED CASING AND CEMENTING PROGRAM

SIZE OF HOLE	GRADE, SIZE OF CASING	WEIGHT PER FOOT	SETTING DEPTH	QUANTITY OF CEMENT
11"	7 5/8"	N/A	1209'	500 sx (Circ.), 12/22/1947
7 7/8"	5 1/2"	14 #/ft	2736'	500 sx (TOC @ 1397'), 12/30/1947
4 3/4"	4 1/2", J-55 (FJL)	11.6 #/ft	2600' - 3478'	Squeeze w/ 1400 sx

The Stevens "B" No. 16 well was completed, on 1/12/1948, as an open-hole Jalmat (Yates-Seven Rivers) gas producer, from 2736' to 3478', for an initial potential of 45,400 MCFPD, and a wellhead shut-in pressure of 1290 psig.

On 9/16/1996 - 9/18/1996, Conoco plugged and abandoned the well, as follows:

1. 2 3/8" Tbg cut at 2600', and left remainder in hole.
2. Set CIBP at 2530', with 25 sx of cement on top of plug (open-hole Jalmat strata was not squeezed).
3. Spotted 25 sx cement plug from 1120' to 1360'.
4. Spotted 70 sx cement plug from 0' to 350'.

It is proposed to DO and CO to 2500', fish 5 1/2" CIBP and 2 3/8" O.D. tbg, CO to 3478', set 4 1/2" O.D. FJL w/ 1400 sx, perf Jalmat 2940' - 3110', acidize, frac, and return to production.

IN ABOVE SPACE DESCRIBE PROGRAM: If proposal is to deepen, give data on present productive zone and proposed new productive zone. If proposal is to drill or deepen directionally, give pertinent data on subsurface locations and measured and true vertical depths. Give blowout preventer program, if any.

24.

SIGNED



TITLE Engineer

DATE 04/05/2005

(This space for Federal or State office use)

PERMIT NO.

APPROVAL DATE

Application approval does not warrant or certify that the applicant holds legal or equitable title to those rights in the subject lease which would entitle the applicant to conduct operations thereon.
CONDITIONS OF APPROVAL, IF ANY:

APPROVED BY:

TITLE

DATE

*See Instructions On Reverse Side

Title 18 U.S.C. Section 1001, makes it a crime for any person knowingly and willfully to make to any department or agency of the United States any false, fictitious or fraudulent statements or representations as to any matter within its jurisdiction.

District I
PO Box 1980, Hobbs, NM 88241-1980

District II
811 South First, Artesia, NM 88210

District III
1000 Rio Brazos Rd., Aztec, NM 87410

District IV
2040 South Pacheco, Santa Fe, NM 87505

State of New Mexico
Energy, Minerals & Natural Resources Department

OIL CONSERVATION DIVISION
2040 South Pacheco
Santa Fe, NM 87505

Form C-102
Revised October 18, 1994
Instructions on back
Submit to Appropriate District Office
State Lease - 4 Copies
Fee Lease - 3 Copies

☐ AMENDED REPORT

WELL LOCATION AND ACREAGE DEDICATION PLAT

API Number 30-025-10793	Pool Code 79240	Pool Name Jalmat (T-Y-7R)
Property Code 3112	Property Name Stevens "B"	Well Number 16
OGRID No. 6473	Operator Name Doyle Hartman	Elevation 3349' GR




Surface Location

UL or lot no. K	Section 18	Township 23S	Range 37E	Lot Idn	Feet from the 1650'	North/South line South	Feet from the 1650'	East/West Line West	County Lea
--------------------	---------------	-----------------	--------------	---------	------------------------	---------------------------	------------------------	------------------------	---------------

Bottom Hole Location If Different From Surface

UL or lot no.	Section	Township	Range	Lot Idn	Feet from the	North/South line	Feet from the	East/West Line	County
Dedicated Acres 360	Joint or Infrac Y	Consolidation Code	Order No. NMOCD Order No. R-3832, Dated 09/08/1969						

NO ALLOWABLE WILL BE ASSIGNED TO THIS COMPLETION UNTIL ALL INTERESTS HAVE BEEN CONSOLIDATED
OR A NON-STANDARD UNIT HAS BEEN APPROVED BY THE DIVISION

① 37.71				OPERATOR CERTIFICATION I hereby certify that the information contained herein is true and complete to the best of my knowledge and belief.  Signature Steve Hartman Printed Name Engineer Title 04/05/2005 Date	
② 37.72	 15				SURVEYOR CERTIFICATION I hereby certify that the well location shown on this plat was plotted from field notes of actual surveys made by me or under my supervision, and that the same is true and correct to the best of my belief. Date of Survey Signature and Seal of Professional Surveyer: Certificate Number
③ 37.74					
④ 37.75	 16				

Existing Jalmat (Gas) P.U.
Stevens "B"
W/2, NW/4 NE/4 Sec. 18
T-23-S, R-37-E
Lea County, NM
(360 acres)

P&A'd Jalmat (Gas) Well
Stevens "B" No. 15
1650' FNL & 1650' FWL (F)
Section 18, T-23-S, R-37-E

P&A'd Jalmat (Gas) Well
Stevens "B" No. 16
1650' FSL & 1650' FWL (K)
Section 18, T-23-S, R-37-E

Topographic Well Location Plat
T-23-S, R-36-E & R-37-E
Lea County, NM
Exhibit "MP-1"

**Doyle Hartman
Multi-Point Surface Use
and Operations Plan**

Nearest Fresh Water Well

State Hwy No. 10

To Eunice

**Carbon
Black
Plant**

P&A'd Jalmat (Gas) Well
Stevens "B" No. 16
1650' FSL & 1650' FWL (K)
Section 18, T-23-S, R-37-E

To Jal

23S-36E

23S-37E

Existing Jalmat (Gas) Proration Unit

Stevens "B"
W/2, NW/4 NE/4
Section 18, T-23-S, R-37-E
(360 acres)
[NMOCD Order No. R-3832, Dated 09/08/1969]

P&A'd Jalmat (Gas) Well
Stevens "B" No. 15
1650' FNL & 1650' FWL (F)
Section 18, T-23-S, R-37-E

P&A'd Jalmat (Gas) Well
Stevens "B" No. 16
1650' FSL & 1650' FWL (K)
Section 18, T-23-S, R-37-E

Acreage Ownership Plat
T-23-S, R-36-E & R-37-E
Lea County, NM
Exhibit "MP-2"

Doyle Hartman
Multi-Point Surface Use
and Operations Plan

List of Offset Wells
Stevens "B" No. 16
1650' F8L & 1650' FWL (K)
Section 18, T-23-S, R-37-E
Lea County, NM
Table "MP-2"

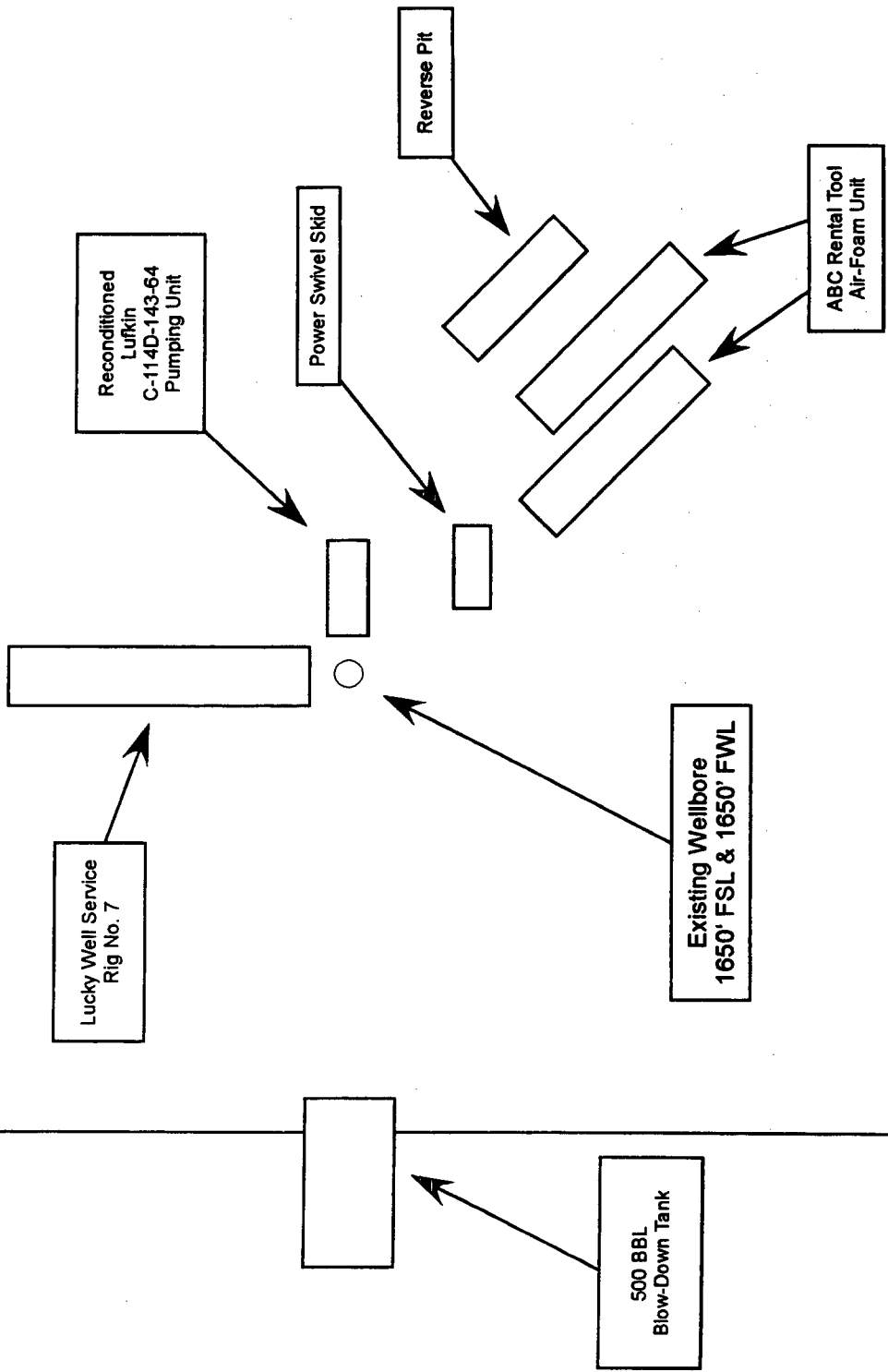
Operator Current Name	Field Name	Prod Zone Name	Lease Name	Well Number	Location
HENDRIX JOHN H CORPORATION	SWD	QUEEN	STEVENS B	8	12A 23S 36E
CONOCO INCORPORATED	LANGLIE-MATTIX	SEVEN RIVERS-QUEEN	STEVENS B	8	12A 23S 36E
HENDRIX JOHN H CORPORATION	JALMAT	TANSILL-YATES	STEVENS B	2	12A 23S 36E
HENDRIX JOHN H CORPORATION	LANGLIE-MATTIX	SEVEN RIVERS-QUEEN	STEVENS B	6	12B 23S 36E
HENDRIX JOHN H CORPORATION	LANGLIE-MATTIX	SEVEN RIVERS-QUEEN	STEVENS B	7	12C 23S 36E
CONOCO INCORPORATED	JALMAT	TANSILL-YATES	STEVENS B	1	12C 23S 36E
CONOCO INCORPORATED	LANGLIE-MATTIX	SEVEN RIVERS-QUEEN	STEVENS B	3	12D 23S 36E
GUY JERRY W & DUNCAN THURMAN F	LANGLIE-MATTIX	SEVEN RIVERS-QUEEN	KING WN	2	12E 23S 36E
PRIMAL ENERGY CORPORATION	JALMAT	TANSILL-YATES	COCHISE-KING GAS COM	1	12F 23S 36E SE NW
ARCO OIL & GAS CORPORATION	LANGLIE-MATTIX	SEVEN RIVERS-QUEEN	KING OIL WN COM	4	12F 23S 36E
HENDRIX JOHN H CORPORATION	LANGLIE-MATTIX	SEVEN RIVERS-QUEEN	STEVENS B	9	12G 23S 36E
CONOCO INCORPORATED	LANGLIE-MATTIX	SEVEN RIVERS-QUEEN	STEVENS B	10	12H 23S 36E
HENDRIX JOHN H CORPORATION	JALMAT	TANSILL-YATES	STEVENS B	10	12H 23S 36E
ROCA PRODUCTION INCORPORATED	LANGLIE-MATTIX	SEVEN RIVERS-QUEEN	E F KING	2	12I 23S 36E
ROCA PRODUCTION INCORPORATED	LANGLIE-MATTIX	SEVEN RIVERS-QUEEN	MOBIL KING	2	12J 23S 36E
GUY JERRY W & DUNCAN THURMAN F	LANGLIE-MATTIX	SEVEN RIVERS-QUEEN	KING WN	3	12K 23S 36E
PRIMAL ENERGY CORPORATION	LANGLIE-MATTIX	SEVEN RIVERS-QUEEN	COCHISE-KING GAS COM	1	12L 23S 36E
PRIMAL ENERGY CORPORATION	JALMAT	TANSILL-YATES	COCHISE-KING GAS COM	2	12L 23S 36E
HENDRIX JOHN H CORPORATION	JALMAT	TANSILL-YATES	STEVENS B	4	12M 23S 36E
CONOCO INCORPORATED	LANGLIE-MATTIX	SEVEN RIVERS-QUEEN	STEVENS B	4	12M 23S 36E
CONOCO INCORPORATED	LANGLIE-MATTIX	SEVEN RIVERS-QUEEN	STEVENS B	5	12N 23S 36E
ROCA PRODUCTION INCORPORATED	LANGLIE-MATTIX	SEVEN RIVERS-QUEEN	MOBIL KING	1	12O 23S 36E
ROCA PRODUCTION INCORPORATED	JALMAT	TANSILL-YATES	E F KING	1	12O 23S 36E
ROCA PRODUCTION INCORPORATED	LANGLIE-MATTIX	SEVEN RIVERS-QUEEN	E F KING	3	12P 23S 36E
RASMUSSEN HAL J OPERATING INCORPORATED	LANGLIE-MATTIX	SEVEN RIVERS-QUEEN	STATE A A C 1	108	13A 23S 36E NE NE
MISSION RESOURCES INCORPORATED	JALMAT	TANSILL-YATES	STATE A A C 1	106	13A 23S 36E NE NE
RASMUSSEN HAL J OPERATING INCORPORATED	LANGLIE-MATTIX	SEVEN RIVERS-QUEEN	STATE A A C 1	57	13B 23S 36E NW NE
MISSION RESOURCES INCORPORATED	JALMAT	TANSILL-YATES	STATE A A C 1	57	13B 23S 36E NW NE
MISSION RESOURCES INCORPORATED	JALMAT	TANSILL-YATES	STATE A A C 1	20	13C 23S 36E
RASMUSSEN HAL J OPERATING INCORPORATED	LANGLIE-MATTIX	SEVEN RIVERS-QUEEN	STATE A A C 1	66	13D 23S 36E NW NW
MISSION RESOURCES INCORPORATED	JALMAT	TANSILL-YATES	STATE A A C 1	66	13D 23S 36E NW NW
MISSION RESOURCES INCORPORATED	JALMAT	TANSILL-YATES	STATE A A C 1	74	13E 23S 36E
MARIAH ENERGY CORPORATION	LANGLIE-MATTIX	SEVEN RIVERS-QUEEN	STATE A A C 1	74	13E 23S 36E
MISSION RESOURCES INCORPORATED	JALMAT	TANSILL-YATES	STATE A A C 1	75	13F 23S 36E SE NW
RASMUSSEN HAL J OPERATING INCORPORATED	LANGLIE-MATTIX	SEVEN RIVERS-QUEEN	STATE A A C 1	75	13F 23S 36E SE NW
MISSION RESOURCES INCORPORATED	JALMAT	TANSILL-YATES	STATE A A C 1	60	13G 23S 36E C SW NE
WILLIAMS CLAYTON ENERGY INCORPORATED	LANGLIE-MATTIX	SEVEN RIVERS-QUEEN	STATE A A C 1	60	13G 23S 36E C SW NE
WILLIAMS CLAYTON W JR INCORPORATED	JALMAT	TANSILL-YATES	STATE A A C 1	21	13H 23S 36E
WILLIAMS CLAYTON W JR INCORPORATED	LANGLIE-MATTIX	SEVEN RIVERS-QUEEN	STATE A A C 1	110	13H 23S 36E
HENDRIX JOHN H CORPORATION	LANGLIE-MATTIX	SEVEN RIVERS-QUEEN	STATE JJ	1	13I 23S 36E
GRUY PETROLEUM MANAGEMENT COMPANY	JALMAT	TANSILL-YATES	SHELL STATE	5	13J 23S 36E
HENDRIX JOHN H CORPORATION	LANGLIE-MATTIX	SEVEN RIVERS-QUEEN	STATE JJ	2	13J 23S 36E
MISSION RESOURCES INCORPORATED	JALMAT	TANSILL-YATES	STATE A A C 1	128	13K 23S 36E W2 NE SW
MISSION RESOURCES INCORPORATED	JALMAT	TANSILL-YATES	STATE A A C 1	122	13L 23S 36E NW SW
RASMUSSEN HAL J OPERATING INCORPORATED	LANGLIE-MATTIX	SEVEN RIVERS-QUEEN	STATE A A C 1	122	13L 23S 36E NW SW
RASMUSSEN HAL J OPERATING INCORPORATED	LANGLIE-MATTIX	SEVEN RIVERS-QUEEN	STATE A A C 1	71	13M 23S 36E SW SW
MISSION RESOURCES INCORPORATED	JALMAT	TANSILL-YATES	STATE A A C 1	71	13M 23S 36E SW SW
MISSION RESOURCES INCORPORATED	JALMAT	TANSILL-YATES	STATE A A C 1	22	13N 23S 36E
HENDRIX JOHN H CORPORATION	LANGLIE-MATTIX	SEVEN RIVERS-QUEEN	STATE JJ	3	13O 23S 36E
GRUY PETROLEUM MANAGEMENT COMPANY	JALMAT	TANSILL-YATES	SHELL STATE	2	13P 23S 36E
HENDRIX JOHN H CORPORATION	LANGLIE-MATTIX	SEVEN RIVERS-QUEEN	STATE JJ	4	13P 23S 36E
MERIDIAN OIL INCORPORATED	JALMAT	TANSILL-YATES	J F JANDA NCT G	1	24A 23S 36E
DMS OIL COMPANY	LANGLIE-MATTIX	SEVEN RIVERS-QUEEN	JANDA STATE	2	24B 23S 36E
MISSION RESOURCES INCORPORATED	JALMAT	TANSILL-YATES	STATE A A C 1	128	24C 23S 36E NE NW
MISSION RESOURCES INCORPORATED	JALMAT	TANSILL-YATES	STATE A A C 1	133	24D 23S 36E C NW NW
MISSION RESOURCES INCORPORATED	JALMAT	TANSILL-YATES	STATE A A C 1	53	24E 23S 36E
MISSION RESOURCES INCORPORATED	LANGLIE-MATTIX	SEVEN RIVERS-QUEEN	STATE A A C 1	53	24E 23S 36E
WILLIAMS CLAYTON ENERGY INCORPORATED	JALMAT	TANSILL-YATES	STATE A A C-1	25	24F 23S 36E
HARTMAN DOYLE	LANGLIE-MATTIX	SEVEN RIVERS-QUEEN	JANDA	1	24G 23S 36E
GRUY PETROLEUM MANAGEMENT COMPANY	JALMAT	TANSILL-YATES	J F JANDA NCT-G	2	24G 23S 36E
DMS OIL COMPANY	LANGLIE-MATTIX	SEVEN RIVERS-QUEEN	JANDA STATE	1	24H 23S 36E
MISSION RESOURCES INCORPORATED	JALMAT	TANSILL-YATES	STATE A A C 1	54	24I 23S 36E NE SE
RASMUSSEN HAL J OPERATING INCORPORATED	LANGLIE-MATTIX	SEVEN RIVERS-QUEEN	STATE A A C 1	54	24I 23S 36E NE SE
MISSION RESOURCES INCORPORATED	JALMAT	TANSILL-YATES	STATE A A C 1	32	24J 23S 36E
MISSION RESOURCES INCORPORATED	JALMAT	TANSILL-YATES	STATE A A C 1	52	24K 23S 36E NE SW
RASMUSSEN HAL J OPERATING INCORPORATED	LANGLIE-MATTIX	SEVEN RIVERS-QUEEN	STATE A A C 1	52	24K 23S 36E NE SW
RASMUSSEN HAL J OPERATING INCORPORATED	LANGLIE-MATTIX	SEVEN RIVERS-QUEEN	STATE A A C 1	107	24L 23S 36E NW SW
MISSION RESOURCES INCORPORATED	JALMAT	TANSILL-YATES	STATE A A C 1	107	24L 23S 36E NW SW
WILLIAMS CLAYTON W JR INCORPORATED	LANGLIE-MATTIX	SEVEN RIVERS-QUEEN	STATE A A C 1	108	24M 23S 36E SW SW
MISSION RESOURCES INCORPORATED	JALMAT	TANSILL-YATES	STATE A A C 1	108	24M 23S 36E SW SW
WILLIAMS CLAYTON ENERGY INCORPORATED	JALMAT	TANSILL-YATES	STATE A A C 1	24	24N 23S 36E
MISSION RESOURCES INCORPORATED	LANGLIE-MATTIX	SEVEN RIVERS-QUEEN	STATE A A C 1	51	24N 23S 36E
RASMUSSEN HAL J OPERATING INCORPORATED	LANGLIE-MATTIX	SEVEN RIVERS-QUEEN	STATE A A C 1	50	24O 23S 36E SW SE
MISSION RESOURCES INCORPORATED	JALMAT	TANSILL-YATES	STATE A A C 1	50	24O 23S 36E SW SE
MISSION RESOURCES INCORPORATED	JALMAT	TANSILL-YATES	STATE A A C 1	17	24P 23S 36E
MARIAH ENERGY CORPORATION	LANGLIE-MATTIX	SEVEN RIVERS-QUEEN	STATE A A C 1	17	24P 23S 36E
HARTMAN DOYLE	JALMAT	TANSILL-YATES	STEVENS B	13	7 23S 37E SW NW
HENDRIX JOHN H CORPORATION	JALMAT	TANSILL-YATES	STEVENS B	11	7 23S 37E
ROCA PRODUCTION INCORPORATED	JALMAT	TANSILL-YATES	STEVENS B 7	1	7 23S 37E
CELERO ENERGY LIMITED PARTNERSHIP	LANGLIE-MATTIX	SEVEN RIVERS-QUEEN	SKELLY PENROSE B UNIT	48	7A 23S 37E
SMITH & MARRS INCORPORATED	LANGLIE-MATTIX	SEVEN RIVERS-QUEEN	SKELLY PENROSE B UNIT	47	7B 23S 37E
SUN OIL COMPANY	LANGLIE-MATTIX	SEVEN RIVERS-QUEEN	A D RICHARDS	5	7D 23S 37E
HARTMAN DOYLE	LANGLIE-MATTIX	SEVEN RIVERS-QUEEN	STEVENS B 7 COM	2	7G 23S 37E
HARTMAN DOYLE	LANGLIE-MATTIX	SEVEN RIVERS-QUEEN	STEVENS B	21	7H 23S 37E
HENDRIX JOHN H CORPORATION	LANGLIE-MATTIX	SEVEN RIVERS-QUEEN	STEVENS B	18	7I 23S 37E
CONTINENTAL OIL COMPANY	JALMAT	TANSILL-YATES	STEVENS B	12	7J 23S 37E
CONOCO INCORPORATED	LANGLIE-MATTIX	SEVEN RIVERS-QUEEN	STEVENS B	12	7J 23S 37E
CONOCO INCORPORATED	LANGLIE-MATTIX	SEVEN RIVERS-QUEEN	STEVENS B	14	7M 23S 37E
HENDRIX JOHN H CORPORATION	LANGLIE-MATTIX	SEVEN RIVERS-QUEEN	STEVENS B	17	7P 23S 37E
CHEVRON U S A INCORPORATED	TEAGUE SOUTHWEST	GLORIETA LOWER	F B DAVIS	2	8A 23S 37E NE NE
CHEVRON U S A INCORPORATED	TEAGUE NORTH	DRINKARD-ABO	F B DAVIS	1	8A 23S 37E NE NE
CELERO ENERGY LIMITED PARTNERSHIP	LANGLIE-MATTIX	SEVEN RIVERS-QUEEN	SKELLY PENROSE B UNIT	43	8A 23S 37E
CHEVRON U S A INCORPORATED	TEAGUE SOUTHWEST	GLORIETA LOWER	F B DAVIS	4	8A 23S 37E SE SE NE
CHEVRON U S A INCORPORATED	WILDCA1	BRUSHY CANYON	F B DAVIS	1	8A 23S 37E NE NE
CHEVRON U S A INCORPORATED	TEAGUE SOUTHWEST	GLORIETA LOWER	F B DAVIS	4	8A 23S 37E SE SE NE
CHEVRON U S A INCORPORATED	TEAGUE NORTH	PADDOCK LOWER	F B DAVIS	1	8A 23S 37E NE NE
CHEVRON U S A INCORPORATED	TEAGUE	DRINKARD	F B DAVIS	1	8A 23S 37E NE NE
CHEVRON U S A INCORPORATED	TEAGUE NORTH	TUBB	F B DAVIS	1	8A 23S 37E NE NE
CHEVRON U S A INCORPORATED	TEAGUE SOUTHWEST	GLORIETA LOWER	F B DAVIS	6	8B 23S 37E
CHEVRON U S A INCORPORATED	TEAGUE NORTH	DRINKARD	F B DAVIS	8	8B 23S 37E SW NW NE
CHEVRON U S A INCORPORATED	TEAGUE NORTH	PADDOCK LOWER	F B DAVIS	8	8B 23S 37E SW NW NE
CHEVRON U S A INCORPORATED	TEAGUE NORTH	PADDOCK LOWER	F B DAVIS	6	8B 23S 37E
CELERO ENERGY LIMITED PARTNERSHIP	LANGLIE-MATTIX	SEVEN RIVERS-QUEEN	SKELLY PENROSE B UNIT	63	8B 23S 37E
CELERO ENERGY LIMITED PARTNERSHIP	LANGLIE-MATTIX	SEVEN RIVERS-QUEEN	SKELLY PENROSE B UNIT	74	8B 23S 37E NW NE
CHEVRON U S A INCORPORATED	TEAGUE NORTH	TUBB	F B DAVIS	8	8C 23S 37E SW NW NE
CELERO ENERGY LIMITED PARTNERSHIP	LANGLIE-MATTIX	SEVEN RIVERS-QUEEN	SKELLY PENROSE B UNIT	44	8C 23S 37E
CHEVRON U S A INCORPORATED	TEAGUE NORTH	TUBB	F B DAVIS	10	8C 23S 37E NE NE NW
CELERO ENERGY LIMITED PARTNERSHIP	LANGLIE-MATTIX	SEVEN RIVERS-QUEEN	SKELLY PENROSE B UNIT	73	8C 23S 37E NE NW
CELERO ENERGY LIMITED PARTNERSHIP	LANGLIE-MATTIX	SEVEN RIVERS-QUEEN	SKELLY PENROSE B UNIT	45	8D 23S 37E
CELERO ENERGY LIMITED PARTNERSHIP	LANGLIE-MATTIX	SEVEN RIVERS-QUEEN	SKELLY PENROSE B UNIT	48	8E 23S 37E
CHEVRON U S A INCORPORATED	TEAGUE NORTH	TUBB	F B DAVIS	9	8F 23S 37E NE SE NW

List of Offset Wells
Stevens "B" No. 16
1650' FSL & 1650' FWL (K)
Section 18, T-23-S, R-37-E
Lea County, NM
Table "MP-2"

Operator Current Name	Field Name	Prod Zone Name	Lease Name	Well Number	Location
CELERO ENERGY LIMITED PARTNERSHIP	LANGLIE-MATTIX	SEVEN RIVERS-QUEEN	SKELLY PENROSE B UNIT	49	8G 23S 37E
CHEVRON U S A INCORPORATED	TEAGUE NORTH	PADDOCK LOWER	F B DAVIS	7	8G 23S 37E NE SW NE
CHEVRON U S A INCORPORATED	TEAGUE NORTH	TUBB	F B DAVIS	7	8G 23S 37E NE SW NE
CHEVRON U S A INCORPORATED	TEAGUE NORTH	DRINKARD	F B DAVIS	7	8G 23S 37E NE SW NE
SKELLY OIL COMPANY	LANGLIE-MATTIX	SEVEN RIVERS-QUEEN	SKELLY PENROSE B UNIT	50	8H 23S 37E
CHEVRON U S A INCORPORATED	TEAGUE	BLINEBRY	F B DAVIS	3	8H 23S 37E SE NE
CHEVRON U S A INCORPORATED	TEAGUE NORTH	DRINKARD-ABO	F B DAVIS	5	8H 23S 37E SE NE
CHEVRON U S A INCORPORATED	TEAGUE NORTH	TUBB	F B DAVIS	5	8H 23S 37E SE NE
CHEVRON U S A INCORPORATED	TEAGUE NORTH	PADDOCK LOWER	F B DAVIS	3	8H 23S 37E SE NE
CELERO ENERGY LIMITED PARTNERSHIP	LANGLIE-MATTIX	SEVEN RIVERS-QUEEN	SKELLY PENROSE B UNIT	55	8I 23S 37E
CELERO ENERGY LIMITED PARTNERSHIP	LANGLIE-MATTIX	SEVEN RIVERS-QUEEN	SKELLY PENROSE B UNIT	56	8L 23S 37E
PERMIAN RESOURCES INCORPORATED	LANGLIE-MATTIX	SEVEN RIVERS-QUEEN	CLIFT	6	8M 23S 37E
CELERO ENERGY LIMITED PARTNERSHIP	LANGLIE-MATTIX	SEVEN RIVERS-QUEEN	SKELLY PENROSE B UNIT	57	8N 23S 37E
OXY USA INC	LANGLIE-MATTIX	SEVEN RIVERS-QUEEN	SKELLY PENROSE B UNIT	58	8O 23S 37E
CELERO ENERGY LIMITED PARTNERSHIP	LANGLIE-MATTIX	SEVEN RIVERS-QUEEN	SKELLY PENROSE B UNIT	59	8P 23S 37E
CHAPARRAL SWD	SWD	SAN ANDRES	LEA	2	17A 23S 37E NE NE
ALPHA TWENTY-ONE PRODUCTION COMPANY	TEAGUE	TUBB	LEA	2	17A 23S 37E NE NE
YARBROUGH OIL L P	LANGLIE-MATTIX	SEVEN RIVERS-QUEEN	E L STEELER	2	17A 23S 37E
CHAPARRAL SWD	SWD	SAN ANDRES	LEA	1	17B 23S 37E
TEXACO PRODUCING INCORPORATED	LANGLIE-MATTIX	SEVEN RIVERS-QUEEN	E L STEELER	1	17B 23S 37E
ALPHA TWENTY-ONE PRODUCTION COMPANY	TEAGUE	BLINEBRY	LEA	1	17B 23S 37E
ALPHA TWENTY-ONE PRODUCTION COMPANY	TEAGUE	DRINKARD	LEA	1	17B 23S 37E
WILDCAT ENERGY LIMITED LIABILITY CORP	LANGLIE-MATTIX	SEVEN RIVERS-QUEEN	LANGLIE MATTIX B 4 PENROSE QUEEN UT	14	17C 23S 37E
WILDCAT ENERGY LIMITED LIABILITY CORP	LANGLIE-MATTIX	SEVEN RIVERS-QUEEN	LANGLIE MATTIX B 4 PENROSE QUEEN UT	3	17C 23S 37E
WILDCAT ENERGY LIMITED LIABILITY CORP	JALMAT	TANSILL-YATES	HUGHES B 4	3	17D 23S 37E
SAMEDAN OIL CORPORATION	JALMAT	TANSILL-YATES	HUGHES B 4	3	17D 23S 37E
SAMEDAN OIL CORPORATION	LANGLIE-MATTIX	SEVEN RIVERS-QUEEN	LANGLIE MATTIX B 4 PENROSE QUEEN SAN	11	17D 23S 37E
WILDCAT ENERGY LIMITED LIABILITY CORP	LANGLIE-MATTIX	SEVEN RIVERS-QUEEN	LANGLIE MATTIX B 4 PENROSE QUEEN UT	7	17E 23S 37E
DUKE OIL & GAS INCORPORATED	LANGLIE-MATTIX	SEVEN RIVERS-QUEEN	LANGLIE MATTIX B 4 PENROSE QUEEN UN	8	17E 23S 37E
WILDCAT ENERGY LIMITED LIABILITY CORP	JALMAT	TANSILL-YATES	HUGHES B 4	8	17E 23S 37E
WILDCAT ENERGY LIMITED LIABILITY CORP	LANGLIE-MATTIX	SEVEN RIVERS-QUEEN	LANGLIE MATTIX B 4 PENROSE QUEEN UT	4	17E 23S 37E
YARBROUGH OIL L P	JALMAT	YATES-SEVEN RIVERS	E L STEELER	8	17G 23S 37E C SW NE
YARBROUGH OIL L P	LANGLIE-MATTIX	SEVEN RIVERS-QUEEN	E L STEELER	8	17G 23S 37E C SW NE
TEXACO PRODUCING INCORPORATED	LANGLIE-MATTIX	SEVEN RIVERS-QUEEN	E L STEELER	3	17H 23S 37E
SAMEDAN OIL CORPORATION	LANGLIE-MATTIX	SEVEN RIVERS-QUEEN	HUGHES FEDERAL	4	17I 23S 37E
YARBROUGH OIL L P	LANGLIE-MATTIX	SEVEN RIVERS-QUEEN	E L STEELER	6	17J 23S 37E
YARBROUGH OIL L P	LANGLIE-MATTIX	SEVEN RIVERS-QUEEN	E L STEELER	5	17K 23S 37E
SKELLY OIL COMPANY	JALMAT	TANSILL-YATES	E L STEELER	7	17L 23S 37E
YARBROUGH OIL L P	LANGLIE-MATTIX	SEVEN RIVERS-QUEEN	E L STEELER	7	17L 23S 37E
YARBROUGH OIL L P	LANGLIE-MATTIX	SEVEN RIVERS-QUEEN	E L STEELER	4	17M 23S 37E
YARBROUGH OIL L P	JALMAT	YATES-SEVEN RIVERS	E L STEELER	4	17M 23S 37E
SAMEDAN OIL CORPORATION	LANGLIE-MATTIX	SEVEN RIVERS-QUEEN	HUGHES FEDERAL	3	17N 23S 37E
BURLESON LEWIS B INCORPORATED	JALMAT	TANSILL-YATES	HUGHES FEDERAL	3	17N 23S 37E
SAMEDAN OIL CORPORATION	JALMAT	TANSILL-YATES	HUGHES B FEDERAL	2	17O 23S 37E
SAMEDAN OIL CORPORATION	LANGLIE-MATTIX	SEVEN RIVERS-QUEEN	HUGHES FEDERAL	2	17O 23S 37E
SAMEDAN OIL CORPORATION	TEAGUE	BLINEBRY	HUGHES B 3	6	17P 23S 37E
SAMEDAN OIL CORPORATION	LANGLIE-MATTIX	SEVEN RIVERS-QUEEN	HUGHES FEDERAL	1	17P 23S 37E
WILDCAT ENERGY LIMITED LIABILITY CORP	LANGLIE-MATTIX	SEVEN RIVERS-QUEEN	LANGLIE MATTIX B 4 PENROSE QUEEN UT	12	18A 23S 37E
CONOCO INCORPORATED	JALMAT	TANSILL-YATES	STEVENS B	1	18B 23S 37E
CONOCO INCORPORATED	LANGLIE-MATTIX	SEVEN RIVERS-QUEEN	STEVENS B	20	18B 23S 37E
CONOCO INCORPORATED	JALMAT	TANSILL-YATES	STEVENS B 18 COM	1	18F 23S 37E
WILDCAT ENERGY LIMITED LIABILITY CORP	JALMAT	TANSILL-YATES	HUGHES B 4	5	18G 23S 37E
DUKE OIL & GAS INCORPORATED	LANGLIE-MATTIX	SEVEN RIVERS-QUEEN	LANGLIE MATTIX B 4 PENROSE QUEEN UN	5	18G 23S 37E
WILDCAT ENERGY LIMITED LIABILITY CORP	JALMAT	TANSILL-YATES	LANGLIE MATTIX B 4 PENROSE QUEEN UT	2	18H 23S 37E
WILDCAT ENERGY LIMITED LIABILITY CORP	LANGLIE-MATTIX	SEVEN RIVERS-QUEEN	LANGLIE MATTIX B 4 PENROSE QUEEN UT	2	18H 23S 37E
WILDCAT ENERGY LIMITED LIABILITY CORP	LANGLIE-MATTIX	SEVEN RIVERS-QUEEN	LANGLIE MATTIX B 4 PENROSE QUEEN UT	1	18H 23S 37E
ATLANTIC RICHFIELD COMPANY THE	LANGLIE-MATTIX	SEVEN RIVERS-QUEEN	JAMES H DUTHIE WN BATTERY 2	3	18I 23S 37E
BP AMERICA PRODUCTION COMPANY	LANGLIE-MATTIX	SEVEN RIVERS-QUEEN	DUTHIE ANDREWS WN	6	18I 23S 37E
BP AMERICA PRODUCTION COMPANY	JALMAT	TANSILL-YATES	DUTHIE ANDREWS WN COM	1	18J 23S 37E
CONOCO INCORPORATED	JALMAT	TANSILL-YATES	STEVENS B	16	18K 23S 37E
BP AMERICA PRODUCTION COMPANY	LANGLIE-MATTIX	SEVEN RIVERS-QUEEN	DUTHIE ANDREWS FEDERAL	1	18O 23S 37E
BP AMERICA PRODUCTION COMPANY	LANGLIE-MATTIX	SEVEN RIVERS-QUEEN	DUTHIE ANDREWS WN	5	18P 23S 37E
BP AMERICA PRODUCTION COMPANY	JALMAT	TANSILL-YATES	E L STEELER WN	4	19 23S 37E
EVANS OIL COMPANY INCORPORATED	LANGLIE-MATTIX	SEVEN RIVERS-QUEEN	HUGHES B 6	10	19 23S 37E
GRUY PETROLEUM MANAGEMENT COMPANY	JALMAT	TANSILL-YATES	HUGHES B-6	12	19 23S 37E
BP AMERICA PRODUCTION COMPANY	JALMAT	TANSILL-YATES	E L STEELER WN	3	19 23S 37E
GRUY PETROLEUM MANAGEMENT COMPANY	JALMAT	TANSILL-YATES	HUGHES B-6	11	19 23S 37E
ATLANTIC RICHFIELD COMPANY THE	LANGLIE-MATTIX	SEVEN RIVERS-QUEEN	JAMES H DUTHIE WN BATTERY 2	2	19A 23S 37E
BP AMERICA PRODUCTION COMPANY	LANGLIE-MATTIX	SEVEN RIVERS-QUEEN	DUTHIE ANDREWS WN	4	19B 23S 37E
BP AMERICA PRODUCTION COMPANY	JALMAT	TANSILL-YATES	DUTHIE ANDREWS WN	4	19B 23S 37E
SAMEDAN OIL CORPORATION	JALMAT	TANSILL-YATES	HUGHES B	1	19C 23S 37E
BURLINGTON RESOURCES O&G CO LP	LANGLIE-MATTIX	SEVEN RIVERS-QUEEN	HUGHES B 6	11	19D 23S 37E
BP AMERICA PRODUCTION COMPANY	JALMAT	TANSILL-YATES	DUTHIE ANDREWS WN COM	7	19G 23S 37E SW NE
HENDRIX JOHN H CORPORATION	LANGLIE-MATTIX	SEVEN RIVERS-QUEEN	STEELER	2	19I 23S 37E
BP AMERICA PRODUCTION COMPANY	LANGLIE-MATTIX	SEVEN RIVERS-QUEEN	E L STEELER WN	5	19J 23S 37E
BP AMERICA PRODUCTION COMPANY	JALMAT	TANSILL-YATES	E L STEELER WN	5	19J 23S 37E
SINCLAIR OIL CORPORATION	LANGLIE-MATTIX	SEVEN RIVERS-QUEEN	E L STEELER WN	3	19L 23S 37E
ARCO OIL & GAS CORPORATION	LANGLIE-MATTIX	SEVEN RIVERS-QUEEN	E L STEELER WN	4	19M 23S 37E
ARCO OIL & GAS CORPORATION	JALMAT	TANSILL-YATES	E L STEELER WN	2	19N 23S 37E
ARCO OIL & GAS CORPORATION	LANGLIE-MATTIX	SEVEN RIVERS-QUEEN	E L STEELER WN	2	19N 23S 37E
HENDRIX JOHN H CORPORATION	LANGLIE-MATTIX	SEVEN RIVERS-QUEEN	STEELER	1	19O 23S 37E
ARCO OIL & GAS CORPORATION	LANGLIE-MATTIX	SEVEN RIVERS-QUEEN	E L STEELER WN	1	19P 23S 37E
ATLANTIC RICHFIELD COMPANY THE	JALMAT	TANSILL-YATES	E L STEELER WN	1	19P 23S 37E
FULFUR OIL & CATTLE COMPANY LLC	LANGLIE-MATTIX	SEVEN RIVERS-QUEEN	J C JOHNSON	6	20A 23S 37E
GETTY OIL COMPANY	LANGLIE-MATTIX	SEVEN RIVERS-QUEEN	J C JOHNSON BATTERY 2	2	20A 23S 37E
SKELLY OIL COMPANY	TEAGUE	BLINEBRY	J C JOHNSON	6	20A 23S 37E
PENROC OIL CORPORATION	LANGLIE-MATTIX	SEVEN RIVERS-QUEEN	J C JOHNSON BATTERY 2	5	20C 23S 37E NE NW
FULFUR OIL & CATTLE COMPANY LLC	JALMAT	TANSILL-YATES	J C JOHNSON	5	20C 23S 37E NE NW
KELT OIL & GAS INCORPORATED	LANGLIE-MATTIX	SEVEN RIVERS-QUEEN	J C JOHNSON BATTERY 2	4	20C 23S 37E C NW NW
FULFUR OIL & CATTLE COMPANY LLC	JALMAT	TANSILL-YATES	J C JOHNSON	4	20D 23S 37E C NW NW
FULFUR OIL & CATTLE COMPANY LLC	LANGLIE-MATTIX	SEVEN RIVERS-QUEEN	J C JOHNSON	1	20E 23S 37E
FULFUR OIL & CATTLE COMPANY LLC	LANGLIE-MATTIX	SEVEN RIVERS-QUEEN	J C JOHNSON	3	20H 23S 37E C SE NE
RESLER & SHELTON	LANGLIE-MATTIX	SEVEN RIVERS-QUEEN	STEELER B	1	20I 23S 37E
ARCH PETROLEUM INCORPORATED	LANGLIE-MATTIX	SEVEN RIVERS-QUEEN	RESLER A	1	20K 23S 37E NW NE SW
WESTBROOK OIL CORPORATION	JALMAT	TANSILL-YATES	STEELER A	1	20L 23S 37E
WESTBROOK OIL CORPORATION	LANGLIE-MATTIX	SEVEN RIVERS-QUEEN	STEELER A	1	20L 23S 37E
WESTBROOK OIL CORPORATION	LANGLIE-MATTIX	SEVEN RIVERS-QUEEN	STEELER A	4	20M 23S 37E
WESTBROOK OIL CORPORATION	LANGLIE-MATTIX	SEVEN RIVERS-QUEEN	STEELER A	3	20N 23S 37E
ARCH PETROLEUM INCORPORATED	LANGLIE-MATTIX	SEVEN RIVERS-QUEEN	RESLER B	2	20O 23S 37E C SW SE
ARCH PETROLEUM INCORPORATED	LANGLIE-MATTIX	SEVEN RIVERS-QUEEN	RESLER B	3	20P 23S 37E C SE SE

Well Pad Dimensions
Stevens "B" #16
Unit K, Sec. 18, T-23-S, R-37-E
Lea County, NM
Exhibit "MP-3"

Doyle Hartman
Multi-Point Surface Use
and Operations Plan



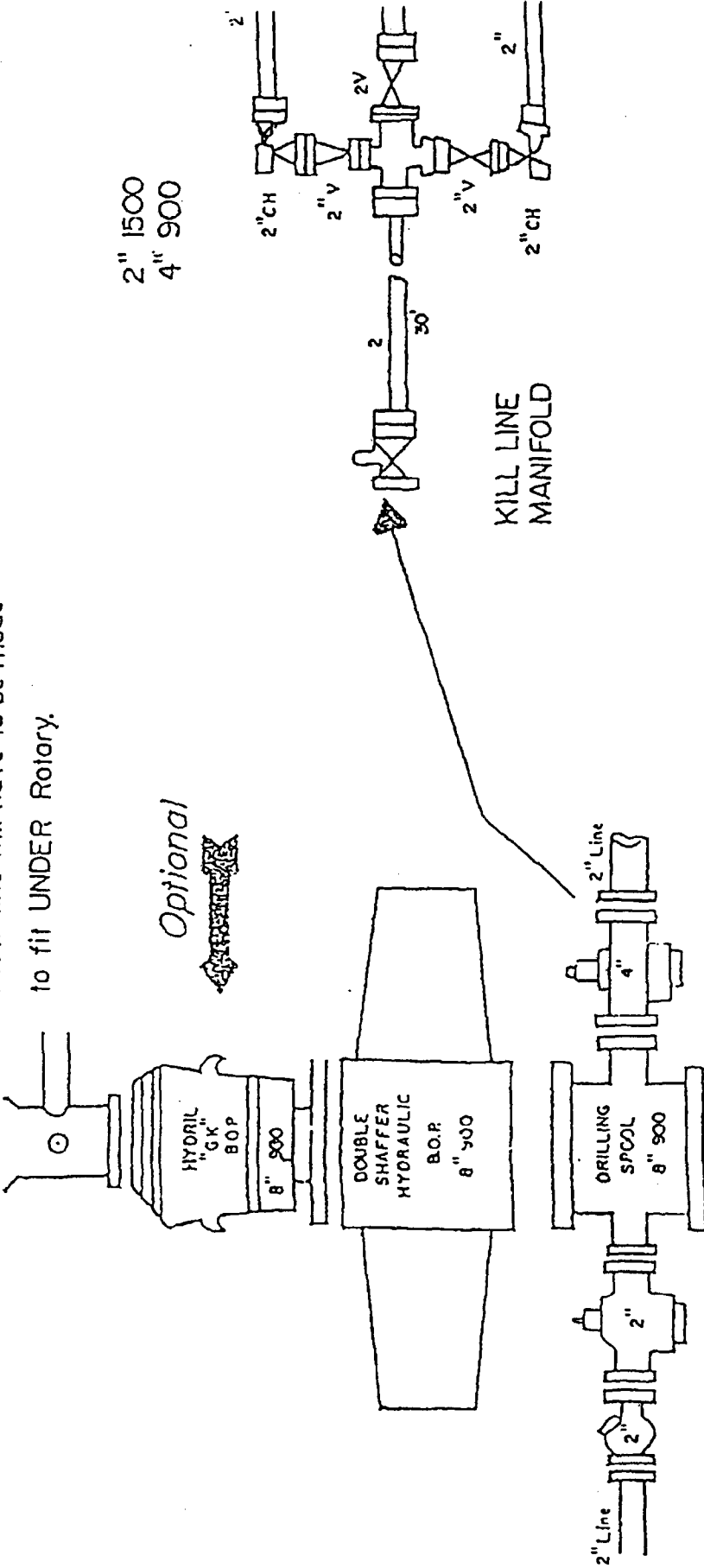
~ 175'

~ 200'

BOP & Choke Manifold Diagram
Stevens "B" #16
Unit K, Sec. 18, T-23-S, R-37-E
Lea County, NM
Exhibit "MP-4"

ASE ROTARY TABLE

Flow line will have to be made
to fit UNDER Rotary.



Doyle Hartman
Multi-Point Surface Use
and Operations Plan

MULTI-POINT SURFACE USE AND OPERATIONS PLAN

DOYLE HARTMAN
Stevens "B" No. 16
1650' FSL & 1650' FWL (Unit K)
Section 18, T-23-S, R-37-E
Lea Co., New Mexico

This plan is submitted with our Application for Permit to Drill (Re-enter) [3160-3] and Necessary Remediation Procedure for the previously drilled Stevens "B" No. 16 Jalmat gas well. The purpose of the plan is to describe the location of the well, the proposed construction activities and operations plan, the magnitude of the necessary surface disturbance involved, and the procedures to be followed in rehabilitating the surface after completion of the operation so that a complete appraisal can be made of the environmental effects associated with the proposed operation.

1. EXISTING ROADS:

Exhibit "MP-1" is a portion of a United States Geological Survey Topographic Map covering a part of T-23-S, R-36-E & R-37-E, Lea County, New Mexico which shows the location of the Stevens "B" No. 16 well. Also included on Exhibit "MP-1" are all nearby New Mexico State Highways as well as all existing roads within a one mile radius of the proposed well site and the planned access road.

To reach the previously drilled Stevens "B" No. 16 well from Jal, use the following directions:

1. From the intersection of Hwy 128 and Hwy 18, drive North on Hwy 18 for approximately 10 to 11 miles.
2. Turn West (left) at the old Carbon Black Plant and drive across first set of railroad tracks, turn right and drive 0.3 miles over second set of railroad tracks.
3. Turn left and drive 0.2 miles thru cattle guard.
4. Turn right and drive 0.2 miles to "Y" in the road.
5. Stay to the right (heading Northwest) and drive 0.5 miles.
6. Turn left (South) and drive 0.3 miles to old location w/ dry hole marker.

2. **PLANNED ACCESS ROADS:**

- A. **Length and Width:** No new access road will be required. The existing road may be required to be widened to twelve (12) feet wide along the route.
- B. **Surface Material:** Four inches of caliche, water compacted and graded.
- C. **Maximum Grade:** Three (3) percent.
- D. **Turnouts:** No new turnouts required.
- E. **Drainage Design:** The existing road will be graded to have a drop of six (6) inches from the center line to each edge of the road.
- F. **Culverts:** None required.
- G. **Cuts and Fills:** None required.
- H. **Cattle guards:** None required.

3. **LOCATION OF EXISTING WELLS:**

All existing wells within a one-mile radius of the Stevens "B" No. 16 well are shown on Exhibit "MP-2" and detailed in "Table MP-2".

4. **LOCATION OF EXISTING AND PROPOSED PRODUCTION FACILITIES:**

- A. **Existing Facilities:** None.
- B. **Proposed Facilities:** Since it is anticipated that the proposed well will be completed as a gas well with possible oil production, the equipment required will be a pumping unit, gas separator, water tank, gas metering, oil storage tanks, heater treater, powerline and flowline.

5. **LOCATION AND TYPE OF WATER SUPPLY:**

Fresh and treated water for the necessary remediation work will be trucked by Rapid Transport from the Jal Country Club in Jal, New Mexico.

6. **SOURCE OF CONSTRUCTION MATERIALS:**

Caliche for surfacing the road and well pad will be obtained from a pit in the N/2 Section 20, T-23-S, T-37-E.

7. **METHODS OF HANDLING WASTE DISPOSAL:**

- A. **Drill Cuttings:** Drill cuttings will be disposed of in 500 BBL blowdown tank.
- B. **Drilling Fluids:** Drillings fluids will be allowed to evaporate in drilling pits until the pits are dry. While the pits are in the evaporation stage, they will be adequately fenced so as not to be a hazard to people and livestock.

8. **ANCILLARY FACILITIES:**

None Required.

9. **WELL SITE LAYOUT:**

- A. **Well Site Boundaries:** The boundaries of the well site have been staked and flagged.
- B. **Rig Components:** Exhibit "MP-3" shows the relative location and approximate dimensions of the well pad, plastic-lined earth pit, reverse pit, and location of major rig components. A BOP diagram is shown on Exhibit "MP-4".
- C. **Well Site Leveling:** Only minor leveling of the well site will be required. No cuts or fills will be necessary.
- D. **Pit Lining:** The earth pit will be lined with 4-mil cross-laminated black poly lining material.

10. **PLANS FOR RESTORATION OF THE SURFACE:**

- A. **Equipment Removal:** After the finishing of drilling and/or completion operations, all drilling equipment and other material not needed for routine operations will be removed from the well site. Pits will be filled and the location cleaned of all trash and junk thus leaving the well site in an aesthetically pleasing condition.
- B. **Unguarded Pits:** Any unguarded pits containing fluid will be fenced until they are back-filled.
- C. **Well Abandonment:** Upon abandoning the proposed well, the surface restoration will be in accordance with the agreement with the surface owner. As stated above, the pits will be filled and the location well be cleaned. The pit area, well pad, and all unneeded access roads will be ripped up to promote vegetation. Rehabilitation will be accomplished within 90 days after abandonment.

11. **OTHER INFORMATION:**

- A. **Topography:** The well site is located just above the base of the Caprock. Along the edge of the Caprock, the surface slopes to the South and Southeast at the rate of 100 feet/mile. At the base of the Caprock, the land slopes to the southeast at a more gentle rate.
- B. **Soil:** The surface is an area where sediments are predominantly orange-tan sand. The soils are shallow and are underlain by caliche.
- C. **Flora and Fauna:** The vegetation cover is generally sparse and consists of mesquite, serus oak, sand bur, prickly pear, yucca and perennial native range grasses. Wildlife in the area is typical of semi-arid desert land and includes coyotes, rabbits, rodents, reptiles, doves, and quail.
- D. **Pond and Streams:** There are no rivers, streams, ponds, or lakes in the area.
- E. **Residences and Other Structures:** The nearest occupied dwelling is a house located in the NW/4 NE/4 of Section 35, T-23-S, R-36-E. The closest fresh water well is located in the SW/4 SE/4 of Section 7, T-23-S, R-37-E.
- F. **Archeological, Historical, and Cultural Sites:** None observed in the area.
- G. **Land Use:** Grazing, bird hunting and oil field operations.
- H. **Surface Ownership:** The well is situated on surface owned by B. W. Dinwiddie.

12. **OPERATOR'S REPRESENTATIVES:**

The Field Representatives responsible for assuring compliance with the approved Surface Use and Operations Plan are as follows:

Don Mashburn
P.O. Box 10426
Midland, Texas 79702
Office Phone: (432) 684-4011
Mobile Phone: (432) 661-9556
Home Phone: (432) 699-0043

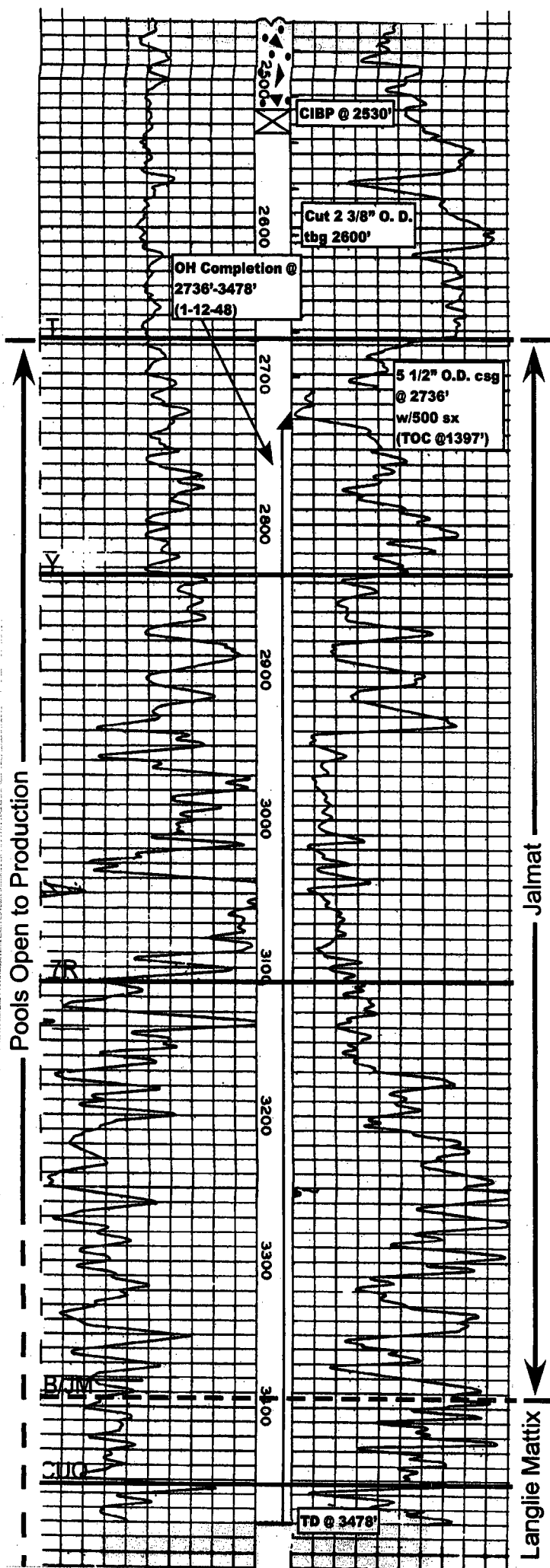
Rick Wilson
Drawer M
Jal, New Mexico 88252
Office Phone: (505) 395-3367
Mobile Phone: (505) 661-9558

13. **CERTIFICATION:**

I hereby certify that I, or persons under my direct supervision, have inspected the proposed drill site and access route; that I am familiar with the conditions which presently exist; that the statements made in plan are, to the best of my knowledge true and correct; and, that the work associated with the operation proposed herein will be performed by Doyie Hartman, Oil Operator and his contractors and sub-contractors in conformity with this plan and the terms and conditions under which it is approved.

4/5/05
Date

Steve Hartman
Steve Hartman, Engineer



COMPANY Conoco

WELL Stevens "B" No. 16
(Stevens "B-18" No. 2)

FIELD Jalmit

LOCATION 1650' FSL & 1650' FWL (K)
Section 18, T-23-S, R-37-E

COUNTY Lea

STATE New Mexico

ELEVATIONS: KB
DF 3356'
KBC GL

COMPLETION RECORD

SPUD DATE 12-19-47 COMP DATE 1-12-48

TD 3478' PBTD 3478' (Orig)

CSG RECORD 7 5/8" @ 1209' w/500 sx (Circ)
5 1/2" @ 2736' w/500 sx (TOC @ 1397')

COMP INTRVL OH 2736'-3478'

STIMULATION Natural

WELL TEST F/45,400 MCFPD (1-12-48)

GOR GR

TP CP SI 1290 psi

CHOKE TBG

REMARKS AND SUBSEQUENT HISTORY

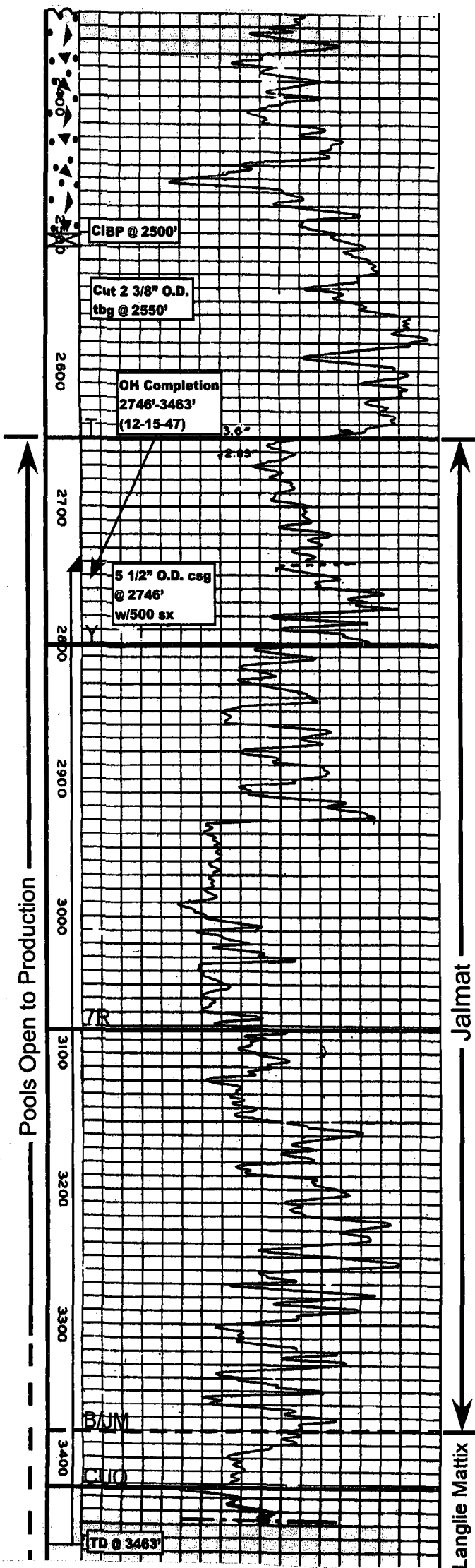
12-18-59: Ran and landed 2 3/8" O.D. tbg at 3389'.

5-18-73 to 5-24-73: Ran free point. Found 2 3/8" O.D. tbg stuck at 2815'. Cut 2 3/8" O.D. tbg at 2650'. Fished remainder of 2 3/8" O.D. tbg. CO bridges and 20' of fill. Landed 2 3/8" O.D. tbg at 3410'. F/1000 MCFPD (2736'-3478').

9-16-96 to 9-18-96: Cut 2 3/8" O.D. tbg at 2600'. Set CIBP at 2530' w/25 sx cmt cap (est TOC at 2280'). Spotted 25 sx plug at 1120'-1360'. Spotted 70 sx cmt plug from 0' to 350'. Cut off wellhead. Installed dry hole marker. Well P&A'd.

Note: It is proposed to DO and CO to 2500', fish 5 1/2" CIBP and 2 3/8" O.D. tbg, CO to 3478', set 4 1/2" O.D. FJL w/1400 sx, perf original completion interval, acidize, and frac.

K-18-23S-37E



COMPANY Conoco

WELL Stevens "B" No. 15
(Stevens "B-18" No. 1)

FIELD Jalmat

LOCATION 1650' FNL & 1650' FWL (F)
Section 18, T-23-S, R-37-E

COUNTY Lea

STATE New Mexico

ELEVATIONS: KB
DF 3354'
KBC GL 3349'

COMPLETION RECORD

SPUD DATE 11-23-47 COMP DATE 12-15-47

TD 3463' PBTD 3463' (Orig)

CSG RECORD 7 5/8" @ 1219' w/550 sx
5 1/2" @ 2746' w/500 sx

COMP INTRVL OH: 2746'-3463'

STIMULATION Natural

WELL TEST F/13,800 MCFPD (12-17-47)

GOR GR

TP CP

CHOKE TBG

REMARKS AND SUBSEQUENT HISTORY

12-15-59: Ran and set 2 3/8" O.D. tbg at 3268'.

2-23-94 to 3-1-94: CO to 3420'. A/500. Set 2 3/8" O.D. tbg at 3270'. Returned to production.

12-30-94 to 1-3-95: Landed 2 3/8" O.D. tbg at 2827'. Installed pumping equipment. POP.

9-19-96 to 9-21-96: Found 2 3/8" O.D. tbg stuck at 2575'. Cut 2 3/8" O.D. tbg at 2550'. Set CIBP at 2500' w/25 sx cmt cap (est top of cmt at 2250'). Perf'd 5 1/2" O.D. csg at 1275'. Spotted 25 sx plug from 1135'-1375'. Perf'd 5 1/2" O.D. csg at 350'. Sqz'd w/75 sx down 5 1/2" O.D. csg and out 7 5/8" O.D. csg. Cut off wellhead. Installed dryhole marker. Well P&A'd.

F-18-23S-37E

SENDER: COMPLETE THIS SECTION

- Complete items 1, 2, and 3. Also complete item 4 if Restricted Delivery is desired.
- Print your name and address on the reverse so that we can return the card to you.
- Attach this card to the back of the mailpiece, or on the front if space permits.

1. Article Addressed to:

Roca Production, Inc.
P.O. Box 10139
Midland, Texas 79702

2. Article Number (Copy from service label)

7001 1140 0002 8323 2213

PS Form 3811, July 1999

Domestic Return Receipt

102595-99-M-1789

COMPLETE THIS SECTION ON DELIVERY

A. Received by (Please Print Clearly)

B. Date of Delivery

C. Signature

X

☐ Agent☐ Addressee

D. Is delivery address different from item 1?

☐ Yes

If YES, enter delivery address below:

☐ No

3. Service Type

☐ Certified Mail☐ Express Mail☐ Registered☐ Return Receipt for Merchandise☐ Insured Mail☐ C.O.D.

4. Restricted Delivery? (Extra Fee)

☐ YesPS Form 3800, January 2001
See Reverse for Instructions

City, State, ZIP+4

Midland, Texas 79702

Street, Apt. No.,
or PO Box No.

P.O. Box 10139

Sent To

Roca Production, Inc.

Total Postage & Fees

\$ 5.34

Restricted Delivery Fee
(Endorsement Required)Return Receipt Fee
(Endorsement Required)

1.75

Certified Fee

2.30

Postage

\$ 1.29

OFFICIAL USE

(Domestic Mail Only: No Insurance Coverage Provided)

CERTIFIED MAIL RECEIPT

U.S. Postal Service

Roca Production, Inc.
P.O. Box 10139
Midland, Texas 79702

SENDER: COMPLETE THIS SECTION

- Complete items 1, 2, and 3. Also complete item 4 if Restricted Delivery is desired.
- Print your name and address on the reverse so that we can return the card to you.
- Attach this card to the back of the mailpiece, or on the front if space permits.

1. Article Addressed to:

Mission Resources, Inc.
1331 Lamar, Suite 1455
Houston, Texas 77010

COMPLETE THIS SECTION ON DELIVERY

A. Received by (Please Print Clearly) B. Date of Delivery

C. Signature ☒ Agent
☒ Addressee

D. Is delivery address different from item 1? ☐ Yes
If YES, enter delivery address below: ☐ No

3. Service Type
☒ Certified Mail ☐ Express Mail
☐ Registered ☐ Return Receipt for Merchandise
☐ Insured Mail ☐ C.O.D.

4. Restricted Delivery? (Extra Fee) ☐ Yes

2. Article Number (Copy from service label)

7001 1140 0002 8323 2169

PS Form 3811, July 1999

Domestic Return Receipt

102595-99-M-1789

Mission Resources, Inc.
1331 Lamar, Suite 1455
Houston, Texas 77010

PS Form 3800, January 2001 See Reverse for Instructions

Sent To
Mission Resources, Inc.
Street, Apt. No.,
or PO Box No. 1331 Lamar, Suite 1455
City, State, ZIP+4 Houston, Texas 77010

Postage	\$ 1.29
Certified Fee	2.30
Return Receipt Fee (Endorsement Required)	1.75
Restricted Delivery Fee (Endorsement Required)	
Total Postage & Fees	\$ 5.34

Postmark Here

OFFICIAL USE

7001 1140 0002 8323 2169
7001 1140 0002 8323 2169

U.S. Postal Service
CERTIFIED MAIL RECEIPT
(Domestic Mail Only; No Insurance Coverage Provided)

SENDER: COMPLETE THIS SECTION

- Complete items 1, 2, and 3. Also complete item 4 if Restricted Delivery is desired.
- Print your name and address on the reverse so that we can return the card to you.
- Attach this card to the back of the mailpiece, or on the front if space permits.

1. Article Addressed to:

Gruy Petroleum Management Co.
3300 N. "A", Building 8, Suite 120
Midland, Texas 79705

COMPLETE THIS SECTION ON DELIVERY

A. Received by (Please Print Clearly) B. Date of Delivery

C. Signature

X

☐ Agent
☐ Addressee

 D. Is delivery address different from item 1? ☐ Yes
 If YES, enter delivery address below: ☐ No

3. Service Type

☒ Certified Mail ☐ Express Mail
☐ Registered ☐ Return Receipt for Merchandise
☐ Insured Mail ☐ C.O.D.
4. Restricted Delivery? (Extra Fee) ☐ Yes

2. Article Number (Copy from service label)

7001 1140 0002 8323 2176

PS Form 3811, July 1999

Domestic Return Receipt

102595-99-M-1789

Gruy Petroleum Management Co.
3300 N. "A", Building 8, Suite 120
Midland, Texas 79705

DOY
P.
MIDLA

PS Form 3800, January 2001 See Reverse for Instructions

Sent To Gruy Petroleum Management Co.
Street, Apt. No.: 3300 N. "A", Building 8, Suite 120
City, State, ZIP+4: Midland, Texas 79705

Postage	\$ 1.29
Certified Fee	2.30
Return Receipt Fee (Endorsement Required)	1.75
Restricted Delivery Fee (Endorsement Required)	
Total Postage & Fees	\$ 5.34

OFFICIAL USE

U.S. Postal Service
CERTIFIED MAIL RECEIPT
(Domestic Mail Only: No Insurance Coverage Provided)

7001 1140 0002 8323 2176
7001 1140 0002 8323 2176

SENDER: COMPLETE THIS SECTION

- Complete items 1, 2, and 3. Also complete item 4 if Restricted Delivery is desired.
- Print your name and address on the reverse so that we can return the card to you.
- Attach this card to the back of the mailpiece, or on the front if space permits.

1. Article Addressed to:

BP America
501 Westlake Park Boulevard
Houston, Texas 77079

2. Article Number (Copy from service label)

7001 1140 0002 8323 2190

PS Form 3811, July 1999

Domestic Return Receipt

102595-88-66-M-1789

COMPLETE THIS SECTION ON DELIVERY

A. Received by (Please Print Clearly) B. Date of Delivery

C. Signature

X

☐ Agent
☐ Addressee

D. Is delivery address different from item 1?

If YES, enter delivery address below:

☐ Yes
☐ No

3. Service Type

☒ Certified Mail ☐ Express Mail
☐ Registered ☐ Return Receipt for Merchandise
☐ Insured Mail ☐ C.O.D.

4. Restricted Delivery? (Extra Fee)

☐ Yes

BP America
501 Westlake Park Boulevard
Houston, Texas 77079

PS Form 3800, January 2001 See Reverse for Instructions

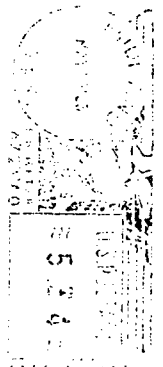
Sent to
BP America
501 Westlake Park Boulevard
Houston, Texas 77079
City, State, ZIP+4

Postage	\$ 1.29
Certified Fee	2.30
Return Receipt Fee	1.75
Restricted Delivery Fee	
Total Postage & Fees	\$ 5.34

OFFICIAL USE

U.S. Postal Service
CERTIFIED MAIL RECEIPT
(Domestic Mail Only; No Insurance Coverage Provided)

7001 1140 0002 8323 2190



SENDER: COMPLETE THIS SECTION

- Complete items 1, 2, and 3. Also complete item 4 if Restricted Delivery is desired.
- Print your name and address on the reverse so that we can return the card to you.
- Attach this card to the back of the mailpiece, or on the front if space permits.

1. Article Addressed to:

Wildcat Energy, LLC
P.O. Box 13323
Odessa, Texas 79768

COMPLETE THIS SECTION ON DELIVERY

A. Received by (Please Print Clearly) B. Date of Delivery

C. Signature

X

☐ Agent
☐ Addressee

D. Is delivery address different from item 1? ☐ Yes
If YES, enter delivery address below: ☐ No

3. Service Type

☒ Certified Mail ☐ Express Mail
☐ Registered ☐ Return Receipt for Merchandise
☐ Insured Mail ☐ C.O.D.

4. Restricted Delivery? (Extra Fee) ☐ Yes

2. Article Number (Copy from service label)

7001 1140 0002 8323 2206

PS Form 3811, July 1999

Domestic Return Receipt

102595-99-M-1789

Wildcat Energy, LLC
P.O. Box 13323
Odessa, Texas 79768

PS Form 3800, January 2001 See Reverse for Instructions

Sent To
Wildcat Energy, LLC
P.O. Box 13323
Odessa, Texas 79768
City, State, ZIP+4

Postage	\$ 1.29
Certified Fee	2.30
Return Receipt Fee (Endorsement Required)	1.75
Restricted Delivery Fee (Endorsement Required)	
Total Postage & Fees	\$ 5.34

OFFICIAL USE

U.S. Postal Service
CERTIFIED MAIL RECEIPT
(Domestic Mail Only; No Insurance Coverage Provided)

7001 1140 0002 8323 2206

CERTIFIED MAIL

SENDER: COMPLETE THIS SECTION

- Complete items 1, 2, and 3. Also complete item 4 if Restricted Delivery is desired.
- Print your name and address on the reverse so that we can return the card to you.
- Attach this card to the back of the mailpiece, or on the front if space permits.

1. Article Addressed to:

John H. Hendrix
John H. Hendrix Corporation
P.O. Box 3040
Midland, TX 79702

2. Article Number (Copy from service label)

7001 1140 0002 8323 2183

PS Form 3811, July 1999

Domestic Return Receipt

102595-99-M-1789

COMPLETE THIS SECTION ON DELIVERY

A. Received by (Please Print Clearly)

B. Date of Delivery

C. Signature

X

☐ Agent☐ Addressee

D. Is delivery address different from item 1?

☐ Yes

If YES, enter delivery address below:

☐ No

3. Service Type

☒ Certified Mail☐ Express Mail☐ Registered☐ Return Receipt for Merchandise☐ Insured Mail☐ C.O.D.

4. Restricted Delivery? (Extra Fee)

☐ Yes

PS Form 3800, January 2001 See Reverse for Instructions

City, State, ZIP+4[®] Midland, TX 79702

P.O. Box No. P.O. Box 3040

Street, Apt. No., John H. Hendrix Corporation

Sent to John H. Hendrix

Postage \$ 1.29

Certified Fee 2.30

Return Receipt Fee 1.75

Restricted Delivery Fee 5.34

Total Postage & Fees

Postmark Here

OFFICIAL USE

U.S. Postal Service

CERTIFIED MAIL RECEIPT

(Domestic Mail Only: No Insurance Coverage Provided)

John H. Hendrix
John H. Hendrix Corporation
P.O. Box 3040
Midland, TX 79702

7001 1140 0002 8323 2183
7001 1140 0002 8323 2183

