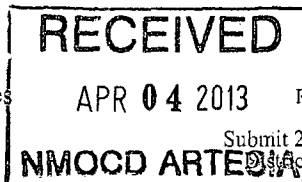


District I
1625 N. French Dr., Hobbs, NM 88240
District II
1301 W. Grand Avenue, Artesia, NM 88210
District III
1000 Rio Brazos Road, Aztec, NM 87410
District IV
1220 S. St. Francis Dr., Santa Fe, NM 87505

State of New Mexico
Energy Minerals and Natural Resources
Oil Conservation Division
1220 South St. Francis Dr.
Santa Fe, NM 87505



Form C-141
Revised October 10, 2003
Submit 2 Copies to appropriate District Office in accordance with Rule 116 on back side of form

Release Notification and Corrective Action

OPERATOR

☒ Initial Report ☐ Final Report

Name of Company	Chevron Delaware Basin 4323	Contact	Bradley Blevins
Address	PO Box 190, Hobbs, NM 88241	Telephone No.	(575) 391-1462
Facility Name	Culebra Bluff SWD Water Transfer Line	Facility Type	SWD
Surface Owner	Mineral Owner	Lease No.	

LOCATION OF RELEASE

Unit Letter	Section	Township	Range	Feet from the	North/South Line	Feet from the	East/West Line	County
L	36	22S	28E					Eddy County, NM

E 2 23 28^E Latitude N 32.34734° Longitude W 104.04839°

API 30-015-2275

NATURE OF RELEASE

Type of Release	Produced Water	Volume of Release	77 bbls	Volume Recovered	0 bbls
Source of Release	Hole in 3" ball valve in the transition	Date and Hour of Occurrence	03/25/2013 @ 12:30 pm	Date and Hour of Discovery	
Was Immediate Notice Given?	<input type="checkbox"/> Yes <input checked="" type="checkbox"/> No <input type="checkbox"/> Not Required	If YES, To Whom?			
By Whom?		Date and Hour			
Was a Watercourse Reached?	<input type="checkbox"/> Yes <input checked="" type="checkbox"/> No	If YES, Volume Impacting the Watercourse.			

If a Watercourse was Impacted, Describe Fully.*

Describe Cause of Problem and Remedial Action Taken.*

A hole in the 3" ball valve in the transition caused 77 bbls of produced water to leak onto the ground. No fluids were recovered and the valve was repaired.

Describe Area Affected and Cleanup Action Taken.*

The area affected was approximately 40' x 450'. A hole in the 3" ball valve in the transition caused 77 bbls of produced water to leak onto the ground. No fluids were recovered and the valve was repaired. Further remediation will be performed in accordance with a NMOCD-approved remediation plan.

I hereby certify that the information given above is true and complete to the best of my knowledge and understand that pursuant to NMOCD rules and regulations all operators are required to report and/or file certain release notifications and perform corrective actions for releases which may endanger public health or the environment. The acceptance of a C-141 report by the NMOCD marked as "Final Report" does not relieve the operator of liability should their operations have failed to adequately investigate and remediate contamination that pose a threat to ground water, surface water, human health or the environment. In addition, NMOCD acceptance of a C-141 report does not relieve the operator of responsibility for compliance with any other federal, state, or local laws and/or regulations.

OIL CONSERVATION DIVISION

Signature: <u>Bradley Blevins</u>	Approved by District Supervisor:	
Printed Name: Bradley Blevins	Approval Date:	Expiration Date:
Title: EHS Specialist	Conditions of Approval:	
E-mail Address: Bradley.blevins@chk.com	Remediation per OCD Rule & Guidelines. SUBMIT REMEDIATION PROPOSAL NO LATER THAN:	
Date: 4/3/13	Phone: (575) 391-1462	Attached <input type="checkbox"/>

* Attach Additional Sheets If Necessary

May 17, 2013

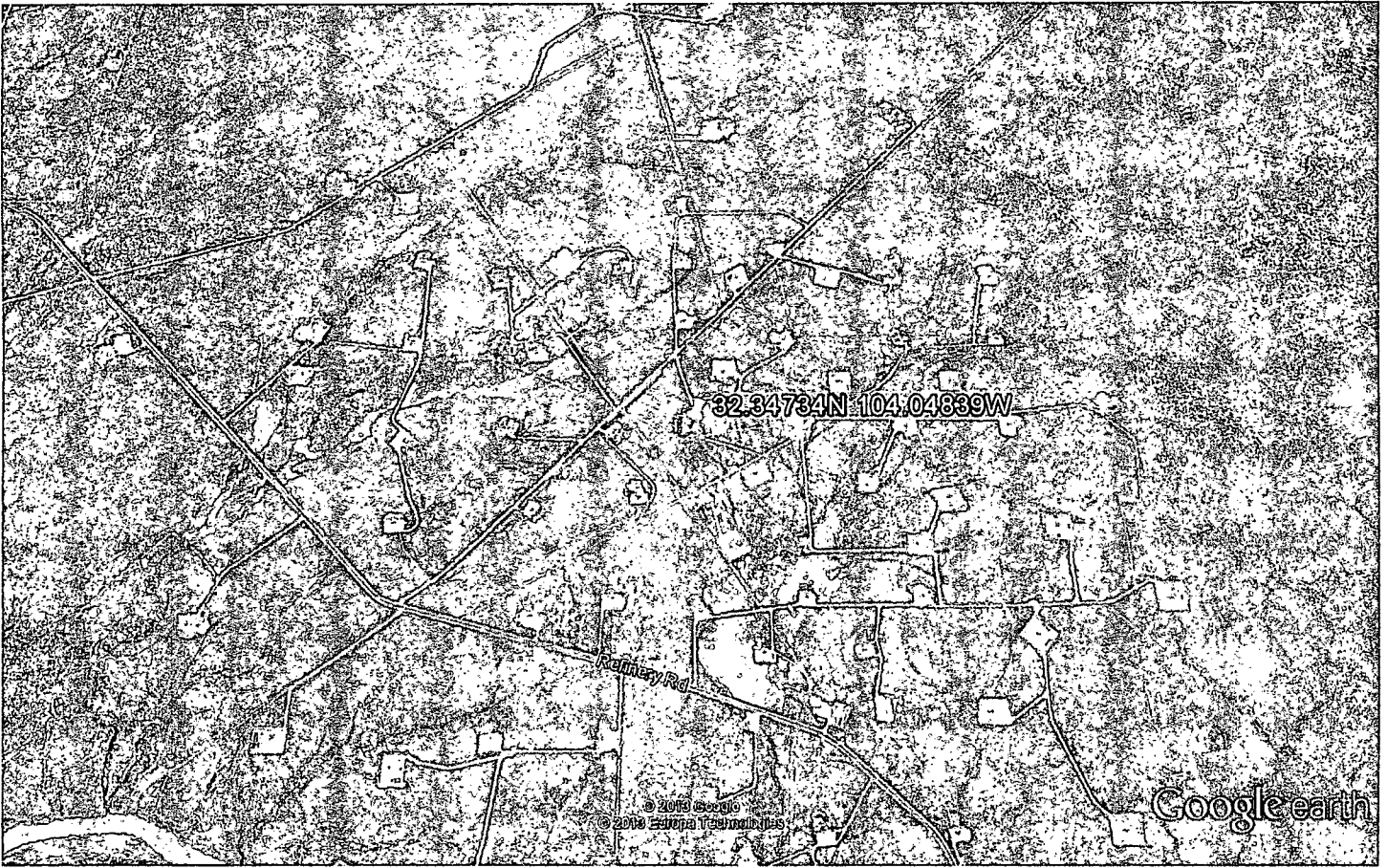
2RP-1619

Bratcher, Mike, EMNRD

From: Kathy Purvis <kathy@bbcinternational.com>
Sent: Wednesday, April 03, 2013 4:27 PM
To: Bratcher, Mike, EMNRD
Cc: 'Bradley Blevins'; cbrunson@bbcinternational.com; kswinney@bbcinternational.com; jgilkey@bbcinternational.com
Subject: Initial C-141 for Culebra Bluff SWD Water Transfer Line
Attachments: Initial C-141, signed and sent 4-3-13.pdf

Attached is the initial C-141 for the Culebra Bluff SWD Water Transfer Line leak on 03/25/2013 in Eddy County, NM. Receipt notification via email is greatly appreciated. If you have any questions, please contact me.

Kathy Purvis
BBC International, Inc.
1324 W. Marland
Hobbs, NM 88240
Phone: (575) 397-6388
Fax: (575) 397-0397
Email: kathy@bbcinternational.com



Google earth

miles 1
km 2



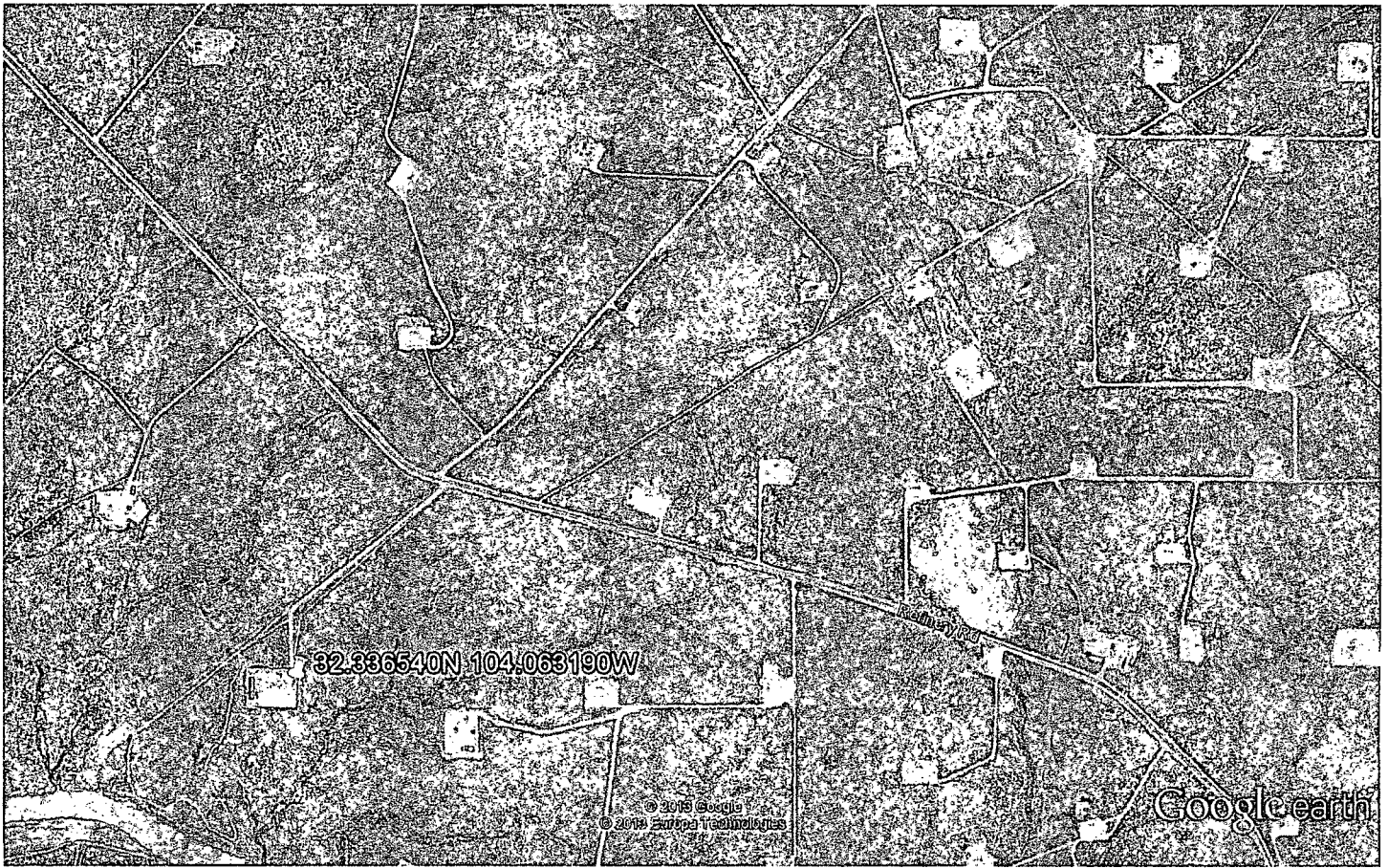
RKF Pinnacle St #1

L-36-22s-28E

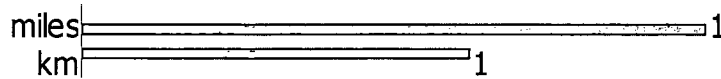
Lat/long given on Chevron C-141

Culebra Bluff SWD Water Transfer Line

DOR 3/25/13



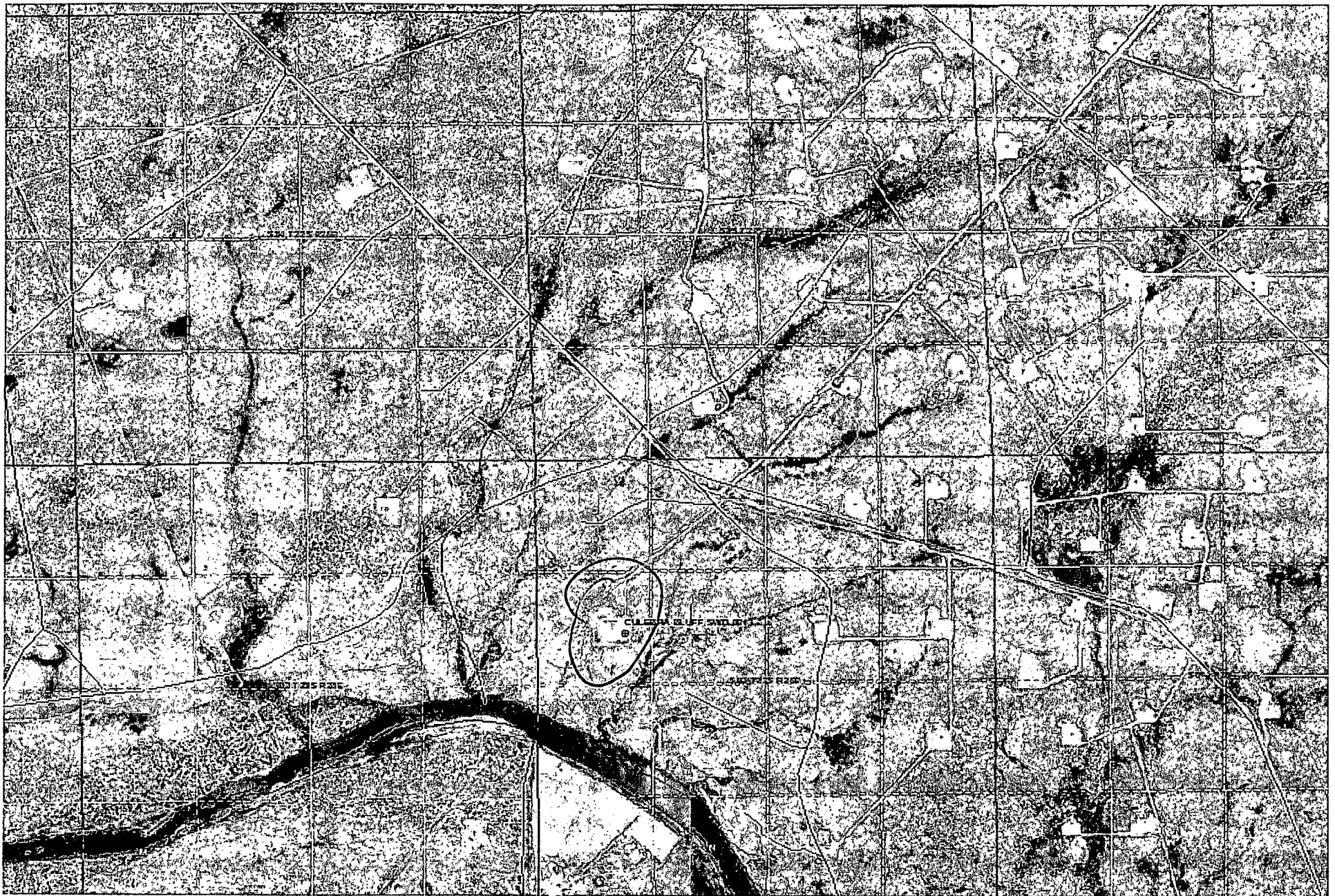
Google earth



Chevron Culebra Bluff SWD #1

E-2-23s-28E

Chevron Culebra Bluff SWD E-2-23s-28e 015-22754



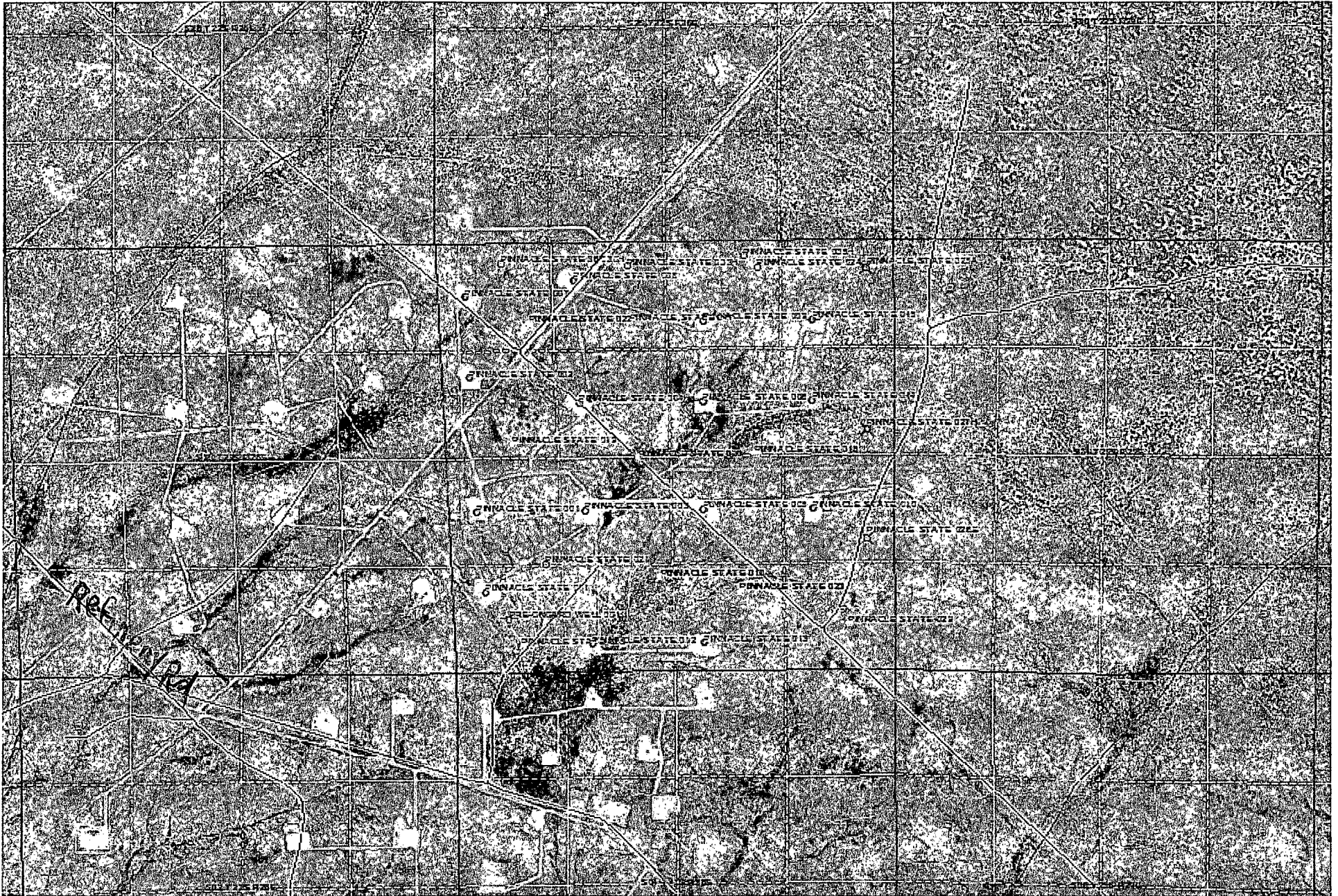
Oil Conservation Division

MapNotes

DrawnBy

4/5/2013 3:39:33 PM

Looking for Chevron Culebra Bluff SWD water xfer line release



Oil Conservation Division

This STR has only RKI wells. Release reported from xfer line in this STR - Lat/long given is on the RKI Pinnacle St #1 well pad.

DrawnBy

4/5/2013 3:16:36 PM

L- 36-225-28E

Well Selection Criteria Quick Print

Field_No = 310595

API Well #	Well Name and No.	Operator Name	Typ	Stat	County	Surf	UL	Sec	Twp	Rng	Ft N/S	Ft E/W	UICPrmt	Lst Insp Dt
30-015-22754-00-00	CULEBRA BLUFF SWD	001	CHEVRON U S A INC	S	A	Eddy	S	E	2	23 S	28 E	1980 N	860 W	10/29/2012
30-015-22754-00-00	CULEBRA BLUFF SWD	001	CHEVRON U S A INC	S	A	Eddy	S	E	2	23 S	28 E	1980 N	860 W	10/29/2012

32. 336540

104. 063190

RE: Culebra Bluff SWD Water Transfer Line

Blevins, Bradley G [Bradley.Blevins@chevron.com]

Sent: Monday, April 08, 2013 8:15 AM

To: Warren, JeanMarie, EMNRD

Cc: Bratcher, Mike, EMNRD

Jean Marie

The release occurred on the water transfer line that goes to the Culebra Bluff SWD, the API for the Culebra Bluff is 3001522754. If you need further info please let me know.

Thanks,
Chevron



Bradley Blevins
Chevron Delaware Basin
HE Specialist
Hobbs FMT
Direct 575-391-1462 86424
Cell- 575-441-0341

From: Warren, JeanMarie, EMNRD [mailto:JeanMarie.Warren@state.nm.us]

Sent: Monday, April 08, 2013 7:58 AM

To: Blevins, Bradley G

Cc: Bratcher, Mike, EMNRD

Subject: Culebra Bluff SWD Water Transfer Line

Good Morning.

Looking into a release you had submitted last week, we cannot find a well with those S/T/R on file and there is no API listed on the documentation.

Every Well with those Section/Township and/Range are not owned by Chevron, nor do they have the name of Culebra Bluff SWD Water Transfer Line.

Please contact me to let me know what the API is for this release, as I cannot enter any information on this release. Thank you very much, I'll be waiting to hear from you. We appreciate your help.

Have a great week!

*Jean-Marie Warren
Business Operations Specialist
NM-OCD District II, Artesia
(575) 748-1283, ext. 101*