

ABOVE THIS LINE FOR DIVISION USE ONLY

## NEW MEXICO OIL CONSERVATION DIVISION

- Engineering Bureau -

1220 South St. Francis Drive, Santa Fe, NM 87505



IVED OGD

### ADMINISTRATIVE APPLICATION CHECKLIST

THIS CHECKLIST IS MANDATORY FOR ALL ADMINISTRATIVE APPLICATIONS FOR EXCEPTIONS TO DIVISION RULES AND REGULATIONS WHICH REQUIRE PROCESSING AT THE DIVISION LEVEL IN SANTA FE

#### Application Acronyms:

[NSL-Non-Standard Location] [NSP-Non-Standard Proration Unit] [SD-Simultaneous Dedication]  
 [DHC-Downhole Commingling] [CTB-Lease Commingling] [PLC-Pool/Lease Commingling]  
 [PC-Pool Commingling] [OLS - Off-Lease Storage] [OLM-Off-Lease Measurement]  
 [WFX-Waterflood Expansion] [PMX-Pressure Maintenance Expansion]  
 [SWD-Salt Water Disposal] [IPI-Injection Pressure Increase]  
 [EOR-Qualified Enhanced Oil Recovery Certification] [PPR-Positive Production Response]

#### [1] TYPE OF APPLICATION - Check Those Which Apply for [A]

- [A] Location - Spacing Unit - Simultaneous Dedication  
☒ NSL ☐ NSP ☐ SD

Check One Only for [B] or [C]

- [B] Commingling - Storage - Measurement  
☐ DHC ☐ CTB ☐ PLC ☐ PC ☐ OLS ☐ OLM

- [C] Injection - Disposal - Pressure Increase - Enhanced Oil Recovery  
☐ WFX ☐ PMX ☐ SWD ☐ IPI ☐ EOR ☐ PPR

- [D] Other: Specify \_\_\_\_\_

- NSC 7179  
 - Apache Corporation  
 873

WCH  
 - Warm State #2  
 30-025-92056  
 Pool  
 - Vacuum AB 61780  
 62340  
 - Vacuum; Upper Penn  
 62320

#### [2] NOTIFICATION REQUIRED TO: - Check Those Which Apply, or ☐ Does Not Apply

- [A] ☐ Working, Royalty or Overriding Royalty Interest Owners  
 [B] ☒ Offset Operators, Leaseholders or Surface Owner  
 [C] ☐ Application is One Which Requires Published Legal Notice  
 [D] ☐ Notification and/or Concurrent Approval by BLM or SLO  
U.S. Bureau of Land Management - Commissioner of Public Lands, State Land Office  
 [E] ☒ For all of the above, Proof of Notification or Publication is Attached, and/or,  
 [F] ☐ Waivers are Attached

#### [3] SUBMIT ACCURATE AND COMPLETE INFORMATION REQUIRED TO PROCESS THE TYPE OF APPLICATION INDICATED ABOVE.

[4] **CERTIFICATION:** I hereby certify that the information submitted with this application for administrative approval is **accurate** and **complete** to the best of my knowledge. I also understand that **no action** will be taken on this application until the required information and notifications are submitted to the Division.

Note: Statement must be completed by an individual with managerial and/or supervisory capacity.

David Catanach  
 Print or Type Name

David Catanach  
 Signature

Agent for Apache Corporation  
 Title

10/2/14  
 Date

drcatanach@netscape.com  
 E-Mail Address

October 2, 2014

**Hand Delivered**

New Mexico Oil Conservation Division  
1220 S. St. Francis Drive  
Santa Fe, New Mexico 87505

Attention: Ms. Jami Bailey  
Division Director

Re: Application for Unorthodox Well Location  
Warn State AC 2 Well No. 29  
API No. (30-025-42056)  
Surface Location: 2600' FSL & 1900' FWL (Unit K)  
Bottomhole Location: 2310' FNL & 2310' FWL (Unit F)  
Both in Section 6, T-18 South, R-35 East, NMPM,  
Lea County, New Mexico

Dear Ms. Bailey:

Pursuant to Division Rule 19.15.15.13, Apache Corporation ("Apache") respectfully requests administrative approval of an unorthodox oil well location for its proposed Warn State AC 2 No. 29. This well will be drilled as a development oil well in the Vacuum-Abo Reef (61780), Vacuum-Wolfcamp (62340) and Vacuum Upper-Penn (62320) Pools.

**In the Vacuum-Wolfcamp and Vacuum Upper-Penn Pools**, the Warn State AC 2 No. 29 will be dedicated to a standard 77.51-acre oil spacing and proration unit comprising the S/2 NW/4 of Section 6. **In the Vacuum-Abo Reef Pool**, the Warn State AC 2 No. 29 will be dedicated to a standard 40-acre oil spacing and proration unit comprising the SE/4 NW/4 of Section 6. This 40-acre spacing unit will also be dedicated in the Vacuum-Abo Reef Pool to Apache's proposed Warn State AC 2 No. 30 (API No. 30-025-42075) located at a standard well location 1675 feet from the North line and 1965 feet from the West line.

The Vacuum-Wolfcamp and Vacuum Upper-Penn Pools are currently governed by the "Special Rules and Regulations for the Vacuum-Wolfcamp Oil Pool" and the "Special Rules and Regulations for the Vacuum Upper-Pennsylvanian Pool" as established by Division Orders No. R-2422 and R-2697, respectively. These rules require standard 80-acre spacing and proration units. These rules also require that the initial well on a standard 80-acre spacing unit be located within 200 feet of the center of either the NW/4 or SE/4 of a governmental quarter section.

The Vacuum-Abo Reef Pool is currently governed by Division Rule 19.19.15.9 which requires standard 40-acre spacing and proration units with wells to be located no closer than 330 feet to the outer boundary of the spacing unit.

With respect to the Vacuum-Wolfcamp and Vacuum Upper-Penn Pools, the subject well is unorthodox because neither the perforated intervals in each zone, or the bottomhole location will be located within 200 feet of the center of the SE/4 NW/4 of Section 6 (See attached plat).

With respect to the Vacuum-Abo Reef Pool, the subject well is unorthodox because the perforated interval in the well will likely be located closer than 330 feet to the southern boundary of the spacing unit. **(Please note that Lot No. 2 in Section 6 is comprised of 37.51 acres. Consequently, the dimensions of this lot are approximately 1,313 feet high and 1,244 feet wide.)**

The proposed unorthodox well locations and directional drilling are necessary in order to avoid surface obstructions within the SE/4 NW/4 of Section 6.

The affected offset tracts are:

1) **the N/2 SW/4 and SE/4 SW/4 of Section 6.** There is currently no Wolfcamp or Upper-Penn development on this tract. The SE/4 SW/4 is currently developed in the Abo Reef and is operated by Apache. This tract is either operated or leased by Apache Corporation, and the working interest ownership between this tract and the drill tract is common; and

2) **the W/2 NE/4, SE/4 NE/4, N/2 SE/4 and SW/4 SE/4 of Section 6.** There is currently no Wolfcamp, Upper-Penn or Abo development on this tract. The leasehold owner of this tract is Chevron U.S.A., Inc.

Notice of this application is being provided to Chevron U.S.A., Inc. in accordance with Division rules.

Attached is a Form C-102 for the Warn State AC 2 No. 29 showing the dedicated acreage in the Vacuum-Abo Reef, Vacuum-Wolfcamp and Vacuum Upper Penn Pools. Also attached is a map showing the surface and bottomhole well locations, proposed spacing units, and affected offset acreage.

In summary, approval of the application will provide Apache Corporation the opportunity to recover additional oil and gas reserves from the Vacuum-Abo Reef underlying the SE/4 NW/4 of Section 6, and from the Vacuum-Wolfcamp and Vacuum Upper Penn Pools underlying the S/2 NW/4 of Section 6 that may otherwise not be

recovered by the existing or proposed wells, thereby preventing waste, and will not violate correlative rights.

If you should have any questions, please call me at (505) 690-9453.

Sincerely,

A handwritten signature in black ink, appearing to read "David Catanach". The signature is fluid and cursive, with a long horizontal stroke at the end.

David Catanach, Agent  
Apache Corporation  
303 Veterans Airpark Lane  
Suite 3000  
Midland, Texas 79705

Xc: OCD-Hobbs

**DISTRICT I**  
1823 N. French Dr., Hobbs, NM 88240  
Phone: (575) 393-6161 Fax: (575) 393-6720

**DISTRICT II**  
811 E. First St., Artesia, NM 88210  
Phone: (575) 748-1283 Fax: (575) 748-9720

**DISTRICT III**  
1000 Rio Brazos Road, Aztec, NM 87410  
Phone: (505) 334-6178 Fax: (505) 334-6170

**DISTRICT IV**  
1220 S. St. Francis Dr., Santa Fe, NM 87505  
Phone: (505) 476-3480 Fax: (505) 476-3462

State of New Mexico  
Energy, Minerals & Natural Resources Department  
**OIL CONSERVATION DIVISION**  
1220 South St. Francis Dr.  
Santa Fe, New Mexico 87505

Form C-102  
Revised August 1, 2011  
Submit one copy to appropriate  
District Office

AMENDED REPORT

**WELL LOCATION AND ACREAGE DEDICATION PLAT**

API Number <b>30-025-42056</b>	Pool Code <b>617.80</b>	Pool Name <b>Vacuumj ABO Reef</b>
Property Code <b>306627</b>	Property Name <b>WARN STATE AC 2</b>	Well Number <b>29</b>
OGRIID No. <b>873</b>	Operator Name <b>APACHE CORPORATION</b>	Elevation <b>3981'</b>

Surface Location

UL or lot No.	Section	Township	Range	Lot Idn	Feet from the	North/South line	Feet from the	East/West line	County
K	6	18-S	35-E		2600	SOUTH	1900	WEST	LEA

Bottom Hole Location If Different From Surface

UL or lot No.	Section	Township	Range	Lot Idn	Feet from the	North/South line	Feet from the	East/West line	County
F	6	18-S	35-E		2310	NORTH	2310	WEST	LEA

Dedicated Acres <b>40</b>	Joint or Infill	Consolidation Code	Order No.
------------------------------	-----------------	--------------------	-----------

NO ALLOWABLE WILL BE ASSIGNED TO THIS COMPLETION UNTIL ALL INTERESTS HAVE BEEN CONSOLIDATED OR A NON-STANDARD UNIT HAS BEEN APPROVED BY THE DIVISION.

		<p><b>CORNER COORDINATES TABLE</b></p> <p>A - Y= 648657.9 N, X= 755864.7 E          B - Y= 648660.0 N, X= 757185.2 E          C - Y= 647334.5 N, X= 757199.6 E          D - Y= 647333.4 N, X= 755878.3 E          E - Y= 646012.5 N, X= 757214.0 E          F - Y= 646010.6 N, X= 755891.9 E</p> <p><b>BOTTOM HOLE LOCATION</b>          Y= 647675.5 N          X= 756941.4 E</p> <p><b>GEODETC COORDINATES</b>          NAD 27 NME</p> <p><b>SURFACE LOCATION</b>          Y= 647288.7N          X= 756535.0E</p> <p><b>LAT.=32.776707° N</b>  <b>LONG.=103.498687° W</b></p> <p><b>LAT.=32°46'36" N</b>  <b>LONG.=103°29'55" W</b></p>
<p><b>OPERATOR CERTIFICATION</b></p> <p>I hereby certify that the information herein is true and complete to the best of my knowledge and belief, and that this organization either owns a working interest or undivided mineral interest in the land including the proposed bottom hole location or has a right to drill this well at this location pursuant to a contract with its owner of such mineral or working interest, or to a voluntary pooling agreement or a compulsory pooling order heretofore entered by the division.</p> <p><i>Michelle Cooper</i> 8-21-14          Signature Date</p> <p><i>Michelle Cooper</i>          Printed Name</p> <p><i>Michelle.cooper@apachecorp.com</i>          E-mail Address</p>		<p><b>SURVEYOR CERTIFICATION</b></p> <p>I hereby certify that the well location shown on this plat was plotted from field notes of actual surveys made by me or under my supervision, and that the same is true and correct to the best of my belief.</p> <p><b>JUNE 24, 2014</b></p> <p>Date of Survey</p> <p>Signature &amp; Seal of Professional Surveyor:</p> <p><i>Ronald J. Eidson</i>          Ronald J. Eidson          3239          Certificate Number 12641          Board of Professional Surveyors          L.S.L. PROFESSIONAL SURVEYORS          TWS W.O.: 14.11.0666</p>

DISTRICT I  
1625 N. French Dr., Hobbs, NM 88240  
Phone: (575) 393-6161 Fax: (575) 393-0720

DISTRICT II  
811 S. First St., Artesia, NM 88210  
Phone: (575) 748-1283 Fax: (575) 748-9720

DISTRICT III  
1000 Rio Brazos Road, Aztec, NM 87410  
Phone: (505) 334-6178 Fax: (505) 334-6170

DISTRICT IV  
1220 S. St. Francis Dr., Santa Fe, NM 87505  
Phone: (505) 476-3460 Fax: (505) 476-3462

State of New Mexico  
Energy, Minerals & Natural Resources Department  
OIL CONSERVATION DIVISION  
1220 South St. Francis Dr.  
Santa Fe, New Mexico 87505

HOBBS OGD Form C-102  
Revised August 1, 2011  
Submit one copy to appropriate  
District Office

AUG 21 2014

DIAMENDED REPORT

RECEIVED

WELL LOCATION AND ACREAGE DEDICATION PLAT

API Number 30-025-42056	Pool Code 62340	Pool Name Vacuum; Wolfcamp
Property Code 306627	Property Name WARN STATE AC 2	Well Number 29
GORID No. 873	Operator Name APACHE CORPORATION	Elevation 3981'

Surface Location									
UL or lot No.	Section	Township	Range	Lot Idn	Feet from the	North/South line	Feet from the	East/West line	County
K	6	18-S	35-E		2600	SOUTH	1900	WEST	LEA

Bottom Hole Location If Different From Surface									
UL or lot No.	Section	Township	Range	Lot Idn	Feet from the	North/South line	Feet from the	East/West line	County
F	6	18-S	35-E		2310	NORTH	2310	WEST	LEA

Dedicated Acres: 80	Joint or Infill	Consolidation Code	Order No.
------------------------	-----------------	--------------------	-----------

NO ALLOWABLE WILL BE ASSIGNED TO THIS COMPLETION UNTIL ALL INTERESTS HAVE BEEN CONSOLIDATED OR A NON-STANDARD UNIT HAS BEEN APPROVED BY THE DIVISION

		<p><b>OPERATOR CERTIFICATION</b></p> <p>I hereby certify that the information herein is true and complete to the best of my knowledge and belief, and that this organization either owns a working interest or unless mineral interest in the land including the proposed bottom hole location or has a right to drill this well at this location pursuant to a contract with an owner of such mineral or working interest, or to a voluntary pooling agreement or a compulsory pooling order heretofore entered by the division.</p> <p>Signature: <i>Michelle Cooper</i> Date: 8-21-14</p> <p>Printed Name: Michelle Cooper</p> <p>E-mail Address: michelle.cooper@apachecorp.com</p>
<p><b>CORNER COORDINATES TABLE</b></p> <p>A - Y= 648657.9 N, X= 755864.7 E B - Y= 648660.0 N, X= 757185.2 E C - Y= 647334.5 N, X= 757199.6 E D - Y= 647333.4 N, X= 755878.3 E E - Y= 646012.5 N, X= 757214.0 E F - Y= 646010.6 N, X= 755891.9 E</p> <p><b>BOTTOM HOLE LOCATION</b> Y= 647675.5 N X= 756941.4 E</p> <p><b>GEODETC COORDINATES</b> NAD 27 NME</p> <p><b>SURFACE LOCATION</b> Y= 647288.7N X= 756535.0E</p> <p>LAT.=32.776707° N LONG.=103.498687° W</p> <p>LAT.=32°46'36" N LONG.=103°29'55" W</p>		<p><b>SURVEYOR CERTIFICATION</b></p> <p>I hereby certify that the well location shown on this plat was plotted from field notes of actual surveys made by me or under my supervision, and that the same is true and correct to the best of my belief.</p> <p>JUNE 24, 2014</p> <p>Date of Survey</p> <p>Signature &amp; Seal of Professional Surveyor:</p> <p><i>Ronald J. Eidson</i></p> <p>3239</p> <p>3239</p> <p>12641</p> <p>3239</p> <p>WSWC W.D.: 14.11.0666</p>

AUG 22 2014

DISTRICT I  
1635 N. French Dr., Hobbs, NM 88240  
Phone: (575) 393-6161 Fax: (575) 393-0720

DISTRICT II  
811 S. First St., Artesia, NM 88210  
Phone: (575) 748-1283 Fax: (575) 748-9720

DISTRICT III  
1000 Rio Brazos Road, Aztec, NM 87410  
Phone: (505) 334-6178 Fax: (505) 334-6170

DISTRICT IV  
1220 S. St. Francis Dr., Santa Fe, NM 87505  
Phone: (505) 476-3460 Fax: (505) 476-3462

State of New Mexico  
Energy, Minerals & Natural Resources Department  
OIL CONSERVATION DIVISION  
1220 South St. Francis Dr.  
Santa Fe, New Mexico 87505

Form C-102  
Revised August 1, 2011  
Submit one copy to appropriate  
District Office

AMENDED REPORT

WELL LOCATION AND ACREAGE DEDICATION PLAT

API Number <b>30-05-42056</b>	Pool Code <b>62320</b>	Pool Name <b>Vacuumj Upper Penn</b>
Property Code <b>306627</b>	Property Name <b>WARN STATE AC 2</b>	
OGRIJ No. <b>873</b>	Operator Name <b>APACHE CORPORATION</b>	Well Number <b>29</b>
		Elevation <b>3981'</b>

Surface Location

UL or lot No.	Section	Township	Range	Lot Idn	Feet from the	North/South line	Feet from the	East/West line	County
K	6	18-S	35-E		2600	SOUTH	1900	WEST	LEA

Bottom Hole Location If Different From Surface

UL or lot No.	Section	Township	Range	Lot Idn	Feet from the	North/South line	Feet from the	East/West line	County
F	6	18-S	35-E		2310	NORTH	2310	WEST	LEA

Dedicated Acres <b>80</b>	Joint or Infill	Consolidation Code	Order No.
------------------------------	-----------------	--------------------	-----------

NO ALLOWABLE WILL BE ASSIGNED TO THIS COMPLETION UNTIL ALL INTERESTS HAVE BEEN CONSOLIDATED OR A NON-STANDARD UNIT HAS BEEN APPROVED BY THE DIVISION

	<p><b>CORNER COORDINATES TABLE</b></p> <p>A - Y= 648657.9 N, X= 755864.7 E          B - Y= 648660.0 N, X= 757185.2 E          C - Y= 647334.5 N, X= 757199.6 E          D - Y= 647333.4 N, X= 755878.3 E          E - Y= 646012.5 N, X= 757214.0 E          F - Y= 646010.6 N, X= 755891.9 E</p> <p><b>BOTTOM HOLE LOCATION</b>          Y= 647675.5 N          X= 756941.4 E</p> <p><b>GEODETIC COORDINATES</b>          NAD 27 NME</p> <p><b>SURFACE LOCATION</b>          Y= 647288.7N          X= 756535.0E</p> <p><b>LAT.=32.776707° N</b>  <b>LONG.=103.498687° W</b></p> <p><b>LAT.=32°46'36" N</b>  <b>LONG.=103°29'55" W</b></p>	<p><b>OPERATOR CERTIFICATION</b></p> <p>I hereby certify that the information herein is true and complete to the best of my knowledge and belief, and that this organization either owns a working interest or unleased mineral interest in the land including the proposed bottom hole location or has a right to drill this well at this location pursuant to a contract with an owner of such mineral or working interest, or to a voluntary pooling agreement or a compulsory pooling order heretofore entered by the division.</p> <p><i>Michelle Cooper</i> 8-21-14          Signature Date</p> <p><i>Michelle Cooper</i>          Printed Name</p> <p><i>michelle.cooper@apachecorp.com</i>          E-mail Address</p>
	<p><b>SURVEYOR CERTIFICATION</b></p> <p>I hereby certify that the well location shown on this plat was plotted from field notes of actual surveys made by me or under my supervision, and that the same is true and correct to the best of my belief.</p> <p><b>JUNE 24, 2014.</b></p> <p>Date of Survey</p> <p><i>Ronald J. Eidson</i>          Signature &amp; Seal of Professional Surveyor</p> <p><b>RONALD J. EIDSON</b>          NEW MEXICO          3239</p> <p><i>Ronald J. Eidson</i> 8/10/2014          Certificate Number Ronald J. Eidson 12641          PROFESSIONAL SURVEYOR          L.S.L. JWSC W.O. 14.11.0666</p>	

Spacing Unit: Vacuum Upper-Penn &  
Vacuum-Wolfcamp Pools

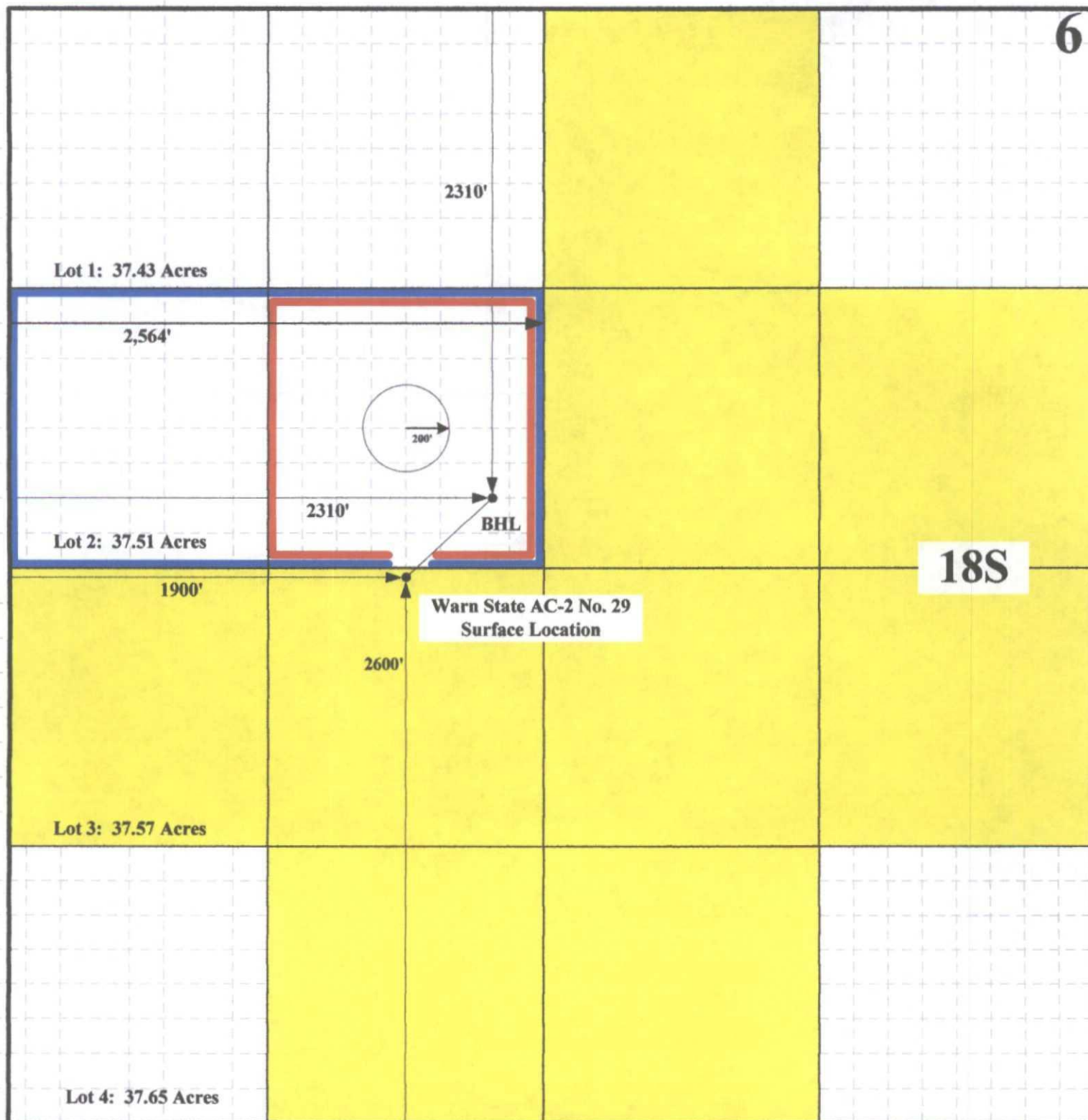
Spacing Unit: Vacuum-Abo Reef Pool

Affected Offset Acreage

Approximate Lot 2 Dimensions:  
1313' High' x 1,244' Wide

35E

6



**Apache Corporation**  
**Application for Unorthodox Well Location**  
**Warn State AC 2 No. 29**

October 2, 2014

**CERTIFIED MAIL**  
**RETURN RECEIPT REQUESTED**

TO: Chevron U.S.A., Inc.  
1400 Smith Street  
Houston, Texas 77002

Re: Apache Corporation  
Unorthodox Oil Well Location  
Warn State AC 2 No. 29  
Surface Location: 2600' FSL & 1900' FWL (Unit K)  
Bottomhole Location: 2310' FNL & 2310' FWL (Unit F)  
Both in Section 6, T-18 South, R-35 East, NMPM,  
Lea County, New Mexico

Ladies and Gentlemen:

Enclosed please find a copy of the application filed by Apache Corporation ("Apache") for authorization to drill it's Warn State AC 2 No. 29 at an unorthodox oil well location in the Vacuum-Abo Reef, Vacuum-Wolfcamp and Vacuum Upper-Penn Pools as described above. In the Vacuum-Abo Reef Pool, the well will be dedicated to a standard 40-acre spacing and proration unit comprising the SE/4 NW/4 of Section 6. In the Vacuum-Wolfcamp and Vacuum Upper-Penn Pools, the well will be dedicated to a standard 77.51-acre spacing and proration unit comprising the S/2 NW/4 of Section 6. The unorthodox location and directional drilling are necessary in order to avoid surface obstructions within the SE/4 NW/4 of Section 6.

As the owner of an interest that may be affected by the proposed unorthodox oil well location, you are being provided notice as per Division rules and regulations. Objections must be filed in writing at the Division's Santa Fe office within 20 days from the date this notice was sent to you. If no objection is received within twenty days after the filing of this application and proof of notice with the Division, the application may be approved.

If you should have any questions, please call me at (505) 690-9453.

Sincerely,



David Catanach  
Agent-Apache Corporation  
303 Veterans Airpark Lane  
Suite 3000  
Midland, Texas 79705

Enclosure

7013 2630 0000 9072 0613

U.S. Postal Service™	
<b>CERTIFIED MAIL™ RECEIPT</b>	
(Domestic Mail Only; No Insurance Coverage Provided)	
For delivery information visit our website at <a href="http://www.usps.com">www.usps.com</a>	
HOUSTON TX 77002	
<b>OFFICIAL USE</b>	
Postage	\$ 1.40
Certified Fee	\$3.30
Return Receipt Fee (Endorsement Required)	\$2.70
Restricted Delivery Fee (Endorsement Required)	\$0.00
Total	\$7.40

Sent

Street or PO

City

PS Form 3800, April 2012

**Chevron U.S.A., Inc.**

**1400 Smith Street**

**Houston, Texas 77002**

Postmark

OCT 2 2014

USPS SAN ANTONIO, TX 78201

POST OFFICE

Instructions

## McMillan, Michael, EMNRD

---

**From:** David Catanach <drcatanach@netscape.com>  
**Sent:** Monday, October 13, 2014 7:26 AM  
**To:** McMillan, Michael, EMNRD  
**Subject:** Re: Apache Warn State AC #2 29

Michael,

Although I have not seen the well plan, I can say with certainty that all perforations within the Warn State AC 2 No. 29 will be located within the SE/4 NW/4 of Section 6.

If you need anything else, please let me know.

David

--- [Michael.McMillan@state.nm.us](mailto:Michael.McMillan@state.nm.us) wrote:

From: "McMillan, Michael, EMNRD" <[Michael.McMillan@state.nm.us](mailto:Michael.McMillan@state.nm.us)>  
To: "Catanach, David" <[drcatanach@netscape.com](mailto:drcatanach@netscape.com)>  
Subject: Apache Warn State AC #2 29  
Date: Wed, 8 Oct 2014 20:27:30 +0000

David:

I want to make sure that I am clear that the Apache Warn State AC #2 29 all of the perforations are in the SE/4 NW/4 of section 6 T 18S35E?

Thanks  
Mike

---

Netscape. Just the Net You Need.